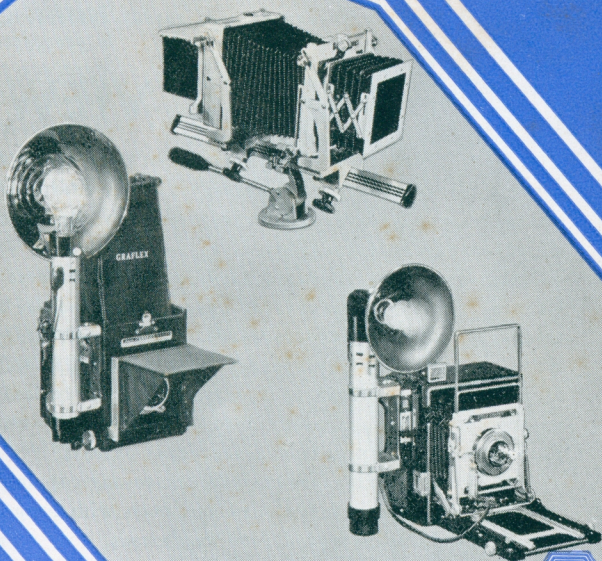


FOR PRIZE-WINNING PICTURES

GRAPHIC - GRAFLEX

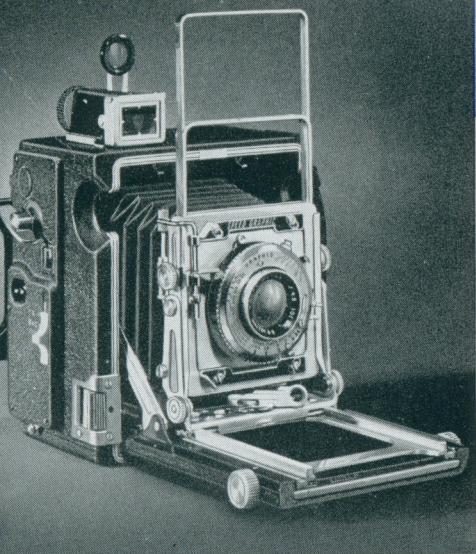
Equipment



PHOTOGRAPHIC EQUIPMENT SINCE 1890



Pacemaker GRAPHICS



For fast action, prize-winning salon shots—any picture, there is one camera that will meet all requirements—a Pacemaker Graphic. News Photographers, advanced amateurs and artist-photographers depend on the perfection and rapid-fire versatility of Pacemaker Graphic cameras.

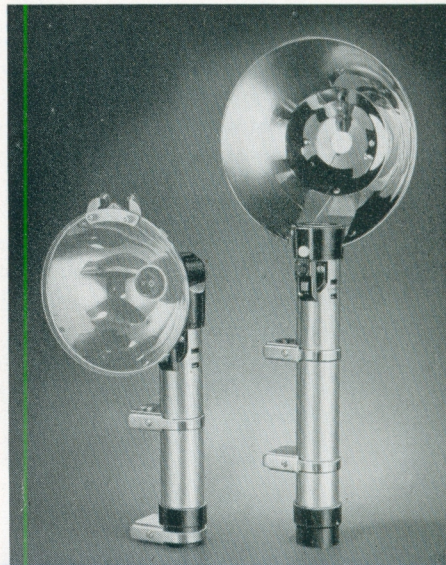
The many features of the Pacemaker Speed Graphics equip these famous cameras for a wide range of usefulness. Most outstanding of these features are: new accurate governor controlled focal plane shutter, tilting front, double extension bellows, parallax correcting view finders; body release for tripping either front or back shutter, built-in focal-plane synchronization, interchangeable lens board, and folding infinity stops.

Pacemaker Graphics available in Speed Graphic or Crown Graphic models; your choice of three sizes: $2\frac{1}{4} \times 3\frac{1}{4}$, $3\frac{1}{4} \times 4\frac{1}{4}$ or 4×5 . The Crown Graphic is a Speed Graphic without a focal-plane shutter. All models now with Grafluk Back to accept Graphic Film Holders, Film Pack Adapters, and Roll Film Holders.

The New GRAFLITE

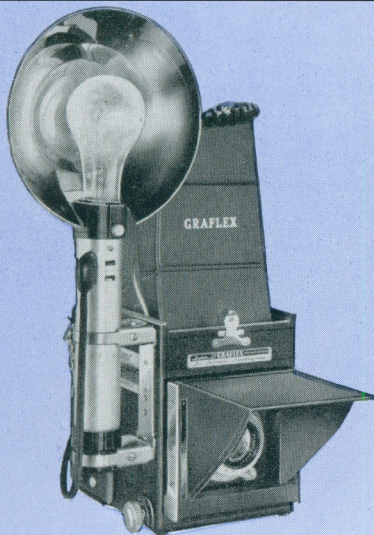
Graflite was created to meet the demand for equipment geared to the recent advances in flash photography. Its versatility, simplicity of operation, light weight and modern styling make it the unit desired by amateur and professional alike.

Graflite means greater speed, efficiency, and ease in getting flash pictures under a wide range of conditions, including fast shutter speed synchronized multi-flash for color photography. Graflite allows the photographer to use any of the many forms of synchronization, depending on the type of shutter and accessory equipment being used. Easy-to-use controls, outlets, and refinements permit the use of additional power, extension circuits and auxiliary equipment. Both 5" and 7" reflectors have an ejector which "pops" the used lamp out—speeding up the loading-firing-ejecting cycle. A sharp-pointed, spring loaded post assures positive contact regardless of the condition of solder on the lamp base. A heavy duty battery-case clamp permits the Graflite to be quickly and securely snapped onto the camera. A recessed button permits release for instant removal.



PRIZE-WINNING CAMERAS FOR PRIZE-WINNING PICTURES

SUPER D GRAFLEX

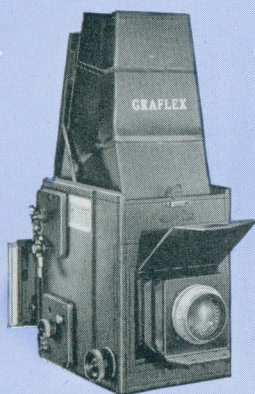


Designed to highest professional standards, the Super D Graflex is an unusually fine all-purpose camera of exceptional utility. Ideally suited to fine portraiture, pictures of children, pets and scenic work where composition and other pictorial factors are of first importance, the Super D Graflex is top choice with outstanding portrait and scenic photographers.

Industrial and commercial photographers, as well as scientists and explorers, have demonstrated the capabilities of the Super D to produce pictures of unsurpassed excellence under the most difficult conditions.

With its full-vision ground glass focusing, you see your picture right up to the instant you take it. Both subject and photographer have full freedom of movement. The Graflex automatic diaphragm lets you focus with the lens wide open, but automatically returns to a pre-set aperture as the shutter is released. The Kodak Ektalite Field Lens makes the image clear and bright all over the ground glass. Built-in flash synchronization, a fine Ektar coated lens, revolving back, the ability to use sheet film, film packs and plates, ease in operation and adaptability to special uses, make the Super D the camera for those who want the finest.

R. B. SERIES B GRAFLEX



The R. B. Series B Graflex is an all-round precision-built camera of established dependability. It has proved itself in the hands of amateurs and professionals everywhere. Now fitted with Kodak Ektalite Field Lens for greater ease in focusing, the popular price of the Series B, plus its ability to get great pictures on economical $2\frac{1}{4} \times 3\frac{1}{4}$ film make it an admirable camera choice.

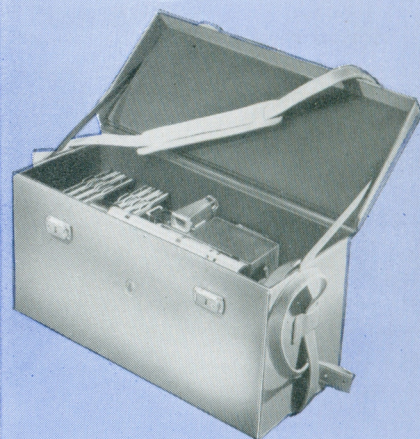
Fitted with a fine Kodak Ektar $f/4.5$ lens with anti-reflection surface coating, the Series B Graflex lens mount will also accept the 10" accessory telephoto lens. All $2\frac{1}{4} \times 3\frac{1}{4}$ Graflex film and plate accessories may be used interchangeably including film pack adapters, film holders, 120 roll film holders and film magazines. The revolving back permits vertical or horizontal compositions with equal facility.

CUSTOMCASE

Outstandingly good-looking the Customcase for the Graphic camera is strong, beautifully designed—the last word in carrying case convenience. The finest tan sole leather has been used in its construction. Thorough reinforcing, sturdy stitching and heavy brass hardware complete its durability and smart appearance.

Interior of the Customcase is lined with maroon velvet and is readily adapted to the requirements of your particular equipment. Ample room is provided for accessories as well as your Graphic camera. The $3\frac{1}{4} \times 4\frac{1}{4}$ and 4×5 Graphic cameras are accepted by the larger case. The smaller Customcase is designed especially for $2\frac{1}{4} \times 3\frac{1}{4}$ Graphics. A movable partition in the camera compartment adjusts to the type camera to be accommodated. The Graflex Customcase accepts the new Grafite as well as earlier Graflex flash equipment. An adjustable strap encircling the case is provided with a generous shoulder pad for ease in carrying.

Heavy-duty Vulcanoid cases for Graphic cameras are also available.

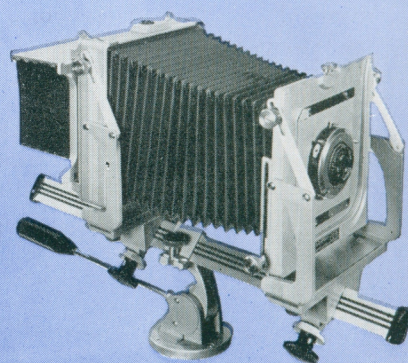


GRAPHIC VIEW II

The 4×5 Graphic View II is a camera of limitless photographic facility—great for portrait, architectural, still-life, color and other types of photography requiring a precise camera of great versatility, ease of adjustment and great rigidity.

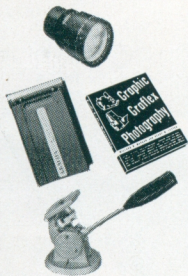
Many ingenious features contribute to the extreme flexibility of the Graphic View. The camera is of light weight all-metal construction with tarnish and scratch-resistant finish. Generous tilts and swings complete with intermediate detent settings for parallelism, as well as lateral shifts, all identical on front and back, together with 3" rack and pinion vertical movement of the lens combine to provide all adjustments necessary to the control of perspective and sharpness of field.

A 16" bellows extension permits one-to-one copying with lenses with normal focal length, large close-ups even with long-focus lenses, and direct magnification with short-focus lenses.



ACCESSORIES

Graflex and Graphic accessories broaden the range of your photographic activity. Be prepared for any assignment or picture taking opportunity. Complete your equipment with these essential Graphic Graflex accessories.



FOR YOUR CAMERA

- 👍 Film pack adapters—for use when quick reloading counts.
- 👍 Sheet film magazines—hold six and twelve sheets of film in individual septums for exposure and development at will.
- 👍 Roll Film Holders—for any film on 120 size spool. Models for $2\frac{1}{4} \times 2\frac{1}{4}$ and $2\frac{1}{4} \times 3\frac{1}{4}$ picture sizes. For Graflex Backs and for Graflok Backs.
- 👍 “Graphic-Graflex Photography” the most complete book on the use of the larger camera, ever published! This remarkable book completely describes all Graflex-made equipment and its operation.
- 👍 Accessory lenses—wide angle for interior work where space is limited—telephoto lenses for large images, distant pictures and fine portraits.
- 👍 Pan-tilt Tripod Head—for convenience and flexibility of operation in work requiring use of a tripod.
- 👍 Sheet film holders—be sure you own enough of these important adjuncts to your photographic equipment.

GRAFLEX, Inc., ROCHESTER 8, N. Y.