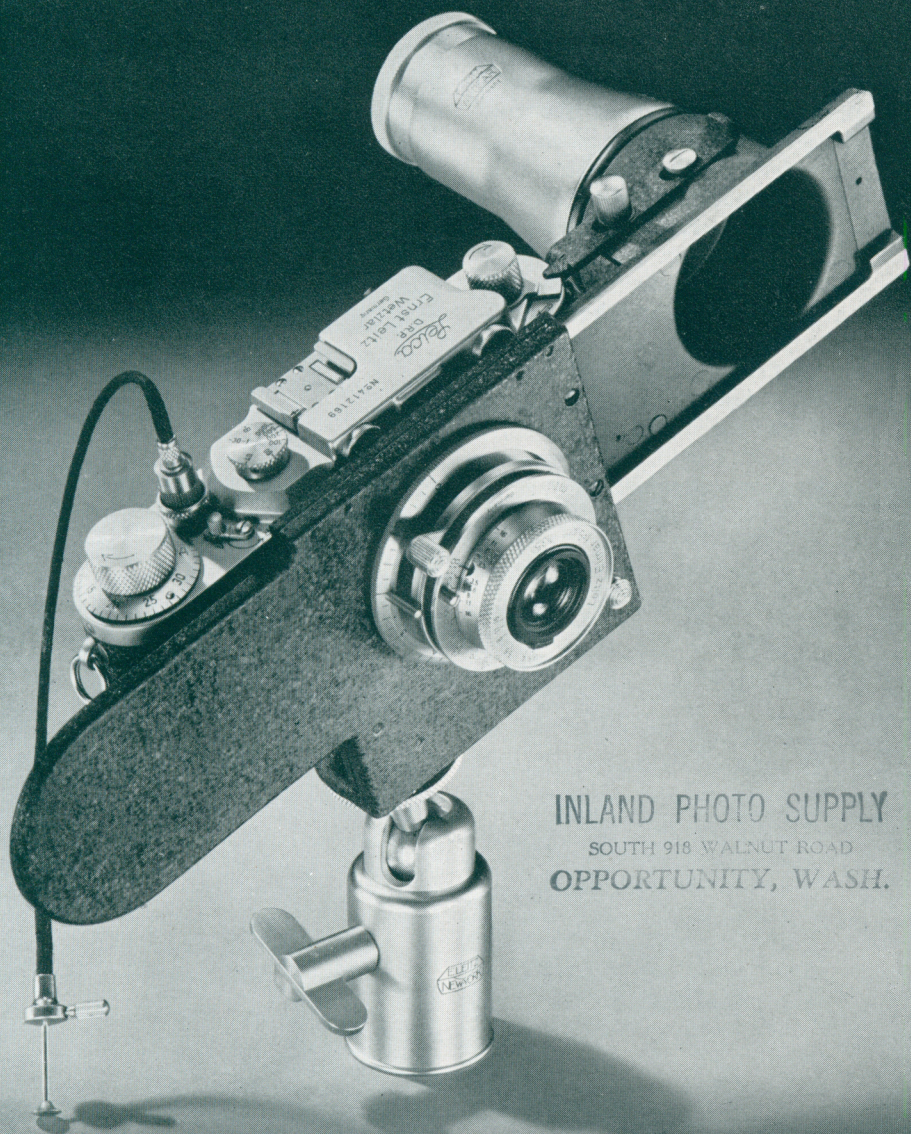


Leica* **FOCASLIDE**

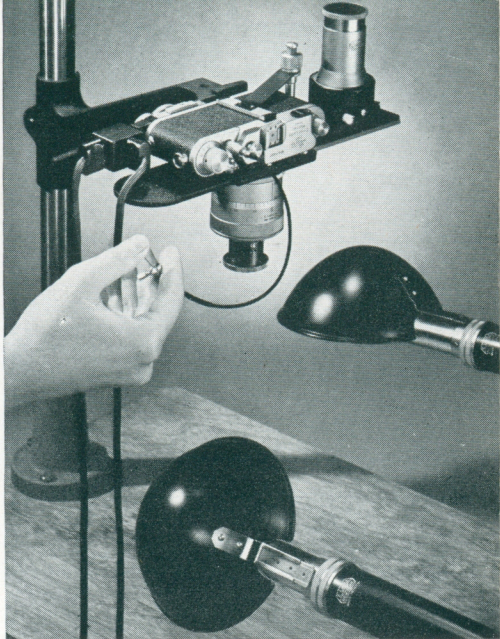


INLAND PHOTO SUPPLY
SOUTH 918 WALNUT ROAD
OPPORTUNITY, WASH.

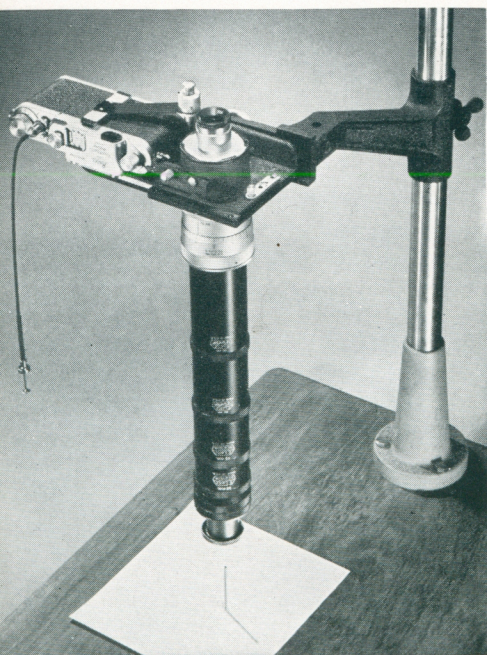
The Versatile Focaslide:

The Focaslide consists of two parts, the Slider and the Base. The lens is unscrewed from the Leica Camera and attached to the Base, while the camera is quickly secured to the Slider through a clamping arrangement. Accurate composing and focusing is done on the ground glass; then, the slider is pushed over to place the camera in photographing position, and the picture is made. Operation is quick and simple.

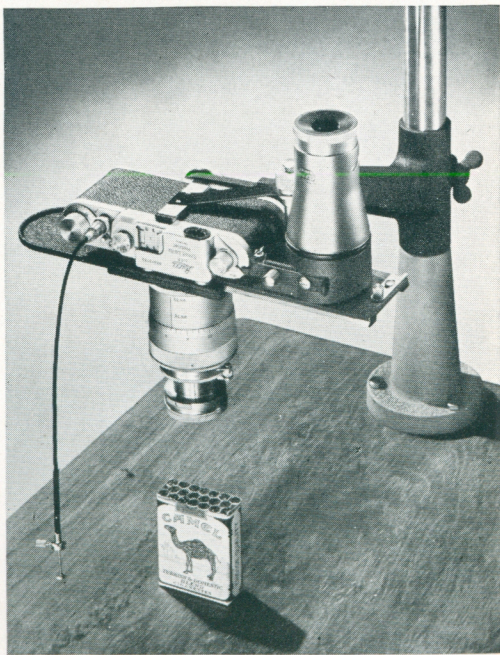
The Focaslide can be used on a tripod or it can be attached to the upright and base-board of a Leitz Enlarger with a Sliding Arm.



Fitted With Villa Flash Unit



With Complete Set of Extension Tubes



With Adjustable Micrometer Extension Tube

CLOSE-UP PHOTOGRAPHY *Leica** WITH YOUR CAMERA

You can make all types of close-up pictures with your Leica Camera and the Focaslide . . . from a cluster of flowers down to the head of a pin, to reveal detail which normally cannot be seen. Copying, nature photography, medical photography and a host of other picture-making opportunities are opened to you. Ground glass focusing is provided and the Copying Attachment can be used with all Leica lenses.

How It Works: The principle behind the Focaslide is simple: it enables the lens to be extended out from the camera, closer to the subject. This magnifies the image on the negative. The further the lens is extended from the camera, the greater is the image magnification.

The Extension Tubes: The Focaslide extends the lens 11.8mm. from the film in the camera. To permit greater separation of lens from camera, a number of Extension Tubes are available in the following lengths: 7mm., 15mm., 30mm., 45mm., 60mm. and 90mm. The Tubes can be used singly, or together in tandem arrangement, to provide a series of extensions. Thus, with the use of two 90mm. and one 60mm. Extension Tubes, a subject only $3/16 \times 9/32$ inches can be made to fill the entire negative area.

Accessories: The Adjustable Micrometer Extension Tube is the ideal adjunct to the Focaslide, as it allows

a wide range of Leica lenses to be used for copying work. Without adapters, it accepts all Leica lenses and gives a 20mm. range of adjustment between a 40mm. and 60mm. length of Extension Tube. Micrometer indexing of the mount enables accurate settings to be maintained for varying scales of copying work. Adapters are available for all 90mm., 127mm. and 135mm. Leica lenses to convert the Adjustable Micrometer Extension Tube into a short focusing mount.

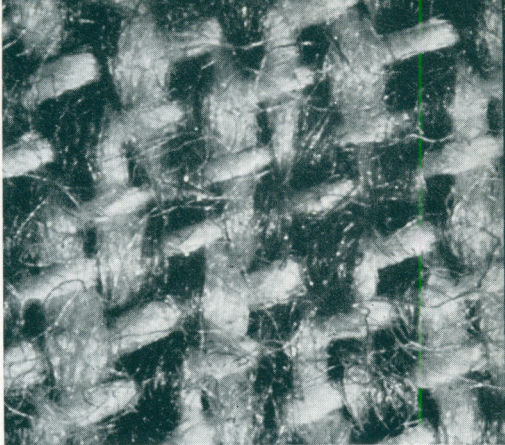
The large Ball Jointed Tripod Head definitely insures freedom from vibration when using the Focaslide on a tripod. Its improved and rigid construction permits the camera to be swung and positively located at any angle. Less than a quarter-turn of the thumb-screw to either left or right, serves to release and lock the tripod screw instantly without effort.

The Intermediate Focusing Mount insures crisp definition when photographing objects such as manuscripts. It obviates any distortion of the image due to the slight lateral displacement of the lens which will occur if a Leica Camera lens, attached directly to the Focaslide, is focused in its free position.

Large Wide Field Focusing Magnifier 5X facilitates rapid focusing of objects on the ground glass screen of the Focaslide. Extreme accuracy of focusing is assured with the Magnifier for observing the air-image on the clear center-spot of the screen.



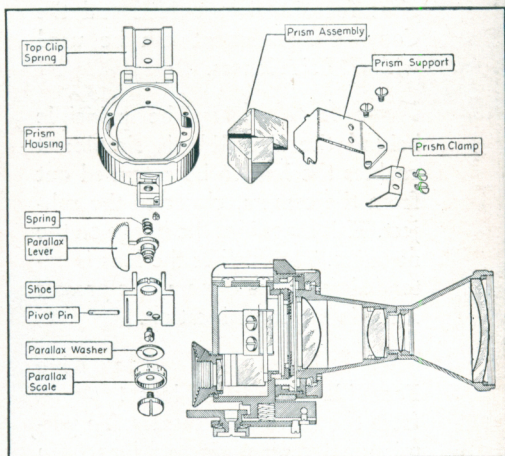
Nature Work



Macrophotography



Ophthalmic Studies



Microfilming

**These Picture-Making Possibilities Are Yours
When Using the FOCASLIDE ATTACHMENT . . .**

Copying
Nature Photography
Microfilming
Flower Photography
Insect Photography
Scientific Photography
Medical Photography
Educational
Photography
Dental Photography

Legal Photography
Macrophotography
Philatelic Photography
Laboratory
Photography
Ophthalmic
Photography
Architectural Detail
Photography
Photomicrography

Research Photography
Fingerprint
Photography
Duplicating Black and
White and Color
Slides
Making 2 x 2 in. Slides
from large
transparencies
Making Slidefilms

E. LEITZ, Inc., 304 Hudson Street, New York 13, N. Y.