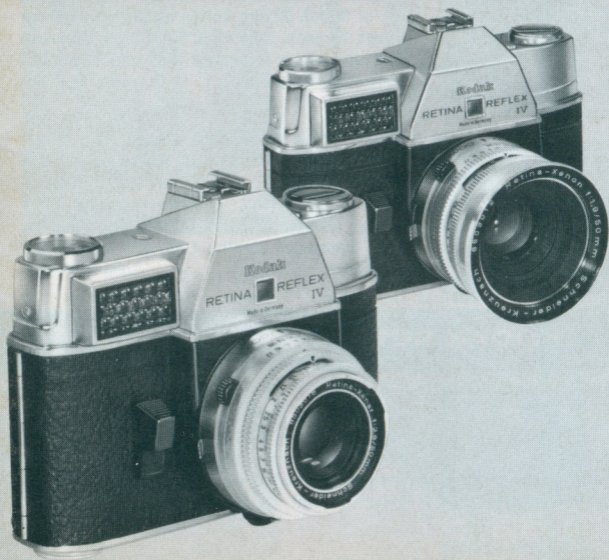


Kodak

RETINA REFLEX IV

CAMERAS
AND AIDS

MASTERS OF EVERY SITUATION



- **SUPERB** picture-taking instruments for the serious, discriminating user.
- **NEW** "information center" viewfinder for total picture control.
- **TWO-WAY** photoelectric exposure control with shutter-linked lens settings.
- *f/2.8* model for versatility at low cost; *f/1.9* for extra speed, greatest capacity under difficult light-and-action conditions.
- **COMPLETE** family of interchangeable lenses and other aids for special work.

WHY THESE CAMERAS MAKE YOU MASTER OF EVERY SITUATION

"Information center" viewfinder gives you utmost control over exposure, composition, focus, action. Brilliant pentaprism with Fresnel field lens shows subjects "life-size" on bright full-area ground glass. Rangefinder aids focusing in dim light.

Exposure system sets for film speeds from ASA 10 to ASA 1250.

Exposure control on top of camera and in viewfinder — both coupled to lens and shutter setting.

Sturdy, sensitive, dependable electric eye measures both reflected and incident light.

Camera back swings fully open for easy, rapid loading.

Rapid single-stroke film-wind lever on bottom of camera.

Smooth, easy-to-operate shutter release placed for maximum convenience.

Shoe bracket with contact for cordless flash holder.

Handy fold-out crank for rapid film rewinding —assists quick unloading and reloading.

Famous KODAK RETINA Camera smartness of detail and styling.

Direct optical pickup makes lens and shutter setting visible in viewfinder — part of camera's "total picture control."

Shutter 1 second to 1/500; focusing to 2 feet.

Automatic depth-of-field indicators show zone of sharpness for each focus setting.

Automatic diaphragm—lens always wide open for focusing, stops down to chosen aperture at moment of exposure.

Built-in self-timer.

Automatic linkage between lens aperture and shutter speed rings gives "constant-exposure" combinations. Change of shutter speed automatically adjusts lens opening.

Choice of fine, sharp, coated and color-corrected lenses in a wide range of focal lengths—standard 50mm f/2.8 and ultra-speed f/1.9, and others from 28mm to 200mm, for utmost versatility.

The KODAK RETINA Reflex IV Cameras are not designed for people who simply want to "aim and shoot" routine subjects—although they can be used in that way.

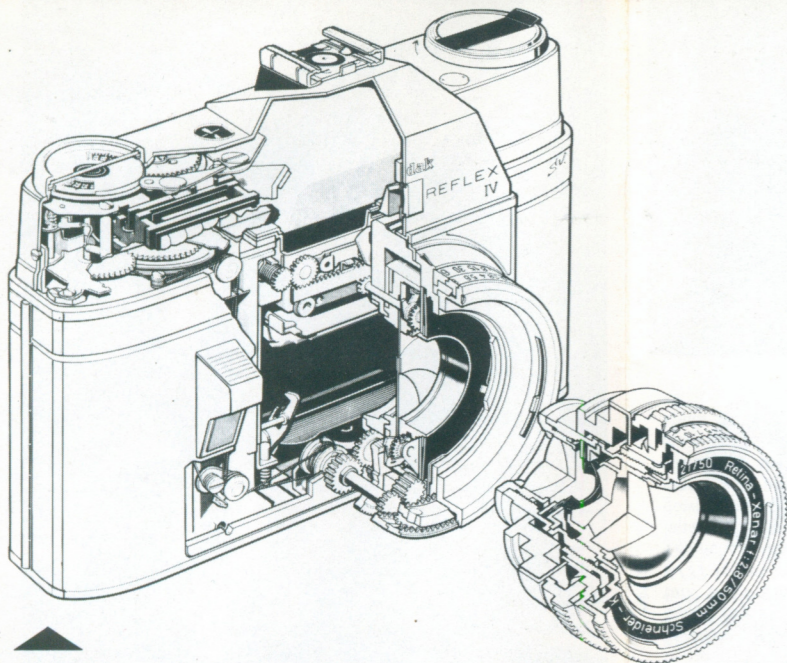
Rather, they are designed for the serious and discriminating photographer who wishes to cover a wide range of subjects, or delve into special areas of subject-matter—and do it with equipment that gives him mastery and control.

That is why these cameras are equipped with fine, sharp lenses . . . pentaprism finders for precise composing . . . ground-glass and rangefinder focusing for critical sharpness . . . precision photoelectric controls to measure light accurately for correct exposure . . . fast shutters that cope easily with action subjects . . . field depth indicators that permit exact control of the zone of sharp focus.

These and other special features make operation easier . . . eliminate guesswork . . . and extend the range of capabilities. They are the features which truly make you "master of every situation."

And in addition to the basic features built into the cameras, there is a complete system of supplementary aids—wide-angle lenses to embrace more subject-matter at close range, telephoto lenses which reach out to distant subjects, close-up lenses to handle very small subjects, microscope attachments, filters for pictorial control. It is a system that lets your capabilities grow as your picture interests grow.

Total picture control, and mastery of every situation. These are the big reasons to own a KODAK RETINA Reflex IV Camera.



The cutaway drawing above does no more than suggest the intricacy and precision of a KODAK RETINA Reflex IV Camera. The complete camera, including the lens, shutter, and photo-electric exposure system, consists of 932 parts. To produce it, 5500 production steps are required; and of these, nearly 2000 are tests and inspections. Many types of metal, glass, and other materials are required, in many forms—such as steel wire with a diameter of 0.05mm and a tolerance of 0.005mm for tiny springs. Some parts are so small that assembly takes place under a magnifying glass. The final result is a superb instrument, designed for exacting performance.

A KODAK RETINA Reflex IV Camera is more than “just another camera.” It is the embodiment of a 35mm camera tradition that extends back thirty years . . . through many precision models . . . embracing a vast fund of 35mm experience.

The first KODAK RETINA Camera appeared in 1934. In the past 15 years, more than three million RETINA Cameras of various types have been shipped throughout the world . . . to more than 100 countries . . . on every continent.

In Europe, where fine-camera ownership is a tradition, the RETINA Cameras stand in the first rank of fine-camera popularity.

How are these great cameras produced? And what are the production techniques that make them famous throughout the world as one of the few great 35mm camera families?

First, they are produced in one of the most modern camera factories in the world—equipped with every mechanical facility and special tool required to make them precise and dependable. Second, they are produced, assembled, and tested by expert craftsmen, whose skills are formed in years of training and sharpened by years of 35mm experience.

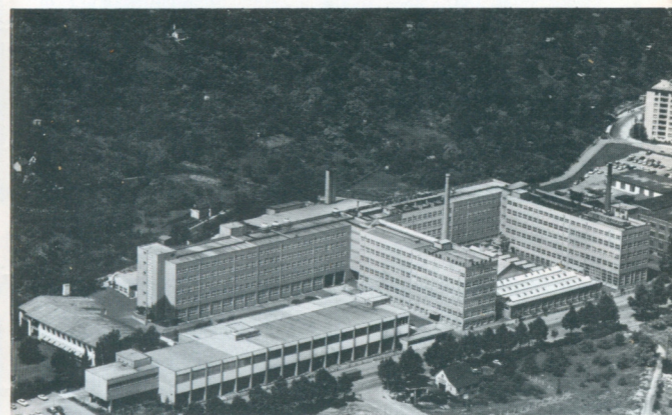
In all, there are some 2,300 people employed in this factory, and many of them have been engaged in RETINA Camera production for more than 25 years. These craftsmen, technicians, and engineers are the invisible “933d part” that makes the other 932 parts in your RETINA Reflex IV Camera perform so well.

Training, testing, inspection, retesting—these are the key elements in KODAK RETINA Camera production. In a special apprentice-shop, young workers are kept for four years under the tutelage of old-timers, to learn the art of camera construction. This training aims both at absolute precision and at the development

of responsibility—the sense of pride and craftsmanship that are at the heart of the RETINA Camera tradition.

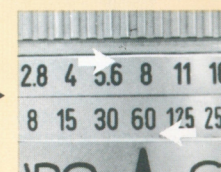
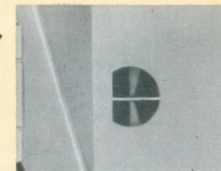
The stress on accuracy and precision extend through all the mechanical operations . . . in tools whose tolerances are measured in thousandths of a millimeter . . . in the testing of raw materials . . . in each step of fabrication and assembly . . . in sub-assembly testing and final testing of the completed camera. A single sub-assembly, such as the camera’s gear housing, may require some 75 finishing operations, such as countersinking, de-stressing, sandblasting, cauterizing, copper-plating, engraving, nickel-plating, chrome-plating, second cauterizing, and final lacquering of the engraving. Each step must conform to the RETINA Camera standard, make its contribution to over-all excellence.

This is why—when you join the KODAK RETINA Camera fraternity—you know you have a photographic instrument of the highest excellence; one you can use with confidence and own with pride.



Features that invite you to own a **KODAK RETINA Reflex IV** Camera

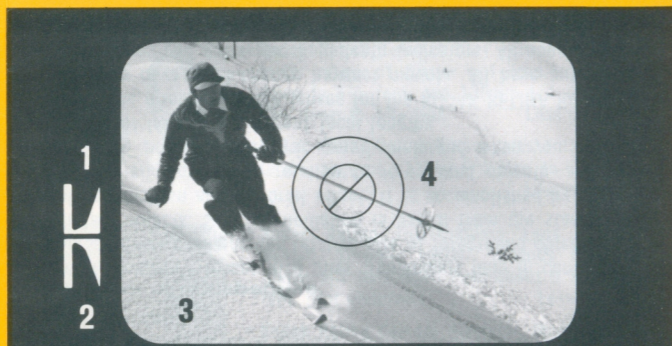
- Direct meter-guided two-way exposure control. Center meter needle either on top of camera or in viewfinder.
- True full-area focusing—from corner to corner of the viewfinder—on bright, fine-grained ground glass.
- Clear split-image rangefinding, centered in the ground glass, for precision focus even in dim light.
- Brilliant “life-size” pentaprism viewing—and automatic diaphragm, wide open for viewing, that drops down when you shoot.
- Flash synchronization with all flashbulbs and with electronic flash.
- Two flash outlets—contacts in the accessory clip for the cordless KODABLITZ Flashholder, and a socket for cord connectors.
- Choice of superb basic lenses, f/1.9 and f/2.8, focusing to 2 feet, plus full series of wide-angle and telephoto lenses—all with automatic diaphragm and field-depth indicators, and all coupled to the camera controls.
- Automatic lens-opening adjustment as shutter speeds are changed, to keep exposure constant. This adds speed and sureness when subjects and action are changing.
- No parallax error with any lens at any range—not even when using supplementary lenses for extreme close-ups, as near as 6 inches film-to-subject.
- Automatic field-depth control—two red pointers move as you set the lens aperture and automatically show the near and far range of sharpness.
- Wide-range shutter—from 1 full second to 1/500 second for fast action, plus a “B” setting for long exposures, and a built-in self-timer.
- Smooth, fast-action, single-stroke thumb lever film advance, for fast-changing action situations and sequences.
- Automatic shutter setting, exposure count, double-exposure prevention with provision for multiple exposures.
- Convenient, rapid rewind crank for swift unloading of exposed film; folds away when not in use.
- The beauty of styling and craftsmanship that have made the name “KODAK RETINA” famous all over the world.



THE **RETINA** REFLEX IV “INFORMATION CENTER” VIEWFINDER AND THE “TOTAL PICTURE CONTROL” IDEA

Look through this camera’s viewfinder—and you see all the data you need to keep control of the picture situation:

- 1 Center the exposure control needle between the brackets, and exposure setting is correct.
- 2 A special red warning signal appears if the lens and shutter are set for a range of exposure combinations that do not fit the existing light.
- 3 The bright full-area ground glass shows you clearly when your subject is in focus; and nothing projects into it to inter-



1
2

5.6
500

5

fer with easy composition. The frame accurately embraces the area that will be included in your final mounted transparency.

- 4 The rangefinder’s diagonal split field lets you focus on either a vertical or horizontal object without shifting camera position.
- 5 You see both the lens aperture and shutter speed you have set—can tell instantly if they are correct for the subject—without moving the camera from your eye.

Thus—by constantly keeping you informed on exposure, focus, framing, shutter speed, lens aperture—the viewfinder keeps you “on top of the situation.” It gives you **total picture control**.

Plus a wide range of special photo-aids—to let you explore new fields of subject-matter as your interests grow. See inside.



Interchangeable lenses put you in command of image magnification, distance, and the manipulation of perspective.

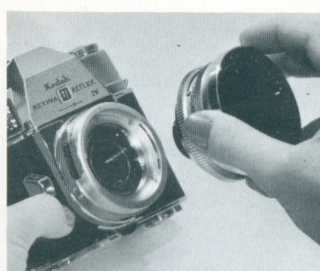
The series of such lenses for the KODAK RETINA Reflex IV Cameras provides a complete set of valuable tools. Wide-angle 28mm and 35mm lenses enable you to shoot in close quarters, embrace more subject-matter from a given distance. A moderate telephoto lens, the 85mm, narrows down the field, helps cut off undesirable background, and provides more pleasing results in close-ups of people. And longer telephotos, the 135mm and 200mm, reach out to

pull in distant subjects, scenics, sports situations, wildlife in its natural habitat.

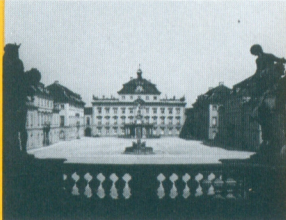
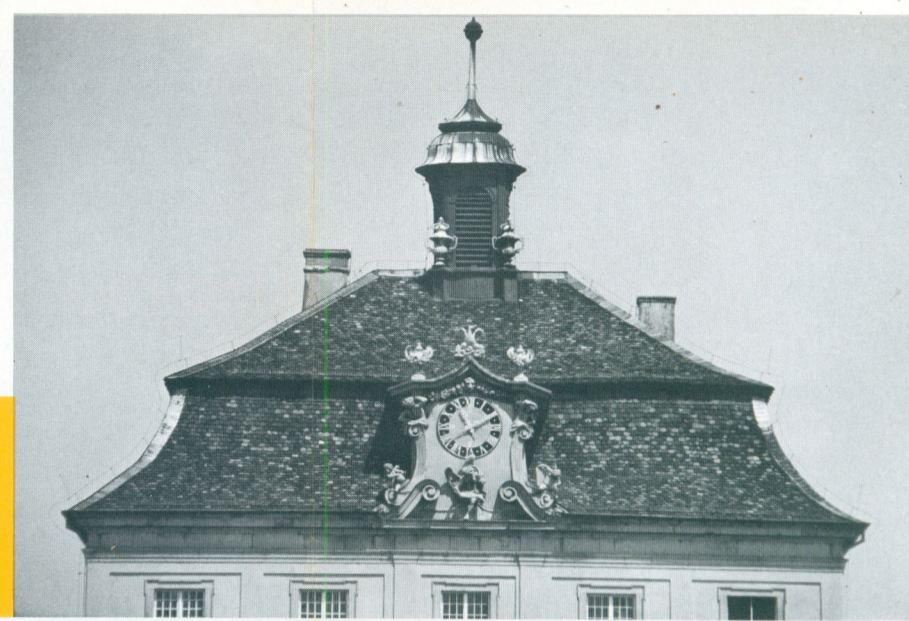
Control of Perspective

Interchangeable lenses also offer tremendous help in controlling perspective—changing the relative size of foreground objects and distant objects. Such manipulation is useful from the standpoint of composition and pictorial effect. It is accomplished by changing camera position in relation to foreground objects—and the range of possible effects is greatly enlarged when you have a choice of lenses of different focal lengths.

All the interchangeable lenses for the KODAK RETINA Reflex IV Cameras have quick-change bayonet mounts. All have automatic diaphragms and automatic field-depth indicators. All couple automatically to the camera rangefinder and other controls.



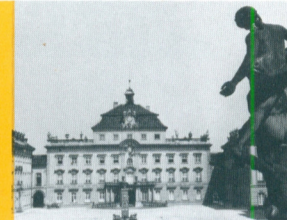
A short turn—and the camera lens is released for quick switch to one of longer or shorter focal length.



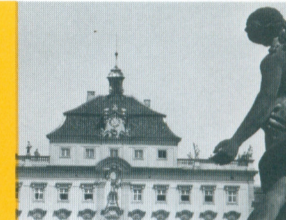
28mm lens embraces widest possible view when you want to "get it all in."



35mm lens provides field in between the extreme 28mm and standard 50mm.



50mm lens is basic. All these pictures were shot from same camera position.



85mm is moderate telephoto, also much prized for close-ups of people.



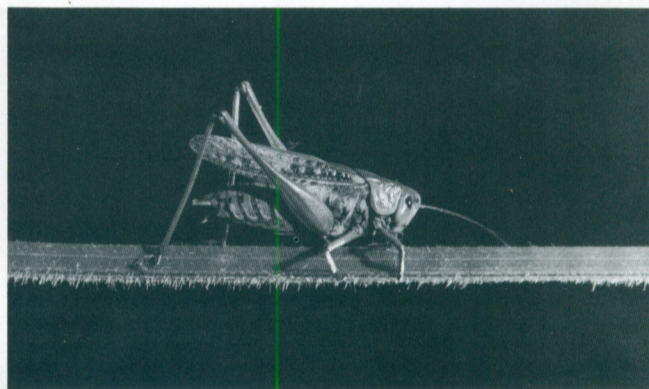
135mm reaches out, pulls in distant detail; is a favorite for sports shots.

200mm gives huge magnification (compare this with same area in 28mm shot).

KODAK RETINA Filters provide additional pictorial control in black-and-white and color shots; are available to fit all lenses.



Close-up lenses attach to the 50mm lenses, enable you to picture small subjects in large size. N/32 lenses bring you as close as 12 inches, film-to-subject. Type R lenses let you shoot even closer—down to about 6 inches. The extra-close view produces pictorial impact, and these lenses open up many new opportunities and new kinds of subject-matter.



Photomicrography lets you record the tiny worlds that lie beyond the range of the unaided eye, and bring minute subjects up to vast size in prints or on your color-slide screen. The Kodak Retina Microscope Adapter Kit allows you to use the Reflex IV f/2.8 model with most microscopes—helps make photomicrography easy and rapid.



Collectors of small specimens often wish to photograph small subjects in actual size—to be magnified to enormous size on the projection screen. This is easy with a Kodak Retina Reflex IV Camera and the 1:1 Copying Kit. This kit also lets you make negatives from your color slides.



All Kodak Retina Reflex IV aids are part of a larger system which has been developed systematically over a period of years. The aim has been not to multiply useless aids, but to concentrate on performance—with devices that provide a maximum of usefulness and versatility in return for the investment.

This system has followed natural lines of growth, based on experience and progressive development of many Kodak Retina Camera models. Many of the aids pictured below can be used with earlier models—such as the Reflex III, Reflex S, IIS, IIIC, IIIC, Automatic III. Those which have specific use with the Reflex IV are marked with a star.

KODAK RETINA Interchangeable Lenses

KODAK RETINA Close-up Aids

KODAK RETINA Lens Hoods

KODAK RETINA Filter Cases



* **Kodak Retina Xenar Lens, 50mm f/2.8** (for Reflex IV, Reflex III, and Reflex S cameras)—Fast "standard" lens. 4 elements. Coated. Focusing range: 2 feet to "Inf." Automatic depth-of-field indication. Supplied in storage case. Less than \$53.



* **Kodak Retina Xenon Lens, 50mm f/1.9** (for Reflex IV, Reflex III, and Reflex S cameras)—Ultra-fast "standard" lens. 6 elements. Coated. Focusing range: 2 feet to "Inf." Automatic depth-of-field indication. Built-in lens hood. Supplied in storage case. Less than \$88.



* **Kodak Retina Curtagon Lens, 28mm f/4** (for Reflex IV, Reflex III, and Reflex S cameras)—Extreme wide-angle lens. 7 elements. Coated. Focusing range: 3 feet to "Inf." Automatic depth-of-field indication. Built-in lens hood. Supplied in storage case. Less than \$87.



* **Kodak Retina Curtagon Lens, 35mm f/2.8** (for Reflex IV, Reflex III, and Reflex S cameras)—Moderate wide-angle lens. 5 elements. Coated. Focusing range: 3 feet to "Inf." Automatic depth-of-field indication. In storage case. Less than \$75.



* **Kodak Retina Tele-Arton Lens, 85mm f/4** (for Reflex IV, Reflex III, and Reflex S cameras)—Medium telephoto lens. 5 elements. Coated. Focusing range: 6 feet to "Inf." (Add Tele-Auxiliary Lens T 1/32 for closer range.) Automatic depth-of-field indication. In storage case. Less than \$79.



* **Kodak Retina Tele-Xenar Lens, 135mm f/4** (for Reflex IV, Reflex III, and Reflex S cameras)—Long telephoto lens. 5 elements. Coated. Focusing range: 14 feet to "Inf." (Add Tele-Auxiliary Lens T 1/60 or T 1/60 for closer range.) Automatic depth-of-field indication. In storage case. Less than \$88.



* **Kodak Retina Tele-Xenar 200mm f/4.8 Lens Kit** (for Reflex IV, Reflex III and Reflex S cameras). Coated. 7 elements. Range 28 feet to "Inf." Complete kit includes fitted case, lens hood, lens caps, three filters, and spare filter mount. Provides 16 times the area magnification of normal 50mm lens. Less than \$226.

Special KODAK RETINA Finders



* **Kodak Retina Right-Angle Finder** (for Automatic III, Reflex S, Reflex, and IIIC cameras, and with adapter, Reflex IV, III, and IIF). For low-angle views, copying and similar subjects. Fits over eyepiece of the camera. Less than \$20.



* **Kodak Retina Close-Up Lens Set, Type N/32** (for Reflex IV, III and S, 50mm f/2.8, and Reflex cameras). Lenses used singly and in combination cover picture-taking range from 38 3/4 to 12 inches. Less than \$11. **Type N/60 Set**, fits 50mm f/1.9 lens. Less than \$22.



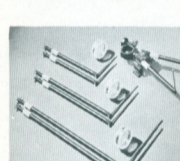
* **Kodak Retina Close-Up Lens Set, Type R** (for Reflex IV, III and S, 50mm f/2.8 and Reflex cameras)—Contains R1-4.5, R1-3, and R1-2 auxiliary lenses. Used singly or in combination cover range from 1 1/2 to 5 1/2 inches film-to-subject distance. Less than \$23.



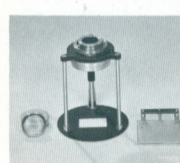
* **Kodak Retina Step-Down Ring**. Permits use of single 32mm-diameter N/32 and R close-up lenses above with the 60mm-diameter Kodak Retina Xenon Lens, 50mm f/1.9. Less than \$4.55



Kodak Retina Close Range and View Finder Kit, Model C (for Kodak Retina IIF, Automatic III and Retinette cameras). Parallax-correcting viewfinder combined with rangefinder. Supplied with two auxiliary lenses and case. Extends camera range down to 12 1/4 inches film-to-subject. Less than \$37.



Kodak Retina Close-Up Kit, Model C (for IIF, Automatic III, IIIC and IIC cameras). For very close work. 3 close-up lenses, 4 field guides with holder. (Requires Camera Platform.) Less than \$43.



* **Kodak Retina 1:1 Copying Kit** (for Reflex IV, Reflex III, and Reflex S f/2.8 cameras). For natural-size (1-to-1 scale) pictures, duplicates of 24x36mm transparencies, and same-size positives from 24x36mm negatives. (Use of same cameras with f/1.9 lenses requires Step-Down Ring.) Less than \$40.



* **Kodak Retina Tele-Auxiliary Lens T 1/60**. Extends range of 80mm f/4 lens component down to 3 1/2 feet, and 135mm f/4 lens from 6 1/2 down to 4 3/4 feet. Less than \$14.



* **Kodak Retina Tele-Auxiliary Lens T 1/60**. Extends range of 135mm f/4 lens to 6 1/2 feet. Less than \$14.



* **Kodak Retina Tele-Auxiliary Lens T 1/32**. Coated. Screw-in mount. Extends range of 85mm f/4 lens down from about 6 feet to 3 feet. (Not pictured.) Less than \$7.

* **Kodak Retina Camera Platform, Model C**—Fits bottom of camera, providing centered tripod socket. Required when using Close-Up Kit, Model C (see above). Less than \$6.



* **Kodak Retina 35-50 Lens Hood, Bayonet Type** (for Reflex IV, Reflex III and Reflex S cameras with 35mm or 50mm f/2.8 lens). Less than \$2.55



* **Kodak Retina 35-50 Lens Hood Extension** (for 85mm f/4 lens). Slips on 35-50 to make deep hood for 85mm lens. Less than \$1.55



* **Kodak Retina 32 Lens Hood** (fits 50mm and 35mm f/2.8). Flexible, rolls back when not in use. Not pictured. Less than \$2.30

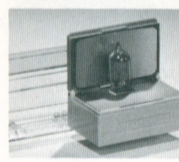


* **Kodak Retina 135 Lens Hood** (for 135mm f/4 lens)—Slip-on type. Less than \$2.55



* **Kodak Retina Lens Hood** (for 28mm f/4 and 50mm f/1.9). Slip-on. Not pictured. Less than \$3.

Flash & Photomicrography Aids



* **Kodablitz Flasher** (cordless). Fits shoe on top of Kodak Retina Reflex IV Camera, making direct contact; uses AG-1 flashbulbs. Exposure data on back of fold-down reflector. Very compact and efficient. Less than \$7.



* **Kodak Retina Microscope Adapter Kit, Model D** (for Reflex IV, Reflex III, Reflex S, and IIS with 50mm f/2.8; Automatic III and IIF cameras)—For making photomicrographs. Fits nearly all microscopes. Includes clamping ring, diaphragm locking ring, and lens mount extension. Less than \$63.

KODAK RETINA Camera Cases



* **Kodak Retina Field Case, Model F** (for Reflex IV f/2.8, Reflex III f/2.8, Reflex S f/2.8, and Reflex cameras)—Top-grain brown leather. Chrome-finished metal trim; plush lined; removable front; adjustable neck strap. Less than \$15.



* **Kodak Retina Field Case, Model G** (for Reflex IV f/1.9, Reflex III f/1.9, and Reflex S f/1.9 cameras)—Top-grain brown leather. Chrome-finished metal trim; plush lined; removable front; adjustable neck strap. Also accepts above cameras with 28mm f/4, 35mm f/2.8, 50mm f/2.8 and 85mm f/4 lenses. Less than \$18.



Kodak Retinette IA Field Case. Less than \$10.

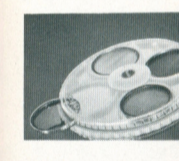


Kodak Retina Field Case, Model E (for Automatic III camera). Similar to Retinette case pictured at left. Less than \$13.

* **Kodak Retina Fitted Case, Model C**. Top-grain leather, chrome trim; stores three lenses or components 28mm to 135mm, and photo aids such as lens hood, filters, close-up and tele-auxiliary lenses. Less than \$35.

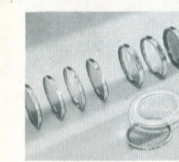


* **Kodak Retina Filter Compartment Case, Model B**—For three 32mm diameter filters, Kodak Retina lens hood, Bayonet Type (for 50mm lens) and Extension for it or Kodak Retina 35-50 lens hood, Bayonet Type and Extension for it, or Kodak Retina 45 lens hood. Less than \$4.30



* **Kodak Retina 8-Filter Pocket Case**—For four 32mm diameter filters for color films and four 32mm diameter filters for black-and-white films. Less than \$4.55

KODAK RETINA Filters



* **32mm filters for:** Xenar 50mm and 45mm f/2.8, Curtagon 35mm f/2.8, Tele-Arton 85mm f/4, Xenon C 50mm f/2.8 and f/2, Curtar 35mm f/5.6, and Reomar 45mm f/2.8. Less than \$4.55

* **60mm filters for:** Xenon 50mm f/1.9, Curtagon 28mm f/4, Tele-Xenar 135mm f/4, Curtar 35mm f/4, Longar 80mm f/4. Less than \$15.

✓ Indicates availability in size shown below.

Kodak filters for Black-and-White Films	32mm	60mm
FII Yellow-Medium (similar to Wratten K2)	✓	✓
FIII Yellow-Green (similar to Wratten X1)	✓	✓
FIV Orange (similar to Wratten G)	✓	✓
FV Red (similar to Wratten A)	✓	✓

Kodak filters for Color Films		
1A Skylight filter	✓	✓
80B Photoflood filter	✓	✓
85 Daylight filter for Type A Film	✓	✓
85B Daylight filter for Type B Film	✓	✓

KODAK Adapter Rings

* **Kodak Adapter Rings** (screw-in) adapt the Kodak Retina lenses to units of the Kodak Combination Lens Attachment system, permitting use of Kodak Portra Lenses, Pola-Screens, other lens hoods, and other filters. The following Adapter Rings are available:

- No. 532—adapts Series 5 attachments to 32mm diameter Retina lenses. Less than \$2.55
- No. 629A—adapts Series 6 attachments to 32mm diameter Retina lenses. Less than \$3.05
- No. 81—adapts Series 8 attachments to 60mm diameter Retina lenses. Less than \$8.30

For technical data on the KODAK RETINA Reflex IV Camera—see other side

TECHNICAL DATA

KODAK RETINA Reflex IV Cameras

FILMS: 20 or 36 exposure magazines, KODAK No. 135. Negative size, 24x36mm.

LENSES: 50mm f/2.8 RETINA-Xenar f/2.8 (4 elements) or f/1.9 RETINA-Xenon (6 elements). Focusing from 2 feet to infinity.

Interchangeable with wide-angle (28 and 35mm) and telephoto (85, 135, and 200mm) lenses. All lenses have automatic depth-of-field indication. Also automatic diaphragms—wide open during focusing and viewing, automatically closed down to the metered f/stop as the shutter is released.

EXPOSURE CONTROL: Two-way. Photoelectric. Sets for film speeds ASA 10 to 1250. Measures reflected light; and incident light with mask supplied. As lens opening is set to correct point, control needle centers itself between brackets, visible both in finder and in window on top of camera. Special automatic signal near brackets indicates if light conditions are excessively dim or bright for the exposure range (aperture-shutter combinations) in use; shows need for changing to a different range. Shutter speed setting and f/stop setting in use are directly visible in viewfinder.

FOCUSING: Full-area ground glass with Fresnel lens for added brightness; and coupled, split-field rangefinder. Also scale focusing in feet and meters.

VIEWING: Pentaprism provides right-side-up, and correct left-to-right viewing. An unobstructed, extra-bright field accurately represents the area of the mounted transparency. Viewfinder permits complete picture control at a glance: field, composition, focus, f/stop, shutter speed, and correctness of exposure, and permits changes with the camera in picture-taking position.

SHUTTER: Synchro Compur-X, 1 to 1/500 second, and "B"; green scale indicates exposure needs up to 250 seconds. Linked shutter speed and diaphragm—changing the former automatically adjusts the latter, thus maintaining the same exposure. Built-in self-timer, 10 seconds delay.

FLASH SYNCHRONIZATION: Two flash outlets—in accessory bracket for cordless flash holder such as KODABLITZ, and on front of camera for cord-type flash holder. Electronic flash synchronizes at all shutter speeds; flash bulbs, at speeds up to 1/30 second.

FILM HANDLING: Rapid one-stroke thumb lever. Automatic shutter setting, exposure count; double-exposure prevention with provision for multiple exposure. Handy fold-out crank for rapid film rewinding. Automatic counter return.

CONSTRUCTION: Traditional RETINA Camera quality, precision, and styling.

PHOTO AIDS: Comprehensive line of interchangeable lenses, supplementary lenses, copying kit, microscope adapter, filters, cases, and others greatly extend the scope of the RETINA Reflex IV Cameras.

PRICES:

KODAK RETINA Reflex IV Camera with 50mm f/2.8 lens. . Less than \$243.

KODAK RETINA Reflex IV Camera with 50mm f/1.9 lens. . Less than \$278.

Prices subject to change without notice.