

Adlake Cameras



Taken with an Adlake

Negative by W. M. Butler, St. Louis

Winter

Adlake Cameras

1900

The Adams & Westlake Company

110 Ontario Street :: Chicago



Taken with an Adlake

Negative by H. T. Lockwood, New York

On the Beach

Happy
Hours



Taken with an
Adlake



Taken with an Adlake

Negative by J. M. Bolton, Sioux City, Ia.

The Approaching Storm

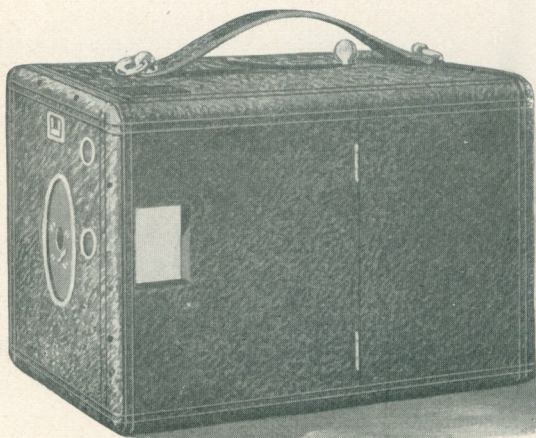
(This picture won first prize at the Sioux City Camera Club Salon).

Adlake Cameras

Prices

4 x 5 Special, with 12 Aluminum Light-tight Plate-holders	\$13.50
4 x 5 Regular, with 12 Steel Light-tight Plate-holders	12.00
(Otherwise same as the Special)	
3¼ x 4¼ Regular, with 12 Steel Light-tight Plate-holders	9 00
4 x 5 Repeater, with 12 Steel Plate-holders	10.00
3¼ x 4¼ Repeater, with 12 Steel Plate-holders	8.00

Buy of your own dealer, if you have any such. If not, we send the Camera and sundries, express paid, anywhere in the United States—*not sundries alone.*



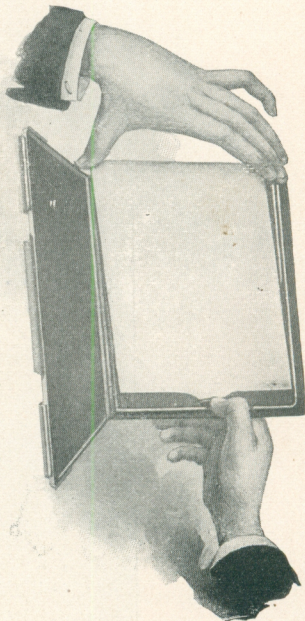
The Adlake Regular & Adlake Special

The Adlake Regular

&

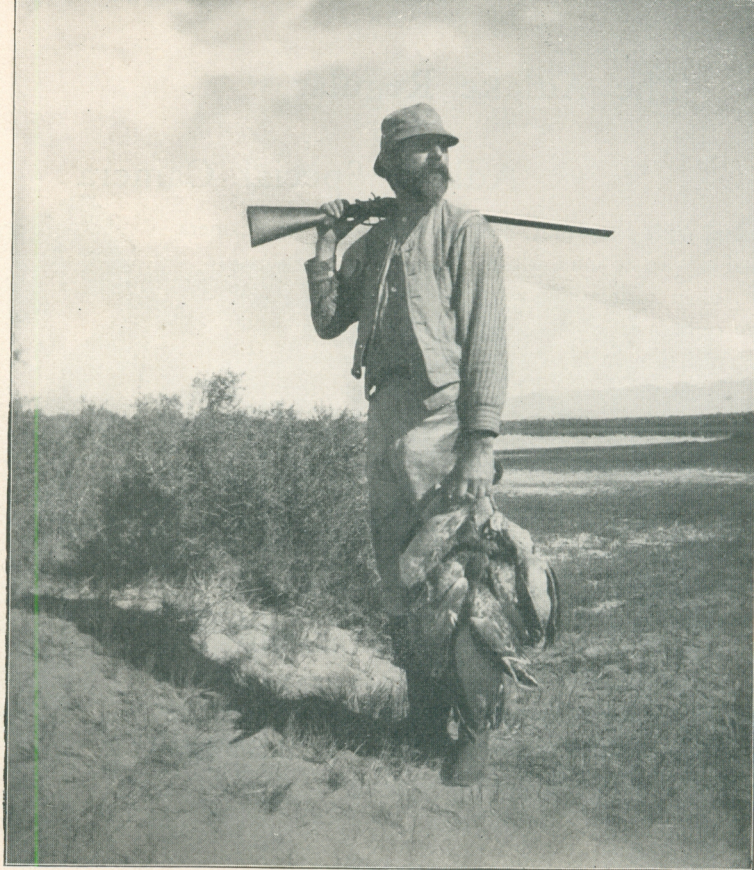
Adlake Special Camera

Twelve metal *light-proof* plate-holders accompany each camera and allow the use of two or more kinds of plates, at the pleasure of the operator. When loaded the holders may be adjusted in, and taken out of, the camera in broad daylight. Exposed plates may be removed from the camera in sunlight by merely opening the camera and taking out the plate-holder desired, leaving the unexposed plates undisturbed. Adlake plate-holders are very compact. They are light, thin steel or aluminum portfolios, formed at the edges to shut out light, and blackened, and open and close like a watch case. The plate-holders are numbered from one to twelve, for convenience in keeping a record of exposures. There are no other plate-holders so good—no exception—whatever the cost of the camera. The Adlake Lens is the *best* achromatic single meniscus the Bausch & Lomb Optical Company can make. The reason so many leading professional photographers endorse the Adlake is mainly on account of the superiority of the lens, which does surprisingly good work. No such lens in any other fixed-focus camera. It can be easily and quickly removed for cleaning.



Adlake Plate-Holder

The
Hunter



Taken with
an Adlake

Negative by
Mrs. Ezra T.
Elliott,
Del Norte,
Colo.

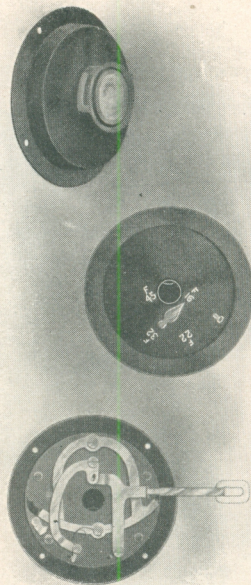
The Adlake Regular



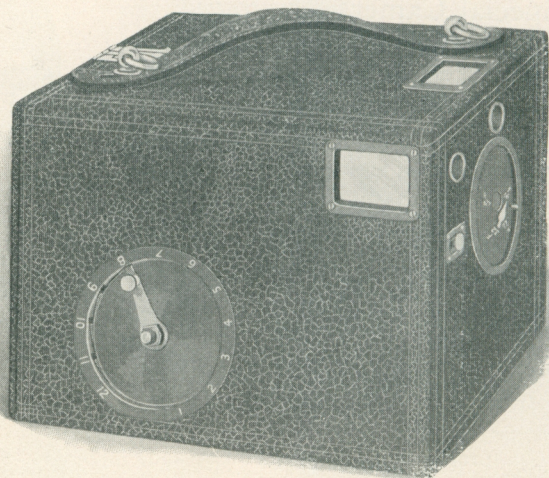
Adlake Special Camera—*continued*

The Adlake Shutter is made of metal throughout and cannot be affected by any possible shrinking, warping or swelling of the shutter-board. This shutter is of a high order of plan and work, will wear forever, and cannot get out of order. There are four stops, numbered according to the F system. The shutter is arranged for both time and instantaneous exposures.

There are two finders of unusually large size, and the finder-boxes are made of metal. Metal trimmings protect all openings. Our patented cover-catch on all cameras. Adlake Portrait Attachment and Adlake Panorama Device, described on another page, accompany each camera. No other fixed-focus camera is so convenient, safe and economical in use; no other camera will show so high a proportion of good pictures, and, everything considered, no other camera is so satisfactory as the Adlake.



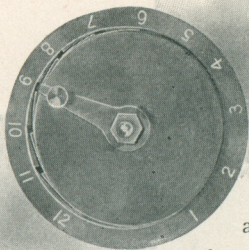
Adlake Shutter.



The Adlake Repeater

The Adlake Repeater

Exposure
Counting
Device



is a particularly appropriate name for our magazine camera. In action it is somewhat similar to the repeating rifle. It holds a dozen plates, which may be exposed in rapid succession by a slight turn of a lever, which removes the exposed plate and allows a fresh plate to move forward, ready for exposure.

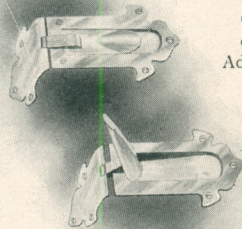
The Exposure-Indicating Device is simple and positive in action and its locking arrangement prevents the release of more than one plate at a time.

The spring lock catch securely holds the exposed plates, and they cannot be dislodged.

The metal holders which carry the plates are made of thin, black metal, and numbered from one to twelve, for convenience in recording exposures.

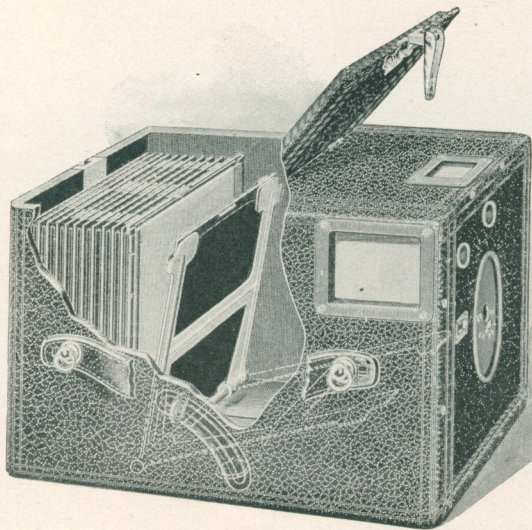
The Repeater is always ready for action.

All cameras have our Adlake lens and shutter, large finders and metal finder boxes, patented cover catch, blackened metal trimmings at all openings, and portrait attachment and panoramic device.



Patented
Cover
Catch
on all
Adlakes

"Picture-taking is a means of culture disguised as pleasure."



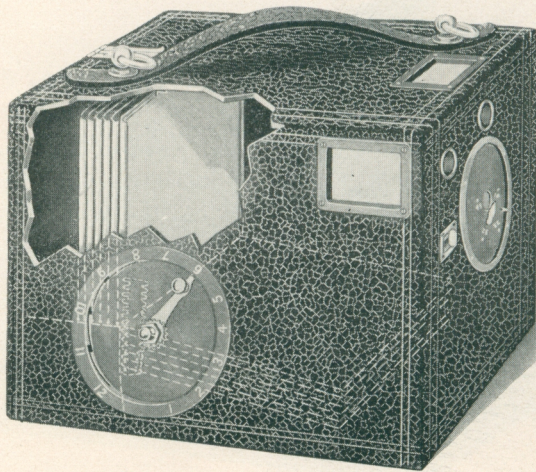
This is the Adlake Regular

The side is partly cut out to show interior.

In the Picture Opposite

You see the dozen plate-holders at the left of the metal partition, the front of which has a groove on each side. The front plate-holder, partly open, is loaded, and is held in position by the grooves in the metal partition. The cover of the plate-holder has two projections at the sides, which fit into the H-shaped fingers operated by the exposure lever. On the side of the box is a curved opening, nearly crescent-shaped. The plate-holder is opened by moving the exposure lever down this curve. After exposure the plate-holder is closed by simply reversing the operation. The camera is then opened and the plate-holder lifted out and placed in the magazine back of the partition. Another holder is taken from the magazine and placed in front of the partition. The plate-holders are light-tight and dust-proof, and can be handled in broad daylight without danger of fogging the plates.

"Picture-taking teaches observation."



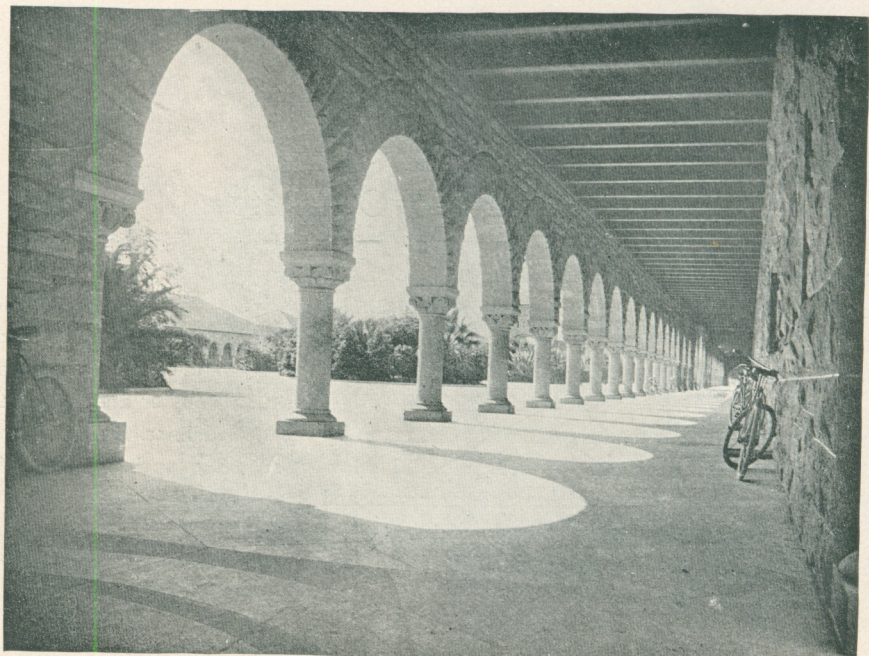
This is the Adlake Repeater

The side is partly cut out to show interior.

The Picture Opposite

Represents the Repeater with a portion of the top and side cut away to show the internal mechanism. You will notice six plate-holders standing upright at the back of the camera. The holders have projecting wires at the bottom (represented by dots) and rest upon metal slides. The front holder (the top rests against a thin strip) has its wires between the teeth of the notched arm. After exposure, the lever is moved one number, which lowers the arm and holder and allows the latter to pass the top strip and fall to the bottom, as indicated by the dotted lines. After the plates are exposed they are raised and released by reversing the lever. A strong spring behind the plate-holder (spring is not shown in cut) moves them forward and keeps the front plate in focal plane. The entire back is hinged and securely fastened by the lock at the top.

The inside of the box is entirely open, and there are no obstructions of any kind.



Taken with an Adlake

Negative by E. H. Kimball

Quadrangle—Leland Stanford University

Attachments for 1900 Adlake Cameras

Adlake Portrait Attachment, given free with each camera, enables one to take good-sized portraits at a distance of three, four, or six feet. This is an advantage which few fixed-focus cameras possess, and greatly increases the usefulness of the camera. Furnished for '97 and '98 Adlakes for 15c. (State serial number of camera when ordering.)

Adlake Panoramic Device is another attachment furnished without charge with each camera. Panoramic pictures are made by taking several photographs (each slightly overlapping) of as large an arc as may be covered on the plate, and the pictures, after trimming, are joined together to make one continuous photograph.

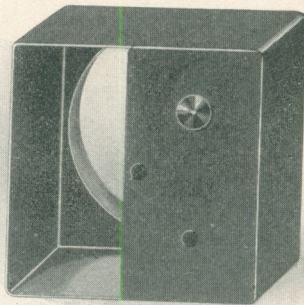
Supplied for '97 and '98 models for 20c.

The Multiplex Device

Illustrated on this page, enables you to take two or four pictures of one object on the same plate. Very amusing pictures can be obtained. It is placed in front of the shutter. If two pictures are wanted on the plate, the object is placed in front of the *open* half of the device, photographed, and then the multiplex device is given a half turn and an exposure made on the other half of the plate. The object to be photographed will have to be placed in position each time.

The Multiplex Device can be used on '97, '98 and '99 model Adlake Cameras, but when ordering it will be necessary to state the serial number of the camera.

Price . . . \$1.00





Taken with an Adlake

Negative by J. P. Neville, Norfolk, Va.

U. S. S. Brooklyn

Price List of Photo Materials

Adlake Carrying Case, black leather,
4 x 5, with shoulder strap, each . . . \$2.50

Adlake Carrying Case, black
leather $3\frac{1}{4} \times 4\frac{1}{4}$, with shoulder
strap, each 2.00



**Adlake Special Extra Rapid
Dry Plates**, 4 x 5, per dozen .65

**Adlake Special Extra Rapid
Dry Plates**, $3\frac{1}{4} \times 4\frac{1}{4}$, per
dozen45

**Adlake Ruby
Lamp** **Stanley Extra Rapid Dry
Plates**, 4 x 5, per dozen . .65

Stanley Extra Rapid Dry Plates,
 $3\frac{1}{4} \times 4\frac{1}{4}$, per dozen45

Cramer's Crown Dry Plates, 4 x 5, per
dozen65

Cramer's Crown Dry Plates, $3\frac{1}{4} \times 4\frac{1}{4}$
per dozen45

Seed's 27 Gilt Edge Dry Plates, 4 x 5
per dozen65

Seed's 27 Gilt Edge Dry Plates, $3\frac{1}{4} \times$
 $4\frac{1}{4}$, per dozen45

**Seed's Instantaneous Non-halation
Plates**, 4 x 5, per dozen \$0.80

**Seed's Instantaneous Non-halation
Plates**, $3\frac{1}{4} \times 4\frac{1}{4}$, per dozen55

Adlake Dark Room Lamp. Has a ground
and spectroscope tested ruby glass, and
gives an absolutely safe light. Burns oil
and the flame is adjustable from the ex-
terior. By means of our binding spring
the shield can be raised or lowered to
any position desired. Each 1.00

Tin Candle Lamp, each20

Developing Trays, black, smooth and
strong. Acid and alkali proof, 4 x 5,
each20

Developing Trays, black, smooth and
strong. Acid and alkali proof, $3\frac{1}{4} \times 4\frac{1}{4}$,
each15

Graduates, 2-ounce, each20

Graduates, 4-ounce, each30

Graduates, 8-ounce, each40

Small Balances, for weighing chemicals 1.00

Price List of Photo Materials—*continued*

Adlake Developing and Printing Outfit, 4 x 5. An exceedingly good outfit. Price \$3.00

CONTENTS:

- 1 Adlake Oil Lamp
- 4 Trays
- 1 4 x 5 Printing Frame
- 1 4-ounce Graduate
- Adlake Developer Powder, for 20 ounces of solution
- Adlake Fixing Powder, for 8 ounces of solution
- Adlake Combined Toning and Fixing Powder, for 8 ounces of solution
- 1 dozen Adlake Printing Paper
- 1 dozen 4 x 5 Mounts

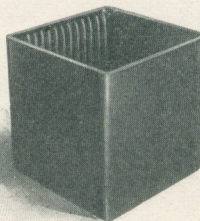


Adlake Developing and Printing Outfit, 4 x 5

Hard Fibre Fixing Baths, 4 x 5, each bath holds 12 plates, each 1.50

Metal Fixing Baths, coated with preparation impervious to hypo. Holds 7 plates. Price, $3\frac{1}{4} \times 4\frac{1}{4}$ 50

Metal Fixing Baths, coated with preparation impervious to hypo. Hold 7 plates. Price, 4 x 5, \$0.50



Adlake Developing and Printing Outfit, $3\frac{3}{4} \times 4\frac{1}{4}$. Price, . 2.00

CONTENTS:

- 1 Tin Candle-Lamp
- 3 Trays
- 1 $3\frac{3}{4} \times 4\frac{1}{4}$ Printing Frame
- 1 2-ounce Graduate
- Adlake Developer Powder, for 20 ounces of solution

Hard Fibre Bath Adlake Fixing Powder, for 8 ounces of solution
 Adlake Combined Toning and Fixing Powder, for 8 ounces of solution
 1 dozen Adlake Printing Paper
 1 dozen $3\frac{3}{4} \times 4\frac{1}{4}$ Mounts

Adlake Developer Powder, sufficient for 20 ounces of developing solution25

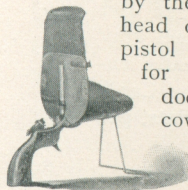
Adlake Fixing Powder, sufficient for 8 ounces of fixing bath15

Adlake Combined Toning and Fixing Powder, sufficient for 16 ounces of solution30

Price List of Photo Materials—*continued*

Glass Funnels, $\frac{1}{4}$ -pint, 10c; $\frac{1}{2}$ -pint . \$0.15

Adlake Flash-Light Pistol. A good, serviceable pistol. The charge is ignited by the hammer striking the head of a parlor match. The pistol with cover can be used for making flashes out-of-doors. Pistol without cover75
Pistol, with cover 1.00



Adlake Flash-Light Pistol, with Cover.

Negative Washing Box, for washing negatives after they have been fixed. Made of zinc. Holds 12 plates, each 1.00

Printing Frames, 4 x 5, each25

Printing Frames, $3\frac{1}{4}$ x $4\frac{1}{4}$, each25

Printing Frames, 4 x 5, extra heavy; best frame made38

Adlake Printing-Out Paper, 4 x 5, per dozen20

Adlake Printing-Out Paper, $3\frac{1}{4}$ x $4\frac{1}{4}$, per two dozen20

Argo Matt, Paper; can be printed by artificial light, 4 x 5, per dozen25

Argo Matt, Printing-Out Paper; can be printed by artificial light, $3\frac{1}{4}$ x $4\frac{1}{4}$, per dozen \$0.15

Etching Matte, a print and wash paper requiring neither fixing nor toning, $3\frac{1}{4}$ x $4\frac{1}{4}$, 20 cents, 4 x 5, per dozen25

French Satin, Jr., Blue Print Paper, 4 x 5, per 25 sheets20

French Satin, Jr., Blue Print Paper, $3\frac{1}{4}$ x $4\frac{1}{4}$, per 25 sheets16

Squeegee or Ferrotypes Plates, 10 x 14 inches, each25

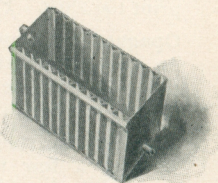
Squeegee Rollers, 6-inch, each35

Amateur Duplex Burnisher, a complete well made, double roll, 6-inch burnisher, including either gas or oil heater. Price, including heater . . . \$5.00

Photo Paste, 2-ounce jar12

Photo Paste, 4-ounce jar20

Photo Paste, 8-ounce jar35



Negative Washing Box

Price List of Photo Materials—*continued*

Negative Racks, for holding negatives while drying, with grooves for 24 plates, each \$0.25

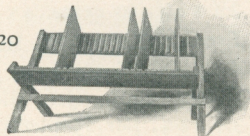
Negative Racks, for holding negatives while drying, with grooves for 12 plates each \$0.20

Negative Intensifier, for increasing the strength or density of negatives which are too weak to make good prints. Price, per 8-ounce bottle35

Negative Reducer, for reducing the thickness or density of negatives which have been over-developed, and consequently print too slow. Price, per 8-ounce bottle .35

Opaque, for retouching negatives. Can be applied to either side of the negative and can be washed off if desired. Price, per 2-ounce bottle40

Neg-Dry, a solution for drying negatives in a few minutes. Hardens and preserves the film, preventing scratch-



Negative Rack

ing or finger marks. Price, per 4-ounce bottle \$0.35

Mounts—"Allesso." A new pattern, rough surface, plain straight edge and round corners. Mode, sage, steel gray or ash gray. This mount greatly enhances the beauty of the print. Cards 5 x 6 for $3\frac{1}{4} \times 4\frac{1}{4}$ and 4 x 5 prints, per dozen12
Per hundred85

Mounts, No. 396, unenameled, wide embossed border, square corners, white, gray or sage green, for 4 x 5 prints, per dozen18
Per hundred 1.35
For $3\frac{1}{4} \times 4\frac{1}{4}$ prints, per dozen15
Per hundred 1.10

Mounts, No. 544, enameled both sides, white embossed border with narrow white line, square corners, white center, with Queen's gray border; an extremely handsome card, for 4 x 5 prints, per dozen24
Per hundred 2.00

Price List of Photo Materials—*continued*

"First Step in Photography," by F. Dundas Todd, very complete; well illustrated; paper	\$0.25
"The Photographic Primer," by J. C. Millen, M. D., and J. C. Worthington. Highly recommended; in cloth	1.00
Tripods—	
JACK-KNIFE; folds and is well made, SLIDING; the lower ends slide within the upper and can be fastened at any height. A strong and serviceable tripod	1.25
COMPACT; slides and folds. Convenient and compact. Will last a lifetime	1.75
Ideal Print Trimmers,	2.50
	.25
Adlake Print Trimmers. Have metal base, measure and steel knife,	
	\$1.50
Albums—	
No. 140, "Photog." 12 4 x 5 openings50
No. 142, "Photog." 24 4 x 5 openings75
No. 130, "Photog." 12 3¼ x 4¼ openings50
No. 132, "Photog." 24 3¼ x 4¼ openings75
BADGER No. 55, 50 4 x 5 openings	1.25
BADGER No. 051, 50 3¼ x 4¼ openings	1.25
BADGER No. 76, 100 4 x 5 openings	2.25
BADGER No. 64, 100 3¼ x 4¼ openings	2.00
BADGER No. 617, 25 10 x 12 ash-gray leaves, morocco grain leather cover,	1.75
BADGER No. 618, 50 10 x 12 ash-gray leaves, morocco grain leather cover,	2.50

Price List of Chemicals

The quality of our chemicals will be found very satisfactory. We carry a large variety and can supply at short notice any chemicals not found in the list. Prices include containers:

Acid, Acetic, No. 8, 8-ounce bottle, . . .	\$0.15	Potassium, Bromide, ounce,	\$0.20
Acid, Citric, ounce,20	Potassium, Carbonate, pound,25
Acid, Pyrogallic, Schering's, ounce,35	Potassium, Oxalate, Neutral, per ½-lb.,	.40
Amidol, ounce,75	Potassium, Red Prussiate, ounce,10
Alum, Chrome, pound,25	Platinite, Chloro-Platinite of Potassium,	
Alum, Powdered, pound,15	15-grain vial,60
Ammonia, Liq. Conc., pound,40	Rodinal, 3-ounce bottle,60
Ammonia, Sulpho-Cyanide, ounce,20	Sodium, Acetate, Cryst., 4-ounce bottle,	.20
Borax, ounce,05	Sodium, Bi-carbonate, 4-ounce,15
Eikonogen, ounce35	Sodium, Carbonate, pound,15
Glycin, ounce,75	Sodium, Hyposulphite, pound,06
Gold Chloride, C. P., 15-grain vial,60	Sodium, Hyposulphite, 5 pounds,25
Hydrochinon, ounce,35	Sodium, Sulphite, Cryst., pound, corked	
Iron, Citrate of Ammonia, ounce,10	bottle,30
Iron, Proto. Sulph., pound.20	Sodium, Sulphate, Granular, pound	
Lead, Acetate, ounce,15	corked bottle,35
Metol, ounce,75	Sodium, Tribasic, Phosphate, 4-ounce	
		bottle,25

Adams & Westlake Iron Bedsteads.

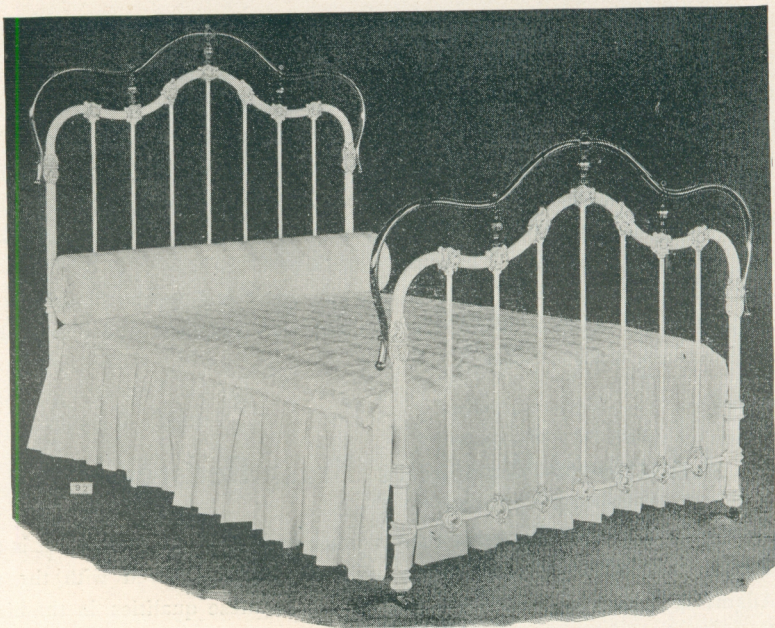
Our bedsteads are known throughout the country as the standard of quality. They excel in beauty of design, in the superiority of enamel, and in the lasting qualities of the lacquer.

You can always tell Adams & Westlake Iron Bedsteads—they have an inherent something that distinguishes them from all others, a style and grace that is found in our bedsteads only. If you have an Adams & Westlake Bedstead you have the world's best.

Your dealer will show you our catalogue and tell you about our special finishes, such as bicycle ivory (hard rubbed), moss green bronze (satin effect), Pompeiian red (soft and beautiful) and Bower-Barff black (a rich soft black without gloss).

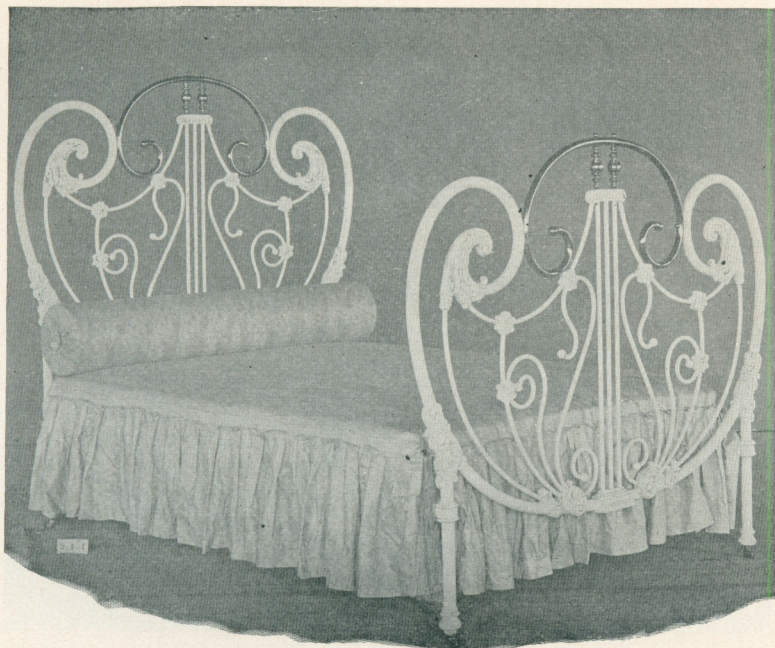
Adams & Westlake Brass Bedsteads.

No piece of furniture is more attractive than a brass bedstead. In selecting it is essential that the article be well made of good material, highly polished, and lacquered with the most durable lacquer. The Adams & Westlake Bedsteads combine all of these qualities in the highest degree. Your dealer will gladly show you our book of designs.



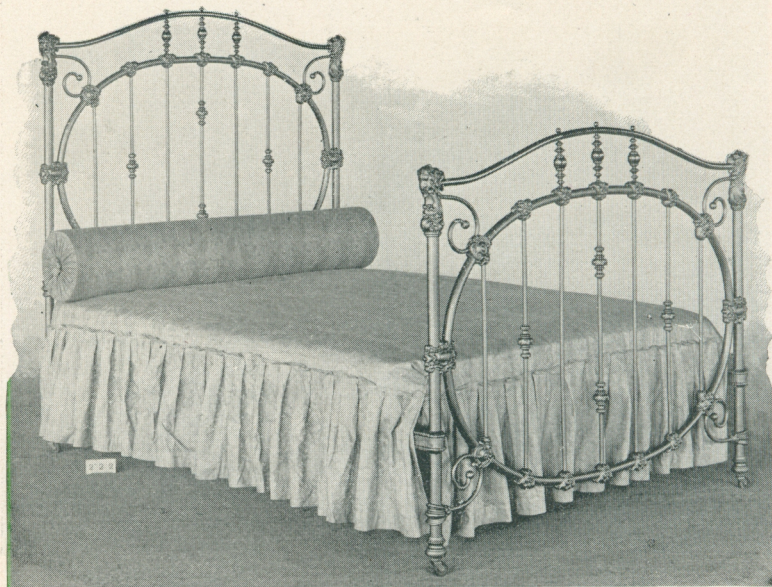
No. 92 Iron

The Adams & Westlake Company



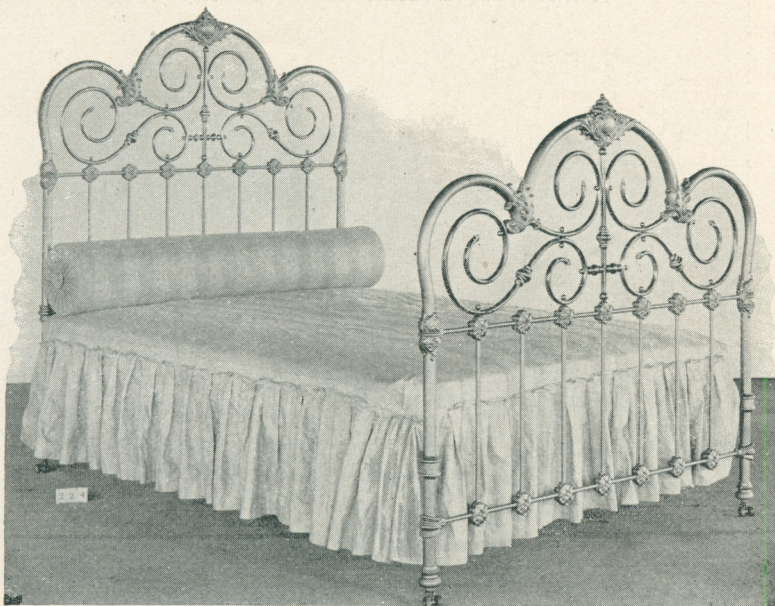
No. 211 Iron

The Adams & Westlake Company



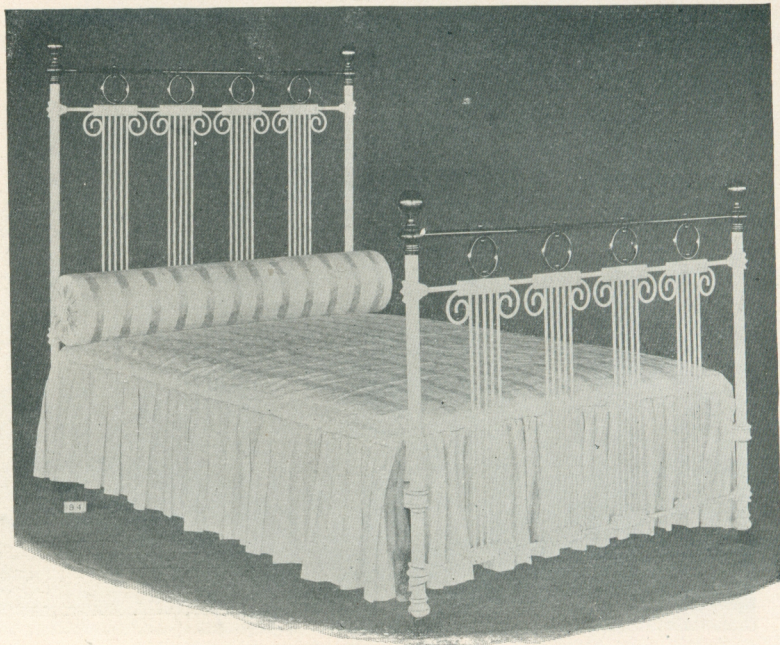
No. 222 Iron

The Adams & Westlake Company



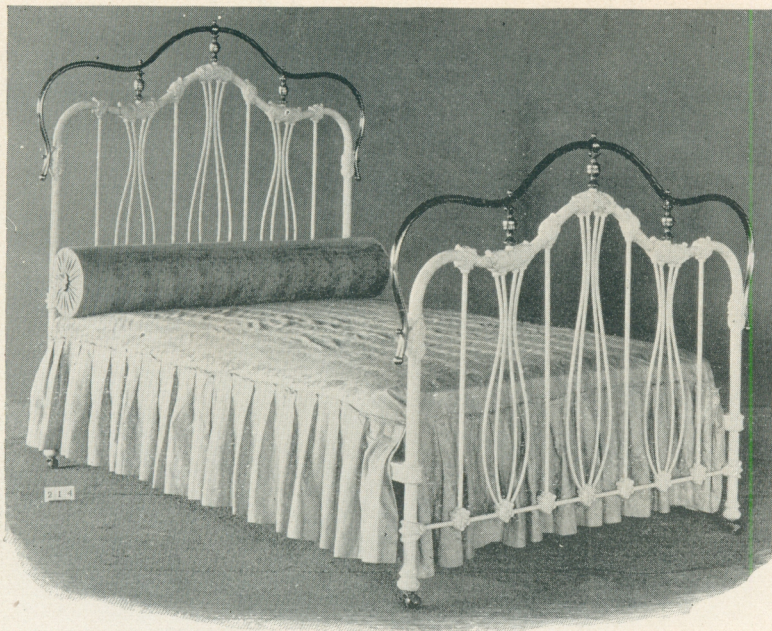
No. 224 Iron

The Adams & Westlake Company



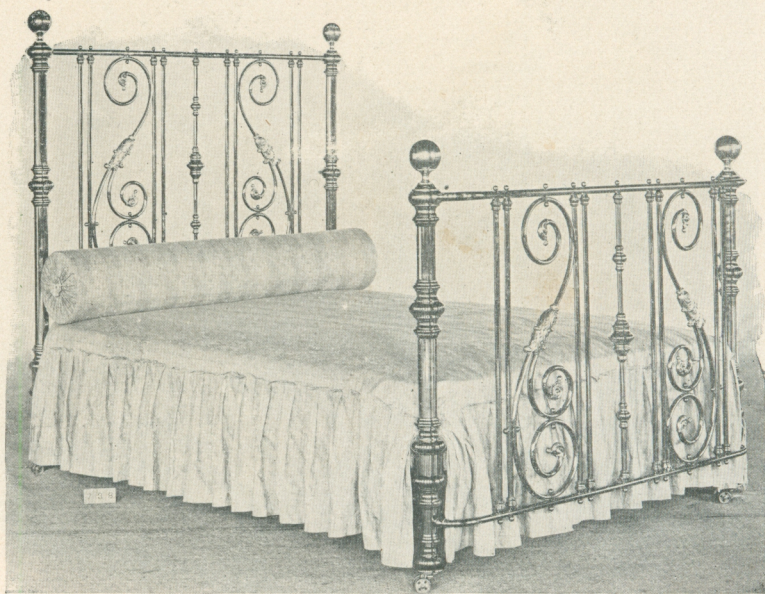
No. 94 Iron

The Adams & Westlake Company



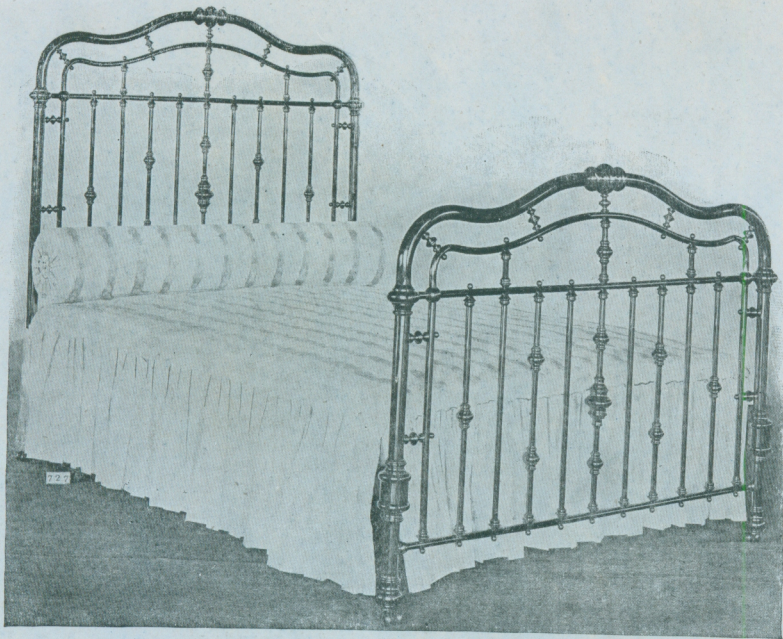
No. 214 Iron

The Adams & Westlake Company



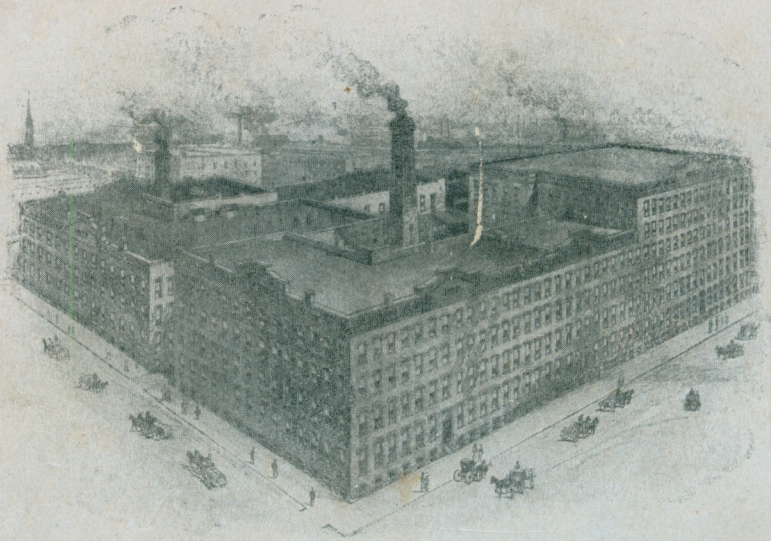
No. 738 Brass

The Adams & Westlake Company



No. 727 Brass

The Adams & Westlake Company



The Adams & Westlake Company.
Chicago Factory.