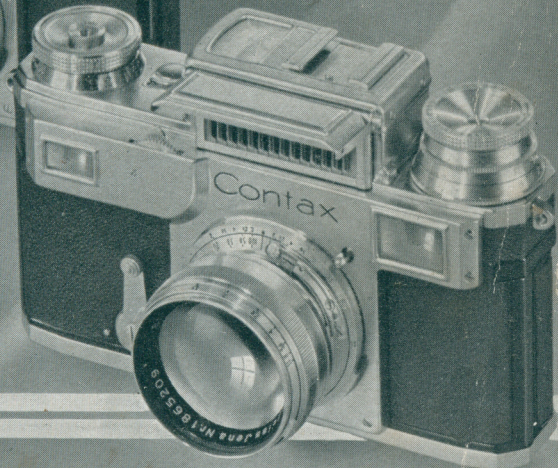
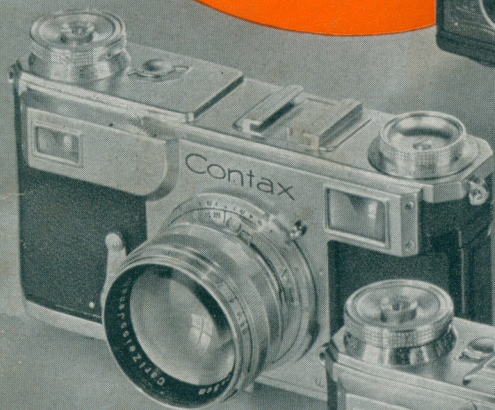




# Contax

WITH  
ZEISS  
LENSES





## CONTAX—*The most modern of Cameras*

**T**HE CONTAX represents the highest development of the 35 mm. camera. Its remarkable versatility, its ease of operation, and its extreme accuracy are the result of advanced constructional features developed by Zeiss Ikon, Europe's largest and leading camera concern.

Moreover, the owner of a CONTAX has the choice of 15 interchangeable Carl Zeiss Lenses, renowned for their optical perfection, plus numerous accessories covering every conceivable photographic requirement.

With its load of thirty-six exposures on one roll, you can snap one shot after another in quick succession. Ready at an instant's notice, you catch your subjects unposed—true-to-life candid shots full of character and human interest . . . children at play, friends in interesting attitudes, banquet scenes, stage pictures, etc. And at sporting events your CONTAX will stop the fastest action, getting all the detail and tone value that make a picture pulse with life. If you are a nature fan, you will find your CONTAX invaluable in taking telephoto shots of birds and wild animals, or close-up studies of insects, flowers, etc. Or if your interest lies along scientific lines, your same CONTAX can readily be adapted to the making of copies from books, charts, prints, etc., or photomicro pictures of every description.

In short, when you own a CONTAX, you have a camera that lets you branch out into any field of photography at any time—a splendid picture making instrument that grows with you as well as “on you.”

### *The Complete Miniature Camera*

The outstanding features combined in the CONTAX show it to be the most complete as well as the most highly developed camera built.

*Fifteen famous Zeiss Lenses* are especially designed for the CONTAX to insure sharpest definition over the entire negative.

The lenses are interchangeable by bayonet mounting—giving rapid change yet extremely accurate seating of the lens under all conditions.

Minutely accurate focusing is assured by a mechanism of extraordinary precision—the *Zeiss Ikon swivel type range-finder mechanically coupled to the lens*.

*Its metal focal-plane shutter* is impervious to all climatic conditions and operates with a degree of accuracy hitherto not obtainable with focal-plane shutters.

*Its detachable camera back* is advantageous not only during loading, unloading, and cleaning, but also makes it possible to use a special plate back adapter when single exposures on plates or cut films are required.

*No rewinding of the film* after fully exposing is necessary; the film is placed in the camera like an ordinary roll-film. However a rewinding device is provided for the use of film cartridges or one magazine.

*Automatic Film Counter* indicates number of exposures taken.

*Automatic Film Feed*—Winding the shutter automatically transports film after each exposure (prevents accidental double-exposures.) However, when desired, any number of exposures may be made on the same negative.

## CONTAX II AND III

The present CONTAX models II and III are a development of the earlier model CONTAX I, and offer many excellent improvements.

The range-finder and a larger view-finder are combined in one opening, giving speedier manipulation. The winding



©1935 Conde Nast Pub. Inc. Reprinted from *Vogue*

Photo Toni Frissell

*Taken with CONTAX, Sonnar F/1.5, 5 cm. at F/5.6; 100th sec.*

knob is situated on top of the camera with the shutter release conveniently located in the center of the knob. The top speed has been increased from 1/1000th to 1/1250th of a second.

The whole scale of shutter speeds is always visible. Adjustments can be made both before and after winding the shutter. A self-timing device permits delayed action release for taking your own picture; the release takes place automatically after a delay of approximately 10 seconds. The same mechanism also permits an automatic exposure of approximately one second.

CONTAX III has a built-in photoelectric exposure meter. In all other respects this model is identical with CONTAX II.

## CONSTRUCTION OF CONTAX

The body of the CONTAX is die-cast from light alloy, covered with black morocco leather. Exposed metal parts are chromium plated for durability and appearance. All sensitive mechanism, such as the range-finder and the lens focusing, are completely encased in the strong metal housing.

Although compact, the CONTAX is large enough and has sufficient weight to hold it steady in the hands during slow exposures. Too light or too small a camera is difficult to hold satisfactorily, and leads to lower efficiency in practical work. Its rectangular shape helps the operator to keep the CONTAX level and to avoid a tilted position.

Dimensions and weight are as follows:

CONTAX II (without lens)

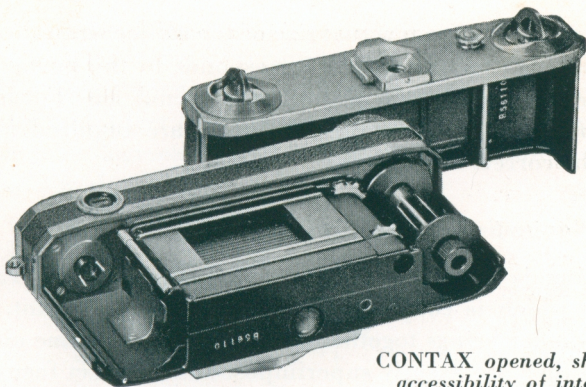
$5\frac{1}{2}'' \times 2\frac{3}{4}'' \times 1\frac{3}{8}''$ ; 20 $\frac{1}{2}$  oz.

CONTAX III (without lens)

$5\frac{1}{2}'' \times 3'' \times 1\frac{3}{8}''$ ; 25 oz.



*Natural and easy two-finger control.*



*CONTAX opened, showing  
accessibility of interior*

### *Accessibility*

All cameras, especially those using roll or motion picture film, must be kept thoroughly clean. Dust or small particles of film or perforation chips accumulate and may cause trouble. The surface around the picture aperture and the sliding track of the film require special attention. The interior of the CONTAX is easily and completely accessible. Simply remove the back, and the camera is open for easy and thorough cleaning. This removable back has many other advantages. First, it renders the insertion of daylight loading spools as easy as in any roll film camera, and further, it permits the use of a ground glass screen, plate back, and other accessories. This detachable back is made of a specially rigid metal. When fitted in place, the camera is absolutely light-tight, and the spring pressure plate insures that the film will be kept flat in the picture aperture at all times.

### *View-finder*

The view-finder is of the optical type, and consists of an inverted Galilean telescope giving an unreversed image in

slight reduction from actual size of the subject seen through it. The angle of the finder corresponds to the normal 45-degree angle of the field of the 2 inch (5 cm.) lens. For lenses of other focal lengths, special finders are required which give the correct angle.

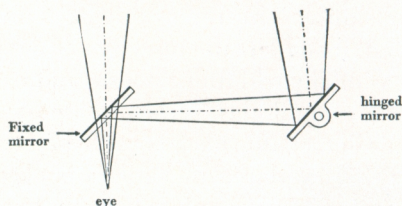
### *The Range-finder and Focusing*

Focusing is automatically done by adjusting the range-finder which is coupled to the lens focusing mount. The range-finder brings together two images of the same object. When they are exactly superimposed the correct focus has been obtained.

The accuracy of an optical range-finder depends to a great extent upon the length of its base. The CONTAX is equipped with a range-finder of approximately the full length of the camera itself—about 4 inches. This gives it a high degree of accuracy for all CONTAX lenses and for all distances.

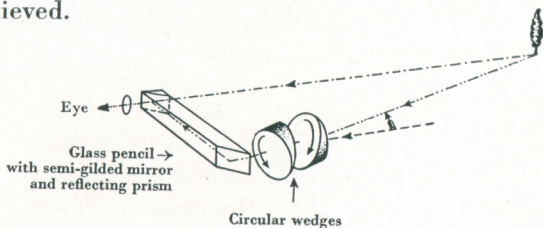
The swivel type of range-finder now used in CONTAX II and III is the result of years of research and improvement.

Formerly, the hinged or pivoted mirror principle was used.

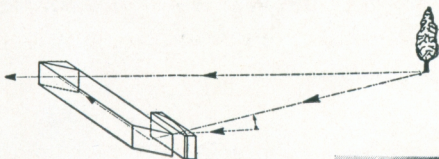


The movable mirror in this system moves only  $3^\circ$  to indicate distances between three feet and infinity, whereas the focusing mount rotates  $140^\circ$ . It can thus be appreciated that a very small error in the mirror will involve quite a considerable error in the focusing.

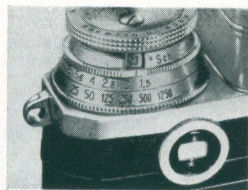
A considerable advance on this construction was reached in the rotating wedge range-finder, shown in diagram below. In this range-finder, a range of focusing distances between infinity and 3 feet involves a revolution of the two wedges through 90 degrees, so that a remarkable gain in accuracy was achieved.



In the *CONTAX II* and *III*, however, a still further step in the development of the range-finder has been taken. The range-finder works on a new principle, the “sliding” or “swivel” method. Two lenses of cylindrical surfaces are employed and the back lens slides in the curve of the front lens. The field of view has been made to agree with that of the



camera lens and a combined range-finder and view-finder thus results. Such a combination is clearly very helpful, since there is only one eye-piece to be looked through for both view-finding and focusing.



*Range and view-finder combined in one eye-piece*

Another important point regarding the Zeiss Ikon range-finder must also be mentioned—that of the semi-gilded mirror.

To facilitate the accurate superimposing of the two images

in the range-finder, each image appears in a different color. The direct image seen through the semi-gilded surface is green in shade, while the reflected image from the other end of the finder has a reddish tint. The two images are thus easily distinguished, while the fact that they are in complementary colors produces an image of approximately natural colors when perfect focus is obtained.

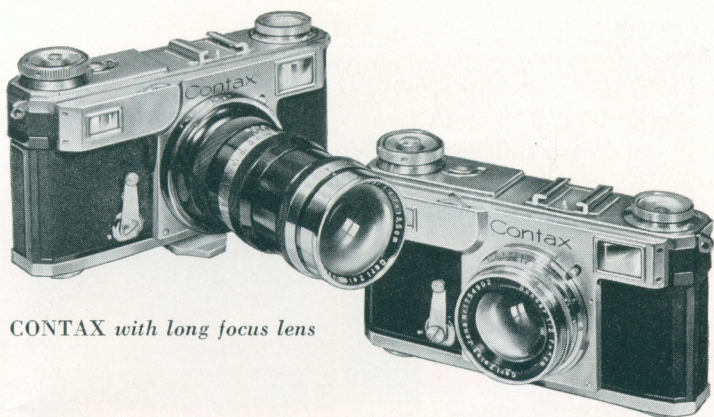
In designing the focusing mechanism, two important points had to be taken into consideration. First, the highest possible accuracy of mechanical parts; second, to make them immune to external influences which might destroy the exact relation between lens and measuring device. The mechanism is, therefore, designed to insure utmost accuracy. It is made substantial and rigid, is housed within the camera so that all mechanical parts are protected.



*Gooney Dance*

*H. C. Leuteritz*

*Taken with CONTAX and Tessar F/3.5, 5 cm. lens  
at F/5.6, 1/125th sec.*



CONTAX with long focus lens

CONTAX with Sonnar F/2, 5 cm.

### ***Interchangeability of Lenses***

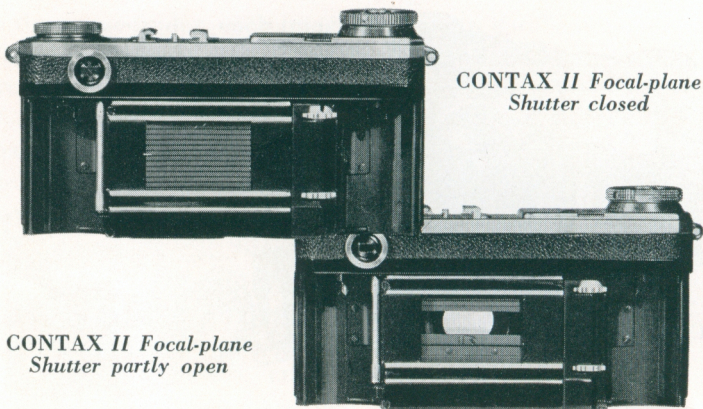
Fifteen Zeiss Lenses of various focal lengths and apertures, meeting the most exacting photographic requirements are available. Most of them are coupled with the range-finder. And all are conveniently and quickly interchanged by means of a bayonet mount.

This method of attaching lenses in a camera has long been used in professional cinematography and its advantages are speed and simplicity in changing lenses, freedom from wear, and accurate seating of the lenses. The only necessary operation when attaching lenses is to align 3 red dots.

The mounts of the lenses are arranged so that accessories such as filters, supplementary lenses, and sunshades can either be slipped on or screwed in. Details regarding the uses and characteristics of the various lenses are given on pages 16 to 24.

### ***The CONTAX All-metal Focal-plane Shutter***

The long and highly specialized experience of Zeiss Ikon



CONTAX II *Focal-plane*  
*Shutter closed*

CONTAX II *Focal-plane*  
*Shutter partly open*

with the difficult problem of design and construction of focal-plane shutters has resulted in the all-metal focal-plane shutter which is used in the CONTAX, and which embodies their knowledge, tradition, and standards.

The shutter consists of two metal blinds set with extreme accuracy. The material is a light metal of unlimited durability and greater resistance to changes in temperature and climate, as well as to mechanical wear and tear, than a focal-plane shutter made of any other material.

It is coupled with the film mechanism so that the winding of the shutter automatically transports the film. This prevents accidental double exposures. However, when desired, any number of consecutive exposures may be made on the same negative.

The shutter winding knob is placed on top of the camera with the shutter release button in the center. The middle finger of the right-hand focuses the lens, while the forefinger rests on the shutter release, ready to press it the moment the focus is correct.

The speeds provided are  $1/2$ ,  $1/5$ ,  $1/10$ ,  $1/25$ ,  $1/50$ ,  $1/125$ ,

1/250, 1/500, 1/1250 of a second in addition to Bulb (Time). A delayed action release which automatically releases the shutter after ten seconds is also provided; when set on B (Bulb), this also permits an exposure of approximately one second.

### *Film Loading*

In the CONTAX you use standard perforated 35 mm. motion picture film in lengths of approximately sixty-three inches. Each film spool gives thirty-six pictures of 24 x 36 mm., approximately 1 x 1½ inches. The automatic exposure counter shows the number of exposures made.

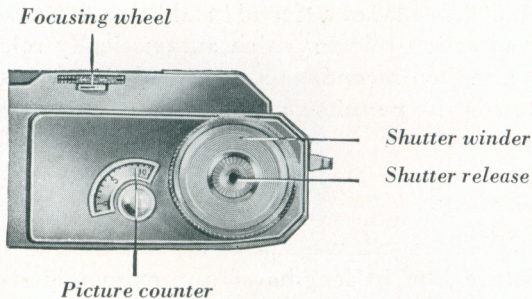
Double exposures (except where deliberately intended) are completely eliminated by the automatic film transport which, when winding the shutter, automatically transports the film necessary for the next exposure.

We recommend the use of CONTAX *daylight loading spools* with paper leader and paper trailer because they do not have to be rewound after the last exposure and can be inserted and removed from the camera in plain daylight in the same manner as you would load and unload any roll film camera. CONTAX daylight loading spools are supplied by the leading film manufacturers throughout the world.

When the photographer desires to use bulk film which is more economical and may be obtained in lengths of twenty-five to one hundred feet or to use shorter lengths of film, magazines are provided which may be loaded in the dark room with the requisite lengths of film. It is possible to use two magazines, winding the film from one magazine into the other, so that the film may



*Daylight loading spools*



be removed from the camera after any given number of exposures.

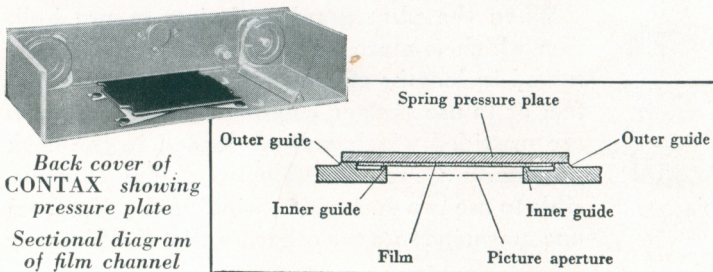
Both Kodachrome Color and Dufaycolor film may be used.

### ***Film Winding***

The film is automatically wound on to the next picture by the action of winding up the shutter, and the number of exposures is recorded by a built-in picture counter on top of the camera body.

### ***Picture Aperture and Film Guide***

To obtain a perfect negative, it is, of course, necessary that the film lie absolutely flat—as flat as a glass plate. In the CONTAX the film passes through an extremely shallow channel with a spring pressure plate on the reverse side of the film. It is held absolutely flat and in the focal-plane, which insures the sharpest negative possible.



*Back cover of  
CONTAX showing  
pressure plate  
Sectional diagram  
of film channel*

*Taken with CONTAX  
Sonnar F/2, 5 cm.  
at F/11, 1/100th  
sec.*

*H. Goffin*



*Taken with CONTAX  
Sonnar F/4, 13.5 cm.  
at F/16, 1/100th  
sec.*

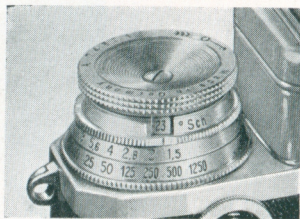
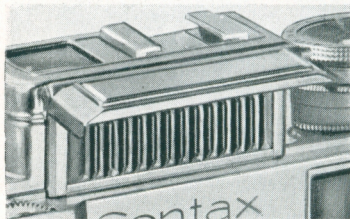
*F. Bergemann*



*Taken with CONTAX  
Sonnar F/1.5, 5 cm.  
at F/1.5, 1/50th  
sec.*

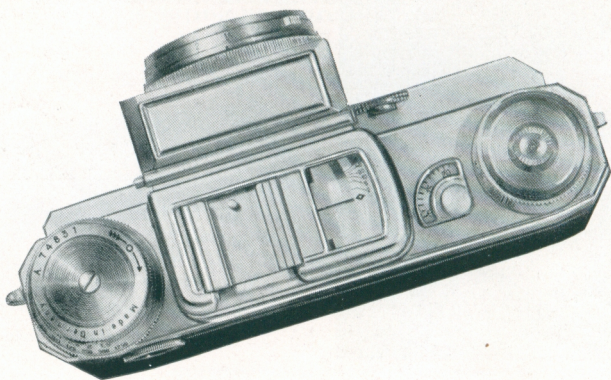
*Dr. Julius Freston*

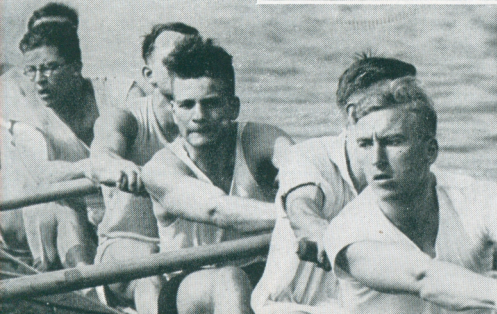
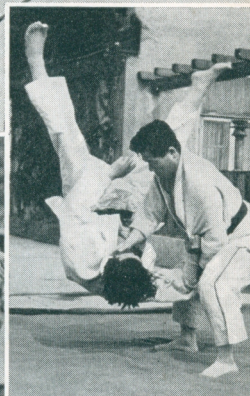
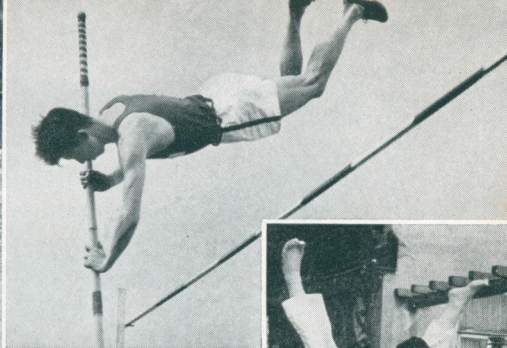
## CONTAX III EXPOSURE METER



*CONTAX III is the same as CONTAX II, but has a built-in photoelectric exposure meter*

When the camera is loaded, the meter is set for the film speed by turning the center milled knob until the Scheiner Rating appears in the opening directly above the index mark. In operation, a touch of the finger releases the self-raising protective cover over the photoelectric cell, a turn of the lower milled knob brings the indicator needle to the diamond mark, then the shutter speed for any diaphragm setting, or the diaphragm setting for any shutter speed, is read directly from the scales engraved between the lower and center milled edge. Upper or third milled knob controls film rewind, although this operation is not necessary with the CONTAX.





THE FIFTEEN  
INTERCHANGEABLE

Z E I S S  
L E N S E S  
F O R C O N T A X



**T**HE splendid results obtained with the CONTAX are due in a large measure to its unrivalled lenses, made by Carl Zeiss, Jena, and famous

throughout the world for their remarkable optical qualities.

These lenses were designed especially for the CONTAX. For example, the Zeiss Tessars are not the same as those used on larger cameras. Completely new calculations and computations had to be made and the most critical corrections assured. And to meet the exacting problems of largest aperture and short focal length, entirely new lenses, such as the remarkably fast and compact Sonnars, have been created.

All 5 cm. CONTAX lenses have no more than six glass-to-air surfaces. This cuts down reflection loss and assures freedom from reflection effects within the lens.

An outstanding feature of the CONTAX lenses is the bayonet mount. This method of attaching lenses avoids wear, insures accurate seating, and permits the lenses to be interchanged in rapid succession with ease and certainty.

## CONTAX LENSES

Altogether 15 interchangeable lenses are available, covering every photographic requirement. All of these lenses are suitable for use in color photography (using Kodachrome or Dufaycolor film).

| Lens                                     | Full aperture | Focal length                  | Magnification or reduction compared with 2" lens | Angle of field (Diagonal) | Diameter of mount for slip on filters, etc. mm. | Diameter of mount for screw in filters, etc. mm. |
|--|---------------|-------------------------------|--|---------------------------|---|--|
| Tessar <sup>1</sup> .....                | f/8           | 2.8 cm. (1 $\frac{1}{8}$ " )  | 0.54   | 75°                       | 42  | 40.5   |
| Orthometar.....                          | f/4.5         | 3.5 cm. (1 $\frac{3}{8}$ " )  | 0.67   | 62.5°                     | 42  | 40.5   |
| Biogon.....                              | f/2.8         | 3.5 cm. (1 $\frac{3}{8}$ " )  | 0.67   | 62.5°                     | 42  | 40.5   |
| Biotar.....                              | f/2           | 4 cm. (1 $\frac{5}{16}$ " )   | 0.77   | 55°                       | 42  | 40.5   |
| Tessar.....                              | f/3.5         | 5 cm. (2" )                   | 1  | 45°                       | 27 & 42   | 25.5   |
| Tessar.....                              | f/2.8         | 5 cm. (2" )                   | 1  | 45°                       | 27 & 42   | 25.5   |
| Sonnar.....<br>(collapsible mount)       | f/2           | 5 cm. (2" )                   | 1  | 45°                       | 42  | 40.5   |
| Sonnar.....                              | f/1.5         | 5 cm. (2" )                   | 1  | 45°                       | 42  | 40.5   |
| Triotar.....                             | f/4           | 8.5 cm. (3 $\frac{3}{8}$ " )  | 1.6  | 28°                       | 42  | 40.5   |
| Sonnar.....                              | f/2           | 8.5 cm. (3 $\frac{3}{8}$ " )  | 1.6  | 28°                       | 51  | 49.5   |
| Sonnar.....                              | f/4           | 13.5 cm. (5 $\frac{1}{4}$ " ) | 2.6  | 18.4°                     | 42  | 40.5   |
| Tele-Tessar K.....                       | f/6.3         | 18 cm. (7" )                  | 3.5  | 13.6°                     | 42  | 40.5   |
| Sonnar <sup>2</sup> .....                | f/2.8         | 18 cm. (7" )                  | 3.5  | 13.6°                     | 80  | 77   |
| Zeiss Tele-Tessar <sup>2</sup> )         | f/8           | 30 cm. (12" )                 | 5.8  | 8.2°                      | .....   | 46   |
| Zeiss Tele-Objective <sup>2</sup> )..... | f/8           | 50 cm. (20" )                 | 9.6  | 5°                        | .....   | 70   |

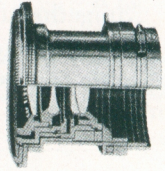
<sup>1</sup> Not coupled to the distance meter.

<sup>2</sup> These three lenses are not placed in the camera, but the camera is attached to the lens instead. The distance meter naturally cannot be coupled to so large a lens. Focusing is done by the Flektoscope (mirror-reflex) which is furnished with the lens. The 30 and 50 cm. lenses are delivered complete with light yellow filter and a screw in lens hood.

## UNIVERSAL LENSES

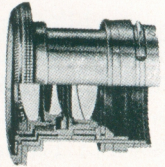
### *Zeiss Tessar F/3.5 5 cm. (2 in.)*

For all-around use and for subjects which occur in every-day photography, such as landscapes, sports, portraits, street scenes, etc., first consideration should be given to the Tessar F/3.5, 5 cm. (2 in.) This lens seldom needs to be stopped down and may also be used to great advantage as an enlarging lens. Made in a collapsible mount.



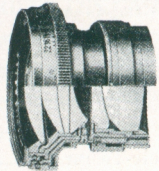
### *Zeiss Tessar F/2.8 5 cm. (2 in.)*

This Tessar is similar to the preceding Tessar F/3.5, 5 cm. (2 in.) in its excellent optical quality at the same aperture. At full aperture it transmits 50% more light than the former. The larger aperture adds to its scope and makes it a truly universal objective. This lens is particularly suitable for color photography. Made in collapsible mount.



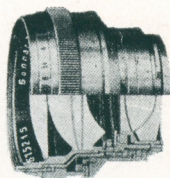
### *Zeiss Sonnar F/2 5 cm. (2 in.)*

The Sonnar type of lens is the most recent development in lens construction. Its outstanding feature, in addition to its large aperture and superior optical quality, is its compactness. The entirely new design of the Sonnar lenses has helped to overcome the disadvantages which hitherto attended the manufacture of lenses of extreme aperture. The six components are so combined that pictures of excellent brilliance, sharp to the very edges, are assured. The optical correction of this lens is such that although of large aperture it may be stopped down to small apertures and may, therefore, be termed the universal miniature lens of normal focal length. Furnished in collapsible mount.



***Zeiss Sonnar F/1.5 5 cm. (2 in.)***

The Sonnar F/1.5, 5 cm (2 in.) has the largest f aperture of any CONTAX lenses. This extreme speed has not been obtained at a sacrifice of quality; in fact, the high optical perfection of the Sonnar F/2 is also found in this lens.



The Sonnar F/1.5, 5 cm. (2 in.) has opened an entirely new field of photography—candid photography under all possible light conditions. This is the lens recommended for indoor use where short exposures are necessary. A flat field and critical definition to the margins are assured. For optical reasons, the Sonnar F/1.5, 5 cm. (2 in.) cannot be stopped down below F/11. Available in rigid mount only.



*"6:15"*

*Werner Stoy*

*Taken with CONTAX Sonnar F/2, 5 cm. at F/2, 1/25th sec.*

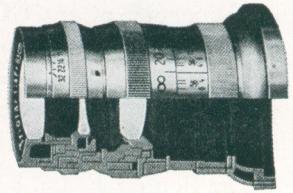
## TELEPHOTO LENSES

### *Zeiss Triotar F/4 8.5 cm. (3 $\frac{3}{8}$ in.)*

This lens is very suitable for portraiture, in which a greater focal length has always been preferred.

The Triotar F/4, 8.5 cm. (3 $\frac{3}{8}$  in.) will give a very pleasing perspective in portraiture and it may also be used as a medium telephoto lens for landscape work.

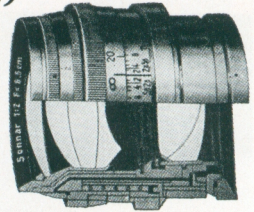
The full aperture of this lens is large enough for instantaneous work. It is of special value in taking pictures of children, animals or landscapes from more than ordinary distances. Its light weight is an additional advantage.



### *Zeiss Sonnar F/2 8.5 cm. (3 $\frac{3}{8}$ in.)*

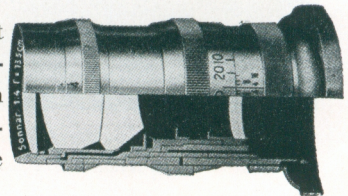
This lens combines a very large aperture with a focal length that makes it possible to take close-ups from a distance. It is extremely useful under unfavorable lighting conditions, and in press, stage and portrait photography where a larger size image is desired.

Negatives obtained with this lens have extraordinary brilliance. It should be the first choice of the photographer who wants to use one lens of longer focal length with the maximum of speed.



### *Zeiss Sonnar F/4 13.5 cm. (5 $\frac{1}{4}$ in.)*

This objective is one of the most useful telephoto lenses for all-around purposes. Compared with the 5 cm. lenses, it renders objects nearly three times the size





2.8 cm.



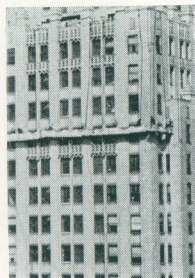
4 cm.



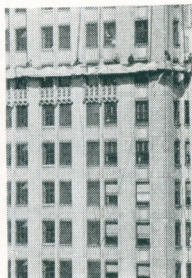
5 cm.



8.5 cm.



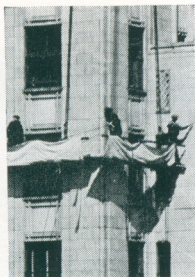
13.5 cm.



18 cm.



30 cm.



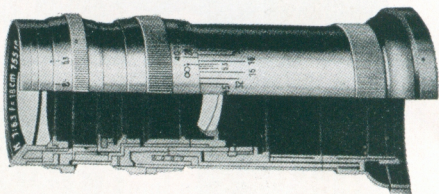
50 cm.

*Photographs of same object taken with lenses of different focal lengths*

at the same distance. With this lens one can take snapshots from distant points without being observed and it is, therefore, ideal for taking news pictures, studies of wild animals, etc. It is also useful in photographing landscapes and architectural detail.

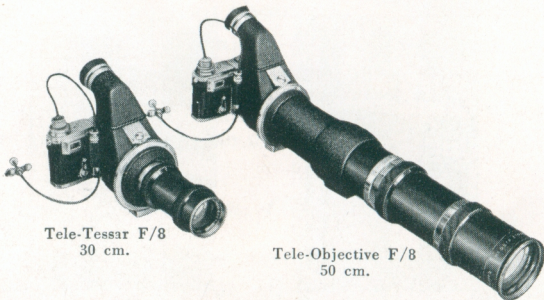
***Zeiss Tele-Tessar-K F/6.3 18 cm. (7 in.)***

With this lens of long focal length, long-distance work is greatly facilitated. In spite of the comparatively small angle covered, the lens is to be recommended for landscape work.



The magnification which this lens provides, requires that it be used with a firm support or tripod stand. The lens is coupled to the distance meter in the usual way.

***Zeiss Tele-Tessar F/8 30 cm. (12 in.)  
and Tele-Objective F/8 50 cm. (20 in.)***



Tele-Tessar F/8  
30 cm.

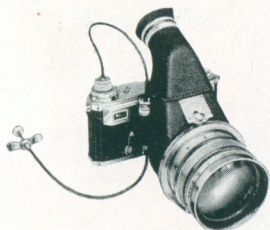
Tele-Objective F/8  
50 cm.

Intended for extreme telephoto work, these lenses are used on a tripod, the camera being attached to them by means of the bayonet lock. The CONTAX optical range-finder is

not coupled, focusing being accomplished through the Flektoscope (a mirror-reflex device) that shows the image and field of view on a fine-grain ground glass screen, 5x magnified.

These extremely long focal length lenses are ideal for the scientific photographer who wishes to take wild animals or other subjects at a distance of 100 yards or more.

### *Zeiss Sonnar F/2.8 18 cm (7 in.)*



This is a telephoto lens of very large aperture. It is the press and sports photographer's lens, and will produce a correctly exposed negative of fast moving objects even under difficult light conditions. Focusing is by means of the Flektoscope described above. Special supports in the form of a rifle stock, or a Contax Harness, are available, or a tripod may be used.



CONTAX Harness

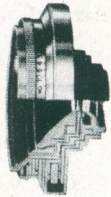


The CONTAX "Olympic Gun"

## WIDE-ANGLE LENSES

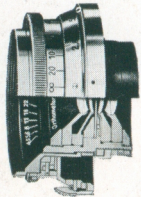
### *Zeiss Tessar F/8 2.8 cm. (1 $\frac{1}{8}$ in.)*

This is an extremely wide-angle lens, covering seventy-five degrees. It is the shortest focal length available for the CONTAX. This lens is particularly useful in photographing architectural subjects in narrow streets, confined interiors, etc.



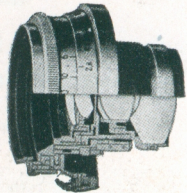
### *Zeiss Orthometar F/4.5 3.5 cm. (1 $\frac{3}{8}$ in.)*

This is a fairly large aperture wide-angle lens, covering 62.5°. The flatness of its field results in negatives of outstandingly sharp definition to the very edges. A highly corrected lens of moderate price.



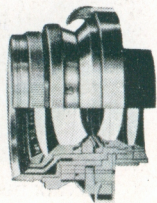
### *Zeiss Biogon F/2.8 3.5 cm. (1 $\frac{3}{8}$ in.)*

This lens is an entirely new type of objective which combines great rapidity with a wide angle of view (62.5°). In fact, it is the fastest wide-angle lens available for any 35 mm. camera. Similar in construction to the famous Sonnar, its definition and evenness of illumination are excellent even at full aperture.



### *Zeiss Biotar F/2 4 cm. (1 $\frac{9}{16}$ in.)*

This lens covers an angle of fifty-five degrees. It is a wide-angle lens of considerable speed. In spite of its extremely wide aperture and angle of field, the definition is excellent over the entire negative.





*Taken with CONTAX  
Sonnar F/2, 5 cm.  
at F/8, 1/100th sec.*

*Irving Smith*

*Taken with CONTAX  
Sonnar F/2, 5 cm.  
at F/8, 4 sec.*

*M. Grebert*



*Taken with CONTAX  
Sonnar F/2, 5 cm.  
at F/3.5 1/500th sec.*

*T. Bouac*

## VIEW-FINDERS

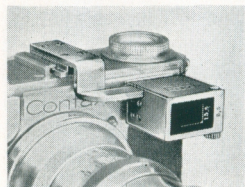
View-finders for special purposes are provided for the CONTAX, all of them fitting into the special "shoe" on top of the camera.

### *Albada View-finders*



This new type of view-finder shows the image unreversed and as seen normally; both eyes may be used. It includes a large field with the picture framed in white lines. It is especially suited for taking fast moving objects. Three models: one for 5 cm. lenses; one for 5 and 8.5 cm. lenses, and one for 5 and 13.5 cm. lenses.

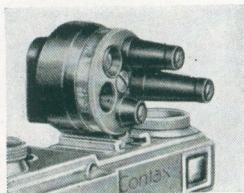
### *Finder Mask*



This mask makes it possible to accurately use the combined range- and view-finders of the CONTAX with the 8.5 and 13.5 cm. lenses. Its full field is that of the 8.5 cm. lens; a flick of the finger brings the 13.5 cm. mask into position.

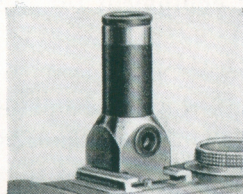
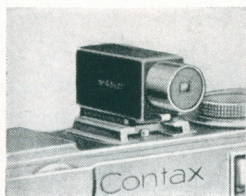
### *Universal Revolving View-finder*

This is a precision optical instrument. It covers the focal lengths of 2.8 (or 3.5), 5, 8.5, 13.5 and 18 cm.; or 2.8, 3.5, 5, 8.5 and 13.5 cm. The image is shown right side up and unreversed, with parallax adjustment provided for from close-up to infinity. A valuable and efficient accessory for the photographer owning a variety of lenses.



### *Multiple View-finder*

The Multiple Finder is a telescopic finder for the focal lengths of 5, 8.5, 13.5 and 18 cm. The field is shown right side up, both for infinity and close-up.

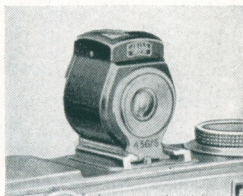


### *Vertical Telescopic View-finder*

The Vertical Telescopic Finder is a small finder of great brilliance, which shows an unreversed image for 5 cm. lenses. It is particularly useful when taking pictures of children, as it enables the photographer to hold the camera at a lower level. It may also be used at right angles to the direction in which the camera is held.

### *Brilliant Prism View-finder*

The Brilliant Prism View-finder is used at low level and at right-angles. It is held at a distance from the eye for viewing.



### *Wide-angle View-finders*

Wide-angle view-finders showing the correct field for either the 2.8, 3.5 or the 4 cm. lenses are available, as well as

### *Special Tele View-finders*

for the 18, 30, and 50 cm. lenses, the finders for the last two lenses being fitted with an extremely accurate parallax adjustment.



## CONTAX ACCESSORIES

The CONTAX camera is a foundation upon which an entire system of photography can be built up.

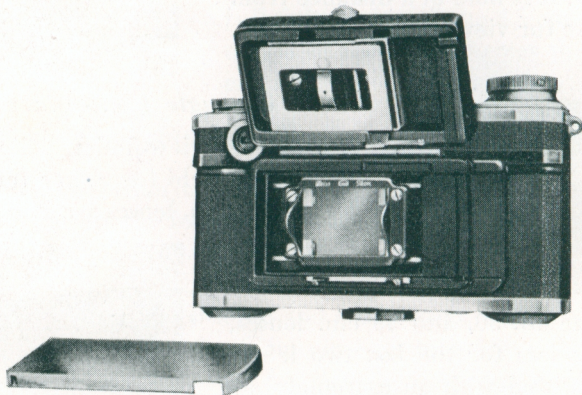
Accessories are available for enlarging, for reproduction work of every description, for photomicrography, and close-up work.

A complete listing of the accessory equipment for the CONTAX follows:

### *Contax Plate Back*

The construction of the CONTAX permits the use of a plate back. The plate back is interchangeable with the standard removable back of the camera and is so constructed that both plates and cut film of 3 x 4.5 cm. ( $1\frac{1}{8}$  x  $1\frac{3}{4}$  in.) may be used. Focusing is done on an insert ground glass.

This plate back is especially useful in scientific and research photography where it is desired to see the composition of the image and check up on its definition before taking the actual picture. A large variety of sensitized material is available, and any standard 9 x 12 cm. or  $6\frac{1}{2}$  x 9 cm. plate or cut film may be conveniently cut to size.



*Plate back adapter, with ground glass in place*

## *Focusing Adapter*

This is a simple device consisting of a metal tube carrying at one end a ground glass screen, and at the other a bayonet mount in which the lens is placed. The distance of the mount to the ground glass is exactly the same as the distance from the lens mount to the film in the camera. In copying, therefore, in cases where focusing by scale does not appear sufficiently convenient, the focusing adapter can first be mounted on the reproduction stand and the focusing extremely accurately set. The camera is then placed on the stand and the lens fitted into its bayonet mount. The focus will then remain as accurate as it was originally set on the ground glass screen.



*Harvest*

*George Jaecks*

*Taken with CONTAX and Tessar F/3.5 5 cm. lens  
at F/6.3, 1/200th sec. (yellow filter)*

## Filters

Color filters for the CONTAX are made in both slip-on and screw-in type and can be used simultaneously with the supplementary lenses and with lens hoods. The Zeiss Ikon filters, as well as those made by Carl Zeiss Jena are made from optical glass colored in the mass and are extremely accurately ground to prevent distortion of the image.

| No.   | Color                          | Suitable for   | Approximate Filter Factor* |
|-------|--------------------------------|--|----------------------------|
| G 0   | Ultra-Violet absorption filter | Mountain photography.  | D 1.3<br>M 1.3             |
| G 1   | Light yellow                   | Sporting and instantanous work, portraits and landscapes with low sun.   | D 1.4<br>M 1.2             |
| G 2   | Medium Yellow                  | Landscapes and snowscapes.   | D 1.6<br>M 1.4             |
| G 3   | Dark Yellow                    | Landscapes with distance, snow scenes, against the light pictures, still life, paintings, and colored dresses.       | D 2<br>M 1.5               |
| G 4   | Orange                         | Distant landscapes without foreground, aerial photography, copying, and other work where contrast must be increased. | D 2.3<br>M 1.5             |
| GR 55 | Yellow Green                   | Landscapes without great distances, and snowscapes.  | D 2<br>M 1.5               |
| GR 50 | Green                          | Landscapes with distant objects, snow scenes, against the light pictures, still life, and copying paintings.         | D 3<br>M 2.5               |
| B 40  | Blue                           | Exposures in artificial light.   | D 2<br>M 3                 |
| R 10  | Light Red                      | Long distance work and night effects.  | D 6<br>M 4                 |
| R 15  | Medium Red                     | Long distance work.  | D 25                       |
| R 20  | Dark Red                       | Infra-red exposure.  | D 25                       |
| R 30  | Black Red                      | Infra-red exposure.  | Infra-red<br>1000          |

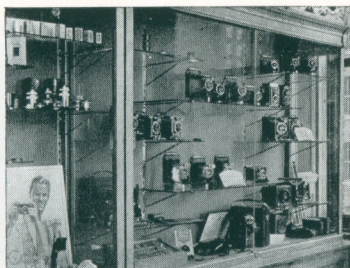
D means Daylight.

M means Mazda.

\* For Panchromatic Films.



*Without polarizing filter*



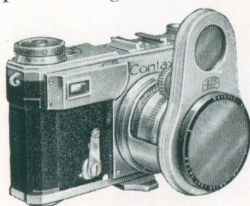
*With polarizing filter*

### ***Zeiss Polarizing Filter—Bernotar***

This filter is useful in removing or reducing reflections from glass, polished wood, water, paper, etc., and particularly pictures under glass or behind windows. Attached to the lens by a slip-on mount, after adjustment.

### ***Bernotar Orienter***

This attachment makes it possible to adjust the Bernotar polarizing filter and observe its effect after it is attached to the outside bayonet fitting of the lens. It consists of a 42 mm. Bernotar coupled to a polarizing viewing screen. Rotation of both viewing and taking filters is controlled in synchronism by a convenient knurled wheel.



### ***Sunshades***

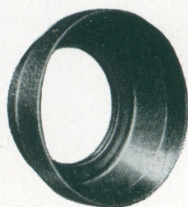
Sunshades keep side and top light away from the lens, particularly where exposures are made against the light. This increases brilliance and clarity of the negative.

*Slip-over Zeiss Sunshade* is available in the 42 or 51 mm. diameter. This sunshade can be used with the respective diameter filters, or supplementary lens fittings.

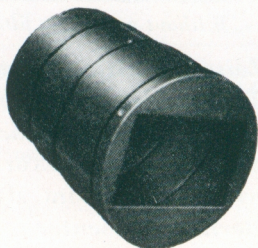
*Screw-in Type 40.5 mm. Sunshade* (Fig. I) can be used with screw-in type supplementary lens or filters of the same diameter.

This manner of fitting sunshade to the lens is very secure, and is to be recommended over the slip-on type.

*Fig. II: Collapsible Sunshade.* This sunshade is fitted on the camera in such a way that the setting of the lens is immaterial and it can thus be used with lenses of more than one focal length. For the Tessar Lenses of 2" (5 cm.) focal length, the sunshade is pulled out to its full length, while with the Sonnar of 5 cm. focal length, two of the three collapsible sections are extended. By using an adapter the collapsible sunshade can be used with F/4 lenses of longer focal length.

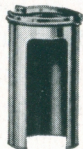


*Fig. I*



*Fig. II*

### *Zeiss Ikon Magazines*



*Inner Casing*



*Central Spool*

These magazines consist of a central spool, an inner casing, and an outer casing. Outside the camera, the two casings are closed and admit no light, but as soon as the camera back is locked in position the magazine automatically opens and allows the film to be drawn through the camera without resistance.

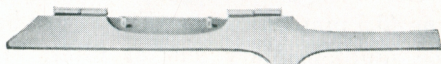
The central spool used in the magazine is somewhat smaller than the spool of the CONTAX daylight loading film, and the latter cannot be used in the magazine.



*Outer Casing*



*Dust Proof Container*



*Template for cutting ends of film*



## CARRYING CASES

1. *Universal Carrying Case.*
2. *Combination Case.*
3. *Eveready Case.*
4. *Pouch for CONTAX with collapsible lens.*
5. *Pouch for CONTAX with Sonnar F/1.5 lens.*
6. *Pouch for 5 cm. lenses.*
7. *Reinforced round case for 5 cm. lenses.*
8. *Reinforced round case for F/2 8.5 cm. lenses with sunshade and filter.*
9. *Reinforced round case for F/4 8.5 or F/4, 13.5 cm. lenses with sunshade and filter.*

### *Supplementary Close-working Attachments*

Proxar Supplementary Lenses for decreasing the focal length of the 5 cm. lenses permit close-up photography. They are used at given distances and permit one to focus as close as 12 inches.

The following Proxars are available for the CONTAX:

PROXARS for inner mount fitting only 5 cm. Tessar, 1 x 27, working distances from 3' 3 $\frac{3}{4}$ " to 1' 6 $\frac{1}{4}$ ". 2 x 27, working distances from 1' 8" to 1' 1 $\frac{1}{2}$ ".

PROXARS, fitting 5 cm. Sonnar, 1 x 42, working distances from 3' 2" to 1' 6 $\frac{1}{4}$ ". 2 x 42, working distances from 1' 8" to 1' 3 $\frac{1}{4}$ ".

Intermediate extension tubes are available (Fig. III, p. 40). With the 1x tube, life-size pictures may be obtained; with the 2x tube, twice actual size, and with the 4x tube, four times actual size. The lenses used in this instance would be the 5 cm. Tessars, or the Sonnar F/2, 5 cm.



### *Contameter*

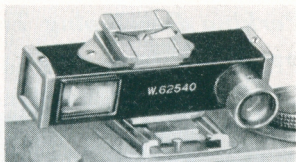
The Contameter provides the means for making instantaneous photographs of subjects very close to the camera without the use of a tripod or any elaborate set-up. Striking close-ups can be easily made with the camera

held in the hand—still insuring critical sharpness and complete certainty of including the desired part of the subject.

No troublesome measurements are necessary, for the Contameter is, in itself, a sort of distance meter. Accurate focus is obtained simply by moving the camera towards or away from the subject.

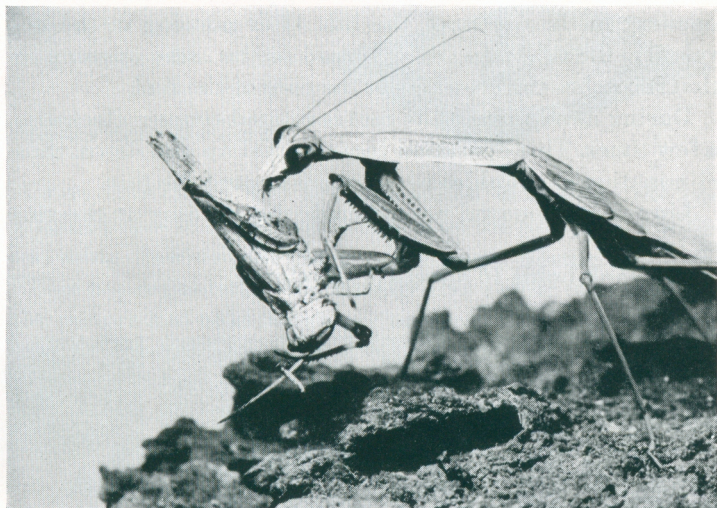
The Contameter works on exactly the same principle as the coupled range-finder, except that a special supplementary

lens is placed over the normal camera lens, and the device only gives sharp focus at the three distances of 20, 12, and 8 inches. (Distance between object and lens.) The three distances are set



on the distance meter by interchangeable prisms fitted in small cylindrical mounts. Before exposure, the camera is moved nearer to or farther from the subject until the images in the Contameter fuse. The instrument is specially corrected to obviate parallax error, the angle of view is thus determined by looking through its eyepiece.

With the normal 2" lens used alone, the nearest focusing distance is 35 inches, which gives a scale of reduction of 1:20 in the negative. The Contameter, at the distances of 20, 12, and 8 inches from the subject, gives scales of reduction of 1:10, 1:6.5, and 1:4 respectively.



*Mantis devouring grasshopper*

*Vernon E. Whitman*

*Taken with CONTAX and Contameter 20 cm. lens  
Sonnar F/2, 5 cm. at F/22 Photoflash*

## *Perkino Developing Tank*

PERKINO offers the ideal and most convenient means of developing standard and shorter length 35 mm. film.

Made entirely of Bakelite (NO METAL PARTS) the tank is absolutely acid-proof.

Its construction permits easy and thorough cleaning.

**NO APRON REQUIRED.** It is no longer necessary to reach to the core of the reel to fasten film and apron.

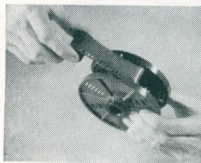
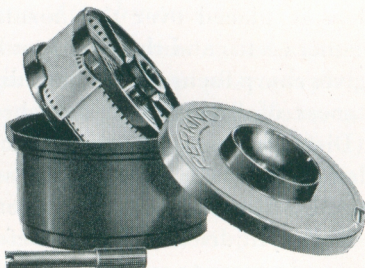
Film is inserted in dark room, or changing bag may be used. After being placed in tank all further operations may continue in ordinary light, or even in full daylight, as with lid on, the tank is perfectly light-tight.

Developing, hardening, fixing and washing are all performed in the tank, the liquids being poured in through the opening in the center of the lid. After pouring in the developer, the AGITATOR is placed in the same opening so that it catches the cross bar at the core of the reel.

During development the reel is rotated counter clockwise a few times. This operation jogs the reel up and down, thus eliminating air bubbles which form around the film.

Liquids are poured out through the opening at the rim of tank.

The tank holds 16 ounces of developer.



*Film is fed into outer opening of grooves*



*Liquid is poured in through opening in center of lid*

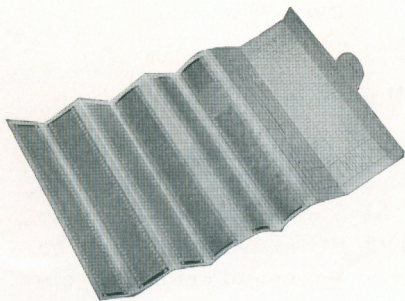


*Bubbles are eliminated by rotating agitator counter-clockwise*

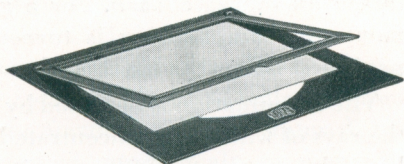


*Liquid is poured out through rim opening*

### *Film Wallet for Storing Negatives*



This wallet holds a complete roll of 36 pictures cut into strips of 6 pictures each. Film stored in this way is protected against damage. Since the pouch is transparent, it is not necessary to take the film out in order to examine it.



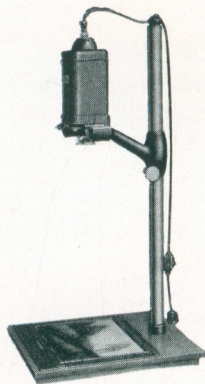
### *Metal Paper Holders*

A very convenient and simple method of holding the enlarging paper in the correct position on the easel board without using drawing-pins to secure the paper during exposure. These paper holders automatically give a clear cut border to the picture and hold the enlarging paper flat. When making several enlargements from one negative, the paper is conveniently placed in exactly the same position for each exposure and thus uniform results are achieved. These paper holders may be obtained in the following sizes:

|   |                                    |
|---|------------------------------------|
| $2\frac{1}{4}$ x $3\frac{1}{4}$ " ( 6.5 x 9 cm.)  | 5 x 7" (13 x 18 cm.)               |
| $3\frac{1}{4}$ x $4\frac{1}{4}$ " ( 8 x 10.5 cm.) | 7 x $9\frac{1}{2}$ " (18 x 24 cm.) |
| 4 x 6" (10 x 15 cm.)                              | $9\frac{1}{2}$ x 12" (24 x 30 cm.) |

### *Magniphot Enlarger*

This enlarger is specially designed for CONTAX negatives. The 5 cm. Tessars or Sonnar F/2 CONTAX lenses can be used—a separate enlarging objective does not have to be purchased. The Magniphot is a condenser type enlarger supplied complete including a nickel-plated column of 34" length,\* consisting of two parts which can be easily separated for greater convenience in carrying or packing. The maximum enlargement is 20 times when projecting the image on the baseboard. For a greater degree of enlargement, the lamphousing is turned around and the image projected below the baseboard onto the floor.



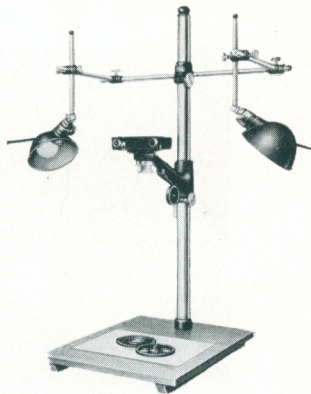
The illumination is obtained by an opal lamp of 75 Watts, the rays of which are concentrated by a large size condenser lens. This system yields a very suitable source of light, evenly distributed, thus assuring good brilliancy and enlargements having good gradations. The film is held flat by a glass pressure plate fitted to the movable condenser unit. This unit is actuated by a lever control for ease and quick manipulation to permit moving film negative from one frame to the next without removing the film from the enlarger.

For enlarging wet negatives a special pair of optical glass plates are available. These hold the negative in such a manner as to avoid formation of air bubbles or damage to the exposed (picture) section of the film.

\* The over-all height of the enlarger when extended to the top of the column is 50" from the top of the lamphouse to the bottom of the easel.

## *Large Copying Stand with Illuminating Apparatus*

This stand permits reductions of 1:2 to 1:18 with the Tessar and collapsible Sonnar Lenses. With the rigid mount Sonnar F/2 5 cm. it permits reductions up to 1:12. Baseboard measures 16 x 20 inches. The column is 36 inches high. When it is necessary to work with artificial light, a U-shaped bracket with two lamp holders and reflectors is clamped to the column of the instrument. These reflectors are adjustable in every direction, so that even if plate glass is used to hold the original in place, reflections can be avoided.



## *Reproduction Stand*

This device is intended for photographing objects in their natural size, or at a reduction (1:1½, 1:2, 1:3, 1:4).

The arm of the instrument, which normally holds the camera and lens, can (for focusing plastic objects) be used for holding the lens and the focusing screen adapter. With flat objects, focusing is obtained automatically by means of a catch device. The extra extension required when work is done at these short distances is supplied by a series of distance pieces with bayonet mounts on either side to attach to the camera and to hold the lens.

Metal masks are provided to indicate the camera field at the various degrees of reduction.

The instrument is so constructed that the subject being photographed is lighted from all sides and free from shadows.

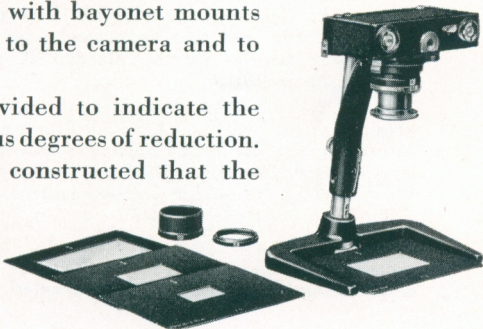




Fig. I



Fig. II

### UNIVERSAL MICRO-MACRO OUTFIT FOR CONTAX

This appliance covers a field of photography that the foregoing reproduction and close-working apparatus do not readily lend themselves to.

The CONTAX at its closest working distance (3 feet) reduces the image on the film to 1/20th of actual size. The Contameter near-focusing device permits a larger size image up to 1/4th of actual size. The Reproduction Stand allows a copy of actual size.

The use of a microscope is generally accepted as essential for photographing microscopic detail. The microscope setup usually permits a minimum magnification of approximately 20 times and from there continues on into higher magnifications. Heretofore the CONTAX user has not had equipment available which was adaptable for reproduction work between actual size and an image enlarged 20 times directly on the film.

The UNIVERSAL Micro-Macro outfit will produce directly on the CONTAX film magnifications up to 25 times. Such a negative enlarged to 4 x 6" would render an enlargement of 100 diameters without having used a microscope.

As the UNIVERSAL STAND must be adaptable for all types of supports, the U-shaped foot (see Fig. I) which consists of three easily assembled parts is so constructed as to



Fig. III

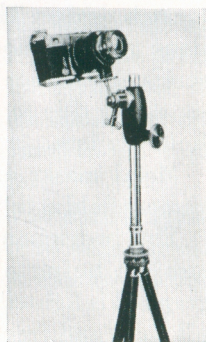


Fig. IV

be absolutely free of vibration and fitted with a long extension. The base has three openings for which spikes to fasten the stand into the ground or in crevices in rock formation are obtainable.

The UNIVERSAL STAND when used as a copying apparatus (see Fig. II) can be fastened with three screws to a baseboard with the illuminating arrangement. An intermediate focusing mount, constructed from Helical motion (Fig. V), accommodates the CONTAX lenses. The scale of reproduction with this set-up can be varied from 1:10 to 1:2. This unit is primarily adapted for the reproduction of books, pictures and medium size objects.

For pictures of objects in actual size or enlarged directly on the film, extension tubes (Fig. III) are required. These tubes come in three lengths—1", 3/4", 7"; when using these tubes an enlargement up to 4 times can be obtained directly on the film. The CONTAX lenses used in this instance are either the Tessars 5 cm. or the Sonnar F/2 5 cm. For lenses where the diaphragm stop must be regulated from the front of the lens, we supply a removable auxiliary diaphragm scale (Fig. VI), which slips on the lens and permits reading the diaphragm aperture settings from the side.

For higher magnifications (more than 4 times) directly on the film, the Mikrotar F/1.6 1 cm. lens is supplied; used with the extension tubes, this lens produces magnifications up to 25 times directly on the film. (See Fig. VIII)

The column (Fig. IV) of the Universal Stand can be fitted to the standard tripod by using an intermediate adapter. With the use of a ball and socket swivel tripod head, the camera can be readily manipulated for the photographing of close objects at various angles.

When using the Contameter optical near focusing attachment with the Universal Stand (Fig. VII), we suggest using the micrometer focusing mount. This focusing slide has a geared slow motion permitting extreme accuracy when adjusting the focus.

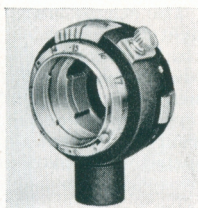


Fig. V



Fig. VI

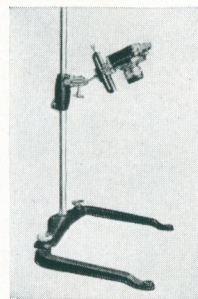


Fig. VII

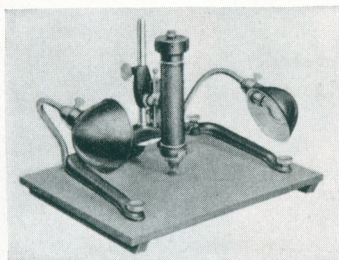
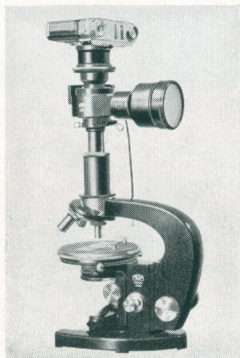


Fig. VIII

The Mirror Magnifier (Fig. IX) is a combination right angle focusing screen and a 3 times magnifier which covers the full 1 x 1½" focusing screen. The advantages of a right angle focusing screen are many; for example, when the optical system is in a vertical position, the operator may sit restfully in front of the apparatus so that the arms are supported while manipulating the object.



Fig. IX



### MIFLEX ATTACHMENT FOR THE MICROSCOPE

With the Miflex attachment the CONTAX body is used on a complete microscope. A specially designed mount insures rapid and vibrationless fitting of the camera. The Miflex can be readily removed from the microscope and replaced in a few seconds. It can be used with eye pieces of different magnifications. The image is projected on a ground glass screen and can be observed up to the instant of exposure. The reflex prism for projecting the image on the ground glass is simultaneously displaced when pressing the shutter cable release, thus giving the full intensity of the light. The Miflex shutter has speeds from 1 second up to 1/100th second.



### PANFLEX (MIRROR-REFLEX) APPARATUS FOR CLOSE-UP PHOTOGRAPHY

The Panflex is a separate unit, similar to the Flektoscope. Since it advances the lens about 3 inches beyond normal position, it is useful for large-scale reproductions at short working distances. The image is composed and focused on a fine-grain ground-glass under a magnification of 5 times. The mirror (which is coupled with the shutter through a *single* cable release) is automatically lifted just before exposure, and returns of itself afterward. It may be used with any of the Contax lenses.





*Taken with CONTAX  
and Contameter  
Zeiss Tessar F/3.5  
5 cm. and  
20 cm. attachment  
at F/8, 1/50th sec.*

*Fen Small*

*Taken with CONTAX  
and Contameter  
Zeiss Tessar F/3.5  
5 cm. and  
20 cm. attachment  
at F/22, 8 sec.*

*Dr. M. S. Dimand*



*Trichina  
Taken with CONTAX  
and Miflex  
attachment  
5 sec.*

*A. C. Lonert*

## SUNSHADES

Regular sunshades are available for all lenses.

For Tessar F/8, 2.8 cm.; for Orthometar F/4.5, 3.5 cm. and for Biogon F/2.8, 3.5 cm., special sunshade 1283/10.

Collapsible sunshade for 5 cm. lenses, 1283/3.

Adapter for using above with F/4, 8.5 cm., F/4, 13.5 cm. and F/6.3, 18 cm. lenses, 1283/11.

## FILTERS

Carl Zeiss light or dark yellow.

Zeiss Ikon light, med., or dark yellow.

Zeiss Ikon ultra-violet.

Zeiss Ikon graduated yellow sky filter

Zeiss Ikon green.

Zeiss Ikon yellow-green.

Zeiss Ikon orange.

Zeiss Ikon blue.

Zeiss Ikon light red.

Zeiss Ikon medium red.

Zeiss Ikon dark red.

Zeiss Ikon infra-red (black).

Intermediate ring adapting 42 mm. filters to 37 mm. mounts.

Carl Zeiss Bernotar Polarizing Filters.

## VIEW-FINDERS

For wide-angle Tessar F/8, 2.8 cm., 432/3.

For Orthometar F/4.5, 3.5 cm., 432/5.

For Biogon F/2.8, 3.5 cm., 432/5.

For wide-angle Biotar F/2, 4 cm., 432/4.

For Tele-Tessar-K F/6.3, 18 cm., 436/11.

Albada sports finder for 5 cm. lenses only, 433/24.

Albada sports finder for 5 and 8.5 cm. lenses, 433/25.

Albada sports finder for 5 and 13.5 cm. lenses, 433/26.

Multiple finder for 5, 8.5, 13.5 and 18 cm. lenses, 436/1.

Universal revolving finder for five different focal length lenses.

Brilliant low-level waist finder for 5 cm. lenses only, 436/5.

Oblique sighter (60° angle finder), 436/3. (For Contax I only).

Vertical telescopic and angle finder for 5 cm. lenses only, 436/2.

Finder mask for 8.5 and 13.5 cm. lenses for Contax II 543/7; for Contax III 544/47.

Bernotar Orienter 541/27.

Holder for spectacle lens, fitting over view-finder and range-finder

Contax sights. Special lenses should be obtained from local opticians on prescription.\*

## LEATHER CARRYING CASES\*

Soft pouch to fit Contax with 5 cm. Tessar and Sonnar F/2, 5 cm. Collapsible.

Soft pouch to fit Contax with 5 cm. Sonnar F/1.5.

Eveready case to fit Contax with 5 cm. Tessar and Sonnar F/2, 5 cm. Collapsible.

Eveready case to fit Contax with 5 cm. Sonnar F/1.5.

\*In ordering, specify model of Contax.



*Taken with CONTAX  
Biogon F/2.8, 3.5 cm.  
at F/2.8, 1/25th sec.*

*H. M. Freemont*



*Taken with CONTAX  
Sonnar F/4, 13.5 cm.  
at F/5.6, 1/500th sec.*

*J. H. Beacon*

Reinforced round case for 5 cm. lens, 1777/14.  
Reinforced round case for 8.5 cm. Sonnar F/2, sunshade and filter, 1777/7.  
Reinforced round case for 8.5 cm. Triotar F/4, sunshade and filter, 1777/6.  
Reinforced round case for 13.5 cm. Sonnar F/4, sunshade and filter, 1777/6.  
Universal case for Contax II and III with 5 cm. lens, wide-angle Tessar, filters, supplementary lens, magazines, daylight-loading roll film and one telephoto lens, 1786/3.

### TRIPODS AND TRIPOD PARTS

Tabletop and chain tripod, 1624/10.  
Unipod single-legged telescoping support, 1624/11.  
Contax Harness.  
Tilting tripod head, 1630/2.  
Ball and socket swivel tripod head, 1628/10.  
Tele-lens tripod stock head, 541/30.  
Intermediate extension piece for tripod when using Contax in Eveready case, 1628/11.

### PLATE BACK ADAPTER AND ACCESSORIES

Contax plate back (specify for which model), using 3 x 4.5 cm. plates, complete with one holder.  
Extra plate holder, 540/14.  
Sheath (wedge-plate) for using cut-film with plate back, 540/8.  
Template for cutting 3 x 4.5 cm. plates from large sizes, 2006/1.  
Insert ground glass focusing screen, 540/11.

### PHOTOMICROGRAPHIC ATTACHMENT

Miflex for photography through a microscope, with bayonet lock for attaching Contax body (no Contax lens necessary).

### ENLARGING APPARATUS

Magniphot enlarger, complete with column, baseboard, condenser, bulb and clamp-down negative lever, but without lens, 1455.  
Magniphot, as above, but with special projection anastigmat.  
Opal bulb 60W-110V (75W-125V) for Magniphot.  
Red filter attachment for Magniphot.  
Glass sheets for wet negative projection.  
Focusing mount for using 5 cm. screw-in (without bayonet-lock) lenses in Magniphot, 1454/23.  
Intermediate ring with bayonet-lock for using 5 cm. Contax lenses in enlargers having screw-in mounts, 1454/31.

**Metal paper-holders (hinged) :**

- |  |   |
|--|---|
| For paper 2 $\frac{1}{4}$ "x3 $\frac{1}{4}$ " (6.5x9 cm.)  | For paper 5"x7" (13x18 cm.)                 |
| For paper 3 $\frac{1}{4}$ "x4 $\frac{1}{4}$ " (8x10.5 cm.) | For paper 7"x9 $\frac{1}{2}$ " (18x24 cm.)  |
| For paper 4"x6" (10x15 cm.)                                | For paper 9 $\frac{1}{2}$ "x12" (24x30 cm.) |

## REPRODUCTION AND COPYING APPARATUS

- Reproduction stand, complete with rings and masks, for copying in ratios 1:1 to 1:4, 5520/1.
- Wooden box for above, 5520/0.
- Reproduction bracket for use for column and baseboard of Magniphot enlarger, for copying in ratios 1:1.6 to 1:14 (objects from about 1 $\frac{1}{2}$ " x 2" to 13 $\frac{1}{2}$ " x 20"), 1454/25.
- Lighting equipment for use with reproduction bracket on Magniphot column, 1454/27.
- Set of 2 additional reflectors with attachment clamps, 1454/37.
- Baseboard and column for reproduction bracket (as with Magniphot), 1454/28.
- Set of 3 Delta lenses required when 5 cm. Sonnar is used with reproduction bracket, 995/32.
- Ground glass focusing screen with bayonet-lock, for use with reproduction stand or reproduction bracket, 5520/6.
- Slip-on focusing screen magnifier and light-exclusion hood, 5520/7.
- Universal Micro-Macro Outfit for reproduction pictures of actual size up to 25x directly on film.

## VIEWING MAGNIFIERS

- Hand magnifier with clamp collar focusing lock, mag. 6x.
- Hand magnifier with clamp collar focusing lock, mag.10x.
- Hand magnifier with sliding sleeve, mag. 6x.
- Hand magnifier with sliding sleeve, mag. 10x.

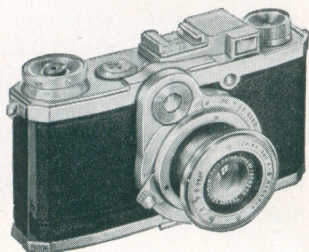
## MISCELLANEOUS

- Spirit level, 888/1.
- Perkino developing tank.
- Neck strap for the Contax.
- Liliput printing frame for single 24 x 36 mm. negative, 2643/24.
- Autoknips self-timing automatic release, 1394/6.
- Cable release for time and instantaneous exposures, 1312/24.

## Other Zeiss Ikon 35 mm. Cameras

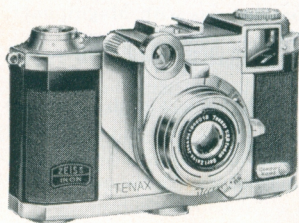
### NETTAX

Available with 2 interchangeable lenses—Zeiss Tessar F/2.8 and F/3.5, both 5 cm. Incorporates many well-known Contax features—built-in superimposed-image range-finder; automatic film transport, preventing double exposures; detachable back; loading like Contax. Accessories available. 9 speeds, 1/5 to 1/1000 sec. and B.



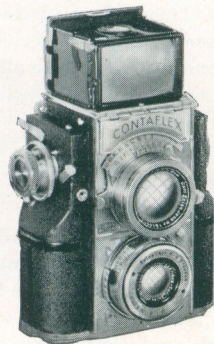
### TENAX

A small, compact auto-focusing miniature camera for general photography; also for rapid sequence "stories-in-pictures." With a single movement, controlled by one finger, a short-throw lever advances the film and sets the shutter. Optical view- and range-finders are combined in one large opening. 50 pictures 1" x 1" (24 x 24 mm.) on Contax film. Four interchangeable ZEISS lenses, including wide-angle and telephoto—standard lenses are Sonnar F/2 or Tessar F/2.8 of 4 cm. Compur Rapid self-timing shutter, 1 to 1/400th sec.



### CONTAFLEX

Contaflex is a twin lens reflex camera with built-in photo-electric exposure meter. The camera for photographers who prefer ground glass focusing to the auto-focusing rangefinder type of camera. The meter is extremely sensitive, permitting readings even in the poorest light, and is affected only by light from the scene. Its 24 x 36 mm. size picture is shown 60% larger on the ground glass, affording the utmost ease and accuracy in focusing. Uses daylight loading spool or magazines, also cut-film or plates. Six interchangeable lenses. 11 speeds up to 1/1000 sec.



---

---

# *Zeiss Ikon Cameras*

are precision instruments made by



Europe's largest and leading camera concern.

They represent over 75 years' experience in the development and manufacture of fine cameras, and have behind them a tradition of quality that is recognized in all parts of the world.

## ZEISS LENSES

equally famous for their superior performance, contribute to the excellent results obtainable with Zeiss Ikon Cameras.

---

## The Zeiss Magazine

devoted to Zeiss Ikon photography, is supplied free of charge for one year to all registered owners of new Contax and Contaflex cameras, purchased first hand from one of our recognized dealers in the United States.

---

---



*Taken with CONTAX Sonnar F/1.5, 5 cm. and yellow filter. At F/4, 1/500th sec.*

*Risch-Lau*

