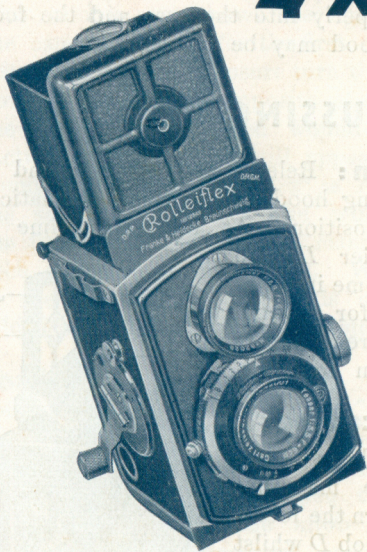


Rolleiflex

4 X 4



Instructions

Franke & Heidecke
G. m. b. H. · BRUNSWICK

IMPORTANT!

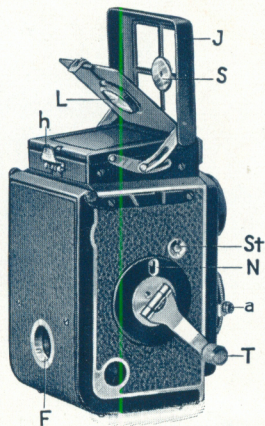
Before placing the camera in the case, be sure to wind back the focussing knob to its full extent and wrap the leather strap around the camera, otherwise it will not fit properly into the case and the focussing hood may be injured.

FOCUSSING HOOD

To open: Release the catch *h* and the focussing hood will spring automatically into position. At the same time the magnifier *L* also will come into position for use and the screen image is open to view.

Fine focussing:

Place the eye close to the magnifier and turn the focussing knob *D* whilst observing the focussing screen. It is not necessary to displace the magnifier, but if it is not required, simply fold it down out of the way.

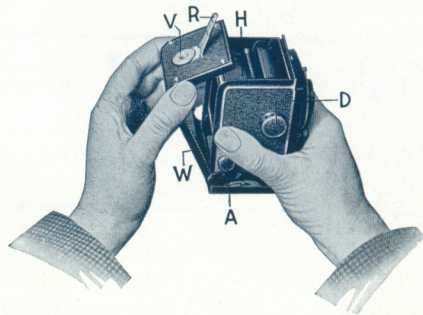


To Close: Fold the magnifier down; then close the sides with the right and left thumbs in the following order; right side, left side, back, cover.

Observation at Eye-level: The cover *J* of the focussing hood serves as a frame-finder. Press with the index finger on the leather through one of the square openings and release the catch *h*. The frame-finder will then spring into place. If you place your eye so that it is reflected in the small concave mirror *S*, the diopter will give the exact outline of the picture. **The pupil of the eye must exactly coincide with the hole in the concave mirror.**

BACK PANEL

To open: Pull the bolt *R* outwards with the right thumb. Then take the back panel by the two corners and with a firm



grip pull it from the camera-body. The back panel can be swung right up.

To Close: Press the back panel firmly against the camera-body with the thumbs and palms and clip back the bolt *R*. The attachment of the back panel is in the form of a hinge. In order to use the Rolleiflex with a lantern for enlarging, the back panel can be entirely removed from the camera, by first swinging it open to its fullest extent and pressing on the spring clip at the left corner. At *V* is an English-thread bush for tripod exposures.

FILM-CHANGING

Loading: Take the film out of the carton and remove the seal. Open the back panel, press the lever *H* firmly down and lay the spool in the trough, where it will be gripped tight. Now pull the pointed end of the wrapping paper upwards over the picture window and push it as far as possible into the wide slit of the take-up spool. When putting in a fresh take-up spool, take care to place the slotted pivot on the right.

Film-carriage: Pull out the hinged winding handle from the resting to the working position. **Now make sure that the film is running straight, otherwise it will cause trouble!**

Close the back panel. Continue to make part-turns with the handle as before carefully and until the figure 1 comes into view in the small red window *F* in the back panel. This is the sole use for the red window. Now swing the handle back to the stop at *N* and press the nipple *St*. The counter now shows the figure 1 and the camera is ready for the first exposure. After making the exposure turn the handle downwards to the opposite stop, when the film will have been wound on one picture-length. No. 2 will appear in the counter and the Rolleiflex is ready for the second exposure. The winding of the film continues in this manner after each exposure until No. 12. When not in use the winding-handle is of course folded away in the resting position.

Unloading: After the twelfth exposure you will hear a soft click, which indicates that the film is finished. Set the counter at No. 1 and wind on until the film is completely wound up. Open the back panel and pull out the knob *A*, when the spool will spring out and can be sealed. **Pack away as light-tight as possible. Never change films in brilliant sunlight.**

If after the twelfth exposure the movement of the winding handle seems to meet with strong resistance, it is advisable to

loosen the back panel slightly, but this must be done under protection from light; in the darkroom, for example, or if outdoors, under a coat or jacket.

THE SHUTTER

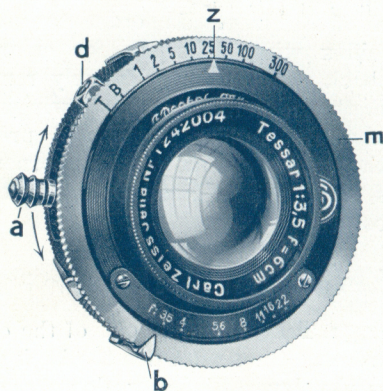
The operation of the Rolleiflex shutter is agreeably simple. You have merely to adjust the large metal ring *m* in order to obtain any desired length of exposure.

If you set the letter *T* over the pointer *z* and press the release lever *a* downwards, the shutter will open. It will only close when you press the lever *a* a second time. This setting is employed for long time-exposures from the tripod.

With the letter *B* at the pointer, the shutter will open when the release lever *a* is pressed, but it will close again as soon as the lever is allowed to spring up again. This setting is used for short time-exposures from about 2—5 seconds duration. Only very steady hands can work without a tripod.

The figures 1—300 indicate fractions of a second, i. e., $\frac{1}{1}$ — $\frac{1}{300}$ th second. Set the pointer at any of these figures and push the release-lever upwards. When you make the exposure the selected time will be given automatically.

When setting at $\frac{1}{300}$ th second a second spring is brought into play. Therefore, whilst the speeds from $\frac{1}{1}$ to $\frac{1}{300}$ rise continuously, it is impossible to obtain any intermediate speed between $\frac{1}{100}$ and



$\frac{1}{300}$. Furthermore, in setting at $\frac{1}{300}$ a certain resistance must be overcome and the ring must be adjusted before the shutter is "cocked". The pointer *b* operates the stops. A cable-release can be screwed in at *d*.

PROXARS

These auxiliary lenses permit photographs to be taken at a distance of 20 and 13 inches respectively. For the Rolleiflex two identically paired Proxars are always

requisite. Set *D 1* can be focussed from 33 to 20 inches and Set *D 2* from 20 to 13 inches. Special stopping down or alteration of exposure time is unnecessary.

USE OF CARRYING STRAP

It is often desired to carry the camera ready for immediate use, instead of in the leather case. For this purpose the Rolleiflex is provided with a neat black strap which allows the camera to be hung round the neck at breast height. The metal clips at the sides of the camera permit the strap to be so inclined as to give the Rolleiflex the desired vertical position.



Ad. Fischl jr.

Berlin W 8

Friedrichstrasse 191

Tel.: A-1 Jäger 3254