

Nikon N50

PHOTO GUIDE

SHORTCUT TO GREAT PICTURES



Thank you for selecting the Nikon N50 camera — your shortcut to great pictures. We prepared this Photo Guide to help you enjoy using the N50 and making great pictures with it. Inside you'll see some examples of the type of photographs that you, too, can make.



SIMPLE MODE

- Turn dial to SIMPLE
- Set focus switch to AF (autofocus setting)
- Set and lock lens at minimum aperture (orange number)
- Switch ON camera power
- Choose from four Programs:

AUTO



General-
Purpose



Landscape



Portrait



Close-up



AUTO SIMPLE MODE

General-Purpose Program with AF Zoom-Nikkor 35-80mm f/4-5.6D set at 35mm



General-Purpose Program

Use this Program for most picture-taking situations — indoors or outdoors, for stationary or slowly moving subjects, near or far, in bright or dim light. Use the built-in flash when it's recommended.



SIMPLE MODE

Landscape Program with AF Zoom-Nikkor 28-70mm f/3.5-4.5D set at 28mm



Landscape Program

Use this Program whenever you're making a picture of a distant scene, like a boat on a lake, a block of buildings, mountains or the seaside. Don't use flash — the scene may be too far.



Portrait Program with AF Zoom-Nikkor 80-200mm f/2.8D ED set at 200mm



SIMPLE MODE

Portrait Program

Use this Program whenever you're taking pictures of people or pets. It creates an artistically blurred background to accentuate your main subject. Use the built-in flash when it's recommended.



Close-up Program with AF Micro-Nikkor 60mm f/2.8D



SIMPLE MODE

Close-up Program

Use this Program when you're taking pictures up close — a flower, an ornamental detail, a butterfly, or if you're copying a picture. Use the built-in flash when it's recommended.

ADVANCED MODE

• Turn dial to **ADVANCED**

• Set focus switch to **AF**

(autofocus setting)

• Set and lock lens at minimum aperture

(orange number)

• Switch ON camera power

• Choose from eight Programs:



General-
Purpose



Landscape



Portrait



Close-up



Sport



Silhouette



Night Scene



Motion Effect

S

Shutter-
Priority Auto

A

Aperture-
Priority Auto

M

Manual
Exposure

• Or choose from three other exposure modes:



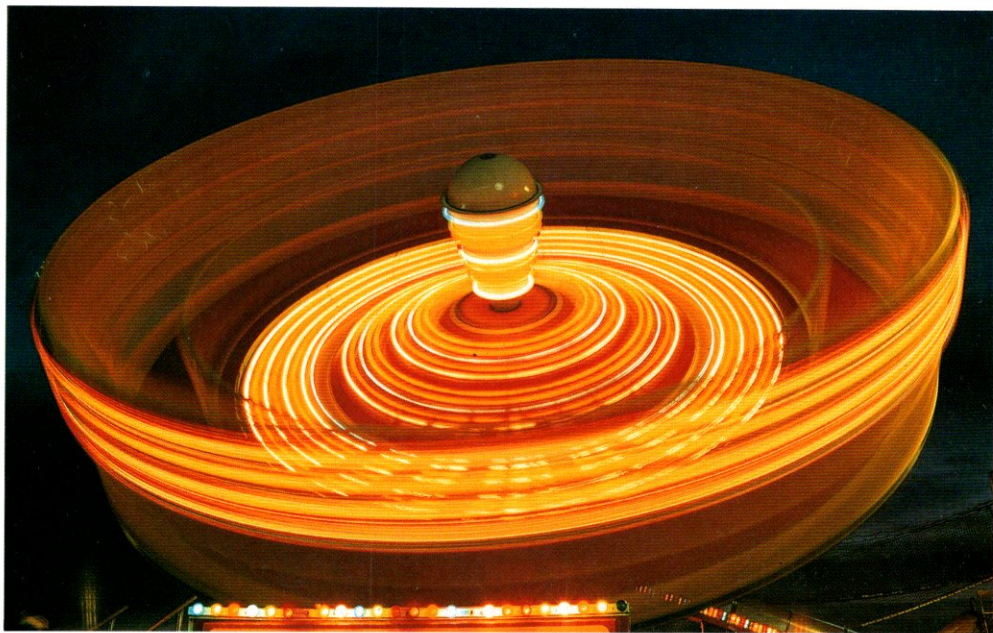
Sport Program with AF Zoom-Nikkor 80-200mm f/2.8D ED set at 200mm



ADVANCED MODE

Sport Program

For creative pictures of moving subjects. Makes the main subject stand out against a blurred background. For maximum effect, use a telephoto lens; the shorter the lens' focal length, the less the effect. Don't use flash because it restricts the available shutter speeds.



Night Scene Program with AF Zoom-Nikkor 35-80mm f/4-5.6D set at 35mm



ADVANCED MODE

Night Scene Program

Use this program to capture the beauty of a night scene in available light, such as illuminated monuments, traffic lights or neon signs. But hold the camera steadily or use a tripod to prevent camera shake because the shutter speed will be very slow.



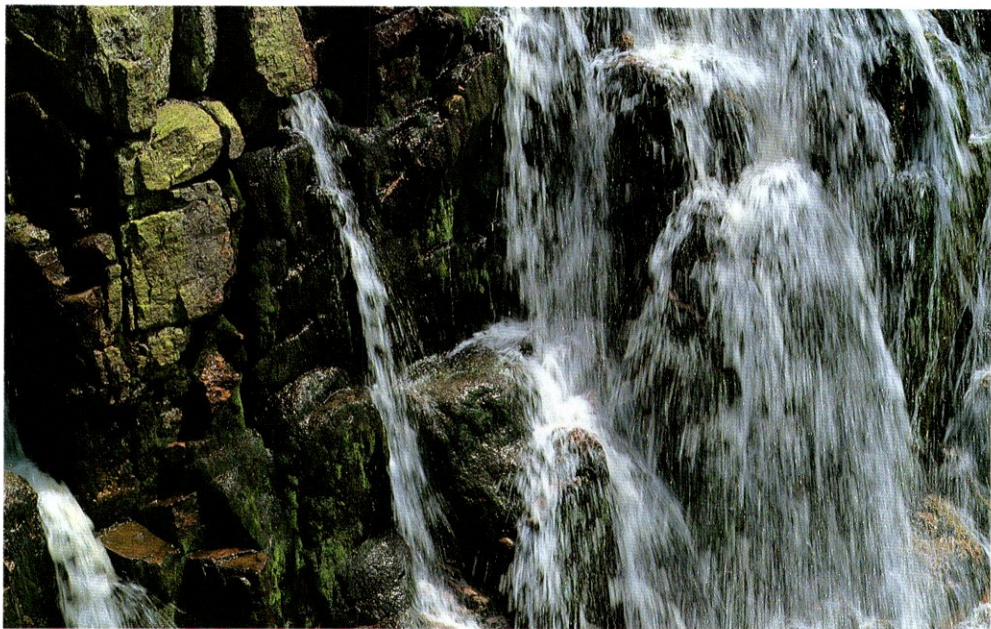
Night Scene Program with AF Zoom-Nikkor 35-70mm f/2.8D set at 35mm



ADVANCED MODE

Night Scene Program with Flash

Captures all the lighting in the scene — including the foreground, which is illuminated by the built-in flash, and the background. This program keeps the whole scene's lighting in balance. Excellent for use with night scenes where the background is interesting and you want to show it.



Motion Effect Program with AF Zoom-Nikkor 35-80mm f/4-5.6D set at 80mm



ADVANCED MODE

Motion Effect Program

Creates a great visual effect, capturing the blurry effect of flowing water, for example, against a sharp background of trees or that of a moving carousel at an amusement park.



Motion Effect Program with AF Zoom-Nikkor 35-80mm f/4-5.6D set at 80mm



ADVANCED MODE

Motion Effect Program with Panning

Great for when your subject is moving and you're following along with your camera in a panning motion. The subject will come out relatively sharp, with the background becoming a blurred streak of colors and shades.

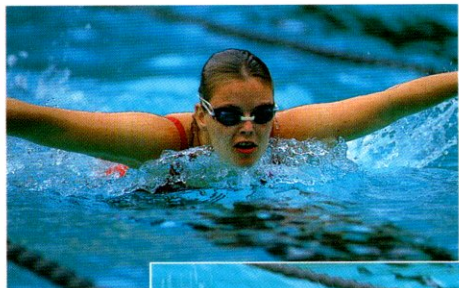


ADVANCED MODE

Silhouette Program

Silhouette Program with AF Zoom-Nikkor 28-70mm f/3.5-4.5D set at 28mm

Effective only when the background is bright and the subject is in shadow or comparatively dark. The result is dramatic with a wideangle lens — 28mm or wider — although a telephoto can also be used. Excellent for sunsets or pictures of people against the sky. Don't use flash!



High speed
(1/2000 sec.)



Slow speed
(1/90 sec.)

S ADVANCED MODE Shutter-Priority Auto Exposure

Depict action in a still photograph by selecting a shutter speed that matches the action. A fast shutter speed can stop action; a slow speed used with a moving subject will create blur. Experiment with different speeds as you photograph a moving subject.



Small aperture
(f/22)



Large aperture
(f/2.8)

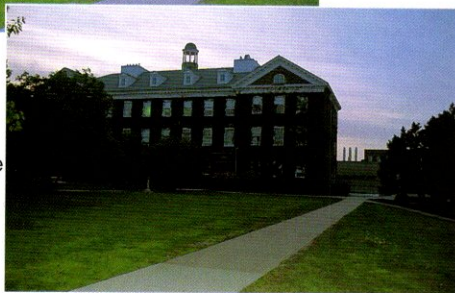
A ADVANCED MODE Aperture-Priority Auto Exposure

Choosing the aperture allows you to control the picture's depth of field (DOF). DOF refers to how much sharpness is apparent from the foreground to the background. Smaller apertures increase DOF; larger apertures decrease it. Notice the difference between the pictures.



Auto exposure

Intentional
underexposure
on Manual



M ADVANCED MODE Manual Exposure

In any auto exposure mode, each time the light changes the N50 automatically adjusts for correct exposure. But perhaps you'll want to create a different version of the same picture by choosing the shutter speed and lens aperture. See for yourself — both pictures look good!



Underexposed (-1EV)



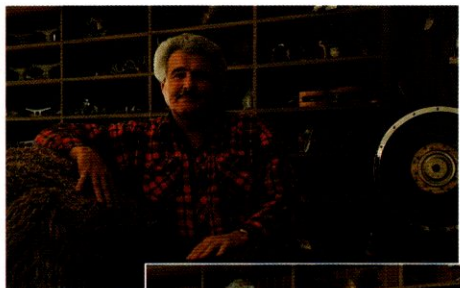
Correctly exposed

Overexposed (+1EV)

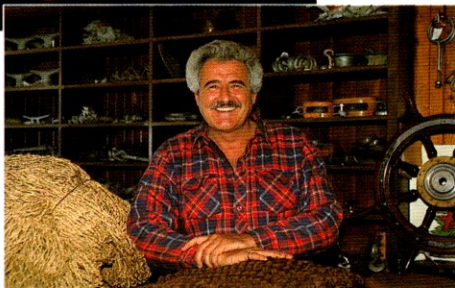


+/- ADVANCED MODE Exposure Compensation

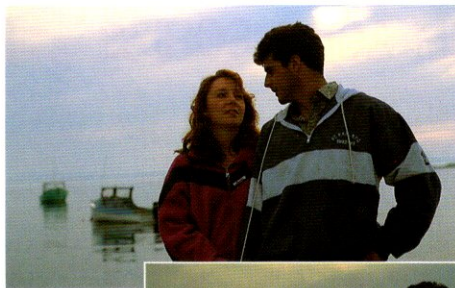
This feature allows you to add a personal touch or variety to your pictures. Shoot the same subject three times, each one with a different effect, by compensating the exposure. Don't they look interesting?



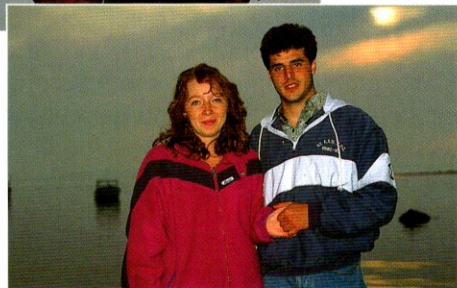
Dark scene
without flash



Dark scene
with flash



Backlit scene
without flash



Backlit scene
with flash

SIMPLE/ADVANCED MODE

Built-in Auto Flash

Use the built-in flash in dark situations and even in bright light. Take a look at the dramatic improvements.

SYSTEM ACCESSORIES FOR ADDED VERSATILITY

For exciting creativity, build your Nikon N50 system with a selection of high-quality Nikon accessories. Choose a wideangle AF Zoom-Nikkor lens like the 28-70mm, 35-80mm or 28-85mm so you can shoot anything from wide interiors to landscapes and portraits with really great results and variety. To capture far-off sports scenes or subjects, or to make effective head-and-shoulders pictures of people or pets, try the 70-210mm or 75-300mm zooms. Add an extra-featured Nikon Speedlight like the SB-23 or SB-26 for special effects. Use filters to create moods and alter colors. For details, visit your local Nikon Authorized Dealer and ask to see Nikon N50 system accessories, or call 1-800-NIKON US. You'll enjoy photography as you never have before!





Nikon®
We take the world's
greatest pictures®
Yours.



© Nikon Inc., 1995

Nikon Inc., 1300 Walt Whitman Road, Melville, N.Y. 11747-3064, U.S.A.

Printed in Japan