

THE *KALART* CAMERA

HAILED AS THE "CAMERA OF TOMORROW"

*A new
Concept
in Fine
Cameras*

WITH Range Finder, Focuspot, View Finder and Speed Flash equipment built into the body of the camera . . . and with exclusive new safety and control features to make picture-taking simpler, more exact and more certain.

Created by The Kalart Company Inc., Plainville, Conn. World's largest manufacturers of Synchronized Range Finders and Speed Flash Synchronizers.

Taking Pictures with the **KALART** Camera Is a Thrilling Experience

REGARDLESS of how long you have been taking pictures or how many other cameras you have used, owning a Kalart will bring you new thrills.

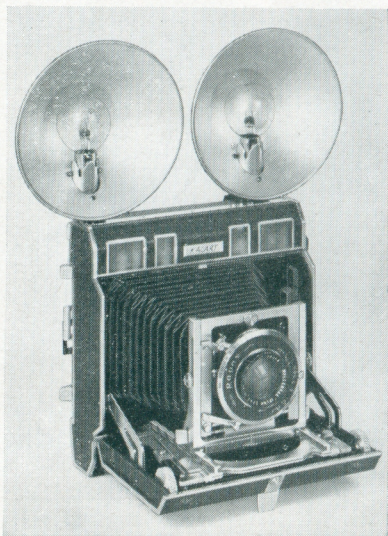
It is the most complete camera ever created. Range Finder, Focuspot, View Finder and Speed Flash equipment are all built into the camera body — eliminating outside wires, cables, bumps and gadgets. Exclusive new control and safety features are incorporated in the camera to minimize mechanical worries and leave you free to concentrate on your subject.

Scientifically designed to be held in the hand

While the picture size of the Kalart Camera ($3\frac{1}{4} \times 4\frac{1}{4}$) is amply large for press and other commercial work, the camera is amazingly compact, light in weight and beautifully balanced. Complete with batteries and one flash reflector unit, it weighs 5 pounds.

Fast, accurate focusing and viewing

The Luminous View Finder is based on principles used in precision military sighting equipment; and enables you to observe your subject and compose your picture with new



Two flash reflector units for midget lamps can be mounted in the two reflector shoes built into the top of the Kalart Camera. One flash reflector unit comes with the camera and a second can be purchased from your dealer. An outlet for extension flash units is also provided.

ease, comfort and accuracy. And you see your subject in *full life size* instead of in reduced scale.

*Pre-eminent for
flash photography*
The Speed Flash Synchronizer was

first introduced by Kalart, and in the Kalart Camera everything needed for flash photography (except the flash reflector unit) is built into the camera body.

How the "Electric Brain" thinks for you

An exclusive Kalart development, the amazing "Electric Brain" literally thinks for you. It guards against blank negatives and accidental firing of flash bulbs.

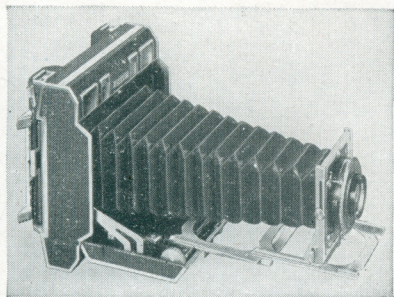
In taking any pictures, the shutter will not trip unless the film holder is inserted *and* the slide drawn. In taking *flash* pictures, the lamp will not flash unless the shutter has been cocked, the film holder inserted and the slide drawn. The operation of the "Electric Brain" is entirely automatic and requires no attention.

The Kalart is a highly versatile camera

Whether you are a professional photographer or an amateur, the Kalart is so versatile that it meets all requirements for all forms of picture taking.

If you do copying or other forms of close-up photography, the Kalart offers you the advantage of triple bellows extension. Maximum distance from lens to film is 12 inches which, with standard 127 mm. lens, permits 1½x enlargements by direct copy.

If your work requires ground glass focusing, a push of a button causes the focusing hood to spring into position and exposes the ground



The Kalart Camera at full triple extension. In every detail it is an outstanding example of fine craftsmanship. The body is die-cast aluminum alloy with hand grained and polished finish. The fittings are stainless steel. The camera is covered in handsome black Levantine.

glass. A built-in magnifier may be pulled down for critical focusing. If you wish to mark guide lines on the ground glass, the back may easily be removed.

The economy of the Kalart Camera

The function of any camera is to take pictures — which necessarily means *good* pictures. Inasmuch as a fine camera can be depended upon to produce good pictures with less risk of failure or waste of film than an inferior camera, it is clearly an economy to own the finest photographic instrument that science can produce.

These well-recognized facts apply with particular force to the Kalart Camera. In considering its price, it must first be remembered that Range Finder, Focuspot and Speed

Flash equipment — which are usually bought as extras with other cameras — are built into the Kalart.

It is a rare photographer who at some time in his career has not fired a flash bulb prematurely or wasted film and missed a valuable shot because he forgot to pull the slide. The Kalart's "Electric Brain" guards against such waste.

Again, the Kalart's Focuspot, provision for double flash reflectors, and the fact that you can take pictures at slow speeds while holding the camera in the hand, may mean getting valuable shots that would be impossible with other cameras. Finally, $3\frac{1}{4} \times 4\frac{1}{4}$, the standard quarter plate size film, is available in wide variety of emulsions for all phases of commercial, professional and scientific work. It is amply large for retouching, satisfactory contact prints and brilliant, needle-sharp enlargements. It also effects a worth-while and year-after-year saving on film costs compared to a larger negative size.

If fine photography is your business or your hobby, you will find that the Kalart Camera more than pays for itself.

The price of the Kalart Camera, complete with flash reflector unit and batteries, and equipped with Wollensak f/4.5 127 mm. coated lens in Rapax shutter, is \$287.50.

Additional Flash Reflector
Unit\$ 5.60

Custom-built Compartment
Carrying Case 29.50

Coilflash* Flash Reflector
Unit for use off-the-
camera, at-arm's-length. 14.75

Multiflash* #2 Unit includ-
ing 20 ft. cord, Flash Re-
flector and Spring Clamp 17.95

Kalabrak* 16-inch Alumi-
num Bracket for mount-
ing Multiflash #2 Unit
to camera 2.95

* Trade Mark



The "Coilflash" FLASH Reflector Unit enables the photographer to obtain desirable lighting results on portraits and other close-up subjects. The coiled wire in the wire chamber (handle) will stretch to over 36 inches—more than arm's length for the average man. It disappears into the chamber when reflector is returned to its base.