

NIKON FULL LINE
PRODUCT GUIDE

WE TAKE THE WORLD'S
GREATEST PICTURES

PMA '94
NEW PRODUCT
SUPPLEMENT

INSIDE
ALL NEW FOR 1994!

- **N50**
- **Touch Cameras**
- **Micro-Nikkor,
Wide-angle Lenses**
- **Sunglasses**
- **Binoculars, Fieldsopes**
- **Accessory Packaging
Program**

Nikon

N50

NEW

SHORTCUT TO GREAT PICTURES

Now great Nikon photographs are as easy as pushing a button. Want a portrait? Push a button. Want a silhouette? Push a button. Want a close-up? Push a button. The N50's automatic operation can give even novice photographers photos they'll be proud to hang on their wall. Matrix metering, built-in flash, interchangeable lenses and other advanced features make the N50 the logical step up to Nikon 35mm SLR photography.



YOUR CUSTOMERS CAN HAVE THE KIND OF PICTURES THEY'VE ALWAYS WANTED — NOW

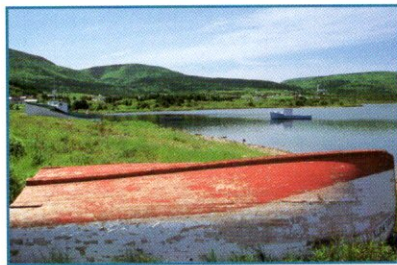
Nikon's new N50 delivers an array of great 35mm SLR photographs at just the touch of a button. It's the ideal "step-up" camera for photographers who might have been intimidated by 35mm SLR photography.

SIMPLE MODE

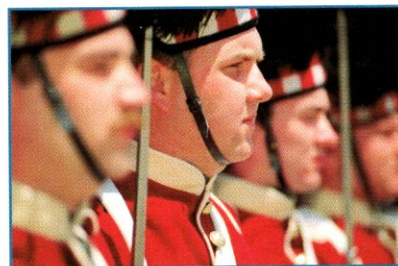
With the camera set on the "simple" mode, just press a button to create the kind of Nikon photograph you want. While you compose, the N50 automatically sets the exposure. Focus is automatic in light as low as EV minus 1.



GENERAL PURPOSE PROGRAM



LANDSCAPE PROGRAM



PORTRAIT PROGRAM



CLOSE-UP PROGRAM

SIMPLE MODE PROGRAMS:

GENERAL PURPOSE PROGRAM

This selection appears automatically when the camera is turned on. It's great for changing everyday pictures into beautiful photographs.



LANDSCAPE PROGRAM

Press the button for the Landscape icon. Achieves greater depth-of-field for postcard-perfect pictures. Outstanding with AF Nikkor wide-angle lenses.



PORTRAIT PROGRAM

Press the button for the Portrait icon and the depth-of-field becomes shallower. Now the background becomes softer, making subjects stand out. Ideal with AF Nikkor portrait-range lenses (85 to 135mm).



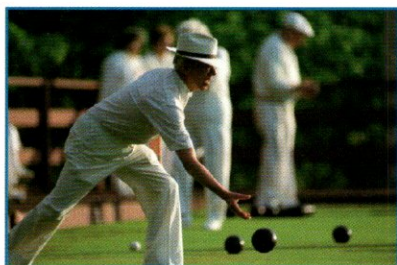
CLOSE-UP PROGRAM

Again the subject stands out from the background. Especially effective with AF Micro-Nikkor lenses and AF Nikkor zoom lenses with macro focus.



ADVANCED MODE

With the camera set to the "advanced" mode, you can create even more types of photographs.



SPORT PROGRAM



SILHOUETTE PROGRAM



NIGHT SCENE PROGRAM



MOTION EFFECT

ADVANCED MODE PROGRAMS:

SPORT PROGRAM

Creates the feeling of motion in your pictures. Add an extra dimension to your photos by panning with a moving subject. Effective with nearly every AF Nikkor lens.



SILHOUETTE PROGRAM

Imagine — automatic silhouettes! Subjects appear dark against a bright background. Outstanding near windows, at sunset or other strongly backlit situations.



NIGHT SCENE PROGRAM

Captures background lights. For dramatic photographs that look like they're right out of a magazine!



MOTION EFFECT

This selection automatically chooses slower shutter speeds to make subjects appear to flow through the scene. Also creates a great effect with panning.



OTHER ADVANCED FEATURES

- **Other advanced mode techniques** include shutter-priority auto exposure, aperture priority, auto exposure and manual exposure. • **Top shutter speed** 1/2000 sec; top flash sync 1/125 sec. • **Flexible Program** enables you to shift an automatically selected shutter speed or aperture combination by 1 EV. • **AE-lock** lets you change picture composition without affecting exposure. • **Exposure Compensation** allows you to deliberately overexpose or underexpose photos by ± 5 EV in 1/2 EV increments. • **Exposure Memory** stores your favorite exposure mode or program for instant recall. • **Choice of Focus Modes** lets you choose "Single Servo" autofocus for stationary subjects; "Continuous Servo" to stay with the action. Also focus manually. • **Self Timer** lets you become the subject of your own pictures. • **Extra-long Time Exposure** Setting keeps the shutter open as long as you like.

4-PAGE INSTRUCTION BOOK

The N50 comes with a simple, 4-page instruction book that can have anyone shooting in minutes. Advanced photographers can turn to the complete instruction book for more information.

ADVANCED FEATURES MAKE THE N50 A TRUE MEMBER OF THE NIKON FAMILY

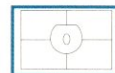
SHARP, CLEAR INFORMATION READOUT

The N50 is the first SLR camera to use a dot-matrix LCD panel. It's not only easy to see in any light, *it's also easy to understand!*



6-SEGMENT 3D MATRIX METERING

The N50 uses a 6-segment matrix light-metering system to evaluate each scene. When used with Nikon's new D-type autofocus lenses, it combines exposure information with data on distance and focus. The result? Reliable exposures, frame after frame, even in difficult lighting.



BUILT-IN FLASH

Powerful built-in flash pops up. Advanced matrix-balanced fill-flash means all-new pictures. Use flash in daylight to brighten shadows, while keeping background light natural.



LOW LIGHT AUTOFOCUS/FOCUS TRACKING

The N50's advanced AM200 autofocus sensor module works in light as low as that of one candle (EV minus 1). In light where you can hardly see, *it can!* And, Nikon's revolutionary focus tracking has also been incorporated into the N50.

INTERCHANGEABLE NIKKOR LENSES

Because the N50 incorporates Nikon's famous F lens mount, choose from a wide variety of AF Nikkor lenses. All designed to take the world's greatest pictures.

OPTIONAL SPEEDLIGHTS

Use the N50's powerful built-in flash or choose an optional Nikon Speedlight like the compact SB-22, SB-23 or advanced SB-25. Either way, you'll gain power and versatility.



AN ARRAY OF ACCESSORIES

The N50 accepts a full range of Nikon system accessories, including camera cases, camera straps, eyepiece correction lenses and attachments for close-up photography.

Nikon Product Number: 1710 NCP

Zoom-Touch 105 VR QD

THE WORLD'S FIRST

38-105MM

ZOOM AUTO

COMPACT WITH (VR)

VIBRATION REDUCTION

FOR ENHANCED

SHARPNESS

NEW



The Zoom-Touch 105 VR QD features Nikon's new Vibration Reduction technology. Now get sharper pictures even at slow shutter speeds in dim light or in hand-held telephoto situations. Power zoom lens, built-in flash, panorama format option and other features make this Nikon Touch camera a great choice. You'll get sharper pictures in more situations than ever before.

(VR) VIBRATION REDUCTION

Here's how VR works: When the shutter button is depressed halfway, two sensors detect the amount of camera movement. If camera shake seems possible, a green LED blinks. Then, during the exposure, vibration reduction technology subdues the effect of camera movement. The result? VR makes sharper pictures possible down to 1/4 second shutter speed. Now shoot with greater confidence in dim light, or hand-hold the Zoom-Touch 105 VR QD even with the zoom lens set to 105mm.

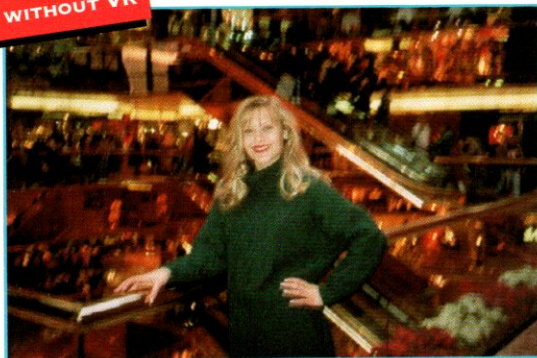
WORKS WITH AUTO ZOOM FLASH

Vibration Reduction also works with the Zoom-Touch 105 VR QD's built-in auto-zoom flash. This means the camera can operate at slower shutter speeds, giving you well-balanced exposures of both the subject and the background ("slow sync" flash). Plus anytime flash and flash-cancel modes.

38 TO 105MM POWER ZOOM LENS

From 38mm wide-view shots to 105mm portraits, candid and close-ups, the Zoom-Touch 105 VR QD lets you zoom in to where the action is — at the touch of a button. The Nikon zoom lens delivers the extra edge for sharp, clear pictures.

WITHOUT VR



105MM SHOT TAKEN WITH REGULAR ZOOM COMPACT

WITH VR



105MM SHOT TAKEN WITH NIKON'S EXCLUSIVE VIBRATION REDUCTION SYSTEM

ZOOM-TOUCH 105 VR QD

- Vibration Reduction for sharper pictures
- 38-105mm zoom lens
- Built-in flash with Flash Cancel, Anytime Flash and Slow Sync modes
- Autofocus with Focus Lock and Infinity Focus
- Built-in UV filter to protect the lens from dust and dirt
- Fully automatic film operation with mid-roll power rewind and DX setting



38MM



85MM



105MM

- Self-timer
 - Built-in panorama mode and data imprint function
 - Red-eye reduction
 - Unique Size Scale Imprint estimates subject's size and imprints scale on picture
 - Quartz date imprint of month/day/year, day/hour/minute
- Nikon Product Number: 1834 NCP**

LITE-TOUCH ZOOM

NEW

THE WORLD'S SMALLEST 35MM AUTOFOCUS ZOOM CAMERA

The Nikon Lite-Touch Zoom is today's smallest and lightest 35mm AF zoom compact camera. It has Nikon quality throughout with features that will enhance your picture taking. You'll want to take the Lite-Touch AF Zoom with you everywhere.



Shown actual size!



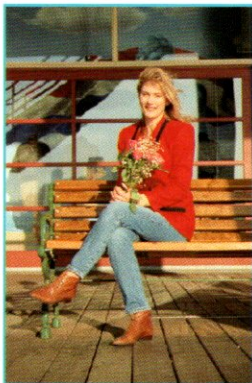
70MM

35 - 70MM ZOOM FOR RAZOR SHARP PICTURES

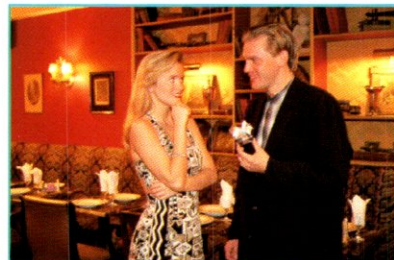
Zoom from 35mm for wide-view photos, to 70mm telephoto for distant scenes or close-ups.

AUTO FLASH/AUTO FOCUS

Built-in flash fires automatically when it's dark. Or, cancel flash. Autofocus assures



35MM



sharp pictures. Focus Lock and Infinity Focus add even more versatility.

MOVE CLOSE

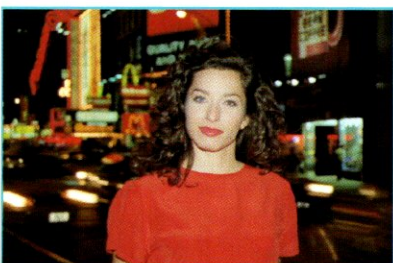
Get as close as 2 feet with any zoom setting.

RED EYE REDUCTION

Red-Eye Reduction lamp helps make your flash pictures of people look better.

BRILLIANT NIGHT SCENES

Shutter speeds down to 1/4 second offer stunning low-light photos. With flash, get dramatic new photographs.



NIGHT SCENE/RED-EYE REDUCTION

PLUS SELF TIMER AND AUTOMATIC FILM HANDLING

Make yourself a part of the picture. Hassle-free, automatic film handling from DX coding, to loading and unloading. **Nikon Product Number: 1832 NCP**

PLUS LITE-TOUCH ZOOM QUARTZ DATE WITH PANORAMA!

Get all the great Lite-Touch Zoom standard features, plus data imprint right on your photographs! Your choice of Month/Day/Year, Day/Hour/Minute or no imprint and 24-hour clock.

PANORAMA

Change from normal format to panorama at the flip of a switch (QD version only). **Nikon Product Number: 1833 NCP**



NEW

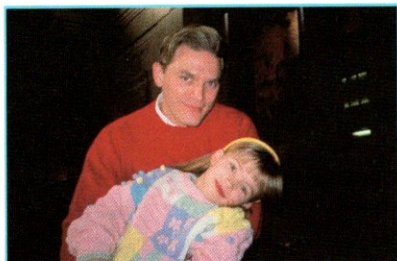


ONE-TOUCH 300

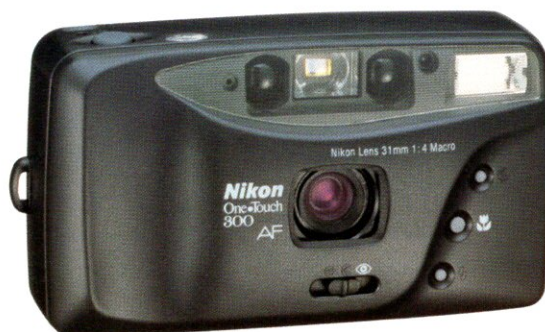
NEW

**COMPACT 35MM
AF CAMERA WITH GREAT
PICTURE-TAKING FEATURES**

From close-ups, to portraits, to self-timer shots, this compact automatic offers easy-to-use features and delivers Nikon quality pictures.

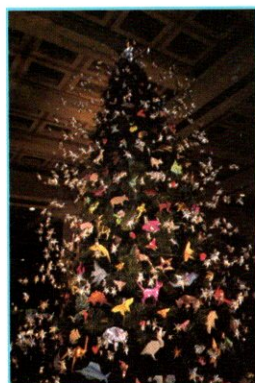


ANYTIME AUTO FLASH



AUTOFOCUS

Simply point and shoot for sharp, clear pictures.



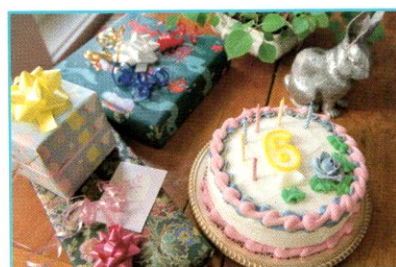
AUTO EXPOSURE

AUTO EXPOSURE

Nothing to set — your pictures come out just right.

ANYTIME AUTO FLASH

Automatically fires for pictures that are bright and full of color, indoors or outdoors. Cancel flash for natural lighting.



MACRO CLOSE-UP

RED-EYE REDUCTION

Helps make your pictures of people look better.

MACRO CLOSE-UP SHOTS

Capture interesting details from as close as 1.5 feet.

AUTO FILM HANDLING

Takes care of everything. Loading, film speed setting, advance and rewind. Even features mid-roll rewind.

SELF TIMER

Use this when you want to put yourself in the picture.

Nikon Product Number: 1851 NCP

FUN-TOUCH 3

**NOW GREAT PICTURES
ARE EASY!**

NEW

Choose this great Nikon Touch camera and there's almost nothing to do but load film and take pictures. And the Fun-Touch 3 is so compact, you'll want to take it with you everywhere!



FULLY AUTOMATIC OPERATION

Focusing and exposure are automatic. Just load a roll of film and look for a great subject.

AUTOMATIC FLASH

Indoors or outdoors, built-in flash automatically brightens any scene.

RED-EYE REDUCTION

Red-Eye Reduction lamp helps make your pictures of people look better.

Nikon Product Number: 1863 NCP

**SEE COMPLETE
TOUCH CAMERA SPECS
ON NEXT PAGE**

THE GREAT OUTDOORS BECOMES EVEN GREATER

NIKON DIPLOMAT BINOCULARS 8x23, 10x25

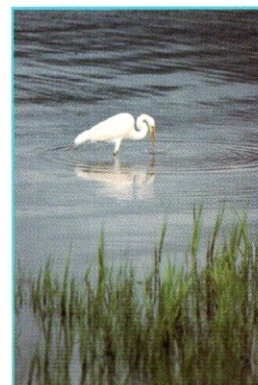
These extraordinary new Porro prism binoculars redefine the word "sharp." Compact and portable, the Diplomat features cutting-edge aspherical (AS) lenses for almost zero distortion. Combining exceptionally bright images with superb edge-to-edge sharpness, the Diplomat offers high contrast and rich, true



colors. The all-metal body with sleek, beautiful lines and easy grip two-tone rubber armor, makes for excellent handling and durability. Eyeglass wearers will especially enjoy the exceptionally long eye-relief for a compact binocular. A unique diopter control lock prevents your personal diopter setting from moving unintentionally. (8x23 shown; 10x25 also available).

Nikon Product Number 8x23: 7896 NCP
Nikon Product Number 10x25: 7897 NCP

NEW



TOUCH CAMERAS SPECIFICATIONS

	Zoom-Touch 105 VR QD	Lite-Touch Zoom	One-Touch 300	Fun-Touch 3
Lens				
Focal length	38-105mm	35-70mm	31mm	32mm
f/stop	4-7.8	3.5-6.5	4	4.5
Panorama option	yes	yes, w/QD only	—	—
Autofocus				
Autofocus system	infrared	infrared	infrared	infrared
Close focus	2.45 ft.	2.0 ft.	1.5 ft.	4 ft
Infinity focus	yes	yes	—	—
Vibration reduction	yes	—	—	—
Exposure				
DX range	50-3200	100-1000	100, 400	100, 400
Non-DX	100	100	100	100
Automatic rewind	yes	yes	yes	yes
Flash				
Guide #*	36-46	30	33	36
Recycle time (approx.)	3.5 sec.	6 sec.	5 sec.	5 sec.
Flash cancel	yes	yes	yes	—
Slow sync	yes	yes	—	—
Red-eye reduction	yes	yes	yes	yes
Anytime flash	yes	yes	yes	yes
Miscellaneous				
Self timer	1, 10 sec.	1, 10 sec.	1, 10 sec.	—
Message print	M/D/Y, D/M/Y, Y/M/D, D/H/M or none	M/D/Y, D/M/Y, Y/M/D, D/H/M or none (with QD only)	—	—
Battery	3V-Lithium	3V-Lithium	1.5V AA(2)	1.5V AA(2)
Battery life	17 rolls	13 rolls	20 rolls	20 rolls
36 exp./50% flash				
Weight without batteries	14.6 oz.	7.1 oz. (QD 7.2 oz.)	6.9 oz.	6.3 oz.
Size in inches				
Width	5.5	4.6	5.0	4.9
Height	3.0	2.5	2.9	2.8
Depth	2.8	1.4	1.9	1.8

*ISO 100, feet

Specifications subject to change without notice.

NIKON 78MM FIELDSCOPES ED

Introducing the perfect tools for birdwatchers and wildlife observers. New Nikon 78mm fieldscopes are equipped with Nikon's legendary ED (Extra-Low Dispersion) lenses, which focus lightwaves of all lengths on the same plane. The result is two new fieldscopes that offer extra-light gathering as well as the ultimate in image resolution and unsurpassed color and contrast. Available in straight or 45-degree angled eyepiece with rotatable body, the 78mm objective lens offers bright, clear images at distances of

NEW



over 400 yards, even in low-light. Smooth controls and precision lens alignment mean top performance.

Nikon Product Number 78mm Fieldscope ED: 7898 NCP

Nikon Product Number 78mm Fieldscope ED Angled: 7899 NCP



ALL-NEW MICRO-NIKKOR LENS SERIES

**MICRO-NIKKOR LENSES – FROM
INFINITY TO LIFE- SIZE THEY ARE
UNEQUALED**

Incredibly versatile, three new Micro-Nikkor lenses

provide unprecedented focusing range. Each lens

will focus from infinity to life-size on the film, a

never-before-equalled feat in 35mm photography.

And, with their superb optical performance through-

out the focusing range, you can trust these lenses for

nearly every picture taking assignment.

CLOSE-RANGE CORRECTION

Most other lenses are optimized for focus at infinity, so pictures will always look their best at great distances. Nikon's Close-Range Correction challenges this concept with optical performance that smooths a lens' performance, so that focusing at infinity and up close will be excellent. Images will be sharp and full of contrast, and distortion due to curvature will be nearly non-existent. The system works through the use of a special optical design which shifts the relative position of selected lens elements and groups within the lens. This shifting compensates for the change in focus and helps obtain peak optical performance. One look at the results and you'll be convinced.

D-TYPE LENS TECHNOLOGY

All of these lenses incorporate the Nikon Distance Signal. When used with the Nikon N90 or N50 and the SB-25 AF Speedlight, distance technology offers enhanced exposure calculations and flash control.

60MM F/2.8 D AF MICRO-NIKKOR



This new lens enhances the reputation of the Micro-Nikkor series even further. The addition

of a Distance Signal adds performance through its compatibility with the Nikon N90 and N50's 3D Matrix Meter, and the SB-25's Monitor Preflash. This lens is a "must-have" for any serious photographer, providing an exceptional range of applications and high-quality performance.

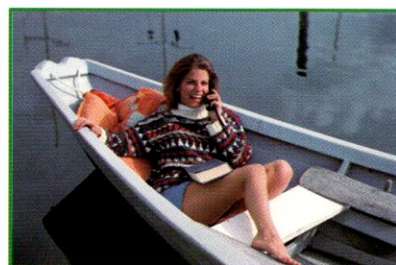
NEW

- Close-Range Correction system ensures high resolution from infinity to close-ups down to 8 3/4 inches.
- Focuses from infinity to life-size (1:1 reproduction ratio)
- A-M (Automatic-Manual) switch enables you to change quickly from autofocus to manual focus, without having to change the camera body's focus mode switch.

Nikon Product Number: 1987 NCP

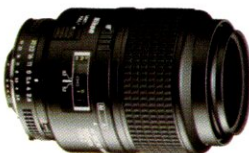


SHOOT CLOSE



SHOOT FAR AWAY

105MM F/2.8 D AF MICRO-NIKKOR



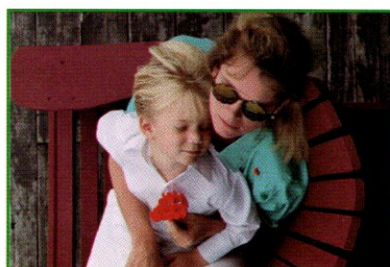
The focal length of this lens adds extra working distance, enabling the more creative use of flash. The added working distance also provides additional com-

NEW

fort for subjects, and allows multiple lighting techniques. For general photography, the lens' 105mm focal length makes it suitable for classic portrait composition, while its close-focusing capability enables interesting detail work.

- Close-Range Correction system ensures high resolution from infinity to close-ups down to 12 inches.
- Focuses from infinity to life-size (1:1 reproduction ratio).
- A-M (Automatic-Manual) switch enables you to quickly change from autofocus to manual focus, without having to change the camera body's focus mode switch.

Nikon Product Number: 1988 NCP



ESTABLISH



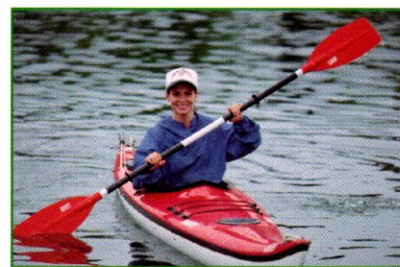
MOVE IN

200MM F/4 D IF-ED AF MICRO-NIKKOR -1:1 LIFE-SIZE REPRODUCTION WITHOUT ACCESSORIES - A FIRST FOR A 200MM LENS

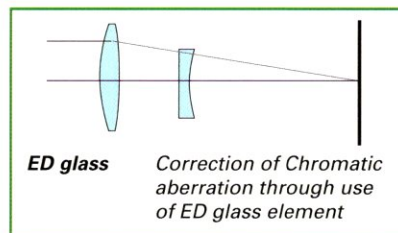


The extra long focal length of this lens provides the most versatile working distance when you simply can't get close to your subject. Internal focusing ensures easier handling and control. Extra Low Dispersion (ED) glass ensures apochromatic-like performance, with high contrast and sharper images. This lens is ideal for anyone who is serious about close-up photography and wants a superb all-around telephoto lens, suitable for both portraiture and candid work — all with excellent balance and handling.

NEW



THIS FAR



NIKON'S EXCLUSIVE ED (EXTRA-LOW DISPERSION) GLASS HELPS TELEPHOTO LENSES LIKE THE NEW 200MM F/4 D IF-ED AF MICRO-NIKKOR CORRECT CHROMATIC ABERRATION

- ED glass has been incorporated into selected elements for superior optical performance
- Internal focusing improves handling and focusing operation from infinity to close-ups down to 19.4 inches
- Focuses from infinity to life-size (1:1 reproduction ratio)
- An A-M switch and clutch mechanism ensure smooth manual focusing as well as fast and accurate change-over to autofocus operation

Nikon Product Number: 1989 NAS



THIS CLOSE



THIS BEAUTIFUL

SPECIFICATIONS FOR NEW D-TYPE AF MICRO-NIKKOR LENSES

	60mm f/2.8 D AF Micro	105mm f/2.8 D AF Micro	200mm f/4 D IF ED AF Micro
Focal length	60mm	105mm	200mm
Maximum aperture	f/2.8	f/2.8	f/4.0
Lens construction	8 elements 7 groups	9 elements 8 groups	13 elements 8 groups
Angle of view	39° 40'	23° 20'	12° 20'
Closest focusing distance	8.75 in.	12 in.	19.4 in.
Reproduction ratio scale	1:10 - 1:1	1:10 - 1:1	1:10 - 1:1
Minimum aperture	f/32	f/32	f/32
Filter size	62mm	52mm	62mm
Tripod mounting collar			Provided
Dimensions	2.8 x 3 inches	3 x 4.2 inches	3 x 7.7 inches
Weight	16 oz.	19.6 oz.	42.3 oz.
Nikon Product Number	1987 NCP	1988 NCP	1989 NAS

ACCESSORIES FOR NEW D-TYPE MICRO-NIKKOR LENSES

Nikon Product Number (NCP unless otherwise noted)	Description	Hood Product #	Hard Case Product #	Pouch Case Product #	Plastic Case Product #	Adapter Ring Product #
1987 NCP	60mm f/2.8 D AF Micro-Nikkor	Screw-on HN-22/#566	CL-32S/#4503	No. 62/#4302	CP-9/#4511	SB-21's UR-3/#2396
1988 NCP	105mm f/2.8 D AF Micro-Nikkor	Snap-on HS-7/#541	CL-15S/#4453 NAS	No. 63/#4303		
1989 NAS	200mm f/4 D IF ED AF Micro-Nikkor	Screw-on HN-30/#4671	CL-45/#4464 NAS			

WIDE-ANGLE — ULTRA WIDE-ANGLE

NOW DISTANCE TECHNOLOGY OFFERS A WHOLE NEW PERSPECTIVE

These new wide-angle Nikkor lenses offer the convenience of autofocus operation with the superior exposure control of distance technology. Versatile, compact and lightweight, they're the perfect addition to any Nikon camera system.

18MM F/2.8 D AF NIKKOR



This lens has an exceptionally wide angle of view and outstanding image quality. Center-to-edge sharpness is superb, with excellent control of distortion and aberration.



- Aspherical lens and rear-focusing system ensure superior optical performance
- Fast f/2.8 maximum aperture with ultra-wide angle of view
- Compact and lightweight for easy handling

Nikon Product Number:
1911 NAS

NEW



24MM F/2.8 D AF NIKKOR

An ideal compact wide-angle lens with excellent optical performance. Autofocus operation is fast and accurate, and the lens' light weight and compact design make it a highly versatile wide-angle lens.

- Close-Range Correction system ensures high resolution from infinity to close-ups down to 15 inches
- Ideal for a variety of wide-angle applications
- Compact. Lightweight. Only 9.5 ounces

Nikon Product Number: 1919 NCP



NEW

SPECIFICATIONS FOR NEW D-TYPE WIDE-ANGLE NIKKOR LENSES

	18mm f/2.8 D AF	24mm f/2.8 D AF
Focal length	18mm	24mm
Maximum aperture	f/2.8	f/2.8
Lens construction	13 elements 10 groups	9 elements 9 groups
Angle of view	100°	84°
Closest focusing distance	10.2 in.	15 in.
Minimum aperture	f/22	f/22
Filter size	77mm	52mm
Dimensions	3.3 x 2.3 inches	2.6 x 1.8 inches
Weight	13.6 oz.	9.5 oz.
Nikon Product Number	1911 NAS	1919 NCP

ACCESSORIES FOR NEW D-TYPE WIDE-ANGLE NIKKOR LENSES

Nikon Product Number (NCP unless otherwise noted)	Description	Hood Product #	Hard Case Product #	Pouch Case Product #
1911 NAS	18mm f/2.8 D AF Nikkor	Bayonet HB-8/#4619 NAS	CL-47/#4466 NAS	
1919 NCP	24mm f/2.8 D AF Nikkor	Screw-on HN-1/#508	CL-305/#4501	No. 61/#4301

NIKON SUNGLASSES

NEW

HOTTEST BRAND UNDER THE SUN

There's no substitute for Nikon quality and now there's no substitute for Nikon style. Hot new designs extend the Nikon collection even further. Made to exacting standards in Nikon's own glassworks (the same glassworks that make legendary Nikkor lenses), these styles reflect Nikon's distinctive

approach to the market – the brand your customers know, the optics they trust, and now the hottest styles under the sun.

Nikon Product Number Hampton: 52230

Nikon Product Number Monterey: 52310 Gold: 52311 Black

Nikon Product Number Solitude: 54350



SOLITUDE



MONTEREY

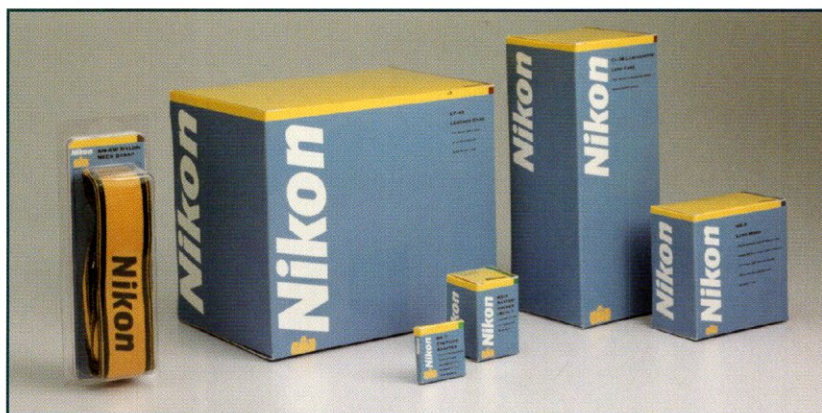


HAMPTON

NIKON ACCESSORIES

NEW PACKAGING SELLS ITSELF

Nikon has completely redesigned its line of SLR accessory packaging in order to assist you in enhancing your accessory sales. This new eye-catching design also includes valuable selling points with system compatibility and each product's unique features and benefits. To make your job easier, each accessory is now color-coded to assist you in inventory management. Nikon has also added a new element to accessory packaging designed to assist you and your customers. All Nikon SLR accessories included in this program are packaged with a unique Nikon hologram symbol that clearly identifies the product as an official Nikon Inc. product.



THE PACKAGING FOR OVER 300 NIKON SLR ACCESSORIES HAS BEEN REDESIGNED TO GIVE IT A UNIFORM LOOK AND APPEAL

NIKON ACCESSORY COLOR CODES



Hoods & Caps



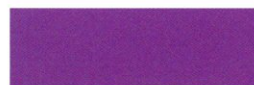
Filters



Teleconverters



Speedlights



Close-Up Accessories



Nikonos Accessories



Cases



Flash Accessories



Viewing Accessories



Motors & Accessories



Remote Releases



Miscellaneous



**Data Backs/
Multi-Control Backs/
Data Link Accessories**



Straps

Photographs appearing in this supplement are the works of Brett Froomer, Al Satterwhite, Jon Ortnier and John Cole. All photographs are the specific property of the photographers mentioned, and may not be reproduced in any way without their express permission.

Nikon®

Nikon Inc., 1300 Walt Whitman Road, Melville, NY 11747-3064, U.S.A.
Printed in U.S.A. © Nikon Inc., 10K01094

