

CORONET MIDGET



THE WORLD'S
SMALLEST CAMERA

HOW TO USE YOUR CAMERA

TAKING
LOADING
PHOTOGRAPHS

Guarantee

THIS Camera has been carefully tested and is guaranteed to be in perfect working order when it leaves our factory. In case of complaints the Camera should be returned to us by post accompanied by this Guarantee Form which must be completed. Stamps value 1/- must be attached to cover cost of return postage and packing.

It is distinctly understood that this guarantee does not cover defects arising from:—

1. Normal and reasonable use.
2. Alteration in any way, so as in our opinion to affect its reliability or performance.
3. Damage of whatsoever nature and however arising.

My name and Address is.....

I purchased the Camera from:—
Name and Address of Dealer:

.....
Approximate date
of purchase:

.....193...

Coronet Camera Co.,
Birmingham, 19.



INSTRUCTIONS FOR USE OF CORONET MIDGET CAMERA.

The Coronet Midget Camera opens a new era in photography for the amateur. The Camera is so small that it can be carried with ease in a lady's handbag, or in a gentleman's waistcoat pocket. Yet notwithstanding its smallness, it produces perfect pictures which can be enlarged to many times their original size.

It is a real Camera for the serious amateur, and not a toy.

Any chemist or photographic dealer will be only too pleased to explain anything you want to know about your Coronet Midget. So do not hesitate to ask if you are in doubt on any point.

HOW TO USE YOUR CAMERA

TAKING
LOADING
PHOTOGRAPHS

PROTECT
YOUR CAMERA
FROM DAMP
AND DUST
WITH THIS
CASE

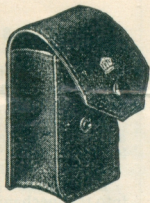
1/9

Morocco Grained
Leather.

Obtainable from all high-
class Photographic
Dealers.

Do not be without a case for your
camera. To keep the instrument
in perfect order, it is a necessity.

Made from morocco - grained
leather and lined with silk.
Supplied in either red, brown,
green, blue or black.



HOW TO LOAD YOUR CORONET MIDGET.

All Coronet Cameras can be loaded in daylight. But do not load in direct bright sunlight—always get into the shade.

Open the back of the Camera by gentle pressure on the two lips at the top and insert spool of film in the bottom chamber with the end of the paper pointing towards the top chamber.

Gently break and remove the gummed band which fastens your new spool of film.

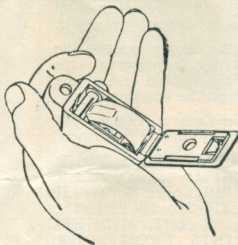


Fig. 1.

TAKING
LOADING
PHOTOGRAPHS

Lead the paper carefully across the opening, keeping the thumb of your left hand on the full spool to prevent it from coming loose and thus fogging your film, and thread the end through the long slot in the empty spool (see Fig. 1). Give the spool two or three turns to make quite sure that the paper is held securely. **TAKE CARE THAT THE PAPER FITS SQUARELY INTO THE SLOT**, otherwise the film will not wind properly.

If, when fitting the paper into the empty spool, you take the empty spool from the Camera, **MAKE CERTAIN THAT WHEN YOU REPLACE IT THE SLOTTED END OF THE SPOOL IS NEAREST THE WINDING KEY.**

Close the Camera.

Move the safety slide into position so that it prevents the shutter from being accidentally pressed, and turn the winding key very slowly, at the same time watching the little red window at the back of the Camera. Soon you will see an arrow appear which indicates that No. 1 section of the film is approaching the position for exposure. **Go VERY SLOWLY,**

AND STOP WINDING THE INSTANT FIGURE 1 APPEARS IN THE RED WINDOW. You are now ready to take photographs.

TAKING PHOTOGRAPHS WITH THE CORONET MIDGET CAMERA.

The lens fitted to this Camera has been specially designed, calculated and produced by a world-famous firm of high-class photographic lens manufacturers. Every one has been definitely and accurately tested and is capable of producing magnificently sharp pictures, which will enlarge to many times the original size.

The lens is of the fixed focus type, so that no adjustment is necessary. It is only necessary for the user to sight the object to be photographed carefully through the direct brilliant viewfinder, and then to press the shutter lever.

The depth of the focus of this lens is such that it renders all objects in sharp focus from 5-ft. to infinity.

It will be obvious, of course, that only snapshots can be taken with this Camera.

The aperture of the lens is F.10, and the speed of the instantaneous shutter is 1/30 secs.

T
A
K
I
N
G

P
H
O
T
O
G
R
A
P
H
S

For Better Pictures Read

better photographs

"AMAZINGLY PRACTICAL" as Mr. A. R. M. says

*Photograph of Durham
Cathedral shows the
West Front and River
Wear*

Taken in
October with
a 7/6 Coronet
Box Camera.



THIS BOOK SHOWS YOU HOW
TO OBTAIN BEAUTIFUL PICTURES
LIKE THIS - EVEN WITH VERY SIMPLE BOX CAMERAS

2/6

144 PAGES - 160 ILLUSTRATIONS
WRITTEN IN NON TECHNICAL LANGUAGE

Written in simple non-technical language. 144 pages. 160 illustrations and 8 beautiful reproductions. Fully indexed.

From all Photographic Dealers or
direct from the Coronet Camera
Co., Birmingham, 19. Price 2/6

U
N
L
O
A
D
I
N
G

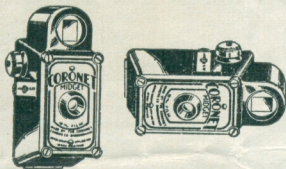
I
M
P
O
R
T
A
N
T

D
E
V
E
L
O
P
I
N
G
&
P
R
I
N
T
I
N
G

For an upright picture hold the Camera upright, as illustrated, and for a lengthwise hold the Camera as illustrated in Fig. 2.

The Camera must be held steady, and the shutter lever pressed very gently.

The shutter fitted is an improved Coronet one-way mechanism, and the snapshot exposure is made on the downward pressure of the lever. When released, the lever returns to its original position, and the shutter resets itself in readiness for the next exposure.



Upright. Fig. 2. Horizontal.

Having taken your photograph, turn the window key until number 2 appears in the red window. This operation should be done very

slowly and carefully, as the distance between the numbers is very short, and if you turn past the figure you cannot turn back.

Owing to the smallness of this Camera, there is not a great deal of space between the position of the winding key and the shutter lever, consequently the following "wrinkle" will be helpful to all users of this wonderful little Camera.

Before turning the winding key, move the safety slide in position. This prevents anyone from accidentally touching the shutter lever and making an exposure while turning the winding key.

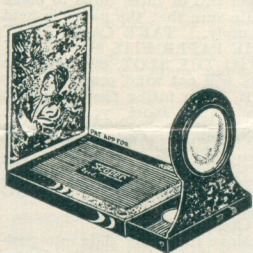
UNLOADING YOUR CORONET MIDGET.

All Coronet Cameras can be unloaded in daylight. But to avoid any possibility of fogging the edges of the film, you must avoid direct light and do the unloading either indoors or in an out-of-the-way corner, or in the shade.

DEVELOPING & PRINTING
IMPORTANT
UNLOADING

SCOPERISE

Your Tiny Prints



The Coronet SCOPER discovers details hidden from the naked eye on your MIDGET prints and gives them astounding perspective, making them almost plastic. Examine all your Midget prints in the Coronet SCOPER and you will get a new thrill.

Price 1/6

Of all Photographic Dealers or if direct, 3d. extra for postage.

IMPORTANT.

After the figure 6 appears in the red window, give Winding Key three turns to make sure the film is properly covered by backing paper, and then open the Camera.

Place your thumb on the full spool and wind until adhesive paper appears. Moisten this and continue winding to fasten the film firmly.

Turn Winding Key until slot of spool is in vertical position, when film will fall out readily.

The film is now ready for developing, either by your local photographic dealer or by yourself.

Transfer the empty spool to the top spool holder, taking great care to see that the slotted end of the spool is nearest the winding key.

Reload the Camera with a fresh spool of film, as already described.

IF REQUIRED, YOUR PHOTOGRAPHIC DEALER WILL SUPPLY YOU WITH LARGE SIZE $3\frac{1}{4} \times 2\frac{1}{4}$ PRINTS, INSTEAD OF THE MIDGET-SIZED PRINTS, FROM YOUR FILM.

DEVELOPING & PRINTING
IMPORTANT

Or, you can have the Midget-sized prints, and carry them about with you in the Coronet Scoper (described and illustrated on page 11), and, by inserting them in this and examining them through the special lens, you will get both enlarged and plastic pictures.

PITFALLS TO AVOID.

Don't attempt indoor snapshots with this Midget Camera.

Don't leave the Camera lying about in the glaring sun for any length of time.

Don't let dust or seaside sand get into the mechanism of the Camera, or you will have the shutter stick.

Don't oil the shutter.

Hold the Camera securely when taking pictures. There is a great tendency with tiny Cameras to move the Camera slightly at the same time as you press the shutter to take a picture.

DEVELOPING & PRINTING

If, when you take your film along to the Dealer for developing you ask for Projection Prints, you will be given the popular $3\frac{1}{4} \times 2\frac{1}{4}$ " size pictures at the usual price of 21. each. A first quality enlargement, which includes spotting and other finishing, can be obtained at 4d.

Every good Photographic Dealer will be able to develop your films, but if you have any difficulty in getting the work done, send it along to us.

D
E
V
E
L
O
P
I
N
G
&
P
R
I
N
T
I
N
G