



"ALL OVER THE WORLD"

FALLOWFIELD'S

PHOTOGRAPHIC SPECIALITIES

146, CHARING CROSS RD.
LONDON. W.C.

The following 16 pages give abridged details of some of

JONATHAN FALLOWFIELD'S

SPECIALITIES.

Full stocks are carried of all the leading makes of apparatus and materials, and a demonstration room has been fitted up at 146, CHARING CROSS ROAD, to assist clients in choosing outfits under practical conditions.

PRICES.—All prices quoted are, for retail orders, strictly nett cash.

DISCOUNTS.—Special discounts are allowed off list prices to Dealers, Shippers and Professional Photographers. Special discount lists sent post-free on application and receipt of Trade Card or Memorandum.

REMITTANCES.—Cheques, Postal Orders and Money Orders should be made payable to JONATHAN FALLOWFIELD, and crossed & Co. for safety.

HOME ORDERS.—Goods can in most cases be forwarded on the same day as orders are received. When this is not possible orders and remittances will be acknowledged at once, and the goods will in all cases be sent with as little delay as possible.

ENQUIRIES.—Full information or advice will be freely given to correspondents, or visitors to 146, Charing Cross Road can have various makes of Cameras demonstrated, and compare their respective merits without being pressed to purchase.

EXPORT ORDERS.—A special department is conducted for Foreign and Colonial Orders, under the management of one fully acquainted with the class of apparatus and materials suitable for use in the varying climates of different parts of the world. Plates, Papers and Films are procured specially from the makers, and packed in suitable manner with due regard to their destination.

Orders from abroad may be sent to me direct or through agents. Those sent direct should be accompanied by remittance; or with reference to London Agents or Bankers, who will guarantee payment on delivery of Bills of Lading; or if of over £5 value, with a deposit of one-half the value (minimum deposit £3) and the balance collected through a local Bank against Bills of Lading. When sending an indent through an agent a copy should be sent to me to prevent errors and avoid delay.

All goods for export are specially selected and most carefully packed. Zinc-lined cases are always used unless otherwise ordered.

JONATHAN FALLOWFIELD

invites correspondence from all interested in photography.

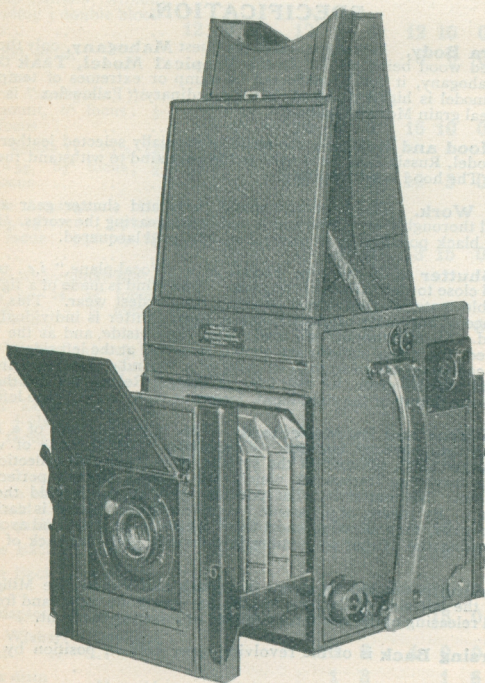
FALLOWFIELD

THE BRITISH JOURNAL ALMANAC ADVERTISEMENTS.

977

The "FALLOWFLEX" Camera.

Entirely made in England, including up-to-date
Focal Plane Shutter.



The "FALLOWFLEX," of which the above is an exact photographic reproduction, is the outcome of 15 years' experience in handling and using Reflector Cameras. It is claimed to be the most reliable Reflex Camera of the present day.

For Specification and Price List, see following pages.

JONATHAN FALLOWFIELD

LONDON W.C.

The "Fallowflex" Reflector Camera.

SPECIFICATION.

Camera Body. Is constructed of the finest **Mahogany**, only thoroughly well-seasoned wood being used. In the **Tropical Model**, **Teak** takes the place of Mahogany, it being unaffected by damp or extremes of temperature. The latter model is highly polished, but the ordinary "Fallowflex" is covered with hard seal grain Morocco leather.

The Hood and Bellows are made of specially selected leather; in the Tropical Model, Russia Leather is used as the only kind to withstand the attacks of insects. The hood is self-erecting.

Metal Work. The important metal parts and shutter gear are hand finished and thoroughly examined and tested before leaving the works. External Fittings are black polished, or in tropical models, gold lacquered.

The Shutter is of the type known as a "Focal-plane," i.e., travelling parallel and close to the surface of the plate. The blind is made of a light-proof, tough flexible material guaranteed to stand the hardest wear. This has only been produced after years of experiment. Each shutter is individually tested and speeded. All adjustments are made from the outside, and as the width of slit is altered, the actual speeds are shown on a dial at the left side of Camera. Exposures can be regulated from $\frac{1}{18}$ to $\frac{1}{800}$ th of a second; time exposure of any duration can also be given. A neat form of Trigger Release is fitted that comes naturally to the thumb of the right hand, focussing being done by the left hand.

The Mirror and its Movement. This important part of a Reflector Camera has many special features. The Mirror itself is made of very thin optically worked glass, silvered on the surface to avoid double reflection. This is fixed in a travelling framework, which, when raised, forms a perfectly light-tight chamber. No matter in what position the Camera is held the Mirror remains firm. By means of a patented contrivance the Mirror is carried in a curve backwards, thus allowing short-focus lenses to be used, and avoiding the risk of breaking the Mirror by coming into contact with the back of the lens mount.

Focussing is effected by means of a Rack and Pinion, the Milled Head is fitted at the left side of Camera, leaving the operator's right hand free for the setting and releasing of the shutter, or raising or lowering the front.

Reversing Back is of the revolving type, held in position by a spring knob.

Rising Front. The lens can be raised or lowered by means of a lever working upon a toothed rack; the lever is in such a position that it is easily actuated by the thumb or forefinger of the right hand.

Plate Carriers. Block-form Double Plate Holders, Book-form Double Slides, Changing Boxes, Daylight Loading Plate Adapters and Film Pack Adapters are all available for use with the "Fallowflex."

For prices of "Fallowflex" Cameras see next page.

Price List of "Fallowflex" Cameras.

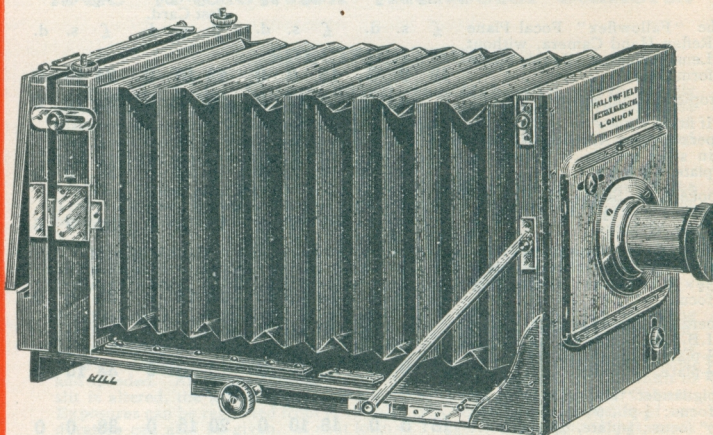
	$3\frac{1}{2} \times 2\frac{1}{2}$			$*4\frac{1}{4} \times 3\frac{1}{4}$			$\dagger 5\frac{1}{2} \times 3\frac{1}{2}$ Post Card.			$6\frac{1}{2} \times 4\frac{3}{4}$		
The "Fallowflex" Focal Plane Reflex Hand Camera, without Lens, including 3 double block- form backs.. .. .	£	s.	d.	£	s.	d.	£	s.	d.	£	s.	d.
Tropical Model, extra	12	0	0	12	0	0	12	10	0	24	10	0
If fitted with—	—			5	17	0	6	0	0	11	10	0
Goerz Syntor Anastigmat, $f/6.8$, in sunk mount, 6" focus. $\frac{1}{2}$ - plate, $8\frac{1}{4}$ " focus	—			16	0	0	16	10	0	31	0	0
Cooke Lens, Series II., $f/4.5$, $5\frac{1}{2}$ " focus; $5\frac{1}{2} \times 3\frac{1}{2}$, $6\frac{1}{2}$ " focus; $\frac{1}{2}$ - plate, $8\frac{1}{4}$ " focus	—			17	7	0	18	5	0	31	7	6
Goerz Double Anastigmat, III., $f/6.8$, $3\frac{1}{2} \times 2\frac{1}{2}$, $4\frac{1}{2}$ " focus; $\frac{1}{2}$ -plate, $5\frac{1}{2} \times 3\frac{1}{2}$, 6" focus; $\frac{1}{2}$ -plate, $8\frac{1}{4}$ " focus	17	0	0	18	5	0	18	15	0	33	5	0
Goerz Double Anastigmat Series I.B., $f/4.8$, $3\frac{1}{2} \times 2\frac{1}{2}$, $4\frac{1}{2}$ " focus; $\frac{1}{2}$ -plate and $5\frac{1}{2} \times 3\frac{1}{2}$, 6" focus; $\frac{1}{2}$ -plate, $8\frac{1}{4}$ " focus	17	0	0	18	10	0	19	0	0	33	15	0
Voigtländer "Heliar," $3\frac{1}{2} \times 2\frac{1}{2}$, $4\frac{3}{4}$ " focus; $\frac{1}{2}$ -pl., 6" focus; $5\frac{1}{2} \times 3\frac{1}{2}$, 7" focus; $\frac{1}{2}$ -plate, $9\frac{1}{2}$ " focus	18	5	0	18	10	0	20	15	0	38	0	0
Zeiss "Tessar" Lens, $f/4.5$, $3\frac{1}{2} \times 2\frac{1}{2}$, $4\frac{1}{2}$ " focus; $\frac{1}{2}$ -plate, 6" focus; $5\frac{1}{2} \times 3\frac{1}{2}$, 7" focus; $\frac{1}{2}$ -plate, $8\frac{1}{4}$ " focus	17	0	0	18	10	0	20	10	0	34	10	0
Solid Leather Cases, lined, lock and key, with handle and sling strap, to hold Camera and 6 backs, best quality	1	6	0	1	7	6	1	10	0	2	8	6
Extra Double Backs, block-form	7	6		7	6		10	0		15	0	
Extra Double Backs, book-form, best quality	12	6		12	6		15	0		1	0	0
Film Pack Adapter.. .. .	12	6		15	0		18	0		1	5	0
Mackenzie - Wishart Daylight Slide, fitted	—			16	6		1	0	0	1	3	6
Envelopes for ditto	—			1	3		1	6		2	0	

* The quarter-plate model can be fitted with a reversing hood at an extra cost of £1.

† The $5\frac{1}{2} \times 3\frac{1}{2}$ Camera can be fitted with screens and divisions for Stereoscopic work at an extra cost of £2, or supplied complete with two Goerz Dagor Lenses, $f/6.8$, 5" focus, paired, for £25 8s.

The "C.X.R." Standard Camera.

ORDINARY and TROPICAL MODELS.



This Camera, which is of the highest workmanship and the choicest selected materials, embodies all the movements which the most exacting user of this class of camera could desire. It is suitable for either Field or Studio work, and the camera has a capacity for constant hard wear which is unequalled in any apparatus of this class.

The front, which is perfectly rigid, is fitted with both vertical and horizontal sliding panels, very solidly made, so as to carry heavy lenses if necessary. The reversing back has double swing and locking screws, and is fitted with catch for dark slides.

The bellows, which are square, are of the best quality leather; focussing is by spiral pinion and diagonal rack, ensuring easy motion of the travelling base and freedom from backlash. Three best quality double book-form slides are included with each camera.

For hot or damp climates a special quality camera is built to order, brass-bound, in teak instead of mahogany.

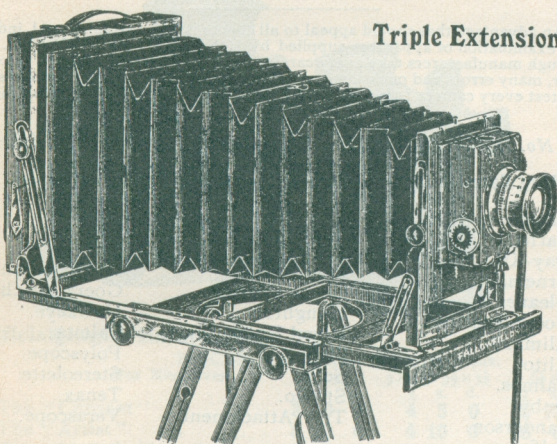
* A cheaper form of square bellows camera is made styled the "Perceptus." Complete set comprises camera, roller blind shutter, rapid rectilinear lens, tripod and one double dark slide.

PRICES.	Standard Pattern. Camera and 3 Double Dark Slides.	Extra for Brass Binding.	Tropical Pattern. Camera and 3 Double Dark Slides.	*Perceptus Outfit Complete.
$6\frac{1}{2} \times 4\frac{3}{4}$..	£8 5 0	£1 7 6	£11 11 0	£4 10 0
$8\frac{1}{2} \times 6\frac{1}{2}$..	10 5 0	1 12 6	14 5 0	6 6 0
10×8 ..	11 5 0	1 15 0	15 12 0	10 5 0
12×10 ..	13 10 0	2 0 0	18 12 0	12 0 0
15×12 ..	16 10 0	2 10 0	22 16 0	—

Foreign sizes made to order; price as nearest (larger) English sizes.

The "ALACRITY" SET.

Triple Extension.



Comprising **Triple-Extension Camera**, with all practical movements, including: Double swing back; rising, falling and cross front; swing front; triple extension; short focus; independent rise and fall to front at short focus; reversing back; two racks and pinions; brass turntable; one double book-form dark slide, with hinged division; three-fold tripod; roller blind time and instantaneous shutter, with speed indicator. Camera fitted with leather bellows, and lens as per subjoined list.

Sizes and Prices of Outfits with various Lenses.

Outfits as above Specification, with—	ORDINARY MODEL.			TROPICAL MODEL.		
	Half-plate.	Whole-plate.		Half-plate.	Whole-plate.	
Fallowfield's Rapid Rectilinear Lens, $f/8$	£3 10 0	£5 10 0		£4 10 0	£7 0 0	
Beck Rapid Symmetrical, $f/8$	3 15 0	5 17 6		4 15 0	7 7 6	
Aldis Anastigmat, $f/7.7$	4 5 0	8 0 0		5 5 0	9 10 0	
Dallmeyer "Stigmatic" $f/6$	11 7 6	18 5 0		12 7 6	19 15 0	
Goerz "Dagor" $f/6.8$	10 10 0	15 10 0		11 10 0	17 0 0	
Zeiss "Tessar" $f/6.3$	10 0 0	21 15 0		11 0 0	23 5 0	
Extra Double Dk. Slides	0 8 6	0 14 6		0 12 6	0 18 6	
Stiff Canvas Case	0 5 0	0 7 6		0 5 0	0 7 6	

Accredited Agent for Sanderson and Thornton-Pickard Field Cameras,

JONATHAN FALLOWFIELD

ROAD. LONDON W.C.

Specialist in Hand Cameras and Lenses.

An advantage that should appeal to all clients is the searching and independent examination of apparatus supplied by JONATHAN FALLOWFIELD; as although manufacturers take every care to send out their specialities in perfect order, many errors and omissions have been discovered by my practical assistants, who test every camera before being sent out, under actual working conditions.

List No. 1 of 192 pages contains full particulars and prices of the following:

Folding Cameras.

Cameo.
Carfac.
Day-Xit.
Ernemann.
Gleaner
Goerz-Anschutz.
Klimax.
Klito.
Palmos.
Ruby.
Sanderson.
Selfix.
Sybil.
Tenax.
Thornton-Pickard
Zeiss.

Magazine Cameras.

Klito.
Mascot.
Midg.

Reflex Cameras.

Britisher.
Chic.
Ensign.
Fallowflex.
Goerz Folding.
Houghton.,
Royal Ruby.
Ruby.
Soho.
Studio.
T.P. Attachment.

Roll Film Cameras.

Brownie.
Carbine.
Chic.
Ensign.
Ensignette.
Falloroll.
Hawkeye.
Kodak.
Sybil.

Stereoscopic Cameras.

Alacrity.
Cameo.
Glyphoscope.
Goerz Anschutz.
Hawkeye.
Palmos.
Polyscope.
Stereolette.
Tenax.
Verascope.

Vest Pocket Cameras.

Baby Sybil.
Bébé.
Ensignette.
Ernemann.
Kodak.
Limit.
Miniature Selfix.
Minim.
Tenax.

— Lenses. —

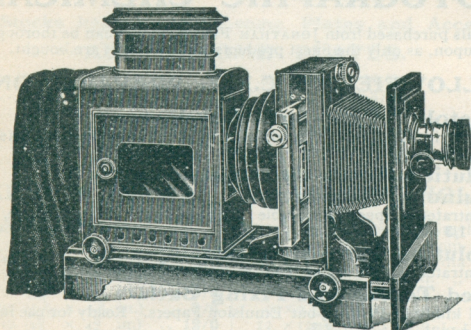
Adon.
Aeroplan.
Aldis.
Beck.
Billerbeck.
Bis-Telar.
Busch.
Carfac.

Celor.
Cooke.
Dallmeyer.
Dagor.
Dynar.
Glaukar.
Goerz.
Heliar.

Homocentric.
Isostigmat.
Neostigmat.
Protar.
Ross.
Spharostigmat.
Stigmatic.
Syntor.

Taylor, Taylor
& Hobson.
Telecentric.
Telephoto.
Tessar.
Voigtländer.
Zeiss.

ENLARGING APPARATUS.



Artificial Light Enlargers—

PRICES, with Special Enlarging Lens.
For Negatives

	4½ × 3½	5 × 4 or 5½ × 3½	6½ × 4½
	£ s. d.	£ s. d.	£ s. d.
The "Coronet"	3 0 0	4 5 0	5 15 0
The "Artist"	3 10 0	4 10 0	6 0 0
The "M.C.C. No. 3" ..	4 0 0	5 0 0	7 0 0
The "Abbeydale" ..	4 7 6	5 7 6	7 5 0
The "Special Ruby" ..	5 10 0	6 15 0	9 0 0
The "Record"	5 15 0	7 0 0	9 10 0
The "M.C.C. No. 6" ..	6 10 0	7 15 0	10 0 0

Daylight Enlargers. Box-form and Folding—

The "Clincher," 2½ × 1½ to ½-pl.,	6/0; ¼ to ¼-pl.,	7/6.
The "Pilot" .. ¼ to ¼-pl.,	9/6; ¼-pl. to 12 × 10,	15/0;
	P.C. to 12 × 8,	15/0.
The "Klito" .. ¼ to ¼-pl.,	15/0; ¼-pl. to 12 × 10,	25/0;
	½-pl. to 15 × 12,	37/6.
The "Express," ¼ to ½ or ¼-pl.,	15/0; ¼ to ¼-pl. or 12 × 10,	30/0;
	½-pl. to 12 × 10 or 15 × 12,	42/0.

Enlarging Easels, at 3/9, 6/0, 10/6, 21/0 and 30/0.

Illuminants—

- Incandescent Spirit Lamps, at 10/6, 12/6 and 15/0.
- Incandescent Gas Fittings, at 7/6 and 10/6.
- Radax Nernst Electric Lamps, at 21/0, 30/0 and 36/0.
- Electric Arc Lamps, at 50/0 and 70/0.

List No. 5 gives full particulars of above.

JONATHAN FALLOWFIELD

ROAD. LONDON W.C.

PHOTOGRAPHIC CHEMICALS.

All Chemicals purchased from JONATHAN FALLOWFIELD can be thoroughly relied upon, as only the finest products of the market are bought.

FALLOWFIELD'S C.X.R. PREPARATIONS.

Pyro-Metol or Pyro-Soda Developers.

Dry form, in Tins. Each tin contains sufficient chemicals to make 40 ozs. of Developer (20 ozs. each, No. 1 and No. 2). Per set, 1/-.

One-Solution Metol-Hydroquinone or Hydroquinone Developers.

Concentrated. Specially suitable for Snap-Shots. Sample bottle, 6d.; 5-oz. bottle, 1/3; 10-oz. bottle, 2/-.

Two-Solution Pyro-Soda Developer.

Concentrated. Per set of Two 10-oz. bottles, 1/6.

Combined Toning and Fixing Bath.

For all kinds of Printing-out Emulsion Papers. Ready for use in one solution. $\frac{1}{2}$ -pint, 1/3; pint, 2/3.

Acid-Hypo Fixing.

In Lever Top Tins with 2-oz. Measure Lid. $\frac{1}{2}$ -lb., 6d.; 1 lb., 1/-.

"J.F." Photo Mountant.

In bottles, 4 ozs., 6d.; 8 ozs., 1/- . In jars, 1 pint (about 20 ozs.), 2/-; Half gallon (about 90 ozs.), 7/-.

Full Stocks kept of "Agfa," Burroughs Wellcome, Hauff, Johnson's, Lockyer's, Lumière's and Vanguard Preparations.

Acid, Pyrogallic.

Schering's Crystal. In 1-oz. bottles, free. 1 oz. 7d., 12 oz. 6/-, 1 lb. tin, 5/10.

Ammonium, Sulphocyanide.

Bottles free. 1 oz. 3d., 4 ozs. 7d., 8 ozs. 10d., 1 lb. 1/6.

Diamidophenol or Fallidol.

Fallowfield's Amidol Equivalent (bottles free). 1 oz. 7d., 4 ozs. 1/9, 8 ozs. 3/4, 1 lb. 5/6.

Metofall.

Fallowfield's Metol Equivalent (bottles free). 1 oz. 1/6, 4 ozs. 5/6, 8 ozs. 10/6, 1 lb. 20/-.

Soda Carbonate.

Pea Crystals. Per lb. 3d., 7 lb. 1/6, 14 lbs. 2/5, 28 lbs. 4/6, 1 cwt. (cask free) 12/6.

Soda Sulphite.

Pea Crystals. Per lb. 3d., 7 lbs. 1/6, 14 lbs. 2/7, 28 lbs. 5/-, 1 cwt. (cask free) 15/-.

Soda Hyposulphite.

Pea Crystals. 7 lbs. 10d., 14 lbs. 1/6, 28 lbs. 2/6, 1 cwt. (cask free) 9/-, 5 cwt. (casks free), 42/-.

Rebate allowed to Professional Photographers.

List No. 4 gives full particulars and prices, which are the lowest possible compatible with purity.

COLOUR PHOTOGRAPHY.

Full Stocks kept of Autochrome Plates and Accessories.

AUTOCHROME PLATES.

$3\frac{1}{4} \times 3\frac{1}{4}$..	2/6
$4\frac{1}{4} \times 3\frac{1}{4}$..	3/0
5×4	..	4/6
$5\frac{1}{2} \times 3\frac{1}{2}$..	4/6
$6\frac{1}{4} \times 4\frac{1}{4}$..	7/6
$6\frac{1}{4} \times 3\frac{1}{2}$..	6/0

per box of 4 plates.

$8\frac{1}{2} \times 6\frac{1}{2}$..	14/0
9×12 c/m	..	3/0
13×18 c/m	..	7/6
18×24 c/m	..	14/0
45×107 m/m	..	2/0

per box of 4 plates.

TAKING SCREENS

(absolutely necessary).

3×3 c/m ($1\frac{1}{8} \times 1\frac{3}{8}$ in.)	..	3/0
$4\frac{1}{2} \times 4\frac{1}{2}$ c/m ($1\frac{3}{8} \times 1\frac{3}{8}$ in.)	..	4/0
6×6 c/m ($2\frac{3}{8} \times 2\frac{3}{8}$ in.)	..	5/0
9×9 c/m ($3\frac{3}{8} \times 3\frac{3}{8}$ in.)	..	7/6
12×12 c/m ($4\frac{1}{2} \times 4\frac{1}{2}$ in.)	..	12/0

SCREEN HOLDERS

FOR

3×3 c/m screen, fitting lens hoods from

$4\frac{1}{2} \times 4\frac{1}{2}$ c/m	to $\frac{5}{8}$ in. dia.,	3/6 & 4/0
6×6 c/m	to $1\frac{1}{8}$ in.	4/0 & 4/6
9×9 c/m	to $1\frac{3}{8}$ in.	5/0
12×12 c/m	to $2\frac{1}{8}$ in.	7/0 & 10/0
	to $3\frac{1}{8}$ in.	9/0

CHEMICALS.

BATH 1.—CONCENTRATED QUINOMET (for 1st and 2nd Development.

Per Bottle— $4\frac{1}{2}$ ozs., 1/0; 9 ozs., 1/6; 17 ozs., 2/6; 35 ozs., 4/6.

BATH 2. For REVERSAL, per bot., 6d. **VARNISH**, per. bot., 6d.

BINDING PAPER, applied by heat (the most perfect method).

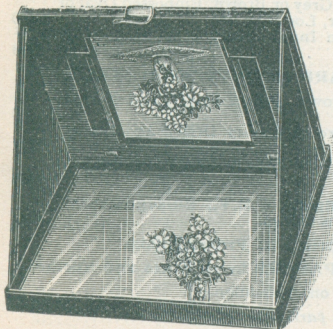
25 metres (27 $\frac{1}{2}$ yards) 2/0 50 metres (55 yards) 3/6

BINDING TONGS, 4/6.

SPIRIT LAMP, 2/6.

Sample set of strips, with cheaper form of Tongs and Lamp, 3/0.

The "PREMIER" Autochrome Display Frame.



Desk pattern frame of millboard, cloth-covered. Packs flat into containing box when closed, the base of box having a fixed mirror, to one edge of which is fixed the transparency holder. Cloth flaps at each side cut off extraneous light, and a triangular support keeps the Autochrome at a correct angle. Colour transparencies are seen to best advantage by this method.

PRICES:

Vertical.	$4\frac{1}{2} \times 3\frac{1}{2}$	2/6
"	$6\frac{1}{2} \times 4\frac{1}{2}$	3/6
Horizontal.	$4\frac{1}{2} \times 3\frac{1}{2}$	2/6
"	$6\frac{1}{2} \times 4\frac{1}{2}$	3/6
Reversible.	$4\frac{1}{2} \times 3\frac{1}{2}$	3/3
"	$6\frac{1}{2} \times 4\frac{1}{2}$	4/6

ROAD. LONDON W.C.

JONATHAN FALLOWFIELD

MOUNTS. *Artistic, New Designs.*

Owing to the limited space available, it is impossible to illustrate the various patterns; but it is hoped that the short description will convey an idea of the many varieties which are constantly being added to; sample sets will be sent to Professional Photographers in the United Kingdom for 1/6, or abroad on receipt of remittance 2/-, post-free.

SINGLE CARD MOUNTS FOR CABINET SIZE. Per 100

The Buxton. African Brown or Green Grey, Raised Border and Ornate Design, Bevelled Edges ..	10/0
The Cardiff. Silver Grey or Coffee Brown, Printed Centre and Embossed Rand ..	6/6
The Edinburgh. Matt Art Grey or Brown, Printed Border, Coloured Bevelled Edges ..	7/6
The Jersey. Art Grey, Green or Brown, Oval or Square, Embossed Colour Rand and Border ..	8/6
The Liverpool. Silver Grey or Medium Brown, Square P.M., Embossed Coloured Border ..	7/6
The Plymouth. Cloud Grey or Coffee Brown, Square P.M., Embossed Rand and Border ..	9/6
The Savoy. American Grey or Art Brown, Linen Surface, Oval or Square, Coloured Rand and Border ..	6/3
The Wright. Bronze or Sepia Brown, Oval Embossed Coloured Border, Coloured Bevelled Edges ..	8/0

SEMI-BOOKLET or PORTFOLIO MOUNTS FOR CABINET SIZE.

The Carlton. African Brown Card, Embossed Oval Rand, Art Paper Cover with Design ..	12/6
The Dunster. Nut Brown Card, Plain Sq. P.M. Deckled Edges, Loose Cover, Interleaved Moiré Tissue ..	8/0
The Embassy. Flexible Rough White or Dove Colour, Oval or Square P.M., Relief Stamped Cover ..	13/6
The Olympic. Steel Grey or African Brown, Sq. Coloured Rand and Border, Loose Folder with Border and Design ..	13/6
The Romford. Stout Inner Card, Art Grey or Brown, Embossed Oval or Square Coloured Rand and Border, Loose Folder ..	10/0
The Granville. Flexible White Linen Inner, Fancy P.M., Plate Paper Loose Cover, Gilt Deckled Edges ..	20/0

UPRIGHT SLIP-IN POST-CARD MOUNTS WITH STRUT.

The Cecil. American Grey or Art Brown, Darker Design and Border, Oval or Square ..	5/6
The Eclipse. Pearl Grey or Biscuit Brown, Darker Design and Border, Oval or Square ..	5/6
The Knaresborough. Pale Grey or New Brown, Linen Surface, Embossed Design, Square only ..	6/6

Full Stock of Mounts for Midgets, C.D.V., Enlargements and View Sizes.

Liberal Cash Discounts off above prices to Professionals.

ART MOUNTING PAPERS in all Tints and Surfaces.

Samples Free on application.

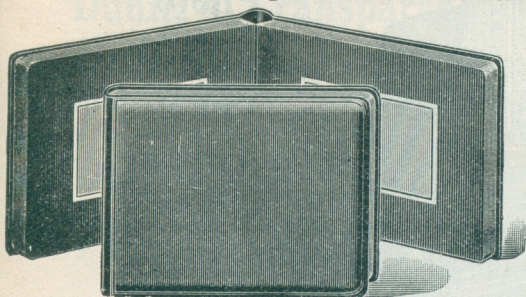
List No. 3a gives full particulars of above.

FALLOWFIELD

THE BRITISH JOURNAL ALMANAC ADVERTISEMENTS. 987

ALBUMS FOR PHOTOGRAPHS.

The Largest Selection in London.



Paste-on,
Slip-in, or
Loose-Leaf
Patterns.

Write for descriptive List No. 3B.

THE "LINFORD" LOOSE-LEAF ALBUM.

Stout linen-surfaced art paper cover, with blocked design in colour, matt art linenised stout paper detachable leaves, held together by silken cord.

In Three Colours.

	No.	Size of Leaf.	Binding.	No. of Leaves.	Price.
A.—Steel Grey Leaves and Cover.	9184 ..	6½ × 4½	.. Oblong ..	10 ..	9d.
B.—Earth Brown Leaves and Cover.	9185 ..	8½ × 7½	.. " ..	12 ..	1/3
C.—Dark Sage Green Leaves and Cover.	9186 ..	12 × 8½	.. Upright ..	12 ..	2/0

THE "NEWLYN" SLIP-IN ALBUM.

An exceptionally artistic series, with an **accurately cut** and very effective white margin round the openings. The leaves have the popular matt finish, and are in soft and pleasing shades of **green, brown or dark grey**, all one colour in a book. The colour of the cover in every case corresponds with the inside of the album. Bound in fancy cloth, lettered in gold.

For Prints	Holding	Sight size	No.	Each.
2½ × 1½	48—2 on a page	2½ × 1½	SI491	2/6
2½ × 2½	96—4 ..	2½ × 2½	SI088	8/0
3½ × 2½	24—I ..	3½ × 2½	SI089	1/9
"	48—2 ..	3½ × 2½	SI091	2/9
"	96—2 ..	3½ × 2½	SI092	3/9
4½ × 2½	24—I ..	4½ × 2½	SI093	2/0
"	48—2 ..	4½ × 2½	SI095	3/0
"	96—4 ..	4½ × 2½	SI446	3/9
4½ × 3½	12—I ..	4½ × 3½	SI375	1/6
"	24—I ..	4½ × 3½	SI101	2/0
"	48—2 ..	4½ × 3½	SI103	3/0
"	96—4 ..	4½ × 3½	SI203	5/0
"	200—4 ..	4½ × 3½	SI408	8/6
5½ × 3½	24—I ..	5½ × 3½	SI105	2/9
"	48—2 ..	5½ × 3½	SI107	4/6
"	96—2 ..	5½ × 3½	SI108	6/6
5 × 4	24—I ..	5 × 4	SI109	2/6
"	48—2 ..	5 × 4	SI111	4/0
6½ × 4½	24—I ..	6 × 4½	SI113	3/0
"	48—2 ..	6 × 4½	SI115	5/0

JONATHAN FALLOWFIELD

ROAD. LONDON W.C.



Photo Button Apparatus.

This model has been specially designed for quick working and the turning out of Photo Buttons in large quantities.

**No. 1,
FOOT MACHINE**
(Without Dies).

£4 10 0.

Cast Iron Dies—

Per set of 3 Dies and Cutter.

Sizes 22, 36 and 40 lign,
37/6 per set.

Sizes 50 and 60 lign,
42/0 per set.

**No. 2.
HAND MACHINE.**
(Without Dies).

£2 0 0.

Cast Iron Dies—

Per set of 3 Dies and Cutter.

Sizes 22, 36 or 40 lign.
32/6 per set.

Sizes 50 or 60 lign,
35/0 per set.

*Instructional Illustrated
Booklet & Price List free
on application.*

Photo Jewellery.

A splendid selection of Electro Plate, Gilt Finish and Gold-filled Brooches, Pendants, Tie Pins and Locketts always in stock, at prices from **6/6** per gross to **9/0** each.

Dunne's Transparent Colours.

Suitable for Miniatures, Lantern Slides, Photo-Buttons, Transparencies, Enlargements, Opals, Collotypes and Half-Tones.



FALLOWFIELD

The Set contains Flesh, Sepia, Cobalt Blue, Ivory Black, Rose Madder, Ruby Red, Gold, Lemon Yellow, Grey Green, Hunter's Green, Silver Grey and Purple.

NO MEDIUM REQUIRED, except for Collodion surfaces.

Per Set of 12 Colours, with complete instruction booklet ..	5/6
Specially selected Sable Brushes, per set of four	2/6
China-covered Palette, with 21 compartments	2/6
Medium for Collodion Prints, per bottle	10d.
Extra Colours, per bottle	6d., 8d., 1/0 and 1/3
Hand-made Colour Chart, showing 130 different shades of colours kept in stock	1/0

Liberal Rebate to Professional Photographers.

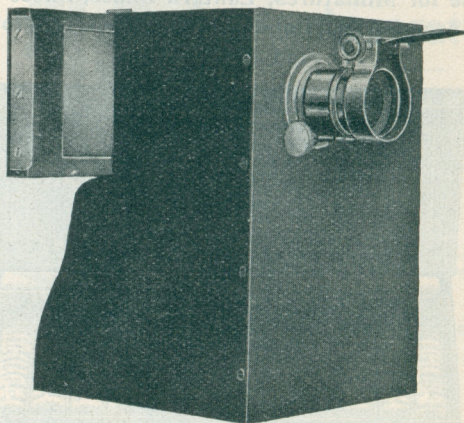
Full list of Colours in List No. 13.

JONATHAN FALLOWFIELD

ROAD. LONDON W.C.

The "POPULAR" Automatic Ferrotypes Camera. Daylight Loading.

ONE BATH ONLY.



Combined Developing and Fixing.

An Apparatus for turning out finished Ferrotypes Photographs rapidly.
Size, $2\frac{1}{2} \times 2$ ins.

The "Popular" Ferrotypes Camera has been specially designed to meet the demand for a high-class and effective instrument at a low price, taking pictures $2\frac{1}{2} \times 2$ inches, with the least possible photographic knowledge, and to enable anyone to turn out good pictures immediately at the rate of 75 per hour. The Camera can be loaded in daylight with magazine of 36 Ferrotypes Dry Plates.

By the introduction of the newest principle in this class of photography, *i.e.*, Combined developing and fixing, one bath only is required, and over-development is impossible; a perfectly developed picture is practically assured. The Camera is made of solid mahogany, substantially built; the metal parts are nickel-plated brass, and the bath German silver. It is fitted with a high-class Portrait Lens working at $f/6$, which has rack and pinion focussing and iris diaphragm. The Shutter and Lens, being nickel-plated, add greatly to the appearance of the machine.

The Camera, with enamelled water-bath, is packed in a well-made carrying box with brass fittings, forming a handsome and useful outfit.

PRICE .. £3 10 0

Three-fold Tripod Stand

"Popular" Ferrotypes Dry Plates, per magazine of 36 ..

7/6

3/0

Descriptive Booklet on application.

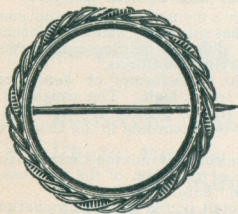
146 CHARING CROSS

CAN BE FINISHED OFF IN FORTY SECONDS.

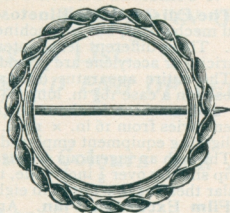
1-inch Circle, specially rimmed for loading into American Automatic and Wonder Cannon Cameras, per tube of 100	£	s.	d.
	0	3	4
Per 5 tubes = 500	0	15	6
„ 10 tubes = 1000	1	10	0
3½ × 2½ inches, per dozen	0	1	6
4½ × 3½ „	0	2	3
5 × 4 „	0	3	3
6½ × 4¾ „	0	5	0
14 × 10 „	1	0	0
Combined Developing and Fixing Solution, per bottle	0	1	0
„ „ „ „ Dry form, per tin	0	1	6

(Not Stamped-out Frames.)

FOR 1 inch CIRCLE POSITIVES.



L48. 6/6 per gross.



A48. **8/0** per gross.

Accredited Agent for—

The "Wonder Cannon" Photo Button Camera,
for "WHILE-YOU-WAIT" PHOTOGRAPHY.

Size of Picture, 1 inch circle.

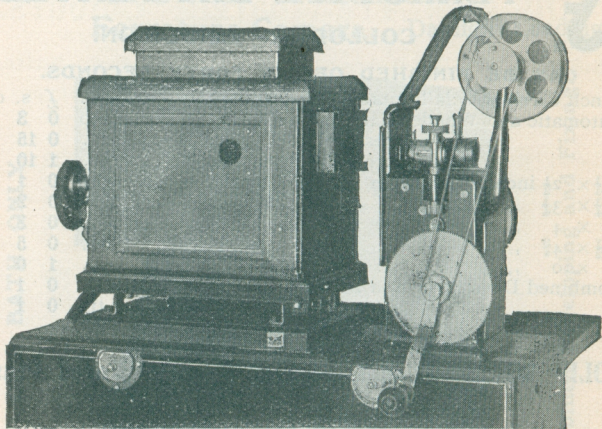
Price, with Extra Rapid Portrait Lens	£4 0 0
--	-------	---------------

Tripod Stand, **7/6** extra.

ROAD. LONDON W.C.

CINEMATOGRAPHY AT HOME.

THE EDISON HOME KINETOSCOPE.

**A Combined Motion Picture Projector and Optical Lantern.**

The Edison Home Kinetoscope is neither a toy nor a delicate and complicated mechanism, but a machine that combines simplicity, safety and effectiveness. Three different lens systems and three different lighting equipments for electricity or acetylene are provided to meet varying conditions.

The entire apparatus (except the rheostat, transformer or generator) is enclosed in a case 16 $\frac{3}{4}$ in. long, 6 $\frac{1}{2}$ in. wide and 10 $\frac{1}{2}$ in. high. The weight of the case and machine is about 20 pounds. The size of picture thrown upon the screen varies from 16 in. \times 12 in. to 64 in. \times 48 in., according to the Lens system and lighting equipment employed.

Through an ingenious arrangement of three rows of minute pictures across a strip slightly over $\frac{1}{2}$ inch wide, the equivalent of 1,000 feet of the film used in regular theatres is secured in eighty feet of the "baby" film.

Film Exchange Plan. An important detail in the scheme for marketing Edison Home Kinetoscopes is the Film Exchange Plan. By this plan, the owner of a film can exchange it for another in the same class at a cost of 1/6 to 5/0, according to the class of film.

	PRICES—	Acetylene	Nernst Lamp	Arc Light	
				110 volts.	220 volts.
Machine complete with		£ s. d.	£ s. d.	£ s. d.	£ s. d.
" " "A" Lens System		14 0 0	14 0 0	15 10 0	17 10 0
" " "AA" "		14 10 0	14 10 0	16 0 0	18 0 0
" " "B" "		14 10 0	14 10 0	16 0 0	18 0 0
" " "C" "		15 0 0	15 0 0	16 10 0	18 10 0

FILMS.—Class A 10/0, B 20/0, C 30/0, D 40/0, E 50/0, F 60/0, G 70/0, H 80/0 each.

Further information concerning the machine is embodied in a complete catalogue of Edison Home Kinetoscopes, a copy of which will be sent free upon application; or visitors to 146, Charing Cross Road, can inspect the apparatus and have its capabilities demonstrated.

FALLOWFIELD'S Sectional Lists

POST-FREE ON APPLICATION.

No.

1. Cameras, Lenses, Shutters and Tripod Stands.
 2. Plates, Papers and Useful Accessories.
 3. Mounts, Albums and Art Papers.
 4. Chemicals and Special Preparations.
 5. Enlarging Apparatus and Materials.
 6. Developing, Printing and Enlarging from Negatives.
 7. Popular Camera Booklet.
 8. Professional Photographers' Requisites.
(ONLY SENT ON RECEIPT OF TRADE CARD.)
 9. Christmas Greeting and Calendar Mounts.
(ISSUED IN OCTOBER.)
 10. Surplus Stock and Bargain List.
(ISSUED END OF FEBRUARY.)
 12. Ferrottype Materials.
 13. Photo Button Apparatus, Colours and Jewellery
for Miniatures.
 14. Optical Lanterns and Accessories.
 15. Multisecto Repeating Back for Midget Photographs.
 16. Colour Photography Requisites.
-

JONATHAN FALLOWFIELD,

CENTRAL PHOTOGRAPHIC STORES,

146, Charing Cross Road, LONDON, W.C.

ESTABLISHED 56 YEARS.

Full Particulars of everything reliable
in the Photographic Trade
will be found
in



FALLOWFIELD'S PHOTOGRAPHIC ANNUAL



AND
COMPREHENSIVE
CATALOGUE
OF
Photographic Materials,
Chemicals, and Apparatus.

TELEGRAPHIC ADDRESS:—"FALLOWFIELD LONDON."
TELEPHONE NO. 4443 CENTRAL

JONATHAN FALLOWFIELD,
CENTRAL PHOTOGRAPHIC STORES,
146, CHARING CROSS ROAD,
LONDON, W.C.

Price 1/6 Post Free.

Foreign Stamps from abroad accepted.

COPYRIGHT.]