

PREMO

IT DOES THE WORK THE EASY WAY

THERE are no intricacies—it is a matter of seconds only to make pictures with a Premo Film Pack camera. They are the simplest of all cameras to load and to operate, as any dealer will be glad to demonstrate to you. They are unusually light and compact cameras, using the only film method from which one or more films can be removed for development at any time.

In the Premo line will be found also ground glass focusing cameras taking films or plates with equal facility and cartridge film models in all the popular sizes.

Should you desire more complete information than contained in this little booklet, you will find detailed descriptions of all Premo cameras and accessories in the general Premo catalogue. This can be had at any dealer's, or we will mail it to you direct on request.

ROCHESTER OPTICAL DEPARTMENT

EASTMAN KODAK COMPANY

ROCHESTER, N. Y.



PREMO JUNIOR CAMERAS

INEXPENSIVE but well made, and reliable in every respect, these simple cameras are capable of producing good pictures in all ordinary work such as home portraiture, snap shots, average landscapes and the like.

They are all fitted with tested lenses and automatic shutters. They are substantially made, covered with imitation leather and are neat and attractive in appearance.

To make a picture with a Premo Jr. is a matter of seconds only. No focusing, no estimating of distances is necessary.

To load, open the back in any light,

drop in Premo Film Pack and close the back.

Then set the shutter for time or instantaneous exposure as required by the subject. This is accomplished by merely moving a lever up or down.

Now glance at the finder, compose the picture, press a lever and the exposure is made.

Good enough to satisfy the many grown-up amateurs who are using them, these are really ideal cameras for boys and girls, by reason of their low cost, substantial construction and extremely simple operation.

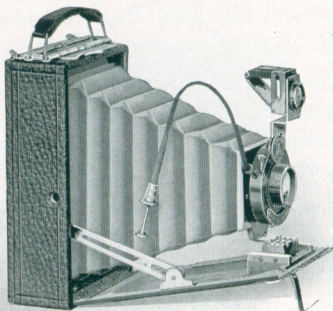
Covered with imitation leather; metal parts finished in nickel and black enamel. Each camera carefully tested for reliability.

SPECIFICATIONS

Capacity: 12 exposures without reloading. *Size of Camera:* No. 1, $3\frac{1}{8} \times 4\frac{1}{2} \times 5\frac{3}{4}$ in.; No. 1A, $3\frac{1}{2} \times 5\frac{1}{2} \times 5\frac{7}{8}$ in.; No. 3, $4 \times 5\frac{1}{2} \times 5\frac{3}{4}$ in. *Weight:* No. 1, 11 ounces; No. 1A, 14 ounces; No. 3, 20 ounces. *Shutters:* Rotary Automatic, with diaphragm stops. *Lens:* No. 1, Meniscus; Nos. 1A and 3, Meniscus Achromatic. *Finders:* Two. *Tripod Sockets:* Two.

PRICES

	No. 1 $2\frac{1}{4} \times 3\frac{1}{4}$	No. 1A $2\frac{1}{2} \times 4\frac{1}{4}$	No. 3 $3\frac{1}{4} \times 4\frac{1}{4}$
Premo Junior, as per specifications	\$2.00	\$3.00	\$4.00
Carrying Case75	.85	1.10
Premo Film Pack (12 exposures)40	.50	.70
Kodak Portrait Attachment50	.50	.50



PREMOETTE JUNIORS

IN the Premoette Juniors are offered the smallest possible practical cameras for two of the most popular sizes of amateur pictures. They are just a trifle larger than the pictures they make, and they are so easy to operate, so well manufactured, so carefully equipped and tested that the merest beginner in photography, by using a Premoette Jr., can get the best of pictures from the start.

The regular equipment is the Kodak Ball Bearing shutter and meniscus achromatic lens. In addition it is furnished with rapid rectilinear lens, and for those who want the microscopic definition of

the anastigmat at a moderate price, with Kodak Anastigmat lens, *f*.7.7. For those who want excessive speed, combined with anastigmatic definition and the highest degree of compactness, we offer the Premoette Jr. Special. This model is fitted with Bausch & Lomb Kodak Anastigmat lens, *f*.6.3, and Compound Shutter and is finished in exceptionally handsome style.

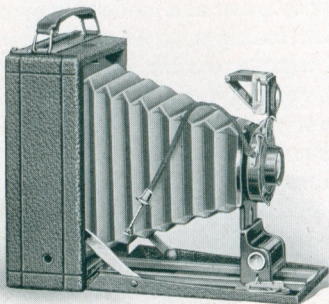
The No. 1 regular model has finger release shutter only, the No. 1A is fitted with cable release with all equipments. Illustration shows the No. 1A.

SPECIFICATIONS

Premoette Junior Regular. *Capacity*: 12 film exposures without reloading. *Dimensions*: No. 1, $1\frac{1}{2} \times 3 \times 4\frac{3}{4}$ in.; No. 1A, $1\frac{3}{4} \times 3\frac{1}{4} \times 5\frac{3}{4}$ in. *Weight*: No. 1, 12 ounces; No. 1A, 18 ounces. *Lens*: Meniscus Achromatic. *Shutter*: Kodak Ball Bearing. *Finder*: Collapsible, reversible, brilliant. *Tripod Sockets*: Two. For specifications of Premoette Jr. Special, see general Premo Catalogue.

PRICES

	No. 1	No. 1A
Premoette Jr. with Meniscus Achromatic Lens and Kodak Ball Bearing Shutter	$2\frac{1}{4} \times 3\frac{1}{4}$ \$ 5.00	$2\frac{1}{2} \times 4\frac{1}{4}$ \$ 7.00
Ditto, with Planatograph Lens	7.00	9.00
Ditto, with Kodak Anastigmat Lens, <i>f</i> .7.7	12.00	14.00
Carrying Case (Sole Leather)	1.60	2.40
Premoette Jr. Special with Compound Shutter and Bausch & Lomb Kodak Anastigmat Lens, <i>f</i> .6.3	36.00	40.00
Carrying Case (Grain Leather)	2.40	2.75
Premo Film Pack (12 exposures)40	.50
Kodak Portrait Attachment50	.50



PREMOETTE SENIOR

THE Premoette Sr. is a common sense camera without frills but with great efficiency for the general run of amateur work. It is most carefully made in every detail, but the underlying idea has been to keep the camera as simple as possible in operation and to avoid all special adjustments or features which were not essential to the making of first-class pictures under average conditions of amateur photography. It makes no pretensions to covering the field of the specialist, but it will give the best of results for those who wish to make good, clear, sharp, every-day pictures of the persons and things they are interested in.

This idea has not only enabled us to keep the price of the camera low, but also to offer a camera which, in compactness, light weight, ease of operation and all-round simplicity, has a considerable margin over the average type of camera.

The Premoette Sr. can be loaded in an instant in any light. Just open back of camera, drop in Premo Film Pack, close back and it's done.

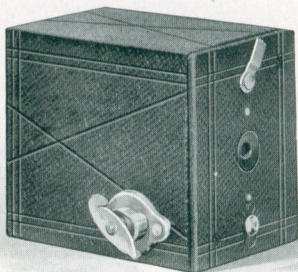
The camera is furnished with either R. R. lens or Kodak Anastigmat, *f*.7.7, being especially recommended with the anastigmat, as this provides cameras of microscopic definition for the most popular amateur sizes at unusually low prices.

SPECIFICATIONS

Capacity: 12 exposures. *Box:* Seasoned wood. *Bed and Back:* Aluminum. *Dimensions:* $2\frac{1}{2} \times 4\frac{1}{4}$, $1\frac{7}{8} \times 3\frac{5}{8} \times 5\frac{5}{8}$ in.; $3\frac{1}{4} \times 4\frac{1}{4}$, $1\frac{11}{16} \times 4\frac{1}{16} \times 5\frac{5}{8}$ in.; 3A, $3\frac{1}{4} \times 5\frac{1}{2}$. $2\frac{1}{4} \times 4\frac{1}{2} \times 7\frac{1}{8}$ in. *Weight:* $2\frac{1}{2} \times 4\frac{1}{4}$, 21 ounces; $3\frac{1}{4} \times 4\frac{1}{4}$, 22 ounces; 3A, $3\frac{1}{4} \times 5\frac{1}{2}$, 35 ounces. *Lens:* Rapid Rectilinear. *Shutter:* Kodak Ball Bearing, with cable release. *Tripod Sockets:* Two. *Finder:* Reversible, brilliant, collapsible. Automatic standard clamp. Automatic focusing lock.

PRICES

	$2\frac{1}{2} \times 4\frac{1}{4}$	$3\frac{1}{4} \times 4\frac{1}{4}$	3A $3\frac{1}{4} \times 5\frac{1}{2}$
Premoette Sr. with R. R. Lens and Kodak Ball Bearing Shutter . . .	\$10.00	\$10.00	\$12.50
Ditto, with Kodak Anastigmat Lens, <i>f</i> .7.7	15.00	15.00	17.50
Sole Leather Carrying Case . . .	2.50	2.50	3.25
Premo Film Pack (12 exposures) .	.50	.70	.80
Kodak Portrait Attachment50	.50	.50



NO. 00 CARTRIDGE PREMO

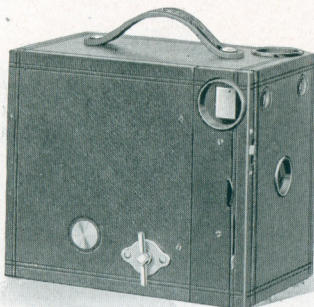
THIS little camera, while made primarily for the children, is in no sense a toy but a perfectly reliable, substantially constructed and tested camera which is being used with satisfactory results by grown-up people as well as boys and girls. It is one of the largest selling cameras on the market, and this explains its low price—big production in perfectly organized factories.

SPECIFICATIONS

For Rectangular Pictures $1\frac{1}{4} \times 1\frac{3}{4}$ inches Capacity: 6 exposures without reloading. Size of Camera: $2 \times 2\frac{5}{8} \times 3\frac{1}{8}$ in. Lens: Meniscus, $2\frac{1}{4}$ -inch focus. Shutter: Automatic for time and snap shot exposures.

PRICES

Cartridge Premo No. 00, Meniscus Lens and Automatic Shutter	\$0.75
Eastman Film Cartridge, 6 exposures, No. 3510



NO. 2 CARTRIDGE PREMO

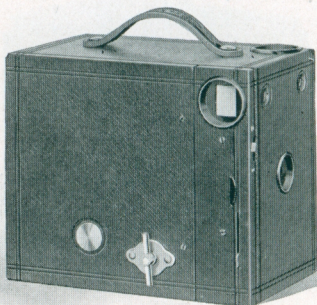
ALWAYS ready for instant action, this is a camera of the fixed focusing type, requiring no focusing or estimating of distances. It uses standard Eastman N. C. film which may be loaded, unloaded and developed in full daylight, no darkroom being necessary at any stage.

SPECIFICATIONS

For Rectangular Pictures, $2\frac{1}{4} \times 3\frac{1}{4}$ in. *Capacity:* 6 exposures without reloading. *Size of Camera:* $3\frac{1}{4} \times 4 \times 5\frac{5}{8}$ in. *Weight:* 13 ounces. *Lens:* Meniscus. *Shutter:* Eastman Rotary, with three stops. *Finders:* Two.

PRICES

No. 2 Cartridge Premo, Meniscus Lens, Eastman	
Rotary Shutter	\$2.00
Carrying Case, with shoulder strap85
N. C. Film Cartridge, 6 exposures (No. 120) . . .	20
Kodak Portrait Attachment50



NO. 2A CARTRIDGE PREMO

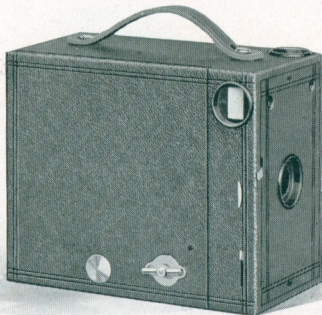
ANOTHER model of the fixed focus type, made for one of the most popular of amateur sizes— $2\frac{1}{2} \times 4\frac{1}{4}$. Uses Eastman daylight-all-the-way film, is fitted with automatic shutter and meniscus achromatic lens of the first quality.

SPECIFICATIONS

For Rectangular Pictures $2\frac{1}{2} \times 4\frac{1}{4}$ inches. *Capacity*: 12 exposures without reloading. *Size of Camera*: $3\frac{7}{8} \times 5\frac{1}{8} \times 6\frac{1}{8}$ in. *Weight*: 21 ounces. *Lens*: Meniscus Achromatic. *Shutter*: Eastman Rotary, with three stops. *Finders*: Two.

PRICES

No. 2A Cartridge Premo, Meniscus Achromatic Lens,	
Eastman Rotary Shutter	\$3.00
Carrying Case, with shoulder strap	1.10
N. C. Film Cartridge; 12 ex. (No. 116)50
Ditto, 6 exposures25
Kodak Portrait Attachment50



NO. 2C CARTRIDGE PREMO

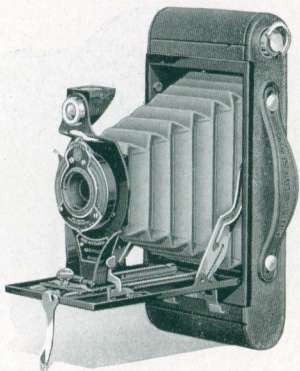
THE $2\frac{7}{8} \times 4\frac{7}{8}$ size is a new proportion for amateur pictures which was introduced last year. Its shape is so pleasing, it lends itself to such artistic composition, that we have added to the simple, inexpensive Cartridge Premos, a camera for this desirable size.

SPECIFICATIONS

For Rectangular Pictures, $2\frac{7}{8} \times 4\frac{7}{8}$ inches. *Capacity*: 10 exposures without reloading. *Size of Camera*: $3\frac{7}{8} \times 6 \times 7\frac{1}{4}$ in. *Weight*: 25 ounces. *Lens*: Meniscus Achromatic, $5\frac{1}{2}$ -in. focus. *Shutter*: Eastman Rotary, with three stops. *Finders*: Two. *Tripod Sockets*: Two.

PRICES

No. 2C Cartridge Premo, Meniscus Achromatic Lens,	
Eastman Rotary Shutter	\$4.00
Carrying Case with shoulder strap	1.25
N. C. Film Cartridge, 10 exposures (No. 130)60
Ditto, 6 exposures35
Kodak Portrait Attachment50



FOLDING CARTRIDGE PREMOS NOS. 2 AND 2A

THESE are very compact little roll film cameras with rounded ends, graceful in all their lines, and slipping readily into the pocket. Alike in general appearance and operation, they differ in the size of the pictures they make and slightly in lens and shutter equipment.

These Premos load with regular Eastman N. C. film. They are constructed on a new and very simple principle for loading and unloading in daylight, and as the film may be developed in the Kodak Film Tank, no dark room is

necessary for any step in the photographic process.

In making these cameras the aim has been to produce as simple, easily workable roll film cameras as can be made. There is no complicated mechanism or adjustment, just a simple camera for every-day work, properly equipped for amateur picture-making under all ordinary conditions where the average amateur would care to use a camera. They are neatly and carefully finished, and covered with a serviceable, attractive grade of imitation leather.

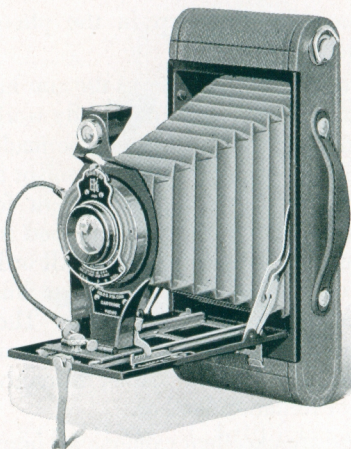
These are excellent cameras for home portraiture when fitted with Kodak Portrait Attachment.

SPECIFICATIONS

For Rectangular Pictures, No. 2 for $2\frac{1}{4} \times 3\frac{1}{4}$ pictures; No. 2A, $2\frac{1}{2} \times 4\frac{1}{4}$. *Capacity*: No. 2, 6 exposures without reloading; No. 2A, 12. *Size of Camera*: No. 2, $1\frac{1}{4} \times 3\frac{1}{8} \times 6\frac{1}{2}$ in.; 2A, $1\frac{7}{8} \times 3\frac{3}{8} \times 7\frac{7}{8}$ in. *Weight*: No. 2, 19 ounces; No. 2A, 25 ounces. *Lens*: Meniscus Achromatic. *Shutter*: Kodak Ball Bearing. *Finder*: Reversible. *Tripod Sockets*: Two. *Focusing Lock*: Automatic. *Bellows*: Black leather.

PRICES

	No. 2	No. 2A
Folding Cartridge Premo with single lens and Kodak Ball Bearing Shutter . . .	\$5.00	\$7.00
Ditto, with R. R. Lens	6.50	9.00
Cartridge Premo Carrying Case	1.00	1.10
N. C. Film Cartridge, 12 exposures (No. 116)		.50
Ditto, 6 exposures (No. 120 for No. 2; No. 116 for No. 2A)20	.25
Kodak Portrait Attachment50	.50



FOLDING CARTRIDGE PREMOS, NOS. 2C AND 3A

THE success of the 2 and 2A Folding Cartridge Premos, introduced last year, naturally led us to round out the line this year with cameras of the same general type for the two larger popular sizes of amateur pictures. The No. 2C, which we illustrate on this page, is for $2\frac{7}{8} \times 4\frac{7}{8}$ pictures. The No. 3A, similar to the 2C in every respect, excepting size, is for the favorite $3\frac{1}{4} \times 5\frac{1}{2}$ (post card) pictures.

It is only through a long perfected fac-

tory organization and production in large quantities that we are able to produce cameras of such quality at such prices. They are made of first quality material, by high class workmen, and each camera receives the same rigid tests for reliability as are applied to all cameras coming from the Eastman factories.

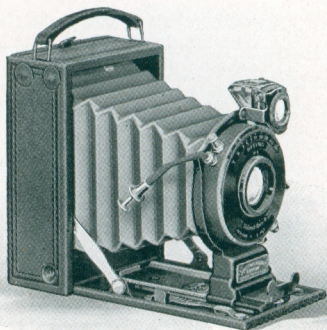
The cameras load with standard Eastman N. C. film. This is not only an assurance of the quality of the results to be obtained, but means that every process—loading, unloading, developing—can be performed in daylight, eliminating the dark-room entirely.

SPECIFICATIONS

For Rectangular Pictures, No. 2C, $2\frac{7}{8} \times 4\frac{7}{8}$ inches; No. 3A, $3\frac{1}{4} \times 5\frac{1}{2}$ inches. *Capacity:* 10 exposures without reloading. *Size of Camera:* No. 2C, $1\frac{3}{4} \times 3\frac{3}{16} \times 8\frac{5}{8}$ in.; No. 3A, $1\frac{3}{4} \times 4\frac{5}{16} \times 9\frac{5}{16}$ in. *Weight:* No. 2C, 28 ounces; No. 3A, 28 ounces. *Lens:* Meniscus Achromatic; focus, No. 2C, 5-inch; No. 3A, $5\frac{3}{8}$ -inch. Also supplied with Rapid Rectilinear near Lens, if desired. *Shutter:* Kodak Ball Bearing. *Finder:* Reversible. *Tripod Sockets:* Two. *Focusing Lock:* Automatic. *Belows:* Black leather.

PRICES

	No. 2C	No. 3A
Folding Cartridge Premo with Meniscus Achromatic Lens and Kodak Ball Bearing Shutter	\$ 8.00	\$ 9.00
Ditto, with R R. Lens	10.00	11.00
Cartridge Premo Carrying Case	1.10	1.10
N. C. Film Cartridge, 10 exposures (No. 130 for No. 2C, No. 122 for 3A)60	.70
Ditto, 6 exposures35	.40
Kodak Portrait Attachment50	.50



PREMO NO. 12

THE Premo No. 12 is really two cameras in one. And it is such a small, such a thoroughly capable one, too. It is at once a plate or a daylight loading film camera. One method may be employed as readily as the other. It's just as the user chooses.

Focusing and composing may be done by use of finder and focusing scale, or at any time, for absolute accuracy the ground glass screen is easily used with either film or plates.

The camera makes $2\frac{1}{4} \times 3\frac{1}{4}$ pictures, but in spite of its light weight and compactness, it is so cleverly constructed that it will accommodate a three-hun-

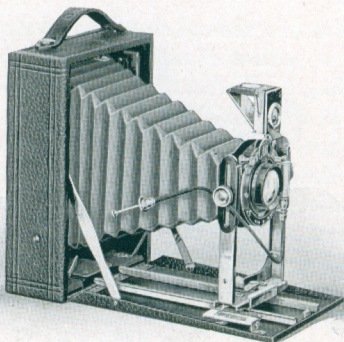
dredth of a second shutter, and the best and speediest of anastigmat lenses, including the Kodak Anastigmat *f*.6.3, and the B. & L. Ic Tessar *f*.4.5. With such equipments and its careful, accurate mechanical construction, the Premo No. 12 offers the very limit of photographic efficiency. Also supplied with Kodak Ball Bearing shutter and either Rapid Rectilinear or Kodak Anastigmat lens, *f*.7.7.

SPECIFICATIONS

Size of Picture: $2\frac{1}{4} \times 3\frac{1}{4}$. *Capacity:* 12 film or one plate exposure. *Box:* Aluminum. *Bed:* Aluminum, with special lever focusing device. *Finder:* Reversible, with revolving mask. *Tripod Sockets:* Two. *Lens:* Bausch & Lomb Kodak Anastigmat, *f*.6.3, or other lenses as per price list. *Shutter:* Optimo or Kodak Ball Bearing as per price list. *Dimensions:* $1\frac{5}{8} \times 3\frac{1}{4} \times 4\frac{5}{8}$ in. *Weight:* 24 ounces.

PRICES

	$2\frac{1}{4} \times 3\frac{1}{4}$
Premo No. 12 with Optimo Shutter and Bausch & Lomb Kodak Anastigmat Lens, <i>f</i> .6.3, $4\frac{5}{8}$ -inch focus, including Film Pack Adapter and one Plate Holder	\$45.00
Ditto, with Kodak Anastigmat Lens, <i>f</i> .6.3, $4\frac{3}{8}$ -inch focus	40.00
Ditto, with B. & L. Special Anastigmat Lens, <i>f</i> .6.3, $4\frac{5}{16}$ -inch focus	36.00
Ditto, with B. & L. Tessar, Ser. 11b Lens, <i>f</i> .6.3, $4\frac{5}{8}$ -inch focus	54.00
Ditto, with B. & L. Tessar, Ser. Ic Lens, <i>f</i> .4.5, $3\frac{1}{2}$ -inch focus	56.00
Ditto, with B. & L. Kodak Anastigmat Lens, <i>f</i> .6.3, $3\frac{5}{8}$ -inch focus, and Compound Shutter	35.00
Ditto, with Kodak Ball Bearing Shutter and R. R. Lens	15.00
Ditto, with Kodak Anastigmat Lens, <i>f</i> .7.7	20.00
Carrying Case, grain leather, velvet lined	3.25
Single Plate Holder, each50
Premo Film Pack, 12 exposures40
Kodak Portrait Attachment50



PREMO NUMBER 8

HERE is a sterling camera — one of really exceptional worth for those who wish to invest but little in an outfit for varied use.

It is both a film and a plate camera. Plates are loaded in an ordinary plate holder, films by means of the Premo Film Pack Adapter, when the camera becomes a daylight loading instrument, offering all the advantages of a film camera, and more. For with the Premo No. 8, the ground glass may be used for accurate focusing and composition at any time.

This does not mean that you have to use the ground glass, as the Premo No.

8 can be focused by scale just as any camera. But when you do want to use it, as for instance in indoor portraiture, it is always there.

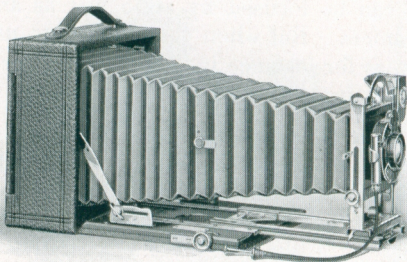
The camera is furnished with Kodak Ball Bearing shutter and Rapid Rectilinear lens and is made for the three larger popular sizes of pictures — the $3\frac{1}{4} \times 5\frac{1}{2}$, the 4×5 and the 5×7 . These proportions are exceptionally well suited for figure work, so that when fitted with Kodak Portrait Attachment, and with its ground glass for focusing, the Premo No. 8 is unusually effective for home portraiture.

SPECIFICATIONS

Capacity: 12 film or 2 plate exposures. *Box:* Kiln-dried wood, covered with leather. *Standard:* Made of metal, with rising and falling front. *Carrying Case:* Imitation leather, with compartments for holders. *Finder:* Reversible, brilliant, collapsible. *Tripod Sockets:* Two. *Lens:* Planatograph. *Shutter:* Kodak Ball Bearing with cable release. *Dimensions:* $3\frac{1}{4} \times 5\frac{1}{2}$, $2 \times 5 \times 7\frac{1}{4}$ in.; 4×5 , $2 \times 5\frac{1}{4} \times 6\frac{1}{2}$ in.; 5×7 , $2\frac{1}{4} \times 6\frac{1}{2} \times 8\frac{1}{2}$ in. *Weight:* $3\frac{1}{4} \times 5\frac{1}{2}$, 34 ounces; 4×5 , 30 ounces; 5×7 , 42 ounces.

PRICES

	4 x 5	3A $3\frac{1}{4} \times 5\frac{1}{2}$	5 x 7
Premo No. 8, with Planatograph Lens, Kodak Ball Bearing Shutter, Carrying Case and Plate Holder	\$15.00	\$16.00	\$20.00
Ditto, with Kodak Anastigmat Lens, f.7.7		21.00	
Premo Film Pack Adapter . .	1.50	1.50	2.50
Premo Film Pack (12 ex.) . .	.90	.80	1.60
Kodak Portrait Attachment . .	.50	.50	.50



PREMO NUMBER 9

THIS efficient camera is designed for the amateur who wishes an instrument of very wide scope. With its complete equipment and accurate, convenient mechanical adjustments, it is a camera of wide capabilities and superior quality.

The bellows has sufficient draw to permit the use of the single lens combination or a telephoto attachment of several magnifications. The extension plate is actuated by rack and pinion which works with exceptional smoothness and is provided with a simple locking device.

The standard is constructed of metal, it is very rigid, and incorporates a rising and falling front of great latitude.

This, in connection with the swing bed construction, makes it an easy matter to take pictures of tall buildings, and the like, without tipping the camera, with the attendant distortion. The lens board is removable and the back is reversible.

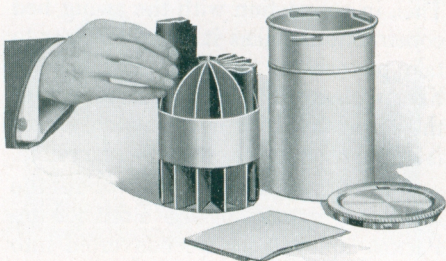
While thus suited for the work of the specialist, by use of the Premo Film Pack Adapter it can be converted into a most satisfactory daylight loading film camera for ordinary snap shot work.

SPECIFICATIONS

Capacity: 12 film or 2 plate exposures. *Box:* Kiln-dried wood, covered with fine grain leather. *Bed:* Hand polished wood, finished in black, and supplied with rack and pinion for fine focusing, and swing arrangement. *Back:* Spring catch, reversible. *Standard:* Made of metal, with rising and falling front. *Finder:* Brilliant, reversible, collapsible. *Tripod Socket:* One. *Lens:* Planatograph. *Shutter:* Kodak Automatic. *Bellows:* Black leather; draw, $3\frac{1}{4} \times 5\frac{1}{2}$, 13 in.; 4×5 , 13 in.; 5×7 , $15\frac{1}{4}$ in. *Dimensions:* $3\frac{1}{4} \times 5\frac{1}{2}$, $3 \times 7 \times 7$ in.; 4×5 , $3 \times 7 \times 7$ in.; 5×7 , $2\frac{7}{8} \times 8\frac{1}{4} \times 8\frac{1}{4}$ in. *Weight:* $3\frac{1}{4} \times 5\frac{1}{2}$, 63 ounces; 4×5 , 63 ounces; 5×7 , 76 ounces.

PRICES

	4x5	3A $3\frac{1}{4} \times 5\frac{1}{2}$	5x7
Premo No. 9, with Planatograph Lens, Kodak Automatic Shutter, Case and Holder . . .	\$32.00	\$32.00	\$37.00
Ditto, with Kodak Anastigmat Lens, <i>f</i> .7.7	37.00	37.00	
Ditto, with Kodak Anastigmat Lens, <i>f</i> .6.3 and Optimo Shutter	60.00	60.00	
Ditto, with Bausch & Lomb Kodak Anastigmat Lens, <i>f</i> .6.3 and Optimo Shutter	66.50	66.50	85.50
Premo Film Pack Adapter . .	1.50	1.50	2.50
Premo Film Pack (12 ex.) . .	.90	.80	1.60
Kodak Portrait Attachment . .	.50	.50	.50

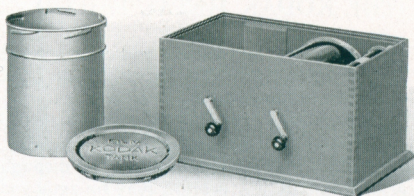


PREMO FILM PACK TANK

THE Premo Film Pack Tank assures the veriest beginner that every pack of films placed in the tank, where the simple directions are implicitly followed, will come out developed perfectly. No experience is required. It places the novice upon equal terms with the expert. So compact it may easily be carried in a suit case.

PRICES

Premo Film Pack Tank No. 1, for 12 $1\frac{3}{4}$ x $2\frac{3}{8}$ or $2\frac{1}{4}$ x $3\frac{1}{4}$ films	\$1.50
Ditto, No. 2, for 12 $2\frac{1}{2}$ x $4\frac{1}{4}$, $3\frac{1}{4}$ x $4\frac{1}{4}$, 3 x $5\frac{1}{4}$, $3\frac{1}{4}$ x $5\frac{1}{2}$, or 4 x 5 films	4.00
Ditto, No. 3, for 6 5 x 7 films	4.50
Premo Tank Developing Powders, in packages of 6,	
No. 120
Ditto, No. 225
Ditto, No. 335
Acid Fixing Powder, per 1 pound package25
Ditto, per $\frac{1}{2}$ pound package15
Ditto, per $\frac{1}{4}$ pound package10



KODAK FILM TANK

THE Kodak Film Tank not only develops roll film automatically but it does it in broad daylight, eliminating the necessity for a dark room during any part of the photographic process. It has proved that the time and temperature method of development is not only simpler than, but superior to the old methods.

PRICES

Brownie Kodak Film Tank, for use with No. 2 and No. 2 Folding Cartridge Premo cartridges, complete	\$2.75
Cover for same25
2½-inch Kodak Film Tank, for use with all Cartridges having a film width of 2½ inches or less, complete	4.00
3½-inch Kodak Film Tank, for use with all Kodak and Brownie cartridges having a film width of 3½ inches or less, complete	5.50
Flexible Rubber Tray, for 3½-inch Kodak Film Tank	1.40
Kodak Tank Developer Powders for Brownie Kodak Film Tank, per package, ½ dozen15
Ditto, for 2½-inch tank20
Ditto, for 3½-inch tank20

THE KODAK METAL TRIPOD

COMBINING light weight and compactness with exceptional rigidity, this is an ideal tripod for cameras up to 5 x 7.

Has telescoping legs of brass tubing—lower sections nicked—the upper black enameled, and should a part become inoperative through wear or accident, any section may be removed for repairs—a unique feature.

When extended each section catches and holds firmly. To close, it is necessary to press in on top catch only.

The Nos. 1 and 2 have revolving heads for attaching to camera. With this construction the camera may be swung, so as to take in the desired view without moving the tripod.

The No. 6 has folding head and folds into such a compact flat package that it can be easily carried in the ordinary pocket.

	Closed in.	Extended in.	Weight ozs.	Price
Kodak Metal Tripod,				
No. 0, 3 sections .	15½	39½	15	\$2.75
No. 1, 4 sections .	15	48½	24½	4.00
No. 1C, 4 sections	15¼	48¾	25½	3.75
No. 2, 5 sections .	13½	49½	25	4.50
No. 2C, 5 sections	13¾	49¾	26	4.25
No. 6, 6 sections .	11¾	40	24	6.50
Leatherette Case for No. 0 or No. 175
Leather carrying case for any style				2.25
Rubber Tips for use indoors for any size, per set of 3				.10

PREMO FILM PACK ADAPTERS

Size	Price
3¼ x 4¼	\$1.00
3 x 5¼	1.50
3A (3¼ x 5½)	1.50
4 x 5	1.50
5 x 7	2.50

ROCHESTER OPTICAL DEPARTMENT

EASTMAN KODAK COMPANY

ROCHESTER, N. Y.

ROBEY-FRENCH COMPANY, INC.

EASTMAN KODAK COMPANY

38 BROMFIELD ST.

BOSTON, MASS.