





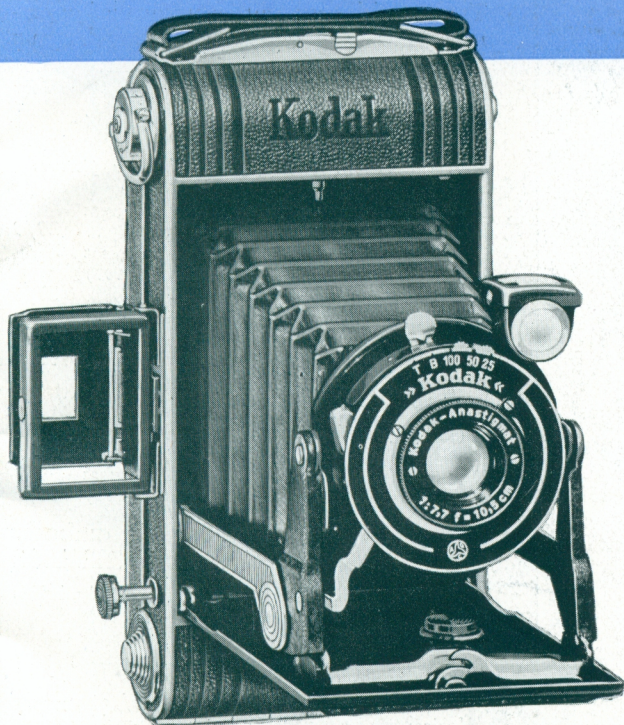
**Is your camera worthy
of the modern trends
in photography?**

**Is it worthy of your
own skill as an
amateur?**

How many people think their veteran instrument is good enough — until they see the glorious results that are to be obtained with modern Kodaks and the modern Kodak Films.

May we show you the various new Kodaks and demonstrate the entirely new standards of photographic convenience they set?





KODAK *Juniors*

Snapping is almost as quick as seeing with any model from this fine series of Six-20 and Six-16 Kodak Juniors that so personify the modern trend in camera design.

INSTANT OPENING! SIMPLE CLOSING!

A feature of these models is the "action front" that makes you instantly ready for every picture opportunity. Thumb-pressure release ensures quick easy closing.

FINE LENSES! EASY FOCUSING!

$f/8.8 \dots f/7.7 \dots f/6.3$ Anastigmat Lenses ensure clear, sharp pictures over wide range of lighting conditions. Finger-tip focussing from 5ft. to any distance simplifies adjustment, saves need for supplementary lens on many close-ups.

Kodak A.G.C. Shutters set new standards of accuracy, offer a useful range of medium speeds; modern direct vision also waist-level reflex finders; red window safety cover; two tripod sockets, cable release, hinged back for speedy loading, with safety lock, nickel-plated film rollers; compact handy size, modern design and outstanding workmanship throughout. Most models feature the new Body Release for shutter.



These models represent an unequalled opportunity for bringing your picture-making up to date for a reasonable investment.

PRICES:

SIX-20 KODAK JUNIORS

*(Loading with V620 Kodak Film for pictures
2¼ x 3½ inches)*

Six-20 Kodak Junior with f/8.8 Anastigmat lens and K2 shutter (1/25, 1/75) ... **39/9**

Six-20 Kodak Junior with f/7.7 Anastigmat lens and K3 shutter (1/25, 1/50, 1/100) with Body Release ... **57/6**

Six-20 Kodak Junior with f/6.3 Anastigmat lens and K4 shutter (1/25, 1/50, 1/100, 1/125) with Body Release ... **90/-**

SIX-16 KODAK JUNIORS

*(Loading with V616 Kodak Film for pictures
2½ x 4½ inches)*

Six-16 Kodak Junior with f/7.7 Anastigmat lens and K3 shutter (1/25, 1/50, 1/100) ... **67/6**

The majority of new Kodaks embody the TRIPLE-FEATURE BODY RELEASE

- Enables you to hold your Kodak more easily, brings new convenience and accuracy to its operation.
- Considerably reduces the risk of moving the camera during exposure—because you're holding your Kodak rock-steady in both hands.
- Gives to your Kodak *your point of view*—the logical eye-level position for picture-making.

**Remember, Kodak Film
makes every camera a
better camera.**

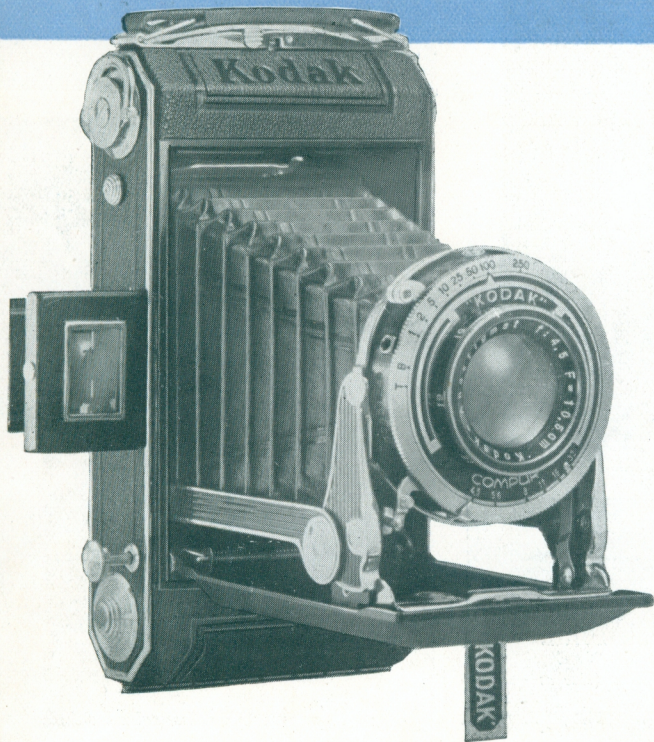


To-day photography is part of our lives; we must have snapshots of every memorable occasion. Yes, everyone wants snapshots, but they must be the finest possible snapshots. They will be, if you load with Kodak Film.

Six-20 Kodak Junior makes pictures $2\frac{1}{4} \times 3\frac{1}{4}$ inches on V620 Kodak Film (size as on right).

Six-16 Kodak Junior makes pictures $2\frac{1}{2} \times 4\frac{1}{4}$ inches on V616 Kodak Film (illustration as above).





SIX-20 SIX-16 *Kodaks*

The world's favourite fine cameras, reaching the zenith of photographic efficiency, beauty and compactness.

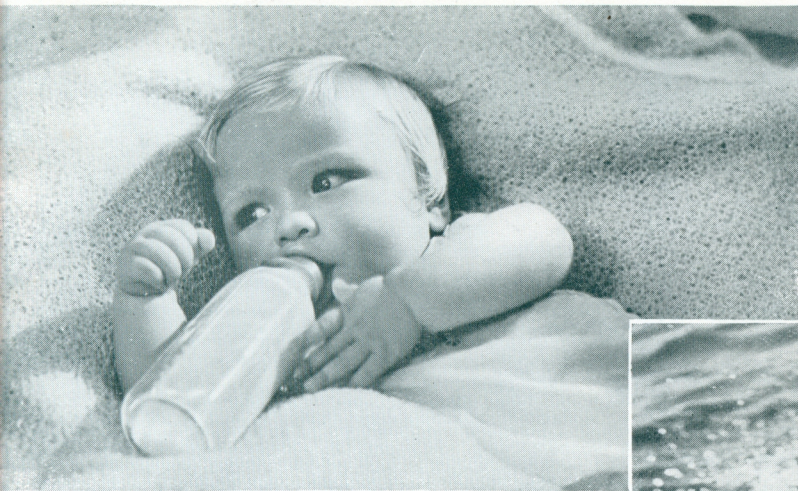
NEW CONVENIENCE IN PHOTOGRAPHY

Here you may select an instrument exactly to your needs and taste. Here you may be sure of a model with striking emphasis on photographic capability and convenience.

THEY'RE PICTURE PERFECT—

Precisely built for smooth operation and flawless results. Smartly designed on modernistic lines. And so compactly constructed that it seems hardly possible that they take pictures $2\frac{1}{4} \times 3\frac{1}{4}$ and $2\frac{1}{2} \times 4\frac{1}{4}$ inches respectively.

But words alone cannot give any idea of the beauty and efficiency of these models. You must see for yourself—actually take one into your own hands.



ALL SIX-16 KODAKS

load with V616 Kodak Film for pictures $2\frac{1}{2} \times 4\frac{1}{4}$ inches—see actual size illustration on left.

ALL SIX-20 KODAKS

load with V620 Kodak Film for pictures $2\frac{1}{4} \times 3\frac{1}{4}$ inches—see actual size illustration below.



SIX-20 AND SIX-16 KODAKS

Features include: Action Front, giving speed into picture-making action; high-grade Lens and Shutter; folding Direct Eye-level Optical Finders; Finger-tip Focussing by Revolving Lens mount; Easy Loading with Hinged Back; Efficient 1 second to 1/250 second Compur Shutter. Modern in design, rich in finish. Models you'll be proud to own.

Six-20 Kodak Vollenda, with $f/4.5$ Lens, Body

Release	£7 10 0
Six-20 Kodak, with Cooke $f/4.5$ Lens	12 0 0
Six-16 Kodak, with $f/4.5$ Anastigmat Lens	9 0 0

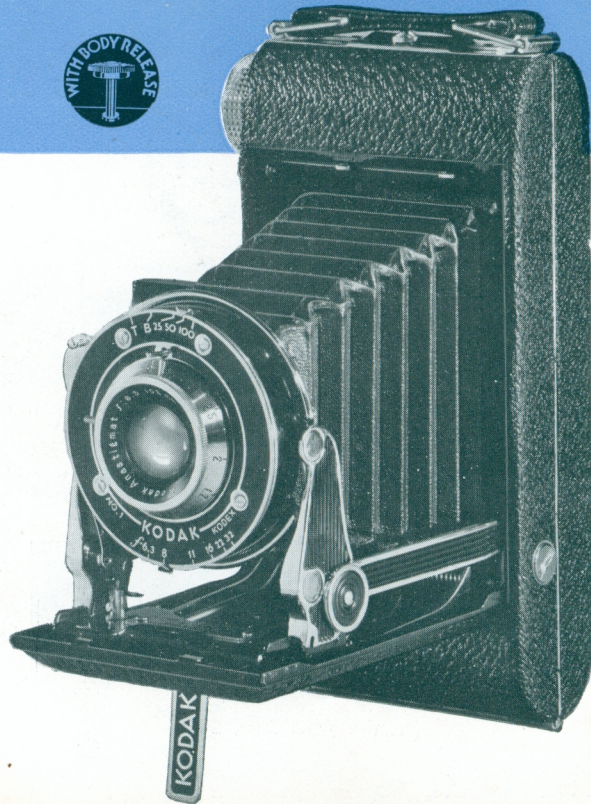
KODAK *Seniors*

New superfine instruments to meet the active demand for advanced photographic equipment.

The new shutter release is located on the body of the camera. Both hands can hold the Senior firmly as you sight through the new optical direct-view eye-level finder; you can release the shutter with a touch of the finger—this minimises possible camera movement. Sturdy action front and thumb-pressure bed release add new convenience.

Famous $f/6.3$ and $f/4.5$ Kodak Anastigmats guarantee negative sharpness. Three speeds Kodex Shutter on $f/6.3$ models; five speeds Diomatic Shutter on $f/4.5$ models. Both have new sliding film window and many other striking features. Skillfully modern in design. See the Seniors for yourself!

Six-20 Kodak Senior, with $f/6.3$ Lens	£5	2	6
Six-20 Kodak Senior, with $f/4.5$ Lens	8	0	0
Six-16 Kodak Senior, with $f/6.3$ Lens	5	12	6
Six-16 Kodak Senior, with $f/4.5$ Lens	9	0	0





KODAK *Specials*

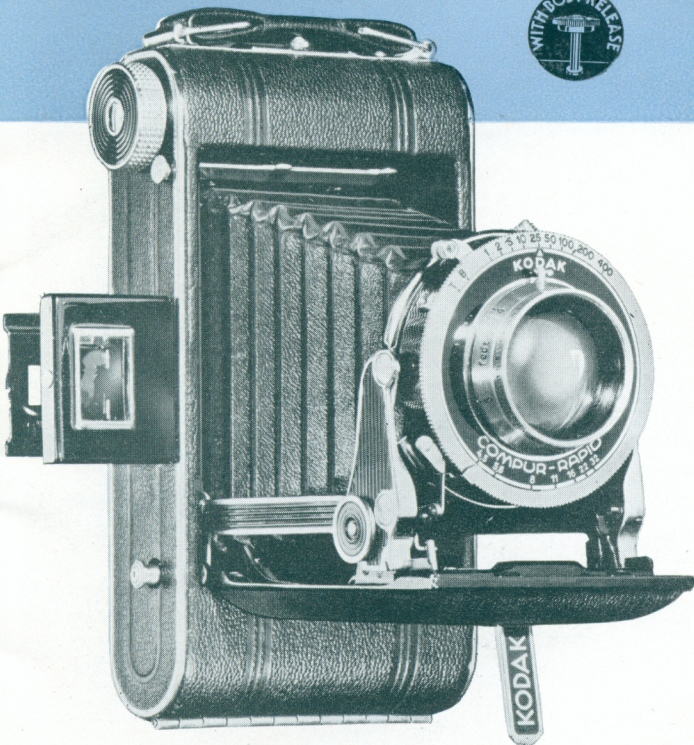
An important announcement for camera enthusiasts! Here's photographic equipment refined to the last detail, bringing users a wealth of the latest developments in camera making.

Consider these admirable features: New folding optical eye-level finder; new body shutter-release, affording the utmost in operating efficiency; pressure on a button opens the camera; one-finger bed release permits quick closing; knurled knob speeds up film winding; case and back are special quality aluminium; covering of genuine pin-seal grain leather, set off by chromium and black lacquer.

Kodak Anastigmat Special $f/4.5$ lenses, of new computation and supreme quality, precision mounted; shutters are Compur Rapid, stops $f/4.5$ to $f/32$, 1 sec. to $1/400$, with 10 sec. delayed action release, etc., etc.

PRICES:

Kodak Special Six-20, with $f/4.5$ Lens	£11	0	0
Kodak Special Six-16, with $f/4.5$ Lens	12	0	0





**The Kodak
Laboratories where
KODAK FILM
is made in
AUSTRALIA**

The Kodak organisation, with its experience of fifty years, has developed a manufacturing talent in this exacting science and produced uniformity of chemical and physical control in sensitive emulsion making which have justly earned Kodak Film the world-wide reputation of dependability. And Kodak Film — in every grade — is made in Australia, by Australian workmen and technicians, who are extremely proud of their responsibility and their service in producing the world's best photographic material for the amateur here in our own country.

Whatever kind of picture you want . . . whatever kind of camera you use . . . whether you are a beginner or an expert . . . there's a Kodak Film of a grade best suited to your particular purpose.

**Enjoy
the Thrill
of Personal Movies
with a
CINE-KODAK**

All that you most enjoy takes on new zest in movies you make yourself. And with a Ciné-Kodak these movies are as easy to make as snapshots . . . they cost practically as little . . . and the results are truly beautiful.

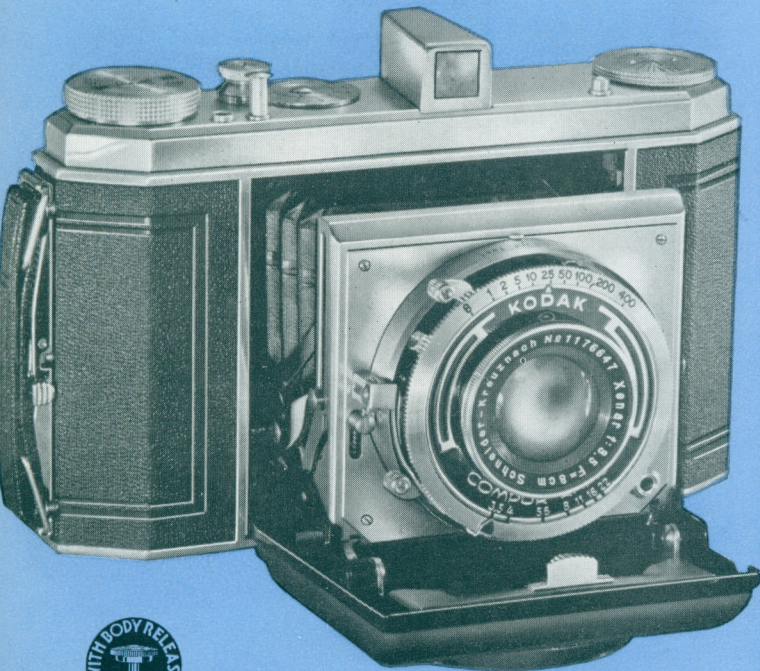
It may seem incredible that these small cameras, costing so little, can produce such gloriously beautiful movies in either black and white or perfect natural colours. Yet it is a fact—and we would welcome the opportunity to demonstrate it.

*Ciné - Kodak Eight
(8mm.) Models from £11 19 6*

*Ciné-Kodak 16mm.
Models from . . . 15 0 0*

Ask for your copy of the Ciné-Kodak and Kodascope Catalogue.





The new KODAK SUPREMA

introduces a novelty in the fact that it makes pictures of interesting square proportions, $2\frac{1}{4} \times 2\frac{1}{4}$ inches—twelve to each spool of F620 and SS620 Kodak Film. It offers all the fascinations of a precision miniature camera yet yields pictures large enough to be enjoyed without the necessity for enlarging.

Other features include: Action Front; high-grade $f/3.5$ Anastigmat Lens; Speed Compur Shutter with convenient Body Release; modern Film-winding Knob with ingenious film spacing and centring dial; counter-sunk Optical View-finder; Aluminium die-cast Body; dull chromium finish; improved Spool Holders, etc., etc.

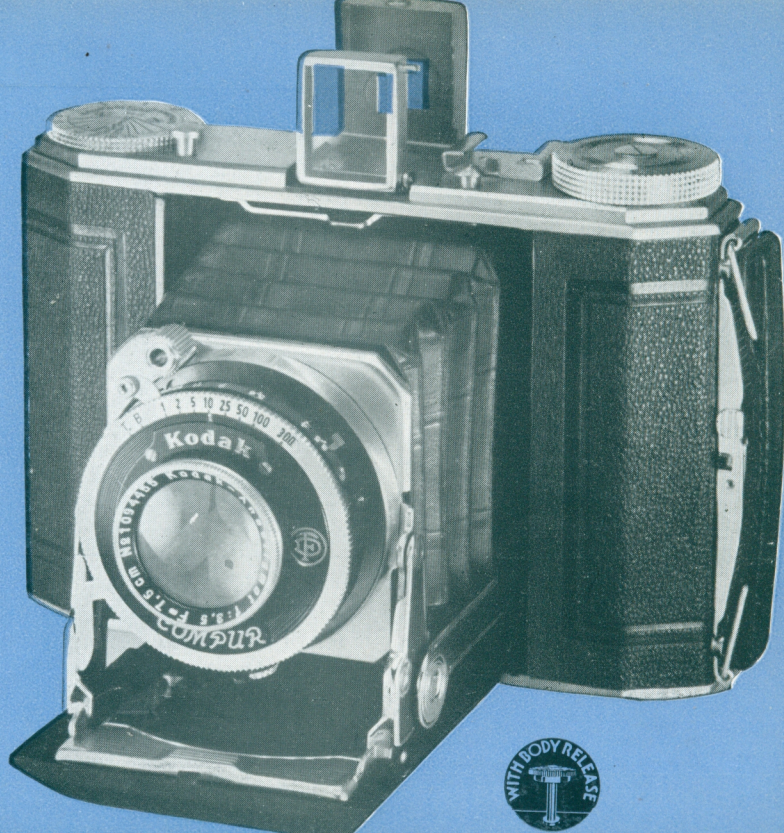
Kodak Suprema £16

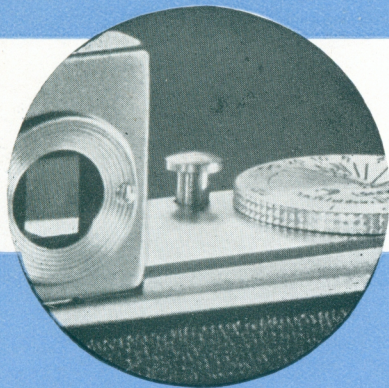
KODAK
Suprema

KODAK SIX-20 DUO, SERIES

II., is a brilliant example of modern photographic craftsmanship. A truly exquisite production! A glorious instrument to own and operate! Duo offers you all the precision of a miniature instrument yet the pictures it makes are large enough to be enjoyed as contacts—a most important point.

Duo is smartly styled throughout. Ever so convenient — amazingly efficient — delightfully compact — ruggedly built. Embodies fourteen features for improved photography, including . . .





Close-up of Duo Series II showing convenient position of the body release, close by the optical direct view-finder.

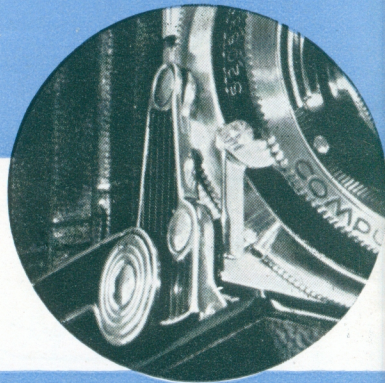
. . . including the Magic Knob!

You'll find the Knob in gleaming chromium, close to the view-finder, handy to your finger as you hold your Kodak Duo Six-20 in the logical eye-level operating position. It's the ingenious Body-release; bringing new convenience to an already simply operated Kodak. You are enabled to hold your Duo firmly and easily. The risk of moving the camera during exposure is eliminated.

. . . plus other Duo features.

Action front, making you instantly ready for every unexpected picture opportunity, with one-finger closing. Dull chromium finish throughout; aluminium die-cast body; counter-sunk optical view-finder; and new pan-safety film window.

This close-up shows the robust construction of the "action front" device, also mechanism linking shutter to body release.



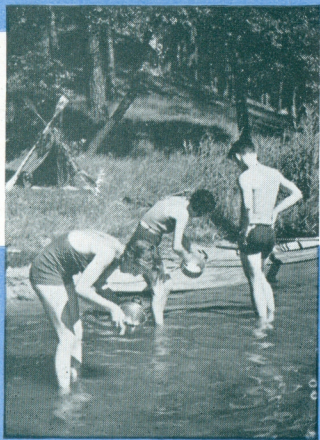
KODAK SIX-20 DUO, SERIES II.

With f/3.5 Anastigmat in Compur Shutter to 1/300 sec., **£10/10/-**

With f/3.5 Anastigmat Compur Rapid Shutter **£11/10/-**

With f/4.5 Anastigmat in Compur Shutter **£8/10/-**

Duo makes sixteen pictures at a loading. Just the right number on No. 620 Kodak Film. Specially recommended is No. F620 Kodak Panatomic Film for magnificent enlargements of glorious quality and No. SS620 Kodak Super Sensitive Panchromatic Film—completely colour sensitive and of lightning speed.



Striking and interesting pictures of every kind are a certainty with the new Kodak Six-20 Duo.

Handier than the majority of miniatures yet it yields full "album-sized" pictures.

Home or holiday, travel or speed work, Duo, Series II, is your ideal choice.

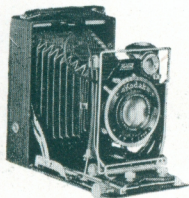
Economical—simple—efficient. In fact, Duo, Series II, is the camera you've been waiting for!



KODAK Bantam

which they have achieved to the satisfaction of beginner and advanced amateur alike.

On the opposite page are summarised the unique Kodak Bantam features which have brought them world-wide esteem and popularity.

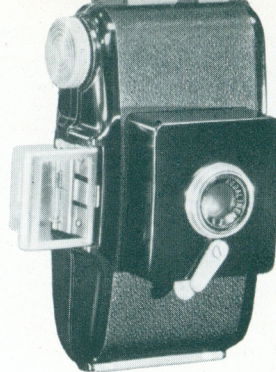


KODAK RECOMARS

Combining mechanical excellence with ability to take a great variety of negative materials, these Kodaks are admirably suited to the serious photographer. Their use is not, however, limited to the expert, for their refinements mean simple as well as varied picture taking. They have both Wire-frame eye-level and brilliant waist-level finders . . . focussing by scale and ground-glass back . . .

double-extension bellows and bed. Their lens is the Xenar Anastigmat $f/4.5$. . . a triumph in optical design . . . their shutter the famous Compur.
 Kodak Recomar 18 ($2\frac{1}{2} \times 3\frac{1}{2}$). Price **£12/-/-**
 Kodak Recomar 33 ($3\frac{1}{4} \times 4\frac{1}{4}$). Price **£15/-/-**
 (Including Film Pack Adapter and 3 single slides for cut film or plates.)

The object of this fine series of five models is to place modern miniature photography within the reach of all—an ideal



F/8 Lens

(on left)

In sturdy black case with moulded-in morocco grain surface and contrasting bright metal parts; fixed focus Kodalinear lens with snapshot shutter. Direct vision finder. Small enough to slip readily into pocket or handbag.

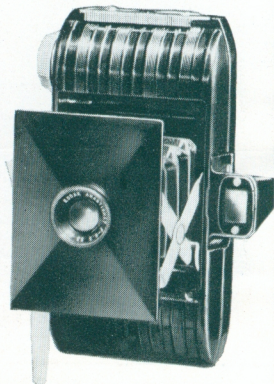
Price : 30/-

F/6.3 Lens

(on right)

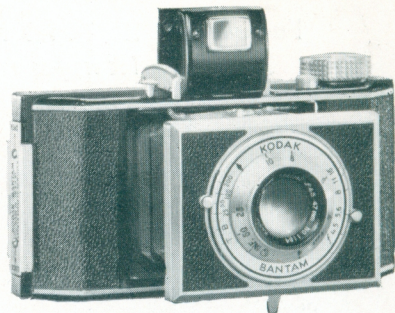
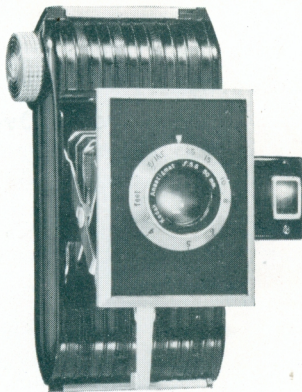
In modern streamlined all-moulded case. Tubular type optical viewfinder for ease of subject selection. Fixed focus $f/6.3$ Kodak Anastigmat lens. Dependable snapshot shutter. All the usual exclusive Bantam features.

Price : 52/6



BANTAM KODAK FEATURES:

The Bantams show pleasing economy both in first cost and in film loading (with 8-exposure Kodak Film F828 or SS828 at 1/3 per roll) — feature automatic film centring and spacing with modern knurled film-winding knob (no red window to watch) — embody smart, modern appearance and accurate construction in every detail — present new ease of operation with popular self-erecting lens front, and ease of loading with improved hinged back and ingenious self-centring spool. Be sure and inspect the Bantams before you decide.



F/5.6 Lens

(top left)

Has modern streamlined moulded case with enamel - finished aluminium die - cast front with satin-finish metal edges. f/5.6 Kodak Anastigmat lens in focussing mount 4ft. to any distance; apertures f/5.6, f/8, f/11 and f/16; shutter speeds 1/25, 1/50, 1/100, T. and B. Folding optical view - finder. All the customary Bantam features.

Price: £4/19/6

F/4.5 Lens

(top right)

Has die-cast aluminium body, covered with black morocco - grain Kodadur — a truly delightful fine quality instrument, capable, smart, compact. Has body-release for shutter and folding optical finder; improved shutter with four speeds to 1/200sec., T. and B., and all the famous Bantam features listed above.

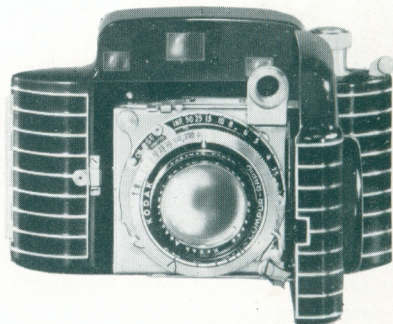
Price: £7/18/6

F/2 Lens

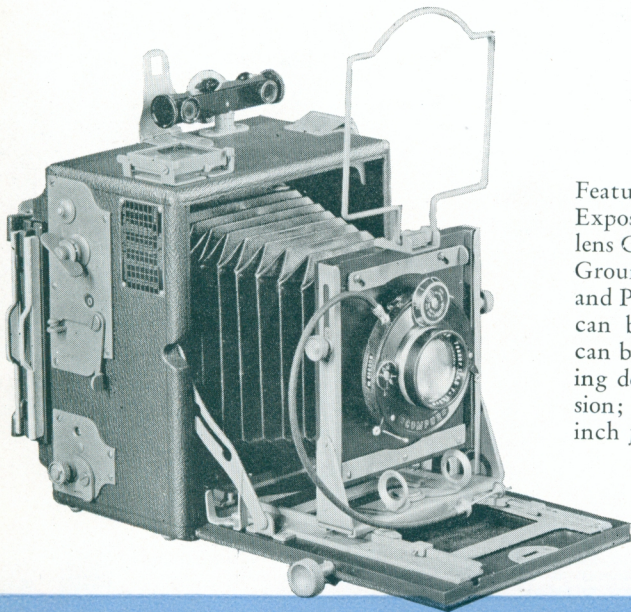
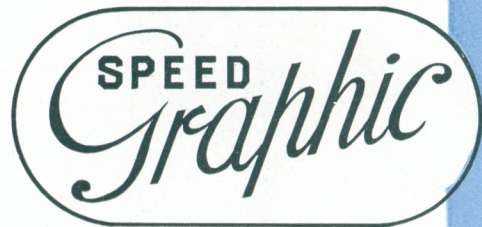
(on right)

Bantam Special comes in a fine machined aluminium and lacquer case with stainless steel fittings. f/2 Ektar Anastigmat lens of a new computation. Compur Rapid shutter to 1/500sec. Coupled range-finder of split field military type. Unique in its advanced design, precise and versatile mechanism, Bantam Special is an instrument to delight the connoisseur.

Price: £26/10/-



Famous for its Popularity with
Newspaper Photographers
the World Over.



Features include: Graflex Focal Plane Shutter giving Exposure Range from 1 to 1/1000 second; Between-the-lens Compur Shutter is a valuable supplementary shutter; Ground-glass Focussing Panel with interchangeable Film and Plate Attachment—many types of sensitive materials can be used; Wide-angle, Telephoto and Speed Lenses can be quickly changed; Sashalite Speed Gun synchronising device; Range-finder available; Long Bellows Extension; two Direct View-finders; Rising Front. With 6-inch $f/3.5$ Ross-Xpres Lens, for pictures $3\frac{1}{4} \times 4\frac{1}{4}$ inches, with Synchronised Speed Gun . . . £47/10/-
As above, with Kalart Coupled
Range-finder in addition . . . £58/10/-
As above, for $3\frac{1}{4} \times 2\frac{1}{4}$ inches . . . £51/10/-



The Camera
for more
Interesting Pictures.



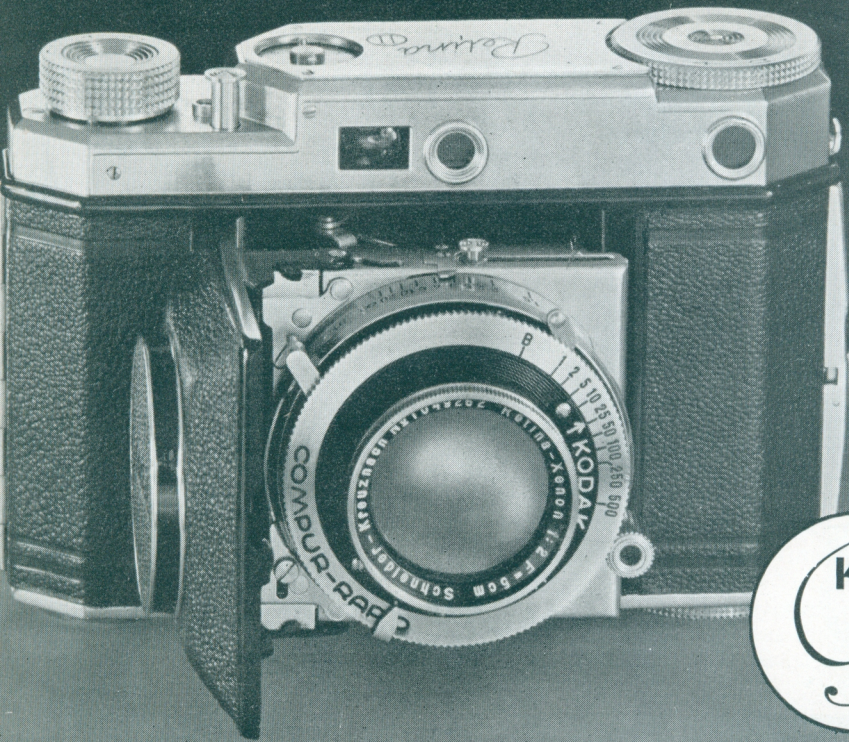
Is recognised the world over as the MASTER CAMERA. Offers Ground-glass Focussing; you see your picture . . . you know it's in focus . . . you can select exactly the right instant for exposure.

Is equipped with the world's most dependable Focal Plane Shutter—the Graflex Shutter—which transmits a greater amount of light for every shutter speed. Range of speeds to 1/1000 of a second will stop fastest action; provides for speeds down to 1/10, slow exposure of 1/5 and "time." Interchangeable equipment for Cut Film, Roll Film and Film Packs; precise yet robust construction assures you a lifetime of 100 per cent. service. For Negatives $3\frac{1}{4} \times 4\frac{1}{4}$ ins.

PRICES:

Revolving Back Graflex, Series B, with Kodak-Ross or Kodak-Cooke
f/4.5 Lens and one plate or cut Film Holder . . . £32 10 0

Details of other models on request.



RETINA II follows in main outline the sensationally popular Retina I, but possesses many added advantages.

A built-in coupled range-finder ensures needle-sharpness of image in every case, whilst the interlocked shutter release is worked by a button on the camera body, which is connected to the shutter, and also to the film-winding mechanism, in such a way that the film cannot be wound on unless the shutter is released, nor can the shutter be reset unless the film has been moved.

The optical direct vision finder is in the range-finder housing, and a revolving depth-of-focus scale indicating the range of sharp focus is provided. The finish throughout is in modern dull chromium.

KODAK
Retina II



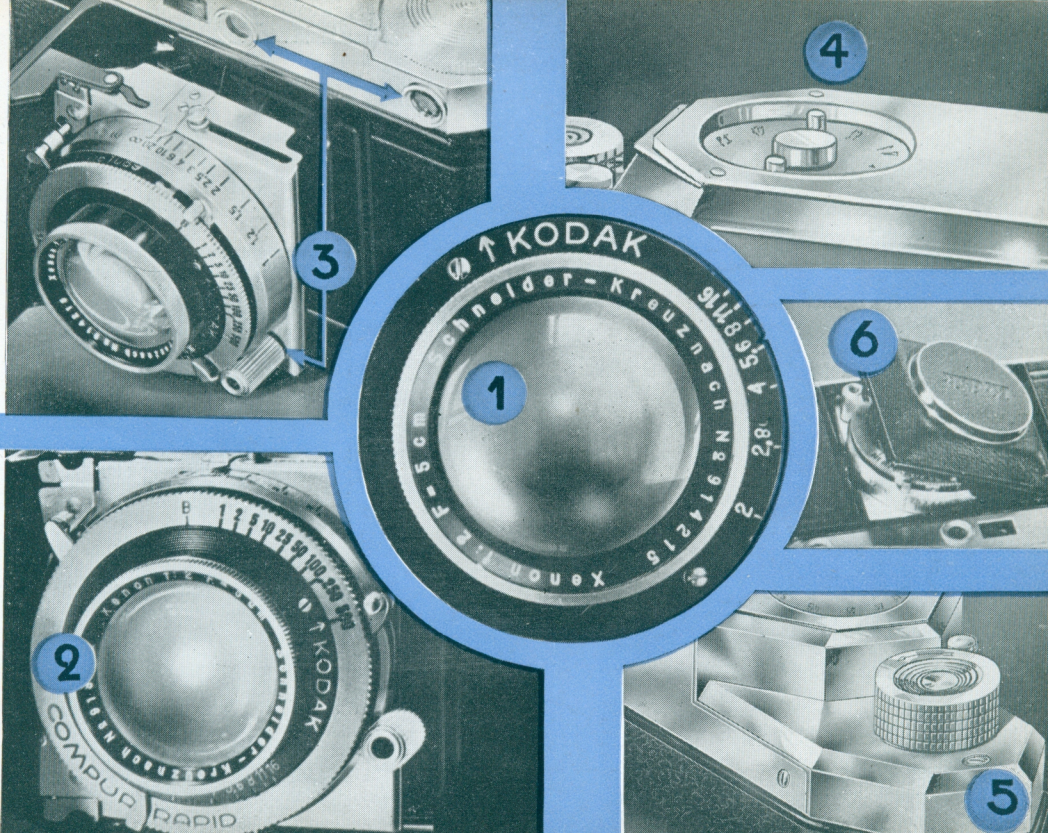
RETINA II, as also Retina I, loads with 36 exp. 35 mm. cassettes of Kodak Panatomic Film for enlargements of sensational size, or Kodak Super X and Super XX Film, films of sensational speed.

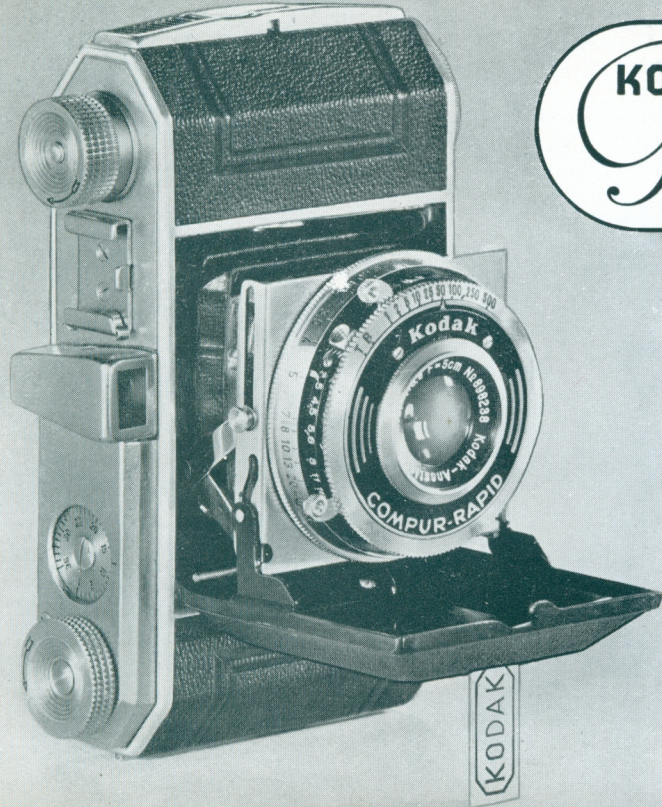
SOME RETINA II FEATURES:

1. The ideally large aperture Schneider Xenon f/2 lens, more than three times faster than an f/3.5 lens, is equal to candid photography, work by artificial light, etc.
2. Dependable Compur Rapid Shutter with speeds to 1/500 second, also thumb control focussing.
3. Advanced type of built-in range-finder directly coupled with the focussing mechanism, thus preventing out-of-focus pictures.
4. Film counting device.
5. Mechanical film transport control, preventing double exposure.
6. When the camera is closed the lens is protected from possible damage. Camera can only be closed when focus is set at infinity.

Price:

Kodak Retina II, with Compur Rapid Shutter, Xenon f/2 lens, **£27/10/-**
With f/2.8 lens, **£22/10/-**





KODAK *Retina I*



RETINA I offers just what you have been waiting for! All the fascinating advantages of work on 36 exp. 35 mm. film for exceedingly small investment!

Retina I is a Kodak product at a Kodak price. Light in weight, a pleasure to operate, and easy to use. Nothing new to learn and consequently striking pictures become a certainty.

Thousands have wanted a precision 36 exp. 35 mm. type miniature camera, but not one that was expensive or complicated. The answer is Retina—economical—efficient—simple. Thanks to its small size, you are ready for every unexpected picture opportunity—have more chances of getting those striking, happy, dramatic pictures you want.



For holiday souvenirs.



For unexpected snaps.

RETINA I is delightfully convenient. Always with you and never in the way.

Retina I means the end of posing. No need to worry if your subject moves: your Retina will snap it to the life.

Retina I represents power and precision. It is of precision construction throughout. Stop and shutter settings duplicated, and Body Release for shutter, of course.

Retina I carries all its controls within easy finger-tip range. Film counter automatically locks once enough film for the next exposure has been wound forward.

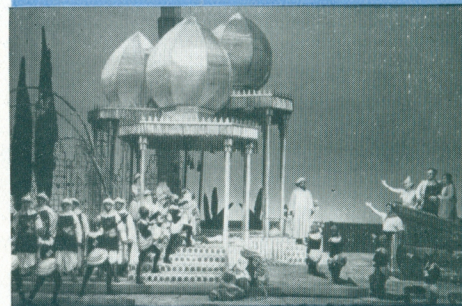
Retina I loads as easily as a Brownie, with 36 exposure cassettes—you can go right ahead without fear of running short of film.

Retina I, with $f/3.5$ lens and Compur Shutter.

Nickel finish . . . **£10/10/-**
Chromium finish, **£12/-/-**



For speed exposures.



For night photography.



MEET THE BROWNIE FAMILY

Simplicity remains the keynote to these ever-popular Box Models. Anyone, young or old, can use them successfully . . . be sure of fine pictures from the very start. You just "Load with Kodak Film . . . aim . . . shoot" and there's your picture. You'll get clear, bright snapshots you'll be proud to show!

Loading with Kodak V620 Film for pictures $2\frac{1}{4} \times 3\frac{1}{4}$ inches:
 Six-20 Brownie with etched metal front (No. 3) . . . 19/6
 Six-20 Brownie Junior with etched metal front (No.

4) . . . 14/6
 Six-20 Target Brownie (No. 6) . . . 13/6
 Six-20E Brownie Junior (No. 7) . . . 11/6
 Six-20E Brownie Super Model (No. 5) . . . 15/-
 Six-20 "Popular" Brownie (No. 8) . . . 7/9

Loading with Kodak V616 Film for pictures $2\frac{1}{2} \times 4\frac{1}{4}$ inches:
 Six-16 Brownie with etched metal front (No. 1) . . . 24/-
 Six-16 Brownie Junior, etched front (No. 2) . . . 17/6

Loading with Kodak V127 Film for pictures $2\frac{1}{2} \times 1\frac{5}{8}$ inches:
 Baby Brownie (No. 9) . . . 6/-

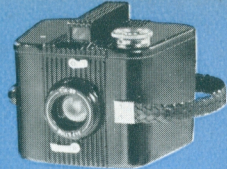
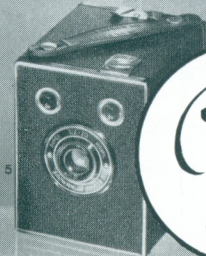
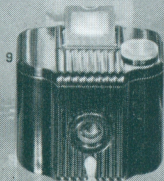
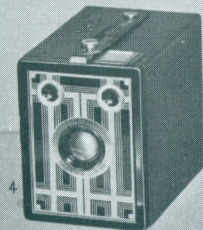
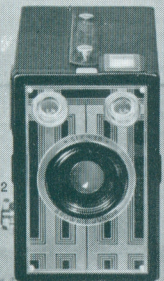
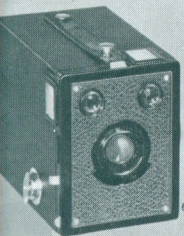
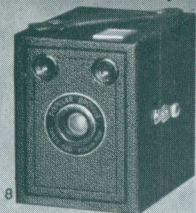
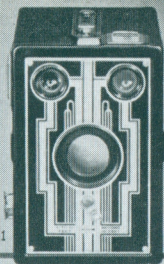
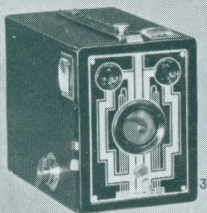
JIFFY KODAK V.P.

Smart and modern—embody ingenious button control. Touch one button—and your Jiffy pops into rigid picture-taking position. Touch another—and you have your picture. Has a light but strong body of black, moulded material, with permanent, "built-in" glossy finish and ornamental raised ribbing. Removable back. Weight, unloaded, only 10 ounces.

	Picture Size	Price
Jiffy Kodak V.P. (V127) . . .	$2\frac{1}{2} \times 1\frac{5}{8}$. . .	28/6

KODAK BANTAM

Features the new automatic film spacing mechanism, improved self-centring spool and popular pop-out front. With Doublet Lens, 30/-. With *f*/6.3 Lens, 52/6. Both load with F828 or SS828 Kodak Film.



SIX-20 BULL'S EYE

Striking in its latest styling and simple efficiency. Exceptional compactness is given through its tapering, moulded, glossy black body and gently curved back, while the rounded edges and raised ribbing provide distinctive looks and pleasant "feel". Tubular "spy-glass" viewfinder shows the picture-to-be with great accuracy and brilliance.

It's the new star amongst box-type models. Loads with V620 Kodak Film for pictures $2\frac{1}{4} \times 3\frac{1}{4}$ inches. Price 17/6.



JIFFIES &
Brownies

Kodak Carrying Cases.

Your Kodak needs one for protection and convenience in carrying, and it looks so much smarter! From 5/-.

Kodaflector.

Improved double unit with spun aluminium reflectors. Enables you to use the new PhotoFlood bulbs for delightful indoor photography. Complete with stand, twin reflectors and two 12-foot cords. Price, 58/- . Bulbs, 4/- each.

Kodak Lens Attachments.

Slip over regular camera lens to give more striking results. Portrait attachments, prices from 4/6. Colour filters from 6/6.

"How to Make Good Pictures."

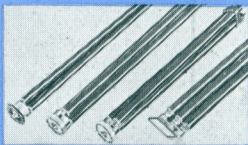
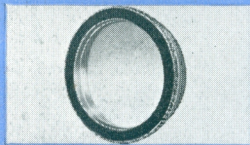
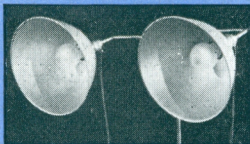
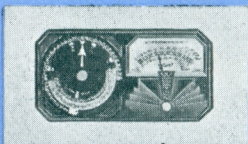
Hundreds of pages of explanation and illustration tell you how to improve your photography and develop "your own." Price, only 1/6.

"How to Make Good Movies."

Finest book on amateur movie-making ever published. Price, 10/6.

"Photography."

The famous book by Dr. C. E. Kenneth Mees, Kodak Director of Research. Thousands sold, yet demand is greater than ever. Price, 8/6.



Electric Exposure Meters.

Kodak features complete range of leading makes of electric meters. As illustrated, Weston, £7/5/-. See also the Photoscop from 59/6; Ombrux, 84/-; Tempophot, £3/10/-; Tempiphot, £5; Tempiphot Amplifier, £2/10/-; Sixtus, £6/6/-; Weston Junior, £5/10/-.

Picture Making at Night.

Try it! Simple and enjoyable with the new Kodak electric lighting aids. PhotoFlood Bulbs (left), 4/- . Sashalite Bulbs, the modern way in flashlight photography, 2/3.

Kodak Tripods.

Make possible wide range of new picture subjects. Prices from 9/-.

"The Australasian Photo-Review."

A delightful monthly—fully informative, splendidly illustrated, beautifully printed. Posted, 6/6 year.

Keep a Kodak Album.

Are your prints just loose in a wallet, mislaid in a drawer—or neatly set out in an album, titled, ready to show your friends? There's no question which is the better way to keep snapshots! Ask for details of the big range of Kodak Albums—both slip-in and paste-on varieties.

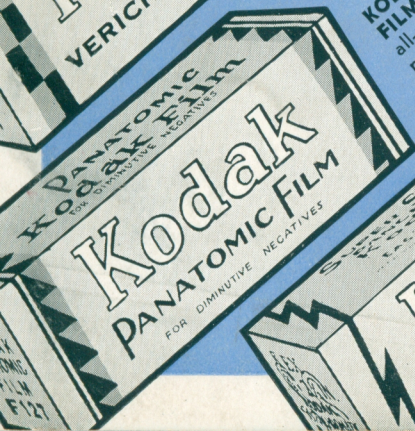
Like Kodaks and Kodak Films, Kodak Prints and Enlargements are a Kodak product, guaranteed to be of finest quality. You are sure of pictures you can show with pride when you use the Kodak Same Day Service.

This imprint appears on every snapshot for your protection.





KODAK VERICHROME FILM—the double-coated film double-guards every snapshot! It gets the picture.



KODAK PANATOMIC FILM—the world's finest all-purpose film. Fully panchromatic; ensures magnificent enlargements of glorious brilliance and detail.



KODAK SUPER SENSITIVE PANCHROMATIC FILM—ideal whenever light is poor; perfect for artificial light pictures indoors.

KODAK FILM

makes every camera a better camera

Kodak Film is made in Australia to suit Australian conditions and requirements—manufactured in accord with the latest advances in photographic research and practice.

Whatever kind of picture you want . . . whatever kind of camera you use . . . whether you are a beginner or an expert . . . there's a Kodak Film of a grade best suited to your particular purpose.

Of all Kodak Dealers and

**KODAK (Australasia)
PTY. LTD.**

Sydney, Melbourne,
Brisbane, Adelaide, Perth,
Hobart, Launceston,
Townsville, Toowoomba,
Rockhampton, Newcastle,
Ballarat