

JAMES A. SINCLAIR & Co., LTD.

PHOTOGRAPHIC and SCIENTIFIC INSTRUMENTS

OPHTHALMIC OPTICIANS



9-10, Charing Cross, LONDON, S.W.1

Telephone :
6288 REGENT

Telegrams :
ORACULUM
WESTRAND, LONDON

A.B.C. Code
5th Edition

**SINCLAIR
LONDON**

Sinclair of Charing Cross

"I think the full tide of human existence is at Charing Cross."

DR. SAMUEL JOHNSON

The feature of the past year has been the great development of amateur cinematography. So that our friends may be better able to judge the respective merits of the various cameras and projectors on the market—the best of which we stock—we have fitted up a first-class projection room in which we are always pleased to show customers the possibilities with various pieces of apparatus or the results of their work, and also to demonstrate all types of enlarging and projection apparatus.

We must thank all our old friends who have followed us to Charing Cross from the Haymarket, and particularly those from other lands, who would find us even when they had mislaid our notice regarding the change of address. We are happy to think that we have not lost a customer by the change, but are fortunate to have added many new ones. We greatly appreciate the kindly expressions we are constantly receiving from those who favour us with their orders.



The Ground Floor, 9-10 Charing Cross

Our Service. The name of Sinclair is synonymous with quality, and we are always ready to help and advise our friends concerning apparatus and materials of our own or other manufacturers. All goods advertised in this Almanac may be purchased from us.

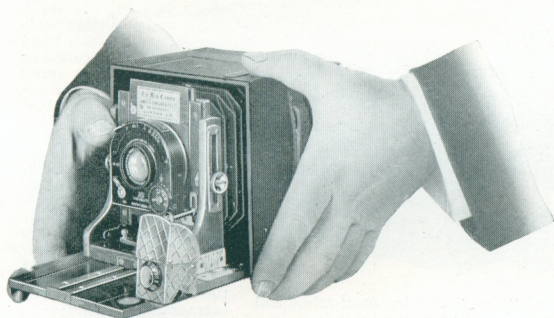
Clients Abroad. Our large export trade has been built up by careful attention to Foreign orders. We realise that any error takes a long time to rectify and every care is taken in testing apparatus before shipment.

Developing and Printing Service. Our works at Brixton are in delightful surroundings, and we aim at the best work at the lowest possible price. The Sinclair Service in this department has always been recognised as the best.

Ophthalmic Department. We have a special department for eye-glasses and spectacle fitting, and stock all the latest aids to perfect vision. 'Oculists' prescriptions have every care and attention, for we realise that a perfect fitting frame is as important as the lenses it contains.

**SINCLAIR
LONDON**

The SINCLAIR "UNA"



1929 Model
with "UNA"
Tilting
Finder,
scaled to
agree with
the Rising
Front of the
Camera.

Showing
Standard
"Una" with
normal extension
and Tilting
Finder, with
Rising Front
in Action.

Striking comment of an officer of the MOUNT EVEREST EXPEDITION
He writes:

"During the Expedition I gave up using my own Camera, and used entirely one of your 'Una' Cameras we had with us; as I was so taken with the absence of unnecessary movements, and consequent rigidity of the instrument."

Some Press Comments

"Of the 'Una' Camera as an instrument of the best design and workmanship we have occasion to speak in the highest terms. Though it is equal to the widest range of work, it is an instrument of few movements and working parts."

The British Journal of Photography.
"Simplicity of design, combined with efficiency of movements and soundness of construction, are the leading points."—Morning Post.

Although it is a good many years since the Sinclair "Una" was placed upon the market it has never been surpassed for the excellence of its workmanship, and still holds its position as the **best British Camera for Hand and Stand Photography.**

WHY THE "UNA" WINS WORLD-WIDE PRAISE

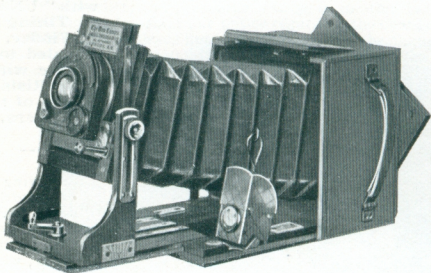
1. **Because of its workmanship.** Our aim is to make a thoroughly good instrument, perfect in every detail.
2. **Because of its simplicity.** We have introduced the movements required by the practical worker and omitted those that are rarely used and impair efficiency.
3. **Because of its design.** We have given the greatest consideration to the points usually overlooked in camera construction. The design of the rising front, swing front and revolving back is such as to ensure the maximum rigidity when they are in use.
4. **Because of its capacity.** The "Una" is capable of doing everything. It can be fitted with any lens, any form of shutter and any style of plate or film-changing mechanism.

**SINCLAIR
LONDON**

THE SINCLAIR "UNA"—*continued.*

The Standard "UNA."

ITS APPEARANCE. The Standard "Una" when closed appears as a compact box, covered with fine hard-grain morocco leather. When the camera is opened and the front is extended, as in the illustration, the inner woodwork is seen to be of fine polished mahogany with brass fittings, all finished in the best possible style. The bellows is of leather, of long extension, and is particularly deep at the front to allow of a great range in rising front movement. It will be noticed that when the camera is held in the hand ready for use, the level, finder and focussing scale are all on the left-hand side and in close proximity to one another—a small point, but one of the utmost importance in actual work. Focussing is done by means of a rack and pinion focussing screw with cross rack to prevent backlash, and this, together with the shutter release, is actuated by means of the right hand. The feature that particularly impresses anyone who has not had experience with the "Una" Camera is the extraordinary rigidity of the front, and it is this that has made the "Una" so popular amongst well-



The Standard "Una," showing front raised and tilted, and revolving back.

known experts in tele-photography, such as Captain Owen Wheeler and the late Dr. Atkin Swan. It was selected by the Royal Geographical Society for the Mount Everest Expedition. With modern anastigmat lenses the importance of a rigid front is frequently overlooked. In the Sinclair "Una" we have not sacrificed efficiency for the sake of an ounce or two in the weight.

The Sinclair "Una," instead of a detachable reversing back, has a revolving back that may be instantaneously changed from the upright to the horizontal position, even after the shutter of the dark slide is drawn and the plate is ready for use. On the revolving back is a deep hood, which may be quickly removed from the ground glass by pressing a couple of springs, should the hood not be required for any particular work.

The Sinclair "Una" front is solidly made with a firm base which can be instantaneously clamped to the baseboard. We do not use any clips or springs to hold the front when the camera is brought out to the infinity mark, because in our opinion such spring clips, although perhaps very fairly effective when a camera is new, are likely to soon wear and they militate against the rigidity that is possible when the base of the front is tightly clamped to the base of the camera.

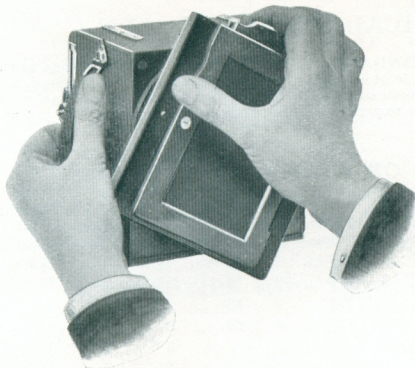
THE SINCLAIR RISING AND SWING FRONT. An important feature of the "Una" is the enormous range of Rising Front movement, and this rising front action is quite independent of the swing front. It will be found in practical work that the rising front is the first movement that the worker requires, particularly with modern anastigmat lenses. The extent of the rising front movement will be found below. The Swing Front is an action more rarely required, and with the "Una" the swing front action is a central swing, and the importance of a central swing will be greatly appreciated by all expert photographers. It permits of the foreground being rendered perfectly sharp at the same time as the more distant objects when using a large aperture lens.

**SINCLAIR
LONDON**

THE "UNA" EXTENDING BASEBOARD. The Standard "Una" has Double Extension, and this is sufficient to allow objects to be copied the same size with the lens usually fitted, and also permits the single half of combinable lenses to be used for distant photography. This extension is also of great value in tele-photographic work. A Triple Extension pattern is also made.

THE FOCUSING SCALES. These are of real ivory and divided into yards, not into an odd number of feet, which are exceedingly difficult to judge. In practice yards correspond with strides and will be found very easy to estimate.

A "DEPTH OF FOCUS SCALE," indicating the depth of focus obtained with various stops, is also fitted.



The Revolving Back of the Sinclair "Una."

THE SINCLAIR "UNA" REVOLVING BACK. This very important improvement on the old reversing back will be generally appreciated. The plate can be at once changed from the vertical to the horizontal position without removing the back of the camera, and this may be done while the plate is exposed in the slide ready for use. The back of the camera with the slide *in situ* revolves on a light-tight turn-table.

THE "UNA" DOUBLE PLATE HOLDERS. The "Una" Plate Holders differ materially from other plate holders apparently similar in design, and we have no hesitation in stating that for all but colour work

they are far superior to the best book-form slides. For colour plates we supply specially designed book-form slides fitted with improved light tight valves and draw-out shutters. The features of the "Una" Slide are:—

1. The quality of the pull out shutters, which are of the **finest hard rubber**. It is very rarely these shutters break, and they can be recommended for tropical use.
2. The valves in the plate holders where the shutters enter are made with the greatest care and ensure a more light-tight fitting than is possible with book-form slides.
3. Each plate holder is fitted with Auto-Safety Catches to obviate double exposure.

THE LEVELS. All cameras are fitted with Levels, the position selected being near the finder and focussing scale.

THE GROUND GLASS SCREEN is covered with a Focussing Hood, so arranged that it can be removed in a moment should a focussing cloth or focussing glass be preferred.

THE FINDER. An important part of the "Una" Outfit is the Sinclair Tilting Finder. With most hand cameras the finder is quite worthless when the rising front is in action, and without the rising front it is impossible satisfactorily to photograph subjects in which buildings appear. Our contention is that as good work should be done in the hand as can be done on a tripod, and this is only possible with such a finder as ours. When taking a picture the camera is held level as judged by the spirit level, the finder is then tilted to get the view desired, after which the scale on the rising front is adjusted to agree with the scale on the finder. The exposure is then made.

**SINCLAIR
LONDON**

LENSES. The best camera needs the best lens, and the best lens is of little value without a perfect camera. The late war proved that the boasted superiority of some foreign lenses was an idle myth, and we use those British made lenses whose worth has been proved.

SHUTTERS. On the smaller size cameras we use the "N.S." perfect Shutter (see Page 510). The "N.S." Shutter has not the aggravating jump in speed which is such a feature of most diaphragmatic shutters, but is at present only made in small sizes. With other makes, as fitted to the larger lenses and cameras, we advise having the speeds tested at the National Physical Laboratory.

THE TROPICAL STANDARD "UNA"

THE TROPICAL STANDARD "UNA" is exactly the same design as the regular pattern, but it is made of selected mahogany, brass screwed or bound, and polished on the outside instead of being leather covered. We do not make our cameras in teak, because our experience is that teak is quite unsuited for hot and dry climates.

DETAILS OF STANDARD MODELS

Ins.	Size closed without hood	Exten- sion	Weight with screen but without hood	Extent of rising front	Thick- ness of hood	Weight of hood
$3\frac{1}{2} \times 2\frac{1}{2}$ or $9 \times 6\frac{1}{2}$ cm.	$4\frac{3}{4} \times 3\frac{1}{2} \times 5$	$9\frac{1}{2}$ in.	1 lb. 10 ozs.	$1\frac{1}{2}$ in.	$\frac{1}{4}$ in.	$1\frac{1}{2}$ ozs.
$4\frac{1}{4} \times 3\frac{1}{4}$	$5\frac{3}{4} \times 3\frac{3}{4} \times 6$	$11\frac{3}{8}$ "	2 " 6 "	$2\frac{1}{2}$ "	$\frac{3}{8}$ "	$2\frac{1}{2}$ "
5×4	$6\frac{1}{2} \times 4\frac{1}{4} \times 6\frac{3}{4}$	$12\frac{3}{4}$ "	2 " 15 "	$2\frac{3}{4}$ "	$\frac{3}{8}$ "	3 "
$5\frac{1}{2} \times 3\frac{1}{2}$	$7 \times 4\frac{1}{2} \times 7\frac{1}{4}$	$13\frac{1}{2}$ "	3 " 12 "	3 "	$\frac{3}{8}$ "	3 "
10×15 cm.	$7\frac{3}{8} \times 4\frac{1}{4} \times 7\frac{3}{4}$	$13\frac{3}{4}$ "	4 " 2 "	3 "	$\frac{3}{8}$ "	$3\frac{1}{2}$ "
$6\frac{1}{2} \times 4\frac{3}{4}$	$8 \times 4\frac{1}{2} \times 8\frac{1}{4}$	$15\frac{1}{2}$ "	4 " 8 "	$3\frac{1}{2}$ "	$\frac{1}{2}$ "	4 "
7×5 or 13×18 cm.	$8\frac{5}{8} \times 5 \times 9$	17 "	4 " 12 "	4 "	$\frac{1}{2}$ "	$4\frac{1}{2}$ "

The "UNA" for High-power Tele-photography.

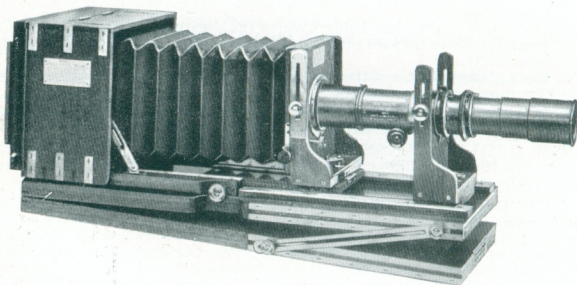


Illustration of Standard Tropical Model "Una" Camera, supplied to H.M. Government, complete with Atkin-Swan Tilting Table and Telephoto Lens.

PRICES

STANDARD MODEL "UNA" CAMERA, with "Una" Tilting Finder scaled to agree with rising front on camera, Level, Focussing and Depth of Focus Scales. Three Double Plate Holders, "N.S." Perfect or other suitable diaphragmatic Shutter and fitted with lenses as follows:—

Lenses	$3\frac{1}{2} \times 2\frac{1}{2}$ and $9 \times 6\frac{1}{2}$ cm.	$\frac{1}{4}$ -plate	5×4 or 9×12 cm.	10×15 cm. or $5\frac{1}{2} \times 3\frac{1}{2}$	$\frac{1}{2}$ -plate	7×5 and 13×18 cm.
	£ s. d.	£ s. d.	£ s. d.	£ s. d.	£ s. d.	£ s. d.
Ross Homocentric F/6.8	21 10 0	23 0 0	26 10 0	27 0 0	32 10 0	36 10 0
Ross Xpres, F/4.5 *Ross Combinable, 2 foci, F/5.5 and F/11 ..	23 10 0	26 10 0	29 0 0	32 0 0	36 10 0	41 10 0
Dallmeyer 'Perfac' F/6.3	28 0 0	31 10 0	34 10 0	37 10 0	42 0 0	46 10 0
	20 0 0	22 0 0	25 0 0	25 10 0	31 0 0	34 10 0

* These prices include Cameras with Triple Extension.

TROPICAL MODELS. Extra on above prices.

£3 10 0 £3 10 0 £4 0 0 £4 0 0 £4 0 0 £4 0 0

Triple Extension on Standard and Tropical Models, £2 0 0 extra on all sizes

Accessories for "Una" Cameras

	$3\frac{1}{2} \times 2\frac{1}{2}$ and $\frac{1}{4}$ -plate	5×4 or 9×12 cm.	10×15 cm. or $5\frac{1}{2} \times 3\frac{1}{2}$	$\frac{1}{2}$ -plate	7×5 and 13×18 cm.
	£ s. d.	£ s. d.	£ s. d.	£ s. d.	£ s. d.
Extra Double Plate Holders each	1 2 6	1 8 0	1 11 6	1 17 6	2 2 0
Extra Tropical Spanish Mahogany Plate Holders each	1 7 6	1 13 0	1 16 6	2 2 6	2 7 6
Special Book-form Plate Holders, suitable for Autochrome, Agfa, or ordinary Plates ..	2 2 0	2 7 6	2 10 0	2 15 0	3 0 0
Ditto, Tropical Model ..	2 7 0	2 12 6	2 15 0	3 0 0	3 5 6
Leather covered Film Pack Adapter each	2 5 0	2 10 0	2 15 0	3 0 0	3 10 0
Ditto, Tropical Model ..	2 15 0	3 0 0	3 5 0	3 10 0	4 0 0
Hand-sewn Leather Case, with lock and key, to hold Camera and three Slides	3 5 0	3 15 0	4 0 0	4 15 0	5 5 0
Ditto, for Camera and six slides	3 15 0	4 5 0	4 15 0	5 10 0	6 0 0
Web-sling Shoulder Strap for Camera Case ..	0 10 6	0 10 6	0 10 6	0 10 6	0 10 6
Graflex Roll Holder including fitting	4 15 0	5 5 0	5 5 0	—	6 2 6
Ditto, Tropical Model ..	6 6 0	6 16 0	6 16 0	—	7 15 0

Atkin-Swan Tilting Table, for use with high power Telephoto Lenses

Price for all sizes (illustrated on page 504) £7 10 0

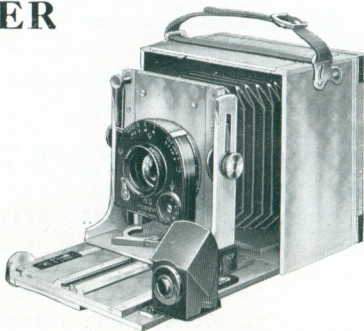
**SINCLAIR
LONDON**

The SINCLAIR "TRAVELLER UNA"

is a
Metal Camera of
the Highest Class.

$3\frac{1}{2} \times 2\frac{1}{2}$ ($9 \times 6\frac{1}{2}$ cm.)

with
Ross Combinable
Lens (2 foci)
and "N.S."
Perfect Shutter



The "Traveller Una" with normal extension
as used with the combined lens.

The "TRAVELLER UNA" is built on the same lines as our Standard and Tropical Models, and is particularly suited for Explorers and Scientists who require an instrument to stand the roughest wear and tear. It is made of Duralumin—a metal nearly as light as aluminium but without any of its drawbacks, and is very beautifully finished. It is as well adapted for hand as for stand use, and the lens fitted is perhaps the most generally useful lens made for the practical worker, because not only is it very rapid (F.5.5) but the single elements working at F.11 give a very practical telephoto effect when photographing distant objects such as mountains, etc.

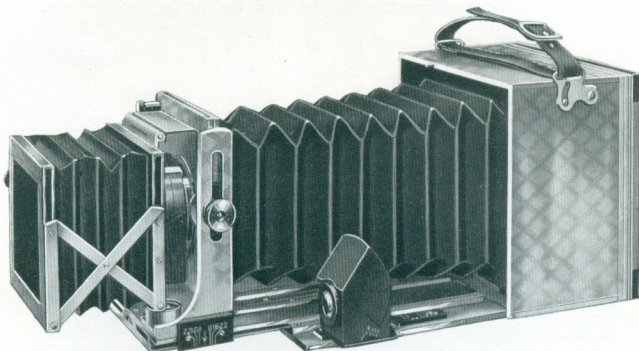
In this camera we have not hesitated to add a little extra weight so that perfect rigidity is secured when fully extended, either when copying objects the same size or if used for telephoto work. The camera is fitted with two scales, one for the combined lens working at F.5.5, and the other for the single lens working at F.11. It has a tilting finder marked down to show the view given by the combined and single lens. This finder is scaled to show the amount of foreground cut out when the rising front of the camera is in use, and a level is also fitted.

**SINCLAIR
LONDON**

The SINCLAIR

"TRAVELLER UNA"

(continued)



The "Traveller Una" with double extension and with Sinclair Lens Hood on front.

The shutter is the "N.S." PERFECT Shutter, giving the speeds required by the practical worker, viz. : from $\frac{1}{2}$ -second to $\frac{1}{100}$ th second, as well as "Time" exposures.

The "TRAVELLER UNA" with its shutter and optical equipment is only sold as a complete unit, and it cannot be supplied without lens or shutter, although other supplementary and Telephoto Lenses can be added to the outfit when desired.

The "TRAVELLER UNA" measures $4\frac{5}{8} \times 3\frac{1}{8} \times 4\frac{5}{8}$ in. ($11.7 \times 8 \times 11.7$ cm.). The extension is 10 in. (25 cm.), and the weight, including lens and shutter, is 3 lbs. (1.36 kilos).

The Price of the Outfit complete, including Lens and Shutter as described, and three Tropical Model "UNA" Plate Holders £35

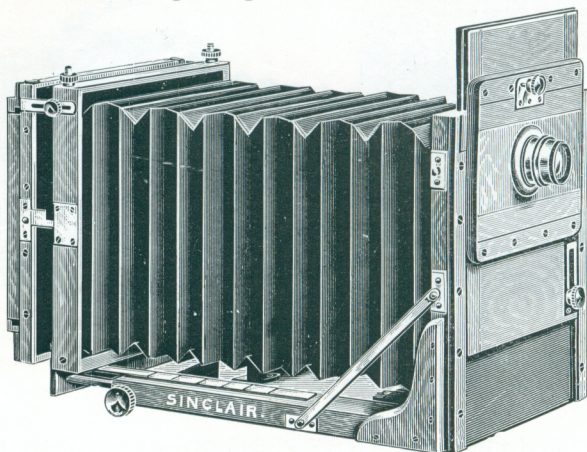
Extra for Sinclair Lens Hood as illustrated 25/-

Film Pack Adapters and other Accessories can be fitted as listed on Page 505.

**SINCLAIR
LONDON**

The Sinclair "Technical" Camera

As supplied to The War Department, His Majesty's Indian Government ;
The New South Wales Government ; The Crown Agents for the Colonies ;
Southern Rhodesia ; The Siamese Government ; The Egyptian
Government ; Engineering Works and Scientific Institutions.



This Camera in its general character is of the square bellows long-focus type but has a number of improvements in design, making it the most efficient of its class and particularly suitable for Professional, Technical and Scientific work. It is made of the best seasoned Spanish mahogany, and great care is taken to ensure parallelism between front and back, an important matter with modern anastigmat lenses.

THE RISING AND FALLING FRONT. As will be seen from the illustration there is a very **great rising front movement**, and there is an **equally great falling movement**. This is attained by means of a moving panel at the back of the rising front, and which may be adjusted so that either a great rise or a great fall is secured.

THE SWING BACK. A central swing is provided, and the arms are as long as possible, so that the greatest range of movement may be obtained. By means of the clamping screws on the top of the camera a side swing can also be obtained for special work.

	6½ × 4½			8½ × 6½			12 × 10			15 × 12		
	£	s.	d.	£	s.	d.	£	s.	d.	£	s.	d.
Camera and 3 Double Dark Slides	24	0	0	30	0	0	40	0	0	50	0	0
Ditto, Brass Bound	27	10	0	34	0	0	45	10	0	56	10	0
Extra Double Slides .. each	2	10	0	2	15	0	4	10	0	6	0	0
Extra Brass Bound Double Slides „	3	0	0	3	5	0	5	5	0	6	17	6

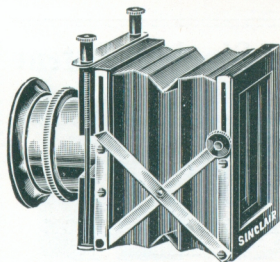
Messrs. COLE, MARCHANT & MORLEY, Ltd., Prospect Foundry, Bradford, write:—
“We congratulate you on the careful attention shown to a number of details which are often omitted.”

JNO. B. SCRIVENOR, Esq., Government Geologist, Federated Malay States, writes:—“The whole-plate camera gives every satisfaction.”

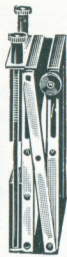
**SINCLAIR
LONDON**

The "SINCLAIR" Adjustable LENS HOOD and SCREEN HOLDER

PREVENTS FOGGY NEGATIVES



Lens Hood open.



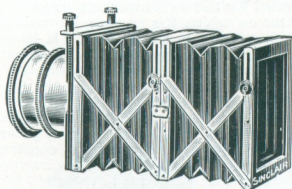
Closed.

A Typical Testimonial

Sheffield,
March, 1920.

Lens Hood to hand. It is a beautiful piece of workmanship and very efficient. I have already used it with great success.

W. F. A.



Hood with Extension for Tele-photography.

No one who has once used the bellows hood of this form is likely to expose another plate without it. It enormously increases the brilliancy of the result and permits of photographs being taken against the sun, which would otherwise be impossible. This new type of Sinclair Lens Hood is not only adjustable as regards the extension, but also in its range for fitting to the hoods of lenses, and consequently the same lens hood will fit a large number of lenses, and the vice grip permits of it being securely held in position. Each hood is also fitted with a spring screen holder, permitting screens to be instantly changed or removed. The same screen will therefore suffice for any lenses which the hood will fit, and the necessity for special caps or screw-in cells is obviated. In cases where lenses are fitted to shutters or are in sunk mounts, a small metal hood to screw into the front cell of the lens may be necessary, which we, or any maker or dealer, would supply.

Size	Adjustable to fit Hood of Lenses from	Extension up to	Size closed	Price	KI, KII or KIII Screen to fit	
No. 00	1 to 1½ ins.	2¾ ins.	3 × 2½ × 1	25/-		5/9
No. 1	1½ to 2 ins.	2½ ins.	3½ × 3 × 1½	30/-		7/6
No. 2	2 to 2½ ins.	3 ins.	4½ × 3½ × 1½	35/-		9/6
No. 3	2½ to 3 ins.	4 ins.	5½ × 4½ × 1½	57/6		13/9
	Opening					
Large Hood	5½ × 4	5¾ ins.	5½ × 7 × 1½	60/-		—

For Studio and Kine' Cameras.

Collapsible Extensions may be had for Nos. 1 and 2 and these increase the lengths when open to 4½ and 6 inches respectively. Such extensions cost for No. 1 20/- and No. 2, 25/-. They are very advisable for Tele-photography.

**SINCLAIR
LONDON**



THE SHUTTER

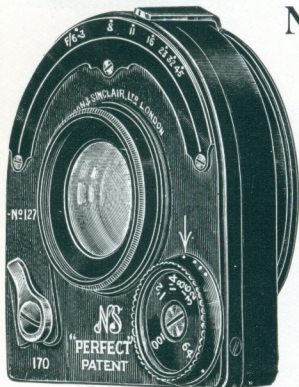
Newman-Sinclair Patent

The only Shutter giving the range of speeds required by the pictorial worker.

NO VIBRATION

GREAT EFFICIENCY

SMOOTH IN ACTION



The "N.S." Patent Shutter has been designed for the use of workers who want a shutter on which the engraved speeds approximate to the actual ones. It is well known that the types of diaphragmatic shutters in general use are very defective in this matter. They are made by the thousand, and dial plates cast or engraved in quantity are fitted without any relation whatever to the real speeds. As a general rule Continental shutters are so constructed

that there is a very rapid transition from slow to quick speeds, quite irrespective of the markings on the shutter, and we may get an alteration in the speed from 1/8th to 1/70th of a second with only the slightest movement on the speed dial.

The Accuracy of the "N.S." Shutter. Unless the photographer has a shutter of which the speeds are approximately correct, bad work is inevitable. The "N.S." Patent Shutter is so constructed that the above-mentioned defect is non-existent and in its manufacture we have endeavoured to give those speeds that are the most useful for the practical photographer. Moreover **each shutter is individually tested for speed, and each dial plate is separately engraved.** The speeds we set the shutter at are those that work conveniently with the lens apertures. The shutters are engraved 1/2, 1/4, 1/8, 1/16, 1/32, 1/64 and 1/100th of a second; and the speeds that will be found of the greatest use to the hand camera worker are 1/8, 1/16 and 1/32 of a second, the latter being fast enough for all ordinary moving street traffic. Intermediate speeds between any of the two engraved speeds can be given if desired, and also "Time" exposures. The shutter may be opened for focussing without the necessity for changing the speed dial.

The Efficiency of the "N.S." Shutter. The "N.S." Accurate Shutter has surprisingly high efficiency owing to the fact that it opens and closes quickly and remains full open for the greater proportion of the indicated exposure.

The Release. The Shutter has a hand release which is in the most convenient position for work when the shutter is fitted to a camera, the fingers being then below the baseboard and the thumb used to actuate the release. An Antinous release may be used, and this is screwed into a hole just below the hand release pin. This convenient position does not get in the way of any movements and allows such a release to be shut up inside the camera when desired.

No.	Size	Iris Aperture	for Lenses	Price
No. 0	Size	7/8"	1-1/16"	£4 0 0
No. 1	"	1"	1-3/8"	4 0 0

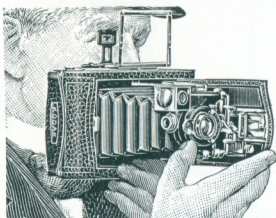
When Lenses are ordered from us fitted to this Shutter there is no extra charge for fitting. The charge for fitting customers' own lenses ranges from 17/6 to 30/-

**SINCLAIR
LONDON**

The Sinclair Frame Finder and View Meter

Saves Plates, Films and Disappointment

The unreliability of many camera finders has led to our designing new types of frame finders, which have many advantages over those previously placed upon the market.



THE SINCLAIR FRAME FINDER can be kept on or removed from the camera as desired.

THE SINCLAIR FRAME FINDER is collapsible and goes into a very small space.

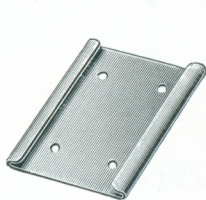
THE SINCLAIR FRAME FINDER can be accurately adjusted to show the picture taken by any camera with a large range of lenses.

THE SINCLAIR FRAME FINDER is equally suitable for the professional with a large stand camera, as for the amateur with a Vest Pocket Kodak.

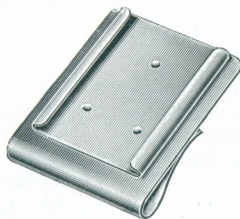
THE SINCLAIR FRAME FINDER permits of the camera being used at the eye level—the natural position.

THE SINCLAIR FRAME FINDER consists of a collapsible frame made of brass, attached to a base in the form of a lazy tongs that has at the other end a folding sighting plate. When closed, it measures $3" \times 1\frac{1}{2}" \times \frac{1}{4}"$ and weighs only 2 ozs.

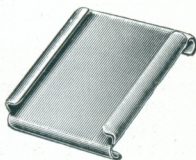
The finder is designed to slide into a variety of fittings that are made for all types of camera. When not in use, the folded finder can be kept on the camera or, if more convenient, carried in the waistcoat pocket.



No. 1



No. 2



No. 3

THE SINCLAIR FRAME FINDERS are made in two types and each type can be had with 3 kinds of fitting.

Type 1. For plates and films of the normal proportions, such as $\frac{1}{4}$ -plate, 5×4 in., $\frac{1}{2}$ -plate, etc.

Type 2. For long narrow pictures such as given by the V.P.K.; No. 1A, and 2C Kodaks, and postcard size.

The fittings are as follows:—

No. 1. Standard fitting, for cameras with wooden bodies to which the fitting can be screwed, and into which the Finder fits.

No. 2. Spring fitting, for attachment to metal cameras such as Folding Brownies, Carbiners, Ensigns and V.P.K. Models B and III.

No. 3. Special fitting for use on the original Vest Pocket Kodak, no screwing being necessary.

Price:

Either type of Finder with one fitting of either number 6/-
Extra fittings Nos. 1 and 3 .. each 9d. Extra spring fittings No. 2 .. each 1/6

**SINCLAIR
LONDON**

The Sinclair Walking Stick Stand

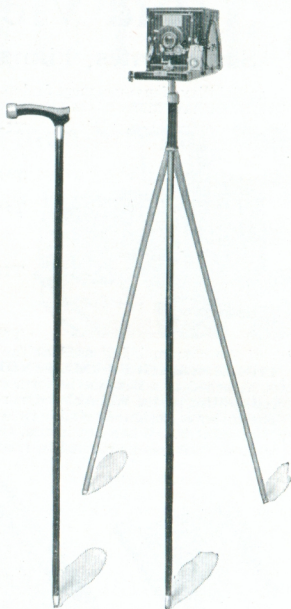
Walking stick stands have been designed from quite early photographic days, but the trouble with most of them is that they are not walking sticks if they are stands, and not stands if they are walking sticks.

THE SINCLAIR WALKING STICK STAND combines very successfully the functions of both walking stick and hand camera tripod.

From the illustration it will be seen that it is certainly a walking stick, and the view of the stick opened out as a stand is not likely to deceive anyone as to its value in this direction. It certainly is not meant for large or heavy cameras such as reflex instruments, but rather the small folding film pattern type, and it is quite satisfactory for use with our small "Una" Cameras. It will be seen that there is a ball and socket joint, and this will be found of considerable use when working on uneven surfaces.

The stand as a walking stick measures $36\frac{1}{2}$ inches in length, and weighs $14\frac{1}{2}$ ounces.

Price £1 15 0



The Sinclair Focussing Magnifier for Reflex Cameras

The advantages of a Reflex Camera are greatly increased by the use of a pair of magnifying lenses fitted in the hood, for not only is a larger image seen in the ground glass screen, but all extraneous light is shut out.

The Sinclair Magnifier has been designed to close up inside the Focussing Hood and to spring into position directly this is opened for use.

It can be fitted to most types of Reflex.

Price with Spherical Lenses, including Fitting

27/6

Send power of Reading Glasses when ordering.

**SINCLAIR
LONDON**

THE



UNIPOD



Invaluable for users of clockwork driven Ciné Cameras and greatly appreciated by hand-camera workers who wish to satisfactorily give the slower exposures.

It is impossible to do justice to this well designed Unipod in our illustration. In appearance it is like a walking-stick when closed, beautifully finished with black enamel and is $37\frac{1}{2}$ inches long. It extends to 68 inches and is absolutely rigid. It is constructed of drawn steel tube and the inner section is nickel-plated with dull finish as a protection against rust. The black wooden knob is removed for use, and it can be supplied with $\frac{1}{4}$ inch Whitworth or Continental Screw Thread. When a camera is on this Unipod it can easily be held rigidly for exposures of $\frac{1}{4}$, $\frac{1}{8}$ and $\frac{1}{16}$ second.

Weight $1\frac{1}{2}$ lbs.

HERBERT G. PONTING, ESQ., F.R.G.S., writes: "I am delighted with the Unipod. It will be indispensable to me in the future."

Price

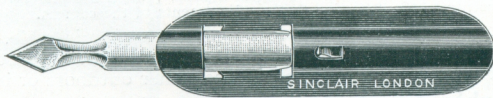
..

..

35/-

Leather Sling Handle for carrying Unipod on arm, $1/9$ extra.

The Pen Print Trimmer and Retouching Lancet



This admirable little instrument should be kept in every photographer's pocket, or on the workroom table. For trimming prints, scraping out defects, or inserting a high light it is the best tool available, and being made of the finest steel, it can be sharpened to a keen edge.

Nickel Boxes containing 20 Lancets

Price, including Holder .. per box

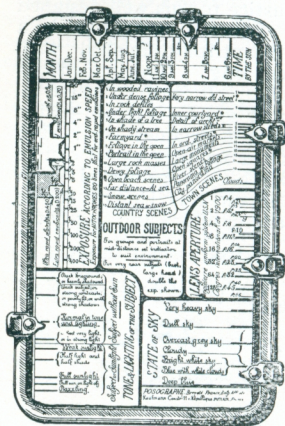
1/6

SINCLAIR
LONDON

THE POSOGRAPH

is a Simple Automatic Calculator
for Solving the Problem of Correct
Exposures in Photography.

Silver Medal, Turin International Exhibition, 1923



OBVERSE FOR OUTDOOR SUBJECTS.

exposure time indicated by the point on the cursor corresponding to the speed of the emulsion used. The simplicity of this operation prevents those mistakes which so frequently arise when making an exposure, after the photographer has had to concentrate his attention to the adjustments of the camera.

Without previous experience the photographer is able, by its means, to Calculate the Exposure required to get a Perfect Negative, whatever may be the conditions either outdoors or indoors.

Invaluable for Autochromes and Colour Plates.

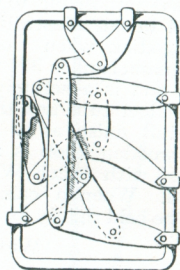
"We have at different times tested most of the exposure meters on the market, but we have not hitherto come across one so complete or ingenious as the 'Posograph.' A number of tests have been made with this instrument, and in each case the results, as checked from the negatives of the subjects photographed, have been within the recognised limits."—*English Mechanics*.

"..... besides dealing admirably with outdoor subjects, it provides a really bold endeavour to grapple with the difficulties of classifying indoor subjects."

British Journal of Photography.

PRICE of the "POSOGRAPH" complete with
pocket case

10/6



THE INTERIOR MECHANISM.

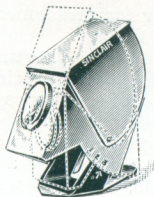
posures required for any class of subject with plates of different speeds. The instrument measures 5 $\frac{1}{2}$ in. by 3 $\frac{1}{2}$ in. by $\frac{1}{4}$ in., and weighs 3 $\frac{1}{2}$ ounces. It is supplied in a small flat pocket case.

ITS ADVANTAGE.—All that is necessary is to set the pointers to the appropriate positions, and then read the exposure time indicated by the point on the cursor corresponding to the speed of the emulsion used.

SINCLAIR
LONDON

THE Sinclair "Una" Finder

A REFLECTING FINDER FOR ACCURATE HAND CAMERA WORK



opened out at right angles to the base-board, and in the position that it occupies when in use.

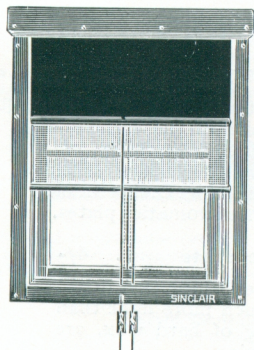
When we ourselves fit this finder to a camera, we mark a scale on the side of the finder which is in agreement with a scale also marked on the rising front of the instrument. When holding the camera level, the finder is tilted to show the view desired on the plate or film, the position of the pointer on the scale at the side of the finder is noticed, and the rising front on the instrument is raised to agree with it.

PRICE **10/6 each**

Including fitting to Camera and scaling the finder and rising front **21/-**

When ordering say the size of the plate for which the finder is required.

The Sinclair Dark Room Blinds AT ONCE CONVERT ANY ROOM INTO A DARK ROOM



"One of the things which we all at times make, or get made for ourselves, usually in a rather unsatisfactory way, has been done very well indeed by Mr. J. A. Sinclair's firm."—*British Journal of Photography.*

This consists of a well-made varnished wood frame with two grooves, in which red and black blinds travel, and when both are down no trace of white light is admitted. We make the fitting to any measurements, and we shall be pleased to give quotations on application. Screws are supplied with the blind, and all that is necessary is to screw it to the window frame.

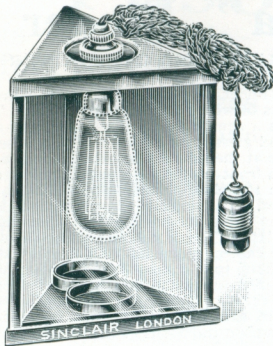
Specimen Size and Price :

Size about 5 ft. × 4 ft.	£9 0 0
„ „ 7 ft. × 4 ft.	10 0 0

Quotations given for any size.

**SINCLAIR
LONDON**

The "Sinclair" Folding Copper Lamp

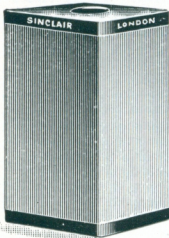


This Lamp is a thoroughly well made lamp, constructed of copper in such a way that it will take the usual safelights $8\frac{1}{2} \times 6\frac{1}{2}$ in., and is arranged with "bayonet" or "screw" adapter for attachment to electric light fittings. Where there is no electricity, the aperture which takes the electric light fitting is closed by means of a screw cap, and either "Sinclair Devolights" or Fairy Night-lights may be used for illumination. Folding flat and being non-rustable, it will be welcomed by travellers.

The price, complete with 6-ft. of flexible wire and lamp attachment, together with one $8\frac{1}{2} \times 6\frac{1}{2}$ in. Wratten Safelight of any grade, is 35/-
 Extra adapter so that Lamp can be used with either "bayonet" or "screw" fitting 5/6
 Extra Safelights each 5/6
 Tropical "Devolights" for use with this Lamp, if electricity is not available per doz. 2/6
 When ordering, state whether Lamp is required with "bayonet" or "screw" fitting.

The Sinclair "Tourist" Folding Lamp

(Made in Copper)



The Sinclair "TOURIST" Lamp, being made of copper, is non-rustable, and the upper and lower portions being pressed out of metal, have no joins at the corners, thus obviating stray light. The body of the lamp consists of two thicknesses of fabric, and this is sufficient for Orthochromatic, although not for Panchromatic plates.

Price, in box complete .. 4/-

Sinclair "Devolights" for use with these Lamps per doz. 2/6
 The Sinclair "Devolights" give much more light than an ordinary night light, and being of hard wax, are suitable for the tropics.

**SINCLAIR
LONDON**

The "Sinclair" High Power Focussing Magnifier. X.8.

Will be appreciated by those doing copying work or in subjects where very critical focussing is essential. Glasses with great magnifying power are usually so short that it is difficult to get the head sufficiently close to the ground glass focussing screen. In the case of the "Sinclair" Magnifier the tube is $5\frac{1}{2}$ in. long, and the end which is placed into contact with the ground glass is sufficiently large to keep the glass steady when moving it over the surface. It reverses the image and consequently the picture on the screen is seen the right way up.



It is sold in a leather covered carrying case measuring $5\frac{1}{2} \times 1\frac{1}{2}$ in., and the weight, complete with case, is 5 ozs.

Price, in case complete £2 2 0

The "Sinclair" Map Reader

This Reader consists of a solid block of glass, which stands on the map, photograph, postage stamp or other article which it may be desired to examine. No special focussing is necessary, and motorists can examine details of their maps without stopping their cars. Curio collectors will appreciate the ease with which they can examine details of the signatures, etc.

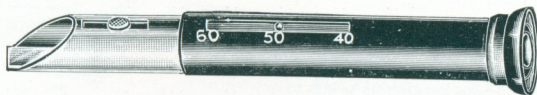
The Reader is sold in a leather covered case, measuring $1\frac{3}{4} \times 1\frac{3}{4}$ in. (45×45 mm.), and the weight is $4\frac{1}{2}$ ozs.

Price, in case complete .. 7/6



Pen Microscope

These microscopes have the great advantage that they possess high power in a small space, and are wonderfully convenient to use. The No. 1 pattern is like a fountain pen in appearance and magnifies 25 times. The No. 2 pattern as illustrated is rather larger in size, and is fitted with achromatic lenses giving larger



field and magnification (40 to 60 times). The end of the microscope is placed on the surface to be magnified, and a sliding stud enables sharp focus to be secured. They are invaluable for examining signatures, botanical specimens and any fine detail.

No. 1. 25 times 5/6 each

No. 2. 40 to 60 times, in pocket-purse case .. 13/6 "
Screw focussing, 2/6 extra.

No. 3. 40 to 120 times, with stand 52/6 "

**SINCLAIR
LONDON**

HOW TO MAKE A BROMOIL PRINT

Concise instructions for this interesting process

by JAMES A. SINCLAIR, F.R.P.S.

including catalogue of materials.

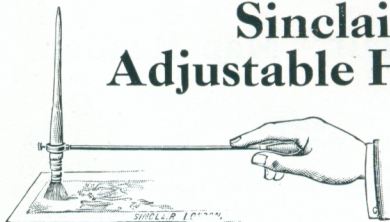
Post Free on application.

Sinclair Trial Outfits

containing the essential requisites for beginners,
with Bromoil. Boxed complete. Price 10/6.

Postage in U.K. 9d. extra.

Sinclair Adjustable Hopper



A valuable adjunct for increasing contrast over small areas and for working clouds into the sky.

Price 2/6 each.

ACCESSORIES

Compressed Fibre Slabs —for pigmenting, 10 × 8		2/- ; 12 × 10	3/- ; 15 × 12	4/6
"Clairo" —a non-inflammable fluid for cleaning oil pigment brushes—		per bottle, 1/6 and		
Pigmenting Palettes —plate glass, ground surface and edges. This is the best palette		each	3/-
Palette Knives	2/-
Blotting Boards —special thick, fluffless, 25 × 20, 5d. per sheet ; per doz.		4/-		
Retouching Lancets —for removing defects or scraping up lights in prints—		(see page 513) per box		
Oil Stumps —for retouching and putting lights in wet prints		per doz. No. 1	5d.	
No. 2, Specially fine		per doz.	6d.	
Spirit Sensitizer —for Oil prints, including Blanchard brush		per bottle	1/9	
Flat Hog Hair Brushes —for use with Spirit Sensitizer		each	3/-	
Tabloid Sensitizer —(B. W. & Co.)		per carton	1/-	
Metal Clips —for hanging up prints to dry		per doz.	2/3	
Varnish for Oil Prints		per bottle	1/9 and	
Ditto, French		per bottle	2/3	
Plastic Rubber —This may be moulded to any shape and is most useful for working on wet prints		per piece	4d.	
SINCLAIR FINISHING RUBBER —For strengthening lights on any prints. Almost magical in its effect		per piece	6d.	

**SINCLAIR
LONDON**

Sinclair BROMOIL Brushes

Genuine Pole-cat Fitch Brushes.—These are undoubtedly the best brushes for Oil and Bromoil work and will last for years if carefully used.

No. 1, 1/6	*No. 5, 2/6	No. 12, 7/6	No. 20, 22/6
No. 2, 1/7	*No. 8, 4/6	No. 14, 9/6	No. 24, 31/6
*No. 3, 1/10	*No. 10, 6/-	No. 18, 16/-	No. 28, 50/-

Small size for detail work A, 7d.; B, 8d.; C, 9d.; D, 10d. each

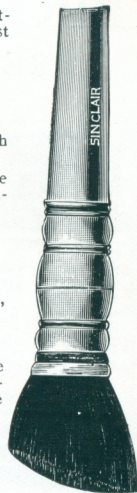
"B" Series Bromoil Brushes.—These brushes were introduced by us when pole-cat hair was practically unobtainable and a.e. of excellent quality but have less resiliency.

No. 0, 1/-	*No. 5, 1/6	No. 12, 3/-	No. 20, 7/-
No. 1, 1/1	*No. 8, 2/-	No. 14, 3/6	No. 24, 9/-
*No. 3, 1/3	*No. 10, 2/6	No. 18, 6/-	No. 28, 10/6

*Nos. 3, 5, 8 and 10 are also supplied "straight cut" instead of bevel shape and are for use with a "Hopper."

"Mortimer" Brush.—This Brush is made of long and fine hog hair, shaped like our Fitch Brushes, and will be appreciated by those who desire broad effects. It is used by the Editor of the **Amateur Photographer**.

No. 1, 3/4 in. .. 3/6	No. 3, 1 1/4 in. .. 6/9
No. 2, 1 in. .. 5/-	No. 4, 1 1/2 in. .. 7/6



The Sinclair Bromoil Bleacher

**Needs no Acid Bath and
makes Pigmenting a pleasure.**

The Sinclair Bleacher is made from our improved formula, which enables a Bromoil to be made from a more delicate print than is usual with work of the published receipts.

It is used by many leading experts.

10 oz. concentrated solution .. 2/-

Post Free in U.K., 2/9

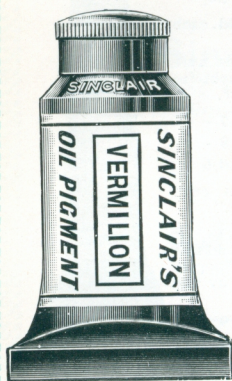
PAPERS FOR THE BROMOIL PROCESS

Double Weight: White, Smooth or Rough; and Cream, Smooth or Rough.

6 1/2 x 4 1/2	8 1/2 x 6 1/2	10 x 8	12 x 10	15 x 12
7 pieces 1/3	3/- per doz.	4/2 per doz.	6/4 per doz.	9/6 per doz.

**SINCLAIR
LONDON**

SINCLAIR'S IMPROVED BROMOIL PIGMENTS ARE THE EASIEST TO USE.



Colours.

BLACK,
BROWN,
BROWN BLACK,
SEPIA,
WARM SEPIA,
BURNT UMBER,
COBALT BLUE,
ULTRAMARINE,
INDIGO,
ENCRE MACHINE. A hard warm black ink.
ENCRE TAILLE DOUCE. A soft ink to mix
with Encre Machine.

These two last are the inks used by
Messrs. Demachy, Puyo, Read, etc.

All above colours $\frac{1}{3}$ per tube.

Special Colours for Three Colour Work,
 $\frac{2}{6}$ per Tube.

MEDIUMS for thinning the Colours.

The Roberson Medium—For quick drying
6d. per Tube.

The Sinclair Bromoil Medium—A slow drying medium especially useful in
the Transfer Process. $\frac{2}{3}$ per large tube.

Sinclair 'Clairo'



A
**NON-FLAM
CLEANING
FLUID**

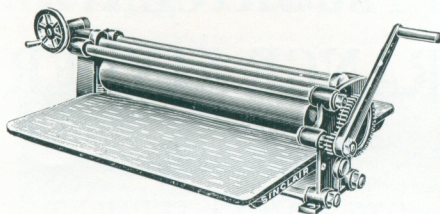
**FOR CLEANING OIL PIGMENT, BRUSHES, AND THE
BEST CLEANSER AND CLEANER FOR THE HOME.**

Cleans without injuring Silks, Satins, Woollens, Linens Kid Gloves and Shoes
Gramophone Records or Typewriters.

Bottles, $\frac{1}{6}$ and $\frac{2}{6}$ each.

**SINCLAIR
LONDON**

Bromoil Transfer Press



The beauty of the transfer process appeals to everyone. By its means is obtained a peculiar quality very similar to that of photo-gravure. This Press is specially designed for the process, its features being:—

Perfect alignment of rollers, eliminating the need of a blanket, and ensuring a clear cut impression without creep.

Simple and effective pressure loading device, giving the finest adjustments by the single motion of the hand wheel.

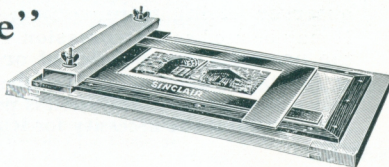
Ease and evenness of operation through the reduction gearing of ratio 3 to 1, giving easy turning with one hand.

Dimensions :—Roller Diameters $3\frac{1}{8}$ inches. Effective Width of Rollers 20 inches. Table 23×23 inches. Approximate Weight 100 lbs.

Price, inclusive of Zinc Sheets

.. £11 15 0

The "Revelle" Bromoil Transfer Desk



This desk was designed by Mr. A. Hamilton Revelle, a very clever and artistic worker, and it is particularly adapted for those who work in the smaller sizes, say up to $8\frac{1}{2}$ in. by $6\frac{1}{2}$ in., or who wish for further power of control when transferring.

It consists of a drawing board 16 in. by $11\frac{1}{2}$ in. in which is framed a piece of plate glass. Two zinc squares are adjustable to hold the reversed Bromoil print, and these, as well as the transfer paper, are firmly held in position by a clamping board at one end of the desk.

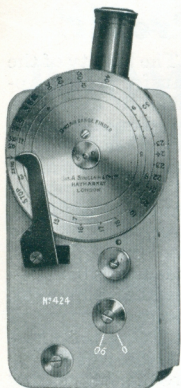
The transfer is made by pressing a "tool" on the back of the transfer paper. With this desk re-inking is unnecessary. The progress of the print can be repeatedly examined, and continued action of the "tool" on the back of it will gradually increase the strength in that part. It is evident that this desk affords scope for much selective treatment in pictorial work.

Price, 25/-

Postage and packing in the U.K., 1/-

Transfer Tools, 3/- each.

**SINCLAIR
LONDON**



The SINCLAIR RANGE FINDER

IS THE PERFECT
ONE MAN INSTRUMENT

Some advantages and uses of
the Sinclair Range Finder

MILITARY

It can be used for taking ranges and dimensions of any distant object with great exactness by one man. It registers the ratio of distance to base, and makes the base at the point observed.

It will measure the distance of an object without the observer having to move in a lateral position.

It may be used as a Depression Range Finder, without the necessity for a pedestal or levelling.

It can be used during attack, when, owing to enemy's fire, only a momentary observation is possible and will give the range without the necessity for leaving cover.

NAVAL

It may be used as a Range Finder from a fighting top.

It may be used from sea level when attacking permanent land fortifications.

It is the best instrument for Station Keeping and Coast Navigation.

It is unrivalled for rapid sextant work when it is advantageous to avoid the delay of consulting mathematical tables.

SURVEYING

It is the best instrument for Rapid and Accurate Survey Work, used in conjunction with a Plane Table.

The Sinclair Range Finder does not need a definite Base, Mathematical Tables or Difficult Calculation.

Weight in case complete, 2 lbs.

Price, including leather sling case £7 10 0

Send for Descriptive Booklet.

**SINCLAIR
LONDON**

WE SPECIALISE IN Moving Picture Apparatus

Don't neglect making moving-picture records of your Home-Life or Holiday Scenes. They will be of the greatest interest in years to come.



Our Optical and Ciné Projection Room, 9-10 Charing Cross.

In our new Optical Projection Room we can show on the screen results obtained with the following apparatus, which we regularly stock.

**For Sub-Standard
Film.**

{ The Pathé Baby Ciné Cameras.
The Kodak Ciné Cameras.
The Bell-Howell Filmo Cameras.

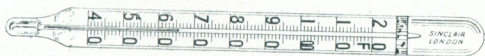
**Standard Size
Film.**

{ The Bell-Howell Eyemo Camera.
The De Vry Automatic Camera.
The "N.S." Standard and Automatic Cameras.

Projectors of the best makes for all the above.

The "Sinclair" Legible Thermometer.

This thermometer will be found of great value when working with red and green safe lights, the scale being a very open one, and the figures of a large size.



The former has a range of from 40° to 120° F. and the scale is of opal contained in a glass tube and consequently unaffected by chemicals. The mercury tube has a magnifying lens front. The thermometer is sent out in a cardboard case and is 8½ ins. long.

Price 6/6

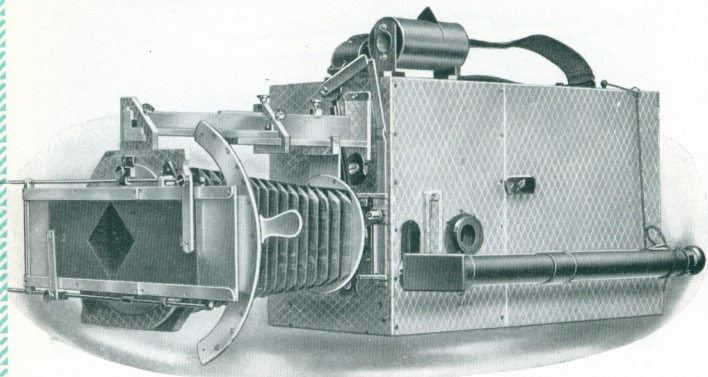
**SINCLAIR
LONDON**



(NEWMAN & SINCLAIR'S PATENTS)

KINE' CAMERA

WITH

AUTOMATIC ELECTRIC DRIVE

Showing camera fitted with "N.S." Vignetting and Dissolving Apparatus
as supplied to the

ROYAL GEOGRAPHICAL SOCIETY

for the wonderful film

CLIMBING MOUNT EVEREST;

and amongst others to

MR. HERBERT G. PONTING, F.R.G.S.

**THE METROPOLITAN MUSEUM OF
ART, NEW YORK;**

MAJOR RADCLIFFE DUGMORE

MR. CHERRY KEARTON

We have no hesitation in stating that our No. 3 "N.S." Kine' Camera is the most perfect instrument that has ever been made for the highest class Studio or Topical work, and is equally without peer for the Explorer or Scientist.

In general form the No. 3 Model is something like the Newman-Sinclair instruments which achieved so much success in the Great War, but the details of construction are such as to meet the demands of advanced modern studios where "effect" studies play a prominent part. The No. 3 "N.S." Kine' Camera greatly simplifies the production of the most elaborate effects, while its accuracy and reliability of construction makes it pre-eminent in this and every other sphere of moving picture photography.

**SINCLAIR
LONDON**

THE "N.S." KINE' CAMERA—*continued.*



Copyright Mount Everest Committee.

Captain J. Noel, F.R.G.S., with the "N.S." Camera at 23,000 feet
filming the climbing party at 25,500 feet.

SPECIFICATION.

Camera built entirely of metal, all parts being milled out of the solid, no castings being used. The metal is almost as light as aluminium, but is free from that metal's instability, and in its general characteristics and properties for standing shocks and strains resembles mild steel. Being light in colour, it reflects heat, and is therefore particularly adapted for tropical climates.

All works easily visible when the doors are opened, and every part accessible for cleaning.

Reversing action by merely turning the handle backwards. No bands to be shifted.

Square Film Boxes (holding 400 ft.) entirely without projections which automatically gear when placed in the camera. The absence of projections and the square form make them the most convenient for packing and transport. These boxes are provided with mouths which automatically open when closing the camera and they entirely obviate electrical markings or "static."

Automatic Shutter "fade out" and "fade in," by merely pressing a lever when the camera is running. It works equally well when running forward or backward and the normal "fades" take place in 5ft. or 10ft. of film, at the will of the operator. The "fade" can be arrested in any position, either in opening or closing. Shutter alterable to any size at will, from the outside of the camera.

Film Counter. This is at the back of the camera, and shows very plainly the amount of film in the camera, and the length to a single picture determined at any moment. Each individual picture is recorded, and can be returned to after exposing any length of film.

Focussing can be accomplished by three methods in this apparatus. Firstly, from a reflex focussing arrangement which carries a magnifying eye-piece on the side of the camera. Secondly, by an accurate scale focussing seen from the back of the camera. Thirdly, by a prism eye-piece for magnifying the image seen through the film itself.

**SINCLAIR
LONDON**

THE "N.S." KINE' CAMERA—*continued.*

SPECIFICATION—*continued.*

Iris worked from the back of the camera, by the movement of a lever, accurately scaled. The same scale may be adjusted to automatically work with both 2" and 3" lenses, without alteration.

Masks of any design can be inserted or removed without opening the camera and film is consequently saved.

Lenses interchangeable on interchangeable fittings, which can be attached or detached with one hand only.

Single picture handle always in position.

Brilliant Finder. Each camera is supplied with a brilliant finder, which is quickly attached or removed from the top of the camera, and this finder is without parallax. Masks are supplied to fit the finder, so that the correct image can be seen with lenses of any focus.

The "N.S." Automatic Electric Drive. Owing to the extraordinary ease with which the "N.S." Kine' Camera runs, we are able to drive it with a small motor that only weighs 2½ lbs., the power being provided by a battery which, with its containing box, weighs 9½ lbs., and which will drive 4,000 ft. without recharging. For Studio use larger size batteries may be had. For those who require it, we also provide a Relay Instrument complete in box, by means of which the camera can be started and stopped at any distance up to 100 yards, and longer distance relays can be made to order. Full particulars will be found in our Kine' Camera Catalogue.

The "N.S." Vignetting and Dissolving Apparatus. This apparatus is carried on the front by means of an extension arm, detachable in an instant. It consists of bellows fitting carrying at the front our Improved "N.S." Iris Attachment and Adjustable Card Carrier. This iris can be set to vignette any portion of the picture, and is so constructed that it gradually and **entirely** closes and it can also be set to open or close to any definite point desired. The front card holder enables a roller blind or curtain effect to be produced, or by cutting cards to any desired shape, parts may be vignettted off. A second attachment forms a most complete vignetting device, which enables squares, rectangles, ovals or blind effects to be produced at any part of the picture and the action is controlled exactly and with great sweetness by a simple lever movement. The metal portions of these attachments are constructed of the same metal as the body of our cameras; they close up into a very small space when not in use, and only weigh 3 lbs.

Concerning the tour of H.R.H. The Prince of Wales in S. Africa and S. America, H. Bruce Wolfe, Esq., of the British Instructional Films, sent the following extract from a report by Mr. Barkas, their chief Operator:

"I find that it is very handy, light in weight, simple in operation and exceedingly quick off the mark. It is silent. As a machine for this type of work, or for work in the Tropics or in severe cold, I would recommend the New-man-Sinclair."

Mr. Harry Burton, of the Metropolitan Museum of Art, New York, writes:—

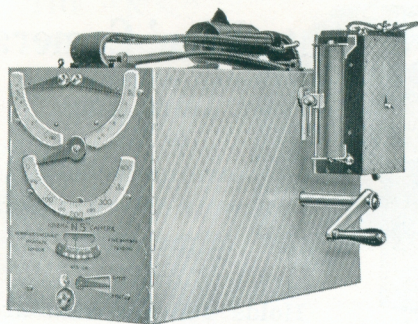
"The Camera acted splendidly as always."

Captain J. Noel, F.R.G.S., the official photographer to the Mount Everest Expedition, writes:—

"At all times the camera behaved perfectly, and during all my climbs I found the apparatus never a burden but always a pleasure to operate. I could not have got my pictures unless my camera had been so portable and efficient."



Major A. Radclyffe Dugmore with the "N.S." Kine' Camera with Automatic Electric Drive.



The "N.S." Camera is the easiest camera to thread, using a minimum quantity of film and can be threaded as easily backwards as forwards. **It is the lightest running camera ever made.**

Size of Camera with 2 film boxes, 14 × 5½ × 8 inches (355 × 146 × 204 mm.).

Weight 18 lbs. 5 ozs. (8.3 Kilos).

The "N.S." Kine' Camera with *Automatic Electric Drive*, the back of the Camera shows Counter, Iris and Focussing Levers, Fade Away Lever and Film Marker.

Net Cash Prices in London.

FOR TOPICAL USE

	Price			Code Word
	£	s.	d.	
No. 3 "N.S." Kine' Camera, as described for Studio use, but without the iris and dissolving attachment for front of camera	200	0	0	SPADROON
Ditto, with electric automatic drive and battery ..	225	0	0	SPAGAT

FOR STUDIO USE

No. 3 "N.S." Kine' Camera, as described, with either 1½ in. or 2 in. F/3.5 Ross "Xpres" Lens, complete with 2 film boxes, "N.S." brilliant finder, reflex focussing finder with periscopic tube attachment, fade out to shutter, front adjustable iris with fitting for blind effects and attachment for every kind of studio dissolving effect, to bring diamond, square, rectangular, or oval cut-off to any part of the picture	225	0	0	SPADATTI
Ditto, with electric automatic drive and battery ..	250	0	0	SPAETROSE

EXTRAS AND SPARES

Relay Instrument complete in box, for driving camera at any distance up to 100 yards	20	0	0	SPAIANDO
Light-tight film boxes, each holding 400 ft. .. each	4	10	0	SPAHEES
Extra Batteries for use with automatic drive, each sufficient for 4000 ft. of film without re-charging, each	4	10	0	SPAIASSE
Batteries for studio use when using automatic drive For 10,000 feet before re-charging .. each	5	5	0	SPALAVA
Set of 12 Masks in case	4	10	0	SPADICOSE
Best hand-sewn solid leather case to hold No. 3 Kine' Camera and finders	6	16	0	SPADDLE

FOR EXTRA LENSES SEE OUR "N.S." KINE' COMPLETE CATALOGUE.
Post Free on application.

**SINCLAIR
LONDON**

THE

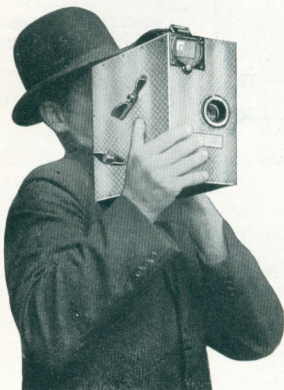


Auto Kine' Camera

(NEWMAN & SINCLAIR
PAT. APPLD. FOR)

is the

most marvellous
clockwork driven camera
in the world.



Holds 200 feet standard
film all driven with two
windings.

Since its introduction a year ago this wonderful camera has been still further improved. With film in good condition it will drive 150 feet to 180 feet with one wind of the clock and only two winds are required for the whole 200 feet that it contains.

ITS APPEARANCE.

The "N.S." Auto Kine' Camera is made entirely of metal. Duralumin being used. The box-like shape makes it a very convenient instrument to handle and carry.

THE FILM BOX.

This box is made of Duralumin. It is rectangular in form without projecting mechanism. It holds 200 feet of film, and into the same box the film is automatically wound after exposure. When the film is used, the box can be removed from the camera in daylight and another box of film inserted in its place in from 10 to 15 seconds.

THE FINDER.

The Finder is viewed right through the instrument, and it shows the image the right way up and the right way round. At the bottom of the Finder is a transparent scale, and as the film is used the number of feet exposed is read off at the same time that the subject being photographed is seen. A level inside the Finder shows the bubble in the centre of the picture while the exposure is being made.

LENSES.

The Lens normally fitted is a 2 in. F/3.5 Ross "Xpres," and extra lenses can be supplied up to 6 in. in focus, mounted in the same special focussing mounts. These mounts can be expeditiously removed from the camera, and are perfectly light-tight.

THE MECHANISM.

The camera is driven by two springs, both of which are wound to the full at starting, but either spring can be wound at any time even when the camera is in action or running. Absolutely silent ratches are employed, so that no attention is drawn to the camera whilst winding. The regulation is so exact that it varies less than 2% from the start to the finish of the run. The clockwork is arranged for the regular film speed—16 pictures per second—but an adjustment permits of considerable variation when it is necessary to take either more or less pictures in a given time.

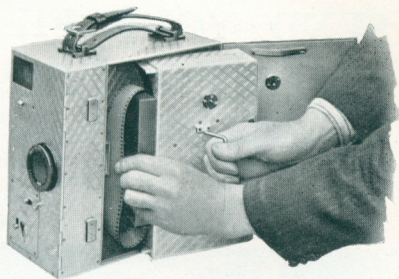
**SINCLAIR
LONDON**

THE "N.S." AUTO KINE' CAMERA—

Continued.

The camera is provided with the usual punch to record the end of a picture, and this is situated at the front of the instrument.

The construction of the "N.S." Auto Kine' Camera, as with our Standard Model, practically eliminates static. Every detail has been studied, and this instrument is an outstanding triumph in kinematograph construction.



The Camera is loaded in a few seconds.
There is no threading up.

Size $9\frac{1}{2} \times 4\frac{3}{4} \times 9\frac{1}{2}$ ins. ($24 \times 12 \times 24$ cm.)
Weight 17 lbs. (7.8 kilos).

NET CASH PRICES IN LONDON OF THE "N.S." AUTO KINE' CAMERA.

"N.S." Auto Kine' Camera with 2"	Price	Code Word
F.3.5 Ross "Xpres" Lens, complete with film box as described	£120 0 0	SPEEDED
Ditto, with 2" F.2 Cooke Lens ..	127 10 0	SPEECH
Best Hand Sewn Solid Leather Case with lock and key and sling strap	4 15 0	SPEEDING
Extra Film Boxes for 200-ft. 35 mm. film .. each	8 10 0	SPEEDWELL
Best Hand Sewn Solid Leather Case for two extra film boxes	4 0 0	SPEELBOUT
Best Hand Sewn Solid Leather Case for two extra film boxes and extra lenses	4 10 0	SPEELGOED
The "N.S." Unipod (see page 513)	1 15 0	STABILITY

For full details and prices for Extra Lenses see
Special List. Post Free on application.

**SINCLAIR
LONDON**

SEND YOUR FILMS TO US for Developing, Printing or Enlarging

At our Brixton Works, which are in ideal surroundings, we specialise in the best work. From our prices it will be seen that it probably costs less to place your orders in the hands of experts than to give them to a jobbing store that makes a D. & P. department simply a side line of another business.



Our Brixton Printing Works

V.P. Kodak	No. 2	No. 2 Bull's	No. 3	Postcard	10 × 15	½-plate	
No. 1 Brownie	Brownie	Eye, No. 1A	Kodak &	and	cm.	and	
No. 1 Ensignette	3½ × 2½	Kodak	4¼ × 3¼	5 × 4		7 × 5	
Developing	-/6	-/6	1/6	2/-	3/-	3/6	4/-
Roll Film	per roll	per roll	per doz.	per doz.	per doz.	per doz.	per doz.
Black and White							
PrintsonGaslight							
paper, per doz.	2/-	2/-	2/6	3/-	3/6	4/-	4/6

Post Free for Cash with order.

Every kind of Printing and Enlarging is undertaken as well as Finishing and Framing, and we shall be pleased to quote for any requirement. Send for complete list of this work. Post Free.

Lantern Slides a speciality. Warm or Black Tones, 20/- a dozen.

SINCLAIR
LONDON