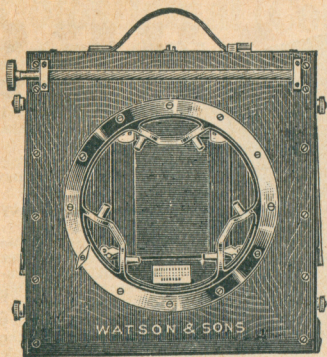


## WATSON'S CAMERAS

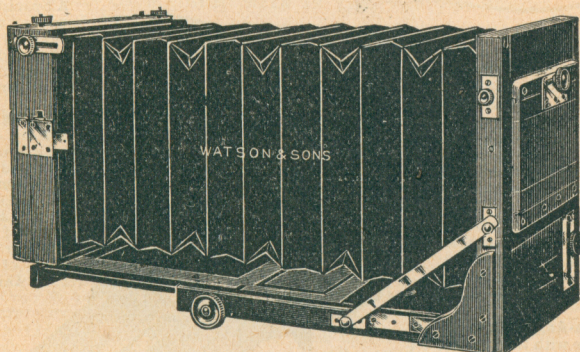


are supreme by reason of their workmanship, durability, accuracy and facility of movements. Many of them come into the makers' hands after 25 to 30 years' use in perfect condition.

### THE ACME

The best and most compact pattern of **Portable** Camera made, combining strength and rigidity with the minimum weight. All sizes, from  $\frac{1}{2}$ -plate to  $15 \times 12$ .

### THE PREMIER



FOR any purpose where lightness and portability are not the chief consideration the "Premier" Cameras should be chosen.

Their solid construction and weight ensures a maximum of steadiness and strength.

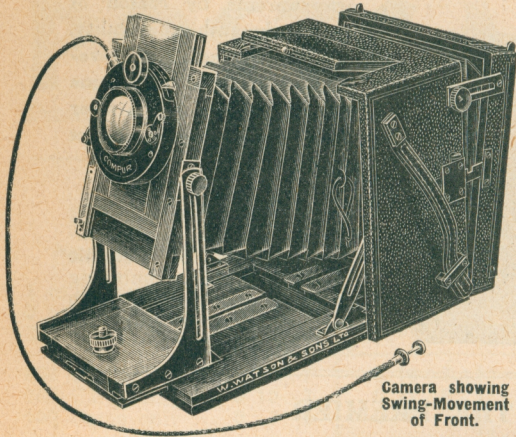
For use in the tropics or at home *intending purchasers of new Apparatus will find the Watson Camera the cheapest and soundest investment they can make.*

*Its qualities of endurance and reliability are inexhaustible.*

Catalogue of the above, with full description of prices, free on application.

W. WATSON & SONS, Ltd., 313 High Holborn, LONDON, W.C.1

# Watson's "Alpha" Camera. DE LUXE MODEL.



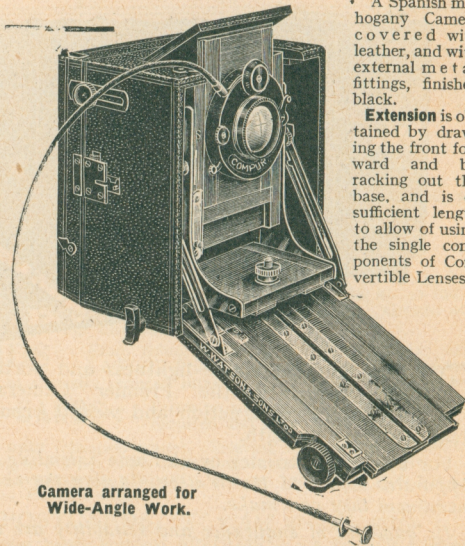
Camera showing Swing-Movement of Front.

**Swing Movement** is provided both to the **Back** and **Front** of the Camera.

**Rising Front.** A very great amount of rise is obtained, as not only does the Lens panel rise, but also the main Front itself.

**Reversing Back** is provided, so that pictures can be taken in either horizontal or vertical positions without movement of the Camera.

**Wide-Angle Work** can be done with the Camera, and a separate rack and pinion motion is provided, so that Lenses of very short focus working inside the Camera body can be accurately adjusted, and the base of the camera being dropped out of the horizontal plane, there is no interference with the angle of view.



Camera arranged for Wide-Angle Work.

**T**HIS Camera is designed for use in the hand, but is also completely adapted for general use when mounted on a Tripod, having all the movements common to Field Cameras, including reversing back, swing motion at front and back, and double extension by rack and pinion.

The whole design is extremely simple and free from complicated mechanism, and the workmanship is of the Watson quality.

Its precision and accuracy of movement render the Camera specially suitable for Scientific Workers.

## SPECIFICATION.

- A Spanish mahogany Camera covered with leather, and with external metal fittings, finished black.

**Extension** is obtained by drawing the front forward and by racking out the base, and is of sufficient length to allow of using the single components of Convertible Lenses.

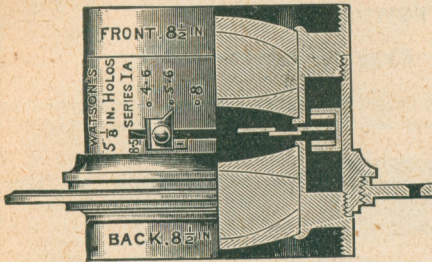
**N.B.**—Catalogues giving full particulars and prices will be sent free on application.

**W. WATSON & SONS, Ltd., 313 High Holborn, LONDON, W.C.1**



# WATSON'S Holostigmat (Convertible) Lenses

for Architecture, Landscape and Portrait work.



Combining three lenses in one and consisting of two cemented components—the only true type of Anastigmat—these Lenses alone, owing to the reflecting surfaces being fewer than in any other type, **give the maximum rapidity and freedom from halation.**

They are thus the most suitable for Architectural, Interior and General Work, and especially for Night Photography.

PRICES OF MEDIUM SIZES IN THE VARIOUS SERIES.

	Focus.	Plate.	Price.
Series IA. <i>f/4.6.</i>			£ s. d.
No. 4 ...	5 1/8 in.	4 1/4 × 3 1/4	10 16 0
6 ...	6 1/8 in.	5 × 4	12 16 0
8 ...	7 1/8 in.	6 1/2 × 4 3/4	18 8 0
Series I. <i>f/6.</i>			
No. 3 ...	4 1/2 in.	4 1/4 × 3 1/4	7 8 0
5 ...	5 1/2 in.	5 × 4	8 8 0
7 ...	6 1/2 in.	6 1/2 × 4 3/4	9 12 0
10 ...	8 1/2 in.	8 1/2 × 6 1/2	15 4 0
Series III <i>f/9.</i>	for half-tone	and three colour	work
No. 2 ...	13 1/4 in.	12 × 10	19 0 0
3 ...	15 3/4 in.	15 × 12	26 0 0
4 ...	22 1/2 in.	20 × 16	35 0 0
Wide Angle. <i>f/11.</i>			
No. 3 ...	3 1/2 in.	6 1/2 × 4 3/4	6 0 0
6 ...	4 1/2 in.	8 1/2 × 6 1/2	7 4 0

Full List of sizes and prices sent free on application.

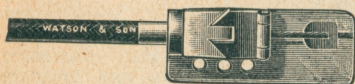
**W. WATSON & SONS, Ltd., 313 High Holborn, LONDON, W.C.1**

## THE ONLY RELIABLE Shutter Release

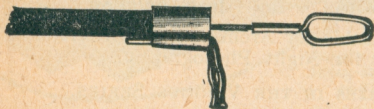
# WATSON'S ANTINOUS (Regd.) BRITISH MADE.

### Insist On Having It.

ILLUSTRATIONS (full size) of the patterns principally in demand, with particulars of the best-known Cameras and Shutters to which they can be fixed.



For Thornton-Pickard and other makes of roller-blind Shutter.



For Shutters with projecting trigger operated by the pull-down movement



For Bausch and Lomb, and for diaphragm Shutters fitted with air cylinder.



For Koilos Shutters.



For Spido, Block-Note, and Zells Bebe Cameras.



For all Diaphragm Shutters provided with screw fitting for attachment, such as Compound, Acme, Lukos.



For Vest Pocket Kodaks.  
(6 in. lengths.)

All the above, Price 2s. 6d. each.

The Releases are generally 9-in. long, but may be had in 24-in. if required for the same price.

Extra long Release to order, 6 ft., 5s. ; over 6 ft., 2s. extra, plus 9d. per ft.  
Release for Reflex Camera complete with attachment, 2 ft. long, 4s. 6d. (Soho 5s. 6d.)

W. WATSON & SONS, Ltd., 313 High Holborn, LONDON, W.C.1