



*Leica*

**THE CAMERA  
OF MODERN TIMES**

**E. LEITZ, INC. NEW YORK, N. Y.**





*Cover picture:*

—LEICAphoto by Ivan Dmitri—

Oskar Barnack, the man who created the LEICA.  
Self-portrait with f:4.5 135 mm. lens at 6 ft  
distance,  $\frac{1}{2}$  sec. at full aperture.



# LEICA

## THE CAMERA OF MODERN TIMES

### THE ORIGINAL AUTOFOCAL CANDID CAMERA

#### THE ULTRA-MODERN CAMERA

The LEICA camera, which was presented to the world shortly after the World War, is to-day Number One camera of our modern times. It was in its origin, and still is to-day, far ahead of the times, and therefore considered the Ultra-Modern photographic instrument of to-day.

Many thousands of LEICAS are in active use in every part of the world and in the most diversified types of photographic activities. The LEICA is not merely a "camera"—it is far more than that, and this is proved by the acclaim it has been accorded since its introduction.

Because LEICA is unique it has greatly widened the scope of photography as a hobby. The camera is so compact that the problem of bulk is eliminated. It can be slipped into the pocket and therefore taken along on all occasions. In addition, LEICA frees the amateur photographer of many restrictions, such as the necessity of posing subjects in bright light. It can make pictures of fast moving objects, subjects in deep shade, and even pictures at night.

Travelers, lecturers, news photographers, radio and screen stars, scientists, doctors, professors, engineers, and a host of other outstanding professional men and women select the LEICA as their personal camera not only for hobby purposes, but also for research and technical fields in which they are interested. Why?



Because the LEICA is the only camera which can perform successfully over such a wide range of activities. Indeed, there is good reason to consider the LEICA more than just a camera in the strict sense of the word.

Sooner or later YOU will own a LEICA—it will be your next camera, for as time goes on you will come to recognize its superior advantages.

## FIRST IMPRESSIONS

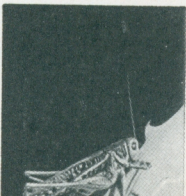
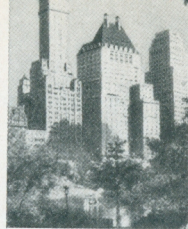
The first impression given by the LEICA is that it is truly an aristocrat among cameras. Its very appearance is that of a thoroughbred—beautifully streamlined body of smooth, satiny chrome or black lacquer, faced with a special rubberoid composition which withstands all wear and the elements indefinitely, and looks like leather. The knurled control knobs are conveniently situated for easy and speedy operation. Rounded corners make the camera fit snugly into the hands when in use. The noble-looking lens—a real aristocrat—mounted in a smart-looking chromium finished lens mount, completes the picture. But this is only a brief word-picture, and cannot even attempt to describe the true beauty of the LEICA. It must be seen to be fully appreciated. You will be most favorably impressed even with your first glance.

While the first impression you get of the LEICA will be more than favorable, it will be interesting to know more about it. You will want to know, for example, that the model G LEICA boasts of an **extremely wide range of shutter speeds** from 1 full second to 1/1,000th of a second—speeds to more than accommodate every possible photographic condition which is likely to arise. The shutter, made of a special rubberized cloth material, withstands all climates, wears indefinitely, does not produce "flare" at the higher speeds, and is practically silent in operation. It is indeed a triumph of camera manufacture.



## POINTS TO REMEMBER ABOUT THE LEICA

- • **The size** of the LEICA overall is:  $1\frac{1}{8} \times 2\frac{1}{8} \times 5\frac{1}{4}$  in. Small enough to be carried inconspicuously in the pocket or hand-bag.
- • **Weight**, complete, abt. 18 oz. (Models D, F or G with 50 mm. ELMAR lens).
- • **Shutter speeds**: Controlled by only two dials, conveniently situated. Regular speed dial on top of camera indicates speeds from  $1/20$  to  $1/500$ th ( $1/1000$ th on model G) second. Slow speed dial on front of camera indicates speeds from 1 to  $1/20$ th second.
- • **All-metal construction** assures freedom from warping and breaking—a special alloy sees to it that the LEICA is as rugged as it is practical, yet as precision-made as the finest watch.
- • **Automatic focusing range finder**: The **Autofocal** feature of the automatic focusing range finder, which is built into the LEICA, means sharp, crispy-clear pictures every time. Each LEICA lens couples automatically with this device and assures freedom from fuzzy results.





- • **The interchangeability of lenses:** makes the LEICA instantly suitable for every kind of photography, a highly-important feature. All lenses are standardized and screw into the LEICA lens mount interchangeably and positively. The screw-thread type of fitting was chosen after long consideration of bayonet and other types. Long-wear, positive action, and complete satisfaction are assured by the screw-thread mount, hence chosen for the LEICA. Two or three different cameras of conventional type would be required to do the work a single LEICA is capable of when equipped with a few accessories and interchangeable LEICA lenses. Besides, the LEICA operates far more economically.
- • **Simplicity:** the key-note of the LEICA. The design of the camera permits loading with the greatest of ease. You can't load the LEICA in any but the right way. Focusing the LEICA is almost automatic, and winding the shutter as well as transporting the film is accomplished by the turn of a single knob.
- • **The film material:** used in the LEICA is the standard 35mm motion picture film stock, obtainable all over the world. The LEICA does not make movies, but individual negatives 1 x 1½ in. Up to thirty six exposures can be made with one loading. Standard 35mm film is to be had in a great variety of types of emulsion, hence opens up new avenues to LEICA owners, particularly those in specialized fields where special emulsions are demanded. Film material for the LEICA is put up in daylight loading and unloading cartridges, making it very easy for the LEICA owner to load and unload his camera. Film is likewise obtainable in bulk, viz. 30, 50, and 100-ft. rolls which can be cut into short sections for the LEICA in the darkroom. Because motion picture film is so inexpensive, the LEICA owner can effect great economies.





—The LEICA stops fast action—  
LEICAphoto by Gerhardt Otto Goller.

- • **Handling the LEICA:** a positive pleasure. The simplicity with which the controls work, plus their smooth, positive action are real treats, especially to those who have used other cameras and can therefore make comparisons. The shape of the camera proper permits the LEICA to nestle comfortably and steadily in the hands. Pictures can be made almost as quickly as the mind conceives them, without removing the LEICA from its operating position in front of the eyes.
- • **Accessories:** play an important part, and it can easily be understood that the more than four-hundred accessories for the LEICA make it possible for it to be used in every photographic field. This does not mean that the LEICA owner will require all or even part of these many accessories, for a LEICA and one lens will be entirely satisfactory generally.

Additional equipment is essential, however, for all those who desire to delve into various specialized photographic activities. Sooner or later, the LEICA owner will find his work made more enjoyable by the addition of another lens or two, several filters, a sunshade, exposure meter, developing tank, enlarger, etc. More about accessories will be found further on in this booklet.

## **INEXPENSIVE PHOTOGRAPHY**

Everywhere in the world economy is an important factor, and this brings up a most interesting fact about the LEICA. LEICA photography is extremely inexpensive, for the small 35mm cinema film which is used costs but very little. Depending upon whether cartridges or bulk film is used, each negative costs only between  $\frac{1}{2}$  and 2 cents! Surely this is little enough to pay for a picture which may bring joy for years to come, or be a record of some monumental engineering or surgical task.

Some may point to the initial cost of the LEICA. But actually the initial cost is moderate when one considers the infinite workmanship and precision which goes into its manufacture. The LEICA is made by the world-famous Ernst Leitz Optical Works, makers of the finest microscopes and similar optical instruments. Surely quality is never sacrificed here for any consideration, and for this reason you get in the LEICA the most accurate, finest, and highly dependable photographic apparatus in the world. Once you own a LEICA, subsequent expenses cease to matter. Operation costs are nothing as compared with those of the more conventional cameras. So it pays in the end to invest a little more on the camera in order to enjoy real economy in operation.

## **DIFFICULT PHOTOGRAPHY MADE EASY**

Certain types of photography are usually referred to as being "difficult". Pictures at night, of the stage show, the movie screen, in court-rooms, night clubs, photomicrography, stereo photography, aerial photography—these are usually conceded to be "difficult". They are—for the average camera, but not for the





1. Taking a bow—by June Bershad. . . . 2. Eleanor Powell in "Broadway Melody"—by Tom Evans, M. G. M. Studios. . . . 3. Radio Singer—by Rudolf H. Hoffmann. . . . 4. A scene from "Jumbo"—by Hans Kloss. . . . 5. Jack Benny at the microphone—by Tom Evans, M. G. M. Studios. . . . 6. Elephant trainer; scene from "Jumbo"—by Hans Kloss. . . . 7. Taken at "All the King's Horses"—by Lester-Pickett. . . . 8. Another study of Eleanor Powell in "Broadway Melody"—by Tom Evans, M. G. M. Studios. . . . 9. Chorus girls—by W. D. Morgan.







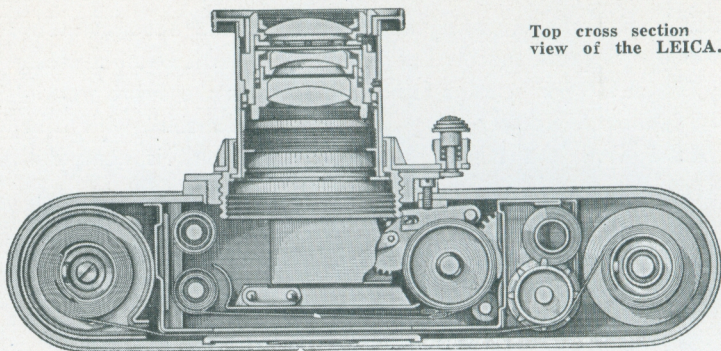
LEICA. The LEICA tackles the hardest job and accomplishes it not only with great success but with ease. That is another reason why the LEICA has become famous throughout the entire world—it is capable of doing things which are "difficult" with other cameras. With the LEICA, the word "difficult" is completely removed from all forms of photography.

Candid photography, admittedly one of the most thrilling and at the same time "tricky" forms of photography, is made simple by the use of a LEICA camera. In fact the LEICA'S superiority in this field has won for it the nick-name of "Cat's Eye LEICA". Many often refer to the LEICA as merely "the candid camera"—high praise indeed.

### EASE OF OPERATION

Whoever owns a LEICA for the first time is amazed at its simple operation. Because it is capable of such a wide variety of accomplishments, many seem to think that it necessarily follows that the camera must be difficult to handle and operate. Simplicity is the key-note of the LEICA, and by the very virtue of this simplicity, it is enabled to perform the wonders which have made it justly famous throughout the entire world. Even a child can learn to operate a LEICA successfully after a few minutes of instruction.

LEICA'S simplicity enables many single exposures to be made in rapid succession. (This is further augmented through the use of a special accessory, known as the Rapid Winder). News photographers are loud in their praise of this feature which permits them to make a series of sequence shots in a matter of seconds. News cameramen have covered an action assignment with several dozens of excellent negatives where their co-workers, equipped with the conventional news camera, have come back with only a few negatives. The advantage of being able to select from many pictures over only a few is so obvious that newspapers are rapidly equipping their photographic departments with LEICAS.

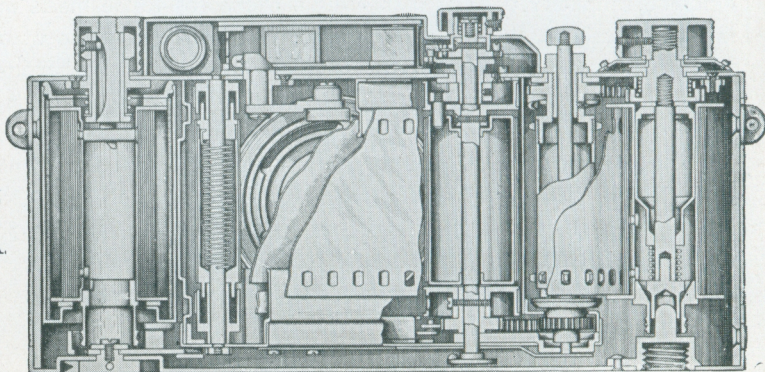


Top cross section  
view of the LEICA.

## MECHANISM OF THE LEICA

One need not be an engineer to appreciate the precision with which the parts of the LEICA are made and assembled. Each part is made of the best materials, carefully measured and fitted, resulting in a mechanism which is above reproach. Because such care is taken in the manufacture and assembly of the LEICA, it will last a life-time with only ordinary care.

In spite of the precision of the camera, it is designed to withstand rough usage. Its ruggedness is well-known to explorers and travelers who cannot always handle it with "kid gloves". Thus at one stroke precision and ruggedness, two most important features, are embodied in the LEICA.

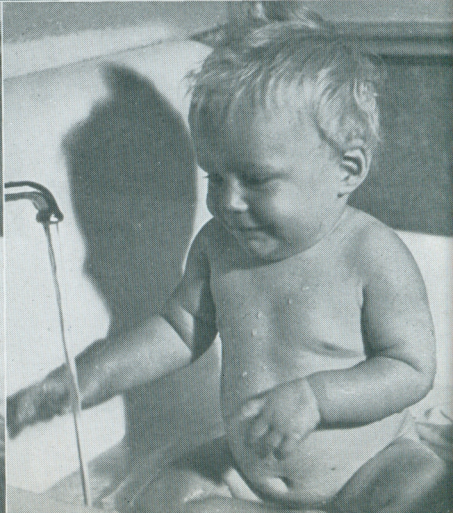
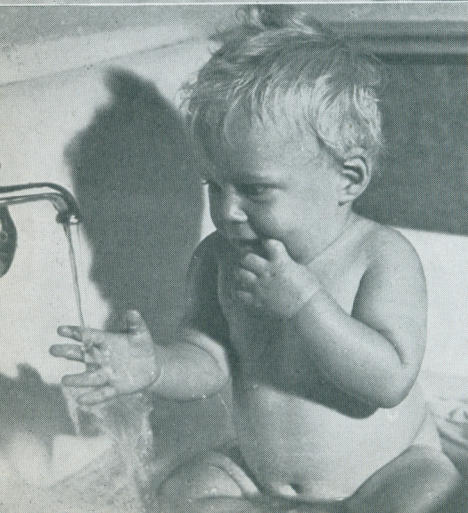
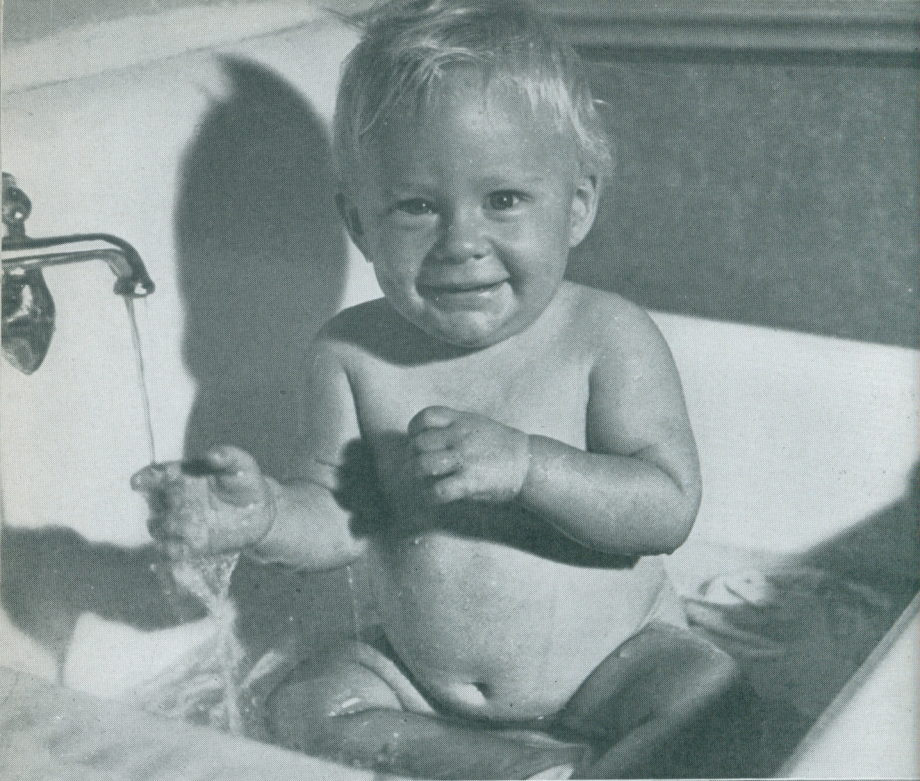


Back cross  
section  
view of  
the LEICA.



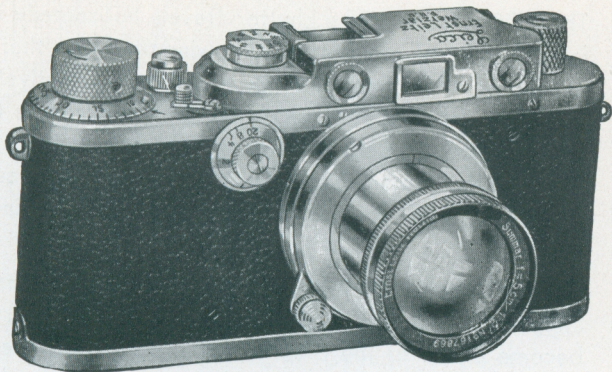








Model G LEICA  
with f:2, 50mm  
SUMMAR lens.



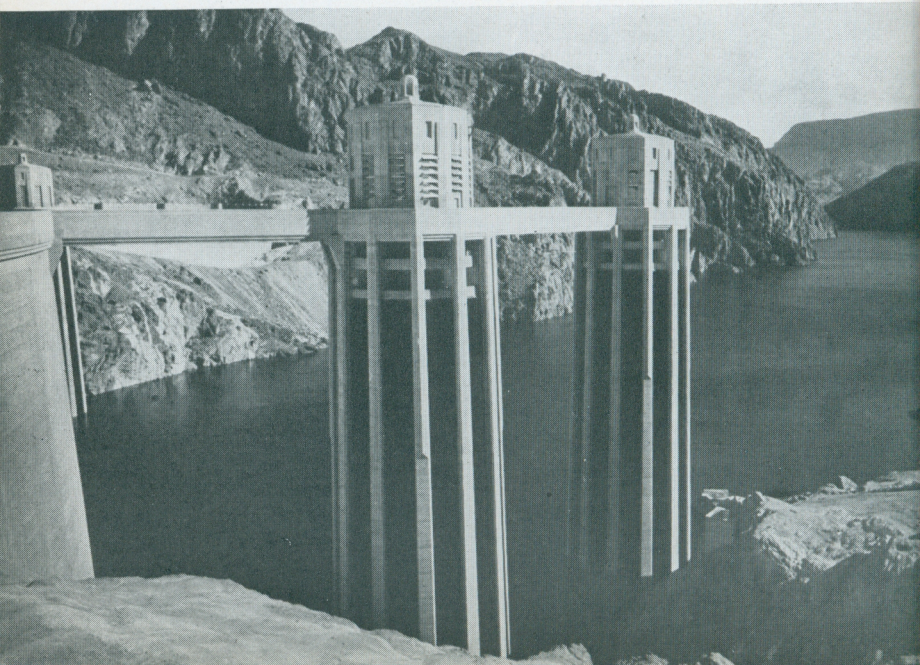
## THE LEICA MODEL G

The model G LEICA represents the ultimate in miniature cameras. Flexibility such as this model incorporates is not to be found in any other camera! For instance, shutter speeds in the model G are: 1 full second,  $1/2$ ,  $1/4$ ,  $1/8$ ,  $1/20$ ,  $1/30$ ,  $1/40$ ,  $1/60$ ,  $1/100$ ,  $1/200$ ,  $1/500$ , and  $1/1,000$ th second. The slow range of speeds (from 1 to  $1/8$ th sec.) permits a **continuous** range of speeds; for example  $1/6$  of a second exposure can be secured by setting the dial between the  $1/4$  and  $1/8$  marks. Thus most **any** desired speed can accurately be obtained in the slow range of speeds.

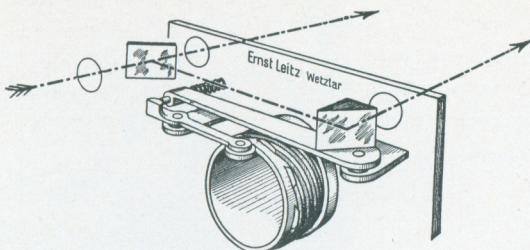
Each of the LEICA shutter speeds was determined only after careful thought and consideration. Each is a most important speed and has its definite place in photography. The standard speeds ( $1/20$  to  $1/1,000$ ) are controlled by a shutter indicator dial located on the top of the LEICA camera, while the slow range speeds (1 to  $1/20$ ) are controlled by a secondary dial situated on the front of the camera adjacent to the lens and close to the top (see illustration). With the two speed dials the slow and fast shutter speeds are definitely separated simplifying the change from one speed to another. In fact, it is so simple that it can easily be done in the dark.

The LEICA focal plane shutter travels horizontally from right to left (shutter release button to rewind knob) so that fast subjects moving in the same direction are more effectively "stopped", and with freedom from distortion. If the subject is traveling from left to right with such excessive speed that there is danger of blurring, the camera can be held upside down so as to cause the shutter to travel from left to right, thereby "stopping" the action.

The focal shutter of the LEICA is remarkably quiet, which is very important in candid photography, since the subject will not easily become aware of the presence of the photographer. News, candid, stage, clinical, animal and nature photographers especially will find this a most useful feature of the LEICA.







Diagrammatic view of the LEICA built-in range finder.

The famous built-in Autofocal range finder is worthy of some consideration. In the model G LEICA it is at its height of perfection. Basically, the device is designed on the principle of coincidence, in which a double image of the object to be photographed is seen. As the lens is focused, the twin images either separate or come together. When they are in perfect coincidence the lens is in perfect, sharp focus. A collar, which is part of each LEICA lens, fits against a tiny roller which in turn actuates the prism of the range finder. The coupling between lens and range finder is completely automatic and the owner of the LEICA need not even think about it when changing lenses. The field seen in the range finder is considerably enlarged, being magnified by a  $1\frac{1}{2}X$  magnifier. The twin images are therefore clearly seen, even in unfavorable light. As some individuals like to have strong contrast, especially in brilliant sunlight, a special orange-red filter which fits over one of the range finder ports and imparts a deep color to one of the twin images, is available at extra cost. This is an accessory, desirable but not absolutely necessary. The accompanying schematic sketch shows clearly the entire range finder assembly and its method of operation.

Eyelets are built into the body of the camera at each top end which accommodate snap-hooks which in turn are attached to the special neck-strap supplied. This strap makes it possible to carry the camera suspended from either the neck or shoulder, leaving both hands free. A ten inch wire cable release is also supplied.

Briefly, the model G LEICA has everything with which to produce the finest of photographs. It is the most advanced and desirable camera in the entire camera field. We know that you will agree with this statement after you have examined it at your local photographic store.

LEICA in focus . . . Large brilliant image seen in extremely accurate LEICA short base range finder.



LEICA out of focus . . . Double image is conveniently within the LEICA range finder field of view.

## THE LEICA MODEL F

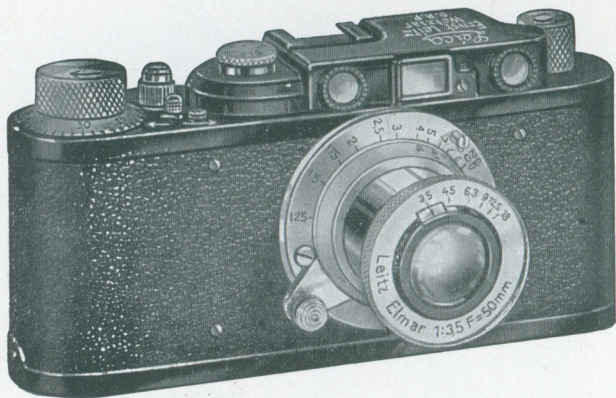
The model F LEICA is very similar to the model G excepting that it lacks the 1/1,000th of a second shutter speed. It is available in black lacquer as well as chrome finish. Aside from these two differences, what has been said about the model G applies equally well to the model F LEICA.







Model D LEICA  
with f:3.5 50mm  
ELMAR lens.



## THE LEICA MODEL D

The model D LEICA is basically the same as the models F and G, but lacks a few of the latter's refinements. For instance, the model D's range of shutter speeds is from 1/20 to 1/500th of a second only. The range finder does not possess the 1 1/2X magnifier in the eyepiece. For those who do not require the slow and extremely fast shutter speeds, the model D makes an ideal camera.



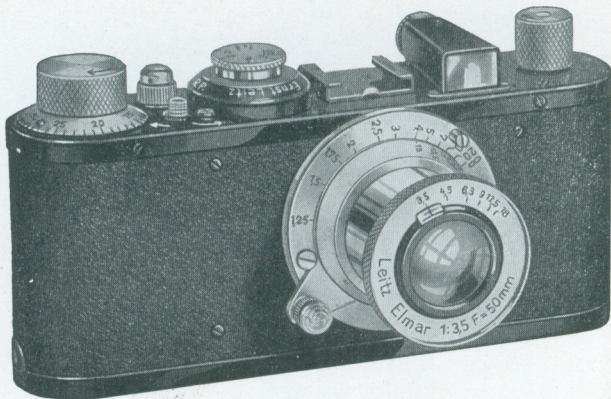
— Catch every fleeting expression with the LEICA —  
LEICAphoto by Julien Bryan.







**Model E LEICA**  
with f:3.5, 50mm  
ELMAR lens.



## THE LEICA MODEL E

The model E LEICA is often referred to as the "basic LEICA". It lacks some refinements, such as the built-in Autofocal range finder, slow and high shutter speeds, and neck-strap eyelets. A detachable horizontal range finder, however, is supplied. All LEICA models so far considered are basically the same in size, design, workmanship, and operation.

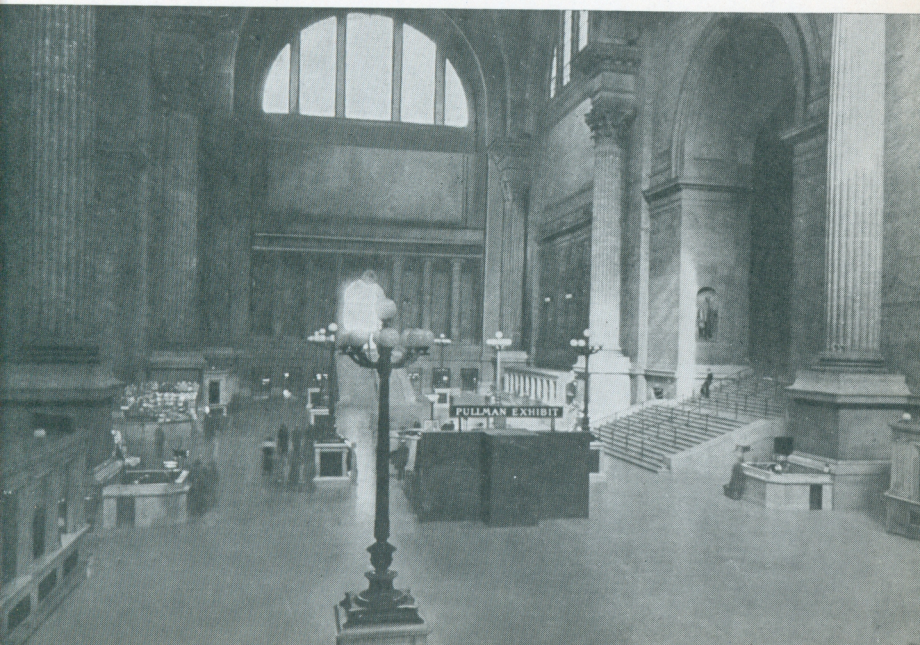
The model E LEICA is preferred by those who give first consideration to price or wish to use a camera exclusively for copying work and photomicrography where the range finder and wide selection of shutter speeds are not needed. The model E is of course standard in every respect, and therefore accommodates all LEICA lenses, filters, and other LEICA accessories.

This model makes a strong appeal to the amateur who does not care to invest in a model D, F, or G at the present moment, but who at the same time does not wish to accept any substitute for genuine LEICA photography. Of especial interest to these is the fact that the model E may at any time be converted to the model D, F or G thus modernizing the original "basic" LEICA. Here is a revolutionary idea which was originated by the manufacturers of



the LEICA and which has proved a great success. Imagine, for example, your buying a four cylinder car and later on converting it into an eight cylinder—that is exactly what LEICA offers you when you purchase the model E, or D, respectively. The soundness of the basic principles of the LEICA make this possible, and it is definite proof of the genius and engineering skill which stands in back of it.

No matter which model LEICA you finally decide upon, be it the model G, F, D, or E, you are assured of the same standard quality, precision, and workmanship. No efforts are spared to make all models the finest cameras available, regardless of price.



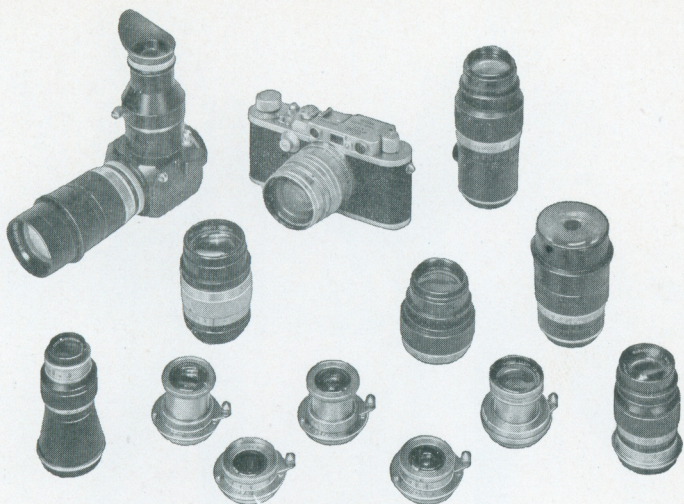


## LEICA LENSES

The amazing battery of lenses for the LEICA is a chapter in itself. The HEKTOR 28mm, THAMBAR 90mm and TELYT 200mm lenses are discussed in separate pamphlets which may be had upon request. There is a LEICA lens for each and every photographic purpose, as will be noted in the following list of lenses:

| Lens           | Focal Length | Max. Speed | Angle of View | Purpose  |
|----------------|--------------|------------|---------------|--|
| Hektor 50,290  | 28mm         | f:6.3      | 76°           | { extreme wide-angle photography   |
| Elmar 50,310   | 35mm         | 3.5        | 65°           | { normal wide-angle photography  |
| Elmar 50,320   | 50mm         | 3.5        | 48°           | { standard "all-purpose" photography   |
| Hektor 50,350  | 50mm         | 2.5        | 48°           | { sport and action photography   |
| Summar 50,360  | 50mm         | 2          | 48°           | { candid, night, and general photography                                       |
| Xenon 50,365   | 50mm         | 1.5        | 48°           | { super-speed for night-candid photography                                     |
| Hektor 50,390  | 73mm         | 1.9        | 34°           | { ultra-speed and night-candid photography                                     |
| Elmar 50,410   | 90mm         | 4          | 27°           | aerial, sport and portraiture  |
| Thambar 50,415 | 90mm         | 2.2        | 27°           | { pictorial, portraiture, and long focus photography                           |
| Elmar 50,430   | 105mm        | 6.3        | 24°           | { light weight lens for distance photography                                   |
| Hektor 50,460  | 135mm        | 4.5        | 19°           | long range photography   |
| Hektor 50,540  | 135mm        |            |               | { short-coupled, same as above, but for use with reflex mirror focusing device |
| Telyt 50,520   | 200mm        | 4.5        | 12°           | { extreme distance photography   |

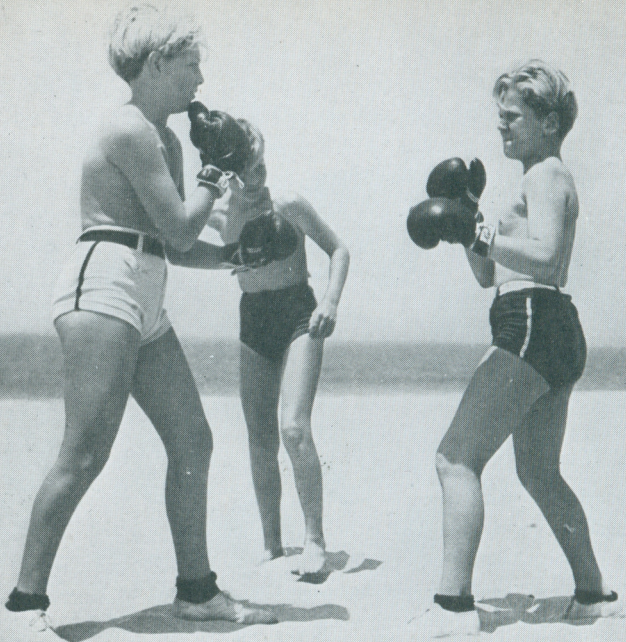




The Battery of Thirteen LEICA Lenses.







It will be apparent that with this wide selection of optics, no form of photography need be considered impossible or even difficult. It is likewise obvious that the LEICA owner doesn't need this complete battery of lenses—the selection is available to him so that for special requirements he can pick out one or more that will suit the work he contemplates. The average amateur who uses his LEICA only for routine work will usually find one lens entirely satisfactory.

The ELMAR 50mm f:3.5, HEKTOR 50mm f:2.5 and SUMMAR 50mm f:2 lenses are recommended as all around purpose lenses and the XENON particularly when high speed is likewise a desirable feature of consideration.



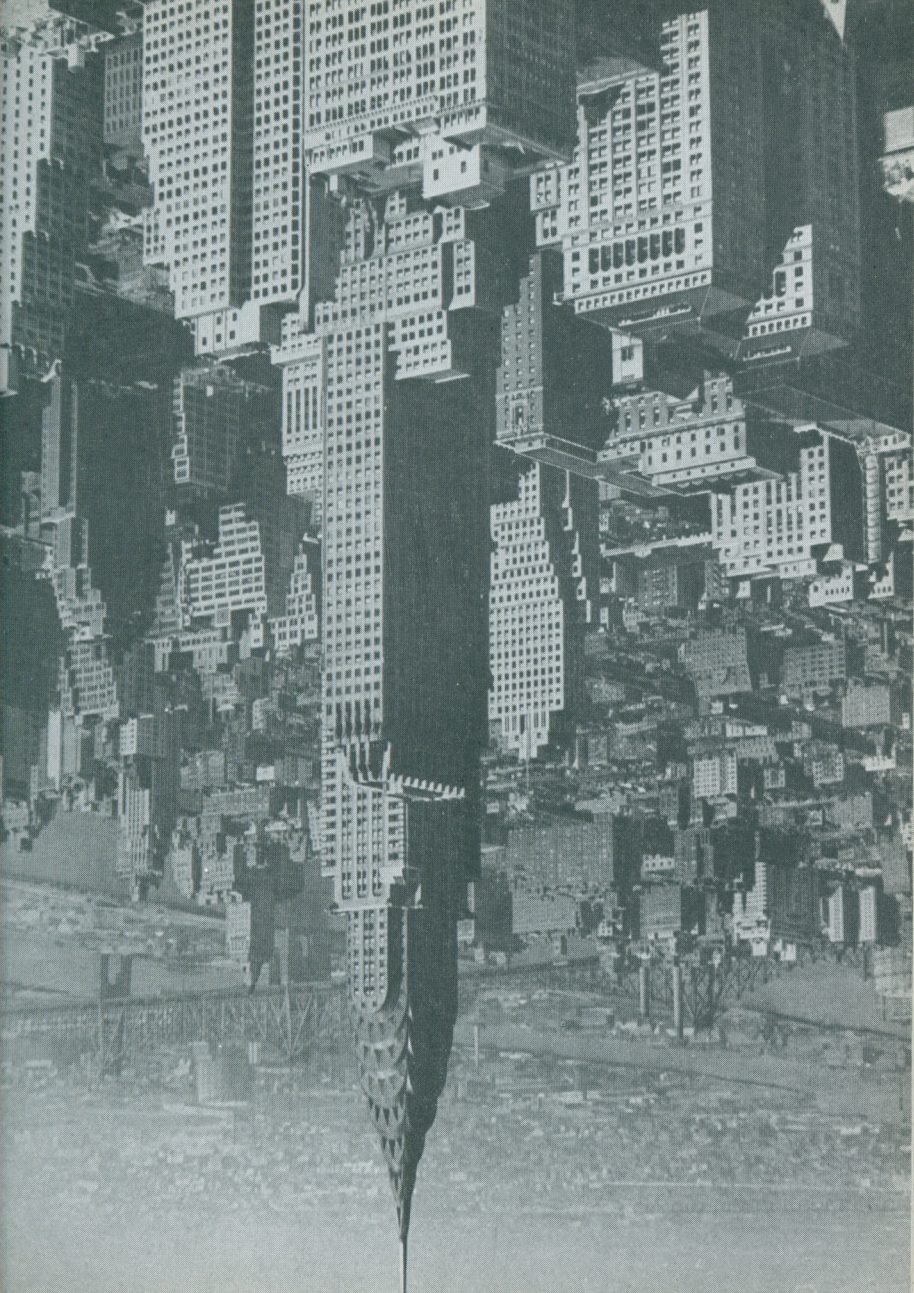
*Picture at left: — The boxing match —*  
LEICAphoto by Tom Evans, M. G. M. Studios.

All LEICA lenses are engraved with a depth of focus scale which is invaluable to all users as it tells them at a glance the extent of the depth of focus the lens produces at any given diaphragm stop. All lenses (except TELYT) are fitted in focusing mounts which automatically couple with the built-in range finder of the models G, F, and D LEICAS.

The ELMAR, HEKTOR, and SUMMAR 50mm lenses are supplied in collapsible mounts which permit them to be slid into the camera-body when not in use, thus making the camera extremely compact for carrying.









## LEICA ACCESSORIES

As has been previously pointed out, many accessories for the LEICA are available. The average LEICA owner, however, will require only a few of the more important ones for general photographic purposes. A list of these is as follows:

- Sunshade
- Filters
- Exposure-meter
- Eveready carrying case
- Developing tank
- Enlarger
- Paper easel

These few accessories will be of great value to the LEICA owner whose activities are mainly general "snapshooting".

Those who wish to become more ambitious in their LEICA-ING are referred to additional accessories which provide a greater versatility of application for the LEICA, viz.:

- Panorama device (for making panorama pictures)

- Stereoly device (for making true stereoscopic pictures)

- Remote shutter control (for animal, nature, and candid pictures secured with the operator at a distance from the camera)

- Rapid winder (for news, sport, candid, and other pictures where a sequence of many pictures of a subject in rapid succession is wanted)

- Distance lenses such as ELMAR 105mm, HEKTOR 135mm, or TELYT 200mm (for distance photography, candid pictures, out-of-doors, etc.)



View finders (for indicating the fields of the various focal length lenses)

Photoflash attachments (for snapshots in unfavorable light)

Projectors (for lectures and home use)

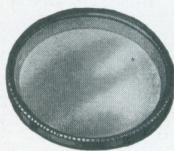
There are many ramifications not mentioned in this booklet. Interested persons desiring additional information about the use of the LEICA and any of its numerous accessories can secure complete information by writing to the Service Department, E. Leitz, Inc., 730 Fifth Avenue, New York City.

A few of the most popular LEICA accessories are described here:



No. 51,790

**Sunshade:** A most useful device, which should be owned by every LEICA user because it prevents stray light from entering the lens during exposure. The best results are obtained with a LEICA sunshade on the lens. Several models are available, each for a distinct purpose and lens. Be sure to get the right sunshade for your LEICA.



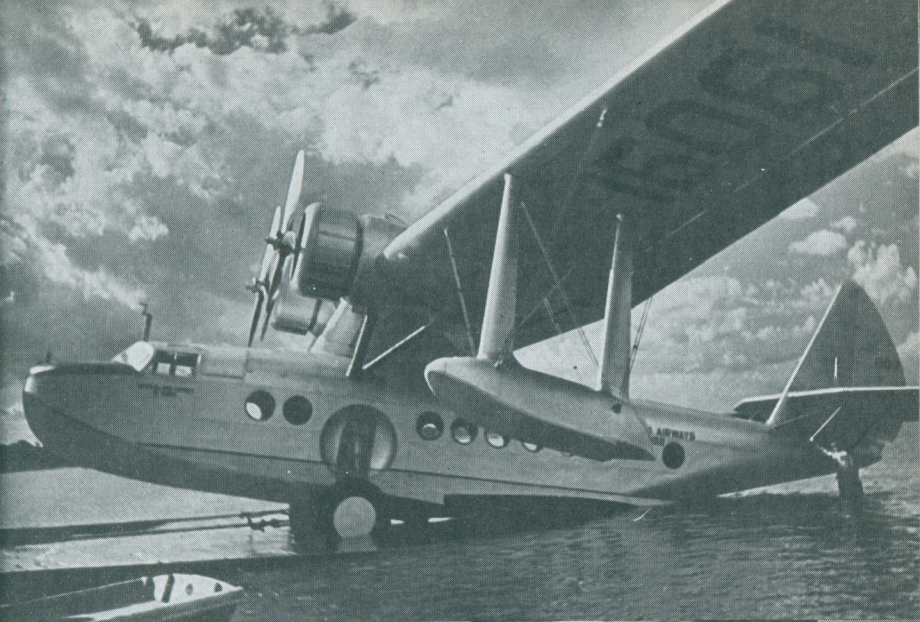
No. 51,110



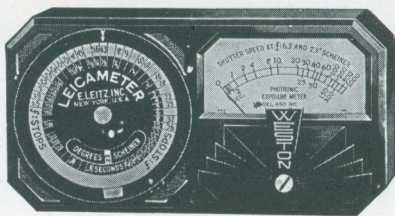
No. 51,020

**Filters:** A few well-chosen LEICA filters will make all the difference in your photographs. For bringing in cloud formations, producing night effects, and securing correct color and tonal values, a filter is necessary. The LEICA yellow filter No. 1 is usually regarded as the general-purpose filter for both ortho and pan film. This filter should be the first the beginner buys for his LEICA.



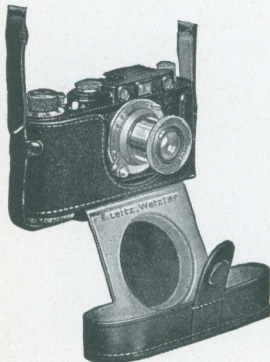






No. 51,505

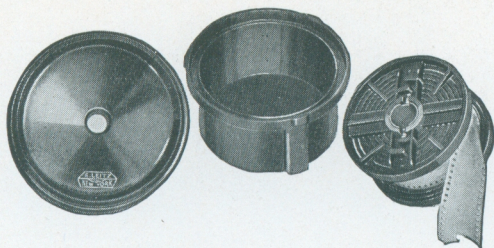
**Exposure meter:** Without correct exposures your LEICA pictures can never be completely successful. Make sure of the quality of your negatives by using a Weston LEICAMETER exposure meter. Small, compact, extremely accurate, and durable, the LEICA-METER frees you from all worry about exposure problems.



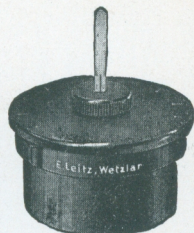
No. 53,010

**Carrying Case:** The LEICA owner is justly proud of the appearance of his LEICA, and therefore keeps, carries, and uses it in the popular Eveready case. The popularity of this type of case lies in the fact that the camera need not be removed for use—the cover and front merely open up, permitting the lens to project outward. The camera is gotten ready instantly when kept in an Eveready case. It is small—hardly larger than the camera itself—hence never in the way. Complete protection at all times is afforded the LEICA.





No. 56,400



No. 56,490

**Developing Tank:** Not until the LEICA owner does his own developing and enlarging can he know the delights of bringing his photographic activities through the various processes. He only then begins to fully understand the underlying principles involved, and as a result his work with the LEICA constantly improves, yielding a larger return in pleasure and contentment. Two developing tanks are supplied: the REELO, and the CORREX. Both are excellent, and the LEICA owner makes no mistake by securing



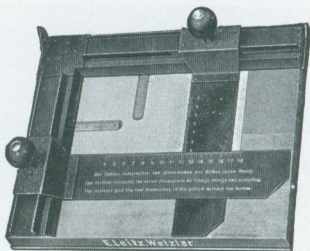




# **HALL OF ELEPHANTS—NEBRASKA STATE MUSEUM—A PANORAM**

How the picture was made . . . 50mm f:3.5 ELMAR  
DuPont Superior Film. Seven separate neg

**Paper Easel:** Because paper easels come in various sizes and styles, they are not sold as part of the enlarger unit. Listed separately, they enable the LEICA owner to make a suitable selection for his individual purposes. The LEICA paper easels are equipped with adjustable metal masking bands with which uniform white borders on the prints can be automatically obtained.



No. 61,310

**Orange Filter:** In enlarging it often becomes desirable to focus the projected image directly upon the sensitized paper on the paper easel. This cannot be done except with the aid of the special orange enlarging filter which attaches to the enlarger, and swings under the enlarger lens.

**Note:** Please refer to the catalog listing at the rear of this booklet or write for additional accessory literature.





LEICA PICTURE MADE BY DR. A. L. LUGN, LINCOLN, NEBRASKA.  
as with diaphragm set at  $f:12.5$ , 2 minutes exposure,  
is used to make the complete panorama view.

## LEICA INFORMATION SERVICE

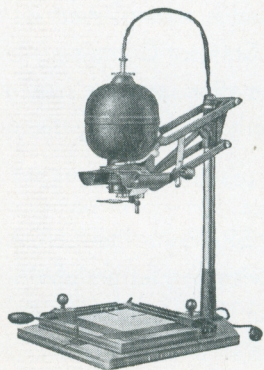
LEICA PHOTOGRAPHY, the valuable and interesting monthly magazine which has done much to stimulate and improve miniature photography in America comes to you every month, FREE, when you purchase a LEICA. This fascinating magazine is now in its fifth year of existence and has welded a strong bond between all LEICA owners in the United States. Containing a wealth of valuable and inspirational information and assistance every month, it is looked forward to eagerly by its many thousands of readers.

In addition to receiving LEICA PHOTOGRAPHY the LEICA owner is entitled to the free service and advice on matters photographic which is rendered promptly by our correspondence department. Whatever problem you encounter a letter outlining your troubles will bring you an illuminating, helpful reply.





either one of them. Developing LEICA films with one of these tanks is economical, sure, rapid, and highly successful.



No. 60,450  
**FOCOMAT Enlarger**

**Enlarger:** The VALOY and FOCOMAT enlargers, designed expressly for LEICA negatives, are superior instruments far ahead of their time, incorporating as they do the very latest innovations which have proved successful in the enlarging of miniature negatives. The VALOY and FOCOMAT enlargers are basically similar, but the latter provides for automatic focusing which is a decided convenience, especially when any quantity of work is contemplated. (U. S. Patent 1,930,431.)







So when you purchase a LEICA, you really get more than the camera—you get a life-time service and a magazine which will help you to more interesting and better results as time goes on. You will discover that photography with the LEICA is inexhaustable.

## TESTIMONIALS

Every day brings wonderful letters of commendation to our desks from people in all walks of life. When important, busy people take time off to write about their satisfaction of the LEICA camera, it means a good deal. We could fill a volume with such letters, but append here only a few which go to show the various ways in which the LEICA is being successfully used.

### Easy to Operate

"The ease of operation, economy, and splendid results make the LEICA the ideal camera for me."—S. L., Buffalo, N. Y.

### Durability of the LEICA

"My LEICA Model D which was lost July 24, 1935, while touring the Northwest, was found near Bliss, Idaho on March 20, after having been exposed to the elements for 8 months. I was astonished to find that it is apparently not damaged. The summer sun heats the basalt lave of the Snake River Valley to a high temperature, and in the winter zero weather is common. There are occasional rains and snows. My LEICA has therefore withstood temperatures ranging through nearly 200° F."—H. P. Z., Detroit, Mich.

### Sharp Enlargements

"My LEICA outfit produces enlargements of contact sharpness and quality. Why should I use a larger and more expensively operated camera?"—A. N. U., Seattle, Washington.







## The Ultimate

"Your LEICA, however, is the ULTIMATE beyond which it would be impossible to conjecture greater perfection. Three F's describe it best: Faultless, Flawless, Final."—H. M., Elmhurst, L. I.

## None Can Compare

"I have seen many amateur photos, but have as yet seen none to compare with the splendid prints made with the LEICA".—J. v. A., St. Louis, Mo.

## Like a Watch

"As a watchmaker I can appreciate the fine workmanship in a LEICA. It is made as fine as any watch and is just as accurate in its job."—D. E. K., Howell, Mich.

## Gives Pleasure

"I have been an owner of a LEICA since 1927 and it has given me more pleasure than any other single material object I have ever owned."—N. W. D., Rockingham, N. C.

## First Experience

"Will never forget my first experience with a LEICA because of one outstanding feature. Using a borrowed camera last year (1935) I shot a full roll of film at the Indianapolis 500 mile race last Decoration Day. Started at 8 A. M., finished about 6 P. M. Speeds, fastest to slowest, all stops, guessing distance and everything else, rain and bright sun, I got 37 pictures which gave perfect  $3\frac{1}{4} \times 4\frac{1}{4}$  enlargements, and I never took 37 successive perfect pictures before in my life."—J. E. G., Lexington, Ky.

## A Lovely Camera

"I have dabbled in photography for a few years but never heaped thorough enjoyment from it until I started to use the LEICA. It is truly a lovely little camera."—E. A. B., Buffalo, N. Y.







# PARTIAL LISTING OF LEICA CAMERAS AND ACCESSORIES

**Prices subject to change without notice.**

For items and accessories not listed here, please write to  
E. Leitz, Inc. . . . . 730 Fifth Ave., New York City

## LEICA CAMERAS

| Cat. No. and<br>Code Word        |  | Price           |
|----------------------------------|--|-----------------|
| <b>49,950</b><br>LU00B           | <b>LEICA AUTOFOCAL CAMERA MODEL G</b> , complete with focal plane shutter with speeds from <b>1 to 1/1000th second</b> , built-in focusing range finder, special 1½X magnifying eyepiece for range finder, eyelets for special strap, supplied with camera, 10 in. cable release and one film magazine, <b>chrome finish, without lens or case</b> ..... | <b>\$120.00</b> |
| <b>49,955</b><br>LU00X           | <b>LEICA AUTOFOCAL CAMERA MODEL G</b> , same as No. 49,950 but with <b>XENON 50mm focus f:1.5 lens</b> .....   | <b>300.00</b>   |
| <b>49,960</b><br>LI00N           | <b>LEICA AUTOFOCAL CAMERA MODEL G</b> , same as No. 49,950 but with <b>SUMMAR 50mm focus f:2 lens</b> .....  | <b>213.00</b>   |
| <b>49,970</b><br>LE00R           | <b>LEICA AUTOFOCAL CAMERA MODEL G</b> , same as No. 49,950 but with <b>ELMAR 50mm focus f:3.5 lens</b> .....   | <b>168.00</b>   |
| <b>50,000</b><br>LYDRO           | <b>LEICA AUTOFOCAL CAMERA MODEL F</b> , complete with focal plane shutter with speeds from <b>1 to 1/500th second</b> , built-in focusing range finder, special 1½X magnifying eyepiece for range finder, eyelets for special strap, supplied with camera, 10 in. cable release, and one film magazine, <b>black finish, without lens or case</b> .....  | <b>102.00</b>   |
| <b>50,010</b><br>LYDRO-<br>CHROM | <b>LEICA AUTOFOCAL CAMERA MODEL F</b> , same as No. 50,000 but <b>chrome finish</b> .....  | <b>108.00</b>   |
| <b>50,015</b><br>LYSUM           | <b>LEICA AUTOFOCAL CAMERA MODEL F</b> , same as No. 50,000 but with <b>SUMMAR 50mm focus f:2 lens</b> .....  | <b>195.00</b>   |
| <b>50,020</b><br>LYMAR           | <b>LEICA AUTOFOCAL CAMERA MODEL F</b> , same as No. 50,000 but with <b>ELMAR 50mm focus f:3.5 lens</b> .....   | <b>150.00</b>   |
| <b>50,030</b><br>LYKAN           | <b>LEICA AUTOFOCAL CAMERA MODEL D</b> , with focal plane shutter with speeds for <b>1/20 to 1/500th second</b> , built-in range finder, coupling for automatic focusing, 10 in. cable release and one film magazine, <b>black finish, without lens or case</b> ...   | <b>81.00</b>    |
| <b>50,035</b><br>LYKAN-<br>CHROM | <b>LEICA AUTOFOCAL CAMERA MODEL D</b> , same as No. 50,030 but <b>chrome finish</b> .....  | <b>87.00</b>    |
| <b>50,040</b><br>LYKUP           | <b>LEICA AUTOFOCAL CAMERA MODEL D</b> , same as No. 50,030, but with <b>ELMAR 50mm focus f:3.5 lens</b> .....  | <b>120.00</b>   |



**Cat. No. and  
Code Word**

**Price**

|                                  |   |                |
|----------------------------------|---|----------------|
| <b>50,050</b><br>LYSTA           | <b>LEICA CAMERA MODEL E</b> , complete with focal plane shutter with speeds from 1/20 to 1/500th second, special horizontal detachable range finder, <b>ELMAR</b> 50mm focus, f:3.5 lens, and one film magazine, <b>black finish, without case.....</b> | <b>\$94.50</b> |
| <b>50,052</b><br>LYSTA-<br>CHROM | <b>LEICA CAMERA MODEL E</b> , same as No. 50,050 but <b>chrome finish .....</b>   | <b>102.00</b>  |
| <b>50,055</b><br>LEMAX           | <b>LEICA CAMERA MODEL E</b> , same as No. 50,050 but without the special horizontal detachable range finder.....  | <b>\$4.00</b>  |
| <b>50,057</b><br>LEMAX-<br>CHROM | <b>LEICA CAMERA MODEL E</b> , same as No. 50,055, but <b>chrome finish .....</b>  | <b>90.00</b>   |

## LEICA LENSES

All lenses except Nos. 50,500, 50,520 and 50,540 are supplied with the coupling mount for use with the built-in range finders on the Model D, F and G cameras. These lenses can also be used with the Model E LEICA.

Some lenses have a small focusing mark for use with Infra-Red films and filters. The VIDOM Universal View Finder may be used with all LEICA lenses except Nos. 50,290, 50,500 and 50,520.

NOTE: ALL LEICA LENSES HAVE A DEPTH OF FOCUS SCALE BUILT INTO THE LENS MOUNT.

|                        |   |              |
|------------------------|---|--------------|
| <b>50,290</b><br>HOOPY | <b>LEITZ Anastigmat HEKTOR</b> , 28mm focus, f:6.3, (extremely wide angle lens), angle of view 76°, minimum focusing distance 3.5 ft., in focusing mount..... | <b>66.00</b> |
|------------------------|---|--------------|

NOTE: SEE NO. 51,595 OR 51,596 FOR SPECIAL VIEW FINDER.

|                        |   |              |
|------------------------|---|--------------|
| <b>50,310</b><br>EKURZ | <b>LEITZ Anastigmat ELMAR</b> , 35mm focus, f:3.5, (wide angle lens), angle of view 65°, minimum focusing distance 3.5 ft., in focusing mount ..... | <b>54.00</b> |
|------------------------|---|--------------|

NOTE: SEE NO. 51,600 FOR SPECIAL VIEW FINDER.

|                        |  |              |
|------------------------|--|--------------|
| <b>50,320</b><br>ELMAR | <b>LEITZ Anastigmat ELMAR</b> , 50mm focus, f:3.5, (standard lens), angle of view 48°, minimum focusing distance 3.5 ft., in collapsible focusing mount..... | <b>48.00</b> |
|------------------------|--|--------------|

|                        |  |              |
|------------------------|--|--------------|
| <b>50,350</b><br>HEKTO | <b>LEITZ Anastigmat HEKTOR</b> , 50mm focus, f:2.5, (speed lens), angle of view 48°, minimum focusing distance 3.5 ft., in collapsible focusing mount..... | <b>66.00</b> |
|------------------------|--|--------------|

|                        |  |              |
|------------------------|--|--------------|
| <b>50,360</b><br>SUMUS | <b>LEITZ Anastigmat SUMMAR</b> , 50mm focus, f:2, (super-speed lens), angle of view 48°, minimum focusing distance 3.5 ft., in collapsible focusing mount..... | <b>93.00</b> |
|------------------------|--|--------------|

|                        |   |               |
|------------------------|---|---------------|
| <b>50,365</b><br>XEMOO | <b>LEITZ Anastigmat XENON</b> , 50mm focus f:1.5 (extreme speed lens), angle of view 48°, minimum focusing distance 3.5 ft., in focusing mount (non-collapsible)..... | <b>180.00</b> |
|------------------------|---|---------------|

|                        |  |               |
|------------------------|--|---------------|
| <b>50,390</b><br>HEGRA | <b>LEITZ Anastigmat HEKTOR</b> , 73mm focus, f:1.9, (ultra-speed lens), angle of view 34°, minimum focusing distance 5 ft., in special spiral focusing mount which does not require rotation of lens when being focused, including special sunshade..... | <b>171.00</b> |
|------------------------|--|---------------|



**Cat. No. and  
Code Word**

**Price**

|                        |   |                |
|------------------------|---|----------------|
| <b>50,410</b><br>ELANG | <b>LEITZ Anastigmat ELMAR</b> , 90mm focus, f:4, (speedy distance lens), angle of view 27°, minimum focusing distance 3.5 ft., in focusing mount.....   | <b>\$72.00</b> |
| <b>50,415</b><br>TOODY | <b>LEITZ Anastigmat THAMBAR</b> , 90mm focus f:2.2, (soft focus lens of highest speed for artistic portrait photography), angle of view 27°, minimum focusing distance 3.5 ft., in focusing mount, including special sunshade.....  | <b>129.00</b>  |
| <b>50,430</b><br>ELZEN | <b>LEITZ Anastigmat ELMAR</b> , 105mm focus, f:6.3, (distance lens of light weight for landscape photography), angle of view 24°, minimum focusing distance 10 ft., in focusing mount, including special sunshade.....  | <b>58.50</b>   |
| <b>50,460</b><br>HEFAR | <b>LEITZ Anastigmat HEKTOR</b> , 135mm focus, f:4.5, (lens for increased distances), embodying the HEKTOR optical principles in a distance lens, yielding exceptional results, angle of view 19°, minimum focusing distance 5 ft., in focusing mount .....  | <b>108.00</b>  |
| <b>50,500</b><br>OTPLO | <b>LEITZ Anastigmat TELYT</b> , 200mm focus, f:4.5 (full telephoto lens of highest definition, free from distortion), angle of view 12°, minimum focusing distance 10 ft., in focusing mount, including special sunshade.....   | <b>120.00</b>  |
|                        | NOTE: THE TELYT LENS NO. 50,500 CAN ONLY BE USED WITH MIRROR REFLEX HOUSING NO. 50,510.   |                |
| <b>50,510</b><br>PLOOT | <b>Mirror Reflex Housing</b> , complete, with ground glass focusing screen, magnifying arrangement, two magnifiers and double cable release unit .....  | <b>99.00</b>   |
| <b>50,520</b><br>TOOLP | <b>LEITZ Anastigmat TELYT</b> , 200mm focus, f:4.5, (No. 50,500), complete with Mirror Reflex Housing No. 50,510.....   | <b>219.00</b>  |
|                        | It is recommended that case No. 53,225 be ordered with the TELYT lens outfit No. 50,520.  |                |
| <b>50,530</b><br>MOOSP | <b>Intermediate Extension Collar</b> , 15mm. for use with TELYT lens No. 50,500 (the extension ring No. 50,530 or multiple units thereof, are recommended for use with TELYT No. 50,500 when it is desired to use this lens for "close up" photography at less than 10 ft.).....                      | <b>1.95</b>    |
| <b>50,540</b><br>OHEBO | <b>LEITZ Anastigmat HEKTOR</b> , 135mm focus, f:4.5, angle of view 19°, minimum focusing distance 5 ft., in <b>short</b> focusing mount, without coupling to the range finder (this lens can only be used with the mirror reflex housing No. 50,510, or with the intermediate collar No. 50,550)..... | <b>94.50</b>   |
| <b>50,550</b><br>ZOOKE | <b>Intermediate Collar with Automatic Coupling for LEICA range finder</b> (with this Collar the HEKTOR lens No. 50,540 may be used in the same manner as the regular HEKTOR 135mm lens No. 50,460).....   | <b>27.00</b>   |

## LEICA FILTERS

NOTE: ALL LEICA FILTERS ARE OF SOLID GLASS IN WHICH THE COLOR IS INHERENT. THEY MAY THEREFORE BE USED UNDER ALL CLIMATIC CONDITIONS AND RETAIN THEIR ORIGINAL COLOR.

**19mm Filters in screw-in mounts for LEICA lenses ELMAR 35 and 50mm only:**

|                        |   |             |
|------------------------|---|-------------|
| <b>51,000</b><br>FIXTA | <b>Yellow Filter O</b> (very light) ..... | <b>2.70</b> |
| <b>51,005</b><br>FIRHE | <b>Yellow Filter I</b> (light) .....      | <b>2.70</b> |



| <b>Cat. No. and<br/>Code Word</b>  |   | <b>Price</b>  |
|--|---|---------------|
| <b>51,010</b><br>FIRMY   | <b>Yellow Filter II (medium)</b> .....                          | <b>\$2.70</b> |
| <b>51,012</b><br>FINUS   | <b>Yellow Filter III (dark)</b> .....                           | <b>2.70</b>   |
| <b>51,013</b><br>FIORE   | <b>U. V. (ultra violet) Protection Filter, factor: 2x</b> ..... | <b>2.70</b>   |
| <b>51,014</b><br>FIXIO   | <b>Panchromatic (green) Filter, factor: 2x to 3x</b> .....      | <b>3.30</b>   |
| <b>51,015</b><br>FCZOO   | <b>Infra Red Filter I (light)</b> .....                         | <b>3.30</b>   |
| <b>51,016</b><br>FIBOB   | <b>Infra Red Filter II (medium)</b> .....                       | <b>3.30</b>   |
| <b>34mm Filters in slip-on mounts for Leica lenses: ELMAR 35mm, ELMAR 50mm, HEKTOR 50mm, SUMMAR 50mm, ELMAR 90mm, ELMAR 105mm, HEKTOR 135mm and HEKTOR 135mm lens in short focusing mount for use with mirror reflex housing. When using the ELMAR 105mm, f:6.3 lens, the filter is mounted over the sunshade.</b> |   |               |
| <b>51,020</b><br>FIHEL   | <b>Yellow Filter O (very light)</b> .....                       | <b>4.20</b>   |
| <b>51,030</b><br>FIGRO   | <b>Yellow Filter I (light)</b> .....                            | <b>4.20</b>   |
| <b>51,040</b><br>FIGAM   | <b>Yellow Filter II (medium)</b> .....                          | <b>4.20</b>   |
| <b>51,050</b><br>QCPOO   | <b>Yellow Filter III (dark)</b> .....                           | <b>4.20</b>   |
| <b>51,060</b><br>FIRAD   | <b>Graduated Yellow Sky Filter</b> .....                        | <b>5.10</b>   |
| <b>51,070</b><br>FIOLA   | <b>U. V. (ultra violet) Protection Filter, factor: 2x</b> ..... | <b>4.20</b>   |
| <b>51,080</b><br>FIPOS   | <b>Panchromatic (green) Filter, factor: 2x to 3x</b> .....      | <b>4.80</b>   |
| <b>51,085</b><br>FEDOO   | <b>Infra Red Filter I, (light)</b> .....                        | <b>4.80</b>   |
| <b>51,090</b><br>FIKYB   | <b>Infra Red Filter II, (medium)</b> .....                      | <b>4.80</b>   |
| <b>30mm Filters in screw-in mounts for Leica lenses: Hektor 28mm, Summar 50mm, Elmar 90mm, Hektor 135mm and Hektor 135mm lens in short focusing mount for use with mirror reflex housing.</b>  |   |               |
| <b>51,091</b><br>FIMOO   | <b>Yellow Filter O, (very light)</b> .....                      | <b>3.45</b>   |
| <b>51,092</b><br>FIIOC   | <b>Yellow Filter I, (light)</b> .....                           | <b>3.45</b>   |
| <b>51,093</b><br>FAVOO   | <b>Yellow Filter II, (medium)</b> .....                         | <b>3.45</b>   |
| <b>51,094</b><br>QBOOE   | <b>Yellow Filter III, (dark)</b> .....                          | <b>3.45</b>   |



**Cat. No. and  
Code Word**

|                         |   | <b>Price</b>  |
|-------------------------|---|---------------|
| <b>51,095</b><br>FB00K  | <b>U. V. (ultra violet) Protection Filter, factor: 2x.....</b>                          | <b>\$3.45</b> |
| <b>51,096</b><br>FBX00  | <b>Panchromatic (green) Filter, factor: 2x to 3x.....</b>                               | <b>3.90</b>   |
| <b>51,096a</b><br>FNO0Y | <b>Infra Red Filter I, (light) .....</b>  | <b>3.90</b>   |
| <b>51,097</b><br>FC00I  | <b>Infra Red Filter II, (medium) .....</b>  | <b>3.90</b>   |
|                         | <b>39mm Filters in screw-in mounts for Hektor 73mm lens.</b>                            |               |
| <b>51,100</b><br>FIWAS  | <b>Yellow Filter O, (very light).....</b>   | <b>4.20</b>   |
| <b>51,110</b><br>FIREG  | <b>Yellow Filter I, (light).....</b>  | <b>4.20</b>   |
| <b>51,120</b><br>FIWIG  | <b>Yellow Filter II, (medium).....</b>  | <b>4.20</b>   |
| <b>51,130</b><br>FILXA  | <b>Yellow Filter III, (dark).....</b>   | <b>4.20</b>   |
| <b>51,140</b><br>FIWET  | <b>U. V. (ultra violet) Protection Filter, factor: 2x.....</b>                          | <b>4.20</b>   |
| <b>51,150</b><br>FIGIL  | <b>Graduated Yellow Sky Filter, in slip-on mount.....</b>                               | <b>6.90</b>   |
| <b>51,160</b><br>FIRYX  | <b>Panchromatic (green) Filter, factor: 2x to 3x.....</b>                               | <b>5.10</b>   |
| <b>51,168</b><br>FG00E  | <b>Infra Red Filter I, (light) .....</b>  | <b>5.10</b>   |
| <b>51,170</b><br>FIPLO  | <b>Infra Red Filter II, (medium).....</b>   | <b>5.10</b>   |
|                         | <b>48mm Filters in screw-in mounts for Leica lenses: Thambar 90mm, and Telyt 200mm.</b> |               |
| <b>51,171</b><br>P00AH  | <b>Yellow Filter O, (very light).....</b>   | <b>5.10</b>   |
| <b>51,172</b><br>P00BV  | <b>Yellow Filter I, (light).....</b>  | <b>5.10</b>   |
| <b>51,173</b><br>P00CI  | <b>Yellow Filter II, (medium).....</b>  | <b>5.10</b>   |
| <b>51,174</b><br>P00FX  | <b>U. V. (ultra violet) Protection Filter, factor: 2x.....</b>                          | <b>5.10</b>   |
| <b>51,175</b><br>PG00X  | <b>Graduated Yellow Sky Filter, in slip-on mount.....</b>                               | <b>8.40</b>   |
| <b>51,175a</b><br>P00DW | <b>Panchromatic (green) Filter, factor: 2x to 3x.....</b>                               | <b>6.30</b>   |
| <b>51,176</b><br>P00GL  | <b>Infra Red Filter I, (light).....</b>   | <b>6.30</b>   |
| <b>51,177</b><br>P00EK  | <b>Infra Red Filter II, (medium).....</b>   | <b>6.30</b>   |
| <b>51,185</b><br>X00AM  | <b>Yellow Filter O, (very light).....</b>   | <b>6.60</b>   |
| <b>51,186</b><br>X00BZ  | <b>Yellow Filter I, (light).....</b>  | <b>6.60</b>   |



Cat. No. and  
Code Word

Price

|                        |   |               |
|------------------------|---|---------------|
| <b>51,187</b><br>X00CN | <b>Yellow Filter II, (medium)</b> .....                         | <b>\$6.60</b> |
| <b>51,189</b><br>X00FB | <b>U. V. (ultra violet) Protection Filter, factor: 2x</b> ..... | <b>6.60</b>   |
| <b>51,191</b><br>X00GP | <b>Panchromatic (green) Filter, factor: 2x to 3x</b> .....      | <b>7.95</b>   |
| <b>51,192</b><br>X00IQ | <b>Infra Red Filter I, (light)</b> .....                        | <b>7.95</b>   |
| <b>51,193</b><br>X00KD | <b>Infra Red Filter II, (medium)</b> .....                      | <b>7.95</b>   |

## CAMERA ACCESSORIES

|                                  |   |              |
|----------------------------------|---|--------------|
| <b>51,505</b><br>WESTO           | <b>WESTON LEICAMETER Model C (No. 650), new model, with the sensitivity increased three times over the previous model, direct reading scale, simplified exposure dial; metal calculator disc gives correct readings for the greatest range of light intensities. Without case</b> ..... | <b>22.50</b> |
| <b>51,506</b><br>WESCA           | <b>Soft Leather Case, with zipper for LEICAMETER</b> .....  | <b>1.75</b>  |
| <b>51,507</b><br>CALFA           | <b>Calf's Letter Case for LEICAMETER</b> .....  | <b>1.75</b>  |
| <b>51,530</b><br>VIDOM           | <b>VIDOM Universal View Finder, with adjustable masking aperture and parallax adjustment, for use with all LEICA Cameras and Lenses, except lenses Nos. 50,290, 50,500 and 50,520</b> .....   | <b>22.80</b> |
| <b>51,535</b><br>VIDOM-<br>CHROM | <b>VIDOM Universal View Finder, same as No. 51,530, but with chrome finish</b> .....  | <b>23.40</b> |
| <b>51,560</b><br>AUFSU           | <b>Reflecting View Finder, for LEICA Camera, for use with all 50mm lenses</b> .....   | <b>9.00</b>  |
| <b>51,562</b><br>AY00C           | <b>Reflecting View Finder, same as No. 51,560, but with negative auxiliary lens, for use with the 35mm and 50mm LEICA lenses (when the negative lens is swung into position use the 35mm lens, when swung out use the 50mm lenses)</b> .....  | <b>15.00</b> |
| <b>51,565</b><br>AH00T           | <b>Reflecting View Finder, similar to No. 51,562, for use with HEKTOR 28mm and 50mm lenses</b> .....  | <b>15.00</b> |
| <b>51,570</b><br>RASUK           | <b>Direct Vision View Finder, with parallax adjustment, special wire type metal finder accommodating the fields of all LEICA lenses of 35mm, 50mm, 73mm and 90mm focus</b> .....  | <b>8.10</b>  |
| <b>51,571</b><br>RASUK-<br>CHROM | <b>Direct Vision View Finder, same as No. 51,570, but chrome finish</b> .....   | <b>9.00</b>  |
| <b>51,580</b><br>RAMET           | <b>Mask for RASUK Direct Vision Frame Finder for giving fields of the 105 and 135mm lenses</b> .....  | <b>.90</b>   |
| <b>51,581</b><br>RAMET-<br>CHROM | <b>Mask for RASUK Direct Vision Frame Finder, same as No. 51,580, but chrome finish</b> .....   | <b>1.20</b>  |
| <b>51,590</b><br>RASAL           | <b>Direct Vision View Finder, complete with mask giving fields of view of all LEICA lenses (combination of RASUK and RAMET) of 35mm, 50mm, 73mm, 90mm, 105mm and 135mm focus</b> .....  | <b>9.00</b>  |
| <b>51,591</b><br>RASAL-<br>CHROM | <b>Direct Vision View Finder, complete, same as No. 51,590, but chrome finish</b> .....   | <b>10.20</b> |



**Cat. No. and  
Code Word**

|                                  |   | <b>Price</b>   |
|----------------------------------|---|----------------|
| <b>51,595</b><br>SU00Q           | <b>Special View Finder</b> for 28mm <b>HEKTOR</b> lens No. 50,290....   | <b>\$19.20</b> |
| <b>51,596</b><br>SU00Q-<br>CHROM | <b>Special View Finder</b> , same as No. 51,595, but <b>chrome finish</b> ..  | <b>21.00</b>   |
| <b>51,600</b><br>WEISU           | <b>Special View Finder</b> for 35mm <b>ELMAR</b> lens.....  | <b>7.20</b>    |
| <b>51,605</b><br>WEISU-<br>CHROM | <b>Special View Finder</b> , same as No. 51,600, but <b>chrome finish</b> ..  | <b>8.40</b>    |
| <b>51,610</b><br>SUW00           | <b>Special View Finder</b> for 50mm lenses, for use on single exposure camera No. 50,110.....   | <b>5.40</b>    |
| <b>51,620</b><br>WINKO           | <b>WINKO Angle View Finder</b> , for <b>LEICA</b> Camera Models A, C and E, for use with 50mm lenses.....   | <b>9.00</b>    |
| <b>51,630</b><br>WINTU           | <b>WINTU Angle View Finder</b> , for <b>LEICA</b> Camera Models D, F and G, for use with 50mm lenses.....   | <b>10.80</b>   |
| <b>51,635</b><br>WINTU-<br>CHROM | <b>WINTU Angle View Finder</b> , same as No. 51,630, but in <b>chrome finish</b> .....  | <b>12.00</b>   |
| <b>51,670</b><br>FOKOS           | <b>Short Base Range Finder FOKOS</b> , for use on Model E <b>LEICA</b> Camera (turret clip included with Model E <b>LEICA</b> No. 50,055 and 50,057) .....  | <b>10.50</b>   |
| <b>51,675</b><br>FOKOS-<br>CHROM | <b>Short Base Range Finder FOKOS</b> , same as No. 51,670, but <b>chrome finish</b> .....   | <b>12.00</b>   |
| <b>51,680</b><br>HF00K           | <b>Short Base Range Finder FOKOS</b> , but with special turret clip for use on Models A, B and C <b>LEICA</b> Cameras.....  | <b>12.00</b>   |
| <b>51,682</b><br>HF00K-<br>CHROM | <b>Short Base Range Finder FOKOS</b> , same as No. 51,680, but <b>chrome finish</b> .....   | <b>13.50</b>   |
| <b>51,687a</b><br>NOOKY          | <b>Optical Short Distance Focusing Device.</b> This device allows the <b>LEICA</b> lenses coupled with range finder to be used at close distances between 3½ ft. and 16½ in. enabling one to focus quickly as well as accurately. The device consists of an adapter cam, to be screwed into the objective flange; the cam carries a glass wedge that projects in front of the entrance window of the range finder and serves to deflect the light rays emanating from the subject. In addition, this device is equipped with an image-field stop situated in front of the direct view finder. The stop is manipulated by means of a curve and thus serves as parallax compensation. The cam is provided with a bayonet lock accommodating the <b>LEICA</b> <b>ELMAR</b> lens 50mm focus f:3.5 No. 50,320..... | <b>30.00</b>   |
| <b>51,689</b><br>NOOKY-<br>HESUM | <b>Optical Short Distance Focusing Device</b> , same as No. 51,687a, however, for use with <b>LEICA</b> lenses <b>HEKTOR</b> 50mm f:2.5 No. 50,350 or <b>SUMMAR</b> 50mm f:2 No. 50,360.....  | <b>30.00</b>   |
| <b>51,756</b><br>SO0HN           | <b>Lens Sunshade</b> for <b>HEKTOR</b> lens 28mm.....   | <b>1.80</b>    |
| <b>51,758</b><br>FLQ00           | <b>Lens Sunshade</b> for <b>ELMAR</b> lens 35mm.....  | <b>2.10</b>    |
| <b>51,760</b><br>FISON           | <b>Lens Sunshade</b> with set screw, for <b>ELMAR</b> 50mm and 90mm and <b>HEKTOR</b> 50mm and 135mm lenses.....  | <b>1.35</b>    |
| <b>51,762</b><br>FISON-<br>CHROM | <b>Lens Sunshade</b> , same as No. 51,760, but <b>chrome finish</b> .....   | <b>1.80</b>    |

| Cat. No. and<br>Code Word        |   | Price         |
|----------------------------------|---|---------------|
| <b>51,765</b><br>S00MP           | <b>Lens Sunshade</b> , for SUMMAR 50mm lens. It is especially designed for this lens, and provides the highest efficiency....   | <b>\$2.55</b> |
| <b>51,790</b><br>FIKUS           | <b>Lens Sunshade</b> , adjustable, for ELMAR 50mm and 90mm, SUMMAR 50mm, HEKTOR 50mm and 135mm lenses. Barrel is calibrated for the various focal length lenses and may be adjusted accordingly .....   | <b>4.50</b>   |
| <b>51,796</b><br>HEB00           | <b>Automatic Slow Speed Timing Device</b> , with speeds of 1, $\frac{1}{2}$ , $\frac{1}{4}$ and $\frac{1}{8}$ second, for attaching to LEICA Cameras A, C, D and E, <b>complete, but without case</b> .....   | <b>13.50</b>  |
| <b>51,800</b><br>DIREKT          | <b>Self-Timing Device</b> for LEICA Cameras. Permits delayed action for exposures .....   | <b>3.60</b>   |
| <b>51,807</b><br>SCN00           | <b>Rapid Winder</b> , permits successive exposures with extreme speed; it consists of an especially designed LEICA base-plate that may be interchanged with the standard base-plate. The special base-plate carries a trigger which slides in a groove. The trigger is operated by pulling it along the groove, this action rewinding the shutter and moving the film to the next section. The entire operation is done with one finger, thus permitting extremely rapid action. Pictures are thus made in surprisingly quick succession—as fast as the trigger can be pulled, in fact. The right hand is free for any other camera manipulations that may be necessary. Plain finish ..... | <b>15.00</b>  |
|                                  | NOTE: All LEICA cameras bearing a serial number below 111,450 must be altered to fit the Rapid Winders Nos. 51,807 and 51,808. The charge for this conversion is \$15.00. Also LEICA cameras bearing serial numbers between 111,450 and 159,000 must be changed at a cost of \$4.50. LEICA cameras with serial numbers above 159,000 can be used directly with the Rapid Winder without any change.   |               |
| <b>51,808</b><br>SCN00-<br>CHROM | <b>Rapid Winder</b> , same as No. 51,807, <b>but chrome finish</b> .....  | <b>16.50</b>  |
| <b>51,810</b><br>VACUB           | <b>LEICA Photoflash Unit</b> , complete, with upright pillar (which accommodates batteries) with lug which fits into clip in all LEICA Cameras, set of batteries, receptacle for miniature testing lamp and standard Photoflash lamp, electrical connection for shutter release button, and folding metal reflector. This outfit is intended for use at bulb (Z) and speeds up to and including 1/30 sec.....   | <b>7.50†</b>  |
| <b>51,812</b><br>BTLOO           | <b>New LEICA Synchronized Photoflash Unit</b> , complete with upright pillar, which is attached to the tripod base by means of a special clamp; set of two batteries, separate receptacle for miniature testing lamp, special synchronizing head operating on the shutter speed dial of the LEICA Camera, including special clip placed on shutter speed dial and detachable reflector, for LEICA Cameras D, F and G.....   | <b>33.00</b>  |
| <b>51,813</b><br>BT00K           | <b>New LEICA Synchronized Photoflash Unit</b> , same as Cat. No. 51,812 but for LEICA Camera E.....   | <b>33.00</b>  |
|                                  | NOTE: LEICA Cameras having serial numbers below 100,000 will require a small shutter speed dial (now supplied with LEICA Cameras). This is supplied free of charge with the New LEICA Synchronized Photoflash Unit, on request.   |               |
| <b>51,815</b><br>BW00G           | <b>Special Battery Case</b> , for Cat. Nos. 51,812 and 51,813, which accommodates four batteries .....  | <b>6.60</b>   |
|                                  | NOTE: The Special Battery Case, accommodating four batteries, is needed when the Synchronized Photoflash Unit is used at a distance from the camera.  |               |



**Cat. No. and  
Code Word**

**Price**

|                        |  |                |
|------------------------|--|----------------|
| <b>51,817</b><br>ZUPOO | <b>Special Attachment</b> , for Cat. Nos. 51,812 and 51,813, with revolving head accommodating three Photoflash lamps, enabling the making of three Photoflash exposures in rapid succession; including three detachable reflectors.....   | <b>\$24.00</b> |
| <b>51,820</b><br>DOOLU | <b>Spirit Level (fits into clip on all LEICA Cameras)</b> .....  | <b>1.50</b>    |
| <b>51,855</b><br>OOFRC | <b>Remote Release and Shutter Winder</b> serves to operate the LEICA at distances when the presence of the operator may be disturbing, as in cases when photographing birds, wild animal life, etc. ....   | <b>18.00</b>   |
| <b>51,870</b><br>NATRA | <b>LEICA Negative Viewer and Marker</b> , with polished metal film channel, film-notching punch, and magnifying lens. Permits negatives to be seen clearly, distinctly and greatly enlarged so that detail in each is quickly noted without the necessity of placing in enlarger.....  | <b>11.10</b>   |
| <b>51,880</b><br>NAMAS | <b>Small Plate of Milk Glass</b> , with frame for attaching in front of the negative viewer (No. 51,870).....  | <b>1.50</b>    |
| <b>51,910</b><br>SPULM | <b>Take-up Spool</b> , for LEICA Cameras D, E, F or G, as well as former models A, B or C.....   | <b>.90</b>     |
| <b>51,942</b><br>AFL00 | <b>Film Winder</b> with spring clip for holding film while winding LEICA magazine spool; this Winder will also take the larger model FF spools .....   | <b>6.00</b>    |
| <b>51,950</b><br>AGRIF | <b>Hand Film Winder</b> , for use in loading LEICA magazine spools in darkroom .....   | <b>.45</b>     |
| <b>51,960</b><br>ABLON | <b>Film Trimming Guide</b> , of hinged metal, used to shape and trim ends of film for loading into film magazines.....   | <b>1.50</b>    |
| <b>51,967</b><br>ABCOO | <b>Film Cutting Knife</b> serves to cut the film while in the camera; particularly desirable in connection with the LEICA Camera FF, No. 50,070, in case.....  | <b>1.20</b>    |
| <b>51,970</b><br>FIAKU | <b>Ball Jointed Tripod Head</b> , for use when mounting LEICA Camera in any fixed position.....  | <b>2.70</b>    |
| <b>51,971</b><br>KG00N | <b>Large Ball Jointed Tripod Head</b> , similar to No. 51,970, but larger and heavier, especially recommended for the TELYT 200mm focus lens .....   | <b>7.20</b>    |
| <b>51,972</b><br>ZS00G | <b>Intermediate Socket</b> for Ball-Jointed Tripod Heads when used on tripod stands with large top plate.....  | <b>2.70</b>    |
| <b>51,975</b><br>SD00G | <b>Quick-Changing Snap-Socket Tripod Head</b> .....  | <b>3.60</b>    |
| <b>51,980</b><br>FARUX | <b>Panorama Tripod Head</b> , calibrated both for vertical and horizontal pictures with the LEICA Camera and any of the 50mm LEICA lenses. This panorama head permits the interchange of calibration rings so that perfectly matched pictures can be made with any of the LEICA lenses. Rings for other than the 50mm lenses are sold separately, see below..... | <b>6.00</b>    |
| <b>51,985</b><br>FOONW | <b>Interchangeable Calibrated Ring</b> , for use on Panorama Head No. 51,980, calibrated for 28mm lens.....  | <b>1.50</b>    |
| <b>51,990</b><br>FAROS | <b>Interchangeable Calibrated Ring</b> , for use on Panorama Head No. 51,980, calibrated for 35mm lens.....  | <b>1.50</b>    |
| <b>52,000</b><br>FAWAG | <b>Interchangeable Calibrated Ring</b> , for use on Panorama Head No. 51,980, calibrated for 73mm lens.....  | <b>1.80</b>    |
| <b>52,010</b><br>FAXIS | <b>Interchangeable Calibrated Ring</b> , for use on Panorama Head No. 51,980, calibrated for 90mm lens.....  | <b>1.80</b>    |
| <b>52,020</b><br>FASKI | <b>Interchangeable Calibrated Ring</b> for use on Panorama Head No. 51,980, calibrated for 105mm lens.....   | <b>1.80</b>    |

|                        |  |               |
|------------------------|--|---------------|
| <b>52,030</b><br>FARLY | <b>Interchangeable Calibrated Ring</b> , for use on Panorama Head No. 51,980, calibrated for 135mm lens..... | <b>\$1.50</b> |
| <b>52,035</b><br>FOOQL | <b>Interchangeable Calibrated Ring</b> , for use on Panorama Head No. 51,980, calibrated for 200mm lens..... | <b>1.50</b>   |

NOTE: ITEMS NOS. 52,030 AND 52,035 ARE ARRANGED FOR PANORAMA PHOTOGRAPHY WITH CAMERA IN HORIZONTAL POSITION, WHEN USING OBJECTIVES 135MM AND 200MM FOCUS THE PANORAMA HEAD NO. 51,980 SHOULD BE ATTACHED TO THE OBJECTIVES PROPER, WHICH HAVE A TRIPOD THREAD, AND NOT TO THE CAMERA. TO PROVIDE FOR RIGID SUPPORT, THE LARGE BALL AND SOCKET HEAD NO. 51,971 SHOULD BE MADE USE OF.

|                        |   |             |
|------------------------|---|-------------|
| <b>52,040</b><br>FIAVI | <b>Angle Bracket</b> , for convenience in attaching and leveling LEICA Camera to panorama head..... | <b>3.30</b> |
|------------------------|---|-------------|

NOTE: THE SPIRIT LEVEL NO. 51,820 WHICH IS ATTACHED TO THE ANGLE BRACKET NO. 52,040 OR DIRECTLY TO THE LEICA CAMERA SHOULD BE USED WHEN MAKING PANORAMA PICTURES.

|                        |  |             |
|------------------------|--|-------------|
| <b>52,045</b><br>TOOSF | <b>LEICA Table Tripod</b> , all metal construction, leather-faced where required to prevent scratching the camera, with leveling and tripod screws, complete, ready for use..... | <b>6.00</b> |
|------------------------|--|-------------|

## CARRYING AND PROTECTIVE CASES

|                        |   |              |
|------------------------|---|--------------|
| <b>53,010</b><br>ESNAR | <b>Eveready Case</b> , for LEICA Models A, C, D, E, F or G, with ELMAR 35mm or 50mm or HEKTOR 50mm lenses, cowhide, with neckstrap .....  | <b>7.80</b>  |
| <b>53,012</b><br>ES00R | <b>Eveready Case</b> , for LEICA Models A, C, D, E, F or G, with ELMAR 35mm or 50mm or HEKTOR 50mm lenses <b>and with Rapid Winder attached</b> .....   | <b>11.10</b> |
| <b>53,020</b><br>ESMOS | <b>Eveready Case</b> , for LEICA Model E and range finder FOKOS attached, with neck strap.....  | <b>7.80</b>  |
| <b>53,030</b><br>ESFUS | <b>Eveready Case</b> , for LEICA Models D, F and G with SUMMAR 50mm, f:2, with neck strap.....  | <b>8.10</b>  |
| <b>53,032</b><br>EPZ00 | <b>Eveready Case</b> , for LEICA Models D, F and G with SUMMAR 50mm lens <b>and with Rapid Winder attached</b> .....  | <b>11.70</b> |
| <b>53,035</b><br>EX00M | <b>Eveready Case</b> , for LEICA Models F or G with XENON 50mm f:1.5 lens .....   | <b>8.10</b>  |
| <b>53,040</b><br>ESFOO | <b>Eveready Case</b> , for LEICA Model FF, No. 50,070, cowhide, with neck strap .....   | <b>10.50</b> |
| <b>53,060</b><br>ETTRE | <b>Combination Case</b> , brown cowhide, with strap handle and shoulder strap. Space for LEICA, (Models C, D, E, F or G), three of the LEICA lenses, universal view finder, angle view finder, two front lenses, one extra film magazine and two filters .....    | <b>15.30</b> |
| <b>53,070</b><br>ETNEU | <b>Combination Case</b> , brown cowhide, with strap handle and shoulder strap. Space for LEICA (models C, D, E, F, or G), four of the LEICA lenses, universal view finder, angle view finder, three front lenses, two extra film magazines and four filters ..... | <b>16.50</b> |



|                        |  |                |
|------------------------|--|----------------|
| <b>53,080</b><br>ETGUS | <b>Combination Case</b> , brown cowhide, with strap handle and shoulder strap. Space for LEICA (Models C, D, E, F, or G), five of the LEICA lenses, universal view finder, angle view finder, three front lenses, two extra film magazines, and four filters ..... | <b>\$19.80</b> |
| <b>53,090</b><br>ETMAX | <b>Combination Case</b> , brown cowhide, with strap handle and shoulder strap. Space for LEICA (Models C, D, E, F or G), seven LEICA lenses, universal view finder, angle view finder, three front lenses, two extra film magazines, and four filters. ....        | <b>22.20</b>   |
| <b>53,100</b><br>EUSAF | <b>Soft Leather Purse Case</b> , for LEICA Models A, C, D, E, F or G, with 28mm, 35mm or 50mm lens, respectively.....  | <b>3.00</b>    |
| <b>53,102</b><br>ERDOO | <b>Soft Leather Purse Case</b> , brown, with zipper, for LEICA Camera with 50mm lens.....  | <b>3.30</b>    |
| <b>53,225</b><br>EMTOO | <b>Calf's Leather Case</b> , for TELYT lens with mirror reflex housing No. 50,520.....   | <b>16.50</b>   |

## LEICA FILM

|                        |  |             |
|------------------------|--|-------------|
| <b>56,000</b><br>FLIXY | <b>PERUTZ SPECIAL FINE GRAIN, ANTI-HALO ORTHOCHROMATIC FILM</b> (approx. 18-19° Scheiner). The finest-grained film available. 36 exposures in special metal daylight loading and unloading cartridge, hermetically sealed in lead tube .....   | <b>.99</b>  |
| <b>56,010</b><br>FUJMA | <b>PERUTZ SPECIAL FINE GRAIN, ANTI-HALO ORTHOCHROMATIC FILM</b> (approx. 18-19° Scheiner). The finest-grained film available. 30-ft. rolls.....  | <b>2.70</b> |
| <b>56,020</b><br>FLISO | <b>PERUTZ NEO-PERSENSE ORTHOCHROMATIC FILM</b> (approx. 21° Scheiner). A speedy, fine-grained film with excellent characteristics. 36 exposures in special metal daylight loading and unloading cartridge, hermetically sealed in lead tube .....  | <b>.99</b>  |
| <b>56,030</b><br>FUJLO | <b>PERUTZ NEO-PERSENSE ORTHOCHROMATIC FILM</b> (approx. 21° Scheiner). A speedy fine-grained film with excellent characteristics. 30-ft. rolls.....  | <b>2.70</b> |
| <b>56,060</b><br>FLESA | <b>PERUTZ PEROMNIA PANCHROMATIC FILM</b> (approx. 22° Scheiner). The ideal speed panchromatic film with surprisingly fine grain. 36 exposures in special metal daylight loading and unloading cartridge, hermetically sealed in lead tube .....  | <b>1.08</b> |
| <b>56,070</b><br>FLEWU | <b>PERUTZ PEROMNIA PANCHROMATIC FILM</b> (approx. 22° Scheiner). The ideal speed panchromatic film with surprisingly fine grain. 30-ft. rolls.....   | <b>3.15</b> |
| <b>56,075</b><br>FLEZI | <b>PERUTZ PERPANTIC PANCHROMATIC FILM</b> (approx. 21° Scheiner). A most excellent fine-grained panchromatic film of medium speed. Ideal for all purposes where a panchromatic film is indicated. 36 exposures in special metal daylight loading and unloading cartridge, hermetically sealed in lead tube ..... | <b>1.08</b> |
| <b>56,076</b><br>FLIDU | <b>PERUTZ PERPANTIC PANCHROMATIC FILM</b> (approx. 21° Scheiner). A most excellent fine-grained panchromatic film of medium speed. Ideal for all purposes where a panchromatic film is indicated. 30-ft. rolls.....  | <b>3.15</b> |
| <b>56,080</b><br>FIGKA | <b>DUPONT SUPERIOR PANCHROMATIC FILM</b> (approx. 24° Scheiner). A film having special fine-grain emulsion. Daylight loading and unloading cartridges of 36 exposures. ....  | <b>.85</b>  |

|                        |   |               |
|------------------------|---|---------------|
| <b>56,090</b><br>FUJEP | <b>DUPONT MICROPAN PANCHROMATIC FILM</b> (approx. 17° Scheiner). A special, fine-grained panchromatic film with excellent contrast, useful for micro and copy work, as well as general photography. Daylight loading and unloading cartridges of 36 exposures..... <b>per cartridge</b> | <b>\$ .85</b> |
| <b>56,100</b><br>FIGIX | <b>DUPONT INFRA-D FILM</b> (approx. 17° Scheiner). For special infra-red photography and effect work. Daylight loading and unloading cartridges of 36 exposures.. <b>per cartridge</b>  | <b>1.15</b>   |

## DEVELOPING APPARATUS

|                        |   |              |
|------------------------|---|--------------|
| <b>56,400</b><br>FETAN | <b>REELO All Bakelite Developing Tank, Model A</b> (for LEICA and all other 35mm cine film up to 5½ ft. lengths), complete with tank, lid, grooved reel and washing nozzle.....   | <b>7.25</b>  |
| <b>56,490</b><br>CORUN | <b>CORREX All Bakelite Developing Tank</b> , complete with reel, apron and hand agitator.....   | <b>8.40</b>  |
| <b>56,492</b><br>COSTI | <b>Hand Agitator</b> for CORREX tank.....   | <b>.45</b>   |
| <b>56,550</b><br>CORET | <b>Tank Thermometer</b> , calibrated in Fahrenheit for use with REELO or CORREX tanks .....   | <b>1.20</b>  |
| <b>56,561</b><br>AGITA | <b>Electric Agitator</b> , for A. C. (alternating current) only. New oscillating principle which assures the maximum agitation with the minimum of effort and energy. Attractively and substantially built, consisting of motor, ventilated housing, platform upon which tank is placed, and insulated cord. Complete, ready for use..... | <b>23.40</b> |
| <b>56,562</b><br>AGOTU | <b>Electric Agitator</b> , for D. C. (direct current) only. The same as No. 56,561 but for use on direct current.....   | <b>29.40</b> |
| <b>56,563</b><br>AGULI | <b>Automatic Time Switch</b> , for use for Electric Agitators Nos. 56,561 and 56,562. Bakelite housing and dial for 30-minute periods, automatic shut-off at any predetermined time interval. Complete with special plug and cord.....  | <b>4.95*</b> |
| <b>56,570</b><br>FIMAN | <b>Developing Drum Outfit</b> , complete with two glass trays, metal stand support for drum, and glass revolving drum. Especially useful for developing natural color film and positive film prints where it is necessary to observe the development of the image on the film.....  | <b>10.50</b> |
| <b>56,640</b><br>FILEP | <b>Developer, Perutz Fine-Grain Compensating</b> , packed ten tubes per carton .....  | <b>2.70</b>  |
| <b>56,645</b><br>ULTRA | <b>Developer, Tetenal, Ultrafin S-F</b> .....   | <b>.90</b>   |

## STEREO APPARATUS

|                        |  |              |
|------------------------|--|--------------|
| <b>57,200</b><br>VOSTN | <b>STEREOLY Attachment</b> , for taking stereo pictures with the LEICA Models D, F or G, <b>in case</b> .....                                | <b>39.00</b> |
| <b>57,210</b><br>VORSA | <b>STEREOLY Attachment</b> , for taking stereo pictures with the LEICA Models A, C or E, <b>in case</b> .....                                | <b>39.00</b> |
| <b>57,220</b><br>VORUF | <b>Arm for STEREOLY Attachment</b> (offered for use of No. 57,210 in connection with LEICA Models D, F, G or conversion)....                 | <b>7.20</b>  |
| <b>57,230</b><br>VOTRA | <b>STEREO Viewer</b> , for LEICA pictures, taken with the STEREOLY Attachments No. 57,200 or No. 57,210, without stand, <b>in case</b> ..... | <b>42.00</b> |
| <b>57,240</b><br>VOTIV | <b>Stand</b> , serving as support for Stereo Viewer No. 57,230.....  | <b>4.20</b>  |
| <b>57,250</b><br>PIATE | <b>Stereo Slide Bar</b> , for use when making two separate LEICA negatives .....   | <b>6.00</b>  |

(SEE PAGE 56 FOR STEREO COVER GLASS PLATES)



# COPY AND REPRODUCTION APPARATUS

Cat. No. and  
Coe Word

Price

|  |   |                |
|--|---|----------------|
| <b>57,300</b><br>OORES   | <b>Rotating Focusing Copying Attachment</b> , consisting of Rotating Stage which holds the LEICA Camera and ground glass focusing screen with clear glass center.....   | <b>\$40.50</b> |
| NOTE: THE COPY ATTACHMENT NO. 57,300 CAN BE FOCUSED AT ANY DISTANCE INCLUDING INFINITY.  |   |                |
| <b>57,310</b><br>GOORM   | <b>Sliding Arm</b> , for attaching the Rotating Focusing Copying Attachment No. 57,300 to upright of enlarger.....  | <b>13.20</b>   |
| <b>57,320</b><br>GRBOO   | <b>Focusing Copying Attachment</b> , similar to No. 57,300 but with a dove-tailed slide arrangement, for use with LEICA Model FF .....  | <b>42.00</b>   |
| <b>57,330</b><br>COARM   | <b>Sliding Arm</b> , for attaching the focusing copying attachment No. 57,320 to upright of enlarger.....   | <b>13.20</b>   |
| NOTE: THE FOCUSING COPYING ATTACHMENTS NOS 57,300 AND 57,320 TOGETHER WITH THE SLIDING ARMS CAN BE ATTACHED TO THE VERTICAL UPRIGHT OF THE LEICA UNIVERSAL ENLARGERS. IF AN ENLARGER IS NOT AVAILABLE THE BASEBOARD AND UPRIGHT MAY BE PURCHASED SEPARATELY. |   |                |
| <b>57,340</b><br>LOOCG   | <b>Focusing Magnifier 5X</b> , for use on Copying Attachments Nos. 57,300, 57,320, 57,600, 57,605, 57,610 and 57,615.....   | <b>7.20</b>    |
| <b>57,350</b><br>LOOFV   | <b>Large Wide-field Focusing Magnifier 5X</b> , permitting to view the entire field of the image at one glance, for use on copying attachments Nos. 57,300, 57,320, 57,600, 57,605, 57,610, and 57,615 .....  | <b>15.00</b>   |
| <b>57,352</b><br>LOOGI   | <b>Large Wide Field Angular Focusing Magnifier 5X</b> , similar to No. 57,350, but with reflecting mirror permitting to view the ground glass focusing screen in horizontal direction....   | <b>21.00</b>   |
| <b>57,355</b><br>LOOWH   | <b>Focusing Magnifier 30X</b> , for increased exactitude in the focusing, for use on copying attachments Nos. 57,300, 57,320, 57,605 and 57,615 .....   | <b>14.40</b>   |
| <b>57,360</b><br>ZWTOO   | <b>Intermediate Focusing Mount</b> , for conveniently focusing the 50mm ELMAR lens when used with copying attachments Nos. 57,300 and 57,320. With this focusing mount the lens can be focused at any distance between $\infty$ and 16.5 in. At 16.5 in. the reduction is 1/6 ..... | <b>9.00</b>    |
| <b>57,365</b><br>ZWTOO-<br>HESUM   | <b>Intermediate Focusing Mount</b> , same as No. 57,360, but for use with HEKTOR and SUMMAR lenses.....   | <b>9.00</b>    |
| <b>57,370</b><br>BOOXZ   | <b>Extension Tube (7mm) "B"</b> , giving reductions of from 1/3 to 1/2.5, or in conjunction with intermediate focusing mounts Nos. 57,360 and 57,365, from 1/5 to 1/4. For use on Nos. 57,300 and 57,320 .....  | <b>1.20</b>    |
| <b>57,380</b><br>MOOBG   | <b>Extension Tube (16mm) "M.1:2"</b> , giving reductions in the ratio of 1/2. For use on Nos. 57,300 and 57,320.....  | <b>1.50</b>    |
| <b>57,390</b><br>MOODH   | <b>Extension Tube (24.5mm) "M.1:1.5"</b> , giving reductions in the ratio of 1/1.5. For use on Nos. 57,300 and 57,320.....  | <b>1.80</b>    |
| <b>57,400</b><br>MOOGW   | <b>Extension Tube (41mm) "M.1:1"</b> , giving reproductions in natural size. For use on Nos. 57,300 and 57,320.....   | <b>2.10</b>    |
| <b>57,405</b><br>TBKOO   | <b>Intermediate Adapter</b> with correction lens, for use with Nos. 57,300 and 57,320, when making photomicrographs.....  | <b>10.80</b>   |
| <b>57,410</b><br>LSZOO   | <b>Light-Excluding Ring</b> , for making light-tight connection between intermediate adapter No. 57,405 and microscope when making photo-micrographs with Nos. 57,300 and 57,320.....   | <b>4.80</b>    |

| Cat. No. and<br>Code Word   |   | Price          |
|---|---|----------------|
| <b>57,412</b><br>COOED  | <b>Special Short Focusing Mount</b> , for the ELMAR 90mm lens for use with Nos. 57,300 and 57,320.....  | <b>\$15.00</b> |
| <b>57,413</b><br>COOTL  | <b>Special Short Focusing Mount</b> , for the THAMBAR 90mm lens, for use with Nos. 57,300 and 57,320.....   | <b>15.00</b>   |
| <b>57,414</b><br>COOHS  | <b>Special Short Focusing Mount</b> , for the HEKTOR 135mm lens, for use with Nos. 57,300 and 57,320.....   | <b>18.00</b>   |
| <b>57,415</b><br>MOORB  | <b>Extension Tube</b> , for the TELYT 200mm lens, for use with Nos. 57,300 and 57,320.....  | <b>3.00</b>    |
| <p>NOTE: WHILE IT IS QUITE SATISFACTORY TO USE THE 50mm LENSES FOR ORDINARY COPY WORK, SUCH AS REPRODUCTION OF MANUSCRIPTS, ETC., THE PERSPECTIVE CAN BE GREATLY IMPROVED BY USING ONE OF THE LONG FOCUS LEICA LENSES, ESPECIALLY WHEN PHOTOGRAPHS OF OBJECTS ARE TAKEN WHICH HAVE A CERTAIN DEPTH. THE 90 AND 135mm LEICA LENSES WOULD NOT ALLOW OF FOCUSING AT ANY DISTANCE UP TO INFINITY WHEN USED IN THE FOCUSING COPYING ATTACHMENTS WITH THEIR STANDARD FOCUSING MOUNTS. FOR THIS REASON WE RECOMMEND THE <b>SPECIAL FOCUSING MOUNTS NOS. 57,412, 57,413 and 57,414</b>, WHICH CAN BE FOCUSED AT ANY DISTANCE UP TO INFINITY. FOR SHORTER DISTANCES AT GREATER MAGNIFICATIONS THEY ARE USED IN CONJUNCTION WITH ANY OF THE EXTENSION TUBES NOS. 57,370 to 57,400 and 57,635 to 57,670.</p> |   |                |
| <b>57,450</b><br>ZSL00  | <b>Collapsible Upright Pillar</b> , in three sections, total height 3 ft., including table clamp .....  | <b>28.80</b>   |
| <b>57,452</b><br>YQH00  | <b>Further Intermediate Portions</b> (middle sections of the upright) 1 ft. long.....each   | <b>7.20</b>    |
| <p>NOTE: The Collapsible Upright Pillar No. 57,450 serves for supporting the focusing copying attachments Nos. 57,300 and 57,320 in case the upright of an enlarger is not used. The copying devices are attached to the upright with the sliding arms Nos. 57,310 and 57,330. The intermediate portions serve for increasing the height of the upright.</p>  |   |                |
| <b>57,460</b><br>SPOOV  | <b>Special Horseshoe Stand</b> with clamping screw and supporting board, for the copying attachments Nos. 57,300 and 57,320..   | <b>7.20</b>    |
| <b>57,470</b><br>KG00N  | <b>Large Ball and Socket Head</b> , similar to the regular LEICA ball and socket tripod head but larger and heavier, for attaching focusing copying attachments Nos. 57,300 and 57,320 to tripod or horseshoe stand when photographing with the camera and rotary stage in vertical position..... | <b>7.20</b>    |
| <b>57,475</b><br>SPM00-<br>DOOSL  | <b>Large Horseshoe Stand</b> with upright and supporting board for the copying attachments Nos. 57,300 and 57,320.....  | <b>21.60</b>   |
| <p>NOTE: THE COPYING ATTACHMENTS SHOULD BE ATTACHED TO STAND NO. 57,475 WITH THE SLIDING ARMS NOS. 57,310 or 57,330.</p>  |   |                |
| <b>57,615</b><br>COSLA  | <b>Focusing Copying Attachment, Model 2</b> , same as No. 57,610, but with Special Focusing Screen which has a calibrated clear glass strip for critical focusing.....  | <b>19.05</b>   |
| <b>57,620</b><br>VEARM  | <b>Sliding Arm</b> , for attaching LEICA and copying attachments Nos. 57,600 and 57,610 to upright of enlarger.....   | <b>9.00</b>    |
| <p>NOTE: THE FOCUSING COPYING ATTACHMENTS TOGETHER WITH THE SLIDING ARM CAN BE ATTACHED TO THE VERTICAL UPRIGHT OF THE LEICA UNIVERSAL</p>  |   |                |



ENLARGERS. IF AN ENLARGER IS NOT AVAILABLE, THE BASEBOARD AND UPRIGHT MAY BE PURCHASED SEPARATELY.

|  |  |               |
|--|--|---------------|
| <b>57,630</b><br>LOOCC   | <b>Magnifier 5 X</b> with adjustable collar for Copy Attachment, models Nos. 1 and 2, as well as Nos. 57,300 and 57,320.....   | <b>\$7.20</b> |
| NOTE: ALSO SEE 30X MAGNIFIER NO. 57,355. WHEN THIS MAGNIFIER IS USED THE COPYING ATTACHMENTS NOS. 57,600 OR 57,610 SHOULD BE EQUIPPED WITH A SPECIAL FOCUSING SCREEN WHICH HAS A CALIBRATED CLEAR GLASS STRIP, at \$5.55 additional and an installment charge of \$1.65. THE SLIDING FOCUSING COPYING ATTACHMENTS NOS. 57,605 AND 57,615 HAVE A CALIBRATED CLEAR GLASS STRIP ON THE FOCUSING SCREEN. |  |               |
| <b>57,635</b><br>FULOR   | <b>1.2cm Extension Tube</b> , for use with Copy Attachments, Nos. 57,300, 57,320, 57,600, 57,605, 57,610 and 57,615 and also the UDIMO Projectors .....  | <b>1.80</b>   |
| <b>57,640</b><br>UBECD   | <b>2.2cm Extension Tube</b> , for use with Copy Attachments, Nos. 57,300, 57,320, 57,600, 57,605, 57,610 and 57,615 and also the UDIMO Projectors .....  | <b>1.80</b>   |
| <b>57,650</b><br>FULFO   | <b>3cm Extension Tube</b> , for use with Copy Attachments, Nos. 57,300, 57,320, 57,600, 57,605, 57,610 and 57,615.....   | <b>2.10</b>   |
| <b>57,660</b><br>FULGX   | <b>6cm Extension Tube</b> , for use with Copy Attachments, Nos. 57,300, 57,320, 57,600, 57,605, 57,610 and 57,615.....   | <b>2.40</b>   |
| <b>57,670</b><br>FULHI   | <b>9cm Extension Tube</b> , for use with Copy Attachments, Nos. 57,300, 57,320, 57,600, 57,605, 57,610 and 57,615.....   | <b>3.00</b>   |
| <b>57,675</b><br>OOZIS   | <b>Collapsible Table Reproduction Device</b> , particularly useful when on trips and for work in archives, libraries, etc. It is comparatively small in size, light in weight and when collapsed very convenient to carry. This reproduction device consists of a horseshoe base with upright; mounted to the latter is an arm permitting vertical adjustment. A rod situated parallel to the upright contains notches by means of which the sharp focus of lenses upon the specimen plane is facilitated, metal masks (of which five are included) indicate the area covered by various objectives at various distances. To facilitate the variation within the covered area, adapter rings (not included in this outfit, but listed separately below) are required to be placed between camera and objective.... | <b>31.20</b>  |
| <b>57,676</b><br>OOZKU   | <b>Set of Five Adapter Rings</b> , of different lengths.....   | <b>12.00</b>  |
| <b>57,730</b><br>ELPRO   | <b>Front Lens I</b> , for ELMAR 50mm lens (covers areas from 16 9/16 x 24 13/16 to 8 9/16 x 12 7/8 in.).....   | <b>6.00</b>   |
| <b>57,740</b><br>ELPIK   | <b>Front Lens II</b> , for ELMAR 50mm lens (covers areas from 8 7/16 x 12 5/8 to 5 5/8 x 8 1/2 in.).....   | <b>6.60</b>   |
| <b>57,750</b><br>ELPET   | <b>Front Lens III</b> , for ELMAR 50mm lens (covers areas from 4 1/4 x 6 5/16 to 3 3/8 x 5 in.).....   | <b>8.40</b>   |
| <b>57,752</b><br>VMCOE   | <b>Front Lens Adapter</b> for accommodating ELMAR front lenses on SUMMAR 50mm f:2 lens No. 50,360.....   | <b>.90</b>    |
| <b>57,800</b><br>FIRGI   | <b>Adapter Ring</b> , for attaching LEICA filters on 50mm lenses when Front Lens is being used on camera lens.....   | <b>.45</b>    |
| <b>57,810</b><br>BELUN   | <b>Auxiliary Reproduction Device</b> , for LEICA with interchangeable ELMAR 50mm f:3.5 lens, for photographing small objects in natural size (1:1), consisting of an intermediate collar marked 1:1 and tripod with baseplate and clamping collar..  | <b>10.80</b>  |

**Cat. No. and  
Code Word**

**Price**

|                        |  |                |
|------------------------|--|----------------|
| <b>57,815</b><br>BESUM | <b>Auxiliary Reproduction Device</b> , same as No. 57,810, but for SUMMAR 50mm, f:2 lens.....  | <b>\$10.80</b> |
| <b>57,822</b><br>BEH00 | <b>Auxiliary Reproduction Device</b> , for LEICA with interchangeable ELMAR and SUMMAR lenses 50mm, for photographing small objects in slightly reduced size (scale 1:1½, 1:2 and 1:3), consisting of three different intermediate collars marked 1:1½, 1:2 and 1:3, universal clamping ring and four adjustable legs, with bands indicating distances (white bands for ELMAR and yellow bands for SUMMAR lenses).....   | <b>15.00</b>   |
| <b>57,862</b><br>BEOOY | <b>Setting Device</b> , for the LEICA Camera, with interchangeable lenses ELMAR, HEKTOR or SUMMAR 50mm focus in connection with supplementary front lenses Nos. 2 or 3, consisting of clamping ring and four adjustable legs, with bands indicating distances (white bands for ELMAR and HEKTOR and yellow bands for SUMMAR lenses).....   | <b>7.80</b>    |
| <b>57,884</b><br>BAZ00 | <b>Universal Focusing Arrangement</b> , which combines in itself the working possibilities of the devices BEH00 No. 57,822 and BEOOY No. 57,862, consisting of a universal clamping ring which fits the two sets of extension legs for the BEH00 and BEOOY attachments, three intermediate extension tubes with markings 1:1.5, 1:2 and 1:3 and four auxiliary rods No. 57,864, with bands indicating distances (white bands for ELMAR and HEKTOR and yellow bands for SUMMAR lenses)..... | <b>21.60</b>   |
| <b>57,890</b><br>BELOS | <b>Small Illuminating Lamp</b> , with 25-watt lamp for direct connection (please state voltage) .....  | <b>9.00</b>    |

## PHOTOMICROGRAPHIC ACCESSORIES

|                        |  |               |
|------------------------|--|---------------|
| <b>58,300</b><br>MIOOP | <b>Micro Adapter</b> , for attaching LEICA Camera to draw-tube of microscope .....   | <b>3.90</b>   |
| <b>58,310</b><br>MIKAS | <b>Micro Ibsa Attachment</b> , for the LEICA Camera for use in taking photographs through the microscope. This attachment is equipped with a conical extension tube, with correction lens giving an initial magnification of 1/3x, Compur shutter, reflecting focusing magnifier. Periplan 10X eyepiece and two wire cable releases, <b>complete in case</b> ..... | <b>56.00†</b> |
| <b>58,320</b><br>AUTAS | <b>Automatic Release</b> , for Micro IBSO Attachment.....  | <b>7.20†</b>  |
| <b>58,330</b><br>GHIEF | <b>Conical Extension Tube</b> , with correction lens of 1/3x initial magnification of Micro IBSO Attachment.....   | <b>9.00†</b>  |
| <b>58,333</b><br>GHIMW | <b>Conical Extension Tube</b> , with correction lens of 1/2x initial magnification, for Micro IBSO Attachment.....   | <b>12.00†</b> |
| <b>58,336</b><br>GHINK | <b>Conical Extension Tube</b> , with correction lens of 1x initial magnification, for Micro IBSO Attachment.....   | <b>16.50†</b> |

## FILM AND SLIDE PRINTING APPARATUS

|                        |   |              |
|------------------------|---|--------------|
| <b>59,000</b><br>ELDUR | <b>LEICA Positive Printing Apparatus</b> , for LEICA glass diapositives 50 x 50mm.....  | <b>16.80</b> |
| <b>59,010</b><br>ELDIA | <b>ELDIA Printing Apparatus</b> , for printing paper or film strips from LEICA negatives, complete with window for LEICA negatives .....  | <b>16.80</b> |
| <b>59,110</b><br>USTOL | <b>Paper Slide Masks</b> , aperture 24 x 36mm, for use with standard 50 x 50mm glass slides. One side is coated with a special tin-foil compound which deflects the heat from the lamp house and protects the slide from excessive heat..... <b>per hundred</b> | <b>1.50</b>  |



Cat. No. and  
Code Word

|                 |   | Price    |
|-----------------|---|----------|
| 59,120<br>ULSMA | <b>LEICA (Medium) 50 x 50mm Lantern Plates</b> , for black tones.<br>Grade A glass.....per dozen  | \$..44** |
| 59,130<br>ULSOB | <b>LEICA (Contrast) 50 x 50mm Lantern Plates</b> , for black tones.<br>Grade A glass.....per dozen  | ..44**   |
| 59,140<br>UGLAS | <b>Cover Glass Plates</b> , 35 x 120mm, for mounting three stereo<br>pictures or three lantern slides.....per hundred   | 3.30     |
| 59,150<br>UGLIT | <b>Cover Glass Plates</b> , 50x50mm, for glass positives, per hundred   | 2.55     |
| 59,155<br>LANCA | <b>Case for LEICA Lantern Slides</b> , capacity 100 slides, 50x50mm   | 1.95     |
| 59,160<br>UMASK | <b>Black Paper Masks</b> , 50 x 50mm with 24 x 36mm aperture<br>per hundred   | ..60     |
| 59,170<br>UMKLE | <b>Gummed Paper</b> , for glass positives, 250 ft. long.....per roll  | ..45     |
| 59,175<br>CELLU | <b>Scotch Cellulose Binding Tape</b> , black, 2592 in. per roll, ½ in.<br>wide. (This type is opaque and makes a very smooth and<br>attractive slide binding material.) Packed two rolls per<br>can .....per roll | 2.05     |
| 59,176<br>CERED | <b>Scotch Cellulose Binding Tape</b> , same as No. 59,175, but<br>red .....per roll   | 2.05     |

## PROJECTION APPARATUS

### PROJECTORS MODEL VIII-S

|                           |  |       |
|---------------------------|--|-------|
| 59,200<br>TUUDY           | <b>Projector VIII-S</b> , with 250-watt Osram lamp, reflector, well<br>ventilated easily detachable lamp housing, two internal re-<br>movable condenser lenses Nos. 2 and 3, heat absorption filter,<br>window shutter permitting reading or making notes in dark-<br>ened auditoriums during projection, built-in tilting device<br>enabling the projected image to be moved up or down, revol-<br>ving front permitting the projection of vertical or horizontal<br>pictures. This projector is also provided with external adjust-<br>ments for correctly centering the lamp, and the distance of<br>the carrier for the glass slide and film gates, from the lamp<br>housing, can be altered, insuring maximum illumination. Also<br>including external interchangeable condenser for 50mm<br>LEICA lenses ..... | 60.00 |
| 59,205<br>TUOOD           | <b>Removable Slide Changer</b> , for 50 x 50mm LEICA glass slides  | 4.80  |
| 59,210<br>TUUIO           | <b>Projector VIII-S</b> , complete with Removable Slide Changer<br>(Cat. Nos. 59,200 and 59,205) for use with 50mm LEICA<br>lenses, but without lens.....  | 64.80 |
| 59,212<br>TUUIO-<br>UDAKI | <b>Projector VIII-S</b> , complete with Removable Slide Changer,<br>same as Cat. No. 59,210, but with internal removable con-<br>denser lenses Nos. 1 and 2, and external interchangeable con-<br>denser for 73mm and 90mm LEICA lenses and 80mm and<br>85mm projection lenses.....  | 64.80 |
| 59,214<br>TUUIO-<br>UBIKU | <b>Projector VIII-S</b> , complete with Removable Slide Changer,<br>same as Cat. No. 59,212, but with external interchangeable<br>condenser for 135mm LEICA lenses and 120mm and 150mm<br>projection lenses .....  | 64.80 |
| 59,216<br>TUUIO-<br>UUPMI | <b>Projector VIII-S</b> , complete with Removable Slide Changer,<br>same as Cat. No. 59,212, but with external interchangeable<br>condenser for 200mm LEICA lens and 200mm projection lens   | 64.80 |

| Cat. No. and<br>Code Word        |   | Price          |
|----------------------------------|---|----------------|
| <b>59,220</b><br>TUUEM           | <b>Removable Film Attachment</b> , for LEICA positive film strips..   | <b>\$12.00</b> |
| <b>59,224</b><br>TUUAK           | <b>Projector VIII-S</b> , complete with Removable Film Attachment (Cat. Nos. 59,200 and 59,220) for use with 50mm LEICA lenses, but without lens .....  | <b>72.00</b>   |
| <b>59,226</b><br>TUUAK-<br>UDAKI | <b>Projector VIII-S</b> , complete with Removable Film Attachment, same as Cat. No. 59,224, but with internal removable condenser lenses Nos. 1 and 2 and external interchangeable condenser for 73mm and 90mm LEICA lenses and 80mm and 85mm projection lenses ..... | <b>72.00</b>   |
| <b>59,228</b><br>TUUAK-<br>UBIKU | <b>Projector VIII-S</b> , complete with Removable Film Attachment, same as Cat. No. 59,226, but with external interchangeable condenser for 135mm LEICA lenses and 120mm and 150mm projection lenses .....  | <b>72.00</b>   |
| <b>59,230</b><br>TUUAK-<br>UUPMI | <b>Projector VIII-S</b> , complete with Removable Film Attachment, same as Cat. No. 59,226, but with external interchangeable condenser for 200mm LEICA lens and 200mm projection lens.   | <b>72.00</b>   |
| <b>59,242</b><br>TUUMC-<br>GLASS | <b>Projector VIII-S</b> , same as Cat. No. 59,234, but with projection lens Dimar f:4, 200mm focus and interchangeable condenser Cat. No. 59,292 .....  | <b>119.40</b>  |
| <b>59,244</b><br>TUURS           | <b>Projector VIII-S</b> , complete with Removable Film Attachment, same as Cat. No. 59,226, but with projection lens HEKTOR f:2.5, 85mm focus .....   | <b>105.00</b>  |
| <b>59,246</b><br>TUUPR           | <b>Projector VIII-S</b> , same as Cat. No. 59,244, but with projection lens EPIS f:3.6, 80mm focus .....  | <b>94.80</b>   |
| <b>59,248</b><br>TUUQE           | <b>Projector VIII-S</b> , same as Cat. No. 59,244, but with projection lens DIMAX f:4.5, 120mm focus and interchangeable condenser Cat. No. 59,291 .....  | <b>102.00</b>  |
| <b>59,250</b><br>TUULP           | <b>Projector VIII-S</b> , same as Cat. No. 59,244, but with projection lens DIMAR f:3.5, 150mm focus and interchangeable condenser Cat. No. 59,291 .....  | <b>123.90</b>  |
| <b>59,252</b><br>TUUMC           | <b>Projector VIII-S</b> , same as Cat. No. 59,244 but with projection lens Dimar f:4, 200mm focus and interchangeable condenser Cat. No. 59,292 .....   | <b>126.60</b>  |

## ACCESSORIES FOR THE PROJECTORS VIII-S

|                        |  |              |
|------------------------|--|--------------|
| <b>59,260</b><br>TUUD  | <b>Removable Slide Changer</b> , for 50 x 50mm LEICA glass slides  | <b>4.80</b>  |
| <b>59,262</b><br>TUUEM | <b>Removable Film Attachment</b> , for LEICA positive film strips..  | <b>12.00</b> |
| <b>59,264</b><br>UASKU | <b>Interchangeable Mask</b> , 18 x 24mm, for Removable Film Attachment, Cat. No. 59,262 .....                | <b>2.10</b>  |
| <b>59,266</b><br>TUUGN | <b>Removable Gate</b> , for 50 x 50mm glass slides with 3 x 4cm picture area .....                           | <b>2.10</b>  |
| <b>59,268</b><br>TNUUZ | <b>Internal Removable Condenser Lens No. 3</b> .....   | <b>3.90</b>  |
|                        | NOTE: THIS CONDENSER LENS IS ONLY USED WITH THE 50MM LEICA LENSES.   |              |
| <b>59,270</b><br>TRPUU | <b>Internal Removable Condenser Lens No. 1</b> .....   | <b>3.90</b>  |
|                        | NOTE: THIS CONDENSER LENS IS USED WITH ALL PROJECTION LENSES AND ALL LEICA LENSES, EXCEPT 50MM LEICA LENSES. |              |
| <b>59,272</b><br>TUUNQ | <b>Extension Tube</b> , for using the 200mm, TELYT lens on the Projector VIII-S .....                        | <b>9.60</b>  |



| Cat. No. and<br>Code Word        |  | Price          |
|----------------------------------|--|----------------|
| <b>59,280</b><br>UFEDU-<br>UZUUS | <b>Projection Lens, HEKTOR f:2.5, 85mm focus, with focusing mount</b> .....  | <b>\$33.00</b> |
| <b>59,282</b><br>BEUUY-<br>UZUUS | <b>Projection Lens, EPIS f:3.6, 80mm focus, with focusing mount</b> .....  | <b>22.80</b>   |
| <b>59,284</b><br>UPEOB-<br>UZUUS | <b>Projection Lens, DIMAX f:4.5, 120mm focus, with focusing mount</b> .....  | <b>30.00</b>   |
| <b>59,286</b><br>TUUBA           | <b>Projection Lens, DIMAR f:3.5, 150mm focus, with focusing mount and special lens front</b> .....   | <b>51.90</b>   |
| <b>59,287</b><br>TUUKB           | <b>Projection Lens, DIMAR f:4, 200mm focus with focusing mount and special lens front</b> .....  | <b>54.60</b>   |
| <b>59,288</b><br>DLUW            | <b>External Interchangeable Condenser, for 50mm LEICA lenses</b> .....   | <b>4.20</b>    |
| <b>59,290</b><br>UDAKI           | <b>External Interchangeable Condenser, for 73mm and 90mm LEICA lenses, and 80mm and 85mm projection lenses</b> .....   | <b>4.20</b>    |
| <b>59,291</b><br>UBIKU           | <b>External Interchangeable Condenser, for 135mm LEICA lenses, and 120mm and 150mm projection lenses</b> .....   | <b>4.20</b>    |
| <b>59,292</b><br>UUPMI           | <b>External Interchangeable Condenser, for 200mm LEICA and projection lenses</b> .....   | <b>4.20</b>    |
| <b>59,293</b><br>APUUM           | <b>Projection Lamp, tubular, 250-watt, for replacement</b> .....   | <b>7.00*</b>   |
| <b>59,294</b><br>BUUMG           | <b>Low Voltage Projection Lamp, 250-watt, 50 volt</b> .....<br>NOTE: THIS LAMP CAN ONLY BE USED IN CONNECTION WITH A RHEOSTAT.   | <b>7.00*</b>   |
| <b>59,295</b><br>BPUUO           | <b>Rheostat, for Low Voltage Projection Lamp, Cat. No. 59,294, 250-watt, 50 volt, for 110 volt current</b> .....   | <b>7.80</b>    |
| <b>59,296</b><br>TOIUU           | <b>Carrying Case, for Projector VIII-S, with accessories</b> .....   | <b>11.25</b>   |
| <b>59,297</b><br>ELRUU           | <b>Projection Table, consisting of three tripod legs 70cm high. The platform can be tilted up or down so as to permit Projector to be used at an angle</b> ..... <b>complete</b> | <b>13.80</b>   |
| <b>59,297a</b><br>EMUUX          | <b>Projection Table, same as Cat. No. 59,297, but 130cm high</b> ..  | <b>17.10</b>   |

## PROJECTOR "STANDARD"

|                        |  |              |
|------------------------|--|--------------|
| <b>59,298</b><br>UZISU | <b>STANDARD Projector, for use with 50mm LEICA lenses only, complete with 100 watt projection lamps and gate for 50 x 50mm LEICA glass slides, without lens</b> .....<br>NOTE: THIS IS AN INEXPENSIVE, SIMPLIFIED TYPE OF THE UDIMO-100, NO. 59,300, WITH NON-INTERCHANGEABLE CONDENSER AND FRONT. | <b>33.00</b> |
| <b>59,299</b><br>AXUUD | <b>Projection Lamp, 100-watt, 110-volt, for STANDARD Projector</b> .....   | <b>2.00*</b> |

## PROJECTORS MODEL UDIMO

NOTE: WHEN ORDERING ANY OF THE UDIMO PROJECTORS, IT IS NECESSARY TO SPECIFY THE CORRECT INTERCHANGEABLE CONDENSER WHICH IS REQUIRED. THE PROJECTORS ARE ALL LISTED WITHOUT THE

ø—Not in stock for immediate delivery.

INTERCHANGEABLE CONDENSERS NOS. 59,710 TO 59,745 AND ALSO WITHOUT THE ADDITIONAL FILM AND GLASS SLIDE ACCESSORIES WHICH ARE ALL LISTED SEPARATELY. WITH THIS LISTING, IT IS VERY EASY TO BUILD UP A PROJECTOR TO MEET ANY PROJECTION REQUIREMENTS.

|   |   |                |
|---|---|----------------|
| <b>59,300</b><br>UDIMO  | <b>UDIMO 100 Projector</b> , with standard 100-watt Projection bulb, reflector, two stationary condenser lenses of 52.5mm diameter, removable heat absorption filter, support for revolving front attachment, accommodates all UDIMO accessories interchangeably, with window shutter permitting reading or making notes in darkened auditoriums during projection, 8 ft. cord with switch and plug connections but <b>without</b> interchangeable condenser and attachments.....   | <b>\$45.00</b> |
| <b>59,330</b><br>UDAVI  | <b>Carrying Case</b> , of non-warping wood, for carrying the UDIMO 100, No. 59,300 Projector and small accessories.....   | <b>9.00</b>    |
| <b>59,400</b><br>BDFUU  | <b>UDIMO 400 Projector</b> , with standard 400-watt Osram projection bulb, special large lamp house, water-cooled type heat absorption filter; accommodates all UDIMO accessories interchangeably. This Projector is designed for large halls and auditoriums; for extra large screen images and natural color projection where the maximum of illumination is necessary. With window shutter permitting reading or making notes in darkened auditoriums during projection. <b>Without</b> interchangeable condenser and attachments..... | <b>90.00</b>   |
| <b>THE FOLLOWING ACCESSORIES ARE INTERCHANGEABLE ON ALL UDIMO PROJECTORS:</b> |   |                |
| <b>59,700</b><br>UKEDU  | <b>LEICA Film Attachment</b> , for interchangeable use of LEICA lenses, removable fire-protection drums, film sliding gate with 24 x 36mm window.....   | <b>18.60</b>   |
| <b>59,702</b><br>SERUU  | <b>LEICA Film Attachment</b> , similar to No. 59,700, however equipped with special film drums of large capacity (20m film) .....   | <b>31.65</b>   |
| <b>59,704</b><br>ATTAC  | <b>LEICA Film Attachment</b> , with base tube, for the special DIMAX projection lenses Cat. Nos. 59,881, 59,883 and 59,885 with removable fire protection drums and film sliding gate with 24x36mm window for use on UDIMO Projectors Nos. 59,400 and 59,410.....   | <b>26.40</b>   |
| <b>59,706</b><br>HMENT  | <b>LEICA Film Attachment</b> , similar to Cat. No. 59,704, however equipped with special film drums of large capacity (20m film) .....  | <b>39.60</b>   |
| <b>59,710</b><br>BRUUM  | <b>Interchangeable Condenser</b> , marked "5" for use with SUMMAR, HEKTOR, and ELMAR 50mm lenses. For UDIMO-100 projectors .....  | <b>4.20</b>    |
| <b>59,715</b><br>DLUWU  | <b>Interchangeable Condenser</b> , marked "5" for use with SUMMAR, HEKTOR, and ELMAR 50mm lenses. For UDIMO-400 and 750 projectors.....   | <b>4.20</b>    |
| <b>59,720</b><br>UDAKI  | <b>Interchangeable Condenser</b> , marked "7.3-8-9" for use with LEICA lenses HEKTOR 73mm, ELMAR 90mm, and special projection lens MILAR 80mm focus, for all UDIMO Projectors .....   | <b>4.20</b>    |
| <b>59,730</b><br>UBIKI  | <b>Interchangeable Condenser</b> , marked "10.5-12-13.5-15" for use with LEICA lenses ELMAR 105mm, ELMAR and HEKTOR 135mm, and special projection lenses DIMAX 120mm, and 150mm focus .....   | <b>4.20</b>    |
| <b>59,745</b><br>UUPMI  | <b>Interchangeable Condenser</b> , marked "20-25", for use with special projection lenses DIMAX 200mm and 250mm focus.....  | <b>4.20</b>    |



# FILM AND GLASS SLIDE SLIDING GATES

Cat. No. and  
Code Word

|  |   | Price         |
|--|---|---------------|
| <b>59,810</b><br>AFUUV   | <b>Film Sliding Gate</b> , with window, for standard size 18 x 24mm   | <b>\$9.30</b> |
| <b>59,820</b><br>AKUUR   | <b>Glass Slide Sliding Gate</b> , with round aperture of 43mm diameter for LEICA glass positives 50 x 50mm.....   | <b>1.50</b>   |
| <b>59,830</b><br>AWUUE   | <b>Glass Slide Sliding Gate</b> , with round aperture of 48mm diameter for positive 30 x 40mm, mounted between glass plates 50 x 50mm .....   | <b>1.50</b>   |
| <b>59,840</b><br>AGNUU   | <b>Glass Slide Sliding Gate</b> , with square aperture of 24 x 36mm for LEICA positives, mounted between glass plates measuring 35 x 120mm .....  | <b>1.50</b>   |
| NOTE: ALL SLIDING GATES CAN BE USED IN THE FILM ATTACHMENTS NOS. 59,700, 59,702, 59,704 and 59,706 AND THE GLASS SLIDE ATTACHMENT NOS. 59,890 and 59,892.  |   |               |
| <b>59,850</b><br>UBECD   | <b>Extension Tube</b> , (length 22mm) for UDIMO Projectors. This tube places LEICA lenses in position for projecting pictures at close distances for reading or enlarging purposes.....   | <b>1.80</b>   |
| <b>59,860</b><br>UDOZU   | <b>Base Tube</b> , for special projection lenses in which both the 80 and 120mm focus projection lenses can be used interchangeably. The tube is provided with thread so that it can be screwed into LEICA film attachments No. 59,700 and 59,702 and into glass slide attachment No. 59,890..... | <b>5.40</b>   |
| <b>59,870</b><br>UDAOB   | <b>Special Projection Lens MILAR</b> , of 80mm focus, for use in conjunction with base tube No. 59,860 in LEICA film attachments 59,700, 59,702 and 59,890 in all UDIMO projectors..  | <b>16.50</b>  |
| <b>59,880</b><br>UPEOB   | <b>Special Projection Lens DIMAX</b> , of 120mm focus, for use in conjunction with base tube No. 59,860 in LEICA film attachments 59,700, 59,702 and 59,890 in all UDIMO projectors....   | <b>26.40</b>  |
| <b>59,880a</b><br>ULEUF  | <b>Special Projection Lens DIMAX</b> of 150mm focus with focusing mount for UDIMO projector No. 59,400. (This lens can be directly attached to LEICA film attachments Nos. 59,700, 59,702 or 59,890) .....  | <b>36.00</b>  |
| <b>59,881</b><br>MAXIV   | <b>Special Projection Lens DIMAX</b> , of 150mm focus for Projectors Nos. 59,400 and 59,410 for use on attachments Nos. 59,704, 59,706 and 59,892 .....   | <b>30.00</b>  |
| <b>59,883</b><br>MAXTO   | <b>Special Projection Lens DIMAX</b> , of 200mm focus for Projectors Nos. 59,400 and 59,410 with extension tube for use on attachments Nos. 59,704, 59,706 and 59,892.....  | <b>33.00</b>  |
| <b>59,885</b><br>MAXAF   | <b>Special Projection Lens DIMAX</b> , of 250mm focus for Projector No. 59,410 with two extension tubes for use on attachments Nos. 59,704, 59,706 and 59,892.....  | <b>36.00</b>  |
| NOTE: THE SPECIAL PROJECTION LENSES DIMAX NOS. 59,881, 59,883 AND 59,885 DO NOT INCLUDE THE BASE FILM OR GLASS SLIDE ATTACHMENT. THEY CAN ONLY BE USED WITH ONE OF THE SPECIAL FILM OR GLASS SLIDE ATTACHMENTS NOS. 59,704, 59,706 AND 59,892. |   |               |
| <b>59,890</b><br>UBAFE   | <b>Glass Slide Attachment</b> , for interchangeable use of LEICA lenses, including sliding gate with window for 50 x 50mm glass positive slides.....  | <b>5.40</b>   |
| <b>59,892</b><br>SLIDE   | <b>Glass Slide Attachment</b> , with base tube for the special projection lenses DIMAX Cat. Nos. 59,881, 59,883 and 59,885, for the UDIMOS 400 and 750 only.....  | <b>12.60</b>  |
| <b>59,900</b><br>UKLIB   | <b>Slide Changer</b> , for LEICA glass slides 50 x 50mm, for use with Nos. 59,890, 59,892, 59,700 and 59,704.....   | <b>4.20</b>   |

**Cat. No. and  
Code Word**

**Price**

|                        |   |               |
|------------------------|---|---------------|
| <b>59,910</b><br>AFLUU | <b>Lower Plane Glass Plate</b> , with window 18 x 24mm for interchangeable use with the normal glass plate of the film sliding gate No. 59,700 for LEICA size (24 x 36 mm)..... | <b>\$2.40</b> |
| <b>59,920</b><br>USNAL | <b>Elevator Plate</b> , (of metal) for tilting the Projectors Nos. 59,300, 59,400 and 59,410.....   | <b>1.65</b>   |

**PROJECTORS UMINO**

|                        |  |              |
|------------------------|--|--------------|
| <b>60,000</b><br>UMINO | <b>LEICA UMINO Projector</b> , for use with single frame, double frame and 50 x 50mm glass slides, complete, including projection lens and 50-watt bulb, <b>without case</b> ..... | <b>45.00</b> |
| <b>60,005</b><br>UMELA | <b>LEICA UMINO Projector</b> , same as No. 60,000 but equipped with front elevator attachment No. 60,018.....  | <b>47.50</b> |
| <b>60,010</b><br>UMENA | <b>LEICA UMENA Projector</b> , same as No. 60,000, but including 100-watt projection bulb and heat absorption filter.....  | <b>47.50</b> |
| <b>60,015</b><br>UMATA | <b>LEICA UMENA Projector</b> , same as No. 60,010, but equipped with front elevator attachment No. 60,018.....   | <b>50.00</b> |
| <b>60,025</b><br>UMCAS | <b>Leatherette Carrying Case</b> , for UMINO Projector, with compartment for extra films or lamps.....   | <b>2.10</b>  |
| <b>60,030</b><br>UMERN | <b>Easel Desk Projection Screen</b> , 16 x 16 in. with washable screen surface and cover.....  | <b>3.00</b>  |
| <b>60,032</b><br>UMLED | <b>Soft Leather Case</b> , for Projection Screen No. 60,030.....   | <b>1.50</b>  |

**ENLARGING APPARATUS**

|                        |   |              |
|------------------------|---|--------------|
| <b>60,300</b><br>VALOY | <b>VALOY Universal Enlarger</b> , for use with single frame, LEICA double frame and 3 x 4cm negatives, with lever for operating built-in pressure plate for holding negatives in flat plane, with 80cm upright pillar, 75-watt, 110-volt lamp, with thread permitting the use of LEICA lenses (XENON cannot be used), but <b>without lens or easel (paper holder)</b> .....   | <b>45.00</b> |
| <b>60,312</b><br>VAROB | <b>Special 50mm ELMAR Lens</b> , with iris diaphragm, for use on all LEICA Enlargers. <b>This lens cannot be used on the LEICA camera</b> .....   | <b>30.00</b> |
| <b>60,320</b><br>FYLT0 | <b>Orange Filter</b> , for VALOY enlarger, to enable negative to be focused directly on sensitive paper.....  | <b>7.80</b>  |
| <b>60,450</b><br>VIW00 | <b>FOCOMAT Enlarger, MODEL I.</b> With automatic focusing control which focuses the lens <b>fully automatically</b> at any magnification from 2 to 10 diameters, for enlarging LEICA negatives and other miniature negatives of 18 x 24mm up to 4 x 4cm in size. Through adjustment by hand a magnification up to 15x can be obtained. Supplied with baseboard, 16 x 21 in.; adjustable focusing clamps for various settings when using films singly or in strips. LEICA 50mm (except XENON) lenses may be used. Adjustable lamp base, complete, with 75-watt, 110-volt lamp, metal masking plate for double frame negatives, lamp housing, metal upright pillar 80cm height, threaded focusing mount for receiving lens, <b>but without lens and enlarging easel</b> ..... | <b>75.00</b> |
| <b>60,452</b><br>VUT00 | <b>FOCOMAT Enlarger</b> , similar to No. 60,450, however, equipped with baseboard 22 x 25.5 in. and upright measuring 120cm. <b>without lens and enlarging easel</b> .....  | <b>96.00</b> |
| <b>60,470</b><br>VAROB | <b>Special 50mm ELMAR Lens</b> , with iris diaphragm, for use on all LEICA Enlargers. <b>This lens cannot be used on the LEICA camera</b> .....   | <b>30.00</b> |
| <b>60,471</b><br>FYSTY | <b>Orange Filter</b> , for FOCOMAT Enlargers No. 60,450 and No. 60,452 .....  | <b>6.30</b>  |



# **INTERCHANGEABLE ACCESSORIES FOR VALOY, VAMAX AND FOCOMAT MODEL 1 ENLARGERS**

| Cat. No. and<br>Code Word |   | Price         |
|---------------------------|---|---------------|
| <b>60,472</b><br>VALAU    | <b>Slip-on Ring</b> , for operating the iris diaphragm for LEICA ELMAR 50mm lens when used in any enlarger..... | <b>\$2.70</b> |
| <b>60,476</b><br>VAZEL    | <b>Metal Guiding Plate</b> , with double glass negative holder, for single LEICA negatives .....                | <b>2.10</b>   |

## **SPARE LAMPS AND ACCESSORIES FOR PHOTOFLOOD LAMPS**

|                        |  |              |
|------------------------|--|--------------|
| <b>60,840</b><br>VOBIT | <b>Special Diffusing Condenser</b> for use with the Enlargers Nos. 60,300, 60,450 and 60,452 when employing Photoflood bulbs..   | <b>4.80</b>  |
| <b>60,845</b><br>VORYM | <b>Special Ventilating Ring</b> , for use with Enlargers Nos. 60,300, 60,450 and 60,452 when employing Photoflood bulbs.....   | <b>4.80</b>  |
| <b>60,850</b><br>RHEOS | <b>Photoflood Rheostat Control</b> , for controlling illumination in enlarger when using Photoflood lamp. Dial calibrated from "0" to "100" giving percentage of brilliancy. Operates on either A.C. or D.C. 110-volt current. Conforms to all specifications of Fire Underwriters' Board. Complete, ready for use | <b>7.50+</b> |

The Photoflood lamps can only be used in connection with the Special Diffusing Condenser No. 60,840. This condenser is placed inside of the illuminating head on top of the regular illuminating condenser. The Photoflood Bulb always requires the use of the special Ventilating Ring No. 60,845 which is placed between the upper and lower hemispheres of the lamp housing.

## **ENLARGER EASELS AND ACCESSORIES**

|                        |   |              |
|------------------------|---|--------------|
| <b>61,310</b><br>FELIS | <b>Enlarging Easel</b> , for VALOY Enlarger. For paper sizes up to 8 x 10 in., with metal masking bands. Maximum picture area 6½ x 8½ in. ....  | <b>13.50</b> |
| <b>61,320</b><br>FELUK | <b>Enlarging Easel</b> , for VALOY Enlarger. For paper sizes up to 11 x 14 in., with metal masking bands. Maximum picture area 9 x 11 in. ....  | <b>16.20</b> |
| <b>61,323</b><br>FPY00 | <b>Enlarging Easel</b> , with grooves at lower surface for attaching to the baseboard clamp of FOCOMAT Enlargers Nos. 60,450 and 60,452 paper sizes up to 11 x 14 in., with metal masking bands, maximum picture area 9 x 11 in.....  | <b>18.00</b> |
| <b>61,326</b><br>FSOOT | <b>Enlarging Easel</b> , for paper sizes up to 16 x 20 in., with metal masking bands. Maximum picture area 13 x 17 in., for Enlarger No. 60,452 .....   | <b>48.00</b> |
| <b>61,350</b><br>VEKIP | <b>Metal Bracket</b> , with step arrangement, for holding enlarging easel in tilted position to overcome distortion in negative..   | <b>1.20</b>  |
| <b>61,352</b><br>ZR100 | <b>Distortion Eliminating Device</b> , for the elimination of objectionable distortion in the negative, when making enlargements. When the camera is tilted distortion is produced in the negative. The shorter the focal length of the lens the greater is the amount of such distortion. This can be corrected in printing by tilting the negative in the enlarger, and the Distortion Eliminating Device enables this to be done. This device can be used in conjunction with Auxiliary Baseboards Nos. 61,353 and 61,354, or Metal Bracket with step arrangement No. 61,350, which allow the easel to be tilted, enabling greater correction. The Distortion Eliminating Device consists of a frame which can be inserted into the film carrier of Enlargers Nos. 60,300, 60,450, and 60,452. A hinged double glass plate negative carrier which holds the negative is held in position by two clips on the |              |

|                        |   |              |
|------------------------|---|--------------|
|                        | device. The double glass plate negative carrier can be tilted in various directions to overcome the distortion in the negative (not including hinged glass plate No. 60,618 which is recommended for use with this device)..... | \$15.00      |
| <b>61,353</b><br>GOOBR | <b>Auxiliary Baseboard</b> , with ball-jointed head, to serve for tilting of enlarging easels, suitable for use with enlarger No. 60,300 .....  | <b>13.50</b> |
| <b>61,354</b><br>GOODS | <b>Auxiliary Baseboard</b> , same as No. 61,353, however for use with enlargers Nos. 60,450 and 60,452.....   | <b>15.00</b> |
| <b>61,355</b><br>YOBN  | <b>Threaded Flange</b> , for attaching to enlarging easels by means of which the easels can be mounted to the ball-jointed head of baseboards Nos. 61,353 and 61,354.....   | <b>1.80</b>  |
| <b>61,360</b><br>VAROB | <b>Special 50mm ELMAR Lens</b> , with iris diaphragm, for use on all LEICA Enlargers. <b>This lens cannot be used on the LEICA camera</b> .....   | <b>30.00</b> |
| <b>61,370</b><br>VULPE | <b>Adjustable Magnifying Glass</b> , for critical focusing of image with enlargers .....  | <b>13.50</b> |
| <b>61,390</b><br>VOOMD | <b>Glass Plate Negative Carrier</b> , 3.5 x 12cm. for holding LEICA negatives in Enlargers Nos. 60,300, 60,450, 60,452 and the former FILOY Enlarger .....  | <b>1.80</b>  |



# LEICA LITERATURE

**LEICA PHOTOGRAPHY**, monthly publication issued free of charge to all LEICA owners who have registered their camera with us and at \$1.00 to non-LEICA owners, \$2.00 yearly subscription to all others outside the United States. Edited by Augustus Wolfman.

The following books are obtainable from all photographic dealers or direct from E. Leitz, Inc.:

|                        |  |               |
|------------------------|--|---------------|
| <b>63,010</b><br>LIMAN | <b>"The LEICA Manual"</b> , a book for the amateur and professional LEICA worker, edited and published by Willard D. Morgan and Henry M. Lester. Contributed chapters by over twenty experts in various branches of LEICA photography; over 500 pages containing the most complete information covering the field of LEICA photography; cloth binding; profusely illustrated ..... | <b>\$4.00</b> |
| <b>63,015</b><br>ANUAL | <b>"The LEICA Annual, 1937"</b> , edited by Henry M. Lester. Contains 160 outstanding LEICA photographs, spiral bound....  | <b>3.00</b>   |
| <b>63,020</b><br>MITRI | <b>"How to Use Your Candid Camera"</b> , by Ivan Dmitri, illustrated with about 70 photographs, cloth bound.....   | <b>3.50</b>   |
| <b>63,030</b><br>GALRI | <b>"Perspective As You Please"</b> , by Dr. Alfred Grabner, 25 pages, profusely illustrated. A book explaining the detailed uses of lenses of various lengths.....   | <b>.60</b>    |
|                        | <b>"Developing, Printing and Enlarging LEICA Pictures"</b> , by Willard D. Morgan, 60 pages, paper covered, illustrated....  | <b>.25</b>    |
|                        | <b>"The LEICA in Science"</b> , by W. D. Morgan, 68 pages, paper covered, illustrated .....  | <b>.25</b>    |

*Back Cover Composition:* Photographs on the following page are the work of LEICA photographers: Alan Mowbray, Dr. Charles Proctor, Ivan Dmitri, Hans Kloss, Earle B. Perkins, Tom Evans, M. G. M. Studios, Michael Helkin and Peter Stackpole.

Now that you have looked through this booklet there are probably many questions which have occurred to you regarding the LEICA and how it will help you solve your photographic problems. We have many booklets and pamphlets which go into various phases of LEICA photography and if you will outline just what you would like to know you will find that our service department will give you a prompt, complete answer.







