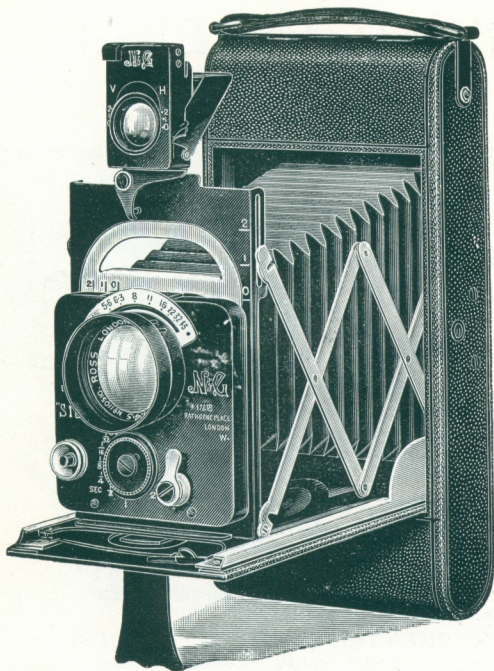


“N & G”

1929 MODELS



THE “SIBYL EXCELSIOR”  $4\frac{1}{2}$  in.  $\times$   $2\frac{1}{2}$  in.

THE UNRIVALLED ROLL FILM CAMERA.

*Complete Catalogue of Cameras and Sundries Post Free.*

NEWMAN & GUARDIA LIMITED,  
17/18, RATHBONE PLACE, OXFORD STREET, W. 1.

Phone :

Museum 1081.

Telegraphic Address :

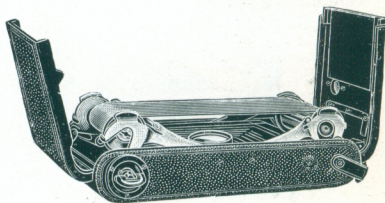
Goniometer, Westcent, London.



# THE NEW "SIBYL EXCELSIOR" ROLL FILM MODEL

Possesses the following new and exclusive patented features:—

**UNRIVALLED  
EASE OF  
LOADING.**



Spool chambers automatically lift clear of camera when back is opened. Spools are dropped in position. "No SPOOL PINS."—and return to position for use by merely closing camera back.

**RELEASE CATCH** for back incorporated in Winder, pulling out same and a  $\frac{1}{4}$ -turn in reverse direction being all that is necessary. Snap closing is also fitted.

**FLATNESS OF FILM SURFACE** to a hitherto un-attained degree is assured by means of special **Spring Pressure plate** in camera back.

**THE SHUTTER** on the new "EXCELSIOR" and "VITESSE" models is of "N and G" design, embodying new principles, giving a unique range of Accurate Speeds from 2 SECONDS to  $\frac{1}{150}$ th second; also positive Ball and Time movements when shutter is set at any speed. The cameras in other respects incorporate the usual "N and G" "Sibyl," features, described in the following pages.

**SPECIAL NOTE.**—The above shutter can be fitted to "New Special" and "New Ideal" Sibyl cameras—plate or roll film models—at an extra charge of £2 10s., if specified when ordering.

**A SPECIAL** feature of the "SIBYL VITESSE" focussing is a new device enabling Telephoto Lenses to be focussed out from infinity to approximately 3 yards with one movement only.



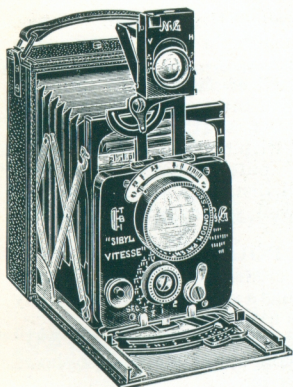
**"N & E"**

**"SIBYL"**

## FOLDING POCKET CAMERAS

For Plates and Film Packs or Roll Films.

Constructed in four sizes.



"Sibyl Vitesse"

**NOTHING WHICH OUR LONG EXPERIENCE CAN SUGGEST**, or the best workmanship secure, has been omitted to make the "Sibyl" Cameras perfect in every detail, and our new models are a revelation in Camera construction.

**They are LIGHT, COMPACT and ACCURATE** in all movements, are of all metal construction, covered in the best Morocco Leather, the Bellows are of the finest leather, and every essential movement for the most exacting worker with ease and simplicity of manipulation and exquisite finish is provided.

**ROLL FILM "SIBYL" MODELS** have the same movements and fittings as the plate models.

The Camera sides are constructed of the finest old seasoned mahogany, all fittings are flush, and they are made to take roll films only, giving extra large size pictures on the standard spools.

**The BABY "SIBYL"**  
 $4\frac{1}{2} \times 6$  c.m.

**The "NEW SPECIAL"**  
 $3\frac{1}{2}$  in.  $\times$   $2\frac{1}{2}$  in. or  $6\frac{1}{2} \times 9$  c.m.

**The NEW "SIBYL VITESSE"**  
 $3\frac{1}{2}$  in.  $\times$   $2\frac{1}{2}$  in. or  $6\frac{1}{2} \times 9$  c.m.  
 for plates and film pack.  
 Fitted with **F3.5** Lenses.

**The NEW "SIBYL EXCELSIOR"**  
 Roll Film Model,  $4\frac{1}{4} \times 2\frac{1}{2}$  in.  
 Fitted with **F4.5** Lenses.

**The "NEW IDEAL"**  
 $\frac{1}{4}$  plate,  $4\frac{1}{4}$  in.  $\times$   $3\frac{1}{4}$  in.



## “SIBYL” POCKET CAMERAS

(Continued).

**THE “N & G” HIGH PRECISION SHUTTER.**  
An exclusive “SIBYL” feature. Every speed is individually calibrated, and guaranteed correct to within 10% of scale. The range of speeds is from  $\frac{1}{2}$  to  $\frac{1}{200}$ th of a second, on Baby “Sibyl” models;  $\frac{1}{2}$  to  $\frac{1}{150}$ th on  $3\frac{1}{2} \times 2\frac{1}{2}$  in. models; and  $\frac{1}{2}$  to  $\frac{1}{100}$ th on the  $\frac{1}{4}$  plate models. Also time and bulb movements.

**Note.**—“NEW SPECIAL” and “NEW IDEAL” SIBYL cameras, when fitted with EXCELSIOR SHUTTER have speeds ranging from 2 seconds to  $\frac{1}{150}$ th sec.

**THE SHUTTER RELEASE** of all “Sibyl” Cameras is a special feature. The delicacy of this, in conjunction with the extremely smooth working of shutter, enables long exposures to be given in the hand with no trace of movement.

**FOCUSsing**—“N & G” patent lever focussing is fitted to all “Sibyl” models, all distances are individually scribed for each Camera, are well separated, and clearly engraved in yards.

**THE “N & G” PATENT FOLDING REFLECTOR FINDER** is fitted to all “Sibyl” models, save only the “Baby Sibyl” plate model. This finder has a sliding lens, accurately scaled to show rising front, and is fitted with levels.

The “Baby Sibyl” plate model is fitted with the “N & G” self-erecting and closing direct vision finder, which also shows rising front.

**FULL RISING FRONT**, both horizontal and vertical, is provided on all models.

**LENSES.**—Only the highest grade British lenses are fitted, of **F/3.5** and **F/4.5** aperture. The greatest care is exercised in the fitting and mounting of lenses in all “N & G” Cameras, this being essential if full advantage of the large aperture and high optical qualities given by these lenses is to be utilised to the full.

**TELE-PHOTO LENSES** of the Dallmeyer “Dallan” and Ross “Teleros” type can be fitted to all “Sibyl” models, interchangeably with the normal lens, and are invaluable for distant landscapes, etc.

**THE “BABY SIBYL”** plate model is adapted to take “N & G” double metal dark slides and “N & G” film pack adapter only.

**THE “NEW SPECIAL” AND “NEW IDEAL”** models can be fitted with single metal slides, film pack adapter, roll holder (not fitted “New Ideal”), or “N & G” changing box for 12 plates. The “New Special” can also be supplied with “N & G” double metal dark slides and “N & G” film pack adapter of the same register.





## "SIBYL" CAMERAS.

**PLATE MODELS, complete with 3 "N & G" Metal Double Dark Slides and Focussing Screen.**

**The New "Sibyl Vitesse."**

$3\frac{1}{2} \times 2\frac{1}{2}$  in. or  $6\frac{1}{2} \times 9$  c/m.

Ross F4.5 Xpres Lens ... ..		£30 0 0	
Dallmeyer F3.5 Dalmac Lens ... ..		28 10 0	
Lens.	Baby $4\frac{1}{2} \times 6$ c/m	New Special $3\frac{1}{2} \times 2\frac{1}{2}$ or $6\frac{1}{2} \times 9$ c/m	New Ideal $\frac{1}{4}$ -plate or $4\frac{1}{4} \times 3\frac{1}{4}$
Ross F4.5 Xpres	£19 5 0	£23 0 0	Double Dark Slides cannot be supplied.
T.T. and H. F4.5 SIBYL Aviar	19 5 0	22 10 0	
Dallmeyer F4.5 Serrac	18 10 0	22 5 0	
Wray F4.5 Lustrar ...	17 10 0	21 5 0	

**PLATE MODELS, complete with 6 Single Metal Dark Slides, instead of Double Dark Slides.**

Ross F4.5 Xpres ... ..	Single Dark Slides cannot be supplied.	£21 10 0	£25 0 0
T.T. and H. F4.5 SIBYL Aviar		21 0 0	25 0 0
Dallmeyer F4.5 Serrac ... ..		20 10 0	24 5 0
Wray F4.5 Lustrar ... ..		19 10 0	23 5 0

### ROLL FILM MODELS.

**The New "Sibyl Excelsior."**

$4\frac{1}{2} \times 2\frac{1}{2}$

Ross F4.5 Xpres ... ..	£32 10 0
T.T. and H. F4.5 Sibyl Aviar ... ..	32 10 0
Dallmeyer F4.5 Serrac ... ..	31 15 0

Lens.	Baby $4\frac{1}{2} \times 6$ c/m	New Special $3\frac{1}{2} \times 2\frac{1}{2}$ or $6\frac{1}{2} \times 9$ c/m	New Ideal $\frac{1}{4}$ -plate or $4\frac{1}{4} \times 3\frac{1}{4}$
Ross F4.5 Xpres ... ..	£23 5 0	£26 10 0	£30 15 0
T.T. and H. F4.5 SIBYL Aviar	23 5 0	26 0 0	30 15 0
Dallmeyer F4.5 Serrac ... ..	22 10 0	25 15 0	30 0 0
Wray F4.5 Lustrar ... ..	21 10 0	24 15 0	29 0 0

**TELE-PHOTO LENSES for use with "Sibyl" Cameras.**

Dallmeyer F6.5 Dallon... ..	( $5\frac{1}{4}$ in.)	£5 10 0	(9 in.)	£8 12 6	( $10\frac{1}{2}$ in.)	£11 15 0
Ross F6.8 Telecentric ... ..	—	—	(9 in.)	9 7 6	(11 in.)	10 17 6
Ross F5.5 Teleros ... ..	( $6\frac{1}{4}$ in.)	10 10 0	(9 in.)	12 5 0	(11 in.)	14 15 0

### Prices of "Sibyl" Sundries.

Description.	$4\frac{1}{2} \times 6$ c/m	$6\frac{1}{2} \times 9$ c/m and $3\frac{1}{2} \times 2\frac{1}{2}$	$\frac{1}{4}$ -plate $4\frac{1}{4} \times 3\frac{1}{4}$
New "N & G" Double Book-Form Metal Dark Slide, each ... ..	£0 15 0	£0 17 6	—
"N & G" Pack Film Adapter ... ..	0 18 6	1 10 0	£2 0 0
"N & G" Changing Boxes (12 plates) ... ..	—	5 0 0	5 5 0
Graflex Roll Holder ... ..	—	5 2 0	—
"N & G" Antinous Release ... ..	0 5 0	0 7 6	0 7 6
Light Filter in Holder in Pocket Case ... ..	0 15 6	0 16 6	0 17 6
"Sibyl" Tripod Boards ... ..	0 18 6	0 18 6	0 18 6
"N & G" Folding Lens Hood ... ..	0 17 6	0 17 6	0 17 6
Supplementary Direct Vision Finder, fitted side of Camera, from ... ..	0 17 6	0 17 6	0 17 6
"N & G" Autochrome Slide ... ..	—	2 2 0	2 2 0
New Form Leather Hood for Folding Reflector Finder ... ..	—	0 4 6	0 4 6



## PATENT FOLDING REFLEX

Manufactured in Two Models :—

**SPECIAL for Large Aperture Lenses, F2.9 and F3.5**

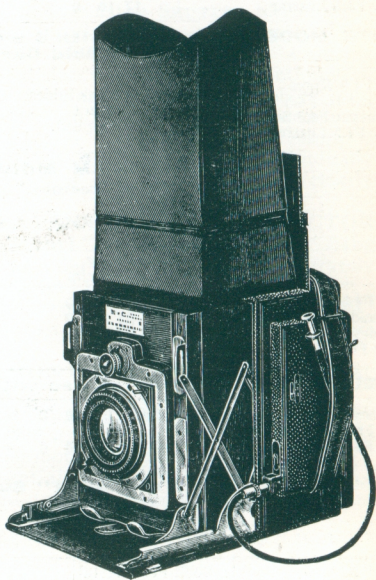
### **STANDARD**

**for F/4.5 Lenses**

And in One Size only,  
namely— $3\frac{1}{2} \times 2\frac{1}{2}$  ins.,  
or  $6\frac{1}{2} \times 9$  c.m.

The product of over  
thirty years' experi-  
ence in the design  
and construction of  
the best.

The Camera is finish-  
ed in the usual  
"N & G" style; to  
previous users of our  
apparatus no more need  
be said, it is simple  
and straightforward to  
manipulate, and, owing  
to the care exercised in  
every detail, gives the  
finest results it is  
possible to obtain.



Standard Model.

### *Brief Specification.*

**CAMERA OPEN.**—Is in every way as rigid as a Box Form Reflex. Single extension only is provided, focussing being done by means of focussing mount on lens, every lens supplied being so fitted.

**CLOSED.**—The Camera is entirely self-contained, with no projections, a long carrying handle being provided.



# “N & G”

## PATENT FOLDING REFLEX

(Continued)

**SHUTTER.** — The “N & G” Self-capping, quick wind focal plane shutter is fitted. Speeds from 1/10 to 1/800th of a second, with ball and time.

**THE MIRROR** is very light and free from noise and vibration when released; all movement catches and stops are of the finest steel to eliminate wear.

**THE RELEASE** is fitted to left side of camera, leaving right hand free for focussing, and is delicate, yet positive, avoiding movement when exposing. Antinous or pneumatic releases can be supplied.

**THE REVOLVING BACK** is adapted to take either “N & G” double book-form metal slides, “N & G” film pack adapter, roll holder, or “N & G” changing boxes.

**RIISING, FALLING, AND HORIZONTAL SWING FRONT** movements are provided in Standard Model only.

**LENSES.**—Only the highest grade **British Lenses** are fitted of F/4.5 aperture, and  $5\frac{1}{4}$  in. focal length in the Standard Model, and F2.9 and F3.5 of approx:  $5\frac{1}{4}$  in., in the Special Model. These are quickly interchangeable with large aperture fixed focus telephoto lenses, of the Ross F/5.5 “Teleros” and Dallmeyer F/5.6 “Dallon” type, by means of the “N & G” quick change lens flange.

**MAGNIFIER LENSES** are fitted to hood to assist focussing, folding inside hood when Camera is closed. A **TRIPOD BUSH** is provided for stand work, and the Standard Model weighs only **3 lbs. 3 ozs.**, complete with F/4.5 lens. Duralumin is used for the entire body-work, and in other parts where possible, and the Camera is **absolutely climate proof.**



Camera Closed.



## PATENT FOLDING REFLEX

(Continued).

**LENS MOUNTING** is a feature which receives the greatest care, and all lenses undergo thorough testing before being passed as suitable for fitting to an "N & G" Camera.

### PRICE LIST OF CAMERA AND SUNDRIES.

*All prices net.*

Camera complete with 3 "N & G" Double Metal Book Form Dark Slides, Dark Slide Adapter, and Hooded Focussing Screen.

#### STANDARD MODEL.

	£	s.	d.
Fitted with Ross F4.5 Xpres Lens, $5\frac{1}{4}$ in. . .	47	10	0
Fitted with T.T. & H. F4.5 Aviar Lens, $5\frac{1}{4}$ in. . .	46	10	0
Fitted with Dallmeyer F4.5 Serrac Lens, $5\frac{1}{4}$ in. . .	47	0	0
Dallmeyer F5.6 Dallon Telephoto Lens, 10 in. focus . . .	15	10	0
Ross F5.5 Teleros Lens, 11 in. focus . . . . .	18	5	0

#### SPECIAL MODEL.

Fitted with Ross F2.9 Xpres Lens, $5\frac{3}{4}$ in. . .	57	0	0
Fitted with Dallmeyer F2.9 Pentac Lens, $5\frac{1}{2}$ in. . .	56	0	0
Fitted with Ross, F3.5 Xpres Lens, $5\frac{3}{4}$ in. . .	53	0	0
Fitted with Dallmeyer F3.5 Dalmac Lens, 6 in. . .	51	0	0
Ross F5.5 Teleros Lens, 11 in. focus . . . . .	18	10	0
Dallmeyer F5.6 Dallon Telephoto Lens, 10 in. focus . . .	15	15	0

"N & G" Metal Double Book form Dark Slides,  
each . . . . .

0 17 6

Film Pack, Adapter,  $3\frac{1}{4} \times 2\frac{1}{4}$  in. . . . .

1 10 0

"N & G" twelve plate Changing Box. . . . .

5 5 0

Graflex Roll Holder,  $3\frac{1}{4}$  in.  $\times$   $2\frac{1}{4}$  in., adapted . . . . .

5 2 0

"N & G" Special Single Autochrome Slide . . . . .

2 2 0

Antinous Release . . . . .

0 5 6

Pneumatic Release Attachment with Time Valve . . . . .

1 5 0

"N & G" Folding Lens Hood, Standard Model . . . . .

0 17 6

"N & G" Folding Lens Hood, Special Model . . . . .

1 1 0

Filter in Holder in Pocket Case, Standard Model . . . . .

0 16 6

Filters for Special Models (To order) . . . . .

"N & G" Patent Walking Stick Tripod . . . . .

3 5 0

Best Solid Leather Velvet Lined Cases to take . . . . .

Standard Model, 3 Double Dark Slides, and . . . . .

Film Pack Adapter . . . . .

3 10 0

Ditto ditto Special Model . . . . .

3 15 0

Ditto ditto Standard Model & F.P.A. . . . .

3 1 0

Ditto ditto Special Model & F.P.A. . . . .

3 5 0