



350

HAWK-EYE CAMERAS & SUPPLIES



THE CAMERA SHOP

Eastman KODAK Agency

KODAKS, ALBUMS and SUPPLIES

Printing, Developing, Enlarging

553 S. SPRING ST. LOS ANGELES

BLAIR CAMERA DIVISION

EASTMAN KODAK COMPANY

ROCHESTER, N.Y., U.S.A.



SPRING TIME.

THE ESSENTIALS OF A PERFECT CAMERA—

QUALITY CONSTRUCTION CONVENIENCE

QUALITY

HAWK-EYES present a neat and handsome appearance, besides being the most serviceable and convenient instruments known in the photographic world.

Their popularity is largely due to the superiority of quality, construction and convenience.

In selecting lenses we are not satisfied with the tests made by the manufacturer, but before using same each one is carefully tested by our own expert to insure uniformity.

CONSTRUCTION

Hawk-Eyes are built in the best possible manner, and no expense is spared in the materials from which they are made.

Each metal part is made from accurately constructed dies, so similar parts of the Hawk-Eyes are interchangeable. Where wood is used in their construction, it is built up in sectional pieces so as to prevent shrinking, warping and swelling. Aluminum is used for making the walls, back cover and bed, which gives strong, light and compact construction. The small trimmings are of brass, highly polished and nickel plated, and the covering of the camera is of the highest grade of seal grain leather.

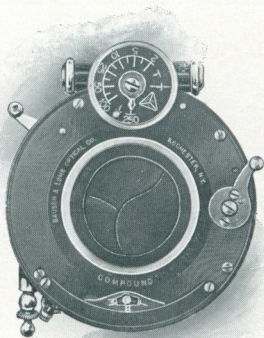
CONVENIENCE

Hawk-Eye Cameras are noted for their compactness, ease of manipulation in loading and unloading, etc., and because they open "*the correct way*," as nine-tenths of one's pictures are taken with a camera held horizontally. Especially note that our stereo cameras are the only folding film cameras taking full-sized stereo pictures.

For a detailed description of our Hawk-Eyes we invite your attention to the following pages:

SHUTTER EQUIPMENT

B. & L. COMPOUND SHUTTER



AN automatic and setting shutter combined, neither adjustment interfering with the other.

Automatic for bulb and time while speeds from $\frac{1}{250}$ to one second are automatically given when the shutter is set.

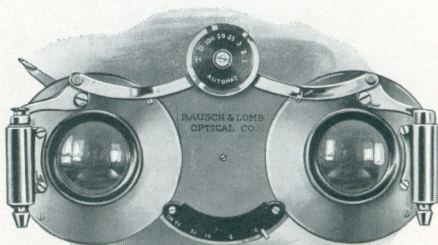
The steel segments forming the shutter leaves are star-shaped, giving even illumination over the entire field from the instant the exposure is started.

This shutter is made of aluminum, beautifully finished, accurate, compact, speedy and dust-proof, particularly well adapted for use on hand cameras.

B. & L. STEREO AUTOMATIC SHUTTER

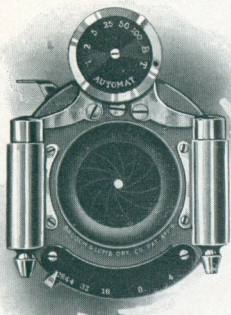
THIS shutter is made up by a combination of two automatic shutters, both working in unison, adapted for stereoscopic exposures.

It is of the highest grade, strictly automatic, perfectly balanced and accurately regulated as to the variation of speed, ranging from $\frac{1}{100}$ to one second, also time and bulb. Fitted with Iris diaphragm which allows the aperture to be changed at will. It is handsomely finished, compact, durable and practically dust-proof. Furnished as regular equipment on Stereo Hawk-Eye Model 4.



SHUTTER EQUIPMENT

B. & L. AUTOMATIC SHUTTER



ALL the latest and best ideas are embodied in the B. & L. Automatic Shutter. It is of the highest grade, strictly automatic, perfectly balanced and accurately regulated as to the variation of speed, ranging from one second to $\frac{1}{100}$ of a second, also time and bulb. An Iris diaphragm allows the aperture to be changed at will. We recommend this shutter for use with anastigmat lenses.

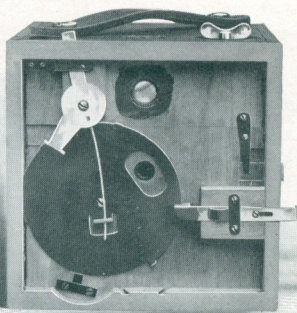
Furnished as regular equipment on the following Hawk-Eyes:

No. 3 Folding Hawk-Eye, Model 6
No. 3-A Folding Hawk-Eye, Model 4

No. 4 Folding Hawk-Eye, Model 3
No. 4 Folding Hawk-Eye, Model 4

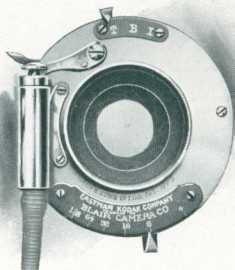
SHUTTER USED ON NOS. 2, 4, 5 AND 7
WENO HAWK-EYE

THE Hawk-Eye Rotary Shutter is used on the box style of cameras, and in connection with a single set focus Meniscus Lens, makes an ideal combination. Being rotary in design and evenly balanced, it works with the same speed and accuracy in either horizontal or vertical position. The exposures are made by pushing the release lever to the right or left or *vice versa*, and it is easily changed from instantaneous to time by drawing out the time catch. The Hawk-Eye Rotary Shutter is thoroughly reliable and is one of the main features which make the Weno Hawk-Eye popular.



SHUTTER EQUIPMENT

SHUTTER USED ON NOS. 1-A, 3 AND 3-A FOLDING HAWK-EYE



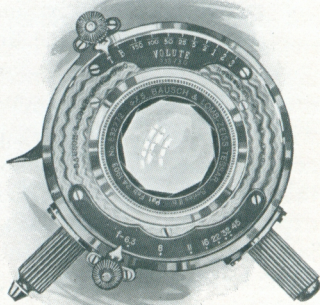
A SHUTTER of convenience, simplicity and perfection; dainty in its appearance, and of the highest grade of single valve type. It has both finger and bulb release, making an exposure when set on "I" of about $\frac{1}{50}$ of a second. "T" indicates time, requiring one pressure to open and another to close. "B" is a time ex-

posure in reality, the shutter remaining open as long as the pressure is held on the bulb or the finger release.

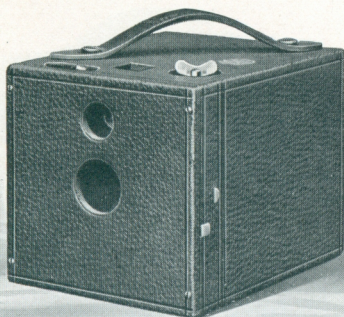
Regularly furnished on the No. 1-A Folding Hawk-Eye, No. 3 Folding Hawk-Eye, Model 7, and No. 3-A Folding Hawk-Eye, Model 3.

B. & L. VOLUTE SHUTTER

THE opening and closing point of the Volute Shutter being at the diaphragm point in the lens, gives the maximum illumination with the minimum motion, absolutely uniform exposure and an increase in the depth of focus, covering power, and definition of the lens, with no distortion of the image; the entire picture impressing itself upon the plate from the moment the shutter begins to open until it closes. It is made of aluminum, handsomely finished, rapid, compact, convenient, dust proof and durable.



No. 2 WENO HAWK-EYE



THIS instrument makes a picture $3\frac{1}{2} \times 3\frac{1}{2}$ inches, which has been a very popular size for the past fourteen years. It is moderate in price, and while it is very simple in construction, yet it has many improvements not included in cameras at twice its cost.

While this camera was primarily designed for the beginner, yet it finds favor with the more advanced photographer who desires a compact box camera giving a sharp, clear picture without focusing.

The No. 2 Weno Hawk-Eye is so arranged that when a hidden button is pressed, the camera may be readily opened, allowing the spool of film to be taken out or placed in the camera. All parts are intact, so there is no danger of losing a ratchet, rod or cover in loading or unloading.

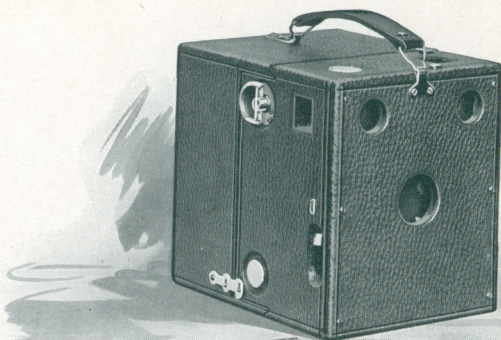
The film adapted for use in this Hawk-Eye is known as No. 2 Bulls-Eye, Blair Non-Curling or Kodak Film.

DETAILS: Made of selected whitewood and cherry, covered with seal grain morocco leather; trimmings of polished brass, nickel plated; pictures $3\frac{1}{2} \times 3\frac{1}{2}$ inches; capacity 12 exposures; size of camera $4\frac{1}{4} \times 4\frac{1}{2} \times 5\frac{1}{2}$ inches; weight 20 ounces; lens fixed focus Achromatic with rotary shutter and set of three stops, tripod socket and brilliant finder.

PRICE LIST

| | |
|--|--------|
| No. 2 Weno Hawk-Eye, not loaded, | \$5.00 |
| Blair Non-Curling Cartridge Film, 6 exposures, $3\frac{1}{2} \times 3\frac{1}{2}$, | .30 |
| Blair Non-Curling Cartridge Film, 12 exposures, $3\frac{1}{2} \times 3\frac{1}{2}$, | .60 |
| Weno Hawk-Eye Portrait Attachment, | .50 |
| Black Sole Leather Carrying Case, with shoulder strap, | 1.25 |

NO. 4 WENO HAWK-EYE



FOR those who desire an efficient instrument taking a picture 4 x 5 inches, we highly recommend this box camera. A special feature in this instrument is that the lens is always in focus and all objects from 8 feet to any distance required are covered sharply.

This camera is simply yet strongly constructed, and is complete in every detail. The three diaphragm stops are carefully considered in regard to enlarging and reducing the aperture in accordance with the volume of light required for properly timing the negative.

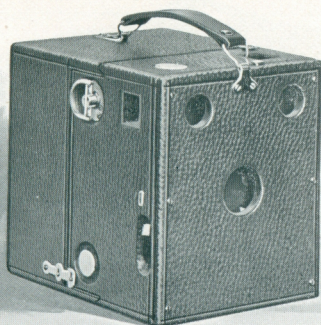
In the last few years many improvements in camera building have enabled us to make an instrument only about half the size of the usual non-folding cameras, yet particularly satisfactory in every respect. This Hawk-Eye is arranged to use No. 4 Bulls-Eye, Blair Non-Curling or Kodak film.

DETAILS: Made of selected whitewood and cherry, covered with seal grain morocco leather; trimmings of polished brass, nickel plated; pictures 4 x 5 inches; capacity 12 exposures; size of camera 5 x 5 $\frac{7}{8}$ x 6 $\frac{1}{2}$ inches; weight 28 ounces; lens, fixed focus Achromatic Meniscus with rotary shutter and set of three stops, tripod sockets and brilliant finders.

PRICE LIST

| | |
|--|--------|
| No. 4 Weno Hawk-Eye, Model 2 not loaded, | \$8.00 |
| Blair Non-Curling Cartridge Film, 6 exposures, 4 x 5, | .45 |
| Blair Non-Curling Cartridge Film, 12 exposures, 4 x 5, | .90 |
| Weno Hawk-Eye Portrait Attachment, | .50 |
| Black Sole Leather Carrying Case, with shoulder strap, | 1.50 |

No. 5 WENO HAWK-EYE



THE No. 5 Weno Hawk-Eye makes a photo $3\frac{1}{4} \times 4\frac{1}{4}$ inches and is a very compact box form instrument, provided with an Automatic Shutter and Universal Focus Lens, which enables the user to make snap-shots of many subjects which would be lost in an attempt to get a folding camera in readiness for operation. The construction is exceedingly simple; the back section telescoping, which is easily removed by releasing the catches, thus giving access to the film chambers. There are no loose nor unnecessary parts to this camera, everything being well made.

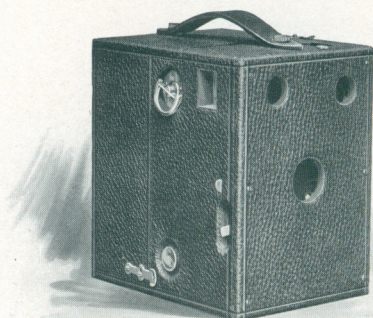
Like all of our cameras, this instrument undergoes the same rigid factory inspection which assures the user satisfactory pictures. Besides, there are no complicated parts, simplicity being the key-note of construction. The film for use in this camera is known as No. 3 F. P. K. Non-Curling Blair or Eastman Film.

DETAILS: Made of selected whitewood and cherry, covered with seal grain morocco leather; trimmings of polished brass, nickel plated; pictures $3\frac{1}{4} \times 4\frac{1}{4}$ inches; capacity 12 exposures; size of camera $4\frac{1}{2} \times 5\frac{3}{8} \times 6\frac{3}{8}$ inches; weight 27 ounces; lens fixed focus Achromatic Meniscus with rotary shutter and set of three stops, tripod sockets and brilliant finders.

PRICE LIST

| | |
|--|--------|
| No. 5 Weno Hawk-Eye, Model 2, not loaded, | \$7 50 |
| Blair Non-Curling Cartridge Film, 6 exposures, $3\frac{1}{4} \times 4\frac{1}{4}$, | .35 |
| Blair Non-Curling Cartridge Film, 12 exposures, $3\frac{1}{4} \times 4\frac{1}{4}$, | .70 |
| Weno Hawk-Eye Portrait Attachment, | .50 |
| Black Sole Leather Carrying Case, with shoulder strap, | 1.50 |

NO. 7 WENO HAWK-EYE



THIS Hawk-Eye, without question, is one of the finest box form cameras manufactured—simple, compact and inexpensive, yet well made in every particular and splendidly equipped.

Built along similar lines and with the same care as our other box cameras, this instrument possesses an advantage in the size of picture $3\frac{1}{4} \times 5\frac{1}{2}$ (the post card size)—a shape which produces artistic landscapes when used horizontally, or with the addition of a Hawk-Eye portrait attachment, portraits of delicate softness when used in a vertical position.

The lenses in these instruments are very carefully selected and inspected so that they cover the field with extreme sharpness of distances ranging from 8 to 100 feet or more and making the No. 7 Weno Hawk-Eyes noted for their practical excellence. Film for this camera is known as No. 3-A F. P. K., Blair or Eastman Non-Curling film.

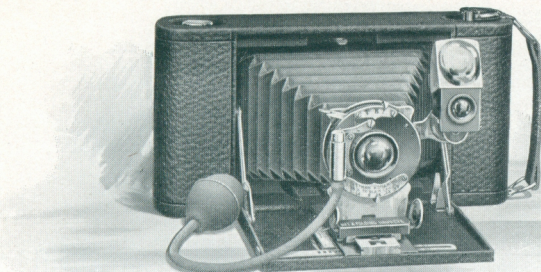
DETAILS: Made of selected whitewood and cherry, covered with seal grain morocco leather; trimmings of polished brass, nickel plated; pictures $3\frac{1}{4} \times 5\frac{1}{2}$ inches; capacity 10 exposures; size of camera $4\frac{3}{4} \times 6\frac{3}{8} \times 6\frac{7}{8}$ inches; weight 30 ounces; lens, fixed focus Achromatic Meniscus with rotary shutter and set of three stops, tripod sockets and brilliant finders.

PRICE LIST

| | |
|--|--------|
| No. 7 Weno Hawk-Eye, not loaded, | \$8.00 |
| Blair Non-Curling Cartridge Film, 6 exposures, $3\frac{1}{4} \times 5\frac{1}{2}$, | .40 |
| Blair Non-Curling Cartridge Film, 10 exposures, $3\frac{1}{4} \times 5\frac{1}{2}$, | .70 |
| Weno Hawk-Eye Portrait Attachment, | .50 |
| Black Sole Leather Carrying Case, with shoulder strap, | 1.50 |

No. 1-A FOLDING HAWK-EYE

MODEL 1



THE No. 1-A Folding Hawk-Eye camera possesses individuality and elegance; is devoid of all complications yet perfectly adapted for all-around work. It is the smallest camera fitted with Pneumatic Release shutter; strictly high grade, handsomely designed and beautifully finished.

The lens furnished with regular equipment is a Rapid Rectilinear of excellent definition, brilliancy and depth, with splendid covering power.

A Single Achromatic Meniscus lens of fixed focus, when fitted to this camera, makes a desirable outfit which does not require any judgment of distances nor use of focusing scale, and produces negatives full of detail and depth.

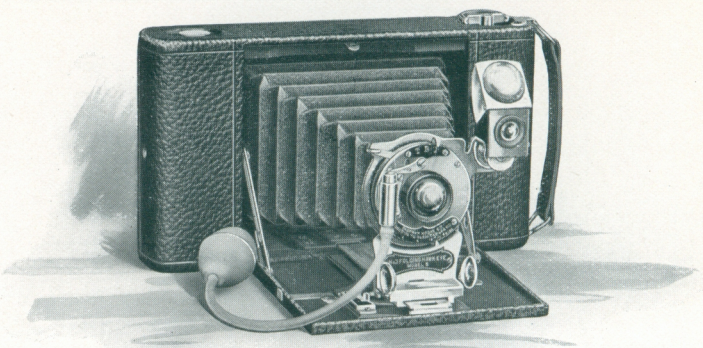
DETAILS: Made of aluminum; covered with seal grain leather; trimmings polished brass, nickel plated; pictures $2\frac{1}{2}$ x $4\frac{1}{4}$ inches; capacity 12 exposures; size of camera $1\frac{3}{4}$ x 4 x $7\frac{3}{4}$ inches; weight 24 ounces; No. 1 single valve Automatic shutter; Rapid Rectilinear lens; automatic focusing lock; tripod socket; brilliant reversible finder. Uses No. 1-A F. P. K. Blair or Eastman Film.

PRICE LIST

| | |
|--|---------|
| No. 1-A Folding Hawk-Eye, Auto. Focusing Lock and R.R. Lens, not loaded, | \$14.00 |
| No. 1-A Folding Hawk-Eye, Single Lens, not loaded, | 12.50 |
| No. 1-A Folding Hawk-Eye, with No. 1 Zeiss Kodak Anastigmat Lens and No. 0 Compound Shutter, not loaded, | 43.40 |
| No. 1-A Folding Hawk-Eye, with Series II-b No. 3 Tessar Lens and No. 0 Compound Shutter, not loaded, | 54.40 |
| Blair Non-Curling Cartridge Film, 6 exposures, $2\frac{1}{2}$ x $4\frac{1}{4}$, | .25 |
| Blair Non-Curling Cartridge Film, 12 exposures, $2\frac{1}{2}$ x $4\frac{1}{4}$, | .50 |
| Hawk-Eye Portrait Attachment, | .50 |
| Black Sole Leather Carrying Case, with shoulder strap, | 1.25 |

NO. 3 FOLDING HAWK-EYE

MODEL 7



THE No. 3 Folding Hawk-Eye, Model 7, is a perfectly appointed camera, extremely compact and convenient, possessing all the modern ideas in camera construction. Simplicity has been considered in its design, making it a particularly desirable instrument for the beginner.

The standard is clamped automatically to the front bed plate; the shutter is automatic with Iris diaphragm, and the Rapid Rectilinear lens with 5 inch equivalent focus gives proper perspective and excellent depth and definition.

The No. 3 is also furnished with a single Achromatic Meniscus lens which requires no judgment as to distances—all objects 8 feet or over being in sharp focus.

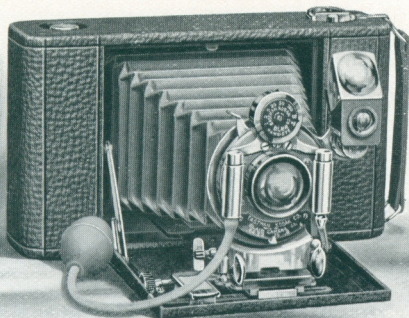
DETAILS: Made of aluminum; covered with seal grain leather; trimmings polished brass, nickel plated; pictures $3\frac{1}{4} \times 4\frac{1}{4}$ inches; capacity 12 exposures; size of camera $1\frac{7}{8} \times 4\frac{5}{8} \times 8$ inches; weight 25 ounces; No. 1 single valve Automatic shutter; Rapid Rectilinear lens; automatic focusing lock; two tripod sockets; brilliant reversible finder. Uses No. 3 F. P. K. Blair or Eastman Film.

THE PRICE

| | |
|--|---------|
| No. 3, Model 7, Automatic Focusing Lock, R. R. Lens, not loaded, . . . | \$15.00 |
| No. 3 Folding Hawk-Eye, Model 7, Single Lens, not loaded, . . . | 13.50 |
| No. 3, Model 7, with No. 1 Zeiss Kodak Anastigmat Lens, Compound Shutter, . . . | 44.30 |
| No. 3, Model 7, with Ser. II-b No. 3 Tessar Lens, Compound Shutter, . . . | 55.30 |
| Blair Non-Curling Cartridge Film, 6 exposures, $3\frac{1}{4} \times 4\frac{1}{4}$, . . . | .35 |
| Blair Non-Curling Cartridge Film, 12 exposures, $3\frac{1}{4} \times 4\frac{1}{4}$, . . . | .70 |
| Hawk-Eye Portrait Attachment, | .50 |
| Glass Plate Attachment (only), | 3.50 |
| Black Sole Leather Carrying Case, with shoulder strap, | 1.25 |

No. 3 FOLDING HAWK-EYE

MODEL 6



THE No. 3 Folding Hawk-Eye, Model 6, is designed for those who desire an outfit for a wider range of work than can be accomplished successfully with the Model No. 5.

The superiority of this camera is in the $5\frac{1}{2}$ inches equivalent focus Rapid Rectilinear lens working at a speed of f-8, the B. & L. double valve Automatic shutter with accurately graduated speeds from $\frac{1}{100}$ to 1 second, the rising front and the bed plate operated by means of rack and pinion.

This camera is perfect in construction, light, strong and handsomely finished.

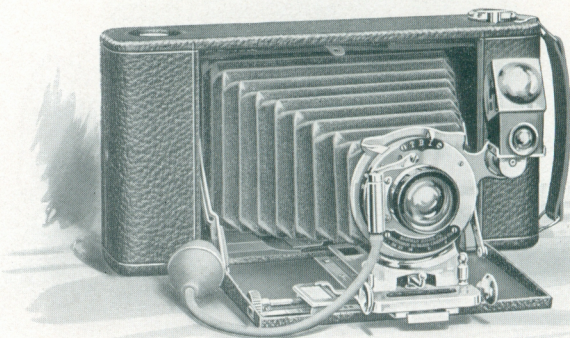
DETAILS: Made of aluminum; covered with seal grain leather; trimmings polished brass, nickel plated; pictures $3\frac{1}{4} \times 4\frac{1}{4}$ inches; capacity 12 exposures; size of camera $1\frac{7}{8} \times 4\frac{5}{8} \times 8$ inches; weight 30 ounces; No. 1 B. & L. Automatic shutter; R. R. lens; rack and pinion; rising front; two tripod sockets; brilliant reversible finder. Uses No. 3 F. P. K. Blair or Eastman Film.

PRICE LIST

| | |
|--|---------|
| No. 3 Model 6, B. & L. or Kodak Automatic Shutter, not loaded, . . . | \$22.00 |
| No. 3 Model 6, with No. 2 Zeiss-Kodak Anastigmat Lens, Compound Shutter, . . . | 48.60 |
| No. 3 Model 6, with Ser. II-b No. 4 Tessar Lens, Auto. Shutter, . . . | 52.80 |
| No. 3 Model 6, with Ser. II-b No. 4 Tessar Lens, Compound Shutter, . . . | 61.10 |
| Blair Non-Curling Cartridge Film, 6 exposures, $3\frac{1}{4} \times 4\frac{1}{4}$, . . . | .35 |
| Blair Non-Curling Cartridge Film, 12 exposures, $3\frac{1}{4} \times 4\frac{1}{4}$, . . . | .70 |
| Hawk-Eye Portrait Attachment, | .50 |
| Glass Plate Attachment (only), | 3.50 |
| Single Glass Plate Holder for $3\frac{1}{4} \times 4\frac{1}{4}$ plates, | .50 |
| Black Sole Leather Carrying Case, with shoulder strap, | 1.25 |

No. 3-A FOLDING HAWK-EYE

MODEL 3



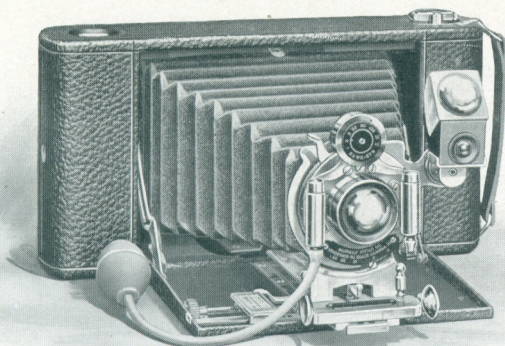
THE No. 3-A Folding Hawk-Eye is the highest attainment of what may be classed pocket camera construction, folding in such compact form that it may readily be carried in a top coat pocket. It has all the features and adjustments found on cameras of three times its bulk, and these coupled with its capacity of ten exposures $3\frac{1}{4} \times 5\frac{1}{2}$, commend it to the most advanced amateur. Like all Folding Hawk-Eyes, the No. 3-A opens horizontally, as most pictures are taken with the camera in this position.

A desirable feature embodied in the equipment of the No. 3-A is the rack and pinion for focusing, also the sliding front which is useful when photographing tall buildings or similar objects. The lenses furnished with the regular equipment are the highest grade of Rectilinear type, and each one is carefully tested to insure uniformity. They have a focal length of $6\frac{1}{2}$ inches, which length overcomes all distortion, produces correct perspective, and work at a speed of f-8.

The No. 3-A Folding Hawk-Eye, Model 3, is fitted with the single valve Automatic shutter illustrated and described on page 6. The Model 4 is equipped with the No. 1 Bausch & Lomb Automatic shutter, having variable speeds ranging from 1 second to $\frac{1}{100}$ of a second, also time and bulb exposure.

No. 3-A FOLDING HAWK-EYE

MODEL 4



WITH this shutter the camera is capable of a wide range of work. It is constructed so as to admit of adapting Anastigmat lenses, and when so equipped makes the highest possible grade of instrument which can be produced. It is compact, handsome and efficient.

DETAILS: Made of aluminum; covered with seal grain leather; trimmings polished brass, nickel plated; pictures $3\frac{1}{4} \times 5\frac{1}{2}$ inches; capacity 10 exposures; size of camera $2 \times 4\frac{3}{4} \times 9\frac{5}{8}$ inches; weight 33 ounces; Model 3, No. 2 single valve shutter; Model 4, No. 1 B. & L. Automatic shutter; Rapid Rectilinear lens; rack and pinion; sliding front; two tripod sockets; brilliant reversible finder. Uses No. 3-A F. P. K. Blair or Eastman Film.

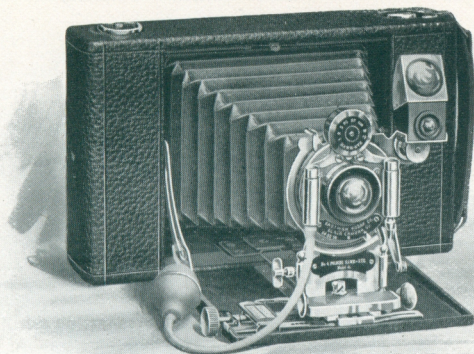
PRICE LIST

| | |
|--|---------|
| No. 3-A Folding Hawk-Eye, Model 3, with R. R. Lens and Single Valve Automatic Shutter, not loaded, | \$20.00 |
| No. 3-A Folding Hawk-Eye, Model 4, with R. R. Lens and B. & L. or Kodak Automatic Shutter, not loaded, | 25.00 |
| No. 3-A, Model 4, with No. 3 Zeiss Kodak Anastigmat Lens and Auto. Shutter, | 47.50 |
| No. 3 A, Model 4, with No. 3 Zeiss Kodak Anastigmat Lens and Compound Shutter, | 58.30 |
| No. 3-A, Model 4, with Ser. II-b No. 5 Tessar Lens and Auto. Shutter, | 56.50 |
| No. 3-A, Model 4, with Ser. II-b No. 5 Tessar Lens and Compound Shutter, | 67.30 |
| Blair Non-Curling Cartridge Film, 6 exposures, $3\frac{1}{4} \times 5\frac{1}{2}$, | .40 |
| Blair Non-Curling Cartridge Film, 10 exposures, $3\frac{1}{4} \times 5\frac{1}{2}$, | .70 |
| Hawk-Eye Portrait Attachment, | .50 |
| Glass Plate Attachment (only), | 3.50 |
| Double Glass Plate Holders for $3\frac{1}{4} \times 5\frac{1}{2}$ plates, | 1.00 |
| Black Sole Leather Carrying Case, with shoulder strap, | 1.50 |



No. 4 FOLDING HAWK-EYE

MODEL 3.



THIS camera is constructed to meet the approval of the most exacting purchaser. The design and details have been worked out on scientific principles and as a result a most compact, complete and efficient instrument has been produced.

The No. 4 Folding Hawk-Eye opens horizontally. Thus ninety per cent. of the pictures are made with camera and shutter in its true position to obtain the best results. The standard is automatically clamped to front bed plate and is adjustable — rising or to either side. The No. 4 Folding Hawk-Eye is light, strong, handsomely finished and uses No. 4 Screen Focus Blair or Kodak film.

DETAILS: Made of aluminum, covered with seal grain leather; trimmings of polished brass, nickel plated; pictures 4 x 5 inches; capacity 12 exposures; size of camera 2 x 5 x 9 1/8 inches; weight 35 ounces; B. & L. Auto shutter; R. R. lens; rack and pinion for focusing; two tripod sockets and brilliant finder.

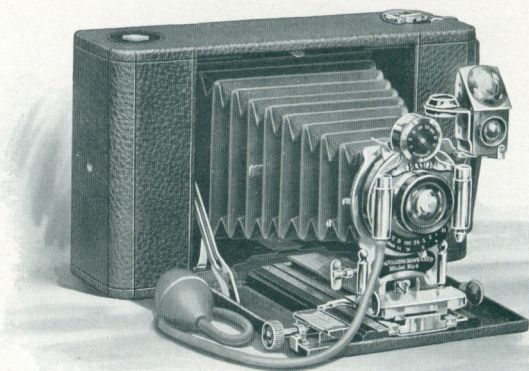
PRICE LIST

| | |
|--|---------|
| No. 4, Model 3, with B. & L. or Kodak Shutter, R. R. Lens, not loaded, | \$25.00 |
| No. 4, Model 3, S. V. Shutter, R. R. Lens, not loaded, | 20.00 |
| No. 4, Model 3, S. V. Shutter, Achromatic Lens, not loaded, | 19.00 |
| No. 4, Model 3, No. 3 Zeiss Kodak Lens, Compound Shutter, | 58.30 |
| No. 4, Model 3, Series II-b, No. 5 Tessar Lens, Auto. Shutter, | 56.50 |
| *Blair Non-Curling Cartridge Film, 6 exposures, 4 x 5, | .45 |
| *Blair Non-Curling Cartridge Film, 12 exposures, 4 x 5, | .90 |
| Hawk-Eye Portrait Attachment, | .50 |
| Glass Plate Attachment (only), | 3.50 |
| Single Glass Plate Holder, | .75 |
| Black Sole Leather Carrying Case, with shoulder strap, | 1.50 |

—*In ordering Film specify Screen Focus.

No. 4 FOLDING HAWK-EYE

MODEL 4



THE No. 4 Folding Hawk-Eye, Model 4, while designed for a wide range of work, still has the simplicity embodied in all Hawk-Eyes. Compactness combined with the completeness of its equipment places it in a class by itself. The regular optical equipment is a Bausch & Lomb Rapid Symmetrical lens, working at a speed of f-8. This, coupled with the improved B. & L. Automatic shutter, illustrated and described on page 5, enables the user to make pictures under conditions which are not favorable to photography, as the lens will cover sharp to the corners with the diaphragm 4.

The bellows draw of $13\frac{3}{4}$ inches admits the use of the back combination of the lens alone—a great advantage in making distant views, as often an object is so far away that the effect when made with a doublet is too small to be of any use.

By using the back combination of the lens, the subject in the picture will be twice the size of the same subject at the same distance, made with a doublet. The following illustrations demonstrate how a distant object may be brought at close range. In designing the No. 4 Folding Hawk-Eye, Model 4, nothing has been neglected. Every attachment of any value has been arranged for. It has an automatic standard clamp, rising, falling and sliding front, and rack and pinion

NO. 4 FOLDING HAWK-EYE

MODEL 4

for focusing. Two scales are provided, one for use with doublet and the other for the back combination of the lens.



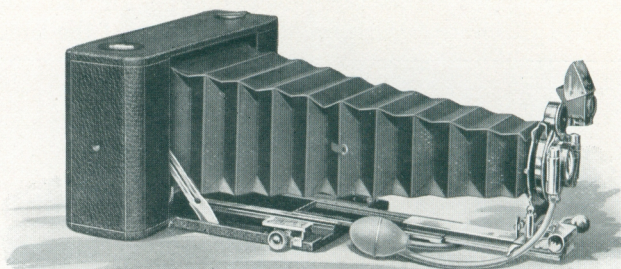
Made with Doublet—Distance 1000 feet.



Made with Back Combination—Distance 1000 feet.

No. 4 FOLDING HAWK-EYE

MODEL 4



When used with the glass plate attachment the camera, on account of having a long bellows, makes an efficient copying and enlarging outfit, as well as being very useful for photographing small objects close to the camera and in taking large sized portraits without a portrait attachment.

The No. 4 Folding Hawk-Eye, Model 4, is rigid, compact, efficient, beautifully finished, and will meet with the favor of those who desire the most complete and compact film camera made.

DETAILS : Made of aluminum ; covered with seal grain leather ; trimmings polished brass, nickel plated ; pictures 4 x 5 inches ; capacity 12 exposures ; size of camera $2\frac{1}{4}$ x $5\frac{1}{2}$ x $9\frac{1}{8}$ inches ; weight 45 ounces ; No. 1 B. & L. Automatic shutter ; Rapid Symmetrical lens ; triple extension bed ; $13\frac{3}{4}$ inches bellows draw ; rack and pinion ; rising front ; two tripod sockets ; brilliant reversible finder. Uses No. 4 Screen Focus Blair or Eastman Film.

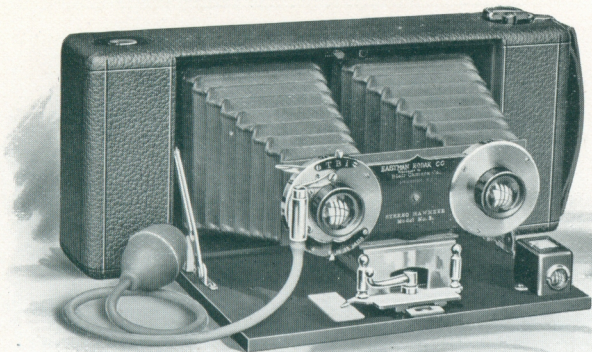
PRICE LIST

| | |
|---|----------|
| No. 4 Folding Hawk-Eye, Model 4, R. S. Lens, not loaded, | \$ 30.00 |
| No. 4 Folding Hawk-Eye, Model 4, with Series VII-a No. 7 Zeiss Lens and Automatic Shutter, | 91.50 |
| No. 4 Folding Hawk-Eye, Model 4, with Series VII-a No. 7 Zeiss Lens and No. 1 Compound Shutter, | 102.30 |
| *Blair Non-Curling Cartridge Film, 6 exposures, 4 x 5, | .45 |
| *Blair Non-Curling Cartridge Film, 12 exposures, 4 x 5, | .90 |
| Hawk-Eye Portrait Attachment | .50 |
| Glass Plate Attachment (only), | 3.50 |
| Single Glass Plate Holder for 4 x 5 plates, | .75 |
| Black Sole Leather Carrying Case, with shoulder strap, | 1.75 |

—*In ordering Films specify Screen Focus.

STEREO HAWK-EYE

MODEL 3



[N the branch of photography for which this Hawk-Eye is designed, realistic observation is produced by making two negatives of the same subject at the same time, with two lenses of the same focal length, placed in the shutter with a separation of about $3\frac{1}{4}$ inches between centers. While the negatives look alike, yet they are not, because each is made from a different angle and thus more than half a circle is photographed. These two pictures, when viewed through a stereoscope, produce actual visual effects, thus giving the same impression as when viewing the things themselves.

In making Stereo prints it is necessary to transpose either the negatives before printing or the prints before mounting. The reason of this is that the lens throws the image on the film bottom side up, so when the negatives are viewed right side up, the one on the right is the negative made by the left lens in the camera. To correct this, the negatives or prints must be transposed; and to simplify this, the Stereo Hawk-Eye Self-Transposing Printing Frame should be used. This frame, illustrated and described on the following page, is for film negatives only, and is not adapted for glass plates.

STEREO HAWK-EYE SELF-TRANSPOSING PRINTING FRAME



THE use of the above illustrated frame makes Stereo printing as simple as any other, and the great drawback to making Stereographs is removed. No picture carries the weight as does the Stereograph, because the roundness and perfect perspective is lacking in all others.

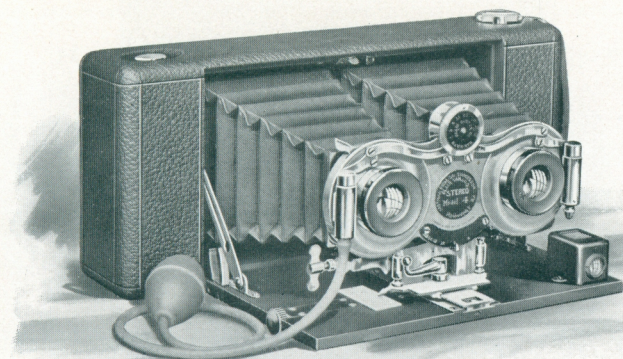
The Stereo Self-Transposing Printing Frame does away with the trimming of the negatives, so the prints made from them seem as one picture when viewed through the stereoscope, and with the use of die cut paper all trimming of the print is done away with.

Stereo Hawk-Eyes are made in two models. The Model No. 3 is fitted with B. & L. single valve Stereo shutter having Iris diaphragm and time, bulb and instantaneous exposure. The Model No. 4 is equipped with B. & L. No. 1 Stereo Automatic shutter, having variable speeds accurately graduated from $\frac{1}{100}$ to one second, described on page 4.

The lenses in both models are of the highest grade of Rapid Rectilinear type, carefully tested and accurately matched, thus producing the same perspective, density and detail in each negative. They have an equivalent focus of 5 inches, great depth and covering power, and work at a speed of f-8. They become universal focus when the diaphragm is set at 16 and the standard clamped at 25 feet. This is

STEREO HAWK-EYE

MODEL 4



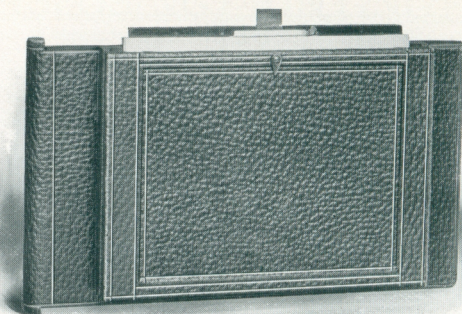
almost necessary in making Stereo pictures, as the subject in the foreground as well as the distance should be in sharp focus.

DETAILS : Made of selected cherry and mahogany, all joints dovetailed ; covered with seal grain leather ; trimmings polished brass, nickel plated ; pictures Standard Stereo size ; capacity 6 Stereo exposures ; size of camera $1\frac{7}{8} \times 4\frac{3}{8} \times 10\frac{1}{4}$ inches ; weight 28 ounces ; Model 3, single valve Stereo Automatic shutter ; Model 4, double valve Stereo Automatic shutter ; matched Rapid Rectilinear lenses ; rising front ; rack and pinion for focusing ; tripod socket ; brilliant finder. Uses No. 2 Bulls-Eye Blair or Eastman Film.

PRICE LIST

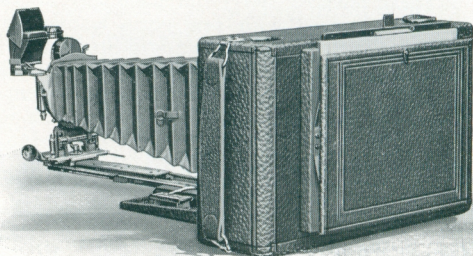
| | |
|--|---------|
| Stereo Hawk-Eye, Model 3, R. R. Lenses, not loaded, | \$25.00 |
| Stereo Hawk-Eye, Model 4, R. R. Lenses, not loaded, | 35.00 |
| Stereo Hawk-Eye, Model 4, fitted with Series II-b No. 3 Tessar Lenses and Stereo Automatic Shutter, | 94.55 |
| Stereo Hawk-Eye, Model 4, fitted with Series II-b No. 4 Tessar Lenses and Stereo Automatic Shutter, | 98.55 |
| Stereo Hawk-Eye, Model 4, fitted with No. 1 Zeiss Kodak Anastigmat Lenses, Stereo Automatic Shutter, | 72.55 |
| Stereo Hawk-Eye, Model 4, fitted with No. 2 Zeiss Kodak Anastigmat Lenses, Stereo Automatic Shutter, | 73.55 |
| Blair Non-Curling Cartridge Film, 3 exposures, for Stereo $3\frac{1}{2} \times 3\frac{1}{2}$, | .30 |
| Blair Non-Curling Cartridge Film, 6 exposures, for Stereo $3\frac{1}{2} \times 3\frac{1}{2}$, | .60 |
| Stereo Hawk-Eye Self Transposing Printing Frame, | 1.50 |
| Glass Plate Attachment (only), | 3.50 |
| Single Glass Plate Holder for Stereo plates, $3\frac{1}{4} \times 6\frac{1}{2}$, | 1.00 |
| Black Sole Leather Carrying Case, with shoulder strap, | 1.50 |

PLATE ATTACHMENT



BY the use of the Plate Attachment, which fits interchangeably with the back cover, Folding Hawk-Eyes may be converted into efficient plate cameras.

These attachments are fitted with spring actuating ground glass, and are made to fit No. 3, Models 5, 6 and 7, No. 3-A, Models 1, 2, 3 and 4, No. 4, Models 3 and 4, and Stereo, Models 3 and 4.



Folding Hawk-Eye Showing Bed Extended;
Fitted with Plate Attachment

—PRICE LIST—

| | |
|--|--------|
| Plate Attachment only, for No. 3 Folding Hawk-Eye, Models 5, 6 and 7, . | \$3.50 |
| Plate Attachment only, for No. 3-A Folding Hawk-Eye, Models 1, 2, 3 and 4, . | 3.50 |
| Plate Attachment only, for No. 4 Folding Hawk-Eye, Models 3 and 4, . | 3.50 |
| Plate Attachment only, for Stereo Hawk-Eye, Models 3 and 4, . | 3.50 |
| Single Plate Holder, $3\frac{1}{4} \times 4\frac{1}{4}$, | .50 |
| Single Plate Holder 4×5 , | .75 |
| Double Plate Holder, $3\frac{1}{4} \times 5\frac{1}{2}$, | 1.00 |
| Stereo Plate Holders $3\frac{1}{4} \times 6\frac{1}{2}$, | 1.00 |

When ordering Plate Attachment specify model of camera.

HAWK-EYES FITTED WITH LENSES of the HIGHEST GRADE

(The prices given in this table are net.)

FOLDING HAWK-EYES FITTED WITH No. 0 COMPOUND SHUTTER

| | |
|---|----------|
| No. 1-A Model 1 with No. 3 Tessar lens, Series II-b, . . . | \$ 54.40 |
| No. 1-A Model 1 with No. 1 Zeiss Kodak Anastigmat lens, . . | 43.40 |
| No. 3 Model 6 with No. 4 Tessar lens, Series II-b, . . . | 61.10 |
| No. 3 Model 6 with No. 2 Zeiss Kodak Anastigmat lens, . . | 48.60 |
| No. 3 Model 7 with No. 3 Tessar lens Series II-b, . . . | 55.30 |
| No. 3 Model 7 with No. 1 Zeiss Kodak Anastigmat lens, . . | 44.30 |

FOLDING HAWK-EYES FITTED WITH No. 1 COMPOUND SHUTTER

| | |
|---|----------|
| No. 3-A Model 4 with No. 5 Tessar lens, Series II-b, . . . | \$ 67.30 |
| No. 3-A Model 4 with No. 3 Zeiss Kodak Anastigmat lens, . . | 58.30 |
| No. 4 Model 3 with No. 5 Tessar lens, Series II-b, . . . | 67.30 |
| No. 4 Model 3 with No. 3 Zeiss Kodak Anastigmat lens, . . | 58.30 |
| No. 4 Model 4 with No. 7 Zeiss Protar lens, Series VII-a, . | 102.30 |

FOLDING HAWK-EYES FITTED WITH No. 1 VOLUTE SHUTTER

| | |
|---|----------|
| No. 3 Model 6 with No. 4 Tessar lens, Series II-b, . . . | \$ 66.10 |
| No. 3 Model 6 with No. 2 Zeiss Kodak Anastigmat lens, . . | 53.60 |
| No. 3-A Model 4 with No. 5 Tessar lens, Series II-b, . . . | 69.80 |
| No. 3-A Model 4 with No. 3 Zeiss Kodak Anastigmat lens, . . | 60.80 |
| No. 4 Model 3 with No. 5 Tessar lens, Series II-b, . . . | 69.80 |
| No. 4 Model 3 with No. 2 Zeiss Kodak Anastigmat lens, . . | 60.80 |
| No. 4 Model 4 with No. 7 Zeiss Protar lens, Series VII-a, . | 104.80 |

FOLDING HAWK-EYES FITTED WITH No. 1 AUTOMATIC SHUTTER

| | |
|---|----------|
| No. 3 Model 6 with No. 4 Tessar lens, Series II-b, . . . | \$ 52.80 |
| No. 3 Model 6 with No. 2 Zeiss Kodak Anastigmat lens, . . | 40.30 |
| No. 3-A Model 4 with No. 5 Tessar lens, Series II-b, . . . | 56.50 |
| No. 3-A Model 4 with No. 3 Zeiss Kodak Anastigmat lens, . . | 47.50 |
| No. 4 Model 3 with No. 5 Tessar lens, Series II-b, . . . | 56.50 |
| No. 4 Model 3 with No. 3 Zeiss Kodak Anastigmat lens, . . | 47.50 |
| No. 4 Model 4 with No. 7 Zeiss Protar lens, Series VII-a, . | 91.50 |

FOLDING HAWK-EYES FITTED WITH STEREO AUTOMATIC SHUTTER

| | |
|--|----------|
| Stereo Model 4 with No. 3 Tessar lenses, Series II-b, . . . | \$ 94.55 |
| Stereo Model 4 with No. 4 Tessar lenses, Series II-b, . . . | 98.55 |
| Stereo Model 4 with No. 1 Zeiss Kodak Anastigmat lenses, . . | 72.55 |
| Stereo Model 4 with No. 2 Zeiss Kodak Anastigmat lenses, . . | 73.55 |

HAWK-EYE ACCESSORIES

HAWK-EYE TRIPODS

IN SPRUCE, MAPLE AND EBONY

THESE tripods are finely finished, compact and perfectly rigid, combining the advantages of both the folding and telescopic style of tripod. The top is so made that the legs, when adjusted, are practically locked, avoiding any possibility of their becoming detached by accident after the tripod is placed and ready for use.

The Spruce tripod is very light and compact, yet rigid when in use; is fitted with metal head made in one piece which avoids all possibility of being easily broken. The trimmings are of lacquered brass.

The Maple tripod is beautifully finished in natural color. In construction, it is similar to the Spruce tripod, except that the wood parts are of maple with trimmings of lacquered brass. It is furnished with metal or wood head as desired.

The Ebony tripod is made of maple, finished dead-black to represent ebony. The trimmings being nickel produce a contrast which is very handsome. This tripod is absolutely rigid, quickly set up and readily adjusted for height. The

beautiful finish makes it very desirable for use with high-grade outfits.

When extended, these tripods measure 56 inches; when folded, 21 inches.

Weight of the Spruce tripod is 20 ounces, of the Maple or Ebony 30 ounces. They are adapted for any camera up to and including 5 x 7 in size.

Price of Spruce \$1.60, Maple \$1.70, Ebony \$2.00.

WENO TRIPOD

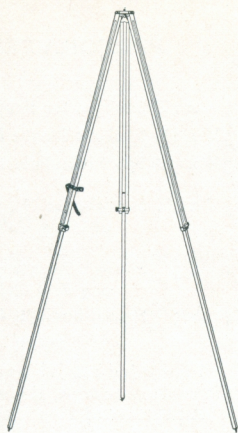
THIS tripod is designed for use with small cameras. The top is attached to the legs in such a manner that it is not necessary to remove when folding, which is an advantage, as the tripod is always ready for use.

The wood used is straight grain spruce, with shellac finish, the trimmings of lacquered brass.

The weight complete, with head and screw, is but 17 ounces.

The length when extended can be made to vary from 34 to 54 inches. The length when folded is but 29½ inches.

Price \$.90



CARRYING CASES

Made of Black Sole Leather, including shoulder strap, and first-class in every way.

| | |
|--|--------|
| No. 2 Weno Hawk-Eye, | \$1.25 |
| No. 4 Weno Hawk Eye, | 1.50 |
| No. 4 Weno Hawk-Eye, Model No. 2, | 1.50 |
| No. 5 Weno Hawk-Eye, | 1.50 |
| No. 7 Weno Hawk-Eye, | 1.50 |
| No. 1 A Folding Hawk-Eye, Model No. 1, | 1.25 |
| No. 3 Folding Hawk-Eye, Models Nos. 3, 4, 5 and 6, | 1.25 |
| No. 3-A Folding Hawk-Eye, Models Nos. 1 and 2, | 1.50 |
| No. 4 Folding Hawk-Eye, Model No. 3, | 1.50 |
| No. 4 Folding Hawk-Eye, Model No. 4, | 1.75 |
| Stereo Hawk-Eye, Models Nos. 1, 2, 3 and 4, | 1.50 |

Prices given on application for old style and special cases.

CARBON BLACK AND SCOTCH GRAY CARD MOUNTS

We do not carry a complete assortment of card stock, selecting only what we think most desirable for the amateur's use.

| | PER 50 | PER 100 | | PER 50 | PER 100 |
|----------------|--------|---------|----------------|--------|---------|
| 2½ x 4¼, . . . | \$.40 | \$.80 | 3¼ x 5½, . . . | \$.45 | \$.90 |
| 3½ x 3½, . . . | .40 | .80 | 4 x 5, . . . | .45 | .90 |
| 3¼ x 4¼, . . . | .45 | .85 | Stereo, . . . | .50 | 1.00 |

F I L M

PERFORATED DAYLIGHT LOADING FILM

| | 6 Ex. | 12 Ex. |
|---|--------|--------|
| 2 x 2½ Sunlight for Baby Hawk-Eye, | \$.30 | \$.40 |
| 3½ x 3½ Sunlight for the Hawk-Eye Jr., | .30 | .60 |
| 3½ x 3½ Special Sunlight for Weno or Tourist Hawk-Eye (small flange spool) | .30 | .60 |
| 3¼ x 4¼ Sunlight for No. 3 Folding, No. 3 Focusing Hawk-Eye or No. 3 Combination Hawk-Eye, | .35 | .70 |
| (small flange spool) | | |
| 4 x 5 Sunlight for 4 x 5 Hawk-Eye Jr. or '96 Model Mahog- any Roll Holder, | .45 | .90 |
| 4 x 5 Special Sunlight for No. 4 Weno, No. 4 Folding, No. 4 Focusing or Tourist Hawk Eye, | .45 | .90 |

In ordering film, always state the style of Hawk-Eye for which it is intended.
If in doubt as to style, give exact description of camera with measurements.

All Perforated Film is especially prepared for use in the Kodak Film Tank.

BLAIR NON-CURLING CARTRIDGE FILM

| | 6 Ex. | 12 Ex. |
|---|--------|---------------|
| 2¼ x 2¼ for No. 1 Brownie, | \$.15 | \$.20 |
| 2¼ x 3¼ for No. 2 Brownie, No. 2 Folding Pocket Brownie, | .20 | |
| 3¼ x 4¼ for No. 3 Brownie, No. 3 Folding Brownie, No. 3 Bulls- Eye Kodak, | .35 | .70 |
| 2½ x 4¼ for No. 1-A Folding Hawk-Eye Pocket Kodak, Pocket Kodak Special, No. 2-A Brownie, | .25 | .50 |
| *3¼ x 4¼ for 3 Weno Hawk-Eye, Stereo Hawk-Eye, Models Nos. 1 and 2, No. 3 Combination Hawk-Eye, or No. 3 Focusing Hawk-Eye, No. 3 Folding Hawk-Eye, Kodak or Buck-Eye, | .35 | .70 |
| *3½ x 3½ for Hawk-Eye, Bulls-Eye, Bullet or Buck-Eye, | .30 | .60 |
| 4 x 5 for Hawk-Eye, Bulls-Eye, Bullet or Buck-Eye, | .45 | .90 |
| 4 x 5 for No. 4 Folding Hawk-Eye, Models 3 and 4, No. 4 Screen Focus Kodak, | .45 | .90 |
| 4¼ x 3¼ for No. 3 Cartridge Kodak, | .35 | .70 |
| 5 x 4 for No. 4 Cartridge Kodak, | .45 | .90 |
| 7 x 5 for No. 5 Cartridge Kodak, | .80 | |
| 3¼ x 5½ for No. 7 Weno, No. 3-A Folding Hawk-Eye, and Pocket Kodak, | .40 | 10 Ex. .70 |
| 3¼ x 5½ for No. 3-B Folding Hawk-Eye, No. 6 Weno Hawk-Eye, Stereo Brownie, No. 3-B Quick-Focus Kodak, | .40 | .70 |

—*3¼ x 4¼ and 3½ x 3½—6 exposure lengths supplied on regular size spools.
Small flange spool supplied when specified.

NOTE—When ordering film, state whether you desire the Blair Non-Curling,
(numbers on back), or Perforated; if the latter, specify Sunlight or Special Sunlight.

VELOX

An ideal amateur paper. Prints and develops quickly by artificial light.

| | | Dozen | Gross |
|----------|-----------|--------|--------|
| 3½ x 3½, | | \$.15 | \$1.50 |
| 3¼ x 5½, | | .15 | 1.50 |
| 4 x 5, | | .25 | 2.00 |

AZO

| Die cut for Stereo prints, | 2 Dozen | Gross |
|----------------------------|---------|--------|
| | \$.25 | \$1.10 |

SOLIO PRINTING-OUT PAPER

Brilliant high lights, silky half-tones, rich, transparent shadows.

| | 2 Dozen | Gross |
|----------|---------|--------|
| 3½ x 3½, | \$.20 | \$1.15 |
| 3¼ x 4¼, | .20 | 1.15 |
| 3¼ x 5½, | .25 | 1.25 |
| 4 x 5, | .25 | 1.25 |

BLUE PRINT PAPER

Quickly printed and easily handled. This paper possesses peculiar and characteristic properties found in no other brand.

| | | | |
|----------|-----------|------------------------------|--------|
| 3½ x 3½, | | 2 dozen sheets, per package, | \$.16 |
| 3¼ x 4¼, | | 2 " " " " | .16 |
| 3¼ x 5½, | | 2 " " " " | .20 |
| 4 x 5, | | 2 " " " " | .20 |

EASTMAN AND STANDARD DRY PLATES

Extra rapid for instantaneous work.

| | Dozen |
|-------------------|------------------|
| 3¼ x 3¼, | \$.40 |
| 3½ x 3½, | .40 |
| 3¼ x 4¼, | .45 |
| 3¼ x 5½, | .65 |
| 3¼ x 6½ (Stereo), | 3 dozen for 2.70 |
| 4 x 5, | .65 |

HAWK-EYE DEVELOPING TRAYS

These trays are light in weight, tough and strong, and are not affected by the action of chemicals; are easily kept clean, have ridges on the bottom, and we recommend them for amateurs' use.

| | | |
|----------|-----------|--------|
| 3¼ x 4¼, | | \$.12 |
| 4 x 5, | | .15 |
| 5 x 7, | | .25 |

PRINTING FRAMES

| | | |
|---------|-----------|--------|
| 4 x 5, | | \$.25 |
| 5 x 7, | | .35 |
| Stereo, | | 1.50 |

PLATE HOLDERS

In ordering plate holders, it is always best to mention the camera in which they are to be used, or give outside measurements with slides withdrawn, so as to avoid the possibility of delay or error.

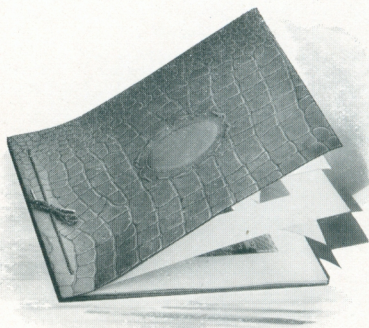
All holders are made of selected cherry, and the slides can be furnished either of waterproof cardboard or hard rubber.

| Used in Cameras Listed in Catalogue | | | Used in Obsolete Cameras | | |
|-------------------------------------|--------|--------------------|------------------------------------|-------------------|--------------------|
| SIZE | STYLE | With Rubber Slides | SIZE | With Board Slides | With Rubber Slides |
| $3\frac{1}{4} \times 4\frac{1}{4}$ | Single | \$.50 | $3\frac{1}{4} \times 3\frac{1}{4}$ | \$.80 | \$1.00 |
| $3\frac{1}{4} \times 5\frac{1}{2}$ | Double | 1.00 | 4 x 5 | 1.00 | 1.20 |
| $3\frac{1}{4} \times 6\frac{1}{2}$ | Stereo | 1.00 | 5 x 7 | 1.50 | 1.80 |
| 4 x 5 | Single | .75 | $6\frac{1}{2} \times 8\frac{1}{2}$ | 2.00 | 2.50 |
| | | | 8 x 10 | 2.35 | 2.95 |

SLIDES FOR HOLDERS

| SIZE | BOARD | Polished Hard Rubber | SIZE | BOARD | Polished Hard Rubber |
|------------------------------------|--------|----------------------|------------------------------------|--------|----------------------|
| $3\frac{1}{4} \times 3\frac{1}{4}$ | \$.10 | \$.20 | 4 x 5 | \$.15 | \$.25 |
| $3\frac{1}{4} \times 4\frac{1}{4}$ | .10 | .20 | 5 x 7 | .20 | .35 |
| $3\frac{1}{4} \times 5\frac{1}{2}$ | .15 | .25 | $6\frac{1}{2} \times 8\frac{1}{2}$ | .25 | .50 |
| $3\frac{1}{4} \times 6\frac{1}{2}$ | .15 | .25 | 8 x 10 | .35 | .65 |

HAWK-EYE ALBUM



The new Hawk-Eye Album is on the loose leaf system with covers of fine alligator leather finish material. Tied with silk lacing. Panel in cover for lettering. Leaves of heavy stock, antique finish. Ribbed tissue paper bound between each leaf.

Made for both black and white, and sepia toned prints and for all sizes up to and including 5 x 7.

Extra leaves and tissues may be inserted when desired.

| | |
|--|--------|
| No. 1, Black leaves; No. 2, White leaves; No. 3, Sepia leaves, $5\frac{1}{2} \times 7$, | \$.20 |
| Extra leaves, either color, complete with tissue, package of 5, | .07 |
| No. 4, Black leaves; No. 5, White leaves; No. 6, Sepia leaves, 7×10 , . | .30 |
| Extra leaves, either color, complete with tissues, package of 5, | .10 |

CHEMICALS

| | |
|---|--------|
| Solio Toning Solution, 8 oz. bottle, | \$.50 |
| Solio Hardener, 8 oz. bottle, | .35 |
| Hub Developing Powders for films, per dozen packages, | .50 |
| M. Q. N. A. developing tubes, box 5 tubes, | .75 |
| Acid-Hypo, for Films or Velox, per pound, | .25 |

DEVELOPING AND PRINTING

| SIZE | Developing, Printing and Mounting—12 exposures | Developing Only | Printing and Mounting | Developing Printing and Mounting |
|-----------|--|-----------------|-----------------------|----------------------------------|
| 2 ½ x 4 ¼ | \$1.50 | \$.06 | \$.08 | \$.12 ½ |
| 3 ½ x 3 ½ | 1.50 | .06 | .08 | .12 ½ |
| 3 ¼ x 4 ¼ | 1.50 | .06 | .08 | .12 ½ |
| 3 ¼ x 5 ½ | 1.50—(10 ex.) | .08 | .10 | .15 |
| 4 x 5 | 1.80 | .08 | .10 | .15 |
| 5 x 7 | 1.20—(6 ex.) | .08 | .12 ½ | .20 |
| Stereo | 2.40 | .10 | .15 | .20 |

OUTFITS FOR DEVELOPING AND PRINTING

To save time and trouble in selecting the articles needed for developing and printing, we furnish outfits including everything necessary at far below the cost if furnished separately.

3 ½ x 3 ½ FOR FILM OR PLATES

| | |
|---|--------|
| 1 Candle Lamp, | \$.25 |
| 4 Developing Trays, | .40 |
| 1 4-oz. Graduate, | .10 |
| 1 3 ½ x 3 ½ Printing Frame, | .25 |
| 1 3 ½ x 3 ½ Glass, | .05 |
| 1 Stirring Rod, | .05 |
| ¼ doz. Developing Powders, | .15 |
| ¼ lb. Kodak Acid Fixing Powder, | .10 |
| 1 dozen Sheets Velox Paper, | .15 |
| 1 Bottle Nepera Developer, | .10 |
| 1 Package Bromide of Potassium, | .10 |
| Directions, | .10 |

Price, complete, \$1.25

\$1.80

4 x 5 FOR FILM OR PLATES

| | |
|---|--------|
| 1 Candle Lamp, | \$.25 |
| 1 4 x 5 Printing Frame, | .25 |
| 1 4 x 5 Glass, | .05 |
| 1 4-oz. Graduate, | .10 |
| 1 Stirring Rod, | .05 |
| 4 4 ½ x 5 ½ Developing Trays, | .40 |
| 5 Tubes Developer, | .25 |
| ½ lb. Kodak Acid Fixing Powder, | .15 |
| ½ oz. Bromide Potassium, | .10 |
| 2 dozen 4 x 5 Velox Paper, | .50 |
| 2 ozs. Nepera Developer, | .15 |
| Directions, | .10 |

Price, complete, \$1.50

\$2.35

TERMS

THE prices are net except to dealers. Remittances should be made by draft on New York, express order, postal order, or registered mail. Amounts less than one dollar may be remitted in stamps. We do not accept personal checks.

Parties unknown to us desiring shipment C. O. D. must remit one-third the estimated amount of invoice with the order.

Small parcels which do not contain glass in any form can be sent by mail at risk of the purchaser. We do not pay postage—remit when ordering.

All our goods are packed carefully, and we cannot be held responsible for any damage after the package leaves our hands.

No charge is made for packing, and prices are f. o. b. Rochester.

BLAIR CAMERA DIVISION,

EASTMAN KODAK COMPANY.

Rochester, New York, U. S. A.



THE CAMERA SHOP

Eastman KODAK Agency
KODAKS, ALBUMS and SUPPLIES
Printing, Developing, Enlarging
553 S. SPRING ST. LOS ANGELES