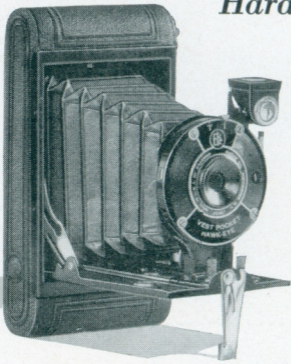




# HAWK-EYE CAMERAS

*Made by Eastman Kodak Company*

*Hardly a handful*



Vest Pocket  
Hawk-Eye

*Pictures*  
1 $\frac{5}{8}$  x 2 $\frac{1}{2}$  inches

IT'S really true! This camera is "hardly a handful"—yet it makes sparkling, clear-cut pictures, in the ever popular "vest pocket" size—1 $\frac{5}{8}$  x 2 $\frac{1}{2}$  inches. It actually fits into any pocket, into the vacation grip or the hand-bag, yet it is as dependable a picture-maker as you could want—always ready in a wink for the chance snapshot—always sure to get a good one if you will give it half a chance. The pictures are so good, in fact, that you can have them enlarged.

All this means, of course, that the Vest Pocket Hawk-Eye is both simply and scientifically constructed. The focus is "fixed"—draw out the bellows and you are ready to make the picture. The shutter gives a choice of either instantaneous or time exposures. The brilliant finder, reversible for horizontal or vertical views, makes it easy to sight the subject. A tripod socket and easy daylight loading are other conveniences.

*In spite of its  
small size the  
Vest Pocket  
Hawk-Eye  
easily makes  
pictures like  
this and the  
one below.*



The Vest Pocket Hawk-Eye is available with either a single or a double lens.

Vest Pocket Hawk-Eye with Single lens	\$ 5.00
With Double lens .....	7.50
Carrying Case .....	1.25
Kodak Portrait Attachment .....	.75
Kodak N. C. Film No. 127 (8 exposures)	.25



## No. 2 Folding Cartridge

**I**F YOU want a camera that makes bigger pictures than vest pocket size but that is small enough to be taken *anywhere* with convenience, see this neat Hawk-Eye.

The pictures it makes are  $2\frac{1}{4} \times 3\frac{1}{4}$  inches—one of the most popular sizes. No. 2 will give you an endless supply of good pictures for your album—and good enlargements that will be a source of pleasure for both you and your friends.



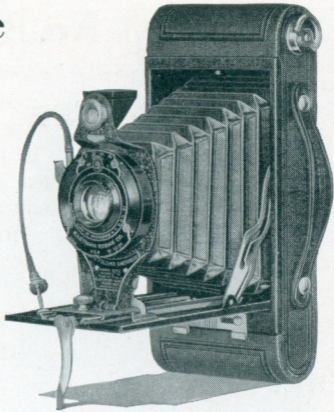
*Made with No. 2 Folding Hawk-Eye, actual size*

# Hawk-Eye

## Model B

### Pictures

2¼ x 3¼ inches

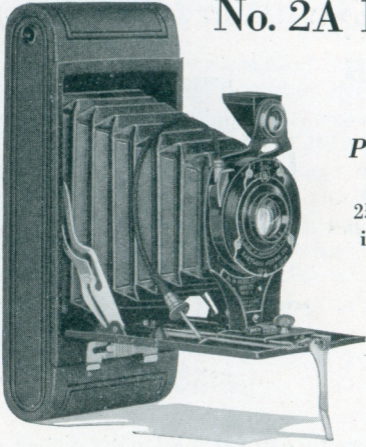


THIS camera can be had with either a single or a double lens, both Eastman-made. The shutter is the dependable Kodex. It provides for *bulb* and *time* exposures and for snapshot speeds of 1/25 and 1/50 second. A simple scale on the bed of the camera aids accurate focusing.

The brilliant finder can be quickly set for horizontal or vertical pictures. Two tripod sockets, finger and cable release—these are other details of this complete little picture-maker. The finish—black imitation leather—is set off by nickel and black lacquer trimmings. You can be proud of the appearance of this camera as well as of the pictures it will make for you.

No. 2 Folding Cartridge Hawk-Eye, Model B, with Single lens	\$ 8.00
With Double lens . . . . .	10.00
Carrying Case . . . . .	1.50
Kodak Portrait Attachment . . . .	.75
Kodak N. C. Film No. 120 (6 exposures) . . . . .	.25

## No. 2A Folding



*Picture  
size  
2½ x 4¼  
inches*

**H**ERE is a camera that is small enough to be pocket-fitting, inexpensive enough for almost any purse—yet complete and proficient in every respect.

There is a handy scale which gives adjustments for various distances. But the lens can also be set so that the camera may be used as a *fixed-focus* outfit. The manual of directions tells how.

And this is only one instance of the camera's versatility. The brilliant finder can be set for either horizontal or vertical views. The Kodex shutter, with snapshot speeds of  $1/25$  and  $1/50$  second, besides *bulb* and *time*, makes possible a variety of exposures to fit light conditions. The lens may be either the single or double type, depending upon your selection.

There are many other points that will make you glad to own this Eastman model. But see it and decide for yourself.

# Cartridge Hawk-Eye, *Model B*

No. 2A Folding Cartridge Hawk-Eye, <i>Model B</i> , with Single lens .....	\$ 9.00
With Double lens .....	11.00
Carrying Case.....	1.60
Kodak Portrait Attachment.....	.75
Kodak N. C. Film No. 116 (6 exposures) ....	.30



*Made with No. 2A Folding Hawk-Eye, actual size*

# No. 3A Folding Cartridge

THE familiar postcard size ( $3\frac{1}{4}$  x  $5\frac{1}{2}$  inches) has long been popular with amateur photographers. Here is a moderately



*Made with No. 3A Folding Hawk-Eye, reduced in size*

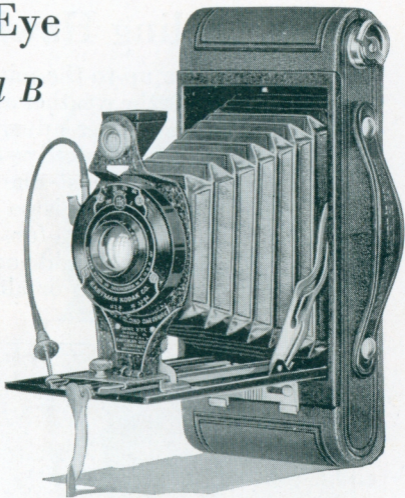


# Hawk-Eye

## Model B

### Pictures

$3\frac{1}{4} \times 5\frac{1}{2}$   
inches



priced camera that will make good pictures for you in these pleasing proportions.

No. 3A gives you a choice of a single or a double lens. Kodex shutter provides *bulb* and *time* exposures as well as snapshot speeds of  $1/25$  and  $1/50$  second. Exposures are made with a lever or with the cable release. Focusing is done according to an accurate scale aided by a focusing lock. The finder is of the new, brilliant variety. No. 3A is a fully equipped camera, and it's handsomely finished as well.

Be sure to see this camera. It's a winner.

No. 3A Folding Cartridge Hawk-Eye, <i>Model B</i> , with Single lens	\$13.50
With Double lens . . . . .	16.00
Carrying Case . . . . .	1.80
Kodak Portrait Attachment . . . .	.75
Kodak N. C. Film No. 122 (6 exposures) . . . . .	.55

## No. 2 Folding Hawk-Eye

Do you want an up-to-the-minute camera that defies the weather and makes good pictures even under adverse conditions? Then see this *Hawk-Eye Special*.

The super-speed lens—the famous Kodak Anastigmat  $f.6.3$ —is so fast that you don't have to wait for sunlight. Whether the day is bright or cloudy, whether it's early morning or almost sun-

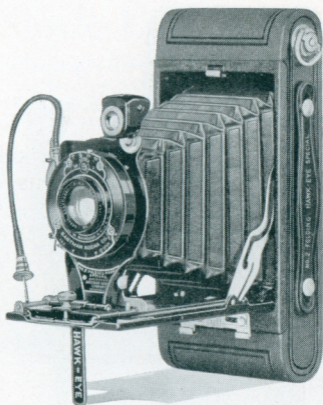


*Made with No. 2 Folding Hawk-Eye Special,  
actual size*

# Special

## Picture Size

2¼ x 3¼  
inches



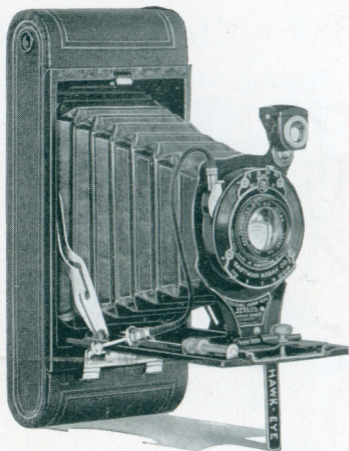
down, the speed of this lens gets the picture.

Paired with the Kodak Anastigmat is the carefully constructed Kodex shutter. It gives you a choice of snapshot speeds besides the usual *bulb* and *time* actions for longer exposures. A worm screw at your finger tips makes focusing unusually quick and easy. In short, this camera has fittings of a caliber to correspond with its chief feature—the lens.

And the finish reflects quality, as well. Trim, black, imitation leather covers the body. Gleaming black enamel and brilliant nickel set off the appearance of the camera, whether it's open or closed. But you can appreciate its good looks only by seeing it—and you can appreciate its capability only by using it.

No. 2 Folding Hawk-Eye <i>Special</i> . . . . .	\$16.00
Levant Grain Leather Case, with strap . . . . .	2.50
Kodak Portrait Attachment . . . . .	.75
Kodak N. C. Film No. 120 (6 exposures) . . . . .	.25

No. 2A



*Picture  
Size*

2½ x 4¼  
inches

THE lens on this new model admits so much light that you don't have to limit your picture-making to sunny mornings or afternoons. Use it whether the day is bright or cloudy—and if there's a picture in sight this Hawk-Eye will get it.

Of course there are other features than the Kodak Anastigmat lens *f*.6.3 that make No. 2A *Special* the unusual camera it is. The Kodex shutter gives plenty of choice in timing the picture: it has the necessary snapshot speeds, besides *bulb* and *time* adjustments. The worm-screw device and brilliant finder make focusing extremely easy. And the entire front of the camera can be removed for loading.

See this camera. Examine its smart finish and fine fittings. Then you will wonder how, especially with its lightning-like lens, it can possibly be sold at so low a price.

# Folding Hawk-Eye Special

No. 2A Folding Hawk-Eye Special.....	\$17.00
Levant Grain Leather Case, with strap...	3.00
Kodak Portrait Attachment.....	.75
Kodak N. C. Film No. 116 (6 exposures)..	.30



*Made with No. 2A Folding Hawk-Eye Special,  
actual size*

## 3A Folding Hawk-Eye

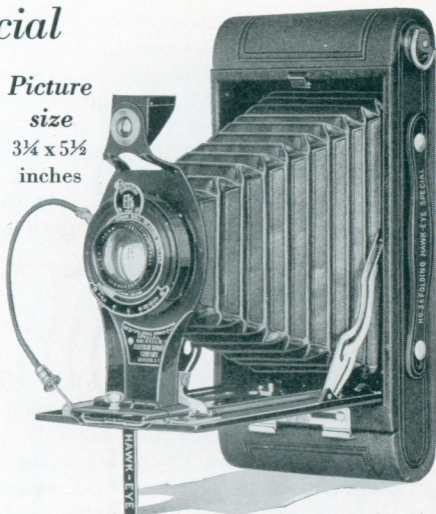
**H**ERE is hitherto unheard of value—a postcard size camera, equipped with the Kodak Anastigmat  $f.6.3$  lens, at a



*Made with No. 3A Folding Hawk-Eye Special,  
reduced in size*

# Special

Picture  
size  
3¼ x 5½  
inches



surprisingly low price. The extra fast lens makes light of poor weather—it makes good 3¼ x 5½ inch pictures even under adverse conditions—yet No. 3A *Special* sells for little more than twenty dollars.

And the lens is not the only fine feature. The Kodak Ball Bearing Shutter clips fractions of seconds precisely on snapshots and also affords *time* and *bulb* actions. Focusing by means of the worm screw is practically instantaneous. The brilliant finder gives a beautiful, detailed image of the subject.

You will be glad to own such a capable and handsome instrument.

No. 3A Folding Hawk-Eye <i>Special</i> . . .	\$22.00
Levant Grain Leather Case, with strap	3.75
Kodak Portrait Attachment . . . . .	.75
Kodak N. C. Film No. 122 (6 exposures) . . . . .	.55

No. 2



*Picture  
size*  
2¼ x 3¼  
inches

**H**ERE is an especially good looking box-type camera with which anyone can easily make good pictures.

Simplicity is the keynote of its construction. Set the camera for a snapshot or time exposure, point it at the subject and press the lever—that's all. There is no focusing required.

But in spite of its simple operation this *Special Hawk-Eye* is carefully constructed and has features that make it a strictly *de luxe* model. Two finders of the brilliant type—an advanced feature—make it possible instantly to get a clear-cut image of the picture you are taking. Another special item is the covering of the camera—fine Morocco grain imitation leather, embossed in a handsome design. The metal fittings are trimmed in nickel. Equipment includes an automatic shutter and a lens carefully tested and accurately fitted. The handle is of genuine leather.

The No. 2 *Hawk-Eye Special* is made to permit easy loading. In fact, the construction of the whole camera is such that



# Hawk-Eye *Special*

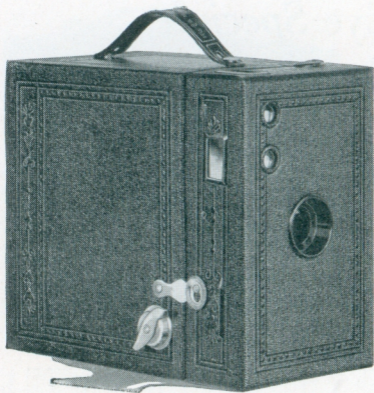
you can depend upon it for a maximum of picture-making fun, and a complete absence of bothersome adjustments. Whether you are using it on vacation, over the week-end, or every day around home, you will be proud of the pictures it makes and the appearance it presents.

No. 2 Hawk-Eye <i>Special</i> . . . . .	\$ 2.25
Kodak Portrait Attachment . . . . .	.50
Kodak N. C. Film No. 120 (6 exposures) . . . . .	.25



*Made with No. 2 Hawk-Eye Special, actual size*

# No. 2A



*Picture  
size*  
2½ x 4¼  
inches

**E**ASY operation, good pictures in a pleasing size, and outstandingly handsome appearance are some of the things that make this new Hawk-Eye a big favorite.

The covering of the camera is an embossed, black, imitation leather. Together with the gleaming nickel fittings it makes No. 2A a decidedly attractive camera. Besides it's light, durable and compact.

But it's good pictures you want—and this Hawk-Eye *Special* makes them easily. You load in daylight with Kodak Film. With either of the brilliant finders you can sight instantly on your subject. Then press the release and the picture is yours. Whether it's a snapshot or a time exposure, a horizontal or a vertical view, you can count on this camera for satisfactory results. The automatic shutter and tested lens take care of that. And, you can make your pictures at small cost. The price of the camera proves it.

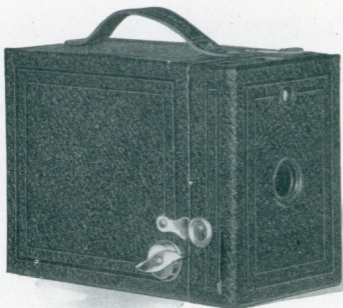
# Hawk-Eye *Special*

No. 2A Hawk-Eye <i>Special</i> .....	\$ 3.25
Kodak Portrait Attachment ...	.75
Kodak N. C. Film No. 116 (6 exposures) .....	.30



*Made with No. 2A Hawk-Eye Special, actual size*

No. 2



*Picture  
Size*  
2¼ x 3¼  
inches

**I**F YOU want to make pictures in the simplest way possible, with a capable camera that costs only a trifle, one of these little box models is just the thing. Hundreds of thousands of people, both youngsters and adults, have bought them and are turning out pictures that will give pleasure for many years.

Load with Kodak Film, point the camera, press the release—and the picture's made. It couldn't be simpler.

The picture size is 2¼ x 3¼ inches and, provided the light is bright, results are likely to be so good that you can have enlargements several times the original dimensions if you wish. Here is picture fun galore, with an expenditure that is truly negligible.

Model C has a simple but accurate shutter, a tested lens and an easily used ground-glass finder. The body is covered with long-lasting imitation leather. A strong handle of genuine leather makes for easy carrying. Winding key, catchlocks and lever are finished in nickel.

# Cartridge Hawk-Eye

## *Model C*

Below is a snapshot made with this least expensive of all Eastman models. It's a good picture—but no better than you yourself can make with this camera, the biggest seller in camera history.

No. 2 Cartridge Hawk-Eye, <i>Model C</i>	\$ 1.25
Kodak Portrait Attachment .....	.50
Kodak N. C. Film No. 120	
(6 exposures) .....	.25



*Made with No. 2 Hawk-Eye Model C, actual size*

## *Important!*

ANY one of the cameras shown in this booklet will bring to the user a free subscription to the monthly magazine *Kodakery*. You get not only a camera made by the world's greatest photographic manufacturers but also a finely printed, profusely illustrated periodical published purposely to aid amateurs in making the most of their cameras. It is interesting and instructive to young and old alike. It will double the fun you'll have with your Hawk-Eye camera.

On the first page of the instruction book which accompanies your camera you will find a subscription blank. Fill it out at once and mail it in.

### *Load with Kodak Film*

*The dependable film in the familiar yellow box*

LISTED with each camera in this booklet are the number and price of the non-curling Kodak Film cartridge which fits it. Always specify this number in purchasing film and insist on getting the familiar yellow box, plainly marked as a product of the Eastman Kodak Company. In this way you can be assured of best results, because Kodak Film always maintains its superior quality. For forty years it has been synonymous with the best in picture making. Insist on the dependable yellow-box kind.

# Kodak Film Packs

As stated on the opposite page, all of the cameras shown in this booklet are of the roll film variety and use regular Kodak Film in the yellow box, obtainable anywhere. The proper size is listed under each camera.

For Film Pack cameras and cameras equipped for Film Pack Adapters use Kodak Film Packs. They are coated with the same sensitized emulsion as Kodak Film and have the same dependable qualities as the roll film in the familiar yellow carton. To make them easily identifiable they also are packed in yellow boxes.

Below are given the numbers, sizes and prices of Kodak Film Packs.

## 12 Exposures Only

	Inches	Centimeters	Per Pack
No. 500	$1\frac{3}{4} \times 2\frac{3}{8}$	$4\frac{1}{2} \times 6$	\$ .35
No. 540	$1\frac{3}{4} \times 4\frac{1}{4}$	$4\frac{5}{10} \times 10\frac{7}{10}$	.55
No. 520	$2\frac{1}{4} \times 3\frac{1}{4}$	$6 \times 9$	.50
No. 516	$2\frac{1}{2} \times 4\frac{1}{4}$	$6\frac{1}{2} \times 11$	.60
No. 531	$2\frac{3}{32} \times 5\frac{1}{32}$	$6 \times 13$	.90
No. 518	$3\frac{1}{4} \times 4\frac{1}{4}$	$8 \times 10\frac{1}{2}$	.90
No. 542	$3 \times 5\frac{1}{4}$	$7\frac{1}{2} \times 13\frac{1}{2}$	1.00
No. 522	$3\frac{1}{4} \times 5\frac{1}{2}$	$8 \times 14$	1.10
No. 543	$3\frac{3}{4} \times 5\frac{1}{2}$	$10 \times 15$	1.35
No. 523	$4 \times 5$	$10 \times 12\frac{1}{2}$	1.10
No. 526	$4\frac{3}{4} \times 6\frac{1}{2}$	$12 \times 16\frac{1}{2}$	1.75
No. 515	$5 \times 7$	$13 \times 18$	1.90
No. 541	$3\frac{1}{2} \times 4\frac{3}{4}$	$9 \times 12$	1.00

EASTMAN KODAK COMPANY

ROCHESTER, N. Y.

