

# KODAK



## *Take a Kodak With You*

WHETHER you're stepping off the boat at Bar Harbor or the porch on your own "home grounds," you'll immediately find scenes that call for your Kodak. Any scene you enjoy seeing you'll enjoy remembering and a Kodak won't let you forget.

A day at the beach, a week in the woods, a month at the mountains; the folks you meet, the friends you make—every one deserves a place in the Kodak story.

Any Kodak is compact to carry, easy to operate and makes good pictures. And the autographic feature, exclusively Eastman, allows you to give each picture a date and title written on the film at the time of exposure. There is no extra charge for autographic film.

Whether you're interested in still pictures or motion pictures, you'll find in this little booklet the Kodak you want.

EASTMAN KODAK COMPANY  
Rochester, N. Y.

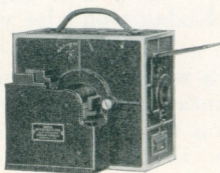
*June, 1924*



# Ciné-Kodak Makes Motion Pictures

And now *motion* pictures the Kodak way.

Press the Ciné-Kodak button, the motor cranks the camera, and you're



Ciné-Kodak

getting motion pictures of the children on the lawn, the vacation trip, or your favorite sports, with typical Kodak ease. Later, your Kodoscope pro-

jects the picture at your house and the fun you had is yours again.

In addition to personal pictures, professional releases shown in regular theatres may be rented through Kodoscope Libraries, Inc., and projected at home with your Kodoscope.

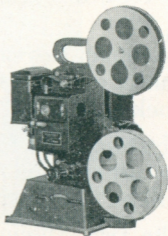
*Economy:* The operating expense of the Ciné-Kodak is less than 20 per cent of that of an outfit using standard width film. The development and reversal of Ciné-Kodak Film are done at the Eastman laboratories and the charge is included in the purchase price of the film. *You press the button; we do the rest.*

# Kodascope Projects Motion Pictures

## DESCRIPTIVE DETAILS

### Ciné-Kodak

SIZE: 8 x 4 $\frac{5}{8}$  x 8 $\frac{5}{8}$  inches.  
WEIGHT: 7 $\frac{1}{4}$  lbs. CAPACITY: 100 feet (4 minutes operation). LENS: Kodak Anastigmat *f.* 3.5. FINISH: Body of aluminum with Japan crystal finish. Top and rear finders.



Kodascope

### Kodascope

SIZE: 18 $\frac{1}{2}$  x 14 $\frac{7}{8}$  x 10 $\frac{3}{8}$  inches. WEIGHT: 18 $\frac{1}{2}$  lbs. CAPACITY: 400 feet (16 minutes projection). LENS: 50 mm. focus, projecting 30 x 40-inch picture at 18 feet. FINISH: Body of metal with Japan crystal finish. MISCELLANEOUS: Electrically driven on direct or alternating current from 105 to 125 volts.

## Prices

Ciné-Kodak . . . . .	\$125.00
Kodak Motor Drive Unit, with battery and Charging Outfit . . . . .	25.00
Kodascope and Splicer . . . . .	160.00
Tripod . . . . .	25.00
Screen . . . . .	25.00
Outfit as above, with <i>either</i> motor drive unit or hand crank and tripod . . . . .	335.00
Ciné-Kodak Film, 100-foot Rolls . . . . .	6.00
50-foot Rolls . . . . .	4.00
(Price includes finishing and return transportation)	
Duplicate Prints, 100-foot length . . . . .	6.00
50-foot length . . . . .	4.00
Leather Case for Kodak and Tripod Head . . . . .	18.00
Mahogany Case for Kodascope . . . . .	25.00
Leather Bound Canvas Case for Tripod Legs . . . . .	6.50
Unipod Cane . . . . .	5.00
Extra Battery for Motor Drive Unit . . . . .	8.00

*The prices of cameras and film include the Excise Tax*

# Vest Pocket Autographic KODAKS

## Regular and *Special* Models

Compact to wear, but complete with every photographic essential—that's the Vest Pocket Kodak.

The two fixed focus models are ready for pictures—good pictures—the moment you pull out the lens section.

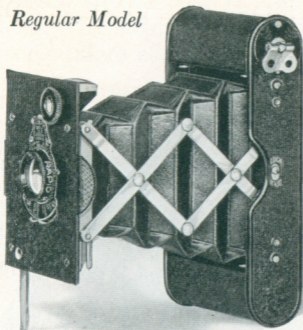
The two *Specials*, focusing models, have the famous Kodak Anastigmat lens, speeds *f.6.9* and *f.7.7*, respectively. This lens is set in a revolving mount that gives you with a short turn, accurate focus at distances ranging from 3 feet to 100. You get sharp, sparkling negatives with a new convenience.

### *Prices*

VEST POCKET AUTOGRAPHIC KODAK, Regular (fixed focus)	
With Meniscus Achromatic Lens . . . . .	\$ 6.50
With Rapid Rectilinear Lens . . . . .	8.00
VEST POCKET AUTOGRAPHIC KODAK, <i>Special</i> (focusing)	
With Kodak Anastigmat <i>f.6.9</i> lens . . . . .	15.00
With Kodak Anastigmat <i>f.7.7</i> lens . . . . .	13.00
Leather Case for Vest Pocket Kodak . . . . .	.90
Leather Case with Carrying Strap . . . . .	1.00
Belt Carrying Case (russet leather) . . . . .	1.25
Autographic Film Cartridge, 8 exposures (No. A 127)	.25
Vest Pocket Cable Release Attachment . . . . .	.50
Vest Pocket Kodak Tripod Adapter . . . . .	.50
Kodak Portrait Attachment for Meniscus Lens . . . . .	.50
Kodak Portrait Attachment for R. R. Lens . . . . .	.75
Kodak Self Timer (see page 32) . . . . .	1.25

*The prices of cameras and film include the Excise Tax*

*Regular Model*



## DESCRIPTIVE DETAILS

SIZE OF PICTURES:  $1\frac{5}{8} \times 2\frac{1}{2}$  inches.

SIZE OF KODAK:  $1 \times 2\frac{3}{8} \times 4\frac{3}{4}$  inches.

CAPACITY WITHOUT RELOADING: 8 exposures.

WEIGHT: 11 ounces.

FOCUS: Regular, fixed; *Special*, adjustable.

LENSES: Regular, with Meniscus Achromatic or Rapid Rectilinear; *Special*, with Kodak Anastigmat  $f.7.7$  or  $f.6.9$ ,  $3\frac{1}{2}$  inch focus.

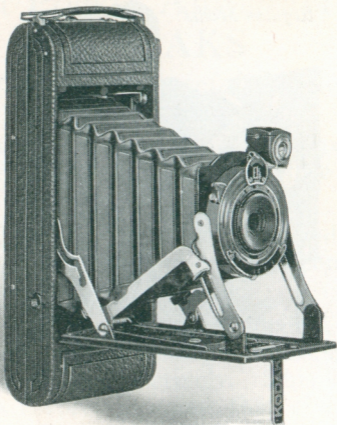
SHUTTER: Kodak Ball Bearing No. 0 with finger release only. (Cable release attachment sold separately.)

SPEEDS:  $1/25$ ,  $1/50$  second; time and bulb actions.

FINDER: Brilliant reversible.

FINISH: Metal parts in nickel and black enamel. Black bellows. Autographic. All metal body. Regular, with Japan crystal finish; *Special*, covered with Morocco grain leather.





Nos. 1 and 1<sup>A</sup>  
Pocket KODAKS, Series II  
*Fixed Focus Models*

You no sooner see the picture than it's yours with one of these Pocket Kodaks. As you open the camera, the lens automatically advances to picture taking position; and when the camera bed snaps into place you're ready to trip the shutter.

Combined with this ease of operation is a compactness for carrying that makes either of these Kodaks a companion worth while.

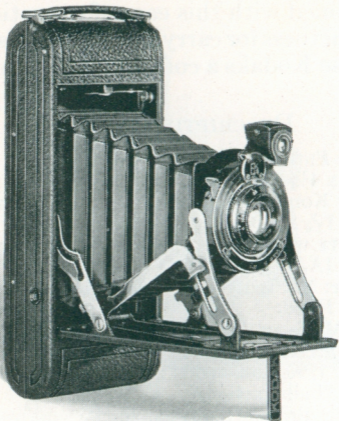
## DESCRIPTIVE DETAILS

- SIZE OF PICTURES: No. 1,  $2\frac{1}{4} \times 3\frac{1}{4}$  inches; No. 1A,  $2\frac{1}{2} \times 4\frac{1}{4}$  inches.
- SIZE OF KODAK: No. 1,  $1\frac{5}{16} \times 3\frac{1}{16} \times 6\frac{7}{16}$  inches; No. 1A,  $1\frac{9}{16} \times 3\frac{5}{16} \times 8$  inches.
- CAPACITY WITHOUT RELOADING: No. 1, 6 exposures; No. 1A, 12 exposures.
- WEIGHT: No. 1, 15 ounces; No. 1A, 23 ounces.
- FOCUS: Fixed.
- LENS: Meniscus Achromatic.
- SHUTTER: Kodak Ball Bearing with finger release.
- SPEEDS:  $1/25$ ,  $1/50$  and  $1/100$  second, as well as time and "bulb" actions.
- FINDER: Brilliant; reversible for horizontal or vertical pictures.
- BODY: Aluminum.
- COVERING: No. 1, Levant grain leather; No. 1A, fine seal-grain leather.
- FINISH: Metal parts in nickel and black enamel. Black bellows.
- MISCELLANEOUS: Autographic feature. Two tripod sockets.

## Prices

	No. 1	No. 1A
POCKET KODAK, SERIES II (fixed focus), with Meniscus Achromatic lens and Kodak Ball Bearing shutter . . . . .	\$13.50	\$15.00
Black Sole Leather Case, with strap . . . . .	2.50	3.00
Autographic Film Cartridge, 12 exposures (No. A 116) for No. 1A . . . . .		.60
Ditto, 6 exposures (No. A 120) for No. 1; (No. A 116) for No. 1A . . . . .	.25	.30
Kodak Portrait Attachment (see page 32) . . . . .	.75	.75
Kodak Self Timer (see page 32) . . . . .	1.25	1.25
Cable Release . . . . .	.35	.35

*The prices of cameras and film include the Excise Tax*



*Focusing Models*

Nos. 1 and 1<sup>A</sup>

**Pocket KODAKS, Series II**

The self-erecting front draws out the lens to picture taking position as you open the camera. The sharp-cutting Kodak Anastigmat  $f.7.7$  lens is set in a focusing mount so that you secure sharp focus from 5 to 100 feet simply by a short turn with the fingers.

This convenient simplicity makes good pictures easy to get.

## DESCRIPTIVE DETAILS

SIZE OF PICTURES: No. 1,  $2\frac{1}{4} \times 3\frac{1}{4}$  inches; No. 1A,  $2\frac{1}{2} \times 4\frac{1}{4}$  inches.

SIZE OF KODAK: No. 1,  $1\frac{5}{16} \times 3\frac{1}{16} \times 6\frac{7}{16}$  inches; No. 1A,  $1\frac{9}{16} \times 3\frac{5}{16} \times 8$  inches.

CAPACITY WITHOUT RELOADING: No. 1, 6 exposures; No. 1A, 12 exposures.

WEIGHT: No. 1,  $16\frac{1}{2}$  ounces; No. 1A, 26 ounces.

FOCUS: Adjustable.

LENS: Kodak Anastigmat, *f.7.7*—No. 1,  $4\frac{1}{4}$ -inch focus; No. 1A,  $5\frac{1}{4}$ -inch focus.

SHUTTER: Kodak Ball Bearing with finger release.

SPEEDS:  $1/25$ ,  $1/50$  and  $1/100$  second, as well as time and "bulb" actions.

FINDER: Brilliant; reversible for horizontal or vertical pictures.

BODY: Aluminum.

COVERING: No. 1, Levant grain leather; No. 1A, fine seal-grain leather.

FINISH: Metal parts in nickel and black enamel. Black bellows.

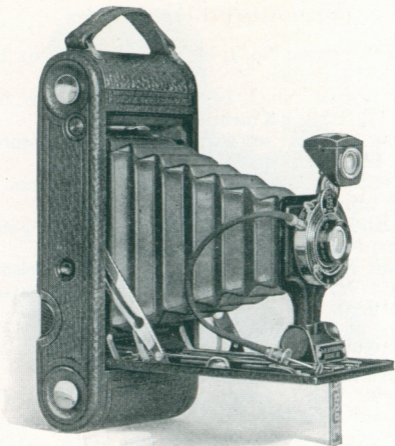
MISCELLANEOUS: Autographic feature. Two tripod sockets.

### *Prices*

	No. 1	No. 1A
POCKET KODAK, SERIES II (focusing model), with Kodak Anastigmat <i>f.7.7</i> lens and Kodak Ball Bearing shutter . . . . .	\$20.00	\$22.00
Black Sole Leather Case, with strap . . . . .	2.50	3.00
Autographic Film Cartridge, 12 exposures (No. A 116) for No. 1A . . . . .		.60
Ditto, 6 exposures (No. A 120) for No. 1; (No. A 116) for No. 1A . . . . .	.25	.30
Kodak Portrait Attachment (see page 32) . . . . .	.75	.75
Kodak Self Timer (see page 32) . . . . .	1.25	1.25
Cable Release . . . . .	.35	.35

*The prices of cameras and film include the Excise Tax*





## Nos. 1 and 1<sup>A</sup> Autographic KODAK Juniors

The Autographic Kodak, Junior, is a common sense camera for everyday use.

Its rugged construction assures a long life of continuous service; its simplicity of design makes it workable for any member of the family.

Both these Kodaks are planned to make good pictures without fuss or worry—and they do.

## DESCRIPTIVE DETAILS

**SIZE OF PICTURES:** No. 1,  $2\frac{1}{4} \times 3\frac{1}{4}$  inches; No. 1A,  $2\frac{1}{2} \times 4\frac{1}{4}$  inches; **SIZE OF KODAK:** No. 1,  $1\frac{7}{16} \times 3\frac{5}{8} \times 6\frac{5}{8}$  inches; No. 1A,  $1\frac{5}{8} \times 3\frac{3}{4} \times 8$  inches.

**CAPACITY:** No. 1, 6; No. 1A, 12 exposures.

**WEIGHT:** No. 1,  $21\frac{1}{2}$  ounces; No. 1A,  $27\frac{1}{2}$  ounces.

**FOCUS:** Fixed (with Meniscus Achromatic lens only); or Adjustable (with any listed lens).

**LENSES:** Meniscus Achromatic; Rapid Rectilinear, No. 1,  $4\frac{1}{4}$  inch focus; No. 1A,  $5\frac{1}{4}$ -inch focus. Kodak Anastigmat, *f.7.7*, No. 1,  $4\frac{1}{3}$ -inch focus; No. 1A,  $5\frac{1}{4}$ -inch focus.

**SHUTTER:** Kodak Ball Bearing or, for 1A with Anastigmat lens, multiple speed shutter.

**SPEEDS:** No. 1,  $1/25$  and  $1/50$  second or, with Anastigmat lens,  $1/25$ ,  $1/50$  and  $1/100$  second; No. 1A,  $1/25$ ,  $1/50$  and  $1/100$  second. Multiple speed shutter, with Kodak Anastigmat *f.7.7* lens on 1A only. Both with time and "bulb" actions.

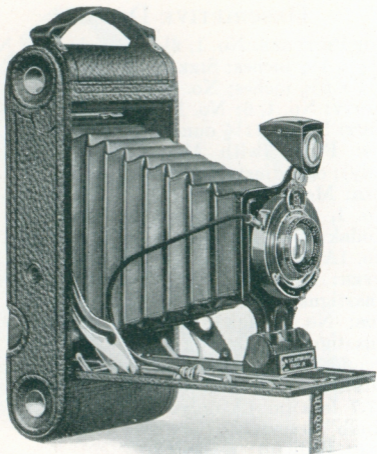
**FINDER:** Brilliant; reversible.

**FINISH:** Metal parts in nickel and black enamel. Body covered with seal-grain leather. Black bellows. Autographic feature. Two tripod sockets.

### Prices

AUTOGRAPHIC KODAK JUNIOR	No. 1	No. 1A
Fixed Focus with Meniscus Achromatic lens and Kodak Ball Bearing Shutter . . . . .	\$12.00	\$ 13.00
Focusing Model with Meniscus Achromatic lens and Kodak Ball Bearing Shutter . . . . .	12.00	13.00
With Rapid Rectilinear Lens . . . . .	14.00	15.00
With Kodak Anastigmat <i>f.7.7</i> lens . . . . .	19.00	20.00
With Kodak Anastigmat <i>f.7.7</i> lens and multiple speed shutter . . . . .		24.00
Black Sole Leather Case, with strap. . . . .	3.00	3.00
Autographic Film Cartridge, 12 exposures (No. A 116) for No. 1A . . . . .		.60
Ditto, 6 exposures (No. A 120) for No. 1; (No. A 116) for No. 1A . . . . .	.25	.30
Kodak Portrait Attachment (see page 32). . . . .	.75	.75
Kodak Self Timer (see page 32) . . . . .	1.25	1.25

*The prices of cameras and film include the Excise Tax*



## Nos. 2C and 3A Autographic KODAK Juniors

Pictures,  $2\frac{7}{8}$  x  $4\frac{7}{8}$ —an increasingly popular size — from the No. 2C; post card size from the No. 3A; they're just alike except for size.

Strongly built, carefully finished, finely equipped, moderately priced; there's increasing satisfaction in owning either of these highly practical photographic instruments.

## DESCRIPTIVE DETAILS

**SIZE OF PICTURES:** No. 2C,  $2\frac{7}{8} \times 4\frac{7}{8}$  inches; No. 3A,  $3\frac{1}{4} \times 5\frac{1}{2}$  inches.

**SIZE OF KODAK:** No. 2C,  $1\frac{3}{4} \times 4\frac{3}{8} \times 8\frac{3}{4}$  inches; No. 3A,  $1\frac{15}{16} \times 5\frac{1}{8} \times 9\frac{3}{4}$  inches.

**CAPACITY WITHOUT RELOADING:** Both, 10 exposures.

**WEIGHT:** No. 2C, 34 ounces; No. 3A, 37 ounces.

**FOCUS:** Adjustable, with automatic focusing lock.

**LENSES:** Meniscus Achromatic; Rapid Rectilinear, No. 2C,  $5\frac{1}{2}$ -inch focus, No. 3A,  $6\frac{3}{4}$ -inch focus; or Kodak Anastigmat, *f.7.7*, No. 2C,  $5\frac{1}{2}$ -inch focus; No. 3A,  $6\frac{3}{4}$ -inch focus.

**SHUTTER:** Kodak Ball Bearing; or multiple speed shutter (with Anastigmat equipment only).

**SPEEDS:** Kodak Ball Bearing,  $1/25$ ,  $1/50$  and  $1/100$  second, and time and "bulb" actions.

**FINDER:** Brilliant; reversible for vertical or horizontal pictures.

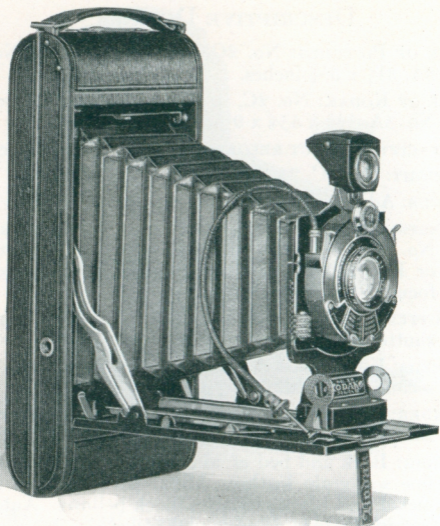
**FINISH:** Back and bed of aluminum, covered with fine seal-grain leather. Metal parts finished in nickel and black enamel. Black bellows. Auto-graphic feature. Two tripod sockets.

### *Prices*

AUTOGRAPHIC KODAK JUNIOR WITH KODAK BALL BEARING SHUTTER	No. 2C	No. 3A
With Meniscus Achromatic lens . . . . .	\$16.00	\$17.50
With Rapid Rectilinear lens . . . . .	18.00	20.00
With Kodak Anastigmat <i>f.7.7</i> lens . . . . .	23.00	25.00
With Kodak Anastigmat <i>f.7.7</i> lens and multiple speed shutter . . . . .	27.00	29.00
Black Sole Leather Case, with strap. . . . .	3.25	3.75
Autographic Film Cartridge, 10 exposures (No. A 130) for No. 2C; (No. A 122) for No. 3A	.75	.90
Ditto, 6 exposures . . . . .	.45	.55
Kodak Portrait Attachment (see page 32) . . . . .	.75	.75
Kodak Self Timer (see page 32) . . . . .	1.25	1.25

*The prices of cameras and film include the Excise Tax*





Nos. 1<sub>A</sub> and 2<sub>C</sub>  
**KODAKS, Series III**

*Ready July 1*

These latest recruits to the Kodak line are sure to meet with immediate popularity and rightly so.

The Diomatic Shutter, for instance, an Eastman achievement, appears for the first time on this camera. It gives positive speeds of  $1/10$ ,  $1/25$ ,  $1/50$  and  $1/100$  of a

second and it's fitted with an automatic dial that shows you the exposure you want for the light you have.

Focusing this camera is unusually easy — it's all in a short motion of a handy, smooth-sliding lever.

### DESCRIPTIVE DETAILS

SIZE OF PICTURES: No. 1A,  $2\frac{1}{2} \times 4\frac{1}{4}$  inches; No. 2C,  $2\frac{7}{8} \times 4\frac{7}{8}$  inches.

SIZE OF KODAK: No. 1A,  $1\frac{9}{16} \times 8 \times 3\frac{5}{16}$  inches; No. 2C,  $1\frac{9}{16} \times 8\frac{3}{4} \times 3\frac{7}{8}$  inches.

CAPACITY: No. 1A, 12 exposures; No. 2C, 10 exposures.

WEIGHT: No. 1A, 27 ounces; No. 2C, 35 ounces.

FOCUS: Adjustable only, with lever focusing device.

LENS: Kodak Anastigmat, *f*.7.7—No. 1A,  $5\frac{1}{4}$ -inch focus; No. 2C,  $5\frac{1}{2}$ -inch focus.

SHUTTER: Diomatic, with cable and finger release.

SPEEDS: 1/10, 1/25, 1/50, 1/100 as well as time and "bulb" actions.

FINDER: Brilliant; reversible for horizontal or vertical pictures.

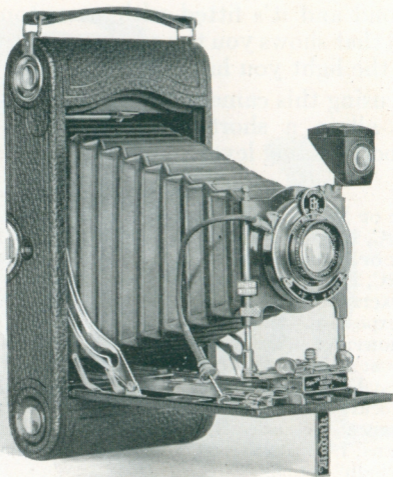
FINISH: Metal parts in nickel and black enamel. Body of aluminum, covered with baby crepe grain cowhide. Black bellows.

MISCELLANEOUS: Autographic feature. Two tripod sockets. Rising and falling front.

### Prices

KODAK, SERIES III, with Kodak Anastigmat	No. 1A	No. 2C
Lens, <i>f</i> .7.7, and Diomatic Shutter . . . . .	\$30.00	\$33.00
Black Sole Leather Case, with strap. . . . .	3.00	3.50
Autographic Film Cartridge, 12 exposures (No. A 116) for No. 1A; 10 exposures (No. A 130) for No. 2C . . . . .	.60	.75
Ditto, 6 exposures (No. A 116) for No. 1A; (No. A 130) for No. 2C . . . . .	.30	.45
Kodak Portrait Attachment (page 32). . . . .	.75	.75
Kodak Self Timer (see page 32) . . . . .	1.25	1.25

*The prices of cameras and film include the Excise Tax*



## Nos. 3 and 3<sub>A</sub> Autographic KODAKS

After all, there's no test like popularity. And these two models have long been photographic favorites.

With either of these models, by the addition of the combination back, you have access to the large field of cut film and plates usually limited to larger, more expensive cameras.

## DESCRIPTIVE DETAILS

**SIZE OF PICTURES:** No. 3,  $3\frac{1}{4} \times 4\frac{1}{4}$  inches; No. 3A,  $3\frac{1}{4} \times 5\frac{1}{2}$  inches.

**SIZE OF KODAK:** No. 3,  $1\frac{3}{4} \times 4\frac{1}{2} \times 7\frac{1}{2}$  inches; No. 3A,  $2 \times 4\frac{3}{4} \times 9\frac{1}{2}$  inches.

**CAPACITY:** No. 3, 12; No. 3A, 10 exposures.

**WEIGHT:** No. 3, 30 ounces; No. 3A, 41 ounces.

**FOCUS:** Adjustable, with automatic focusing lock; No. 3A has double scale for film or plates.

**LENSES:** Rapid Rectilinear; No. 3,  $5\frac{1}{4}$ -inch focus; No. 3A,  $6\frac{1}{2}$ -inch focus; Kodak Anastigmat *f.7.7*; No. 3,  $5\frac{1}{4}$ -inch focus; No. 3A,  $6\frac{3}{4}$ -inch focus.

**SHUTTER:** Kodak Ball Bearing,  $1/25$ ,  $1/50$  and  $1/100$  second; multiple speed on 3A with Anastigmat equipment only. Time and "bulb" actions on both. Cable and finger release on both.

**FINDER:** Brilliant; reversible.

**FINISH:** Metal parts in nickel and black enamel. Back and bed of aluminum, covered with seal grain leather. Black bellows.

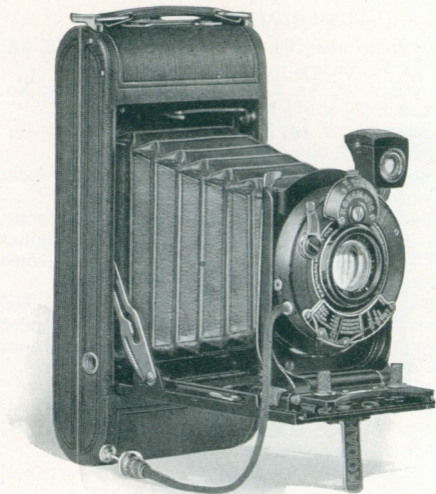
**MISCELLANEOUS:** Autographic feature. Two tripod sockets. Rising, falling and sliding front.

### *Prices*

AUTOGRAPHIC KODAK with Kodak Ball Bearing Shutter	No. 3	No. 3A
With Rapid Rectilinear Lens . . . . .	\$19.00	\$22.50
With Kodak Anastigmat <i>f.7.7</i> Lens . . . . .	24.00	27.50
Ditto, with multiple speed shutter and Kodak Anastigmat <i>f.7.7</i> lens . . . . .		31.50
Black Sole Leather Case, with strap. . . . .	3.50	4.00
Combination Back . . . . .	4.00	4.00
Double Glass Plate Holders, each. . . . .	1.50	1.50
Kodak Cut Film Sheaths, each . . . . .	.10	.15
Kodak Cut Film, package of 12 . . . . .	.67	.93
Autographic Film Cartridge, 12 exposures (No. A 118) for No. 3; 10 exposures (No. A 122) for No. 3A . . . . .	.90	.90
Ditto, 6 exposures . . . . .	.45	.55
Kodak Portrait Attachment (see page 32). . . . .	.75	.75
Kodak Self Timer (see page 32) . . . . .	1.25	1.25

*The prices of cameras and film include the Excise Tax*





## No. 1 Autographic KODAK *Special*

Smooth to the touch, pleasing to the eye; you'll like this Kodak the minute you see it. It's compact and easily carried — yet includes many photographic refinements usually found only on large cameras.

Kodak Anastigmat lens  $f.6.3$  gives the speed that can be called upon to cope with the difficult situation. The Kodamatic

shutter offers a selection of seven regulated speeds from 1/200 to 1/2 second — and time and “bulb” of course. And the automatic exposure dial shows you the correct diaphragm opening for any given speed.

## DESCRIPTIVE DETAILS

SIZE OF PICTURES:  $2\frac{1}{4} \times 3\frac{1}{4}$  inches.

SIZE OF KODAK:  $1\frac{5}{16} \times 3\frac{1}{16} \times 6\frac{7}{16}$  inches.

CAPACITY WITHOUT RELOADING: 6 exposures.

WEIGHT: 18 ounces.

FOCUS: Adjustable only, with screw focusing device.

LENSES: For details see price list below.

SHUTTER: Kodamatic, with cable release.

SPEEDS: Seven, from 1/200 to 1/2 second with time and “bulb” actions.

FINDER: Brilliant; reversible for vertical or horizontal pictures.

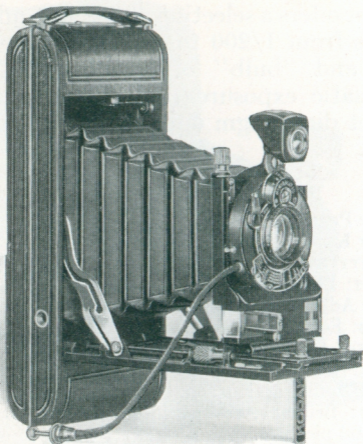
FINISH: Metal parts in nickel and black enamel. Aluminum body covered with finest quality genuine sealskin. Black leather bellows.

MISCELLANEOUS: Autographic feature, counter-sunk. Two tripod sockets.

## Prices

No. 1 AUTOGRAPHIC KODAK <i>Special</i> , with Kodak Anastigmat lens <i>f.6.3</i> , $4\frac{1}{2}$ -inch focus, and Kodamatic shutter . . . . .	\$50.00
With Bausch & Lomb Kodak Anastigmat lens <i>f.6.3</i> , No. 1, $4\frac{1}{2}$ -inch focus, and Kodamatic shutter . . . . .	62.00
With Bausch & Lomb Tessar Series IIb lens <i>f.6.3</i> , No. 3, $4\frac{1}{2}$ -inch focus, and Kodamatic shutter . . . . .	78.75
With Bausch & Lomb Tessar Series Ic lens <i>f.4.5</i> , No. 12, $3\frac{1}{2}$ -inch focus, and Kodamatic shutter . . . . .	76.50
Long-grain Leather Case, velvet-lined, with strap . . . . .	3.75
Autographic Film Cartridge, 6 exposures (No. A 120) . . . . .	.25
Kodak Portrait Attachment (see page 32) . . . . .	.75
Kodak Self Timer (see page 32) . . . . .	1.25

*The prices of cameras and film include the Excise Tax*



## Nos. 1<sub>A</sub> and 2<sub>C</sub> Autographic KODAKS *Special*

These models have a truly "distinctive" look. They're so splendidly finished and so complete, photographically, with the fast Kodak Anastigmat *f*.6.3 lens and the accurate Kodamatic Shutter, that it's a joy to use them.

Every one of the numerous attachments is designed to help you in making good pictures. You'll be enthusiastic about either of these Kodaks.

## DESCRIPTIVE DETAILS

**SIZE OF PICTURES:** No. 1A,  $2\frac{1}{2} \times 4\frac{1}{4}$  inches; No. 2C,  $2\frac{7}{8} \times 4\frac{7}{8}$  inches.

**SIZE OF KODAK:** No. 1A,  $1\frac{1}{2} \times 3\frac{5}{16} \times 8$  inches; No. 2C,  $1\frac{9}{16} \times 8\frac{3}{4} \times 3\frac{7}{8}$  inches.

**CAPACITY WITHOUT RELOADING:** No. 1A, 12 exposures; No. 2C, 10 exposures.

**WEIGHT:** No. 1A, 27 ounces; No. 2C, 32 ounces.

**FOCUS:** Adjustable, with screw focusing device.

**LENS:** Kodak Anastigmat *f*.6.3; No. 1A, 5-inch focus; No. 2C, 6-inch focus.

**SHUTTER:** Kodamatic, with cable release.

**SPEEDS:** No. 1A, seven from  $1/200$  to  $1/2$  second; No. 2C, seven from  $1/150$  to  $1/2$  second. Time and "bulb" actions on each.

**FINDER:** Brilliant; reversible for horizontal or vertical pictures.

**FINISH:** Aluminum body covered with finest quality genuine sealskin. Metal parts finished in nickel and black enamel. Black leather bellows.

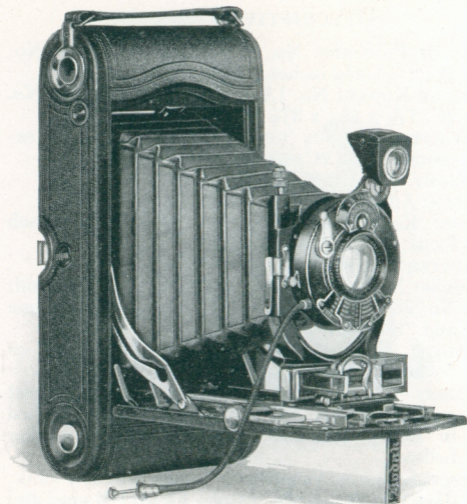
**MISCELLANEOUS:** Autographic feature, counter-sunk. Two tripod sockets. Range Finder. Rising and falling front.

### *Prices*

	No. 1A	No. 2C
AUTOGRAPHIC KODAK <i>Special</i> , with Kodak Anastigmat Lens, <i>f</i> . 6.3 and Kodamatic Shutter. . . . .	\$60.00	\$65.00
Long-grain Leather Case, velvet-lined, with strap . . . . .	4.50	5.00
Autographic Film Cartridge No. 1A, 12 exposures (No. A 116); No. 2C, 10 exposures (No. A 130). . . . .	.60	.75
Ditto, 6 exposures . . . . .	.30	.45
Kodak Portrait Attachment (see page 32) . . . . .	.75	.75
Kodak Self Timer (see page 32) . . . . .	1.25	1.25

*The prices of cameras and film include the Excise Tax*





## Nos. 3 and 3A Autographic KODAKS *Special*

Either the 3 or 3A *Special* is the kind of camera you're proud to own and makes the kind of pictures you're proud to show. Their very appearance speaks quality. An aluminum body smoothly covered with genuine Persian Morocco leather; appointments in nickel and black enamel; everything your eye lights on pleases it.

## DESCRIPTIVE DETAILS

**SIZE OF PICTURES:** No. 3,  $3\frac{1}{4} \times 4\frac{1}{4}$  inches; No. 3A,  $3\frac{1}{4} \times 5\frac{1}{2}$  inches.

**CAPACITY:** No. 3, 12; No. 3A, 10 exposures.

**WEIGHT:** No. 3, 32 ounces; No. 3A, 42 ounces.

**FOCUS:** Adjustable.

**LENSES:** For details see "Prices" below.

**SHUTTERS:** Kodamatic, Ilex Acme or Optimo.

**SPEEDS:** Kodamatic, seven; No. 3,  $1/200$  to  $1/2$  second; No. 3A,  $1/150$  to  $1/2$ .

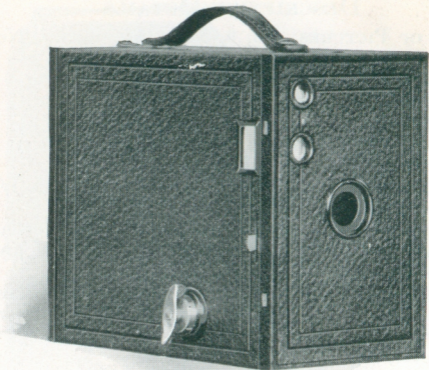
**FINISH:** Aluminum body covered with Persian Morocco. Metal parts finished in nickel and black enamel. Black leather bellows.

**MISCELLANEOUS:** Autographic feature; Brilliant finder; Rising, sliding and falling front; two tripod sockets; No. 3 equipped with spirit level; No. 3A with Range Finder.

### Prices

	No. 3	No. 3A
AUTOGRAPHIC KODAK <i>Special</i> , with Kodak Anastigmat <i>f.6.3</i> lens, 5-inch focus on No. 3; $6\frac{3}{4}$ -inch focus on No. 3A;		
With Kodamatic Shutter . . . . .	\$55.00	\$70.00
With Ilex Acme or Optimo Shutter . . . . .	45.00	60.00
With Bausch & Lomb Kodak Anastigmat <i>f.6.3</i> lens, No. 2- $5\frac{1}{4}$ -inch focus on No. 3; No. 4, $6\frac{3}{4}$ -inch focus on No. 3A;		
With Kodamatic Shutter . . . . .	70.00	90.00
With Ilex Acme or Optimo Shutter . . . . .	60.00	80.00
With Bausch & Lomb Tessar Series IIb Anastigmat <i>f.6.3</i> lens; No. 4- $5\frac{1}{4}$ -inch focus on No. 3; No. 5K- $7\frac{1}{4}$ -inch focus on No. 3A;		
With Kodamatic Shutter . . . . .	80.00	104.00
With Ilex Acme or Optimo Shutter . . . . .	70.00	94.00
Grain Leather Case, velvet-lined, with strap . . . . .	4.75	5.25
Combination Back for cut film or plates . . . . .	4.50	5.00
Double glass plate holders, each . . . . .	1.50	1.50
Kodak Cut Film Sheaths, each . . . . .	.10	.15
Kodak Cut Film, package of 12 . . . . .	.67	.93
Autographic Film Cartridges, 12 exposures (No. A 118) for No. 3; 10 exposures (No. A 122) for No. 3A . . . . .	.90	.90
Ditto, 6 exposures . . . . .	.45	.55
Kodak Portrait Attachment (see page 32) . . . . .	.75	.75
Kodak Self Timer (see page 32) . . . . .	1.25	1.25

*The prices of cameras and film include the Excise Tax*



### *New Models*

## Nos. 2 and 2A Brownies

Made by Kodak workmen in Kodak shops—that's the certificate of service for every Brownie. It's no wonder these little cameras give such satisfactory results—for youngsters or grown-ups.

These two models, recently redesigned, are of metal throughout, covered with imitation leather. This makes them strong to stand the rough usage children give them. Other improvements include easier loading mechanism and the presence of two tripod sockets.

## DESCRIPTIVE DETAILS

SIZE OF PICTURES: No. 2,  $2\frac{1}{4} \times 3\frac{1}{4}$  inches; No. 2A,  $2\frac{1}{2} \times 4\frac{1}{4}$  inches.

SIZE OF CAMERA: No. 2,  $3 \times 4 \times 5\frac{7}{16}$  inches; No. 2A,  $3\frac{1}{4} \times 5 \times 6$  inches.

CAPACITY: No. 2, 6 exposures; No. 2A, 12 exposures.

WEIGHT: No. 2,  $16\frac{1}{2}$  ounces; No. 2A,  $21\frac{1}{2}$  ounces.

FOCUS: Fixed only.

LENSES: No. 2, Single Meniscus; No. 2A, Meniscus Achromatic.

SHUTTER: Eastman Rotary, with three stops and time action.

FINDER: Two ground glass, for vertical or horizontal pictures.

FINISH: Body of aluminum, covered with imitation leather. Metal parts in nickel and black enamel.

MISCELLANEOUS: Two tripod sockets.

### *Prices*

BROWNIE CAMERA, Single Meniscus Lens on	No. 2	No. 2A
No. 2, Meniscus Achromatic Lens on No.		
2A, Eastman Rotary Shutter . . . . .	\$ 2.75	\$ 3.75
Brownie Carrying Case, with strap . . . . .	1.25	1.50
N. C. Film Cartridge, 12 exposures (No. 116)		
for 2A. . . . .		.60
Ditto, 6 exposures (No. 116) for No. 2A;		
(No. 120) for No. 2 . . . . .	.25	.30
Kodak Portrait Attachment (see page 32) . .	.50	.50
Developing and Printing Outfit . . . . .	2.00	2.00

*The prices of cameras and film include the Excise Tax*





## Nos. 0, 2C and 3 Brownies

Substantial, reliable — describes these Brownie cameras. They're so simple to work—just point the camera and press the release. Children can operate them and their simplicity appeals to grown-ups as well.

Kodak workmen put staunch construction in every Brownie. Every lens is carefully tested before it leaves the factory. Brownie cameras are ready for results. They make good because they make good pictures.

## DESCRIPTIVE DETAILS

SIZE OF PICTURES: No. 0,  $1\frac{5}{8} \times 2\frac{1}{2}$  inches; No. 2C,  $2\frac{7}{8} \times 4\frac{7}{8}$  inches; No. 3,  $3\frac{1}{4} \times 4\frac{1}{4}$  inches.

SIZE OF CAMERAS: No. 0,  $2\frac{5}{8} \times 3\frac{3}{8} \times 4\frac{1}{8}$  inches; No. 2C,  $3\frac{7}{8} \times 6\frac{1}{4} \times 7\frac{1}{4}$  inches; No. 3,  $4\frac{3}{8} \times 5\frac{1}{8} \times 6\frac{1}{8}$  inches.

CAPACITY WITHOUT RELOADING: No. 0, 8 exposures; No. 2C, 10 exposures; No. 3, 12 exposures.

WEIGHT: No. 0, 8 ounces; No. 2C, 28 ounces; No. 3, 25 ounces.

FOCUS: Fixed only.

LENSES: No. 0, Meniscus; No. 2C and No. 3, Meniscus Achromatic.

SHUTTERS: No. 0, Eastman Rotary, with one stop and time action; No. 2C and No. 3, Eastman Rotary, with three stops and time action.

FINDER: Ground Glass, for horizontal or vertical pictures.

FINISH: Covered with imitation leather.

MISCELLANEOUS: Nos. 2C and 3 have two tripod sockets.

### *Prices*

	No. 0	No. 2C	No. 3
BROWNIE CAMERA, Meniscus lens, Eastman Rotary Shutter . . . . .	\$2.00		
Ditto, with Meniscus Achromatic lens, Eastman Rotary Shutter . . . . .		\$5.00	\$4.50
Brownie Carrying Case, with strap . . . . .	1.00	1.60	1.60
N. C. Film Cartridge: No. 0, 8 exposures (No. 127); No. 2C, 10 exposures (No. 130); No. 3, 12 exposures (No. 124) . . . . .	.25	.75	.90
Ditto, 6 Exposures . . . . .		.45	.45
Brownie Tripod Adapter . . . . .	.25		
Kodak Portrait Attachment . . . . .	.50	.75	.75
Developing and Printing Outfit . . . . .	2.00	2.00	2.00

*The prices of cameras and film include the Excise Tax*

# Nos. 2 and 2<sup>A</sup> Folding Autographic Brownies

## *With Kodex Shutter*

They're fitted with the new Kodex shutter which makes its first appearance on these cameras. Accurate snap-shot speeds of 1/25 and 1/50 of a second—as well as time and “bulb” actions—offer you greater certainty of making good pictures. That's the primary function of these Brownies—good pictures. You'll prove it the very first lot you make.

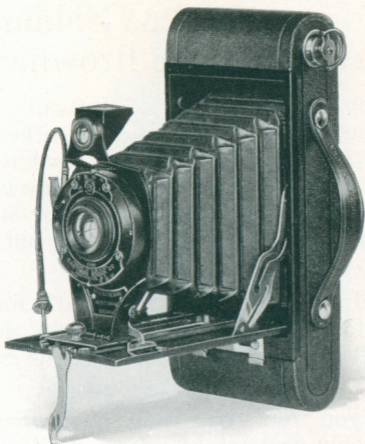
And the beauty of it is that they make these good pictures so easily.

They've borrowed from Kodaks the autographic feature. That's an added convenience.

### *Prices*

FOLDING AUTOGRAPHIC BROWNIE with Kodex Shutter	No. 2	No. 2A
With Meniscus Achromatic lens. . . . .	\$ 9.00	\$10.00
With Rapid Rectilinear lens . . . . .	11.00	12.00
Carrying Case for Folding Autographic Brownie, with strap. . . . .	1.50	1.60
Autographic Film Cartridge, 12 exposures (No. A 116) for No. 2A . . . . .		.60
Ditto, 6 exposures (No. A 120) for No. 2 . . . . .	.25	
Ditto, 6 exposures (No. A 116) for No. 2A . . . . .		.30
Kodak Portrait Attachment (see page 32). . . . .	.75	.75
Kodak Self Timer (see page 32) . . . . .	1.25	1.25

*The prices of cameras and film include the Excise Tax*



## DESCRIPTIVE DETAILS

**SIZE OF PICTURES:** No. 2,  $2\frac{1}{4} \times 3\frac{1}{4}$  inches; No. 2A,  $2\frac{1}{2} \times 4\frac{1}{4}$  inches; **SIZE OF CAMERAS:** No. 2,  $1\frac{1}{4} \times 3\frac{1}{8} \times 6\frac{1}{2}$  inches; No. 2A,  $1\frac{7}{16} \times 3\frac{3}{8} \times 7\frac{7}{8}$  inches.  
**CAPACITY:** No. 2, 6; No. 2A, 12 exposures.  
**WEIGHT:** No. 2, 19 ounces; No. 2A,  $25\frac{1}{2}$  ounces.  
**FOCUS:** Adjustable, with automatic focusing lock.  
**LENSES:** Meniscus Achromatic; or Rapid Rectilinear, No. 2,  $3\frac{3}{4}$ -inch focus; No. 2A, 5-inch focus.  
**SHUTTER:** Kodex, with cable and finger release.  
**SPEEDS:**  $1/25$  and  $1/50$ , time and "bulb" action.  
**FINDER:** Ground glass, reversible.  
**FINISH:** Metal body covered with imitation leather. Black bellows. Autographic feature. Two tripod sockets.



## Nos. 2C and 3A Folding Autographic Brownies

“You can’t beat a Brownie,” an enthusiastic amateur said the other day. Well, if you want picture making the easiest way, you can’t. That’s the beauty of the Brownie. That’s why it’s so popular with young folks and old folks alike.

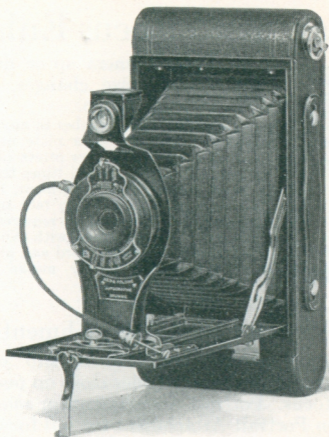
Sturdy metal construction; neatly finished in imitation leather; simple in design; “built for business,” you’ll say the minute you see one.

And you won’t be wrong. For when you get your first lot of prints you’ll realize just how easy it is to make good pictures with a Brownie.

### Prices

FOLDING AUTOGRAPHIC BROWNIE with Men-	No. 2C	No. 3A
iscus Achromatic lens and Kodak Ball Bearing shutter . . . . .	\$13.00	\$14.50
With Rapid Rectilinear lens . . . . .	15.00	17.00
Carrying Case, with strap . . . . .	1.70	1.80
Autographic Film Cartridge, 10 exposures, 2 <sup>7</sup> / <sub>8</sub> x 4 <sup>7</sup> / <sub>8</sub> (No. A 130) for No. 2C; 10 exposures, 3 <sup>1</sup> / <sub>4</sub> x 5 <sup>1</sup> / <sub>2</sub> (No. A 122) for No. 3A . . . . .	.75	.90
Ditto, 6 exposures . . . . .	.45	.55
Kodak Portrait Attachment (see page 32) . .	.75	.75
Kodak Self Timer (see page 32) . . . . .	1.25	1.25

*The prices of cameras and film include the Excise Tax*



## DESCRIPTIVE DETAILS

SIZE OF PICTURES: No. 2C,  $2\frac{7}{8} \times 4\frac{7}{8}$  inches; No. 3A,  $3\frac{1}{4} \times 5\frac{1}{2}$  inches.

SIZE OF CAMERAS: No. 2C,  $1\frac{3}{4} \times 3\frac{3}{4} \times 8\frac{11}{16}$  inches; No. 3A,  $1\frac{11}{16} \times 4\frac{5}{16} \times 9\frac{5}{16}$  inches.

CAPACITY WITHOUT RELOADING: 10 exposures.

WEIGHT: No. 2C, 27 ounces; No. 3A, 32 ounces.

FOCUS: Adjustable, with automatic focusing lock.

LENSES: Meniscus Achromatic; or Rapid Rectilinear, No. 2C,  $5\frac{1}{2}$ -inch focus; No. 3A,  $6\frac{1}{4}$ -inch.

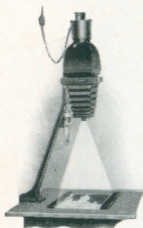
SHUTTER: Kodak Ball Bearing with cable release.

SPEEDS:  $1/25$ ,  $1/50$  and  $1/100$  second, and time and "bulb" actions.

FINDER: Ground glass; reversible for vertical or horizontal pictures.

FINISH: Metal parts in nickel and black enamel. Metal body covered with imitation leather. Black bellows. Two tripod sockets. Autographic.

# Kodak Auto-Focus Enlarger



Slide the camera up or down and the image size changes, but the focus stays sharp.

The apparatus attaches to any table top; accommodates film or plate negatives up to 4 x 6 inches; makes prints on Bromide paper from 1½ to 3½ times the negative size. Maximum enlargement, 14 x 21 inches. A Mazda Lamp (not supplied) of from 75 to 200 watts is required for printing. Price complete with Kodak Anastigmat lens, electric cord and plug, and set of six flexible metal masks (including Excise Tax) . . . . . \$35.00

Diffusing Disc for soft focus effects . . . . . 1.00

## Kodak Portrait Attachments

Two supplementary lenses that slip over the regular camera lens and render close up portraits in correct focus. Portrait Attachment for *sharp* focus; *Diffusion* Portrait Attachment for *soft* focus.

Kodak Portrait Attachment (for all cameras) . \$ .50 and .75

Kodak Diffusion Portrait Attachment . . . . \$1.25 and 1.50

(According to size)

## Kodak Self Timer

Attaches to any cable release and presses the button for you at any interval from ½ second to 1 minute. Price . . . . . \$1.25

## Kodak Cut Film

Offers all the advantages of plates with none of their drawbacks, and adds Cut Film convenience. Two speeds, regular and *Super Speed*—extra fast. Available for plate-holding cameras including both regular and *Special* models of the Nos. 3 and 3A Kodaks when equipped with Combination Backs and Kodak Cut Film Sheaths.

	Price per doz.			
	2¼ x 3¼	3¼ x 4¼	3¼ x 5½	4 x 5
Regular . . . . .	\$ .46	\$ .67	\$ .93	\$ .93
<i>Super Speed</i> . . . . .	.52	.77	1.03	1.03

Prices of film include the Excise Tax

C. A. MILLER  
509-509 $\frac{1}{2}$  REED ST.  
MOBERLY, MO.