

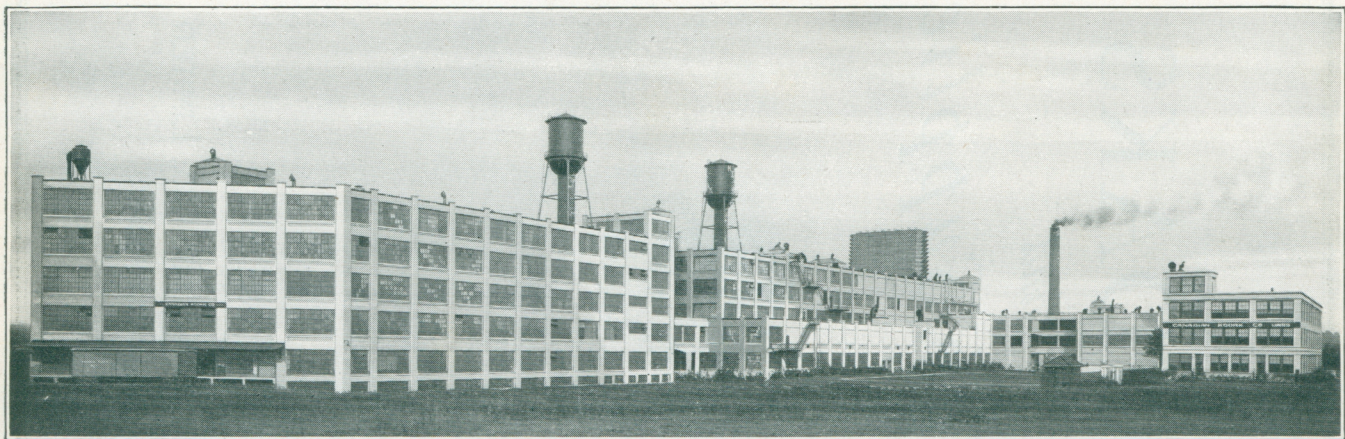
# KODAK



KODAKS  
*and*  
*Kodak Supplies*



1918  
CANADIAN KODAK CO., LIMITED  
*Toronto, Canada*



## KODAK HEIGHTS

CANADIAN KODAK Co., LIMITED, TORONTO, CANADA.

There can hardly be a more interesting frontispiece to a catalogue than a picture of the plant that produces the goods which the catalogue offers. Our home occupies a site of 25 acres, the floor space of the buildings amounting to eleven acres.

# INSIGNIA *of Progress*

---

IT may be safely said that in no other industry have the past and the present been welded into a more complete chain than in photography. And although there seems to be little in common between the tiny film used in the Kodak box of 1888, and the magic ribbon that unfolds its picture story on the screen to-day, yet, each made the other possible.

For thirty-eight years this growing chain of photographic progress has been linked to the growth and development and broadening of the Eastman products.

The striving for an orthochromatic plate that would not render reds too dark and blues too light, was one of the early steps toward the present day panchromatic plate used by engravers to produce the wonderful color pictures we see in the magazines. And it was the linking up of the tiny Kodak film, grown to the long cinematograph ribbon, with this same panchromatic emulsion, that made possible the color motion pictures.

Similarly the X-Ray emulsion has been applied to a film for dental use, and the emulsion used by the Eastman Company way back in 1882 on its Bromide paper, the kind of paper used for enlargements, is practically the same as that used for the positive film in motion-picture photography.

In making improvements in apparatus and sensitized materials for the professional, opportunity for improvement in some amateur product often becomes apparent. And by the same token it often works the other way about, as in the case of Eastman Portrait Film, where the experience gained in making film base, combined with the knowledge of how to

make the most perfect plate for professional portraiture, made possible a product that is now widely supplanting glass plates in the very best studios. And so every link in photography seems to fit into every other link until it becomes more than a chain—it becomes as a woven suit of mail.

Our organization and our knowledge of things photographic, built up and acquired through nearly four decades of serving these varied, though closely allied, industries, have placed us in a unique position in the production of superior apparatus and material. The very size of the business and its resources have rendered possible the establishment and maintenance of a Research Laboratory which carries on its work without the necessity of giving a thought to present profit. The truths that it establishes, the concrete facts that it unearths may not all be of intrinsic value today, but many of them will have their direct bearing on the photography of tomorrow.

In cameras and their accessories, in papers and plates and films, the products are used for distinct and widely variant purposes. But whether it be for the professional or the amateur, the surgeon, the scientist or the cinematographer, whether it be for the use of the astronomer in photographing the canals of the planet Mars, the press photographer capturing in its flight the racing automobile, or Mary making a snapshot of her soldier in his uniform, there is an interdependence in the products. The experimental work for bettering one product helps us, so frequently that one might almost say invariably, in making other things better. And having the men who *know*—scientists of the highest technical training, manufacturers whose long experience has taught them where the pitfalls are, experienced photographers with all the details of picture making at their finger tips—our research work counts for something. Having the men, the resources and the experience we are able to experiment with this process and with that piece of apparatus, to apply the acid test, at

our own expense, for the benefit of our customers. Whatever we market, whether a tiny Kodak to the most complex camera for scientific work, from a Brownie film to a Panchromatic plate, from a printing frame to an Anastigmat lens, is made under intelligent, experienced superintendence by men in whom honest workmanship has become a habit.

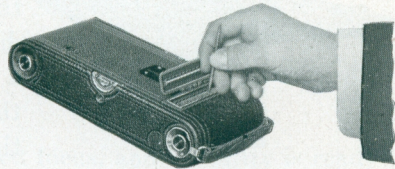
We not only cannot afford to make it wrong; we can afford to make it right. And we do. And therein lies the secret of Kodak dominance.

### AUTOGRAPHIC PHOTOGRAPHY

Not only have the sensitized products been perfected, but mechanical efficiency is something we have always striven to improve.

In 1914, Autographic photography became a reality. It had its inception because it was needed as a means of identifying unfamiliar scenes and connecting them with dates and places.

Kodak pictures are not made just for the pleasure of the taking, nor for the pleasure of seeing them today or tomorrow. They are made for the fuller pleasure of a l w a y s remembering



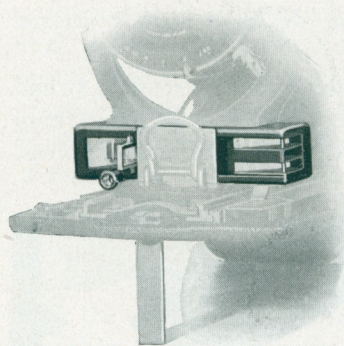
somebody, or some interesting place or event, and that is why the Autographic feature was added to all Kodaks and Folding Brownies. Somebody is going to save the Kodak pictures you make today, and no matter if it is many years hence, the fact that they can be readily identified and the dates established, makes them doubly valuable.

The Autographic record is photographically impressed on the film and becomes a part of the negative when the film strip is developed. The prices of Autographic Film and Kodak N. C. Film are the same; the process of development is the same, and either may be used in Kodaks or Brownies.

## THE KODAK RANGE FINDER

The Kodak Range Finder marks another epoch in the history of amateur photography—another important step in Kodak achievements.

When used with the same relative stop openings as other lenses, the high-speed anastigmats are equally simple to work. When used at their full opening they require more accurate focusing, because their depth of focus is then less. That is to say, if the photographer properly focuses on an object 15 feet away, objects 10 feet away and 20 feet away will be sharper



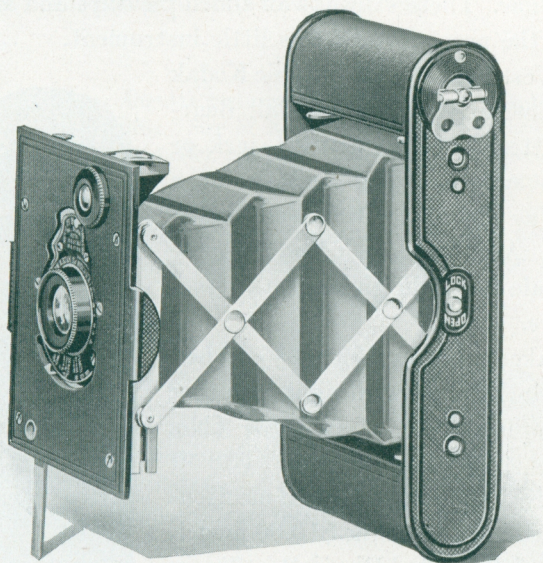
SHOWING POSITION OF RANGE FINDER  
ON 3A *Special*

when he uses a small stop than when he uses a large stop, no matter what the type of lens. With an anastigmat, however, objects *at the focused distance* will be more sharply defined than will objects at that same distance made with a single or a rectilinear lens. It is obvious, therefore, that with the anastigmat one must be a fairly good judge of distance when focusing by means of a scale, because an error in judging distance will be more damaging than with the slower small-stop lenses.

And here is where the Kodak Range Finder comes in. It gives you the correct focus to a hair. Its accuracy would be of material advantage with any camera. Because of the long focus and high-speed lenses used on the No. 1A and No. 3A *Special* Kodaks, the Kodak Range Finder has a very important value in its application to those cameras.

CANADIAN KODAK CO., LIMITED,  
TORONTO, CANADA.

## VEST POCKET *Autographic* KODAK



**I**T opens like a flash, to a fixed focus, and instantly is ready for service. And then, just a slight pressure of the shutter release, at the upper right hand side of the front standard, and your exposure is made.

That is the simple story of the simple little Vest Pocket Kodak—the camera that is as small as is practical for a camera to be, and yet make pictures with real photographic quality. And with its autographic feature, it is a veritable vest pocket notebook, adding to the photographic record, the memorandum record of all that goes to make every good time a lasting pleasure. It fits into the day and the place unobtrusively, and though made





almost entirely of metal to stand the knocks and bangs, is so light in weight and compact as to make it convenient to carry at any time. There's always an added pleasure and an advantage in the possession of this little instrument.

The Vest Pocket Autographic Kodak is fitted with No. 0 Kodak Ball Bearing shutter, working without jerk or jar, at speeds of  $\frac{1}{25}$  and  $\frac{1}{50}$  of a second, as well as the time and "bulb" actions. Also fitted with Kodak Auto-time Scale to aid in giving the correct exposure.

It makes pictures  $1\frac{5}{8} \times 2\frac{1}{2}$  inches, loading in daylight with eight-exposure Autographic Film Cartridges (No. A127). The Vest Pocket (\$8.50 model) is supplied with tested meniscus achromatic lens, and the \$10.00 model, with carefully tested Rapid Rectilinear lens, both producing excellent pictures under all ordinary conditions.

The three Anastigmat equipments for the Vest Pocket, *Special*, are as perfect as can be found on any fixed focus hand camera. The Kodak Anastigmat, *f. 7.7* lens, offers the usual advantages of an anastigmat, so far as sharpness, freedom from astigmatism and definition are concerned. The Kodak Anastigmat and Bausch & Lomb Kodak Anastigmat, *f. 6.9* lenses, give these same advantages plus the maximum of practical speed in a fixed focus camera.



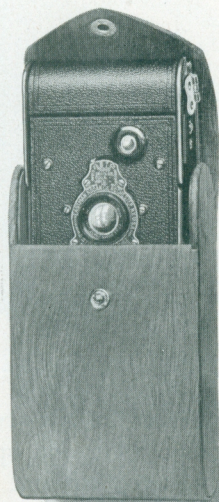
VEST POCKET KODAK  
(REGULAR) ACTUAL SIZE

The Vest Pocket Kodak has an all-metal body with black enamel finish for the regular model, while the *Special* is covered with finest pin grain Morocco leather.

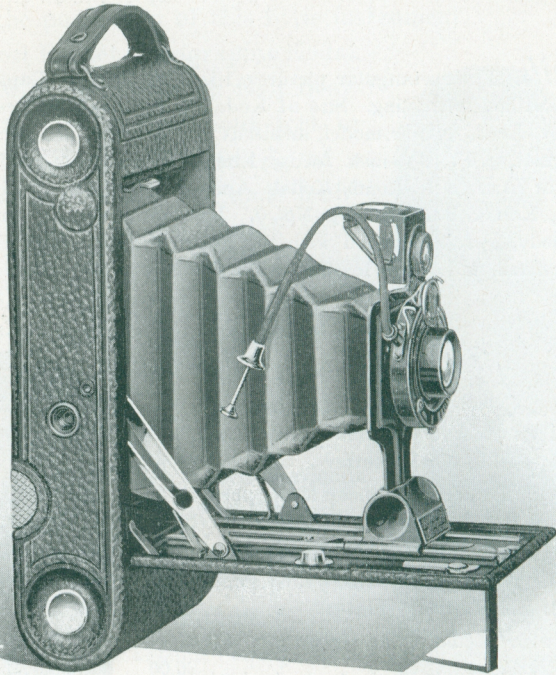
*Details* For rectangular pictures,  $1\frac{5}{8} \times 2\frac{1}{2}$  inches. Capacity, 8 exposures without reloading. Size of Kodak,  $1 \times 2\frac{3}{8} \times 4\frac{3}{4}$  inches. Weight, 9 ounces. Lens, regular model, meniscus achromatic; for *Special*, Kodak Anastigmat, *f.* 7.7,  $3\frac{3}{8}$ -inch focus; Kodak Anastigmat, *f.* 6.9,  $3\frac{3}{8}$ -inch focus; or Bausch & Lomb Kodak Anastigmat, *f.* 6.9,  $3\frac{1}{2}$ -inch focus. Shutter, Kodak Ball Bearing No. 0. Brilliant reversible finder. All-metal body, *Special* covered with pin grain Morocco; nickel and black enamel finish and black leather bellows.

### Price

Vest Pocket Autographic Kodak (regular model), meniscus achromatic lens and Kodak Ball Bearing shutter . . . . .	\$8.50
Ditto, with Rapid Rectilinear lens, speed U. S. 8 . . . . .	10.00
Vest Pocket Autographic Kodak, <i>Special</i> , Kodak Anastigmat lens, <i>f.</i> 7.7, and Kodak Ball Bearing shutter . . . . .	15.00
Ditto, with Kodak Anastigmat, <i>f.</i> 6.9 lens . . . . .	20.00
Ditto, with Bausch & Lomb Kodak Anastigmat, <i>f.</i> 6.9 lens . . . . .	27.50
Leather Case for Vest Pocket Kodak . . . . .	.75
Hand Bag for Vest Pocket Kodak . . . . .	.25
<i>De Luxe</i> Hand Bag, suede calfskin, long straps . . . . .	2.00
Grain Leather Case . . . . .	2.00
Imported Satin Finish Leather Case . . . . .	\$3.00
Belt Carrying Case (russet leather) . . . . .	1.75
Vest Pocket Kodak Tripod Adapter. (See page 57) . . . . .	.50
Autographic Film Cartridge, 8 exposures, $1\frac{5}{8} \times 2\frac{1}{2}$ (No. A 127) . . . . .	.20
Kodak Portrait Attachment. (See page 39) . . . . .	.50



Nos. 1 AND 1A  
*Autographic* KODAK JUNIORS



**THE** Juniors are thoroughly reliable cameras of high efficiency, easy to operate, and so thin and compact as to be pocketed without inconvenience. They are designed to fill the requirements of either the beginner, or the experienced, and at a low cost.

Though simple in every detail as focusing cameras, they will be supplied, if desired, as fixed focus cameras for those who prefer this feature. As fixed focus cameras, however, they are supplied only with meniscus achromatic lenses, as listed.

Both cameras are fitted with the Kodak Ball Bearing shutter, with cable release; the No. 1 having speeds of  $\frac{2}{5}$  and  $\frac{1}{50}$  of a second, except when supplied with *f.* 7.7 lens, in which case it has the same shutter that is supplied with the No. 1A, with speeds of  $\frac{2}{5}$ ,  $\frac{1}{50}$  and  $\frac{1}{100}$  of a second.

The No. 1 Junior makes  $2\frac{1}{4} \times 3\frac{1}{4}$  pictures, while the No. 1A makes pictures  $2\frac{1}{2} \times 4\frac{1}{4}$  inches, these being the only differences in the two cameras. Both are equipped with the autographic feature for the recording of dates and titles on the film; are well made in every respect, and covered with a good quality of grain leather.

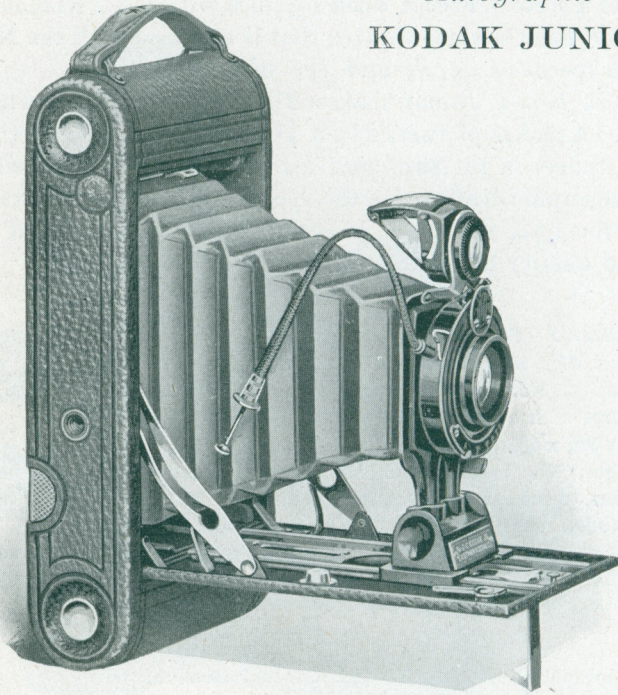
*Details* For rectangular pictures, No. 1,  $2\frac{1}{4} \times 3\frac{1}{4}$  inches; No. 1A,  $2\frac{1}{2} \times 4\frac{1}{4}$  inches. Capacity, No. 1, 6 exposures; No. 1A, 12 exposures without reloading. Size of Kodak, No. 1,  $1\frac{7}{16} \times 3\frac{5}{8} \times 6\frac{5}{8}$  inches; No. 1A,  $1\frac{5}{8} \times 3\frac{3}{4} \times 8$  inches. Weight, No. 1, 23 ounces; No. 1A, 28 ounces. Lenses, meniscus achromatic, Rapid Rectilinear, or Kodak Anastigmat, *f.* 7.7. Shutter, Kodak Ball Bearing with cable release. (See page 36.) Brilliant, reversible, collapsible finders.



### Price

Autographic Kodak Junior (fixed focus) meniscus achromatic lens and Kodak Ball Bearing shutter . . . . .	No. 1	No. 1A
	\$11.50	\$13.50
Autographic Kodak Junior (focusing model, with scale), meniscus achromatic lens and Kodak Ball Bearing shutter . . . . .	11.50	13.50
Ditto, with Rapid Rectilinear lens . . . . .	13.00	15.50
Ditto, with Kodak Anastigmat lens, <i>f.</i> 7.7 . . . . .	18.50	21.50
Black Sole Leather Case, with strap . . . . .	3.00	3.00
Autographic Film Cartridge, 12 exposures (No. A 116) for No. 1A . . . . .		.50
Ditto, 6 exposures (No. A 120) for No. 1; (No. A 116) for No. 1A . . . . .	.20	.25
Ditto, 2 exposures . . . . .	.10	.12
Kodak Portrait Attachment (See page 39) . . . . .	.50	.50

No. 2C  
*Autographic*  
KODAK JUNIOR



**THE 2C Junior** is similar, in every way, to the Nos. 1 and 1A Juniors, except in the size of the pictures it makes. It has the same thin, compact form and reliable equipment, but is supplied only as a focusing camera.

The 2C size, which was introduced about two years ago, was designed to retain the same pleasing proportions that have made the 1A and 3A sizes so popular. Its rectangular pictures ( $2\frac{7}{8} \times 4\frac{7}{8}$  inches) fit the view, making a pleasing composition in either the horizontal or vertical shapes.

The camera loads in daylight with ten, six or two-exposure Autographic Film Cartridges, permitting the recording of

date and title, or any data that one may desire on the negative. Though regularly supplied with meniscus achromatic lens, the camera, if desired, will be fitted with either Rapid Rectilinear or Kodak Anastigmat, *f.* 7.7 lens, the latter giving the advantages of a fine anastigmat equipment at a low price.

The shutter is the Kodak Ball Bearing with cable release, working at speeds of  $\frac{1}{25}$ ,  $\frac{1}{50}$  and  $\frac{1}{100}$  of a second, also for "bulb" and time exposures. The leaves of this shutter, opening in the shape of a star, admit the maximum of light for a given exposure.

The camera has the Kodak characteristics of simplicity, compactness and reliability, and offers the Kodak high standard of efficiency. It has automatic focusing lock, a finder of the new collapsible, reversible type, and two tripod sockets. The back and bed are of aluminum, covered with fine seal grain leather, black leather bellows, and metal parts in nickel and black enamel.

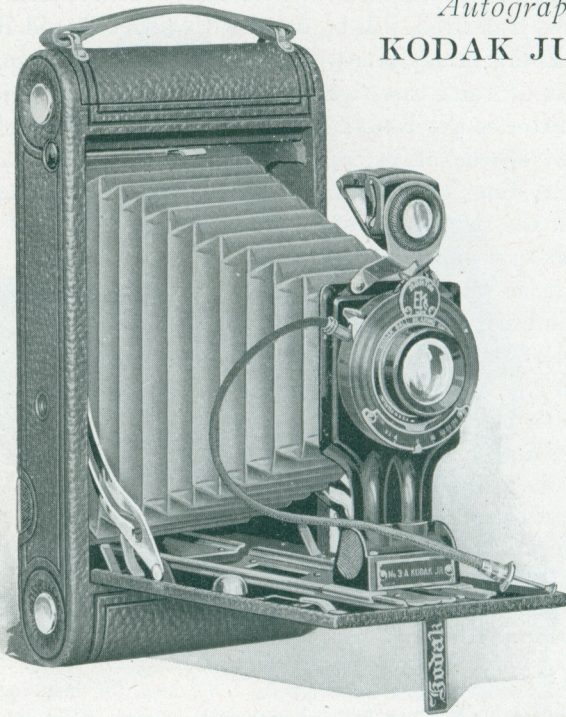


*Details* For rectangular pictures,  $2\frac{7}{8} \times 4\frac{7}{8}$  inches. Capacity, 10 exposures without reloading. Size of Kodak,  $1\frac{3}{4} \times 4\frac{3}{8} \times 8\frac{3}{4}$  inches. Weight, 38 ounces. Lens, meniscus achromatic. Also supplied with Rapid Rectilinear or Kodak Anastigmat, *f.* 7.7 lens,  $5\frac{3}{4}$ -inch focus, if desired. Shutter, Kodak Ball Bearing with cable release. (See page 36.) Brilliant, reversible, collapsible finder. Two tripod sockets. Black leather bellows.

### Price

No. 2C Autographic Kodak Junior, with meniscus achromatic lens and Kodak Ball Bearing shutter . . . . .	\$15.50
Ditto, with Rapid Rectilinear lens . . . . .	17.50
Ditto, with Kodak Anastigmat, <i>f.</i> 7.7 lens . . . . .	23.50
Black Sole Leather Case, with strap . . . . .	3.25
Autographic Film Cartridge, 10 exposures (No. A 130) . . . . .	.60
Ditto, 6 exposures . . . . .	.35
Ditto, 2 exposures . . . . .	.15
Kodak Portrait Attachment. (See page 39) . . . . .	.50

No. 3A  
*Autographic*  
KODAK JUNIOR



**H**ERE is a new camera, which is designed to meet the requirements of those who prefer the simplicity of the Junior line, in the 3A size. It has the same general characteristics as the other Juniors; the same relatively thin, compact form; the same reliable equipment, and like the 2C, is supplied only as a focusing camera.

The No. 3A Kodak Junior makes pictures  $3\frac{1}{4} \times 5\frac{1}{2}$  inches—the most popular of amateur sizes—which is adaptable to almost any composition, whether in the vertical or horizontal position. It loads with Autographic Film Cartridges of ten,

six and two exposures, and, of course, has the autographic feature so that the dates and titles may be written on the films at the time of exposure.

The camera is regularly supplied with meniscus achromatic lens, but, if preferred, may be had with either Rapid Rectilinear, or Kodak Anastigmat, *f.* 7.7 lens, the latter a lens of our own manufacture which has given excellent results.

The shutter used is the No. 2 Kodak Ball Bearing with both finger and cable release working automatically, at speeds of  $\frac{1}{25}$ ,  $\frac{1}{50}$  and  $\frac{1}{100}$  of a second, also for "bulb" and time exposures.

The camera is carefully constructed throughout, the back and bed are of aluminum, covered with fine seal grain leather, the bellows of black leather and metal parts in nickel and black enamel. The finder is large and of the collapsible, reversible type.



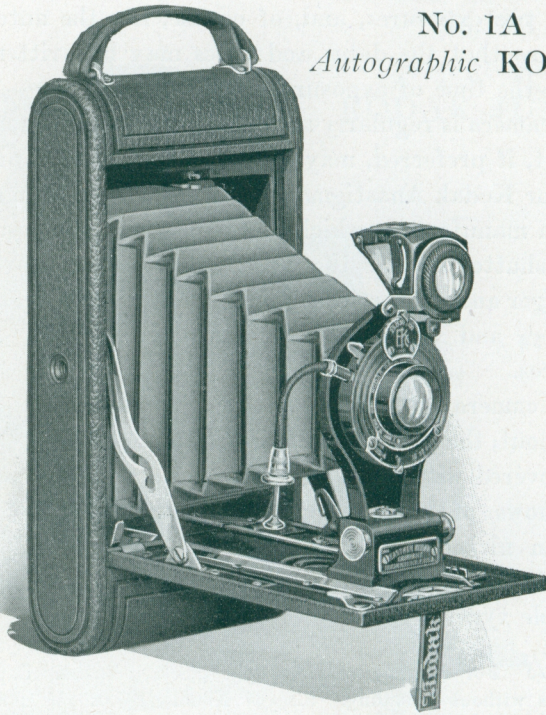
*Details* For rectangular pictures,  $3\frac{3}{4} \times 5\frac{1}{2}$  inches. Capacity, ten exposures without reloading. Size of Kodak,  $1\frac{1}{8} \times 5\frac{1}{8} \times 9\frac{3}{4}$  inches. Weight, 35 ounces. Lenses, meniscus achromatic, Rapid Rectilinear, focus  $6\frac{5}{8}$  inches, or, if desired, the Kodak Anastigmat, *f.* 7.7 lens,  $6\frac{1}{4}$ -inch focus. Shutter, Kodak Ball Bearing No. 2, with cable release. Automatic focusing lock. Two tripod sockets. Brilliant, collapsible, reversible finder. Black leather bellows. Covering, seal grain leather.

### Price

No. 3A Autographic Kodak Junior, with meniscus achromatic lens	\$17.50
Ditto, with Rapid Rectilinear lens . . . . .	20.00
Ditto, with Kodak Anastigmat lens, <i>f.</i> 7.7 . . . . .	26.00
Black Sole Leather Carrying Case . . . . .	3.50
Autographic Film Cartridge, 10 exposures (No. A 122) . . . . .	.70
Ditto, 6 exposures . . . . .	.40
Ditto, 2 exposures . . . . .	.20
Kodak Portrait Attachment. (See page 39) . . . . .	.50



No. 1A  
*Autographic* KODAK



**H**ERE is a thin, compact Kodak in the 1A size, offering every photographic advantage that could be desired by the most exacting amateur. In this model there have been incorporated many new features, adding not merely to its appearance, but to its efficiency as well. It is easy to load, quick to operate, and its compactness makes it a desirable companion on any occasion.

The back is so cleverly devised as to permit free and instant access to all interior parts; the finder is large and of the collapsible, reversible, skeleton type, that is easily accessible for cleaning.

The No. 1A makes  $2\frac{1}{2} \times 4\frac{1}{4}$  pictures, a shape that is widely adaptable to either horizontal or vertical composition. It has the autographic feature for the recording of data on the film, and loads in daylight with twelve, six and two-exposure Autographic Film Cartridges.

Although regularly supplied with the best quality Rapid Rectilinear lens, it will be fitted, if desired, with Kodak Anastigmat lens, *f.* 7.7, giving the advantages of a fine anastigmat equipment at a low price. The shutter is the Kodak Ball Bearing, with cable release, working at speeds of  $\frac{1}{25}$ ,  $\frac{1}{50}$  and  $\frac{1}{100}$  of a second, and time and "bulb" exposures.



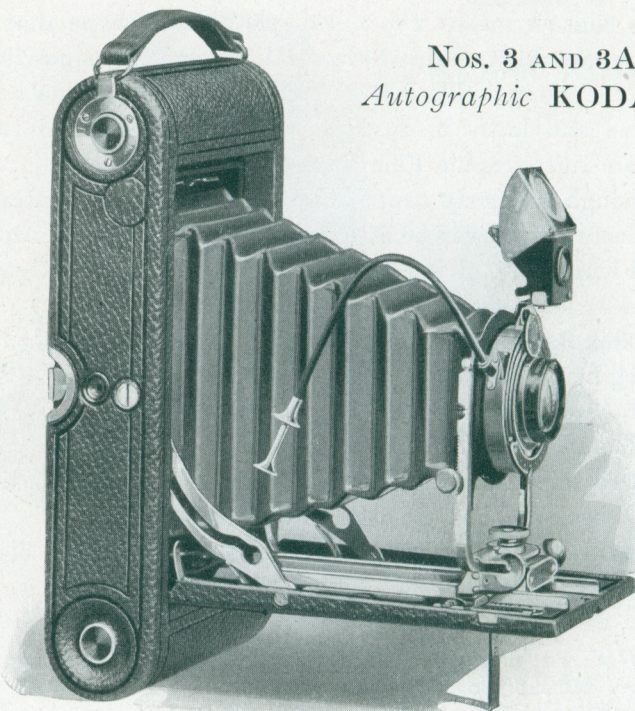
It has an improved automatic focusing lock, two tripod sockets, bellows of black leather, back and bed are covered with fine seal grain leather, and metal parts are in nickel and black enamel.

*Details* For rectangular pictures,  $2\frac{1}{2} \times 4\frac{1}{4}$  inches. Capacity, 12 exposures without reloading. Size of Kodak,  $1\frac{5}{8} \times 3\frac{3}{4} \times 8$  inches. Weight,  $27\frac{1}{2}$  ounces. Lens, double combination, Rapid Rectilinear,  $5\frac{5}{16}$ -inch focus, or, if desired, Kodak Anastigmat lens, *f.* 7.7,  $5\frac{1}{8}$ -inch focus. Shutter, Kodak Ball Bearing with cable release. Automatic focusing lock. Two tripod sockets. Brilliant, collapsible, reversible finder. Black leather bellows.

### Price

No. 1A Autographic Kodak, with Rapid Rectilinear lens and Kodak Ball Bearing shutter . . . . .	\$18.50
Ditto, with Kodak Anastigmat lens, <i>f.</i> 7.7 . . . . .	24.50
Black Sole Leather Case, with strap . . . . .	3.00
Autographic Film Cartridge, 12 exposures (No. A H16) . . . . .	.50
Ditto, 6 exposures . . . . .	.25
Ditto, 2 exposures . . . . .	.12
Kodak Portrait Attachment. (See page 39) . . . . .	.50

NOS. 3 AND 3A  
*Autographic* KODAKS



SINCE its introduction of the post-card size picture, the 3A Kodak has been the leader in the hand camera field. Although the largest of the pocket Kodak series, the camera itself may be carried without inconvenience, and the fact that the shape of the picture ( $3\frac{1}{4} \times 5\frac{1}{2}$ ) is especially adapted to landscapes or portraits, has made it one of our most popular models.

By omitting no detail that is essential to the best results in general amateur photography, and adding none that is superfluous, the 3A Kodak, with its autographic feature, meets every need of the most advanced amateur.

In lens equipment, this camera is regularly supplied with the finest quality Rapid Rectilinear lens, with a speed of *f.* 8, or, if desired, the Kodak Anastigmat, *f.* 7.7 lens, offering the

anastigmat advantages at a moderate price. Both the 3 and 3A will accommodate glass plates by the addition of a Combination Back. This back is interchangeable with the regular back, but it should be remembered that autographic records can be made only when the Autographic back is used, and not with Combination back or glass plates. The No. 3 Kodak is practically identical with the 3A, except in size and except that it has a capacity of twelve, six and two exposures, whereas the 3A uses ten, six and two-exposure Autographic Film Cartridges. No. 3 has a front standard of different design from that of No. 3A. Both are made of aluminum and covered with best quality seal grain leather.

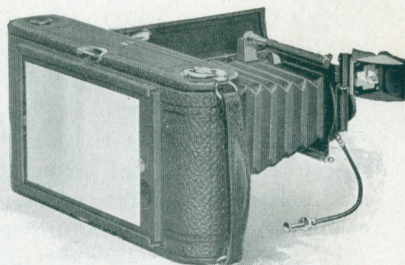


*Details* For rectangular pictures, No. 3,  $3\frac{1}{4} \times 4\frac{1}{4}$  inches; No. 3A,  $3\frac{1}{4} \times 5\frac{1}{2}$  inches. Capacity, No. 3, 12 exposures; No. 3A, 10 exposures without reloading. Size of Kodak, No. 3,  $1\frac{3}{4} \times 4\frac{1}{2} \times 7\frac{1}{2}$  inches; No. 3A,  $2 \times 4\frac{3}{4} \times 9\frac{1}{2}$  inches. Weight, No. 3, 23 ounces; No. 3A, 41 ounces. Lenses (regular equipment), Rapid Rectilinear, focal length for No. 3, 5 inches; No. 3A,  $6\frac{3}{4}$  inches, or, if desired, Kodak Anastigmat, *f.* 7.7 lenses. Shutters, Kodak Ball Bearing with cable release. Two tripod sockets. Black leather bellows. Brilliant, reversible finders with hoods. Rising and sliding fronts. Automatic focusing locks.

### Prices

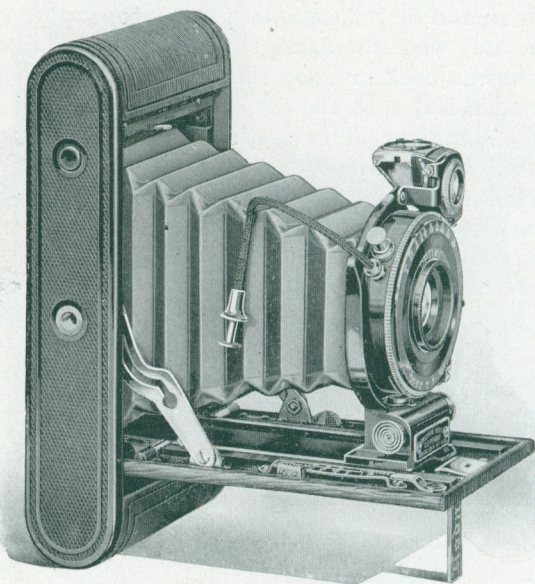
	No. 3 $3\frac{3}{4} \times 4\frac{1}{4}$	No. 3A $3\frac{1}{4} \times 5\frac{1}{2}$
Autographic Kodak, Rapid Rectilinear lens, Kodak Ball Bearing shutter . . . . .	\$19.50	\$23.50
Ditto, with Kodak Anastigmat lens, <i>f.</i> 7.7 . . . . .	25.50	29.50
Ditto, with B. & L. Auto shutter and R. R. lens . . . . .	25.50	
Black Sole Leather Case, with strap . . . . .	3.00	3.50
Combination Back for plates . . . . .	3.50	3.50

	No. 3 $3\frac{3}{4} \times 4\frac{1}{4}$	No. 3A $3\frac{1}{4} \times 5\frac{1}{2}$
Double Glass Plate Holders, each . . . . .	\$1.25	\$1.25
Autographic Film Cartridges, 12 exposures (No. A 118) for No. 3; .70		
10 exposures (No. A122) for No. 3A .70		
Ditto, 6 exposures . . . . .	.35	.40
Ditto, 2 exposures . . . . .	.15	.20
Kodak Portrait Attachment. (See page 39) . . . . .	.50	.50



SHOWING COMBINATION BACK

No. 1  
*Autographic KODAK, Special*



**H**ERE is a camera in which quality and speed are ingeniously combined. It is as small as is consistent with the utmost in lens and shutter efficiency.

Its lenses have sufficient length of focus to give the desirable perspective, and at the same time utilize the full speed at which they are listed.

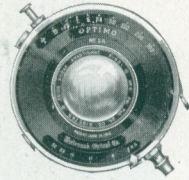
The shutter is large enough and fast enough to work in harmony with its high-speed lenses, without, in the least, impeding their speed.

Smaller cameras than the No. 1 *Special*, for  $2\frac{1}{4} \times 3\frac{1}{4}$  pictures, can be and have been made, but here, Kodak ingenuity has avoided the mistake of sacrificing for mere littleness the more desirable photographic results. This little Kodak, like any fine piece of mechanism, works with smoothness and precision—a thoroughly capable instrument that is optically

correct. The regular equipment is the Kodak Anastigmat lens, *f.* 6.3, and Optimo shutter, with cable release, highest speed  $\frac{1}{300}$  of a second, and variable speeds to one second, and it has also both "bulb" and time actions. Four other high-grade lens equipments are also listed.

It is quickly opened and extended, the focusing scale is easily adjusted for all distances, by a simple lever attachment. It has a brilliant, collapsible, reversible finder with revolving mask for correct composition of pictures in both vertical and horizontal positions.

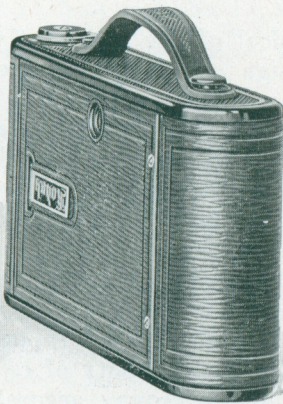
The camera is beautifully finished throughout and covered with the finest quality long grain calf; black leather bellows and highly nickeled trimmings.



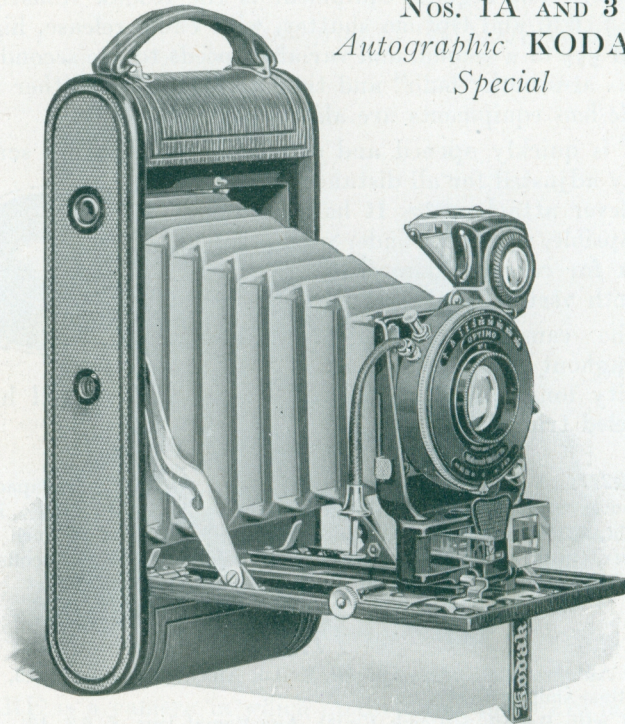
*Details* For rectangular pictures,  $2\frac{1}{4} \times 3\frac{1}{4}$  inches. Capacity, 6 exposures without reloading. Size of Kodak,  $1\frac{3}{8} \times 3\frac{3}{8} \times 6\frac{5}{8}$  inches. Weight,  $26\frac{1}{2}$  ounces. Lens, Kodak Anastigmat, *f.* 6.3,  $4\frac{3}{8}$ -inch focus. Shutter, Optimo with cable release. New, brilliant, reversible, collapsible finder. Two tripod sockets and new lever focusing device.

### Price

No. 1 Autographic Kodak, <i>Special</i> , Kodak Anastigmat lens, <i>f.</i> 6.3, Optimo shutter . . . . .	\$45.00
Ditto, with Bausch & Lomb Kodak Anastigmat lens, <i>f.</i> 6.3, $4\frac{3}{8}$ -inch focus . . . . .	53.50
Ditto, with Bausch & Lomb Special, Anastigmat lens, <i>f.</i> 6.3, $4\frac{5}{16}$ -inch focus . . . . .	43.00
Ditto, with Bausch & Lomb Tessar, Series IIb, <i>f.</i> 6.3, $4\frac{5}{16}$ -inch focus . . . . .	65.00
Ditto, with Bausch & Lomb Tessar, Series Ic, <i>f.</i> 4.5, $3\frac{1}{2}$ -inch focus . . . . .	67.00
Long Grain Leather, Velvet Lined Case, with strap . . . . .	3.25
Autographic Film Cartridge, 6 exposures, $2\frac{1}{4} \times 3\frac{1}{4}$ (No. A 120) . . . . .	.20
Ditto, 2 exposures . . . . .	.10
Kodak Portrait Attachment. (See page 39) . . . . .	.50



NOS. 1A AND 3  
*Autographic KODAKS,*  
*Special*



THESE *Special* Kodaks are typical of the best that is possible in efficiency, beauty in design and finish; in speed and accuracy in hand cameras. For a camera in the  $2\frac{1}{2} \times 4\frac{1}{4}$  or  $3\frac{1}{4} \times 4\frac{1}{4}$  size, equipped with the finest Anastigmat lenses, and a shutter speed capable of working harmoniously with the high-speed lenses, they meet every amateur requirement for quick, accurate results.

They are beautifully finished and covered with the finest long grain calf, and the best materials are used throughout in their construction.

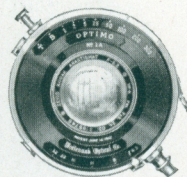
The big feature of the No. 1A is the Kodak Range Finder, permitting accurate focusing without the necessity of estimating the distances. High-speed lenses require accurate

focusing, and the Kodak Range Finder does this simply, quickly, and efficiently. No. 3 is not equipped with the Kodak Range Finder.

A choice is offered of the Kodak Anastigmat, *f.* 6.3 lens, and two other high-grade lenses. The shutter on each is the Optimo, operated either by cable or finger release, and in addition to the usual time and "bulb" actions, has eight variable speeds from one second to  $\frac{1}{300}$  of a second.

No. 3 will take plates by the addition of a Combination Back (supplied extra), but obviously the Autographic feature can be used only with Autographic films.

The fast lenses give the Specials a great advantage over the ordinary camera in dull lights, and the high-speed shutters make them second only to cameras having focal plane shutters for photographing rapidly moving objects.



The cameras have rising front; brilliant, collapsible, reversible finder with adjustable mask; rack and pinion for focusing, and the usual focusing scale.

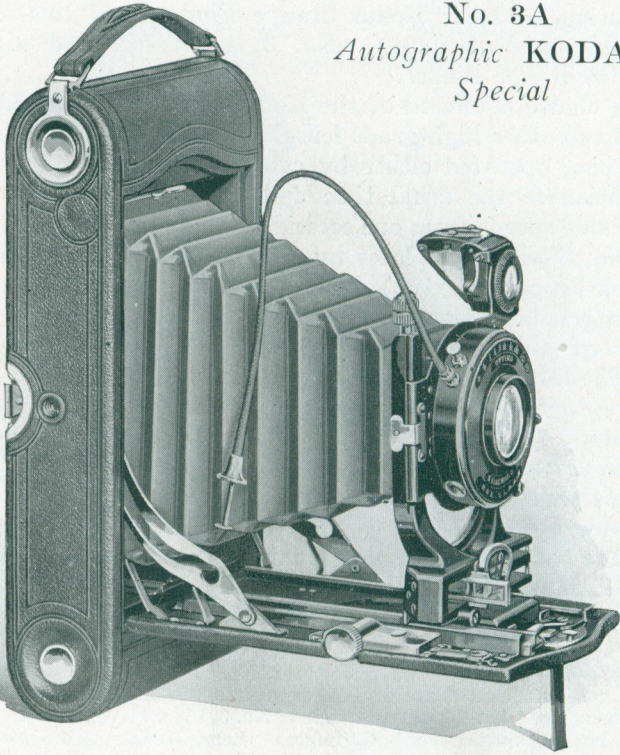
*Details* For rectangular pictures, No. 1A,  $2\frac{1}{2} \times 4\frac{1}{4}$  inches; No. 3,  $3\frac{1}{4} \times 4\frac{1}{4}$  inches. Capacity, 12 exposures without reloading. Size of Kodaks, No. 1A,  $1\frac{1}{8} \times 3\frac{3}{4} \times 8$  inches; No. 3,  $1\frac{1}{8} \times 4\frac{1}{2} \times 8$  inches. Weight, No. 1A, 32 ounces; No. 3, 32 ounces. Lens, Kodak Anastigmat, speed *f.* 6.3, focal length, No. 1A,  $5\frac{1}{16}$  inches; No. 3, 5 inches. Shutter, Optimo. Two tripod sockets. Brilliant reversible finder, with hood. Rack and pinion for focusing. Spirit level on No. 3.

### Prices

	No. 1A	No. 3
Autographic Kodak, <i>Special</i> , with Kodak Anastigmat lens, <i>f.</i> 6.3, Optimo shutter . . . . .	\$50.00	\$50.00
Ditto, with Bausch & Lomb Kodak Anastigmat, <i>f.</i> 6.3 lens, Optimo shutter . . . . .	59.50	59.50
Ditto, Bausch & Lomb Tessar Series IIb Anastigmat lens . . . . .	70.50	70.50
Grain Leather, Velvet Lined Case, with strap . . . . .	3.75	3.75
Combination Back . . . . .		4.00
Double Glass Plate Holders, each . . . . .		1.25
Autographic Film Cartridge, 12 exposures (No. A 116 for No. 1A; No. A 118 for No. 3) . . . . .	.50	.70
Ditto, 6 exposures . . . . .	.25	.35
Ditto, 2 exposures . . . . .	.12	.15
Kodak Portrait Attachment. (See page 39) . . . . .	.50	.50



No. 3A  
*Autographic KODAK,*  
*Special*

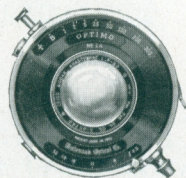


EVERY improvement that can possibly contribute to greater efficiency is incorporated in the *Specials*. In finish, in optical and mechanical attainments, they have maintained a leadership through their own perfections.

In 1915, the final touch seemed to have been added when they became autographic, but with the addition of the Kodak Range Finder, the 3A *Special* is without a peer in hand cameras. The long-focus and high-speed (large stop opening) lenses used with a camera of this size and type require accurate focusing. The Kodak Range Finder provides for such focusing, simply and efficiently, and means better results

and fuller value to the camerist from his high-speed lenses. Above all, 3A *Special* is optically efficient. The lenses are large (fast) and the focal length long in proportion to the size of the picture.

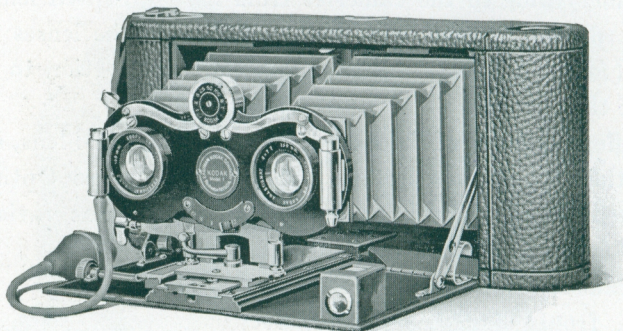
It offers a choice of the Kodak Anastigmat, *f.* 6.3 lens, and two other high-grade lenses. The shutter is the Optimo, operated either by cable or finger release, and has variable speeds from one second to  $\frac{1}{3000}$  of a second. The camera is made of aluminum, has rising front, and the usual focusing scale in addition to the Kodak Range Finder. It is richly finished in genuine Persian Morocco, has bellows of selected black leather, and metal parts are highly nickeled.



*Details* For rectangular pictures,  $3\frac{1}{4} \times 5\frac{1}{2}$  inches. Capacity, 10 exposures without reloading. Size of Kodak,  $2 \times 4\frac{3}{4} \times 9\frac{1}{2}$  inches. Weight, 42 ounces. Lens, Kodak Anastigmat, *f.* 6.3, focal length,  $6\frac{3}{4}$  inches. Shutter, Optimo with cable release. Two tripod sockets. Brilliant, collapsible, reversible view finder with adjustable window also Kodak Range Finder. Rack and pinion for focusing.

### Price

Autographic Kodak, <i>Special</i> , Kodak Anastigmat lens, <i>f.</i> 6.3, and Optimo shutter . . . . .	\$60.00
Ditto, with Bausch & Lomb Kodak Anastigmat lens, <i>f.</i> 6.3, $6\frac{3}{4}$ -inch focus . . . . .	76.25
Ditto, with Bausch & Lomb Tessar Series IIb Anastigmat lens, <i>f.</i> 6.3, $6\frac{7}{8}$ -inch focus . . . . .	91.50
Grain Leather, Velvet Lined Case, with strap . . . . .	4.25
Combination Back . . . . .	4.00
Double Glass Plate Holders, each . . . . .	1.25
Autographic Film Cartridge, 10 exposures (No. A 122) . . . . .	.70
Ditto, 6 exposures . . . . .	.40
Ditto, 2 exposures . . . . .	.20
Kodak Portrait Attachment. (See page 39) . . . . .	.50



## STEREO KODAK

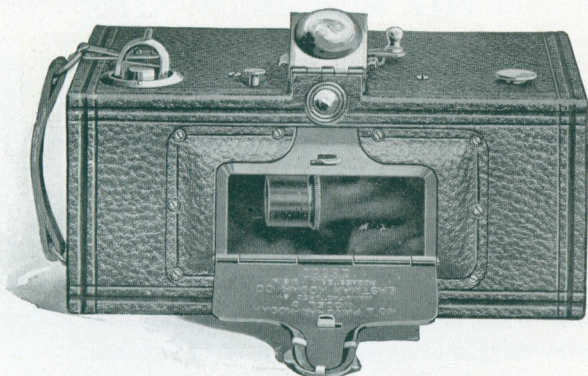
THE correct visual effect in a picture can only be obtained by the use of twin lenses, followed by viewing the twin pictures through a stereoscope. Such pictures give the full effect of depth, roundness, distance and perspective that we see with the eyes. There is no better camera for making such pictures than the Stereo Kodak.

The Stereo is supplied with carefully matched Kodak Anastigmat, *f.* 7.7 lenses of the best quality; the shutter is of the double valve automatic type, for retarded speeds from 1 to  $\frac{1}{100}$  of a second, also "bulb" and time exposures. The camera is equipped with rising front; rack and pinion for focusing, view finder and tripod socket. It is covered with fine seal grain leather and metal parts are in nickel and black enamel.

*Details* For standard Stereo size pictures. Capacity, 6 exposures without reloading. Size of Kodak,  $2\frac{3}{8} \times 4\frac{3}{4} \times 10\frac{1}{2}$  inches. Weight, 47 ounces. Lenses, Kodak Anastigmat, *f.* 7.7,  $5\frac{1}{8}$ -inch focus. Shutter, double valve, Stereo Automatic, with "bulb" release. Brilliant finder, tripod socket, rising front, rack and pinion for focusing and black leather bellows.

### Price

Stereo Kodak, Model No. 1, Kodak Anastigmat lenses, <i>f.</i> 7.7, and Stereo Automatic shutter . . . . .	\$50.00
Black Sole Leather Carrying Case . . . . .	4.00
N. C. Film Cartridge, 6 exposures, for Stereo (No. 101) . . . . .	.60
Ditto, 3 exposures for Stereo . . . . .	.30
Stereo Kodak Self-transposing printing frame. (See page 58) . . . . .	2.50
Kodak Portrait Attachment . . . . .	.50



## THE PANORAM KODAKS

THE Panoram Kodak does a special kind of work—a very desirable kind of work which cannot be done with a camera of any other type.

As its name implies, it is constructed so as to take panoramic pictures of outdoor groups, landscapes, mountain views, and the like.

Panoram Kodaks use the regular daylight loading N. C. Kodak film; they are carefully made, have genuine leather coverings and nickeled fittings.

The No. 1 has a scope of 112 degrees, while the No. 4 embraces an angle of 142 degrees. Panoram Kodaks cannot be used successfully indoors.

*Details* For rectangular pictures, No. 1,  $2\frac{1}{4} \times 7$  inches; No. 4,  $3\frac{1}{2} \times 12$  inches. Capacity, No. 1, 6 exposures; No. 4, 4 exposures without reloading. Size of Kodak, No. 1,  $3\frac{3}{8} \times 4\frac{3}{8} \times 7\frac{3}{8}$  inches; No. 4,  $4\frac{3}{4} \times 5\frac{7}{8} \times 10\frac{1}{8}$  inches. Weight, No. 1, 24 ounces; No. 4, 46 ounces. Lenses, specially selected as to quality and focal length. Shutter, Panoram. Two tripod sockets. Brilliant finder with hood, No. 1 uses No. 1 F. P. Kodak; No. 4, B. E. Film Cartridges, No. 4.

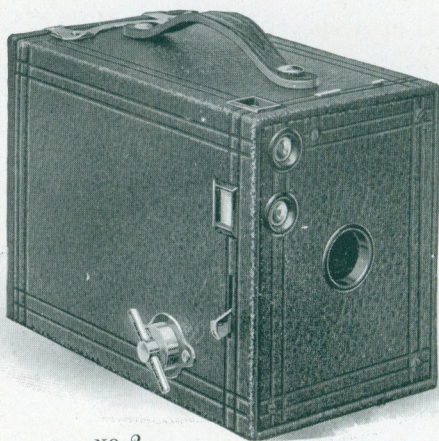
### Prices

	No. 1	No. 4
Panoram Kodak . . . . .	\$13.50	\$22.50
Black Sole Leather Carrying Case, with shoulder strap . . . . .	4.50	6.00
N. C. Film Cartridge, No. 1, 6 exposures, $2\frac{1}{4} \times 7$ (No. 105); No. 4, 4 exposures, $3\frac{1}{2} \times 12$ (No. 103) . . . . .	.40	.75
Ditto, 3 exposures . . . . .	.20	
Ditto, 2 exposures . . . . .		.45

## THE BOX BROWNIES

There are thousands of Brownie enthusiasts all over the world, who are making splendid pictures with these little box cameras. The idea of simplicity and reliability combined in an inexpensive camera, has stood the test of years, and they have proved a delight to those who have used them.

While the Brownies are especially popular among children on account of their simplicity, the fact they are so practical has caused them to be taken up by adults who wish to make pictures easily and at the minimum of expense.



NO. 2  
BROWNIE

## NOS. 0 AND 2 BROWNIES

The No. 0 Brownie makes the popular Vest Pocket size pictures,  $1\frac{5}{8} \times 2\frac{1}{2}$  inches, and the No. 2,  $2\frac{1}{4} \times 3\frac{1}{4}$  pictures. Both cameras are accurate, reliable, efficient and economical to operate and anybody can make good pictures with them from the start. They have the automatic shutter for snapshots and time exposures; the No. 0 with one stop and No. 2

with three stops. Each has carefully tested meniscus lens and view finders, for vertical and horizontal exposures.

*Details* Nos. 0 and 2 Brownies. For rectangular pictures, No. 0,  $1\frac{1}{8} \times 2\frac{1}{2}$  inches; No. 2,  $2\frac{1}{4} \times 3\frac{1}{4}$  inches. Capacity, No. 0, 8 exposures; No. 2, 6 exposures without reloading. Size of camera, No. 0,  $2\frac{5}{8} \times 3\frac{3}{8} \times 4\frac{1}{8}$  inches; No. 2,  $3\frac{1}{4} \times 4 \times 5\frac{5}{8}$  inches. Weight, No. 0, 8 ounces; No. 2, 13 ounces. Lenses, meniscus. Shutters, Eastman Rotary. Two finders.

## NOS. 2A AND 3 BROWNIES

All the box Brownies are fixed focus and consequently anyone can, with reasonable care, make excellent pictures with them. The No. 2A makes pictures  $2\frac{1}{2} \times 4\frac{1}{4}$  inches, while the No. 3 makes  $3\frac{1}{4} \times 4\frac{1}{4}$  pictures. Each has carefully tested meniscus achromatic lens, Eastman Rotary shutter with three stops, two view finders, and the No. 3 is supplied with two tripod sockets. Both cameras are covered with durable imitation leather covering, with metal parts nicked, and have the daylight-all-the-way feature of the Kodaks.

By the addition of a Kodak Portrait Attachment these cameras can be used with excellent success in home portraiture.

*Details* Nos. 2A and 3 Brownies. For rectangular pictures, No. 2A,  $2\frac{1}{2} \times 4\frac{1}{4}$  inches; No. 3,  $3\frac{1}{4} \times 4\frac{1}{4}$  inches. Capacity, 12 exposures without reloading. Size of camera, No. 2A,  $3\frac{1}{8} \times 5\frac{1}{8} \times 6\frac{1}{8}$  inches; No. 3,  $4\frac{3}{8} \times 5\frac{1}{8} \times 6\frac{1}{8}$  inches. Weight, No. 2A, 21 ounces; No. 3, 24 ounces. Lenses, meniscus achromatic. Shutters, Eastman Rotary with three stops. Two finders.

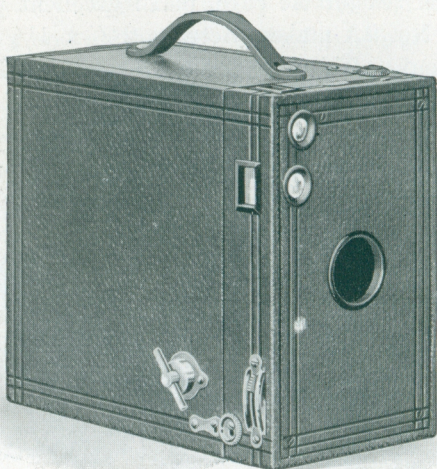
## Prices

	No. 0	No. 2	No. 2A	No. 3
Nos. 0 and 2 Brownie Cameras, meniscus lenses, Eastman Rotary shutters . . . . .	\$2.00	\$2.75		
Nos. 2A and 3 Brownie Cameras, meniscus achromatic lenses, Eastman Rotary shutters . . . . .			\$3.50	\$4.50
Brownie Carrying Case . . . . .	.75	1.00	1.00	1.25
N. C. Film Cartridge, 8 exposures, $1\frac{1}{8} \times 2\frac{1}{2}$ (No. 127) for No. 0 . . . . .	.20			
Ditto, 6 exposures, $2\frac{1}{4} \times 3\frac{1}{4}$ (No. 120) for No. 2 . . . . .		.20		
Ditto, 12 exposures, $2\frac{1}{2} \times 4\frac{1}{4}$ (No. 116) for No. 2A; $3\frac{1}{4} \times 4\frac{1}{4}$ (No. 124) for No. 3 . . . . .			.50	.70
Ditto, 6 exposures . . . . .			.25	.35
Kodak Portrait Attachment. (See page 39) . . . . .	.50	.50	.50	.50
Developing and Printing Outfit. (See page 44) . . . . .	1.00	1.75	1.75	1.75

## No. 2C BROWNIE

**BEHIND** the Brownie name stands years of practical experience in the best, most usable and most serviceable camera construction. And so, when it became evident that the  $2\frac{7}{8} \times 4\frac{7}{8}$  picture was to be one of the most popular amateur sizes, the No. 2C size was added to the box Brownie line.

The 2C has slightly more picture area than the No. 3 size, it fits the view, and its shape is adaptable to almost any composition. But, like the other Brownies, this new camera combines simplicity and reliability with low cost.



*Details* For rectangular pictures,  $2\frac{7}{8} \times 4\frac{7}{8}$  inches. Capacity, 10 exposures without reloading. Size of camera,  $1\frac{7}{8} \times 6\frac{1}{4} \times 7\frac{1}{4}$  inches. Weight, 27 ounces. Lens, meniscus achromatic. Shutter, Eastman Rotary, with 3 stops. Two view finders. Two tripod sockets. Covered with durable imitation leather.

### Price

No. 2C Brownie, with meniscus achromatic lens and Eastman Rotary shutter . . . . .	\$4.50
Brownie Carrying Case . . . . .	1.25
N. C. Film Cartridges, 10 exposures (No. 130) . . . . .	.60
Ditto, 6 exposures . . . . .	.35
Ditto, 2 exposures . . . . .	.15
Kodak Portrait Attachment. (See page 39) . . . . .	.50

It has a fine quality meniscus achromatic lens, or if desired, will be equipped with Rapid Rectilinear lens. The shutter is the Brownie Ball Bearing with cable release; has time and "bulb" actions and snap-shot speeds of  $\frac{1}{25}$ ,  $\frac{1}{50}$  and  $\frac{1}{100}$  of a second, and is supplied with Kodak Autotime Scale as an aid to correct exposure.

The camera loads in daylight with ten, six or two-exposure Autographic Film Cartridges (No. A 122); has an automatic focusing lock which permits the quick focusing of objects at any distance. Has reversible finder, two tripod sockets, carrying handle; is constructed of metal, covered with a fine quality imitation leather, bellows of black leather, nickel and black enamel fittings and is carefully made and finished throughout.



The No. 3A Folding Autographic Brownie is so simple to operate that anyone, without experience, can secure good results with it from the very start.

*Details* For rectangular pictures,  $3\frac{1}{4} \times 5\frac{1}{2}$  inches. Capacity, 10 exposures without reloading. Size of camera,  $1\frac{11}{16} \times 4\frac{5}{16} \times 9\frac{5}{16}$  inches. Weight, 38 ounces. Lens, meniscus achromatic. Also supplied with Rapid Rectilinear lens if desired. Shutter, Brownie Ball Bearing with cable release, also equipped with Kodak Autotime Scale. Reversible finder, two tripod sockets, automatic focusing lock, black leather bellows.

### Price

No. 3A Folding Autographic Brownie, meniscus achromatic lens and Brownie Ball Bearing shutter . . . . .	\$12.50
Ditto, with Rapid Rectilinear lens . . . . .	15.00
Carrying Case for No. 3A Folding Autographic Brownie . . . . .	1.40
Autographic Film Cartridge, 10 exposures, $3\frac{1}{4} \times 5\frac{1}{2}$ (No. A 122) . . . . .	.70
Ditto, 6 exposures . . . . .	.40
Ditto, 2 exposures . . . . .	.20
Kodak Portrait Attachment. (See page 39) . . . . .	.50



## KODAK BALL BEARING SHUTTER

**T**HIS shutter is automatic in its action and does not require setting. Its leaves work on ball bearings, giving it a smooth and reliable action, and as they open and close in a star-shape aperture, the maximum of light is admitted. It is operated by cable release or finger release and has the iris diaphragm.

The No. 0 Ball Bearing shutter as supplied with the Vest Pocket Kodak and No. 2 Folding Brownie, operates with finger release only, has speeds of  $\frac{1}{25}$  and  $\frac{1}{50}$  of a second and Autotime Scale. Fitted to the No. 1 Kodak Junior with meniscus achromatic and Rapid Rectilinear lenses, the No. 0 has cable release and not Autotime Scale.

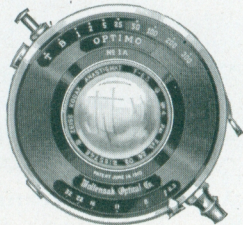
The No. 1 shutter has variable indicated speeds of  $\frac{1}{25}$ ,  $\frac{1}{50}$  and  $\frac{1}{100}$  of a second, and is regularly fitted to the No. 1A Kodak Junior, No. 2A Folding Brownie and Nos. 1A and 3 Kodaks, and with No. 1 Kodak Junior, with *f*. 7.7 lens.

The No. 2 shutter is fitted to Nos. 2C and 3A Kodak Juniors, No. 2C Folding Brownie and No. 3A Kodak. This has the same speeds as the No. 1 shutter but is larger. All have "bulb" and time actions.



## OPTIMO SHUTTER

**T**HE Optimo is one of the best and most accurate shutters for use with fast Anastigmat lenses. It has remarkable precision, smoothness, ease in action and sufficient speed to photograph rapidly moving objects. The Optimo is now supplied with all the *Specials*. In making an exposure, its five leaves revolve—opening and closing as well—in a star-shaped aperture. In addition to the usual "bulb" and time actions, the Optimo has eight indicated speeds varying from one second to  $\frac{1}{300}$  of a second. This thoroughly reliable shutter is of the setting type; cable and finger release, finished in nickel and black enamel, with the engraving in gold.



## KODAK LENSES

THE meniscus achromatic and Rapid Rectilinear lenses supplied with the regular models of the Kodaks and Brownie Cameras, are perfectly adapted to the everyday requirements of the average amateur, producing exceedingly good results under all normal conditions of light. They are the best lenses of their respective types that can be secured.

Since the introduction of the Kodak Anastigmat, *f.* 7.7 lenses, the use of Anastigmats has become very general. These *f.* 7.7 lenses are inexpensive, but they produce Anastigmat results. They are speedier than the fastest rectilinear lenses; in quality, depth, definition (sharpness) and flatness of field, they equal the best Anastigmats made. Their popularity is responsible for the Kodak Anastigmat, *f.* 6.3 lenses, which have the same high quality, and still greater speed.

For Kodak use, you cannot obtain better lenses than the Kodak Anastigmats, at any price.

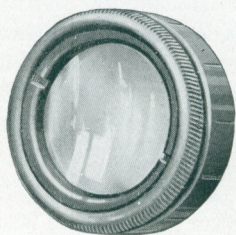
## AUTOGRAPHIC BACKS

THE Autographic feature may be added to the Kodak not originally equipped with this improvement. There is no extra charge for the Autographic Film and with the Autographic feature incorporated in the old Kodak, one may keep an authentic record of each exposure on the negative, to determine at any time, when and where each picture was made.

Autographic backs will be supplied for the Kodaks listed, at the following prices:

No. 1 Kodak Junior . . . . .	\$2.50
No. 1A Kodak Junior . . . . .	3.00
No. 1A Folding Pocket Kodak, Rapid Rectilinear Type . . . . .	3.50
No. 3 Folding Pocket Kodak . . . . .	3.50
No. 3A Folding Pocket Kodak . . . . .	3.75
No. 4 Folding Pocket Kodak . . . . .	4.00
No. 4A Folding Kodak . . . . .	4.50
No. 1A Special Kodak . . . . .	4.00
No. 3 Special Kodak . . . . .	4.00
No. 3A Special Kodak . . . . .	4.25

## KODAK PORTRAIT ATTACHMENT



**T**HERE are so many ways in which one can use a Kodak Portrait Attachment with a Kodak or Brownie Camera, that it is almost an indispensable accessory. If an object appears too small with the regular lens equipment, it may be shown much larger by using the Kodak Portrait Attachment in accordance with the directions. They

are not only serviceable for making portraits, but also for photographing any small objects, such as flowers or fruits; in fact, almost anything at close range.

One can work up close to the subject and thereby secure bust portraits as large as the size of the negative will permit. The attachment is simply an extra lens, which fits over the barrel of the regular lens. This does not alter the exposure nor affect the operation of the instrument in any way, except to make the lens cut sharply when close to the subject, thereby giving a larger image.

Please order by number, or if required for older models or cameras with special equipments, specify shutter and size of camera.



MADE WITH KODAK AND KODAK  
PORTRAIT ATTACHMENT

### Prices—KODAK PORTRAIT ATTACHMENTS

No. 1. For Nos. 0 and 2 Brownies, and Vest Pocket Autographic Kodak with single lens . . . . .	\$0.50
No. 2. For No. 2A Brownie . . . . .	.50
No. 3. For No. 1A Autographic Kodak Junior, both single and double lenses; Nos. 1A and 3 Autographic Kodaks, with double lenses; No. 2A Folding Autographic Brownie, both single and double lens, and No. 1 Kodak Junior with Kodak Anastigmat, <i>f. 7.7</i> lens . . . . .	.50
No. 4. For Nos. 2C and 3 Brownies . . . . .	.50
No. 5. For Nos. 2C and 3A Autographic Kodak Juniors, both single and double lenses, Nos. 2C and 3A Folding Autographic Brownies, both single and double lenses and No. 3A Autographic Kodak . . . . .	.50
No. 6. For Nos. 1A and 3 Autographic Kodaks, <i>Special</i> , Nos. 1A and 3 Autographic Kodaks with Kodak Anastigmat, <i>f. 7.7</i> lens, and No. 1 Autographic Kodak, <i>Special</i> . . . . .	.50
No. 7. For No. 3A Autographic Kodak, <i>Special</i> , No. 3A Autographic Kodak and Nos. 2C and 3A Juniors with Kodak Anastigmat, <i>f. 7.7</i> lenses, and Stereo Kodak, Model 1 . . . . .	.50
No. 8. For No. 1 Autographic Kodak Junior, both single and double lenses, Vest Pocket Autographic Kodak, <i>Special</i> , Vest Pocket (regular) with Rapid Rectilinear lens, and No. 2 Folding Autographic Brownie, both single and double lenses . . . . .	.50
No. 9. For No. 3 Autographic Kodak with B. & L. Automatic shutter . . . . .	.50
No. 13. For No. 1A Autographic Kodak Junior, with Kodak Anastigmat lens, <i>f. 7.7</i> (with engraving on front of lens barrel) . . . . .	.50

### KODAK SKY FILTERS AND COLOR FILTERS

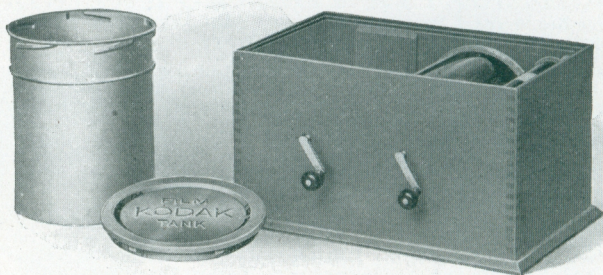
The Sky Filter is intended to equalize the great difference of light between the sky and foreground in landscape photography. Only the upper half of the filter is stained a yellow color to relieve the brightness from the sky, while the lower half of the filter being colorless, permits a normal exposure for the foreground.

The Kodak Color Filters are of great value in outdoor photography, and for all subjects embracing colors which act weakly on the sensitive film, as they hold back the strong blue and violet rays, affording the weaker colors time to record.

The Kodak Sky Filters and Color Filters are mounted in the same manner as the Kodak Portrait Attachments.

### Prices—KODAK SKY FILTERS AND COLOR FILTERS

No. 1. For Vest Pocket, Autographic Kodak with single lens; Nos. 0 and 2 Brownies . . . . .	\$0.50
No. 2. For No. 2A Brownie . . . . .	.50
No. 3. For No. 1A Autographic Kodak Junior, both single and double lens; Nos. 1A and 3 Autographic Kodaks, with double lenses; No. 2A Folding Autographic Brownie, both single and double lens, and No. 1 Kodak Junior with Kodak Anastigmat, <i>f. 7.7</i> lens . . . . .	.75
No. 4. For Nos. 2C and 3 Brownies . . . . .	.75
No. 5. For Nos. 2C and 3A Autographic Kodak Juniors, both single and double lenses; Nos. 2C and 3A Folding Autographic Brownies, both single and double lenses and No. 3A Autographic Kodak . . . . .	1.00
No. 6. For Nos. 1A and 3 Autographic Kodaks, <i>Special</i> , Nos. 1A and 3 Autographic Kodaks with Kodak Anastigmat <i>f. 7.7</i> lenses, and No. 1 Autographic Kodak, <i>Special</i> . . . . .	.75
No. 7. For No. 3A Autographic Kodak, <i>Special</i> , Nos. 3A Autographic Kodak and 2C and 3A Juniors with Kodak Anastigmat, <i>f. 7.7</i> lenses, and Stereo Kodak, Model 1 . . . . .	1.00
No. 8. For No. 1 Autographic Kodak Junior, both single and double lens, Vest Pocket Autographic Kodak, <i>Special</i> , Vest Pocket (regular) with Rapid Rectilinear lens, and No. 2 Folding Autographic Brownie, both single and double lens . . . . .	.50
No. 9. For No. 3 Autographic Kodak with B. & L. Automatic shutter . . . . .	.50
No. 13. For No. 1A Autographic Kodak Junior, with Kodak Anastigmat lens, <i>f. 7.7</i> (with engraving on front of lens barrel) . . . . .	.75



## KODAK FILM TANK

**T**HE Kodak Film Tank automatically develops every roll of film just as well as that roll of film could be developed by the most experienced photographer. If directions are followed, if the chemicals are mixed and the temperature regulated according to instructions, a boy or girl can get just as good results from the Kodak Film Tank as can an expert by any method.

In other words, every roll of film put into the film tank, where the simple directions are implicitly followed, will come out developed as well, or better, than that roll of film could be developed in the dark room by the most experienced photographer. And it is very simple, it eliminates the dark room entirely, developing the film in broad daylight, and is so compact as to be easily carried and used anywhere.

The Kodak Film Tank consists of a winding box, a light-proof apron, and a heavily nickeled brass solution cup with cover. In the Brownie Film Tank, however, no cover is necessary as the film roll itself is turned. All articles can be packed in the box, making the entire outfit self-contained.

The film to be developed is placed upon a reel in the winding box, the cover is placed on the box and the film is wound around an axis in combination with the apron, in such fashion that, when completely wound, the apron protects the film effectually from light, and may be removed from the winding box safely at any time. It is then lowered into the cup of developer, the cover attached and the film left to develop for about twenty minutes. After development the film is removed for fixing.

Every step is performed in daylight and the exact time necessary for development, in combination with the chemical formula, has been scientifically worked out, so that all differences of exposure within reasonable bounds are taken care of. Especial attention is called to the 3½-inch size, for the development of the new 2C size films.

Those who wish to develop more than one roll at a time can do so without purchasing extra tanks complete, by securing duplicating outfits as listed below.

### *Prices*

Brownie Kodak Film Tank, for use with No. 1, No. 2 and No. 2 Folding Pocket Brownie cartridges, complete . . . . .	\$2.75
Cover for same . . . . .	.25
Spool Adapter, for Vest Pocket Kodak Film . . . . .	.10
Vest Pocket Kodak Film Tank, for Vest Pocket cartridges, complete . . . . .	2.75
2½-inch Kodak Film Tank, for use with all Kodak or Brownie cartridges having a film width 2½ inches or less, complete . . . . .	4.00
3½-inch Kodak Film Tank, for use with all Kodak and Brownie cartridges having a film width of 3½ inches or less, complete . . . . .	5.50
5-inch Kodak Film Tank, for use with all Kodak and Brownie cartridges having a film width of 5 inches or less, complete . . . . .	6.50
7-inch Kodak Film Tank, for use with No. 5 Cartridge Kodak or shorter film cartridges, complete . . . . .	8.00
Duplicating Outfit, consisting of one solution cup, one transferring reel, and one apron, for Brownie Kodak Film Tank . . . . .	1.40
Ditto, for Vest Pocket Film Tank . . . . .	1.40
Ditto, for 2½-inch Kodak Film Tank . . . . .	2.00
Ditto, for 3½-inch Kodak Film Tank . . . . .	2.75
Ditto, for 5-inch Kodak Film Tank . . . . .	3.25
Ditto, for 7-inch Kodak Film Tank . . . . .	4.00
*Kodak Tank Developer Powders for Brownie Kodak Film Tank, per package, ½ dozen . . . . .	.15
Ditto, for Vest Pocket Tank . . . . .	.15
Ditto, for 2½-inch tank, per package, ½ dozen . . . . .	.20
Ditto, for 3½-inch tank, per package, ½ dozen . . . . .	.20
Ditto, for 5-inch tank, per package, ½ dozen . . . . .	.25
Ditto, for 7-inch tank, per package, ½ dozen . . . . .	.25
*Kodak Acid Fixing Powder, per ¼-pound package . . . . .	.10
Ditto, per ½-pound package . . . . .	.15
Ditto, per 1-pound package . . . . .	.25

\*Prices are subject to change without notice.

## No. 2 BROWNIE DEVELOPING BOX

THE Brownie Developing Box is a simplified and modified form of the Kodak Film Tank, offering the same assurance of perfectly developed film, and at the same time is so simple that any boy or girl can readily understand and operate it.

It consists of a metal box with cover, just long enough to accommodate a roll of No. 1 or No. 2 Brownie Film in one loop.

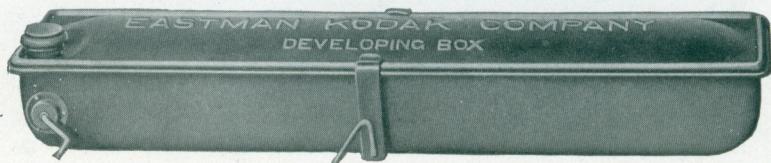
To develop, the roll of film is inserted in the spool carrier, and by means of a cord and winding shaft the film is unrolled and carried around a roller bearing, thus exposing the film to the action of the developer.

Before unrolling the film, the developer is poured in the box and the cover put in place; all these operations being performed in daylight. The film is then unrolled by turning the crank, when the box is rocked on its standard for six minutes. The developer is then poured off and box filled with water to wash out developer, after which film is removed and fixed in daylight.

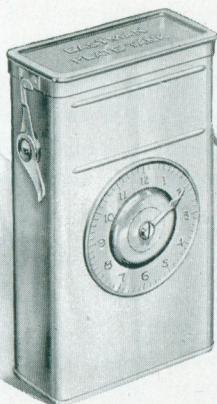
It provides an excellent means for those who have No. 1 or No. 2 Brownie Cameras, of developing their films simply and accurately.

### *Price*

No. 2 Brownie Developing Box . . . . .	\$1.50
Brownie Developing Box Powders, per package of 6. . . . .	.15
Kodak Acid Fixing Powders, ½-pound package . . . . .	.15
Ditto, ¼-pound package . . . . .	.10



## EASTMAN PLATE TANK



WHAT the film tank has done for films, the plate tank does for plates. The idea of the two tanks is based upon the same time and temperature system of development, with, of course, such differences in actual construction of the tanks as are required by the physical differences between films and plates. And as plates must be unloaded in a dark room, the plate tank cannot offer the advantage of daylight quite all the way, but it takes only a few moments in the dark room to load this tank, after which it may be brought out into any light for development.

The device consists of a metal solution cup with cover, a cage for holding 12 or less plates, and a loading fixture for loading the plates in the cage.

The exposed plates are loaded into the cage and placed in the tank, which has been filled with developer, in the dark room and the tank cover fastened in place. On the front of the tank is a dial for registering time. Development is allowed to continue for fifteen minutes, the tank being reversed several times. After development, the developer is washed out of the plates, and the fixing and washing are done in the usual manner.

### Price

Eastman Plate Tank, for 4 x 5, 3¼ x 5½, and smaller plates, includes solution cup, plate cage, loading fixture and adjustable kit . . . . .	\$4.00
Ditto, 5 x 7, without kit . . . . .	5.00
Adjustable Kit, for 4 x 5 or 3¼ x 5½ tank, to take smaller plates . . . . .	.60
Separate Kits, for 5 x 7 tank, to take 3¼ x 5½, 4¼ x 6½ or 4¾ x 6½ plates, each . . . . .	1.00
Metal Insert, for 5 x 7 tank, to take 4 x 5 plates . . . . .	.15
*Eastman Plate Tank Developer Powders, for 4 x 5 tank, per package, ½ dozen . . . . .	.20
Ditto, for 5 x 7 tank, per package, ½ dozen . . . . .	.40
*Kodak Acid Fixing Powder, per 1-pound package . . . . .	.25
Ditto, per ½-pound package . . . . .	.15

\*Prices are subject to change without notice.



## DEVELOPING AND PRINTING OUTFITS

FOR those who wish to develop by the dark room method we offer complete developing and printing outfits containing everything necessary for the work. By combining a variety of different articles and making up the outfits in large quantities, we furnish them at a much lower price than if the articles were purchased separately. The Eastman 3A Outfit contains every requisite for finishing twenty-four  $3\frac{1}{4} \times 5\frac{1}{2}$  or smaller pictures, and includes the following:

One Kodak Candle Lamp . . . . .	\$0.25
One Printing Frame . . . . .	.30
One Glass for Frame . . . . .	.05
One 4-ounce Graduate . . . . .	.20
One Stirring Rod . . . . .	.05
Four Developing Trays. . . . .	.40
Five tubes Eastman Special Developer . . . . .	.25
One-half pound Kodak Acid Fixing Powder . . . . .	.15
One package Potassium Bromide . . . . .	.10
Two dozen $3\frac{1}{4} \times 5\frac{1}{2}$ Velox Paper . . . . .	.30
Three Eastman M. Q. Powders for developing Velox. . . . .	.19
Instruction Book (free)	
	<hr/>
	\$2.24

Eastman 3A Outfit, complete, neatly packed, \$1.75.

EASTMAN'S A B C OUTFIT, similar to above but providing for 4 x 5 or smaller pictures . . . . . \$1.75

No. 0 BROWNIE Developing and Printing Outfit, complete, for developing and printing 24 pictures  $1\frac{5}{8} \times 2\frac{1}{2}$ . Price, complete. 1.00



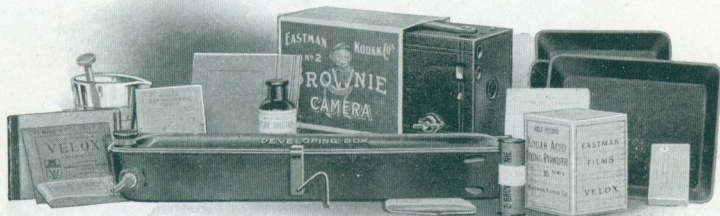
## THE KODAK BOX No. 2

THE Kodak Box No. 2 contains everything for picture making by the daylight method. No dark room is necessary, and even the beginner can get good results by following the simple, explicit directions contained in the instruction book. This outfit is simple enough for boys and girls, while at the same time it will make pictures which will please the grown-up people.

### *Price*

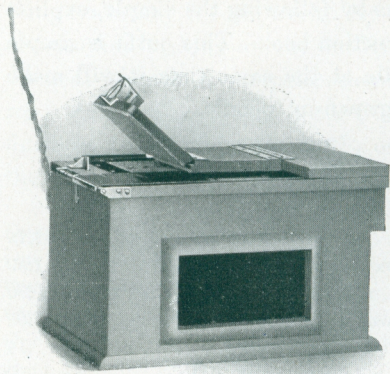
One No. 2 Brownie Camera, $2\frac{1}{4} \times 3\frac{1}{4}$ . . . . .	\$2.75
One No. 2 Brownie Developing Box . . . . .	1.50
One Roll No. 2 Brownie Film, $2\frac{1}{4} \times 3\frac{1}{4}$ . . . . .	.20
Two Brownie Developing Box Powders . . . . .	.05
One $\frac{1}{2}$ -pound package Kodak Acid Fixing Powder . . . . .	.15
One 4-ounce Graduate . . . . .	.20
One Stirring Rod. . . . .	.05
One No. 2 Brownie Printing Frame . . . . .	.20
One Package (one dozen) $2\frac{1}{4} \times 3\frac{1}{4}$ Velox . . . . .	.10
Two Eastman M. Q. Powders . . . . .	.13
Three Paper Developing Trays . . . . .	.30
One dozen $2\frac{1}{4} \times 3\frac{1}{4}$ Mounts . . . . .	.15
One dozen $2\frac{1}{4} \times 3\frac{1}{4}$ Kodak Dry Mounting Tissue . . . . .	.05
One Instruction Book (free).	
	\$5.83

Price, complete, neatly packed, \$5.00



## THE KODAK AMATEUR PRINTER

THE Printer consists of a box with a removable top, and in it a glass window through which the printing is done. Prints may be made with white margins, any size from  $1\frac{5}{8} \times 2\frac{1}{2}$  to  $4 \times 5\frac{1}{2}$

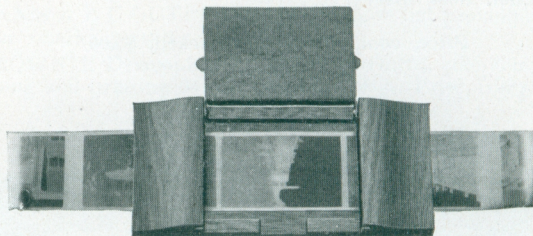


inches, by a simple automatic masking device, which holds the negatives firmly until released. Within the box is a small red electric bulb to permit the adjustment of negative and paper, and provision is made for a 60 Watt Mazda lamp, which is automatically turned on when the hinged frame is closed to make the exposure.

In the side of the box is a removable window, covered with red and orange paper, serving as a dark-room lamp for developing-out and bromide papers. It is supplied complete, without lamp, but including  $5\frac{1}{2}$  feet of electric light cord and socket.

The Kodak Amateur Printer . . . . . \$6.00

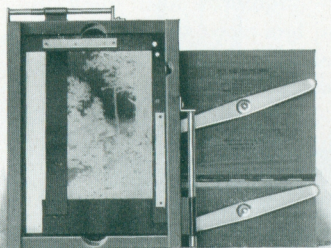
## KODAK SERIAL PRINTING FRAME No. 2



The Serial Printing Frame will be found a great convenience for printing from Vest Pocket Kodak negatives. After development, the film is left in a continuous strip (without cutting), and the frame is so designed as to permit the film to slide easily through the frame from exposure to exposure. The film and paper are firmly held during printing, by a tension spring.

Kodak Serial Printing Frame No. 2 for V. P. negatives only . . \$ .65

## KODAK AUTO-MASK PRINTING FRAME



The new Auto-Mask is the most convenient and useful thing in printing frames that has yet been produced. It is adaptable to the printing of negatives of any amateur size, from 4 x 5, 3 1/4 x 5 1/2 and smaller, using the same simple masking device employed on the Kodak Amateur Printer. The negative is held firmly in place by the mask and is as readily released, when desired, by a slight pressure on the thumb lever.

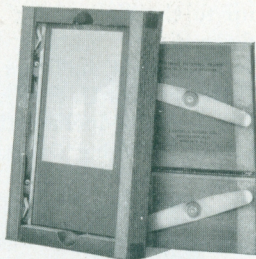
Any number of uniformly masked prints may be made without changing the position of the negative, and if desired, prints may be so made that white space is left at the side or bottom for writing as, for example, with post-cards. The graduated scales attached to the stationary guides, aid in sizing and holding exact dimensions of mask openings.

Kodak Auto-Mask Printing Frame . . . . \$1.25

## "MASKIT" PRINTING FRAME

The new Kodak "Maskit" Printing Frame is designed to overcome the difficulty of the negative and mask slipping on the glass, and to secure prints with a uniform white margin. Both negative and mask are held firmly, thus obviating the necessity of gumming.

Kodak "Maskit," 3 1/4 x 4 1/4, opens two-thirds . \$0.40  
 Kodak "Maskit," 3 1/4 x 5 1/2, opens two-thirds . .45  
 Kodak "Maskit," 5 x 7, opens two-thirds . .50



## KODALOID PRINTING MASKS

These transparent, orange color masks are intended for use with "Maskit" Printing Frames. Supplied in sets of three, each with different size opening.

Per set of 3, 3 1/4 x 4 1/4, \$0.25 Per set of 3, 3 1/4 x 5 1/2, \$0.30 Per set of 3, 5x7, \$0.40  
 Black paper masks, same sizes as above. Price, per set of three, \$0.12

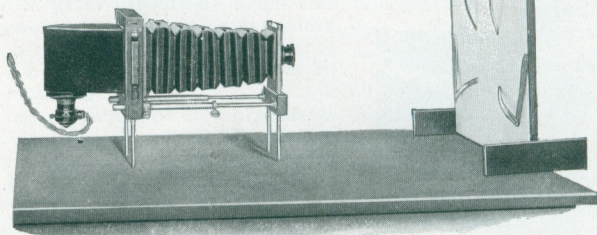
## EASTMAN PRINTING MASKS

Made of transparent Kodaloid, to fit the regular 3A and 4 x 5 Printing Frames, in 7 masking sizes. Price, each, 6 cents.

## PRINTING FRAMES

Eastman 3 1/2 x 12, for No. 4 Panoram Kodak, opens in three sections . . . . .	\$0.75	Brownie Printing Frame, No. 2 for 2 1/4 x 3 1/4 Developing paper only . . . . .	\$0.20
Eastman 2 1/4 x 7, for No. 1 Panoram Kodak, opens in two sections . . . . .	.30	Eastman, for film negatives 3 1/2 x 3 1/2, 3 1/4 x 4 1/4, opens two-thirds, each . . . . .	.30
Brownie Printing Frame, No. 1, for 2 1/4 x 2 1/4 Developing paper only . . . . .	.20	Ditto, 3 1/4 x 5 1/2, for films, opens two-thirds . . . . .	.30
		Ditto, for plates . . . . .	.35
		Eastman 4x5, opens two-thirds . . . . .	.30
		Eastman 5x7, opens two-thirds . . . . .	.40

## KODAK ENLARGING OUTFIT



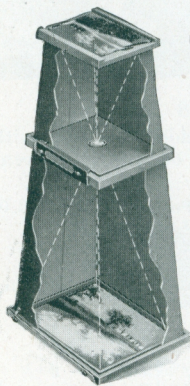
**T**HE Kodak Enlarging Outfit is just what the amateur needs, who is doing his own enlarging. Although it is small in size and so compact as to be easily stored, it is a thoroughly practical instrument and capable of almost unlimited results.

Films and plates of any size up to 4 x 6 inches, may be enlarged up to the size of the easel (14 x 17 inches), or even larger if desired.

The outfit includes Enlarging Camera, lens and diaphragm (largest stop U. S. 4), easel, lamphousing, light cord and socket, but does not include the 60 watt mazda electric light bulb.

Kodak Enlarging Outfit . . . . . \$18.00

### BROWNIE ENLARGING CAMERA



**T**HE Brownie Enlarging Camera consists of a light-tight cone, made in two sections, with an attachment at the small end to hold the negative, and another at the large end for the paper. The lens is supported between negative and paper at just the proper focal distance.

The cameras, with the exception of the No. 2 Brownie Post-card, are collapsible, so that they fold flat and may be conveniently carried in a suitcase.

- No. 2 Brownie Post-card Enlarging Camera, for 3 1/4 x 5 1/2 enlargements from 2 1/4 x 3 1/4 negatives . . . \$2.50
- No. 2 Brownie Enlarging Camera, for 5x7 enlargements from 2 1/4 x 3 1/4 negatives . . . . . 3.00
- No. 3 Ditto, for 6 1/2 x 8 1/2 enlargements from 3 1/4 x 4 1/4 negatives . . . . . 4.00
- No. 4 Ditto, for 8 x 10, 6 3/8 x 10 and 5 3/8 x 9 3/8 enlargements from 4x5, 3 1/4 x 5 1/2 and 2 7/8 x 4 1/2 negatives, respectively . . . . . 4.50

### V. P. KODAK ENLARGING CAMERA

This is made upon the same principle as the Brownie Enlarging Camera, excepting that being small in itself, it is not made collapsible and is in one section only.

It offers the simplest means for making 3 1/4 x 5 1/2 enlargements from 1 5/8 x 2 1/2 negatives.

Vest Pocket Kodak Enlarging Camera . . . . . \$2.50

## VELOX PAPER

Velox is a developing-out paper that prints in any light, requires no dark room and permits the amateur to utilize his evening hours in print making. Its simplicity of manipulation, and variety of grades and surfaces, make it especially suitable for all amateur requirements.

Velox is divided broadly into three kinds of paper, called "Contrast," "Regular" and "Special," each division containing a variety of surfaces. "Contrast" and "Regular" papers develop quickly and are best suited for negatives lacking contrast. "Special" papers develop slowly, and give soft effects from hard negatives.

Velox "Contrast" is made in Velvet (semi-gloss) single weight only. Contrast Velox will secure the best possible results from extremely thin or from dense flat negatives.

Velox "Regular" has the following surfaces: Carbon (matte), Glossy, Glossy double weight, Velvet, Velvet double weight. Velvet is recommended for very flat negatives and gives semi-gloss prints of exceptional quality.

In the "Special" class, the surfaces are Carbon (matte), Portrait (smooth matte), Portrait double weight, Glossy, Glossy double weight, Velvet, and Velvet double weight. Special Velvet Velox has a greater range than any of the other "Special" papers.

Royal Velox is coated on an India tint stock in "Regular" and "Special," in one surface, and just rough enough to produce soft, mellow-tinted prints.

### Price

Size	Single Weight			Double Weight		
	Dozen	½ Gross	Gross	Dozen	½ Gross	Gross
1½ × 2½	\$0.10	\$0.60	\$1.00	\$0.15	\$0.75	\$1.25
2¼ × 3¼	.10	.60	1.00	.15	.75	1.25
2½ × 4¼	.12	.70	1.25	.18	.90	1.55
3½ × 3½	.15	.80	1.50	.20	1.00	1.90
3¼ × 4¼	.15	.80	1.50	.20	1.00	1.90
2¾ × 4¾	.15	.80	1.50	.20	1.00	1.90
3¼ × 5½	.15	.80	1.50	.20	1.00	1.90
4 × 5	.20	1.10	2.00	.25	1.40	2.50
*3¾ × 6½	.20	1.10	2.00			
†3⅞ × 6	.20	1.10	1.95			
2¼ × 7	.15	.80	1.50	.20	1.00	1.90
4¼ × 6½	.30	1.65	2.80	.40	2.05	3.50
5 × 7	.35	2.00	3.50	.45	2.50	4.40
3½ × 12	.45	2.50	4.50	.55	3.15	5.65
Velox Post-cards, 3½ × 5½, furnished in Regular Velvet, Special Velvet, Special Portrait, Regular Glossy, Special Glossy and Regular Royal and Special Royal				.20	1.10	2.00
Ditto, Double Post-cards 3½ × 11 inches				.40	2.20	4.00
Brownie Post-cards, 2¼ × 4¼, Regular and Special Velvet				.15	.80	1.50

\*Glossy only (for use in Stereo Brownie Printing Frame).

†For use in Stereo Kodak Self-transposing Printing Frame.

## VELOX SUNDRIES

N. A. (Non-abrasion Velox) Liquid Developer, 4-ounce bottle (makes 16 ounces for Special, Regular or Contrast) . . . . .	\$0.38
Ditto, 16-ounce bottle . . . . .	1.15
Nepera Solution, per 4-ounce bottle . . . . .	.30
Ditto, per 16-ounce bottle . . . . .	.90
Nepera Auxiliary Powders (for converting Nepera solution to a film or plate developer), per package 1 dozen . . . . .	.35
*Velox Re-developer for Sepia Tones, per 4-ounce bottle . . . . .	.50
*Ditto, 2 ounces (sufficient for 150 4 x 5 prints) . . . . .	.30
Velox Re-developer Tubes, for sepia toning, per package 12 tubes. . . . .	.85
Velox Liquid Hardener, per 4-ounce bottle . . . . .	.15
Ditto, 8-ounce bottle . . . . .	.25
Kodak N. A. M. Q. Developer, per package 3 tubes . . . . .	.38
Kodak Acid Fixing Powder for fixing Velox Prints, per pound . . . . .	.25
Ditto, ½ pound . . . . .	.15
Ditto, ¼ pound . . . . .	.10

Prices subject to change without notice.

\*Package also includes bleaching agent.

## EASTMAN PERMANENT BROMIDE PAPERS

Following are the descriptions of the several grades and surfaces.

“VELVET” has a semi-gloss surface which gives to the shadows of the enlarged pictures a pleasing brilliance.

“BRILLIANT VELVET” is a duplicate of the original Velvet so far as surface is concerned, but the emulsion gives a high degree of contrast.

“STANDARD” is made in three grades, as follows: A—thin smooth; B—heavy smooth; C—heavy rough. A natural surface stock is used which lends itself to special finishing in oils, water colors, crayon or pastel work.

“MATTE-ENAMEL” produces prints with rich velvety blacks on a smooth, matte surface, tinted just enough to lend warmth to the highlights and half-tones.

“ENAMELED” has a high glossy surface; medium weight stock.

“ROYAL” is offered in two surfaces, Smooth and Rough, on a medium weight buff colored stock. Royal is the favorite paper for Sepia enlargements, in which it gives prints of unsurpassed richness and tone.

## EASTMAN BROMIDE PAPERS

Size	Per Doz.	Size	Per Doz.	Size	Per Doz.
5 x 7	\$0.35	8 x 10	\$0.80	14 x 17	\$2.40
5 x 8	.40	10 x 12	1.20	16 x 20	3.20
6½ x 8½	.60	11 x 14	1.60	18 x 22	4.00

Bromide Post Cards for enlargements from V. P. K. and 2¼ x 3¼ film negatives by means of the V. P. K. Enlarging Camera and the No. 2 Brownie Post Card Enlarging Camera may be had in two surfaces—Matte and Glossy—price 20 cents per dozen.

### SOLIO PAPER

A rapid, glossy, printing-out paper

Size	Per Package, 2 Doz.	Size	Per Package, 2 doz.
1½ x 2½	\$0.20	2¼ x 7 (No. 1 Panoram Kodak)	\$0.25
2¼ x 3¼	.20		Per Doz.
2½ x 4¼	.20	4¼ x 6½	\$0.25
3½ x 3½	.20	5 x 7	.30
3¼ x 4¼	.20	3½ x 12 (No. 4 Panoram Kodak)	.35
2¾ x 4¾	.20	Post-cards	.15
3¾ x 5½	.25	Double Solio Post-cards	.30
4 x 5	.25	Brownie Post-cards, 2¾ x 4¼	.10

Solio Toning and Fixing Powders, per carton, 5 tubes, 25 cents. Solio Combined Toning and Fixing Solution, per 8-ounce bottle, 50 cents. Ditto, 4-ounce bottle, 30 cents; post-paid, 50 cents. Solio Hardener, per 8-ounce bottle, 35 cents.

### KODAK DRY MOUNTING TISSUE

Mounts prints even on thin mounts without curl. The simplest method of mounting, no apparatus being required—just fix the tissue on print, lay on mount and press with a warm flat iron; no sticky fingers, no muss of any kind.

#### PRICE

Size, 3½ x 3½, 3 dozen. . . \$0.12	Size, 4 x 5, 2 dozen. . . \$0.12
Size, 3¼ x 4¼, 3 dozen. . . .12	Size, 4¼ x 6½, 1 dozen. . . .12
Size, 3¼ x 5½, 2 dozen. . . .12	Size, 5 x 7, 1 dozen. . . .12

### GLASS DRY PLATES

Seed and Royal Brands

Size	Per Doz.	Size	Per Doz.
3½ x 3½	\$0.35	Royal Lantern Slide Plates,	
3¼ x 4¼	.45	3¼ x 3¼	\$0.35
3¼ x 5½	.65	Lantern Slide Plates, 3¼ x 4	.45
4 x 5	.65	Cover Glass for Lantern Slides,	
4¼ x 6½	.90	3¼ x 3¼	.35
5 x 7	1.10	Ditto, 3¼ x 4	.40

Lantern Slide Binders, per package, 50 strips . . . \$0.10



## ALBUMS

### KODAK

One piece black narrow grained cowhide—leather lined. Leaves held in place by black silk cord through cover and metal tubes. Very flexible—Oxford Bible style edges.

No.	Size of leaf	Price each	No.	Extra leaves, per package of 12
A . . . . .	4 $\frac{1}{4}$ x 7 . . . . .	\$3.75	A . . . . .	\$.15
B . . . . .	7 x 11 . . . . .	5.50	B . . . . .	.18

### HERCULES

This is one of the most attractive albums ever offered. The covers are flexible leather of a new blended grey and black shade. Has a flap and clasps, holding the album flat when filled; fitted with large pocket for loose prints; 50 black leaves, bound inside of covers by silk cord.

No.	Size of leaf	Price each	No.	Extra leaves, per package of 12
GA . . . . .	5 x 8 . . . . .	\$3.75	GA . . . . .	\$.18
GB . . . . .	7 x 11 . . . . .	4.75	GB . . . . .	.25
GC . . . . .	10 x 12 . . . . .	6.50	GC . . . . .	.50
GD . . . . .	9 x 14 . . . . .	7.25	GD . . . . .	.60

### TROJAN

Made of finest quality flexible, embossed leather, with bronze finish. Black silk cloth pocket for loose prints. Contains 50 jet black leaves of extra quality, held in place by cord inside of covers, rendering album loose-leaf.

No.	Size of leaf	Price each	No.	Extra leaves, per package of 12
BA . . . . .	5 x 8 . . . . .	\$3.25	BA . . . . .	\$.18
BB . . . . .	7 x 11 . . . . .	4.25	BB . . . . .	.25
BC . . . . .	10 x 12 . . . . .	6.00	BC . . . . .	.50
BD . . . . .	11 x 14 . . . . .	7.25	BD . . . . .	.60

### NILE

A handsome, new album, with cover of best imitation leather, duotinted, alligator skin pattern. 50 black leaves held in place by cord and holder inside of cover. The word "Photographs" stamped in gold foil on cover.

No.	Size of leaf	Price each	No.	Extra leaves, per package of 12
A . . . . .	5 x 8 . . . . .	\$1.60	A . . . . .	\$.15
B . . . . .	7 x 11 . . . . .	2.00	B . . . . .	.18

### TIBER

A very flexible loose-leaf album, with imitation leather covering; 50 black leaves.

No.	Size of leaf	Price each	No.	Extra leaves, per package of 12
A . . . . .	5 x 8 . . . . .	\$1.25	A . . . . .	\$.18
B . . . . .	7 x 11 . . . . .	1.75	B . . . . .	.25
C . . . . .	10 x 12 . . . . .	2.40	C . . . . .	.35
D . . . . .	9 x 14 . . . . .	2.75	D . . . . .	.50

## APOLLO

Solid bound, rounded back. Black watered silk cloth cover, with pocket for loose prints. Black leaves only.

No.	Size of leaf	Price each	No.	Size of leaf	Price each
CA	25 leaves 5 x 8 . . .	\$1.00	CE	50 leaves 5 x 8 . . .	\$1.25
CB	25 leaves 7 x 11 . . .	1.25	CF	50 leaves 7 x 11 . . .	1.60
CC	25 leaves 10 x 12 . . .	2.25	CG	50 leaves 10 x 12 . . .	2.50
CD	25 leaves 9 x 14 . . .	2.35	CH	50 leaves 9 x 14 . . .	2.75

## FORUM

Flexible, black leather embossed cloth cover.

No.	Size of leaf	Price Each	No.	Size of leaf	Price Each
A	25 Black leaves 5½ x 7 . . .	\$ .70	G	50 Black leaves 10 x 7 . . .	\$1.30
B	25 Black leaves 7 x 10 . . .	.90	H	50 Black leaves 11 x 14 . . .	2.55
C	25 Black leaves 10 x 7 . . .	.90	N	25 Sepia leaves 5½ x 7 . . .	.70
D	25 Black leaves 11 x 14 . . .	2.15	O	25 Sepia leaves 7 x 10 . . .	.90
E	50 Black leaves 5½ x 7 . . .	.90	P	25 Sepia leaves 10 x 7 . . .	.90
F	50 Black leaves 7 x 10 . . .	1.30	R	25 Sepia leaves 11 x 14 . . .	2.15

## FRONTENAC

Constructed on a novel principle, the binding being so done that every leaf always lies flat without pressure. Of good quality material, with choice of three covers—Green, Black or Wine color.

No.	Size of leaf	Price each
A	50 Black leaves 5 x 7 . . .	\$1.90
B	50 Black leaves 7 x 10 . . .	2.75
C	50 Black leaves 11 x 14 . . .	5.00

## ARTIST'S ALBUM

Loose leaf system, silk lacing.

No. 1, black leaves; No. 2, white leaves; No. 3, Sepia leaves, 5½ x 7 . . . . .	No. 4, black leaves; No. 5, white leaves; No. 6, Sepia leaves, 7 x 10 . . . . .
\$0.35	\$0.50
Extra leaves, package of 5 . . . . .	Extra leaves, package of 5 . . . . .
.12	.15

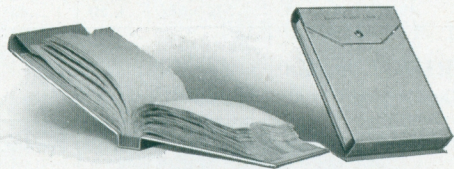
## SNAP-SHOT ALBUM

Substantial card covering, soft black leaves.

No. 19. 20 pages, 5½ x 7 . . . . .	No. 18. 20 pages, 7 x 10 . . . . .
\$0.18	\$0.22

## KODAK FILM NEGATIVE ALBUMS

These albums afford a safe, convenient and efficient way of keeping film negatives. Each leaf is, itself, an envelope, and the negatives do not come in contact with each other. The index furnishes a ready reference.



### Price

For 100 negatives, 3¼ x 5½, or smaller . . . . .	For 100 negatives, 2½ x 4¼, or smaller . . . . .
1.25	\$1.00
For 100 negatives, 3¼ x 4¼, 2⅞ x 4⅞, or 4 x 5 . . . . .	
1.25	
For 100 negatives, 5 x 7, or smaller . . . . .	
1.75	

## THE "WEEK-END" ALBUM

Just the thing you would like to use for sending to a friend the pictures made during a week-end or other brief visit. Made on the loose leaf plan, covers of sheepskin finished on the outside in craftsman style, of a brownish olive hue, with the under side unfinished.

No. 1—12 black leaves, 3 x 4½ inches							\$.35
Extra leaves, per dozen							.08
No. 2—12 black leaves, 5 x 6							.50
Extra leaves, per dozen							.12

## KODAK CARD MOUNTS

### VIEW

Carbon Black, and Scotch Grey, felt surface, beveled edges, no embossed design

For Prints	Size Outside	Per 50	Per doz.	For Prints	Size Outside	Per 50	Per doz.
1½ × 2½	3¼ × 4	\$0.45	\$0.15	4 × 5	5⅝ × 6⅝	\$0.85	\$0.30
2¼ × 3¼	4 × 5	.55	.20	2¼ × 7	4 × 8¾	.90	.30
2½ × 4¼	4¼ × 6	.70	.25	4¼ × 6½	6¼ × 8½	1.25	.40
3½ × 3½	5 × 5	.70	.25	5 × 7	7 × 9	1.40	.45
3¼ × 4¼	5 × 6	.80	.25	3½ × 12	5⅝ × 13¾	1.55	.45
3¼ × 5½	5¼ × 7	.95	.30				

### LAGOON

Jet Black, Ash Grey and White

For Prints	Size Outside	Per 50	Per doz.	For Prints	Size Outside	Per 50	Per doz.
2¼ × 2¼	3⅝ × 3⅝	\$0.55	\$0.20	2⅞ × 4⅞	5 × 7	\$1.05	\$0.35
2¼ × 3¼	4 × 5	.65	.20	3¼ × 5½	5¼ × 7½	1.10	.35
2½ × 4¼	4¼ × 6	.80	.25	4 × 5	5⅝ × 6⅝	1.05	.30
3½ × 3½	5 × 5	.80	.25	4¼ × 6½	6¼ × 8½	1.60	.45
3¼ × 4¼	5 × 6	.95	.30	5 × 7	7 × 9	1.70	.50

### RIVERVIEW

A Slip-in Mount, no paste needed. Grey and Brown—Oval and Square

For Prints	Size Outside	Per 50	Per doz.	For Prints	Size Outside	Per 50	Per doz.
2¼ × 3¼	4 × 5	\$1.10	\$0.30	3¼ × 4¼	5 × 6	\$1.35	\$0.40
2½ × 4¼	4⅝ × 5⅞	1.25	.35	3¼ × 5½	5 × 7	1.45	.45
3½ × 3½	5 × 5	1.30	.40	4 × 5	5¼ × 6¾	1.50	.45

### RIDGEWAY

In duplex form, for Oval or Square Prints, Brown and Grey

For Prints	Size Outside	Per 50	Per doz.	For Prints	Size Outside	Per 50	Per doz.
2¼ × 3¼	4 × 5	\$1.45	\$0.45	2⅞ × 4⅞	5 × 7	\$1.85	\$0.55
2½ × 4¼	4¼ × 6	1.60	.50	3¼ × 5½	5¼ × 7½	1.95	.60
3¼ × 4¼	5 × 6	1.75	.55	4 × 5	5⅝ × 6⅝	2.10	.65

**INSLIP ENLARGEMENT MOUNT**  
**COLOR, ENGLISH GREY OR SEPIA-BUFF**

No.	For Prints	Size Outside	Price Per Doz.	No.	For Prints	Size Outside	Price Per Doz.
A	3¼ × 5½	7¼ × 9½	\$0.80	E	6 × 10	10⅜ × 14⅜	\$1.00
B	4¼ × 6½	8¼ × 10½	.80	F	8 × 10	12⅜ × 14⅜	1.25
C	5 × 7	9½ × 11½	.80	K	5 × 8½	9 × 12½	.85
D	6½ × 8½	11⅞ × 13½	1.00	M	7 × 11	11 × 15	1.10
Price per Half Dozen							
G	10 × 12	15 × 17	\$1.25	J	11 × 14	17 × 20	\$1.60
H	8 × 14	14 × 20	1.25	L	7 × 12	11½ × 16½	1.25

**THE DRIMOUNT**  
**COLOR, ENGLISH GREY OR SEPIA-BUFF**

No.	For Prints	Size Outside	Price Per Doz.	No.	For Prints	Size Outside	Price Per Doz.
A	3¼ × 5½	7¼ × 9½	\$0.45	E	6 × 10	10⅜ × 14⅜	\$0.55
B	4¼ × 6½	8¼ × 10½	.45	F	8 × 10	12⅜ × 14⅜	.70
C	5 × 7	9½ × 11½	.45	K	5 × 8½	9 × 12½	.45
D	6½ × 8½	11⅞ × 13½	.55	M	7 × 11	11 × 15	.45
Price per Half Dozen							
G	10 × 12	15 × 17	\$0.55	J	11 × 14	17 × 20	\$0.75
H	8 × 14	14 × 20	.55	L	7 × 12	11½ × 16½	.50

**WOODMAT**

A new medium for mounting prints on the "slip in" principle, giving the effect of a rich brown wood frame.



	For Print	Outside	Each
No. 1	2¼ x 3¼	4⅜ x 5⅜	\$0.06
No. 1A	2½ x 4¼	4⅝ x 6⅜	.07
No. 3	3¼ x 4¼	5½ x 6½	.08
No. 3A	3¼ x 5½	6¼ x 8⅜	.09
No. 4	4 x 5	6¾ x 7¾	.09

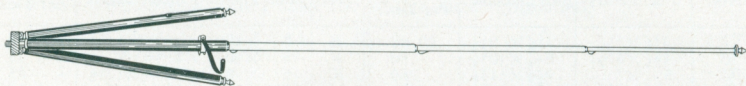
**THE DUOTONE FOLDER**

A neat folder in a pleasing shade of buff that goes well with either sepia or black and white prints. The prints are placed by slipping them under a flap.

	For Prints	Per 50	Per doz.		For Prints	Per 50	Per doz.
No. 0	1⅝ x 2½	\$1.85	\$0.65	No. 2C	2⅞ x 4⅞	\$2.60	\$0.85
No. 1	2¼ x 3¼	2.10	.70	No. 3A	3¼ x 5½	2.85	.90
No. 1A	2½ x 4¼	2.35	.80				

## TRIPODS

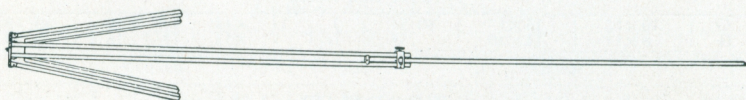
### KODAK METAL



The Kodak Metal Tripods have telescoping legs of brass tubing, the upper sections in black enamel—the lower ones nickel. They are light, compact and exceptionally rigid. No. 1 has revolving head, while No. 1C has solid head. No. 400 folds up flat and is supplied in neat case.

No. 0	—Three sections, length closed 15½ inches . . . . .	\$3.75
No. 1C	—Four sections, length closed 15¼ inches . . . . .	5.00
No. 1	—Four sections, length closed 15 inches . . . . .	5.50
No. 400	—Seven sections, length closed 12 inches . . . . .	6.25

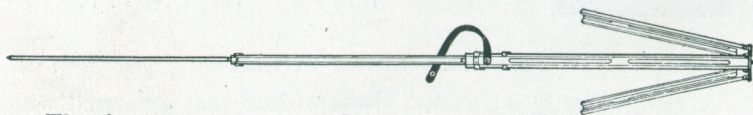
### THE BULL'S-EYE



Two sections. Aluminum revolving head. Made of maple, with brass fittings. For 4 x 5 cameras, or smaller. Length, extended, 42½ inches; folded, 24 inches. The only two-section tripod that will go into a suitcase.

Price, \$1.75

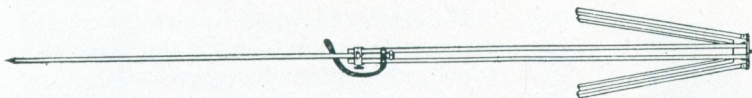
### THE STANDARD



The feature of this tripod is the automatic locking of the sections when they are extended. Light, compact and rigid. Fixed, non-detachable head. Length, folded 21 inches, extended, 53½ inches. Weight, 18 ounces. Cherry finish, brass trimmings.

Price, \$2.50

## THE FLEXO



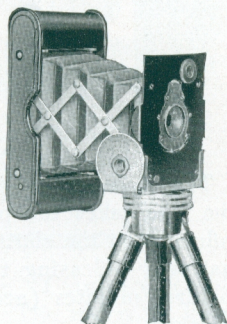
Two sections. Fixed, non-detachable head.  
Only clear, straight-grained wood is used in its construction.

Price, \$1.15

## VEST POCKET KODAK TRIPOD ADAPTER

The adapter simply slips over the front standard of the Vest Pocket Kodak and by attaching to a tripod, may be used in either the vertical or horizontal positions. It may be instantly detached when not in use.

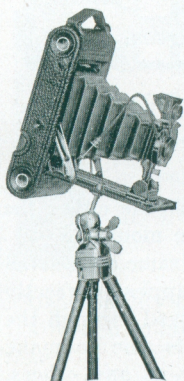
Price, \$0.50



## UNIVERSAL TRIPOD HEAD

This new Tripod Head is a simple and effective device which will fit any regular tripod socket. Has ball and socket, permitting camera to be tilted to any desired angle, and is especially valuable when photographing objects at close quarters.

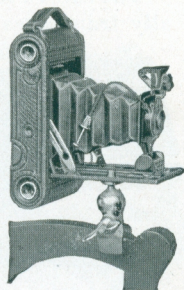
Universal Tripod Head \$1.25



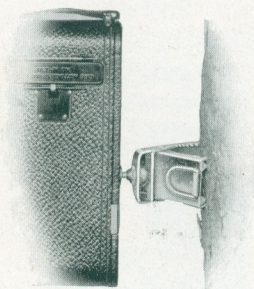
## THE UNIVERSAL CLAMP

The Universal Clamp is a small, convenient substitute for a tripod and may be attached to a chair, fence, automobile, or a motor cycle handle bar. It is so light and small as to be carried readily in the pocket, and fits any tripod socket.

Universal Clamp . . . . . \$0.75



## THE KODAPOD



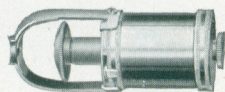
The little Kodapod—which is carried easily in the pocket—takes the place of a tripod, when a tree, fence, or similar object is near at hand. Its jaws have a bulldog grip that holds the wood like a vise, and likewise the Kodak, firmly in position. By means of a clamping screw, the camera may be adjusted to the correct vertical or horizontal position. It fits any standard tripod socket.

The Kodapod . . . . . \$2.00

## KODAK SELF TIMER

The Kodak Self Timer “presses the button” and permits the one who takes the picture to be one of the group. It has no influence on the shutter speeds, it being simply a means of automatically releasing the shutter in intervals of one-half second to three minutes (according to adjustment), after the Timer is released.

The Timer is made in but one size, and may be used on any camera fitted with cable release, but cannot be used with “bulb” release.

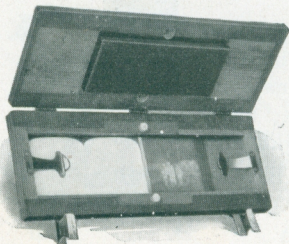


Kodak Self Timer . . . . . \$1.50

## STEREO KODAK SELF-TRANSPOSING PRINTING FRAME

In making Stereo prints it is necessary to transpose either the negatives before the printing or the prints before mounting.

The Stereo Kodak Self-Transposing Printing Frame automatically transposes the pictures in printing so they appear correctly as one picture when viewed through the stereoscope, and permits one to make Stereo prints as simply as any others. The frame is for film negatives only and is not adapted for glass plates, the paper best suited is Velox  $3\frac{1}{16} \times 6$ . For description of Stereo Kodak, see page 26.



Stereo Kodak Self-Transposing Printing Frame . . . . . \$2.50

### MOULDED GRADUATE



An inexpensive graduate especially suited to amateur use.

4 ounce . . . . .	\$0.20
8 ounce . . . . .	.30
16 ounce . . . . .	.40

### EASTMAN THERMOMETER

Especially valuable in tank or tray development. Has hook from which it can be suspended and has curved back to fit inside of tank.



Eastman Thermometer . . . . . \$0.75

### THERMOMETER STIRRING ROD



A combined stirring rod and thermometer. Carefully tested and accurate. Has flat end for pulverizing. The rod is  $\frac{1}{4}$  inch in diameter and  $9\frac{1}{4}$  inches long.

Thermometer Stirring Rod . . . . . \$1.00

### EASTMAN PHOTO PASTE

A solid, first quality white paste, will not discolor print or mount.



3-ounce tube . . . . .	\$0.15
5-ounce tube . . . . .	.25

### FLEXO PRINT ROLLER

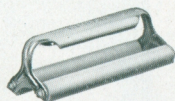
A thoroughly practical roller for mounting. Has 4-inch rubber roller and black enamel frame.



Flexo Print Roller . . . . . \$0.25

### KODAK PRINT ROLLER

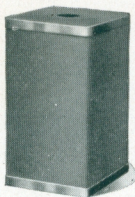
The best roller constructed for amateur use. Has two 6-inch rubber rollers and finely nickeled frame.



Kodak Print Roller . . . . . \$0.75



### KODAK CANDLE LAMP

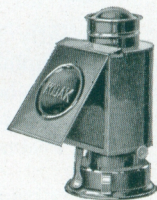


This clever little lamp is collapsible and can be packed into very small space when not in use. It is made of special, tested ruby fabric, bound in metal frames and gives a strong, safe light for the dark room.

Kodak Candle Lamp . . . . . \$0.25  
Extra Candles for same, per dozen . . . . . .40

### KODAK DARK ROOM LAMP

The Kodak Dark Room Lamp is oil burning and is fitted with both orange and ruby glass. It has an unusually broad wick regulated from the outside and gives a soft, steady light for the dark room.



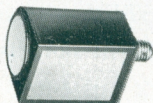
No. 2 Kodak Dark Room Lamp . . . . . \$1.00

### BROWNIE SAFELIGHT LAMP

But little larger than the electric bulb it holds, the Brownie Safelight Lamp screws into an electric socket which may be conveniently situated close to the place where the work is to be done.

The lamp is made of metal, neatly japanned; has circular safelight in the end and side safelight as well. Both safelights are the regular Series 1, and removable so that other series may be used, if desired. A 15 Watt Mazda lamp is used, but is not supplied.

The Brownie offers a most satisfactory means for dark room lighting where electricity is available.



Brownie Safelight Lamp . . . . . \$1.25  
Extra Circular End Safelight (any series), each. .25  
Extra Side Safelight (any series), each . . . . .35

### KODAK SAFELIGHT LAMP

The Kodak Safelight Lamp is ideal for all dark room uses, whether that be the work of the beginner, the advanced amateur, or the professional.

The lamp is supplied with a 5 x 7, Series 1, safelight for use with films or plates, not color sensitive. Safelights of other series may be obtained, if desired, for more advanced work. It is made of metal; neatly finished in a warm tone of brown and the inside is enameled white to intensify the force of the reflected light from the electric bulb in the top.

The lamp is supplied complete, excepting electric bulb, including besides the safelight, four feet of electric light cord with socket.

Kodak Safelight Lamp . . . . . \$4.00



## SAFELIGHTS FOR KODAK SAFELIGHT LAMP

Series 00—Yellow light, for use with gaslight papers.

Series 0—Bright orange light, for use with bromide paper and lantern plates.

Series 1—Orange safelight, for use with films or plates not color sensitive.

Series 2—Safelight, for extra rapid orthochromatic plates sensitive to green but not red.

Series 3—Green safelight, for use with red-sensitive panchromatic plates.

Series 4—Bright green safelight, for use with ordinary plates, for those who cannot use a red light. Not safe for orthochromatic plates. 5 x 7 (any series), each . . . . . \$0.60

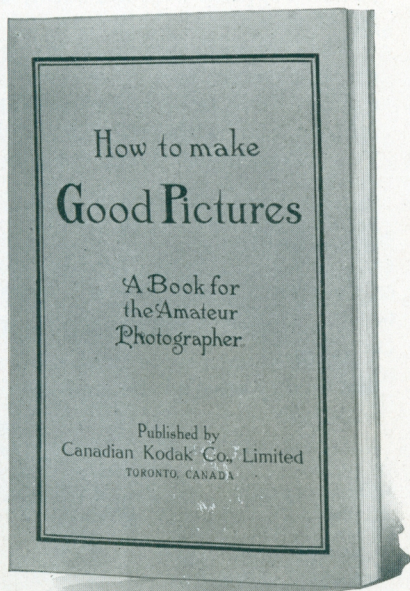
## “HOW TO MAKE GOOD PICTURES”

A text-book for the amateur photographer which gives in plain, downright language, that any one can understand, detailed directions, the observance of which will ensure good pictures.

Home portraiture and the making of indoor pictures generally are treated extensively, particular attention being paid to the use of the Portrait Attachment.

A clear and concise introduction to photography is given, with a brief explanation of the primary underlying principles. The volume comprises 160 pages, in every one of which there's valuable information for the photographer.

The price, paper covers . \$0.30



## VELOX TRANSPARENT WATER COLOR STAMPS



The making of beautifully colored prints or lantern slides, by the use of Velox Transparent Water Color Stamps, will be found an interesting and highly enjoyable diversion.

Each book of stamps includes twelve sheets of colors and each sheet is divided by perforations into twenty-two stamps. To use any color, merely tear off a stamp, place in a small saucer or palette supplied with the outfit, and cover with about a teaspoonful of water.

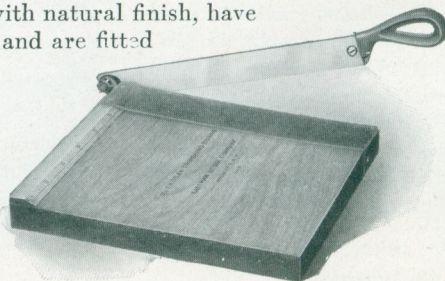
The Velox Transparent Water Color Stamp Outfit offers the greatest convenience in coloring prints, as it includes the book of stamps, three brushes and a white enameled mixing palette, put up in a neat cardboard case.

Velox Transparent Water Color Stamps, complete booklet, 12 colors . . . . .	\$0.25
Separate Color Leaves, two sheets . . . . .	.05
Set of 3 Special Brushes, per set . . . . .	.50
Mixing Palette . . . . .	.25
Velox Transparent Water Color Stamp Outfit, including book, three brushes and palette . . . . .	.75

## KODAK TRIMMING BOARDS

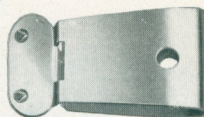
Made of hard wood, with natural finish, have fine quality steel blades and are fitted with rule.

No. 1, capacity, 5 x 5 inches . . . . .	\$0.50
No. 2, capacity, 7 x 7 inches . . . . .	.70
Transparent Trimming Gauge (extra). For No. 1 or No. 2 . . . . .	.35

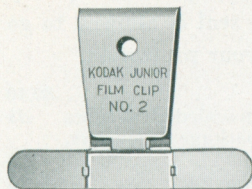


## KODAK JUNIOR FILM CLIP No. 1

The No. 1 clip is the most practical for tray development or drying of films. Has two jaws to prevent film from slipping. One size only.



Kodak Junior Film Clip No. 1, each . \$0.16

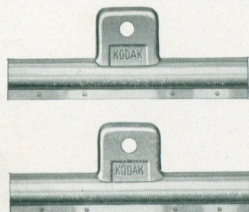


## KODAK JUNIOR FILM CLIP No. 2

This new film clip is similar to the No. 1 but, on account of being wider, may be used with wider film and will hold the film flat.

It is particularly adapted for use with 3A film, but may be used as well with larger or smaller film. Has jaws to prevent the wet film from slipping. Furnished in one size only, 3 inches wide.

Kodak Junior Film Clip No. 2, each . . . . . \$0.30



## EASTMAN FILM CLIP

A thoroughly dependable clip. Made in two sizes and nickel plated.

3½-inch, per pair . . . . . \$0.30  
5-inch, per pair . . . . . .45

## DEVELOPING TRAYS

"Bull's-Eye" Composition, 4 x 6 . . . . .	\$0.50
"Bull's-Eye" Composition, 5 x 8 . . . . .	.55
"Bull's-Eye" Composition, 3 x 8½ . . . . .	.50
"Bull's-Eye" Composition, 4½ x 14 . . . . .	1.00
Maple Leaf Enameled, 4 x 6 . . . . .	.55
Maple Leaf Enameled, 5 x 7 . . . . .	.80
Maple Leaf Enameled, No. 3A, shallow . . . . .	.35

## SUNDRIES

Cable Release, each . . . . .	\$0.25	Ferrotypes Plate, 10x14, light.	\$0.30
Hard Rubber Stirring Rod . . . . .	.25	Ferrotypes Plate, 10x14, heavy	.40
Kodak Film Clips, 5-inch (wood), per pair . . . . .	.15	Eastman Special Squeegee, 6-inch . . . . .	.60
Focusing Cloth, per yard . . . . .	1.10	Ditto, 8-inch . . . . .	.70

## TESTED CHEMICALS



Certainty in making negatives and prints depends as much on the quality of your chemicals as on any other one thing. All Kodak chemicals are tested both photographically and for purity before the C. K. C. tested seal is allowed to go upon them. That seal is your protection.

Kodak Chemical Outfit . . . . .	\$0.40
Eastman Special Developer Powders, per pkg. 5, in sealed glass tubes . . . . .	.25
Eastman Hydrochinon Developer Powders, per package 5 powders, in sealed glass tubes . . . . .	.25
Eastman M. Q. Developer Powders, per dozen . . . . .	.75
Ditto, per 1/2 dozen . . . . .	.38
Eastman Pyro Developer Powders, per package 5 powders, in sealed glass tubes . . . . .	.25
Hydrochinon, per 1-ounce can . . . . .	.43
Tozol, per 1-ounce . . . . .	1.10
Eastman Permanent Crystal Pyro, per 1-ounce bottle . . . . .	.50
Velox Re-Developer Tubes, package of 12 tubes . . . . .	.85
Hypo Sulphite of Soda, granular, per pound . . . . .	.10
Alum, powdered, per pound . . . . .	.30
Kodak Acid Fixing Powder, per pound package . . . . .	.25
Ditto, per 1/2-pound package . . . . .	.15
Ditto, per 1/4-pound package . . . . .	.10
Eastman Intensifier, glass tube, per tube . . . . .	.15
Eastman Reducer, per box of 5 tubes . . . . .	.50
Potassium Bromide, per ounce . . . . .	.28
Citric Acid, 4-ounce bottle . . . . .	.70
Kodak Tested Carbonate of Soda (desiccated), per 1 lb. bottle . . . . .	.30
Kodak Tested Sulphite of Soda (desiccated), per 1-lb. bottle . . . . .	.35

For Velox preparations, see page 50. For Solio preparations, see page 51.

For Tank Developer Chemicals, see page 41.

These prices subject to change without notice.

## TERMS

The prices in this catalogue are strictly net, except to regular dealers who carry our goods in stock. *These prices, owing to unsettled conditions, are, however, subject to change without notice.* For the convenience of our customers we recommend that they make their purchases from a dealer in photographic goods, as by so doing they can save both time and express charges.

CANADIAN KODAK CO., Limited,

Toronto, Canada.

# “KODAK”

IS the registered and common-law Trade Mark of the Canadian Kodak Company, Limited, and cannot be rightfully applied except to goods of their manufacture. When a dealer tries to sell you under the Kodak name, a camera, or films, or other goods not of their manufacture, you can be sure that he has an inferior article that he is trying to market on the Kodak reputation.

*If it isn't an Eastman,  
it isn't a Kodak*

S. BELLE,  
Fraserville, Que.