



R
1902

Simplicity

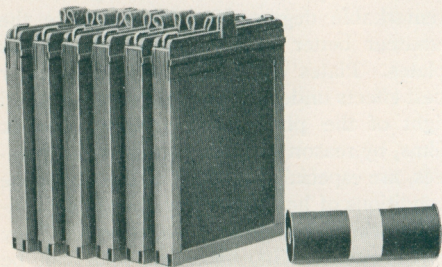
'TIS KODAK SIMPLICITY.

Simplicity has made the Kodak success. 'Tis the Kodak simplicity that enables the novice to operate the camera without mistakes; 'tis the Kodak quality and Kodak film quality that enable him to secure perfect results. Because they give no halation, because they render true color values in a remarkable degree Kodak films give the amateur better average results than glass plates. Plates are intended to give their best effects under the soft and well regulated light of the photograph gallery. Kodak films, by reason of their non-halation qualities, are especially adapted to use under the conditions of harsh lighting and strong contrasts which the amateur encounters. They give better results, therefore, than can be obtained under similar conditions with glass plates.

As to Pocket Photography.

The difference between a Folding Pocket Kodak and a pocket plate camera is that one

means pocket photography and the other doesn't. Pocket photography was only made possible by the Kodak film cartridge. Not only does the Kodak go inside the pocket, but inside the Kodak goes the film—all becomes one compact, self-contained mechanism. Take, for instance, the $3\frac{1}{4}$ x $4\frac{1}{4}$ size. One dozen glass plates and holders for same weigh one pound, twelve ounces. A Kodak cartridge containing one dozen $3\frac{1}{4}$ x $4\frac{1}{4}$ films weighs two ounces—just one-fourteenth as much. In the larger sizes the difference, in favor of film, is even more marked.



This Picture Tells the Story.

No matter how small and compact the pocket plate camera, the weight and bulk of plates and holders cannot be gotten away from.

A No. 3 Folding Pocket Kodak, including its load of twelve exposures, weighs less and takes less room than an equivalent in glass plates and their holders—to say nothing of the weight and bulk of the “pocket plate camera” itself.

The only “pocket photography,” in the true sense of the word, is Pocket Kodak photography. All attempts to realize this end by means of a plate camera are but makeshifts.

The Cartridge System.



The Film Cartridge

By the Kodak system, light-proof cartridges, which can be inserted in the camera or removed in daylight, take the place of glass plates. These cartridges are made for two, four, six or twelve exposures and the film is of such quality that, except for gallery use, it is rapidly taking the place of glass plates. The

reasons are obvious. Film has that quality which appeals to the most artistic workers, yet has none of the drawbacks of glass plates. It is a thin, light, rollable and non-breakable substance *versus* heavy, fragile glass. It means comfort *versus* discomfort, and where the transportation problem is to be faced, it frequently means success *versus* failure.

World-Wide Kodakery.

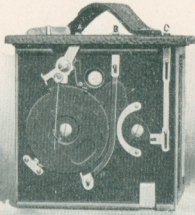
By their optical perfection, by their perfection of design and construction, by the perfection of Kodak film, our trade-mark "Kodak" has become known the world over. Kodaks are the standard by which all cameras are measured. The Kodaks in use far outnumber all other makes of cameras put together. Nothing but absolute merit could have raised them to this position.

How to Use Them.

We give, with each Kodak, an illustrated and carefully written instruction book containing not only full instructions for loading the instrument but comprehensive chapters on "Snap Shots," "Time Exposures," "Flash Lights," "Developing" and "Printing," thus removing the difficulties from the beginner's path. Films are as easily, yes, more easily, developed than glass plates. By the Kodak system every step of picture making becomes simple—a delight to even the novice. To those who do not care to go further than making the exposures we still say :

" You press the button, we do the rest."

EASTMAN KODAK COMPANY,
Rochester, N. Y.



Eastman's Improved Rotary Shutter.

THE simplicity and absolute reliability of our Rotary Shutter was one of the features which gave to the original Bulls-Eye and to the Pocket Kodak their immense popularity. It is always set. Snap-shots are made by simply pushing the lever "A" alternately to the right or left, thus revolving the metal disc and making the exposure as the opening in disc passes the lens. If, by chance, the lever be pushed in the wrong direction it will simply remain unmoved and no click will be heard.

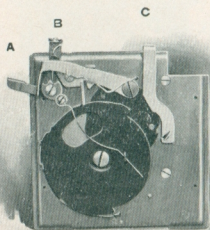
For time exposures the Kodaker simply pulls up the slide "B" and then pushes the lever "A" in one direction to open and in the opposite direction to close the shutter. It will be seen that when the slide "B" is pulled out the shutter strikes as it passes the lens, stopping half way across with the opening over the lens.

The lever "C" controls the stops, of which there are three.

Made with special machinery, by skilled mechanics, this simple mechanism makes an ideal shutter for the hand camera.

The Eastman Rotary Shutter is used on the No. 2 and No. 4 Bulls-Eye, No. 2 Bullet and the No. 2 Flexo Kodaks.

This shutter is also used on the Brownie Cameras; the No. 1 Brownies, however, have but one stop.



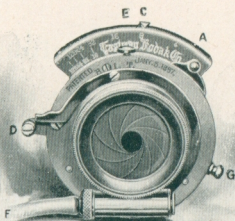
Eastman Automatic Shutter.

TO make a snap-shot: press down lever "B." To make a time exposure: press down lever "A" once to open, and again to close the shutter. That's all there is to operating the Eastman Automatic Shutter. It is always set.

The lever "C" operates the stops, of which there are three.

Not only are these shutters made with the finest special machinery and with the utmost care, but they are given a thorough and practical test by experienced inspectors. In fact, all of our shutters are subjected to the most rigid inspection before shipment, as a guarantee that every part is perfect and that no error of adjustment has been made in assembling.

The Eastman Automatic Shutter is used on the Folding Pocket Kodaks No. 0, No. 1, No. 1A, No. 2 and No. 3.



Eastman Triple Action Shutter.

THIS is a shutter with a wide range of action, built with the accuracy of a watch, yet simple, strong, reliable and far more compact than other shutters of similar capabilities.

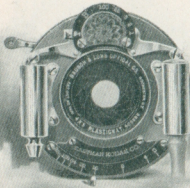
For snap-shots place lever "E" at point "I" and set shutter by turning lever "A" to left to limit of motion. Expose by pressing bulb attached to tube "F" or by touching release "D." There are three speeds for instantaneous exposures, which are regulated by moving the lever "G."

For time exposures place lever "E" at point "T" and set shutter by turning lever "A" to left to limit of motion. Press bulb (or release "D") once to open and again to close shutter.

For short time exposure place lever "E" at "B" and set shutter by moving "A" to left to limit of motion. Press bulb (or finger release D) to open shutter and release it to close shutter. The shutter remains open as long as the bulb remains under pressure and closes the instant it is released.

The stops are operated by moving lever "C" and range from U. S. 4 to U. S. 128.

As furnished with the No. 3, 4 and 5 Cartridge Kodaks and No. 4 Bullet Special (Model C) Kodaks, this shutter is fitted with pneumatic release operated by bulb. With the No. 2 and No. 4 Bulls-Eye Special and the No. 2 Bullet Special Kodaks it is operated by levers, those for setting the shutter and making the exposure *working from the outside of camera*, so that the front does not have to be opened except to change the adjustment.



B. & L. Automatic Shutter.

THIS is a shutter of the highest grade and is one which we have selected after the most careful tests for use where special lens and shutter equipments are desired. It will be furnished (extra) with the Nos. 3, 4 and 5 Cartridge Kodaks or with the No. 3 Folding Pocket Kodak and is included also in the regular equipment of the No. 3 Folding Pocket Kodak de Luxe at no extra charge.

The B. & L. Automatic shutter is always set and is operated by a pressure of the bulb or by touching the trigger. It gives automatic exposures from one one-hundredth of a second to one second; it has the "bulb" exposure by which the shutter opens when the bulb is pressed and closes when the pressure is released and has the time action, one pressure of the bulb opening and another pressure closing the shutter. It is fitted with iris diaphragm stops with scale for openings Nos. 3, 4, 8, 16, 32, 64 and 128.

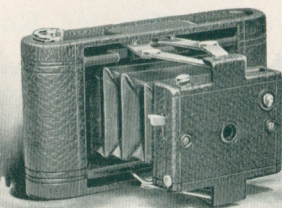
The Folding Pocket Kodaks.

ALUMINUM and the cartridge system of film photography made the Pocket Kodak possible.

They are to other cameras what watches are to clocks. They lack nothing in efficiency; they gain everything in convenience. By the quality of the work which they accomplish they appeal to the serious photographic worker; by their unobtrusiveness they appeal to travelers who frequently wish to carry them where the camera is not looked upon with favor. This same unobtrusiveness especially commends them to those who, in order to get natural and characteristic poses, wish to take their subjects unawares. By their small size, light weight and durability they appeal to everyone.

In the hands of soldiers and war correspondents in Cuba, in the Philippines, in China and in the Transvaal they have proven their efficiency and durability. To the Kodak almost entirely, and particularly to the Pocket Kodak, is due the credit for the magnificent illustrations of these wars which have been published in the great weeklies and magazines—in some cases full double page pictures having been made from the small Kodak negatives.

All of the Folding Pocket Kodaks, from the six dollar No. 0 to the seventy-five dollar Kodak de Luxe, are well made in every particular. They stand for the latest triumph in photography.



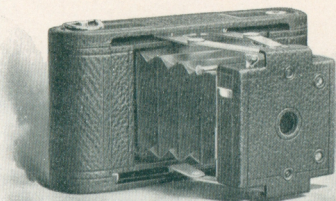
The No. 0 Folding Pocket Kodak.

THIS instrument, the latest addition to the Kodak family, might almost be styled a "Vest Pocket Kodak." Indeed, there are some liberal sized vest pockets that it will go into very readily, and it slips into an inside coat pocket as handily as a wallet. It is but $3\frac{1}{8}$ inches wide, $1\frac{3}{8}$ inches thick and $5\frac{5}{8}$ inches long and weighs but 12 ounces, yet makes pictures $1\frac{5}{8} \times 2\frac{1}{2}$ inches, or more than a third larger than the original Pocket Kodak. It has a meniscus lens of 3 inch fixed focus and perfect covering power, has the Eastman Automatic Shutter and set of three stops described on page 6, is fitted with brilliant finder and loads in daylight for six or for twelve exposures.

Made of aluminum, covered with fine black seal grain leather and has nickeled fittings. It is as dainty as a lady's purse.

THE PRICE.

No. 0 Folding Pocket Kodak, for pictures $1\frac{5}{8} \times 2\frac{1}{2}$, not loaded,	\$6.00
Transparent Film Cartridge, 12 exposures,	
$1\frac{5}{8} \times 2\frac{1}{2}$,25
Do., 6 exposures,15
Black Sole Leather Carrying Case, with shoulder strap,	1.00



No. 1 Folding Pocket Kodak.

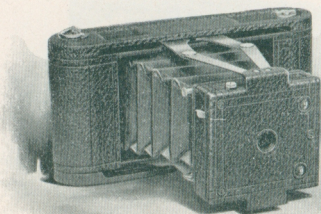
NO camera was ever more enthusiastically received than the No. 1 Folding Pocket Kodak, which was the original of our folding pocket series, and it has continued long in its popularity. Very small and compact, yet yielding pictures of a satisfactory size and of wonderful quality, it fully deserves the success which has attended it.

The lenses used in these instruments are meniscus achromatic, have a fixed focus of 4 inches and are most carefully tested by our own inspector. These cameras have the Eastman Automatic shutters with a set of three stops, described on page 6, have two brilliant finders, one for vertical and one for horizontal exposures, and have a capacity for 12 exposures, $2\frac{1}{4} \times 3\frac{3}{4}$, yet measure only $1\frac{5}{8} \times 3\frac{1}{2} \times 6\frac{3}{4}$ inches and weigh but 15 ounces.

Made of aluminum, covered with fine black seal grain leather and have nickeled fittings.

THE PRICE.

No. 1 Folding Pocket Kodak for pictures $2\frac{1}{4} \times 3\frac{3}{4}$ inches, with achromatic lens, not loaded,	\$10.00
Transparent Film Cartridge, 12 exposures, $2\frac{1}{4} \times 3\frac{3}{4}$,	.40
Do., 6 exposures,	.20
Kodak Portrait Attachment,	.50
Black Sole Leather Carrying Case, with shoulder strap,	1.25



Folding Pocket Kodak No. 1A.

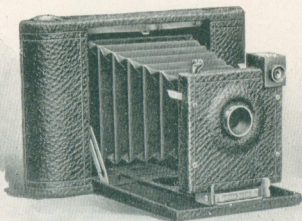
A UNIQUE feature of this instrument is the artistic shape of the pictures which it makes. Their size, $2\frac{1}{2} \times 4\frac{1}{4}$, is particularly adapted to broad landscape views where the instrument is used horizontally and to portraiture, (especially full length figures) where it is used vertically. The No. 1A is, nevertheless, wonderfully light and compact.

The lens is meniscus achromatic with a fixed focus of 5 inches, the shutter is the Eastman automatic described on page 6, and is equipped with a set of three stops. It has two finders, one for vertical and one for horizontal exposures, and a capacity of 12 exposures without reloading. The size, $1\frac{3}{4} \times 3\frac{7}{8} \times 7\frac{3}{4}$ inches, is marvelously small for an instrument of such great capabilities, and the weight is but 18 ounces.

Made of aluminum, covered with fine black seal grain leather and has nickeled fittings.

THE PRICE.

Folding Pocket Kodak No. 1A, for pictures $2\frac{1}{2} \times 4\frac{1}{4}$ inches, with achromatic lens, not loaded,	\$12.00
Transparent Film Cartridge, 12 exposures, $2\frac{1}{2} \times 4\frac{1}{4}$,50
Do., 6 exposures,25
Kodak Portrait Attachment,50
Black Sole Leather Carrying Case, with shoulder strap,	1.25



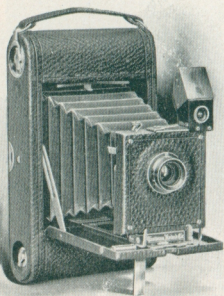
No. 2 Folding Pocket Kodak.

THAT the $3\frac{1}{2} \times 3\frac{1}{2}$ size has long been a popular one with amateurs is shown by the enormous sale of the $3\frac{1}{2} \times 3\frac{1}{2}$ Bulls-Eye and Bullet Kodaks. Furthermore, it is the largest size with which a fixed focus lens can be properly used and it thus appeals to the many amateurs who do not wish to be bothered with a focusing scale—yet desire the largest possible picture. A Folding Pocket Kodak which will make $3\frac{1}{2} \times 3\frac{1}{2}$ pictures is, therefore, a most desirable instrument.

The No. 2 Folding Pocket Kodaks have a capacity of 12 exposures, $3\frac{1}{2} \times 3\frac{1}{2}$, yet measure but $1\frac{1}{2} \times 4\frac{1}{2} \times 6\frac{3}{4}$ inches and weigh 17 ounces. They have meniscus achromatic lenses of great depth and speed and with a fixed focus of $4\frac{1}{2}$ inches. They have the Eastman automatic shutter described on page 6, have sets of three stops, brilliant finder, and socket for tripod screw. They are made of aluminum, have the finest black seal grain cover, have handsomely nicked fittings and are at once strong, dainty and durable.

THE PRICE.

No. 2 Folding Pocket Kodak, for pictures $3\frac{1}{2} \times 3\frac{1}{2}$ inches, with achromatic lens, not loaded,	\$15.00
Transparent Film Cartridge, 12 exposures, $3\frac{1}{2} \times 3\frac{1}{2}$,	.60
Do., 6 exposures,	.30
Do., "Double-Two" Cartridge (4 exposures)	.20
Kodak Portrait Attachment,	.50
Black Sole Leather Carrying Case, with shoulder strap,	1.25



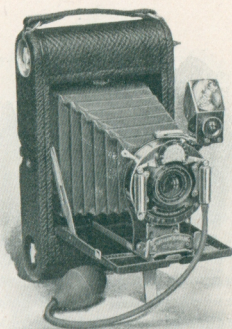
No. 3 Folding Pocket Kodak.

IN this instrument is the triumph of pocket photography. It has the capacity of cameras of triple its bulk, loading for 12 pictures $3\frac{1}{4} \times 4\frac{1}{4}$ inches, yet it weighs only 22 ounces and measures but $1\frac{5}{8} \times 4\frac{1}{2} \times 7\frac{1}{2}$ inches.

It is fitted with double combination lenses which are strictly rectilinear and very rapid. It has our automatic shutter described on page 6, has a focusing scale, sets of three stops, socket for tripod screw and brilliant reversible finder with hood.

Made of aluminum, covered with the finest black seal grain leather and with nicked fittings, the No. 3 Folding Pocket Kodak is light, strong and handsome. Indeed, it is the ideal camera for those who demand the highest excellence in camera construction yet desire a pocket instrument.

An innovation for 1902 is the glass plate attachment which we can now furnish for these instruments. This attachment is simply an extra back for the camera, taking the place of the regular back, and can be placed in position in a few seconds. It has a ground glass for focusing and focusing shade and with it are used single aluminum plate holders which are very light, yet safe.



*No. 3 Folding Pocket Kodak, with
B. & L. Automatic Shutter.*

THE PRICE.

No. 3 Folding Pocket Kodak, for pictures, $3\frac{1}{4}$ x $4\frac{1}{4}$ inches, with Rapid Rectilinear Lens, and Eastman Automatic Shutter, (not loaded),	\$17.50
Do., with R. R. lens, speed <i>f.</i> 8 and B. & L. Automatic Shutter. (See page 8),	27.50
Do., with Bausch & Lomb Plastigmat Lens No. 1, focus 5 inches, speed <i>f.</i> 6.8 and B. & L. Automatic Shutter. (See pages 8 and 31),	59.50
Black Sole Leather Carrying Case, with strap,	1.25
Glass Plate Adapter, with ground glass,	3.50
Single glass plate holders, $3\frac{1}{4}$ x $4\frac{1}{4}$, each,	.50
No. 3 Folding Pocket Kodak de Luxe, for pictures $3\frac{1}{4}$ x $4\frac{1}{4}$ inches, with No. 1 Plastigmat lens, B. & L. Automatic Shutter, covered with selected Persian morocco, bellows covered with brown silk, solid silver name plate, with carrying case of Persian morocco with silver trimmings, (not loaded),	75.00
Transparent Film Cartridge, 12 exposures, $3\frac{1}{4}$ x $4\frac{1}{4}$,	.70
Do., 6 exposures,	.35
Do., "Double-Two" Cartridge (4 exposures),	.25
Kodak Portrait Attachment,	.50

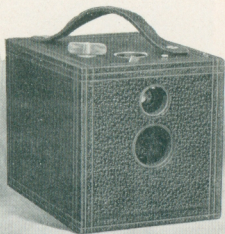
Bullet, Bulls-Eye and Flexo Kodaks.

IN writing us regarding a Kodak which he had purchased, a well known amateur once said: "It stands the supreme test of mechanical perfection—it works."

To make cameras that "work," that are not likely to get out of order, that give results not only in the hands of the expert but in the hands of the novice—this has been and is our aim. We always make sure that we have accomplished this end before we place a camera upon the market. It is our object to so construct them that the beginner can readily grasp the method of operation and get twelve good negatives from his first twelve exposures.

In none of our instruments have we been more successful in securing absolute simplicity than in the Bullets, the Bulls-Eyes and the Flexos. Simple in construction as well as in operation, they are none the less perfectly made in every detail and are subjected to the same rigid tests to which we put the higher priced instruments. They are not so compact as the Folding Pocket Kodaks or the Cartridge Kodaks, but they are, nevertheless, instruments of high quality, instruments of great capabilities and absolute reliability. They have lenses and shutters which are adapted to each other and to the work which is expected of them. There are no more accurate and reliable cameras to be had than the Bullet, Bulls-Eye and Flexo Kodaks.

The "Specials" are similar to the other Bullet and Bulls-Eyes of corresponding sizes but are equipped with the finest Rapid Rectilinear lenses and with the Eastman Triple Action shutter described on page 7. They are the very highest type of box form cameras.

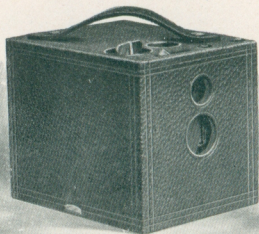


No. 2 Flexo Kodak.

THIS, without exception, is the best five dollar camera ever offered. The No. 2 Flexo is in every respect a well made instrument and is fitted with fixed focus achromatic lens, set of three stops, finder, socket for tripod screw and our improved Rotary shutter described on page 5. It has a capacity of 12 exposures without reloading, making pictures $3\frac{1}{2} \times 3\frac{1}{2}$ inches, measures $4\frac{3}{8} \times 4\frac{5}{8} \times 5\frac{7}{8}$ inches and weighs 19 ounces. It is covered with fine grain leather and is handsomely finished. The Flexo, like the other Kodaks, is complete—ready for use, the price including every requisite for taking pictures except the film, whereas the price of most of the so-called five dollar plate cameras includes but one holder and a further expenditure of \$2.00 or \$3.00 is called for to supply the necessary number of holders.

THE PRICE.

No. 2 Flexo Kodak, for pictures $3\frac{1}{2} \times 3\frac{1}{2}$ inches, with achromatic lens, not loaded,	\$5.00
Transparent Film Cartridge, 12 exposures, $3\frac{1}{2}$ $\times 3\frac{1}{2}$,	.60
Do., 6 exposures,	.30
Do., "Double-Two" Cartridge (4 exposures),	.20
Kodak Portrait Attachment,	.50
Black Sole Leather Carrying Case with shoulder strap,	1.25



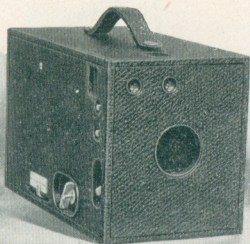
The No. 2 Bulls-Eye Kodak.

THIS instrument, the original of the cartridge system series, accomplished wonders in the popularizing of amateur photography. Its simple and practical excellence made it at once a pronounced favorite, and it is still one of the most popular Kodaks. Improvements have, of course, been made from time to time, and the Bulls-Eye, though retaining the general features of the original instruments, is vastly better than the earlier models.

The No. 2 Bulls-Eye has a capacity for 12 pictures, $3\frac{1}{2} \times 3\frac{1}{2}$ inches; measures $4\frac{1}{2} \times 4\frac{5}{8} \times 5\frac{3}{4}$ inches and weighs 22 ounces. It has a meniscus achromatic lens with fixed focus of $4\frac{1}{2}$ inches, the Eastman Rotary shutter, described on page 5, set of three stops, brilliant finder, socket for tripod screw. The No. 2 Bulls-Eyes are covered with the finest seal grain leather, have nickeled fittings and are handsomely finished.

THE PRICE.

No. 2 Bulls-Eye Kodak, for pictures $3\frac{1}{2} \times 3\frac{1}{2}$ inches, fitted with achromatic lens, not loaded,	\$8.00
No. 2 Bulls-Eye Special Kodak, for pictures $3\frac{1}{2} \times 3\frac{1}{2}$ inches, Rapid Rectilinear lens, $5\frac{3}{8}$ inch focus, Eastman Triple Action Shutter, (see page 7), not loaded,	15.00
Transparent Film Cartridge, 12 exposures, $3\frac{1}{2} \times 3\frac{1}{2}$,	.60
Do., 6 exposures,	.30
Do., "Double-Two" Cartridge (4 exposures),	.20
Kodak Portrait Attachment,	.50
Black Sole Leather Carrying Case, with shoulder strap,	1.25



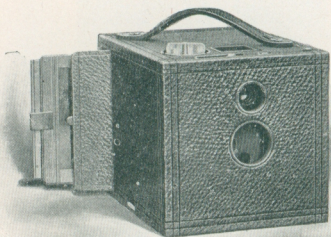
No. 4 Bulls-Eye Kodak.

THIS instrument is a simple and practical camera of the box form, making pictures of the popular 4 x 5 size. It is well made in every particular and is splendidly equipped.

The No. 4 Bulls-Eye has an achromatic lens of superior quality and with a focus of $6\frac{1}{4}$ inches. It has the Eastman Rotary shutter, described on page 5, focusing scale, set of three stops, two brilliant finders, one for vertical and one for horizontal exposures, and is provided with two tripod sockets, one for vertical and one for horizontal exposures. It has a capacity of 12 exposures 4 x 5, measures $5 \times 5\frac{7}{8} \times 9\frac{1}{4}$ inches and weighs 2 pounds, 10 ounces. It has a handsome finish, nickel fittings, and is covered with fine seal grain leather.

THE PRICE.

No. 4 Bulls-Eye Kodak, for pictures 4 x 5 inches, fitted with achromatic lens, not loaded,	\$12.00
No. 4 Bulls-Eye Special Kodak, for pictures 4 x 5 inches; fitted with Rapid Rectilinear lens, speed <i>f.</i> 8, $6\frac{1}{2}$ inch focus, Eastman Triple Action shutter (see page 7), not loaded,	20.00
Transparent Film Cartridge, 12 exposures, 4 x 5,	.90
Do., 6 exposures,	.45
Do., "Double-Two" Cartridge (4 exposures),	.30
Black Sole Leather Carrying Case, with shoulder strap,	2.00



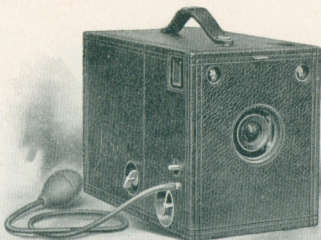
No. 2 Bullet Kodak.

THE Bullet Kodaks are in reality the same as the Bulls-Eye Kodaks of the corresponding sizes except that they may be used with glass plates as well as with cartridge film.

With films the No. 2 Bullet loads for 12 exposures $3\frac{1}{2} \times 3\frac{1}{2}$ inches, or it may be used with double plate holders taking $3\frac{1}{4} \times 3\frac{1}{2}$ glass plates. Used in either way it is a complete and compact instrument of great capabilities. It is fitted with the finest fixed focus, meniscus, achromatic lens, having a focal length of $4\frac{1}{2}$ inches, set of three stops, square, brilliant finder, socket for tripod screw and has the Eastman Rotary shutter described on page 5. Size of camera, $4\frac{3}{4} \times 4\frac{7}{8} \times 6\frac{1}{2}$ inches; weight 28 ozs. Beautifully finished, with nickel fittings and the finest black seal grain leather covering.

THE PRICE.

No. 2 Bullet Kodak for pictures $3\frac{1}{2} \times 3\frac{1}{2}$ inches, fitted with meniscus achromatic lens, not loaded,	\$10.00
No. 2 Bullet Special Kodak for pictures $3\frac{1}{2} \times 3\frac{1}{2}$ inches, Rapid Rectilinear lens, $5\frac{3}{8}$ inch focus, Eastman Triple Action shutter (see page 7), not loaded,	18.00
Transparent Film Cartridge, 12 exposures, $3\frac{1}{2} \times 3\frac{1}{2}$,	.60
Do., 6 exposures,	.30
Do., "Double-Two" Cartridge (4 exposures),	.20
Double Plate Holders, $3\frac{1}{4} \times 3\frac{1}{2}$, each,	1.00
Kodak Portrait Attachment,	.50
Black Sole Leather Carrying Case, with shoulder strap,	1.25



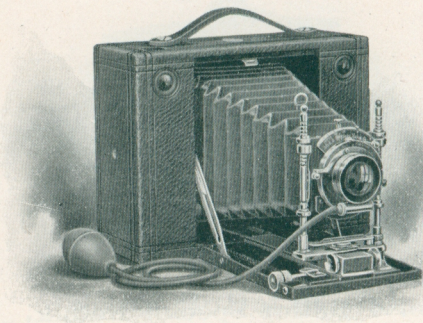
No. 4 Bullet Special Kodak.

THIS is unquestionably the finest box form camera manufactured. It is of the highest grade in every detail and is a compact and convenient instrument, whether used with cartridge films or glass plates. With films it has a capacity of 12 exposures, 4 x 5, or it takes 4 x 5 double plate holders. Equipped with 6½ inch focus Rapid Rectilinear lenses, with speed of *f.* 8. and with the Eastman Triple Action Shutter, described on page 7, adapted to use with bulb or finger release. Has brilliant finders and tripod sockets for both vertical and horizontal exposures, and has carefully adjusted focusing scale, and iris diaphragm stops, graduated for Nos. 4, 8, 16, 32, 64 and 128. When used with plates, may be focused on the ground glass if desired.

Former models of the No. 4 Bullet Special used roll-holder cartridges. The Model C uses Kodak Cartridges of either "Double-Two," 6 or 12 exposures. Be sure, therefore, to specify "*Model C*" when ordering film for this Kodak.

No. 4 Bullet Special Kodak for pictures 4 x 5 inches, Model C, with rapid rectilinear lens, speed <i>f.</i> 8, not loaded,	\$22.50
*Transparent Film Cartridge, 12 exposures, 4 x 5,	.90
*Do., 6 exposures,	.45
*Do., "Double-Two" Cartridge (4 exposures),	.30
*Double plate holders, 4 x 5, each,	1.00
*Black Sole Leather Carrying Case, with shoulder strap,	2.25

*Be sure and specify Model C when ordering.



CARTRIDGE KODAKS.

IN these instruments the Kodak idea is perfected. Based upon the daylight loading film principle they are both compact and convenient. In construction they combine lightness and strength—a combination that is only made possible by our unequalled facilities and experience, while by their great scope they open practically the entire field of photography to the amateur.

Strength and lightness are secured in the Cartridge Kodaks by a judicious combination of aluminum and hard wood—the latter being treated to a secret process of our own by which it resists atmospheric changes to a remarkable degree. We have ourselves been surprised at the rough usage and severe climatic changes which these instruments have withstood in Cuba, China, the Philippines and South Africa, and with the increased use of aluminum in the new models these instruments are even stronger than were the earlier designs. No other camera of equal capabilities can so well withstand the rough usage of travel.

The lenses furnished in the regular equipment are strictly rectilinear and very rapid, having a working speed of $f. 8$. They do not, therefore, require the most favorable conditions but enable the operator to secure good instantaneous pictures under circumstances where such pictures would be impossible with a less powerful lens. Our system of inspection insures a perfect lens with every instrument.

Wide angle lenses, the cells of which fit the regular shutter and which are easily attached, can be supplied at a very reasonable extra charge, or, if desired, the instruments may be given a special lens and shutter equipment. See page 31.

The Eastman Triple Action Shutters furnished with the Cartridge Kodaks are accurate and reliable; meet every requirement of the most advanced amateurs, and have iris diaphragm stops from No. 4 to No. 128. They are described in detail on page 7.

The new Cartridge Kodaks have an improved rising front which locks automatically and also an improved side slide (rising when used for horizontal pictures) and have aluminum leather covered front boards of great strength, but which are nevertheless light and are very neat in appearance.

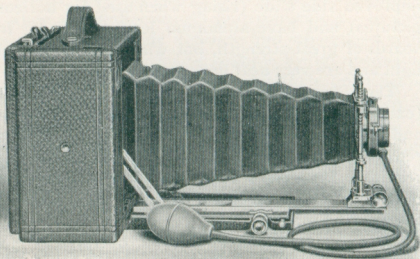
The glass plate attachments which are supplied (extra) for these instruments are in no way "trappy" and are attached by simply removing the back and replacing with glass plate attachment, an operation requiring but a few seconds. With plates the instrument may be focused either on the ground glass or by the focusing scale.

An extra extension to bellows, operated by means of rack and pinion, permits the photographing of objects at a distance of only 18 inches from the lens and also permits of the advantageous use of a tele-photo attachment. With the extra extension the ground glass is, of course, to be employed in focusing.

The Cartridge Kodaks are so constructed as to

make them practical enlarging cameras, for which purpose they are particularly convenient. These instruments will make enlargements of any size, being limited only in the negatives which they will "cover." The No. 3, for instance, will make enlargements from $3\frac{1}{4} \times 4\frac{1}{4}$ or from any smaller negatives, the No. 4 from 4×5 or smaller, and the No. 5 from 5×7 or smaller.

The Cartridge Kodaks have brilliant finders and tripod sockets for both vertical and horizontal exposures, having our patent non-collapsing bellows and are covered with the finest seal grain leather. The richness of the leather and the polished mahogany set off the nicked fittings in brilliant contrast, while the correct proportioning of all the parts gives an instrument which satisfies the eye in every detail. In design, construction and finish they more than meet the demands of the most exacting experts—they leave nothing to be desired.



No. 3 Cartridge Kodak.

For rectangular pictures, $4\frac{1}{4} \times 3\frac{3}{4}$ inches; capacity, 12 exposures without reloading; size, closed, $3\frac{3}{4} \times 5\frac{3}{4} \times 7\frac{1}{2}$ inches; weight, 2 pounds, 12 ounces; length of focus of lens, 6 inches.

No. 3 Cartridge Kodak, rapid rectilinear lens, Eastman Triple Action Pneumatic Shutter, (not loaded),	\$20.00
Transparent Film Cartridge, 12 ex., $4\frac{1}{4} \times 3\frac{3}{4}$,70
Do., 6 exposures,35
Do., "Double-Two" Cartridge, 4 exposures,25
Glass Plate Adapter, with ground glass,	2.00
Double Plate Holders, each,	1.00

No. 4 Cartridge Kodak.

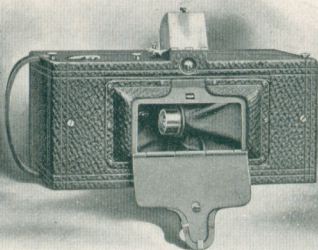
For rectangular pictures, 5×4 inches; capacity, 12 exposures without reloading; size of camera, $3\frac{3}{4} \times 6\frac{3}{8} \times 8\frac{1}{4}$ inches; weight, 3 pounds, 2 ounces; length of focus of lens, $6\frac{1}{2}$ inches.

No. 4 Cartridge Kodak, with rapid rectilinear lens and Eastman Triple Action Pneumatic Shutter (not loaded),	\$25.00
Transparent Film Cartridge, 12 exposures, 5×4 ,90
Do., 6 exposures,45
Do., "Double-Two" Cartridge, 4 exposures,30
Glass Plate Adapter, with ground glass,	2.50
Double Glass Plate Holders, each,	1.00

No. 5 Cartridge Kodak.

For rectangular pictures, 7×5 inches; capacity, 12 exposures without reloading; size of camera, $3\frac{3}{8} \times 8\frac{1}{2} \times 10$ inches; weight, 4 pounds, 8 ounces; length of focus of lens, $8\frac{1}{2}$ inches.

No. 5 Cartridge Kodak, with rapid rectilinear lens and Eastman Triple Action Pneumatic Shutter (not loaded),	\$35.00
Transparent Film Cartridge, 12 exposures, 7×5 ,	1.60
Do., 6 exposures,80
Do., "Double-Two" Cartridge, 4 exposures,55
Glass Plate Adapter, with ground glass,	3.00
Double Glass Plate Holders, each,	1.25



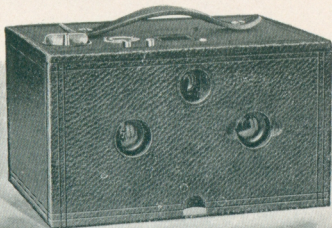
Panoram-Kodaks.

NO mechanism has yet been made that would accomplish every kind of work. The bicycle cannot draw an express train, nor can the giant express locomotive follow the sinuous windings of a cycle path. No one camera can occupy every niche in the house of photography. For certain work the Panoram-Kodaks are unequaled; they open up a new phase in picture taking. Pictures of broad landscapes, river and marine views made with these instruments have a breadth and beauty not attainable with the ordinary camera. Vertical pictures of high water falls and mountain peaks give delightful effects, while the great speed of the swinging lens and shutter, combined with the wide scope of view, make them unequaled in the taking of out-door group pictures, the subjects in such cases being arranged in a semi-circle.

These instruments have carefully tested lenses, improved two-speed shutters, spirit levels, brilliant finders by means of which the entire view may be examined by simply swinging the camera, before exposure, so as to take in the full scope of view as indicated by the V shaped lines on top of camera. Covered with the finest black morocco, have nicked fittings and are beautifully finished.

These instruments are, of course, not intended for taking timed exposures or interiors.

	No. 1 2¼x7 in.	No. 4 3½x12 in.
Panoram-Kodak (not loaded),	\$10.00	\$20.00
Transparent Film Cartridge, (No. 1, 6 exposures; No. 4, 5 ex.),40	.90
Do., No. 1, 3 exposures; No. 4, 2 exposures,20	.45
Black Sole Leather Carrying Case, with shoulder strap,	1.75	2.00



The No. 2 Stereo Kodak.

THESSE instruments may be said to resemble in model the well known Bulls-Eye Kodaks, but are equipped with twin Rapid Rectilinear lenses and a modification of our automatic shutter. By a simple blind, which cuts off the light from one of the lenses, they may also be used for single exposures, $3\frac{1}{2} \times 3\frac{1}{2}$ inches.

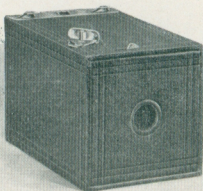
The Stereo Kodaks have sets of three stops, square, brilliant finder, spirit level, socket for tripod screw, are covered with fine seal grain leather and have heavily nickeled fittings. They give correct stereoscopic effects and are high grade in every particular.

Those who are familiar with stereoscopic work will readily appreciate the advantages of film over plates, especially where a large number of prints is to be made. With film, the negatives may be cut apart and transposed and any number of prints made from them on die cut paper—the trimming and transposing of prints being entirely done away with.

The No. 2 Stereo Kodaks make the standard size ($3\frac{1}{4} \times 6$) stereoscopic pictures, having a capacity for six stereoscopic or twelve single exposures without reloading. Size of Kodak, $4\frac{3}{4} \times 6 \times 8\frac{1}{8}$ inches; weight, 2 lbs., 3 ozs. Focal length of lenses, $4\frac{3}{4}$ in.

THE PRICE.

No. 2 Stereo Kodak, fitted with pair of rapid rectilinear lenses, not loaded,	\$15.00
Transparent Film Cartridge, 6 stereo exposures (regular No. 2 Bulls-Eye 12 ex. cart.),60
Do., 3 exposures (No. 2 B.-E. 6 ex. cart.),30
Do., 2 exposures (No. 2 B.-E. "Double-Two" cart.),20
Black Sole Leather Carrying Case, with strap,	2.00



No. 1 Brownie Camera.

THE Brownie Cameras have not only proven themselves to be wonderfully reliable and accurate little instruments but have demonstrated that photography—as simplified by the Cartridge system—is readily within the grasp of the school boy and the school girl. These facts have been amply proven by the high average of work submitted in the Brownie photographic contest in which only boys and girls under sixteen years of age were permitted to compete.

The No. 1 Brownie Cameras make pictures $2\frac{1}{4} \times 2\frac{1}{4}$ inches, loading in daylight for six exposures. They have $3\frac{1}{4}$ inch focus meniscus lenses, and the Eastman Rotary shutter described on page 5, the shutter, however, having one stop only. These instruments measure $3 \times 3\frac{1}{8} \times 4\frac{7}{8}$ inches and weigh 8 ounces.

V shaped lines on top of camera give the scope of view, showing just what will appear in the picture, or a Brownie finder (detachable) may be provided for only 25 cents.

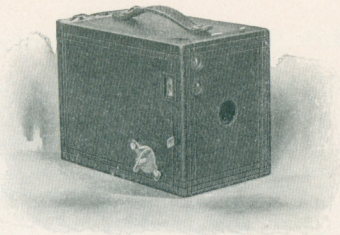
The Brownie finder can be attached or detached in an instant, a metal clamp clasping the top of camera and holding it securely in position.

The Brownies are strongly made, are covered with imitation leather and have nickeled fittings.

Forty-four page instruction book free with every instrument.

THE PRICE.

No. 1 Brownie Camera, for $2\frac{1}{4} \times 2\frac{1}{4}$ pictures,	\$1.00
Transparent Film Cartridge, 6 exposures, $2\frac{1}{4} \times 2\frac{1}{4}$,	.15
Brownie Finder, detachable,	.25
No. 1 Brownie Carrying Case, holds camera and finder,	.50



No. 2 Brownie Camera.

THE marvelously good work which has been accomplished by boys and girls with the No. 1 Brownie accounts for the fact that no other camera ever had so large a sale in so short a time. They were not only cheap in price, but they were simple to operate and *they made good pictures*. In the No. 2 we have extended the Brownie idea to a camera which makes pictures $2\frac{1}{4} \times 3\frac{1}{4}$ inches. It has the Eastman Rotary shutter and set of three stops described on page 5, has a fine meniscus lens of $4\frac{1}{2}$ inch focus, has two finders, one for vertical and one for horizontal exposures, and has a capacity of six exposures without reloading.

The No. 2 Brownie Cameras measure $3\frac{1}{4} \times 4 \times 5\frac{5}{8}$ inches; weigh 13 ounces; are covered with fine imitation leather; have handsomely nickeled fittings and are well made in every particular.

These little instruments may, if desired, be fitted with the Kodak Portrait Attachment described on page 30, by means of which they will make large bust photographs.

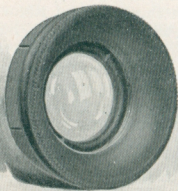
THE PRICE.

No. 2 Brownie Camera, for $2\frac{1}{4} \times 3\frac{1}{4}$ pictures,	\$2.00
Transparent Film Cartridge, for 6 exposures,		
$2\frac{1}{4} \times 3\frac{1}{4}$,20
No. 2 Brownie Carrying Case, with shoulder strap,75
No. 2 Brownie Portrait Attachment,50

Kodak Portrait Attachments.

THE Kodak Portrait Attachments greatly increase the value of the small fixed focus instruments by adapting them to the making of large bust pictures. By their use any one of the cameras named below will make head and shoulder pictures equaling in size an ordinary mantello photograph. These attachments are simply extra lenses which slip on over the lens hood or are inserted in the opening in the front board of camera as the case may be.

They in no way affect the operation of the Kodak except that they make it cut sharp at a distance of three and one-half feet and consequently throw more distant objects out of focus. They are, therefore, to be used for bust portrait work only. The possibilities of the smaller Kodaks in portraiture are attractively set forth in "Pocket Kodak Portraiture," an instructive little booklet profusely illustrated by Rudolf Eickemeyer, Jr., and containing a number of his most charming studies of child life. Free at any Kodak dealer's, or by mail.



*Kodak Portrait Attachment for
No. 2 Bulls-Eye.*

Kodak Portrait Attachments are made for the following instruments.

No. 1 Folding Pocket Kodaks, No. 1A Folding Pocket Kodaks, No. 2 Folding Pocket Kodaks, No. 3 Folding Pocket Kodaks, No. 2 Bulls-Eye Kodaks, No. 2 Bulls-Eye Special Kodaks, No. 2 Bullet Kodaks, No. 2 Bullet Special Kodaks, No. 2 Flexo Kodaks, No. 2 Brownie Cameras.

Price of Attachment to fit either of above instruments, 50 cents.

Be sure and give exact designation of instrument when ordering.

Special Lens and Shutter Equipments.

IN place of the excellent regular equipment with which we furnish the Cartridge Kodaks and the No. 3 Folding Pocket Kodaks these instruments can be equipped with the new Bausch & Lomb Plastigmat lenses if the customer so desires. We guarantee these lenses to be fully the equal of any Anastigmat lenses made by other manufacturers.

THE PRICE.

No. 3 Folding Pocket Kodak, Rapid Rectilinear lens, equivalent focus, 5 inches; speed, <i>f.</i> 8; and B. & L. Automatic Shutter,*	\$27.50
No. 3 Folding Pocket Kodak, Bausch & Lomb Plastigmat lens No. 1, equivalent focus, 5 inches; speed, <i>f.</i> 6.8; and B. & L. Automatic Shutter,*	59.50
No. 3 Cartridge Kodak, Bausch & Lomb Plastigmat lens No. 1, equivalent focus, 5 inches; speed, <i>f.</i> 6.8; and B. & L. Automatic Shutter,*	57.00
No. 4 Cartridge Kodak, Bausch & Lomb Plastigmat lens No. 2, equivalent focus, 6¼ inches; speed, <i>f.</i> 6.8; and B. & L. Automatic Shutter,*	67.50
No. 5 Cartridge Kodak, Bausch & Lomb Plastigmat lens No. 3, equivalent focus, 7½ inches; speed, <i>f.</i> 6.8; and B. & L. Automatic Shutter,*	84.50

*A full description of this Shutter is given on page 8.

Wide Angle Lenses.

Regularly equipped Cartridge Kodaks may be fitted with our wide angle Kodak lenses at a trifling cost. These lenses are mounted in cells which fit the Eastman Triple Action shutters, and are, therefore, interchangeable with the Rapid Rectilinear lenses furnished with the Cartridge Kodaks. The W. A. Kodak lenses are rectilinear, have a speed of *f.* 16 and are carefully tested. With each one we furnish a leather case and a focusing scale for attaching to the camera bed.

THE PRICE.

No. 3 (3¼ x 4¼) Wide Angle Kodak Lens, equivalent focus, 3½ inches; speed, <i>f.</i> 16,	\$5.00
No. 4 (4 x 5) Wide Angle Kodak Lens, equivalent focus 4½ inches; speed, <i>f.</i> 16,	5.00
No. 5 (5 x 7) Wide Angle Kodak Lens, equivalent focus, 5½ inches; speed, <i>f.</i> 16,	7.50



Developing and Printing Outfits.

EASTMAN'S A B C DEVELOPING AND PRINTING OUTFIT for developing, printing and finishing 24 4 x 5, 2½ x 4¼ or 3¼ x 4¼ or 96 1⅝ x 2½ pictures.

1 Eastman Improved	½ lb. Hyposulphite	
Candle Lamp,	Soda,	\$0.07
1 4 x 5 Printing Frame,	½ oz. Bromide Potas-	
" Glass for do.,	sium,10
1 Glass Beaker,	2 doz. 4 x 5 Solio Paper,25
1 Stirring Rod,	2 ozs. Solio Toning Solu-	
4 4½ x 5½ Developing	tion,15
Trays,	1 oz. Glycerine,05
½ doz. Developing Pow-	Instruction Book,10
ders,		
		<hr/>
		\$2.09

Price, complete, neatly packed, \$1.50.

EASTMAN'S BULLS-EYE DEVELOPING AND PRINTING OUTFIT, complete, for developing and printing 12 pictures 3½ x 3½. Similar to above outfit, but containing 1 doz. 3½ x 3½ Solio paper and smaller quantities of chemicals.

Price, complete, neatly packed, \$1.00.

SPECIAL 5 X 7 DEVELOPING AND PRINTING OUTFIT, complete, for developing and printing 24 pictures 5 x 7.

Price, complete, neatly packed, \$2.00.

BROWNIE DEVELOPING AND PRINTING OUTFIT, complete, for developing 24 pictures 2¼ x 2¼ and printing on Dekko Paper, \$.75

NOTE—These outfits cannot be shipped by mail.

OUR complete illustrated Kodak catalogue, listing the full line of Kodaks, Kodak supplies and photographic papers, may be had for the asking, of any photographic stock dealer, or by mail.

The prices in this booklet are strictly net, except to regular dealers who carry our goods in stock.

For the convenience of our customers we recommend that they make their purchases from a dealer in photographic goods, as by so doing they can save both time and expressage.

EASTMAN KODAK CO.

Rochester, N. Y.

BROWN, THOMSON & CO.,
Hartford, Conn.