

Give a

KODAK

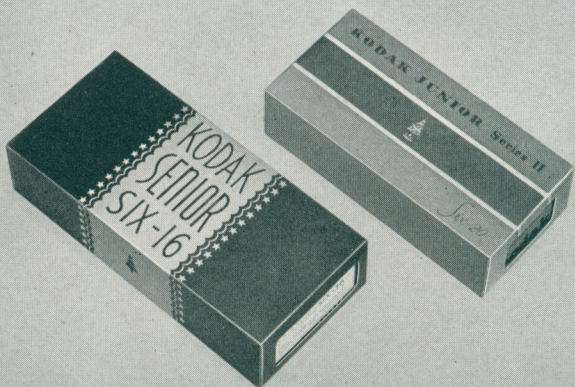
THE GIFT THAT REMEMBERS

Give a KODAK

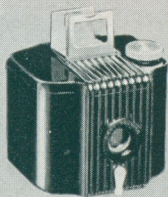
THIS year, more than ever before, the gift that's in tune with the times is a Kodak. For public interest in picture making is at an all-time high. Everywhere you go you see people taking snapshots—and having a wonderful time at it, too. That's why you'll give happiness if you give a Kodak—the gift that remembers.

Picture taking today is a 24-hour pastime. Any Eastman camera—with Kodak "SS" Film and two or three Mazda Photoflood lamps (No. 1 for *f.6.3* or faster lenses, No. 2 for slower ones) in inexpensive Kodak Handy Reflectors—gets good snapshots at night.

Stop at the store and see the cameras in this booklet. All of them come with colorful holiday wrappings—some in smart boxes with room for two rolls of Kodak Film.

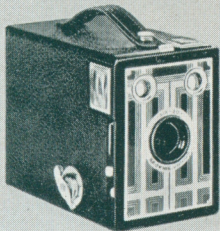


MODESTLY PRICED CAMERAS



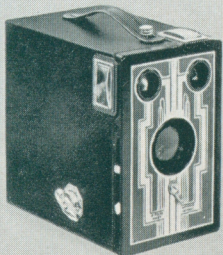
BABY BROWNIE

For the boy or girl who has been wanting to take pictures, Baby Brownie is just the thing. And older folks like it, too. Gives good results without fuss or bother—eight $1\frac{5}{8}$ " x $2\frac{1}{2}$ " pictures on a roll. Body is molded, with black gloss finish. Compact and easy to load. Meniscus lens, Rotary shutter, folding eye-level finder. Price, \$1.



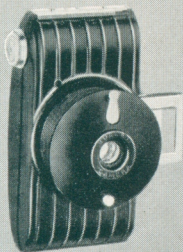
BROWNIE JUNIORS

Good looking... simple to use... inexpensive. Brownie Juniors have two extra-large ground-glass finders, Eastman Meniscus lens, Rotary shutter. The Six-16 Brownie Junior, for $2\frac{1}{2}$ " x $4\frac{1}{4}$ " pictures, is \$3; the Six-20 ($2\frac{1}{4}$ " x $3\frac{1}{4}$ ") is \$2.50.



SIX-16 AND SIX-20 BROWNIES

One of these models is the best buy you can make in the box camera field. Both have Eastman Diway lens which insures sharp focus for either near or distant subjects. The brilliant finders are extra-large—the shutters dependable. Six-16 ($2\frac{1}{2}$ " x $4\frac{1}{4}$ ") is \$4; Six-20 ($2\frac{1}{4}$ " x $3\frac{1}{4}$ "), \$3.25.



BULLET CAMERA

A new camera with unusual features for its price. Body is of black, molded material. Ingenious spiral lens mount... eye-level finder... removable back... adjustment for snapshots or "bulb" exposures... focus is fixed. Takes eight $1\frac{5}{8}$ " x $2\frac{1}{2}$ " pictures on a roll. Price, \$2.85.

EASTMAN'S 1937 GIFT LINE

JIFFY KODAK V.P.

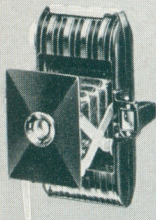
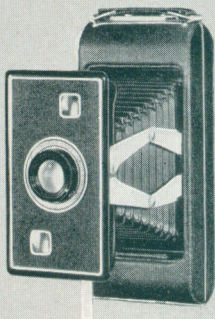
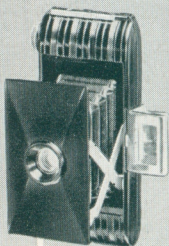
It's the famous five-dollar Kodak completely restyled. Its light-weight body is of black, molded material. Has folding, direct-view finder...button-activated "pop-out" front...Kodak Doublet lens...built-in shutter. Jiffy Kodak V.P. uses No. 127 Kodak Film, gets 8 pictures— $1\frac{5}{8}$ " x $2\frac{1}{2}$ "—per roll. \$5 is the price.

JIFFY KODAKS, SERIES II

Brand new models of the popular Jiffys. They have hinged backs, a feature previously found only on higher priced Kodaks. The new, convenient film-winding knob has a satin finish, as does the new sliding back latch. Twindar lens...two-point focus... "pop-click" front. Jiffy Kodak Six-16, Series II ($2\frac{1}{2}$ " x $4\frac{1}{4}$ "), is \$10; the Six-20 ($2\frac{1}{4}$ " x $3\frac{1}{4}$ "), \$9.

KODAK BANTAMS

They're small as the palm of your hand—yet, through a new idea in photo-finishing methods, lead to pictures larger than themselves. "Pop-out" front...molded case...automatic exposure centering device...fixed focus...fixed shutter speed. Two models: one with f.6.3 lens, \$10; the other with Kodak Doublet lens, \$6.

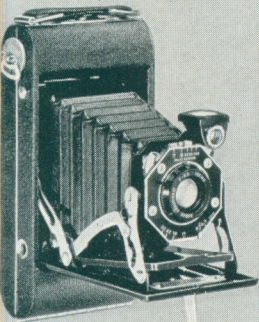


INCLUDES MANY NEW MODELS

KODAK JUNIORS, SERIES II

These trim, new models offer three different lens equipments, both in the Six-16's ($2\frac{1}{2}'' \times 4\frac{1}{4}''$) and Six-20's ($2\frac{1}{4}'' \times 3\frac{1}{4}''$). All have direct-view, eye-level finders, as well as waist-level type... push-button bed latch... one-finger bed release... buffed nickel fittings... hinged back.

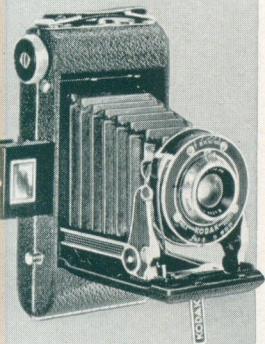
The Six-16, with single lens, is \$11; with Bimat lens, \$13.50; with Kodak Anastigmat *f.6.3* lens, \$15.75. The Six-20, with single lens, \$9.25; with Bimat lens, \$11.75; with Kodak Anastigmat *f.6.3* lens, \$14.



KODAK SENIORS

Fine, yet moderately priced cameras of latest design and outstanding ability. New shutter release on body minimizes camera movement... push-button, self-erecting front... one-finger bed release... optical direct-view eye-level finder.

Kodak Senior Six-16 ($2\frac{1}{2}'' \times 4\frac{1}{4}''$) with Bimat lens and Kodex shutter is \$17.50; with Kodak Anastigmat *f.6.3* lens and Kodex shutter, \$22; with Kodak Anastigmat *f.4.5* lens and Kodamatic shutter, \$33.50. Prices for the corresponding Six-20 ($2\frac{1}{4}'' \times 3\frac{1}{4}''$) models are \$16, \$19.50, and \$29.50.



STRIKING EXAMPLES OF

KODAK SPECIALS

Six new de luxe Kodak Specials, all with $f.4.5$ lenses and fast shutters, give discriminating picture takers a chance to have an instrument exactly suited to their needs.

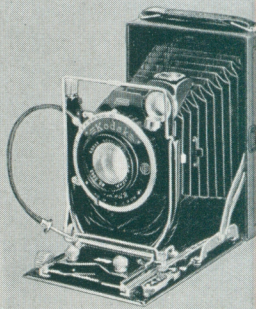
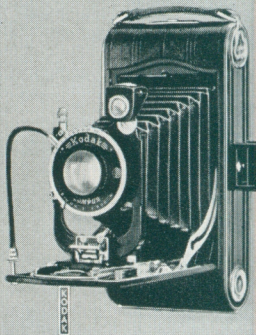
Kodak Special Six-16 ($2\frac{1}{2}'' \times 4\frac{1}{4}''$) with Kodak Anastigmat $f.4.5$ lens and Kodamatic shutter, \$36.50; with Kodak Anastigmat *Special* $f.4.5$ lens and Kodamatic shutter, \$41; with Kodak Anastigmat *Special* $f.4.5$ lens and Compur-Rapid shutter, \$48.50. Prices for corresponding Six-20 ($2\frac{1}{4}'' \times 3\frac{1}{4}''$) models are \$33, \$37.50, and \$45.

3A KODAKS, SERIES II

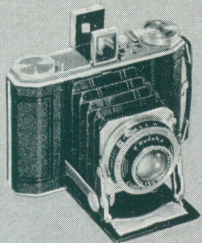
Rugged cameras taking large $3\frac{1}{4}'' \times 5\frac{1}{2}''$ pictures. Beautifully designed, covered in creased cowhide. Push-button bed release... hinged back... handy focusing lever. One model, with Kodak Anastigmat $f.6.3$ lens and Diodak shutter, sells at \$45. The other, with Kodak Anastigmat $f.4.5$ lens... Compur shutter... both waist-height and eye-level finders... rising, falling front, is priced at \$75.

KODAK RECOMARS

Adaptable to a variety of negative materials—film packs, cut film, and plates. Fitted with Kodak Anastigmat $f.4.5$ lens and Compur shutter. Have double extension bellows and bed... ground-glass focusing back... wire frame finder. Recomar 33 (with pack kit $3\frac{1}{4}'' \times 4\frac{1}{4}''$), \$63; Recomar 18 (pack $2\frac{1}{4}'' \times 3\frac{1}{4}''$), \$54.



THE CAMERA MAKER'S ART

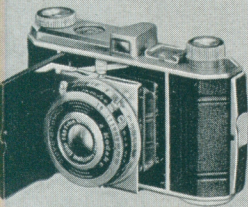


KODAK DUO SIX-20, SERIES II

Takes album-sized pictures— $1\frac{5}{8}''$ x $2\frac{1}{4}''$ —16 on a roll (enlarge beautifully, if desired). Kodak Anastigmat *f*.3.5 lens, 1/500 Compur-Rapid shutter, body shutter release, satin chrome trimmings. Sells for \$57.50.

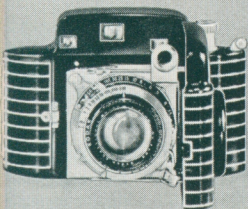
KODAK RETINA

Takes 18 or 36 black-and-white exposures, readily enlarged, on a magazine roll. Super lens—the new Kodak Anastigmat EKTAR *f*.3.5, 1/500 Compur-Rapid shutter. May also be used for pictures in full color* with the new Kodachrome Film. Price, \$57.50.



KODAK BANTAM SPECIAL

A new kind of miniature "still" camera . . . beautiful . . . efficient. Lightning-fast Kodak Anastigmat EKTAR *f*.2.0 lens, 1/500 Compur-Rapid shutter. Coupled range finder. Die-cast machined aluminum body. Takes 8 exposures on a roll of Kodak Panatomic, Super X, or Kodachrome (for full-color pictures*) Film. Eastman's brilliant miniature, for \$110. Be sure to look it over.



*May be viewed as they are, or shown on the home screen with Kodaslide Projector—Eastman-made—\$48.50.

THESE CAMERAS TAKE MOVIES

MAGAZINE CINÉ-KODAK

This outstanding 16 mm. home movie camera has many highly desirable features, including effortless, 3-second loading by magazine. Standard with this camera is a Kodak Anastigmat $f.1.9$ lens, interchangeable with seven accessory lenses. The price, with the $f.1.9$ lens, is \$125; including combination carrying case, \$137.50.

CINÉ-KODAK "K"

Complete—yet simple to use. Gets brilliant 16 mm. movies at the touch of a button. Loads with 100 feet of film. Like all Eastman home movie cameras, takes beautiful full-color Kodachrome movies, as well as those in black-and-white. With $f.1.9$ lens, \$88.50; including carrying case, \$100.

CINÉ-KODAK "E"

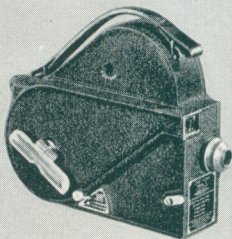
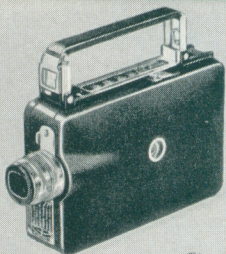
A remarkable 16 mm. camera for the price. It is fixed-focus, and operates at any of three speeds. Exclusive with the "E" is a new-type enclosed eye-level finder, through which you also ascertain film consumption for a given scene, and amount of film still unexposed. Price, with $f.3.5$ lens, \$48.50; case, \$7.50 extra.

KODASCOPE "L"

"Tailor-made" projection at its best. Eastman's finest 16 mm. projector. May be used with a variety of lenses and lamps. D.C. or A.C. Without lamp, but with 2-inch $f.1.6$ lens, \$183.

KODASCOPE "EE"

Gives you a choice of five lenses and three lamps. Extremely cool and quiet in operation. For 16 mm. movies. D.C. or A.C. Without lamp, but with 2-inch $f.2.5$ lens, \$53.

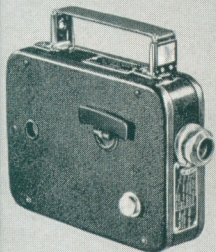


IN BLACK-AND-WHITE OR COLOR



CINÉ-KODAK EIGHT, MODEL 20

This camera (for 8 mm. movies) is not only inexpensive to buy, but economical to use. Takes 20 to 30 movie scenes, each as long as the average scene in the newsreels, on a \$2.25 roll. And this price includes the "finishing" of the film in Eastman laboratories. Kodachrome movies, too, at only a few cents more a shot. With Kodak Anastigmat *f.3.5* lens, \$34.50.



CINÉ-KODAK EIGHT, MODEL 25

Except for the speedier *f.2.7* Kodak Anastigmat lens this camera is identical with the Model 20, above. The price is \$45.



CINÉ-KODAK EIGHT, MODEL 60

Fitted with an "ultra-fast" Kodak Anastigmat *f.1.9* lens, interchangeable with an *f.4.5* 1½-inch telephoto (\$37.50 extra) the Model 60 is finished in two-toned gray cowhide and brilliant chromium. \$71.50; with case for camera and accessories, \$82.50. For both black-and-white and Kodachrome low-cost movies.

KODASCOPE EIGHT, MODEL 20

For use on 60-cycle, 105- to 125-volt A.C. lines only. \$26.

KODASCOPE EIGHT, MODEL 50

Operates on A.C. or D.C. lines. Unusually brilliant. \$39.

KODASCOPE EIGHT, MODEL 80

For either A.C. or D.C. Super-brilliant 300-watt lamp. Highly efficient cooling system. Remarkably quiet. \$97.50, with case.

EASTMAN PHOTO ACCESSORIES

KODAFLECTOR

Improves greatly the efficiency of photo bulbs. Complete, \$5.

KODAK HANDY REFLECTOR (Not Illustrated)

Simple, effective cardboard reflectors; special holders. 2 for 25c.

KODAK POCKET RANGE FINDER

Eliminates the guesswork with any folding camera. \$7.

KODAK METAL TRIPODS

Fit any standard tripod socket. Legs are of light, rigid, telescoping brass tubing. 3 models—one as low as \$2.75.

KODAPOD AND OPTIPOD

For standard tripod sockets. May be attached to any handy object to hold the camera steady during exposure. Kodapod, \$1.75; Optipod, \$1.25.

KODAK SELF TIMER

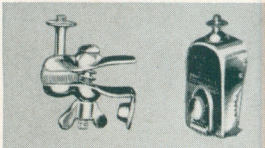
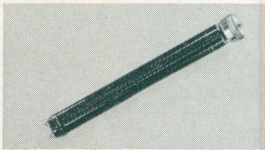
For any camera with a cable release. Clicks the shutter automatically. Allows camerist to take his own picture. \$1.25.

LENS ATTACHMENTS

Fit over the regular camera lens to give unusual results. Kodak Portrait Attachment, 50c, 75c, and \$2. Other types of attachments are as low as \$1.

"HOW TO MAKE GOOD PICTURES"

Latest revised edition of this helpful publication. Hundreds of pictures, diagrams. Price, 50c.



THAT MAKE THOUGHTFUL GIFTS



DARKROOM OUTFITS

Supplies for developing and printing at home. Kodak Darkroom Outfit No. 1 is \$8.75; No. 2, \$3.25.



KODAK HOME ENLARGER

Will take negatives from half-vest-pocket size up to and including $3\frac{1}{4} \times 4\frac{1}{4}$ -inch and 9×12 -centimeter. Costs but \$16.50.



KODAK ADJUSTABLE FILM TANK

Has remarkable loading ease and wide adaptability—assures clean and uniform development. Stainless steel, with molded cover. Price, \$7.50.



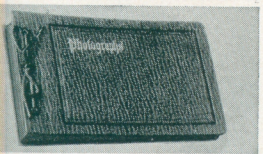
KODAK OIL COLORS

Outfit, at \$3.75, includes 15 tubes of color, all necessary accessories and instruction book. Also an 8-tube set for \$2. Water colors: Velox Water Color Outfit, \$1.



KODAK HAND STRAP

Can be attached to any camera having standard tripod socket. Fastens to camera by means of swivel, knurled knob. Price 50c—Kodak Neck Strap, 75c.



EASTMAN ALBUMS

Attractive...durable...easy to use. Many styles in a wide price range. Juno Albums (illustrated) are 90c to \$2.25.



"ELEMENTARY PHOTOGRAPHY"

A complete course in photography for \$1. Takes the reader—through a series of practical exercises—from the rudiments to the more advanced phases. Has 253 pages. Well illustrated.

INCLUDE A FEW ROLLS OF KODAK FILM



There's a type of Kodak Film that's just right for any kind of picture taking.

VERICHROME—the double-coated film that guards against over- and underexposure—for all-around snapshooting.

"SS" PAN—the lightning-fast film—for outdoor shots in poor

light, or indoor snapshots with photo bulbs.

PANATOMIC—the film with a grain of almost atomic fineness—for superb enlargements.

KODACHROME—for gorgeous color movies with any Ciné-Kodak, or "stills" with Kodak Bantam Special; Kodak Retina and similar miniature cameras.

Klein and Goodman
18 South Tenth Street
PHILADELPHIA, PA.