

KODAK

# ALL THE STORY

✓

YOU don't have to stop with the picture; you can have as well the date and title, written on the film at the time—that's the way with the Autographic Kodak. It's an exclusive Eastman feature.

You get *all* the story—your negatives are records complete and permanent. And autographic film costs no more.

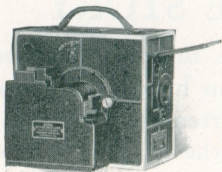
The Kodaks (all autographic) and Brownies (folding models are autographic) briefed in the following pages are all simple, sure picture-makers. You'll make easily and well the winter story of you and yours.

Look over these descriptions—better still see the actual cameras at your Kodak dealer's. There's a model to suit your fancy and fit your purse.

EASTMAN KODAK COMPANY  
Rochester, N. Y.

December, 1924.

# MOTION PICTURES



## Ciné-Kodak

Makes  
Motion Pictures

**W**ITH this Eastman-made outfit you can keep in *motion* pictures the story of your family, your friends, your sports and travels.

It's all as easy as making "still" snapshots with a Brownie. Train the Ciné-Kodak lens, press the button and the motor cranks the camera. Turn the switch on the Kodoscope and you're showing on your own screen in your own home "movies" you made yourself.

In addition to personal motion pictures, dramas, comedies, travelogs, educational films, and juvenile pictures for the children may be rented through Kodoscope Libraries, Inc., for projection in home, club, school or church.

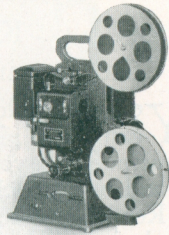
**ECONOMY:** The operating expense of the Ciné-Kodak is less than 20 per cent of that of an outfit using standard width film. The development and reversal of Ciné-Kodak Film are done without extra cost at the Eastman laboratory in Rochester, New York, Chicago or San Francisco. *You press the button; we do the rest.*

# THE KODAK WAY

## Kodascope

### Projects

### Motion Pictures



#### DESCRIPTIVE DETAILS

##### *Ciné-Kodak*

SIZE: 8 x 4<sup>5</sup>/<sub>8</sub> x 8<sup>5</sup>/<sub>8</sub> inches.  
 WEIGHT: 7<sup>1</sup>/<sub>4</sub> lbs. CAPACITY: 100 feet (4 minutes operation). LENS: Kodak Anastigmat f.3.5.  
 FINISH: Body of aluminum with Japan crystal finish. FINDERS: Top and rear.

##### *Kodascope*

SIZE: 18<sup>1</sup>/<sub>2</sub> x 14<sup>7</sup>/<sub>8</sub> x 10<sup>3</sup>/<sub>8</sub> inches. WEIGHT: 18 lbs.  
 CAPACITY: 400 feet (16 minutes projection). LENS: 50 mm. focus, projecting 30 x 40-inch picture at 18 feet. FINISH: Body of metal with Japan crystal finish. MISCELLANEOUS: Electrically driven on direct or alternating current from 105 to 125 volts.

#### *Prices*

Ciné-Kodak . . . . .	\$125.00
Kodak Motor Drive Unit, with battery and Charging Outfit . . . . .	25.00
Kodascope and Splicer . . . . .	160.00
Tripod . . . . .	25.00
Screen . . . . .	25.00
Outfit as above, with <i>either</i> motor drive unit or hand crank and tripod . . . . .	335.00
Ciné-Kodak Film, 100-foot Rolls . . . . .	6.00
50-foot Rolls . . . . .	4.00
(Price includes finishing and return transportation)	
Duplicate Prints, 100-foot length . . . . .	6.00
50-foot length . . . . .	4.00
Leather Case for Ciné-Kodak and Tripod Head . . . . .	18.00
Mahogany Case for Kodascope . . . . .	25.00
Extra Battery for Motor Drive Unit . . . . .	8.00

*The prices of camera and film include the Excise Tax*

# Vest Pocket Autographic KODAKS

## Regular and *Special* Models

**Y**OU'LL wonder how a camera so small can make pictures so well. Put it in your pocket—your *vest* pocket if you like—and bring back all out-doors.

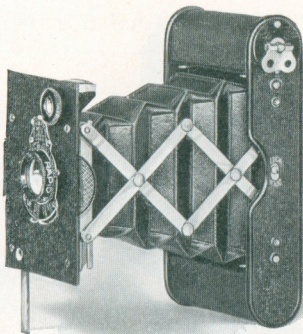
Regular models are out, opened, and ready in a moment. You have a choice of two fixed focus lenses.

*Special* models focus with a turn of the lens rim for distances from 3 to 100 feet, enabling you to make sharp focus “close-ups” without using Kodak Portrait Attachment. And the lens, Kodak Anastigmat *f.6.9* or *f.7.7*, is famous for its sharp-cutting quality. Your negatives will yield excellent enlargements.

### *Prices*

VEST POCKET AUTOGRAPHIC KODAK, Regular (fixed focus) with Meniscus Achromatic Lens . . . . .	\$6.50
With Rapid Rectilinear Lens. . . . .	8.00
VEST POCKET AUTOGRAPHIC KODAK, <i>Special</i> (focusing) with Kodak Anastigmat <i>f.6.9</i> Lens . . . . .	15.00
With Kodak Anastigmat <i>f.7.7</i> Lens . . . . .	13.00
Leather Case for Vest Pocket Kodak . . . . .	.90
Leather Case with Carrying Strap . . . . .	1.00
Belt Carrying Case (russet leather) . . . . .	1.25
Autographic Film Cartridge, 8 exposures (No. A 127)	.25
Vest Pocket Cable Release Attachment . . . . .	.50
Vest Pocket Kodak Tripod Adapter . . . . .	.50
Kodak Portrait Attachment for Meniscus Lens . . . . .	.50
Kodak Portrait Attachment for R. R. Lens (p. 32)	.75
Kodak Self Timer (see page 32) . . . . .	1.25

*The prices of cameras and film include the Excise Tax*



### DESCRIPTIVE DETAILS

SIZE OF PICTURES:  $1\frac{5}{8} \times 2\frac{1}{2}$  inches.

SIZE OF KODAK:  $1 \times 2\frac{3}{8} \times 4\frac{3}{4}$  inches.

CAPACITY WITHOUT RELOADING: 8 exposures.

WEIGHT: 11 ounces.

FOCUS: Regular, fixed; *Special*, adjustable.

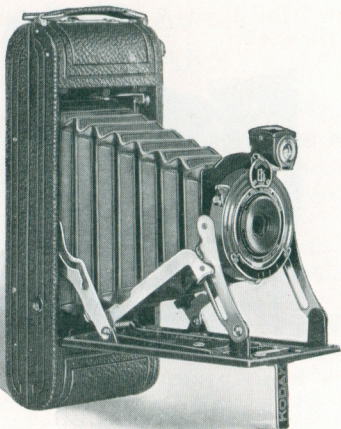
LENSES: Regular, with Meniscus Achromatic or Rapid Rectilinear; *Special*, with Kodak Anastigmat  $f.7.7$  or  $f.6.9$ ,  $3\frac{1}{2}$  inch focus.

SHUTTER: Kodak Ball Bearing No. 0 with finger release only. (Cable release attachment sold separately.)

SPEEDS:  $1/25$ ,  $1/50$  second; time and "bulb" actions.

FINDER: Brilliant, reversible.

FINISH: Metal parts in nickel and black enamel. Black bellows. Autographic feature. All metal body. Regular, with Japan crystal finish; *Special*, covered with Morocco grain leather.



Nos. 1 and 1A  
Pocket KODAKS, Series II  
*Fixed Focus Models*

**S**NAP, the camera's opened up; *click*, the picture's on the film. The Self-erecting Front puts the lens in place as the camera bed is dropped. You'll catch many a fleeting picture that would otherwise be lost.

And tested lens and dependable shutter mean prints you're proud to show.

No. 1 for  $2\frac{1}{4}$  x  $3\frac{1}{4}$  inch pictures; No. 1A,  $2\frac{1}{2}$  x  $4\frac{1}{4}$ .

### DESCRIPTIVE DETAILS

SIZE OF PICTURES: No. 1,  $2\frac{1}{4}$  x  $3\frac{1}{4}$  inches; No. 1A,  $2\frac{1}{2}$  x  $4\frac{1}{4}$  inches.

SIZE OF KODAK: No. 1,  $1\frac{5}{16}$  x  $3\frac{1}{16}$  x  $6\frac{7}{16}$  inches; No. 1A,  $1\frac{9}{16}$  x  $3\frac{5}{16}$  x 8 inches.

CAPACITY WITHOUT RELOADING: No. 1, 6 exposures; No. 1A, 12 exposures.

WEIGHT: No. 1, 15 ounces; No. 1A, 23 ounces.

FOCUS: Fixed.

LENS: Meniscus Achromatic.

SHUTTER: Kodak Ball Bearing with finger release.

SPEEDS:  $1/25$ ,  $1/50$  and  $1/100$  second, as well as time and "bulb" actions.

FINDER: Brilliant; reversible for horizontal or vertical pictures.

BODY: Aluminum.

COVERING: No. 1, Levant grain leather; No. 1A, fine seal-grain leather.

FINISH: Metal parts in nickel and black enamel. Black bellows.

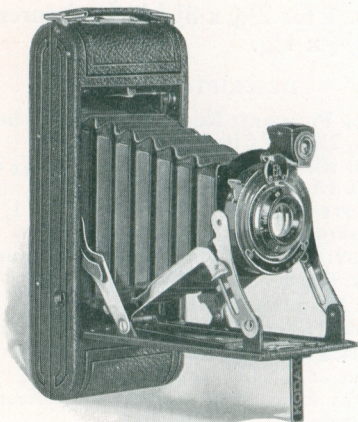
MISCELLANEOUS: Autographic feature. Two tripod sockets.

### Prices

	No. 1	No. 1A
POCKET KODAK, SERIES II (fixed focus), with Meniscus Achromatic Lens and Kodak Ball Bearing Shutter . . . .	\$13.50	\$15.00
Black Sole Leather Case, with strap . . .	2.50	3.00
Autographic Film Cartridge, 12 exposures (No. A 116) for No. 1A . . . . .		.60
Ditto, 6 exposures (No. A 120) for No. 1; (No. A 116) for No. 1A . . . . .	.25	.30
Kodak Portrait Attachment (see page 32)	.75	.75
Kodak Self Timer (see page 32) . . . . .	1.25	1.25
Cable Release . . . . .	.35	.35

*The prices of cameras and film include the Excise Tax*





Nos. 1 and 1A  
Pocket KODAKS Series II  
*Focusing Models*

**T**wo cameras that have three features:  
First, the lens is the famous sharp-cutting Kodak Anastigmat, *f.7.7*.

Then, Self-erecting Front snaps the lens to picture-making position as you pull the camera open.

Finally, the revolving lens mount puts correct focus at your finger-tips.

The choice of shutters includes Kodak Ball Bearing and the new, true-speed Diomatic—see “Descriptive Details” below.

### DESCRIPTIVE DETAILS

SIZE OF PICTURES: No. 1,  $2\frac{1}{4} \times 3\frac{1}{4}$  inches; No. 1A,  $2\frac{1}{2} \times 4\frac{1}{4}$  inches.

SIZE OF KODAK: No. 1,  $1\frac{5}{16} \times 3\frac{1}{16} \times 6\frac{7}{16}$  inches; No. 1A,  $1\frac{9}{16} \times 3\frac{5}{16} \times 8$  inches.

CAPACITY WITHOUT RELOADING: No. 1, 6 exposures; No. 1A, 12 exposures.

WEIGHT: No. 1,  $16\frac{1}{2}$  ounces; No. 1A, 26 ounces.

FOCUS: Adjustable.

LENS: Kodak Anastigmat, *f*.7.7—No. 1,  $4\frac{1}{4}$ -inch focus; No. 1A,  $5\frac{1}{4}$ -inch focus.

SHUTTER: Kodak Ball Bearing or Diomatic Shutter with finger release.

SPEEDS: Kodak Ball Bearing,  $\frac{1}{25}$ ,  $\frac{1}{50}$  and  $\frac{1}{100}$  second; Diomatic,  $\frac{1}{10}$ ,  $\frac{1}{25}$ ,  $\frac{1}{50}$ ,  $\frac{1}{100}$ ; both with time and “bulb” actions.

FINDER: Brilliant; reversible for horizontal or vertical pictures.

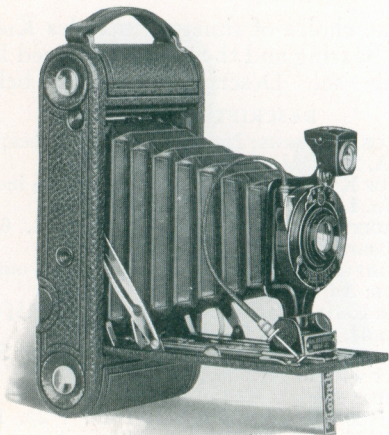
BODY: Aluminum. COVERING: No. 1, Levant grain leather; No. 1A, fine seal-grain leather.

FINISH: Metal parts in nickel and black enamel. Black bellows. MISCELLANEOUS: Autographic feature. Two tripod sockets.

### Prices

POCKET KODAK, SERIES II (focusing model), with Kodak Anastigmat <i>f</i> .7.7 Lens and Kodak Ball Bearing Shutter	No. 1	No. 1A
With Diomatic Shutter . . . . .	\$20.00	\$22.00
Black Sole Leather Case, with strap . .	2.50	3.00
Autographic Film Cartridge, 12 exposures (No. A 116) for No. 1A . . . . .		.60
Ditto, 6 exposures (No. A 120) for No. 1; (No. A 116) for No. 1A . . . . .	.25	.30
Kodak Portrait Attachment (see page 32)	.75	.75
Kodak Self Timer (see page 32) . . . . .	1.25	1.25
Cable Release . . . . .	.35	.35

*The prices of cameras and film include the Excise Tax*



## Nos. 1 and 1A Autographic KODAK Juniors

**C**OMPLICATION out, simplicity in, value up, price down. They're sturdy-of-build, easy-to-work, sure-fire. Everybody in the family can, and will, make good pictures right off the reel and for years to come.

That's the Autographic Kodak Junior. The models offered with Kodak Anastigmat lens  $f.7.7$  and multiple speed shutter are exceptionally "good buys."

## DESCRIPTIVE DETAILS

SIZE OF PICTURES: No. 1,  $2\frac{1}{4} \times 3\frac{1}{4}$  inches; No. 1A,  $2\frac{1}{2} \times 4\frac{1}{4}$ . SIZE OF KODAK: No. 1,  $1\frac{7}{16} \times 3\frac{5}{8} \times 6\frac{5}{8}$  inches; No. 1A,  $1\frac{5}{8} \times 3\frac{3}{4} \times 8$ .

CAPACITY: No. 1, 6; No. 1A, 12 exposures.

WEIGHT: No. 1,  $21\frac{1}{2}$  ounces; No. 1A,  $27\frac{1}{2}$  ounces.

FOCUS: Fixed (with Meniscus Achromatic Lens only); or Adjustable (with any listed lens).

LENSES: Meniscus Achromatic; Rapid Rectilinear, No. 1,  $4\frac{1}{4}$ -inch focus; No. 1A,  $5\frac{1}{4}$ -inch focus. Kodak Anastigmat, *f*.7.7, No. 1,  $4\frac{1}{3}$ -inch focus; No. 1A,  $5\frac{1}{4}$ -inch focus.

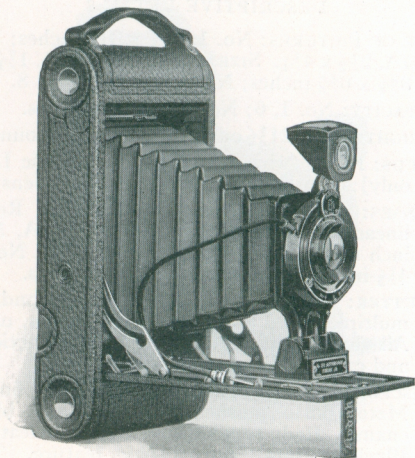
SHUTTER: Kodex, speeds  $1/25$ ,  $1/50$  second; or multiple speed with Anastigmat Lens, only. All shutters with time and "bulb" actions, and cable and finger releases.

MISCELLANEOUS: Brilliant, reversible finder. Metal parts finished in nickel and black enamel. Body covered with seal-grain leather. Black bellows. Autographic feature. Two tripod sockets.

## *Prices*

	No. 1	No. 1A
AUTOGRAPHIC KODAK JUNIOR (fixed focus) with Meniscus Achromatic Lens and Kodex Shutter . . . . .	\$12.00	\$13.00
Focusing Model with Meniscus Achromatic Lens and Kodex Shutter . . .	12.00	13.00
With Rapid Rectilinear Lens . . . . .	14.00	15.00
With Kodak Anastigmat Lens <i>f</i> .7.7 and multiple speed shutter . . . . .	23.00	24.00
Black Sole Leather Case, with strap . .	3.00	3.00
Autographic Film Cartridge, 12 exposures (No. A 116) for No. 1A . . . . .		.60
Ditto, 6 exposures (No. A 120) for No. 1; (No. A 116) for No. 1A . . . . .	.25	.30
Kodak Portrait Attachment (see page 32)	.75	.75
Kodak Self Timer (see page 32) . . . . .	1.25	1.25

*The prices of cameras and film include the Excise Tax*



## Nos. 2C and 3A Autographic KODAK Juniors

**F**AVORITES with tourists for their ample picture sizes—No. 2C,  $2\frac{7}{8}$  x  $4\frac{7}{8}$  inches; No. 3A,  $3\frac{1}{4}$  x  $5\frac{1}{2}$ , post card size—these cameras are nevertheless true Juniors and as such their popularity is widespread.

They are well made, well finished, well equipped—the kind of a camera you'll like better and better.

## DESCRIPTIVE DETAILS

**SIZE OF PICTURES:** No. 2C,  $2\frac{7}{8} \times 4\frac{7}{8}$  inches; No. 3A,  $3\frac{1}{4} \times 5\frac{1}{2}$ . **SIZE OF KODAK:** No. 2C,  $1\frac{3}{4} \times 4\frac{3}{8} \times 8\frac{3}{4}$  inches; No. 3A,  $1\frac{5}{16} \times 5\frac{1}{8} \times 9\frac{3}{4}$ .

**CAPACITY:** Both, 10 exposures.

**WEIGHT:** No. 2C, 34 ounces; No. 3A, 37 ounces.

**FOCUS:** Adjustable, with automatic focusing lock.

**LENSES:** Meniscus Achromatic; Rapid Rectilinear, or Kodak Anastigmat, *f*.7.7; No. 2C,  $5\frac{1}{2}$ -inch focus; No. 3A,  $6\frac{3}{4}$ -inch focus.

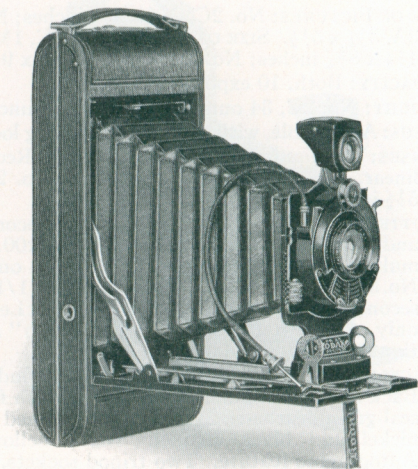
**SHUTTER:** No. 2C, Kodex,  $1/25$ ,  $1/50$  second; and Kodak Ball Bearing,  $1/25$ ,  $1/50$ ,  $1/100$ , or multiple speed with Anastigmat Lens, only. No. 3A, Kodak Ball Bearing  $1/25$ ,  $1/50$ ,  $1/100$  second; multiple speed, with Anastigmat Lens, only. All shutters with time and "bulb" actions, and cable and finger releases.

**MISCELLANEOUS:** Brilliant, reversible finder. Back and bed of aluminum, covered with fine seal-grain leather. Metal parts finished in nickel and black enamel. Black bellows. Autographic feature. Two tripod sockets.

### *Prices*

	No. 2C	No. 3A
AUTOGRAPHIC KODAK JUNIOR with Kodex Shutter, Meniscus Achromatic Lens	\$16.00	
With Rapid Rectilinear Lens . . . . .	18.00	
With Kodak Ball Bearing Shutter and Meniscus Achromatic Lens . . . . .		\$17.50
With Rapid Rectilinear Lens . . . . .		20.00
With Kodak Anastigmat Lens <i>f</i> .7.7 . . . . .	23.00	
With Kodak Anastigmat Lens <i>f</i> .7.7 and multiple speed shutter . . . . .	27.00	29.00
Black Sole Leather Case, with strap . . . . .	3.25	3.75
Autographic Film Cartridge, 10 exposures (No. A 130) for No. 2C; (No. A 122) for No. 3A . . . . .	.75	.90
Ditto, 6 exposures . . . . .	.45	.55
Kodak Portrait Attachment (see page 32)	.75	.75
Kodak Self Timer (see page 32) . . . . .	1.25	1.25

*The prices of cameras and film include the Excise Tax*



Nos. 1A and 2C  
KODAKS Series III

New Models. Mechanically precise; optically proficient—good picture-making is all the easier.

**T**HE Eastman-made shutter is the new Diomatic, speeds  $1/10$ ,  $1/25$ ,  $1/50$ ,  $1/100$  second—all clipped with greatest accuracy. The Eastman-made lens is the

famous Kodak Anastigmat *f.7.7*, focused by a new, quick-action lever.

The automatic shutter dial shows the exposure you want for the light you have.

All you could reasonably expect in a medium priced hand camera—and more.

### DESCRIPTIVE DETAILS

SIZE OF PICTURES: No. 1A,  $2\frac{1}{2} \times 4\frac{1}{4}$  inches; No. 2C,  $2\frac{7}{8} \times 4\frac{7}{8}$ . SIZE OF KODAK: No. 1A,  $1\frac{9}{16} \times 8 \times 3\frac{5}{16}$  inches; No. 2C,  $1\frac{9}{16} \times 8\frac{3}{4} \times 3\frac{7}{8}$ .

CAPACITY: No. 1A, 12; No. 2C, 10 exposures.

WEIGHT: No. 1A, 27 ounces; No. 2C, 35 ounces.

FOCUS: Adjustable only, with lever focusing device.

LENS: Kodak Anastigmat, *f.7.7*—No. 1A,  $5\frac{1}{4}$ -inch focus; No. 2C,  $5\frac{1}{2}$ -inch focus.

SHUTTER: Diomatic, with cable and finger releases.

SPEEDS:  $1/10$ ,  $1/25$ ,  $1/50$ ,  $1/100$  as well as time and "bulb" actions.

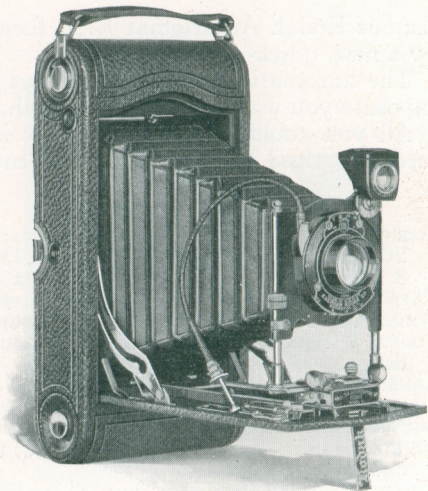
MISCELLANEOUS: Brilliant, reversible finder. Metal parts finished in nickel and black enamel. Body of aluminum, covered with baby crepe grain cowhide. Black bellows. Autographic feature. Two tripod sockets. Rising and falling front.

### Prices

	No. 1A	No. 2C
KODAK, SERIES III, with Kodak Anastigmat Lens, <i>f.7.7</i> , and Diomatic Shutter	\$30.00	\$33.00
Black Sole Leather Case, with strap . . .	3.00	3.50
Autographic Film Cartridge, 12 exposures (No. A 116) for No. 1A; 10 exposures (No. A 130) for No. 2C . . . . .	.60	.75
Ditto, 6 exposures (No. A 116) for No. 1A; (No. A 130) for No. 2C . . . . .	.30	.45
Kodak Portrait Attachment (see page 32)	.75	.75
Kodak Self Timer (see page 32) . . . . .	1.25	1.25

*The prices of cameras and film include the Excise Tax*





Nos. 3 and 3A

## Autographic KODAKS

**C**AMERAS with a picture-making range usually limited to much more expensive outfits. Standard equipment includes rising, falling and sliding front, an excellent lens and shutter, but greatest photographic significance attaches to this: with the Combination Back (extra), Kodak Cut Film, regular or *Super Speed*, may be used.

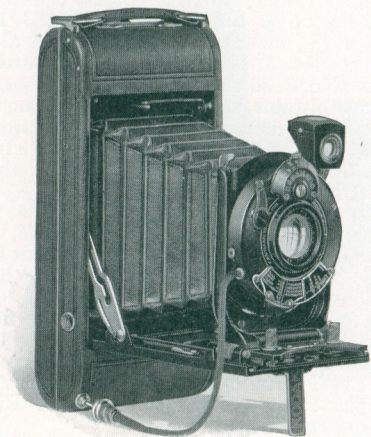
## DESCRIPTIVE DETAILS

**SIZE OF PICTURES:** No. 3,  $3\frac{1}{4} \times 4\frac{1}{4}$  inches; No. 3A,  $3\frac{1}{4} \times 5\frac{1}{2}$ . **SIZE OF KODAK:** No. 3,  $1\frac{3}{4} \times 4\frac{1}{2} \times 7\frac{1}{2}$  inches; No. 3A,  $2 \times 4\frac{3}{4} \times 9\frac{1}{2}$ .  
**CAPACITY:** No. 3, 12; No. 3A, 10 exposures.  
**WEIGHT:** No. 3, 30 ounces; No. 3A, 41 ounces.  
**FOCUS:** Adjustable, with automatic focusing lock; No. 3A has double scale for film or plates.  
**LENSES:** Rapid Rectilinear; No. 3,  $5\frac{1}{4}$ -inch focus; No. 3A,  $6\frac{1}{2}$ -inch focus; Kodak Anastigmat *f.7.7*; No. 3,  $5\frac{1}{4}$ -inch focus; No. 3A,  $6\frac{3}{4}$ -inch.  
**SHUTTER:** No. 3, Kodak Ball Bearing,  $1/25$ ,  $1/50$ ,  $1/100$  second. No. 3A, Kodex,  $1/25$ ,  $1/50$  second; multiple speed with Anastigmat Lens, only. All shutters with time and "bulb" actions, and finger and cable releases.  
**MISCELLANEOUS:** Brilliant, reversible finder. Metal parts finished in nickel and black enamel. Back and bed of aluminum, covered with seal grain leather. Black bellows. Auto-graphic feature. Two tripod sockets. Rising, falling and sliding front.

### *Prices*

	No. 3	No. 3A
With Kodak Ball Bearing Shutter and Rapid Rectilinear Lens . . . . .	\$19.00	
With Kodak Anastigmat <i>f.7.7</i> Lens . . . . .	24.00	
With Kodex Shutter and Rapid Rectilinear Lens . . . . .		\$22.50
With multiple speed shutter and Kodak Anastigmat <i>f.7.7</i> Lens . . . . .		31.50
Black Sole Leather Case, with strap . . . . .	3.50	4.00
Combination Back . . . . .	4.00	4.00
Double Glass Plate Holders, each . . . . .	1.50	1.50
Kodak Cut Film Sheaths, each . . . . .	.10	.15
Kodak Cut Film regular, package of 12 . . . . .	.67	.93
Kodak Cut Film, <i>Super Speed</i> . . . . .	.77	1.03
Autographic Film Cartridge, 12 exposures (No. A 118) for No. 3; 10 exposures (No. A 122) for No. 3A . . . . .	.90	.90
Ditto, 6 exposures . . . . .	.45	.55
Kodak Portrait Attachment (see page 32) . . . . .	.75	.75
Kodak Self Timer (see page 32) . . . . .	1.25	1.25

*The prices of cameras and film include the Excise Tax*



No. 1 Autographic  
**KODAK** *Special*

**K**ODAK Anastigmat lens  $f.6.3$  has the speed you often need; Kodamatic Shutter times with precision seven speeds from  $1/200$  to  $1/2$  second; automatic exposure dial gives the correct diaphragm opening for the speed you decide on—all in a camera hardly as large as your hand.

Smart in design, handsome in finish, see the No. 1 *Special* at your dealer's and you will be quick to agree with us that it's a hand camera masterpiece.

### DESCRIPTIVE DETAILS

SIZE OF PICTURES:  $2\frac{1}{4} \times 3\frac{1}{4}$  inches.

SIZE OF KODAK:  $1\frac{5}{16} \times 3\frac{1}{16} \times 6\frac{7}{16}$  inches.

CAPACITY WITHOUT RELOADING: 6 exposures.

WEIGHT: 18 ounces.

FOCUS: Adjustable only, with screw focusing device.

LENSES: For details see price list below.

SHUTTER: Kodamatic, cable and finger releases.

SPEEDS: Seven, from 1/200 to 1/2 second with time and "bulb" actions.

FINDER: Brilliant; reversible for vertical or horizontal pictures.

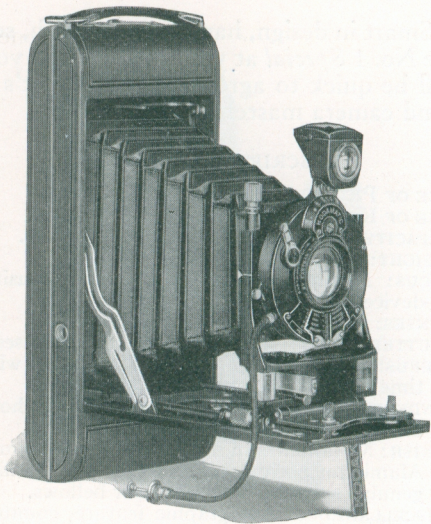
FINISH: Metal parts in nickel and black enamel. Aluminum body covered with finest quality genuine sealskin. Black leather bellows.

MISCELLANEOUS: Autographic feature, counter-sunk. Two tripod sockets. Rising front.

### Prices

No. 1 AUTOGRAPHIC KODAK <i>Special</i> , with Kodak Anastigmat Lens <i>f</i> .6.3, $4\frac{1}{2}$ -inch focus, and Kodamatic Shutter . . . . .	\$50.00
With Bausch & Lomb Kodak Anastigmat Lens <i>f</i> .6.3, No. 1, $4\frac{1}{2}$ -inch focus, and Kodamatic Shutter . . . . .	62.00
With Bausch & Lomb Tessar Series IIb Lens <i>f</i> .6.3, No. 3, $4\frac{1}{2}$ -inch focus, and Kodamatic Shutter . . . . .	78.75
With Bausch & Lomb Tessar Series Ic Lens <i>f</i> .4.5, No. 12, $3\frac{1}{2}$ -inch focus, and Kodamatic Shutter . . . . .	76.50
Long-grain Leather Case, velvet-lined, with strap . . . . .	3.75
Autographic Film Cartridge, 6 exposures (No. A 120) . . . . .	.25
Kodak Portrait Attachment (see page 32) . . . . .	.75
Kodak Self Timer (see page 32) . . . . .	1.25

*The prices of cameras and film include the Excise Tax*



Nos. 1A and 2C Autographic  
**KODAKS** *Special*

**I**F THE picture is possible for a pocket camera, you'll find these two *Specials* equal to the occasion. The speed of the lens, Kodak Anastigmat, *f.6.3*, saves many a difficult situation; Kodamatic shutter range and accuracy—seven speeds from  $1/200$  ( $1/150$  on No. 2C) to  $1/2$  second—support the lens to the limit.

Such photographic proficiency, at times essential, is at all times worth while.

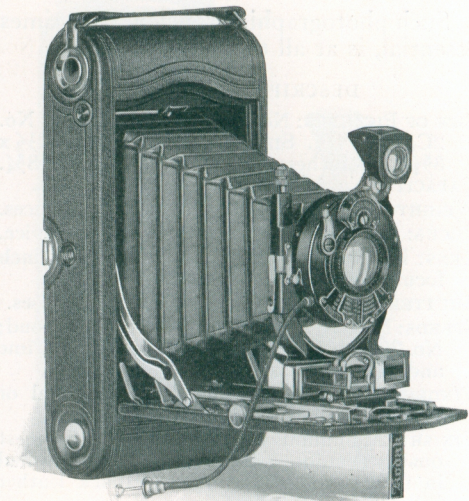
### DESCRIPTIVE DETAILS

- SIZE OF PICTURES: No. 1A,  $2\frac{1}{2} \times 4\frac{1}{4}$  inches; No. 2C,  $2\frac{7}{8} \times 4\frac{7}{8}$ . SIZE OF KODAK: No. 1A,  $1\frac{1}{2} \times 3\frac{5}{16} \times 8$  inches; No. 2C,  $1\frac{9}{16} \times 3\frac{7}{8} \times 8\frac{3}{4}$ . CAPACITY: No. 1A, 12; No. 2C, 10 exposures. WEIGHT: No. 1A, 27 ounces; No. 2C, 32 ounces. FOCUS: Adjustable, with screw focusing device. LENS: Kodak Anastigmat *f*.6.3; No. 1A, 5-inch focus; No. 2C, 6-inch focus. SHUTTER: Kodamatic, cable and finger releases. SPEEDS: No. 1A, seven from 1/200 to 1/2 second; No. 2C, seven from 1/150 to 1/2 second. Time and "bulb" actions on each. FINDER: Brilliant; reversible for horizontal or vertical pictures. FINISH: Aluminum body covered with finest quality genuine sealskin. Metal parts finished in nickel and black enamel. Black leather bellows. MISCELLANEOUS: Autographic feature, counter-sunk. Two tripod sockets. Kodak Range Finder. Rising and falling front.

### Prices

	No. 1A	No. 2C
AUTOGRAPHIC KODAK <i>Special</i> , with Kodak Anastigmat Lens, <i>f</i> .6.3, and Kodamatic Shutter . . . . .	\$60.00	\$65.00
Long-grain Leather Case, velvet-lined, with strap . . . . .	4.50	5.00
Autographic Film Cartridge No. 1A, 12 exposures (No. A 116); No. 2C, 10 exposures (No. A 130) . . . . .	.60	.75
Ditto, 6 exposures . . . . .	.30	.45
Kodak Portrait Attachment (see page 32) . . . . .	.75	.75
Kodak Self Timer (see page 32) . . . . .	1.25	1.25

*The prices of cameras and film include the Excise Tax*



Nos. 3 and 3A Autographic  
**KODAKS** *Special*

“JUST as good hand cameras as can be made”—the Nos. 3 and 3A Kodaks *Special* are nothing less. And their photographic ability can be carried to the hand camera limit by equipping them with the Combination Back (extra). For this permits use of Kodak Cut Film, or plates.

## DESCRIPTIVE DETAILS

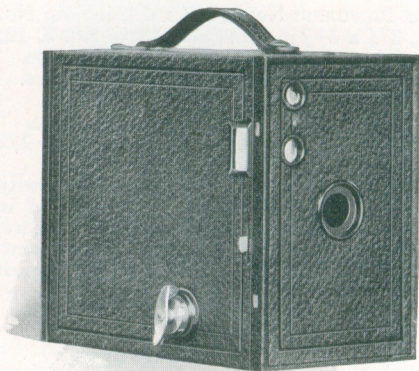
**SIZE OF PICTURES:** No. 3, 3 $\frac{1}{4}$  x 4 $\frac{1}{4}$  inches; No. 3A, 3 $\frac{1}{4}$  x 5 $\frac{1}{2}$  inches. **CAPACITY:** No. 3, 12; No. 3A, 10 exposures. **FOCUS:** Adjustable. **WEIGHT:** No. 3, 32 ounces; No. 3A, 42 ounces. **LENSES:** For details see "Prices" below. **SHUTTERS:** Kodamatic, Ilex Acme or Optimo. **SPEEDS:** Kodamatic, seven; No. 3, 1/200 to 1/2 second; No. 3A, 1/150 to 1/2. **MISCELLANEOUS:** Aluminum body covered with Persian Morocco. Metal parts finished in nickel and black enamel. Autographic feature; brilliant finder; rising, sliding and falling front; two tripod sockets; No. 3 equipped with spirit level; No. 3A with Kodak Range Finder.

### *Prices*

	No. 3	No. 3A
With Kodak Anastigmat <i>f</i> .6.3 Lens, 5-inch focus on No. 3; 6 $\frac{3}{4}$ -inch focus on No. 3A; and Kodamatic Shutter . . . . .	\$55.00	\$70.00
With Ilex Acme or Optimo Shutter . . . . .	45.00	60.00
With Bausch & Lomb Kodak Anastigmat <i>f</i> .6.3 Lens, No. 2, 5 $\frac{1}{4}$ -inch focus on No. 3; No. 4, 6 $\frac{3}{4}$ -inch focus on No. 3A; and Kodamatic Shutter . . . . .	70.00	90.00
With Ilex Acme or Optimo Shutter . . . . .	60.00	80.00
With Bausch & Lomb Tessar Series IIb Anastigmat <i>f</i> .6.3 Lens; No. 4, 5 $\frac{1}{4}$ -inch focus on No. 3; No. 5K, 7 $\frac{1}{4}$ -inch focus on No. 3A; and Kodamatic Shutter . . . . .	80.00	104.00
With Ilex Acme or Optimo Shutter . . . . .	70.00	94.00
Grain Leather Case, velvet-lined . . . . .	4.75	5.25
Combination Back for cut film or plates . . . . .	4.50	5.00
Double Glass Plate Holders, each . . . . .	1.50	1.50
Kodak Cut Film Sheaths, each . . . . .	.10	.15
Kodak Cut Film regular, package of 12 . . . . .	.67	.93
Kodak Cut Film, <i>Super Speed</i> . . . . .	.77	1.03
Autographic Film Cartridge, 12 exposures (No. A 118) for No. 3; 10 exposures (No. A 122) for No. 3A . . . . .	.90	.90
Ditto, 6 exposures . . . . .	.45	.55
Kodak Portrait Attachment (see page 32) . . . . .	.75	.75
Kodak Self Timer (see page 32) . . . . .	1.25	1.25

*The prices of cameras and film include the Excise Tax*





## Nos. 2 and 2A BROWNIES

*New, All-Metal Models*

**M**AKE good pictures the easiest way at the smallest cost is what the Brownies *do*. Eastman-made in Kodak workshops by Kodak workmen is what they *are*.

Nos. 2 and 2A Brownies have all-metal bodies for wear, covered with imitation leather for looks. The loading mechanism is simplified; there are two tripod sockets.

Such improvements assure the Nos. 2

and 2A Brownies even greater popularity than has been theirs heretofore.

### DESCRIPTIVE DETAILS

SIZE OF PICTURES: No. 2,  $2\frac{1}{4} \times 3\frac{1}{4}$  inches; No. 2A,  $2\frac{1}{2} \times 4\frac{1}{4}$  inches.

SIZE OF CAMERA: No. 2,  $3 \times 4 \times 5\frac{7}{16}$  inches; No. 2A,  $3\frac{1}{4} \times 5 \times 6$  inches.

CAPACITY N. C. FILM: No. 2, 6 exposures; No. 2A, 12 exposures.

WEIGHT: No. 2,  $16\frac{1}{2}$  ounces; No. 2A,  $21\frac{1}{2}$  ounces.

FOCUS: Fixed only.

LENSES: No. 2, Single Meniscus; No. 2A, Meniscus Achromatic.

SHUTTER: Eastman Rotary, with three stops and time action.

FINDER: Two ground glass, for vertical or horizontal pictures.

FINISH: Body of aluminum, covered with imitation leather. Metal parts in nickel and black enamel.

MISCELLANEOUS: Two tripod sockets.

### *Prices*

	No. 2	No. 2A
BROWNIE CAMERA, Single Meniscus Lens on No. 2, Meniscus Achromatic Lens on No. 2A, Eastman Rotary Shutter	\$2.75	\$3.75
Brownie Carrying Case, with strap . . .	1.25	1.50
N. C. Film Cartridge, 12 exposures (No. 116) for 2A . . . . .		.60
Ditto, 6 exposures (No. 116) for No. 2A; (No. 120) for No. 2 . . . . .	.25	.30
Kodak Portrait Attachment (see page 32)	.50	.50
Developing and Printing Outfit . . . . .	2.00	2.00

*The prices of cameras and film include the Excise Tax*



Nos. 0, 2C and 3

## BROWNIES

**C**HILDREN like Brownies because they work so easily. You'll like them because they work so well.

### DESCRIPTIVE DETAILS

**SIZE OF PICTURES:** No. 0,  $1\frac{5}{8} \times 2\frac{1}{2}$  inches; No. 2C,  $2\frac{7}{8} \times 4\frac{7}{8}$ ; No. 3,  $3\frac{1}{4} \times 4\frac{1}{4}$ . **SIZE OF CAMERA:** No. 0,  $2\frac{5}{8} \times 3\frac{3}{8} \times 4\frac{1}{8}$ ; No. 2C,  $3\frac{7}{8} \times 6\frac{1}{4} \times 7\frac{1}{4}$ ; No. 3,  $4\frac{3}{8} \times 5\frac{1}{8} \times 6\frac{1}{8}$ . **CAPACITY N. C. FILM:** No. 0, 8; No. 2C, 6; No. 3, 12 exposures.

**WEIGHT:** No. 0, 8; No. 2C, 28; No. 3, 25 ounces.

**FOCUS:** Fixed only. **LENSES:** No. 0, Meniscus; No. 2C and No. 3, Meniscus Achromatic.

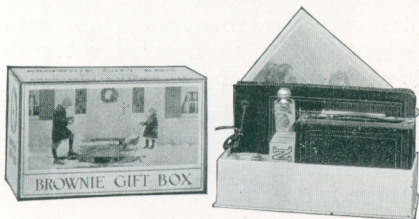
**SHUTTER:** Eastman Rotary; No. 0 with one stop and time action, No. 2C and No. 3 with three stops and time action.

**MISCELLANEOUS:** Ground Glass Finder for horizontal or vertical pictures. **FINISH:** Covered with imitation leather. Nos. 2C and 3 have two tripod sockets.

## Prices

BROWNIE CAMERA, Eastman Rotary	No. 0	No. 2C	No. 3
Shutter and Meniscus Lens . . .	\$2.00		
With Meniscus Achromatic Lens . .		\$5.00	\$4.50
Brownie Carrying Case, with strap .	1.00	1.60	1.60
N. C. Film Cartridge: No. 0, 8 exposures (No. 127); No. 3, 12 exposures (No. 124) . . . . .	.25		.90
Ditto, 6 exposures: No. 2C (No. 130); No. 3 (No. 124). . . . .		.45	.45
Brownie Tripod Adapter . . . . .	.25		
Kodak Portrait Attachment . . . . .	.50	.75	.75
Developing and Printing Outfit . . .	2.00	2.00	2.00

*The prices of cameras and film include the Excise Tax*



## BROWNIE GIFT BOX

**A** COMPLETE picture-making, picture-keeping outfit that's a splendid gift for a child. It's a barrel of photographic fun in a box.

**CONTENTS:** No. 2 Brownie camera; picture size,  $2\frac{1}{4} \times 3\frac{1}{4}$  inches; Instruction Manual; 2 rolls Kodak Film; Kodak Portrait Attachment for sharp focus "close-ups"; 50-leaf Eastman album; Kodak Photo Paste; booklet "At Home with the Kodak"; one year's subscription to *Kodakery*—12 copies.

**PRICE (including Excise Tax) . . . . . \$5.00.**

# Nos. 2 and 2A

## Folding Autographic BROWNIES

**K**ODEX, a new Eastman shutter, gives new popularity to these long-time favorites. It clips snapshots of 1/25 and 1/50 second exposure with dependable accuracy, and has time and "bulb" actions as well. There's even greater certainty that you'll get good pictures.

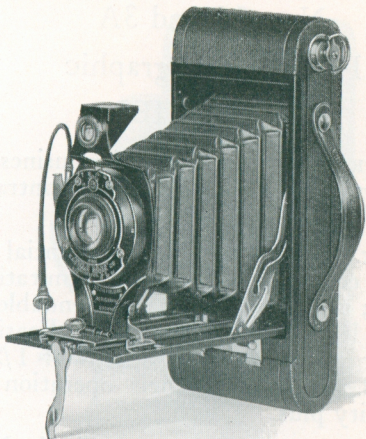
The presence of tested lenses and focusing scales backs this up, while the autographic feature provides an exclusively Eastman touch.

And the dominant Brownie characteristic, simplicity, is far from forgotten.

### *Prices*

	No. 2	No. 2A
FOLDING AUTOGRAPHIC BROWNIE with Kodex Shutter and Meniscus Achromatic Lens . . . . .	\$9.00	\$10.00
With Rapid Rectilinear Lens . . . . .	11.00	12.00
Carrying Case for Folding Autographic Brownie, with strap . . . . .	1.50	1.60
Autographic Film Cartridge, 12 exposures (No. A 116) for No. 2A . . . . .		.60
Ditto, 6 exposures (No. A 120) for No. 2 . . . . .	.25	
Ditto, 6 exposures (No. A 116) for No. 2A . . . . .		.30
Kodak Portrait Attachment (see page 32) . . . . .	.75	.75
Kodak Self Timer (see page 32) . . . . .	1.25	1.25

*The prices of cameras and film include the Excise Tax*



### DESCRIPTIVE DETAILS

**SIZE OF PICTURES:** No. 2,  $2\frac{1}{4} \times 3\frac{1}{4}$  inches; No. 2A,  $2\frac{1}{2} \times 4\frac{1}{4}$ . **SIZE OF CAMERA:** No. 2,  $1\frac{1}{4} \times 3\frac{1}{8} \times 6\frac{1}{2}$  inches; No. 2A,  $1\frac{7}{16} \times 3\frac{3}{8} \times 7\frac{7}{8}$ .

**CAPACITY:** No. 2, 6; No. 2A, 12 exposures.

**WEIGHT:** No. 2, 19 ounces; No. 2A,  $25\frac{1}{2}$  ounces.

**FOCUS:** Adjustable, with automatic focusing lock.

**LENSES:** Meniscus Achromatic; or Rapid Rectilinear, No. 2,  $3\frac{3}{4}$ -inch focus; No. 2A, 5-inch focus.

**SHUTTER:** Kodex, with cable and finger release.

**SPEEDS:**  $1/25$  and  $1/50$ , time and "bulb" actions.

**FINDER:** Ground glass, reversible.

**FINISH:** Metal body covered with imitation leather. Black bellows. Autographic feature. Two tripod sockets.

# Nos. 2C and 3A

## Folding Autographic

### BROWNIES

CAMERAS of the “built-for-business” sort—nothing freakish, no contraptions. “Sensible” describes them.

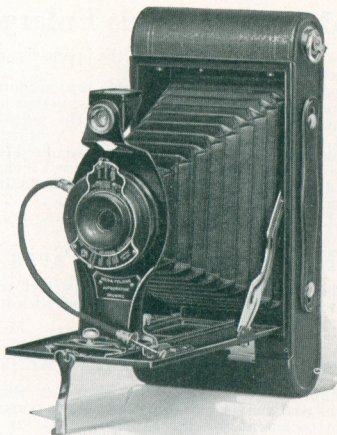
Their construction is substantial—metal, covered with durable imitation leather; their equipment is dependable—tested lens and Kodak Ball Bearing Shutter with automatic speeds of 1/25, 1/50, 1/100 second; their operation is simplicity plus.

The pictures are generously sized—No. 2C, 2<sup>7</sup>/<sub>8</sub> x 4<sup>7</sup>/<sub>8</sub> inches; No. 3A, 3<sup>1</sup>/<sub>4</sub> x 5<sup>1</sup>/<sub>2</sub>.

### *Prices*

FOLDING AUTOGRAPHIC BROWNIE with	No. 2C	No. 3A
Meniscus Achromatic Lens and Kodak Ball Bearing Shutter . . . . .	\$13.00	\$14.50
With Rapid Rectilinear Lens . . . . .	15.00	17.00
Carrying Case, with strap . . . . .	1.70	1.80
Autographic Film Cartridge, 10 exposures, 2 <sup>7</sup> / <sub>8</sub> x 4 <sup>7</sup> / <sub>8</sub> (No. A 130) for No. 2C; 10 exposures, 3 <sup>1</sup> / <sub>4</sub> x 5 <sup>1</sup> / <sub>2</sub> (No. A 122) for No. 3A . . . . .	.75	.90
Ditto, 6 exposures . . . . .	.45	.55
Kodak Portrait Attachment (see page 32)	.75	.75
Kodak Self Timer (see page 32) . . . . .	1.25	1.25

*The prices of cameras and film include the Excise Tax*



### DESCRIPTIVE DETAILS

SIZE OF PICTURES: No. 2C,  $2\frac{7}{8} \times 4\frac{7}{8}$  inches; No. 3A,  $3\frac{1}{4} \times 5\frac{1}{2}$ . SIZE OF CAMERA: No. 2C,  $1\frac{3}{4} \times 3\frac{3}{4} \times 8\frac{11}{16}$  inches; No. 3A,  $1\frac{11}{16} \times 4\frac{5}{16} \times 9\frac{5}{16}$ . CAPACITY: 10 exposures.

WEIGHT: No. 2C, 27 ounces; No. 3A, 32 ounces.

FOCUS: Adjustable, with automatic focusing lock.

LENSES: Meniscus Achromatic; or Rapid Rectilinear, No. 2C,  $5\frac{1}{2}$ -inch focus; No. 3A,  $6\frac{1}{4}$ .

SHUTTER: Kodak Ball Bearing with cable and finger releases. SPEEDS:  $1/25$ ,  $1/50$  and  $1/100$  second, and time and "bulb" actions.

FINDER: Ground glass; reversible. FINISH: Metal parts in nickel and black enamel. Metal body covered with imitation leather. Black bellows. Two tripod sockets. Autographic feature.



# Kodak Auto-Focus Enlarger

Slide the camera up or down and the image size changes, but the focus stays sharp.

The apparatus attaches to any table top; accommodates film or plate negatives up to 4 x 6 inches; makes prints on Bromide paper from 1½ to 3½ times the negative size. Maximum enlargement, 14 x 21 inches. A Mazda Lamp (not supplied) of from 75 to 200 watts is required for printing. Price complete with Kodak Anastigmat lens, electric cord and plug, and set of six flexible metal masks (including Excise Tax) . . . . . \$35.00  
 Diffusing Disc for soft focus effects . . . . . 1.00

## KODAK SELF-TONING PAPER

A new daylight printing paper, simplicity itself to handle. No dark-room, no developing. Gives purplish-brown or sepia effects. Prices same as for Velox.

## KODAK PORTRAIT ATTACHMENTS

Two supplementary lenses that slip over the regular camera lens and render close up portraits in correct focus. Portrait Attachment for *sharp* focus; *Diffusion* Portrait Attachment for *soft* focus.

Kodak Portrait Attachment . . . . . \$ .50 and .75  
 Kodak Diffusion Portrait Attachment . . \$1.25 and 1.50  
 (According to size)

## KODAK SELF TIMER

Attaches to any cable release and presses the button for you at any interval from ½ second to 1 minute.

Price . . . . . \$1.25

## KODAK CUT FILM

Offers all the advantages of plates with none of their drawbacks, and adds Cut Film convenience. Two speeds, regular and *Super Speed*—extra fast. Available for plate-holding cameras including both regular and *Special* models of the Nos. 3 and 3A Kodaks when equipped with Combination Backs and Kodak Cut Film Sheaths.

	Price per doz., including Excise Tax			
	2¼ x 3¼	3¼ x 4¼	3¼ x 5½	4 x 5
Regular . . . . .	\$ .46	\$ .67	\$ .93	\$ .93
<i>Super Speed</i> . . . . .	.52	.77	1.03	1.03

## GIVE A KODAK

WHETHER the occasion is Christmas, birthday, anniversary, or of no special significance at all, give a Kodak. It's sure to be just what was wanted.

At our Kodak counter there's always a complete assortment of Kodaks and Brownies, ready for your selection. And we're always ready to help you choose.

SHAUL & POTTS

PULASKI, N. Y.