



KODAK

# The Kodak Way

The story that winter weaves, Kodak keeps.

Holiday high-spots, the season's sports, the intimate story of the home—whenever the incident interests you, press the button and in a day or two you're pasting the print in your album.

Picture-making the Kodak way is emphatically easy and the value of each negative is greatly increased through the Autographic feature on all Kodaks and Folding Brownies. By means of this attachment, you may write the place, the date, a child's age or similar important data on the film at the time of exposure. And this advantage is *exclusively* Eastman.

There is no extra charge for autographic film.

Any of the cameras described in this little book are waiting for you "at your dealer's."

EASTMAN KODAK COMPANY

ROCHESTER, N. Y.

December 1923

Fixed Focus Models  
Vest Pocket Autographic  
KODAK

Compact enough to wear, yet good enough to make pictures you'll proudly point out in your Kodak album, the Vest Pocket is a photographic gem.

Out of your pocket and into position in a moment it represents the greatest operating and carrying convenience. Keep it with you and you'll catch the unexpected picture that goes as quickly as it comes.

Two fixed focus models: **Regular** with two types of lenses; *Special* with the sharp-cutting Kodak Anastigmat *f.7.7*.

#### DESCRIPTIVE DETAILS

SIZE OF PICTURES:  $1\frac{5}{8}$  x  $2\frac{1}{2}$  inches.

SIZE OF KODAK:  $1$  x  $2\frac{3}{8}$  x  $4\frac{3}{4}$  inches.

CAPACITY WITHOUT RELOADING: 8 exposures.

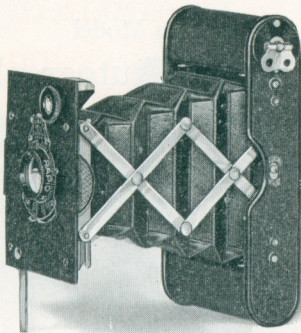
WEIGHT: 11 ounces.

FOCUS: Fixed.

LENSES: **Regular**—Meniscus Achromatic or Rapid Rectilinear,  $3\frac{1}{2}$ -inch focus. *Special*—Kodak Anastigmat, *f.7.7*,  $3\frac{1}{2}$ -inch focus.

SHUTTER: Kodak Ball Bearing No. 0, with finger release only (cable release attachment sold separately).

SPEEDS:  $1/25$ ,  $1/50$  second, and time and "bulb" actions.



**FINDER:** Brilliant; reversible for vertical or horizontal pictures.

**FINISH:** Metal parts in nickel and black enamel. All metal body. Regular—Japan crystal finish. *Special*—Covered with Morocco grain leather. Black bellows.

**MISCELLANEOUS:** Autographic feature.

*Prices*

VEST POCKET AUTOGRAPHIC KODAK (regular model), Meniscus Achromatic lens and Kodak Ball Bearing Shutter . . . . .	\$ 6.50
With Rapid Rectilinear lens, speed U. S. 8 . . . . .	8.00
VEST POCKET AUTOGRAPHIC KODAK <i>Special</i> (fixed focus model), Kodak Anastigmat lens <i>f</i> .7.7, and Kodak Ball Bearing shutter . . . . .	12.00
Leather Case for V. P. Kodak . . . . .	.90
Soft Leather Carrying Bag. . . . .	1.25
Leather Case with Carrying Strap . . . . .	1.00
Belt Carrying Case (russet leather) . . . . .	1.25
Autographic Film Cartridge, 8 exposures (No. A 127) .	.25
Vest Pocket Cable Release Attachment . . . . .	.50
Vest Pocket Kodak Tripod Adapter . . . . .	.50
Kodak Portrait Attachment (see page 32) . . . . .	.75
Kodak Self Timer (see page 32) . . . . .	1.25

*The prices of camera and film include the Excise Tax*

## Focusing Model

# Vest Pocket Autographic KODAK *Special*

In the V. P. K. *Special*, Kodak Anastigmat lens  $f.6.9$  brings optical excellence to a camera small enough to palm.

Sharp focus is at your finger tips. By a single turn of the lens mount, which replaces the familiar distance scale, sharp focus is secured from close-up portraits at three feet to distant views. The resulting negatives—sharp-cut, sparkling—assure excellent prints and splendid enlargements. Picture size,  $1\frac{5}{8} \times 2\frac{1}{2}$  inches.

### DESCRIPTIVE DETAILS

SIZE OF PICTURES:  $1\frac{5}{8} \times 2\frac{1}{2}$  inches.

SIZE OF KODAK:  $1 \times 2\frac{3}{8} \times 4\frac{3}{4}$  inches.

CAPACITY WITHOUT RELOADING: 8 exposures.

WEIGHT: 11 ounces.

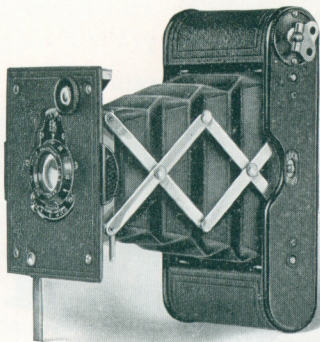
FOCUS: Adjustable.

LENS: Kodak Anastigmat,  $f.6.9$ ,  $3\frac{1}{2}$ -inch focus.

SHUTTER: Kodak Ball Bearing No. 0, with finger release only (cable release attachment sold separately).

SPEEDS:  $1/25$ ,  $1/50$  second, and time and "bulb" actions.

FINDER: Brilliant; reversible for vertical or horizontal pictures.



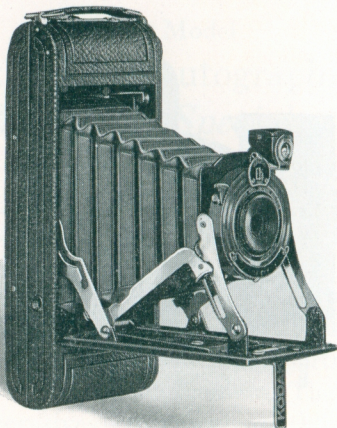
FINISH: Metal parts in nickel and black enamel.  
 All metal body covered with Morocco grain leather. Black bellows.

MISCELLANEOUS: Autographic feature.

*Prices*

VEST POCKET AUTOGRAPHIC KODAK <i>Special</i> (focusing model), Kodak Anastigmat lens <i>f.6.9</i> , and Kodak Ball Bearing Shutter . . . . .	\$18.00
Leather Case for V. P. Kodak . . . . .	.90
Soft Leather Carrying Bag. . . . .	1.25
Leather Case with Carrying Strap . . . . .	1.00
Belt Carrying Case (russet leather) . . . . .	1.25
Autographic Film Cartridge, 8 exposures (No. A 127) . . . . .	.25
Vest Pocket Cable Release Attachment . . . . .	.50
Vest Pocket Kodak Tripod Adapter . . . . .	.50
Kodak Self Timer (see page 32) . . . . .	1.25

*The prices of camera and film include the Excise Tax*



Fixed Focus Models  
Nos. 1 and 1A Pocket  
**KODAKS, Series II**

“They work with extraordinary ease and speed,” and you’ll second this popular verdict when you see the Pocket Kodaks, Series II, at your dealer’s.

Open the camera, pull down the bed and, by means of the self-erecting front, the fixed focus lens snaps into position and you’re ready for the picture.

All this convenience in a camera em-

phatically compact, thoroughly capable. No. 1 model makes  $2\frac{1}{4} \times 3\frac{1}{4}$  inch pictures; No. 1A,  $2\frac{1}{2} \times 4\frac{1}{4}$ .

## DESCRIPTIVE DETAILS

SIZE OF PICTURES: No. 1,  $2\frac{1}{4} \times 3\frac{1}{4}$  inches; No. 1A,  $2\frac{1}{2} \times 4\frac{1}{4}$  inches.

SIZE OF KODAK: No. 1,  $1\frac{5}{16} \times 3\frac{1}{16} \times 6\frac{7}{16}$  inches; No. 1A,  $1\frac{9}{16} \times 3\frac{5}{16} \times 8$  inches.

CAPACITY WITHOUT RELOADING: No. 1, 6 exposures; No. 1A, 12 exposures.

WEIGHT: No. 1, 15 ounces; No. 1A, 23 ounces.

FOCUS: Fixed.

LENS: Single Achromatic.

SHUTTER: Kodak Ball Bearing with finger release.

SPEEDS:  $1/25$ ,  $1/50$  and  $1/100$  second as well as time and "bulb" actions.

FINDER: Brilliant; reversible for horizontal or vertical pictures.

BODY: Aluminum.

COVERING: No. 1, Levant grain leather; No. 1A, fine seal-grain leather.

FINISH: Metal parts in nickel and black enamel. Black bellows.

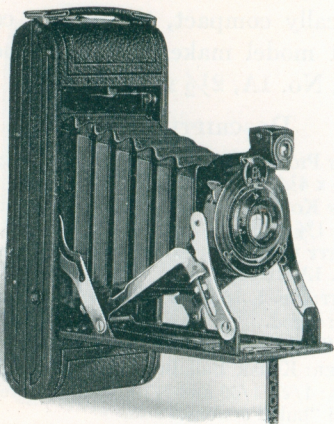
MISCELLANEOUS: Autographic feature. Two tripod sockets.

### Prices

	No. 1	No. 1A
POCKET KODAK, SERIES II (fixed focus) with Meniscus Achromatic lens and Kodak Ball Bearing shutter . . . . .	\$13.50	\$15.00
Black Sole Leather Case, with strap . . . . .	2.50	3.00
Autographic Film Cartridge, 12 exposures (No. A 116) for No. 1A . . . . .		.60
Ditto, 6 exposures (No. A 120) for No. 1; (No. A 116) for No. 1A . . . . .	.25	.30
Kodak Portrait Attachment (see page 32) . . . . .	.75	.75
Kodak Self Timer (see page 32) . . . . .	1.25	1.25
Cable Release . . . . .	.35	.35

*The prices of cameras and film include the Excise Tax*





Focusing Models  
**Nos. 1 and 1A Pocket  
KODAKS, Series II**

These cameras have three features you'll particularly like.

First, the Kodak Anastigmat lens  $f.7.7$ , Eastman-made for better pictures. Second, the device that gives you accurate focus from 5 feet to 100 on the No. 1 and 6 feet to 100 on the No. 1A by simply turning the lens mount. Third, the self-erecting front that brings the lens into position for

focusing simultaneously as you open the camera.

No. 1 makes pictures  $2\frac{1}{4} \times 3\frac{1}{4}$ ; No. 1A,  $2\frac{1}{2} \times 4\frac{1}{4}$ .

### DESCRIPTIVE DETAILS

SIZE OF PICTURES: No. 1,  $2\frac{1}{4} \times 3\frac{1}{4}$  inches; No. 1A,  $2\frac{1}{2} \times 4\frac{1}{4}$  inches.

SIZE OF KODAK: No. 1,  $1\frac{5}{16} \times 3\frac{1}{16} \times 6\frac{7}{16}$  inches; No. 1A,  $1\frac{9}{16} \times 3\frac{5}{16} \times 8$  inches.

CAPACITY WITHOUT RELOADING: No. 1, 6 exposures; No. 1A, 12 exposures.

WEIGHT: No. 1,  $16\frac{1}{2}$  ounces; No. 1A, 26 ounces.

FOCUS: Adjustable only.

LENS: Kodak Anastigmat, *f*.7.7—No. 1,  $4\frac{1}{4}$ -inch focus; No. 1A,  $5\frac{1}{4}$ -inch focus.

SHUTTER: Kodak Ball Bearing with finger release.

SPEEDS:  $1/25$ ,  $1/50$  and  $1/100$  second, as well as time and "bulb" actions.

FINDER: Brilliant; reversible for horizontal or vertical pictures.

BODY: Aluminum.

COVERING: No. 1, Levant grain leather; No. 1A, fine seal-grain leather.

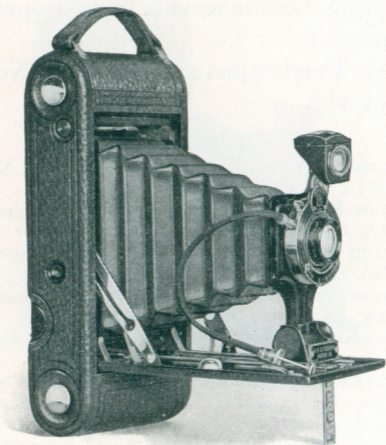
FINISH: Metal parts in nickel and black enamel. Black bellows.

MISCELLANEOUS: Autographic feature. Two tripod sockets.

### Prices

	No. 1	No. 1A
POCKET KODAK, SERIES II (focusing model), with Kodak Anastigmat lens <i>f</i> .7.7, and Kodak Ball Bearing shutter . . . . .	\$20.00	\$22.00
Black Sole Leather Case, with strap . . . . .	2.50	3.00
Autographic Film Cartridge, 12 exposures (No. A 116) for No. 1A . . . . .		.60
Ditto, 6 exposures (No. A 120) for No. 1; (No. A 116) for No. 1A . . . . .	.25	.30
Kodak Portrait Attachment (see page 32) . . . . .	.75	.75
Kodak Self Timer (see page 32) . . . . .	1.25	1.25
Cable Release . . . . .	.35	.35

*The prices of cameras and film include the Excise Tax*



## Nos. 1 and 1A Autographic KODAK Juniors

Nos. 1 and 1A Junior are common sense cameras and are justly among the most popular models of the Kodak line. You'll mark at first glance how easily they work, how compactly they fold, how conveniently they carry. Both are autographic, of course, an advantage exclusively Eastman.

## DESCRIPTIVE DETAILS

**SIZE OF PICTURES:** No. 1,  $2\frac{1}{4} \times 3\frac{1}{4}$  inches; No. 1A,  $2\frac{1}{2} \times 4\frac{1}{4}$  inches.

**SIZE OF KODAK:** No. 1,  $1\frac{7}{16} \times 3\frac{5}{8} \times 6\frac{5}{8}$  inches. No. 1A,  $1\frac{5}{8} \times 3\frac{3}{4} \times 8$  inches.

**CAPACITY:** No. 1, 6; No. 1A, 12 exposures.

**WEIGHT:** No. 1,  $21\frac{1}{2}$  ounces; No. 1A,  $27\frac{1}{2}$  ounces.

**FOCUS:** Fixed (with Meniscus Achromatic lens only); or Adjustable (with any listed lens).

**LENSES:** Meniscus Achromatic; Rapid Rectilinear, No. 1,  $4\frac{1}{4}$ -inch focus, No. 1A,  $5\frac{1}{4}$ -inch focus; or Kodak Anastigmat, *f.7.7*, No. 1,  $4\frac{1}{3}$ -inch focus; No. 1A,  $5\frac{1}{4}$ -inch focus.

**SHUTTER:** Kodak Ball Bearing. Ilex Universal with Anastigmat equipment on No. 1A only.

**SPEEDS:** No. 1,  $1/25$ ,  $1/50$  second; with Kodak Anastigmat lens *f.7.7*,  $1/25$ ,  $1/50$  and  $1/100$  second; No. 1A,  $1/25$ ,  $1/50$  and  $1/100$  second. Ilex Universal, seven,  $1/100$  to 1 second. Both with time and "bulb" actions.

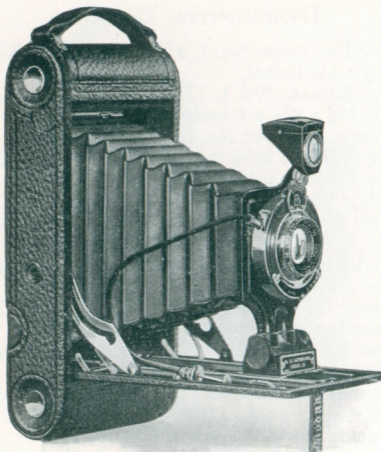
**FINDER:** Brilliant; reversible for vertical or horizontal pictures.

**FINISH:** Metal parts in nickel and black enamel. Body covered with fine seal-grain leather. Black bellows. Autographic feature. Two tripod sockets.

### *Prices*

AUTOGRAPHIC KODAK JUNIOR (fixed focus)	No. 1	No. 1A
Meniscus Achromatic lens and Kodak	Jr.	Jr.
Ball Bearing shutter . . . . .	\$12.00	\$13.00
Focusing model, with scale. . . . .	12.00	13.00
With Rapid Rectilinear lens . . . . .	14.00	15.00
With Kodak Anastigmat lens <i>f.7.7</i> . . . . .	19.00	20.00
With Kodak Anastigmat lens <i>f.7.7</i> and Ilex		
Universal Shutter . . . . .		24.00
Black Sole Leather Case, with strap . . . . .	3.00	3.00
Soft Leather Bag, with strap . . . . .	1.75	2.00
Autographic Film Cartridge, 12 exposures		
(No. A 116) for No. 1A . . . . .		.60
Ditto, 6 exposures (No. A 120) for No. 1; (No.		
A 116) for No. 1A . . . . .	.25	.30
Kodak Portrait Attachment (see page 32) . . . . .	.75	.75
Kodak Self Timer (see page 32) . . . . .	1.25	1.25

*The prices of cameras and film include the Excise Tax*



## Nos. 2C and 3A Autographic KODAK Juniors

Both have generous picture size; both have true Junior characteristics. They're easy to work, compact to carry, ready for results.

Three lens equipments are available including Kodak Anastigmat  $f.7.7$  with the seven speed Ilex Universal Shutter, a combination that brings especial efficiency at but a moderate advance in price.

## DESCRIPTIVE DETAILS

**SIZE OF PICTURES:** No. 2C,  $2\frac{7}{8} \times 4\frac{7}{8}$  inches; No. 3A,  $3\frac{1}{4} \times 5\frac{1}{2}$  inches.

**SIZE OF KODAK:** No. 2C,  $1\frac{3}{4} \times 4\frac{3}{8} \times 8\frac{3}{4}$  inches; No. 3A,  $1\frac{15}{16} \times 5\frac{1}{8} \times 9\frac{3}{4}$  inches.

**CAPACITY WITHOUT RELOADING:** Both, 10 exposures.

**WEIGHT:** No. 2C, 34 ounces; No. 3A, 37 ounces.

**FOCUS:** Adjustable only with automatic focusing lock.

**LENSES:** Meniscus Achromatic; Rapid Rectilinear, No. 2C,  $5\frac{1}{2}$ -inch focus, No. 3A,  $6\frac{3}{4}$ -inch focus; or Kodak Anastigmat, *f.7.7*, No. 2C,  $5\frac{1}{2}$ -inch focus, No. 3A,  $6\frac{3}{4}$ -inch focus.

**SHUTTER:** Kodak Ball Bearing. Ilex Universal with Anastigmat equipment only.

**SPEEDS:** Kodak Ball Bearing,  $1/25$ ,  $1/50$  and  $1/100$  second. Ilex Universal,  $1$ ,  $1/2$ ,  $1/5$ ,  $1/10$ ,  $1/25$ ,  $1/50$  and  $1/100$  second. Both with time and "bulb" actions.

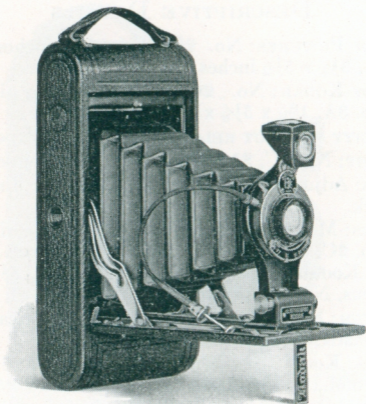
**FINDER:** Brilliant; reversible for vertical or horizontal pictures.

**FINISH:** Back and bed of aluminum, covered with fine seal-grain leather. Metal parts finished in nickel and black enamel. Black bellows. Auto-graphic feature. Two tripod sockets.

### *Prices*

AUTOGRAPHIC KODAK JUNIOR, with Meniscus Achromatic lens and Kodak Ball Bearing shutter	No. 2C	No. 3A
With Rapid Rectilinear lens	\$16.00	\$17.50
With Kodak Anastigmat lens <i>f.7.7</i>	18.00	20.00
With Kodak Anastigmat lens <i>f.7.7</i> , and Ilex Universal shutter	23.00	25.00
Black Sole Leather Case, with strap	27.00	29.00
Soft Leather Carrying Bag, with strap	3.25	3.75
Autographic Film Cartridge, 10 exp. (No. A 130) for No. 2C; (No. A 122) for No. 3A	2.25	2.50
Ditto, 6 exposures	.75	.90
Kodak Portrait Attachment (see page 32)	.45	.55
Kodak Self Timer (see page 32)	.75	.75
	1.25	1.25

*The prices of cameras and film include the Excise Tax*



## No. 1A Autographic KODAK

You'll like the 1A Kodak—its picture proportions, its pocket compactness, the way it looks, the way it works.

When you notice the care that has been given its design and manufacture you'll feel you can depend on it. And the pictures will justify your judgment.

Among the lens equipments available is Kodak Anastigmat  $f.7.7$ , the famous Eastman-made lens for negatives of the superior sort.

## DESCRIPTIVE DETAILS

SIZE OF PICTURES:  $2\frac{1}{2}$  x  $4\frac{1}{4}$  inches.

SIZE OF KODAK:  $1\frac{5}{8}$  x  $3\frac{3}{4}$  x 8 inches.

CAPACITY WITHOUT RELOADING: 12 exposures.

WEIGHT: 27 ounces.

FOCUS: Adjustable only, with automatic focusing lock.

LENSES: Rapid Rectilinear,  $5\frac{1}{4}$ -inch focus; or Kodak Anastigmat, *f.7.7*,  $5\frac{1}{4}$ -inch focus.

SHUTTER: Kodak Ball Bearing, with cable and finger release.

SPEEDS:  $1/25$ ,  $1/50$  and  $1/100$  second, and time and "bulb" actions.

FINDER: Brilliant; reversible for vertical or horizontal pictures.

FINISH: Metal parts in nickel and black enamel. Back and bed of aluminum, covered with Levant grain leather. Black bellows.

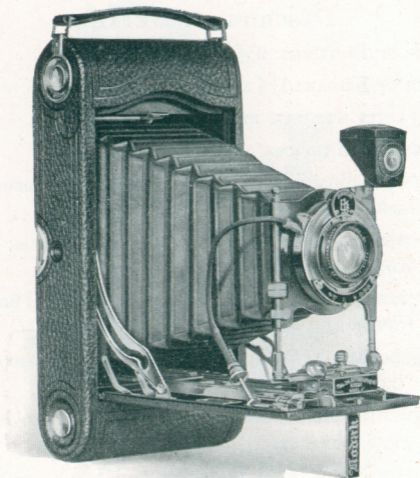
MISCELLANEOUS: Autographic feature. Two tripod sockets.

### *Prices*

No. 1A AUTOGRAPHIC KODAK, with Rapid Rectilinear lens and Kodak Ball Bearing shutter . . . . .	\$19.00
With Kodak Anastigmat lens <i>f.7.7</i> . . . . .	24.00
Black Sole Leather Case, with strap . . . . .	3.00
Soft Leather Carrying Bag, with strap . . . . .	2.00
Autographic Film Cartridge, 12 exposures (No. A 116) . . . . .	.60
Ditto, 6 exposures . . . . .	.30
Kodak Portrait Attachment (see page 32) . . . . .	.75
Kodak Self Timer (see page 32) . . . . .	1.25

*The prices of cameras and film include the Excise Tax*





## Nos. 3 and 3A Autographic KODAKS

The rising, sliding and falling front indicates how complete these Kodaks are, and, consequently, how capable.

For still added photographic fitness, however, the Combination Back is available as extra equipment for both models. This permits use of Kodak Cut Film, or plates, with ground glass focusing.

## DESCRIPTIVE DETAILS

**SIZE OF PICTURES:** No. 3,  $3\frac{1}{4} \times 4\frac{1}{4}$  inches; No. 3A,  $3\frac{1}{4} \times 5\frac{1}{2}$  inches.

**SIZE OF KODAK:** No. 3,  $1\frac{3}{4} \times 4\frac{1}{2} \times 7\frac{1}{2}$  inches; No. 3A,  $2 \times 4\frac{3}{4} \times 9\frac{1}{2}$  inches.

**CAPACITY:** No. 3, 12; No. 3A, 10 exposures.

**WEIGHT:** No. 3, 30 ounces; No. 3A, 41 ounces.

**FOCUS:** Adjustable with automatic focusing lock; No. 3A has double scale for film or plates.

**LENSES:** For details see price list below.

**SHUTTER:** Kodak Ball Bearing,  $1/25$ ,  $1/50$  and  $1/100$  second; Ilex Universal on 3A with Anastigmat equipment only, seven speeds,  $1/100$  to 1 second. Time and "bulb" actions. Cable and finger release on both.

**FINDER:** Brilliant; reversible.

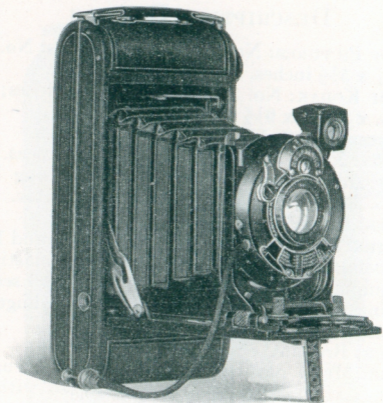
**FINISH:** Metal parts in nickel and black enamel. Back and bed of aluminum, covered with seal grain leather. Black bellows.

**MISCELLANEOUS:** Autographic feature. Two tripod sockets. Rising, falling, and sliding front.

### Prices

	No. 3	No. 3A
AUTOGRAPHIC KODAK, Rapid Rectilinear lens, $5\frac{1}{4}$ -in. focus on No. 3; $6\frac{1}{2}$ -in. focus on No. 3A; Kodak Ball Bearing shutter	\$19.00	\$22.50
With Kodak Anastigmat lens, <i>f</i> .7.7, $5\frac{1}{4}$ -inch focus on No. 3; $6\frac{3}{4}$ -inch focus on No. 3A	24.00	27.50
With Kodak Anastigmat lens <i>f</i> .7.7 and Ilex Universal shutter		31.50
Black Sole Leather Case, with strap	3.50	4.00
Soft Leather Carrying Bag	2.25	2.50
Combination Back	4.00	4.00
Double Glass Plate Holders, each	1.50	1.50
Kodak Cut Film Sheaths, each	.10	.15
Kodak Cut Film, package of 12	.67	.93
Autographic Film Cartridge, 12 exposures (No. A 118) for No. 3; 10 exposures (No. A 122) for No. 3A	.90	.90
Ditto, 6 exposures	.45	.55
Kodak Portrait Attachment (see page 32)	.75	.75
Kodak Self Timer (see page 32)	1.25	1.25

*The prices of cameras and film include the Excise Tax*



## No. 1 Autographic KODAK *Special*

Combined in this Kodak are the fast Kodak Anastigmat lens  $f.6.3$  and the seven speed Kodamatic shutter—features usually found in large cameras, only. Yet the No. 1 *Special* is scarcely a pocketful.

Added photographic prestige is seen in refinements such as the rising front, automatic exposure dial and counter-sunk autographic attachment. A camera you can count on if the picture is possible, even under most unfavorable conditions.

## DESCRIPTIVE DETAILS

SIZE OF PICTURES:  $2\frac{1}{4}$  x  $3\frac{1}{4}$  inches.

SIZE OF KODAK:  $1\frac{5}{16}$  x  $3\frac{1}{16}$  x  $6\frac{7}{16}$  inches.

CAPACITY WITHOUT RELOADING: 6 exposures.

WEIGHT: 18 ounces.

FOCUS: Adjustable only, with screw focusing device.

LENSES: For details see price list below.

SHUTTER: Kodamatic, with cable release.

SPEEDS: Seven, from  $1/200$  to  $1/2$  second with time and "bulb" actions.

FINDER: Brilliant; reversible for vertical or horizontal pictures.

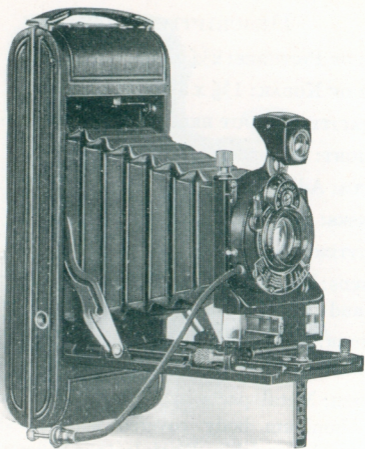
FINISH: Metal parts in nickel and black enamel. Aluminum body covered with finest quality genuine sealskin. Black leather bellows.

MISCELLANEOUS: Autographic feature, counter-sunk. Two tripod sockets.

### Prices

No. 1 AUTOGRAPHIC KODAK <i>Special</i> , with Kodak Anastigmat lens <i>f.6.3</i> , $4\frac{1}{2}$ -inch focus, and Kodamatic shutter . . . . .	\$50.00
With Bausch & Lomb Kodak Anastigmat lens <i>f.6.3</i> , No. 1, $4\frac{1}{2}$ -inch focus, and Kodamatic shutter . . . . .	62.00
With Bausch & Lomb Tessar Series IIb lens <i>f.6.3</i> , No. 3, $4\frac{1}{2}$ -inch focus, and Kodamatic shutter . . . . .	74.00
With Bausch & Lomb Tessar Series Ic lens <i>f.4.5</i> , No. 12, $3\frac{1}{2}$ -inch focus, and Kodamatic shutter . . . . .	71.00
Long-grain Leather, Velvet-lined Case, with strap . . . . .	3.75
Autographic Film Cartridge, 6 exposures (No. A 120) . . . . .	.25
Kodak Portrait Attachment (see page 32) . . . . .	.75
Kodak Self Timer (see page 32) . . . . .	1.25

*The prices of cameras and film include the Excise Tax*



## No. 1A Autographic KODAK *Special*

There's pleasure in owning—or giving—a camera as good as the new No. 1A *Special* for  $2\frac{1}{2} \times 4\frac{1}{4}$  inch pictures, and pride in showing the prints it makes.

The speed of the lens, Kodak Anastigmat  $f.6.3$  and the range of the Kodamatic Shutter (seven speeds from  $1/200$  to  $\frac{1}{2}$  second, time and “bulb”) fit this *Special*

to meet the photographically difficult situation, or to make easily—and better—the less exacting picture.

## DESCRIPTIVE DETAILS

SIZE OF PICTURES:  $2\frac{1}{2}$  x  $4\frac{1}{4}$  inches.

SIZE OF KODAK:  $1\frac{1}{2}$  x  $3\frac{5}{16}$  x 8 inches.

CAPACITY WITHOUT RELOADING: 12 exposures.

WEIGHT: 27 ounces.

FOCUS: Adjustable only with screw focusing device.

LENS AND SHUTTER: Kodak Anastigmat, *f.6.3*.  
Kodamatic shutter with cable release.

SPEEDS: Seven, from  $1/200$  to  $1/2$  second, with time and "bulb" actions.

FINDER: Brilliant; reversible for horizontal or vertical pictures.

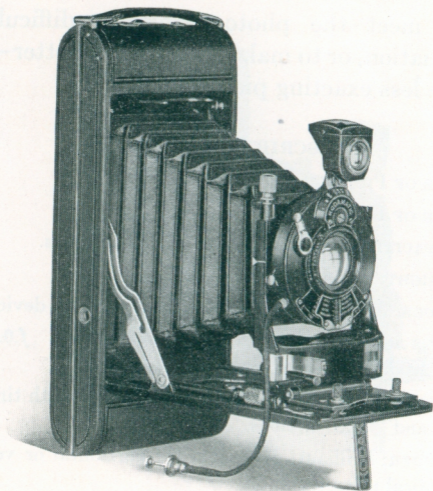
FINISH: Aluminum body covered with finest quality genuine sealskin. Metal parts finished in nickel and black enamel. Black leather bellows.

MISCELLANEOUS: Autographic feature. Two tripod sockets. Range Finder Rising and falling front.

### *Prices*

No. 1A AUTOGRAPHIC KODAK <i>Special</i> , with Kodak Anastigmat Lens, <i>f.6.3</i> , 5-inch focus, and Kodamatic shutter . . . . .	\$60.00
Long-grain Leather, Velvet-lined Case, with strap . . . . .	4.50
Autographic Film Cartridge, 12 exposures (No. A 116) . . . . .	.60
Ditto, 6 exposures . . . . .	.30
Kodak Portrait Attachment (see page 32) . . . . .	.75
Kodak Self Timer (see page 32) . . . . .	1.25

*The prices of camera and film include the Excise Tax*



## No. 2C Autographic KODAK *Special*

With the famous Eastman-made combination, Kodak Anastigmat lens  $f.6.3$  and Kodamatic shutter, this *Special* is ready for pictures—even the “hard-to-get” kind—that are a genuine joy.

Equipment details such as the Kodak Range Finder, rising and falling front,

and counter-sunk autographic attachment give the 2C *Special* distinction in keeping with the excellence of its lens and shutter. Picture size,  $2\frac{7}{8} \times 4\frac{7}{8}$  inches, a proportion that lets the picture in.

## DESCRIPTIVE DETAILS

SIZE OF PICTURE:  $2\frac{7}{8} \times 4\frac{7}{8}$  inches.

SIZE OF KODAK:  $1\frac{9}{16} \times 8\frac{3}{4} \times 3\frac{7}{8}$  inches.

CAPACITY WITHOUT RELOADING: 10 exposures.

WEIGHT: 32 ounces.

FOCUS: Adjustable only with screw focusing device.

LENS AND SHUTTER: Kodak Anastigmat, *f.6.3*.

Kodamatic shutter with cable release.

SPEEDS: Seven, from  $1/150$  to  $1/2$  second, with time and "bulb" actions.

FINDER: Brilliant; reversible for horizontal or vertical pictures.

FINISH: Aluminum body covered with finest quality genuine sealskin. Metal parts finished in nickel and black enamel. Black leather bellows.

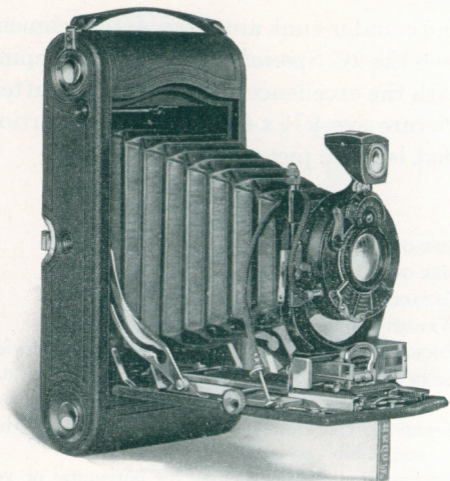
MISCELLANEOUS: Autographic feature. Two tripod sockets. Range Finder. Rising and falling front.

### *Prices*

No. 2C AUTOGRAPHIC KODAK <i>Special</i> , with Kodak Anastigmat lens <i>f.6.3</i> , 6-inch focus, and Kodamatic shutter . . . . .	\$65.00
Long-grain Leather, Velvet-lined Case, with strap . . . . .	5.00
Autographic Film Cartridge, 10 exposures (No. A 130) . . . . .	.75
Ditto, 6 exposures . . . . .	.45
Kodak Portrait Attachment (see page 32) . . . . .	.75
Kodak Self Timer (see page 32) . . . . .	1.25

*The prices of camera and film include the Excise Tax*





## Nos. 3 and 3A Autographic KODAKS *Special*

These *Specials* are just as good hand cameras as can be made for their picture size. With high-grade, high-speed lens and shutter equipment and Kodak Range Finder both represent the nearest approach to perfection in hand camera proficiency.

Through the addition of the Combination Back, both may be used with Kodak Cut Film, regular or *Super Speed*.

## DESCRIPTIVE DETAILS

**SIZE OF PICTURES:** No. 3,  $3\frac{1}{4} \times 4\frac{1}{4}$  inches; No. 3A,  $3\frac{1}{4} \times 5\frac{1}{2}$  inches. **SIZE OF KODAK:** No. 3,  $1\frac{7}{8} \times 4\frac{1}{2} \times 8$  inches, No. 3A,  $2 \times 4\frac{3}{4} \times 9\frac{1}{2}$  inches.

**CAPACITY:** No. 3, 12; No. 3A, 10 exposures.

**WEIGHT:** No. 3, 32 ounces; No. 3A, 42 ounces.

**FOCUS:** Adjustable, with rack and pinion for focusing, also regular focusing scale; No. 3 also equipped with spirit level; No. 3A, with Kodak Range Finder. Rising and falling front.

**LENSES:** See *Prices*. **SHUTTERS:** Kodamatic, Ilex Acme or Optimo. **SPEEDS:** Kodamatic—seven, No. 3,  $1/200$  to  $1/2$  second; No. 3A,  $1/150$  to  $1/2$ .

**FINISH:** Aluminum body covered with Persian Morocco. Metal parts finished in nickel and black enamel. Brilliant finder. Black leather bellows. Autographic feature. Two tripod sockets.

### Prices

<b>AUTOGRAPHIC KODAK Special</b> , with Kodak Anastigmat lens <i>f</i> .6.3, 5-inch focus on No. 3; $6\frac{3}{4}$ -inch focus on No. 3A; and Kodamatic Shutter . . . . .	No. 3	No. 3A
	\$55.00	\$70.00
With Ilex Acme or Optimo Shutter . . . . .	45.00	60.00
<b>With Bausch &amp; Lomb Kodak Anastigmat lens</b> <i>f</i> .6.3, No. 2— $5\frac{1}{4}$ -inch focus on No. 3; No. 4— $6\frac{3}{4}$ -inch focus on No. 3A; and Kodamatic Shutter . . . . .	70.00	90.00
With Ilex Acme or Optimo Shutter . . . . .	60.00	80.00
<b>With Bausch &amp; Lomb Tessar Series IIb Anastigmat lens</b> <i>f</i> .6.3, No. 4— $5\frac{1}{4}$ -inch focus on No. 3; No. 5K— $7\frac{1}{4}$ -inch focus on No. 3A; and Kodamatic Shutter . . . . .	80.00	100.00
With Ilex Acme or Optimo Shutter . . . . .	70.00	90.00
Grain Leather, Velvet-lined Case, with strap . . . . .	4.75	5.25
Soft Leather Carrying Bag . . . . .	2.25	2.50
Combination Back for cut film or plates . . . . .	4.50	5.00
Double Glass Plate Holders, each . . . . .	1.50	1.50
Kodak Cut Film Sheaths, each . . . . .	.10	.15
Kodak Cut Film, package of 12 . . . . .	.67	.93
<b>Autographic Film Cartridge</b> , 12 exposures (No. A 118) for No. 3; 10 exposures (No. A 122) for No. 3A . . . . .	.90	.90
Ditto, 6 exposures . . . . .	.45	.55
Kodak Portrait Attachment (see page 32) . . . . .	.75	.75
Kodak Self Timer (see page 32) . . . . .	1.25	1.25

*The prices of cameras and film include the Excise Tax*



## Nos. 0, 2, 2A, 3 and 2C BROWNIES

While these Brownies offer the easiest possible means for making pictures, they are nevertheless carefully made in Kodak workshops and must conform to Eastman standards. They cost very little as a glance at the prices prove but they accomplish a lot.

### DESCRIPTIVE DETAILS

SIZE OF PICTURES: No. 0,  $1\frac{5}{8} \times 2\frac{1}{2}$  inches; No. 2,  $2\frac{1}{4} \times 3\frac{1}{4}$  inches; No. 2A,  $2\frac{1}{2} \times 4\frac{1}{4}$  inches; No. 2C,  $2\frac{7}{8} \times 4\frac{7}{8}$  inches; No. 3,  $3\frac{1}{4} \times 4\frac{1}{4}$  inches.

SIZE OF CAMERAS: No. 0,  $2\frac{5}{8} \times 3\frac{3}{8} \times 4\frac{1}{8}$  inches; No. 2,  $3\frac{1}{4} \times 4 \times 5\frac{5}{8}$  inches; No. 2A,  $3\frac{7}{16} \times 5\frac{1}{8} \times 6\frac{1}{8}$  inches; No. 2C,  $3\frac{7}{8} \times 6\frac{1}{4} \times 7\frac{1}{4}$  inches; No. 3,  $4\frac{3}{8} \times 5\frac{1}{8} \times 6\frac{1}{8}$  inches.

CAPACITY WITHOUT RELOADING: No. 0, 8 exposures; No. 2, 6 exposures; No. 2A, 12 exposures; No. 2C, 10 exposures, No. 3, 12 exposures.

WEIGHT: No. 0, 8 ounces; No. 2, 15½ ounces; No. 2A, 19½ ounces; No. 2C, 28 ounces; No. 3, 25 ounces.

FOCUS: Fixed only.

LENSES: Nos. 0 and 2, Meniscus; Nos. 2A, 3 and 2C, Meniscus Achromatic.

SHUTTERS: No. 0, Eastman Rotary, one stop and time action; Nos. 2, 2A, 3 and 2C, Eastman Rotary, 3 stops and time action.

FINDERS: Two ground glass, for vertical or horizontal pictures.

FINISH: Metal parts in nickel and black enamel. Body covered with imitation leather.

MISCELLANEOUS: Nos. 3 and 2C have two tripod sockets.

### Prices

	No.0	No.2	No.2A	No.3	No.2C
Nos. 0 and 2 Brownie Cameras, Meniscus lenses, Eastman Rotary shutters	\$2.00	\$2.50			
Nos. 2A, 3 and 2C Brownie Cameras, Meniscus Achromatic lenses, Eastman Rotary shutters			\$3.50	\$4.50	\$5.00
Brownie Carrying Case, with strap (No. 0, without strap)	1.00	1.25	1.50	1.60	1.60
N. C. Film Cartridge, 8 exposures, 1⅝ x 2½ (No. 127) for No. 0	.25				
Ditto, 6 exposures, 2¼ x 3¼ (No. 120) for No. 2		.25			
Ditto, 12 exposures, 2½ x 4¼ (No. 116) for No. 2A; 3¼ x 4¼ (No. 124) for No. 3			.60	.90	
Ditto, 6 exposures		.30		.45	
Ditto, 10 exposures, 2⅞ x 4⅞ (No. 130) for No. 2C					.75
Brownie Tripod Adapter	.25	.25	.25		
Kodak Portrait Attachment (See page 32)	.75	.75	.75	.75	.75

*The prices of cameras and film include the Excise Tax*

# Nos. 2 and 2A Folding Autographic BROWNIES

When you want a camera that's simple, substantial—and inexpensive, as well—ask your dealer to show you the Folding Brownies.

Look at the Nos. 2 and 2A, for example. Notice their Kodak Ball Bearing Shutters, tested lenses, focusing scales. Notice especially the presence of the autographic attachment, proof positive the cameras are Eastman-made. That's your assurance of dependability and—good pictures.

## DESCRIPTIVE DETAILS

**SIZE OF PICTURES:** No. 2,  $2\frac{1}{4} \times 3\frac{1}{4}$  inches; No. 2A,  $2\frac{1}{2} \times 4\frac{1}{4}$  inches.

**SIZE OF CAMERAS:** No. 2,  $1\frac{1}{4} \times 3\frac{1}{8} \times 6\frac{1}{2}$  inches; No. 2A,  $1\frac{7}{16} \times 3\frac{3}{8} \times 7\frac{7}{8}$  inches.

**CAPACITY WITHOUT RELOADING:** No. 2, 6 exposures; No. 2A, 12 exposures.

**WEIGHT:** No. 2, 19 ounces; No. 2A,  $25\frac{1}{2}$  ounces.

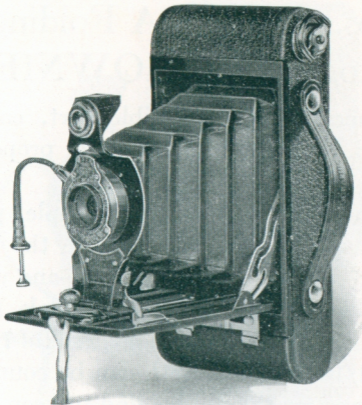
**FOCUS:** Adjustable, with automatic focusing lock.

**LENSES:** Meniscus Achromatic; or Rapid Rectilinear; No. 2,  $3\frac{3}{4}$ -inch focus; No. 2A, 5-inch focus.

**SHUTTER:** Kodak Ball Bearing, with cable and finger release.

**SPEEDS:** No. 2,  $1/25$  and  $1/50$  second; No. 2A,  $1/25$ ,  $1/50$  and  $1/100$  second, with time and "bulb" actions.

**FINDER:** Ground glass, reversible for vertical or horizontal pictures.



**FINISH:** Metal parts finished in nickel and black enamel. Metal body covered with durable imitation leather. Black bellows.

**MISCELLANEOUS:** Autographic feature. Two tripod sockets.

*Prices*

	No. 2	No. 2A
FOLDING AUTOGRAPHIC BROWNIE, with Meniscus Achromatic lens and Kodak Ball Bearing shutter . . . . .	\$ 9.00	\$10.00
With Rapid Rectilinear lens . . . . .	11.00	12.00
Carrying Case for Folding Autographic Brownie, with strap . . . . .	1.50	1.60
Autographic Film Cartridge, 12 exposures (No. A 116) for No. 2A . . . . .		.60
Ditto, 6 exposures (No. A 120) for No. 2 . . . . .	.25	
Ditto, 6 exposures (No. A 116) for No. 2A . . . . .		.30
Kodak Portrait Attachment (see page 32) . . . . .	.75	.75
Kodak Self Timer (see page 32) . . . . .	1.25	1.25

*The prices of cameras and film include the Excise Tax*

# Nos. 2C and 3A Folding Autographic BROWNIES

Cameras of the sensible sort, easily worked, sturdily constructed, properly priced.

Both make pictures of ample proportions— $2\frac{7}{8} \times 4\frac{7}{8}$  inches with the No. 2C,  $3\frac{1}{4} \times 5\frac{1}{2}$  with the No. 3A—and with tested lenses and reliable Kodak Ball Bearing Shutters (snapshot speeds of  $1/25$ ,  $1/50$ ,  $1/100$  second) both can be counted on for pictures you'll be glad to keep.

## DESCRIPTIVE DETAILS

**SIZE OF PICTURES:** No. 2C,  $2\frac{7}{8} \times 4\frac{7}{8}$  inches; No. 3A,  $3\frac{1}{4} \times 5\frac{1}{2}$  inches.

**SIZES OF CAMERAS:** No. 2C,  $1\frac{3}{4} \times 3\frac{3}{4} \times 8\frac{11}{16}$  inches; No. 3A,  $1\frac{11}{16} \times 4\frac{5}{16} \times 9\frac{5}{16}$  inches.

**CAPACITY WITHOUT RELOADING:** 10 exposures.

**WEIGHT:** No. 2C, 27 ounces; No. 3A, 32 ounces.

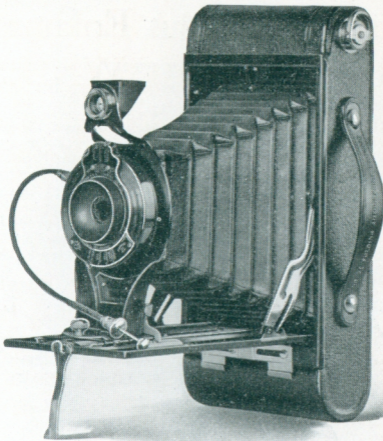
**FOCUS:** Adjustable, with automatic focusing lock.

**LENSES:** Meniscus Achromatic, or Rapid Rectilinear; No. 2C,  $5\frac{1}{2}$ -inch focus; No. 3A,  $6\frac{1}{4}$ -inch focus.

**SHUTTER:** Kodak Ball Bearing with cable and finger release.

**SPEEDS:**  $1/25$ ,  $1/50$  and  $1/100$  second; and time and "bulb" actions.

**FINDER:** Ground glass; reversible for vertical or horizontal pictures.



**FINISH:** Metal parts finished in nickel and black enamel. Metal body covered with durable imitation leather. Black bellows.

**MISCELLANEOUS:** Autographic feature. Two tripod sockets.

*Prices*

	No. 2C	No. 3A
FOLDING AUTOGRAPHIC BROWNIE with Meniscus Achromatic lens and Kodak Ball Bearing shutter . . . . .	\$13.00	\$14.50
With Rapid Rectilinear lens . . . . .	15.00	17.00
Carrying Case, with strap . . . . .	1.70	1.80
Autographic Film Cartridge, 10 exposures, $2\frac{7}{8} \times 4\frac{7}{8}$ (No. A 130) for No. 2C; 10 exposures, $3\frac{1}{4} \times 5\frac{1}{2}$ (No. A 122) for No. 3A . . . . .	.75	.90
Ditto, 6 exposures . . . . .	.45	.55
Kodak Portrait Attachment (see page 32) . . . . .	.75	.75
Kodak Self Timer (see page 32) . . . . .	1.25	1.25

*The prices of cameras and film include the Excise Tax*



# Kodak Auto-Focus Enlarger



Slide the camera up or down and the image size changes, but the focus stays sharp.

The apparatus attaches to any table top; accommodates film or plate negatives up to 4 x 6 inches; makes prints on Bromide paper from 1½ to 3½ times the negative size. Maximum enlargement, 14 x 21 inches. A Mazda Lamp (not supplied) of from 75 to 200 watts is required for printing. Price complete with Kodak Anastigmat lens, electric cord and plug, and set of six flexible metal masks (including Excise Tax) . . . . . \$35.00

Diffusing Disc for soft focus effects . . . . . 1.00

## Kodak Portrait Attachments

Two supplementary lenses that slip over the regular camera lens and render close up portraits in correct focus. Portrait Attachment for *sharp* focus; Portrait *Diffusion* Attachment for *soft* focus.

Kodak Portrait Attachment (for all cameras) . . . . . \$0.75  
 Kodak Portrait Diffusion Attachment . . . \$1.25 and 1.50  
 (According to size)

## Kodak Self Timer

Attaches to any cable release and presses the button for you at any interval from ½ second to 1 minute. Price . . . . . \$ 1.25

## Kodak Cut Film

Offers all the advantages of plates with none of their drawbacks, and adds Cut Film convenience. Two speeds, regular and *Super Speed*—extra fast. Available for plate-holding cameras including both regular and *Special* models of the Nos. 3 and 3A Kodaks when equipped with Combination Backs and Kodak Cut Film Sheaths.

	Price per doz.			
	2¼ x 3¼	3¼ x 4¼	3¼ x 5½	4 x 5
Regular. . . . .	\$ .46	\$ .67	\$ .93	\$ .93
<i>Super Speed</i> . . . . .	.52	.77	1.03	1.03

Prices of film include the Excise Tax

RED CROSS DRUG COMPANY

828 STATE ST.

SANTA BARBARA, CALIF.