

HONEYWELL PHOTOGRAPHIC PRODUCTS

ROLLEI 35 world's smallest 35mm full frame camera



Measuring only 1¼" by 3⅞" by 2⅜", the Rollei 35 easily slips into a shirt or coat pocket. Yet it uses standard 35mm film and produces regular full frame 35mm transparencies or negatives on 12, 20, or 36 exposure rolls.

The built in CdS exposure metering system uses a match needle system and is coupled to the aperture, shutter and film speed controls for simple and accurate exposures.

The incredibly sharp 40mm Tessar lens retracts into the camera body when not in use. The shutter will not release unless the lens is extended and locked. Aperture settings from f/3.5 to f/22 with click stops at every ⅓ stop are pro-

vided. Shutter speeds are from 1/2 to 1/500 second plus bulb.

An engraved bright frame in the oversized viewfinder outlines picture composition. The exposure counter automatically resets when the back is opened. The film speed dial is calibrated for ASA values from 25 to 1600. The tripod socket accepts standard ¼-20 tripod screws. Flash synchronization is through the hot shoe.

The Rollei 35 comes in a chrome and black leatherette finish or in all black finish.

SPECIFICATIONS:

SIZE:

1¼" by 3⅞" by 2⅜"

WEIGHT:

13½ ounces

LENS:

40mm f/3.5 Tessar by Carl Zeiss with 57° angle of view.

BATTERY:

PX13 or E625 mercury cell (included)

SHUTTER:

Compur with X flash synchronization at all speeds from 1/2 to 1/500 second and bulb

EXPOSURE METERING:

match needle CDS type by Gossen

FOCUSING:

engraved scale on outer lens ring with depth of field indication

Cat. No. 1060	ROLLEI 35 chrome with wrist loop and lens cap	\$229.50
Cat. No. 1062	ROLLEI 35 black with wrist loop and lens cap	\$249.50

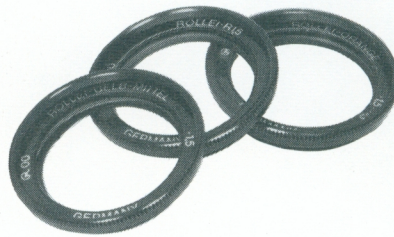
HONEYWELL PHOTOGRAPHIC PRODUCTS

ROLLEI 35 ACCESSORIES

for the world's smallest
35mm full frame camera



SOFT LEATHER CASE & WRIST LOOP



FILTERS



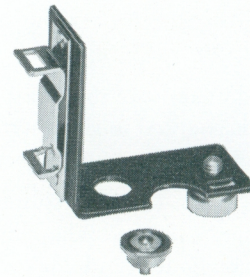
LENS HOOD



HARD LEATHER BELT CASE



FLASH CUBE HOLDER



FLASH BRACKET
AND HOT SHOE ADAPTER

Cat. No.		Cat. No.	
1061	Soft Leather Case	1155	Orange Filter
	\$10.95		\$ 8.95
1063	Hard Leather Belt Case	1156	Neck Strap
	\$10.95		\$ 2.75
1064	Eveready Leather Case	1157	Wrist Loop
	\$19.50		\$ 2.75
1150	Lens Hood	226	Flash Cube Holder with Hot Shoe Contact
	\$ 2.00		\$ 7.95
1151	Medium Yellow Filter	342	Electronic Flash Bracket with Hot Shoe to PC Adapter
	\$ 6.95		\$ 8.95
1152	Lens Cap	460	Hot Shoe to PC Adapter
	\$.95		\$ 1.50
1153	R1.5 Color Filter (Skylight)		
	\$ 8.95		
1154	H-1 Haze Filter		
	\$ 8.95		

HONEYWELL PHOTOGRAPHIC PRODUCTS

ROLLEIFLEX SL 26 cartridge convenience with Rollei quality



The SL 26 is the smallest single lens reflex cartridge camera on the market, measuring 3½" by 4" by 2¾" and weighing only 19 ounces. Exposures are set with the through the lens CdS metering system by leveling the indicating needle within the viewfinder. The meter is automatically set for the correct ASA film speed by a notched coding on each film cartridge.

A 40mm f/2.8 Zeiss Tessar lens is standard and has a 52° angle of view. A 28mm, f/3.2 Pro-Tessar wide angle lens with a 70° angle of view and an 80mm, f/4.0 Pro-Tessar telephoto lens with a 27½° angle of view are also available. Only

SPECIFICATIONS:

SIZE:

4" x 2¾" x 3½", including standard lens

WEIGHT:

19 oz. with standard lens

LENS:

Interchangeable Carl Zeiss lenses, 40mm lens is standard

SHUTTER:

Compur between the lens shutter with speeds from 1/2 to 1/500 second plus bulb with X flash synchronization at all speeds

the front elements are exchanged when changing lenses, thus protecting the camera interior from stray dust and resulting in lighter and smaller wide angle and telephoto lenses.

The Compur shutter offers X flash synchronization through its full range of speeds from 1/2 to 1/500 second plus bulb.

The camera comes equipped with a hot shoe built into the top of the pentaprism, a rapid advance lever, built in neck-strap loops and an easily accessible meter battery compartment on the side.

EXPOSURE METERING:

CdS through the lens system coupled to shutter speed and aperture controls with indicator needle in viewfinder

BATTERY:

PX13 on E625 mercury cell (included)

FOCUSING:

Oversize brilliant focusing screen with split-image range-finder wedge in center surrounded by a large micro prism band

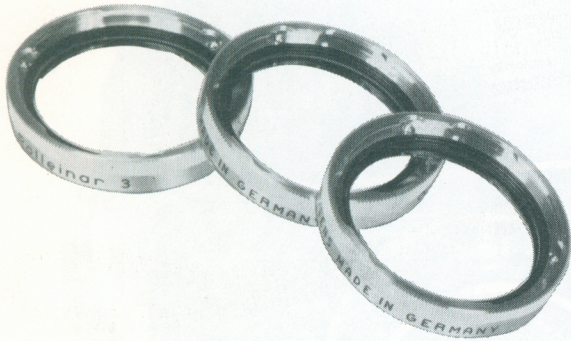
Cat. No. 1026 ROLLEIFLEX SL 26

~~\$329.50~~
\$299.50

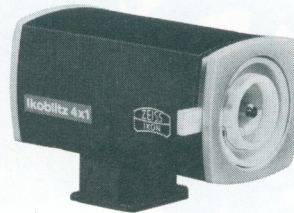
HONEYWELL PHOTOGRAPHIC PRODUCTS

ROLLEIFLEX SL 26 ACCESSORIES

cartridge convenience with
Rollei quality



ROLLEINAR CLOSE UP LENSES



FLASH CUBE HOLDER



CASE



28MM LENS



80MM LENS

Cat. No.

1025	Eveready Case	\$ 19.50
1090	28mm f/3.2 Wide Angle Lens	\$119.50 139.50
1195	Case for 28mm Lens	\$ 12.95
1091	80mm, f/4 Telephoto Lens	\$139.50 149.50
1196	Case for 80mm Lens	\$ 12.50
1191	Rolleinar Lens 1, Bay I (42-20 inches)	\$ 13.50
1192	Rolleinar Lens 2, Bay I (22-14½ inches) ..	\$ 13.50

Cat. No.

1193	Rolleinar Lens 3, Bay I (15-12 inches)	\$ 13.50
1194	Rolleinar Lens 4, Bay I	\$ 14.50
1197	Push-on Lens Hood 40mm Lens	\$ 14.50
1198	Screw-in Lens Hood 80mm Lens	\$ 8.50
1199	Adapter Ring for Lenshood and Filter 28mm lens	\$ 9.50
226	Flash Cube Holder	\$ 7.95
460	Hot Shoe to PC adapter	\$ 1.50

SEE PAGES 18 & 19 for Bayonet I filters and accessories for black & white and color photography with the SL 26.

HONEYWELL PHOTOGRAPHIC PRODUCTS

ROLLEI 16S CAMERA the precision mini-camera

The Rollei 16S is a small, easily pocketed, automatic sub-miniature camera using 16mm, single perforated film. Its convenient 12x17mm format permits extended enlargements and screen filling color slides. The Rollei 16S automatically selects the best exposure time and lens opening between 1/30 and 1/500 second and f/2.8 and f/22. Maximum optical performance is achieved with a focusing 25mm Zeiss Tessar f/2.8 lens. Recessed into the body to eliminate the need for a lens-hood, the short focal length of the lens offers amazing depth of field even at full aperture. The green "go" signal in the viewfinder indicates when adequate light is available and that the shutter speed and aperture have been automatically and uniquely set for the fastest shutter speed possible. This insures sharp pictures of moving subjects and reduces risk of camera shake or movement during exposure. For flash shots and manual exposures the Rollei 16S uses 1/30 second shutter speed and aperture choices range from f/2.8 to f/22. The Rolleiflash 16 attaches to the base end of the camera and uses AG series flash lamps. Electronic flash synchronizes through the connector socket located on the base end of the camera or on the Tripod Adapter.

Time exposure "B" of any length can be done with aperture selections from f/2.8 to f/22. (Cable release socket provided)



SPECIFICATIONS FOR THE ROLLEI 16S CAMERA

SIZE:

1 1/8" high, 1 3/4" wide and 4 3/8" long

WEIGHT:

9 1/8 ounces

FILM:

Super 16 cassetts with Black & White, Color Slide and Color Print Films yielding, 18 exposures, 12 x 17mm

SHUTTER AND ADVANCING MECHANISM:

Film transport automatically cocks shutter and advances film counter, film advances only after exposure. Shutter has double exposure prevention.

FOCUSING:

With distance scale using settings from 16 inches to infinity

METER SETTINGS:

ASA and DIN film settings from ASA 12 to 200, as well as filter value compensation (3 Exposure Values by one-third click-stop intervals)

LENS MOUNT:

4-lug bayonet (Bay. "O") for filters and Mutar lenses

VIEW FINDER:

Optical brilliant-line, Albada type, mechanically parallax compensated, with three frames: the entire frame for the wide angle lens; the larger frame for the normal lens; and an inner frame for the telephoto

Cat. No. 2115	ROLLEI 16S CAMERA with wrist loop and leather case.....	\$199.50
Cat. No. 2114	ROLLEI 16S KIT. Camera with wrist loop, leather case, measuring chain, Rolleiflash 16 with case, tripod adapter, medium yellow filter, H-1 filter.	\$237.50

ROLLEI 16S ACCESSORIES

Lenses

Cat. No. 2126	Wide Angle Mutar	\$149.50
Cat. No. 2127	Telephoto Mutar	\$179.50
Cat. No. 2101	Leather Case (replacement)	\$ 13.50
Part No. 96010.41.0	Spare Wrist Loop Rollei 16	\$ 2.20

Cat. No. 2105	Measuring Chain for Distances 16 to 24 inches	\$ 6.00
Cat. No. 2106	Rolleiflash 16 (Less Battery)	\$ 19.95
Cat. No. 2107	Tripod Adapter	\$ 13.95

Filters

Cat. No. 2110	Medium Yellow Filter	\$ 8.95
Cat. No. 2112	Green Filter	\$ 8.95
Cat. No. 2113	Orange Filter	\$ 8.95
Cat. No. 2120	H-1 Filter	\$ 10.50
Cat. No. 2125	R1.5 Filter	\$ 10.50

Slide Mounts

Cat. No. 2131	Slide Mounts with Anti-Newton Glass, Box of 20	\$ 3.50
Cat. No. 1761	Replacement Anti-Newton Glass, Package of 40 pieces	\$ 2.95

Films

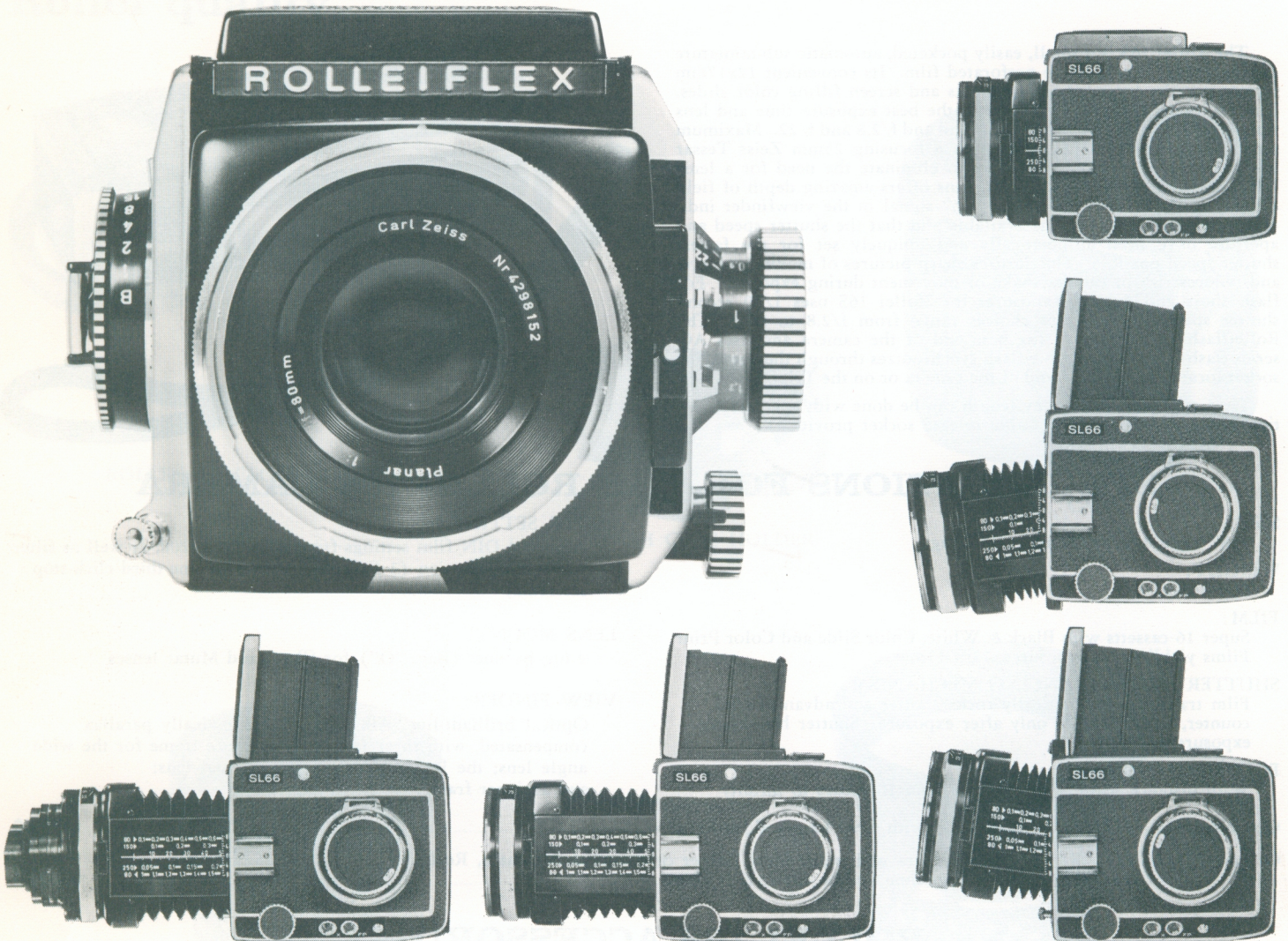
Cat. No. 2141	XT Panchromatic Twin Pack	\$ 2.95
Cat. No. 2142	PX Panchromatic Twin Pack	\$ 2.95
Cat. No. 2143	XX Panchromatic Twin Pack	\$ 2.95
Cat. No. 2146	Kodachrome II Single Pack	\$ 1.75
Cat. No. 2147	Ektachrome MS Single Pack	\$ 1.75
Cat. No. 2148	Ektacolor S Single Pack	\$ 2.25
Cat. No. 2150	Set of 6 Empty Film Cassettes with cans	\$ 2.50

Prepaid, Postpaid Processing Mailers

Cat. No. 2151	Processing Mailer for Black and White Film	\$ 3.95
Cat. No. 2152	Processing Mailer for Color Slides	\$ 2.50
Cat. No. 2153	Processing Mailer for Color Prints	\$ 6.95

HONEYWELL PHOTOGRAPHIC PRODUCTS

ROLLEIFLEX SL66 the absolute ultimate



The SL66 is the new standard for fine photographic equipment. Created by the world famous Rollei-Werke, West Germany, the SL66 is the culmination of more than 40 years of research, design and experience in 2¼ precision camera manufacturing.

Unexcelled image brightness is due to a combination of two factors: the exceptionally sharp Carl Zeiss optics; working within a bellows system that baffles and traps all peripheral light.

Using its built-in bellows gives the SL66 additional exclusives: The lens and bellows tilt eight degrees up or down for an extended zone of sharpness according to the Scheimpflug Principle. Thanks to the bellows and reverse lens capabilities, negative images that are larger than actual size with optimum lens performance can easily be created without the purchase of additional accessories.

The exclusive pneumatic mirror dampening system makes hand held exposures possible at slower speeds, since mirror vibration is far less than with any other 2¼ single lens reflex camera. There is no image blackout since the mirror is an instant return type. For special exposure applications the mirror can easily be locked up.

Either 120 or 220 film can be used with the standard magazine. The exposure counter automatically adjusts for either size and gives an audible and visual signal to indicate the end of the film roll. The dark slide can be stored in a slot on the magazine back when not in use and the dark slide's handle holds the end of the film box as a film type reminder.

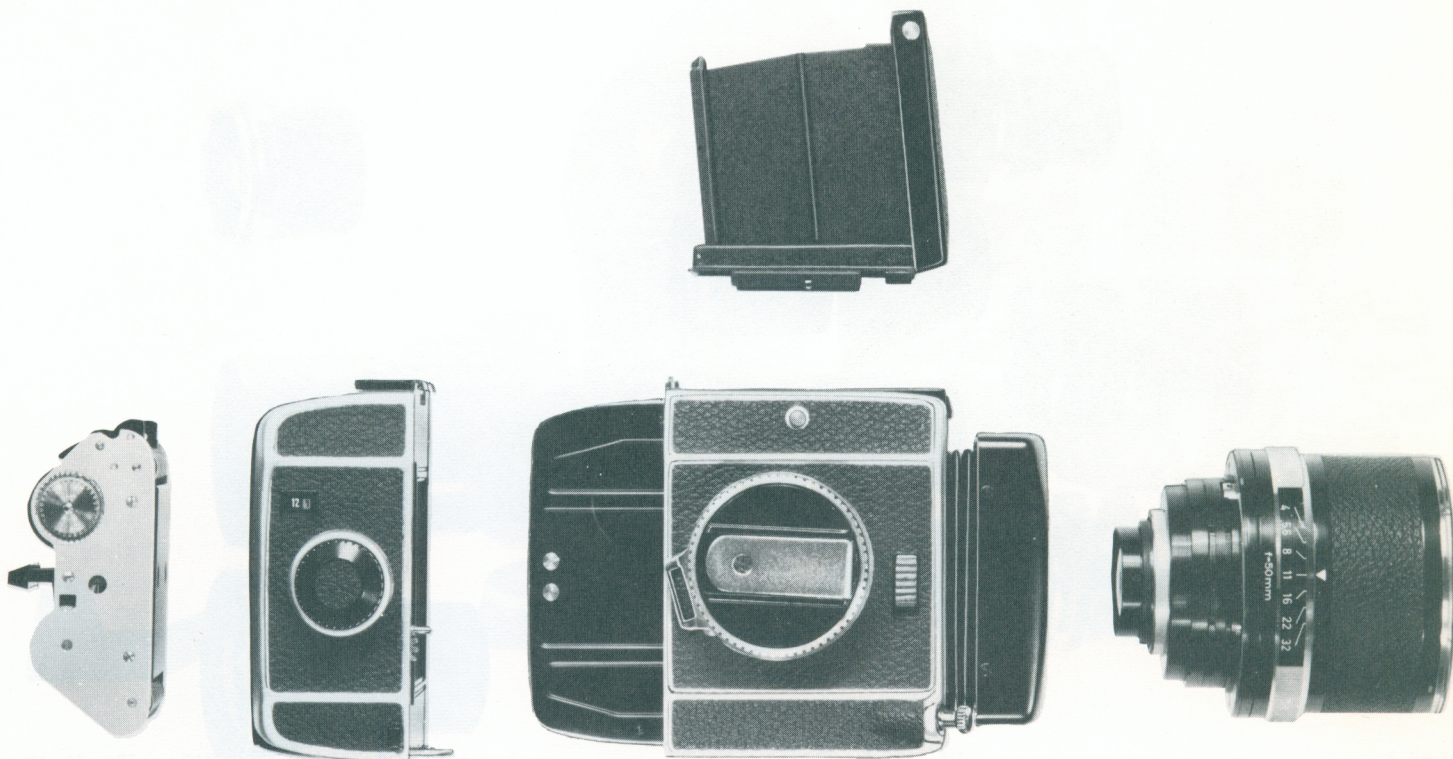
A rapid wind crank, with a handle that folds into the winding knob, is standard. Film speeds range from 1 second to 1/1000 second plus bulb. Precise multiple exposures can be made without film magazine removal.

Cat. No. 1066	ROLLEIFLEX SL 66 with interchangeable 120/220 magazine and Zeiss Planar 80mm f/2.8 lens	\$1350.00
Cat. No. 1067	ROLLEIFLEX SL 66 less lens & magazine	\$ 835.50
Cat. No. 1068	ROLLEIFLEX SL 66 less lens with magazine	\$1065.00

HONEYWELL PHOTOGRAPHIC PRODUCTS

ROLLEIFLEX SL 66

the absolute ultimate



Specifications

CAMERA TYPE:

single lens reflex, 2 1/4" by 2 1/4", 120/220 roll film

WEIGHT:

4 lbs., 3 oz. with magazine back and 80mm f/2.8 lens

SIZE:

5-5/16" wide between the outer edges of the knobs
5-5/16" from front to back without lens attached
4-7/16" high with the focusing hood collapsed

FOCUSING:

standard focusing screen has a central micro prism grid and the standard focusing hood is collapsible with a pop-up magnifier. Both focusing screen and hood are interchangeable. Has a depth of field preview control

SHUTTER SPEEDS:

1 second to 1/1000 plus bulb

OPERATING CONTROLS:

all visible from above

MIRROR:

quick return pneumatic dampened with pre-release to lock mirror out of light path

BELLOWS:

extends 50mm and can be tilted $\pm 8^\circ$ up or down

SCALES:

focusing strut indicates bellows extension and reproduction ratios for 80, 150, 120 and 80mm reversed lenses. Easily switched distance and depth of field scales provide for 50, 80, 150 and 250mm lenses on focusing knob

SYNCHRONIZATION:

for X and FP with positive locking cord connector and flash accessory shoe

TRIPOD MOUNTING:

3/8" threading with 1/4-20 socket bushing provided

FILM TRANSPORT:

crank operated with override for intentional multiple exposures

ROLLEIFLEX SL 66 INTERCHANGEABLE LENSES

creating the super system



These superb Carl Zeiss lenses are specially formulated for the Rolleiflex SL 66. All are color corrected to precise Zeiss and Rollei standards. All have quick-change bayonet mounts. Lenses from 40mm to 250mm feature automatic diaphragms and 1/2 stop click aperture controls.

Cat. No. 1082—Zeiss Distagon 40mm f/4.0 wide angle lens with fully automatic diaphragm. Aperture range f/4.0 to f/32. Weight 45 oz.; length 5"; diameter 4-1/16"; number of elements 10; angle of view, diagonal 88°. Minimum focusing distance less than 2". **\$875.00**

Cat. No. 1072—Zeiss Distagon 50mm f/4.0 wide-angle lens with fully automatic diaphragm is reversible for macro work in which the scale of reproduction without extension tubes is 3:1. Aperture range f/4.0 to f/32; weight 21 oz.; length 3 3/4"; diameter 3 1/8"; number of elements 7; angle of view, diagonal 75°. Minimum focusing distance: 2". (Lens in normal position)..... **\$560.00**

Cat. No. 1073—Zeiss Planar 80mm f/2.8 supplied as standard with the Rolleiflex SL 66 has a fully automatic diaphragm. This lens is also reversible for macro work in which the scale of reproduction without extension tubes is 1.6:1. Aperture range f/2.8 to f/22; weight 11 oz.; length 2 1/2"; diameter 3 1/8"; number of elements 7; angle of view, diagonal 52°. Minimum focusing distance: 6 1/2" (lens in normal position). **\$365.00**

Cat. No. 1074—Zeiss S-Planar 120mm f/5.6 lens, with fully automatic diaphragm, is particularly well suited for close-up and portrait photography. Reversible for macro work in which the scale of reproduction without extension tubes is 0.8:1. Aperture range f/5.6 to f/45; weight 16 oz.; length 3 1/2"; diameter 3 1/8"; number of elements 6; angle of view, diagonal 36°. Minimum focusing distance: 14" (lens in normal position)..... **\$650.00**

Cat. No. 1075—Zeiss Sonnar 150mm f/4.0 with fully automatic diaphragm. The lens elements are formulated and positioned so that complete field coverage is achieved at maximum aperture. Aperture range f/4 to f/32; weight 20 1/2 oz.; length 3 3/4"; diameter 3 1/8"; number of elements 5; angle of view, diagonal 29°. Minimum focusing distance: 23 1/2". **\$500.00**

Cat. No. 1076—Zeiss Sonnar 250mm f/5.6. Fully automatic diaphragm. An exceptionally fine telephoto lens utilizing the Sonnar design and a proven f/stop of 5.6, which provides good illumination for accurate focusing. Aperture range f/5.6 to f/45; weight 25 oz.; length 5 5/8"; diameter 3 1/8"; number of elements 4; angle of view, diagonal 18°. Minimum focusing distance: 5'. **\$620.00**

Cat. No. 1077—Zeiss Tele-Tessar 500mm f/5.6. A well balanced, easy handling, long telephoto lens with built-in tripod socket and preset diaphragm. Aperture range f/5.6 to f/45; weight 3 lbs. 9 oz.; number of elements 6; angle of view, diagonal 9°. Minimum focusing distance: 19'. **\$1350.00**

Zeiss Mirotar 1000mm f/5.6 telephoto lens. Aperture f/5.6 additional f/stop control by neutral density filters; weight 36 1/2 lbs.; length 16"; mirror optic; angle of view, diagonal 4.5°. Minimum focusing distance: 72'. Please contact Carl Zeiss for price and ordering information — not supplied by Rollei/Honeywell.

HONEYWELL PHOTOGRAPHIC PRODUCTS

ROLLEIFLEX SL 66 ACCESSORIES

creating the super system



Rolleiflex SL 66 Lens Accessories:

Cat. No.

1586	40mm Extension Tube	\$ 35.00
1587	80mm Extension Tube	\$ 43.00
1597	Universal Adapter Complete	\$ 99.50
1630	Lens hood for Zeiss Distagon 50mm lens.	\$ 26.00
1631	Lens hood for 80mm Planar, 120mm S-Planar, 150mm Sonnar and 250mm Sonnar.	\$ 28.50
*1638	Adapter for 16, 25, 40, 63mm Luminars	\$ 47.50
*1639	Adapter for 100mm Luminar	\$ 47.50

*Please contact Carl Zeiss for price and ordering information on Luminar lenses — not supplied by Rollei/Honeywell.

1641	Blank Lens Board	\$ 39.50
1642	Gelatin Filter Holder	\$ 42.50
1643	Rear lens cap for all lenses	\$ 5.50
1645	Front lens cap for all lenses from 50 to 250mm	\$ 4.50
1653	Lens case for 40mm lens	\$ 37.50
1654	Lens case for 50 to 150mm lenses	\$ 29.50
1658	Lens case for 250mm lens	\$ 34.50
1659	Lens case for 500mm lens	\$ 39.50

Rolleiflex SL 66 Lens Filters:

Bayonet mount filters listed below fit all lenses from 50mm to 250mm.

Cat. No.

1591	Rolleipol polarizing screen	\$ 87.50
1632	Medium Yellow VI	\$ 39.50
1633	Green VI	\$ 39.50

1634	Orange VI	\$ 39.50
1635	Light Red VI	\$ 39.50
1636	Infra Red VI	\$ 39.50
1637	Color Correction, R1.5 VI	\$ 43.00
1649	Zeiss Softar I	\$ 62.50
1650	Zeiss Softar II	\$ 62.50
1664	Medium Yellow filter for 40mm lens	\$109.50
1665	Medium Yellow filter for 500mm lens	\$ 99.50

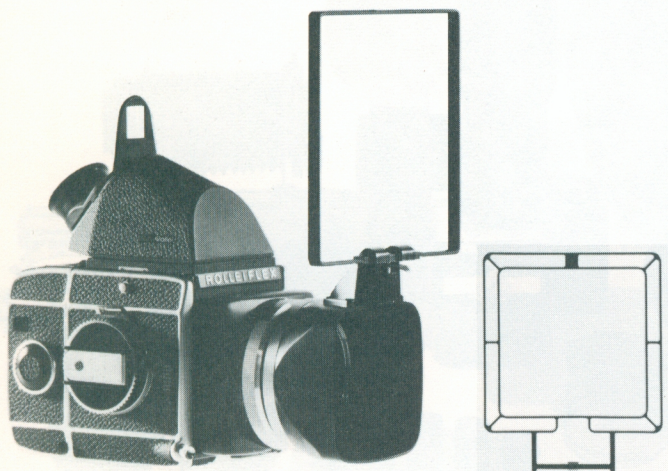
Other Accessories:

Cat. No.

1069	Rolleiflex SL 66 interchangeable 120 - 12 exposure/220 - 24 exposure magazine with protective cap.	\$229.50
1079	Eveready case for SL 66 camera.	\$ 39.50
1080	Metal Combi-Case for SL 66, lenses and accessories.	\$169.50
1081	Soft leather case for SL 66 and up to 150mm lens	\$ 29.50
1593	Leather carrying case, for SL 66, spare back, two extra lenses and miscellaneous accessories	\$ 99.50
1578	Ground glass screen for SL 66 with case.	\$ 7.50
1579	Bright focusing screen for SL 66 with case.	\$ 9.95
1580	Bright focusing screen with rangefinder wedge and case.	\$ 12.95
1581	Bright focusing screen with micro grid and case.	\$ 14.95
1599	Bright Focusing Screen with Clear Center Spot	\$ 12.95
1594	Spare Frame for SL 66 Focusing Screens	\$ 8.95
1582	Spare carrying strap	\$ 13.50
1583	Quick fastening tripod adapter	\$ 32.00
1585	Magnifying hood for SL 66	\$ 84.50

ROLLEIFLEX SL 66 ACCESSORIES

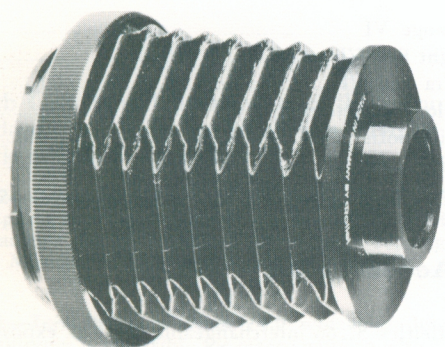
creating the super system



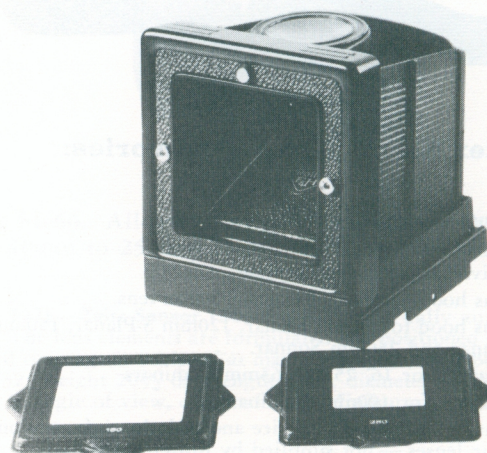
SPORTS FINDER FOR PRISM



EYEPIECE FOR THE SPORTS FRAME FINDER



MICROSCOPE ADAPTER



FRAME FINDER HOOD WITH MASKS

Other Accessories: (Cont.)

1588	Cut film adapter, less film holders	\$ 67.50	1655	Microscope Adapter	\$ 79.50
1529	Cut Film Holder	\$ 20.00	1668	6x6cm Copy Stage	\$ 64.50
1651	Frame Finder with Masks	\$ 89.50	1669	24x36mm Copy Stage	\$ 49.50
1652	Sportsfinder for Prism	\$ 49.50	1662	Focus Drive	\$ 29.50
1589	45° Prism Finder with case	\$229.50	1648	Front Bay Ring for Lum. Adapter	\$ 19.95
1501	Penta B Ocular	\$ 21.50	1670	Pair Vibration Dampers	\$ 59.50
1592	Rolleimot motor drive Remote Control	\$289.50	1595	Contoured Hand Grip	\$ 57.50
1598	Focusing Rack	\$129.50	1596	Handgrip with Release	\$ 74.50
1666	Extension Bellows with camera and lens adapters. ...	\$225.00	1640	Spare Dark Slide	\$ 2.95
1667	Macro Stage with fine focus drive	\$ 74.50	1646	Front body cap for SL 66	\$ 9.50
			1647	Rear body cap for SL 66 less magazine	\$ 9.50

HONEYWELL PHOTOGRAPHIC PRODUCTS

ROLLEIFLEX 3.5F and 2.8F/120-220 the established standards among the professionals

The Rolleiflex 2.8F 120/220, the 3.5F 120/220 and the 3.5F are probably the most widely respected and frequently used cameras in the working world of professional photography.

The expert Carl Zeiss Planar lens provides needle sharp definition and excellent contrast from the center to the corners of the $2\frac{1}{4} \times 2\frac{1}{4}$ negative at any aperture. The 2.8F 120/220 has the 80mm Planar

f/2.8 while both 3.5F's have the famous 75mm Planar f/3.5 lens.

The 2.8F 120/220 and the 3.5F 120/220 provide the ability to use the longer 220 roll film as well as the standard 120 roll film.

All three cameras also accept the Rolleikin attachments so 35mm films in 20 or 36 exposures can be used. The 2.8F 120/220 and 3.5F

120/220 are provided with a Rolleiclear focusing screen which has a $\frac{5}{8}$ " circular micro-prism in the center for quick focusing.

The 3.5F has the same bright-to-the-corner focusing screen but with a split-image range finder in the center. All three have a pop-up magnifying glass in the hood to facilitate critical focusing. The hood quickly converts to an eye-level sports finder to easily follow motion and also permits eye-level focusing. The cameras are provided with an automatic

depth of field indicator as well as an automatic parallax compensation at all distances down to less than one foot.

All three models have a shutter speed-lens opening coupled exposure meter built in which uses match needle control for proper exposures. The

metering systems can be set for ASA ranges from 12 to 1600 and

also has a filter factor control. Shutter speeds range from

1 second to 1/500 plus B. The shutters are synchronized for either

M or X at all speeds. A self timer is also provided. The rapid wind crank in all three models advances the film and cocks the shutter.

The famous Rollei film feeler mechanism in the "F" models "senses"

the exact point at which the film is taped to the paper backing

and accurately activates the exposure counter. While unintentional

double exposures are prevented there is a provision to make intentional

multiple exposures. The "feel" and balance of the F Rolleis

and their unmatched dependability are the results of many years of

experience in the hands of Europe's finest craftsmen.

Rolleiflex 2.8F 120/220, 80mm Carl Zeiss Planar f/2.8,

angle of view 53° , weighs 44 ounces and measures $5\frac{7}{8}$ " by $4\frac{3}{8}$ " by $4\frac{1}{8}$ ".

Rolleiflex 3.5F 120/220 and 3.5F, 75mm Carl Zeiss Planar f/3.5,

angle of view 56° , weighs 43 ounces and measures $5\frac{7}{8}$ " by $4\frac{3}{8}$ " by 4".

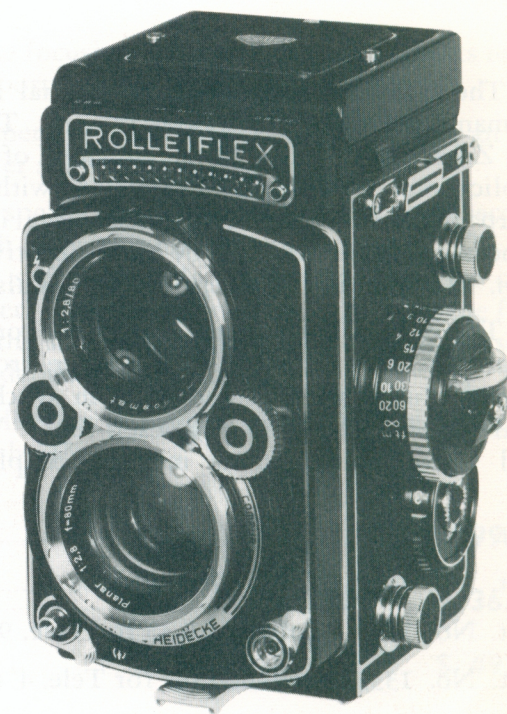
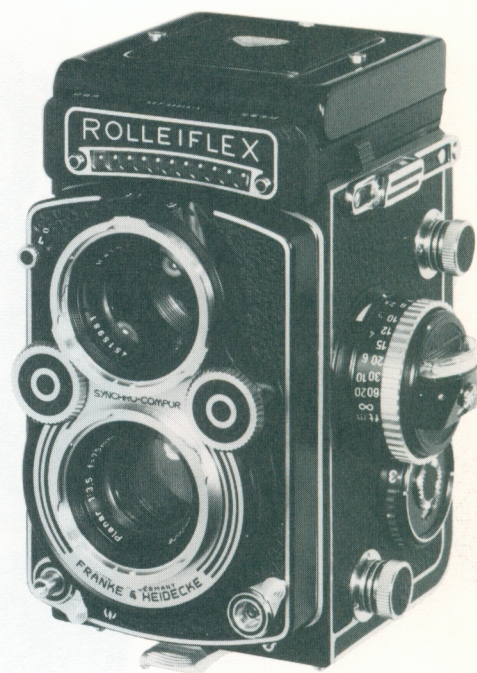
Cat. No. 1001 Rolleiflex 2.8F/120-220 **\$525.00**

Cat. No. 1002 Deluxe Leather Eveready Case
w/detachable front (2.8F 120/220) **\$ 36.50**

Cat. No. 1015 Rolleiflex 3.5F **\$425.00**

Cat. No. 1004 Rolleiflex 3.5F/120-220 (special order) **\$475.00**

Cat. No. 1016 Deluxe Leather Eveready Case
w/detachable front (3.5F 120/220 & 3.5F) **\$ 36.50**



TELE-ROLLEIFLEX

the perfect portrait camera



The Tele-Rolleiflex gives traditional Rollei performance in a semi telephoto camera. The 135mm f/4 Zeiss Sonnar has a 33 degree angle of view. For applications needing magnification with critically sharp negatives, the Tele-Rolleiflex is ideal. The camera produces 12 2¼" by 2¼" negatives on 120 film. Modification to accept 220 film is also possible.

The camera has automatic parallax compensation at all distances. Shutter speeds range from 1-1/500 second plus B with M and X flash synchronization at all speeds. The shutter has a self-timer. The shutter and f/stop combinations may be coupled or un-

coupled. There is an accessory exposure metering system which can be added. Depth of field is automatically indicated on the distance scale.

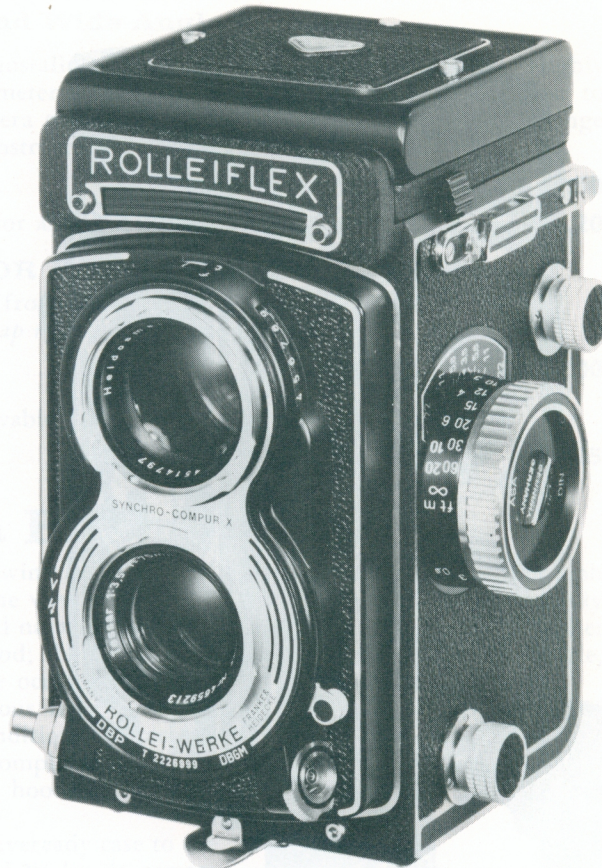
A split image rangefinder wedge is centered in the viewing screen for faster focusing. The focusing hood has a pop-up magnifier for critical focusing and quickly converts to a sports finder for following action and permits eye level focusing.

The Tele-Rolleiflex weighs 54 ounces and measures 5¾" by 4" by 5⅝".

Cat. No. 1029	Tele-Rolleiflex	\$599.00
Cat. No. 1030	Deluxe leather case	\$ 44.50
Cat. No. 1332	Rolleinar 0.35 for Tele. 9' 2" to 4' 5"	\$ 59.50
Cat. No. 1333	Rolleinar 0.7 for Tele. 4' 6½" to 3' ½"	\$ 55.00
Cat. No. 1503	Exposure Meter Kit for Tele-Rolleiflex.....	\$ 49.50

HONEYWELL PHOTOGRAPHIC PRODUCTS

ROLLEIFLEX T a multi-format camera



The Rolleiflex T offers a true Rolleiflex at an economical price and with several format options. With an optional mask set it can produce 16 1 $\frac{5}{8}$ " by 2 $\frac{1}{8}$ " exposures or 16 1 $\frac{5}{8}$ " by 1 $\frac{5}{8}$ " exposures on a roll of 120 film. Without the masks it gives the standard 12 2 $\frac{1}{4}$ " by 2 $\frac{1}{4}$ " exposures on a 120 roll. All formats have full parallax correction and automatic exposure counting.

The famous 75mm Zeiss Tessar f/3.5 lens is standard. Fast focusing is easy with the split image range-finder wedge centered in the Rolleiclear focusing screen. The pop-up magnifier helps with critical fo-

cusing. The focusing hood also quickly converts to an eye level sports finder for following motion.

The camera is prewired for installation of an exposure meter system.

Shutter speeds range from 1 second to 1/500 second plus B with X synchronization at all speeds. The aperture and speed controls are operated by one convenient lever. The rapid wind crank advances the film and cocks the shutter simultaneously. There is a self-timer and depth of field scale.

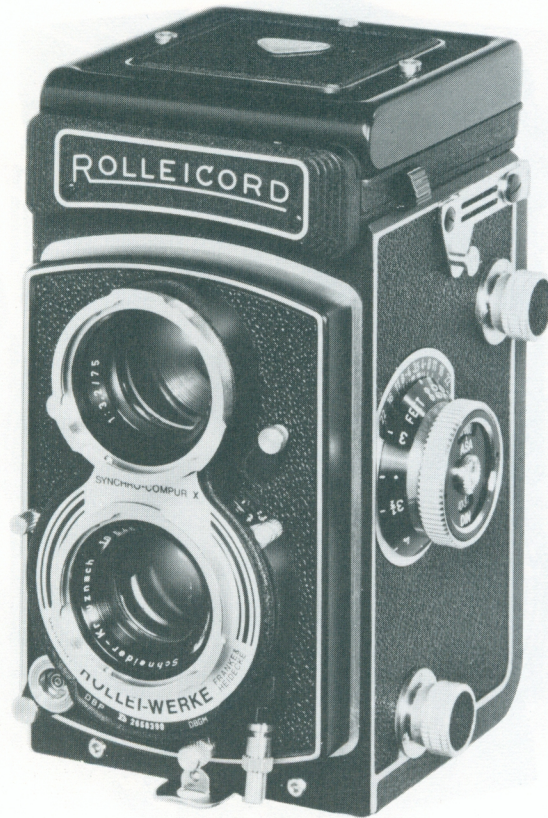
The Rolleiflex T weighs 36 ounces and measures 6" by 4 $\frac{1}{2}$ " by 3 $\frac{3}{4}$ ".

Cat. No. 1012	Rolleiflex T	\$299.50
Cat. No. 1013	Deluxe Eveready Case	\$ 36.50
Cat. No. 1503	Exposure Meter Kit for Rolleiflex T	\$ 49.50
Cat. No. 1533	16 Exposure Mask Set for Rolleiflex T	\$ 12.95

HONEYWELL PHOTOGRAPHIC PRODUCTS

ROLLEICORD Vb

the economy Rollei



The Rolleicord Vb is the most economical Rollei and features the most versatile format choice. Use of the optional exposure counter kits makes five different formats possible. Besides the standard 12-2 $\frac{1}{4}$ " by 2 $\frac{1}{4}$ " exposures; 16-1 $\frac{5}{8}$ " by 2 $\frac{1}{8}$ ", 16-1 $\frac{5}{8}$ " by 1 $\frac{5}{8}$ ", 24-1 $\frac{5}{8}$ " by 1 $\frac{5}{8}$ " or 24-1" by 1 $\frac{1}{2}$ " are possible. Parallax compensation and exposure counting are automatic for all formats.

Focusing is quick with the split image rangefinder wedge in the center of the Rolleiclear screen. The

focusing hood has a pop-up magnifier for quick focusing and quickly converts into a sports finder for following action.

Shutter speeds range from 1 second to 1/500 second plus B with X synchronization at all speeds. There is also a self-timer.

The Rolleicord Vb weighs 33 ounces and measures 5 $\frac{1}{2}$ " by 4" by 4".

Cat. No. 1005	Rolleicord Vb	\$199.50
Cat. No. 1006	Deluxe Eveready Case	\$ 29.50
Cat. No. 1535	16 Exposure Kit	\$ 18.95
Cat. No. 1536	24 Exposure Kit	\$ 18.95
Cat. No. 1542	Body release Rolleicord	\$ 1.50

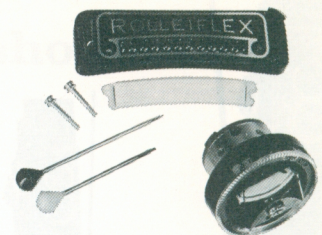
HONEYWELL PHOTOGRAPHIC PRODUCTS

TLR ACCESSORIES

EXPOSURE METER KIT For Rolleiflex T; Tele-Rolleiflex, 3.5E-2, E-3; 2.8E-2, E-3; and Wide Angle Rolleis

Pre-assembled parts are easily owner-installed. Film speed settings ASA 6 to 1600. Highly sensitive, shock resistant dual-range meter covers 18 Exposure Values from dimmest to brightest illumination. Includes camera name plate with assembled photocell plus range selection switch, light diffuser, and instructions.

- Cat. No. 1503 \$ 49.50
 Part No. 04689.00.1 Spare Diffuser for all Rolleiflex camera exposure meters .. \$ 2.20



EXPOSURE METER KIT

PROTECTIVE COVERS FOR EXPOSURE METERS

For Rolleiflex cases with removable front flap.
Case may be opened and/or front flap removed without detaching cover from case.

- Cat. No. 1558 Leather Cover \$ 4.00

For Rolleiflex Cases with non-removable front flap.

- Cat. No. 1557 Plastic Cap \$ 1.25

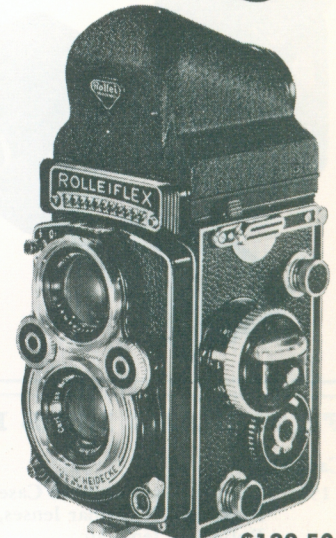
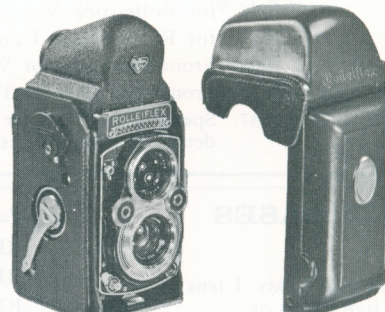


the Rollei Penta Prism

The Rollei Penta Prism facilitates viewing and focusing when it is desirable to photograph at eye-level. The Prism reproduces the viewfinder image on an upright plane, laterally correct. Following motion is easy and natural. The Pentaprism fits all 2 1/4" x 2 1/4" Rollei cameras with removable focusing hood; the Rolleiflex T; 3.5F, 2.8F, Tele, Wide-Angle, E2-3, Magic and Rolleicord Vb. The ocular hood gives complete protection against extraneous light for clear viewing under the most difficult conditions. Attaching and removing the Penta Prism is accomplished with the same simplicity as with the focusing hood. The Pentaprism weighs 14 1/2 ounces.

There is also a special front for the Eveready case to use with the Penta Prism. It fits all Rollei 2 1/4 by 2 1/4 camera cases with detachable front flaps except Tele and Wide Angle cases.

For photographers who wear glasses, the Penta B Eyepiece attachment makes focusing much easier.

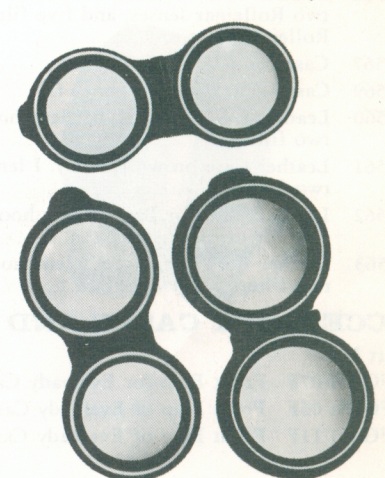


- Cat. No. 1500 Rollei Penta Prism with Leather Case \$129.50
 Cat. No. 1501 Penta B Eyepiece for Pentaprism & 45° Prism Finder for Rolleiflex SL 66 \$ 21.50
 Cat. No. 1037 Special Front for the Eveready Case \$ 22.50

Lens Caps

Cat. No.

- 1142 Chrome Lens Cap Bayonet size I for Rolleiflex T, Rolleicords and Rolleiflex 3.5 \$ 5.50
 1241 Satin Chrome Lens Cap Bayonet size II for Rolleiflex 3.5F, E-3 and Rolleimagics with 45mm lens center distance. \$ 5.50
 NOTE: Chrome Lens Cap for Rolleiflex 3.5E(2) with 42mm lens center distance is no longer available.
 1341 Satin Chrome Lens Cap Bayonet size III for the Rolleiflex 2.8F and Tele-Rolleiflex \$ 6.50
 1141 Black Plastic Lens Cap for Rolleicords and Rolleiflex T \$ 1.00
 1144 Black Plastic Lens Cap for 4x4 Rolleiflex \$ 1.00
 1242 Black Plastic Lens Cap for Rolleimagics \$ 2.00



HONEYWELL PHOTOGRAPHIC PRODUCTS

TLR ACCESSORIES



METAL CASES

This sturdy metal case encloses the camera for full protection in severe weather or other adverse conditions. With rubber-sealed closure edge, this air, dust, and water-tight case floats with the camera inside. It has a pivoted camera-holding bracket for quickly swinging the camera into shooting position and internal clips for two rolls of extra film or desiccant cartridges. For use with all Rolleis with grooved tripod base plate except Tele and Wide-Angle models. Weight without camera is about 23 oz. A desiccant cartridge is included. (For Rolleiflex 2.8 above No. 1,260,000; Rolleiflex 3.5 above No. 1,267,000; Rolleicord above No. 1,344,000; and Rolleiflex 4x4.)

Cat. No. 1516 Metal Case for 6x6 Rollei	\$59.50
Cat. No. 1517 Metal Case for 4x4 Rollei	\$59.50
Cat. No. 1518 Spare Desiccant Cartridge	\$ 2.00

EVEREADY CASES

Cat. No.		
1002	for Rolleiflex 2.8F/120-220 and 2.8F	\$36.50
1003	for Rolleiflex 2.8F/120-220 with compartment for flat glass	\$39.50
1023	for Rolleiflex 2.8F with compartment for flat glass	\$39.50
1036	for Rolleiflex 2.8E-3, 2.8E and E-2	\$39.50
1040	for Rolleiflex 2.8D, 2.8C	\$39.50
1016	for Rolleiflex 3.5F	\$36.50
1019	for Rolleiflex 3.5F with compartment for flat glass	\$39.50
1033	for Rolleiflex 3.5E-3, 3.5E and E-2	\$39.50
1042	for Rolleiflex 3.5 EV, X and MX	\$39.50
1028	for Wide-Angle Rolleiflex	\$42.50
1030	for Tele-Rolleiflex	\$44.50
1013	for Rolleiflex T	\$36.50
1017	for 4x4	\$29.50
1006	for Rolleicord Vb and Va	\$29.50
1045	for Rolleicord IV - III	\$29.50
1044	for Rolleicord V	\$29.50
1011	for Rollei-Magic I and II	\$29.50
1038	Front flap only for Wide-Angle case	\$22.50
1039	Front flap only for Tele case	\$24.50
1037	Special front flap for E/R cases for use with Penta Prism (For all detachable front cases except Wide-Angle and Tele)	\$22.50

FILTER AND LENS HOOD CASES

Cat. No.		
1564	Leather Compartment Case brown holds Bay. I lens hood, two Rolleinar lenses, and five filters or Rolleisoft lens, etc.	\$ 9.95
1565	Leather Compartment Case holds Bay. II lens hood, two Rolleinar lenses, and five filters or Rolleisoft lens, etc.	\$10.95
1566	Leather Compartment Case holds Bay. III lens hood, two Rolleinar lenses, and five filters or Rolleisoft lens, etc.	\$11.95
1567	Case for 6 filters Bayonet I	\$ 9.95
1569	Case for 6 filters Bayonet III	\$ 9.95
1560	Leather Case grey for 4x4 lens hood and two filters	\$ 6.95
1561	Leather Case brown for Bay. I lens hood and two filters	\$ 6.95
1562	Leather Case for Bay. II lens hood and two filters	\$ 6.95
1563	Leather Case for Bay. III lens hood and two filters	\$ 7.50

ACCESSORY CASES AND COMPONENTS

Part No.		
RFG961 07F	Front Flap for Eveready Case for 3.5F	\$13.20
RFG961 06F	Front Flap of Eveready Case for 2.8F	\$14.30
RFG961 11F	Front Flap of Eveready Case for T	\$13.20
RFG961 13F	Front Flap of Eveready Case for R'cord Vb	\$11.00
RFG961 08F	Front Flap of Eveready Case for R'magic	\$11.00
RFG131 049	Case for Rolleilux, Brown	\$ 3.85
RFG139 079	Case for Rollei 16 Flash Unit	\$ 0.77
RFG972 110	Case for Mutar 0.6 Rollei 16	\$ 8.80
RFG972 110	Case for Mutar 1.7 Rollei 16	\$ 8.80
RFG209 179	Case for Pentaprism	\$ 6.05
RFG972 040	Case for Rolleiflash 2, Rolleiflash Comb.	\$ 3.85
RFG130 009	Case for Filter Rollei 16 (Plastic) Size O	\$ 0.55
RFG131 009	Case for Filter and Rolleisoft Size I	\$ 1.32
RFG132 009	Case for Filter and Rolleisoft Size II	\$ 1.32
RFG133 009	Case for Filter and Rolleisoft Size III	\$ 1.32
RFG131 029	Case for Rolleipol Filter Size I	\$ 1.43
RFG132 029	Case for Rolleipol Filter Size II	\$ 1.43
RFG133 029	Case for Rolleipol Filter Size III	\$ 1.43
RFG131 019	Case for Rolleinar Set Size I	\$ 1.98
RFG132 019	Case for Rolleinar Set Size II	\$ 1.98
RFG133 019	Case for Rolleinar Set Size III	\$ 1.98
RFG139 089	Case for Rolleinar Set 0.35 and 0.7 Tele	\$ 0.88
RFG131 039	Case for Lenshood Size I	\$ 2.20
RFG132 039	Case for Lenshood Size II	\$ 2.20
RFG133 039	Case for Lenshood Size III	\$ 2.20

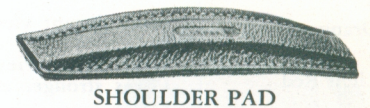
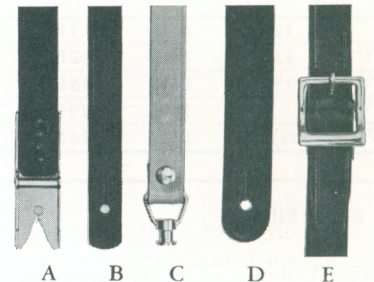
HONEYWELL PHOTOGRAPHIC PRODUCTS

TLR ACCESSORIES

neck and shoulder straps

Cat. No.

1545	A—Black Leather Neck Strap with quick action spring safety clips for latest model Rolleiflexes	\$ 8.50
1546	A—Same as above in brown leather	\$ 8.50
1547	Neck Strap Conversion Set. Converts previous Rolleiflex models to type A strap. Has parts and 1545 black strap	\$15.00
1548	B—Neck Strap, black, for Rolleicord	\$ 1.85
1549	C—Neck Strap, grey, for Rollei 4 x 4	\$ 5.50
1544	C—Neck Strap, brown, for Rollei 4x4	\$ 5.50
1551	Brown Neck Strap for Rollei-Magic	\$ 5.50
1553	D—Neck Strap, grey, for Metal Eveready Case, 4x4	\$ 3.00
1556	E—Brown Shoulder Strap for previous Rolleiflex and all Rolleicord Eveready cases	\$ 1.95
1555	Grey Shoulder Pad	\$ 1.95



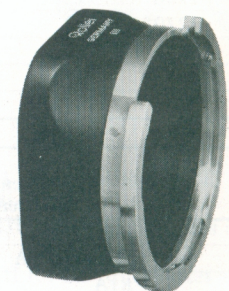
SHOULDER PAD

Lens Hoods

Lens hoods should be used at all times to protect the taking lens from extraneous light, and from the more obvious hazards of rain, snow, etc. The lens hood mounts on the outer bayonet of the taking lens, permitting use of Rollei lens accessories on the inner bayonet. The square front coincides with the square format. Case included.

Cat. No.

1101	Lens hood Bay. I for earlier 3.5 Rolleiflexes and all Rolleicords	\$11.50
1201	Lens hood Bay. II for Rolleiflex 3.5E-2 and 3, 3.5F and Rollei-Magics	\$12.50
1301	Lens hood Bay. III for 2.8 Rolleiflexes and Tele-Rolleiflex	\$14.50
1401	Lens hood Bay. IV for wide angle Rolleiflex	\$16.50



HONEYWELL PHOTOGRAPHIC PRODUCTS

TLR ACCESSORIES

filters

FOR BLACK AND WHITE FILMS

Rollei filters for black and white photography have a hard and durable anti-reflection coating. The exposure correction for each filter is engraved on the mount. These filters use a bayonet mount.

Bayonet Size	Light Yellow	Medium Yellow	Light Green	Green	Orange	Light Red	Light Blue	UV	Infra-red	Neutral Density 2X	Neutral Density 4X	
I	1109	1110	1111	1112	1113	1114	1116	1108	1115	1117	1118	\$13.00
II	1209	1210	1211	1212	1213	1214	1216	1208	1215	1217	1218	\$14.50
III	1309	1310	1311	1312	1313	1314	1316	1308	1315			\$17.00
IV		1410	1411	1412	1413	1414	1416	1408	1415	1417		\$24.00
V (Mutars)		1613	1614		1616	1617	1618	1611	1621	1619	1620	\$39.50

Rollei Filter	Use	Exposure Increase	Exposure Value Adjustment
Light Yellow Medium Yellow	Landscapes, snow, clouds. Renders yellow and green lighter, blue darker.	2x 3x	-1 -1.5
Light Green Green	Landscapes, snow, clouds. Renders green lighter, red (complexion) and blue darker. For panchromatic emulsions. Gives stronger effects than light green.	2x 3x	-1 -1.5
Orange	Hazy distant views. Renders yellow-red lighter, blue darker, distant objects clearer.	3-7x	-1.5 to -3
Light Red	Hazy distant views. Renders red lighter, blue-green darker. Gives stronger effects than Orange Filter.	4-10x	-2 to -3.5
Light Blue	Artificial light. Renders red darker. For ultra-pan emulsions.	1.5x	-0.5
UV	High altitudes above 6,000 feet. Seascapes. Eliminates ultra-violet rays which reduce contrast.	1.5x	-0.5
Infra-Red‡	Special filter for infra-red emulsions. Transmits dark red above 700m μ and infra-red.	*	*

‡ The infra-red filter features special compensation for focusing difference between visible and infra-red portion of the spectrum. Direct ground glass focusing may be employed with full assurance of sharp pictures.

* Exposure depends on type of emulsion used and must be determined by test.

FOR COLOR FILMS

These filters provide a simple method of balancing the temperature of the prevailing light to the color film. The R series are warming filters; the B series are cooling filters. Double bayonet mounts permit combining filters. A set of six filters with a case, R2, R5, R11, B2, B5 and B11, in Bayonet III to fit the 2.8 and Tele-Rolleis may be ordered as Cat. No. 1329.

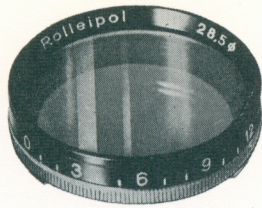
Cat. No. 1329 Color Conversion Filters with Case **\$ 89.00**

Size	H1	R1	R1.5	R2	R5	R11	B1	B2	B5	B11	
I	1120	1121	1119	1122	1123						\$16.50
II	1220		1219	1222		1224					\$18.50
III			1319	1322	1323	1324		1326	1327		\$19.00
IV		1421		1422	1423	1424	1425	1426	1427		\$28.00
Mutars V		1622						1627		1629	\$45.00

Rollei Filter	Wratten Equivalent	Exposure Correction Needed	Rollei Filter	Wratten Equivalent	Exposure Correction Needed
R1	81	0	B1	82	0
R1.5	Skylight 1A	0			
R2	81A	1/2 stop	B2		
R3 (1+2)	81B	1/2 stop	B3 (1+2)	82B	1/2 stop
R5	81EF	1/2 stop	B5		
R7 (5+2)	85C (approximately)	1 stop	B7 (5+2)	80C	1 1/2 stops
R11	85 (approximately)	1 stop	B11	80B (approximately)	1 1/2 stops
R13 (11+2)	85B	1 1/2 stops			

HONEYWELL PHOTOGRAPHIC PRODUCTS

TLR ACCESSORIES filters



ROLLEIPOL POLARIZING FILTER

For black & white or color, this filter is designed to eliminate or reduce reflections and glare from shiny, non-metallic objects and for filtering of blue sky. It is particularly useful in controlling sky tone in color pictures.

Effects may be predetermined by viewing the subject through the filter on the viewing lens and then transferring the filter to the taking lens in the same position. Exposure compensation is 1½ stops.

Cat. No. 1102	Rolleipol Bayonet I for earlier 3.5 Rolleiflexes, Rolleicords, 4x4's & SL 26	\$39.50
Cat. No. 1202	Rolleipol Bayonet II for Rolleiflex 3.5E, E-2, E-3, 3.5F and Rollei-Magics	\$42.50
Cat. No. 1302	Rolleipol Bayonet III for 2.8 Rolleiflexes and Tele-Rolleiflex	\$45.50
Cat. No. 1402	Rolleipol Bayonet IV for Wide-Angle Rolleiflex	\$47.50

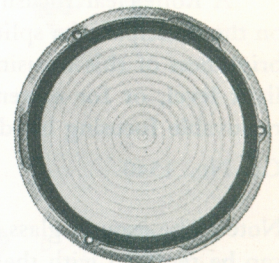
ROLLEISOFT DIFFUSING FILTERS

For softening of definition. Rolleisofts produce striking halo effects and are most effective for glamorizing portraits, particularly when making back-lighted pictures. Rolleisoft mounts permit the simultaneous use of Rolleinar lenses, filters and lens hood. They are anti-reflection coated. Case included.

The Rolleisoft O for weak soft-focus effect. Primarily for strong contrasts of bright, glittering objects and backlighted subjects.

The Rolleisoft I offers a greater soft-focus effect and is best suited for contrasty, highlighted subjects; portraiture.

Cat. No.		
1103	Rolleisoft O Bayonet I for earlier 3.5 Rolleiflexes, Rolleicords, 4x4's & SL 26	\$22.50
1104	Rolleisoft I Bayonet I for earlier 3.5 Rolleiflexes, Rolleicords, 4x4's & SL 26	\$22.50
1203	Rolleisoft O Bayonet II for Rolleiflex 3.5E, E-2, E-3, 3.5F and Rollei-Magics	\$24.50
1204	Rolleisoft I Bayonet II for Rolleiflex 3.5E, E-2, E-3, 3.5F and Rollei-Magics	\$24.50
1303	Rolleisoft O Bayonet III for 2.8 Rolleiflexes and Tele Rolleiflex	\$26.50
1304	Rolleisoft I Bayonet III for 2.8 Rolleiflexes and Tele Rolleiflex	\$26.50

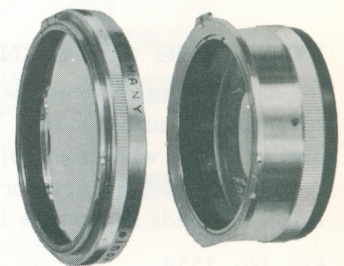


ROLLEINAR CLOSEUP LENSES

Each Rolleinar set consists of a parallax compensated viewing lens and a taking lens. Rolleinar lenses are coated and no exposure compensation is required. The bayonet mounting on the front permits using filters. Each set comes with instructions. Set 1 Rolleinars give an approximate subject area of 13" by 13". With the 80mm and 60mm lenses this means a working range from 18½" to 39½". With the 75mm lens it gives a working range from 17¾" to 39½". Set 2 Rolleinars are slightly stronger, covering an approximate subject area of 8" by 8". The working range for 80mm and 60mm lenses with Set 2 Rolleinars drops to 12½" to 19¾". With the 75mm lens it ranges from 19¾" to 12½". The Set 3 Rolleinars are the strongest with an approximate subject area of 6" by 6". Set 3 Rolleinars give 80mm, 75mm and 60mm lenses a working range between 13" and 9⅞".

There are also three special Rolleinar sets. The Rolleinar 0.35 gives the Tele-Rolleiflex a close-up range from 9'2" to 4'5". The Rolleinar 0.7 gives the Tele-Rolleiflex a close-up range between 4'6½" and 3'½". The Tele-Rolleiflex can also use the Rolleinar Sets 1 and 2 Bayonet III. The Wide-Angle Rolleiflex has a special Rolleinar set that extends its focusing range down to 9½".

Cat. No.		Cat. No.	
1105	Rolleinar Set 1 Bayonet I for Earlier Rolleiflexes, all Rolleicords, and 4x4. \$29.50	1207	Rolleinar Set 3 Bayonet II for Rolleiflexes 3.5E, E-2, E-3, 3.5F and Rollei-Magics \$36.50
1106	Rolleinar Set 2 Bayonet I for Earlier 3.5 Rolleiflexes, all Rolleicords, and 4x4 \$29.50	1305	Rolleinar Set 1 Bayonet III for 2.8 Rolleiflexes and Tele-Rolleiflex \$37.50
1107	Rolleinar Set 3 Bayonet I for Earlier 3.5 Rolleiflexes, all Rolleicords, and 4x4 \$32.50	1306	Rolleinar Set 2 Bayonet III for 2.8 Rolleiflexes and Tele-Rolleiflex \$37.50
1205	Rolleinar Set 1 Bayonet II for Rolleiflexes 3.5F, E-2, E-3, 3.5F and Rollei-Magics \$34.50	1307	Rolleinar Set 3 Bayonet III for 2.8 Rolleiflexes \$40.00
1206	Rolleinar Set 2 Bayonet II for Rolleiflexes 3.5E, E-2, E-3, 3.5F and Rollei-Magics \$34.50	1332	Rolleinar 0.35 for Tele-Rolleiflex \$59.50
		1333	Rolleinar 0.7 for Tele-Rolleiflex \$55.00
		1406	Rolleinar Set 2 for Wide-Angle Rolleiflex \$64.50



HONEYWELL PHOTOGRAPHIC PRODUCTS

TLR ACCESSORIES

filters

FOR BLACK AND WHITE FILMS

Rollei filters for black and white photography have a hard and durable anti-reflection coating. The exposure correction for each filter is engraved on the mount. These filters use a bayonet mount.

Bayonet Size	Light Yellow	Medium Yellow	Light Green	Green	Orange	Light Red	Light Blue	UV	Infra-red	Neutral Density 2X	Neutral Density 4X	
I	1109	1110	1111	1112	1113	1114	1116	1108	1115	1117	1118	\$13.00
II	1209	1210	1211	1212	1213	1214	1216	1208	1215	1217	1218	\$14.50
III	1309	1310	1311	1312	1313	1314	1316	1308	1315			\$17.00
IV		1410	1411	1412	1413	1414	1416	1408	1415	1417		\$24.00
V (Mutars)		1613	1614		1616	1617	1618	1611	1621	1619	1620	\$39.50

Rollei Filter	Use	Exposure Increase	Exposure Value Adjustment
Light Yellow Medium Yellow	Landscapes, snow, clouds. Renders yellow and green lighter, blue darker.	2x 3x	-1 -1.5
Light Green Green	Landscapes, snow, clouds. Renders green lighter, red (complexion) and blue darker. For panchromatic emulsions. Gives stronger effects than light green.	2x 3x	-1 -1.5
Orange	Hazy distant views. Renders yellow-red lighter, blue darker, distant objects clearer.	3-7x	-1.5 to -3
Light Red	Hazy distant views. Renders red lighter, blue-green darker. Gives stronger effects than Orange Filter.	4-10x	-2 to -3.5
Light Blue	Artificial light. Renders red darker. For ultra-pan emulsions.	1.5x	-0.5
UV	High altitudes above 6,000 feet. Seascapes. Eliminates ultra-violet rays which reduce contrast.	1.5x	-0.5
Infra-Red‡	Special filter for infra-red emulsions. Transmits dark red above 700m μ and infra-red.	*	*

‡ The infra-red filter features special compensation for focusing difference between visible and infra-red portion of the spectrum. Direct ground glass focusing may be employed with full assurance of sharp pictures.

* Exposure depends on type of emulsion used and must be determined by test.

FOR COLOR FILMS

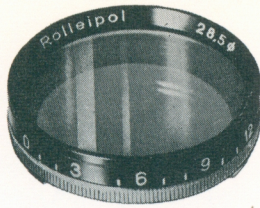
These filters provide a simple method of balancing the temperature of the prevailing light to the color film. The R series are warming filters; the B series are cooling filters. Double bayonet mounts permit combining filters. A set of six filters with a case, R2, R5, R11, B2, B5 and B11, in Bayonet III to fit the 2.8 and Tele-Rolleis may be ordered as Cat. No. 1329.

Cat. No. 1329 Color Conversion Filters with Case **\$ 89.00**

Size	H1	R1	R1.5	R2	R5	R11	B1	B2	B5	B11	
I	1120	1121	1119	1122	1123						\$16.50
II	1220		1219	1222		1224					\$18.50
III			1319	1322	1323	1324		1326	1327		\$19.00
IV		1421		1422	1423	1424	1425	1426	1427		\$28.00
Mutars V		1622						1627		1629	\$45.00

Rollei Filter	Wratten Equivalent	Exposure Correction Needed	Rollei Filter	Wratten Equivalent	Exposure Correction Needed
R1	81	0	B1	82	0
R1.5	Skylight 1A	0			
R2	81A	1/2 stop	B2		
R3 (1+2)	81B	1/2 stop	B3 (1+2)	82B	1/2 stop
R5	81EF	1/2 stop	B5		
R7 (5+2)	85C (approximately)	1 stop	B7 (5+2)	80C	1 1/2 stops
R11	85 (approximately)	1 stop	B11	80B (approximately)	1 1/2 stops
R13 (11+2)	85B	1 1/2 stops			

HONEYWELL PHOTOGRAPHIC PRODUCTS



TLR ACCESSORIES

filters

ROLLEIPOL POLARIZING FILTER

For black & white or color, this filter is designed to eliminate or reduce reflections and glare from shiny, non-metallic objects and for filtering of blue sky. It is particularly useful in controlling sky tone in color pictures.

Effects may be predetermined by viewing the subject through the filter on the viewing lens and then transferring the filter to the taking lens in the same position. Exposure compensation is 1½ stops.

Cat. No. 1102	Rolleipol Bayonet I for earlier 3.5 Rolleiflexes, Rolleicords, 4x4's & SL 26	\$39.50
Cat. No. 1202	Rolleipol Bayonet II for Rolleiflex 3.5E, E-2, E-3, 3.5F and Rollei-Magics	\$42.50
Cat. No. 1302	Rolleipol Bayonet III for 2.8 Rolleiflexes and Tele-Rolleiflex	\$45.50
Cat. No. 1402	Rolleipol Bayonet IV for Wide-Angle Rolleiflex	\$47.50

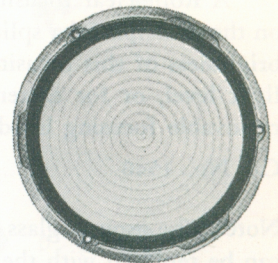
ROLLEISOFT DIFFUSING FILTERS

For softening of definition. Rolleisofts produce striking halo effects and are most effective for glamorizing portraits, particularly when making back-lighted pictures. Rolleisoft mounts permit the simultaneous use of Rolleinar lenses, filters and lens hood. They are anti-reflection coated. Case included.

The Rolleisoft O for weak soft-focus effect. Primarily for strong contrasts of bright, glittering objects and backlighted subjects.

The Rolleisoft I offers a greater soft-focus effect and is best suited for contrasty, highlighted subjects; portraiture.

Cat. No.		
1103	Rolleisoft O Bayonet I for earlier 3.5 Rolleiflexes, Rolleicords, 4x4's & SL 26	\$22.50
1104	Rolleisoft I Bayonet I for earlier 3.5 Rolleiflexes, Rolleicords, 4x4's & SL 26	\$22.50
1203	Rolleisoft O Bayonet II for Rolleiflex 3.5E, E-2, E-3, 3.5F and Rollei-Magics	\$24.50
1204	Rolleisoft I Bayonet II for Rolleiflex 3.5E, E-2, E-3, 3.5F and Rollei-Magics	\$24.50
1303	Rolleisoft O Bayonet III for 2.8 Rolleiflexes and Tele Rolleiflex	\$26.50
1304	Rolleisoft I Bayonet III for 2.8 Rolleiflexes and Tele Rolleiflex	\$26.50

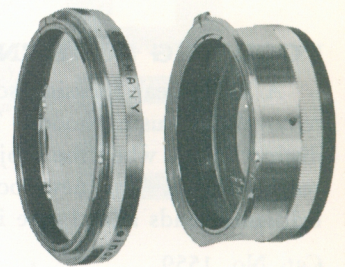


ROLLEINAR CLOSEUP LENSES

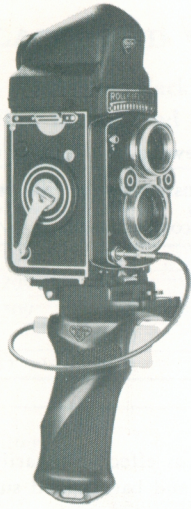
Each Rolleinar set consists of a parallax compensated viewing lens and a taking lens. Rolleinar lenses are coated and no exposure compensation is required. The bayonet mounting on the front permits using filters. Each set comes with instructions. Set 1 Rolleinars give an approximate subject area of 13" by 13". With the 80mm and 60mm lenses this means a working range from 18½" to 39½". With the 75mm lens it gives a working range from 17¾" to 39½". Set 2 Rolleinars are slightly stronger, covering an approximate subject area of 8" by 8". The working range for 80mm and 60mm lenses with Set 2 Rolleinars drops to 12½" to 19¾". With the 75mm lens it ranges from 19¾" to 12½". The Set 3 Rolleinars are the strongest with an approximate subject area of 6" by 6". Set 3 Rolleinars give 80mm, 75mm and 60mm lenses a working range between 13" and 9⅞".

There are also three special Rolleinar sets. The Rolleinar 0.35 gives the Tele-Rolleiflex a close-up range from 9'2" to 4'5". The Rolleinar 0.7 gives the Tele-Rolleiflex a close-up range between 4'6½" and 3'½". The Tele-Rolleiflex can also use the Rolleinar Sets 1 and 2 Bayonet III. The Wide-Angle Rolleiflex has a special Rolleinar set that extends its focusing range down to 9½".

Cat. No.		Cat. No.	
1105	Rolleinar Set 1 Bayonet I for Earlier Rolleiflexes, all Rolleicords, and 4x4.	1207	Rolleinar Set 3 Bayonet II for Rolleiflexes 3.5E, E-2, E-3, 3.5F and Rollei-Magics
	\$29.50		\$36.50
1106	Rolleinar Set 2 Bayonet I for Earlier 3.5 Rolleiflexes, all Rolleicords, and 4x4	1305	Rolleinar Set 1 Bayonet III for 2.8 Rolleiflexes and Tele-Rolleiflex
	\$29.50		\$37.50
1107	Rolleinar Set 3 Bayonet I for Earlier 3.5 Rolleiflexes, all Rolleicords, and 4x4	1306	Rolleinar Set 2 Bayonet III for 2.8 Rolleiflexes and Tele-Rolleiflex
	\$32.50		\$37.50
1205	Rolleinar Set 1 Bayonet II for Rolleiflexes 3.5F, E-2, E-3, 3.5F and Rollei-Magics	1307	Rolleinar Set 3 Bayonet III for 2.8 Rolleiflexes
	\$34.50		\$40.00
1206	Rolleinar Set 2 Bayonet II for Rolleiflexes 3.5E, E-2, E-3, 3.5F and Rollei-Magics	1332	Rolleinar 0.35 for Tele-Rolleiflex
	\$34.50		\$59.50
		1333	Rolleinar 0.7 for Tele-Rolleiflex
			\$55.00
		1406	Rolleinar Set 2 for Wide-Angle Rolleiflex
			\$64.50



TLR ACCESSORIES



PISTOL GRIP

This sturdy, lightweight support is shaped to fit the right hand. Designed primarily for eye-level shooting, it also permits steady shooting at waist or chest level. The grip has a Rolleiflex clamp-mount, shoulder ledge for mounting standard flash bracket, smooth trigger, trigger safety lock, and adjustable cable release for selective trigger travel. Fits all Rolleis with grooved edge on tripod base plate; Rolleiflex 2.8 above No. 1,260,000, Rolleiflex 3.5 above No. 1,267,000, Rolleicord above No. 1,344,000, Tele-Rollei, Wide-Angle Rollei, Rolleiflex 4x4, and Rollei-Magics.

Cat. No. 1502 Pistol Grip	\$28.50
Cat. No. 1528 Wrist Strap for grip	\$ 3.95
Part No. 94077.00.2 Spare Cable Release for Pistol Grip	\$ 3.30

FOCUSING SCREENS WITH RANGEFINDER WEDGE

A Rolleiclear focusing screen with a 5mm diameter rangefinder wedge in the center of the field is available. Operating on the principal of a split-image rangefinder, the broken image outlines match when the camera is critically focused. The extra brightness of this focusing aid with its clear image area is particularly valuable for defining maximum screen sharpness in low light level, or for extremely fast focusing. The screen may be installed by Rollei owners who have cameras fitted with removable focusing hoods.

Cat No. 1540	\$12.95
--------------------	----------------

Note: The ground glass focusing screen of all 2¼x2¼ Rolleis from the Rolleiflex Old Standard (1932) through recent models can be replaced with the Rolleiclear. Screens are supplied in sizes to fit specific former model 2¼x2¼ Rolleis and must be installed by a factory authorized service shop where correct collimating of the viewing lens image can be precisely matched to that of the taking lens.

Installation and refocusing	\$ 8.50
-----------------------------------	----------------

FOCUSING SCREENS WITH CENTRAL MICRO PRISM GRID

A Rolleiclear focusing screen with a central micro prism grid is now available to fit all Rollei twin lens reflex cameras with removable focusing hoods. The grid — 5/8" diameter — consists of several thousand micro prisms which form a clear and distinct image when the subject is in critical focus. The image immediately appears blurred when the prime subject is not correctly focused. This new focusing aid is well suited to action photography with its increased speed of operation. Greater image brilliance lends added ease in focusing under poor lighting conditions.

Cat. No. 1559	\$14.95
---------------------	----------------

SPECIAL FLAT GLASS ATTACHMENT

This attachment consists of two items: a glass plate, and a special back. Specially coated, the optically-flat glass makes for extreme plate-like flatness of the film when the most critical results are required. Easily installed, the glass plate's beveled edges at top and bottom are held by retaining bars in the film gate. The special back has a three-position film pressure plate with two different positions for 2¼ x 2¼. The Rolleikin 35mm attachment may also be used with the special back, but without glass. For use with 2.8F, 2.8E-3, 2.8E-2, 3.5E-3, above No. 2,230,000 to 2,451,849 and 3.5F models below 2,815,030, also Wide Angle Rolleis and most Tele Rolleis.

Cat. No. 1513	\$59.50
Cat. No. 1514 Spare Flat Glass	\$15.00

HONEYWELL PHOTOGRAPHIC PRODUCTS

TLR ACCESSORIES

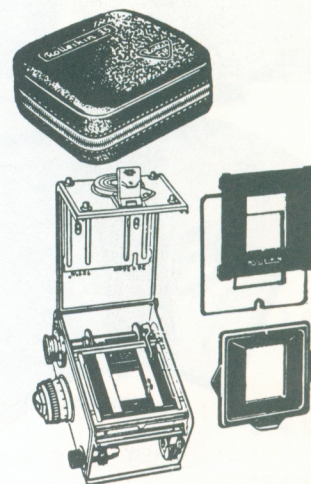
Rolleikin 35mm Adapter

The Rolleikin Adapter permits use of 35mm film in all 2¼x2¼ Rolleis, except Rollei-Magics. Rolleikin 2 is for Rolleiflex 2¼x2¼ cameras above No. 1,100,000 (except R'flex T below No. 2,151,000) and Rolleicord cameras above No. 1,137,000. If cameras in this series are not already equipped with an adjustable pressure plate, a combination back must be ordered additionally for use with the Rolleikin 2. The Rolleikin adapts the Rollei to 35mm film cartridges of 12, 20 or 36 exposures.

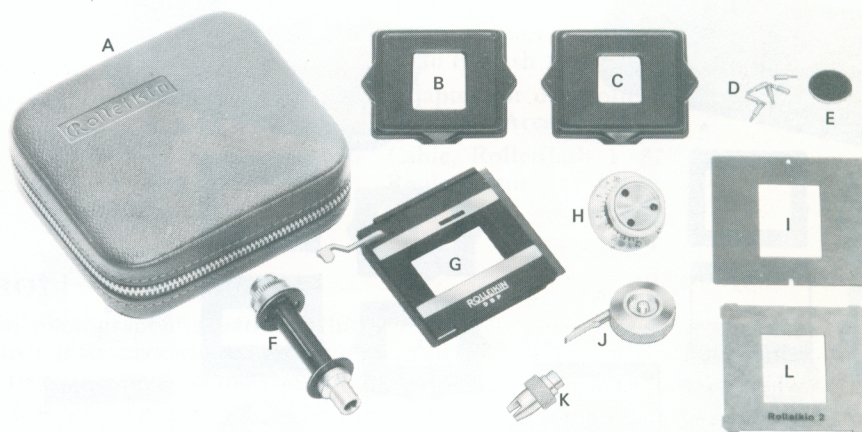
Cat. No. 1530 **\$ 57.50**

Rolleikin 2.8, for 2.8 C, D, E only and Tele-Rollei below No. 2,305,001; less Exposure Counter Knob.

Cat. No. 1531 **\$ 47.50**



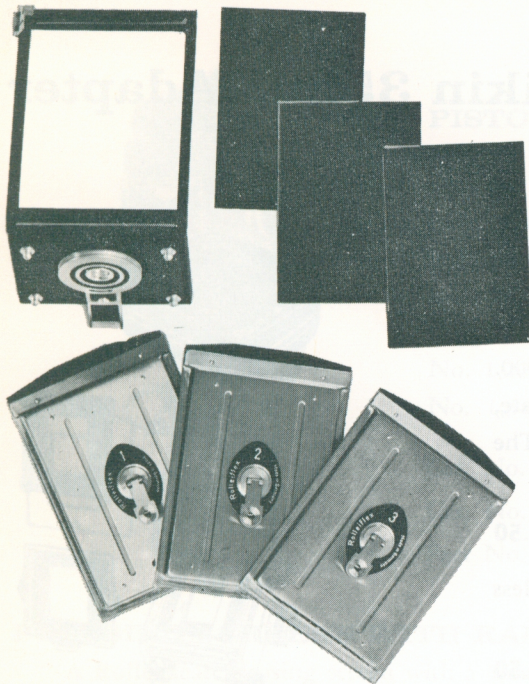
ROLLEIKIN COMPONENTS



(A) RFG139.069	Case for Rolleikin	\$ 7.26	(F) 92050.04.0	Take Up Spool	\$ 6.60
(B) 92050.06.0	Direct Viewfinder Mask 3.5/2.8	\$ 1.38	(G) 92050.01.0	Film Guide Frame	\$22.00
(C) 92050.26.0	Direct Viewfinder Mask Tele	\$ 2.27	(H) 92050.02.3	Exposure Counter Knob	\$13.20
(D) 02066.82.0	Coarse thread screw	\$ 0.17	(I) 92121.00.0	Focusing Mask F	\$ 0.66
01121.82.0	Fine thread screw	\$ 0.17	(J) 92050.05.0	Spool Knob	\$ 1.76
(E) 92050.03.1	Leather Disc	\$ 0.22	(K) 90986.00.0	Extension Spindle	\$ 1.10
			(L) 92051.00.0	Focusing Mask E	\$ 0.66

HONEYWELL PHOTOGRAPHIC PRODUCTS

TLR ACCESSORIES



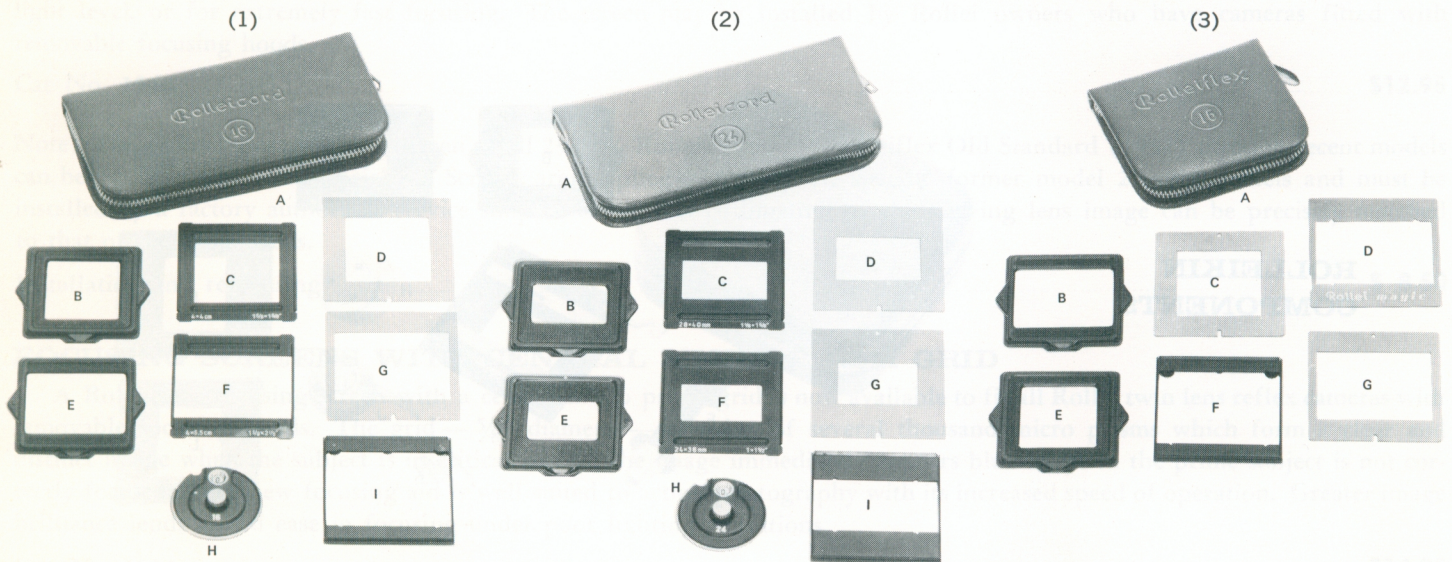
CUT FILM ADAPTER KIT

Designed for use with 2¼x2¼ Rolleis where single exposures or the use of special negative and positive materials in color and black and white are desired, or immediate, individual processing is called for. Optional is a direct focusing screen that permits critical focusing with the taking lens where exact, complete use of the picture format is required. For use with Rolleiflex and Rolleicord models, except 4x4 and Rollei-Magic I and II. Includes adapter back and 3 special film holders with 3 cut-film sheaths. Film size required is 2½ by 3½.

Cat. No.

1519	Cut Film Adapter Kit.....	\$89.50
1522	Adapter, back only for 2¼x2¼ Rolleis.....	\$29.50
1529	Cut Film/Plate Holder.....	\$20.00
1520	Direct Focusing Screen, 2¼x2¼.....	\$18.50
1523	Cut-film Sheath.....	\$.90
1521	Leather Case, for 2 Rollei Cut-film (or plate) holders.....	\$ 5.95

EXPOSURE AND FORMAT ADAPTERS & COMPONENTS



(1) ROLLEICORD Va + Vb 16-EXPOSURE KIT

	Cat. No. 1535 Complete.....	\$18.95
(A)	RFG139 029 Case 16-Exp. Kit.....	\$ 3.30
(B)	91200.04.0 Direct Viewfinder Mask 1⅞x1⅞ (Superslide).....	\$ 1.38
(C)	91224.00.0 Focusing Mask 1⅞x1⅞ Va (Superslide).....	\$ 1.10
(D)	91214.00.0 Focusing Mask 1⅞x1⅞ Vb (Superslide).....	\$ 0.55
(E)	91200.03.0 Direct Viewfinder Mask 1⅞x2⅞.....	\$ 1.38
(F)	91225.00.0 Focusing Mask 1⅞x2⅞ Va.....	\$ 1.10
(G)	91215.00.0 Focusing Mask 1⅞x2⅞ Vb.....	\$ 0.55
(H)	91220.41.1 16-Exposure Counter.....	\$ 6.60
(I)	91200.01.0 16-Exposure Frame Va and Vb.....	\$ 1.65

(2) ROLLEICORD Va + Vb 24-EXPOSURE KIT

	Cat. No. 1536 Complete.....	\$18.95
(A)	RFG139 049 Case 24-Exp. Kit.....	\$ 3.30
(B)	91200.05.0 Direct Viewfinder Mask 1⅞x1⅞ (Bantam).....	\$ 1.38
(C)	91212.00.0 Focusing Mask 1⅞x1⅞ Va (Bantam).....	\$ 1.10
(D)	91262.00.0 Focusing Mask 1⅞x1⅞ Vb (Bantam).....	\$ 0.55

(E)	91200.06.0 Direct Viewfinder Mask 1x1½.....	\$ 1.38
(F)	91213.00.0 Focusing Mask 1x1½ Va.....	\$ 1.10
(G)	91264.00.0 Focusing Mask 1x1½ Vb.....	\$ 0.55
(H)	91230.41.1 24-Exposure Counter.....	\$ 6.60
(I)	91200.07.1 24-Exposure Frame Va, Vb.....	\$ 1.65

(3) ROLLEI-MAGIC I, II AND ROLLEIFLEX T 16-EXPOSURE KIT

	Cat. No. 1533 Complete.....	\$12.95
(A)	RFG139 059 Case 16-Exp. Kit Magic I, II + T.....	\$ 3.30
(B)	91200.03.0 Direct Viewfinder Mask 1⅞x2⅞.....	\$ 1.38
(C)	91214.00.0 Focusing Mask 1⅞x1⅞ (Superslide).....	\$ 0.55
(D)	91200.08.0 Focusing Mask, Magic I, II.....	\$ 1.65
(E)	91200.04.0 Direct Viewfinder Mask 1⅞x1⅞ (Superslide).....	\$ 1.38
(F)	91200.08.0 16-Exposure Frame T.....	\$ 1.65
(G)	91215.00.0 Focusing Mask 1⅞x2⅞.....	\$ 0.55

HONEYWELL PHOTOGRAPHIC PRODUCTS

TLR ACCESSORIES

ROLLEIFLASH 2

The Rolleiflash 2 reflector is adjustable for normal or long shot illumination. This gives stronger coverage with the Tele-Rolleiflex or with reduced format sizes. The brightly pebbled surface delivers a very even illumination. The universal socket accepts 3 flash bulb types: Standard Midget, No. 5, etc.; Subminiature, M-2, M-5, etc. and European all-glass base, XM 1, XM5 Z, etc. The Rolleiflash 2 has a built-in test lamp, an open flash firing button with a lock, self locking twin flash cord sockets, a lamp ejector and an f/stop calculator that automatically indicates the f/stop needed for any distance, guide number and reflector position combination. The arm bracket swings and locks, detaches and folds. Using right angle self locking tips, the 12" coiled cord extends to 40" when needed. The Rolleiflash 2 also comes with zippered carrying case. Accessories include a connector block for two cords with twin self locking sockets, extension units, extra length cords and cables plus extra brackets.



Cat. No.		
1671	Bayonet I for earlier 3.5 Rolleiflexes, Rolleicords & 4x4's	\$46.50
1672	Bayonet II for Rolleiflexes 3.5 E, E-2, E-3, 3.5F and Rollei-Magics	\$46.50
1673	Bayonet III for 2.8 Rolleiflexes and Tele-Rolleiflex	\$46.50
1674	Bayonet IV for Wide-Angle R'flex	\$46.50
1680	Rolleiflash M, with case for Rollei-Magic	\$29.50
1681	Rolleiflash Comb. 2, Extension Flash unit with 10' cord, incl. case	\$29.50
1685	Connector block for coupling 2 cords	\$ 5.50
1682	Cord, 10' extension, with right angle tips	\$ 3.95
1684	Cord, 32" non-coiled, with right angle tips	\$ 2.50

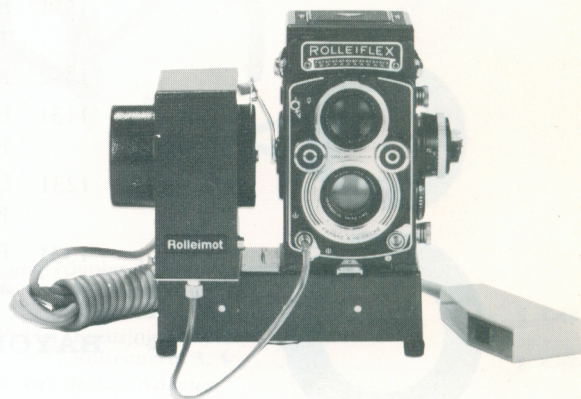
Cat. No.		
1683	Coiled Cord, 12/40" replacement, with right angle tips	\$ 3.95

BRACKET ONLY FOR ROLLEIFLASH 2

1676	Bayonet I for earlier 3.5 Rolleiflexes, Rolleicords & 4x4's	\$14.50
1677	Bayonet II for Rolleiflexes 3.5 E, E-2, E-3, 3.5F and Rollei-Magics	\$14.50
1678	Bayonet III for 2.8 Rolleiflexes and Tele-Rolleiflex	\$14.50
1679	Bayonet IV for Wide-Angle R'flex	\$14.50
1689	10 ft. connector cord from R'Flash 1 to R'Flash 2	\$ 3.50
1688	Adapter for use Rolleiflash 1 or 2 in 35mm Accessory Clip	\$ 1.50
1686	Cable, Rolleiflash 1 32" Replacement	\$ 2.00

ROLLEIMOT ELECTRIC REMOTE CONTROL

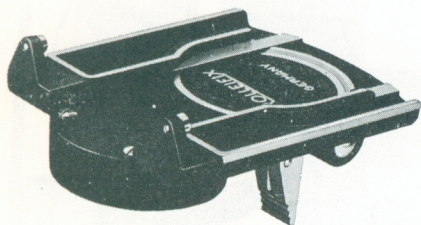
The Rolleimot is particularly valuable in photographic situations which require the photographer to be at a distance from his camera, such as unobtrusive feature photography, technical recording work in inaccessible or dangerous places, and wildlife pictures. Designed for use with the 2 1/4 x 2 1/4 SL66, Rolleiflex and Rollei-Magic models, the Rolleimot can be operated at distances up to 650 feet by means of the remote cable and switching control. With the battery-powered (4 size "D" Alkaline cells) Rolleimot the photographer can advance the film and release the shutter through a complete roll of film by remote control. A warning light indicates when the camera is ready for the next exposure and signals the end of film. Works perfectly for electronic flash shots on camera, or extension located off camera. Complete with adapter plate and dual arms to fit 2 1/4 SLR & TLR cameras.



Cat. No.		
1592	Rolleimot for SL66 & 2 1/4 TLR Cameras	\$289.95
1526	Case	\$ 22.50
1721	33' Extension	\$ 9.50
1527	Extension Cable for greater length, special order, per meter	\$.60

HONEYWELL PHOTOGRAPHIC PRODUCTS

TLR ACCESSORIES

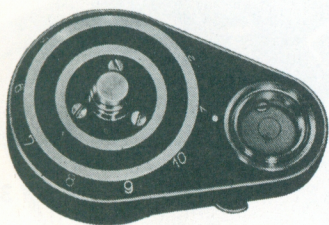


ROLLEIFLEX-TRIPOD HEAD

ROLLEIFIX TRIPOD HEAD

Mounted on a tripod, attached to a flashgun or Panorama Head, the Rolleiflex provides for quick fastening or removal of the camera. It permits successive rolls of film to be exposed of the same fixed subject by a tripod-mounted camera without disturbing the original camera-subject orientation. Fits all Rollei cameras with grooved edge on tripod base plate; Rolleiflex 2.8 above No. 1,260,000, Rolleiflex 3.5 above No. 1,267,000, Rolleicord above No. 1,344,000, Tele-Rolleiflex, Wide-Angle Rollei, Rolleiflex 4x4, and Rollei-Magics.

Cat. No. 1506 \$ 12.95

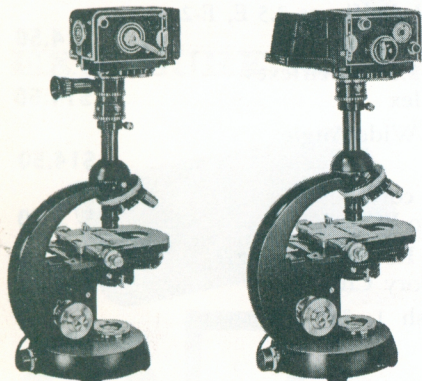


PANORAMA HEAD

PANORAMA HEAD

Especially designed for taking panoramic views with a tripod-mounted Rolleiflex or Rolleicord. The head is divided into 10 sections, making a complete circle of 360°. Each picture has a small overlap for mounting into a perfect panoramic scene. A sensitive spirit level is built in for exact horizontal alignment.

Cat. No. 1507 \$ 19.95



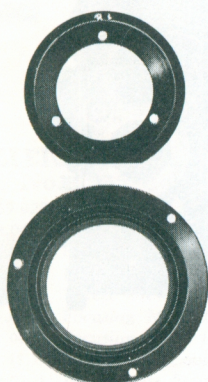
LEFT—ROLLEI W/MICRO TUBE + PRISM
RIGHT—WITH MICRO TUBE ONLY

ROLLEI MICRO ATTACHMENT

For use of the microscope with the Rollei. Combining the precision of both, the Micro Attachment is universally applicable within the complete range of photomicrography. Permits utilization of the complete circular picture area in both Rollei sizes 6x6cm and 4x4cm. The Micro Attachment is composed of two parts. The Micro Tube is for attaching to a standard 25mm microscope ocular. Used alone, it permits micro-pictures of non-moving objects. The camera is attached alternately by viewing lens and taking lens for focus and exposure by means of bayonet ring. Bayonet Rings are available individually for using different model Rollei cameras with the same Micro Tube. The Micro Prism is used with the Micro Tube. It covers all possibilities of photomicrography, including living specimens. The prism mounts directly on taking lens, permitting constant control of picture field, even during exposure, by means of a focusing ocular. (With Bayonet Ring I 6x6 only. In use, it requires switching bayonet rings of Tube and Prism if tube is not Bayonet I 6x6). Prism has adjustable ocular for individual eye-sight.

Cat. No.

- | | | |
|------|---|----------|
| 1509 | Bayonet I Micro Tube for earlier 3.5 Rolleiflexes, Rolleiflex T, 4x4 and all Rolleicords | \$ 22.50 |
| 1510 | Bayonet II Micro Tube for Rolleiflexes 3.5E, E-2, E-3, 3.5F and Rollei-Magics | \$ 22.50 |
| 1511 | Bayonet III Micro Tube for 2.8 Rolleiflexes and Tele-Rolleiflex | \$ 22.50 |
| 1512 | Rollei Micro Prism | \$150.00 |
| 1131 | Bayonet I Spare Bayonet Ring for earlier 3.5 Rolleiflexes, Rolleiflex T, all Rolleicords and Rollei 4x4 | \$ 3.95 |
| 1231 | Bayonet II Spare Bayonet Ring for Rolleiflexes 3.5E, E-2, E-3, 3.5F and Rollei-Magics | \$ 3.95 |
| 1331 | Bayonet III Spare Bayonet Ring for 2.8 Rolleiflexes and Tele-Rolleiflex | \$ 3.95 |



PAIR BAYONET FITTINGS I

BAYONET FITTINGS FOR ROLLEI TLR MUTAR LENSES

Cat. No.

- | | | | |
|-------|------------------------------|----------|-----------|
| 1607 | Size I | [404-33] | } \$ 7.50 |
| 1608 | Size II (42mm spacing) | [404-33] | |
| *1609 | Size III, 0.7x | [414-33] | |
| *1610 | Size III, 1.5x | [394-33] | |

*As engraved on the rings, the Mutar 1.5x and 0.7x units require different versions of the bayonet fitting rings in Bayonet Size III. The rings in the other sizes fit both Mutar units.

See page 18 for Rollei Mutar filters.

HONEYWELL PHOTOGRAPHIC PRODUCTS

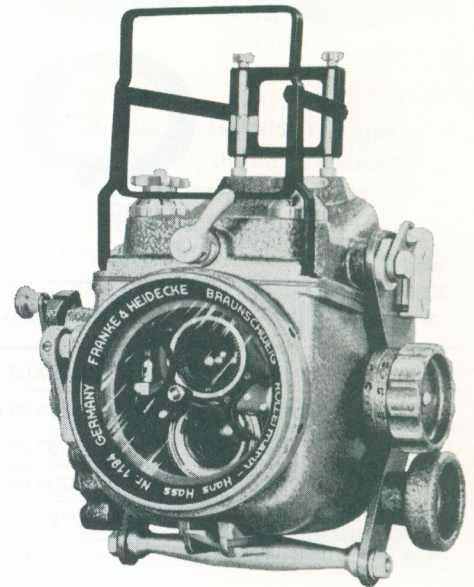
TLR ACCESSORIES

ROLLEIMARIN IV

The Rolleimarin housing permits underwater operation of the Rolleiflex 3.5F at depths down to 300 feet. With the camera inside, the unit weighs only 3 pounds underwater for maximum handling ease. The all-metal housing is corrosion resistant and sea-green in color. It has an angled viewing magnifier for focusing and a supplementary parallax compensating open frame viewfinder on top. Shutter and speed selection, focusing, film advancing and flash photography are all easily accomplished underwater. The Rolleimarin comes with control coupling turret, focusing knob coupler and meter storage case.

Accessories include heavy reinforced sail cloth canvas cases with internal blocking for protection and easy carrying. The canvas cases for the flash attachment have an inside pocket for the battery pack. Flash accessories include the Flash Unit 2 which equips the Rolleimarin 4 for flash on the left side (focusing knob side). It includes a flash arm with a three-position tilt-head, reflector, BC battery pack 4 and a set of two canvas cases. Flash Unit 1 equips the Rolleimarin 1, 2 and 3 for flash, also on the left side. It has a flash arm with a fixed head, reflector, BC Battery Pack and a set of two canvas cases. The Extension Flash permits simultaneous firing of two bulbs, one at each side. It has a dual plug, reversed mounting foot and accessory shoe with screws for mounting on the right side of the Rolleimarin. Housings numbered 1586 and on up are already fitted with the required threaded holes. A battery pack is not required. The Extension Flash includes the right flash arm with tilt head, reflector, mounting shoe with two screws and a set of two cases.

Cat. No. 1854 Rolleimarin 4 (for Rolleiflex 3.5F above No. 2,250,000 only). Includes control coupling turret, focusing knob coupler, open frame finder, and meter storage case **\$600.00**

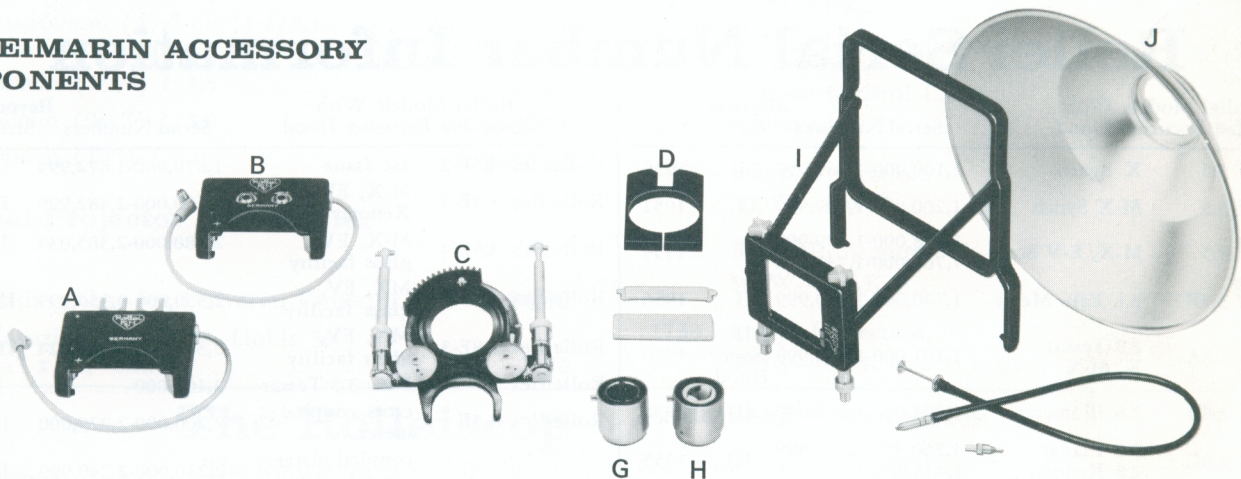


ROLLEIMARIN ACCESSORIES

Cat. No.	
1857	Rolleinar Set 1, 49"-24" for Rolleimarin 4 \$25.00
1858	Rolleinar Set 2, 24"-16" for Rolleimarin 4 \$25.00
1859	Filter Discs, set of 3, 37mm for Rolleimarin 4. Lt. Yellow, Med. Yellow, Orange, in Leather Case \$22.50
1855	Canvas Case for Rolleimarin Housing \$49.50

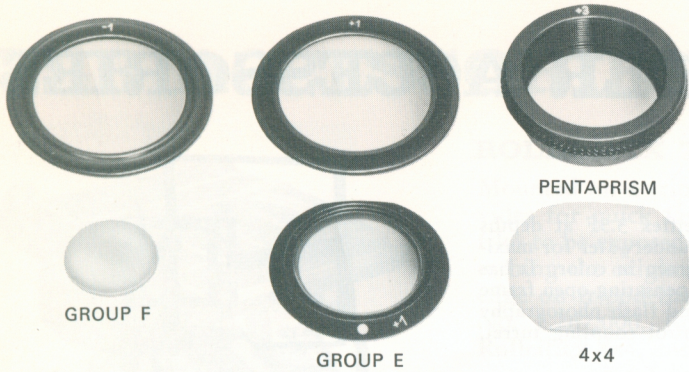
Cat. No.	
1883	Canvas Case. Set of two for flash attachment (Replacement) \$32.50
1863	Flash Unit 2 \$99.50
1865	Flash Unit 1 \$77.50
1882	Extension Flash \$89.50

ROLLEIMARIN ACCESSORY COMPONENTS



(A)	93000.53.1 Battery Pack 1. For Rolleimarin 1, 2 and 3, and for housings up to serial No. 1399 with clamp connector \$12.10	(D)	Focusing coupler f. Rolleimarin. 93000.15.0 Focusing coupler Rolleimarin 1, 2 \$ 4.40
(B)	93420.99.0 Battery Pack 4. For Rolleimarin 4 and for housings from serial No. 1400 upward (with plug-in connector) \$17.05		93000.24.1 Focusing coupler Rolleimarin 3, 4 \$ 4.40
(C)	Coupling turret f. for following Rolleimarins: 93000.47.0 Coupling turret Rolleimarin 1 \$30.80	(G)	93000.33.0 Lamp Adapter, Bayonet Rolleimarin Flash \$ 4.40
	93000.51.0 Coupling turret Rolleimarin 2 \$30.80	(H)	RFG209 900 Lamp Adapter, European Baseless Bulbs Rolleimarin Flash \$ 8.80
	93000.55.0 Coupling turret Rolleimarin 3 \$30.80	(I)	93000.49.0 Open Frame Finder Rolleimarin \$16.50
	93250.46.0 Coupling turret Rolleimarin 4 \$52.80	(J)	93460.04.0 Rolleimarin Flash Reflector 93460.01.0 Tilt-head for Rolleimarin Flash \$ 7.15

HONEYWELL PHOTOGRAPHIC PRODUCTS



TLR ACCESSORIES

Interchangeable Magnifiers

DIOP- TER ▼	GROUP F		GROUP E		ROLLEIFLEX	PENTAPRISM
	TOP MAGN.	REAR MAGN.	TOP MAGN.	REAR MAGN.	4 x 4	TLR & SLR
-3	92192.41.0	92787.00.0	92152.41.0	92172.41.0	94006.00.0	94370.03.0
-2	92191.41.0	92786.00.0	92151.41.0	92171.41.0	94005.00.0	94370.02.0
+1	92190.41.0	92785.00.0	92150.41.0	92170.41.0	94004.00.0	94370.01.0
-1	92197.41.0	92794.00.0	92157.41.0	92177.41.0	94003.00.0	94370.11.0
-2	92196.41.0	92793.00.0	92156.41.0	92176.41.0	94002.00.0	94370.12.0
-3	92195.41.0	92791.00.0	92155.41.0	92175.41.0	94001.00.0	94370.13.0

Rollei magnifiers are available in +3, +2, +1 and -1, -2, -3 corrective diopters. No charge for replacement if original magnifiers are returned in new condition.

GROUP F—for Rolleiflex models with removable focusing hood only. (Top Magnifier fits SL66)	TOP MAGN.	\$ 3.30
3.5 E2, 3.5E3, 3.5F, 2.8E2, 2.8E3, 2.8F, Tele-and Wide-Angle Rolleiflex.	REAR MAGN.	\$ 2.20
SINGLE MAGNIFIER—top only for all Rolleicord models, Rollei magic, Rolleiflex T & SL 66.		
GROUP E—for Rolleiflex 3.5 (1,100,000 - 1,870,000) and Rolleiflex 2.8E only.	TOP MAGN.	\$ 3.30
Set of 2 — top and rear.	REAR MAGN.	\$ 2.20
Rolleiflex 4 x 4 — Single magnifier — top for Rolleiflex 4 x 4		\$ 3.96
Pentaprism — viewing magnifier for ocular hood of Pentaprisms for SL66 & TLR models		\$ 6.60

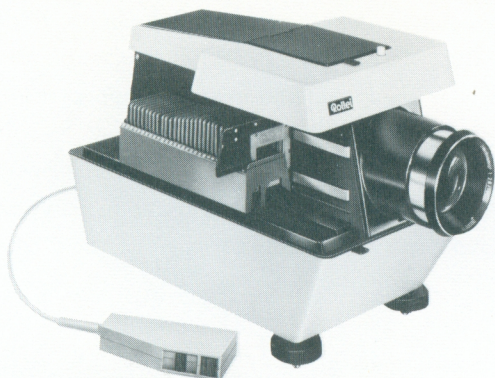
Rollei Serial Number Information

Rollei Models With Fixed Focusing Hood				Rollei Models With Removable Focusing Hood			
		Serial Numbers	Bayonet Size Year			Serial Numbers	Bayonet Size Year
Rolleiflex 3.5	X Synch	1,100,000-1,169,999	I 1950	Rolleiflex 3.5E-2	1st Issue	1,870,000-1,872,999	II '59-60
Rolleiflex 3.5	M-X Synch	1,200,000-1,427,999	I 1951	Rolleiflex 3.5E-2	M-X, EV, Xenotar	2,480,000-2,482,999	II 1961
Rolleiflex 3.5	M-X, E-V Scale	1,428,000-1,499,999 1,700,000-1,737,911	I 1954	Rolleiflex 3.5E-3	M-X, EV, glass facility	2,380,000-2,385,034	II 1962
Rolleiflex 3.5E	b.i. Exp. Meter	1,740,000-1,869,999	II 1956	Rolleiflex 2.8E-2	MX, EV, glass facility	2,350,000-2,356,999	III 1959
Rolleiflex 2.8A	2.8 Tessar X, M-X	1,101,000-1,204,999	II Spec. Hood 1950	Rolleiflex 2.8E-3	MX, EV, glass facility	2,360,000-2,362,024	III 1962
Rolleiflex 2.8B	2.8 Biometer	1,204,000-1,260,000	III 1951	Rolleiflex T	New 3.5 Tessar cross coupled meter	2,100,000-.....	I 1958
Rolleiflex 2.8C	2.8 Planar 2.8 Xenotar	1,260,350-1,299,999 1,444,000-1,475,405	III 1953	Rolleiflex 3.5F	coupled meter glass facility	2,200,000-2,229,000	II 1959
Rolleiflex 2.8D	E-V Scale	1,600,000-1,620,999	III 1955		coupled meter glass facility	2,230,000-2,249,999	II 1960
Rolleiflex 2.8E	b.i. Exp. Meter	1,621,000-1,665,999	III 1956		coupled meter glass facility	*2,250,000-.....	II 1961
Rolleicord III	X Synch	1,137,000-1,344,050	I 1950	Tele-Rolleiflex	4.0/135 Sonnar	2,300,000-.....	III 1959
Rolleicord IV	M-X Synch	1,344,051-1,390,999	I 1953	Rolleiflex 2.8F	coupled meter glass facility	2,400,000-2,451,849	III 1960
Rolleicord V	M-X, E-V Scale	1,500,000-1,583,999	I 1955	Rollei-Magic	Fully Automatic 3.5 Xenar	2,500,000-2,534,999	II 1960
Rolleicord Va	5-format	1,584,000-1,599,999 1,900,000-1,943,999	I 1957	Wide-Angle R'flex	4.0/55 Distagon	2,490,000-2,493,999	IV 1961
Rolleiflex 4x4	No. 127 film	2,000,000-2,099,999	I 4x4 Hood 1957	Rollei-Magic II	Fully Auto and EV Meter Manual	2,535,000-2,547,597	II 1962
				Rolleicord Vb	5-format 3.5 Xenar	2,600,000-.....	I 1962

*Use with Rolleimarin 4—Underwater Housing

HONEYWELL PHOTOGRAPHIC PRODUCTS

Rollei Projectors and Accessories the Rollei Universal



The Rollei Universal Projector accepts all slide sizes from sub-miniature to 2¼" by 2¼". The Universal has full remote control; motor drive focusing, forward and reverse, two magazine channels, a 300 watt lamp, a dual line-voltage range: 110-117v and 120-127v, 60 cycle AC. For projecting Rollei 16S slides, the 45mm lens and special condenser should be selected. The 110mm lens can be used for either 35mm or Super Slides. The 110-160 zoom lens can be used with all slide sizes, as can all of the lenses from 150mm on up to 400mm.

Cat. No.

- 1704 Rollei Universal Projector. UL approved, including AC cord, Remote Control Cable, No. 77-30 Magazine, No. 55-30 Magazine. Less lamp, case and lens..... **\$375.00**

Universal Projector Lenses

Cat. No.

- 1716 45mm (1½") f/2.8 Heidosmat **\$ 60.00**
 1717 Special Condenser and Heat Filter For use with 45mm projection lens. **\$ 39.50**
 1710 110mm (4½") f/2.8 **\$ 75.00**
 1711 150mm (6") f/2.8 **\$ 80.00**
 1712 110-160mm (4½"-6¼") f/3.5 Vario-Heidosmat **\$250.00**
 1713 180mm (7¼") f/3.5 **\$165.00**
 1714 250mm (9⅞") f/3.0 **\$230.00**
 1715 400mm (16") f/4.0 **\$350.00**

Universal Projector Accessories

Cat. No.

- 1707 Folding Case for Universal Projector **\$ 24.50**
 1750 Magazine No. 77-30, Holds 30 2¾" x 2¾" slides **\$ 3.00**

Cat. No.

- 1768 Two magazines, No. 55-50 in plastic container (Hold 50 slides each) **\$ 7.75**
 1769 Two magazines, No. 55-36 in plastic container (Hold 36 slides each) **\$ 5.25**
 1720 Extra Heat Filter, permits use of 500W lamp **\$ 19.50**
 1721 Extension Cable, for Remote Control, 33 ft. **\$ 9.50**
 1722 Cable for coupling German standard Tape Recorder receptacle and Projector. Also connects to remote cable for focus control **\$ 7.00**
 1724 AC Cable, with switch **\$ 8.50**
 1726 Remote Control Cable, replacement **\$ 12.00**
 1731 Lamp, Projection, 300W—CWD **\$ 3.95**
 1732 Lamp, Projection, 500W—DAK **\$ 4.85**
 1733 Lamp, Projection, 400W—CYK — 200 hour **\$ 6.80**

The Rolleiscop



The Rolleiscop is a multiple format projector for subminiature to Super-slides. It features a sliding elevator arrangement that moves transparencies carefully from the magazine into the image plane. Continuous slide shows with as few as 5 slides or as many as 72 may be presented with the Rolleiscop.

Weight: 14 lbs., 14 oz.
Voltage: 110 volts, 60 cycles.

- Cat. No. 1738 ROLLEISCOP PROJECTOR with 4", f/3.5 lens and lamp..... **\$167.50**

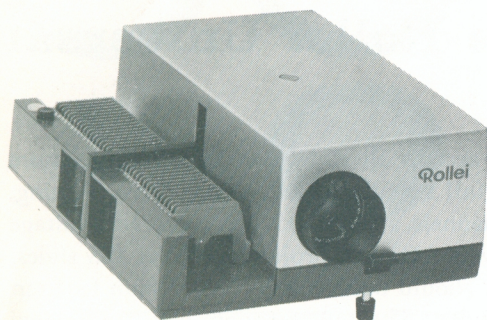
Rolleiscop Accessories

Cat. No.

- 1739 85mm, f/2.8 lens for Rolleiscop **\$ 24.50**
 1740 50mm, f/2.8 lens for Rolleiscop **\$ 44.50**
 1741 110mm, f/2.8 lens for Rolleiscop **\$ 49.50**
 1742 FCS Q.I. Lamp 150 Watt 24 Volt **\$ 7.95**
 1744 Magazine for Rolleiscop **\$ 1.60**
 1736 Rolleiscop Timer **\$ 27.50**

HONEYWELL PHOTOGRAPHIC PRODUCTS

Rollei P35A and P35



The Rollei P35A and P35 projectors are compact and functional units. Both models measure a scant 10" x 9" x 4½". The P35A weighs but 10 lbs. and the P35 9½ lbs. The P35A has completely automatic operation with remote control. The more economical P35 operates manually. Each uses a 150 Watt 24 volt quartz iodine lamp for cool operation, brilliant colors, and long life. The freely accessible slide tray allows easy changing or switching of slides. Slides in 2x2 inch mounts from subminiature to 35mm and instamatic formats may be used.

<table border="0"> <tr> <td colspan="2">Cat. No.</td> </tr> <tr> <td>1771</td> <td>P35A with remote cord, case, lamp and 85mm, f/2.8 Projar lens (special order).....</td> </tr> <tr> <td></td> <td style="text-align: right;">\$149.50</td> </tr> <tr> <td>1770</td> <td>P35 with case, lamp and 85mm, f/2.8 Projar lens (special order).....</td> </tr> <tr> <td></td> <td style="text-align: right;">\$109.50</td> </tr> <tr> <td>1772</td> <td>50mm lens (special order).....</td> </tr> <tr> <td></td> <td style="text-align: right;">\$ 23.50</td> </tr> </table>	Cat. No.		1771	P35A with remote cord, case, lamp and 85mm, f/2.8 Projar lens (special order).....		\$149.50	1770	P35 with case, lamp and 85mm, f/2.8 Projar lens (special order).....		\$109.50	1772	50mm lens (special order).....		\$ 23.50	<table border="0"> <tr> <td colspan="2">Cat. No.</td> </tr> <tr> <td>1774</td> <td>70-120mm zoom lens (special order).....</td> </tr> <tr> <td></td> <td style="text-align: right;">\$ 55.00</td> </tr> <tr> <td>1775</td> <td>Remote control cable (special order) (replacement).....</td> </tr> <tr> <td></td> <td style="text-align: right;">\$ 7.95</td> </tr> <tr> <td>1742</td> <td>FCS Q.I. Lamp 150 watt, 24 volt.....</td> </tr> <tr> <td></td> <td style="text-align: right;">\$ 7.95</td> </tr> </table>	Cat. No.		1774	70-120mm zoom lens (special order).....		\$ 55.00	1775	Remote control cable (special order) (replacement).....		\$ 7.95	1742	FCS Q.I. Lamp 150 watt, 24 volt.....		\$ 7.95
Cat. No.																													
1771	P35A with remote cord, case, lamp and 85mm, f/2.8 Projar lens (special order).....																												
	\$149.50																												
1770	P35 with case, lamp and 85mm, f/2.8 Projar lens (special order).....																												
	\$109.50																												
1772	50mm lens (special order).....																												
	\$ 23.50																												
Cat. No.																													
1774	70-120mm zoom lens (special order).....																												
	\$ 55.00																												
1775	Remote control cable (special order) (replacement).....																												
	\$ 7.95																												
1742	FCS Q.I. Lamp 150 watt, 24 volt.....																												
	\$ 7.95																												

Rollei Slide Mounts with Glass

2¾" x 2¾" FOR 2¼" x 2¼" TRANSPARENCIES

Especially designed in accordance with ISO specifications and recommended for use with the Rollei Universal Projector. Thin, flat glass. Fast assembly and positive closing.

Cat. No. 1754	Box of 12, with regular glass.....	\$ 3.50
Cat. No. 1755	Box of 12, with Anti-Newton ring glass.....	\$ 5.00
Cat. No. 1762	Replacement glass, regular. Box of 50.....	\$ 3.25
Cat. No. 1763	Replacement glass, Anti-Newton ring. Box of 50.....	\$ 6.95

2 x 2 FOR 24 x 36mm TRANSPARENCIES (35mm)

Grey plastic frames with glass. Same fast and positive assembly as for 2¾x2¾ mounts and made to ISO specifications.

Cat. No. 1756	Box of 20, with regular glass.....	\$ 2.95
Cat. No. 1757	Box of 20, with Anti-Newton ring glass.....	\$ 3.50
Cat. No. 1764	Replacement glass, regular. Box of 50.....	\$ 1.25
Cat. No. 1765	Replacement glass, Anti-Newton ring. Box of 50.....	\$ 2.25

2 x 2 FOR 4 x 4cm TRANSPARENCIES (SUPER SLIDES)

Identical to the other 2x2 Rollei Slide Frames except with apertures to accommodate the larger, square picture area of Super Slides.

Cat. No. 1758	Box of 20, with regular glass.....	\$ 3.50
Cat. No. 1759	Box of 20, with Anti-Newton ring glass.....	\$ 4.50
Cat. No. 1766	Replacement glass, regular. Box of 50.....	\$ 1.50
Cat. No. 1767	Replacement glass, Anti-Newton ring. Box of 50.....	\$ 2.95

2 x 2 FOR 12 x 17mm, ROLLEI 16 TRANSPARENCIES

Especially designed for precise mounting of 12x17mm slides.

Cat. No. 2131	Box of 20 Anti-Newton ring glass.....	\$ 3.50
Cat. No. 1761	Replacement glass, Anti-Newton ring, Box of 40.....	\$ 2.95