

KODAK

Half the Picture Interest is in “When?” and “Where?”

The autographic attachment, a feature that is exclusively Eastman, is the Kodak's key to memory.

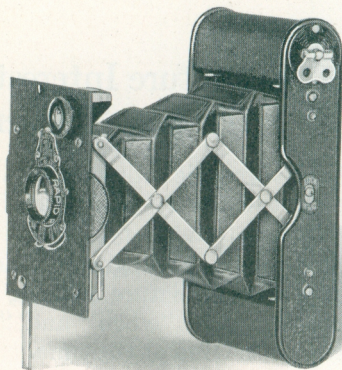
Autographic photography adds to the pleasure of picture making an authentic record of “when” and “where” written on the film at the time.

Children grow up, vacations come and go, old landmarks disappear, and a thousand and one daily impressions crowd out of our minds the all important date and title that make interesting records of our pictures.

Especially is this true of pictures of the children. In later years the correct date will stimulate a lagging memory and conjure up a host of childhood recollections.

Every Kodak and every Folding Brownie described in the following pages is “Autographic” and there is no extra charge for autographic film.

EASTMAN KODAK COMPANY,
ROCHESTER, N. Y.



Vest Pocket Autographic KODAKS

(Fixed Focus Models)

The vest pockets keep good-time records with all the accuracy of larger Kodaks, but with vest pocket convenience. And they yield such sharp negatives, particularly when equipped with Kodak Anastigmat lens *f.* 7.7, that enlargements may be made when desired.

Their compactness, the autographic feature for recording the date and title on the film, and their excellent mechanical and optical equipments make them the most efficient of miniature cameras.

Descriptive Details

Size of pictures: $1\frac{5}{8} \times 2\frac{1}{2}$ inches.

Size of Kodak: $1 \times 2\frac{3}{8} \times 4\frac{3}{4}$ inches.

Capacity without reloading: 8 exposures.

Weight: 11 ounces.

Lenses: *Regular*—Fixed focus only; Meniscus Achromatic or Rapid Rectilinear, $3\frac{1}{2}$ -inch focus. *Special*—Fixed focus models: Kodak Anastigmat, *f.* 7.7, $3\frac{1}{2}$ -inch focus.

Kodak Ball Bearing Shutter No. 0 with finger release only (cable release attachment sold separately).

Speeds: $1/25$, $1/50$ second, and time and "bulb" actions.

Brilliant finder; reversible for vertical or horizontal pictures.

All metal body. *Regular*—Finish, Japan crystal. *Special*—Covered with Morocco grain leather.

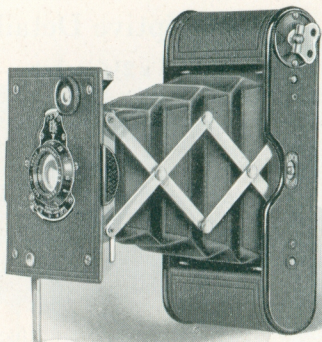
Metal parts finished in nickel and black enamel.

Black Bellows. Autographic feature.

PRICES

Vest Pocket Autographic Kodak (regular model), Meniscus Achromatic lens and Kodak Ball Bearing shutter	\$ 6.50
Ditto, with Rapid Rectilinear lens, speed U. S. 8	8.00
Vest Pocket Autographic Kodak <i>Special</i> (fixed focus model), Kodak Anastigmat lens, <i>f.</i> 7.7, and Kodak Ball Bearing shutter	12.00
Leather Case for V. P. Kodak	1.00
Soft Leather Carrying Bag	1.50
Grain Leather Case	1.50
Belt Carrying Case (russet leather)	1.50
Khaki Belt Carrying Case75
Autographic Film Cartridge , 8 exposures (No. A 127)25
Vest Pocket Cable Release Attachment50
Vest Pocket Kodak Tripod Adapter50
Kodak Portrait Attachment (see page 31)75
Kodak Self-Timer (see page 31)	1.25

The prices of cameras and film include the Excise Tax



Vest Pocket Autographic KODAK Special (Focusing Model)

All Vest Pocket Kodaks are small and efficient, but this model has flexibility of focus as well. A turn of the lens flange gives a range of focus from 3 to 100 feet—accurate focus from close-up portraits without the portrait attachment to landscapes, with the full speed efficiency of the sharp-cutting $f. 6.9$ Kodak Anastigmat lens. The Autographic feature adds the convenience of a note book—ready to jot down the record of your picture story.

This Vest Pocket *Special* will appeal to the enthusiast who wishes large camera capabilities with small camera cost and convenience.

Descriptive Details

Size of pictures: $1\frac{5}{8} \times 2\frac{1}{2}$ inches.

Size of Kodak: $1 \times 2\frac{3}{8} \times 4\frac{3}{4}$ inches.

Capacity without reloading: 8 exposures.

Weight: 11 ounces.

Adjustable focus.

Lens: Kodak Anastigmat, *f.* 6.9, $3\frac{1}{2}$ -inch focus.

Kodak Ball Bearing Shutter No. 0 with finger release only (cable release attachment sold separately).

Speeds: $1/25$, $1/50$ second, and time and "bulb" actions.

Brilliant finder; reversible for vertical or horizontal pictures.

All metal body covered with Morocco grain leather.

Metal parts finished in nickel and black enamel.

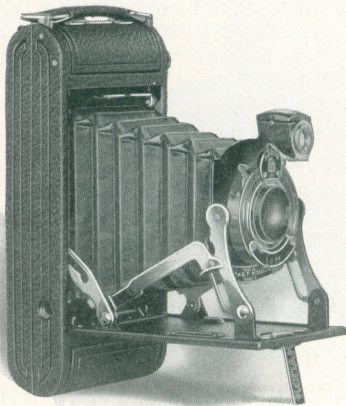
Black bellows.

Autographic feature.

PRICES

Vest Pocket Autographic Kodak <i>Special</i> (focusing model), Kodak Anastigmat lens, <i>f.</i> 6.9, and Kodak Ball Bearing shutter	\$18.00
Leather Case for V. P. Kodak	1.00
Soft Leather Carrying Bag	1.50
Grain Leather Case	1.50
Belt Carrying Case (russet leather)	1.50
Khaki Belt Carrying Case75
Autographic Film Cartridge , 8 exposures (No. A 127)25
Vest Pocket Cable Release Attachment50
Vest Pocket Kodak Tripod Adapter50
Kodak Self-Timer (see page 31)	1.25

The prices of cameras and film include the Excise Tax



No. 1 Pocket KODAK Series II

A new Kodak with an appeal to those who like quick action. Press a button—pull down the bed—make a picture. The button releases the bed, one downward pull operates the Self-Erecting Front which draws out the lens and locks it rigidly in its fixed focus position.

The lens is carefully tested; the shutter, Kodak Ball Bearing, with adjustable

speeds of 1/25, 1/50 and 1/100 of a second, is reliable and accurate, and the autographic attachment is countersunk so that the hand may have the flat surface of the camera back as support while the date and title are noted.

Descriptive Details

Size of pictures: $2\frac{1}{4} \times 3\frac{1}{4}$ inches.

Size of Kodak: $1\frac{5}{16} \times 3\frac{1}{16} \times 6\frac{7}{16}$ inches.

Capacity without reloading: 6 exposures.

Weight: 15 ounces.

Fixed focus only with single Achromatic lens.

Shutter: Kodak Ball Bearing No. 1 with finger release.

Speeds: 1/25, 1/50, 1/100 second, and time and "bulb" actions.

Brilliant finder; reversible for vertical or horizontal pictures.

Aluminum body covered with Levant grain leather.

Metal parts finished in nickel and black enamel.

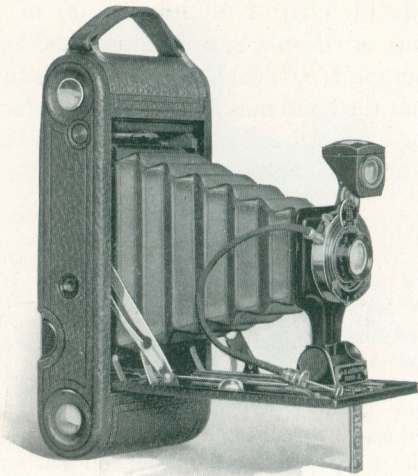
Black bellows. Autographic feature.

Two tripod sockets.

PRICES

No. 1 Pocket Kodak, Series II , with single Achromatic lens and Kodak Ball Bearing Shutter	\$13.50
Black Sole Leather Case , with strap	3.25
Autographic Film Cartridge , 6 exposures (No. A120)25
Kodak Portrait Attachment (see page 31)75
Kodak Self-Timer (see page 31)	1.25
Cable Release Attachment35

The prices of cameras and film include the Excise Tax



Nos. 1 and 1A Autographic KODAK Juniors

The Juniors—high grade, popular cameras that will make good pictures for child or grown-up. Their characteristics are simplicity of operation, sturdiness of construction, neatness of appearance and moderateness of price.

Three lens equipments to choose from including the sharp-cutting Kodak Anastigmat, *f.* 7.7.

Descriptive Details

Size of pictures: No. 1, $2\frac{1}{4} \times 3\frac{1}{4}$ inches. No. 1A, $2\frac{1}{2} \times 4\frac{1}{4}$ inches.

Size of Kodak: No. 1, $1\frac{7}{16} \times 3\frac{5}{8} \times 6\frac{5}{8}$ inches; No. 1A, $1\frac{5}{8} \times 3\frac{3}{4} \times 8$ inches.

Capacity: No. 1, 6 exposures; No. 1A, 12 exposures.

Weight: No. 1, $21\frac{1}{2}$ ounces; No. 1A, $27\frac{1}{2}$ ounces.

Focus: Fixed (with Meniscus Achromatic lens only); or Adjustable (with any listed lens).

Lenses: Meniscus Achromatic; Rapid Rectilinear; No. 1, $4\frac{1}{4}$ -inch focus, No. 1A, $5\frac{1}{4}$ -inch focus; or Kodak Anastigmat, *f.* 7.7, No. 1, $4\frac{1}{3}$ -inch focus, No. 1A, $5\frac{1}{4}$ -inch focus.

Kodak Ball Bearing Shutter, with cable and finger release.

Speeds: No. 1, $1/25$, $1/50$ second; with Kodak Anastigmat, *f.* 7.7 lens, $1/25$, $1/50$ and $1/100$ second; No. 1A, $1/25$, $1/50$ and $1/100$ second. Both with time and "bulb" actions.

Brilliant finder; reversible for vertical or horizontal pictures. Tripod sockets.

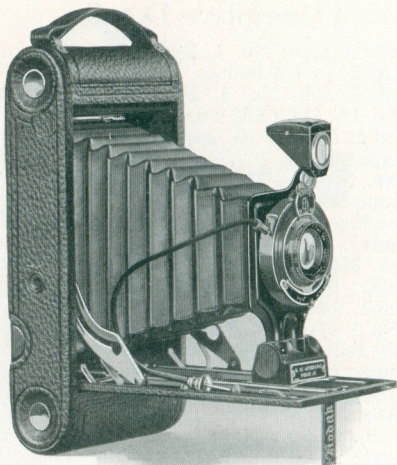
Body covered with fine seal grain leather.

Metal parts finished in nickel and black enamel.

Black bellows. Autographic feature.

PRICES	No. 1	No. 1A
	Jr.	Jr.
Autographic Kodak Junior (fixed focus), Meniscus Achromatic lens and Kodak Ball Bearing shutter . . .	\$12.00	\$13.00
Autographic Kodak Junior (focusing model, with scale), Meniscus Achromatic lens and Kodak Ball Bearing shutter . . .	12.00	13.00
Ditto, with Rapid Rectilinear lens . . .	14.00	15.00
Ditto, with Kodak Anastigmat lens <i>f.</i> 7.7 . . .	19.00	20.00
Black Sole Leather Case , with strap . . .	3.50	3.50
Soft Leather Bag , with strap . . .	2.00	2.25
Autographic Film Cartridge , 12 exposures (No. A116) for No. 1A . . .		
Ditto, 6 exposures (No. A120) for No. 1; (No. A116) for No. 1A25	.30
Kodak Portrait Attachment (see p. 31)75	.75
Kodak Self-Timer (see page 31) . . .	1.25	1.25

The prices of cameras and film include the Excise Tax



No. 2C Autographic KODAK Junior

The 2C made a record for the speed with which it gave popularity to a new size of picture. Its proportions, $2\frac{7}{8} \times 4\frac{7}{8}$, are so well balanced that they are pleasing for either horizontal or vertical pictures.

The camera itself is of very convenient size and of its three lens equipments the Kodak Anastigmat $f.7.7$ and Ilex Universal Shutter with seven adjustable speeds deserve special mention.

Descriptive Details

Size of pictures: $2\frac{7}{8} \times 4\frac{7}{8}$ inches.

Size of Kodak: $1\frac{3}{4} \times 4\frac{3}{8} \times 8\frac{3}{4}$ inches.

Capacity without reloading: 10 exposures.

Weight: 34 ounces.

Adjustable focus only; with automatic focusing lock.

Lenses: Meniscus Achromatic; Rapid Rectilinear, $5\frac{1}{2}$ -inch focus; or Kodak Anastigmat, *f.* 7.7, $5\frac{1}{2}$ -inch focus.

Kodak Ball Bearing Shutter, with cable and finger release.

Speeds: $1/25$, $1/50$ and $1/100$ second, and time and "bulb" actions; Ilex Universal Shutter with anastigmat equipment only. Speeds: 1, $1/2$, $1/5$, $1/10$, $1/25$, $1/50$, $1/100$ second, with time and "bulb" actions.

Brilliant finder; reversible for vertical or horizontal pictures.

Back and bed of aluminum; covered with fine seal grain leather.

Metal parts finished in nickel and black enamel.

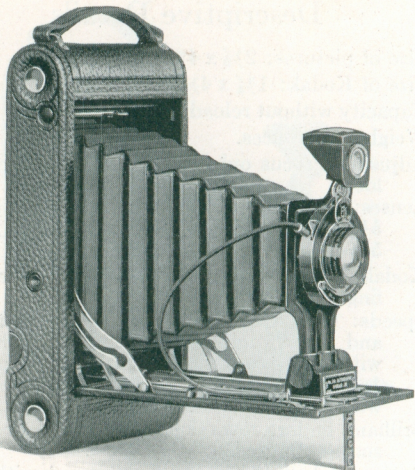
Black bellows. Autographic feature.

Two Tripod Sockets.

PRICES

No. 2C Autographic Kodak Junior , with Meniscus Achromatic lens and Kodak Ball Bearing shutter	\$16.00
Ditto, with Rapid Rectilinear lens	18.00
Ditto, with Kodak Anastigmat, <i>f.</i> 7.7 lens	23.00
Ditto, with Kodak Anastigmat, <i>f.</i> 7.7 lens and Ilex Universal shutter	27.00
Black Sole Leather Case , with strap	4.00
Soft Leather Carrying Bag , with strap	2.50
Autographic Film Cartridge , 10 exposures (No. A 130)75
Ditto, 6 exposures45
Kodak Portrait Attachment (see page 31)75
Kodak Self-Timer (see page 31)	1.25

The prices of cameras and film include the Excise Tax



No. 3A Autographic KODAK Junior

There is little need for comment on the 3A (post card) picture size. It is known and approved by the photographic world. The mechanical and optical equipment of the camera is equally satisfying, offering, as it does, every essential for sure and simple picture making. Especially is this true of its high grade but moderately priced Kodak Anastigmat equipment.

Descriptive Details

Size of pictures: $3\frac{1}{4} \times 5\frac{1}{2}$ inches.

Size of Kodak: $1\frac{15}{16} \times 5\frac{1}{8} \times 9\frac{3}{4}$ inches.

Capacity without reloading: 10 exposures.

Weight: 37 ounces.

Adjustable focus only; with automatic focusing lock.

Lenses: Meniscus Achromatic; Rapid Rectilinear, $6\frac{3}{4}$ -inch focus; or Kodak Anastigmat, *f.* 7.7, $6\frac{3}{4}$ -inch focus.

Kodak Ball Bearing Shutter No. 2, with cable and finger release. Speeds: 1/25, 1/50 and 1/100 second, and time and "bulb" actions. Ilex Universal Shutter with anastigmat equipment only. Speeds: 1, 1/2, 1/5, 1/25, 1/50, 1/100 second with time and "bulb" actions.

Brilliant finder; reversible for vertical or horizontal pictures.

Back and bed of aluminum, covered with fine seal grain leather.

Metal parts finished in nickel and black enamel.

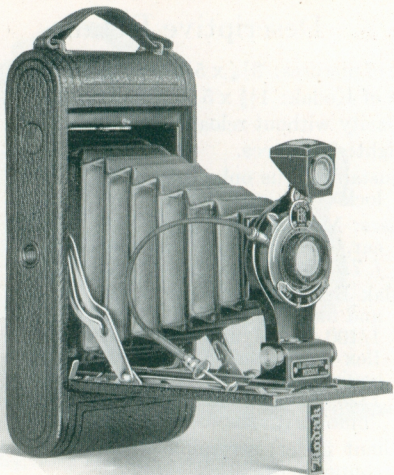
Black bellows. Autographic feature.

Two Tripod Sockets.

PRICES

No. 3A Autographic Kodak Junior , with Meniscus Achromatic lens	\$17.50
Ditto, with Rapid Rectilinear lens	20.00
Ditto, with Kodak Anastigmat lens, <i>f.</i> 7.7	25.00
Ditto, with Kodak Anastigmat lens, <i>f.</i> 7.7 and Ilex Universal shutter	29.00
Black Sole Leather Carrying Case , with strap	4.25
Soft Leather Carrying Bag	3.00
Autographic Film Cartridge , 10 exposures (No. A 122)90
Ditto, 6 exposures55
Kodak Portrait Attachment (see page 31)75
Kodak Self-Timer (see page 31)	1.25

The prices of cameras and film include the Excise Tax



No. 1A Autographic KODAK

A glance at this Regular convinces you of the care and thought that have been put into its construction. Every detail speaks sturdiness and quality of materials. The picture size, $2\frac{1}{2} \times 4\frac{1}{4}$ inches, is pleasing; the lens of ample focal length for good perspective; the automatic ball bearing shutter easily operated. Throughout this model strict

attention has been paid to perfection of details. The body is of aluminum, combining lightness and strength, and is covered with Levant grain leather. It's a camera you will easily make friends with.

Descriptive Details

Size of pictures: $2\frac{1}{2} \times 4\frac{1}{4}$ inches.

Size of Kodak: $1\frac{5}{8} \times 3\frac{3}{4} \times 8$ inches.

Capacity without reloading: 12 exposures.

Weight: 27 ounces.

Adjustable focus only, with automatic focusing lock.

Lenses: Rapid Rectilinear, $5\frac{1}{4}$ -inch focus; or Kodak Anastigmat, *f.* 7.7, $5\frac{1}{4}$ -inch focus.

Kodak Ball Bearing Shutter, with cable and finger release.

Speeds: 1/25, 1/50 and 1/100 second, and time and "bulb" actions.

Brilliant finder; reversible for vertical or horizontal pictures.

Back and bed of aluminum, covered with Levant grain leather.

Metal parts finished in nickel and black enamel.

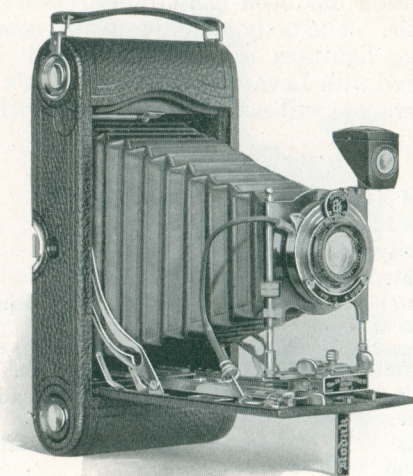
Black leather bellows. Autographic feature.

Two Tripod Sockets.

PRICES

No. 1A Autographic Kodak , with Rapid Rectilinear lens and Kodak Ball Bearing shutter . . .	\$19.00
Ditto, with Kodak Anastigmat lens, <i>f.</i> 7.7 . . .	24.00
Black Sole Leather Case , with strap . . .	3.50
Soft Leather Carrying Bag , with strap . . .	2.25
Autographic Film Cartridge , 12 exposures (No. A116)60
Ditto, 6 exposures30
Kodak Portrait Attachment (see page 31)75
Kodak Self-Timer (see page 31) . . .	1.25

The prices of cameras and film include the Excise Tax



Nos. 3 and 3A Autographic KODAKS

The amateur at once appreciates the completeness of these two cameras—their adaptability to a wide range of hand camera work. Each has a rising and falling front, and each may be converted to the use of Kodak Cut Film or plates by the addition of a combination back with ground glass focusing screen.

Descriptive Details

Size of pictures: No. 3, $3\frac{1}{4} \times 4\frac{1}{4}$ inches; No. 3A, $3\frac{1}{4} \times 5\frac{1}{2}$ inches.

Size of Kodak: No. 3, $1\frac{3}{4} \times 4\frac{1}{2} \times 7\frac{1}{2}$ inches; No. 3A, $2 \times 4\frac{3}{4} \times 9\frac{1}{2}$ inches.

Capacity: No. 3, 12, No. 3A, 10 exposures.

Weight: No. 3, 30 ounces; No. 3A, 41 ounces.

Adjustable focus, with automatic focusing lock.

No. 3A has double focusing scale for film or plates.

Rising, falling and sliding fronts.

Lenses: Rapid Rectilinear, No. 3, $5\frac{1}{4}$ -inch focus;

No. 3A, $6\frac{1}{2}$ -inch focus; Kodak Anastigmat, *f*.7.7, No. 3, $5\frac{1}{4}$ -inch focus; No. 3A, $6\frac{1}{2}$ -inch focus.

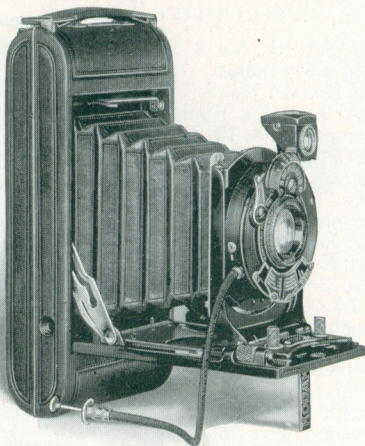
Kodak Ball Bearing Shutter, $1/25$, $1/50$ and $1/100$ second, and time and "bulb" actions; Ilex Universal, on 3A with anastigmat equipment only, seven speeds from $1/100$ to 1 second, and time and "bulb" actions.

Brilliant reversible finder. Back and bed of aluminum, covered with seal grain leather. Metal parts finished in nickel and black enamel. Black leather bellows. Autographic. Two Tripod Sockets.

PRICES

	No. 3	No. 3A
Autographic Kodak, Rapid Rectilinear lens, Kodak Ball Bearing shutter	\$19.00	\$22.50
Ditto with Kodak Anastigmat lens, <i>f</i> .7.7	24.00	27.50
Ditto with Kodak Anastigmat lens, <i>f</i> .7.7 and Ilex Universal shutter	31.50
Black Sole Leather Case, with strap	3.75	4.50
Soft Leather Carrying Bag	2.50	3.00
Combination Back	4.00	4.00
Double Glass Plate Holders, each	1.50	1.50
Kodak Cut Film Sheaths, each10	.15
Kodak Cut Film, package of 1267	.93
Autographic Film Cartridges, 12 exp.		
(No. A118) for No. 3; 10 exposures		
(No. A122) for No. 3A90	.90
Ditto, 6 exposures45	.55
Kodak Portrait Attachment (see page 31)75	.75
Kodak Self-Timer (see page 31)	1.25	1.25

The prices of cameras and film include the Excise Tax



No. 1 Autographic KODAK Special

From every angle this new Special excites admiration. Genuine sealskin covering, countersunk autographic attachment so that the hand may rest flat while the record is written, aluminum body, Kodak Anastigmat *f.6.3* lens, Kodamatic seven-speed shutter from $1/200$ of a second to $1/2$ second, rising front, and all in a camera that fits in your hand. The negatives, $2\frac{1}{4} \times 3\frac{1}{4}$,

are small but they have the enlarging quality that puts them on a par with larger negatives.

Descriptive Details

Size of pictures: $2\frac{1}{4} \times 3\frac{1}{4}$ inches.

Size of Kodak: $1\frac{5}{16} \times 3\frac{1}{16} \times 6\frac{7}{16}$ inches.

Capacity without reloading: 6 exposures.

Weight: 18 ounces.

Adjustable focus only, with screw focusing device.

Lenses: For details see price list below.

Shutter: Kodamatic, with cable release.

Speeds: Seven, from 1/200 to 1/2 second with time and "bulb" actions.

Brilliant finder; reversible for vertical or horizontal pictures.

Aluminum body covered with finest quality genuine sealskin.

Metal parts finished in nickel and black enamel.

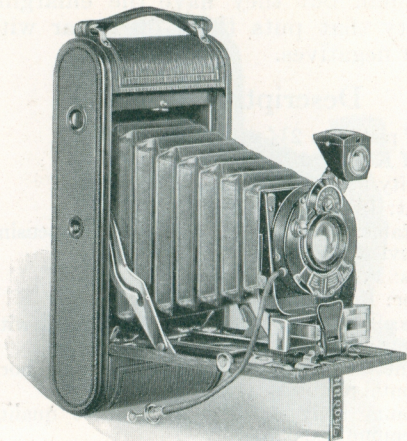
Black leather bellows. Autographic feature.

Two Tripod Sockets.

PRICES

No. 1 Autographic Kodak Special , with Kodak Anastigmat <i>f.</i> 6.3 lens, $4\frac{1}{2}$ -inch focus and Kodamatic shutter	\$50.00
No. 1 Autographic Kodak Special , with Bausch & Lomb Kodak Anastigmat <i>f.</i> 6.3 lens, No. 1, $4\frac{1}{4}$ -inch focus, and Kodamatic shutter	62.00
No. 1 Autographic Kodak Special , with Bausch & Lomb Tessar Series IIb, <i>f.</i> 6.3 lens No. 3, $4\frac{1}{2}$ -inch focus, and Kodamatic shutter	74.00
No. 1 Autographic Kodak Special , with Bausch & Lomb Tessar Series Ic, <i>f.</i> 4.5 lens No. 12, $3\frac{1}{2}$ -inch focus, and Kodamatic shutter	71.00
Long-grain Leather, Velvet-lined Case , with strap	4.00
Autographic Film Cartridge , 6 exposures (No. A 120)25
Kodak Portrait Attachment (see page 31)75
Kodak Self-Timer (see page 31)	1.25

The prices of cameras and film include the Excise Tax



No. 1A Autographic KODAK Special

Special means to the Kodak the most complete and efficient equipment practical in a hand camera plus that refinement of finish which gives pride and satisfaction in ownership. A feature of the 1A *Special* is the Kodak Range Finder, which simplifies focusing with the high speed Kodak Anastigmat, $f.6.3$ lens. The Eastman-made Kodamatic shutter is also regular equipment.

Descriptive Details

Size of pictures: $2\frac{1}{2} \times 4\frac{1}{4}$ inches.

Size of Kodak: $1\frac{5}{8} \times 3\frac{3}{4} \times 8$ inches.

Capacity without reloading: 12 exposures.

Weight: 34 ounces.

Adjustable focus, with Kodak Range Finder and rack and pinion for focusing; also regular focusing scale.

Lenses: For details, see price list below.

Kodamatic, Ilex Acme, or Optimo Shutter with cable and finger release. Kodamatic speeds—Seven, from $1/200$ to $1/2$ second; Ilex Acme and Optimo—Eight, from $1/300$ to 1 second, all with time and “bulb” actions.

Brilliant finder; reversible for vertical or horizontal pictures.

Aluminum body covered with finest long-grain calf.

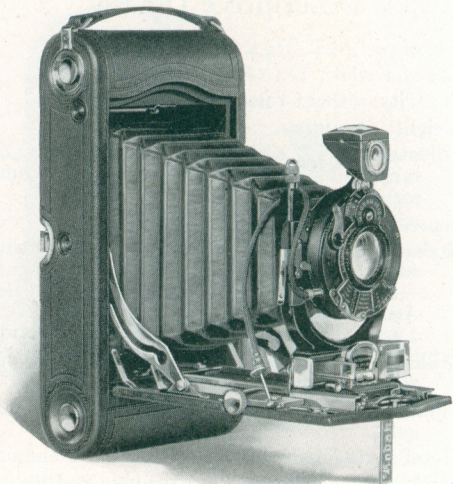
Metal parts finished in nickel and black enamel.

Black leather bellows. Autographic feature.

PRICES

No. 1A Autographic Kodak Special , with Kodak Anastigmat, <i>f.</i> 6.3 lens, 5-inch focus, and Kodamatic shutter	\$60.00
Ditto, with Ilex Acme or Optimo shutter	50.00
No. 1A Autographic Kodak Special , with Bausch & Lomb Kodak Anastigmat <i>f.</i> 6.3 lens No. 2, $5\frac{1}{4}$ -inch focus, and Kodamatic shutter	73.00
Ditto, with Ilex Acme or Optimo shutter	63.00
No. 1A Autographic Kodak Special , with Bausch & Lomb Tessar Series IIb <i>f.</i> 6.3 lens No. 4, $5\frac{1}{4}$ -inch focus, and Kodamatic shutter	81.00
Ditto, with Ilex Acme or Optimo shutter	71.00
Grain Leather, Velvet-lined Case , with strap	4.75
Soft Leather Carrying Bag	2.25
Autographic Film Cartridge , 12 exposures (No. A 116)60
Ditto, 6 exposures30
Kodak Portrait Attachment (see page 31)75
Kodak Self-Timer (see page 31)	1.25

The prices of cameras and film include the Excise Tax



Nos. 3 and 3A Autographic KODAKS Special

High-speed, high-grade lens and shutter equipment, plus complete auxiliary camera appointments, and you have as a natural result just as good hand cameras as it is possible to make, the Nos. 3 and 3A Autographic Kodaks *Special*.

Descriptive Details

Pictures: No. 3, $3\frac{1}{4} \times 4\frac{1}{4}$ inches; No. 3A, $3\frac{1}{4} \times 5\frac{1}{2}$ inches.

Size of Kodak: No. 3, $1\frac{7}{8} \times 4\frac{1}{2} \times 8$ inches; No. 3A, $2 \times 4\frac{3}{4} \times 9\frac{1}{2}$ inches.

Capacity: No. 3, 12; No. 3A, 10 exposures.

Weight: No. 3, 32 ounces; No. 3A, 42 ounces.

Adjustable focus, with rack and pinion, also regular focusing scale; No. 3 also equipped with spirit level; No. 3A, with Kodak Range Finder. Rising and falling front. Cable and finger release. Autographic feature.

Lenses and shutters: For details, see below.

Kodamatic, Ilex Acme or Optimo Shutters.

Kodamatic shutter: Seven speeds, No. 3, $1/200$ to $1/2$ second; No. 3A, $1/150$ to $1/2$ second.

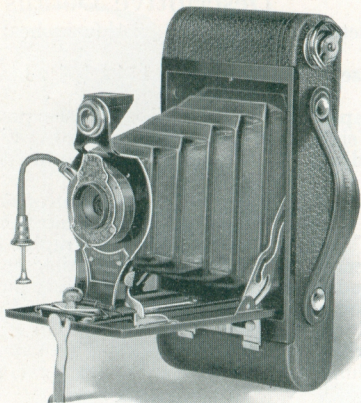
Brilliant reversible finder. Two tripod sockets.

Aluminum body covered with Persian Morocco.

PRICES

	No. 3	No.3A
Autographic Kodak Special , with Kodak Anastigmat <i>f.</i> 6.3 lens, 5-inch focus on No. 3; $6\frac{3}{4}$ -inch focus on No. 3A; and Kodamatic shutter	\$55.00	\$70.00
Ditto, with Ilex Acme or Optimo shutter	45.00	60.00
Ditto, with Bausch & Lomb Kodak Anastigmat <i>f.</i> 6.3 lens No. 2, $5\frac{1}{4}$ -inch focus on No. 3; lens No. 4, $6\frac{3}{4}$ -inch focus on No. 3A; and Kodamatic shutter	70.00	90.00
Ditto, with Ilex Acme or Optimo shutter	60.00	80.00
Ditto, with Bausch & Lomb Tessar Series IIb Anastigmat <i>f.</i> 6.3 lens No. 4, $5\frac{1}{4}$ -inch focus on No. 3; lens No. 5K, $7\frac{1}{4}$ -inch focus on No. 3A; and Kodamatic shutter	80.00	100.00
Ditto, with Ilex Acme or Optimo shutter	70.00	90.00
Grain Leather, Velvet-lined Case	4.75	5.50
Soft Leather Carrying Bag	2.50	3.00
Combination Back	4.50	5.00
Double Glass Plate Holders , each	1.50	1.50
Kodak Cut Film Sheaths10	.15
Kodak Cut Film , package of 1267	.93
Autographic Film Cartridge , 12 exposures (No. A118) for No. 3; 10 exposures (No. A122) for No. 3A90	.90
Ditto, 6 exposures45	.55
Kodak Portrait Attachment (see p. 31)75	.75
Kodak Self-Timer (see page 31)	1.25	1.25

The prices of cameras and film include the Excise Tax



Nos. 2 and 2A Folding Autographic **BROWNIES**

That they are Eastman-made in Eastman factories is sufficient surety that they will come up to high picture-making standards. Their simplicity of construction and operation are Brownie characteristics that make good picture results easy. And they have the autographic feature to keep the picture record.

Descriptive Details

Size of pictures: No. 2, $2\frac{1}{4} \times 3\frac{1}{4}$ inches; No. 2A, $2\frac{1}{2} \times 4\frac{1}{4}$ inches.

Size of camera: No. 2, $1\frac{1}{4} \times 3\frac{1}{8} \times 6\frac{1}{2}$ inches; No. 2A, $1\frac{7}{16} \times 3\frac{3}{8} \times 7\frac{7}{8}$ inches.

Capacity without reloading: No. 2, 6 exposures; No. 2A, 12 exposures.

Weight: No. 2, 19 ounces; No. 2A, $25\frac{1}{2}$ ounces.

Adjustable focus, with automatic focusing lock.

Lenses: Meniscus Achromatic; or Rapid Rectilinear; No. 2, $3\frac{3}{4}$ -inch focus; No. 2A, 5-inch focus.

Kodak Ball Bearing Shutter, with Autotime Scale and cable and finger release.

Speeds: No. 2, $1/25$ and $1/50$ second; No. 2A, $1/25$, $1/50$ and $1/100$ second, with time and "bulb" actions.

Ground-glass finder; reversible for vertical or horizontal pictures.

Metal body covered with durable imitation leather.

Metal parts finished in nickel and black enamel.

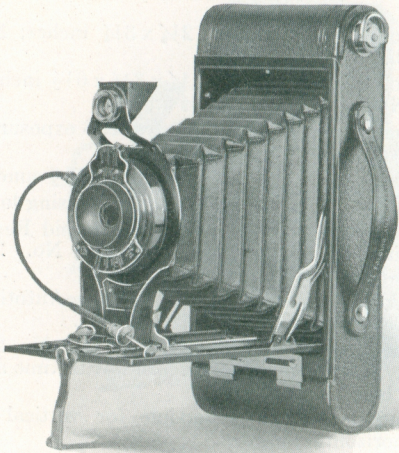
Black bellows. Autographic feature.

Two Tripod Sockets.

PRICES

	No. 2	No.2A
Folding Autographic Brownie , with Meniscus Achromatic lens and Kodak Ball Bearing shutter	\$ 9.00	\$10.00
Ditto, with Rapid Rectilinear lens	11.00	12.00
Carrying Case , for Folding Autographic Brownie, with strap	1.50	1.60
Autographic Film Cartridges , for No. 2A, 12 exposures (No. A116)60
Ditto, 6 exposures, for No. 2 (No. A120) for No. 2A (No. A116)25	.30
Kodak Portrait Attachment (see page 31)75	.75
Kodak Self-Timer (see page 31)	1.25	1.25

The prices of cameras and film include the Excise Tax



Nos. 2C and 3A Folding Autographic **BROWNIES**

These substantially constructed Brownies have a strong appeal because of the size of pictures they make. The lenses are carefully tested, the Kodak Ball Bearing Shutters have snapshot speeds of $1/25$, $1/50$ and $1/100$ of a second, as well as time and bulb actions. They make excellent pictures.

Descriptive Details

Size of pictures: No. 2C, $2\frac{7}{8} \times 4\frac{7}{8}$ inches; No. 3A, $3\frac{1}{4} \times 5\frac{1}{2}$ inches.

Size of camera: No. 2C, $1\frac{3}{4} \times 3\frac{3}{4} \times 8\frac{1}{16}$ inches; No. 3A, $1\frac{1}{16} \times 4\frac{5}{16} \times 9\frac{5}{16}$ inches.

Capacity without reloading: 10 exposures.

Weight: No. 2C, 27 ounces; No. 3A, 32 ounces.

Adjustable focus, with automatic focusing lock.

Lenses: Meniscus Achromatic, Rapid Rectilinear; No. 2C, $5\frac{1}{2}$ -inch focus; No. 3A, $6\frac{1}{4}$ -inch focus.

Kodak Ball Bearing Shutter, with Autotime Scale, and cable and finger release.

Speeds: $1/25$, $1/50$ and $1/100$ second; and time and "bulb" actions.

Ground-glass finder, reversible for vertical or horizontal pictures.

Metal body covered with durable imitation leather.

Metal parts finished in nickel and black enamel.

Black bellows. Autographic feature.

Two Tripod Sockets.

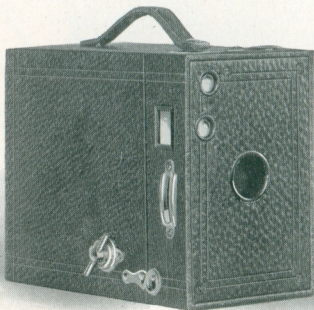
PRICES

	No. 2C	No. 3A
Folding Autographic Brownie , with Meniscus Achromatic lens and Kodak Ball Bearing shutter . . .	\$13.00	\$14.50
Ditto, with Rapid Rectilinear lens . . .	15.00	17.00
Carrying Case , with strap	1.70	1.80
Autographic Film Cartridges , 10 exposures, $2\frac{7}{8} \times 4\frac{7}{8}$ (No. A 130) for No. 2C; 10 exposures, $3\frac{1}{4} \times 5\frac{1}{2}$ (No. A 122) for No. 3A75	.90
Ditto, 6 exposures45	.55
Kodak Portrait Attachment (see page 31)75	.75
Kodak Self-Timer (see page 31)	1.25	1.25

The prices of cameras and film include the Excise Tax

Nos. 0, 2, 2A, 3 and 2C BROWNIES

The box Brownies are the simplest and most inexpensive cameras that give grown-up performance even in the hands of children. They differ in size but have similar characteristics of reliability.



Descriptive Details

Size of pictures: No. 0, $1\frac{5}{8} \times 2\frac{1}{2}$ inches; No. 2, $2\frac{1}{4} \times 3\frac{1}{4}$ inches; No. 2A, $2\frac{1}{2} \times 4\frac{1}{4}$ inches; No. 2C, $2\frac{7}{8} \times 4\frac{7}{8}$ inches; No. 3, $3\frac{1}{4} \times 4\frac{1}{4}$ inches.

Size of cameras: No. 0, $2\frac{5}{8} \times 3\frac{3}{8} \times 4\frac{1}{8}$ inches; No. 2, $3\frac{1}{4} \times 4 \times 5\frac{5}{8}$ inches; No. 2A, $3\frac{7}{16} \times 5\frac{1}{8} \times 6\frac{1}{8}$ inches; No. 2C, $3\frac{7}{8} \times 6\frac{1}{4} \times 7\frac{1}{4}$ inches; No. 3, $4\frac{3}{8} \times 5\frac{1}{8} \times 6\frac{1}{8}$ inches.

Capacity: No. 0, 8 exposures; No. 2, 6 exposures; No. 2A, 12 exposures; No. 2C, 10 exposures; No. 3, 12 exposures.

Weight: No. 0, 8 ounces; No. 2, 15½ ounces;
 No. 2A, 19½ ounces; No. 2C, 28 ounces;
 No. 3, 25 ounces.

Fixed focus only.

Lenses: No. 0 and No. 2, Meniscus; Nos. 2A,
 2C, and 3, Meniscus Achromatic.

Shutters: Eastman Rotary Shutter; No. 0,
 one stop and time action; Nos. 2, 2A, 2C
 and 3, 3 stops and time action.

Two ground-glass finders for vertical or hori-
 zontal pictures.

Body covered with imitation leather; metal
 parts finished in nickel and black enamel.

No. 2C and No. 3 have two tripod sockets.

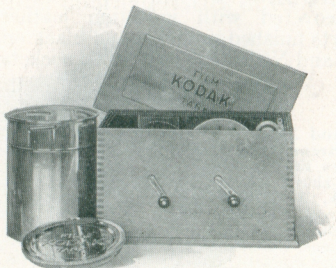
PRICES

	No. 0	No. 2	No. 2A	No. 3	No. 2C
Nos. 0 and 2 Brownie Cameras , Meniscus lenses, Eastman Rotary shutters . . .	\$2.00	\$2.50			
Nos. 2A, 3 and 2C Brownie Cameras , Meniscus Achromatic lens, Eastman Rotary shutter . . .			\$3.50	\$4.50	\$5.00
Brownie Carrying Case . . .	1.00				
Brownie Carrying Case with strap . . .		1.25	1.50	1.60	1.60
N. C. Film Cartridge , 8 exposures, 1⅝ x 2½ (No. 127) for No. 025				
Ditto, 6 exposures, 2¼ x 3¼ (No. 120) for No. 225			
Ditto, 12 exposures, 2½ x 4¼ (No. 116) for No. 2A; 3¼ x 4¼ (No. 124) for No. 360	.90	
Ditto, 6 exposures30	.45	
Ditto, 10 exposures, 2⅞ x 4⅞ (No. 130) for No. 2C75
Ditto, 6 exposures45
Brownie Tripod Adapter25	.25	.25		
Kodak Portrait Attachment75	.75	.75	.75	.75
Developing and Printing Outfits . . .	1.00	1.65	1.65	1.65	1.65

The prices of cameras and film include the Excise Tax

Kodak Film Tanks

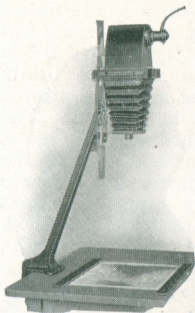
As far as developing goes the novice can produce just as good negatives as the expert with the Kodak Film Tank. There is no guess work—it's merely a matter of following simple instructions—and all by daylight.



PRICES

Brownie Kodak Film Tank , for use with No. 1 and No. 2 Brownie Cartridges, complete . . .	\$ 3.50
Vest Pocket Kodak Film Tank , for Vest Pocket Cartridges, complete	3.00
2½-inch Kodak Film Tank , for use with all Kodak or Brownie Cartridges having a film width 2½ inches or less, complete	4.50
3½-inch Kodak Film Tank , for use with all Kodak and Brownie Cartridges having a film width of 3½ inches or less, complete	5.50
5-inch Kodak Film Tank , for use with all Kodak and Brownie Cartridges, having a film width of 5 inches or less, complete	6.50
Kodak Tank Developer Powders , for Brownie Kodak Film Tank, per package, ½ dozen20
Ditto, for Vest Pocket Tank20
Ditto, for 2½-inch tank, per package, ½ dozen25
Ditto, for 3½-inch tank, per package, ½ dozen25
Ditto, for 5-inch tank, per package, ½ dozen30
Kodak Acid Fixing Powder , per ¼-pound pkg.10
Ditto, per ½-pound package15
Ditto, per 1-pound package25

The Kodak Auto-Focus Enlarger



A new self-focusing camera that makes enlarging as easy and almost as fast as contact printing. The image is always in focus; the camera moves up and down to change the image size.

Attaches to any flat table top—makes prints from 1½ to 3½ diameters from negatives up to 4 x 6 inches. Largest possible print, 14 x 21 inches. A diffusing disc is supplied separately for soft focus enlargements.

Kodak Auto-Focus Enlarger with Kodak Anastigmat Lens, electric cord and plug and six flexible metal masks, 60 Watt Mazda lamp not included.
 Price, including Excise Tax \$35.00
 Diffusing Disc, extra 1.00

Kodak Portrait Attachment



Any subject that can be photographed close-up is a subject for the Portrait Attachment. It slips over the regular lens and permits the taking of portraits or other subjects at close range. It does not alter the exposure or change the operation of the Kodak in any way.

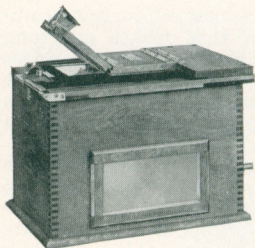
Kodak Portrait Attachment \$.75

Kodak Self Timer

The Self Timer operates the camera shutter. It is attached to the cable release and set to "go off" at a sufficient interval to enable one to get into a group or make self-portraits.

Kodak Self Timer \$1.25

Kodak Amateur Printer



An automatic masking device on the top of the printer holds the negative firmly and gives the print a white margin. The light inside the box is switched on as the hinged top presses the paper in contact with the negative. A red bulb gives the

light for adjusting negatives.

The Printer with 5½ feet of electric cord and plug, but without Mazda printing light \$10.00

Kodak Cut Film

Kodak Cut Film offers decided advantages over glass plates. It is non-halation, light, unbreakable and has fine grain, gradation and exceptional latitude. By using the Combination Back and Kodak Cut Film Sheath, Nos. 3 and 3A Kodaks both regular and *Special* models are adapted to the use of Kodak Cut Film.

The regular Kodak Cut Film has the speed of the best portrait plate emulsions: Kodak Cut Film *Super Speed* has all the quality of the regular emulsion but gives the best possible results under the most difficult light conditions or when exposures must necessarily be short.

	$3\frac{1}{4} \times 4\frac{1}{4}$	$3\frac{1}{4} \times 5\frac{1}{2}$
Kodak Cut Film, per doz.	\$0.67	\$0.93
Kodak Cut Film, <i>Super Speed</i> , per doz.77	1.03

Prices of Film include the Excise Tax

EASTMAN KODAK COMPANY,
Rochester, N. Y., *The Kodak City.*

All prices in this booklet subject to change without notice.

THE FAIR
STATE, ADAMS AND DEARBORN STS.
CHICAGO, ILL.