

Discontinued Polaroid Rollfilm Cameras

Form 268A

©Polaroid December 1968

Discontinued Polaroid Roll Film Cameras

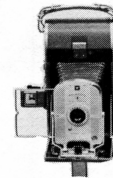
Model 95 Series Cameras "Speedliners" (Brown)



MODEL
95



MODEL
95A



MODEL
95B

Years Manufactured	1948-1953	1954-1957	1957-1961
Serial Number	Six Digits	Started with #950001. S prefix added starting with #111178.	S600000's-S700000's. LS prefix (starting 5-57), denoting internally lightsealed for 3000-speed Type 47.
Film Types	Series 40 size rolls producing 3 1/4" x 4 1/4" pictures. 4-S filter required when using Type 47 film outdoors in bright light, also external lightseals required if serial number not preceded by letter "L".		
Shutter Number System	Original Polaroid Land Camera numbers 1-8.		EV numbers 10-17
	Single manual adjustment sets specific aperture and shutter speed combination. Original #1-8 used on 95-95A correspond to EV #10-17 on 95B — i.e., #1 gives same effective exposure as EV #10.		
Lens Type and Shutter Speeds	135mm focal length f/11 to f/45 1/8 to 1/60 "B" setting for time exposures	130mm focal length f/8.8 to f/35 1/12 to 1/100 "B" setting for time exposures	
	See chart on last page for complete list of aperture/shutter speed combinations.		
Flash	Flash connection on lens board accepts bayonet-type plug offered on Polaroid flashgun models #200, #201, #202, which use #5 and Press-25 bulbs (blue for color) and on the Polaroid #252 wink-light and flasher which uses AG-1 bulbs (blue for color).		
	Electronic flash cannot be used. The smaller lens and different flash synchronization limit range of wink-light with Type 47 film to 5' or 6'.	Electronic flash connection on shutter housing provides required zero delay on #4-8; EV #13-17.	
Viewfinder	Optical eye level finder with ball and mast centering finder on shutter housing.	Optical eye level finder with wire frame press-type finder mounted on shutter housing.	
Rangefinder	None. Camera focuses by manually setting lever on camera bed to estimated footage.		
Other	Push button film release. Negative spool loads into spring-clips on bridge. ¹ #440-440A Photoelectric Shutter attachments cannot be used.	Toggle switch film release. Drop-in loading for negative roll.	
		Latching cutter bar started with LS-801556. (8-59)	
Cable release socket and tripod sockets for vertical and horizontal mounting. No guide rails when manufactured. ²			

**Model 80 Series
Cameras
"Highlanders"
(Grey)**



MODEL
80



MODEL
80A



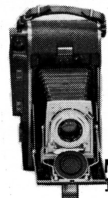
MODEL
80B

Years Manufactured	1954-1957	1957-1959	1959-1961
Serial Number	H and 6 Digits	H and 6 Digits C and 6 Digits (starting 8-58) LC and 6 Digits (starting 6-59), denoting internally lightsealed for 3000 speed Type 37 film.	LC and 6 Digits
Film Types	Series 30 size rolls producing 2¾ x 3½ wallet-size pictures. 4-S light reducing filter required when using Type 37 film outdoors in bright light; also external lightseals required if camera serial number not preceded by "L". Type 38 color film can be used if camera is converted at Cambridge plant.		
Shutter Number System	Original Polaroid Land Camera Camera Numbers 2-9	EV numbers 11-18 Manual adjustments made as on Model 95 series cameras.	
Lens Type and Shutter Speeds	100mm focal length; f/8.8 to f/50; 1/25 to f/100; "B" setting for time exposures. See chart on last page for complete list of aperture/shutter speed combinations. Note that the smaller aperture at #3 (EV #12) is offset by the shutter speed.		
Flash	#281 cordless flashgun makes contact when mounted on camera's accessory shoe, and uses #5 and Press-25 bulbs; #250 cordless wink-light makes contact in same way, and its flasher uses AG-1 bulbs. Electronic flash cannot be used.		
Viewfinder	Long base, reflective type with reverse Galilean optical system.		
Rangefinder	None. Camera focuses by manually setting lens ring to estimated footage.		
Other	Cutter bar controls film release mechanism.	Latching cutter bar with independent film release switch under viewfinder housing.	
	Cable release socket and single tripod socket for vertical mounting. No guide rails when manufactured. ²		

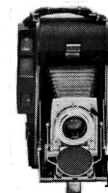
**Model 110 Series
Cameras
"Pathfinders"
(Black)**



MODEL
110



MODEL
110A



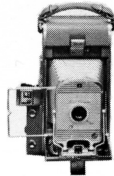
MODEL
110B

Years Manufactured	1952-1957	1957-1960	1960-1964
Serial Number	P and 6 Digits	P and 6 Digits LP and 6 Digits (Starting 5-59)	LP and 6 Digits
Film Types	Series 40 size rolls producing 3¼ x 4¼ pictures.		
	4-S light reducing filter required when using Type 47 film outdoors in bright light; no external light seals required.	4-S light reducing filter or f/90 lens cap adapter required when using Type 47 film outdoors in bright light; no external light seals required.	f/90 aperture provided in lens cap for Type 47 film; no external light seals required.
Lens	4-element Wollensak Raptar f/4.5 to f/32 127mm focal length.	4-element Rodenstock Ysarex or Enna f/4.7 to f/45; 127mm focal length.	
Shutter	Wollensak shutter with 9 speeds from 1 to 1/400 second; "Time" and "Bulb" settings.	Prontor shutter with 9 speeds from 1 to 1/300 second. "Bulb" setting and built-in 10-second self-timer on "V" position. 15 EV settings from EV-5-19. The f/90 aperture in lens cap (accessory for 110A) adds EV-20 and EV-21. Shutter speed/aperture interlock preserves single EV setting over wide range.	

Model 110 Series
(cont.)

Flash	#221 and #222 flashguns fit camera's bi-post connector, and use #5 and Press-25 bulbs (blue for color); Polaroid #251 wink-light makes contact same way, and flasher uses AG-1 bulbs (blue for color). Offer "M" and "X" synchronization for wire-filled bulbs and electronic flash.	#281 cordless flashgun makes contact when mounted on camera's accessory shoe, and uses #5 and Press-25 bulbs (blue for color); Polaroid #250 wink-light makes contact same way and flasher uses AG-1 bulbs (blue for color).	
Viewfinder	Optical eye-level finder with wire-frame press type finder mounted on shutter housing.	Separate viewing and ranging windows with a coupled rangefinder of superimposed image type. As camera is focused, viewfinder automatically adjusts for parallax; eye shifts to viewfinder window to align subject and compose picture.	Single window combines viewfinder and rangefinder. As camera is focused, projected viewfinder frame adjusts for parallax and field-of-view.
Rangefinder	Built-in coupled Kalart rangefinder of superimposed image type. Calculator on top of rangefinder converts original Polaroid shutter numbers to f/numbers and shutter speeds.		
Other	Same push button film release as Model 95. Same negative loading as Model 95. ¹	Toggle switch film release lever and drop-in loading. Latching cutter bar started with Model 110A-LP156926 (1959)	
	Cable release socket and tripod sockets for vertical and horizontal mounting (for vertical mounting, Models 110A and Model 110B require #261 Tripod Adapter).		
	No guide rails when manufactured. ²		Guide rails started with LP-217161 (8-62). ²

Manual Camera
Models 700 and 100

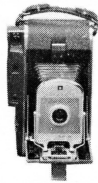


MODEL
700 (beige)

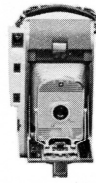
MODEL
100 (black)

Years Manufactured	1955-1957	1955-1956 Limited Production
Serial Numbers	A and 5 Digits	S and 4 Digits; BIS and 5 or 6 Digits; D and 4 Digits
Film Types	Same as Model 95 Series	Same as Model 95 Series
Shutter Number System	Same as Model 95A	Same as Model 95A
Lens Type and Shutter Speeds	Same as Models 95A, 95B	Same as Models 95A, 95B
Flash	Same as Models 95A, 95B	Same as Models 95A, 95B
Viewfinder	Same as Models 95A, 95B	Same as Models 95A, 95B
Rangefinder	Built-in non-coupled rangefinder of the superimposed image type.	Same as Models 95A, 95B
Other	Same as Models 95A, 95B except beige in color and gave 10-year guarantee. No guide rails when manufactured. ²	Same as Models 95A, 95B except black in color, and offers special long-life roller bearings and heavy duty shutter for industrial use. No guide rails when manufactured. ²

Models 150/800

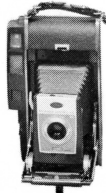


**MODEL
150 (medium grey)**

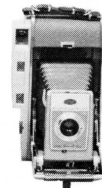


**MODEL
800 (beige)**

Years Manufactured	1957-1960		1957-1961	
Serial Numbers	K and 6 Digits LK and 6 Digits (starting 5-59), denoting internally lightsealed for 3000-speed Type 47 film.		A and 6 Digits LA and 6 Digits (starting 5-59), denoting internally lightsealed for 3000-speed Type 47 film.	
Film Types	Series 40 size rolls producing 3¼ x 4¼ pictures. 4-S light reducing filter required for outdoor pictures with Type 47 film; external lightseals required if serial number not preceded by letter "L".			
Shutter Number System	Same as Model 95B. See chart on last page.			
Lens and Shutter Speeds	Same as Model 95B. See chart on last page.			
Flash	Same as Series 80 except electronic flash connection on top of shutter housing provides zero delay on EV-13-17.			
Viewfinder	Same as Models 110A, 850.			
Rangefinder	Same as Models 110A, 850.			
Other	Latching cutter bar started with LK329321 (8-59)		Latching cutter bar started with LA310123 (7-59)	
	Cable release socket and tripod sockets for vertical and horizontal mounting (vertical mounting requires use of #261 Tripod Adapter)			
	No guide rails when manufactured. ²		Guide rails started with LA608036 (8-61). ² Specially selected shutter, helicoiled tripod insert, long-life roller bearings, 10-year guarantee.	



**MODEL
900 (dark grey)**

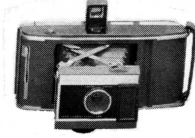


**MODEL
850 (beige)**

Models 850/900 FIRST POLAROID ELECTRIC EYE LAND CAMERAS

Years Manufactured	1960-1962		1961-1962	
Serial Numbers	E and 6 Digits		R and 6 Digits	
Film Types	All series 40 size rolls producing 3¼ x 4¼ pictures.			
Lens Type	Same as Models 95A, 95B, 700, 150, 160, 800.			
Shutter Speeds and Apertures	When used automatically, camera is set for proper film speed (range from 50 to 6000). Electric eye measures light and computes proper shutter speed/aperture combination over a continuously variable range from 1/42 to 1/600 second and from f/8.8 to f/82. Optional manually operated EV 10-22 and "B" time exposure settings supplied.			
Flash	Cordless #250 wink-light makes contact when mounted on camera's accessory shoe. With Type 47 film, indoor exposures are controlled automatically up to 8'-10'. For greater distances and for color pictures, flasher with AG-1B (blue) bulbs and manual EV settings are used. Separate electronic flash connection on shutter housing gives zero delay on EV 12-17. Conventional flashguns should not be used.			
Viewfinder	Same as Model 110B		Same as Models 150, 160, 800, 110A, 120	
Rangefinder	Same as Model 110B		Same as Models 150, 160, 800, 110A, 120	
Other	Internally lightsealed, equipped with latching cutter bars and tripod sockets for vertical and horizontal mounting.			
	Guide rails started with E414012 (9-61). ²		Less expensive version of Model 900, differing as described above. Guide rails started with R160248 (9-61). ²	

Models J66/J33 Electric Eye Cameras



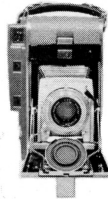
**MODEL
J66 (grey)**



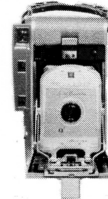
**MODEL
J33 (beige)**

Years Manufactured:	1961-1963	1961-1963
Serial Numbers	J and 6 Digits AJ and 6 Digits (2-62) BJ and 6 Digits	G and 6 Digits (one month only) F and 6 Digits (9-61); AF and 6 Digits (2-62)
Film Type	Type 47 black-and-white, 3¼ x 4¼ Type 48 color, 3¼ x 4¼, with #660 adapter kit.	Type 37 black-and-white 2¾ x 3½ Type 38 color, 2¾ x 3½, with #330 adapter kit.
Lens Type	Meniscus 114.5mm focal length.	Meniscus 101.6mm focal length.
Shutter Speeds and Apertures	Selenium cell-galvanometer system controls continuously variable shutter speed. Aperture determined by position of lighten/darken control. J, G and F (yellow dot) cameras have shutter speed from 1/12-1/720 second and aperture from f/19 to f/64 (EV range 12 to 22) with black-and-white film; 1/12-1/200 second and f/19-f/22 with color film (EV range 12½ to 17). AJ and AF (blue dot) and BJ (green dot) cameras have 1/8-1/480 second and f/14.5 to f/64 aperture with black-and-white (EV range 10½-21); 1/6-1/200 second and f/14.5 to f/22 with color (EV range 10½-17).	
Flash	Built-in flashgun uses AG-1 bulbs for all direct and bounce flash black-and-white pictures; manual setting of LD control gives correct exposure. J5 flasher in color adapter kit uses clear M-3 bulbs for color pictures; manual setting of lens ring to distance marking on color film shutter adapter sets aperture. Distance range 7' on yellow dot cameras; 10' on blue and green dot cameras. Electronic flash and conventional flashguns cannot be used.	
Rangefinder	Camera front offers two positions — fully extended for nearby subjects, partially extended for distant shots.	
Viewfinder	Pop-up projected-frame viewfinder.	Same as Model 80B.
Other	No accessories except #536 yellow filter and color adapter kits. Guide rails started with J271465 (8-61). ²	Low light indicators show when flash must be used. All cameras equipped with guide rails.

Other Models With Manual Controls



**MODEL 120
(Dark Grey)**



**MODEL 160
(Grey)**

Years Manufactured:	1961-1965	1962-1965
Serial Numbers:	A, B, C, D, or E and 6 Digits	A, B, C, or D and 6 Digits
	Manufactured in Japan, primarily for overseas distribution. Similar to Model 110B except uses Yashica f/4.7 127mm focal length lens; apertures extend to f/64 and f/90, (EV range 5-22), replacing f/90 lens cap aperture in Model 110B; uses Model 110A viewfinder/rangefinder. Guide rails started with B121318 (2-62). ²	Manufactured in Japan, primarily for overseas distribution. Identical to Model 800. No external lightseals required for Type 47 film. Guide rails started with B510270 (10-62). ²

SEE NEXT PAGE for important Notes 1 and 2; also aperture/shutter speed chart for cameras offering manual exposure settings.

Shutter Speeds and Lens Openings

Series 80 Cameras				Models 95A, 95B, The 700, 150, 160, & 800 Cameras				Model 95 Camera		
Shutter No. Model 80	Shutter No. (EV Scale) Model 80A, 80B	Lens Opening	Shutter Speed	Shutter No. Models 95A, The 700	Shutter No. (EV Scale) Models 95B, 150, 800	Lens Opening	Shutter Speed	Shutter No.	Lens Opening	Shutter Speed
2	11	f/ 8.8	1/25 sec.	1	10	f/ 8.8	1/12 sec.	1	f/11	1/8 sec.
3	12	f/12.5	1/25 sec.	2	11	f/ 8.8	1/25 sec.	2	f/11	1/15 sec.
4	13	f/ 8.8	1/100 sec.	3	12	f/ 8.8	1/50 sec.	3	f/11	1/30 sec.
5	14	f/12.5	1/100 sec.	4	13	f/ 8.8	1/100 sec.	4	f/11	1/60 sec.
6	15	f/17.5	1/100 sec.	5	14	f/12.5	1/100 sec.	5	f/16	1/60 sec.
7	16	f/25	1/100 sec.	6	15	f/17.5	1/100 sec.	6	f/22	1/60 sec.
8	17	f/35	1/100 sec.	7	16	f/25	1/100 sec.	7	f/32	1/60 sec.
9	18	f/50	1/100 sec.	8	17	f/35	1/100 sec.	8	f/45	1/60 sec.

¹ Negative spool clips on Models 95 and 110 should be replaced by an authorized repair station to assure successful use of current black-and-white and color films.

² Cameras not equipped with guide rails should have them installed on the focal plane by any authorized repair station to assure successful uses of all current film types.