

ZEISS
IKON



IKOFLEX

MODELS I AND II

2 1/4 x 2 1/4" TWIN-LENS REFLEX



DO YOU prefer ground-glass focusing, with its greater ease in composing the picture? Do you like the larger size miniature negative, with the square picture format? Do you want the best in modern reflex camera design and construction? All at the most reasonable price? . . . Then be sure to examine the Zeiss Ikon Ikoflex Cameras.

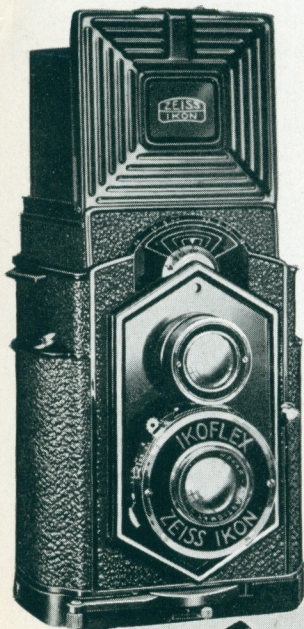
With either model, you see brilliantly and clearly exactly what you are taking—right side up and the same $2\frac{1}{4}'' \times 2\frac{1}{4}''$ size as the negative—both before and during the exposure. This is one of the advantages of the twin-lens reflex construction. Since, with this type of construction, the mirror is fixed in position and does not have to be lifted before operating the shutter, time-lag in the shutter operation is eliminated, giving greater surety of stopping fast action at the right moment.

Whether you select the moderately priced Ikoflex I or the more advanced Ikoflex II, you will secure a twin-lens reflex camera offering a combination of advanced features in operation and design not found in other cameras of this type.

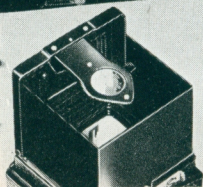
IKOFLEX I

Simplicity of operation is an outstanding feature of the Ikoflex I . . . The self-setting shutter eliminates an extra step when taking the picture . . . The single lever control of the finder and camera lenses gives quick and accurate focusing . . . The extra brilliant image on the focusing screen makes focusing easy under poor light conditions . . . The magnifying glass in the hood provides for extra fine focusing . . . And a scale automatically shows the depth of focus for each diaphragm setting at the distance on which the camera is focused.

Film is transported by the displacement of a lever at the bottom of the camera . . . An automatic counter, which resets when the camera is unloaded, shows the number of exposures made . . . Twelve exposures are made from each loading with standard eight-exposure $2\frac{1}{4}'' \times 3\frac{1}{4}''$ roll film, easily obtained anywhere . . . Equipped with the Novar F:4.5, $3\frac{1}{8}''$ (8 cm.) Lens in a Derval Shutter with speeds of $1/25$, $1/50$, and $1/100$ second, time, and bulb, the Ikoflex I offers quality performance at an attractive price.



Magnifying glass in hood for extra fine focusing.



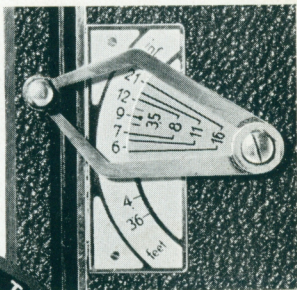
IKOFLEX II

The choice of the advanced reflex worker, the Ikoflex II indeed knows no limitation in quality performance under the most difficult conditions, for it is of typical Zeiss Ikon precision construction and equipped with the well-known Zeiss Tessar F:3.5, 3" (7.5 cm.) Lens in the Rapid Compur Shutter speeded from 1 to 1/500 second with time and bulb . . . Its large aperture Zeiss Teropar 3" (7.5 cm.) Finder Lens and special square collective lens viewing screen give an extraordinarily brilliant image and even illumination to the edges of the screen . . . A large magnifier inside the hood is easily snapped in position for extra fine focusing . . . Taking and finding lenses, mounted on the same panel, are easily focused by means of a new type, smooth working lever with quadrant, which automatically shows depth of focus for any given lens aperture at distance on which camera is focused . . . Direct focusing is possible to within three feet without supplementary lenses; with supplementary lenses, to eighteen inches.

Twelve exposures are made from each loading with standard eight-exposure 2¼" x 3¼" roll film, available anywhere . . . Loading is as easy as with any roll film camera, swinging back, hinged at bottom, opening so as to expose entire back and bottom of camera . . . Automatic film counter, visible from top of camera, shows number of exposures made and resets when camera is unloaded . . . Special pressure plate assures constantly accurate retention of film in the focal plane.

Beautifully finished, the body being a strong lightweight alloy, with all exposed metal chromium plated or enameled black, its perfect balance and ease of operation will astonish you . . . Be sure to examine the Ikoflex II before buying any camera, for, considering its high quality and precision construction, it is the most reasonably priced camera of its type.

A complete line of accessories (listed on last page) is available for each model.



Focusing lever automatically indicates diaphragm setting for required depth of focus.

Equipped with fast F:3.5, 7.5 cm (3") Zeiss Tessar Lens.





PRICE LIST

IKOFLEX I with Novar F:4.5 Lens, Derval Shutter	\$ 39.50
IKOFLEX II with Tessar F:3.5 Lens, Rapid Compur Shutter	110.00
Zeiss Yellow Filter L x 24 for Novar Lens	5.00
Zeiss Yellow Filter L x 28.5 for Tessar Lens	5.00
Sunshade 24 for Novar Lens	2.00
Sunshade 28.5 for Tessar Lens	2.00
Portrait lens set (2 Lenses) from 3 to 1½ feet, 995/41 and 995/16 for Ikoflex I	6.00
Portrait lens set (2 Lenses) from 3 to 1½ feet, 995/44 and 995/44 for Ikoflex II	6.00
Eveready Carrying Case	10.00
Leather Carrying Case	7.50
Leather strap for Camera	1.00

*(In ordering cases and straps, please
specify camera model.)*

CARL ZEISS, Inc.

485 Fifth Avenue

New York, N. Y.