



memory.

*Century Cameras*



# Century

# Cameras



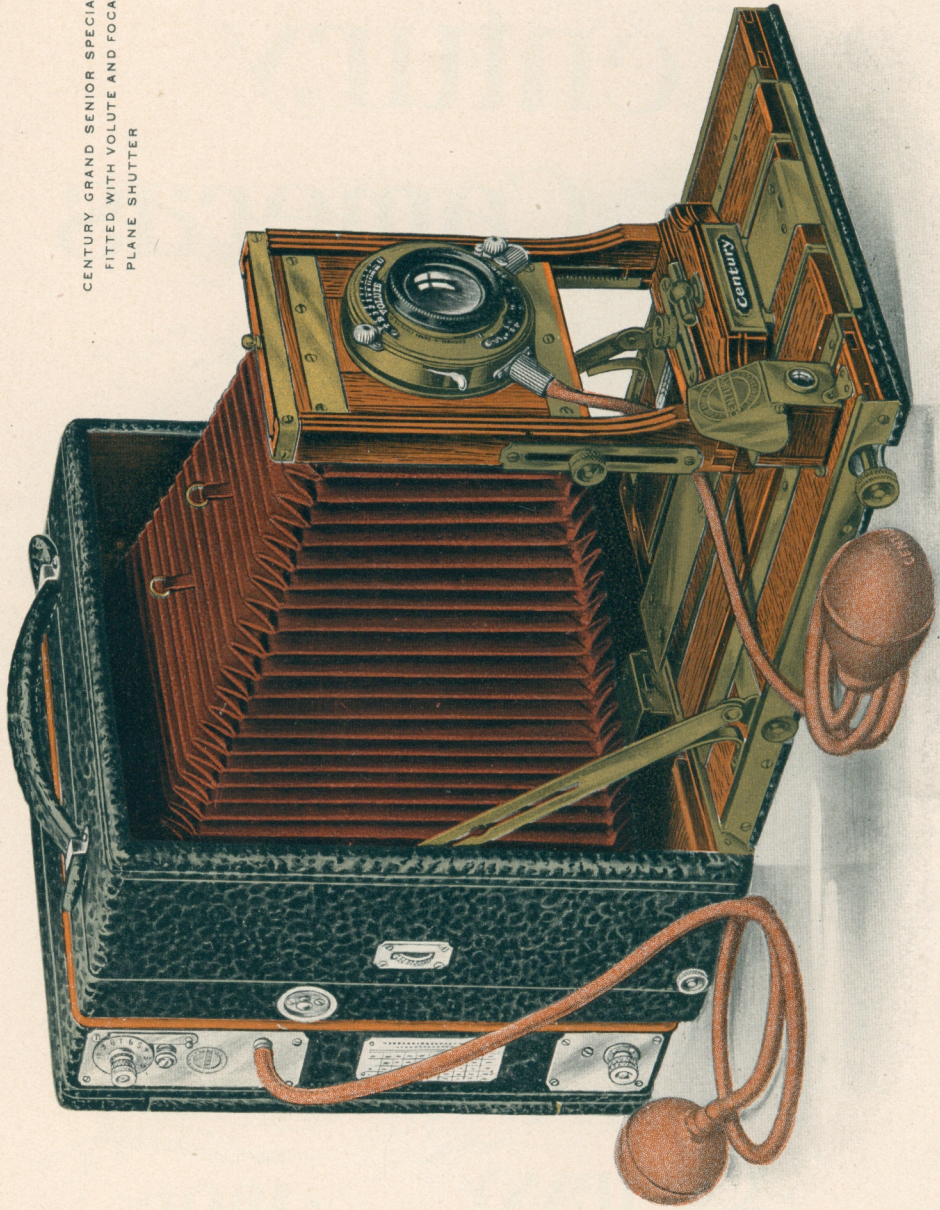
**CENTURY  
CAMERA  
COMPANY**

**· 1906 ·**

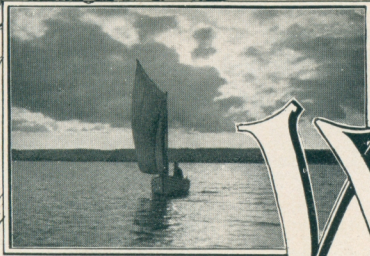
**ROCHESTER, N. Y.**



CENTURY GRAND SENIOR SPECIAL  
FITTED WITH VOLUTE AND FOCAL  
PLANE SHUTTER







NEGATIVE BY THOMAS J. CURREN

W

HO does not keep souvenirs to prize as the only visible recollections of memorable occasions? We cling to them as if they were the only connection between then and now; the link which, if lost, would let the occasion slip from our memory forever.

How we treasure the memories of other days, and yet how few of what were once memories — and cherished memories, too, have long ago faded — crowded out by new impressions. Times that we looked upon years ago, perhaps, as “red letter” days — events which we thought nothing would ever efface, have been worn smooth by the constant cataloguing of the new.

How much we value, not the objects that merely suggest, but photographs — actual scenes — of events that have given more than usual color to our life; of friends who were once daily companions; of strange happenings or accidents of which we were the startled and awed spectators. Nothing tells a story like a picture.

We can barely recall in our mind's eye little more than the dim outlines of journeys and vacations taken in the past, all of which have been brimful of pleasant memories and incidents, but when we take down the old scrapbooks begun years ago, and look at photograph after photograph, we live over again, not only vague recollections, but almost every detail or happening comes back as vivid and as fresh as if it took place yesterday.

A little book of my own making — that money could not replace, much less buy — contains photographs of a laughing, sunny-haired, three-year-old miss, from the time she was five days old. I tried to photograph her the afternoon of the very day she came to board with us, and had my camera nicely arranged in front of a window, only to meet with a sweet nurse's very decided no.



But on the fifth day I won out, then again at twelve days, and so on through the long-clothes age; from the creeping stage through the scampering one; sitting beneath her Christmas trees with her dolls, and again beside her birthday cakes — all she's ever had. All these are pictured there, and hardly a parent ever looks at my pictures but decides to begin at once a pictorial biography of their young hopefuls, and express regret for lost opportunities which they cannot now make up.

Not only is photography the most enjoyable of hobbies, but it is one that can be and often is, made a source of considerable pecuniary profit. It is the one pastime, the one sport, the one hobby, that can be made to pay for itself. All over the country there are men and women, who, through their beginning as amateur photographers are now devoting a large portion of their time to picture making for the purpose of illustrating magazines and newspapers, and for general advertising purposes.

Therefore, if you would know what real, lasting enjoyment is — enjoyment that begins with the taking of a picture, and increases through the developing of the plates to the making of the prints or lantern slides, and still further increases through the delight your pictures are to others for years afterward, as well as a biographic history of your own good times, *get a camera* — but be sure you get a “Century.” — AN AMATEUR.


The following pages illustrate and describe Century Cameras for 1906. With so large an assortment and wide range in prices we can meet the requirements of the novice, advanced amateur and expert photographer.

If you are in doubt regarding any point — write us. We will be glad of an opportunity to aid you in making a judicious selection of an outfit.

CENTURY CAMERA Co.







# Century Cameras

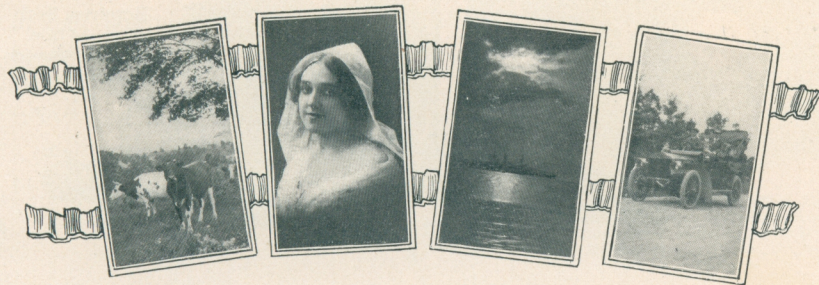
Embody more improvements and meritorious features than any other plate Cameras of either domestic or foreign manufacture, without a single exception. They possess that exclusiveness and individuality which go to make the difference between Century cameras and others—for when you see a camera with the name plate “ Century ” on the front, you are looking at an instrument made on honor.

Centurys are constructed of the best kiln dried mahogany and prepared long before it is actually required for use, to guard against any possibility of warping. In selecting the stock, we secure that which has the richest grain effect, and finish it so as to preserve both the beautiful grain and also the natural color of the wood. All corners are gracefully rounded and every Century camera, from the lowest priced to the most expensive, is not merely nailed together and then covered with leather—it is dovetailed. To dovetail is a more expensive way to manufacture—but to maintain Century Quality nothing is unimportant.

## 22 Years Experience has Produced Century Quality

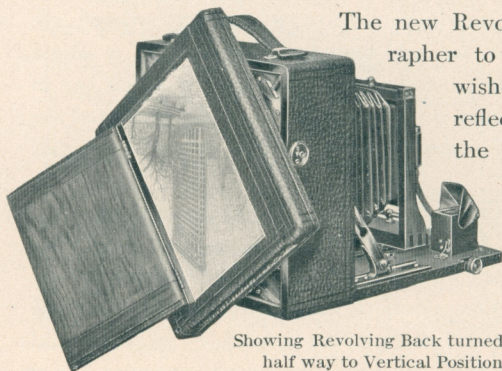
Century Cameras contain the good points which twenty-two years of experience have developed and suggested, together with new features and exclusive ideas covered by letters patent, all of which make our entire line of cameras thoroughly distinctive.

Our new factory is equipped with brass and wood-working machinery of the latest type. The employment of skilled mechanics in every department—men trained by years of experience in camera making—the use of only such raw materials as are first-class in every respect—with facilities so superior, and the system of manufacture so thorough, we are enabled to attain in our finished product the nearest possible approach to absolute perfection.





## The Century Revolving Back



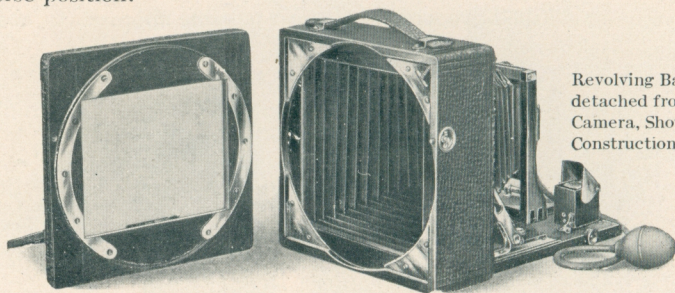
Showing Revolving Back turned half way to Vertical Position

The new Revolving Back enables the photographer to decide instantly, just how he wishes to make the picture, as the reflected image can be viewed with the ground glass focusing screen in either a vertical or horizontal position, without detaching the back. The plate is changed from a horizontal to a vertical position by simply pressing a spring catch at the side and revolving the back; you do not

disturb the position of the camera or any part of it.

Photographic plates are usually longer one way than the other, and it has been the general custom to build cameras so that the long side of the plate will be horizontal with the view. When photographing high buildings, or when making portraits, or in fact any perpendicular subject, the length of the picture should be up and down, the short side acting as a base.

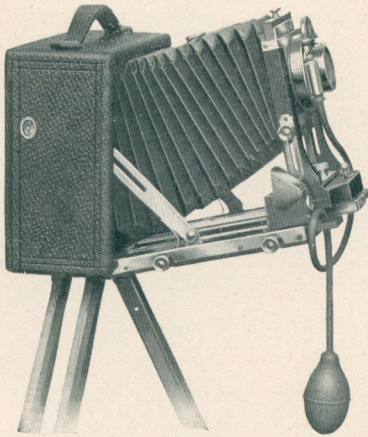
To make an upright picture with an ordinary camera, by which we mean one without reversible back, the *entire instrument* must be turned over on its side, and in this position the various adjustments are not as readily manipulated. Even with the improved form of hand camera, made with a reversing back, it is necessary, when changing the plate from a horizontal to a vertical position, to *detach the entire back* either by releasing springs or pressing buttons, then turn the back over and again adjust it to the camera in the reverse position.



Revolving Back detached from Camera, Showing Construction



## The Swing-Back—Its Use



Century Grand, Showing Swing-Bed

the plate can be placed parallel with the subject, and straight lines secured.

The purpose of a swing-back or swing bed is to keep the plate perpendicular, or parallel with the object photographed. To include the top of a tall building or church spire, or to secure more of a subject than can be obtained with the camera level, it is often necessary to tilt it. Under such conditions, with a camera not having a swing-back or swing bed, the lines in the photograph will converge at the top, because of the plate being at an angle with the subject instead of parallel to it. If the back of the Camera is made to "swing" independently, then even though the Camera is not level,

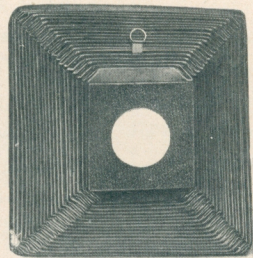
## Advantages of the Century Swing-Bed

To manipulate an ordinary Swing-Back, it is necessary to adjust the tripod legs, in order to keep the plate perpendicular. But this is not always convenient—in fact, impossible under certain conditions. We have perfected an adjustment which avoids the necessity of any change in the position of the tripod, and this feature is—the Century Swing-Bed.

It is easier than the old style swing-back to manipulate, and when you level the tripod top and attach the camera, the plate always remains perpendicular, whether the swing-bed is used or not.

All Century swings having rack and pinion movement are fitted with our patent swing back lock, which holds the back absolutely rigid in any desired position by simply pushing the milled head in flush with the bed—another exclusive Century idea.

As a rule, landscape pictures are made with a small diaphragm, or stop in the lens for the purpose of bringing into sharp focus both objects



So perfect is every fold, that a 20 inch Bellows, when closed measures only one inch in thickness



in the foreground as well as distant points. Under certain conditions the use of a small diaphragm would require an exposure too long to prevent movement of the objects—swaying trees, etc. As there are usually no straight lines in a landscape, by tilting the swing-back you can bring both near and distant objects into focus while using a large stop.

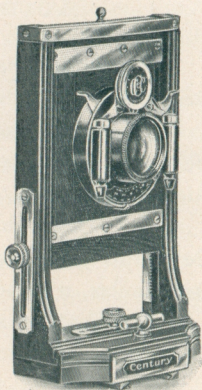
A swing-bed is not necessary for hand work pure and simple, but this feature as applied to Century cameras does not increase either the weight or bulk. It is an adjustment that will be found very convenient when making tripod exposures, and under certain conditions it is practically indispensable.

### Value of a Rising and Sliding Front

The lens when occupying its normal position on a Camera is exactly in the centre of the plate. The purpose of a Rising and Falling Front is to shift the lens above or below the centre, and thus vary the relative amount of sky and foreground, on which depends very largely the artistic effect of the picture. Moving the lens upward will give more sky, and when dropped below the centre the amount of foreground is increased.

All Century cameras have Rising and Falling Front, and the maximum amount of movement is given. In Models 40 to 46 the adjustment is controlled by a milled head, while all the Century Grand Cameras have a rack and pinion movement with patent automatic lock, which holds the lens in any desired position without the usual binding screw—another original Century feature.

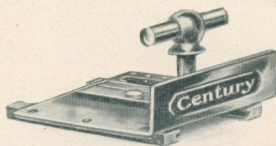
All Century Grand cameras, also Model 46, and Petite No. 3, have the front arranged to move horizontally as well as vertically. This is called a Double Sliding Front. The horizontal movement permits adjusting the lens from side to side, thus changing the angle of view, or, if the camera is not made with a reversing back, this movement takes the place of regular rising and falling front when the instrument is reversed for vertical pictures.



Double Sliding Front  
with Rack and Pinion  
adjustment



## A Front Clamp that Never Slips



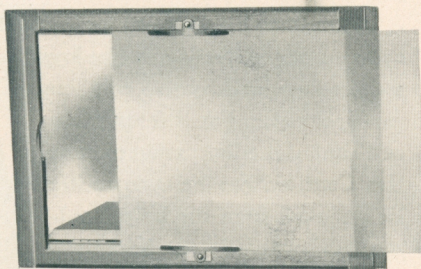
No danger of the front slipping with a Century Automatic Clamp.

In place of the old style clamp hook for holding the front in position, after focusing, all Century cameras are fitted with our patent Automatic Clamp—a novel device that automatically clamps and securely holds at any point on the bed, the front with lens and shutter. There is absolutely no chance of the front slipping after once adjusting the focus, as the “shoe” grips the brass bed plate its entire length.

When the T shaped bar at the base of front is straight across the bed, or parallel with the name plate, the clamp is set, and the front cannot move. To release the clamp it is only necessary to turn the bar a trifle either to the right or left, when the front with lens can readily be moved forward or back. The instant you release the bar it clamps the front automatically, and clamps it securely—no slipping or sliding to throw the picture out of focus. This clamp is the most effective device ever invented for the purpose. It is another of our exclusive and very practical features—another evidence of Century Quality.

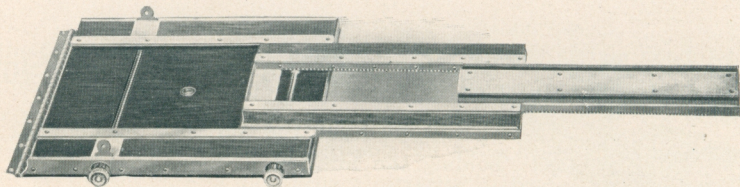
## A Focusing Screen that is Always in Register

The method of fitting the ground glass focusing screen in Century cameras is entirely new, as it provides for a variation in the thickness of the ground glass. If the original screen is ever broken, it can be replaced without a single tool in ten seconds, actual time, and no matter how thin or thick the glass, it will automatically register, and occupy the same plane as the sensitive plate. No other plate or film camera has this feature. It is exclusive with the Century, and helps to make Century Quality.



Method of removing and replacing Ground Glass. Not a tool necessary.





## Century Patent Triple Section Bed

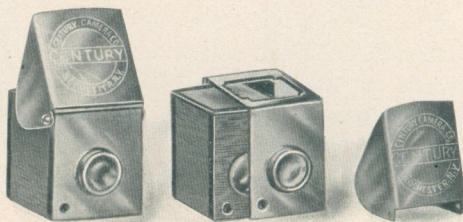
Extended by a Single Pinion

Rigidity!—that's one of the many important points we have accomplished in the construction of our extension beds.

The Century triple Extension Beds are marvels of mechanical ingenuity. A single pinion at the side moves each section of the bed forward or back, and when pushed in acts as a lock, holding the bed absolutely firm and rigid whether it is fully or only partly racked out. By turning the milled head the section carrying lens and shutter moves first, and when this section is fully extended it locks automatically into the second section, and at the same time begins to carry it forward by means of a continuous rack. Our method of fitting the front section of the bed is entirely new, and an original Century idea. It gives an exceptionally easy and smooth movement, as the same amount of friction exists whether the front section is fully or only partly extended. Special construction of the wood and metal parts, makes the bed capable of resisting atmospheric changes to a remarkable degree. Each section is bound with metal to prevent any possibility of lost motion, and brass guides on the top of the bed insure strength and perfect rigidity.

## Century Three Lens Brilliant Finders

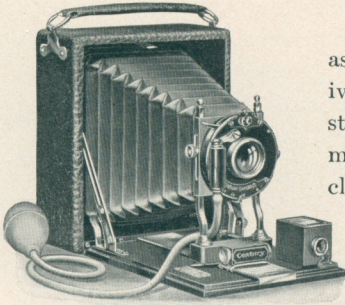
Century Finders are of a special design, far superior to the ordinary type, as three lenses are employed. In place of simply one lens at the top we use two, and by this combination secure an image which is most brilliant and perfect. For the purpose of cleaning the lenses and mirror, the Century Finder can readily be removed from the brass binding, and as easily put back into place—a feature not possible with any other finder in the market. Century Quality again.



A "Century" finder can easily be taken apart for cleaning—others cannot.



## Petite Century No. 1



The original Petite Century—now known as Model No. 2—has met with such an extensive sale that we have designed several new styles, all of which possess features and adjustments that place the entire series of Petites in a class by themselves.

Those who prefer the non-reversible back type of camera will find the Petite Centurys wonderful little instruments in every respect—perfect in all adjustments

and so easy to operate that even a novice can readily make good pictures.

The No. 1 Petite—the “Baby” of the Centurys—is an exceedingly compact camera, the  $3\frac{1}{4} \times 4\frac{1}{4}$  measuring  $5\frac{1}{4} \times 4\frac{1}{4} \times 1\frac{1}{2}$  inches, and its weight is only 16 ounces. The red bellows, black leather covering, dark shutter and nickel trimmings, give the camera a most attractive appearance, to say nothing of its value as a picture taker.

The front adjusts for regulating sky and foreground, and a brilliant finder is attached to the bed. An automatic clamp holds the front in any position—no set screws necessary.

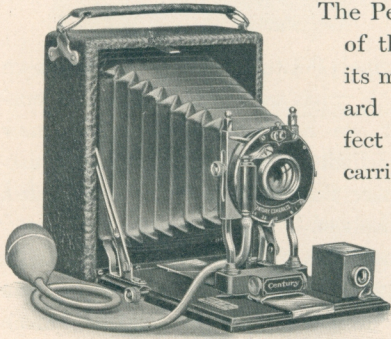
The Lens is a Century Rapid Rectilinear, of just the right focus to give the most pleasing perspective. It has a flat field, fine depth of focus and good covering power, and is fitted with the No. 3 Automatic shutter. A new feature is a separate lever for throwing back the shutter leaves when focusing. The shutter is described on page 38. A ground glass screen at the back allows the full size image to be seen for focusing when desired. The plate holder is a new model with spring bar, and holds two plates. The No. 1 Petite Century will also carry the film pack adapter.

### PRICE

Petite Century No. 1, with one Double Plate Holder,	$3\frac{1}{4} \times 4\frac{1}{4}$	$4 \times 5$
Extra Double Plate Holders, each,	\$10.50	\$13.00
	1.00	1.00



## Petite Century No. 2



The Petite Century No. 2 is the original model of the Petite series, and its popularity attests its merits. It is a compact camera of standard quality—so dainty in design and so perfect in construction that it may readily be carried in the pocket.

The Petite Century No. 2 has all the good points found in Model 1, and in addition a rack and pinion for focusing. Cartridge roll film as well as the film pack and glass plates may be used with Model 2—a feature not possessed by any other camera of a similar type on the market, excepting our No. 3 Petite. The film holder fits so neatly that it is practically a part of the camera, and perfectly interchangeable with the plate holder.

The front with automatic clamp is adjustable for sky and foreground. A brilliant finder for locating the image is attached to the bed. The Lens is a Century Rapid Rectilinear, having fine depth of focus, good definition, a flat field and possesses ample speed for instantaneous exposures. The No. 3 Automatic shutter operates for time, instantaneous and bulb exposures. It also has a lever for throwing back the shutter leaves when focusing. Described in detail on page 38. A ground glass screen at the back permits the full sized image to be seen when focusing.

The Petite Century No. 2 is made throughout of fine mahogany, handsomely polished, the body being covered with genuine cowhide leather. The  $3\frac{1}{4} \times 4\frac{1}{4}$  measures  $4\frac{3}{8} \times 5\frac{1}{4} \times 1\frac{7}{8}$  inches. Weight, 17 ounces. The  $4 \times 5$  measures  $5\frac{1}{8} \times 6 \times 2\frac{1}{8}$  inches and weighs 24 ounces.

### PRICE

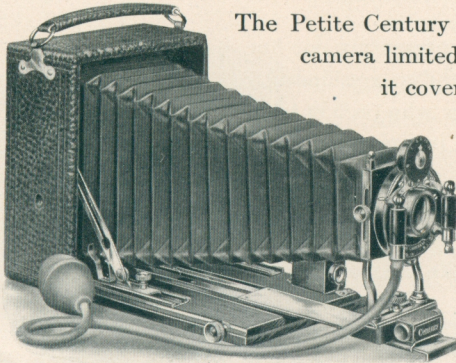
Petite Century No. 2, with one Double	$3\frac{1}{4} \times 4\frac{1}{4}$	$4 \times 5$	
Plate Holder, . . . . .	\$12.50	\$15.00	
Extra Double Plate Holders, each, . . . . .	1.00	1.00	



NEGATIVE BY C. J. WRIGHT



## Petite Century No. 3



The Petite Century No. 3 is not simply a "snap shot" camera limited in its field of work, but the scope it covers is a wide one. For instantaneous and time exposures, for landscape and interiors, for portraits and groups, for flashlight pictures— for all these and more too, it is admirably adapted.

Real pictures do not result from simply making snap shots at random. Many times it is desirable to see the full size image reflected on the ground glass to compose and arrange the picture. This is possible with the Petite Century No. 3, whether using plates or film, and is a great advantage.

The No. 3 Petite has our automatic front clamp, rack and pinion for delicate focusing, brilliant finder—in fact every adjustment and advantage possessed by the preceding models, and in addition

- A Rapid Symmetrical Lens.
- A No. 1 Automatic Shutter (for description see page 38).
- A Double Sliding Front.
- A Swing Bed and Swing Back.
- A Self-Locking Pinion.
- A Bellows of sufficient length to use the back combination of Symmetrical Lens alone.

Never before has so compact a camera been made, containing the features enumerated above, at the same time being perfectly adapted for glass plates, the film pack and cartridge roll film.

The Petite No. 3 is covered with handsome seal grain leather. The bed is hand polished, and has nickel trimmings. It speaks for itself and will at once appeal to all desiring a camera for general work in the most compact form possible.

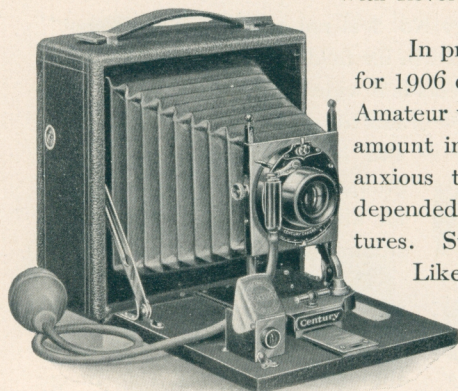
### PRICE

	$3\frac{1}{4} \times 4\frac{1}{4}$	$4 \times 5$
Petite Century No 3, with one Double Plate Holder,	\$20.00	\$23.00
Extra Double Plate Holders, each,	1.00	1.00



# Century Camera, Model 40

With Revolving Back



In presenting our line of Century Cameras for 1906 due consideration has been given the Amateur who prefers to invest only a moderate amount in an equipment, but nevertheless is anxious to possess a camera that can be depended on for the production of good pictures. Such a camera is Century Model 40.

Like the more expensive models, it is made throughout of mahogany, with every corner dovetailed, and possesses adjustments which render it available for both hand and tripod work.

The Lens is our Century Rapid Rectilinear, a most excellent type, possessing plenty of speed, good covering power, and well adapted for general amateur work. It is fitted with No. 3 Automatic Shutter, operating for instantaneous, time and bulb exposures. A lever at the side, when adjusted, throws back the leaves for focusing—a new and exclusive Century feature.

The Lens and Shutter are fully described on pages 36 to 39.

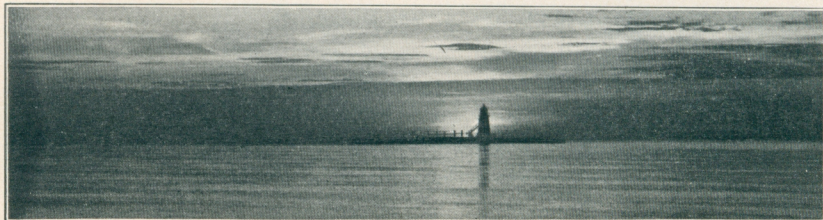
For the amateur who is just starting his photographic career, we can heartily recommend Model 40 as a camera that will fulfill every requirement. Glass Plates, Film Pack and Cartridge Roll Holder may all be used.

## PRICE

Including one Double Plate Holder and Carrying Case with handle

		3½ x 4½	4 x 5	5 x 7
Century Camera, Model 40,	.	\$13.00*	\$15.00	\$20.00
Extra Double Plate Holders, each,	.	1.00	1.00	1.25

\*Not furnished with Revolving Back, but has Reversible Back.

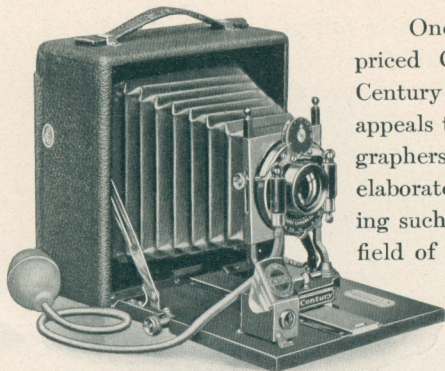


NEGATIVE BY ANDREW EMERINE, JR.



# Century Camera, Model 41

With Revolving Back



One of the most popular of moderate priced Cameras, and deservedly so, is the Century Model 41. It is a style that strongly appeals to a large number of Amateur Photographers — those who do not care for the more elaborate cameras, yet desire an outfit possessing such adjustments as will permit the varied field of work usually attempted by ambitious amateurs.

The general design of Century Model 41 is similar to Model 40, but it has in addition a fine rack and pinion, for accurate focusing, and a more expensive type of shutter — the No. 4 Double Valve being substituted for the No. 3. The shutter has triplicate movement, and in addition is fitted with a lever for throwing back the leaves when focusing — a new and exclusive Century feature. The Lens is our Century Rapid Rectilinear. Both lens and shutter are described on pages 36 to 39.

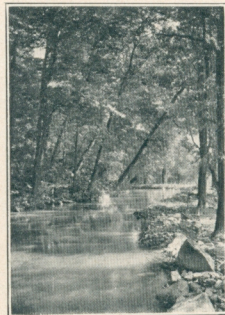
The back revolves for upright pictures (see page 6), the front adjusts for regulating sky and foreground and a brilliant finder with hood is attached to the bed. An Automatic clamp holds the front with lens at any desired point on the bed, an easier and more satisfactory method of adjustment than the old style clamp hook. The 5 x 7 is made with mahogany front in place of brass.

## PRICE

Including one Double Plate Holder and Sole Leather Carrying Case.

	3½ x 4½	4 x 5	5 x 7
Century Camera, Model 41,	\$17.00*	\$19.00	\$25.00
Extra Double Plate Holders, each,	1.00	1.00	1.25

\*Not furnished with Revolving Back, but has Reversible Back.



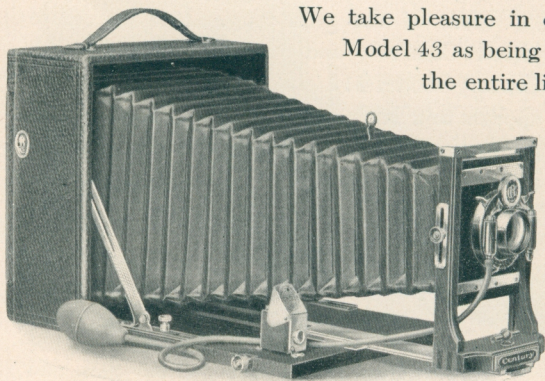
NEGATIVE BY D. SCOTT SCHENCK, M. D.





# Century Camera, Model 43

With Revolving Back



We take pleasure in calling especial attention to Model 43 as being the most popular camera in the entire line of medium priced outfits.

The wide field of work which can be accomplished with this instrument makes it a particularly attractive style for advanced amateur and professional photographers.

Model 43 contains every adjustment and all the meritorious features

possessed by the less expensive types, including Revolving Back (see page 6), rising and falling front, automatic bed clamp, rack and pinion, etc. In addition, the camera is fitted with a swing back and swing bed, a Century Rapid Symmetrical Lens, and an extra long bellows of sufficient length so the rear combination of the lens can be used alone, for the purpose of making distant objects appear larger in the picture—a feature every experienced amateur will appreciate. The swing back is a useful adjustment and a decided advantage when photographing buildings, church spires, and similar subjects.

The Shutter is our highest type—the No. 1 Century Automatic, operating for instantaneous, time and bulb exposures, with either finger or pneumatic release. By adjusting a lever at the side, the shutter leaves can be thrown aside for focusing. Both lens and shutter are fully described on pages 36-39.

We recommend Model 43 as a particularly desirable camera at moderate cost, and an instrument capable of producing most excellent results. The 4 x 5 size has brass front instead of wood.

## PRICE

Including one Double Plate Holder and Sole Leather Carrying Case, with handle

	3½ x 4½	4 x 5	5 x 7	6½ x 8½	8 x 10
Century Camera, Model 43, . . .	\$22.00*	\$25.00	\$33.00	\$50.00	\$62.00*
Extra Double Plate Holders, each, . . .	1.00	1.00	1.25	1.75	2.00

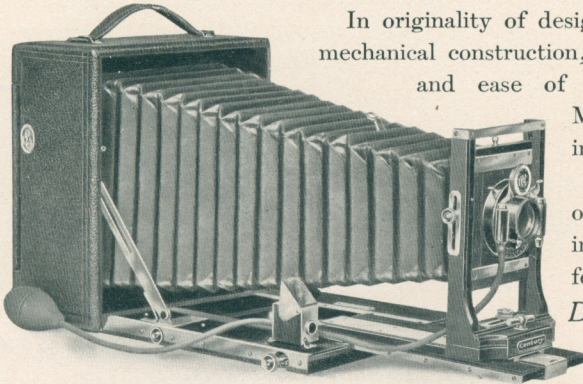
\*Not furnished with Revolving Back, but has regular Reversible Back.





# Century Camera, Model 46

With Revolving Back



In originality of design, perfection of detail, mechanical construction, complete adjustments, and ease of manipulation, Century Model 46 stands pre-eminent.

It is the first camera of the series in which we introduce the following features:

*Double section brass bound telescopic bed.*

*Patent Pinion Lock.*

*Swing Back and Bed, operated with Rack and Pinion.*

Our method of constructing the bed insures a smooth movement for focusing and provides an absolutely rigid support for the lens, even when the bellows is extended to its full capacity. The focusing pinion, when pushed in flush with the bed securely locks the second section in any desired position. The extra length of bellows admits of copying and other close work, such as large heads, etc.

Model 46 is fitted with the Centar Lens, Series II, and No. 1 Automatic Shutter, with triplicate movement and Separate Lever for focusing. The back combination of the Centar Lens, when used alone, forms a most excellent type of long focus single achromatic lens—of great value for photographing distant objects, mountain scenery, etc. Lens and Shutter are described on pages 36 to 39. We also furnish this popular model fitted with various high grade Anastigmat Lenses as quoted below.

## PRICE

Including One Double Plate Holder and Sole Leather Carrying Case with handle

	4x5	5x7
Century Camera, Model 46, with Centar Lens, Series II,	\$32.00	\$ 40.00
With B. & L. Plastigmat Lens, . . . . .	69.70	84.90
With Zeiss Tessar 11 B Lens, . . . . .	69.70	96.40
With Zeiss Protar VII A Lens, . . . . .	89.20	111.90
Extra Double Plate Holders, each, . . . . .	1.00	1.25



# The Century Grand

With Revolving Back

The Century Grand is a masterpiece of the Camera maker's art, and a worthy leader of the Century series. It is a superb instrument from every point of view, and results from careful study on the part of those who have been engaged for years in designing cameras of the highest type. It contains more real improvements and exclusive features than any other folding plate camera in the market, with the exception of the Century Grand Senior. The general design, solid construction, rigidity of every part, portability, easy means of manipulating all adjustments, and fine finish of both wood and brass work are noticeable features.

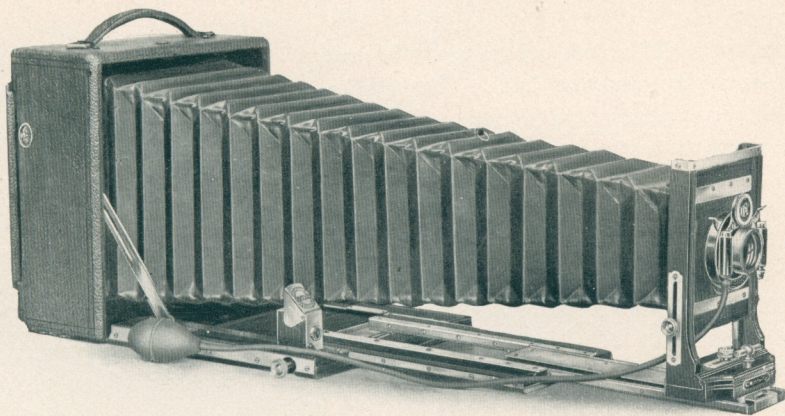
The Century Grand is built throughout of mahogany—selected and kiln dried, with all joints dovetailed. The outside case is handsomely covered with fine black special grain cowhide, and has a padded handle for carrying. The metal work is polished and lacquered in a rich gold color. The bellows is made from red leather lined with rubber cloth, and attached by rubber cement, insuring elasticity and rendering it absolutely light-proof.

The triple section telescopic bed is made on an entirely new principle, and so arranged that the different sections operate by a single pinion at the side. When pushed in this pinion acts as a lock, holding the different sections of the bed absolutely firm and rigid at any desired point. The section carrying lens and shutter moves first by turning the milled head, and when fully extended locks automatically into, and at the same time carries forward the second section by means of a continuous rack. A new method is employed in fitting the first section of the bed giving an exceptionally easy and smooth movement when focusing, as the same amount of friction exists whether the first section of the bed is entirely or only partly extended.



Each of the three sections is bound with metal to prevent any possibility of lost motion, and brass guides on top of the bed serve to insure strength and perfect rigidity—a feature which will appeal very strongly to all photographers. The bed is attached to the case by a brass piano hinge extending the full width, adding strength and beauty to the entire equipment.





The Century Grand, Fully Extended

The front has both vertical and horizontal movements, the former being adjusted by a fine rack and pinion. It is held securely at any desired point on the bed by an automatic clamp.

The Century Grand is regularly equipped with Centar Lens, Series II. This lens is a symmetrical type, perfectly achromatic, rectilinear, and of superior covering power and definition. It is admirably adapted for portraits, groups, architectural subjects, marine views, landscapes, copying, flashlight pictures, etc.—in fact, the Centar Lens is designed for general photography.

The front and back combinations may be used alone as long focus objectives. In this form they are particularly well adapted for distant views, mountain scenery, and all remote subjects, where extreme speed is not essential. The focal length of either the front or back lens when used alone is double that of the complete lens, and the size of the image is therefore about twice that given by the compound lens.

We also furnish the Century Grand fitted with various types of high grade Anastigmat Lenses as quoted on page 20.

Our latest and best Shutter—the No. 1 Automatic—is fitted to the Century Grand. Its many attractive features and advantages will be appreciated by both amateur and professional photographers. The Automatic operates for instantaneous, time and bulb exposures. The mechanism is so constructed that in moving to terminate an exposure it will automatically set itself for the next exposure. There can be no question as to “whether the



Shutter is set"—it is always ready for instant use, being released and set by simply pressing the bulb. The diaphragms are marked in accordance with the standard U. S. system. Both Lens and Shutter are fully described on pages 36 to 39.

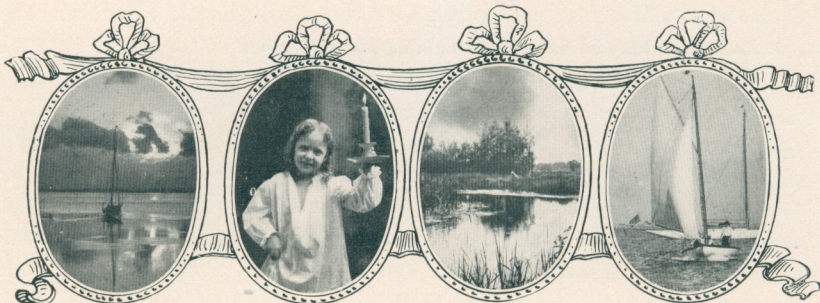
The Century Grand is enclosed in a handsome sole leather carrying case, plush lined, having a compartment at one end to accommodate five extra plate holders. We have spared no expense to make the Century Grand absolutely the best camera in every detail of construction ever offered, and the success of our efforts is attested by the enviable reputation this instrument has made for itself among the foremost photographers in a short space of time. Read description of the Revolving Back, page 6, an exclusive Century feature.

Our claims for superiority in design, general construction and numerous exclusive features, are all justified—as an examination will prove. The Century Grand speaks for itself, and stands to-day as a representative Camera of the highest possible type.

### PRICE

Including one Double Plate Holder and handsome Plush Lined Sole Leather Case

	4 x 5	5 x 7	6½ x 8½
Century Grand, with Centar Lens, Series II,	\$40.00	\$ 50.00	\$ 67.00
With B. & L. Plastigmat Lens, . . . .	77.70	94.90	133.70
With Zeiss-Tessar 11 B Lens, . . . .	77.70	106.40	177.20
With Zeiss Protar VII A Lens, . . . .	97.20	121.90	153.20
Extra Double Plate Holders, each, . . .	1.00	1.25	1.75

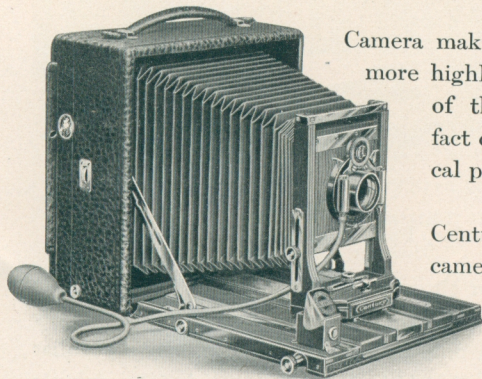




# Century Grand Senior

With Revolving Back

Patented March 29th, 1904



Century Grand Senior Partly Extended

Camera making as a fine art has never been more highly exemplified than by the product of the Century Camera Company — a fact conceded by experienced and critical photographers.

One of the latest additions to the Century line is the Grand Senior — a camera that has added materially to our reputation for progressiveness and originality. No illustration or description can do justice to, or even portray in a small measure, the inventive genius, skill in designing, perfection and simplification of

adjustments embodied in its manufacture, culminating in the finest camera ever placed on the market.

The Century Grand Senior, while differing in construction from the regular Grand, contains all the features which have made that camera so popular, and in addition has —

*Detachable Side Arms, for dropping bed.*

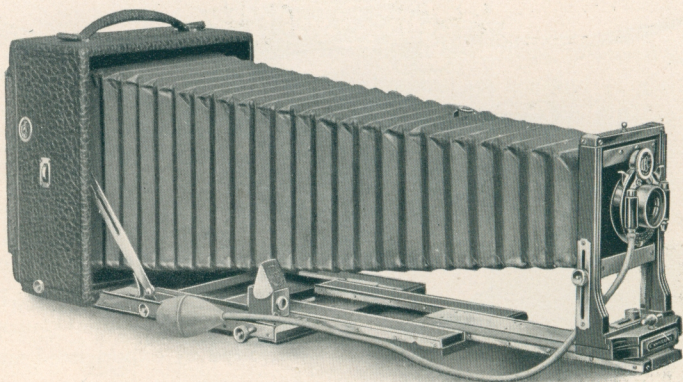
*Supplementary Bed, for using extreme Wide Angle Lens, Rack and Pinion Movement.*

*Vertical Central Swing Back.*

*Horizontal Side Swing, for correcting violent perspective lines.*

In connection with the Century Swing Bed, the vertical and horizontal Swing Backs give the greatest range and adjustment ever attained in a hand camera — and, note this: the Grand Senior is the only cycle type of camera having Double swing back and swing bed, free from all complicated parts and so neatly adapted as to add practically nothing to either the bulk or weight.





### Century Grand Senior, Fully Extended

The telescopic bed is made in three sections, all operated by a single pinion, with the Century pinion lock. The same amount of friction exists whether the front section is fully or only partly extended, and by a peculiar arrangement of the wood and metal parts, the bed resists atmospheric changes to a remarkable degree.

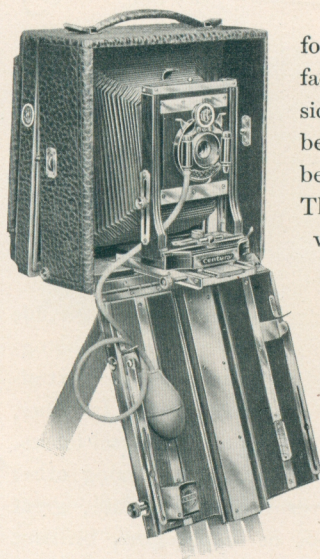
The section carrying lens and shutter moves first by turning the milled head, and when fully extended locks automatically into, and at the same time carries forward the second section by means of a continuous rack. Each of the three sections is bound with metal to prevent any possibility of lost motion, and brass guides on top of the bed serve to insure strength and perfect rigidity — a feature which will appeal very strongly to all photographers. The bed is attached to the case by a piano hinge extending the full width, adding strength and beauty to the entire equipment.

The front has both vertical and horizontal movements, the former being governed by a fine rack and self-locking pinion. It is held securely at any desired point on the bed by our new automatic clamp.

The Grand Senior is regularly equipped with Centar Lens, Series II. This is a lens of the symmetrical type, perfectly achromatic, rectilinear and of superior covering power and definition. Either the front or back combination can be used alone for distant views, mountain scenery, etc. The focus is double that of the compound lens. It is fully described on pages 36 and 37.

We also furnish the Grand Senior fitted with various high grade Anastigmat Lenses as quoted on page 23.





Showing Supplementary Bed attached for Wide Angle Lens

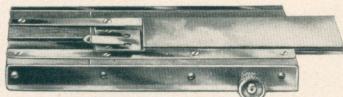
By means of a supplementary bed, very short focus or wide angle lenses can be used with equal facility. The main bed drops by detaching the side arms, and the supplementary bed, which can be instantly adjusted, supports the front. This bed also has rack and pinion for accurate focusing. The illustration at the left shows the Grand Senior with the supplementary bed and wide angle lens attached.

Our No. 1 Automatic Shutter is fitted to the Century Grand Senior, and its many attractive features will be appreciated by both amateur and professional photographers. See page 38 for description.

The small illustration below shows the supplementary bed, with rack and pinion movement, which takes the place of the main bed, supporting the front, when extreme wide angle lenses are employed.

locks automatically in place, and cannot become accidentally detached. The horizontal and vertical swings are available for both regular and wide angle lenses.

The Wide Angle Bed, when adjusted,



Supplementary Bed for Wide Angle Lenses

As previously stated, the Century Grand Senior must be seen to fully appreciate its many meritorious and exclusive features. Our claims for superiority—in design, in construction, in adjustments, in finish, in optical and mechanical excellence—will be fully substantiated by a critical examination.

### PRICE

Including one Double Plate Holder and handsome Plush Lined Sole Leather Case

	4 x 5	5 x 7	6½ x 8½
Century Grand Senior, with Centar Lens, Series II,	\$ 53.00	\$ 63.00	\$ 80.00
With B. & L. Plastigmat Lens,	90.70	107.90	146.70
With Zeiss Tessar Lens,	90.70	119.40	190.20
With Zeiss Protar VII A Lens,	110.20	134.90	166.20
Extra Double Plate Holders, each,	1.00	1.25	1.75





# Century Grand and Grand Senior Specials

The Acme of Perfection

The Century Grand and Grand Senior Specials are the regular Grand Cameras as described on pages 18 to 23, fitted with either a Bausch & Lomb Plastigmat Lens, Zeiss Tessar, Zeiss Convertible Protar VII A, Goerz Series III or Goerz Type B, as may be preferred, and No. 1 Automatic or B. & L. Volute Shutter.

Anastigmat Lenses represent the highest development in photographic optics. They are the ideal instruments for amateur and professional photographers, being adapted for every conceivable photographic purpose—Portraiture, Groups, Landscapes, Animal Life, Architectural Subjects, Interiors, Copying, Enlarging, Process Work, etc.—in fact, they are universal lenses. The optical properties introduced in their manufacture, give among other advantages extreme speed, minute definition over the entire plate, great covering power, without the use of small stops or diaphragms, brilliant illumination and remarkable depth of focus. The reflected image of an Anastigmat, even with the lens at full opening, possesses a sharpness and noticeable “crispness” that is impossible to produce with the ordinary lens.

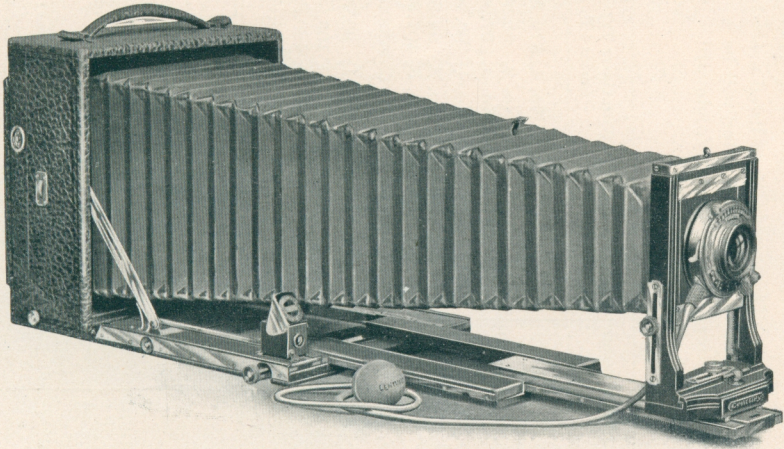
The possession of an Anastigmat Lens broadens the photographer's opportunities. The most rapid work can be accomplished with Focal Plane and other high speed shutters. Instantaneous exposures are no longer confined to brilliant days when conditions of light are just right—but fully timed pictures may be made in cloudy and dull weather. The advantage of speed applies with equal force to time exposures. For example if a portrait required an exposure of say four seconds, with an ordinary Symmetrical Lens, an Anastigmat would reduce the time nearly one-half—a very important consideration especially if the subject happens to be a child.

## Regarding the Fitting of Special Lenses and Shutters

### —Our Guarantee

Fitting a shutter to an Anastigmat or other high grade lens and the proper adjustment of Lens and Shutter to Camera is a delicate operation. Unless each lens is accurately centered and so mounted as to maintain absolutely the correct optical distance between front and back combinations the best results cannot be obtained. To avoid errors as well as to





maintain our present high reputation for perfect goods, we do not list Centurys without lens or shutter, as we can only guarantee the whole equipment to prove satisfactory to the purchaser when the *camera, lens and shutter are supplied by us.*

The illustration shows the Grand Senior Special with Volute Shutter. The Bausch & Lomb Volute represents the highest type of Diaphragm Shutter. It is made of aluminum—very handsome in appearance, is rapid, compact, convenient, dust proof and durable. It operates for instantaneous, time and bulb exposures. The No. 1 size has speeds ranging from 1-150th of a second to 3 seconds, while the maximum speed of the No. 2 Shutter is 1-100th, and the No. 3, 1-75th.

When the exposure is made the shutter opens instantly and remains open to the full extent until the exposure is completed, when it closes instantly, thus giving the greatest possible exposure and the correct relative exposure for all speeds.

Each Century Grand Special is enclosed in a handsome sole leather carrying case, velvet lined, with lock, key, and two snap catches. The case has a compartment for five extra plate holders.

The Century Grand and Century Grand Senior Specials comprise absolutely the best obtainable in camera, lens and shutter. Nothing has been omitted which could in any way enhance their value as strictly high grade equipments in the full sense of the word. Prices are quoted on next page.



## Century Special Equipments

We supply the following Models fitted with any make of Anastigmat Lens desired. The combinations listed are carried in stock and can be promptly furnished. The cost of any other make of Lens or Shutter will be quoted upon request. The following prices include our No. 1 Automatic Shutter. The B. & L. Volute will be substituted for additional charge as given below.

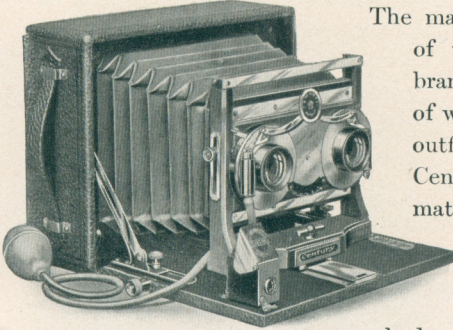
Camera	Size	With B. & L. Plastigmat Lens	With Zeiss Protar Series VII A	With Zeiss Tessar 11 B	With Goerz Series III	With Goerz Type B —Series 1 B
Century Model 46, . . .	4 x 5	No. 2, \$ 69.70	No. 3, \$ 89.20	No. 5, \$ 69.70	No. 1, \$70.40	No. 1, \$72.20
Century Model 46, . . .	5 x 7	No. 3, 84.90	No. 8, 111.90	No. 6, 96.40	{ No. 2, 83.60 No. 3, 93.50	{ No. 2, 86.30 No. 3, 97.60
Century Grand, . . .	4 x 5	No. 2, 77.70	No. 3, 97.20	No. 5, 77.70	No. 1, 78.40	No. 1, 80.20
Century Grand, . . .	5 x 7	No. 3, 94.90	No. 8, 121.90	No. 6, 106.40	{ No. 2, 93.60 No. 3, 103.50	{ No. 2, 96.30 No. 3, 107.60
Century Grand, . . .	6½ x 8½	No. 5, 133.70	No. 11, 153.20	No. 8, 177.20	No. 4, 127.50	NOT FURNISHED
Century Grand Sr., . . .	4 x 5	No. 2, 90.70	No. 3, 110.20	No. 5, 90.70	No. 1, 91.40	No. 1, 93.20
Century Grand Sr., . . .	5 x 7	No. 3, 107.90	No. 8, 134.90	No. 6, 119.40	{ No. 2, 106.60 No. 3, 116.50	{ No. 2, 109.30 No. 3, 120.60
Century Grand Sr., . . .	6½ x 8½	No. 5, 146.70	No. 11, 166.20	No. 8, 190.20	No. 4, 140.50	NOT FURNISHED

Extra for	4 x 5	5 x 7	6½ x 8½	
Volute Shutter in place of Auto.	*No. 1, \$14.30	†No. 2, \$16.30	‡No. 3, \$16.70	<p>*The No. 1 Volute Shutter is fitted to Goerz Lens Series III, No. 1 and No. 2; Plastigmat No. 2 and No. 3; Zeiss Protar VIIA No. 3 and No. 8; and Tessar 11B No. 5.</p> <p>†The No. 2 Volute Shutter is fitted to Goerz Lenses Series III, No. 3 and No. 4; Goerz Series 1B, Type B No. 1; Plastigmat No. 5; Zeiss Protar VIIA No. 11; and Tessar, 11B No. 6.</p> <p>‡The No. 3 Volute Shutter is fitted to Goerz Lenses Series 1 B, Type B, No. 2 and No. 3, Tessar 11B No. 8.</p>
Zeiss Protar Wide Angle, Series V,	No. 1, 22.50	No. 2, 22.50	No. 3, 28.00	
Auto Graflex Focal Plane Shutter	25.00	28.00	31.00	



# Century Stereoscopic Cameras

With Automatic Roller Division



The making of stereoscopic pictures is one of the most attractive and fascinating branches of photography. For this class of work we manufacture a Special Stereo outfit, and also list Models 43, 46 and the Century Grand, with a wide front and a matched pair of lenses. The Special Stereoscopic Century contains all requisite adjustments—including rack and pinion, swing back, swing bed, adjustable front, automatic bed clamp, No. 3 Automatic shutter, and a pair of Rapid

Rectilinear Lenses. It is extremely portable, measuring only  $2\frac{1}{2} \times 6\frac{1}{2} \times 8\frac{1}{2}$  inches, constructed throughout of mahogany, and covered with fine black cowhide leather.

The Stereoscopic Centurys, Models 43, 46 and the Century Grand correspond with our regular models in general design and adjustments, but in place of one lens for full size  $5 \times 7$  pictures, we fit a matched pair of lenses and our Automatic Double Valve Stereoscopic Shutter. Model 43 has Rapid Rectilinear Lenses, while Model 46 and the Century Grand, are fitted with Rapid Symmetrical Lenses. The regular lens and shutter for making full sized  $5 \times 7$  pictures can be added to the outfit at any time.

## PRICE

Including Sole Leather Case and one Double Plate Holder

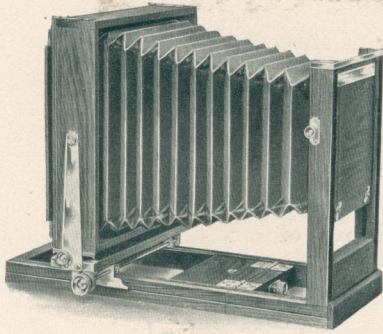
Special Stereoscopic Camera,	. . .	\$ 35.00
Stereo Century, Model 43,	. . .	48.00
Stereo Century, Model 46,	. . .	60.00
Stereo Century Grand,	. . .	70.00

Any of the above cameras can be fitted with a matched pair of Plastigmat, Zeiss Tessar, B. & L. Protar VIIA or Goerz Series III Lenses. Prices quoted upon application.





## Victor View Camera



A modern, up-to-date and most desirable moderate priced View Outfit, having all needful adjustments required by the Amateur or Professional picture taker — this in brief is a description of our new Camera — the Victor View.

It is made throughout of selected seasoned cherry, mahogany finish; the metal trimmings are of polished and lacquered brass and it is equipped with Reversible Back, Rack and Pinion Rear

Focus, Rising and Falling Front, Vertical Central Swing Back, and Horizontal Central Swing Back.

The front board is exceptionally large, and therefore will accommodate large flanges and “behind the lens” or inside shutters.

As shown in the illustration, the focusing is accomplished by moving the back of the Camera, the front always remaining stationary, in consequence of which extreme Wide Angle Lenses may be employed for interiors and all subjects in confined situations.

Taken in its entirety, the Victor is a Camera that will fully meet the requirements of the Photographer who does not care for the more elaborate view cameras, but desires a thoroughly practical outfit at a moderate outlay. We are safe in saying there is absolutely no Camera in the market that equals the Victor at anywhere near the price. One double plate holder and canvas case with compartment for five extra holders, are included in the price. Made only in two sizes.

Focal capacity,  $6\frac{1}{2} \times 8\frac{1}{2}$ ,  $18\frac{1}{4}$  inches;  $8 \times 10$ ,  $19\frac{1}{2}$  inches.

### PRICE

	$6\frac{1}{2} \times 8\frac{1}{2}$	$8 \times 10$
Victor View Camera . . . . .	\$17.00	\$18.50
Rapid Symmetrical Lens and No. 4 Shutter, extra, . . . . .	15.00	18.00
Extra Double Plate Holders, each, . . . . .	1.75	2.00
Carrying Case, if made to hold Tripod, extra . . . . .	.75	.75





THE MOTHER

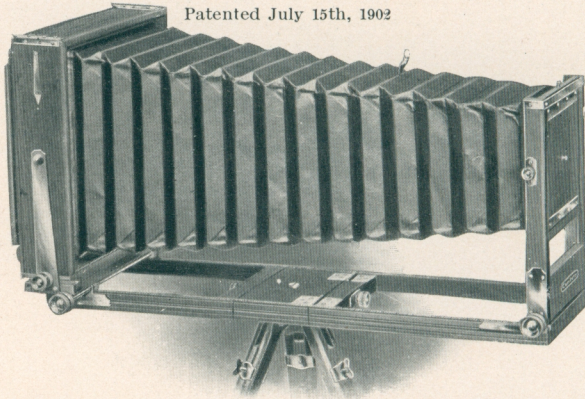
NEGATIVE BY ANDREW EMERINE, JR.  
MADE WITH B. & L. ZEISS LENS



# Century View Camera No. 1

With Double Grooved Bed

Patented July 15th, 1902

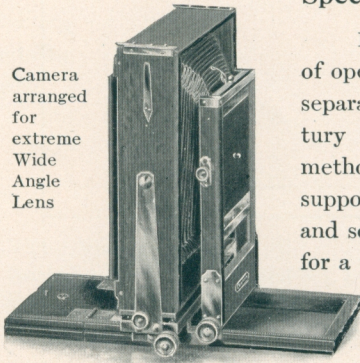


The Century View Camera fully meets the demands for an instrument combining in the highest degree, convenience, strength, compactness, portability, ease of manipulation and adaptability for the wide range of work constantly coming before the professional, and which advanced amateurs often attempt with but little satisfaction, owing to the very limited field of work covered by many types of Cameras.

## Special Features and Points of Excellence

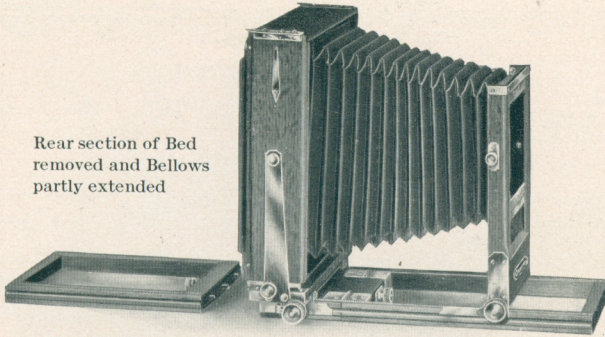
1. A Double Grooved Bed. The scheme of operating the front and back of the Camera in separate grooves on the bed is distinctly a "Century idea," covered by letters patent. This method permits the use of extra long side brackets supporting the front and back, insuring strength and solidity. A double grooved bed also provides for a very much shorter focus Wide Angle lens, as the front carrying lens can be brought closer to the ground glass than is possible with the ordinary type of view camera.

Camera arranged for extreme Wide Angle Lens





Rear section of Bed removed and Bellows partly extended



2. Perfect rigidity of every part in any position.
3. Extreme length of bellows for copying, enlarging, telephoto and other work requiring long focus lenses.
4. The focus may be adjusted by moving the front or back as preferred; both are operated by rack and pinion.
5. Three Section Bed. The second section is hinged, and arranged to fold close to the Camera, even when lens and shutter are attached. The third section adjusts at the back by means of a large thumb-screw, and two pins fitting in brass sockets, avoiding any lost motion.
6. Automatic stop lock, to prevent back going beyond edge of bed.
7. Adjustable sliding front of great range; rack and pinion movement.
8. Both horizontal and vertical swings operate at the center, with set screws at either side. Brass plumb indicator for adjusting swing back.
9. Reversible Back for horizontal and upright views.

Focal Capacity or Length of Bellows

5 x 7 — 22 inches.    6½ x 8½ — 27 inches.    8 x 10 — 32 inches.    11 x 14 — 37 inches.

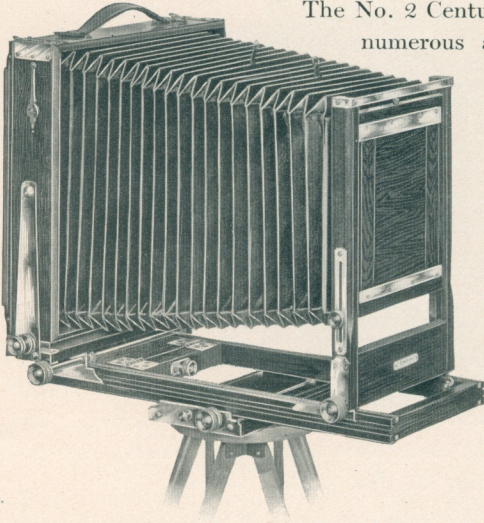
PRICE

Including one Plate Holder and Canvas Case with space for Five Holders

	5 x 7	6½ x 8½	8 x 10	11 x 14
Century View Camera, No. 1,	\$21.00	\$22.00	\$25.00	\$36.00
Rapid Symmetrical Lens and No. 4 Shutter, extra,	10.00	15.00	18.00	
Rapid Symmetrical Lens and No. 1 Shutter, extra,	13.50	18.50	21.50	
Extra Double Plate Holders, each,	1.25	1.75	2.00	4.50
Carrying Case, if made to hold tripod, extra,	.75	.75	.75	



## Century View Camera No. 2



The No. 2 Century View Camera possesses all the numerous advantages and special features applied to Model 1, and in addition has an auxiliary base attachment, for balancing camera on the tripod. The bellows tapers but very little, giving an extra large front and lens board which will accommodate wide flanges and inside shutters. Both swings are operated by rack and pinion.

The auxiliary base is, in reality, a supplementary bed on which the entire camera moves forward or back by rack and pinion, so that the weight is

evenly distributed and the Camera always in perfect balance when on the tripod, no matter whether an extra long focus or a wide angle lens is employed. The advantage of this feature will at once appeal to both the professional and advanced amateur photographer.

Length of Bellows,  $6\frac{1}{2} \times 8\frac{1}{2}$ , 27 inches;  $8 \times 10$ , 32 inches.

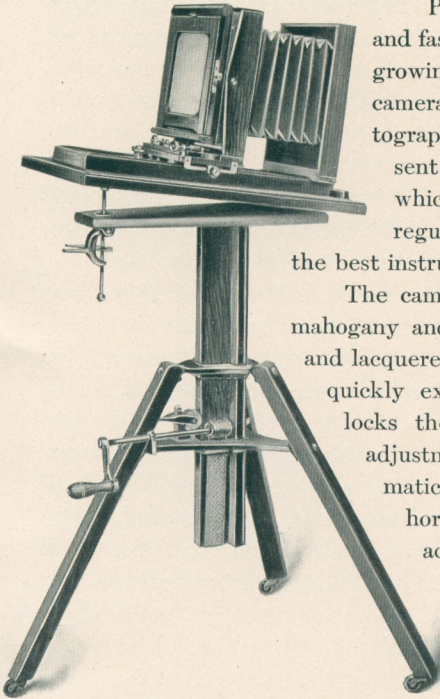
### PRICE

Including one Plate Holder and Canvas Case with space for Five Holders

Century View Camera No. 2, . . . . .	6½ x 8½ \$26.00	8 x 10 \$30.00
Rapid Symmetrical Lens and No. 4 Shutter, extra, . . . . .	15.00	18.00
Rapid Symmetrical Lens and No. 1 Shutter, extra, . . . . .	18.50	21.50
Extra Double Plate Holders, each, . . . . .	1.75	2.00
Carrying Case, if made to hold tripod, extra, . . . . .	.75	.75



## Century Home Portrait Outfit



Portraiture is one of the most charming and fascinating branches of photography. The growing demand for a special amateur portrait camera, corresponding to the professional photographer's equipment, has induced us to present the Century Home Portrait Outfit, which in reality is a counterpart of our regular Studio Camera—recognized as the best instrument for gallery use in the market.

The camera is made of selected, well seasoned mahogany and cherry, with metal parts of polished and lacquered brass. A knob on the bed is used to quickly extend the bellows, and a slight turn locks the back. A focusing lever, for fine adjustment, is placed at the side, and automatically locks at any desired point. Both horizontal and vertical central swings are actuated by our new pivot rack and pinion movement. The lens board measures 7 inches square. The Plate Holder is the regulation single holder, with non-detachable curtain slide, and made to

receive the plate in either a vertical or horizontal position. By means of a sliding "cut off," two pictures can be made on a 5 x 7 plate.

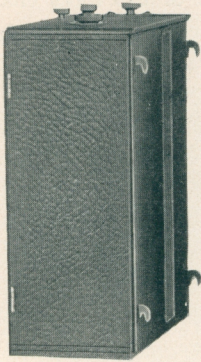
The stand adjusts by direct drive and crank handle—no belt. The patent tilting device for adjusting the rear of the camera is an entirely new design. A slight pressure of the thumb is all that is necessary when the top is to be lowered, while for tilting the camera forward you simply lift the rear of the top to the desired angle. Made 5 x 7 size only.

### PRICE

Century Home Portrait Outfit, including Camera, Curtain Holder and Stand, . . . . .	\$30.00	Home Portrait Stand only, . . . . .	\$9.00
Camera and Curtain Slide Holder	25.00	Extra Curtain Holders, each, . . . . .	2.00
		Extra Curtain Holders, Mahogany Finish, each . . . . .	2.50



## The Cirkut Panoramic Attachment



Cirkut Attachment

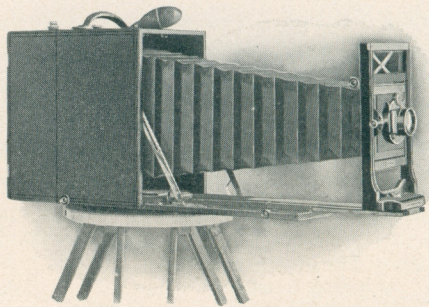
Panoramic Photography has never been fully developed or its possibilities appreciated owing largely to a lack of practical apparatus. The wonderful work produced by our Professional Panoramic Camera, the Cirkut, and the increasing interest in this branch of photography has led us to introduce the Cirkut Attachment, which when adjusted to an ordinary camera, adapts it for Panoramic Work.

Any owner of a 5 x 7 Folding Plate Camera having a revolving or reversible back, can, by fitting the Cirkut Attachment, convert his camera into a panoramic outfit—thus in reality having two cameras in one.

The Attachment is built on a plan that avoids entirely the usual swinging lens and stationary plate or film principle, which necessitates the use of a comparatively short focus lens, the resulting picture often showing violent perspective and great distortion. With the latitude in focal lengths of lenses possible with the Cirkut Attachment distortion is practically eliminated.

The Attachment measures  $3\frac{1}{2} \times 8 \times 8$  inches and weighs 5 pounds. It is made to use the cartridge system of daylight loading film. The supply spool carries film  $6\frac{1}{2}$  inches wide or less. Negatives of any length can be made up to 6 feet. There is absolutely no limit to the angle of view—the complete circle of  $360^\circ$  may be photographed, or any part of it—a pressure on the bulb being all that is necessary to start and stop the motor.

When in operation the film unwinds past a slot on a roller. The camera is revolved about an axis by the same mechanism, (a special tripod and top being furnished) and in so doing exposes



Attachment Fitted to 5 x 7 Camera





Reduced from negative 4 feet long, made with Cirkut Attachment

the film. There is an indicator on top of the camera showing the exact amount of film consumed and quantity remaining unexposed.

The variety of subjects for panoramic pictures is greater than would seem at first thought. Scenery of all kinds, Mountains, Lakes, Valleys, Extensive Manufacturing Plants, College and University Grounds, Residences, Private Estates, Groups, Games, Athletic Sports, etc., etc.

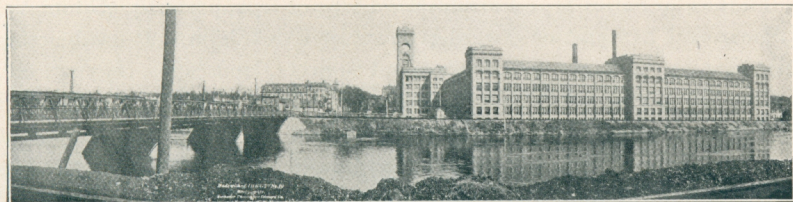
Just consider the possibilities of a camera that will make, with one exposure, a negative any length desired up to 6 feet, and of various widths; unlimited in angle of view and equally sharp from end to end — this in brief describes the Cirkut Attachment.

It is a most desirable and valuable addition to any outfit, and in point of fact for successful Panoramic work it is practically indispensable.

The film is made especially for the Attachment by Eastman Kodak Co., Rochester, N. Y.

#### PRICE

5x7 Attachment, complete with special Tripod having metal ratchet	
Top, also Carrying Case, . . . . .	\$ 60.00
6½ inch Film, 3 feet long, per roll, . . . . .	.80
6½ inch Film, 6 feet long, per roll, . . . . .	1.60



Reduced from negative 3 feet long, made with Cirkut Attachment



## Century Lenses

Century Lenses are made in the largest and best equipped optical factory in the country, operated by Bausch & Lomb Optical Company, Rochester, N. Y.

In the construction of Century Lenses, every process from the selection of the raw material through the successive steps of grinding, polishing, cementing and mounting, are accurately controlled. Any error is detected in the particular step in which it occurs, so that our lenses, when ready for mounting, are correct—both as to the material from which they are made and the optical properties they possess. Every lens that does not reach the proper standard of quality to which all Century Lenses must conform, is rejected. Our regular series of Lenses comprise:

### Rapid Rectilinear Rapid Symmetrical Centar Series II

The Century Rapid Rectilinear Lenses are composed of two achromatic combinations of equal focus. They are sufficiently rapid for general amateur work, and possess good covering power, and definition.

The Rapid Symmetrical is a higher type of lens than the Rectilinear, and possesses qualities not found in the ordinary double combination lenses of the Rectilinear form. It is made of superior glass and ground upon curves that insure increased covering power, ample speed for instantaneous exposures, and a flat field.

The Centar Series II is a symmetrical type of lens, perfectly achromatic, rectilinear and of superior covering power and definition. It is admirably adapted for portraits, groups, architectural subjects, landscapes, copying, etc.

The front and back combinations may be used alone as long focus objectives. In this form they are particularly well adapted for distant views, mountain scenery, and all remote subjects, where extreme speed is not essential. The focal length of either front or back lens, when used alone, is double that of the complete lens, and the size of the image is, therefore, about twice that given by the complete lens.





Relative size of objects, using both Front and Back Combinations of Convertible Lens.



The same subject, made with Front or Back Combination of Convertible Lens.

## Price List of Centar Lenses, Series II, With or Without Shutter

No.	Sizes	Equiv. Focus	Focus of Back Lens	With No. 1 Automatic Shut'r	With No. 4 Regular Shutt'r	With Barrel and Iris Diaphragm No Shutter
1	3 $\frac{1}{4}$ x 4 $\frac{1}{4}$	6 in.	12 in.	\$21.00	\$17.00	\$12.00
2	4 x 5	6 $\frac{3}{4}$ in.	13 $\frac{1}{2}$ in.	21.00	17.00	12.00
3	5 x 7	8 $\frac{3}{4}$ in.	17 $\frac{1}{2}$ in.	23.00	19.00	14.00
4	6 $\frac{1}{2}$ x 8 $\frac{1}{2}$	10 $\frac{1}{2}$ in.	21 in.	28.00	24.00	17.00
5	8 x 10	12 in.	24 in.	34.00	30.00	20.00

## Wide Angle Lenses

A Century Wide Angle Lens is a valuable addition to any outfit. It includes from twenty-five to thirty degrees wider field than the Rapid Rectilinear or Rapid Symmetrical Lenses, and is particularly valuable for confined situations—interiors and certain architectural subjects, for, being much shorter focus, it permits placing the camera closer to the object.

We mount Century Wide Angle Lenses to fit the same shutter and interchange with the regular Rectilinear, Rapid Symmetrical and Centar Lenses.

### PRICE

4 x 5, \$5.00

5 x 7, \$7.50

6 $\frac{1}{2}$  x 8 $\frac{1}{2}$ , \$12.00

## Century Portrait Attachment

For making large portraits with short bellows cameras—like Models 40, 41 and 43. We can furnish this attachment for all makes of Cameras.

### PRICE

4 x 5, \$1.50

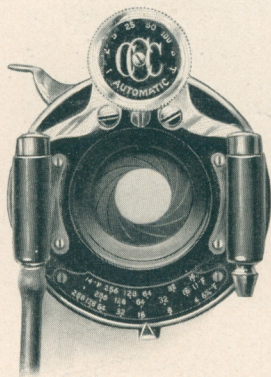
5 x 7, \$1.50

6 $\frac{1}{2}$  x 8 $\frac{1}{2}$ , \$2.00

8 x 10, \$3.00



## Century Shutters



No. 1 Century Automatic Shutter

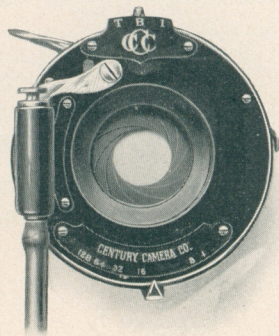
Century Shutters are made especially for Century Cameras, and are exclusive in design. They are beautifully finished, the bodies being a rich black with nickel fittings.

It is a fact worthy of consideration, that all screws, levers, cases and other working parts are measured, gauged and tested. The pneumatic retarding pistons upon which the accuracy of the various automatic exposures depends, are ground and fitted by hand, and carefully tested to a uniform standard. Even such minute details as the heads of screws used to hold the parts together, receive individual attention, each screw being placed in a lathe and polished by hand with several grades of specially prepared polishing materials. The axis upon which leaves of the iris diaphragm move is accurately turned and carefully riveted in place by hand. The actuating springs, made of the finest tempered steel wire, are coiled by hand, securing the utmost uniformity and elasticity.

### The Focusing Lever

applied to all regular Century shutters throws back the shutter leaves to permit focusing on the ground glass screen. With other iris diaphragm shutters it is necessary to set the dial for "time" exposures — then press the bulb or trigger to open the lens. All setting and pressing is dispensed with in the Century Shutters, as it matters not how the indicator stands, when you wish to focus simply adjust the focusing lever at the side. The shutter leaves will part — giving full aperture of the lens.

All Century Shutters have triplicate movement — operating for instantaneous, time and bulb exposures. The various speeds in fractional parts of seconds are governed by an indicator and dial



No. 3 Century Automatic Shutter



at the top, (excepting the No. 3 Automatic) while the iris diaphragms are regulated by a lever at the bottom of the shutter. The various apertures are marked on a scale in accordance with the U. S. system.

The first cut on page 38 shows our new No. 1 Automatic Double Valve Shutter.

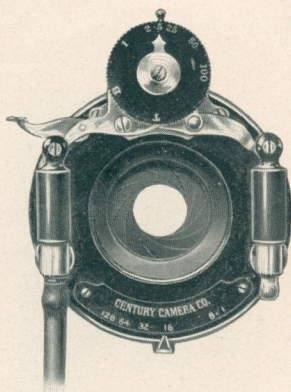
The mechanism is so arranged that after an exposure is completed the shutter automatically sets itself for the next picture. There can never be a question as to "whether the shutter is set" — it is ready at all times, being released and set simultaneously by either the finger or the bulb.

The shutter blades are manufactured of a special material not affected by variation in temperature, and are shaped so as to give the most even illumination.

The No. 3 Automatic Shutter, shown at the bottom of the preceding page, is the neatest and best moderate priced shutter on the market. It gives three different exposures, viz.: time, bulb and instantaneous. By moving an indicator at the top, the speed is quickly adjusted.

The No. 4 Regular Double Valve Shutter is one of the best types for general use yet devised. The ease of adjustment, perfect working of all parts, compactness and attractive design are noticeable features. The shutter is set by a lever at the top. Back of the shutter blades, which are shaped to give as even an illumination as possible, there is an Iris Diaphragm, operated by an index lever at the bottom.

On a dial at the top the various degrees of speed are indicated in fractional parts of seconds, and exposures of different lengths are secured by simply turning a milled head to the right or left. The speeds are controlled by a patent pneumatic device.



No. 4 Century Regular Double Valve Shutter

#### PRICE LIST OF CENTURY SHUTTERS

	3½ x 4½	4 x 5	5 x 7	6½ x 8½	8 x 10
No. 1 Century Automatic Shutter,	\$10.00	\$10.00	\$10.00	\$12.00	\$14.00
No. 3 Century Automatic Shutter,	4.00	4.00			
No. 4 Century Regular Shutter,	6.00	6.00	6.00	8.00	10.00



# Auto Graflex Focal Plane Shutter

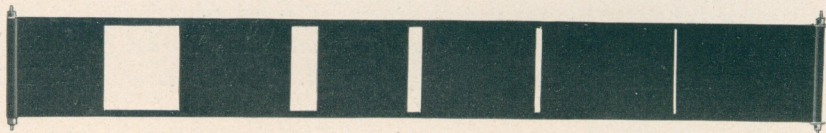
Patent Applied For



For ultra rapid photography, the Auto Graflex Shutter presents numerous advantages over those working in front of, between or behind the lens. Its position immediately in front of the sensitive plate or film insures the distribution of light with equal intensity upon every portion of the sensitive surface. In addition, the principle upon which it is constructed not only gives the maximum in speed, but at the same time the plate receives a greater volume of light in a given time than with any other type of shutter.

To secure successful results of rapidly moving objects, such as horse and automobile races, railroad trains, foot ball games, base ball contests, etc., there is no style of shutter that can equal the Auto Graflex. While constructed primarily for high speed work, it is also adapted for slow automatic exposures and time exposures of any duration. By simply turning a small dial the speed can be varied from "time" to  $\frac{1}{1000}$  part of a second. The maximum speed of an ordinary shutter placed at the diaphragm of a lens does not exceed  $\frac{1}{100}$  of a second, and many shutters of this class do not give shorter exposures than  $\frac{1}{50}$  of a second.

The curtain of the Auto Graflex Shutter is made on an entirely new principle — in one long piece, with apertures ranging from full opening to  $\frac{1}{8}$



of an inch. This insures an absolutely uniform aperture for the admission of light, and not a wedged shaped opening, as is so often the case with shutters having a double adjustable curtain.

The Auto Graflex Shutter is instantly set for any exposure by a *half turn* of a winding key. Dials on the outside indicate both the size of curtain aperture and the tension of roller spring controlling the speed.



The Auto Graflex Shutter is as easy to operate as an ordinary shutter, and can be adapted to all makes of folding plate cameras. We fit it for the Century without extra charge, but when ordered for other cameras we add cost of adapting.

#### PRICE

4 x 5  
\$25.00

5 x 7  
\$28.00

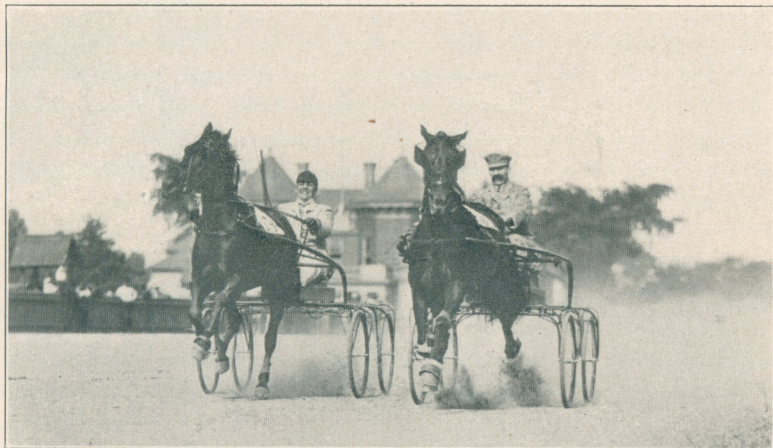
6½ x 8½  
\$31.00

8 x 10  
\$35.00

### Speeds of Shutters

When photographing objects in motion there is a minimum speed at which the shutter must work to obtain a negative perfectly sharp and free from blur. It is not wise to set the shutter at a speed faster than absolutely necessary, for the slower the speed the more chance of getting a fully timed plate.

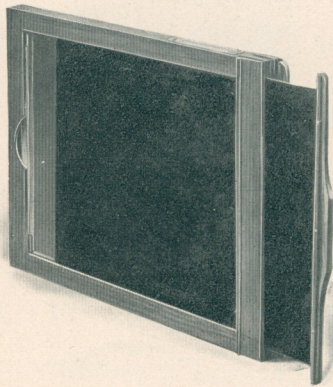
The fact should not be overlooked that the apparent speed of an object is considerably reduced according to the angle at which it approaches or recedes from the camera. When that angle is sixty degrees, the apparent speed is about one-half the actual speed, consequently the exposure may be nearly twice as long, and yet a sharp image secured. A little experience will soon demonstrate what speed, under given conditions, will yield the best results.



Made with an Auto Graflex Shutter



## Century Plate Holders—New Model



It is obvious that perfect pictures cannot be obtained from fogged plates. Fog results, many times, from the use of defective holders, holders which are faulty in design and construction. We can only guarantee successful results when our own holders are used in Century Cameras.

Century Plate Holders are made throughout of hard wood, all joints dovetailed, and fitted with our light-excluding shutter—a perfect device—which prevents light passing through the narrow opening when the slide is withdrawn. They are compact, light and easy to load, and the plate can be inserted or removed without touching the sensitive surface. The holder is designed so as to allow the full width of the plate being exposed.

A celluloid tablet, on which may be written data concerning exposures, is attached to each holder, a feature that every photographer will appreciate—"Century Quality" once more.

To fill the holder, it is only necessary to rest the plate on a wooden ledge or bar at one end, press the bar down and the plate falls in place.

We fit all Century Holders with special black press-board slides—experience having demonstrated their superiority over hard rubber. We use a material for slides made to our order especially for Century Holders. It is cut and coated in our own factory. Century Holder Slides

Will not Electrify and Cause Fog;

Will not Collect Dust;

Will not Crack or Split;—

Conditions which it is impossible to avoid with hard rubber.

### PRICE

3½ x 4½, each, \$1.00

4 x 5 each, 1.00

5 x 7 each, \$1.25

6½ x 8½ each, 1.75

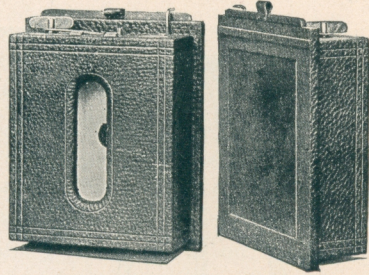
8 x 10, each, \$2.00

11 x 14, each, 4.50



## Daylight Roll Holders for Cartridge Film

The Roll Holder is about the size of three double plate holders, and will hold Film Cartridges of twelve exposures. By means of a Cartridge Roll Holder those desiring to avail themselves of the advantages of film may do so at small outlay, as the Roll Holder is adaptable to all Centurys except Petite No. 1.



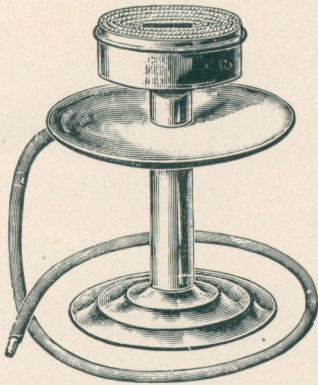
The Cartridge Holder loads in daylight, and is interchangeable with regular plate holders in the field.

### PRICE

	3½ x 4½	4 x 5	5 x 7
Cartridge Roll Holder fitted to Century Camera,	\$5.00	\$5.00	\$6.50

## Crown Flash Lamp

For Pure Magnesium Only



The Crown Flash Lamp is so constructed that the magnesium powder is stored in the body of the lamp and blown up through the center of flame, thoroughly consuming it and producing a powerful light. The head of lamp is filled with lamp-wick, saturated with alcohol. This gives a large flame, which is very essential in a perfect flash lamp.

The head of lamp is removable, in order to fill the magazine with magnesium powder. A safety disc is provided, to protect the hand when using lamp. Tube and mouth pieces are all furnished.

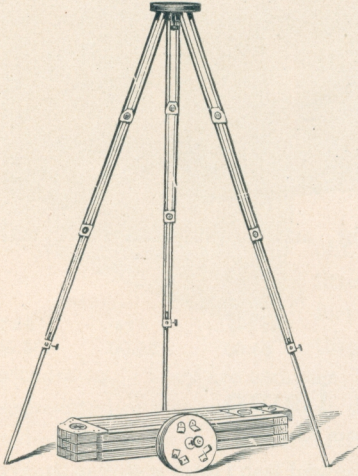
The Double Spreader will not clog up and is more powerful than any other lamp of double its cost now on the market. Long or short flashes can be made.

The Crown is the perfection of flash lamps, being safe, economical and reliable. It is finished in polished nickel and presents a very handsome appearance. Price, \$1.50.



# The Crown Tripod

Patented June 23, 1903



The Crown is a four-section telescopic folding tripod, absolutely rigid, quickly set up and readily adjusted for height.

It is made of selected straight grained cherry, soaked in an oil bath for ten days before being finished. The wood is then rubbed down and shellaced. This treatment renders it extremely tough and practically waterproof.

For carrying, the lower sections telescope into the third and the upper section folds back upon it, making it very compact.

All binding screws on lower sections of this tripod are "upset" and cannot be lost.

Taper pins in the ear pieces of the head fit snugly into metal tipped sockets of the legs, preventing loose joints and side play.

Expansion brackets in the upper section make it impossible for the legs to be detached from the head until brackets are folded.

The No. 1 when closed, measures  $16\frac{1}{4}$  inches and weighs with top, 36 ounces. When extended to its full capacity, it stands  $4\frac{1}{3}$  feet high.

The No. 2 closed, measures  $17\frac{1}{4}$  inches long and weighs with top, 65 ounces. When extended, it has a height of  $4\frac{2}{3}$  feet.

The No. 3 closed, measures 20 inches long and weighs with top, 70 ounces. When extended, it has a height of  $5\frac{1}{2}$  feet.

## PRICE

No. 1 Crown Tripod, with 4 inch top,	. . . . .	\$ 5.50
No. 2 Crown Tripod, with 6 inch top,	. . . . .	6.00
No. 3 Crown Tripod, with 6 inch top,	. . . . .	7.50

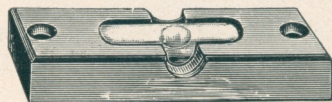






## Parts and Accessories

### Levels



Our Levels are made especially for Photographic work, and are accurate. They are carefully adjusted and sensitive to the slightest variation.

Price, each, . . . . . \$0.75

### Century Needle Hole Attachment

For making pictures without a lens. A very interesting experiment. Can be used with any camera having removable lens-board. Descriptive circular mailed on request.

Price, for Century Cameras, . . . . . \$2.00

For other cameras, when lens-board is sent us, . . . . . 2.50

### Tripods

#### Century Compact, Three Fold

No. 1, \$1.70	No. 3, \$3.50
No. 2½, 3.00	No. 4, 4.50

### Tripod Screws

For Leg, . . . . .	\$ .25
For top, up to 11 x 14, . . . . .	.30
For 11 x 14 top, . . . . .	.40

### Inside Kits

To fit any Holder

4 x 5 any opening, . . . . .	.20
5 x 7 " " . . . . .	.25
6½ x 8½ " " . . . . .	.30
8 x 10 " " . . . . .	.35

### Fine Ground Glass

Extra Quality, Satin Finish

3¼ x 4¼, . . . . .	.12	5 x 8, . . . . .	.20
4 x 5, . . . . .	.15	6½ x 8½, . . . . .	.20
5 x 7, . . . . .	.13	8 x 10, . . . . .	.30

### Lens Boards


For Centurys up to 5 x 7, . . . . .	.35
For Centurys above 5 x 7, . . . . .	.50
For Stereo Century, . . . . .	.50
For View Cameras up to 8 x 10, . . . . .	.50
For Century View, 11 x 14, . . . . .	.70

### Holder Slides

Hard Rubber or Press Board

3¼ x 4¼, . . . . .	.20	6½ x 8½, . . . . .	.50
4 x 5, . . . . .	.25	8 x 10, . . . . .	.65
5 x 7, . . . . .	.35	11 x 14, . . . . .	1.00





## Professional Studio Cameras and Accessories

We have a large department in our factory devoted to the manufacture of *modern* Studio Cameras and special apparatus for advanced workers in photography.

These goods are illustrated and described in our Professional Price List, copy of which we will be glad to mail upon request.

### The Cirkut Camera

We are sole manufacturers of the Cirkut Camera, the only practical instrument in the market for the production of Panoramic Photographs. It will make a picture any length up to  $12\frac{1}{2}$  feet and is unlimited in angle of view. The complete circle of vision —  $360^\circ$  can be included, or any part of it desired.

Special Cirkut Catalogue gives full information. Mailed free to those interested.

---

### Acknowledgement

Through the courtesy of Bausch & Lomb Optical Co., Rochester, N. Y., we are enabled to embellish this edition of our Catalogue with reproductions from photographs, made with lenses manufactured by them, and regularly quoted on Century Cameras.

We are also indebted to Mr. D. A. Souter, whose exquisite study of an old lady, made with Bausch & Lomb Rapid Rectilinear Lens adorns our title page.

CENTURY CAMERA CO.

Rochester, N. Y.





## Our Terms

All quotations are f. o. b. Rochester. We make no charge for packing, and guarantee safe arrival of goods when forwarded by express. Shipments by mail are always at the risk of purchaser, and postage must invariably be added to the cost.

We prefer that remittance be made by draft on New York, post-office or express money order or registered letter. Personal checks, when from parties unknown to us, unless certified by the bank on which they are drawn, will delay shipment of goods until check can be collected. Ten cents must be added to all personal checks to cover cost of exchange.

For the convenience of our customers, we suggest they purchase through a regular dealer in photographic goods, thus saving time and express charges.

CENTURY CAMERA CO.

Rochester, N. Y.



