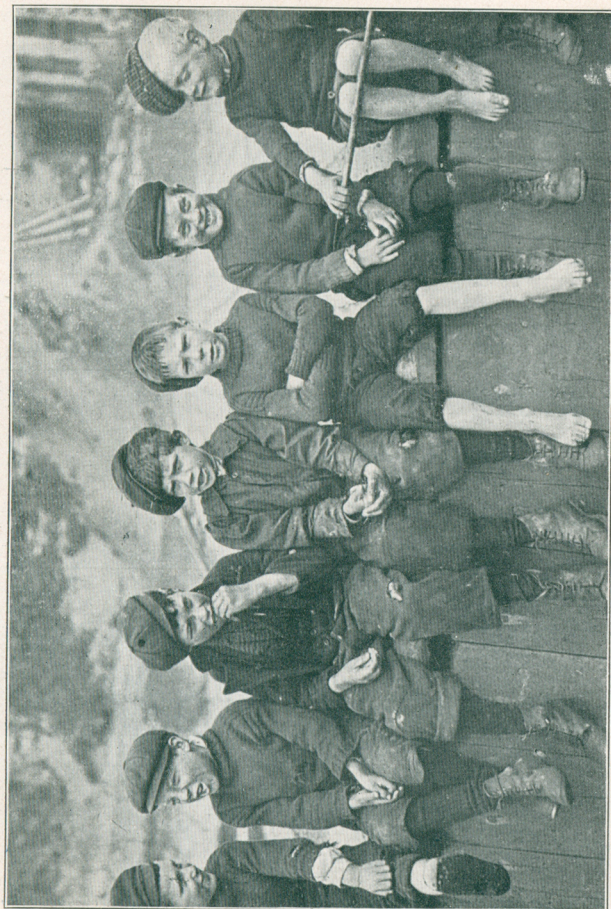


# Voigtländer & Sohn

A. G.

ESTABLISHED 1756.

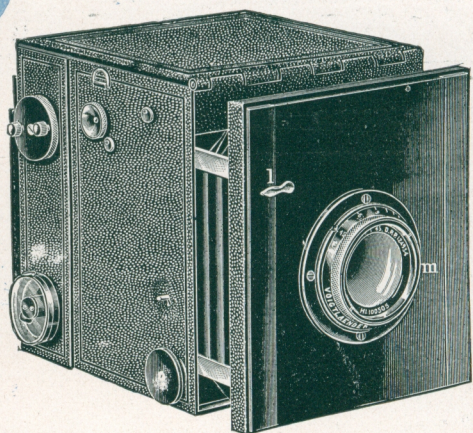


[Photo by H. P. Hopkins, Esq.]

"IMPS OF MISCHIEF."

Taken with Collinear Series III.





*Voigtländer*

## Metal Heliar-Reflex Camera "VIDA"

with Heliar Lens, F 4.5.

$\frac{1}{4}$ -Plate or  $9 \times 12$  c/m.

The "Vida" is the most perfect of all Reflex Cameras comprising

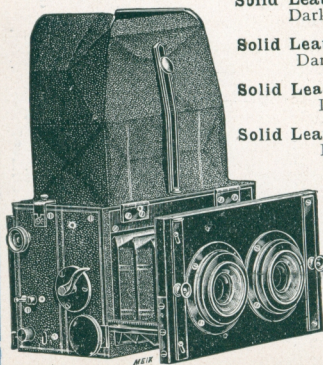
### Efficiency, Compactness, and Durability.

It has the following advantages—

1. The Camera is constructed entirely of light metal.
2. The focussing hood erects itself automatically.
3. The Apparatus is fitted with a Self-Capping Focal Plane Shutter, which is released by gentle pressure.
4. The Mirror and Shutter are set simultaneously.
5. An Extension Adapter can be fitted to the front for using lenses up to 14 inches focus.

### PRICES.

Size of Plate.	Dimensions of Camera.	Lens.	Camera with 3 Double Dark Slides, Solid Form. Code Word.	Camera with 3 Folding Double Dark Slides, Book Form. Code Word.	Camera with 3 Double Dark Slides with Vulcanite Shutters. Code Word.	Camera with Magazine for 12 Plates. Code Word.
$4\frac{1}{4} \times 3\frac{1}{4}$ ins. or $9 \times 12$ c/m.	$6\frac{7}{8} \times 6\frac{7}{8} \times 6\frac{7}{8}$ ins.	Heliar 18 c.m. $7\frac{1}{8}$ in. F 4.5.	£21 5 0 Festvida	£21 15 0 Holzvida	£21 15 0 Guvida	£22 13 0 Wexvida
<b>Heliar Reflex Camera (Wood Construction.)</b>						
$2\frac{1}{2} \times 3\frac{1}{2}$ $6\frac{1}{2} \times 9$ c/m.	$5\frac{1}{4} \times 5\frac{1}{4} \times 6$ ins.	Heliar $13\frac{1}{2}$ c/m. $5\frac{3}{8}$ ins. F 4.5.	..	..	£16 5 0 Kleinspigl	£16 17 0 Sexwek
$\frac{1}{2}$ -Plate or $12 \times 16\frac{1}{2}$ c/m.	$10 \times 10 \times 8\frac{1}{2}$ ins.	Heliar 24 c/m. $9\frac{1}{2}$ ins. F 4.5	..	£30 0 0 Gropigel	£30 0 0 Groguspigl	£31 10 0 Growespigl
Stereoscopic $1\frac{1}{2} \times 4\frac{1}{4}$ ins. or $4.5 \times 10.7$ c/m.	$4 \times 4 \times 6\frac{3}{4}$ ins.	2 Heliars 85 m/m. F 4.5	..	..	£20 0 0 Stereospigl	£20 14 0 Sterewex



**Solid Leather Sling Case** for Camera and three Double Dark Slides, 20/-,  $2\frac{1}{2}$  ins.  $\times$   $3\frac{1}{2}$  ins. or  $6\frac{1}{2} \times 9$  c/m.  
Code Word: Kleintasch.

**Solid Leather Sling Case** for Camera and six Double Dark Slides, 22/6,  $2\frac{1}{2}$  ins.  $\times$   $3\frac{1}{2}$  ins. or  $6\frac{1}{2} \times 9$  c/m.  
Code Word: Sechsleder.

**Solid Leather Sling Case** for Camera and three Double Dark Slides, 25/-,  $\frac{1}{2}$ -Plate or  $9 \times 12$  c/m.  
Code Word: Spigtasch.

**Solid Leather Sling Case** for Camera and six Double Dark Slides, 27/6,  $\frac{1}{2}$ -Plate or  $9 \times 12$  c/m.  
Code Word: Spigeleder.

**Solid Leather Sling Case** for Camera and three Double Dark Slides, 35/-,  $\frac{1}{2}$ -Plate or  $12 \times 16\frac{1}{2}$  c/m.  
Code Word: Grostasche.

**Solid Leather Sling Case** for Camera and six Double Dark Slides, 40/-,  $\frac{1}{2}$ -Plate or  $12 \times 16\frac{1}{2}$  c/m.  
Code Word: Sechtasche.

**Solid Leather Sling Case** for Camera and three Double Dark Slides, 17/6, Stereoscopic,  $1\frac{1}{2} \times 4\frac{1}{4}$  ins.,  $4.5 \times 10.7$  c/m. Code Word: Steretasch.

**Solid Leather Sling Case** for Camera and six Double Dark Slides, 20/-, Stereoscopic,  $1\frac{1}{2} \times 4\frac{1}{4}$  ins.,  $4.5 \times 10.7$  c/m. Code Word: Stereleder.

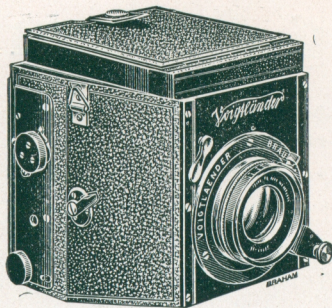
**Sole Agent for Great Britain and Colonies, F. G. PHILLIPS.**





# Voigtländer

## "BIJOU" REFLEX CAMERA



Is constructed entirely of light metal covered with black leather, and is designed to meet the requirements of Tourists, Sportsmen and others who wish to have the advantage of a high-class Reflex Camera in a small and convenient size.

The size plate used is  $4\frac{1}{2} \times 6$  c/m,  $1\frac{3}{4} \times 2\frac{3}{8}$  inches. Negatives, however, can be considerably enlarged, good pictures up to  $40 \times 50$  c/m,  $16 \times 20$  inches, can be made without any great loss of sharpness.

A specially-constructed Metal Magazine holding 12 plates is generally supplied with the Camera, but if desired single metal dark slides can be used, in the latter case a special adapter is necessary.

£ s. d. Code Word:

"Bijou" Reflex Camera, complete with "Heliar" Lens

F 4.5. Magazine for 12 plates and leather sling case 18 15 0 Vierspiegel.

Ditto ditto with 6 Single Metal Dark Slides and

Adapter, instead of Magazine ... 16 12 0 Vierreflex.

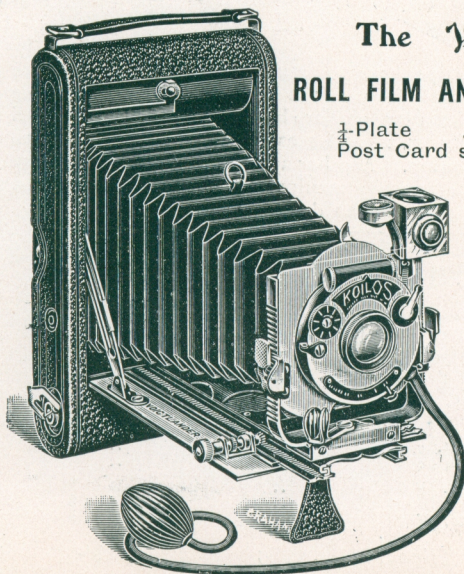
Telephoto Attachment, giving a magnification of  $2\frac{1}{2}$  times 2 10 0 Vierretele.

Six Single Metal Dark Slides, in case ... 13 0 Vierrekas.

Adapter for using Single Dark Slides ... 10 0 Vieradap.

## The Voigtländer

### ROLL FILM AND PLATE CAMERAS



$\frac{1}{4}$ -Plate ..  $4\frac{1}{4} \times 3\frac{1}{4}$  ins.  
Post Card size  $5\frac{1}{2} \times 3\frac{1}{2}$  ins.

#### Daylight Loading Portable Pocket Camera,

fitted with double extension for using the back combination of the "Collinear" Lens.

#### PRICE.

Camera Complete with Collinear Lens III, F 6.8 in Koilos or Compound Shutter, 3 Single Metal Dark Slides & Focussing Screen,

$\frac{1}{4}$ -Plate £10 0 0

Postcard £12 0 0





# Voigtländer

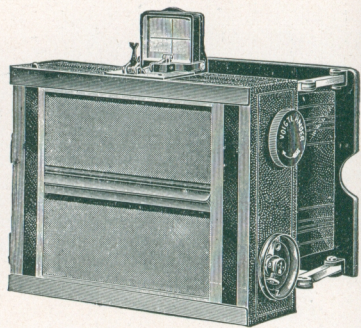
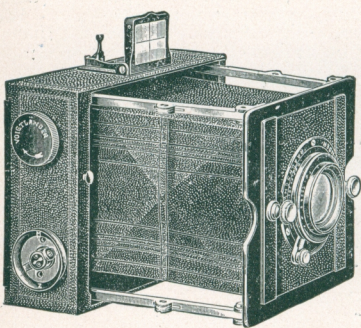
## Metal Spring Camera

WITH

**Improved Patented Focal Plane Shutter (Self-Capping).**

$\frac{1}{4}$ -Plate, or  $9 \times 12$  c/m.       $\frac{1}{2}$ -Plate, or  $13 \times 18$  c/m.

Press one lever and the Camera is ready for Exposure.



This Camera is the most perfect apparatus of the Folding Focal Plane Type that has yet been manufactured ; it has the advantage of being instantly brought into position for exposure by simply pressing the small lever to the right of the Finder, this releases the Finder and the Camera front which spring into position. Another advantage is the Self-capping Focal Plane Shutter which is easily manipulated and can be set when the sheath of the dark slide has been drawn out.

		Fitted with Voigtländer Lens in Focussing Mount.	With 3 Double Dark Slides, Solid Form with folding Wood Shutters.			With 3 Double Dark Slides, Solid Form with extractable Vulcanite Shutters, or Book Form with folding Wood Shutters.		
		c/m	£	s.	d.	£	s.	d.
$\frac{1}{4}$ -Plate or $9 \times 12$ c/m size.	{	Dynar	13½	F 6		14	0	0
		Collinear III.,	13½	F 6·8		15	5	0
		Collinear II.,	13½	F 5·4		16	0	0
		Heliar	15,	F 4·5		16	0	0
		Telephoto At- tachment A.						
$\frac{1}{2}$ -Plate or $13 \times 18$ c/m size.	{	For Objectives	13½,	c/m				
		" "	15,	c/m				
		Dynar	18,	F 6		16	15	0
		Collinear III.,	18,	F 6·8		18	0	0
		" II.,	20,	F 5·4		20	0	0

Excelsior Telescopic Tripod, Brass, 11/6 ; Aluminium, 18/-

**Sole Agent for Great Britain and Colonies, F. G. PHILLIPS.**





# Voigtländer Heliar Camera

WITH

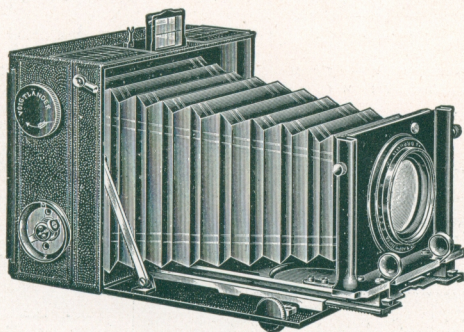
Improved Patented Focal Plane Shutter (Self-Capping).

$\frac{1}{4}$ -Plate, or  $9 \times 12$  cm. Continental size only.

This Camera is constructed of Light Metal similar to the Voigtländer Metal Spring Camera, and for high-class workmanship and mechanical ingenuity is unsurpassable. The Heliar Camera is fitted with a Focal Plane Shutter of similar construction as in the Spring Camera. The Lens generally supplied with this Camera is an 18 cm. Heliar  $7\frac{1}{8}$  ins. focus. This Lens has already made a great name for itself in the Photographic world. Working at a full aperture of F 4.5, it is suitable for all the requirements of general Photography, and is the best of all modern Lenses.

The Camera is fitted with Rack and Pinion Focussing movement with extension to 11 ins., enabling Lenses of various Focal lengths to be used.

A Lens Shutter can be fitted to this Camera in addition to the Focal Plane if desired, enabling the user to obtain a greater variety of exposure.



With Voigtländer Lens in Countersunk Mount.	Camera with 3 Double Dark Slides, Solid Form with Folding Wood Shutters.	Camera with 3 Double Dark Slides, fitted with extractable Ebonite Shutters or Book Form with Folding Wood Shutters.
Heliar 18cm., $7\frac{1}{8}$ ins., F 4.5	£16 0 0	£16 10 0
Collinear II. 15cm., F 5.4	14 15 0	15 5 0

Dimensions when closed,  $6 \times 5 \times 2\frac{5}{8}$  ins.

Weight, without Lens, 2 lbs. 9 ozs.

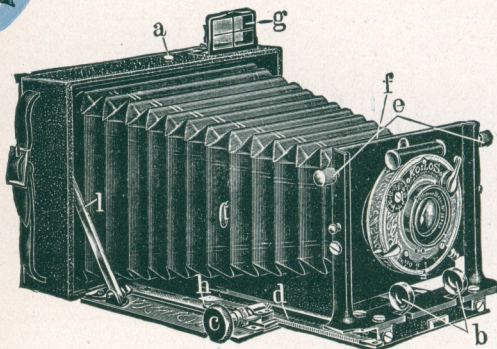
Telephoto Attachment to above Camera, £4 5s.

Leather Case for Camera and 3 Dark Slides, 18/-

6 20/-

Excelsior Telescopic Tripod—Brass, 11/6 .. " Aluminium, 18/-





The  
*Voigtlander*  
**Alpine  
Camera,**

$\frac{1}{4}$  Plate, or  $9 \times 12$  c/m.  
Postcard  $5\frac{1}{2} \times 3\frac{1}{2}$  ins.  
or  $10 \times 15$  c/m  
For Plates or Film  
Pack.

**Especially suitable for use in Tropical Climates.**

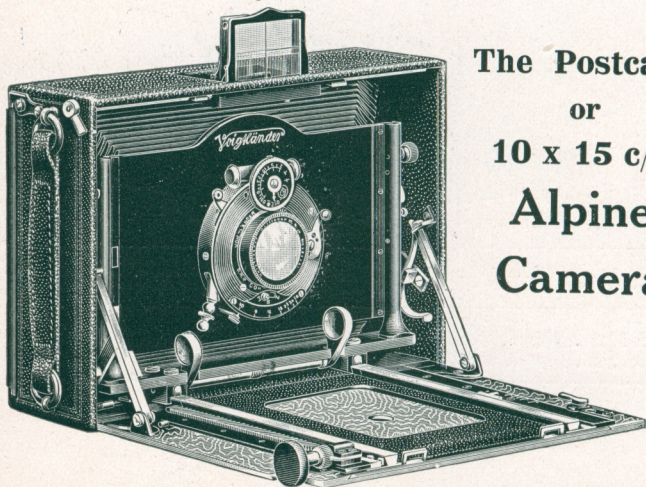
This Camera is entirely constructed of LIGHT METAL, and is fitted with a Voigtlander Lens, in Koilos or Compound Shutter. It weighs 1 lb. 11 ozs.  $\frac{1}{4}$ -Plate size, 2 lbs. 10 ozs. Postcard size.

In consequence of the very long triple extension, work can be done with the Back Combination of the Collinear Lens.

This Camera can be fitted with a telephoto attachment which has been especially designed to screw inside the camera. This form will be seen to be a great advantage for producing good telephoto work.

The Postcard size or  $10 \times 15$  c/m Camera can be supplied fitted for Panoramic or Stereoscopic work.

The measurements of the apparatus are  $5\frac{3}{4} \times 4\frac{3}{8} \times 1\frac{1}{2}$  inches  $\frac{1}{4}$ -Plate size,  $7\frac{1}{8} \times 4\frac{3}{4} \times 2\frac{1}{4}$  inches Postcard or  $10 \times 15$  c/m size.



**The Postcard  
or  
 $10 \times 15$  c/m  
Alpine  
Camera.**

For Prices see next page.

**Sole Agent for Great Britain and Colonies, F. G. PHILLIPS.**





# Voigtländer Alpine Camera

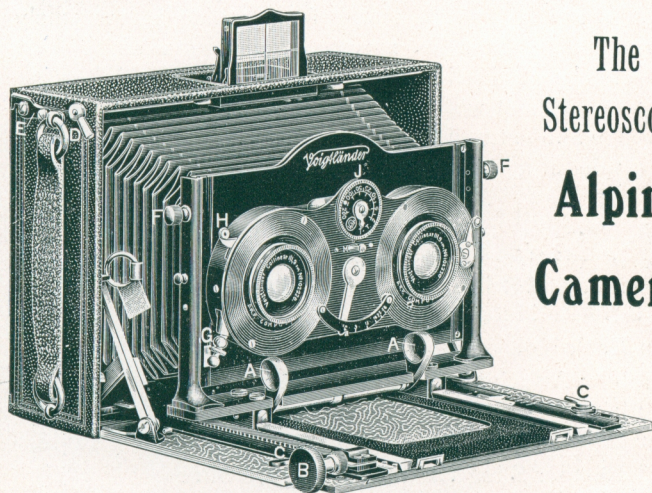
## PRICES.

$\frac{1}{4}$ -Plate or  $9 \times 12$  c/m.

	£	s.	d.
Camera with Collinear Lens Series III., 12 c/m., in Koilos or Compound Shutter, six Single Metal Dark Slides and Focussing Screen ..	11	10	0
Ditto, with Collinear III., 13½ c/m. ..	12	0	0
Ditto, with Dynar 12 c/m. ..	10	5	0
Ditto, with Dynar 13½ c/m. ..	10	15	0
Ditto, with Dynar 15 c/m. ..	11	5	0
Telephoto Attachment, giving a magnification of $2\frac{1}{2}$ times ..	3	0	0
Film Pack Holder, $\frac{1}{4}$ -Plate ..	7	6	
Contrast Filters, A, B, or Orange, each ..	17	6	
Solid Leather Sling Case for Alpine Camera and 6 Slides ..	10	6	

Postcard  $5\frac{1}{2} \times 3\frac{1}{2}$  inches.  
10 × 15 c/m, or Stereoscopic.

	£	s.	d.
Camera with Collinear Lens, Series III., 15 c/m., in Koilos or Compound Shutter, six Single Metal Dark Slides and Focussing Screen ..	17	10	0
Ditto, with 2 Collinear Lenses III., 9 c/m., in Koilos or Compound Shutter ..	21	10	0
Ditto, with 3 Objectives and Koilos or Compound Shutters ..	29	10	0
Telephoto Attachment for Collinear III., 15 c/m., giving a magnification of $2\frac{1}{2}$ times ..	3	10	0
Film Pack Holder ..	1	15	0
Solid Leather Sling Case for Camera and 6 Slides ..	17	6	



The  
Stereoscopic  
Alpine  
Camera.

Excelsior Telescopic Tripod—Brass, 11/6 ... Aluminium, 18/-

Send for Complete  
Catalogue to

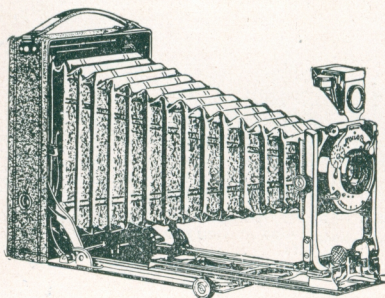
12, Charterhouse St., Holborn Circus, London, E.C.





# Voigtländer

## NEW POCKET CAMERA



### “RADIA.”

$\frac{1}{4}$ -Plate or  $9 \times 12$  c/m.

For Plates or Films.

Constructed entirely of Light Metal, Portable and Rigid.

Dimensions  $6\frac{1}{4} \times 4\frac{1}{2} \times 1\frac{3}{4}$  ins.

Weight 2 lbs.

The “Radia” Camera is a superior finished apparatus and is designed to meet the demand for a really efficient Pocket Camera, a special feature is the front which is extremely rigid, the double extension movement enables work to done with the back combination of the “Radia” Lens; this lens is a Double Anastigmat working at a full Aperture of F 6·8, and has been manufactured specially for this Apparatus, giving the finest definition and great depth of focus.

### PRICES.

Camera complete with “Radia” Anastigmat Lens F 6·8 in., Compound Shutter and 3 Slide Metal Dark Slides	... ..	£7 5 0
Film Rack Holder	... ..	7 6
Telephoto Attachment, giving a magnification of $2\frac{1}{2}$ times	... ..	3 0 0
Contrast Filters, A, B or Orange	... each	17 6
Solid Leather Sling Case for Camera, 3 Slides and Film Pack Holder	... ..	10 6
Excelsior Telescopic Tripod—Brass, 11/6; Aluminium, 18/-.		

**Sole Agent for Great Britain and Colonies, F. G. PHILLIPS.**

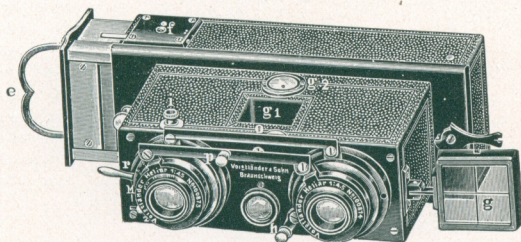




# Voigtländer

## "STEREOPHOTOSCOPE."

New Model fitted with Sector Shutter for time and instantaneous exposure.



The "Stereophotoscope" will produce the most perfect Stereoscopic pictures upon plates  $4\frac{1}{4} \times 1\frac{3}{4}$  inches,  $4.5 \times 10.7$  c/m. The body is constructed from one piece of metal, and it is, therefore, most suitable for warm or damp climates. The Lenses are fitted in focussing mounts. The Magazine Changing Box carries 12 plates, and has an automatic counter showing number of plates used. A Film pack holder can also be supplied. Stereophotos when viewed through the special size Stereoscope are magnified, and appear as large as the ordinary size Stereoscopic Views. The whole apparatus is of the **very highest class workmanship.**

The Lenses are fitted with Iris Diaphragms, both of which can be regulated by one movement.

Prices. Code Word.

	£	s.	d.	
Price of Voigtländer "Stereophotoscope," with two "Heliar" lenses, F 4.5, correctly paired, two view finders, changing box, and leather sling case complete .. .. .	20	0	0	Photoskop
Ditto with two Collinear Lenses III., F 6.8 .. .. .	17	10	0	Cofotoskop
Vertical Rising Front (Heliar Lenses) .. .. .	2	10	0	Vertoskop
" " (Collinear Lenses) .. .. .	2	10	0	Coverskop
Extra magazine for 12 plates .. .. .	4	0	0	Fotmagazin
Adapter for Single Nickel Dark Slides .. .. .	8	0		Fotodapter
Six Single Nickel Dark Slides in case .. .. .	16	0		Nickeletui
Film Pack Holder .. .. .	1	10	0	Fotpack
Stereoscope with Achromatic lenses for viewing the transparent "Stereophotoscope" views .. .. .	1	0	0	Fotostereo
Reversing Frame for making the Stereoscopic Positive without cutting the Negative .. .. .	8	0		Stereoram

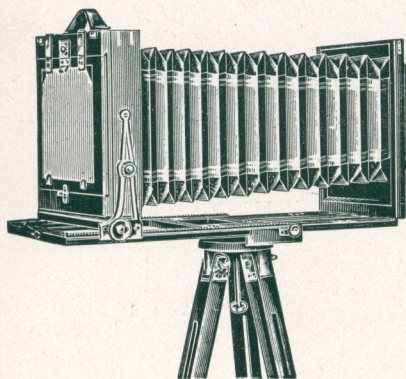
All our "Stereophotoscopes" are engraved with the name Voigtländer.

Size of Stereophotoscope complete,  $5\frac{1}{4} \times 4 \times 2\frac{3}{8}$  ins. Weight, 1 lb. 15 oz.





# Voigtländer Field Cameras.



**Model A.**

## MODEL A.

This Camera is of superior construction. The extension is done by double rack and pinion movement. Lightness and portability have not been secured by weakening any part of the Camera, but by eliminating brass and wood from places where they served no useful purpose, and in consequence great rigidity is guaranteed. The Camera is made of the finest seasoned Mahogany, with polished and lacquered brass bindings.

### Model A

English.	Size.	Continental.	Length of Extension.	Price, with 3 double Dark Slides.			Price of 1 double Dark Slide.		
ins.		c/m	ins.	£	s.	d.	£	s.	d.
$3\frac{1}{2} \times 5\frac{1}{2}$		10 x 15	14	5	5	0	0	15	0
$4\frac{1}{2} \times 6\frac{1}{2}$		13 x 18	16	5	15	0	0	15	0
$6\frac{1}{2} \times 8\frac{1}{2}$		18 x 24	24	7	5	0	0	18	0

### Model B

$6\frac{1}{2} \times 4\frac{1}{2}$	13 x 18	24	10	0	0	1	2	0
$8\frac{1}{2} \times 6\frac{1}{2}$	18 x 24	32	12	0	0	1	8	0
$12 \times 10$	24 x 30	40	15	5	0	1	15	0
$16 \times 12$	30 x 40	48	22	0	0	2	5	0

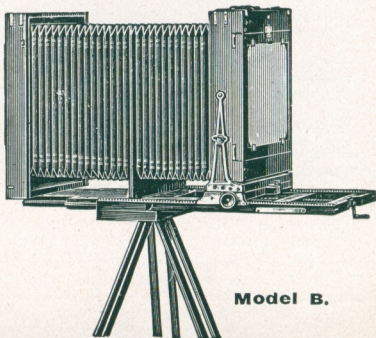
The two first sizes are fitted with Stereoscopic division.

**Model B. Triple Extension. Front extended by a Screw, and the back by Rack and Pinion.**

**Specially Brass Bound, for Use in Hot Climates.**

The screw extension movement, fitted for racking out the front, is so arranged that when extended the Camera is always balanced on its stand.

$6\frac{1}{2} \times 4\frac{1}{2}$  ins. and  $8\frac{1}{2} \times 6\frac{1}{2}$  ins. sizes, with Stereoscopic Division, if desired.



**Model B.**

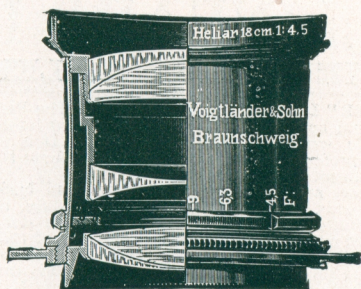
**Sole Agent for Great Britain and Colonies, F. G. PHILLIPS.**





# Voigtländer 'Heliar' Lens.

**A brilliant  
Anastigmatic  
Objective,  
working at a  
full aperture of  
F 4.5  
in all sizes.**



**The "HELIAR"  
gives the most  
successful  
results for  
Studio Work.**

Equiva- lent Focus.	Diam. of Lens.	Size of Plate sharply covered F 4.5.	Price.	Code Word.	Counter- sunk Mount.	Code Word.	Focussing Mount.	Code Word.
c/m	ins.	m/m	ins.					
5	2	11	1 1/8 x 2	£4 0 0	Fiasco	..	£4 15 0	Fischer
8 1/2	3 1/2	19	2 x 2	4 15 0	Fiber	£5 0 0	5 10 0	Fisch
12	4 1/2	27	3 1/4 x 2 5/8	5 10 0	Fibrin	5 15 0	6 5 0	Fiscos
13 1/2	5 1/2	31	4 1/4 x 3 1/4	6 0 0	Fibro	6 5 0	6 15 0	Fibrano
15	6	33	4 1/4 x 3 1/2	6 5 0	Fibrinosus	6 10 0	7 0 0	Filiorum
18	7 1/2	40	5 1/2 x 4	8 0 0	Figella	8 5 0	8 15 0	Figurina
21	8 1/2	47	6 x 4	11 0 0	Fichte	11 10 0	12 0 0	Fittich
24	9 1/2	54	7 x 5	13 0 0	Pinota	13 10 0	14 0 0	Finale
30	11 1/2	67	8 1/2 x 6 1/2	18 0 0	Firna	..	..	..
36	14 1/2	80	9 1/2 x 7	24 0 0	Fisano	..	..	..
42	16 1/2	93	10 1/2 x 8 1/2	31 0 0	Fiscal	..	..	..
48	19	107	12 x 10	37 10 0	Fistel	..	..	..
60	24	132	16 x 12	75 0 0	Finger	..	..	..

The cost of pairing two "Heliars" for Stereoscopic work is 8/-

The "**HELIAR**" **LENS** is acknowledged by Professional Photographers in all parts of the world to be the finest Anastigmat Lens yet produced. Working at the full aperture of F 4.5, pictures can always be made even in the dulllest light, while for portraits and groups it is unrivalled for its beautiful definition. Quarter-plate pictures can be enlarged to 34 x 47 inches without material loss of detail and definition.

A large variety of work done by this Lens can be seen at the London Branch, 12, Charterhouse Street, Holborn Circus, E.C.

**HELIAR LENSES**, 5 1/2 c/m and 8 1/2 c/m, are used by all the Continental and English Makers of Cinematograph Films.

The "**HELIAR**" **LENS** is **THE** Lens for Reflex Cameras. There is no finer work done than with the "Heliar."

The "**HELIAR**" **LENS** is a favourite with Press Photographers.





# Voigtländer

## "COLLINEAR" LENS.

### "THE PERFECT LENS."

The "COLLINEAR" LENS may well be styled "The Perfect Lens," although one of our earliest and best known type of Anastigmat lenses, it is more popular in the photographic world of to-day than ever. It is peculiarly suited for both amateur and professional photographers, and there is no work for which the "Collinear" is unsuitable.

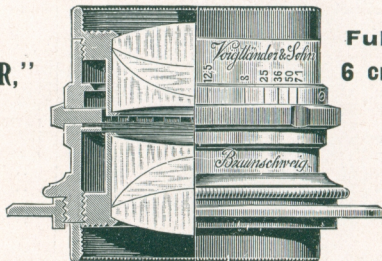
"Collinear" Lenses are symmetrical, the front and back combination being exactly the same focus, either can be used separately, and each in itself is a corrected achromatic anastigmat, giving searching definition. The detail in photographs taken with either or both combination of this lens is remarkable.

We supply "Collinears" to fit Kodak Hand Cameras so mounted that they can be fitted by the purchaser into the shutter of his camera. No alteration in the camera or shutter is necessary. A correctly marked diaphragm scale is supplied with each set.

For No. 3 F. P. Kodak "Collinear" III., F 6.8 special focus 125 m/m .. £5 5 0  
 " No. 3a " " " III., F 6.8 " " 166 m/m .. £6 5 0  
 " No. 4a " " " III., F 6.8 " " 210 m/m .. £8 15 0

When ordering specify which type of shutter your camera has.

"COLLINEAR,"  
 SERIES II.



**Full Aperture.**  
 6 cm. to 20 cm.,  
 F 5.4.

25 cm. to 60  
 cm., F 6.3.

Equivalent Focus.		Diameter of Lens.	Size of Plate sharply covered.		Ordinary Mount.	Code Word.	Countersunk Mount.		Focussing Mount.	
			At Full Aperture.	Stopped Down.			Price.	Code Word.	Price.	Code Word.
cm.	ins.	mm.	ins.	ins.	£ s. d.		£ s. d.		£ s. d.	
6	2 1/2	11	2 x 2	3 1/2 x 3 1/2	4 10 0	Galen	..	..	..	..
7	2 7/8	13	3 1/2 x 2 1/2	4 x 3 1/2	4 10 0	Galeotto	..	..	..	..
9	3 3/8	17	4 1/2 x 2 3/4	4 3/4 x 3 3/4	5 0 0	Gandara	5 5 0	Gabes	5 15 0	Nager
12	4 3/4	23	4 3/4 x 3 1/2	6 1/4 x 4 1/4	5 15 0	Gaston	6 0 0	Gafun	6 10 0	Narcose
13 1/2	5 1/4	26	5 x 4	6 1/2 x 5 1/2	6 5 0	Gatter	6 10 0	Galmei	7 0 0	Narcin
15	6	29	6 1/2 x 4 3/4	8 1/2 x 6 1/2	6 15 0	Gawein	7 0 0	Gambia	7 10 0	Nauders
20	8	38	7 1/2 x 5	9 3/4 x 7	9 0 0	Gemma	9 8 0	Gaza	10 0 0	Negus
25	9 3/4	40	8 1/2 x 5	10 x 8	11 0 0	Georgia	..	..	..	..
31	12 1/2	48	8 1/2 x 6 1/2	12 x 10	15 0 0	Ginster	..	..	..	..
37	14 3/4	58	9 x 7	14 x 10 1/2	20 0 0	Gorgone	..	..	..	..
44	17 1/2	70	11 x 8	15 1/2 x 11 1/2	27 0 0	Gudrun	..	..	..	..
52	20 3/4	82	12 x 10	17 1/2 x 13 1/2	34 0 0	Gunttram	..	..	..	..
60	23 3/4	91	13 1/2 x 10 1/2	19 1/2 x 15	45 0 0	Gunter	..	..	..	..

7 cm. & 9 cm. are the lenses specially made for Cinematograph work.

The cost of pairing two Collinears for Stereoscopic Work is 8/-

**Sole Agent for Great Britain and Colonies, F. G. PHILLIPS.**





# Voigtländer

## “Collinear” SERIES III.

Full Aperture.

7 cm. to 18 cm., F 6·8.

20 cm. to 58 cm., F 7·7.

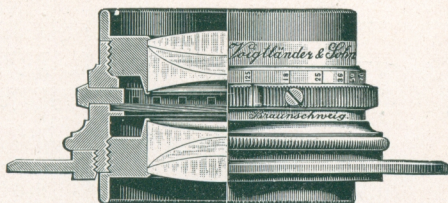
Equivalent Focus.		Diameter of Lens.		Size of Plate sharply covered		Ordinary Mount.		Code Word.	Countersunk Mount.		Focussing Mount.			
									Price.	Code Word.	Price.	Code Word.		
cm.	ins.	mm.	ins.	ins.	£	s.	d.		£	s.	d.	£	s.	d.
7	2 <sup>3</sup> / <sub>4</sub>	11	2 <sup>1</sup> / <sub>2</sub> × 1 <sup>3</sup> / <sub>4</sub>	4 × 3 <sup>1</sup> / <sub>4</sub>	4	0	0	Hadramaut						
9	3 <sup>1</sup> / <sub>4</sub>	14	3 <sup>1</sup> / <sub>2</sub> × 2 <sup>1</sup> / <sub>2</sub>	4 <sup>1</sup> / <sub>2</sub> × 3 <sup>3</sup> / <sub>4</sub>	4	5	0	Hagar	4 10 0	Hebe				
12	4 <sup>1</sup> / <sub>2</sub>	18	4 <sup>1</sup> / <sub>2</sub> × 3 <sup>1</sup> / <sub>4</sub>	6 <sup>1</sup> / <sub>2</sub> × 5	5	0	0	Hakon	5 5 0	Hedwig	5 0 0	5 15 0	Narbo	Nathan
13 <sup>1</sup> / <sub>2</sub>	5 <sup>1</sup> / <sub>2</sub>	20	4 <sup>1</sup> / <sub>2</sub> × 3 <sup>1</sup> / <sub>2</sub>	7 × 5 <sup>1</sup> / <sub>2</sub>	5	10	0	Halde	5 15 0	Hegar	6 5 0	6 5 0	Natter	
15	6	23	6 <sup>1</sup> / <sub>2</sub> × 4 <sup>1</sup> / <sub>4</sub>	8 × 6	6	0	0	Halma	6 5 0	Helga	6 15 0	6 15 0	Neckar	
18	7 <sup>1</sup> / <sub>8</sub>	28	7 <sup>1</sup> / <sub>2</sub> × 5	9 × 7	7	5	0	Hassan	7 10 0	Helm	8 0 0	8 0 0	Nelda	
20	8	27	8 <sup>1</sup> / <sub>2</sub> × 6 <sup>1</sup> / <sub>2</sub>	10 × 8	8	0	0	Hatto	8 5 0	Heliodor	8 15 0	8 15 0	Nenner	
25	10	34	9 × 7	12 × 10	10	0	0	Hella	..	..	..	..	..	..
31	12	40	12 × 10	14 × 12	14	0	0	Hestia	..	..	..	..	..	..
37	14 <sup>1</sup> / <sub>2</sub>	47	14 × 10	16 × 13	18	0	0	Honduras	..	..	..	..	..	..
44	17 <sup>1</sup> / <sub>2</sub>	57	15 × 12	20 × 15	23	0	0	Horus	..	..	..	..	..	..
52	20 <sup>1</sup> / <sub>2</sub>	67	18 × 12	20 × 18	30	0	0	Hulda	..	..	..	..	..	..
58	23	76	20 × 14	24 × 20	42	0	0	Hutten	..	..	..	..	..	..

Cost of pairing 2 Collinears for Stereoscopic Work is 8/-

## “Collinear”

### SERIES IV.

Full Aperture,  
F 12·5.



Wide-Angle Anastigmat for Architectural, Process Work, and Landscapes.

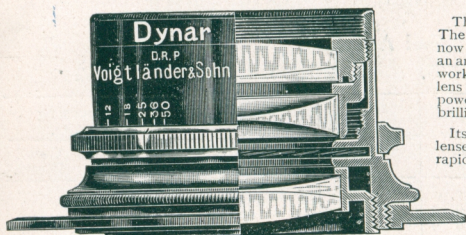
The Wide-angle Collinears give, with full aperture, a field of view of about 85°. When stopped down, 95°.

Equivalent Focus.		Diameter of Lens.	Size of Plate sharply covered.		Price.	Code Word.		
			F 12·5.	Stopped Down.				
cm.	ins.	mm.	ins.	ins.	£	s.	d.	
10·5	4	8·8	4 $\frac{3}{4}$ × 3 $\frac{1}{2}$	6 $\frac{1}{4}$ × 4 $\frac{3}{4}$	3	10	0	Kabale
12	4 $\frac{3}{4}$	10	6 $\frac{1}{4}$ × 4 $\frac{1}{4}$	8 × 6	4	5	0	Kabul
15	6	12	7 × 5	10 $\frac{1}{4}$ × 8 $\frac{1}{4}$	5	0	0	Kallias
18	7 $\frac{1}{2}$	15	9 $\frac{1}{2}$ × 7 $\frac{1}{4}$	12 × 9 $\frac{1}{2}$	5	10	0	Komtur
20	8	16	10 $\frac{1}{4}$ × 8 $\frac{1}{4}$	12 × 10	6	0	0	Kandahar
25	9 $\frac{3}{4}$	21	11 $\frac{1}{2}$ × 9 $\frac{1}{2}$	15 $\frac{3}{4}$ × 11 $\frac{3}{4}$	8	0	0	Kaste
32	12 $\frac{1}{2}$	26	15 $\frac{3}{4}$ × 11 $\frac{3}{4}$	21 $\frac{3}{4}$ × 17 $\frac{3}{4}$	9	10	0	Kondor
44	17 $\frac{1}{2}$	35	21 $\frac{1}{2}$ × 17 $\frac{1}{2}$	27 $\frac{1}{2}$ × 23 $\frac{1}{2}$	13	0	0	Konon
58	22 $\frac{1}{2}$	46	27 $\frac{1}{2}$ × 23 $\frac{1}{2}$	31 $\frac{1}{2}$ × 27 $\frac{1}{2}$	20	0	0	Korfu
80	31 $\frac{1}{2}$	65	31 $\frac{1}{2}$ × 27 $\frac{1}{2}$	39 $\frac{1}{2}$ × 31 $\frac{1}{2}$	32	10	0	Kuno
100	39 $\frac{1}{2}$	80	39 $\frac{1}{2}$ × 31 $\frac{1}{2}$	47 $\frac{1}{2}$ × 35 $\frac{1}{2}$	45	0	0	Kupol





# Voigtländer 'Dynar' Lens.



The "**Dynar**" Lens aperture F 6. The construction of the "Dynar" Lens is now well known amongst amateurs requiring an anastigmat for hand or field camera use, working at a full aperture of F 6. This lens is noted for its great light transmitting power, uniformity of definition, and brilliancy of its pictures.

Its formula consists of three separate lenses so arranged as to obtain extreme rapidity, and is excellently adapted for rapid instantaneous exposures, while its extremely low price brings it within the reach of all serious amateurs.

The "Dynar" Lens can also be had to fit Kodak Cameras mounted in the

same way as the "Collinear" (see page 1082) at the following prices:—

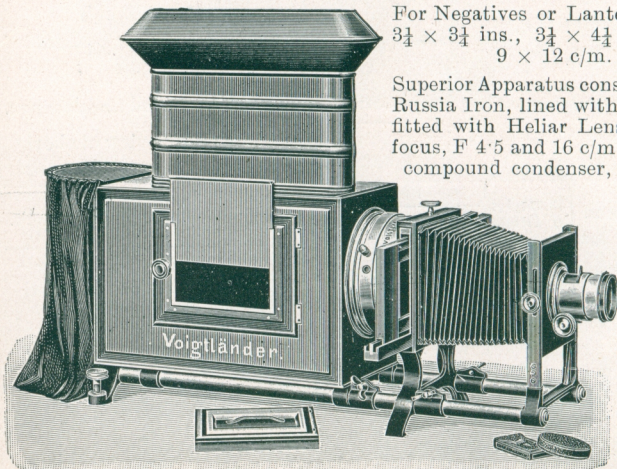
For No. 3 F. P. Kodak "Dynar" F 6 125 m/m .. .. . £4 0 0  
For No. 3a .. .. . F 6 163 m/m .. .. . £4 15 0

Equivalent Focus.	Diameter of Lens.	Size of Plate sharply covered with full aperture.	Ordinary Mount.	Code Word.	Countersunk Mount.		Focussing Mount.	
					Price.	Code Word.	Price.	Code Word.
		<b>F 6.</b>						
c/m	ins.	m/m	ins.	£ s. d.	£ s. d.		£ s. d.	
12	4 $\frac{3}{4}$	21	4 $\frac{3}{4}$ × 3 $\frac{1}{4}$	3 15 0	Dyn	4 0 0	Dynein	4 10 0
13 $\frac{1}{2}$	5 $\frac{1}{2}$	24	5 $\frac{1}{2}$ × 4	4 5 0	Dyro	4 10 0	Dyrocin	5 0 0
15	6	26	6 × 4 $\frac{1}{2}$	4 15 0	Dysis	5 0 0	Dysisein	5 10 0
18	7 $\frac{1}{2}$	32	7 × 5	6 0 0	Dytes	6 5 0	Dytsein	6 15 0

The cost of pairing two "Dynars" for Stereoscopic Work is 8/-

## Voigtländer

## ENLARGING AND PROJECTING APPARATUS.



For Negatives or Lantern Slides 3 $\frac{1}{2}$  × 3 $\frac{1}{2}$  ins., 3 $\frac{1}{2}$  × 4 $\frac{1}{4}$  ins., and 9 × 12 c/m.

Superior Apparatus constructed of Russia Iron, lined with Asbestos, fitted with Heliar Lens, 18 c/m focus, F 4.5 and 16 c/m diameter, compound condenser, £16 10s.

Full particulars of illuminating Apparatus for above upon application.





# Voigtländer Portrait Lenses.

SERIES 'Ia.

Full Aperture F 2.3.

Extra Rapid Objectives for Portraits & Cinematograph Work.

Equivalent Focus.		Diameter of Lens.	Diameter of Usefal Field.	Size of Picture.	Price.	Code Word.
cm.	ins.	mm.	ins.		£ s. d.	
8	3 $\frac{1}{8}$	36	1 $\frac{3}{8}$	Cinematograph C.D.V." Bust C.D.V.f. length Cabinet Bust	6 0 0	Adler
10	4 $\frac{1}{8}$	46	1 $\frac{5}{8}$		6 0 0	Agathe
15	6	64	2 $\frac{1}{8}$		8 0 0	Aller
20	7 $\frac{7}{8}$	84	2 $\frac{3}{4}$		12 0 0	Andora
30	11 $\frac{1}{2}$	128	4		30 0 0	Argus

SERIES I.

Full Aperture F 3.16.

Modified Petzval Lens.

For Portraits and Projection.

Equivalent Focus.		Diameter of Lens.	Suitable for	Price	Code Word.
cm.	ins.	m m.		£ s. d.	
17	6 $\frac{3}{4}$	53	C.D.V. Bust and Children C.D.V. bust and full length Cabinet Boudoir	6 0 0	Barbara
21	8 $\frac{1}{4}$	66		9 0 0	Belisar
25	9 $\frac{1}{2}$	79		13 0 0	Bergamo
31	12	92		18 0 0	Beowulf
40	15	105		24 0 0	Bramarbus

# Portrait Euryscope Lenses.

SERIES III.

Full Aperture F 4.5.

cm.	ins.	mm.		£ s. d.	
17	6 $\frac{3}{4}$	40	C.D.V.	4 10 0	Cadmus
20	7 $\frac{3}{4}$	46	"	5 10 0	Catalonien
22	8 $\frac{1}{2}$	53	"	7 0 0	Catania
28	11	66	Cabinet	10 0 0	Ceder
35	13 $\frac{3}{4}$	79	"	14 0 0	Centaur
40	16	92	Cab. and Boudoir	20 0 0	Certosa
51	20	105	"	26 0 0	Cimon
66	26	135	Boudoir, Imperial. &c.	47 10 0	Cibeles

# Voigtländer Euryscope Lens.

SERIES IVa.

Full Aperture F 7.

Equivalent Focus.		Diameter of Lens.	Size of Plate covered. Stopped Down.	Price.	Code Word.
cm.	ins.	m.m.	ins.	£ s. d.	
15	5 $\frac{3}{4}$	22	4 $\frac{3}{4}$ x 3 $\frac{3}{4}$	3 10 0	Dingo
18	7 $\frac{1}{8}$	27	6 $\frac{1}{4}$ x 4 $\frac{3}{4}$	4 4 0	Divan
20	7 $\frac{3}{8}$	30	7 $\frac{1}{2}$ x 5	4 16 0	Dolman
25	9 $\frac{3}{8}$	38	8 $\frac{1}{2}$ x 6 $\frac{1}{2}$	5 12 0	Dolus
30	11 $\frac{1}{4}$	46	9 x 7	6 18 0	Domina
36	14 $\frac{1}{4}$	55	10 x 8	8 12 0	Dorn

Send for Complete Catalogue to

12, Charterhouse St., Holborn Circus, London, E.C.





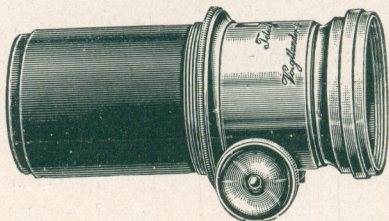
# Voigtländer TELEPHOTOGRAPHIC LENSES

Special Lenses for  
Telephotography.

Every degree of magnification may be obtained, according to the distance the Lens is placed from the plate. The image is from three to four times as large as that obtained by an ordinary Lens of the same focus as the Camera extension. An image ten to twelve times larger than that of the Positive Lens alone, can be obtained sharply defined.

The Telephotographic Lens is recognised as forming an essential part of the Photographer's outfit, as it gives him—within certain limits—a considerable range of foci to make the subject as large as he chooses.

**PRICES.**—The cost of complete Telephoto Lenses may be found by adding the cost of the Positive Lens selected to that of the Telephoto Attachment.



## TELEPHOTO ATTACHMENT.

No.	Price.
1	£4 5 0
2	4 5 0
3	4 15 0
4	5 5 0
5	6 0 0

## SPECIAL TELEPHOTO ATTACHMENTS

FOR HAND CAMERAS,

giving a fixed magnification of  $2\frac{1}{2}$  times.



This Attachment is constructed to fit inside the Camera, an inner flange with thread being fitted to back of Lens enabling the Attachment to be easily put in position when required.

The Lens of the Camera is not interfered with in any way, and owing to the fitting of the Attachment inside, the rigidity of the Apparatus is not affected.

## PRICES.

Attachment suitable for use with Anastigmats, 12 and 13 $\frac{1}{4}$  c/m. £3 0 0  
15 c/m. £3 10 0