



KODAK

The Winter Story

There is an exhilaration to winter pictures that you will be quick to feel. Somehow the tang and snap of the outdoors are reflected in the prints themselves. Kodak keeps the winter story, retains its spirit and, as a final touch, makes each record complete—even to the date and title.

All the Kodaks and all the Folding Brownies are autographic—an exclusively Eastman feature. The picture interest is thus increased for with the date or place written on the film at the time you can never forget the “where” or “when.”

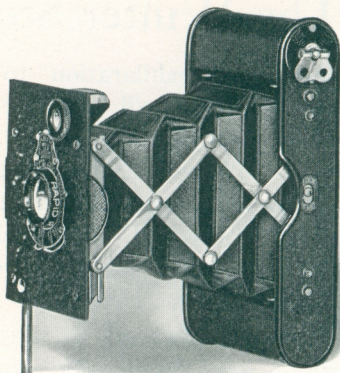
There is no extra charge for autographic film.

Obviously this little booklet can only give you a glimpse at the various Kodak models—they're ready for your inspection at your dealer's.

EASTMAN KODAK COMPANY

ROCHESTER, N. Y.

November 1922



Vest Pocket Autographic KODAKS

(Fixed Focus Models)

Small enough to wear—yet it takes a clear, sharp picture, $1\frac{5}{8} \times 2\frac{1}{2}$ inches in size.

And not only is it so compact that it can always be with you—but it is so quick and easy to operate that it can catch the “hard to get” pictures that come and go almost without warning.

Two models, Regular and Special; three types of lenses, including the Kodak Anastigmat *f.* 7.7.

Specifications

SIZE OF PICTURES: $1\frac{5}{8} \times 2\frac{1}{2}$ inches.

SIZE OF KODAK: $1 \times 2\frac{3}{8} \times 4\frac{3}{4}$ inches.

CAPACITY WITHOUT RELOADING: 8 exposures.

WEIGHT: 11 ounces.

FOCUS: Fixed.

LENSES: *Regular*—Meniscus Achromatic or Rapid Rectilinear, $3\frac{1}{2}$ -inch focus.

Special—Kodak Anastigmat, *f.* 7.7, $3\frac{1}{2}$ -inch focus.

SHUTTER: Kodak Ball Bearing No. 0, with finger release only (cable release attachment sold separately).

SPEEDS: $1/25$, $1/50$ second, and time and "bulb" actions.

FINDER: Brilliant; reversible for vertical or horizontal pictures.

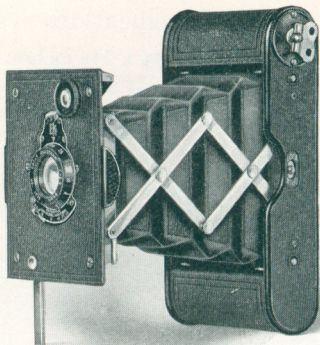
FINISH: Metal parts in nickel and black enamel. All metal body. *Regular*—Japan crystal finish. *Special*—Covered with Morocco grain leather. Black bellows.

MISCELLANEOUS: Autographic feature.

Prices

Vest Pocket Autographic Kodak (regular model), Meniscus Achromatic lens and Kodak Ball Bearing shutter	\$ 6.50
Ditto, with Rapid Rectilinear lens, speed U. S. 8	8.00
Vest Pocket Autographic Kodak <i>Special</i> (fixed focus model), Kodak Anastigmat lens <i>f.</i> 7.7, and Kodak Ball Bearing shutter	12.00
Leather Case for V. P. Kodak	1.00
Soft Leather Carrying Bag	1.50
Leather Case with Carrying Strap	1.25
Belt Carrying Case (russet leather)	1.50
Khaki Belt Carrying Case75
Autographic Film Cartridge, 8 exposures (No. A127)25
Vest Pocket Cable Release Attachment50
Vest Pocket Kodak Tripod Adapter50
Kodak Portrait Attachment (see page 32)75
Kodak Self Timer (see page 32)	1.25

The prices of cameras and film include the Excise Tax



Vest Pocket Autographic KODAK *Special*

(Focusing Model)

This model has combined the advantages of adjustable focus and superior lens equipment usually found in large cameras only, with the convenience of Vest Pocket size.

A turn of the lens flange adjusts the focus for ten different distances from 100 feet for distant views down to three for portraits, without the portrait attachment, while the Kodak Anastigmat lens

f. 6.9 yields sharp, clear-cut negatives that readily lend themselves to enlarging.

Specifications

SIZE OF PICTURES: $1\frac{5}{8} \times 2\frac{1}{2}$ inches.

SIZE OF KODAK: $1 \times 2\frac{3}{8} \times 4\frac{3}{4}$ inches.

CAPACITY WITHOUT RELOADING: 8 exposures.

WEIGHT: 11 ounces.

FOCUS: Adjustable.

LENS: Kodak Anastigmat, *f.* 6.9, $3\frac{1}{2}$ -inch focus.

SHUTTER: Kodak Ball Bearing No. 0, with finger release only (cable release attachment sold separately).

SPEEDS: $1/25$, $1/50$ second, and time and "bulb" actions.

FINDER: Brilliant; reversible for vertical or horizontal pictures.

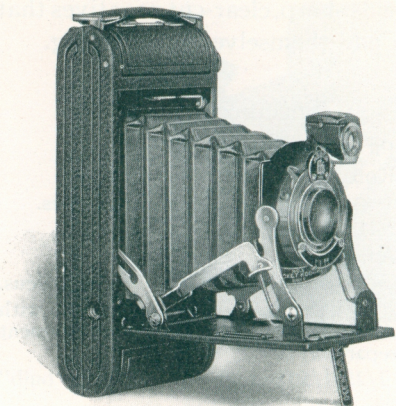
FINISH: Metal parts in nickel and black enamel. All metal body covered with Morocco grain leather. Black bellows.

MISCELLANEOUS: Autographic feature.

Prices

Vest Pocket Autographic Kodak <i>Special</i> (focusing model), Kodak Anastigmat lens <i>f.</i> 6.9, and Kodak Ball Bearing shutter	\$18.00
Leather Case for V. P. Kodak	1.00
Soft Leather Carrying Bag	1.50
Leather Case with Carrying Strap	1.25
Belt Carrying Case (russet leather)	1.50
Khaki Belt Carrying Case75
Autographic Film Cartridge, 8 exposures (No. A127)25
Vest Pocket Cable Release Attachment50
Vest Pocket Kodak Tripod Adapter50
Kodak Self Timer (see page 32)	1.25

The prices of cameras and film include the Excise Tax



No. 1 Pocket KODAK Series II

(Fixed Focus Model)

Here is a camera that is ready for the picture as soon as you are. The Self-Erecting front brings the lens into its fixed focus position as the camera bed is dropped, which accounts for the speed and ease of operation that feature this model.

The pictures have excellent quality and the $2\frac{1}{4} \times 3\frac{1}{4}$ inch size is unusually large for such a small camera. The

counter-sunk autographic attachment adds to its compactness and also permits the hand to rest on the camera back while the record is written.

Specifications

SIZE OF PICTURES: $2\frac{1}{4} \times 3\frac{1}{4}$ inches.

SIZE OF KODAK: $1\frac{5}{16} \times 3\frac{1}{16} \times 6\frac{7}{16}$ inches.

CAPACITY WITHOUT RELOADING: 6 exposures.

WEIGHT: 15 ounces.

FOCUS: Fixed.

LENS: Single Achromatic.

SHUTTER: Kodak Ball Bearing No. 1 with finger release only, (cable release attachment sold separately).

SPEEDS: $1/25$, $1/50$, $1/100$ second, and time and "bulb" actions.

FINDER: Brilliant; reversible for vertical or horizontal pictures.

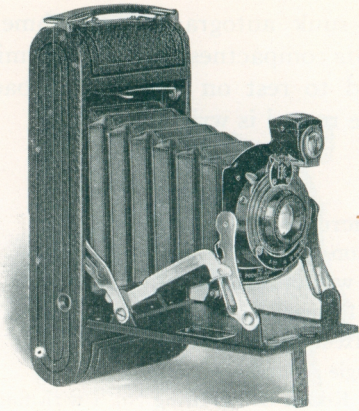
FINISH: Metal parts in nickel and black Crystal Japan. Aluminum body covered with Levant grain leather. Black bellows.

MISCELLANEOUS: Autographic feature, counter-sunk. Two tripod sockets.

Prices

No. 1 Pocket Kodak, Series II, with single Achromatic lens and Kodak Ball Bearing shutter	\$13.50
Black Sole Leather Case, with strap	3.25
Autographic Film Cartridge, 6 exposures (No. A120)25
Kodak Portrait Attachment (see page 32)75
Kodak Self Timer (see page 32)	1.25
Cable Release Attachment35

The prices of cameras and film include the Excise Tax



No. 1 Pocket KODAK Series II

(Focusing Model)

Easy to carry and quick to get into operation, this new Kodak is especially desirable for every-day photography. A turn of the lens flange sets the focus at any of the seven distances from 5 to 100 feet, while the Kodak Anastigmat lens *f.* 7.7 with its ample focal length and optical correctness gives good perspective and a sharp picture from corner to corner.

The lens is ready for focusing as soon as the camera is opened as the Self-Erecting front automatically brings it into picture-making position when the bed is dropped.

Specifications

SIZE OF PICTURES: $2\frac{1}{4} \times 3\frac{1}{4}$ inches.

SIZE OF KODAK: $1\frac{5}{16} \times 3\frac{1}{16} \times 6\frac{7}{16}$ inches.

CAPACITY WITHOUT RELOADING: 6 exposures.

WEIGHT: 17 ounces.

FOCUS: Adjustable.

LENS: Kodak Anastigmat, *f.* 7.7, $4\frac{1}{4}$ -inch focus.

SHUTTER: Kodak Ball Bearing No. 1 with finger release only, (cable release attachment sold separately).

SPEEDS: $1/25$, $1/50$, $1/100$, and time and "bulb" actions.

FINDER: Brilliant; reversible for vertical or horizontal pictures.

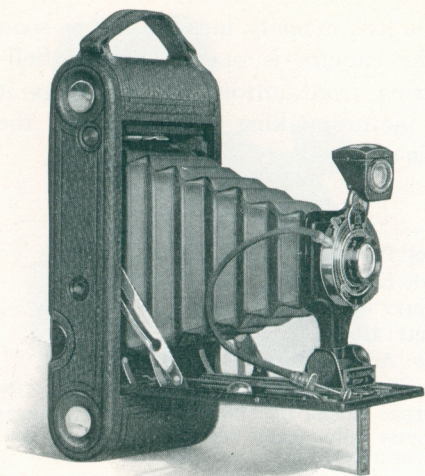
FINISH: Metal parts in nickel and black Crystal Japan. Aluminum body covered with Levant grain leather. Black leather bellows.

MISCELLANEOUS: Autographic feature, counter-sunk. Two tripod sockets.

Prices

No. 1 Pocket Kodak, Series II, with Kodak Anastigmat lens <i>f.</i> 7.7 and Kodak Ball Bearing shutter	\$20.00
Black Sole Leather Case, with strap.	3.25
Autographic Film Cartridge, 6 exposures (No. A120)	.25
Kodak Portrait Attachment (see page 32)75
Kodak Self Timer (see page 32)	1.25
Cable Release Attachment35

The prices of cameras and film include the Excise Tax



Nos. 1 and 1A Autographic KODAK Juniors

Kodak Juniors offer only those features that are necessary to good results and, naturally enough, successful picture-making becomes all the easier. They are high grade cameras, as their neat appearance and careful construction testify.

The choice of lens equipment in the adjustable focus models includes the Kodak Anastigmat *f.* 7.7.

Specifications

SIZE OF PICTURES: No. 1, $2\frac{1}{4} \times 3\frac{1}{4}$ inches; No. 1A, $2\frac{1}{2} \times 4\frac{1}{4}$ inches.

SIZE OF KODAK: No. 1, $1\frac{7}{16} \times 3\frac{5}{8} \times 6\frac{5}{8}$ inches. No. 1A, $1\frac{5}{8} \times 3\frac{3}{4} \times 8$ inches.

CAPACITY: No. 1, 6; No. 1A, 12 exposures.

WEIGHT: No. 1, $21\frac{1}{2}$; No. 1A, $27\frac{1}{2}$ ounces.

FOCUS: Fixed (with Meniscus Achromatic lens only); or Adjustable (with any listed lens).

LENSES: Meniscus Achromatic; Rapid Rectilinear, No. 1, $4\frac{1}{4}$ -inch focus, No. 1A, $5\frac{1}{4}$ -inch focus; or Kodak Anastigmat, *f.* 7.7, No. 1, $4\frac{1}{3}$ -inch focus, No. 1A, $5\frac{1}{4}$ -inch focus.

SHUTTER: Kodak Ball Bearing with cable and finger release.

SPEEDS: No. 1, $1/25$, $1/50$ second; with Kodak Anastigmat lens *f.* 7.7, $1/25$, $1/50$ and $1/100$ second; No. 1A, $1/25$, $1/50$ and $1/100$ second. Both with time and "bulb" actions.

FINDER: Brilliant; reversible for vertical or horizontal pictures.

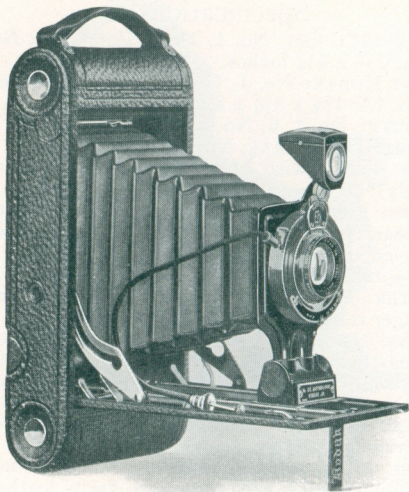
FINISH: Metal parts in nickel and black enamel. Body covered with fine seal grain leather. Black bellows.

MISCELLANEOUS: Autographic feature. Two tripod sockets.

Prices

	No. 1	No. 1A
Autographic Kodak Junior (fixed focus)	Jr.	Jr.
Meniscus Achromatic lens and Kodak Ball Bearing shutter	\$12.00	\$13.00
Autographic Kodak Junior (focusing model, with scale), Meniscus Achromatic lens and Kodak Ball Bearing shutter	12.00	13.00
Ditto, with Rapid Rectilinear lens	14.00	15.00
Ditto, with Kodak Anastigmat lens <i>f.</i> 7.7	19.00	20.00
Black Sole Leather Case, with strap	3.50	3.50
Soft Leather Bag, with strap	2.00	2.25
Autographic Film Cartridge, 12 exposures (No. A116) for No. 1A		.60
Ditto, 6 exposures (No. A120) for No. 1; (No. A116) for No. 1A	.25	.30
Kodak Portrait Attachment (see p. 32)	.75	.75
Kodak Self Timer (see page 32)	1.25	1.25

The prices of cameras and film include the Excise Tax



No. 2C Autographic KODAK Junior

The size of the picture and the way it is made, account for the popularity of the 2C Junior. The $2\frac{7}{8} \times 4\frac{7}{8}$ inch size is just right to include the whole view, while the tested lenses and shutter equipment make every detail of the photographs sharp and clear. When equipped with the Kodak Anastigmat lens *f.* 7.7 and the seven speed Ilex Universal Shutter this model is especially efficient.

Specifications

SIZE OF PICTURES: $2\frac{7}{8}$ x $4\frac{7}{8}$ inches.

SIZE OF KODAK: $1\frac{3}{4}$ x $4\frac{3}{8}$ x $8\frac{3}{4}$ inches.

CAPACITY WITHOUT RELOADING: 10 exposures.

WEIGHT: 34 ounces.

FOCUS: Adjustable only, with automatic focusing lock.

LENSES: Meniscus Achromatic; Rapid Rectilinear, $5\frac{1}{2}$ -inch focus; or Kodak Anastigmat *f.* 7.7, $5\frac{1}{2}$ -inch focus.

SHUTTER: Kodak Ball Bearing, with cable and finger release.

SPEEDS: $1/25$, $1/50$, and $1/100$ second, and time and "bulb" actions; Ilex Universal Shutter with anastigmat equipment only. Speeds: 1, $1/2$, $1/5$, $1/10$, $1/25$, $1/50$, $1/100$ second with time and "bulb" actions.

FINDER: Brilliant; reversible for vertical or horizontal pictures.

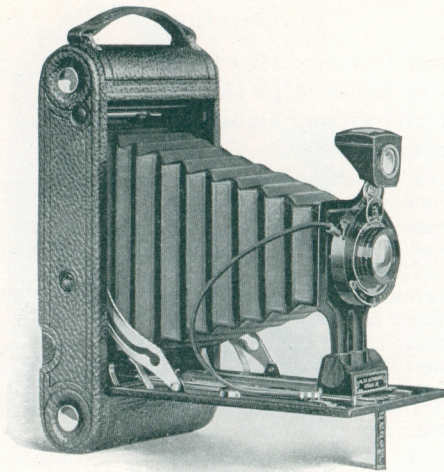
FINISH: Metal parts in nickel and black enamel. Back and bed of aluminum, covered with fine seal grain leather. Black bellows.

MISCELLANEOUS: Autographic feature. Two tripod sockets.

Prices

No. 2C Autographic Kodak Junior, with Meniscus Achromatic lens and Kodak Ball Bearing shutter	\$16.00
Ditto, with Rapid Rectilinear lens	18.00
Ditto, with Kodak Anastigmat lens <i>f.</i> 7.7	23.00
Ditto, with Kodak Anastigmat lens <i>f.</i> 7.7 and Ilex Universal shutter	27.00
Black Sole Leather Case, with strap	4.00
Soft Leather Carrying Bag, with strap	2.50
Autographic Film Cartridge, 10 exposures (No. A130)	.75
Ditto, 6 exposures	.45
Kodak Portrait Attachment (see page 32)	.75
Kodak Self Timer (see page 32)	1.25

The prices of cameras and film include the Excise Tax



No. 3A Autographic KODAK Junior

The 3A Junior takes the largest size picture practical in hand photography—post card size—yet it is light and compact. And Kodak workmanship assures its reliability.

Although excellent results can be obtained with either the Meniscus Achromatic or Rapid Rectilinear lenses, this

camera has proved to be most popular when equipped with the high grade Kodak Anastigmat lens *f.* 7.7.

Specifications

SIZE OF PICTURES: $3\frac{1}{4} \times 5\frac{1}{2}$ inches.

SIZE OF KODAK: $1\frac{15}{16} \times 5\frac{1}{8} \times 9\frac{3}{4}$ inches.

CAPACITY WITHOUT RELOADING: 10 exposures.

WEIGHT: 37 ounces.

FOCUS: Adjustable only, with automatic focusing lock.

LENSES: Meniscus Achromatic; Rapid Rectilinear, $6\frac{3}{4}$ -inch focus; or Kodak Anastigmat *f.* 7.7, $6\frac{3}{4}$ -inch focus.

SHUTTER: Kodak Ball Bearing No. 2, with cable and finger release.

SPEEDS: $1/25$, $1/50$ and $1/100$ second, and time and "bulb" actions. Ilex Universal Shutter with Anastigmat equipment only.

SPEEDS: 1, $1/2$, $1/5$, $1/25$, $1/50$, $1/100$ second with time and "bulb" actions.

FINDER: Brilliant; reversible for vertical or horizontal pictures.

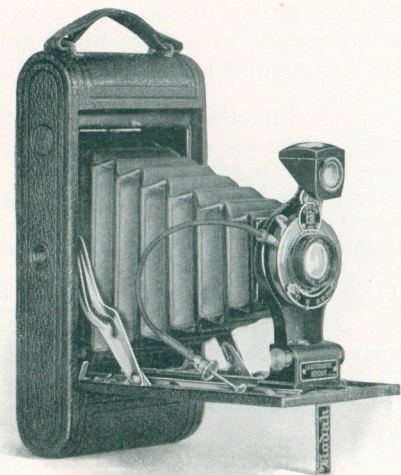
FINISH: Metal parts in nickel and black enamel. Back and bed of aluminum, covered with fine seal grain leather. Black bellows.

MISCELLANEOUS: Autographic feature. Two tripod sockets.

Prices

No. 3A Autographic Kodak Junior, with Meniscus Achromatic lens	\$17.50
Ditto, with Rapid Rectilinear lens	20.00
Ditto, with Kodak Anastigmat lens <i>f.</i> 7.7	25.00
Ditto, with Kodak Anastigmat lens <i>f.</i> 7.7 and Ilex Universal shutter	29.00
Black Sole Leather Carrying Case, with strap	4.25
Soft Leather Carrying Bag	3.00
Autographic Film Cartridge, 10 exposures (No. A122)90
Ditto, 6 exposures55
Kodak Portrait Attachment (see page 32)75
Kodak Self Timer (see page 32)	1.25

The prices of cameras and film include the Excise Tax



No. 1A Autographic KODAK

The 1A is a model that will please you at first sight and keep on pleasing you with pictures.

The care that has been given to its design and manufacture is reflected in the way it looks and the way it works.

Typical of the attention that has been given to every detail of this camera is the

special construction of the back for easy loading.

Among the lens equipments is offered the Kodak Anastigmat *f.* 7.7.

Specifications

SIZE OF PICTURES: $2\frac{1}{2} \times 4\frac{1}{4}$ inches.

SIZE OF KODAK: $1\frac{5}{8} \times 3\frac{3}{4} \times 8$ inches.

CAPACITY WITHOUT RELOADING: 12 exposures.

WEIGHT: 27 ounces.

FOCUS: Adjustable only, with automatic focusing lock.

LENSES: Rapid Rectilinear, $5\frac{1}{4}$ -inch focus; or Kodak Anastigmat *f.* 7.7, $5\frac{1}{4}$ -inch focus.

SHUTTER: Kodak Ball Bearing, with cable and finger release.

SPEEDS: $1/25$, $1/50$ and $1/100$ second, and time and "bulb" actions.

FINDER: Brilliant; reversible for vertical or horizontal pictures.

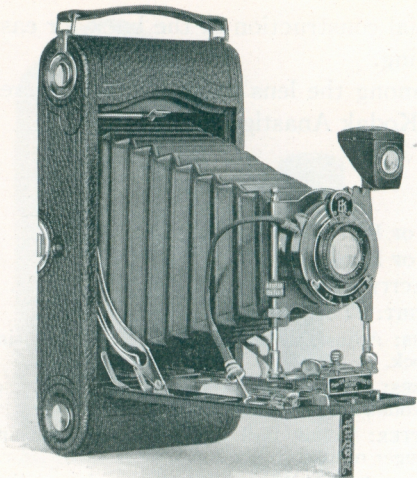
FINISH: Metal parts in nickel and black enamel. Back and bed of aluminum, covered with Levant grain leather. Black leather bellows.

MISCELLANEOUS: Autographic feature. Two tripod sockets.

Prices

No. 1A Autographic Kodak, with Rapid Rectilinear lens and Kodak Ball Bearing shutter	\$19.00
Ditto, with Kodak Anastigmat lens <i>f.</i> 7.7	24.00
Black Sole Leather Case, with strap	3.50
Soft Leather Carrying Bag, with strap	2.25
Autographic Film Cartridge, 12 exposures (No. A116)	.60
Ditto, 6 exposures	.30
Kodak Portrait Attachment (see page 32)	.75
Kodak Self Timer (see page 32)	1.25

The prices of cameras and film include the Excise Tax



Nos. 3 and 3A Autographic KODAKS

These models are designed to meet the needs of the amateur who desires completeness in a camera and at the same time compactness.

The rising front permits the lens to be raised, lowered, or moved from right to left so as to include, without distortion of lines, more picture where you want it.

Specifications

SIZE OF PICTURES: No. 3, $3\frac{1}{4} \times 4\frac{1}{4}$ inches; No. 3A, $3\frac{1}{4} \times 5\frac{1}{2}$ inches.

SIZE OF KODAK: No. 3, $1\frac{3}{4} \times 4\frac{1}{2} \times 7\frac{1}{2}$ inches; No. 3A, $2 \times 4\frac{3}{4} \times 9\frac{1}{2}$ inches.

CAPACITY: No. 3, 12; No. 3A, 10 exposures.

WEIGHT: No. 3, 30 ounces; No. 3A, 41 ounces.

FOCUS: Adjustable, automatic focusing lock; No. 3A has double scale for film or plates.

LENSES: For details see price list below.

SHUTTER: Kodak Ball Bearing, 1/25, 1/50 and 1/100 second; Ilex Universal on 3A with Anastigmat equipment only, seven speeds, 1/100 to 1 second. Time and "bulb" actions. Cable and finger release on both.

FINDER: Brilliant; reversible.

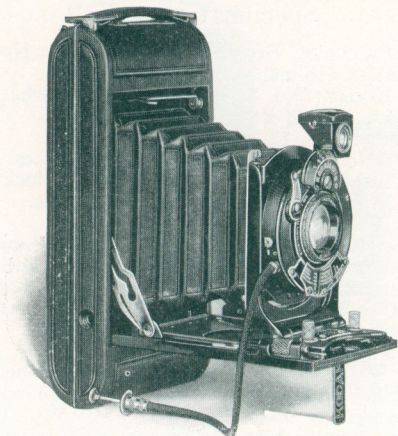
FINISH: Metal parts in nickel and black enamel. Back and bed of aluminum, covered with seal grain leather. Black bellows.

MISCELLANEOUS: Autographic. Two tripod sockets. Rising, falling, and sliding front. Combination back for plates or cut film.

Prices

Autographic Kodak, Rapid Rectilinear lens, $5\frac{1}{4}$ -inch focus on No. 3; $6\frac{1}{2}$ -inch focus on No. 3A, Kodak Ball Bearing Shutter.	No. 3	No. 3A
	\$19.00	\$22.50
Ditto with Kodak Anastigmat lens. <i>f.</i> 7.7, $5\frac{1}{4}$ -inch focus on No. 3; $6\frac{1}{2}$ inch focus on No. 3A	24.00	27.50
Ditto with Kodak Anastigmat lens <i>f.</i> 7.7 and Ilex Universal Shutter		31.50
Black Sole Leather Case, with strap.	3.75	4.50
Soft Leather Carrying Bag	2.50	3.00
Combination Back	4.00	4.00
Double Glass Plate Holders, each	1.50	1.50
Kodak Cut Film Sheaths, each10	.15
Kodak Cut Film, package of 1267	.93
Autographic Film Cartridges, 12 exposures (No. A118) for No. 3; 10 exposures (No. A122) for No. 3A90	.90
Ditto, 6 exposures45	.55
Kodak Portrait Attachment, (see page 32)75	.75
Kodak Self Timer (see page 32)	1.25	1.25

The prices of cameras and film include the Excise Tax



No. 1 Autographic KODAK *Special*

The No. 1 *Special* with its accurate seven speed Kodamatic shutter and sharp-cutting Kodak Anastigmat lens *f.* 6.3, has all the equipment and picture taking proficiency of a large camera, yet it is just about as small as your hand. It is smart in design with convenience emphasized—for example, the counter-sunk autographic attachment which makes

the back of the camera smooth and permits the hand to rest flat while writing on the film.

Specifications

SIZE OF PICTURES: $2\frac{1}{4}$ x $3\frac{1}{4}$ inches.

SIZE OF KODAK: $1\frac{5}{16}$ x $3\frac{1}{16}$ x $6\frac{7}{16}$ inches.

CAPACITY WITHOUT RELOADING: 6 exposures.

WEIGHT: 18 ounces.

FOCUS: Adjustable only, with screw focusing device.

LENSES: For details see price list below.

SHUTTER: Kodamatic, with cable release.

SPEEDS: Seven, from 1/200 to 1/2 second with time and "bulb" actions.

FINDER: Brilliant; reversible for vertical or horizontal pictures.

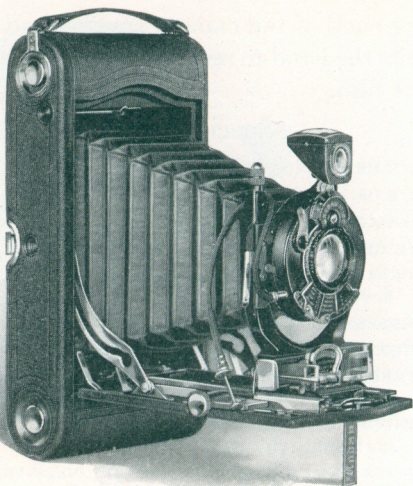
FINISH: Metal parts in nickel and black enamel. Aluminum body covered with finest quality genuine sealskin. Black leather bellows.

MISCELLANEOUS: Autographic feature, counter-sunk. Two tripod sockets.

Prices

No. 1 Autographic Kodak <i>Special</i> , with Kodak Anastigmat lens <i>f.</i> 6.3, $4\frac{1}{2}$ -inch focus and Kodamatic shutter	\$50.00
No. 1 Autographic Kodak <i>Special</i> , with Bausch & Lomb Kodak Anastigmat lens <i>f.</i> 6.3, No. 1, $4\frac{1}{4}$ -inch focus, and Kodamatic shutter	62.00
No. 1 Autographic Kodak <i>Special</i> , with Bausch & Lomb Tessar Series IIb, lens <i>f.</i> 6.3, No. 3, $4\frac{1}{2}$ -inch focus and Kodamatic shutter	74.00
No. 1 Autographic Kodak <i>Special</i> , with Bausch & Lomb Tessar Series Ic, lens <i>f.</i> 4.5, No. 12, $3\frac{1}{2}$ -inch focus, and Kodamatic shutter	71.00
Long-grain Leather, Velvet-lined Case, with strap	4.00
Autographic Film Cartridge, 6 exposures (No. A120)	.25
Kodak Portrait Attachment (see page 32)	.75
Kodak Self Timer (see page 32)	1.25

The prices of cameras and film include the Excise Tax



Nos. 1A and 3A Autographic KODAKS *Special*

Like all *Specials*, these two models are built to conform to the quality they put in their pictures. High-grade, high-speed lens and shutter equipment, Kodak Range Finder and rising front give distinction to the cameras and the pictures that they make.

The 3A *Special* may be fitted with Combination Back for use with plates or cut film.

Specifications

SIZE OF PICTURES: No. 1A, $2\frac{1}{2} \times 4\frac{1}{4}$ inches; No. 3A, $3\frac{1}{4} \times 5\frac{1}{2}$ inches.

SIZE OF KODAK: No. 1A, $1\frac{5}{8} \times 3\frac{3}{4} \times 8$ inches; No. 3A, $2 \times 4\frac{3}{4} \times 9\frac{1}{2}$ inches.

CAPACITY: No. 1A, 12; No. 3A, 10 exposures.

WEIGHT: No. 1A, 34 ounces; No. 3A, 42 ounces.

FOCUS: Adjustable, with rack and pinion.

LENSES AND SHUTTERS: See price list below.

SPEEDS: Kodamatic, seven; No. 1A, $1/200$ to $1/2$ second; No. 3A, $1/150$ to $1/2$ second.

FINDER: Brilliant; reversible.

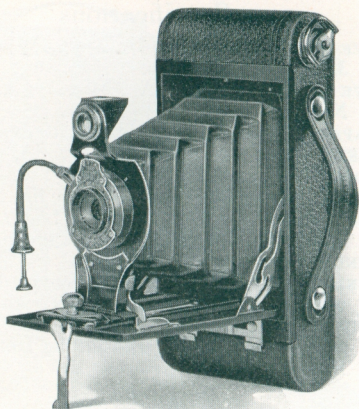
FINISH: Aluminum body. No. 1A covered with genuine sealskin; No. 3A, with Persian Morocco.

MISCELLANEOUS: Autographic feature. Two tripod sockets. Rising and falling front. Kodak Range Finder.

Prices

	No. 1A	No. 3A
Autographic Kodak <i>Special</i> , with Kodak Anastigmat lens <i>f.</i> 6.3, 5-inch focus on No. 1A; $6\frac{3}{4}$ -inch focus on No. 3A; and Kodamatic shutter	\$60.00	\$70.00
Ditto, with Ilex Acme or Optimo shutter	50.00	60.00
Ditto, with Bausch & Lomb Kodak Anastigmat lens <i>f.</i> 6.3 No. 2, $5\frac{1}{4}$ -inch focus on No. 1A; lens No. 4, $6\frac{3}{4}$ -inch focus on No. 3A; and Kodamatic shutter	73.00	90.00
Ditto, with Ilex Acme or Optimo shutter	63.00	80.00
Ditto, with Bausch & Lomb Tessar Series IIb Anastigmat lens <i>f.</i> 6.3, No. 4, $5\frac{1}{4}$ -inch focus on No. 1A; lens No. 5K, $7\frac{1}{4}$ -inch focus on No. 3A; and Kodamatic shutter	81.00	100.00
Ditto, with Ilex Acme or Optimo shutter	71.00	90.00
Grain Leather, Velvet-lined Case	4.75	5.50
Soft Leather Carrying Bag	2.25	3.00
Combination Back		5.00
Double Glass Plate Holders, each		1.50
Kodak Cut Film Sheaths		.15
Kodak Cut Film, package of 12		.93
Autographic Film Cartridge, 12 exposures (No. A116) for No. 1A; 10 exposures (No. A122) for No. 3A	.60	.90
Ditto, 6 exposures	.30	.55
Kodak Portrait Attachment (see p. 32)	.75	.75
Kodak Self Timer (see page 32)	1.25	1.25

The prices of cameras and film include the Excise Tax



Nos. 2 and 2A Folding Autographic BROWNIES

These two models have the substantial construction, simplicity and small cost that feature all Brownies. In addition, they are autographic. Adjustable focus, tested lenses, and the regular Kodak Ball Bearing Shutter equipment account for the splendid pictures that either will produce.

Specifications

SIZE OF PICTURES: No. 2, $2\frac{1}{4} \times 3\frac{1}{4}$ inches; No. 2A, $2\frac{1}{2} \times 4\frac{1}{4}$ inches.

SIZE OF CAMERAS: No. 2, $1\frac{1}{4} \times 3\frac{1}{8} \times 6\frac{1}{2}$ inches; No. 2A, $1\frac{7}{16} \times 3\frac{3}{8} \times 7\frac{7}{8}$ inches.

CAPACITY WITHOUT RELOADING: No. 2, 6 exposures; No. 2A, 12 exposures.

WEIGHT: No. 2, 19 ounces; No. 2A, $25\frac{1}{2}$ ounces.

FOCUS: Adjustable, with automatic focusing lock.

LENSES: Meniscus Achromatic; or Rapid Rectilinear; No. 2, $3\frac{3}{4}$ -inch focus; No. 2A, 5-inch focus.

SHUTTER: Kodak Ball Bearing, with Autotime scale and cable and finger release.

SPEEDS: No. 2, $1/25$ and $1/50$ second; No. 2A, $1/25$, $1/50$ and $1/100$ second, with time and "bulb" actions.

FINDER: Ground-glass, reversible for vertical or horizontal pictures.

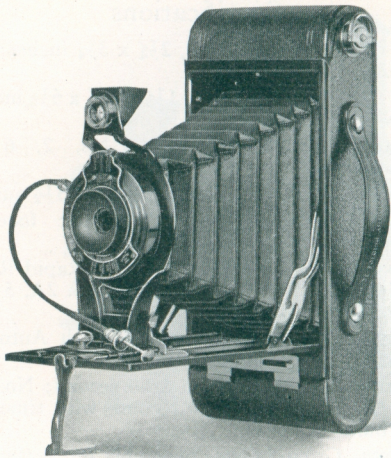
FINISH: Metal parts finished in nickel and black enamel. Metal body covered with durable imitation leather. Black bellows.

MISCELLANEOUS: Autographic feature. Two tripod sockets.

Prices

	No. 2	No. 2A
Folding Autographic Brownie, with Meniscus Achromatic lens and Kodak Ball Bearing shutter	\$ 9.00	\$10.00
Ditto, with Rapid Rectilinear lens	11.00	12.00
Carrying Case, for Folding Autographic Brownie, with strap	1.50	1.60
Autographic Film Cartridges, 12 exposures (No. A116) for No. 2A60
Ditto, 6 exposures (No. A120) for No. 225	
Ditto, 6 exposures, (No. A116) for No. 2A30
Kodak Portrait Attachment (see page 32)75	.75
Kodak Self Timer (see page 32)	1.25	1.25

The prices of cameras and film include the Excise Tax



Nos. 2C and 3A Folding Autographic BROWNIES

Because of the size of the resulting picture and the ease with which it is made, the Nos. 2C and 3A Folding Brownies enjoy deserved popularity.

The lenses are carefully tested, the Kodak Ball Bearing shutters have three automatic snap-shot speeds and, as an exclusive Eastman touch, both cameras are autographic.

Specifications

SIZE OF PICTURES: No. 2C, $2\frac{7}{8}$ x $4\frac{7}{8}$ inches;
No. 3A, $3\frac{1}{4}$ x $5\frac{1}{2}$ inches.

SIZE OF CAMERAS: No. 2C, $1\frac{3}{4}$ x $3\frac{3}{4}$ x $8\frac{11}{16}$ inches;
No. 3A, $1\frac{11}{16}$ x $4\frac{5}{16}$ x $9\frac{5}{16}$ inches.

CAPACITY WITHOUT RELOADING: 10 exposures.

WEIGHT: No. 2C, 27 ounces; No. 3A, 32 ounces.

FOCUS: Adjustable, with automatic focusing lock.

LENSES: Meniscus Achromatic; or Rapid Rectilinear; No. 2C, $5\frac{1}{2}$ -inch focus; No. 3A, $6\frac{1}{4}$ -inch focus.

SHUTTER: Kodak Ball Bearing, with Autotime Scale, and cable and finger release.

SPEEDS: $1/25$, $1/50$ and $1/100$ second; and time and "bulb" actions.

FINDER: Ground-glass; reversible for vertical or horizontal pictures.

FINISH: Metal parts finished in nickel and black enamel. Metal body covered with durable imitation leather. Black bellows.

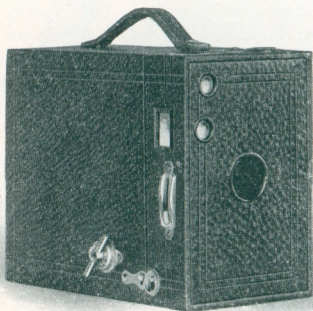
MISCELLANEOUS: Autographic feature. Two tripod sockets.

Prices

	No. 2C	No. 3A
Folding Autographic Brownie, with Meniscus Achromatic lens and Kodak Ball Bearing shutter	\$13.00	\$14.50
Ditto, with Rapid Rectilinear lens	15.00	17.00
Carrying Case, with strap	1.70	1.80
Autographic Film Cartridges, 10 exposures, $2\frac{7}{8}$ x $4\frac{7}{8}$ (No. A130) for No. 2C; 10 exposures, $3\frac{1}{4}$ x $5\frac{1}{2}$ (No. A122) for No. 3A75	.90
Ditto, 6 exposures45	.55
Kodak Portrait Attachment (see page 32)75	.75
Kodak Self Timer (see page 32)	1.25	1.25

The prices of cameras and film include the Excise Tax

Nos. 2, 2A, 3 and 2C BROWNIES



The Brownies have a low cost and simplicity of operation that make them good companions for the children, yet produce such good results that they are highly valued by their grown-up owners. They vary in size, but are constant in reliability.

Specifications

SIZE OF PICTURES: No. 2, $2\frac{1}{4} \times 3\frac{1}{4}$ inches; No. 2A, $2\frac{1}{2} \times 4\frac{1}{4}$ inches; No. 2C, $2\frac{7}{8} \times 4\frac{7}{8}$ inches; No. 3, $3\frac{1}{4} \times 4\frac{1}{4}$ inches.

SIZE OF CAMERAS: No. 2, $3\frac{1}{4} \times 4 \times 5\frac{5}{8}$ inches; No. 2A, $3\frac{7}{16} \times 5\frac{1}{8} \times 6\frac{1}{8}$ inches; No. 2C, $3\frac{7}{8} \times 6\frac{1}{4} \times 7\frac{1}{4}$ inches; No. 3, $4\frac{3}{8} \times 5\frac{1}{8} \times 6\frac{1}{8}$ inches.

CAPACITY: No. 2, 6 exposures; No. 2A, 12 exposures; No. 2C, 10 exposures; No. 3, 12 exposures.

Specifications

WEIGHT: No. 2, 15½ ounces; No. 2A, 19½ ounces; No. 2C, 28 ounces; No. 3, 25 ounces.

FOCUS: Fixed only.

LENSES: No. 2, Meniscus; Nos. 2A, 2C and 3, Meniscus Achromatic.

SHUTTERS: Eastman Rotary; 3 stops and time action.

FINDERS: Two ground-glass, for vertical or horizontal pictures.

FINISH: Metal parts in nickel and black enamel. Body covered with imitation leather.

MISCELLANEOUS: Nos. 2C and 3 have two tripod sockets.

Prices

	No. 2	No. 2A	No. 3	No. 2C
No. 2 Brownie Camera, Meniscus lens, Eastman Rotary shutter	\$2.50			
Nos. 2A, 3 and 2C Brownie Cameras, Meniscus Achromatic lenses, Eastman Rotary shutters		\$3.50	\$4.50	\$5.00
Brownie Carrying Case with strap	1.25	1.50	1.60	1.60
N. C. Film Cartridge, 6 exposures, 2¼ x 3¼ (No. 120) for No. 225			
Ditto, 12 exposures, 2½ x 4¼ (No. 116) for No. 2A; 3¼ x 4¼ (No. 124) for No. 360	.90	
Ditto, 6 exposures30	.45	
Ditto, 10 exposures, 2⅞ x 4⅞ (No. 130) for No. 2C75
Ditto, 6 exposures45
Brownie Tripod Adapter25	.25		
Kodak Portrait Attachment75	.75	.75	.75
Developing and Printing Outfits	1.65	1.65	1.65	1.65

The prices of cameras and film include the Excise Tax

No. 0 BROWNIE



Here is a small camera for small pictures, but it does good work in the simplest possible way at the lowest possible cost.

Specifications

SIZE OF PICTURES: $1\frac{5}{8} \times 2\frac{1}{2}$ inches.

SIZE OF CAMERA: $2\frac{5}{8} \times 3\frac{3}{8} \times 4\frac{1}{8}$ inches.

CAPACITY WITHOUT RELOADING: 8 exposures.

WEIGHT: 8 ounces.

FOCUS: Fixed only.

LENS: Meniscus.

SHUTTER: Eastman Rotary, one stop and time action.

FINDERS: Two ground glass, for vertical or horizontal pictures.

FINISH: Metal parts in nickel and black enamel.
Body covered with imitation leather.

Prices

No. 0 Brownie Camera, Meniscus lens, Eastman Rotary shutter	\$2.00
Brownie Carrying Case	1.00
N. C. Film Cartridge, 8 exposures, $1\frac{5}{8} \times 2\frac{1}{2}$ (No. 127)25
Brownie Tripod Adapter25
Kodak Portrait Attachment75
Developing and Printing Outfit	1.00

The prices of cameras and film include the Excise Tax

Kodak Film Tanks

The advantages of science over guesswork are evident in the quality of the negatives and the ease with which they are developed by the Kodak Film Tanks. Just follow the simple instructions and you will get results that could not be improved upon by experts. And it is all done by daylight.

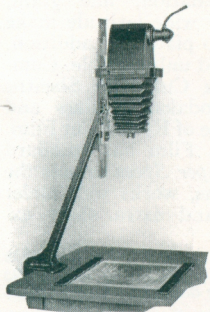


Kodak Film Tanks, \$3.00 up.

Kodak Tank Developer Powders, per ½ dozen, 20 cents to 30 cents.

Kodak Acid Fixing Powders, per lb., 25 cents.

The Kodak Auto-Focus Enlarger



Enlarging can be done as easily and almost as rapidly as contact printing with this new self focusing camera. As the camera is moved up or down to change the size of the enlargement, the image stays sharp.

Attaches to any flat table top—makes prints from 1½ to 3½ diameters from negatives to 4 x 6 inches, 14 x 16 inch print, maximum size. A diffusing disc

is supplied separately for soft focus enlargements.

Kodak Auto-Focus Enlarger with Kodak Anastigmat lens, electric cord and plug and six flexible metal masks, 60 Watt Mazda lamp not included.

Price, including Excise Tax	\$35.00
Diffusing Disc, extra	1.00

Kodak Portrait Attachment



This extra lens fits over the regular lens of the camera and permits "close-ups," without altering the exposure or operation of the camera. It is especially adapted for taking head and shoulder portraits.

Kodak Portrait Attachment \$.75

Kodak Self Timer

The Self Timer operates the camera shutter for you so you can photograph yourself. Just attach it to the cable release and set it to go off after an interval that will allow you to take your position in the picture.

Kodak Self Timer \$1.25

Kodak Cut Film

The qualities of non-halation, fine grain, gradation and exceptionally wide latitude make Kodak Cut Film superior to plates. In addition, it is light, easy to handle and unbreakable. Combination Backs and Kodak Cut Film Sheaths make Nos. 3 and 3A Kodaks, regulars and *Specials*, adaptable to the use of Kodak Cut Film.

The regular Kodak Cut Film has standard speed. Kodak Cut Film *Super Speed* retains the quality of regular emulsions, works well under difficult light conditions and extra short exposures.

	$3\frac{1}{4} \times 4\frac{1}{4}$	$3\frac{1}{4} \times 5\frac{1}{2}$
Kodak Cut Film, per doz.	\$0.67	\$0.93
Kodak Cut Film <i>Super Speed</i> , per doz.77	1.03

Prices of Film include the Excise Tax

EASTMAN KODAK COMPANY

ROCHESTER, N. Y., *The Kodak City*

All prices in this booklet subject to change without notice

TREAT HARDWARE CORPORATION

582-584 ESSEX ST.

LAWRENCE, MASS.