



REXO

"Every Click a Picture"

Burke & James Inc

Manufacturers of

REXO Photo Products

CHICAGO

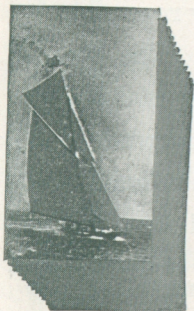
NEW YORK

Why It's "Every Click a Picture" With a Rexo

THE new Rexo Camera brings you *five great improvements* in camera construction. These five features insure a higher percentage of clear, sharp pictures—they simplify photography—they safeguard your picture taking.

These important improvements can all be had in a Rexo—and only in a Rexo. That is why Rexo Cameras stand head and shoulders above ordinary cameras. If you have never owned a camera, or if you want one with which you are sure of getting the best results, choose a Rexo, the Guaranteed Camera.

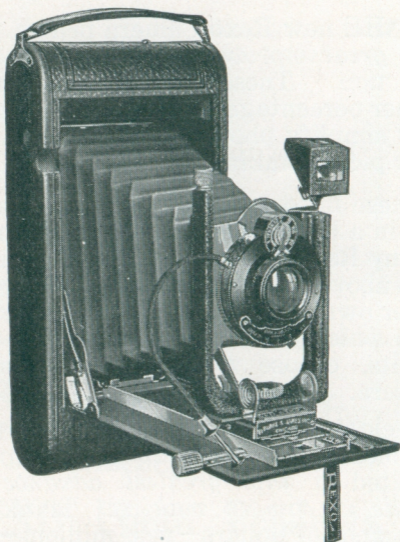
A close scientific study of the needs and troubles of the amateur photographer has resulted in *this greatest advance of the decade in camera making*. Think of the thousands of dollars—yes, millions—wasted in spoiled films and papers. You yourself have probably lost the price of several good cameras—to say nothing of priceless picture opportunities missed. A Rexo can pay for itself in a short time.



"*Every Click a Picture*" tells the frequent successes of Rexo users.

Rexo Cameras, incorporating the distinctive, picture saving features cost no more than other cameras. This booklet describes the Rexoline and the many Rexo Photo Products which add to the joys of amateur photography.

The Five Rexo Features



The *Rexo Masking Finder*. Shows in miniature exactly the *view* you will get in the finished *picture*. Quickly reversible for horizontal or vertical views. The Maltese Cross Finder shows both horizontal and vertical views at the same time, consequently you have to guess. There is no guess-work with the specially designed Rexo Finder. Every Rexo Camera is now equipped with this finder.

The Five Rexo Features

(Continued)

The *Rexo Spool Chambers*. Enable the *faster and easier loading of films*. You can *load* a Rexo with *gloves* on in half the time it takes to load other Cameras. No spool centers to *pull out*.

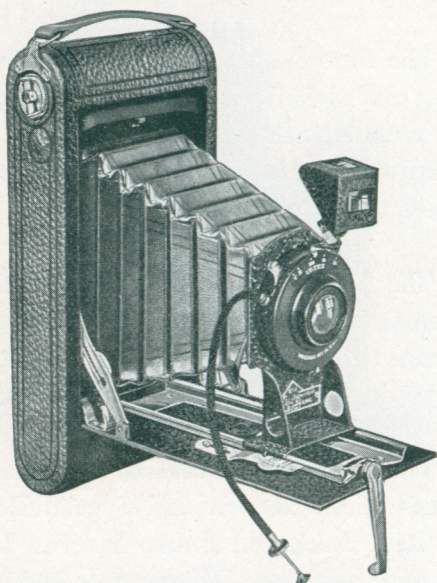
The *Rexo Double Back*. Holds the film in the exact focal plane insuring *sharpness* over the entire film. The film cannot buckle and produce *distortion* in your pictures.

The *Micrometer Focusing Device*. Is a feature of all Regular and Special Rexos. The Rexo Rack and Pinion insures *sharp and clear pictures*. Microscopes and other scientific instruments are *equipped* with a similar focusing device.

Rigid Standard and Broad Track. Insures rigidity where it is most essential. Sure fire focusing is impossible with a wabby standard. Rexo *Construction* overcomes this frequent defect. All Rexo Cameras have *wide tracks* and the *U-shaped* standard is part of all Regular and Special Rexos.

No. 1A Rexo Junior Camera

For Pictures $2\frac{1}{2} \times 4\frac{1}{4}$ Inches



The *No. 1A Rexo Junior* takes pictures $2\frac{1}{2} \times 4\frac{1}{4}$. This is one of most popular amateur sizes, it being equally available for *landscapes, groups and home portraits*

The *No. 1A Rexo Junior* opens vertically and embodies every feature necessary for successful results. It is extremely compact, *handsome in appearance*, and simple in operation.

Equipped with either a Universal Focus, Rapid Rectilinear or F7.5 Anastigmat Lens, it is an *admirable instrument* for the beginner, who desires an efficient, easily operated camera at a very moderate price,

No. 1A Rexo Junior Camera

(Continued)

All lenses are carefully tested by expert opticians and will produce clear, sharp negatives from which beautiful prints and enlargements can be made.

The shutter is automatic and is fitted with flexible wire release.

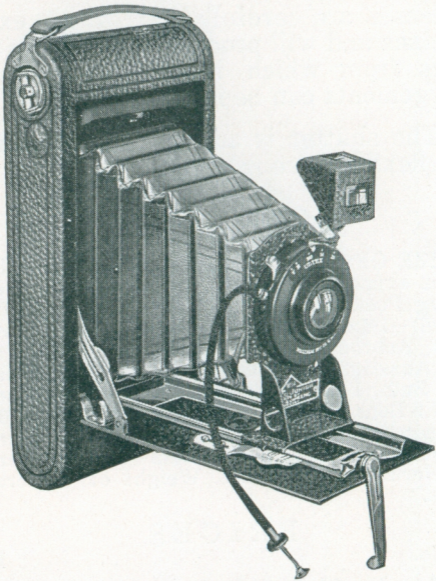
SPECIFICATIONS

SIZE OF PICTURE— $2\frac{1}{2} \times 4\frac{1}{4}$ inches. Films—6 or 12 exposures (No. 425 or 426 Rexo, or No. 1A Folding Pocket Kodak). Dimensions of Camera (Closed)— $1\frac{3}{4} \times 3-13/16 \times 8\frac{1}{4}$ inches. Lens—Universal Focus Achromatic Meniscus, Rapid Rectilinear or F7.5 Anastigmat. Shutter—Ilex, Automatic for Time, Bulb, $1/25$, $1/50$ and $1/100$ second; Wollensak, with 7.5 Lens only, Time, Bulb, $1/10$, $1/25$, $1/50$ and $1/100$ second. Finder—Large Brilliant, Reversible and Dust Proof. Tripod Sockets—Two for Vertical and Horizontal Pictures. Weight of Camera—26 ounces.

PRICES

Cat. No.		Price
A- 77	No. 1A Rexo Junior with Universal Focus Lens.....	\$11.50
A- 78	No. 1A Rexo Junior with Rapid Rectilinear Lens.....	13.00
A- 86	No. 1A Rexo Junior with F7.5 Anastigmat Lens.....	18.00
A-591	Black Sole Leather Carrying Case with Strap.....	3.50
B-664	Rexo Portrait Lens (Formerly Ideal)	1.25
B-586	Rexo Color Filter Series A (Formerly Ingento).....	1.00
D-425	6 Ex. Rexo Speed Film, $2\frac{1}{2} \times 4\frac{1}{4}$ in	.30
D-426	12 Ex. Rexo Speed Film, $2\frac{1}{2} \times 4\frac{1}{4}$ in	.60

Nos. 2C and 3 Rexo Junior Cameras



The *No. 2C Rexo Junior Camera* takes pictures $2\frac{7}{8} \times 4\frac{7}{8}$, a new and popular size, suitable for all kinds of *amateur pictures*. The *No. 3 Rexo Junior Camera* takes pictures $3\frac{1}{4} \times 4\frac{1}{4}$, an ever popular size of pleasing proportions, also especially suitable for making lantern slides by contact. Both cameras are very compact and can be readily carried in the *coat pocket*. They embody every accessory necessary for *quick and accurate work*. Both have the new *Rexo Junior* concealed spool holding device, film aligning plate, masking finder and quick focusing scale.

Nos. 2C and 3 Rexo Junior Cameras (Continued)

The No. 2C and 3 Rexo Juniors are handsome, efficient cameras at a most moderate price. They are supplied with either universal focus, rapid rectilinear or F7.5 anastigmat lens, together with an accurate Ilex or Wollensak Automatic Shutter with flexible wire release.

SPECIFICATIONS

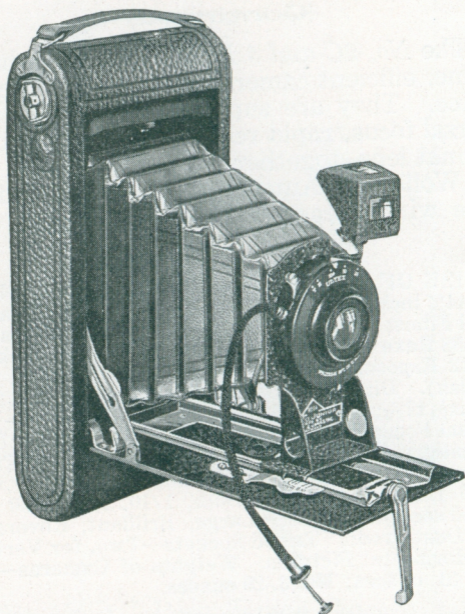
SIZE OF PICTURE—No. 2C, $2\frac{7}{8} \times 4\frac{7}{8}$ and No. 3, $3\frac{1}{4} \times 4\frac{1}{4}$ inches. **Film**—Each Uses Daylight Loading Roll Films; No. 2C takes 6 or 10 Exposures (Nos. 436 or 438 Rexo Film or No. 2C Kodak). No. 3 takes 6 or 12 Exposures (Nos. 430 or 431 Rexo or No. 3 F. Kodak). **Dimension of Camera (Closed)**.—No. 2C— $1\frac{1}{8} \times 4\frac{1}{4} \times 9\frac{1}{16}$; No. 3— $1\frac{3}{4} \times 4\frac{1}{2} \times 8\frac{1}{4}$ inches. **Lens**—Universal Focus Achromatic, Rapid Rectilinear or F7.5 Anastigmat. **Shutter**—Ilex Automatic for Time, Bulb, 1/25, 1/50 and 1/100 second; Wollensak, with F7.5 Lens only, Time, Bulb, 1/10, 1/25, 1/50 and 1/100 second. **Finder**—Large, Brilliant, Reversible and Dust-Proof. **Tripod Sockets**—Two, for Vertical or Horizontal Pictures. **Weights of Cameras**—No. 2C, 31 ounces; No. 3, 29 ounces.

P R I C E S

	No. 2C		No. 3
Rexo Junior with	Cat. No. $2\frac{7}{8} \times 4\frac{7}{8}$	Cat. No.	$3\frac{1}{4} \times 4\frac{1}{4}$
Achromatic Lens.	A- 83	A- 79	\$15.00
Rexo Junior with			
Rapid Rectilinear.	A- 84	A- 80	17.50
Rexo Junior with			
F7.5 Anastigmat.	A- 88	A- 87	21.50
Black Sole Leather			
Carrying Case.	A-575	A-573	3.75
Rexo Color Filter			
Series A.	B-586	B-586	1.00
Rexo Portrait Lens			
(Formerly Ideal).	B-664	B-664	1.25
6 Exposure Roll			
Film.	D-436	D-430	.45
10 Exposure Roll			
Film.	D-438	D-431(12 Ex.)	.90

No. 3A Rexo Junior Camera

(For Pictures $3\frac{1}{4} \times 5\frac{1}{2}$ Inches)



Here is another example of the excellent values offered in the Rexo Line. The *3A Rexo Junior* takes pictures $3\frac{1}{4} \times 5\frac{1}{2}$ inches, the popular *post card size*, excellent for *landscapes, groups and portraits*.

It is offered in three optical equipments; single Achromatic, double Rapid Rectilinear or F7.5 Anastigmat Lens, mounted in an automatic shutter with flexible wire release. Every lens is carefully tested and will produce *clear, sharp pictures*.

No. 3A Rexo Junior Camera

(Continued)

The *3A Rexo Junior* in common with the other numbers of the Junior Line, embodies the *Rexo Self Masking Finder*, double plate back and quick loading spool chambers.

SPECIFICATIONS

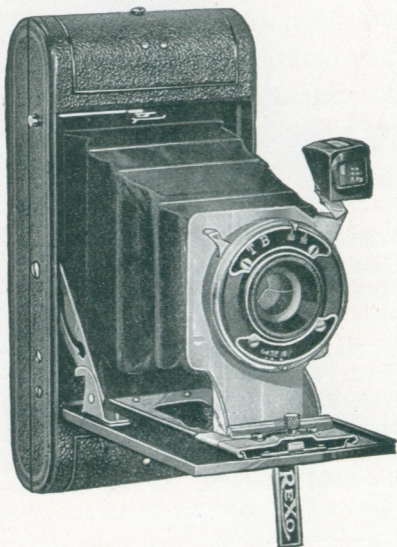
SIZE OF PICTURE— $3\frac{1}{4} \times 5\frac{1}{2}$ inches (Post Card),
 Film—Uses Daylight Loading Roll Film, 6 or 10 exposures (No. 445 and 446 or 3A Folding Pocket Kodak)
 Dimensions of Camera (Closed)— $1\frac{3}{4} \times 5\frac{5}{8} \times 9\frac{1}{2}$ inches.
 Lens—Single Achromatic, Rapid Rectilinear or F7.5 Anastigmat. Shutter—Ilex Automatic for Time, Bulb, 1/25, 1/50 and 1/100; Wollensak, with F7.5 Lens only, Automatic for Time, Bulb, 1/10 1/25, 1/50 and 1/100 second. Finder—Large, Brilliant, Reversible and Dust-Proof. Tripod Sockets—(Two) for Vertical and Horizontal Pictures. Weight of Camera—32 Ounces.

P R I C E S

Cat No.		Price
A- 81	No. 3A Rexo Junior with Achromatic Lens.....	13.50
A- 82	No. 3A Rexo Junior with Rapid Rectilinear Lens.....	19.00
A- 89	No. 3A Rexo Junior with F7.5 Anastigmat Lens.....	23.00
A-574	Black Sole Leather Carrying Case with Strap.....	4.25
B-586	Rexo Color Filter, Series A (Formerly Ingento).....	1.00
B-664	Rexo Portrait Lens (Formerly Ideal)	1.25
D-445	6-Exposure Roll Film, $3\frac{1}{4} \times 5\frac{1}{2}$ in..	.55
D-446	10-Exposure Roll Film.	.90

Vest Pocket Rexo Camera

(For Pictures $1\frac{5}{8} \times 2\frac{1}{2}$ Inches)



The *V. P. Rexo* is a marvel of compactness and photographic efficiency. It weighs only 10 ounces and measures when closed $1 \times 2\frac{3}{8} \times 5\frac{1}{8}$; a true *vest pocket camera*, conveniently carried in any pocket, lady's muff or hand bag. The picture is $1\frac{5}{8} \times 2\frac{1}{2}$, a popular and practical size.

The *V. P. Rexo* is equipped with the famous Rexo one-piece standard operating on a *wide track*, the last word in rigidity. The ingenious finder is a radical departure, being self-framing, only those objects which will be included in the *picture* are visible in the finder whether used vertically or horizontally. Every part locks perfectly, insuring permanent alignment at all times.

Vest Pocket Rexo Camera

(Continued)

This means clear, sharp *pictures* which can be readily enlarged to any desired size.

The optical equipment offers a variety of lenses from the fixed focus achromatic to the most rapid anastigmat. See specifications and price list for details.

The case of the V. P. Rexo is made of *aluminum with a morocco grain leather covering*. It is strong, light and durable, the most substantial and beautiful instrument ever offered.

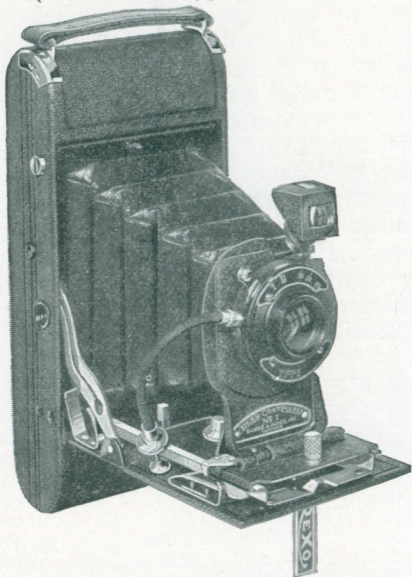
The *V. P. Rexo is a gem*. A camera for every day use that you can have with you at all times; ready for every *photographic opportunity*.

SPECIFICATIONS

SIZE OF PICTURE— $1\frac{5}{8} \times 2\frac{1}{2}$ inches. Film—Day-light Loading Roll Films, 8 exposures (No. 407 *Rexo* or *V. P. Kodak*). Lens—Universal Focus Achromatic Meniscus; Rapid Rectilinear, Anastigmat F7.5 or F6.3; Goerz Dagor F6.8 or Dogmar F4.5. Shutters—Ilex, Time, Bulb, $\frac{1}{25}$, $\frac{1}{50}$ and $\frac{1}{100}$ Seconds; Wollensak Time, Bulb, $\frac{1}{10}$, $\frac{1}{25}$, $\frac{1}{50}$ and $\frac{1}{100}$ seconds; No. 00 Acme, Time Bulb, $\frac{1}{2}$, $\frac{1}{5}$, $\frac{1}{10}$, $\frac{1}{25}$, $\frac{1}{50}$, $\frac{1}{100}$ and $\frac{1}{300}$ seconds. FINDER—Rexo Self Framing, Reversible and Dust Proof. WEIGHT—10 ounces.

Cat. No.	PRICES	Prices
A-350	V. P. Rexo with Universal Focus Achromatic Lens and Ilex Shutter....	\$7.75
A-351	Same, with Rapid Rectilinear Lens...	9.00
A-352	Same with F7.5 Anastigmat.....	13.50
A-353	Same with F6.3 Anastigmat.....	22.50
A-354	V. P. Rexo with F6.3 Anastigmat and Acme Shutter.....	27.50
A-355	V. P. Rexo with F6.8 Goerz Dagor and Acme Shutter.....	64.00
A-357	V. P. Rexo with F4.5 Goerz Dogmar and Ilex Acme Shutter.....	64.00
A-585	Sole Leather Holster Carrying Case..	1.50
A-650	Rexo Portrait Lens (Formerly Ideal)..	1.00
B-500	Rexo Color Filter, Series A (Formerly Ingento..	.75
D-407	Rexo Speed Film $1\frac{5}{8} \times 2\frac{1}{2}$, 8 exposures	.25

No. 1 Coat Pocket
Rexo Camera
(For Pictures $2\frac{1}{4} \times 3\frac{1}{4}$ Inches)



The *Coat Pocket Rexo* is a new departure in camera construction. It is extremely compact, measuring $1\frac{3}{16} \times 3\frac{1}{16} \times 6\frac{9}{16}$ inches. It takes pictures $2\frac{1}{4} \times 3\frac{1}{4}$ inches, one of the *most popular* amateur sizes.

Mechanically and optically correct in all its features, *metal constructed* throughout with *handsome leather covering*. The *Coat Pocket Rexo* is a highly refined camera incorporating the Rexo picture saving features.

Quick loading—The new *Rexo swinging spool holders* enable quick and easy loading.

Rexo Self Masking Finder—A new optical principle is applied in the *construction* of this finder which is the acme of simplicity.

No. 1 Coat Pocket Rexo Camera (Continued)

It shows in miniature the exact view which will be included in the picture, whether taken vertically or horizontally.

The wide track—Insures rigidity and preserves the parallelism between *lens and plane* of the film.

The optical equipment offers a choice of four lens equipments: a *Universal Focus Achromatic*, a selected *Rapid Rectilinear* or *Anastigmat F7.5* and *F6.3* lens mounted in an automatic shutter with flexible wire release.

This camera can be readily carried in the coat or hip pocket or in a lady's hand bag.

SPECIFICATIONS

Size of Picture— $2\frac{1}{4} \times 3\frac{1}{4}$ inches. Film—Daylight Loading Roll Films, 6 Exposures (No. 415 Rexo or No. 2 Brownie Film). Dimensions of Camera (Closed)— $1\frac{3}{16} \times 3\frac{1}{16} \times 6\frac{9}{16}$ in. Lens—Universal Focus Achromatic, Rapid Rectilinear or Anastigmat F7.5, or F6.3. Shutter—Ilex, Automatic for Time, Bulb, 1/25, 1/50 and 1/100 second; Wollensak, with F7.5 and F6.3 lens only, Automatic for Time, Bulb, 1/10, 1/25, 1/50 and 1/100 second and Ilex Acme $\frac{1}{2}$, 1/5, 1/25, 1/50, 1/100, 1/200 and 1/300 second, supplied with F6.3 lens only. Tripod Sockets—Two for Vertical or Horizontal Pictures. Weight—17 ounces.

PRICES

A-370	Rexo Coat Pocket No. 1 with Universal Focus Achromatic Lens	\$11.50
A-371	Same, but with Rapid Rectilinear Lens	13.00
A-372	Same, but with F7.5 Anastigmat	18.00
A-373	Same, but with F6.3 Anastigmat	29.00
A-374	Same, but with Ilex Acme Shutter	35.00
A-587	Black Leather Carrying Case with strap	3.25
B-650	Rexo Portrait Lens (Formerly Ideal)	1.00
B-500	Rexo Color Filter series A (Formerly Ingento)75
D-415	6 Exposures Rexo Speed Film, $2\frac{1}{4} \times 3\frac{1}{4}$ inches25

No. 1A Rexo Camera



The *1A Rexo* is a camera of superb beauty, mechanically and optically perfect in every detail of construction. The size of the picture is $2\frac{1}{2} \times 4\frac{1}{4}$ inches, one of the most popular of all amateur sizes, being equally available for *landscapes, street scenes, groups or single portraits.*

The *1A Rexo* incorporates all the Rexo picture saving features described on page 18.

The lens supplied on the regular equipment is a tested rapid rectilinear, speed F8 (U.S. 4) capable of producing clear, sharply defined pictures, free from distortion. For those who desire a camera of higher optical efficiency at a very moderate price we offer a *highly corrected F7.5 anastigmat.*

No. 1A Rexo Camera

(Continued)

The shutters supplied are the famous Ilex models, *dust and damp proof*, sure-operating and accurate.

SPECIFICATIONS

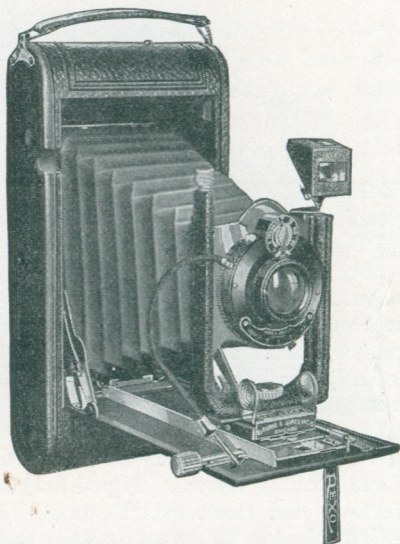
SIZE OF PICTURE— $2\frac{1}{2} \times 4\frac{1}{4}$ inches. Film—Daylight Loading Roll Film, 6 or 12 Exposures (Nos. 425 and 426 Rexo Speed Film). Dimensions—(Closed) $11\frac{3}{8} \times 6\frac{3}{4} \times 8\frac{1}{4}$ inches. Body—Reinforced Aluminum, Covered with Genuine Seal Grain Leather. Back—Sure-locking with Film Aligning Plate. Standard—U-shaped, Operating on Wide Track with Rising and Sliding Adjustments. Lens—Rapid Rectilinear or Anastigmat F7.5. Shutter—Ilex F.8 (U.S. 4) General Automatic for Time, Bulb, 1/100, 1/50, 1/25, 1/10 and 1/5 second. Finder—Brilliant, Reversible with Rexo Masking Device. Tripod Sockets—Two, for Vertical and Horizontal Pictures. Focusing Scale—Self-aligning, Operated by Rack and Pinion. Weight of Camera—32 ounces.

P R I C E S

Cat. No.		Price
A-201	No. 1A Rexo Camera with Ilex General Shutter and Rapid Rectilinear Lens	\$19.00
A-203	No. 1A Rexo Camera with Ilex General Shutter and F7.5 Anastigmat Lens	24.00
A-572	Black Sole Leather Carrying Case with Strap.....	3.50
D-425	6 Exposure Roll Rexo Speed Film— $2\frac{1}{2} \times 4\frac{1}{4}$ inches.....	.30
D-426	12 Exposure Roll Rexo Speed Film— $2\frac{1}{2} \times 4\frac{1}{4}$ inches.....	.60
B-664	Rexo Portrait Lens (Formerly Ideal)	1.25
B-586	Rexo Color Filter, Series A (Formerly Ingento).....	1.00

No. 3 Rexo Camera

For Pictures $3\frac{1}{4} \times 4\frac{1}{4}$ Inches



The *No. 3 Rexo Camera* is a handsome, compact camera making pictures $3\frac{1}{4} \times 4\frac{1}{4}$, a size that is justly popular, being adapted to all classes of amateur work, as well as being particularly suitable for *lantern slides* by contact. The lens and shutter equipment is identical with that supplied on the 1A Rexo.

The No. 3 Rexo incorporates every feature essential to good results. The camera is handsome in appearance, optically and mechanically *correct and accurate*. In addition to the regular lens equipment, the No. 3 is supplied, fitted with a *highly corrected Anasigmat F7.5 Lens* as shown in price list.

No. 3 Rexo Camera

(Continued)

SPECIFICATIONS

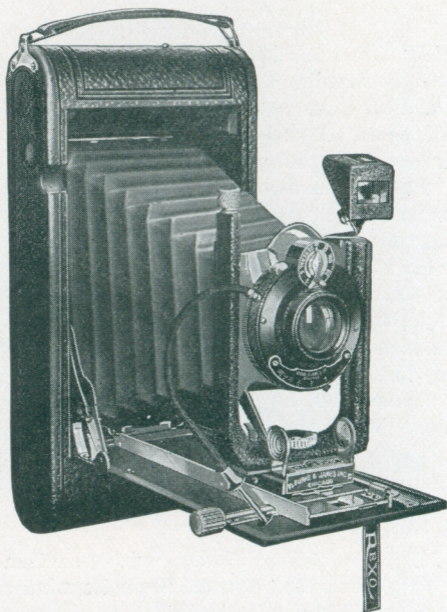
SIZE OF PICTURE— $3\frac{1}{4} \times 4\frac{1}{4}$ inches. Film—Day light Loading Roll Film, 6 or 12 Exposures (Nos. 430 and 431 Rexo Speed Film or No. 3 F. P. Kodak). Dimensions (Closed)— $1\frac{1}{8} \times 4\frac{3}{4} \times 8\frac{1}{4}$ inches. Body—Reinforced Aluminum, covered with Genuine Leather. Back—Sure Locking with Film Aligning Plate. Standard—U-shaped, Operating on Wide Track with Rising and Sliding Adjustments. Lens—Rapid Rectilinear F.8 (U.S.4) or Anastigmat F7.5. Shutter—Ilex General Automatic for Time, Bulb, 1/100, 1/50, 1/25, 1/10 and 1/5 second. Finder—Brilliant, Reversible with Rexo Masking Device. Tripod Sockets—Two, for Vertical and Horizontal Pictures. Focusing Scale—Self Aligning, Operated by Rack and Pinion. Weight of Camera—36 ounces.

P R I C E S

Cat. No.		Price
A-221	No. 3 Rexo Camera with Ilex General Shutter and Rapid Rectilinear Lens.....	\$23.00
A-223	No. 3 Rexo Camera with Ilex General Shutter and F7.5 Anastigmat Lens.....	28.00
A-573	Black Sole Leather Carrying Case with Strap.....	3.75
D-430	6 Exposure Roll, Rexo Speed Film, $3\frac{1}{4} \times 4\frac{1}{4}$ inches.....	.45
D-431	12 Exposure Roll, Rexo Speed Film, $3\frac{1}{4} \times 4\frac{1}{4}$ inches.....	.90
B-664	Rexo Portrait Lens (Formerly Ideal)	1.25
B-586	Rexo Color Filter, Series A (Formerly Ingento.....)	1.00

No. 3A Rexo Camera

For Pictures $3\frac{1}{4} \times 5\frac{1}{2}$ Inches



The *3A Rexo Camera* takes pictures $3\frac{1}{4} \times 5\frac{1}{2}$ inches, the popular *post card size*. It embodies every adjustment which will aid the amateur in producing successful pictures with greatest ease and certainty.

Like the No. 1A and No. 3 Rexo it is equipped with a rigid one-piece *U-shaped Lens standard*, affording the maximum rising and sliding movement. The finder, a special Rexo feature, has a self-masking device, which is instantly adjusted for either vertical or horizontal pictures.

No. 3A Rexo Camera

(Continued)

The optical equipment includes a choice of a double Rapid Rectilinear or an F7.5 Anastigmat. Every lens is rigidly tested for covering power and definition, thus insuring the owner of a Rexo Camera of securing quality results from the very start.

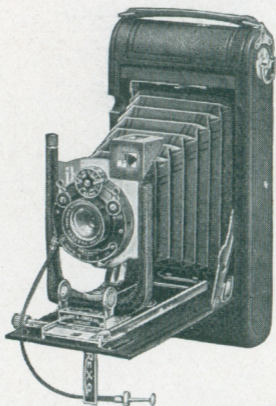
SPECIFICATIONS

Size of Picture— $3\frac{1}{4} \times 5\frac{1}{2}$ inches. Film—Day light Loading Roll Film, 6 or 10 Exposures (Nos. 445 or 446 Rexo Speed Film or No. 3A F. P. Kodak). Dimensions (Closed)— $1-13/16 \times 4\frac{5}{8} \times 9\frac{1}{2}$ inches. Body—Reinforced Aluminum, Covered with Genuine Seal Grain Leather. Back—Sure Locking with Film Aligning Plate. Standard—U-shaped, Operating on Wide Track with Rising and Sliding Adjustments. Lens—Rapid Rectilinear F.8 (U.S.4) or Anastigmat F7.5. Shutter—Ilex General Automatic for Time, Bulb, $1/100$, $1/50$, $1/25$, $1/10$ and $1/5$ second. Finder—Brilliant, Reversible with Rexo Masking Device. Tripod Sockets—Two, for Vertical and Horizontal Pictures. Focusing Scale—Self Aligning, with Rack and Pinion. Weight—42 ounces.

PRICES

Cat. No.		Price
A-240	No. 3A Rexo with Ilex General Shutter and Rapid Rectilinear Lens.....	\$27.00
A-242	No. 3A Rexo with Ilex General Shutter and F7.5 Anastigmat Lens.....	32.00
A-574	Black Sole Leather Carrying Case with Strap.....	4.25
D-445	6 Exposure Roll Rexo Speed Film, $3\frac{1}{4} \times 5\frac{1}{2}$ inches.....	.55
D-446	10 Exposure Roll Rexo Speed Film, $3\frac{1}{4} \times 5\frac{1}{2}$ inches.....	.90
B-651	Rexo Portrait Lens (Formerly Ideal).	1.50
B-501	Rexo Color Filter, Series A (Formerly Ingento).....	1.25

Nos. 1A, 3 and 3A Rexo Specials



These are De Luxe models of the regular Rexo Cameras—a master-piece of the camera makers' art. In appearance the Rexo Special is *superb*; in construction, compact, rigid and mechanically perfect.

The optical equipment offers a choice of famous Anastigmat lenses in an Ilex Acme Shutter.

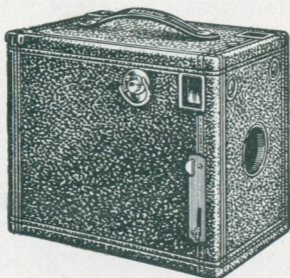
The body is covered with *genuine Persian Morocco leather*.

The general specifications are the same as for the *regular models*.

P R I C E S

	No. 1A	No. 3	No. 3A
	2½x4¼	3¼x4¼	3¼x5½
Rexo Special with F6.3 Anastigmat.....	A-210½ \$51.00	A-230½ \$51.00	A-250½ \$64.00
Same, with F6.3 Tessar Anastigmat.....	A-213 75.00	A-233 75.00	A-253 92.50
Sole Leather Carry Case with Strap.....	A-572 3.50	A-573 3.75	A-574 4.25
6 Exposure Rexo Speed Film.....	D-425 .30	D-430 .45	D-445 .55
12 Exposure Rexo Speed Film.....	D-426 .60	D-431 .90	D-446 10 Ex..90

Rexoette Cameras



Rexoette Cameras are very compact, light and attractive in appearance and make excellent sharp and brilliant pictures with the least possible effort as they require no focusing. Any boy or girl can use the Rexoette successfully. It is suitable for photographing landscapes, street scenes, groups and portraits. Rexoette Cameras are fitted with an accurately adjusted, fine *universal focus meniscus lens*, with three diaphragm stops, automatic shutter for both *time and instantaneous exposures*.

The Nos. 2A, 2C, 3 and 3A are equipped with two *metal bound brilliant view finders* of a large size, for *vertical or horizontal pictures*, insuring a *clear, brilliant image* of subject to be photographed. The new spool holding device insures *quick loading and smooth winding* of the film. The handle strap is made of *solid leather*, of a comfortable size. Built of selected wood and covered with imitation leather. Rexoette Cameras offer the best Box Camera values in America.

Cat. No.		Size of Picture	Size of Camera	Rexo Film	Price
A-98	No. 2	$2\frac{1}{4} \times 3\frac{1}{4}$	$3\frac{5}{8} \times 4\frac{1}{4} \times 5\frac{1}{8}$	No. 415	\$2.50
A-1	No. 2A	$2\frac{1}{2} \times 4\frac{1}{4}$	$3\frac{7}{8} \times 5\frac{1}{4} \times 6\frac{5}{16}$	No. 425	3.50
A-99	No. 2C	$2\frac{7}{8} \times 4\frac{7}{8}$	$4\frac{1}{8} \times 6 \times 7\frac{5}{16}$	No. 436	5.00
A-2	No. 3	$3\frac{1}{4} \times 4\frac{1}{4}$	$4\frac{3}{8} \times 5\frac{1}{4} \times 6\frac{1}{2}$	No. 430	4.50
A-3	No. 3A	$3\frac{1}{4} \times 5\frac{1}{2}$	$4\frac{3}{4} \times 6\frac{5}{8} \times 7\frac{1}{8}$	No. 445	5.50

REXO RECORD FILM

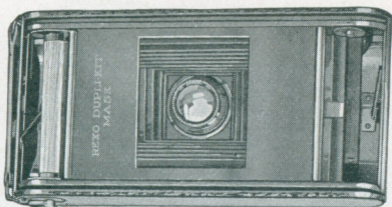


Rexo Speed Films are very rapid, reducing to a minimum your *under exposures*. They are also highly orthochromatic giving superior results in photographing *landscapes, flowers and colored objects*. Rexo Film is *non-halation and non-curling* which makes for brilliant, snappy negatives and easier handling.

It is made in sizes fitting all *popular* makes of cameras. Use Rexo Film and *increase* your percentage of good pictures.

No.	Size	Ex.	For Cameras	Price
407	1 $\frac{5}{8}$ x2 $\frac{1}{2}$	8	V. P. Rexo and others	\$0.25
415	2 $\frac{1}{4}$ x3 $\frac{1}{4}$	6	C. P. Rexo, No. 1 Rexo Jr. and others25
425	2 $\frac{1}{2}$ x4 $\frac{1}{4}$	6	1A Rexo, 1A Rexo Jr. and others30
426	2 $\frac{1}{2}$ x4 $\frac{1}{4}$	12	Same Cameras as No. 42560
430	3 $\frac{1}{4}$ x4 $\frac{1}{4}$	6	No. 3 Rexo, No. 3 Rexo Jr. and others45
431	3 $\frac{1}{4}$ x4 $\frac{1}{4}$	12	Same Cameras as No. 43090
435	3 $\frac{1}{4}$ x4 $\frac{1}{4}$	6	Adapted to No. 3 Brownie . .	.45
436	2 $\frac{7}{8}$ x4 $\frac{7}{8}$	6	No. 2C Rexo Jr. and others . .	.45
438	2 $\frac{7}{8}$ x4 $\frac{7}{8}$	10	Same Cameras as No. 43675
445	3 $\frac{1}{4}$ x5 $\frac{1}{2}$	6	3A Rexo, 3A Rexo Jr. and others55
446	3 $\frac{1}{4}$ x5 $\frac{1}{2}$	10	Same Cameras as No. 44590

Rexo Dupli-Kit



This is a thin metal mask which fits in the *back of the camera*, enabling the taking of *double* the number of pictures *one-half the regular size*. For use with all popular makes of cameras in connection with Rexo Film *only*. Full instructions with each *Dupli-Kit*. Specify name and size of camera when ordering.

Cat. No.	Cat. No. Rexoette Box Cameras	Uses Rexo Film No.	Price Each
Folding Cameras			
A-275	A-285	415	\$0.35
A-276	A-286	425	.35
A-277	A-287	430	.35
A-278	A-288	436	.35
A-279	A-289	445	.35

Rexo Metal Tripods

They are made of *strong brass tubing*, with telescoping legs.

Cat. No.	Sections	Length Extended	Length Closed.	Price Each
A-775	3	44	17	\$2.55
A-776	4	47½	15	2.85
A-777	5	51	14	3.15
A-778	6	50½	12½	3.45

New Improved Rexo Developing Paper



Rexo is a new, *rapid developing paper* meeting every requirement of the Amateur. It gives *snappy, brilliant prints* and can be safely printed without a dark room.

Rexo is made in *four grades and three surfaces*.

Hard—for average amateur negatives; *Normal*—for normal negatives; *Soft*—for hard, contrasty negatives; *Extra Hard*—for thin flat negatives.

The surfaces are *Matte, No Lustre; Semi Matte, Smooth Velvet; and Glossy, Brilliant Glossy*.

PRICES

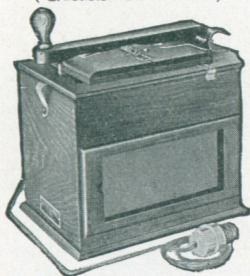
Size	Single Weight		Double Weight	
	Two Dozen	Gross	Two Dozen	Gross
2 1/4 x 3 1/4	\$.015	\$.065	\$.020	\$.080
2 1/2 x 4 1/4	.20	.80	.25	1.00
2 7/8 x 4 7/8	.20	1.05	.25	1.30
3 1/4 x 4 1/4	.20	1.05	.25	1.30
3 1/4 x 5 1/2	.25	1.25	.30	1.55
4 x 5	.30	1.35	.40	1.70
	One Doz.		One Doz.	
5 x 7	.25	2.30	.30	2.90
8 x 10	.55	5.30	.70	6.65
11 x 14	1.00	10.00	1.25	12.50

Other sizes at Proportionate Prices, List on Application.

Rexo Post Cards—3 1/2 x 5 1/2, per dozen \$0.20; per gross \$1.70.

Rexo Rapid Printer, Style F

For Negatives 5x7 or Smaller
(Glass or Film)



The Rexo Rapid Printer is the ideal machine for the amateur. It is supplied with an automatic alternating pilot and printing light knife switch. The pilot ruby bulb is included and the socket for the printing light is standard (bulb not supplied). Standard plug and 45in. of wiring is included. We recommend for printing a 25 or 40 watt Mazda.

The removable ground glass diffusion screen insures even distribution of the printing light. The spring actuated half-opening pressure board with its heavy felt padding, insuring perfect contact between the paper and the negative. The retaining strap for holding the negative and mask (if used) in position on the printing plate.

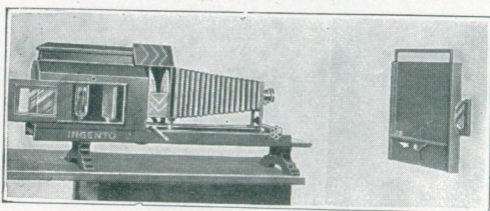
Cat. No. K-805 Rexo Rapid Printer, Style F . . . \$8.00

Amateur Marginal Printing Masks

A set of six thin metal masks are offered those who desire to make prints having a white margin all around. The openings are adapted for use of the following sizes of paper 4x5, 3 $\frac{1}{4}$ x5 $\frac{1}{2}$, 3 $\frac{1}{4}$ x4 $\frac{1}{4}$, 2 $\frac{1}{2}$ x4 $\frac{1}{4}$, 2 $\frac{1}{4}$ x3 $\frac{1}{4}$ and 1 $\frac{5}{8}$ x2 $\frac{1}{2}$ (V.P.)

Cat. No. K-806 Marginal Printing Masks, set of 6 \$2.00

Ingento Enlarging Lanterns



These Lanterns are compact, self-containing, portable, projecting instruments, complete with light burner, condensing lenses, negative holder, etc., are adjustable for making enlargements of any desired size. They are unlimited in their universable adaptability for all kinds of projection work. In addition to enlarging they can also be used for making lantern slides by reduction and as stereopticons for exhibition of lantern slides. This entire instrument with the exception of the bellows and lens board is constructed entirely of metal.

The Style A Outfits 90 degree arc, are supplied with the No. 3 Rheostat, 7 amperes, producing from 500 to 1000 candle power.

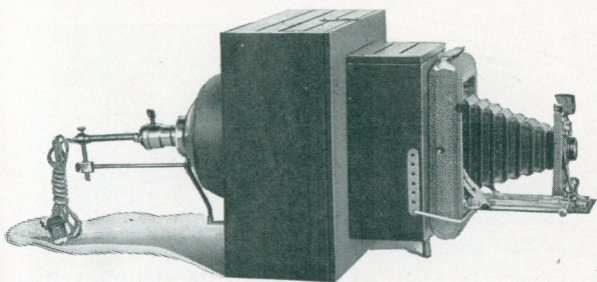
The Style B Outfits are supplied with a 600 Watt Nitrogen Mazda Lamp (concentrated filament) and the Style BB Outfits are supplied with a 1000-Watt Nitrogen Mazda.

These lanterns accommodate 4x5, 3½x5½ and smaller negatives, glass or film.

Descriptive circulars with complete list of Enlarging Lanterns on application. The lanterns are listed in every case without projecting lenses. For best results use Enlarging Rexo.

Cat. No.		Price
G- 52	Style A-1 Enlarging Lantern Outfit, 90° arc, Rheostat, Focusing Platform and Enlarging Easel, but without projecting lens.....	\$105.00
G- 92	Style B-1, Same as above but with 600-watt Mazda lamp.....	105.00
G- 58	Style BB-1, Same as above but with 1000-watt Mazda lamp.....	110.00
G- 62	Style C-1 Lantern only, with 90° arc lamp and No. 3 Rheostat.....	80.00
G- 56	Style J-Same as above but with 600-watt Mazda lamp.....	80.00
G- 94	Style K-1, Same as above but with 1000-watt Mazda lamp.....	86.00
G- 100	Ingento Focusing Platform, Style A.....	15.00
G- 104	Ingento Enlarging Easel, Style B.....	12.00
B-1019	Ingento Projecting Lens No. 11, 8-inch focus.....	18.00
G- 182	Ingento Lantern Slide Adapter, No. 1.....	2.00

Rexo Parallax Enlarger



This is a complete enlarging box equipped with a 9-C Parallax Reflector for negatives $3\frac{1}{4} \times 5\frac{1}{2}$, 4×5 or smaller. This Enlarger is adapted for use in connection with all popular size hand cameras from Vest Pocket to post card.

The enlarging box proper is constructed of wood, well ventilated and with the inside coated with a non-oxidizing white paint, insuring the maximum light efficiency.

Enlargements of any practical size can be quickly made with this enlarger on any Enlarging or Bromide Paper. No bulb is supplied.

Cat. No. G-10 Rexo Parallax Enlarger with 9-C Parallax, cord and plug.....\$18.00

Cat. No. G-11 Rexo Enlarger only without Parallax Reflector.....\$10.50

Rexo Telegauge



This is an instrument for quickly and accurately measuring distances. Its operation is based on scientific optical laws and its readings are absolutely correct. It is constructed entirely of metal, handsomely finished and is supplied with distance gauge and pointer.

The Rexo Telegauge, which weighs only 4 ounces, and measures only $1\frac{1}{2} \times 4\frac{1}{4}$ inches. There are probably more failures among amateurs due to getting out-of-focus pictures than all other causes put together. The Rexo Telegauge solves this perplexing problem quickly and accurately. Supplied in handsome leatherette case with button clasp.

Cat. No. L-1201 Rexo Telegauge in case.....\$3.00

Ideal Telemeter

For correctly measuring the distance between the camera and the subject. Insuring the perfect adjustment of the focusing scale and thereby securing sharp pictures. Made of brass and nickel-plated.



By looking through the tube at the base of the subject, the indicator will show the proper distance at which to set the focusing scale.

Cat. No. L-1124 Price, each.....\$0.75

Watkins' Bee Meter



This Meter gives correct exposures every time, under all conditions, thus insuring the very best results. Extremely simple to use. Can be carried in the vest pocket like a watch. The most reliable exposure meter made. U. S. Dial supplied unless F Dial is especially ordered.

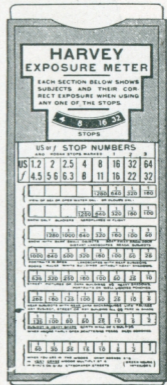
Cat. No.

Price

L-56 Bee Meter, complete...\$2.00

Harvey Exposure Meter

This is a highly corrected, accurate exposure meter giving highly accurate exposure readings for any hour of the day and for any country in the world. Simple to operate. It is made entirely of celluloid.



Cat. No. L-54 Price, each...\$2.00

Six-Fax Exposure Disc



This is the most accurate and simplest exposure calculator made, is based upon the six essentials which determine correct exposure.

- Speed of film or plate.
- Subject to be photographed
- Light.
- Speed of the lens.
- Time of the day.
- Time of the year.

The correct exposure can be read at a glance.

Cat. No. L-53 Price, each.....\$0.25

Ingento Albumettes



Bound with very high grade flexible cover stock, artistically embossed. The back is fastened together with a silken cord. Supplied in two popular colors—gray and black, and contain sixteen leaves to match.

Specify color when ordering.

Cat. No.	F-1786	5½x 7	Ingento Albumette	\$0.30
"	F-1787	5 x 8	"	"30
"	F-1789	7 x10	"	"40

Rexo Developing and Printing Outfit

Style A

3 Developing Trays	1 A B C of Photography
1 Ruby Candle Lamp	½ lb. Box Acid Hypo
1 Printing Frame and Glass.....	1 Doz. Rexo Developing Paper.....
2 Tubes MQ Developer	1 4-oz. Measuring Glass
1 Pkg. Rexo Mtg. Corners	

Style A, price complete.....\$2.50

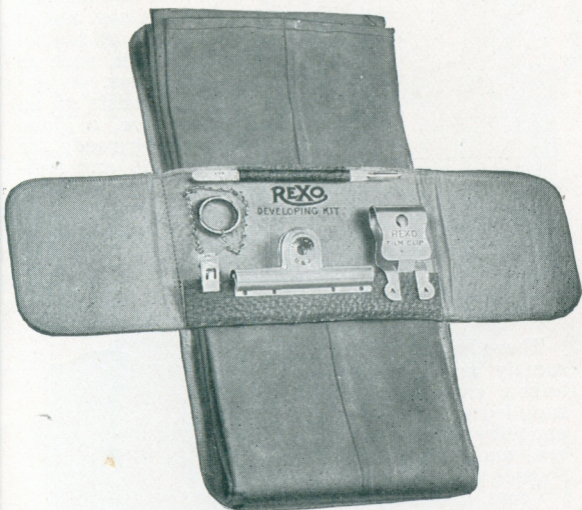
Style B

3 Developing Trays	1 Cartridge Sepaline Tablets
1 Photo Album	1 Ruby Candle Lamp
1 Printing Frame and Glass.....	1 Doz. Rexo Developing Paper.....
1 Box Rexo MQ Tubes	1 4-oz. Measuring Glass
½-lb. Rexo Acid Hypo	1 Doz. Rexo Postals
1 Pkg. Mtg. Corners	1 A B C of Photography

Style B. Price complete.....\$3.00

Rexo Daylight Film Developing Kit

(Sweetland Patent)



This remarkable invention simplifies the problem of development and affords a quick and easy method which will produce excellent results. It can be used anywhere; at home, on the camping trip, in any climate and under all conditions.

The complete Developing Kit can be carried in the pocket. It is so rapid and convenient to use that it makes film development a fascinating pleasure.

It is so certain in results that it can be trusted with the most exacting scientific or military work.

It is so simple that any boy or girl can use it successfully.

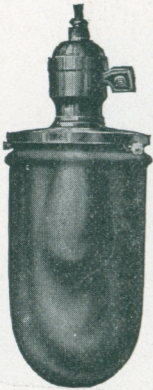
The system eliminates all the fuss and bother of film development; no air bells, no time lost and results of surprising excellence.

The complete outfit consists of a handsome plush lined leatherette case, a rubber developing tube, taking any six exposure film up to and including $3\frac{1}{4} \times 5\frac{1}{2}$, three special clips and an accurate thermometer. The case complete folded measuring but $4\frac{1}{4} \times 6\frac{1}{2} \times 1\frac{1}{4}$ inches. Weight $14\frac{1}{2}$ -oz.

Cat. No. K-220 Rexo Daylight Film Developing Kit, complete \$5.00

Rexo Ruby Lamp No. 3

(Electric No. K-703)



The No. 3 Ruby Lamp consists of an inner flashed orange bulb and an outer detachable flashed ruby globe, and is adapted for all classes of work requiring a deep non-actinic light, such as in developin plates and films.

The complete lamp consists of an inner bulb, an outer globe, a globe support and the brass ring ready for immediate attachment to any ordinary house socket.

Cat. No. K-703 Lamp No. 3
(Orange Bulb and Ruby Globe). .\$.2.50

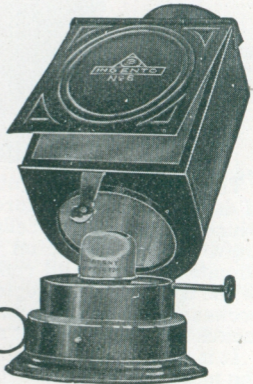
Ingento Ruby Lamp

(Oil)

These lamps are hand-
somerly finished in red
baked enamel and are
supplied with both orange
and ruby glasses. They
are made in one size
 $3\frac{5}{8} \times 4\frac{5}{8}$ inch glasses.

These lamps have se-
veral exclusive features.
The oil lamps have flick-
erless burners.

K-710 Oil Light. . . .\$.1.25



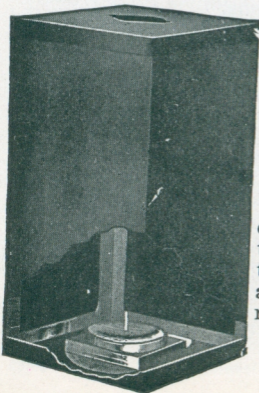
Ingento Ruby Lamp

(Candle)

A folding candle lamp with
detachable top and bottom,
the most compact lamp for
traveling. The foldingsides
are covered with non-actinic
ruby fabric, 6 inches high.

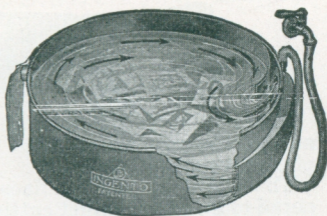
K-716 Each.\$.0.40

K-720 Candles per doz. .60



Ingento Print Washer

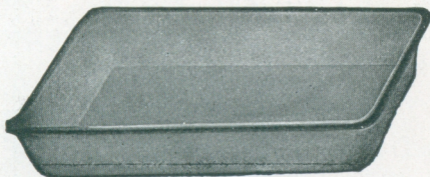
A vacuum is created which compels a perfect circulation and keeps the prints revolving, insuring quick and thorough washing.



Cat. No.	Dia.	Price
K-143	9-inches	\$2.00
K-144	12 "	2.50

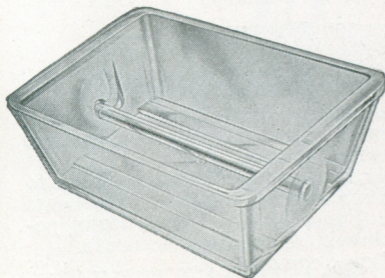
Steel Enamel and Aladdin Trays

Steel Enamel and Aladdin Trays meet every amateur requirement. Light, strong and durable.



Size	Aladdin		Steel Enamel	
	Cat. No.	Price	Cat. No.	Price
4 x 5	K-479.....	\$0.15	K-462.....	\$0.75
4 x 6	K-480.....	.20	K-453.....	.75
5 x 7		K-464.....	1.00
6½ x 8		K-465.....	1.50
8 x 10		K-466.....	1.75
11 x 14		K-468.....	3.75

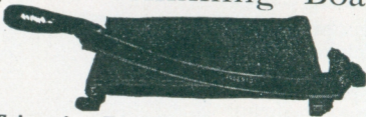
Nussbaum Film Developing Tray



For developing roll films in the strip. The rod is removable and revolves freely in the grooves. For all sizes of roll film. Made of glass. Extra deep

Cat. No.	Price
K-306 Each.	\$0.75

Ingento Trimming Boards



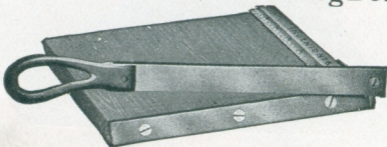
These Trimming Boards are skillfully constructed and accurately marked. The board is seasoned maple, as wide as it is long.

The blades are of the finest steel, properly tempered to insure a perfect cutting edge.

The bed is subdivided into perfect $\frac{1}{2}$ inch squares, enabling accurate trimming at any point of the board.

No.	List	No.	List
1- $6\frac{1}{2}$ in. blade....	\$2.00	4- $12\frac{1}{2}$ in. blade....	\$4.75
2- $8\frac{1}{2}$ " "	2.50	5-15 " "	11.00
3- $10\frac{1}{2}$ " "	3.00		

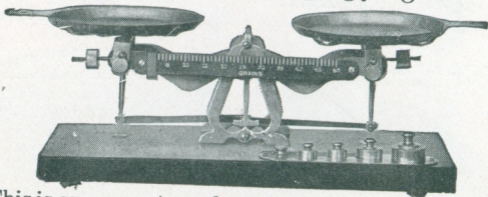
Ingento Amateur Trimming Boards



The bed is of seasoned warp-proof hardwood. The blades are of tempered steel skillfully ground.

Cat. No. L-1006 for 4x5 prints.....	\$0.65
" " L-1007 for 5x7 prints.....	.85

Rexo Scale No. 8

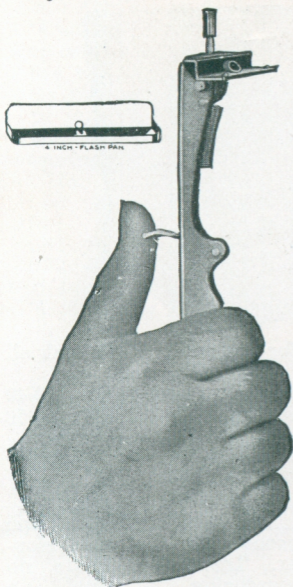


This is an accurate and perfectly constructed scale, sensitive to a grain. The interchangeable pans measure $3\frac{1}{2}$ inches in diameter.

Supplied with six brass weights from $\frac{1}{4}$ ounce to 2 ounces, including two 50-grain weights. The beam is graduated from 1 to 50-grains. Beautifully polished and nickel plated. Guaranteed accurate.

Cat. No. L-665 Price, complete..... \$4.25

Caywood Automatic Flash Lamp



The simplest and safest flash lamp made. Always ready and flashes every time the trigger is pulled by the use of the wonderful Sparking Metal. No caps, matches, or fuses are required. Small, compact and reliable.

The Hand Lamp is shown in the illustration.

Cat. No.		Price
L-202	Regular Hand Lamp.....	\$1.75
L-203	Extension Folding Hand Lamp.....	2.25
L-204	Pan-Cartridge Lamp.....	4.50
L-211	Sparking Metal, each.....	.10

Aucello Powder, Cartridges and Special Cartridges for

Caywood Lamps		Price
L-350	Aucello Powder 1-oz. bottle.....	\$0.75
L-351	“ “ 4 “ “	2.50
Aucello Cat. No.	Special Cat. No.	Price
L-355	L-360	6 Cartridges for 8ft. room. \$0.35
L-356	L-361	6 “ “ 12 “ .45
L-357	L-362	6 “ “ 18 “ .60
L-358		6 “ “ 30 “ .75

Flash Powder or Cartridges cannot be sent by Mail.

Rexo M. Q. Developers



Excellent developers for use with Rexo and all other developing papers, films and plates.

H-140 Box of 6 Metol-Quinol tubes, per box. . \$0.40

H-134 Box of 100 Metol-Quinol tubes. 6.50

Ingento Developing Tablets

The most convenient and economical form of developer. There is no waste, no measuring, no trouble, no doubt.

They are absolutely accurate and uniform. Ideal for home and traveling. Each package contains sufficient to make 54 to 72 oz. of normal developer.



Cat. No.		Price
H-145	M. Q. (Metol-Quinol) for papers, films and plates, per carton.	\$0.35
H-144	Hydrochinon, for films and plates, per carton35
H-147	Pyro, for films and plates, per carton.35
H-148	Pyro-Metol, for films and plates, per carton.35

Ideal Developing Powders

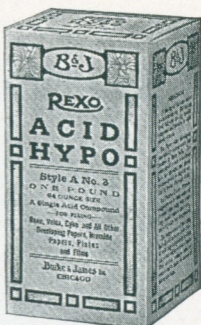
H-126	Ideal Hydro-Metol, for papers, films and plates, per box.	\$0.30
H-121	Ingento Auto Tank, for tank development, per box.30

Rexo Acid Hypo (Style A)

Rexo Acid Hypo, Style A, is a quick-acting, clean single acid fixing compound. It is adapted to use with developing papers, plates and films.

Put up in damp-tight, double paraffined container, with a measuring cup.

Cat. No.	Price
H-50 4-oz. Size.....	\$0.10
H-51 8 " "15
H-52 16 " "25
H-30 Rexo Liquid Hardener (4-oz. Size to make 64-oz. Acid Fixing Solution)..	.15



Intensine



A powerful quick-acting intensifier in crystalline or tablet form that dissolves instantly in water to make a single solution.

When applied to thin, flat printing negatives, it makes them strong and brilliant printers.

Cat. No.	Price
H-88 Tube (powder), each.....	\$0.15
H-90 Package containing 24 tablets.....	.35

Sepaline Tablets



For producing brilliant, sepia tones on Rexo, Velox and other developing and bromide papers.

Black and white prints, old or new, can be transformed into beautiful sepia pictures in from two to three minutes.

Each package will tone 250 4x5 prints.

Cat. No.	Price
H-316 Package of 24 pairs of tablets..	\$0.35
H-197 In Cartridge form, 6 Cartridges in a box.....	.35

Royal Loose-Leaf Albums

(50 Leaves)



Size	Black Silk	Black Moire	Black Linen	Price
5½x 7	F03100	F03300	F03500	\$1.00
7 x10	F03101	F03301	F03501	1.25
10 x12	F03102	F03302	F03502	1.80
11 x14	F03103	F03303	F03503	2.25

Size	Imitation Seal Grain	Imitation Walrus	Price	Genuine Walrus Gr.	Price
5½x 7	F04100	F04300	\$1.10	F0530	\$1.90
7 x10	F04101	F04301	1.50	F0531	2.50
10 x12	F04102	F04302	2.40	F0532	4.25
11 x14	F04103	F04303	2.75	F0533	5.00

Size	Genuine Seal Gr.	Genuine Eng. Long	Price	Genuine Mis'n Brown	Price
5½x 7	F05100	F05600	\$2.00	F06500	\$2.00
7 x10	F05101	F05601	2.75	F06501	3.00
10 x12	F05102	F05602	4.50	F06502	4.50
11 x14	F05103	F05603	5.40	F06503	5.50

SPECIAL PATTERNS—Genuine Leather, Loose Leaf

Cat. No.	Size	Design	Price
FA5701	7x10	Black Morocco.....	2.75
FA6201	7x10	Brown Terrapin.....	3.00
FA6301	7x10	Gray Terrapin..	3.00
F07801	7x10	Marble Pattern.....	3.00
F08701	7x10	Alligator Grain	3.00
FA8801	7x10	“ Gray.....	3.00

IMITATION LEATHER

FA2501	7x10	Brown Alligator....	1.50
FA2701	7x10	Green Elephant.....	1.50
FA4501	7x10	Spanish Green.....	1.75

Roehrig's Transparent Oil Photo Colors

These Colors are brilliant and permanent. Easily handled by amateurs.

Fifteen Colors—Flesh, Cheek, Lip, Carmine, Blue, Cadmium Yellow, Cadmium Orange, Tree Green, Viridian, Cobalt Violet, Raw Sienna, Sepia, Verona Brown and Neutral Tint.

Cat. No.		Price
H-186	STANDARD SET, Fifteen tubes, ½x2-inch.....	\$2.50
H-187	PROFESSIONAL SET, Fourteen tubes, ¾x4-inch..	7.50
	(Neutral Tint omitted in this Set)	
H-188	ROEHRIG'S MEDIUM, (Quadruple tube).....	.50
H-189	" DULL FINISHING VARNISH (2-oz.bt)	.50
H-190	" POROUS PAPER SIZE (Quadruple tube)	.30

Photographic Books

ABC of Photography

It is written in simple language, plain and practical, covering all branches of amateur photography from A to Z. 85 pages. Paper cover.

Cat. No. F-3150, Price.....\$0.25

Watkins' Manual

This book teaches scientific exposure and development. It also deals with all branches of photography. 136 pages. Flexible cloth cover.

Cat. No. F-3195, Price.....\$0.75

Printing Frames

Size	Cat. No.	Amateur Piano Hinge	Size	Cat. No.	Amateur Piano Hinge
3¼x4¼	K-627	\$0.35	4x5	K-630	\$0.35
3¼x5½	K-628	.35	5x7	K-632	.45
3⅝x6	K-629	.40			

Ingento Photographic Sundries

Cat. No.		Price
L- 520	Print Rollers, 4-inch 25¢; Cat. No. L-521, 6-inch....	\$0.35
H- 200	Water Colors, Box of ten colors, with brush.....	.30
H- 152	Acme Amateur Water Colors, per set.....	1.00
L-1114	Retouching Outfit, complete.....	1.00
H- 214	Spotting Colors, set of four colors.....	.35
F 3389	Blotter Book, 12 sheets, 7¾x9¼ (with waxed inserts)	.30
H- 220	Opaque, Collapsible Tubes.....	.15
K- 368	Mortar Graduate and Pestle (4-oz.).....	.75
K- 314	8-oz. Glass Tumbler Graduate, each.....	.20
K- 362	Tablet Crusher and Stirring Rod (glass).....	.10
L- 954	Ideal Thermometer, each.....	.30
L- 958	Stirring Rod Thermometer, each.....	.75

Rexo Mounting Corners (Four-In-One)



Rexo Mounting Corners are very artistic and are easily and quickly applied. Prints can be mounted permanently or slip-in style.

Rexo Corners are unequalled for mounting prints, greeting and souvenir cards, or for preserving them in albums as cards are not damaged and can be readily removed when desired. Also for scrap books, wall decoration and many other uses in the home, school and office.

Rexo Corners allow the prints to be mounted close together.

Cat. No.	Style and Color	Price per Pkg. 100 Corners
F-500	Fancy Black.....	\$0.10
F-501	Fancy Gray.....	.10
F-502	Fancy Sepia.....	.10

Cat. No.	Style and Color	Price per Pkg. 100 Corners
F-503	Fancy Blue.....	\$0.10
F-504	Fancy Buff.....	.10
F-505	Plain Black.....	.10

Engel's Art Corners

A very artistic way mounting corner.

Supplied in four styles—round, square fancy and oval, colors: black, white, sepia, light and dark gray. 100 Art Corners to a package; gold and silver, 50 Art Corners to a package. Always state colors desired.

Cat. No.	Price
F-3321 Round..	\$0.10
F-3322 Square..	.10
F-3323 Fancy..	.10
F-3324 Oval....	.10



Remember—

“Every
Click
a
Picture”

The REXO way

REXO

Photo Products

For Sale by