

Pathes

MOTION PICTURE
Camera and Projector



THE
Pathex
Motion Picture
Camera and Projector

PATHEX, Inc., is a subsidiary of Pathe Exchange, Inc., distributors of Pathecomedies, Patheserials, and Pathepictures; and producers of the world-famous Pathe News and Pathe Review.

The Pathex Camera and Projector are the result of years of experiment in the famous laboratories of Pathe Cinema, Vincennes, France, for more than twenty-five years one of the best known manufacturers of high class motion-picture cameras, apparatus and films in the world.

PATHEX, INC.
(A Subsidiary of Pathe Exchange, Inc.)
35 W. 45th Street,
New York

Just Think!

- ❑ Think of seeing the children five or ten years from now, just as they are today.
- ❑ Think how you could improve your golf game by watching motion pictures of your own play. Anyone can take them easily, with Pathex.
- ❑ Think how you would enjoy a record of your week-ends in living, moving pictures.
- ❑ You can bring the world to your own sitting room, too, with a Pathex Projector and a Pathex library.
- ❑ Your children can actually see plants grow, lions play, deep sea fishes in their haunts—and learn many things—enjoyably—with Pathex.
- ❑ Think how much better you could play tennis if you studied the plays of the world's experts—in motion pictures.
- ❑ You can see the skill of the champion boxers analyzed in living, motion pictures.
- ❑ You can actually see the streets, and shops and dodge the traffic in scores of the big cities of the world in Pathex Pictures.

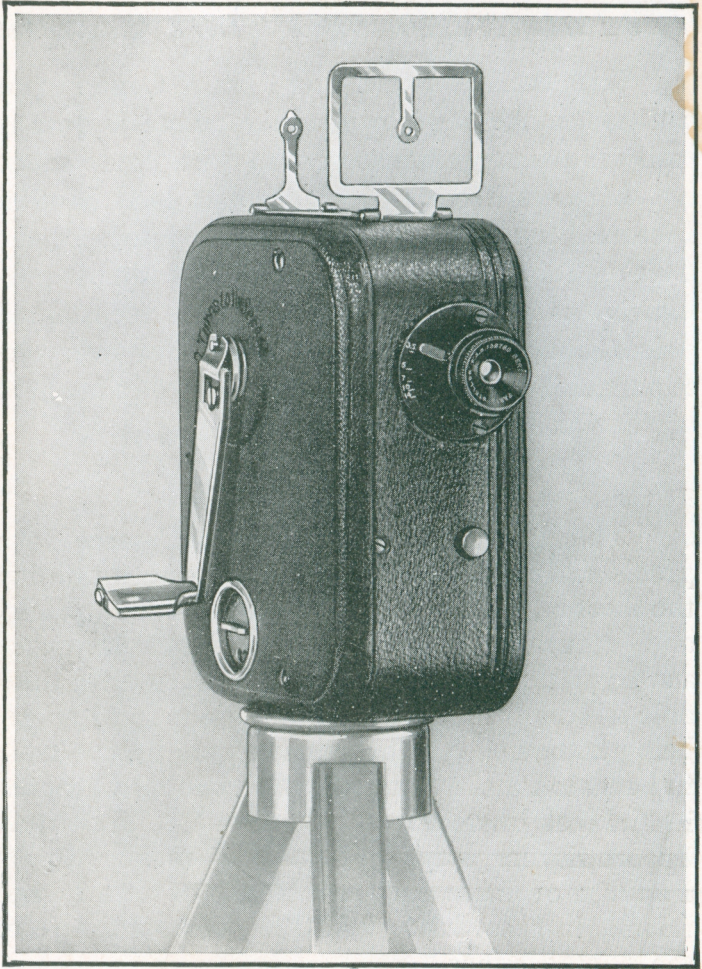
The Pathex Motion Picture Camera

With the Pathex Motion Picture Camera you can now make your own motion pictures just as easily and at no greater cost than taking snap shots.

Minutes heretofore required to load Motion Picture Cameras have been reduced to seconds. Cost of Camera and Film, heretofore almost prohibitive, is now only a fraction of the accustomed prices, and the way is at last open for everyone to participate in the fascinating and profitable field of Motion Picture photography.

Lens Equipment

The Pathex Motion Picture Camera is a precision apparatus of the highest class, combining the most advanced ideas of mechanical simplicity and accuracy. The extra luminous imported anastigmatic combination lens F3.5, with adjustable iris diaphragm, is fixed focus, the focal length being 20 m/m. All the subjects are in focus from five feet to infinity, and like professional Cameras, its field of photography is unlimited, presenting the opportunity for everyone to make Motion Pictures of those intimate scenes of family and friends in accordance with the personal desire of the photographer.



Size and Convenience

On the opposite page the Pathex Camera is illustrated in $\frac{2}{3}$ its full size. It weighs only $\frac{1}{4}$ lbs., and may readily be carried in the coat pocket or in its leather case slung over the shoulder, as one would carry a pair of binoculars, thus completely overcoming the inconvenience of carrying a Camera that is either too heavy or too bulky.

Easy to Operate

A few minutes instruction in the "shooting" of motion pictures with the Pathex Camera will convey a complete understanding of every step in its successful operation and actual experience with the Pathex Camera will bring quick recognition of its extreme simplicity and the facility of its operation.

Briefly the entire operation can be summed up in these few words: Insert the daylight loading magazine in the Chamber, fit camera to the tripod, point the lens at the centre of the scene or subject and turn the operating crank. Even as a beginner anyone can load the Camera in 5 to 10 seconds, set up the tripod in one minute and be ready to "shoot" motion pictures all inside of two minutes.

The ease with which every step in the "shooting" and projecting of the pictures is performed eliminates all the big and little troubles long asso-

ciated with the preparation and the taking and projecting of motion pictures. Everything that will simplify the actual photographing has been provided and it is all so compact and so simple as to quickly dissipate any obstacles thought incidental to Motion Picture Photography.



*Pathex Daylight Loading
of Magazine Film*

Pathex Motion Picture Film

All Pathex Motion Picture Film is non-inflammable and is supplied ready for instant use in the Pathex Daylight Loading Magazine.

Each magazine is loaded with 26 to 30 feet Pathex Motion Picture Film which is the equivalent of about 75 feet of Standard Motion Picture Film. As there are 40 frames to each foot of Pathex Film it will be observed that each Pathex magazine has a picture capacity of about 1100 frames.

The Pathex Magazine of Film, the Ideal Length For Amateur Photography

Ten feet and thirty feet are practically the minimum and maximum length of film required

to photograph a single scene or subject, and in most instances the photographer will be intent on taking a full length scene or two or three short scenes. In so doing all the film in the magazine will have been exposed and it is ready to be sent away to be developed. A longer film is generally an invitation to waste the remaining film on haphazard shots or to hold over until some other time when light conditions are so different that perfect development of the entire film is impracticable. Therefore, the magazine load of 26 to 30 feet will best meet all amateur requirements which will be fully realized as use of the camera lengthens.

To Have Film Developed

When all the film has been exposed, remove magazine from Camera, place it in the mailing box in which it was received and mail to Pathex, Inc. Without additional charge, the Pathex Laboratories will develop the film by the reversion process which converts it into a positive, wind it on a projection reel, and return within three days after it is received. This service is included in the original charge for the magazine and will be continued until June 1st, 1926, or until such time as laboratories for the handling of Pathex films have been established at various points throughout the United States, when it is hoped a revision downward may be possible.

The Pathex Motion Picture Projector

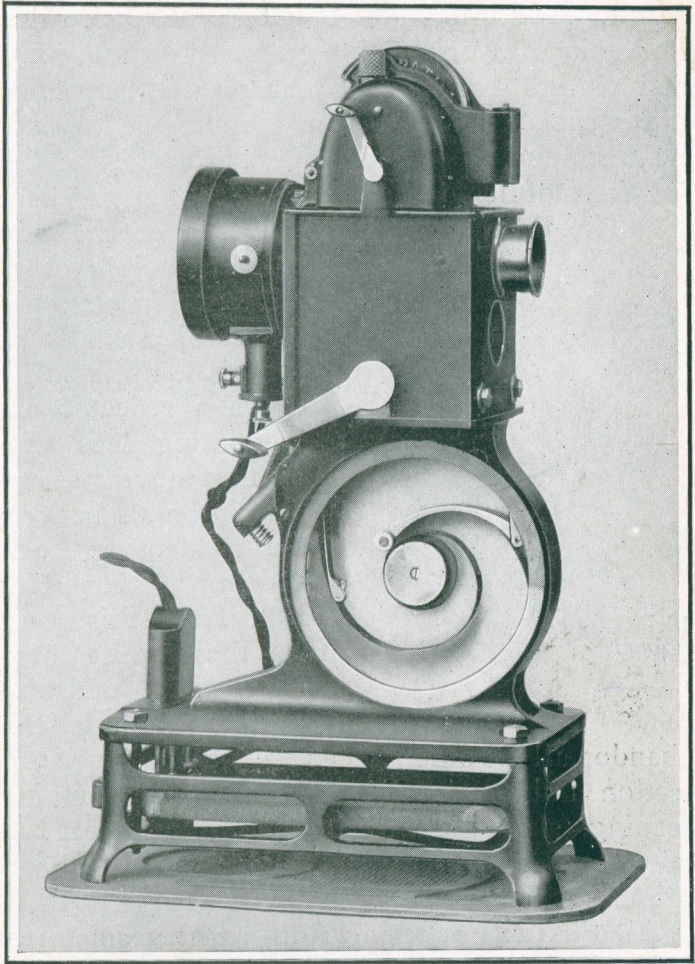
The Pathex Motion Picture Projector operates on the home electric current by simply plugging into the lamp socket. Completely assembled it is only 4½ in. x 7 in. x 12½ in. and weighs only 5 lbs. 5 oz.

Illumination is supplied by the specially designed 12 Volt .5 Amp. Mazda Lamp with highly concentrated light rays affording maximum illumination and minimum of heat. This lamp, in conjunction with Pathex non-inflammable film, eliminates every element of risk and even after an entire evening's program the lamp house or any part thereof may be handled with bare hands with absolutely no discomfort.

*Motion Pictures in the Home are now
an assured fact*

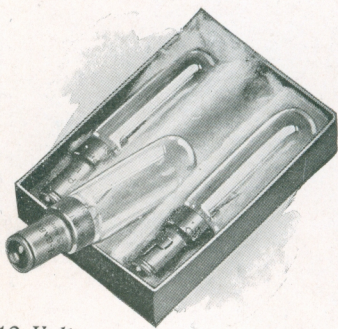


To see flashed upon the screen in the intimacy of the family circle, pictures of loved ones and friends, is probably the most interesting and absorbing entertainment one could provide and when considering the unlimited field of motion picture photography, imagination might easily run riot in contemplation of the diversity of pro-



grams. Add to this the Catalog of Pathex Films embracing features and comedies by leading motion picture stars, travel pictures of many lands and scenes, art and industry, sports and games, etc., etc., and the broad scope and variety of this new form of home entertainment is plainly evident.

The Pathex Projector operates on the same



12 Volt
.5 Amp.
Mazda
Lamps

basic principle as do all other motion picture projectors, as regards a lamp fixed between a reflector and condensing lens with the film moving at regular intervals between the condensing lens and projecting lens. But, from this point on, the Pathex introduces new and improved principles that

abandon all the old methods of motion picture projection and so simplify the threading, running, feeding, take-up and rewinding of film that it is as easy to operate as playing and changing phonograph records.

All Pathex Projecting Films, whether amateur or professional, are anchored to the revolving hub

of an encased reel. The reel is simply placed on the projection axle and the beginning of the film placed in the large opening to the take up chamber where it is automatically coiled on the take up hub as rapidly as fed by the operating claw. When film is all run out its end remains engaged on the reel axle and a few reverse revolutions of the highly geared rewind device puts the film back in the reel for future use. These operations are all more or less automatic, positive in their performance and reduce motion picture projection to its very easiest and simplest form.

Recognizing that simplicity in preparation and operation is the important essential to all home entertainment we invite the closest inspection of the Pathex Projector where it will be readily observed that all involved or complicated methods have been entirely eliminated.

Pathex, Inc.

A Subsidiary of Pathe Exchange, Inc.

35 West 45th Street

New York City

Price List on Pathex Camera and Projector Accessories

Pathex Motion Picture Cameras —with Leather Carrying Case; Tripod and Tripod Carrying Case----	\$47.50
Tax on Camera -----	2.30
Genuine Leather Carrying Case with Strap for Camera	3.00
Portrait Attachment -----	.60
Yellow Light Filter -----	.60
Pathexgraph (for photographing titles)-----	3.50
Tripod -----	3.00
Leather Bound Canvas Case for Tripod-----	1.50
Pathex Raw Film (30 ft. Magazines)-----	1.75
Pathex Motion Picture Projectors —with Rubber Mat; 8 ft. Elec. Cord with Connections; Film Splicer; Film Cement; 3 Lamps; Film Patches; Pathex Oil and Cleaning Outfit-----	50.00
Screen—Frame and Stand 9½ in. x 12 in.-----	2.00
Silver Screen, 30 in. x 40 in. -----	7.50
“Hermagis” Special Lens -----	4.00
Pathex Lamps (Packed 3 to a Box) ----- .50 Each	1.50
Film Splicer (for joining film) -----	2.00
Film Patches (for mending perforations) ---Per Box	.15
Film Notcher and Slotter -----	2.00
Pathexcolor Disc (for tinting projection) -----	1.00
Special Pathex Oil -----Per Bot.	.10
Pathex Film Cement -----Per Bot.	.10
Special Plug and Cord -----	1.25
Reels of Positive Films (30 ft. lengths) -----	1.00
Reels of Positive Films (60 ft. lengths) -----	1.75
Rubber Mat for Projector -----	.75