



Century Cameras

C E N T U R Y
C A M E R A S



Century Camera Company

Rochester New York

1907



CIRKUT PHOTOGRAPHY



T

THE STORY OF THE CENTURY The story of the Century relates largely to an aim and its accomplishment—that aim the doing of a thing—camera making—as well as it could possibly be done ; its accomplishment—the recognized standing of the Century tells for itself.

If there wasn't a rapidly-growing number of those who are interested in photography for the sake of getting the most out of it, there would really be no Century Camera ; it is to those to whom the Century appeals—for them it is made. The increasing number of satisfied Century users, testifies to a purpose performed—an aim accomplished. With the Century, too, there is no standing still ; last year they were better than ever before, and this year they are better than last. And that is the accomplishment of another aim—the aim to progress.

WHEREIN CENTURY CAMERAS DIFFER Century Cameras embody more improvements and meritorious features than any other plate cameras of either domestic or foreign manufacture. There are no exceptions. They possess that exclusiveness and individuality which go to make the difference between Century Cameras and others. A camera with the name plate "Century" means always an instrument made on honor.

DETAIL OF CONSTRUCTION Centurys are constructed of the best kiln-dried mahogany and prepared long before it is actually required for use, to guard against any possibility of warping. In selecting the stock, that which has the richest grain effect is secured, and it is finished so as to preserve both the beautiful grain and also the natural color of the wood. All corners are gracefully rounded and every Century Camera, from the lowest priced to the most expensive, is not merely nailed together and then covered with leather—it is dovetailed. To dovetail is a more expensive way to manufacture—but to maintain Century Quality nothing is unimportant.

BUILDING A CENTURY CAMERA The employment of skilled mechanics in every department—men trained by years of experience in camera making—the use of only such raw materials as are first-class in every respect—with facilities so superior, and the

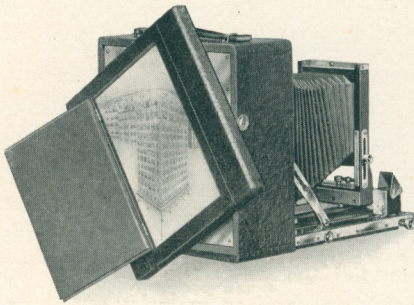
system of manufacture so thorough, we are enabled to attain in our finished product the nearest possible approach to absolute perfection.

Century Cameras embody the good points which over a decade of camera building have developed and suggested. There are also new features and exclusive ideas covered by letters patent, all of which make the entire Century line thoroughly distinctive.

CENTURY

REVOLVING BACK

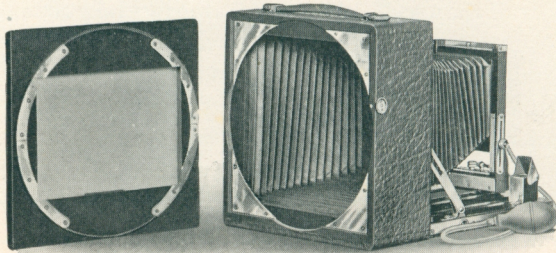
The Revolving Back enables the photographer to decide instantly, just how he wishes to make the picture, as the reflected image can be viewed with the ground glass focusing screen in either a vertical or horizontal position.



Showing Revolving Back turned half-way to Vertical Position

Photographic plates are usually longer one way than the other, and it has been the general custom to build cameras so that the long side of the plate will be horizontal with the view. When photographing high buildings, or when making portraits, or in fact any perpendicular subject, the length of the picture should be up and down, the short side acting as a base.

To make an upright picture with an ordinary camera, by which we mean one without reversible back, the *entire instrument* must be turned over on its side, and in this position the various adjustments



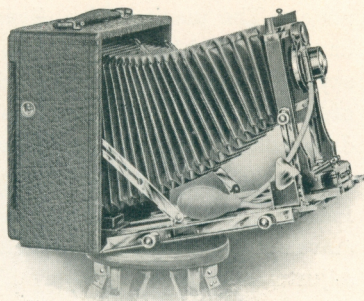
Revolving Back detached from Camera, showing Construction

are not as readily manipulated. Even with the improved form of hand camera, made with a reversing back, it is necessary, when changing the plate from a horizontal to a vertical position, to *detach the entire back*, either by releasing springs or pressing buttons, then turn the back over and again adjust it to the camera in the reverse position.

THE SWING BACK—THE
CENTURY METHOD AND
ITS ADVANTAGES

The purpose of a Swing Back or Swing Bed is to keep the plate perpendicular, or parallel with the object photographed. To include the top of a tall building or church spire, or to secure more of a subject than can be obtained with the camera when level, it is often necessary to tilt it. Under such conditions, with a camera not having a Swing Back or Swing Bed, the lines in the photograph will converge at the top, because the plate is at an angle with the subject instead of parallel to it. If the back of the camera is made to "swing" independently, then even though the camera is not level, the plate can be placed parallel with the subject, and straight lines secured.

To manipulate an ordinary Swing Back, it is necessary to adjust the tripod legs, in order to keep the plate perpendicular. But this is not always convenient—in fact, impossible under certain conditions. We have perfected an adjustment which avoids the necessity of any change in the position of the tripod, and this feature is the Century Swing Bed.



Century Grand, showing Swing Bed

It is easier to manipulate than the old style Swing Back, and when the tripod top has been leveled and the camera attached, the plate always remains perpendicular, whether the Swing Bed is used or not.

All Century swings having rack and pinion movement are fitted with our patent Swing Back Lock, which holds the back absolutely rigid in any desired position by simply pushing the milled head in flush with the bed—another exclusive Century idea.

As a rule, landscape pictures are made with a small diaphragm, or stop, in the lens for the purpose of bringing into sharp focus both

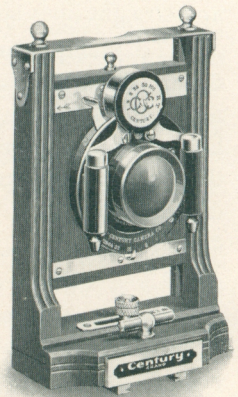
objects in the foreground as well as distant points. Under certain conditions the use of a small diaphragm would require an exposure too long to prevent movement of the objects—swaying trees, etc. As there are usually no straight lines in a landscape, by tilting the Swing Back, both near and distant objects can be brought into focus while using a large stop.

A Swing Bed is not necessary for hand work pure and simple, but this feature as applied to Century Cameras does not increase either the weight or bulk. It is an adjustment that will be found very convenient when making tripod exposures, and under certain conditions it is practically indispensable.

THE RISING AND FALLING FRONT AND THE CENTURY IDEA OF IT The lens when occupying its normal position on a camera is exactly in the center of the plate. The purpose of a Rising and Falling Front is to shift the lens above or below the center, and thus vary the relative amount of sky and foreground, on which depends very largely the artistic effect of the picture. Moving the lens upward will give more sky, and when dropped below the center the amount of foreground is increased.

All Century Cameras have Rising and Falling Front, and the maximum amount of movement is given. In Models 40 to 43, the adjustment is controlled by a milled head. The Century Models 46, 47, Grand and Grand Senior Cameras have, however, a new 1907 Century feature—whereby the front is raised and lowered by a small knob on the top of the left standard. Only one movement is necessary to raise or lower and secure the lens in any desired position without the usual binding screw.

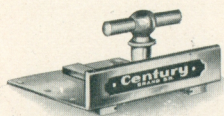
All Century Grand and Grand Senior Cameras, also Models 46 and 47 and Petite No. 3, have the front arranged to move horizontally as well as vertically. This is called a Double Sliding Front. The horizontal movement permits adjusting the lens from side to side, thus changing the angle of view, or, if the camera is not made with a reversing back, this movement takes the place of regular Rising and Falling Front when the instrument is reversed for vertical pictures.



Double Sliding Front
with Adjustment for Rais-
ing and Lowering

THE FRONT
AUTOMATIC CLAMP

In place of the old style clamp hook for holding the front in position, after focusing, all Century Cameras are fitted with our patent Automatic Clamp—a novel device that automatically clamps and securely holds at any point on the bed the front with lens and shutter. There is absolutely no chance of the front slipping after once adjusting the focus, as the “shoe” grips the brass bed plate its entire length.



No danger of the Front slipping
with a Century Automatic
Clamp

When the T-shaped bar at the base of front is straight across the bed, or parallel with the name plate, the Clamp is set, and the front cannot move. To release the Clamp it is only necessary to turn the bar a trifle either to the right or left, when the front with lens can readily be moved forward or back. The instant you release the bar it clamps the front automatically, and clamps it securely—no slipping or sliding to throw the picture out of focus. This Clamp is the most effective device ever invented for the purpose. It is another of our exclusive and very practical features—another evidence of Century Quality.

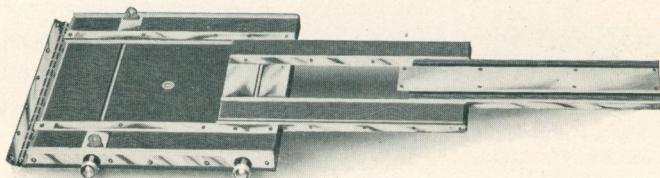
THE CENTURY
FOCUSING SCREEN

The method of fitting the ground glass Focusing Screen in Century Cameras is entirely different as it provides for a variation in the thickness of the ground glass. If the original screen is ever broken, it can be replaced without a single tool in ten seconds, actual time, and no matter how thin or thick the glass, it will automatically register and occupy the same plane as the sensitive plate. No other plate or film camera has this feature. It is exclusively Century and merely another evidence of Century Quality.

THE TRIPLE SECTION BED—
OPERATED BY A SINGLE PIN-
ION—THE CENTURY WAY

Rigidity!—that’s one of the many important points we have accomplished in the construction of our extension beds. The Century Triple Extension Beds are marvels of mechanical ingenuity. A single pinion at the side moves each section of the bed forward or back and when pushed in, acts as a lock, holding the bed absolutely firm and rigid whether it is fully or only partly racked out. By turning the milled head the section carrying lens and shutter moves first, and when this section is fully extended it locks automatically into the second section, and at the same time begins to carry it forward by means of a continuous rack. Our

method of fitting the front section of the bed is entirely new and an original Century idea. It gives an exceptionally easy and smooth movement, as the same amount of friction exists whether the front section is fully or only partly extended. Special construction of the wood and metal parts, makes the bed capable of resisting atmospheric



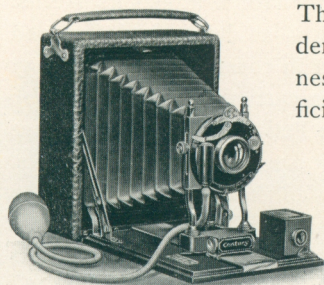
Century Triple Extension Bed

changes to a remarkable degree. Each section is bound with metal to prevent any possibility of lost motion, and brass guides on the top of the bed insure strength and perfect rigidity.

CENTURY Finders are of a special design, far superior to FINDERS the ordinary type, as three lenses are employed. In place of simply one lens at the top we use two, and by this combination secure an image which is most brilliant and perfect. For the purpose of cleaning the lenses and mirror, the Century Finder can readily be removed from the brass binding and as easily put back into place—a feature not possible with any other Finder on the market. Century Quality again.



Petite Century No. 1



The Petite series was designed to meet the demand for extreme compactness and lightness and this has been done without sacrificing efficiency.

Those who prefer the non-reversible back type of camera will find the Petite Centurys wonderful little instruments in every respect—perfect in all adjustments and so easy to operate that even a novice can readily make good pictures.

The No. 1 Petite is an exceedingly compact Camera. The red bellows, black leather covering, dark shutter and nickel trimmings, give the camera a most attractive appearance, to say nothing of its value as a picture taker.

The front adjusts for regulating sky and foreground and a brilliant finder is attached to the bed. An automatic clamp holds the front in any position—no set screws necessary.

The Lens is a Century Rapid Rectilinear, of just the right focus to give the most pleasing perspective. It has a flat field, fine depth of focus and good covering power, and is fitted with the No. 3 Automatic Shutter. A valuable feature of this shutter is a separate lever for throwing back the shutter leaves when focusing. The shutter is described on page 41. A ground glass screen at the back allows the full-size image to be seen for focusing when desired.

All Petite Century Cameras are fitted with Double Plate Holders, which are a decided advantage over the single holder usually supplied with cameras of this type of construction.

SPECIFICATIONS

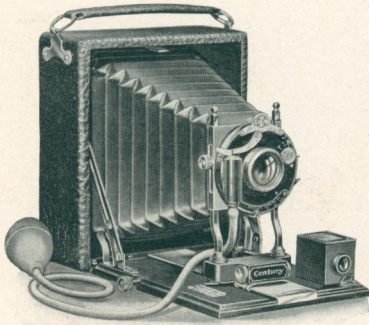
	3¼ x 4¼	4 x 5
Dimensions	5¼ x 1⅞ x 4⅜	6 x 2⅞ x 5⅞
Length of Bellows	5½"	6½"
Weight	18 oz.	23 oz.

PRICE

	3¼ x 4¼	4 x 5
Petite Century No. 1, with one Double Plate Holder	\$ 10.50	\$ 13.00
Extra Double Plate Holders, each	1.00	1.00

Petite Century No. 2

The popularity of the Petite Century No. 2 attests its merits. It is a compact camera of standard quality—so dainty in design and so perfect in construction that it may readily be carried in the pocket.



The Petite Century No. 2 has all the good points found in Petite No. 1, and in addition a rack and pinion for focusing. Cartridge-roll film as well as the Film Pack and glass plates may be used with Petite No. 2—a feature not possessed by any other camera of a similar type on the market, excepting our No. 3 Petite. The film holder fits so neatly that it is practically a part

of the camera and perfectly interchangeable with the plate holder.

The front with automatic clamp is adjustable for sky and foreground. A brilliant finder for locating the image is attached to the bed. The Lens is a Century Rapid Rectilinear, having fine depth of focus, good definition, a flat field and possesses ample speed for instantaneous exposures. The No. 3 Automatic Shutter operates for time, instantaneous and bulb exposures. The shutter also has a lever for throwing back the shutter leaves when focusing. It is described in detail on page 41. A ground glass screen at the back permits the full-size image to be seen when focusing.

The Petite Century No. 2 is made throughout of fine mahogany, handsomely polished, the body being covered with genuine cowhide leather.

SPECIFICATIONS

	$3\frac{1}{4} \times 4\frac{1}{4}$	4×5
Dimensions	$5\frac{1}{4} \times 1\frac{1}{8} \times 4\frac{3}{8}$	$6 \times 2\frac{7}{8} \times 5\frac{1}{8}$
Length of Bellows	7"	8"
Weight	19 oz.	24 oz.

PRICE

	$3\frac{1}{4} \times 4\frac{1}{4}$	4×5
Petite Century No. 2, with one Double Plate Holder	\$ 12.50	\$ 15.00
Extra Double Plate Holders, each	1.00	1.00



Petite Century No. 3

The Petite Century No. 3 is not simply a "snap shot" camera, limited in its field of work. Its scope is a wide one. For instantaneous and time exposures, for landscapes and interiors, for portraits and groups, for flashlight pictures—for all these and more too, it is admirably adapted.

Real pictures are not the result of simply making snap shots at random. Many times it is desirable to see the full-size image reflected on the ground glass, to compose and arrange the picture. This is possible with the Petite Century No. 3, whether using plates or film, and it is a great advantage.

The No. 3 Petite has the automatic front clamp, rack and pinion for delicate focusing, brilliant finder—in fact every adjustment and advantage possessed by the preceding models, and in addition:

- A Rapid Symmetrical Lens.
- A No. 1 Automatic Shutter (for description see page 41).
- A Double Sliding Front.
- A Swing Bed and Swing Back.
- A Bellows of sufficient length to use the back combination of Symmetrical Lens alone.

Never before has so compact a camera been made, embodying the features enumerated above, and at the same time perfectly adapted for glass plates, the Film Pack and Cartridge Roll Holder.

The Petite No. 3 will at once appeal to all who desire for general work a camera in the most compact form possible.

SPECIFICATIONS

	$3\frac{1}{4} \times 4\frac{1}{4}$	4×5
Dimensions	$5\frac{1}{4} \times 2\frac{7}{16} \times 4\frac{3}{8}$	$6 \times 2\frac{3}{8} \times 5\frac{1}{8}$
Length of Bellows	9"	10 $\frac{1}{2}$ "
Weight	22 $\frac{1}{2}$ oz.	29 oz.

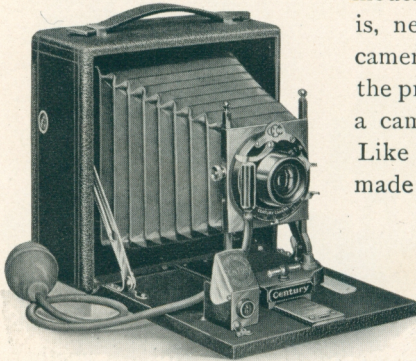
PRICE

	$3\frac{1}{4} \times 4\frac{1}{4}$	4×5
Petite Century No. 3, with one Double Plate Holder	\$ 20.00	\$ 23.00
Extra Double Plate Holders, each	1.00	1.00

Century Camera, Model 40

WITH REVOLVING BACK

In presenting the line of Century Cameras, due consideration has always been given the amateur who wishes to invest only a moderate amount in an equipment, but is, nevertheless, anxious to possess a camera that can be depended on for the production of good pictures. Such a camera is Century Model 40.



Like the more expensive models, it is made throughout of mahogany, with every corner dovetailed, and possesses adjustments which render it available for both hand and tripod work.

The lens is the Century Rapid Rectilinear, a most excellent type, possessing plenty of speed, good covering power, and well adapted for general amateur work. It is fitted with No. 3 Automatic Shutter, operating for instantaneous, time and bulb exposures. A lever at the side, when adjusted, throws back the leaves for focusing—a new and exclusive Century feature.

The lens and shutter are fully described on pages 37 and 41.

For the amateur who is just starting his photographic career, we can heartily recommend Model 40 as a camera that will fulfill every requirement. Glass plates, Film Pack and Cartridge Roll Holder may all be used.

SPECIFICATIONS

		3¼ x 4¼	4 x 5
Dimensions		5⅝ x 2¾ x 5½	6⅜ x 3 x 6¼
Length of Bellows		7"	8"
Weight		26 oz.	33 oz.

PRICE

Including one Double Plate Holder and Carrying Case.

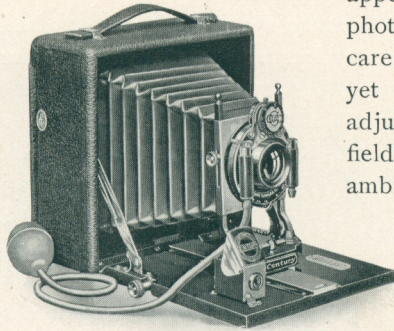
		3¼ x 4¼	4 x 5
Century Camera, Model 40		\$ 13.00*	\$ 15.00
Extra Double Plate Holders, each		1.00	1.00

*Not furnished with Revolving Back, but has Reversible Back.

Century Camera, Model 41

WITH REVOLVING BACK

One of the most popular of moderate-priced cameras, and deservedly so, is the Century Model 41. It is a style that strongly appeals to a large number of amateur photographers—those who do not care for the more elaborate cameras, yet desire an outfit possessing such adjustments as will permit the varied field of work usually attempted by ambitious amateurs. The general design of Century Model 41 is similar to Model 40, but it has in addition a fine rack and pinion for accurate focusing, and a somewhat



better type of shutter—the No. 4 Double Valve being substituted for the No. 3. The shutter has triplicate movement, and is also fitted with a lever for throwing back the leaves when focusing—a new and exclusive Century feature. The Lens is the Century Rapid Rectilinear. Both lens and shutter are described on pages 37 and 41.

The back revolves for upright pictures (see page 4), the front adjusts for regulating sky and foreground and an excellent finder with hood is attached to the bed. An automatic clamp holds the front with lens at any desired point on the bed, an easier and more satisfactory method of adjustment than the old style clamp hook. The 5 x 7 is made with mahogany front in place of brass.

SPECIFICATIONS

	3¼ x 4¼	4 x 5	5 x 7
Dimensions	5⅝ x 2¾ x 5½	6⅝ x 3 x 6¼	8⅝ x 3¾ x 8½
Length of Bellows	8"	9½"	13"
Weight	30 oz.	38 oz.	4½ lbs.

PRICE

Including one Double Plate Holder and Sole Leather Carrying Case.

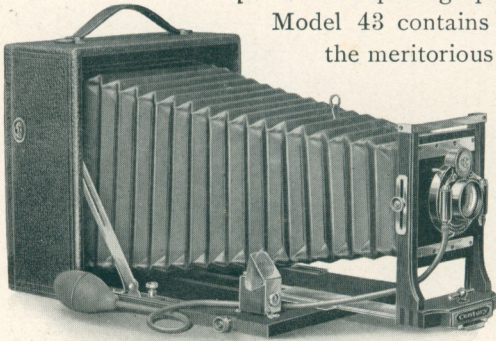
	3¼ x 4¼	4 x 5	5 x 7
Century Camera, Model 41	\$ 17.00*	\$ 19.00	\$ 25.00
Extra Double Plate Holders, each	1.00	1.00	1.25

*Not furnished with Revolving Back, but has Reversible Back.

Century Camera, Model 43

WITH REVOLVING BACK

The wide field of work which can be done with Century Model 43 makes it a particularly attractive style for advanced amateur and professional photographers.



Model 43 contains every adjustment and all the meritorious features possessed by the

less expensive types, including revolving back (see page 4), rising and falling front, automatic bed clamp, rack and pinion, etc. In addition, the camera is fitted with a swing back and swing bed,

and a Century Rapid Symmetrical Lens. An extra long bellows of sufficient length is provided so that the rear combination of the lens can be used alone, for the purpose of making distant objects appear larger in the picture—a feature every experienced amateur will appreciate. The swing back is a useful adjustment and a decided advantage when photographing buildings, church spires and similar subjects.

The Shutter is our highest type—the No. 1 Century Automatic, operating for instantaneous, time and bulb exposures, with either finger or pneumatic release. Both lens and shutter are fully described on pages 37 and 41.

We recommend Model 43 as a particularly desirable Camera at moderate cost, and an instrument capable of producing most excellent results.

SPECIFICATIONS

	$3\frac{1}{2} \times 4\frac{1}{2}$	4×5	5×7
Dimensions	$5\frac{5}{8} \times 2\frac{3}{4} \times 5\frac{1}{2}$	$6\frac{3}{8} \times 3\frac{1}{4} \times 6\frac{1}{4}$	$8\frac{3}{8} \times 3\frac{3}{4} \times 8\frac{1}{2}$
Length of Bellows	10"	12"	16 $\frac{1}{2}$ "
Weight	31 oz.	40 oz.	4 $\frac{3}{8}$ lbs.

PRICE

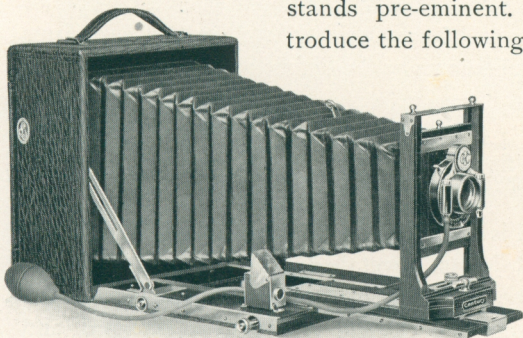
Including one Double Plate Holder and Sole Leather Carrying Case.			
	$3\frac{1}{2} \times 4\frac{1}{2}$	4×5	5×7
Century Camera, Model 43	\$ 22.00 *	\$ 25.00	\$ 33.00
Extra Double Plate Holders, each	1.00	1.00	1.25

*Not furnished with Revolving Back, but has Reversible Back.

Century Camera, Model 46

WITH REVOLVING BACK

In originality of design, perfection of detail, mechanical construction, complete adjustments and ease of manipulation, Model 46 stands pre-eminent. In this camera we introduce the following features :



Double-section, brass bound Telescopic Bed. Patent Pinion Lock, Swing Back and Bed, operated with Rack and Pinion.

The construction of the bed insures a smooth movement for focusing and provides an absolutely rigid support for the lens, even

when the bellows is extended to its full capacity. The focusing pinion, when pushed in flush with the bed securely locks the second section in any desired position. The extra length of bellows admits of copying and similar work.

Model 46 is fitted with the Centar Lens, Series II, and No. 1 Automatic Shutter, with triplicate movement and separate lever for focusing. The back combination of the Centar Lens, when used alone, forms a most excellent type of long focus single achromatic lens—of great value for photographing distant objects. Lens and shutter are described on pages 37 and 41.

SPECIFICATIONS

	4 x 5	5 x 7	6½ x 8½	8 x 10
Dimensions	6½ x 3¾ x 6¼	8⅞ x 4 x 8½	10⅝ x 4¾ x 10½	12 x 4½ x 11⅝
Length of Bellows	11¼"	17"	21"	22½"
Weight	3 lbs.	5 lbs. 4 oz.	8½ lbs.	9 lbs. 4 oz.

PRICE

Including one Double Plate Holder and Sole Leather Carrying Case.

	4 x 5	5 x 7	6½ x 8½	8 x 10*
Century Camera, Model 46, with Centar Lens, Series II	\$ 32.00	\$ 40.00	\$ 57.00	\$ 70.00
With B. & L. Plastigmat Lens	69.95	85.30	124.90	146.90
With Zeiss-Tessar II b Lens	69.95	96.80	168.40	210.90
With Zeiss-Protar VII a Lens	89.45	112.30	144.40	224.40
Extra for Graflex Focal Plane Shutter	22.00	24.00	27.00	31.00
Extra Double Plate Holders, each	1.00	1.25	1.75	2.00

*Has Reversible Back instead of Revolving Back. For complete particulars regarding Special Equipments with Anastigmat Lenses, see page 26.

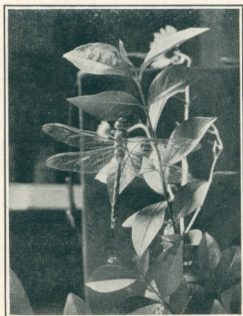
The Century Grand

WITH REVOLVING BACK

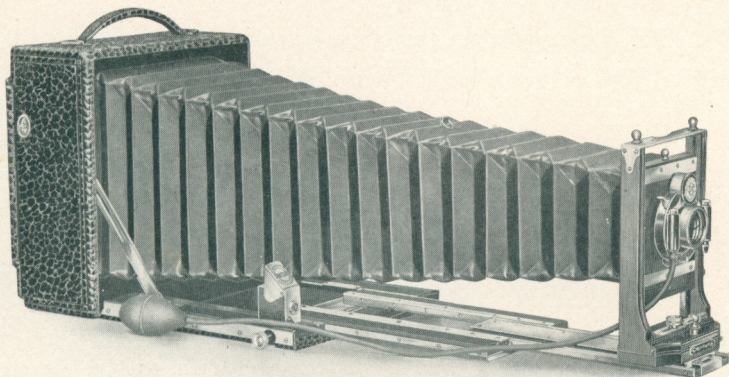
Wherever Cameras are used, the Century Grand is known and recognized, and rightly too, as an instrument of most superior merit. It contains more real improvements and exclusive features than any other folding plate camera in the market, with the exception of the Century Grand Senior. The general design, solid construction, rigidity of every part, portability, easy means of manipulating all adjustments, and fine finish of both wood and brass work are noticeable features.

The Century Grand is built throughout of mahogany—selected and kiln-dried, with all joints dovetailed. The Camera is handsomely covered with fine black special grain cowhide, and has a padded handle for carrying. The metal work is polished and lacquered in a rich gold color. The bellows is made of red leather, lined with rubber cloth insuring elasticity and rendering it absolutely light-proof.

The Triple-section Telescopic Bed is made on an entirely new principle, and so arranged that the different sections operate by a single pinion at the side. When pushed in, this pinion acts as a lock, holding the different sections of the bed absolutely firm and rigid at any desired point. The section carrying lens and shutter moves first by turning the milled head, and when fully extended locks automatically into, and at the same time carries forward, the second section by means of a continuous rack. A new method is employed in fitting the first section of the bed giving an exceptionally easy and smooth movement when focusing, as the same amount of friction exists whether the first section of the bed is entirely, or only partly, extended.



Each of the three sections is bound with metal to prevent any possibility of lost motion, and brass guides on top of the bed serve to insure strength and perfect rigidity—a feature which will appeal very strongly to all photographers. The bed is attached to the camera by a brass piano hinge extending the full width, adding strength and beauty to the entire equipment.



The Century Grand, Fully Extended.

The front has both vertical and horizontal movements and is held securely at any desired point on the bed by an automatic clamp.

A description of the exclusive Century feature—the Revolving Back—will be found on page 4.

The Century Grand is regularly equipped with Centar Lens, Series II. This lens is of the symmetrical type, perfectly achromatic, rectilinear, and of superior covering power and definition. It is admirably adapted for portraits, groups, architectural subjects, marine views, landscapes, copying, flashlight pictures, etc.—in fact, the Centar Lens is designed for general photography.

The front and back combinations may be used alone as long-focus objectives. In this form they are particularly well adapted for distant views, mountain scenery, and all remote subjects, where extreme speed is not essential. The focal length of either the front or back lens when used alone is double that of the complete lens, and the size of the image is therefore about twice that given by the compound lens.

Our latest and best Shutter—the No. 1 Automatic—is fitted to the Century Grand. Its many attractive features and advantages will be appreciated by both amateur and professional photographers. The Automatic operates for instantaneous, time and bulb exposures. The mechanism is so constructed that in moving to terminate an exposure it will automatically set itself for the next exposure. There can be no question as to “whether the Shutter is set”, as it is always ready for instant use, being released and set by simply pressing the

bulb. The diaphragms are marked in accordance with the standard U. S. system. Both lens and shutter are fully described on pages 37 and 41.

The Century Grand may, of course, be supplied with the various types of high-grade Anastigmat Lenses. The Anastigmat Lens—that is, if it is desired to employ it to the best possible advantage and derive from it the best that it can do—naturally suggests, in fact necessitates, the use of the Graflex Focal Plane Shutter. This shutter is fitted to all Century Cameras in a manner to conform to the general style and finish of the camera.

The Century Grand is enclosed in a handsome sole leather carrying case, plush-lined, having a compartment at one end to accommodate five extra plate holders. A carrying case which will hold camera with Graflex Focal Plane Shutter attached is supplied in place of regular case without extra charge when this outfit is ordered complete. Nothing has been spared to make the Century Grand absolutely the best camera in every detail of construction ever offered, and the success of our efforts is attested by the enviable reputation this instrument has made for itself among the foremost photographers.

Our claims for superiority in design, general construction and numerous exclusive features, are all justified—as an examination will prove. The Century Grand speaks for itself, and stands to-day as a representative camera of the highest possible type.

SPECIFICATIONS

	4 x 5	5 x 7	6½ x 8½
Dimensions	6⅝ x 3¾ x 6¼	8⅞ x 4⅞ x 8½	10⅝ x 4¾ x 10½
Length of Bellows	17"	23½"	28"
Weight	3 lbs. 4 oz.	5 lbs. 8 oz.	9 lbs.

PRICE

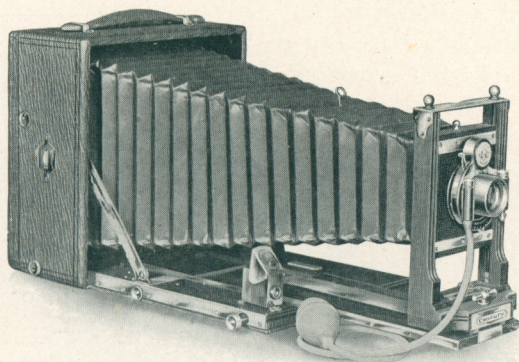
Including one Double Plate Holder and handsome Plush-Lined Sole Leather Case

	4 x 5	5 x 7	6½ x 8½
Century Grand, with Centar Lens, Series II	\$ 40.00	\$ 50.00	\$ 67.00
With B. & L. Plastigmat Lens	77.95	95.30	134.90
With Zeiss-Tessar II b Lens	77.95	106.80	178.40
With Zeiss-Protar VII a Lens	97.45	122.30	154.40
Extra for Graflex Focal Plane Shutter	22.00	24.00	27.00
Extra Double Plate Holders, each	1.00	1.25	1.75

For complete particulars regarding Special Equipments fitted with Anastigmat Lenses see page 26.

Century Camera, Model 47

WITH REVOLVING BACK



There are many photographic workers whose camera requirements will at last find realization in the Century Model 47. Model 47, by the way, now makes its first appearance, and when its various adjustments and features have been fully considered,

there can indeed be no question but that it represents the fulfillment of some exceedingly practical ideas in camera construction.

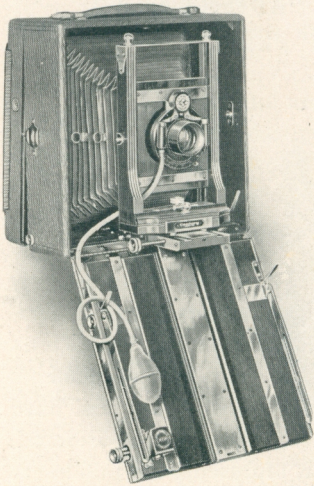
Model 47 has a Double-section, Brass-bound Telescopic Bed, which insures perfectly smooth movement for focusing, and likewise an absolutely rigid support even when the bellows is fully extended.

The extended section of the bed is securely locked in any position by merely pushing in the focusing pinion.

Model 47 is also adapted for use with extreme Wide Angle Lenses having the Detachable Side Arms for Dropping Bed; also Supplementary Bed with rack and pinion movement; also Vertical Central Swing Back and Horizontal Side Swing and each one of these adjustments is particularly noteworthy by reason of its extreme simplicity and its ease of operation.

Model 47 has also the Revolving Back, and every detail in construction bears evidence of the careful and painstaking workmanship which characterizes a Century Camera. The front has both vertical and horizontal movements, the rising and falling movement being controlled by our new self-locking device. A turn raises (or lowers) the front and locks it in place. The position of the front or the bed is also firmly secured at any desired point by our Automatic Clamp.

The Centar Lens, Series II, and No. 1 Century Automatic Shutter, are supplied with this equipment. The Centar Lens being of the symmetrical type of construction, the back combination may be used alone, thus doubling the focus of the lens when used as a



doublet. This feature will be found of considerable advantage in photographing distant objects. Description of this lens will be found on page 37, and of the shutter on page 41.

A full and complete description of the Graflex Focal Plane Shutter which is recommended with all high-grade Century equipments, will be found on pages 42 and 43. This shutter will most assuredly add greatly to the satisfactoriness of the Model 47 or any other fine outfit.

When the Graflex Focal Plane Shutter is ordered a carrying case which will accommodate the camera with shutter attached is supplied in place of the regular case without extra charge.

SPECIFICATIONS

	4 x 5	5 x 7	6½ x 8½
Dimensions	6½ x 3¾ x 6¼	8¾ x 4 x 8½	10⅝ x 4¾ x 10½
Length of Bellows	11½"	17"	21"
Weight	3 lbs. 1 oz.	5 lbs. 6 oz.	8 lbs. 8 oz.

PRICE

Including one Double Plate Holder and Plush-Lined Sole Leather Carrying Case

	4 x 5	5 x 7	6½ x 8½
Century Camera Model 47, with Centar Lens, Series II.	\$ 47.50	\$ 57.50	\$ 75.00
With B. and L. Plastigmat Lens	85.45	102.80	142.90
With Zeiss-Tessar II b Lens	85.45	114.30	186.40
With Zeiss-Protar VII a Lens	104.95	129.80	162.40
Extra for Graflex Focal Plane Shutter	22.00	24.00	27.00
Extra Double Plate Holders, each	1.00	1.25	1.75

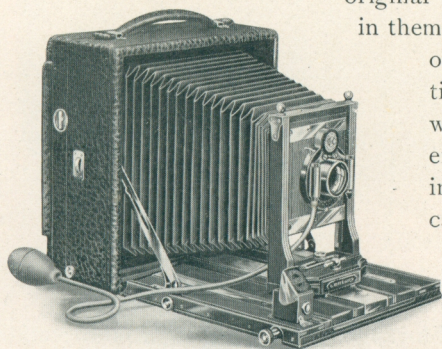
For complete particulars regarding Special Equipments, fitted with Anastigmat Lenses. see page 26.



Century Grand Senior

WITH REVOLVING BACK

Almost from the very moment that Century Cameras came into existence they became famous. The many startlingly new and original ideas which were embodied in them, their unusually superior style



of construction, and the continual aim to better them has won for the Century a deservedly enviable reputation. The striving to produce the perfect camera has developed the Century Grand Senior—a camera that has added materially to our reputation for progressiveness and originality. Illustration and description must be

Century Grand Senior Partly Extended.

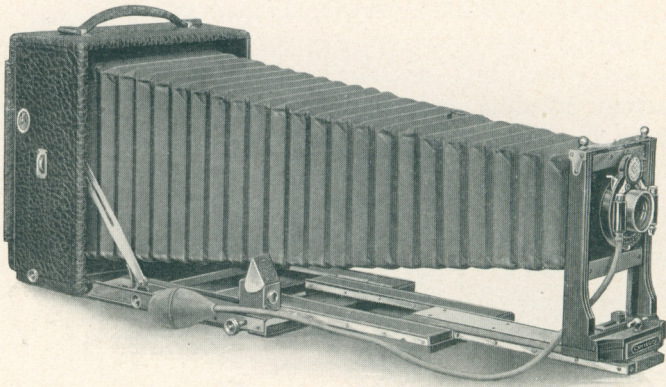
largely depended upon, but they do only scant justice to the Century Grand Senior—the skill in its design and the perfection and simplification of its adjustments.

The Century Grand Senior, while differing in construction from the regular Grand, contains all the features which have popularized that camera, and in addition has—

- Detachable Side Arms, for Dropping Bed,
- Supplementary Bed, for using extreme Wide Angle Lens with Rack and Pinion Movement.
- Vertical Central Swing Back,
- Horizontal Side Swing for correcting violent perspective lines.

In connection with the Century Swing Bed, the Vertical and Horizontal Swing Backs give the greatest range and adjustment ever attained in a hand camera. And it is worthy of note that the Grand Senior is an uncommon example of a cycle type of camera having Double Swing Back and Swing Bed, free from all complicated parts and so neatly adapted as to add practically nothing to either the bulk or the weight.

The telescopic bed is made in three sections, all operated by a single pinion, with the Century pinion lock. The same amount of friction exists whether the front section is fully or only partly



Century Grand Senior, Fully Extended

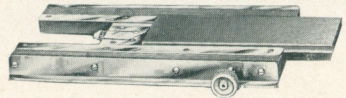
extended, and by a peculiar arrangement of the wood and metal parts, the bed resists atmospheric changes to a remarkable degree.

The section carrying lens and shutter moves first by turning the focusing pinion, and when fully extended locks automatically into, and at the same time carries forward, the second section by means of a continuous rack. Each of the three sections is bound with metal to prevent any possibility of lost motion, and brass guides on top of the bed serve to insure strength and perfect rigidity. The bed is attached to the camera by a piano hinge extending the full width, adding strength and beauty to the entire equipment.

The front has both vertical and horizontal movements, the former being governed by our new self-locking device. It is held securely at any desired point on the bed by our new Automatic Clamp.

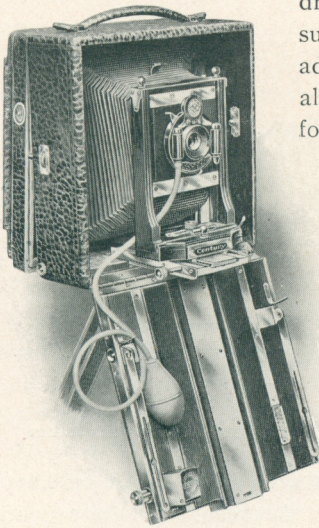
The Grand Senior is regularly equipped with Centar Lens, Series II. This is a lens of the symmetrical type, perfectly achromatic, rectilinear and of superior covering power and definition. Either the front or back combination can be used alone for distant views, mountain scenery, etc., and when so used the focus is double that of the compound lens. The lens is fully described on page 37.

The No. 1 Automatic Shutter is regularly fitted. See page 41 for description.



Supplementary Bed for Wide Angle Lenses

By means of a supplementary bed, very short focus or wide angle lenses can be used with equal facility. The main bed drops by detaching the side arms, and the supplementary bed, which can be instantly adjusted, supports the front. This bed also has rack and pinion for accurate focusing. The Wide Angle Bed, when adjusted, locks automatically in place, and cannot become accidentally detached. The horizontal and vertical swings are available for both regular and wide angle lenses.



Showing Supplementary Bed Attached for Wide Angle Lens

The Anastigmat Lens and Graflex Focal Plane Shutter would both of course add greatly to complete the Century Grand Senior, in fact the two should always be considered together in completing any high-class equipment. Various well-known Anastigmats may be fitted. The Graflex Shutter is made to harmonize with the general appearance and finish of the camera and when ordered as part of one of these outfits, a carrying case to hold camera with shutter attached is supplied without extra charge, in place of regular carrying case.

As previously stated, the Century Grand Senior must be seen to fully appreciate its many meritorious and exclusive features. Our claims for superiority—in design, in construction, in adjustments, in finish, in optical and mechanical excellence—will be fully substantiated by a critical examination.

SPECIFICATIONS

	4 x 5	5 x 7	6 1/2 x 8 1/2
Dimensions	6 5/8 x 4 x 6 1/4	8 7/8 x 4 1/8 x 8 1/2	10 3/8 x 4 3/4 x 10 1/2
Length of Bellows	17"	23 1/2"	28"
Weight	3 lbs. 6 oz.	5 lbs. 12 oz.	9 lbs.

PRICE

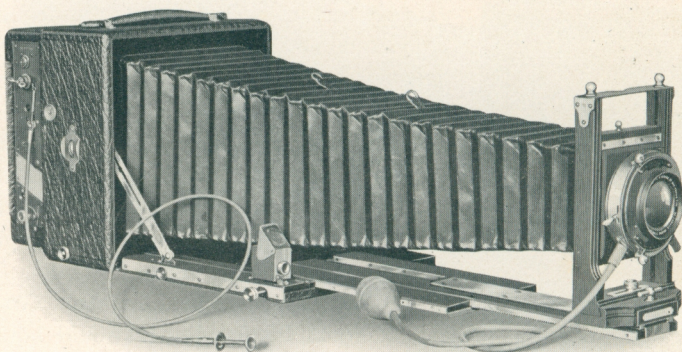
Including one Double Plate Holder and handsome Plush-Lined Sole Leather Case

	4 x 5	5 x 7	6 1/2 x 8 1/2
Century Grand Sr., with Centar Lens, Series II	\$ 53.00	\$ 63.00	\$ 80.00
With B. & L. Plastigmat Lens	90.95	108.30	147.90
With Zeiss-Tessar II b Lens	90.95	119.80	191.40
With Zeiss-Protar VII a Lens	110.45	135.30	167.40
Extra for Graflex Focal Plane Shutter	22.00	24.00	27.00
Extra Double Plate Holders, each	1.00	1.25	1.75

For complete particulars regarding Special Equipments fitted with Anastigmat Lenses, see page 26.

Century Special Equipments

THE ACME OF PERFECTION



Century Grand Senior Special, Zeiss Lens and Graflex Focal Plane Shutter

WHAT A CENTURY
SPECIAL IS

The Century Models 46 and 47, Grand and Grand Senior Specials are the regular Cameras as described on pages 18 to 23, fitted with either a Bausch & Lomb Plastigmat Lens, Zeiss-Tessar II b, Zeiss Convertible Protar VIIa, or Cooke Series III, as may be preferred, and No. 1 Automatic or B. & L. Volute and Graflex Focal Plane Shutter.

A FEW WORDS ON
ANASTIGMAT LENSES

The Anastigmat Lens was designed to overcome the defect which exists in the Rectilinear, or the Symmetrical, in that, in both of these two latter types it is not possible to bring into focus at the same time vertical or horizontal lines lying in the same plane. The optical properties introduced in its manufacture, give among other advantages extreme speed, minute definition over the entire plate, great covering power, without the use of small stops or diaphragms, brilliant illumination and remarkable depth of focus. The reflected image of an Anastigmat, even with the lens at full opening, possesses a sharpness and noticeable "crispness" that is impossible to produce with the ordinary lens. It is adapted for every conceivable photographic purpose—portraiture, groups, landscapes, animal life, architectural subjects, interiors, copying, enlarging, process work, etc.—in fact, it is the universal lens.

The possession of an Anastigmat Lens broadens the photographer's opportunities. Instantaneous exposures are no longer con-

fined to brilliant days when conditions of light are just right—but fully-timed pictures may be made in cloudy and dull weather. The advantage of speed applies with equal force to time exposures. For example, if a portrait required an exposure of say four seconds, with an ordinary Symmetrical Lens, an Anastigmat would reduce the time nearly one-half—a very important consideration, especially if the subject happens to be a child.

THE VALUE OF THE
ANASTIGMAT WITH
AND WITHOUT THE
FOCAL PLANE SHUTTER

The absence of completeness—and more than that—the want of thorough effectiveness in a Century Special Camera without the proper kind of a Shutter—prompts the recommendation of the Graflex Focal Plane Shutter as a necessary part of these Outfits. All the advantages of a high-class equipment, made up of a Century Model 46 or 47, a Century Grand or a Century Grand Senior, and a fast Anastigmat Lens, can not be secured without a Focal Plane Shutter. In fact an outfit of this kind is worthy of the very best shutter that can be provided for it. The Graflex Focal Plane Shutter is fitted with a removable and interchangeable revolving back so that the shutter may be removed from the camera whenever so desired, and the camera used in the ordinary manner, the Century No. 1 Automatic or the Volute Shutter being likewise, when so desired, a part of the outfit.

ON THE FITTING OF
SPECIAL LENSES
AND SHUTTERS

Fitting a shutter to an Anastigmat or other high-grade lens and the proper adjustment of lens and shutter to the camera is a delicate operation. Unless each lens is accurately centered and so mounted as to maintain absolutely the correct optical distance between front and back combinations, the best results can not be obtained. To avoid errors as well as to maintain our present high reputation for perfect goods, we do not list Centurys without lens or shutter, as we can only guarantee the whole equipment to prove satisfactory to the purchaser when the *camera, lens and shutter are supplied by us.*

Each Century Special is enclosed in a handsome sole leather carrying case, plush-lined, with lock, key and two snap catches. The case has a compartment for five extra plate holders. When Focal Plane Shutter is ordered as part of the outfit, a case which will hold the camera with shutter attached, is supplied in place of regular case, without extra charge.

The prices are quoted on next page.



Century Special Equipments

The combinations listed below are carried in stock and can be promptly furnished. The cost of any other make of Lens or Shutter will be quoted on request. The following prices include the B. & L. Volute Shutter. The Graflex Focal Plane Shutter will be added at prices quoted below. If our No. 1 Automatic Shutter is desired in place of the Volute, deduct from these prices allowance as given below :

Camera	Size	With B. & L. Plastigmat Lens and Volute Shutter	With Zeiss-Protar VII a and Volute Shutter	With Zeiss-Tessar II b and Volute Shutter	With Cooke Series III and Volute Shutter
Century Model 46	4 x 5	No. 2, \$ 84.25	No. 3, \$103.75	No. 5, \$ 84.25	No. 4, \$ 83.75
Century Model 46	5 x 7	No. 3, 99.60	No. 8, 126.60	No. 6, 113.10	No. 6, 106.60
Century Model 46	6½ x 8½	No. 5, 141.20	No. 11, 160.70	No. 8, 185.10	No. 7, 157.60
Century Model 46	8 x 10	No. 6, 163.60	No. 17, 241.10	No. 9, 227.60	Not Furnished
Century Grand	4 x 5	No. 2, 92.25	No. 3, 111.75	No. 5, 92.25	No. 4, 91.75
Century Grand	5 x 7	No. 3, 109.60	No. 8, 136.60	No. 6, 123.10	No. 6, 116.60
Century Grand	6½ x 8½	No. 5, 151.20	No. 11, 170.70	No. 8, 195.10	No. 7, 167.60
Century Model 47	4 x 5	No. 2, 99.75	No. 3, 119.25	No. 5, 99.75	No. 4, 99.25
Century Model 47	5 x 7	No. 3, 117.10	No. 8, 144.10	No. 6, 130.60	No. 6, 124.10
Century Model 47	6½ x 8½	No. 5, 159.20	No. 11, 178.70	No. 8, 203.10	No. 7, 175.60
Century Grand Senior	4 x 5	No. 2, 105.25	No. 3, 124.75	No. 5, 105.25	No. 4, 104.75
Century Grand Senior	5 x 7	No. 3, 122.60	No. 8, 149.60	No. 6, 136.10	No. 6, 129.60
Century Grand Senior	6½ x 8½	No. 5, 164.20	No. 11, 183.70	No. 8, 208.10	No. 7, 180.60

EXTRA

Extra for	4 x 5	5 x 7	6½ x 8½	8 x 10	Deduct for Automatic Shutter in Place of
Graflex Focal Plane Shutter	\$ 22.00	\$ 24.00	\$ 27.00	\$ 31.00	No. 1 Volute \$14.30 No. 2 Volute 16.30 No. 3 Volute 16.70
Zeiss-Protar Series V Wide Angle Lens	No. 1, 22.50	No. 2, 22.50	No. 3, 28.00	No. 4, 35.00	

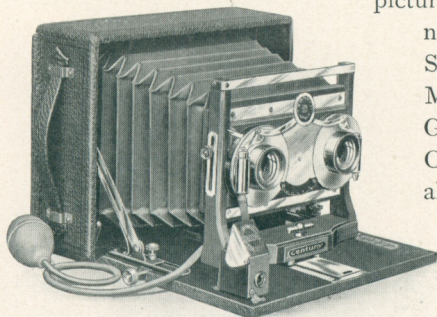
NOTE—No. 1 Volute Shutter is fitted to Plastigmat Nos. 2 and 3; Zeiss VII a Nos. 3 and 8; Zeiss-Tessar II b Nos. 5 and 6; Cooke III No. 4. No. 2 Volute Shutter is fitted to Plastigmat No. 5; Zeiss-Protar VII a No. 11; Zeiss-Tessar II b No. 6; Cooke III No. 6. No. 3 Volute Shutter is fitted to Zeiss-Tessar II b No. 8; Cooke III No. 7.



Century Stereoscopic Cameras

WITH AUTOMATIC ROLLER DIVISION

Stereoscopic Photography is a branch of picture making which is daily enlisting more enthusiasts. The making of stereoscopic pictures is most attractive and fascinating.



For this class of work a Stereo Compact Camera, and also Models 43, 46, 47 and the Century Grand Stereos are offered. The Century Stereo Compact embodies all requisite adjustments—including rack and pinion, swing back, swing bed, adjustable front, automatic bed

clamp, No. 3 Automatic Shutter, and a pair of matched Rapid Rectilinear Lenses. It is extremely portable, measuring only $2\frac{1}{2}$ x $6\frac{1}{2}$ x $8\frac{1}{2}$ inches constructed throughout of mahogany, and covered with fine black cowhide leather.

As far as outside dimensions, focal capacity and general design are concerned, the Stereoscopic Centurys, Models 43, 46, 47 and the Century Grand correspond with the regular models, but in place of one lens for full-size 5 x 7 pictures, they are fitted with a matched pair of lenses and the Automatic Double Valve Stereoscopic Shutter. Models 43, 46, 47 and the Century Grand are fitted with a pair of matched Rapid Symmetrical Lenses. The regular lens and shutter for making full-size 5 x 7 pictures can be added to the outfit at any time, in which manner a most complete photographic equipment is provided.

PRICE

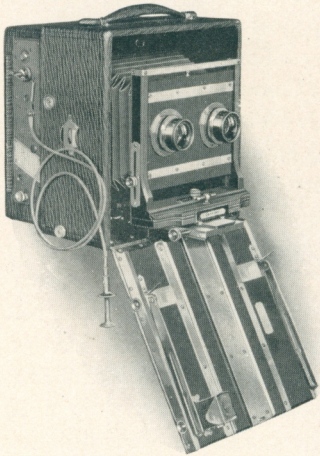
Including Sole Leather Case and one
Double Plate Holder.

Century Stereo Compact	\$ 35.00
Century Stereo Model 43	48.00
Century Stereo Model 46	60.00
Century Stereo Grand	70.00
Century Stereo Model 47	77.50
Extra for 5 x 7 Rapid Symmetrical Lens and No. 1 Automatic Shutter	13.50



Century Stereo Special Camera

The Stereo Century Special Equipments are designed with the idea of offering the finest Stereoscopic outfits in the world. They are equipped with high-grade Anastigmat Lenses and the Graflex Focal Plane Shutter.



Century Stereo Special, Model 47, With Zeiss-Tessar Lenses.

To these cameras may also be added a regular 5 x 7 lens and shutter of any desired type, so that when so equipped there is provided an outfit which, for range of work, can hardly be equalled.

The Stereo Special, Model 47, possesses great utility, by reason of the drop bed feature, by which it is rendered available for extreme wide angle stereo work. At the same time it possesses a bellows capacity of 17 inches, which makes it possible to employ lenses of more than ordinary focal length.

With all Special Stereo Outfits is supplied a plush-lined carrying case with lock and key, with space at one end for camera, with Focal Plane Shutter attached, and at the other for extra holders.

PRICES

Including Graflex Focal Plane Shutter, Double Plate Holder and Carrying Case

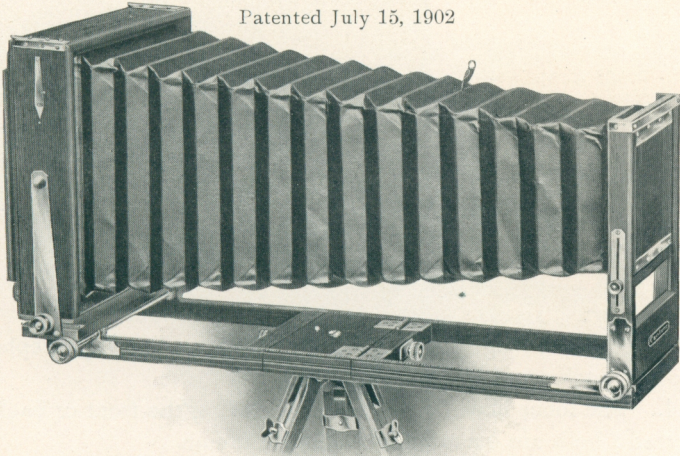
Fitted With	Century Stereo 46	Century Stereo Grand	Century Stereo 47
Pair No. 1 B. & L. Plastigmat Lenses	\$ 136.20	\$ 146.20	\$ 153.70
Pair No. 4 Zeiss-Tessar II b Lenses	135.20	145.20	152.70
Pair No. 2 Zeiss-Protar VII a Lenses	177.20	187.20	194.70
Pair No. 3 Zeiss-Protar VII a Lenses	187.20	197.20	204.70
Extra for Pair No. 1 Zeiss-Protar V Lenses Matched			47.70



Century View Camera No. 1

WITH DOUBLE GROOVED BED

Patented July 15, 1902

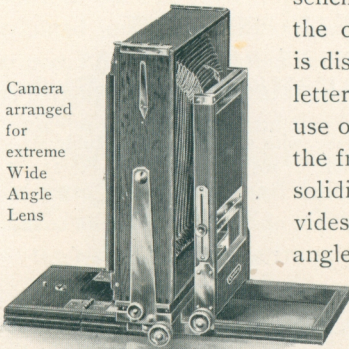


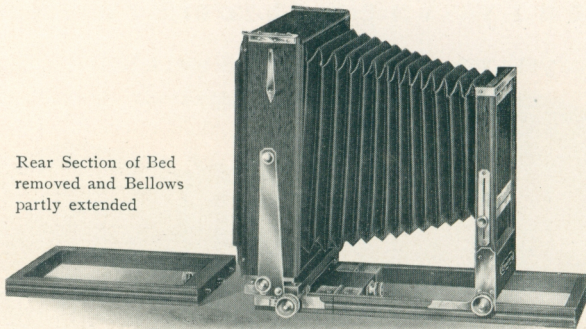
The Century View Camera fully meets the demands for an instrument combining in the highest degree, convenience, strength, compactness, portability, ease of manipulation and adaptability for the wide range of work constantly coming before the professional, and which advanced amateurs often attempt with but little satisfaction, owing to the very limited field of work covered by many types of cameras.

SPECIAL FEATURES AND POINTS OF EXCELLENCE

1. A Double Grooved Bed. The scheme of operating the front and back of the camera in separate grooves on the bed is distinctly a "Century idea," covered by letters patent. This method permits the use of extra long side brackets supporting the front and back, insuring strength and solidity. A double grooved bed also provides for a very much shorter focus wide angle lens, as the front carrying lens can be brought closer to the ground glass than is possible with the ordinary type of view camera.

Camera arranged for extreme Wide Angle Lens





Rear Section of Bed removed and Bellows partly extended

2. Perfect rigidity in every part in any position.
3. Extreme length of bellows for copying, enlarging, telephoto, and other work requiring long focus lenses.
4. The focus may be adjusted by moving the front or back as preferred; both are operated by rack and pinion.
5. Three Section Bed. The second section is hinged and arranged to fold close to the camera, even when lens and shutter are attached. The third section adjusts at the back by means of a large thumb-screw, and two pins fitting in brass sockets, avoiding any lost motion.
6. Automatic Stop Lock, to prevent back going beyond edge of bed.
7. Adjustable Sliding Front of great range; rack and pinion movement.
8. Both Horizontal and Vertical Swings operate at the center, with set screws at either side. Brass Plumb Indicator for adjusting swing back.
9. Reversible Back for horizontal and upright views.

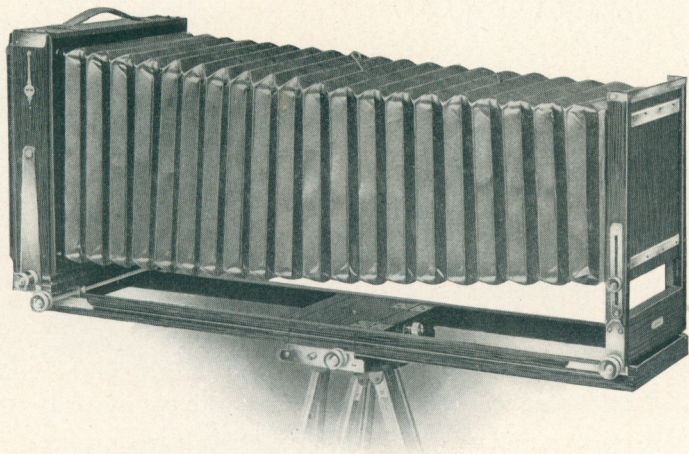
FOCAL CAPACITY OR LENGTH OF BELLOWS
 5 x 7—22 inches. 6½ x 8½—27 inches. 8 x 10—32 inches. 11 x 14—37 inches.

PRICE

Including one Plate Holder and Canvas Case, with space for Five Holders

	5 x 7	6½ x 8½	8 x 10	11 x 14
Century View Camera, No. 1	\$ 21.00	\$ 22.00	\$ 25.00	\$ 36.00
Graflex Focal Plane Shutter, extra	24.00	27.00	31.00	Not furnished
Rapid Symmetrical Lens and No. 4 Shutter, extra	10.00	15.00	18.00	
Rapid Symmetrical Lens and No. 1 Shutter, extra	13.50	18.50	21.50	
Extra Double Plate Holders, each	1.25	1.75	2.00	4.50
Carrying Case, if made to hold tripod, extra75	.75	.75	

Century View Camera No. 2

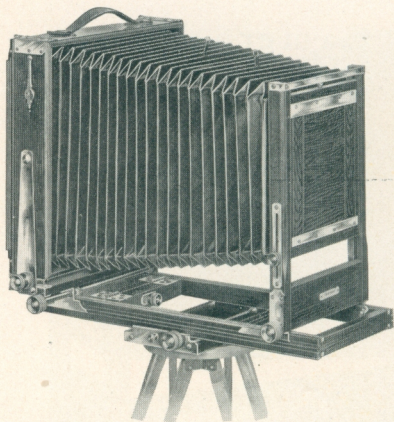


It is decidedly inadequate to say that the Century View Camera No. 2 is the most superior View Camera which has ever been offered. This, however, was the one aim in the production of it and we feel satisfied that we have succeeded in accomplishing the desired results. The Century View No. 1 in itself represents an almost unexcelled type of View Camera. In the No. 2 we have incorporated many of the features of the No. 1—and they are all good ones—and these, with a number of new and valuable improvements, have given the No. 2 an acknowledged and deserved prestige.

An exclusive Century idea is the auxiliary base, which is, in reality, a supplementary bed on which the entire camera moves forward or back by rack and pinion, so that the weight is evenly distributed and the camera always in perfect balance when on the tripod, no matter whether an extra long focus or a wide angle lens is employed. The advantage of this feature will at once appeal to both the professional and the advanced amateur photographer.

The bellows is almost square, tapering but very little, thus giving an extra large front and lens board which will accommodate large lenses and likewise inside shutters if desired. Both swings, as well as the rising and falling front, are operated by rack and pinion.

One of the essential factors of Century success has been the close attention to the details of Camera construction. Examine closely the No. 2 View and see whether this has not been borne out.



Everything that counts in producing a rigid, accurate and adaptable camera finds place in it.

The Graflex Focal Plane Shutter when fitted to a Century View Camera naturally adds to the efficiency of the outfit, as an equipment is then provided which permits of all kinds of work from time exposures to fast speed work. The Graflex Shutter when ordered for Century View Cameras is supplied to conform to the camera, being furnished in beautifully polished mahogany, in every way in keeping with the camera.

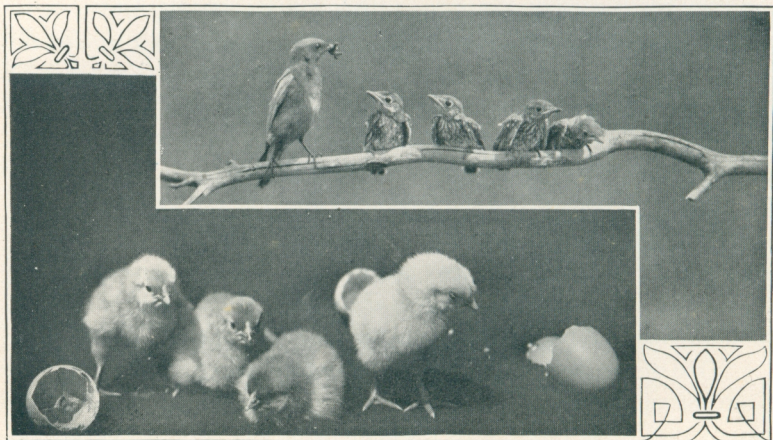
FOCAL CAPACITY OR LENGTH OF BELLOWS

6½ x 8½—27 inches. 8 x 10—32 inches.

PRICE

Including one Plate Holder and Canvas Case, with space for Five Holders

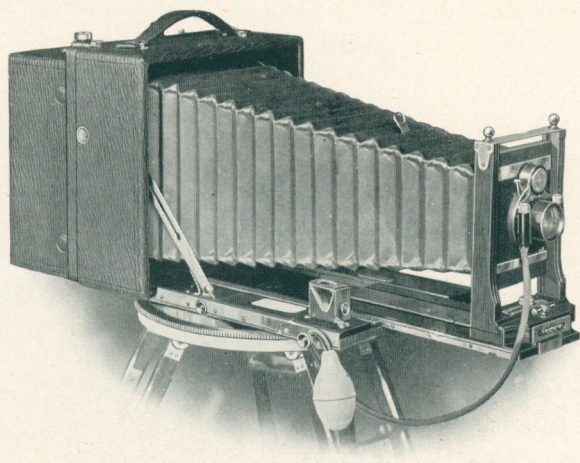
	6½ x 8½	8 x 10
Century View Camera No. 2	\$ 26.00	\$ 30.00
Graflex Focal Plane Shutter, extra	27.00	31.00
Rapid Symmetrical Lens and No. 4 Shutter, extra	15.00	18.00
Rapid Symmetrical Lens and No. 1 Shutter, extra	18.50	21.50
Extra Double Plate Holders, each	1.75	2.00
Carrying Case, if made to hold tripod, extra75	.75





The Cirkut Panoramic Outfit.

WHAT PANORAMIC PHOTOGRAPHY IS The introduction of Cirkut Apparatus most assuredly and admittedly marks a new epoch in that most delightful field of all photographic work—the panoramic. The meaning that is gathered from the word panoramic



itself, conveys an idea of the kind of photography possible with the Cirkut—a complete and true picture just as one would see it were one to stand in a central position and view the scene in every direction.

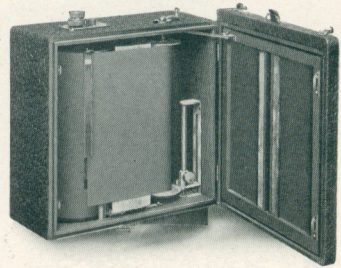
Panoramic photography—true panoramic photography—has been so long in presenting itself, on account of the many and great apparent difficulties in constructing apparatus that would do the work properly. An instrument that will expose a sensitized surface many feet in length, avoiding the violent distortion invariably in evidence in the ordinary type of panoramic camera, is truly a Panoramic Camera, and the only one justly entitled to that distinction. That is

the Cirkut. Its plan of construction does not contemplate the use of the short focus lens. It offers great latitude in the focal length of lenses. With the Cirkut, distortion is practically eliminated and the long-looked-for real Panoramic Camera is an accomplished fact.

THE NEW The wonderful success of the original No. 10 CIRKUT OUTFIT and 16 Cirkut Cameras has led to the introduction of the smaller No. 6 and No. 8 Outfits, the former adapted for film $6\frac{1}{2}$ inches wide, the latter for 8-inch widths.

The Cirkut Panoramic Outfit is in itself a most complete affair, being made up of a camera which can be used in the ordinary manner for plates if desired, and a Panoramic Attachment which is easily and quickly attached to the camera, thus converting it into a Panoramic Outfit. The attachment in itself is much like an ordinary Cartridge Roll Holder, in that it is made to use Eastman Daylight-loading Cartridge Film. In addition it contains the mechanism which, when the outfit is in operation, unwinds the film past a slot on a roller and in so doing exposes it and at the same time revolves the camera about on an axis—a special tripod and top being furnished. A pressure on the release is all that is necessary to start the motor—another pressure stops it; thus negatives of any desired length up to 6 feet with the No. 6, and 8 feet with the No. 8 may be made. A complete circle of 360° may thus be photographed if desired.

There is an indicator on the top of the film holder showing the exact quantity of film exposed and that remaining unexposed. By another very ingenious arrangement one is enabled to determine, before exposure is made, how long a photograph the view decided on will be.

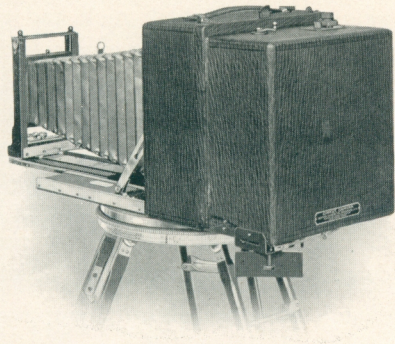


Cirkut Attachment

ADAPTABILITY OF There is
THE CIRKUT one, very

important fact relating to Cirkut Outfits that must not be overlooked and that is their general adaptability. They are not alone Panoramic Outfits. They are more. With them one is not limited as to size of the photograph to be made. The picture is made to conform with the ideas of the photographer. How frequently it happens that the composition of a beautiful landscape is marred because with a 5×7 camera it must conform to the inartistic limita-

tions of the size of the plate. Not so with the Cirkut. Would you have your photograph $6\frac{1}{2} \times 8\frac{1}{2}$, make it so; would your picture be better were it $6\frac{1}{2} \times 10$ or $6\frac{1}{2} \times 12$ —all really artistic dimensions—make it so. All this can be done without the least difficulty. The camera is loaded with a roll of film 3 feet or 6 feet long, as may be desired, and a succession of exposures, one after the other, of whatever length the operator may determine, is made by merely starting and stopping the motor until the roll of film has all been exposed. Then additional rolls may be loaded in broad daylight.



Attachment Fitted to 5 x 7 Camera.

With the No. 6 Outfit, photographs $6\frac{1}{2}$ inches wide and any length up to 6 feet may be made, and with the No. 8 Outfit, 8 inches wide and any length up to 8 feet, all on Eastman Daylight-loading Film. Compare this operation with that of the operator who goes out with the conventional $6\frac{1}{2} \times 8\frac{1}{2}$ or 8×10 View Camera and the necessary quota of glass plates and other paraphernalia, and then the results are only the conventional $6\frac{1}{2} \times 8\frac{1}{2}$ or 8×10 photographs.

WHAT CAN BE DONE WITH THE CIRKUT The variety of subjects for panoramic pictures is almost unlimited. Scenery of all kinds, mountains, lakes, valleys, extensive manufacturing plants, college and university grounds, residences, private estates, groups, games, athletic sports, etc., may be made with the Cirkut.

Just consider the possibilities of a camera that will make, with one exposure, a negative any length desired up to six or eight feet. Unlimited in angle of view and equally sharp from end to end—this, in brief, describes the Cirkut Outfit. It is a most desirable and valuable addition to any equipment and in point of fact for successful panoramic work it is practically indispensable. Eastman Daylight-loading Film only is supplied for all Cirkut Apparatus.

AN EQUIPMENT INCOMPARABLY COMPLETE In addition to the Panoramic Outfit, either Cirkut No. 6 or No. 8 provides an equipment which permits of its use as a regular hand camera for plates when so desired, and while the camera is adapted for panoramic work, by removing the film attachment, a revolving



ground glass back is provided, which may be easily fitted, thus converting the outfit into a Revolving Back Plate Camera. With the No. 6, the camera is a 5 x 7; the No. 8 is 6½ x 8½.

The camera has a double-section brass-bound telescopic bed, swing back and bed, rack and pinion movements, extra bellows length, and is in every way up to the Century Standard.

The lens regularly supplied is the Centar Series II, with Century No. 1 Automatic Shutter.

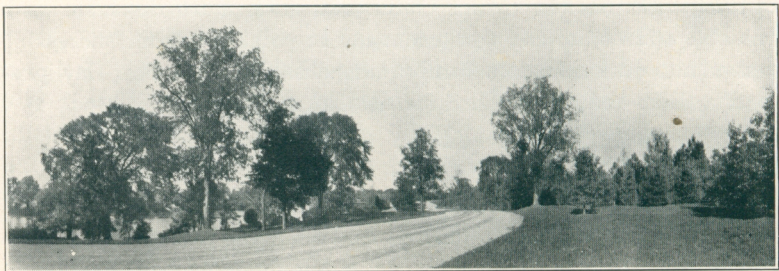
A double plate holder, a Crown Tripod, (the best tripod made) complete the outfit. There is nothing in the entire field of photographic apparatus which for completeness is in any way comparable with the Cirkut Panoramic Outfit. A carrying case which will hold the complete outfit is furnished. Cirkut Outfits will be sold complete only.

SPECIFICATIONS

	No. 6	No. 8
Width of Photograph	6½"	8"
Dimensions of Camera	8⅞ x 4¼ x 8½	10⅞ x 4¾ x 10½
Weight of Camera	5⅜ lbs.	8½ lbs.
Dimensions of Camera with Attachment	8⅞ x 8 x 8½	10⅞ x 8½ x 10½
Weight " " " "	9 lbs.	14 lbs.
Length of Bellows	17"	21"

PRICE

	No. 6	No. 8
Cirkut Panoramic Outfit, including Century Camera, Series II Centar Lens, No. 1 Automatic Shutter and Panoramic Attachment; also removable, Revolving Back and Double Plate Holder for Camera, Tripod and Carrying Case to hold complete equipment	\$ 112.50	\$ 175.00
With B. & L. Plastigmat Lens	No. 3 157.80	No. 5 242.90
With B. & L. Zeiss-Protar VII a	No. 9 197.30	No. 12 283.40
6½" x 3' Film, Roll80	
6½" x 6' " "	1.60	
8" x 4' " "		1.30
8" x 8' " "		2.60



Century Lenses

Century Lenses are made in the largest and best-equipped optical factory in the country, that of Bausch & Lomb Optical Company. Every process from the selection of the raw material through the successive steps of grinding, polishing, cementing and mounting, is accurately controlled. Every lens that does not reach the proper standard of quality to which all Century Lenses must conform, is rejected.

The Century Rapid Rectilinear Lenses are composed of two achromatic combinations of equal focus. They are sufficiently rapid for general amateur work, and possess good covering power and definition.

The Rapid Symmetrical is a higher type of lens than the Rectilinear, and possesses qualities not found in the ordinary double combination lenses of the Rectilinear form. It is made of superior glass and ground upon curves that insure increased covering power, ample speed for instantaneous exposures and a flat field.

The Centar Series II is a Symmetrical type of lens perfectly achromatic, Rectilinear and of superior, covering power and definition. It is admirably adapted for portraits, groups, architectural subjects, landscapes, copying, etc.

The front and back combinations may be used alone as long focus objectives. In this form they are particularly well adapted for distant views, mountain scenery and all remote subjects, where extreme speed is not essential. The focal length of either front or back lens, when used alone, is double that of the complete lens, and the size of the image is, therefore, about twice that given by the complete lens.

Wide Angle Lenses

A Century Wide Angle Lens is a valuable addition to any outfit. It includes from twenty-five to thirty degrees wider field than the Rapid Rectilinear, Rapid Symmetrical, or Centar Lenses and is particularly valuable for confined situations—interiors and certain architectural subjects. Being much shorter in focus, it permits placing the camera closer to the object.

Century Wide Angle Lenses fit the same shutter and interchange with the regular Rectilinear, Rapid Symmetrical and Centar Lenses.

PRICE

4 x 5, \$5.00

5 x 7, \$7.50

6½ x 8½, \$12.00

Anastigmat Lenses

The Rectilinear or Symmetrical Lenses with which hand cameras are ordinarily equipped possess one inherent defect impossible to overcome. This defect is astigmatism which may be defined as the inability to focus at the same time vertical and horizontal lines lying in the same plane.

The Anastigmat Lens with its superior correction has several advantages over the Rectilinear Lens. It has greater speed because it may be used with full opening, and the resulting image will be brilliant and sharp all over. The sharpness is not confined to one spot, as is the case with the Rectilinear Lens when used with full opening. It has greater covering power, that is area in which the image is sharply defined, and a flatter field permitting the formation of flat images, not curved. Its greater speed and covering enable it to be used therefore advantageously under conditions where the ordinary lens is valueless.

BAUSCH & LOMB-ZEISS TESSAR f-6.3
SERIES IIB

The Tessar is light and compact and particularly adapted for hand cameras. It is twice as fast as the ordinary camera lens, and gives sharp definition, illumination of unusual uniformity, and great covering power.

No.	Size of Plate Covered with Stop f-6-3 Inches	Equivalent Focus, Inches	Diameter of Lens, Inches	Price.	
				Lens Only	Fitted with Aluminum Volute Shutter
4	3 $\frac{1}{4}$ x 4 $\frac{1}{4}$	5 $\frac{8}{8}$	$\frac{7}{8}$	\$33.50	\$50.50
5	4 x 5	6 $\frac{1}{2}$	1	40.00	57.00
5a	4 $\frac{1}{4}$ x 6 $\frac{1}{2}$	7 $\frac{1}{16}$	1 $\frac{1}{2}$	49.00	67.50
6	5 x 7	8 $\frac{1}{4}$	1 $\frac{3}{8}$	59.50	78.00
7	5 x 8	10	1 $\frac{5}{8}$	80.50	99.00
8	6 $\frac{1}{2}$ x 8 $\frac{1}{2}$	12	2	118.50	138.50
9	8 x 10	14 $\frac{3}{8}$	2 $\frac{7}{16}$	154.00	174.00

BAUSCH & LOMB-ZEISS PROTAR LENS f-18
SERIES V

The B. & L.-Zeiss Protar Series v, is designed for extreme wide-angle work. This lens embraces a field of 110 degrees.

No.	Size	Equivalent Focus Inches	Price
1	4 $\frac{1}{4}$ x 6 $\frac{1}{2}$	3 $\frac{3}{8}$	\$22.50
2	5 x 7	4 $\frac{3}{8}$	22.50
3	6 $\frac{1}{2}$ x 8 $\frac{1}{2}$	5 $\frac{9}{16}$	28.00
4	8 x 10	7 $\frac{3}{16}$	35.00

BAUSCH & LOMB-ZEISS CONVERTIBLE PROTAR f-6.3
SERIES VIIA

These lenses are composed of two single, perfectly corrected, Anastigmats, of different foci, which may be used singly or in combination. When the single elements have different foci, the lens is convertible into three lenses of different foci, having a speed of f-7 or f-7.7, which is almost twice that of the ordinary camera lens.

No.	Size in Inches of Plate Covered with Full Aperture	Combinations of Single Protars, Focus		Combined Equivalent Focus, Inches	Speed	Price. Lens Only
		Front Lens	Back Lens			
1	3 $\frac{1}{4}$ x 3 $\frac{1}{4}$	7 $\frac{3}{16}$	7 $\frac{3}{16}$	4 $\frac{1}{2}$	f-6.3	\$ 51.00
2	3 $\frac{1}{4}$ x 4 $\frac{1}{4}$	8 $\frac{3}{4}$	7 $\frac{3}{16}$	4 $\frac{1}{2}$	f-7	54 50
3	4 x 5	11 $\frac{3}{16}$	7 $\frac{3}{16}$	5	f-7.7	59.50
4	4 x 5	8 $\frac{3}{4}$	5 $\frac{1}{16}$	5 $\frac{1}{16}$	f-6.3	58.00
5	4 $\frac{1}{4}$ x 6 $\frac{1}{2}$	11 $\frac{3}{16}$	8 $\frac{3}{4}$	5	f-7	63.00
6	4 $\frac{1}{4}$ x 6 $\frac{1}{2}$	13 $\frac{3}{4}$	8 $\frac{3}{4}$	6	f-7.7	70.00
7	4 $\frac{1}{2}$ x 7 $\frac{1}{4}$	11 $\frac{3}{16}$	11 $\frac{3}{16}$	6 $\frac{3}{8}$	f-6.3	68.00
8	5 x 7 $\frac{1}{2}$	13 $\frac{3}{4}$	11 $\frac{3}{16}$	7	f-7	75.00
9	5 x 8 $\frac{1}{2}$	16	11 $\frac{3}{16}$	7 $\frac{1}{2}$	f-7.7	87.50
10	5 x 8 $\frac{1}{2}$	13 $\frac{3}{4}$	13 $\frac{3}{4}$	7 $\frac{7}{8}$	f-6.3	82.00
11	6 $\frac{1}{2}$ x 8 $\frac{1}{2}$	16	13 $\frac{3}{4}$	8 $\frac{1}{8}$	f-7	94.50
12	6 $\frac{1}{2}$ x 8 $\frac{1}{2}$	18 $\frac{3}{4}$	13 $\frac{3}{4}$	9 $\frac{1}{4}$	f-7.7	115.50
13	6 $\frac{1}{2}$ x 8 $\frac{1}{2}$	16	16	9 $\frac{1}{4}$	f-6.3	106.50

BAUSCH & LOMB PLASTIGMAT f-6.8

The Plastigmat is a Symmetrical Lens, the front and back combinations being composed of four lenses each. The separate systems show great covering power. The rear combination can be used at a speed of f-13.5, one-half as great as the ordinary Rectilinear.

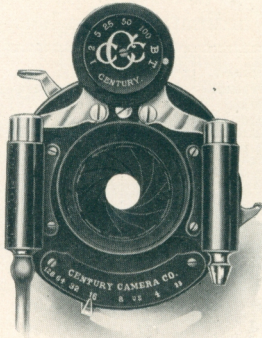
No.	Diameter of Lens	Equivalent Focus of Doublet	Size of Plate	Price	
			F-6.8	Plastigmat Only	Fitted with Aluminum Volute Shutter
1	7 $\frac{7}{8}$	5 $\frac{1}{4}$	3 $\frac{1}{4}$ x 4 $\frac{1}{4}$	\$ 34.00	\$ 51.00
2	1 $\frac{1}{16}$	6 $\frac{1}{4}$	4 x 5	40.00	57.00
3	1 $\frac{3}{32}$	7 $\frac{1}{4}$	5 x 7	48.00	65.00
4	1 $\frac{1}{8}$	8 $\frac{1}{4}$	5 x 8	55.00	73.50
5	1 $\frac{3}{8}$	11	6 $\frac{1}{2}$ x 8 $\frac{1}{2}$	75.00	93.50

COOKE SERIES III f-6.5

No.	Equivalent Focus	With Full Apertures to Cover Plates	With Iris Diaphragm and Standard Flange
1	3	2 $\frac{1}{4}$ x 2 $\frac{1}{4}$	\$ 27.50
2	4 $\frac{1}{4}$	3 $\frac{1}{4}$ x 3 $\frac{1}{4}$	32.00
3	5	3 $\frac{1}{4}$ x 4 $\frac{1}{4}$	35.00
4	6	4 x 5	39.50
5	7 $\frac{1}{2}$	5 x 7	48.50
6	8 $\frac{1}{4}$	5 x 8	53.00
7	11	6 $\frac{1}{2}$ x 8 $\frac{1}{2}$	91.00
8	13	8 x 10	130.00

Century Shutters

Century Shutters are made especially for Century Cameras, and are exclusive in design. They are beautifully finished, the bodies being a rich black with nickel fittings.

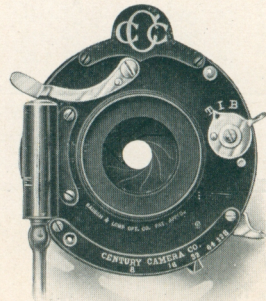


No. 1 Century Automatic Shutter

It is a fact worthy of consideration, that all screws, levers, cases and other working parts are measured, gauged and tested. The pneumatic retarding pistons upon which the accuracy of the various automatic exposures depends, are ground and fitted by hand, and carefully tested to a uniform standard. Even such minute details as the heads of screws used to hold the parts together, receive individual attention, each screw being placed in a lathe and polished by hand with several grades of specially prepared polishing materials. The axis upon which leaves of the iris diaphragm move is accurately turned and carefully riveted in place by hand. The actuating springs, made of the finest tempered steel wire, are coiled by hand, securing the utmost uniformity and elasticity.

The Focusing Lever applied to all regular Century Shutters throws back the shutter leaves to permit focusing on the ground glass screen. With other iris diaphragm shutters it is necessary to set the dial for "time" exposures—then press the bulb or trigger to open the lens. All setting and pressing is dispensed with in the Century Shutters, as it matters not how the indicator stands, when you wish to focus, simply adjust the focusing lever at the side. The shutter leaves will part—giving full aperture of the lens.

All Century Shutters have triplicate movement—operating for instantaneous, time and bulb exposures. The various speeds in fractional parts of seconds are governed by an indicator and dial at the top, (excepting the No. 3 Automatic) while the iris diaphragms are regulated by a lever at the bottom of

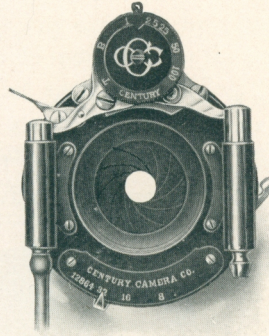


No. 3 Century Automatic Shutter

the shutter. The various apertures are marked on a scale in accordance with the U. S. system. The first cut on page 40 shows our new No. 1 Automatic Double Valve Shutter.

The mechanism is so arranged that after an exposure is completed the shutter automatically sets itself for the next picture. There can never be a question as to "whether the shutter is set" as it is ready at all times, being released and set simultaneously by either the finger or the bulb.

The shutter blades are manufactured of a special material not affected by variation in temperature, and are shaped so as to give the most even illumination.



No. 4 Century Regular Double Valve Shutter

The No. 3 Automatic Shutter, shown at the bottom of the preceding page, is the neatest and best moderate-priced shutter on the market. It gives three different exposures, viz.: time, bulb and instantaneous. By moving an indicator at the top, the speed is quickly adjusted.

The No. 4 Regular Double Valve Shutter is one of the best types for general use yet devised. The ease of adjustment, perfect working of all parts, compactness and attractive design are noticeable features. The shutter is set by a lever at the top. Back of the shutter blades, which are shaped to give as even an illumination as possible, there is an iris diaphragm, operated by an index lever at the bottom.

On a dial at the top, the various degrees of speed are indicated in fractional parts of seconds and exposures of different lengths are secured by simply turning a milled head to the right or left. The speeds are controlled by a patent pneumatic device.

PRICE LIST OF CENTURY SHUTTERS

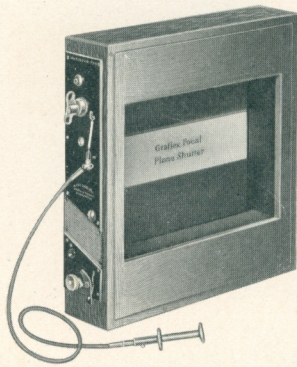
	3½ x 4¼	4 x 5	5 x 7	6½ x 8½	8 x 10
No. 1 Century Automatic Shutter	\$ 10.00	\$ 10.00	\$ 10.00	\$ 12.00	\$ 14.00
No. 3 Century Automatic Shutter	4.00	4.00			
No. 4 Century Regular Shutter	6.00	6.00	6.00	8.00	10.00



Graflex Focal Plane Shutter

PATENT ALLOWED

THE SCOPE OF A For ultra rapid photography, the Graflex
GRAFLEX SHUTTER Shutter presents numerous advantages
over those working in front of, between or behind the lens. To
secure successful negatives of rapidly moving objects, such as horse



and automobile races, railroad trains, foot-ball games, base-ball contests, etc., there is no style of shutter that can equal the Graflex. And while constructed primarily for high-speed work, it is also adapted for slow automatic exposures and time exposures of any duration. Its position immediately in front of the sensitive plate or film insures the distribution of light with equal intensity upon every portion of the sensitized surface. In addition, the principle upon which it is constructed

not only gives the maximum in speed, but at the same time the plate receives a greater volume of light in a given time than with any other type of shutter.

THE ADVANTAGES In comparing the Focal Plane Shutter with the between-lens type of shutter, which is most commonly in use, particular stress should be laid upon the fact that with the Focal Plane Shutter there is absolutely no diminishing of the volume of light passing through the lens, in other words the full efficiency of the aperture used is maintained during exposure. With the between-lens type of shutter there is only a fraction of the exposure given with the working aperture of the lens, varying from that down to the pinhole. It therefore follows that with the between-lens type of shutter high-speed exposures would be ineffective, owing to the method of lighting.

OPERATION AND CONSTRUCTION By simply turning a small key the speed can be varied from "time" to $\frac{1}{1000}$ part of a second. The maximum speed of an ordinary shutter placed at the diaphragm of a lens does not exceed $\frac{1}{100}$ of a second and many

shutters of this class do not give shorter exposures than $\frac{1}{50}$ of a second.

The Graflex Shutter is instantly set for any exposure by a *half-turn* of the winding key. Dials on the outside indicate both the size of curtain aperture and the tension of roller spring controlling the speed.

The Curtain of the Graflex Shutter is made on an entirely new principle—in one long piece, with apertures ranging from full opening to $\frac{1}{8}$ of an inch. This insures an absolutely uniform aperture



for the admission of light, and not a wedge-shaped opening, as is so often the case with shutters having a double adjustable curtain.

The Graflex Shutter is as easy to operate as an ordinary shutter and can be adapted to all makes of folding plate cameras. Graflex Focal Plane Shutters for Century Cameras are fitted to the Century without extra charge, but when ordered for other cameras we add cost of adapting.

THE ANASTIGMAT AND FOCAL PLANE SHUTTER Realizing that the full possibilities of the Anastigmat lens cannot be secured with the ordinary type of shutter, Century Special Outfits are now listed in connection with the Graflex Focal Plane Shutter. A good camera and a good lens should have a good shutter, and a Century Special with one of these shutters leaves very little to be desired. For prices of these outfits see page 26.

SPECIFICATIONS

	4 x 5	5 x 7	6½ x 8½	8 x 10
Dimensions	6¼ x 6¼ x 2	8¼ x 8¼ x 2	9¾ x 9¾ x 2⅞	11⅝ x 11⅝ x 2⅝
Weight	15 oz.	22 oz.	26 oz.	32 oz.

PRICE

	4 x 5	5 x 7	6½ x 8½	8 x 10
Graflex Focal Plane Shutter	\$ 22.00	\$ 24.00	\$ 27.00	\$ 31.00



Century Plate Holders

It is obvious that perfect pictures cannot be obtained from fogged plates. Fog results, many times, from the use of defective holders, which are faulty in design and construction. We can guarantee successful results only when Century Holders are used in Century Cameras. Century Plate Holders are made throughout of hard wood, all joints dovetailed and fitted with our light-excluding shutter—a perfect device—which prevents light passing through the narrow opening when the slide is withdrawn. They are compact, light and easy to load, and the plate can be inserted or removed without touching the sensitive surface. The holder is designed so as to allow the exposure of the full width of the plate.

To fill the holder it is only necessary to rest the plate on a wooden ledge or bar at one end, press the bar down and the plate falls in place.

All Century Holders are fitted with special black press-board slides—experience having demonstrated their superiority over hard rubber. We use a material for slides made to our order especially for Century Holders. It is cut and coated in our own factory. Century Holder Slides

Will not Electrify and Cause Fog;
Will not Collect Dust;
Will not Crack or Split;—

These conditions it is impossible to avoid with hard rubber.

PRICE					
3¼ x 4¼, each	\$ 1.00	5 x 7, each	\$ 1.25	8 x 10 each	\$ 2.00
4 x 5, “	1.00	6½ x 8½, “	1.75	11 x 14, “	4.50

Daylight Roll Holders for Cartridge Film

The Roll Holder is about the size of three double plate holders, and will hold Film Cartridges of twelve exposures. By means of a Cartridge Roll Holder those desiring to avail themselves of the advantages of film may do so at small outlay, as the Roll Holder is adaptable to all Centurys except Petite No. 1.

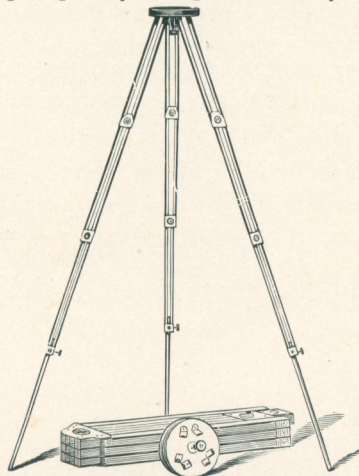
The Cartridge Holder loads in daylight and is interchangeable with regular plate holders in the field.

	PRICE		
Cartridge Roll Holder fitted to Century Camera	3¼ x 4¼	4 x 5	5 x 7
	\$ 5.00	\$ 5.00	\$ 6.50

The Crown Tripod

PATENTED JUNE 23, 1903.

The Crown is a four-section telescopic folding tripod, absolutely rigid, quickly set up and readily adjusted for height.



It is made of selected straight-grained cherry, soaked in an oil bath for ten days before being finished. The wood is then rubbed down and schellaced. This treatment renders it extremely tough and practically waterproof.

For carrying, the lower sections telescope into the third and the upper section folds back upon it, making it very compact. All binding screws on lower sections of this tripod are "upset" and cannot be lost.

Taper pins in the ear pieces of the head fit snugly into metal-tipped sockets of the legs, preventing loose joints and side play.

Expansion brackets in the upper section make it impossible for the legs to be detached from the head until brackets are folded.

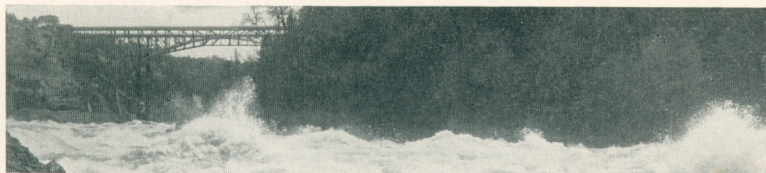
The No. 1 when closed measures $16\frac{1}{4}$ inches and weighs with top, 36 ounces. When extended to its full capacity, it stands $4\frac{1}{3}$ feet high.

The No. 2 closed measures $17\frac{1}{4}$ inches and weighs with top, 65 ounces. When extended, it has a height of $4\frac{2}{3}$ feet.

The No. 3 closed measures 20 inches and weighs with top, 70 ounces. When extended, it has a height of $5\frac{1}{2}$ feet.

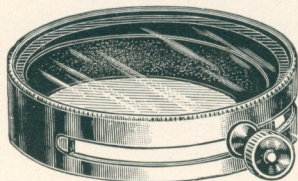
PRICE

No. 1 Crown Tripod, with 4-inch top	\$ 5.50
No. 2 Crown Tripod, with 6-inch top	6.00
No. 3 Crown Tripod, with 6-inch top	7.50



The Century Color Screen

The Century Color Screen is made from two pieces of selected optical glass, between which is a stained balsam, spectroscopically tested to give the best rendering of color values.



They are fitted in a polished and lacquered brass mount with an adjustable clamp ring, which permits the screen to be used on a number of lenses.

In ordering give exact diameter of lens hood.

PRICE

No. 1, 1½ inches in diameter	\$ 2.25
No. 2, 2 inches in diameter	2.75
No. 3, 3 inches in diameter	3.25

Carrying Cases

Century Cases are made of the best sole leather with solid corners—not stitched. The camera is carried in one end and extra plate holders in the other. Cases for Model 47 and all Grand Cameras are plush-lined.

View Camera Cases, as listed below, are oblong. They are covered with canvas, lined with cloth and have two compartments. One for camera and the other for holders.

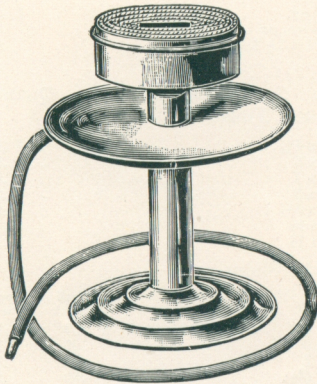
Style Camera	3¼ x 4¼	4 x 5	5 x 7	6½ x 8½
Century Models 39 and 40, Keratol	\$ 1.50	\$ 1.50	\$ 2.25	
Century Models 41, 43, 46	3.50	4.00	5.00	\$ 6.50
Century Model 47		5.00	6.00	8.00
Century Grand and Grand Senior		5.00	6.00	8 90
Petite Centurys	2.25	2.50	Shoulder Straps 56-inch, 30c.; 66-inch, 40c.; 70-inch, 55c.	
Petite Centurys velvet-lined	3.00	3.50		

CANVAS COVERED CASES FOR VIEW CAMERAS

	5 x 7	6½ x 8½	8 x 10	11 x 14
Century View No. 1 and No. 2	\$ 2.00	\$ 2.25	\$ 2.50	\$ 3.50
If made to hold tripod, extra75	.75	.75	
Lock and key, extra75	.75	.75	1.00

Crown Flash Lamp

FOR PURE MAGNESIUM ONLY



The Crown Flash Lamp is so constructed that the magnesium powder is stored in the body of the lamp and blown up through the center of flame, thoroughly consuming it and producing a powerful light. The head of lamp is filled with lamp-wick, saturated with alcohol. This gives a large flame, which is very essential in a perfect flash lamp.

The head of lamp is removable in order to fill the magazine with magnesium powder. A safety disc is provided, to protect the hand when using the lamp. Tube and mouth pieces are all furnished.

The double spreader will not clog up and is more powerful than any other lamp of double its cost now on the market. Long or short flashes can be made.

The Crown is the perfection of flash lamps, being safe, economical and reliable. It is finished in polished nickel and presents a very handsome appearance.

Price \$ 1.50

Century Portrait Attachment

For making large portraits with short bellows cameras—like Models 40, 41 and 43. We can furnish this attachment for all makes of cameras.

PRICE

4x5, \$1.50 5x7, \$1.50 6½x8½, \$2.00 8x10, \$3.00

Books for the Amateur

“The Modern Way in Picture Making.” The most practical book for the beginner ever published. Printed on heavy coated paper.

Beautifully illustrated. Nearly 200 pages, Cloth Bound \$ 1.00
 “Home Portraiture,” by Frank Morris Steadman, an illustrated book to guide the amateur in portrait work, leather cover75

Miscellaneous

Tripods, Century Compact, Three Fold

No. 1	Price
No. 2½	\$ 1.70
No. 3	3.00
No. 4	3.50
	4.50

Tripod Screws

For Leg	Price
For Top, up to 11 x 14	\$.25
For 11 x 14 Top	.30
	.40

Inside Kits (To Fit any Holder)

4 x 5 any opening	\$.20
5 x 7 " "	.25
6½ x 8½ " "	.30
8 x 10 " "	.35

Lens Boards

For Centurys up to 5 x 7	\$.35
For Centurys above 5 x 7	.50
For Stereo Century	.50
For View Cameras up to 8 x 10	.50
For Century View, 11 x 14	.70

When ordering lens boards for View Cameras, specify whether for No. 1 or No. 2.

Bellows

4 x 5 Century Models 40, 41 and Petites Nos. 1 and 2	\$ 2.00
5 x 7 Century Models 40 and 41	2.50
4 x 5 Century Models 43, 46, 47, and Grand Cameras	3.00
5 x 7 Century Models 43, 46, 47, and Grand Cameras	4.00
5 x 7 Century View, No. 1	4.00
6½ x 8½ Century View, No. 1 or 2	5.00
8 x 10 Century View, No. 1 or 2	6.00
11 x 14 Century View	8.00

Fine Ground Glass, Extra Quality Satin Finish

3¼ x 4¼	\$.12
4 x 5	.15
5 x 7	.18
5 x 8	.20
6½ x 8½	.20
8 x 10	.30
11 x 14	.50

Holder Slides

	Hard Rubber	Press Board
3¼ x 4¼	\$.20	\$.10
4 x 5	.25	.15
5 x 7	.35	.20
6½ x 8½	.50	.25
8 x 10	.65	.35
11 x 14	1.00	.50

Reversible Backs

For 5 x 7 View Cameras	\$ 7.50
For 6½ x 8½ " "	9.00
For 8 x 10 " "	11.00
For 11 x 14 " "	14.00

Our Terms

All quotations are f. o. b. Rochester. We make no charge for packing, and guarantee safe arrival of goods when forwarded by express. Shipments by mail are always at the risk of purchaser, and postage must invariably be added to the cost.

We prefer that remittance be made by Draft on New York, Post-Office or Express Money Order or Registered Letter. Personal checks, when from parties unknown to us, unless certified by the bank on which they are drawn, will delay shipment of goods until check can be collected. Ten cents must be added to all personal checks to cover cost of exchange.

For the convenience of our customers, we suggest they purchase through a regular dealer in photographic goods, thus saving time and express charges.

CENTURY CAMERA CO.,
Rochester, N. Y.

Century
Camera
Company.

ROCHESTER, N.Y.

R. D. HAMILTON, Ph. G.

PRESCRIPTION DRUGGIST,

KODAKS. CAMERAS. SUPPLIES.

322 SOUTH MARKET ST.

1st Door South McKinley Hotel.

Stark Phone 346

Bell Phone 161

CANTON, OHIO.