



MINIATURE

EQUIPMENT

BY EASTMAN



FOR THE MINIATURE ENTHUSIAST

EASTMAN offers in this book a complete line of equipment for today's miniature photography. First you have the choice of a well-rounded group of miniature Kodaks, all built to precision standards, at a broad range of prices. From the inexpensive Bantams to Kodak Ektra, the world's most distinguished camera, these miniature Kodaks are designed to give brilliant performance in both color and black-and-white photography.

Eight Kodak Films are spooled for these miniature cameras, each with special characteristics that put it a dramatic step ahead in its particular field. Outstanding is Kodachrome Film which, with a Kodaslide Projector, opens up the new thrill of full-color projection to miniature camera owners.

A variety of accessories is available to extend the scope of creative miniature photography. For amateurs who do their own enlarging, there are three new Kodak Enlargers. Additional Kodak darkroom supplies are offered to meet the exacting requirements of miniature darkroom technique.

Each item of this line is designed as a part of an integrated system for miniature photography. Each has been tested by the research and production facilities of the world's largest manufacturer of photographic materials. To all miniature enthusiasts, then, here are the means for better pictures—through Miniature Equipment by Eastman.

EASTMAN KODAK COMPANY, Rochester, N. Y.

*Made with a Kodak Ektra. 1/500 second,
f/3.5, K-2 filter, on Kodak Plus-X Film.*



Cameras

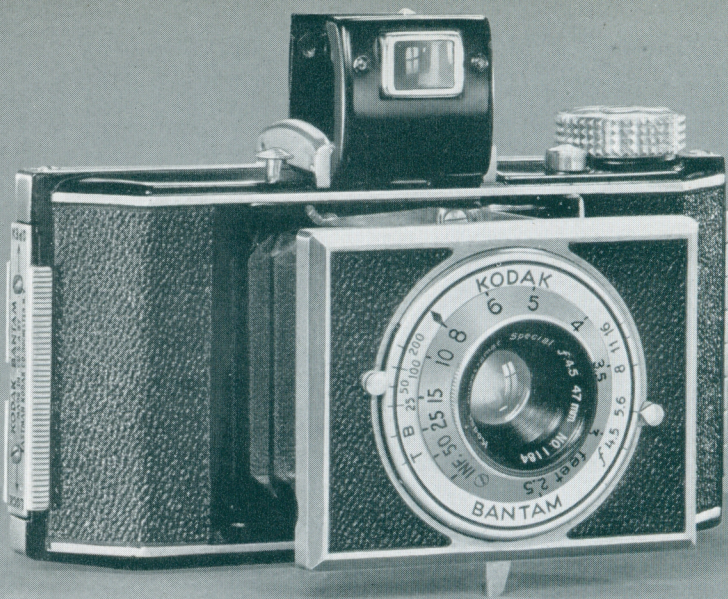
Films

Accessories

Enlargers

Darkroom

Supplies



KODAK BANTAMS $f/4.5$

THE trim, smart Kodak Bantams $f/4.5$ and $f/5.6$, in spite of unusually small size and moderate price, are truly fine miniatures. Noteworthy for dependable performance in making full-color Kodachrome transparencies, they also get crisp black-and-white negatives which enlarge beautifully.

These tiny Kodaks, through modern photofinishing methods, give you big, $2\frac{3}{4}$ x 4-inch, album-size prints at moderate cost. Kodak Bantams use the inexpensive 8-exposure Kodak Film rolls. Equipped with Kodak Anastigmat Special lens and a $1/200$ -second shutter, Kodak Bantam $f/4.5$ (above) can cope with unusual picture situations. It has a button-actuated, "pop-out" front which closes quickly and easily... focusing $2\frac{1}{2}$ feet to infinity... body shutter release... folding optical eye-level

finder . . . hinged back with positive lock . . . safety catch to prevent accidental winding of film.

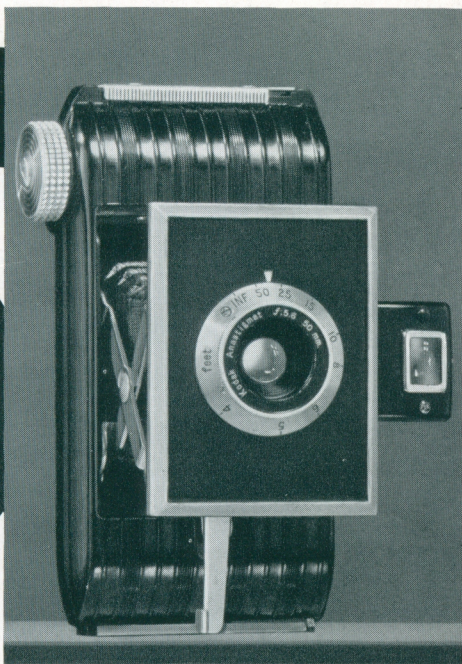
Kodak Bantam *f/5.6* (below) has Kodak Anastigmat lens . . . 1/100 shutter . . . folding optical finder . . . focusing from four feet to infinity . . . body of black molded material. Series V, $\frac{15}{16}$ -inch Lens Attachments fit both models. (See page 14.)

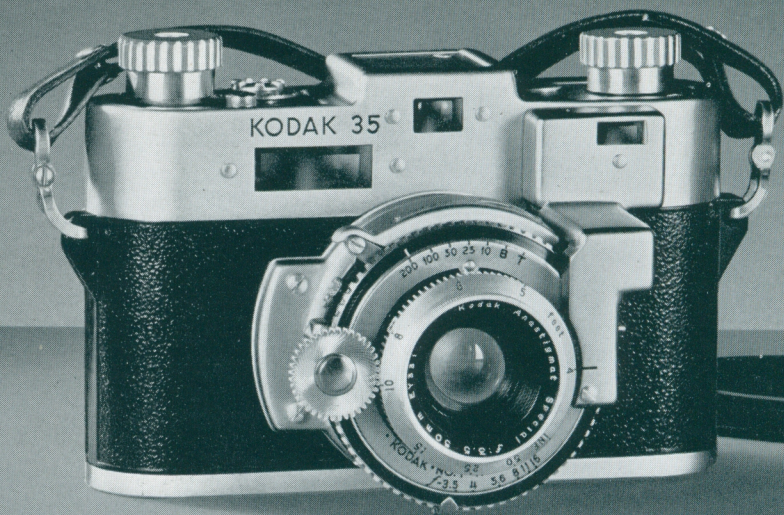
PRICES

Kodak Bantam, with Kodak Anastigmat Special <i>f/4.5</i> lens and 1/200 shutter . . .	\$22.50	Kodak Panatomic Film (No. 828, 8 exp.)	\$.20
Field Case with strap for Kodak Bantam <i>f/4.5</i>	4.25	Kodak Plus-X, Panatomic-X, Super-XX, Infra-Red (No. 828, 8 exp.)25
Kodak Bantam, with Kodak Anastigmat <i>f/5.6</i> lens and 1/100 shutter	14.00	Kodak Direct Positive (No. 828, 8 exp.)35
Field Case for Kodak Bantam <i>f/5.6</i>	3.25	Kodachrome Film No. 828 (K828A for Photoflood or Photoflash), 8 exp.	1.35

5

AND *f/5.6*





KODAK 35'S • $f/3.5$,

ALL the Kodak 35's represent high values in cameras of the 35-mm. type. Precision-built, with fast lenses and accurate shutters. For fine black-and-white negatives or handsome, full-color Kodachrome transparencies.

Kodak 35's are equipped with automatically controlled exposure counter . . . optical eye-level finder . . . sturdy neck-strap supports. The $f/3.5$ and $f/4.5$ models have self-setting shutter . . . double-exposure prevention device . . . bracket for attaching Kodak Pocket Range Finder . . . built-in self timer. Kodak 35, $f/3.5$, with Range Finder adds the exceptional focusing accuracy of the coupled, split-field, military-type range finder. Series VI, $1\frac{1}{4}$ -inch Lens Attachments fit both $f/3.5$ and $f/4.5$ models. Series VI, $1\frac{5}{16}$ -inch, for $f/5.6$ model. (See page 14.)

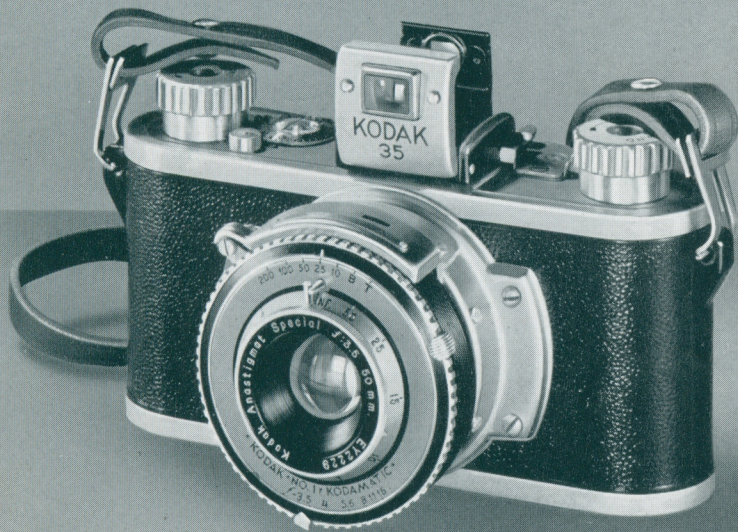
PRICES

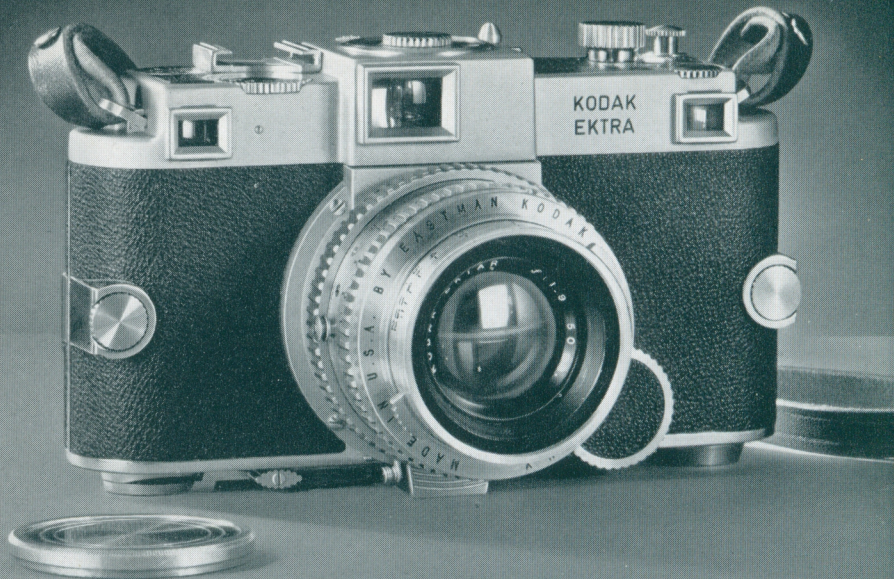
Kodak 35 with Range Finder, Kodak Anastigmat Special <i>f</i> /3.5 lens and 1/200 Kodamatic shutter	\$47.50	Kodak Plus-X, Panatomic-X, Super-XX (No. 135, 18 exp.)	\$.60
Kodak 35, with Kodak Anastigmat Special <i>f</i> /3.5 lens and 1/200 Kodamatic shutter	33.50	Kodak Infra-Red (No. 135, 36 exp.)	1.20
Kodak 35, with Kodak Anastigmat <i>f</i> /4.5 lens and 1/150 Diomatic shutter	24.50	Kodak Direct Positive (No. 135, 36 exp.)	1.25
Kodak 35, with Kodak Anastigmat <i>f</i> /5.6 lens and 1/100 Kodex shutter	14.50	Kodachrome Film No. K135 or K135A, 18 exp.—including processing	2.50
Field Case for Kodak 35 with Range Finder	7.00		
Field Case for <i>f</i> /3.5, <i>f</i> /4.5, and <i>f</i> /5.6 models	4.50		
Kodak Plus-X, Panatomic-X, Super-XX (No. 135, 36 exp.)95		

7



f/4.5, *f*/5.6





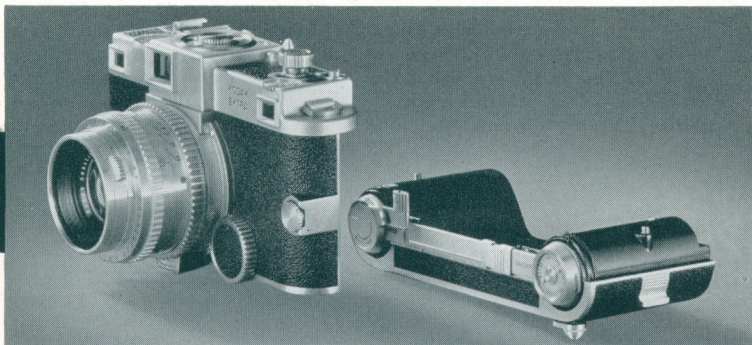
KODAK EKTRA

KODAK EKTRA, the world's most distinguished camera, represents the ultimate in miniature camera engineering and manufacture. Designed to exploit the full possibilities of modern photographic materials and technique, the Ektra includes features and refinements as an integral part of its construction never before available in a 35-mm. camera.

Six Kodak Ektar lenses in various focal lengths are now available for the Ektra. Their design embodies to a high degree all the corrections essential to precision miniature photography. The lens mounts are so made as to provide rapid interchangeability and positive coupling with the range finder system.

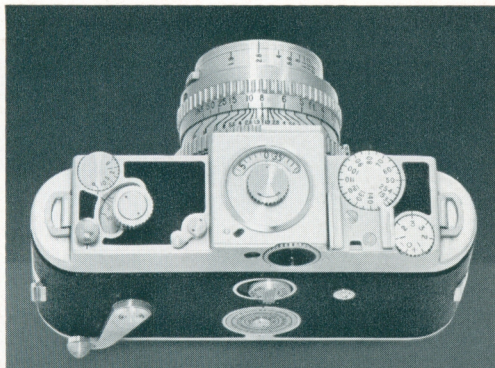
A variable-power view finder, built into the camera, can be quickly adapted to the field angle of any of the lenses, and pro-

vides complete correction for parallax within the normal focusing range. Incorporated in the view finder is a milled ring which adjusts the eyepiece to accommodate individual vision. All of the lenses work automatically with the military-type, coupled range finder. Its design is based on the well-known split-field principle which permits accurate focusing in almost any light. A separate range finder eyepiece is employed to obtain a magnified image, and, by turning a simple control dial on the camera top, the user can quickly adjust the range finder to his individual vision. These features combine to produce the most accurate automatic focusing available on any camera.



With Ektra's magazine backs, you can change quickly from one film type to another between exposures. Any number of extra magazine backs may be purchased separately. An exclusive Ektra feature.

Convenience and ease of manipulation have been carefully worked out in the design of Kodak Ektra. All control dials and scales can be read at a glance from the top of the camera. The main operating controls are grouped for quick, easy manipulation with the finger tips of one hand, leaving the other hand free for a firm grip on the camera.



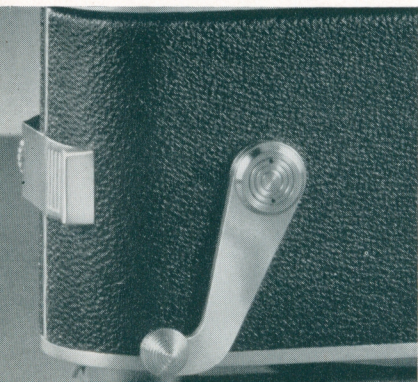


Six superb Kodak Ektars, surface-treated by a process which assures maximum brilliance and shadow detail in negatives. From left: 35-mm. $f/3.3$, 50-mm. $f/3.5$, 50-mm. $f/1.9$, 90-mm. $f/3.5$, 135-mm. $f/3.8$, 153-mm. $f/4.5$.

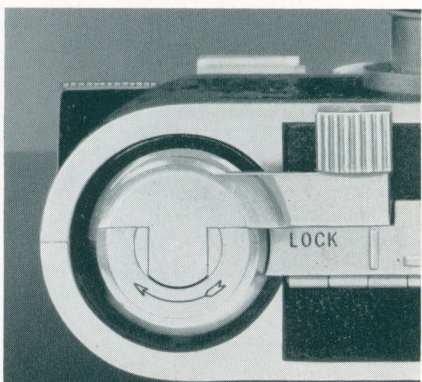
Precision exposure at every speed is provided by the Ektra focal-plane shutter. It is of the pre-set, variable-slit type with ten speeds from 1 second to 1/1000 second, plus "bulb." A delayed action release mechanism is built in. The shutter is wound automatically when the film is advanced, thus providing positive protection against double exposures.

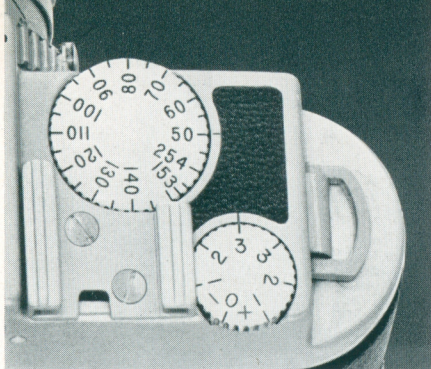
Interchangeable magazine backs enable the Ektra owner to change without waste from one film type to another between exposures . . . an advance offered by no other miniature camera. Together with the interchangeable lenses, these extra backs place at the user's disposal not only an extremely wide picture-

Rapid film-advance, shutter-set lever on each magazine back. Two short swings advance film and set shutter.



Rapid rewind crank on each magazine back. When not in use, the crank folds flush with the bottom of the camera.





Upper dial is lens-and-finder co-ordinating control which adapts the view finder to the field angle of different lenses. Below is range finder individual-vision adjustment.



Film type indicator on each magazine back. Dial can be set to identify film load when two or more backs are used interchangeably.

making range, but also the ability to meet any picture situation with the most suitable emulsion. Each magazine back has a hinged cover for quick, easy loading . . . film-advance, shutter-wind lever . . . film type indicator . . . film movement visible signal . . . rapid rewind crank . . . exposure counter. For complete details on this superb new camera, see the Kodak Ektra book.

PRICES

Kodak Ektra, with 50-mm. Kodak Ektar <i>f</i> /1.9 lens, one Magazine Back	\$300.00	Right Angle Finder	\$10.00
Kodak Ektra, with 50-mm. Kodak Ektar <i>f</i> /3.5 lens, one Magazine Back	235.00	Tripod Clearance Head	1.25
35-mm. Kodak Ektar <i>f</i> /3.3 lens	68.00	Kodak Combination Lens Attachments (see page 14) Series VI, No. 24, for 50-mm. Kodak Ektar <i>f</i> /1.9 lens; Series VI, No. 25, for 50-mm. Kodak Ektar <i>f</i> /3.5 lens.	
50-mm. Kodak Ektar <i>f</i> /3.5 lens	60.00	Kodak Plus-X, Panatomic-X, Super-XX (No. 135, 36 exp.)95
50-mm. Kodak Ektar <i>f</i> /1.9 lens	125.00	Kodak Plus-X, Panatomic-X, Super-XX (No. 135, 18 exp.)60
90-mm. Kodak Ektar <i>f</i> /3.5 lens	85.00	Kodak Infra-Red (No. 135, 36 exp.)	1.20
135-mm. Kodak Ektar <i>f</i> /3.8 lens	130.00	Kodak Micro-File (No. 135, 36 exp.)85
153-mm. Kodak Ektar <i>f</i> /4.5 lens	150.00	Kodak Direct Positive (No. 135, 36 exp.)	1.25
Interchangeable Magazine Back only	55.00	Kodachrome Film (No. K135 or K135A, 18 exp.)	2.50
Brown Cowhide Combination Carrying Case	15.00		
Ground-Glass Focusing Back	25.00		
High-Low Angle Finder	15.00		



I *VARIETY IS THE SPICE* of photography with Miniature Kodaks and Kodak Films. **1.** Made with a Kodak Ektra, 90-mm. lens, 1/50 at f/8 on Kodak Panatomic-X Film. **2.** Made with a Kodak Bantam, 1/25 at f/4.5 on Kodak Super-XX Film. **3.** Made with a Kodak 35, 1/50 at f/3.5 on Kodak Plus-X Film. **4.** Made with a Kodak Ektra, 1/50 at f/6.3. From a Kodachrome original. **5.** Made with a Kodak 35, 1/25 at f/4.5 on Kodak Infra-Red Film.



2



3



4



5



KODAK COMBINATION LENS ATTACHMENTS

THE Kodak Combination Lens Attachments provide a set of matched, interchangeable lens attachments for your camera. This system, providing for the use of filter disks, supplementary lenses, and lens hoods, offers maximum economy as well as flexibility. Units may be added individually, as required, and fitted into the other attachments.

The basic unit of the assembly is the *Kodak Adapter Ring*, which slips over the lens mount. (Adapter Rings for the Kodak Ektra lenses thread into the lens mounts.) This Adapter Ring serves as a mount to hold any of the other attachments in front of the lens. With a *Wratten Filter* disk inserted, it is a complete filter for your camera. With a *Supplementary Lens* disk inserted, it is a complete supplementary lens, the Adapter Ring acting as a mount. Every Kodak Adapter Ring, when purchased, comes complete with an *Adapter Ring Insert* to hold the selected disk in place. The Adapter Ring Insert is merely unscrewed, the disk placed in position in the Adapter Ring, and the Insert screwed in to hold this disk. In using a *Lens Hood*, the

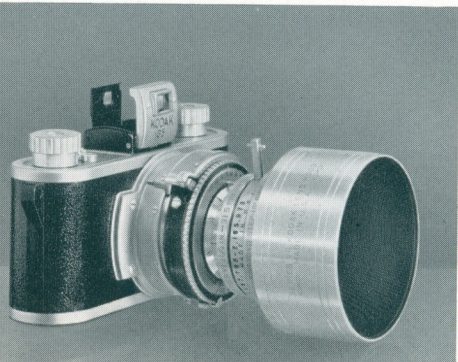
Hood takes the place of the Insert. When several optical units, such as filters, diffusion disks, and supplementary lenses, are used in combination, an auxiliary *Retaining Ring* is required.

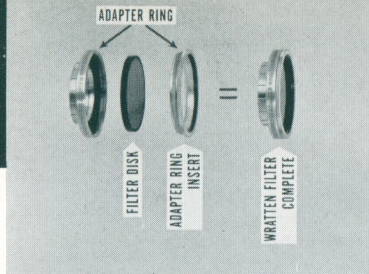
The *Pola-Screen*, which can also be used with these attachments, differs slightly from the other disks. It is mounted in its own cell with an indicator handle, and must be screwed directly into the Adapter Ring. Its cell, however, is designed to accept a Lens Hood, Filter, or any of the other Combination Lens Attachments.

This system also provides a means for the owner of two cameras to use the same attachments on both. If the Adapter Rings for the two cameras fall in two different series, a *Step-Up Ring* will enable the accessories of the larger series to be attached to the Adapter Ring of the smaller camera.

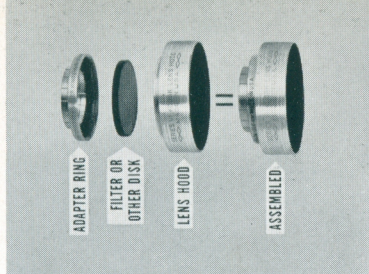
The following Wratten Filter disks in "B" glass are carried in stock for all sizes of Kodak Adapter Rings: Wratten A, B, C5, F, G, K1, K2, K3, X1, X2, No. 1, No. 2A, Aero 1, Aero 2, 23A, Kodak Sky, Kodak Color, Kodachrome Filter for Photoflood, Kodachrome Haze Filter, Type A Kodachrome Filter for Daylight. For other Filter varieties, available on special order to fit the Combination Attachments, write for Price List of Filters.

The Step-Up Ring enables the owner of two cameras to use attachments of different series interchangeably. Attachments of a larger series may be coupled to an attachment of a smaller camera. Illustrated is a Series VII Lens Hood attached to a Series VI Pola-Screen.

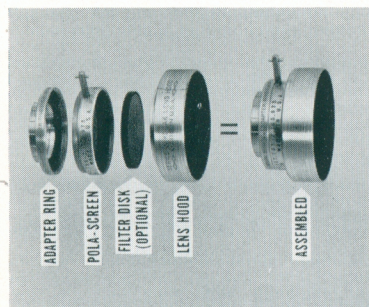




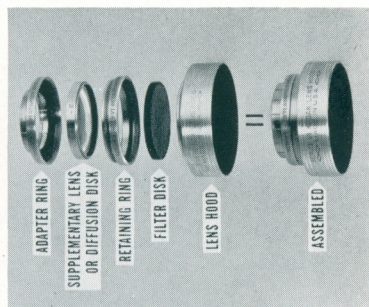
The Kodak Adapter Ring separates to accept a Wratten Filter disk. The entire assembly can be purchased to serve as a complete filter for your camera. The other attachments fit into the Adapter Ring.



Supplementary Lens disks and Diffusion Disks, as well as Filter disks, fit into the Adapter Ring for use on the camera. The Lens Hood takes the place of the Adapter Ring Insert, holding the required disk in place.



The Pola-Screen, which is mounted in a cell having an indicator handle, screws into the Adapter Ring. The Lens Hood then fits into the Pola-Screen, holding a filter disk or not, as desired.



If it is desired to use at the same time a Supplementary Lens, or Diffusion Disk with a Filter, the Retaining Ring is employed. This ring permits the use of any two of these disks together.

PRICES

	Series V	Series VI
Kodak Adapter Ring	\$.75	\$ 1.00
Wratten Filter Disk	1.45	1.75
Kodak Pictorial Diffusion Disk	3.00	4.50
Kodak Portrait Diffusion Disk	1.75	2.25
Kodak Portra Lens 1+, 2+, 3+, each	1.35	2.00
Kodak Pola Screen (In Leather Case)	10.00	11.00
Kodak Lens Hood	1.50	1.75
Kodak Retaining Ring75	.85

Kodak Step-Up Ring: Series V-VI, \$1.00; Series VI-VII \$1.50

KODACHROME SUPPLIES

KODACHROME FILM

Kodachrome Film gives you all the lovely hues of nature, the charm of colorful indoor settings. Usable at snapshot speed outdoors—or indoors, employing Type A with Photoflood or Photoflash illumination. No extra equipment required for ordinary shots; the color is in the film. Kodachrome transparencies may be viewed as they are, or projected in Kodalide Projectors.

MOUNTING SERVICE

All miniature (24 x 36-mm. and 28 x 40-mm.) Kodachrome transparencies processed in the U. S. A. are re-



Kodak Ready-Mounts (left) are 2 x 2-inch squares of smooth-finish pressboard. Die-cut openings mask the picture. Ready-Mounts may be purchased separately (right) for Kodak Bantam or 35-mm. transparencies or black-and-white film positives. Box of 50 (24 x 36 or 28 x 40 mm.), \$1.50. Kodaslide Adapting Frames (not illustrated) adapt Ready-Mounts for use in Kodalide Projector, Model A. Box of six, \$.60.

turned in the form of Kodalides, unless otherwise specified.

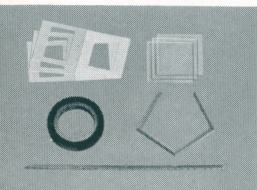
This service (no charge) includes lacquering the emulsion side of the film, cutting the frames apart, and mounting each in a smooth-finished, pressboard mount for use in Kodalide Projectors Model 1 and Model 2, or in Model A, with Adapter.

KODASLIDE FILES

The Kodalide Compartment File (below) is a box containing a removable tray made up of 10 compartments, each of which will hold 20 Kodalides or 8 2 x 2-inch glass-mounted slides. Price, \$4.50.

The Kodalide File Box is a metal box with slip-on type cover. It has a capacity of 150 Kodalides. Price, \$8.5.

The Kodalide Sequence File is a beechwood box which holds 45 glass slides or 125 Kodalides. Price, \$2.



Kodak Slide Cover Glass (2" x 2"), box of 36, \$.50. Masks (2" x 2"), for 24 x 36-mm. or 28 x 40-mm. slides, box of 50, \$.35. Kodak Binding Tape (red, black, or white), 30 yds., \$.55; 10 yds., \$.20. Kodak Metal Binding, pkg. of 12, \$.75; 50, \$2.75.

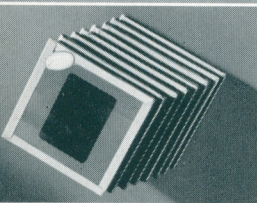
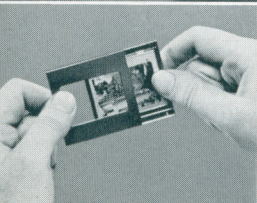
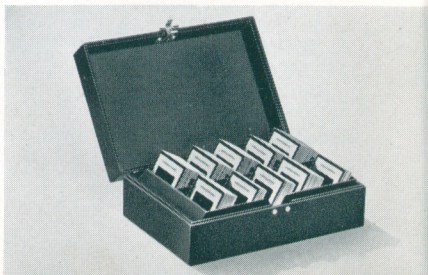


Illustration shows finished results of Kodak Slide Cover Glass, Masks, and Kodak Binding Tape on transparencies.



Many slide makers prefer Kodak Frames. Price (for 135 or 828 transparencies), box of 12, \$1.45.



KODASLIDE PROJECTOR MODEL 1

An extremely low priced but high quality projector for home viewing of miniature Kodachrome transparencies or black-and-white film positives. The new 4-inch lens and efficient optical system yield excellent 27 x 40-inch and larger images. Made of a molded material with a rich, highly polished black finish. Base measures $2\frac{7}{8} \times 5\frac{1}{4}$ inches; height, $4\frac{5}{8}$ inches. Designed to accept transparencies in the form of Kodaslides, the projector will also accommodate 2 x 2-inch glass slides.

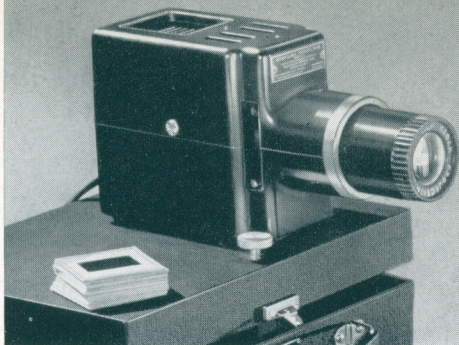
Improved illumination system with spherical glass reflector and condensing lenses. 100-watt bulb. Heat absorbing glass prevents overheating of slide being projected. Body of projector well insulated for cool operation.

Projecto Case (extra) serves as a

KODASLIDE PROJECTOR, MODEL 2

The Model 2 is a brilliant, quality-built projector for projecting 2 x 2-inch Kodachrome transparencies or black-and-white film positives (Bantam or 35-mm.) in glass slides or Kodaslides. While one slide is being viewed, the next is slipped into the slide carrier and instantly comes into position when the carrier is shifted. A knurled, metal knob provides a 10-degree tilt.

Standard equipment on the Model 2 is a precision-made 5-inch $f/3.5$ lens. Available as an accessory for longer "throws" is a $7\frac{1}{2}$ -inch $f/4.5$ lens. The rest of the optical system consists of a spherical reflector with three condensing lenses and heat-absorbing glass. Glass-wool lamp housing prevents excessive heating. Twelve-foot, rubber-covered attached cord, 100-watt, 115-volt A.C. or D.C. lamp included. A 6-volt model with battery clips is



carrying case as well as a tilting platform for use with the projector. Accessory Kodaslide Changer holds up to 50 Kodaslides and feeds them into projection position by means of a 30-inch cable release.

Kodaslide Projector, Model 1 . . . \$18.50
Projecto Case for Kodaslide

Projector, Model 1 4.00
Kodaslide Changer 12.00

available on special order. Accessory Kodaslide Changer provides magazine feed and ejection for any number of Kodaslides up to 50.

Kodaslide Projector, Model 2,
with 5-inch lens \$33.50

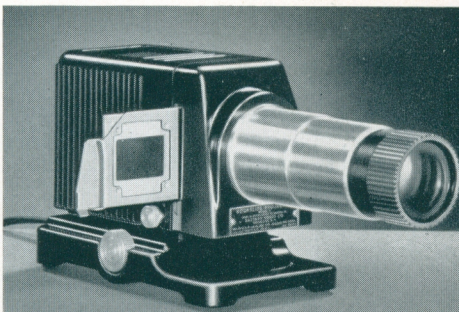
Kodaslide Projector, Model 2,
with $7\frac{1}{2}$ -inch lens 52.00

5-inch lens only 10.00

$7\frac{1}{2}$ -inch lens only 28.50

Kodaslide Changer 12.00

Carrying Case for Kodaslide
Projector, Model 2 8.00

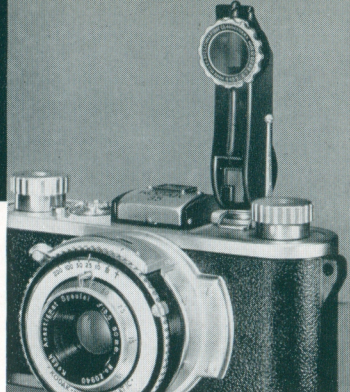


CAMERA ACCESSORIES

KODAK POCKET RANGE FINDER

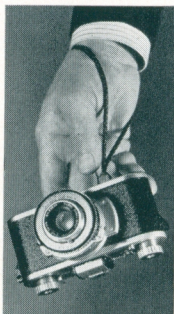
Takes the guesswork out of focusing. Look through the eyepiece, turn knurled knob until two halves of split image are lined up, and read distance on scale. Set camera for this distance and subject will be in focus.

Kodak Pocket Range Finder, \$7. Black cowhide case, \$.75.



Kodak 35 f/3.5 (illustrated) and f/4.5 carry a special bracket for the Kodak Pocket Range Finder.

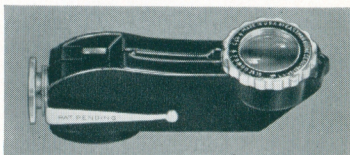
KODAK HAND STRAP



Especially useful with miniature cameras, but can be attached to any standard tripod socket. Fastens by a swivel knob, and makes it practically impossible to drop camera while in use. Price, \$.50.

Kodak Neck

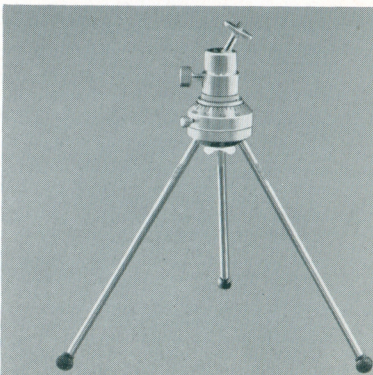
Strap for standard tripod sockets, \$.75. Shoulder Strap for Kodak Bantam f/4.5, \$1; for Kodak 35's, \$1.



Kodak Table Top Tripod . . .	\$1.75
Kodak Pan-a-pod	3.00
Kodak Tilt-a-pod	2.50
Three Units Together	7.00

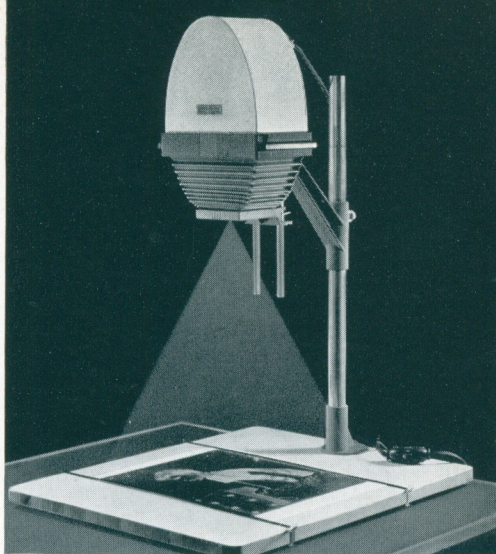
KODAK TABLE TOP TRIPOD COMBINATION

This convenient accessory is made up of three units. Each unit may be used separately or the three may be assembled to form a flexible tripod combination. Substantially constructed of duralumin.



KODAK ADVANCE ENLARGER

Here is a new, low-cost, dual-purpose enlarger. It accommodates 35-mm. and Bantam negatives as well as roll-film negatives up to $3\frac{1}{4} \times 5\frac{1}{2}$ inches (of which it enlarges a $3\frac{3}{4} \times 4\frac{1}{4}$ -inch portion). This machine is constructed of die-cast aluminum parts which assure rigidity and accuracy of definition. With its standard 4-inch, $f/11$ lens you can easily make fine enlargements up to $5\frac{1}{2}$ diameters at the baseboard. For greater magnifications, frequently desirable with miniature negatives, the 2-inch Kodak Projection Anastigmat $f/6.3$ is recommended. Prices: Kodak Advance Enlarger with 4-inch $f/11$ projection lens and baseboard, without lamp, \$27.50; Kodak Advance Enlarger without lens or lamp, \$25; Kodak 50-mm. Projection Anastigmat $f/6.3$ lens, \$7.50; Kodak Masking



Paper Board, \$15; Ruby Kodaloid Masks, each, \$.15; No. 211, 75-watt, Mazda Photo Enlarger Lamp, \$.25.

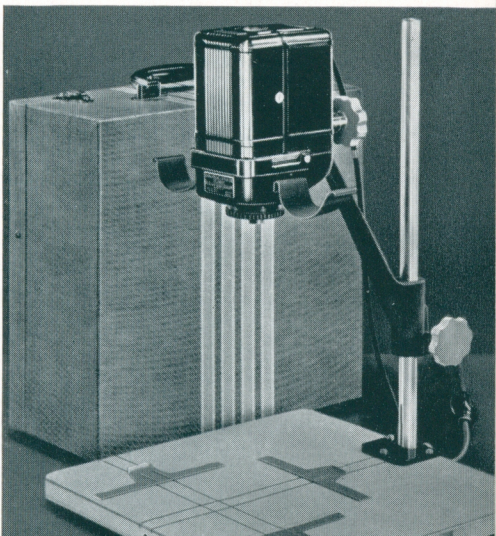
KODAK PORTABLE MINIATURE ENLARGER

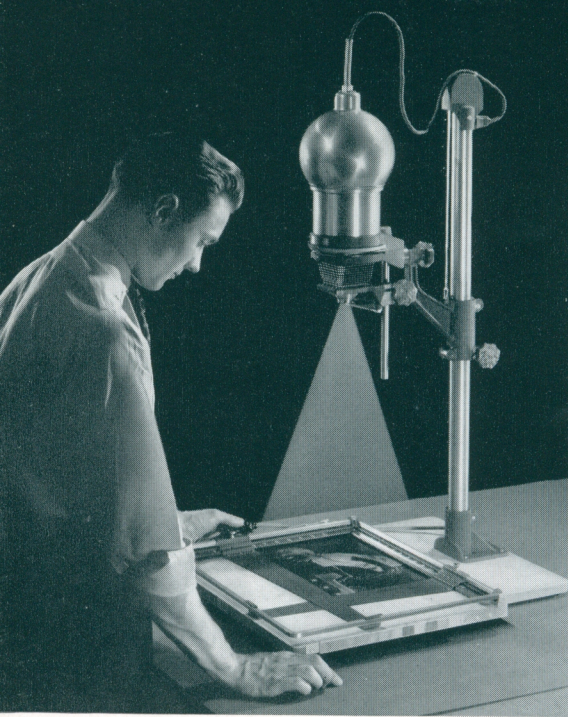
A precision instrument designed solely for enlarging from miniature negatives, this new enlarger combines efficiency and convenience with its handsome appearance. It is so constructed that it can be quickly taken down and packed in the Carryall Case, which also has separate compartments for camera, film, developers, film tank, and accessories. Enlarges up to 9 diameters at the baseboard.

PRICES

Kodak Portable Miniature Enlarger with one Glassless Negative Carrier*, No. 113, 50-watt, 115-volt Mazda Photo Enlarger Lamp, and Carryall Case—with Kodak 50-mm. Projection Anastigmat $f/6.3$ lens, \$42.50—with Kodak 2-inch Projection Anastigmat $f/4.5$ lens, \$50—with Kodak 2-inch

Projection Ektar $f/4.5$ lens, \$60.
**Specify 35-mm. or Bantam Carrier.*





NEWLY designed, with interchangeable condensers and lenses, the Kodak Precision Enlarger accommodates a range of negative sizes from 35-mm. to $2\frac{1}{4} \times 3\frac{1}{4}$ inches. With 2-inch lens, maximum magnification is 16 diameters at the paper board. More than a fine enlarger, however, this machine is the nucleus for a system of precision photographic apparatus having wide use both in the darkroom and in the actual taking of photographs. It may be quickly converted to such varied purposes as copying, ciné titling, making of color-separation negatives and matrices for color printing, and photomicrography in color or black-and-white.

DETAILS

Stand Assembly Laminated wood baseboard and chrome-plated vertical column with sliding bracket adjustable to any height. A carefully adjusted counterbalance in column assures smooth operation.

Bellows Assembly A Attaches to Stand Assembly bracket. Die-cast aluminum back frame and front board, gray bellows; front casting slides on nickel-silver shaft for focusing by friction wheel mechanism.

Condenser Head A Lighttight lamphouse holds any one of three condenser assemblies. Spherical matte-surface reflector plus condenser offers the print qual-

ity of a diffusion enlarger with the speed of a condenser enlarger.

Lenses Two groups in 2-, 3-, and 4-inch focal lengths, all with a speed of $f/4.5$. Kodak Projection Anastigmats for black-and-white photography. Kodak Projection Ektars have optimum color correction for making color-separation negatives. (The 50-mm. lenses supplied for Kodak Ektra will thread into the enlarger.)

Negative Carriers Glassless Negative Carrier A in 8 sizes from 35 mm. to $2\frac{1}{4} \times 3\frac{1}{4}$ inches. Combination Negative Carrier A, with glass, for all sizes to $2\frac{1}{4} \times 3\frac{1}{4}$ inches, is provided with a series of 8 Kodaloid Masks.

PRECISION ENLARGER

Masking Paper Board Masking frame for prints up to 11 x 14 inches. Toggle spring holds frame in raised position while paper is being put in place. Three accessory legs may be clamped to Paper Board and used to change perspective of pictures.

Other Accessories Kodachrome Transparency Holders . . . Tricolor Filter Holder . . . Diffusing Disk . . . Exposure Meter Bracket . . . Camera Back Adapter . . . Ground Glass Focusing Back . . . Copying Lights . . . Microscope Attachment . . . Tripod Adapter . . . Lantern Slide Adapter. Ask for the booklet describing this capable machine in full.

PRICES

Kodak Precision Enlarger, including Stand Assembly, Bel-

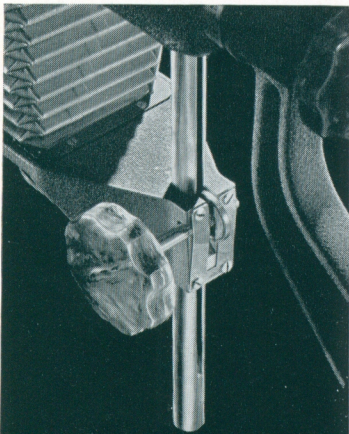
lows Assembly A, with No. 2, 3, or 4 Condenser A,* lamp, Glassless Negative Carrier A,** without lens . . .	\$67.50
Kodak Projection Anastigmat Lenses	
2-inch $f/4.5$	15.00
3-inch $f/4.5$	17.50
4-inch $f/4.5$	20.00
Kodak Projection Ektar Lenses	
2-inch $f/4.5$	25.00
3-inch $f/4.5$	30.00
4-inch $f/4.5$	35.00
Condenser A, No. 2, 3, or 4 . . .	7.50
Combination Negative Carrier A (each)	5.00
Kodak Masking Paper Board . . .	15.00
Tilting Legs (set of 3)	6.50
Lantern Slide Adapter A	5.50

*Specify whether No. 2, 3, or 4 Condenser A is wanted.

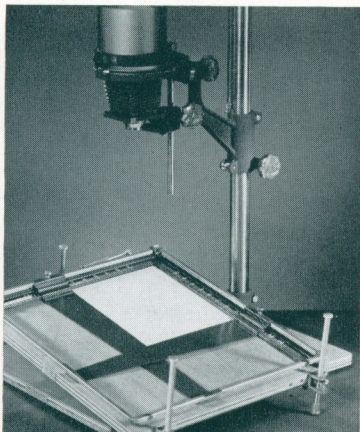
**Specify which size is wanted.

21

The carefully proportioned focusing knob and friction drive mechanism assure quick and accurate focusing.



Masking Paper Board with Tilting Legs for correcting distortion. Each leg may be adjusted individually.



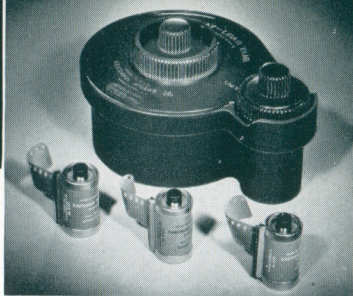
DARKROOM SUPPLIES

KODAK DAY-LOAD TANK

With the Kodak Day-Load Tank, all loading and processing steps can be followed in daylight. The tank accepts all 35-mm. films supplied in daylight-loading magazines.

Construction of corrosion-proof plastic and stainless steel assures long, useful life. Only 16 ounces of solution are required for developing.

Kodak Day-Load Tank . . . \$6.95



The Kodak Adjustable Roll Film Tank (not illustrated) accommodates four roll film widths, including Nos. 828, 135, 235, 127, 120, 620, 116, 616. After loading, all processing operations can be carried out in daylight.

Price \$5.00

KODAK TRANSPARENCY ENLARGER



For making black-and-white negatives from your miniature Kodachrome transparencies. The enlarger makes eight negatives approximately $2\frac{1}{8} \times 3\frac{1}{8}$ inches on a roll of No. 616 Kodak Film. The miniature Kodachrome, unmounted or mounted in Kodaslide or glass, is clamped before the lens. An exposure is made by placing the enlarger close to a brilliant light, such as the No. 1 Photoflood, and opening the shutter for a few seconds. A filter holder with three Wratten Color Filters and a space for a filter of the user's choice is included.

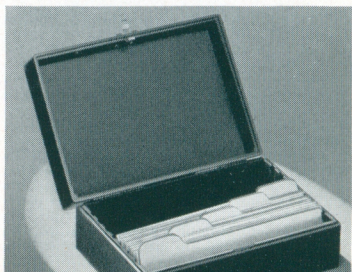
Kodak Transparency Enlarger . \$18.50

KODAK MINIFILE BOX

Your negatives and color transparencies deserve safe and convenient storage. The Kodak Minifile Box is a sturdy box of black molded material for storing miniature negatives or unmounted color transparencies in strips of four. It is equipped with 25 index cards for classification by date or subject, and the same number of guides

and transparent envelopes. Provides space for filing about 400 negatives.

Kodak Minifile Box \$4.50



FILM TANK DEVELOPERS

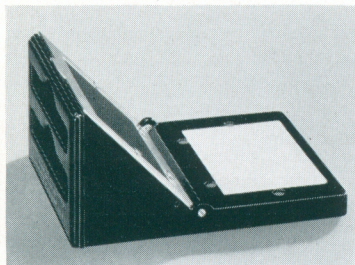
The most useful developers for tank development of Kodak Films. The Kodak Developer D-76 gives maximum shadow detail and low contrast. Negatives have good gradation throughout the whole scale, and developing time is long enough to secure uniform development.

Kodak Fine-Grain Developer DK-20 is recommended where minimum graininess is desired. DK-20 gives less loss in emulsion speed than most fine-grain developers.



Kodak Developer D-76, 1-quart size \$2.25
 Kodak Fine-Grain Developer DK-20, 1-quart size50

KODAK MINIATURE PAPER BOARD



The Kodak Miniature Paper Board, designed to stand on the baseboard of the enlarger, is used in making $2\frac{1}{4} \times 3\frac{1}{4}$ -inch album prints (each having $\frac{1}{8}$ -inch white margins) prior to selecting your "best negatives" from which to make salon enlargements. Contains two bins, one for unexposed and one for exposed papers. Bottom is covered with soft rubber to prevent slipping on enlarger baseboard.

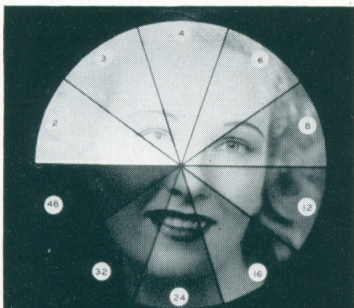
Kodak Miniature Paper Board . \$3.75

KODAK PROJECTION PRINT SCALE

This new scale affords a quick and simple method of determining the correct exposure for any enlargement at any magnification. The scale consists of a series of ten sectors, each indicating a different printing time in seconds. The enlarger is focused, and the print scale is placed on a piece of enlarging paper on the paper board. The enlarger is then turned on for 60 seconds. Upon development a ten-sector image appears, indicating graduated exposures of from 2 to 48 seconds. By inspection of this test print the best exposure is

readily determined.

Kodak Projection Print Scale . \$1.00



KODAK PROJECTION PRINT SCALE
 PLACE THE PROJECTION PRINT SCALE OVER THE SENSITIZED PAPER ON THE EASEL WITH A NEGATIVE IN THE ENLARGER. EXPOSE IN THE USUAL WAY FOR ONE MINUTE. AFTER DEVELOPMENT, THE CORRECT EXPOSURE TIME IN SECONDS MAY BE READ DIRECTLY FROM THE BEST APPEARING SECTOR ON THE ENLARGEMENT.
 MADE BY EASTMAN KODAK CO. ROCHESTER N.Y. U.S.A.

KODAK FILM



KODAK PANATOMIC-X A film with a grain of truly microscopic fineness, and speed ample for ordinary purposes. This is the film for big, brilliant enlargements without visible graininess. Fully panchromatic.

KODAK PLUS-X The all-round, standard film for miniature cameras. It combines extra speed with unusual fineness of grain. Fully panchromatic.

KODAK SUPER-XX A film of exceptional speed with grain size held to a minimum. For fast action shots at high shutter speeds... fully timed negatives under seemingly impossible light conditions... floor shows and indoor athletic events... snapshots at night. Fully panchromatic.

KODAK DIRECT POSITIVE A fine-grained, fast panchromatic film for making black-and-white transparencies directly in the camera, for standard 2 x 2-inch slide projection.

Prices in this catalog subject to change without notice.

KODACHROME Yields full-color transparencies which may be viewed as they are or projected on a screen. Kodachrome requires no extra equipment for taking. Two types: Kodachrome for Daylight and Type A for use with Photoflood light.

KODAK INFRA-RED Used with a red filter such as Wratten No. 25 (A) this film minimizes the effect of atmospheric haze and increases the photographic visibility of distant objects.

KODAK MICRO-FILE An extremely fine-grained, slow, panchromatic emulsion especially designed for making greatly reduced copies of drawings, manuscripts, photographs, newspapers, letters, etc.

KAUFMANN'S

FIFTH AVE. — PITTSBURGH, PA. — ATLANTIC 1000