



New...
H16 with
FILTER SLOT

CINE-CAMERA H8 - H16

MAIN FEATURES OF BOLEX MOTION PICTURE CAMERAS

H8-H16

- 1 Large film capacity**
Load 50 and 100 ft. spools of 16 mm film or 25, 50 and 100 ft. spools of double-eight film.
- 2 Automatic loading**
Film inserted easily and quickly ; no fiddling, no mistakes.
- 3 Range of five filming speeds**
Perfectly steady speeds of 8, 16, 24, 32 and 64 frames per second.
- 4 Forward drive**
By powerful clockwork motor or hand crank.
- 5 Reverse drive**
By hand crank, for special effects and trick films.
- 6 Revolving lens turret**
With set of three lenses, instantly rotatable.
- 7 World-famous optical equipment**
Wide choice of Kern-Paillard high-speed lenses of all focal lengths.
- 8 Octameter Viewfinder**
Adjusts to match the field covered by all lenses of focal lengths between 16 and 150 mm (H16) and 6.5 to 75 mm (H8).
- 9 Eye-Level Focus**
Provides a 10 x magnified view of subject through taking lens, ensures accurate focusing.
- 10 Parallax correction**
Ensures perfectly accurate framing of close-ups.
- 11 Footage counter**
Adds and subtracts, returns to zero automatically.
- 12 Frame counter**
Adds and subtracts, with totalising disk.
- 13 Audible counter**
Sounds warning click every 10" of film.
- 14 Frame-by-frame filming**
Takes single snapshot exposures or time exposures.
- 15 Cable release**
Avoids shaking camera, permits operation by remote control.
- 16 Provision for auxiliary motor**
Bolex H cameras can be driven by an electric motor.

Exclusive to Bolex H 16 : Filter Slot.

H8



The Bolex H8 is the only 8 mm motion picture camera on the market providing semi-professional performance. Boasting all the same features as the Bolex H16, and giving the same results, the Bolex H8 differs from its 16 mm "twin" only by the purpose for which it is intended. Specially designed for the amateur who makes movies for his own pleasure or that of his friends, it enables him to exploit the scope of economical double-run 8 mm film to the utmost, while its extra-large film capacity spells added saving.

OPTICAL EQUIPMENT : For the Bolex H8, too, there is a very full range of fast KERN-PAILLARD focusing lenses to choose from, according to needs and means, including :

Wide-angle lens

Switar 5.5 mm, f : 1.8

Normal-focus lenses

Yvar 12.5 mm, f : 2.5

Yvar 13 mm, f : 1.9

Switar 12.5 mm, f : 1.5

Telephoto lenses

Yvar 25 mm, f : 2.5

Yvar 36 mm, f : 2.8

Exclusive ! YVAR FILTIN 12.5 mm, f : 2.8.

Standard-focus lens with set of 4 filters for black-and-white and color film built into lens body. Fitted with depth of field indicator.

Kern-Paillard lenses of focal lengths 16 mm to 75 mm designed for the Bolex H16 can be used on the Bolex H8 by adding a **BAGOM Adapter Ring** (available from Bolex Agents). The Bolex H8's Octameter Viewfinder also shows the fields corresponding to these lenses.



For sportsman and reporter : Chosen to record such major feats as the conquest of Mount Everest, the Amazon-Orinoco Expedition and many other worldwide sporting "firsts".



For explorer and ethnologist : Preferred by men of action everywhere for its unfailing, proven reliability in all climates and under all circumstances.



For teacher and scientist : Accurately registers extreme close-ups and microscopic views.

Two creations of world-wide Renown

H 8 CINE-CAMERA

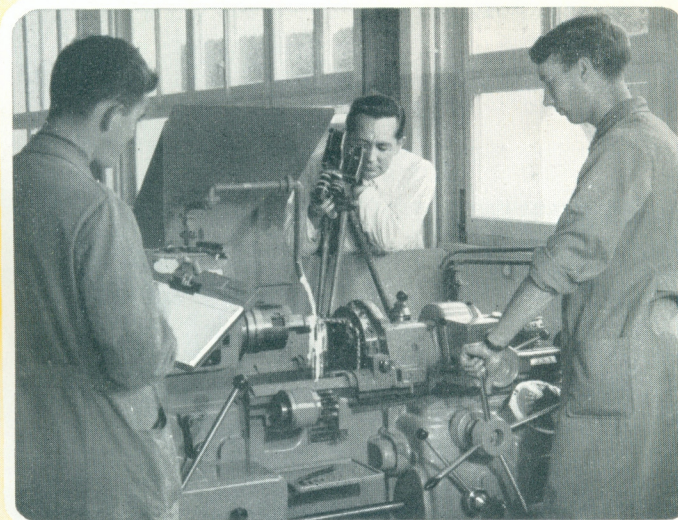
for double 8 mm film

Since their first appearance, the Paillard-Bolex cine cameras, Model H, have won throughout the world the first place amongst high class cine cameras. This world-wide reputation is simply due to the extraordinary qualities of these two twin models of cine-cameras, which offer everyone the features that he really wants. The manufacturer can make propaganda or demonstration films, he can film the work of his personnel, machines, and effect motion studies, etc. The scientist, the physician, chemist or biologist is given priceless aid by recording even the most unusual phenomena, not visible to the keenest eye, repeatable at will. Because of their faithful and reliable record, they are the ideal working instrument for the journalist, and an invaluable aid to explorers, whom they can accompany everywhere, even in the most arduous conditions.

H 16 CINE-CAMERA

for 16 mm film

They analyse and record every detail of a movement with unfailing accuracy, and thus enable athletes to examine and improve their technique. Finally, as the faithful companion of the man in the street, they enable him to recall the pleasant moments of his life, which he can re-live, together with his family and friends, far more effectively than by word-of-mouth. Paillard-Bolex cine-cameras thus offer you all the resources and all the joys of a thrilling art. Their simplicity and their ease in use bring them within the range of everyone, and will also enable you to taste all the secrets and refinements of the Seventh Art, because Model H cine cameras were designed with a definite purpose : to offer amateurs all the possibilities of the professional cinema. Gems of Swiss precision engineering, they will enchant everyone with their never failing reliability.



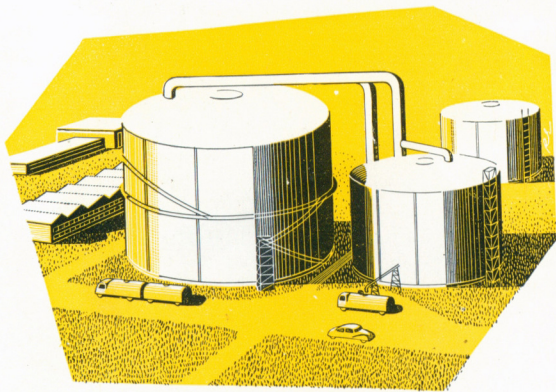
For businessman and industrialist : Invaluable for time and motion study, for propaganda work and salesman training.



For the serious amateur movie-maker : Family newsreels, holiday films and travelogues shot with a Bolex H camera are in a class by themselves.



For the professional cameraman : Widely used for shooting movies intended for television or — after enlarging to full scale (35 mm) — for the commercial screen.



Automatic loading

The Bolex H camera is **simpler and easier to load** than a still camera. The **automatic loading mechanism** makes tiresome fiddling about unnecessary... eliminates all risk of damage due to mishandling... ensures that loops are always of the correct size.

A **safety device** prevents the camera lid from being closed after loading unless all internal controls are correctly positioned. The Bolex H camera takes standard spools of all makes of black-and-white or color film, up to 100 ft. capacity. The Bolex H 16 is equipped with single-row sprockets, allowing use of film with provision for dubbing in a magnetic sound track.

Powerful motor

Winding the Bolex H camera's sturdy motor spring requires no effort... the handy extensible crank provides adequate purchase. A single winding lasts for several average-length scenes (680 frames for the H 16 and 800 frames for the H 8), no matter what filming speeds are used. This **ample running reserve** means that even if you've just finished a "take", you still have enough power left to catch those sudden, spur-of-the-moment shots.

The high torque of the motor ensures instant starting, while the rate of film feed is stabilized at all filming speeds by a powerful, effective governor, which ensures perfect registration of the image on the film and prevents under- or overexposure. Absolute reliability and regularity of operation, combined with precision-instrument accuracy, make the Bolex H camera ideal for delicate analytical work such as time and motion study, recording laboratory experiments and other scientific applications.

Footage and frame counters

The Bolex H camera is equipped with accurate **frame and footage counters** (adding and subtracting), both of which show the precise amount of film exposed. The frame counter, is of great assistance in scientific research, where great precision is required, and for producing special effects, such as in trick films. It is indispensable for replacing partly-exposed films. An **audible counter** — highly appreciated by all Bolex H camera owners — sounds a warning "click" for every ten inches of film exposed.



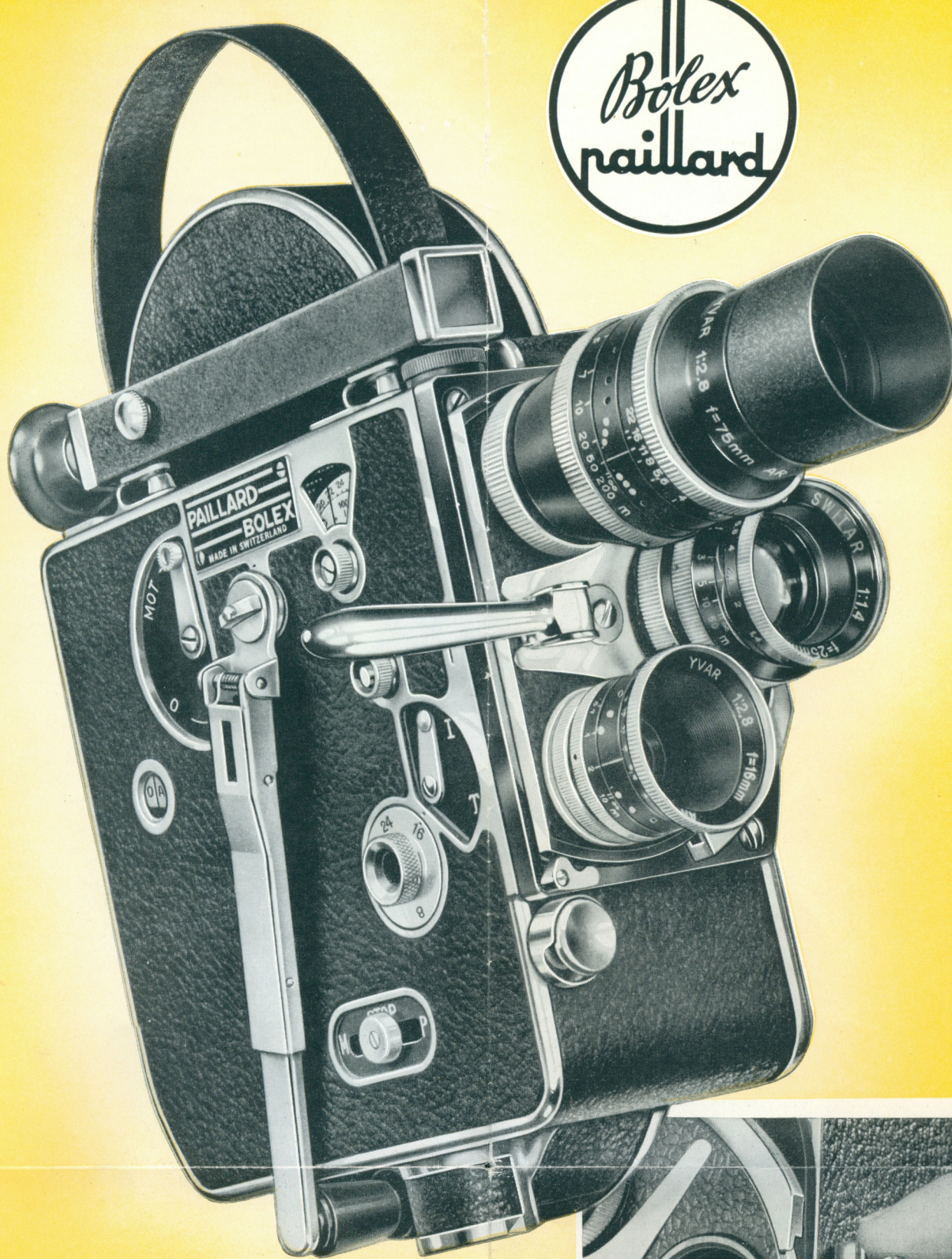
Forward and reverse motion

The Bolex H camera's clockwork motor can be disengaged at will and the camera driven instead by a small **hand crank**. This crank, which can be operated forward or backward, allows lengthy scenes to be shot without the interruptions needed for rewinding, and also permits the camera to be run in **reverse motion** — key to many original effects, such as multiple exposures, lap dissolves and so on. Thanks to this feature, and to the accurate frame counter, the cameraman can withdraw and reinsert partly-exposed film — say in changing over from black-and-white to color film, or vice versa — without losing a single frame.

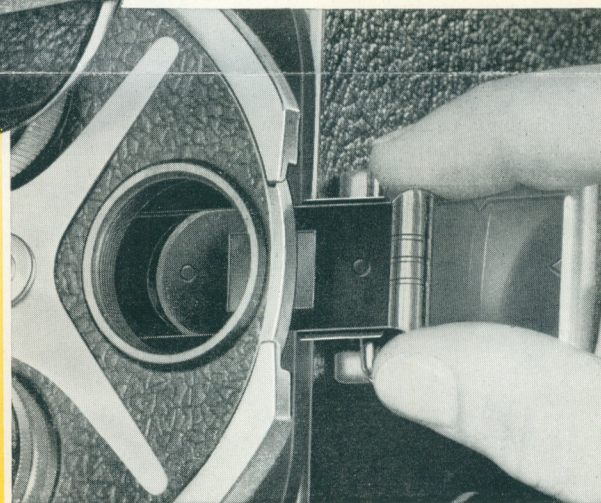
Versatile operation

Thanks to the Bolex H camera's dual filming controls, the movie-maker can change over at will from **intermittent to continuous operation**, and he can also use the Bolex as an ordinary camera for making snapshots or time exposures **frame by frame**. This latter feature is especially useful for recording scientific experiments, for motion analysis and for titling and cartoons or other trick work. Continuous running allows the operator to appear in the film himself, whilst by using a cable release he can avoid camera shake when working with the tripod or telephoto lens.

In order to render the operating button immune to prying hands or accidental pressure, it is sufficient to **disconnect the motor** by lowering the control lever.



PAILLARD-BOLEX H CINE-CAMERA



FILTER SLOT

Handsome appearance - Supreme performance

Sober, functional styling, well-balanced lines and the sheer elegance of its black Morocco leather lining stamp the Bolex H camera every inch a thoroughbred — and so it is! A byword from the outset for **outstanding reliability**, this gem of Swiss precision engineering has been developed throughout the years to a high pitch of technical perfection. Today, no other 16 or 8 mm camera can boast **so many really worthwhile features combined with such ease of handling**. Proven time and again in tropic heat and Arctic cold, the Bolex H camera is **entirely insensitive to climatic conditions**... can be counted on to give faultless service, any time, anywhere... That is why leading scientists, sportsmen and others all the world over who demand the finest, and the finest only, consistently place their faith in the Bolex H camera. Ask them, and they'll all tell you: «For professional results — get a BOLEX!»

Octameter viewfinder

The Octameter Viewfinder is a precision optical instrument. An ingenious device permits **stepless adjustment** of the viewfinder field to match lenses of 8 different focal lengths, i.e.

16 - 25 - 35 - 50 - 63 - 75 - 100 and 150 mm (Bolex H 16)

6.5 - 9 - 12.5 - 25 - 36 - 50 - 63 and 75 mm (Bolex H 8)

The Octameter Viewfinder gives a large, bright and **extremely sharp** view of the scene filmed. Framing is **instant and accurate**, since a mere turn of a knob alters the viewfinder field from that of a standard-focus lens to that of a wide-angle or telephoto lens. A built-in mirror allows the operator to keep a constant check on the focal length in use. An accurate parallax corrector ensures **perfect centering** of subjects between infinity and 1.5 feet from the camera.

The Octameter Viewfinder is **removable** — another exclusive Bolex feature. Thus the movie-maker can quickly select the viewpoint affording the best shooting angle and pictorial balance by trial-and-error, without having to keep moving the camera about on its tripod.

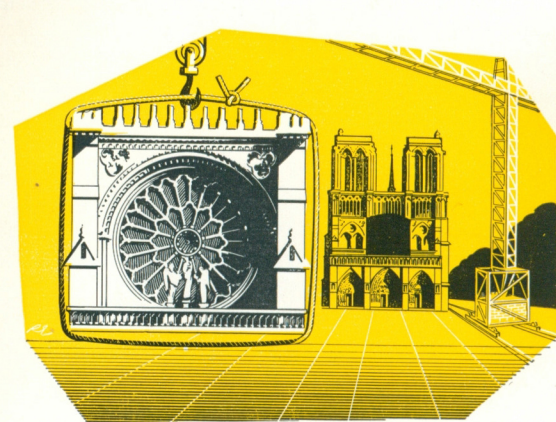
Eye-level focus

Invaluable when **ultra-sharp focusing**, particularly of close-ups, is required. Provides a brilliant view of the subject, magnified 10 times. Focusing is done by simply turning the focusing ring on the lens until the subject seen in the Eye-Level Focus appears perfectly sharp. Special eyepieces, adjusted to match the movie-maker's eyesight, available for added convenience in use.

Filter Slot

Exclusive to the Bolex H 16 !

Positioned between taking lens and film gate, the filter slot allows use of a **single filter**, irrespective of which lens is being used. Saves time and money by doing away with the need for a set of filters of different sizes to fit each lens on the turret. No longer need the operator laboriously change and clean the filters every time he switches lenses. Keeps filters safely away from dust and jolts. Each Bolex H 16 camera is supplied with a complete set of the most usual gelatin filters and mounts for black-and-white and color film.



Three-lens turret

Precision-machined for accurate positioning, the revolving 3-lens turret fitted to Bolex H cameras is designed for maximum convenience of operation. Easy manipulation is ensured by the turret handle, and the correct position of each lens for filming or for focusing with the Eye-Level Focus is located out by click-stops. Thanks to the 3-lens turret, the operator can switch over from wide-angle to telephoto lens quickly and effortlessly. The change from **general view to close-up can thus be effected without moving a step** and without spoiling the continuity of the take.

Made to match the Bolex... KERN-PAILLARD LENSES

Kern & Co. of Aarau, renowned Swiss optical instrument manufacturers, have cooperated with Paillard of Ste-Croix in developing a complete range of lenses for the Bolex H camera. The result — KERN-PAILLARD lenses — have quickly earned an outstanding reputation as leaders in their field. Kern-Paillard lenses reproduce subjects in black-and-white or colors with equal **brilliance and fidelity**, and provide **sharp, distortion-free images**, even at full aperture. These highspeed lenses owe their exceptional performance and ability to render the most delicate contrasts to their fine optical design, to the use of specially-selected glasses and to **AR-Coating** — a special "blooming" process to which each lens element is subjected. The strong, precision-made lens mounts are fitted with stainless focusing and diaphragm rings and easy-to-read scales, including an automatic depth of field indicator (Mobile Compass or Visifocus patented scale).

Lenses for the Bolex H 16

Owners of Bolex H 16 cameras can choose between two standard sets of lenses:

"OPTIMUM" SET

SWITAR	16 mm	f: 1.8	wide-angle lens
SWITAR	25 mm	f: 1.4	standard-focus lens
SWITAR	50 mm	f: 1.4	telephoto lens

"ECONOMY" SET

YVAR	16 mm	f: 2.8	wide-angle lens
PIZAR	26 mm	f: 1.9	standard-focus lens
YVAR	75 mm	f: 2.8	telephoto lens

Also available are:

HIGH-MAGNIFICATION TELEPHOTO LENSES

YVAR	100 mm	f: 3.3
YVAR	150 mm	f: 4



Wide range of filming speeds

Bolex H cameras can be set to any filming speed between **8 and 64 frames per second**. Thus by filming at faster or slower rates than the normal speeds of 16 or 24 frames per second, the movie-maker can produce all kinds of interesting and amusing trick effects. Action shot at 32, 48 or 64 frames per second is reproduced on the screen in **slow motion** — invaluable for scientific, educational or advertising films — whereas highly comic and original **accelerated motion** effects are obtained by shooting at 8 frames per second. The filming rate remains **absolutely constant**, irrespective of whether the motor is fully wound up or not, and the camera stops **automatically** before the spring begins to run down.

Compact shape, light weight

The designing of a motion picture camera which offers so many features packed in so small a space is no mean achievement. Yet in the Bolex H this has been done without sacrificing either strength or efficiency. The entire camera without its lenses weighs only about 5 1/2 lbs, while its compact size (height 8 1/4", length 6", width 3 1/8") and convenient, well-balanced shape also contribute to the Bolex H camera's remarkable **ease of handling**.

A **deluxe leather carrying case**, with room for all the usual accessories, adds the final touch of distinction and provides a handy and protective means of storage and transport.

SHOOT YOUR OWN "3-D" MOVIES

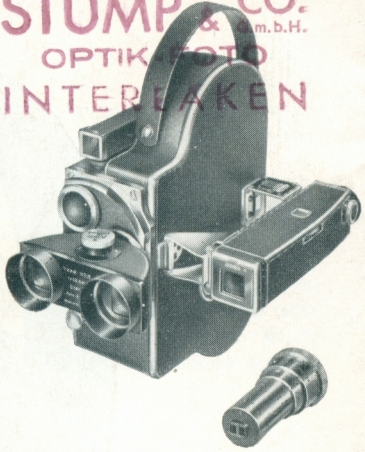
IN BLACK-AND-WHITE OR IN
COLORS WITH **KERN-PAILLARD**
STEREO EQUIPMENT

Shot in 3-dimensional technique, the most ordinary subjects hold the spectator spellbound with their startling realism. The screen seems no longer a flat plane but an open window, through which every detail of the scene appears so lifelike you could almost touch it. Hailed by movie-makers everywhere as a great new development which has extended the already wide scope of 16 mm motion pictures further still, **KERN-PAILLARD Stereo Equipment** — the finest of its kind on the market — has already found countless applications in family, sports, scientific, medical, instructional and advertising films and in many other fields. It includes :

- **Stereo Camera Lens** comprising 2 twin YVAR f:2.8 taking lenses with fixed focusing, giving sharp pictures at distances between 4 ft. and infinity. The lens is fitted onto the Bolex H 16 camera easily, without any modifications.
- **Stereo Close-Up Attachment** (a KERN-PAILLARD exclusive) for shooting close-ups up to 1.5 ft. from the camera in 3-D.
- **Stereo Projection Lens with polarized filters** available in two models, one of which is intended for Bolex G Projectors and the other for high-power American projectors.
- **Stereo Screen, metallized, and polarized viewing glasses.**

Three dimensional movies are just as easy to shoot as ordinary ones ! Ask your Bolex Dealer for a demonstration of **KERN-PAILLARD Stereo Equipment**.

STUMP & CO.
OPTIK FOTO
INTERAKEN



TWO ZOOM-TYPE LENSES FOR THE BOLEX H 16 & H 8

PAN CINOR 16 mm

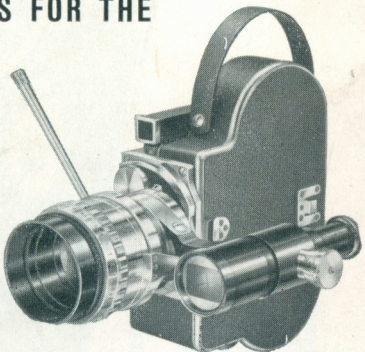
f: 2.8, focal length 20 to 60 mm
Focusing range 5 ft. to infinity.

Close-up attachments for
5 ft. and 2 1/2 ft.

PAN CINOR 8 mm

f: 2.8, focal length 12.5 to 36 mm
Focusing range 2 1/2 ft. to infinity.

With the amazing Som Berthiot **PAN CINOR Zoom Lens**, the movie-maker can make his subject appear to approach the camera or retreat from it at will, without interrupting the take, by simply altering the focal length of the lens. All kinds of traveling effects, fast and slow, broken or unbroken, can be produced without moving a step. The coupled viewfinder shows the exact field captured at all settings of the focal length, permitting **instant and accurate framing**. Especially in such fields as travel films, sports reporting and documentary work, the versatile Pan Cinor allows the use of a more flexible technique and opens the way to a host of thrilling effects.





PRIX-COURANT CAMÉRAS „H”

Valable à partir du 1er mars 1955

Caméra H-16 Filterslot pour film 16 mm, avec viseur multifocal, 5 porte-filtres, 1 jeu de 5 filtres gélatine Kodak Wratten (Skylight-Daylight-jaune K 2-rouge A-orange) et un cache neutre, sans lunette Reflex

avec un objectif à distance focale standard

Kern Pizar AR F/1,9 26 mm
Kern Switar AR F/1,4 25 mm
Kern Switar AR F/1,5 25 mm

Objectifs complémentaires

Kern Yvar AR F/2,8 16 mm
Kern Switar AR F/1,8 16 mm
Kern Pizar AR F/1,9 26 mm
Kern Switar AR F/1,5 25 mm
Kern Switar AR F/1,4 25 mm
Kern Switar AR F/1,4 50 mm
Kern Yvar AR F/2,8 75 mm
Kern Yvar AR F/3,3 100 mm
Kern Yvar AR F/4,0 150 mm

PAN CINOR F/2,8, focale variable 20 à 60 mm, viseur couplé
Etui

Caméra H-8 pour film 2 x 8 mm, avec viseur multifocal, manette de commande de la tourelle, sans dispositif Filterslot

avec un objectif à distance focale standard

Kern Yvar AR F/2,8 12,5 mm avec filtres incorporés Filтин
Kern Yvar AR F/1,9 13 mm
Kern Switar AR F/1,5 12,5 mm

Objectifs complémentaires

Kern Yvar AR F/2,5 25 mm
Kern Yvar AR F/2,8 36 mm
Kern Pizar AR F/2,0 5,5 mm Fix-Focus
Kern Switar AR F/1,8 5,5 mm

Bague permettant d'utiliser un objectif de la H-16 sur une H-8

PAN CINOR F/2,8, focale variable de 12,5 à 36 mm

ACCESOIRES

Malette en cuir, modèle de luxe

Déclencheurs à câble métallique

45 cm
100 cm

Viseur réflexe pour visée sur dépoli
pour H-16
pour H-8

Cadreur sur fenêtre pour caméras H-16 à partir du No. 100.401 et H-8 à partir du No. 97.801

Viseur d'angle

Cine-Fader-Bool

compendium automatique pour fondus simples, ouverts ou fermés, et fondus enchaînés

Iris à fermeture totale

pour objectif Switar de la H-8
pour objectif Switar 25 mm et Pizar 26 mm de la H-16

Compensateur de parallaxe (Rack-over)

Poignée statique avec déclencheur à câble, pas de vis Congrès et Kodak

Poignée déclic, pour caméras «H»

avec pas Congrès

avec pas Kodak

Moteur électrique d'entraînement pour caméras «H», sans pile, sans sacoche

Pile «Leclanché» (alimentation 5 piles) la pièce

Sacoche cuir pour moteur et 5 piles

Code 820.- Fr.

PIMET 1287.—
WIMET 1483.—
KEMET 1318.—

YVERI 194.50
SWESE 356.—
HAPIZ 364.—
SWATO 393.—
SWITA 549.—
SWIFI 572.—
YVORA 324.50
YVENT 356.—
YVONG 457.50

PANCI 1217.—
PANSU 67.60

ACFIT 1034.—
ACYAR 1023.—
ACSWI 1232.—

HUARO 194.50
YVITA 205.—
PIZUI 312.—
SWINQ 443.—

BAGOM 12.50

HUPAN 832.—

MALOR 184.10

DECLA 13.55
DELON 17.70

REFSE 83.20
REFTU 83.20

CADIL 62.40

VIANG 22.90

FADER 62.40

IRIAS 62.40
IRIPA 62.40

RACKE 69.—

STAIC 52.—

PODEC 56.15
PODAL 56.15

MOSTE 229.—
MOBAT 6.85
MOSAC 62.40

Transformateur «T 12» pour moteur , avec câble 1,20 m, sans prise	Code	Fr.
Coffret en bois pour moteur et transformateur	MOTRA	83.20
	MOTUI	16.65
Trépied pour caméras «H»	PODOM	249.60
Housse	PODUS	68.65
Filtres à vis (jaune, rouge, vert, orange ou gris), dans boîte plexi pour objectifs 8 mm f = 5,5 à 36 mm	FILIR	10.40
Bagues d'adaptation à vis pour filtres 20 mm ϕ KODAK WRATTEN Série IV ou ANSCO Série 4 pour objectifs Switar et Pizar f = 5,5	ABSWE	11.45
Bague ABSWE avec parasoleil ABFIL pour objectifs 8 mm f = 12,5 à 36 mm	AFFOL	30.15
Bague ABWAR avec parasoleil ABBAT	ABWAR	7.30
	AFBAL	12.50
Bagues d'adaptation à griffes pour filtres 30 mm ϕ KODAK WRATTEN Série V ou ANSCO Série 5 pour objectifs 8 mm f = 12,5 à 36 mm		
Bague ADARE avec parasoleil ADPAR	ADAPT	15.60
Bague de serrage pour maintenir en place les filtres dans les bagues (remplace le parasoleil)	ADELT	7.30
Bagues d'adaptation pour filtres de polarisation (POLA-SCREEN KODAK) pour objectifs 8 mm f = 12,5 à 36 mm	ABWAR	7.30
Parasoleil à vis pour objectifs à pas de vis frontal pour objectifs 8 mm f = 12,5 à 36 mm pour objectifs 8 mm f = 12,5 à 36 mm (seulement avec bague ABWAR)	FILUL	5.20
	ABBAT	5.20
Parasoleils à griffes pour objectifs Switar et Pizar f = 5,5	ABFIL	18.70
Accessoires Stéréo		
Objectif de prises de vues Kern-Paillard Stéréo se composant de 2 objectifs Yvar F/2,8 12,5 mm Fix-Focus pour Paillard H-16	STENN	416.—
Accessoire pour prises de vues Stéréo entre 75 et 120 cm	STOUP	145.50
Objectif de projection Kern-Paillard Stéréo G F/1,6 20 mm pour projecteurs Paillard modèle «G» avec filtres polarisés incorporés	STEGE	364.—
Objectif de projection Kern-Paillard Stéréo S F/1,6 20 mm avec tube No 1 et filtres polarisés incorporés pour projecteurs B & H Filmosound 185 B et 185 C, Diplomat et Showmaster	TUBAS	374.50
Objectif de projection Kern-Paillard Stéréo S F/1,6 20 mm avec tube No 2 et filtres polarisés incorporés pour projecteurs REVERE 48 et 16 mm Sound, AMPRO Impérial, Premier 20, Premier 30, Stylist, Arc et Magnetic, VICTOR Escort, Sovereign et Lightweight, DE VRY 14000, RCA Junior, Senior et 400 Magnetic, NATCO Sound	TUROS	374.50
Objectif de projection Kern-Paillard Stéréo S F/1,6 20 mm avec tube No 3 et filtres polarisés incorporés pour projecteurs KEYSTONE A-82, K-160 et K-161	TUFOR	374.50
Objectif de projection Kern-Paillard Stéréo S F/1,6 20 mm avec tube No 4 et filtres polarisés incorporés pour projecteurs KODAK Kodaskop 16/10, 16/20 et Pageant	TUTAR	374.50
Ecran de projection métallisé grandeur 85 x 65 cm, avec bord noir, sur trépied	ECAST	156.—
Ecran de projection métallisé grandeur 100x130 cm, avec bord noir, sur trépied	ECRAS	291.50
Lunettes polarisées en celluloïd	LUCEL	10.40
Lunettes polarisées en verre	LUVER	23.—

