



KODAK



KODAKS

and
Kodak Supplies



1919
CANADIAN KODAK CO., LIMITED
Toronto, Canada



*Made with No. 3A Kodak and
Kodak Portrait Attachment*

KODAK

Resourcefulness

EVERY fact established in one line of endeavor is of value in some allied activity. In covering the whole field of photography, the Kodak organization is able to apply its broad knowledge and its manufacturing resources in a manner that would be impossible to a concern working in a smaller sphere.

Even the original Kodak itself was a development based on years of previous experience in the manufacture of goods for the professional photographer. Originally the Eastman Company manufactured glass dry plates, then Bromide papers (the kind of paper that is used for enlargements). It took up also the manufacture of cameras and roll-holders. These roll-holders were simply an attachment to be fitted to the ordinary plate camera, whereby a paper-base film could be used instead of glass plates. Then, instead of making it as an attachment, the roll-holder became a part of the camera itself and we had—a Kodak.

Even in those early days it was a combination of the knowledge gained in the various fields that made the Kodak Idea possible. The company had had a wide experience in making the rapid negative emulsion used on dry plates. It had had experience in coating, in a continuous roll, the slower emulsion on Bromide paper; it had had experience in camera making and in roll-holder making.

Then this knowledge was combined. The fast emulsion was coated on a paper base; the roll-holder, providing for the use of this "film," became a part of the camera, and the Kodak system was complete—ready to make photography easy for everybody.

No mere manufacturer of dry plates or photographic paper or of cameras could have successfully brought this about. It required an interlocking knowledge of all three products and the facilities for making them. These the Eastman Company had, even then, and that was away back in 1888.

But it was obvious to everybody, and particularly to those in the Eastman factories, that the paper film was far from being the perfect thing it should be. What was required was a flexible base that, like a glass plate, was transparent. Such a base was evolved, but it did not merely make the Kodak more efficient; it made the motion picture possible.

To-day the Kodak Companies serve the world in photography. Their activities are broad and their manufacturing facilities are in keeping with them, while through the work of the Research Laboratory they have become more than mere manufacturing concerns, as evidenced by the vital contributions to every science.

Kodak serves, and serves well, with plates and films and papers and cameras and chemicals, the professional photographer. Its orthochromatic and panchromatic plates are now essentials in science and in industry; its X-Ray products have proved of the highest aid in the mending of men, and its special cameras and films and plates and filters and high-power lenses—developed almost over night—helped detect German troop movements and camouflage, and aided in the great battles that turned back the invading hosts from suffering France.

And it is the very size of the Kodak organization, it is because its vastness enables it, regardless of expense, to acquire, in chemistry, in optics, in every branch of photographic manufacture, the best talent from the world over that it is able to keep in the forefront of photographic progress. Every department is closely in touch with every other department; every experiment made for one branch of the work is almost certain to be of value in some allied department.

A chemical discovery that adds to the quality of a professional product is made use of in improving a similar amateur product. The organization that perfected the Kodak Anastigmat lenses made it possible to quickly turn out for the U. S. aerial forces the mammoth, high-power lenses which, with microscopic definition told, often from an altitude of 20,000 feet, what the enemy was doing—and it was the knowledge of color filters and orthochromatic photography that made it possible to take such pictures through the smoke and haze of battle.

It was a combination of a knowledge of photography in all the branches, with the facilities for applying that knowledge, that made North America less dependent on foreign sources of supply when war came. For years the trade had been largely dependent upon Germany for fine lenses. Germany has never made a lens that could equal in its work that which has been done by air men with lenses designed and made in the Kodak factories. We were dependent very largely upon Germany for certain developers.

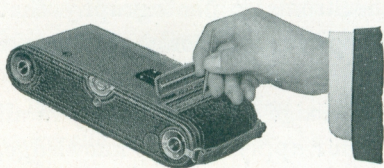
And so even the simple little box Brownies and the films that they contain have back of them the best the world has to offer in scientific knowledge. It may seem a far cry from the Kodak “snap” of Johnny and Towser romping on the front lawn to an astronomical record of the great eclipse or the thousand-time enlargement of a new germ, but the same thought and research are back of both—and a service has been performed for the whole world.

CANADIAN KODAK CO., LIMITED,
TORONTO, CANADA

THE AUTOGRAPHIC FEATURE

EVERY negative worth the taking is worth a date and usually a further title. And it is a simple matter to make this record.

All Folding Kodaks and Folding Brownies have a little door in the back, covering a panel opening through which one



may write on the red paper that protects the film. After the title is written on the red paper it is exposed for a few seconds to the light, and after development becomes a photographic part of the

negative itself, such title appearing on the blank section between the exposures.

The record is as permanent as the negative itself.

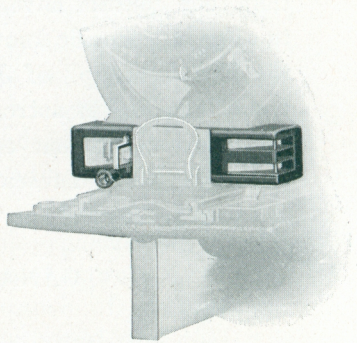
THE KODAK RANGE FINDER

THE Kodak Range Finder gives you the correct focus to a hair, and with little trouble.

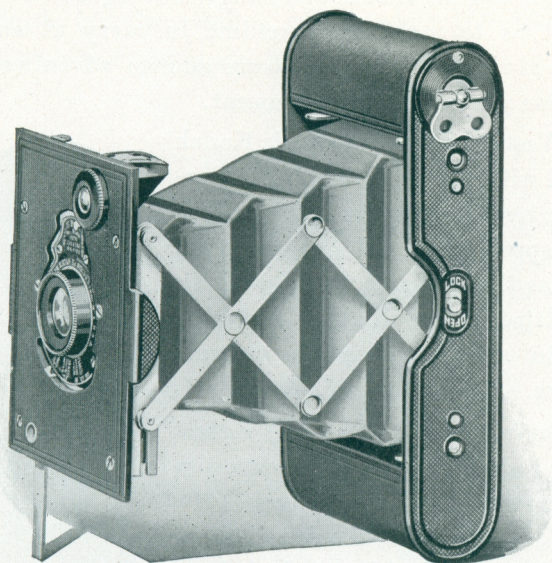
Open the Kodak, drawing out the standard to the limit of motion, and holding the Kodak in the horizontal position, look through (not at) the Range Finder at the three mirrors. Select some horizontal line near the center of the subject, and rack the lens back and forth until this line is continuous in the three mirrors.

When the line is continuous, the focus is correct. It is all very simple and certain.

The Kodak Range Finder is fitted to the 1A and 3A Specials only.



SHOWING POSITION OF RANGE FINDER ON 3A Special



VEST POCKET *Autographic* KODAK

THE Vest Pocket Kodak is all that its name implies, and just as on a small scale a watch is the counterpart of a chronometer, so also is the little Vest Pocket the counterpart of its bigger brothers. Like them it makes pictures with real photographic quality.

Its operation is simple. Opening with one movement to a fixed focus, it is instantly ready for service. And with its autographic feature, it is a veritable vest pocket notebook, adding to the photographic record, the memorandum record of all that goes to make every good time a lasting pleasure. It fits into the day and the place unobtrusively, and though made almost entirely of

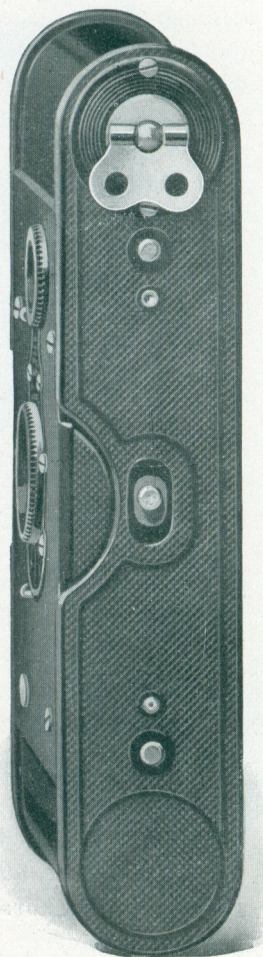


metal to stand the knocks and bangs, is so light in weight and compact as to make it convenient to carry at any time. There's always an added pleasure and an advantage in the possession of this little instrument.

The Vest Pocket Autographic Kodak is fitted with No. 0 Kodak Ball Bearing shutter, working without jerk or jar, at speeds of $\frac{1}{25}$ and $\frac{1}{30}$ of a second, as well as the time and "bulb" actions. Also fitted with Kodak Autotime Scale to aid in giving the correct exposure.

It makes pictures $1\frac{5}{8} \times 2\frac{1}{2}$ inches, loading in daylight with eight-exposure Autographic Film Cartridges (No. A127). The Vest Pocket (\$9.00 model) is supplied with tested meniscus achromatic lens, and the \$10.50 model, with carefully tested Rapid Rectilinear lens, both producing excellent pictures under all ordinary conditions.

The three Anastigmat equipments for the Vest Pocket, *Special*, are as perfect as can be found on any fixed focus hand camera. The Kodak Anastigmat, *f. 7.7* lens, offers the usual advantages of an anastigmat, so far as sharpness, definition and freedom from astigmatism are concerned. The Kodak Anastigmat and Bausch & Lomb Kodak Anastigmat, *f. 6.9* lenses, give, in addition to these same advantages, an increased lens speed.



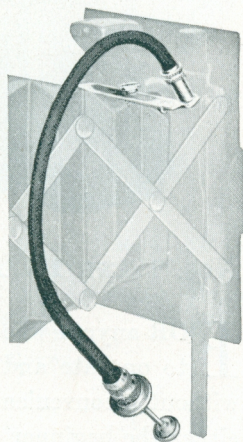
VEST POCKET KODAK
(REGULAR) ACTUAL SIZE

The Vest Pocket Kodak has an all-metal body with black enamel finish for the regular model, while the *Special* is covered with finest pin grain Morocco leather.

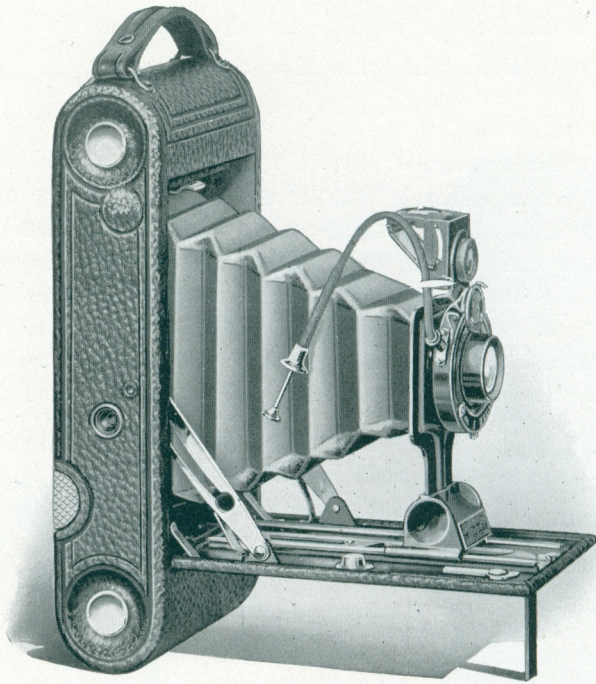
Details For rectangular pictures, $1\frac{5}{8} \times 2\frac{1}{2}$ inches. Capacity, 8 exposures without reloading. Size of Kodak, $1 \times 2\frac{3}{8} \times 4\frac{3}{4}$ inches. Weight, 9 ounces. Lens, regular model, meniscus achromatic; for *Special*, Kodak Anastigmat, *f. 7.7*, $3\frac{3}{8}$ -inch focus; Kodak Anastigmat, *f. 6.9*, $3\frac{3}{8}$ -inch focus; or Bausch & Lomb Kodak Anastigmat, *f. 6.9*, $3\frac{1}{2}$ -inch focus. Shutter, Kodak Ball Bearing No. 0. Brilliant, reversible finder. All metal body, *Special* covered with pin grain Morocco; nickel and black enamel finish and black leather bellows.

Price

Vest Pocket Autographic Kodak (regular model), meniscus achromatic lens and Kodak Ball Bearing shutter . . .	\$ 9.00
Ditto, with Rapid Rectilinear lens, speed U. S. 8	10.50
Vest Pocket Autographic Kodak, <i>Special</i> , Kodak Anastigmat lens, <i>f. 7.7</i> , and Kodak Ball Bearing shutter . . .	16.00
Ditto, with Kodak Anastigmat, <i>f. 6.9</i> lens	21.50
Ditto, with Bausch & Lomb Kodak Anastigmat, <i>f. 6.9</i> lens	32.50
Grain Leather Case	2.00
Belt Carrying Case (russet leather)	1.75
Leather Case for Vest Pocket Kodak75
Vest Pocket Cable Release Attachment50
Vest Pocket Kodak Tripod Adapter. (See page 57)50
Autographic Film Cartridge, 8 exposures, $1\frac{5}{8} \times 2\frac{1}{2}$ (No. A 127)20
Kodak Portrait Attachment. (See page 39)50



SHOWING VEST POCKET
CABLE RELEASE ATTACH-
MENT IN USE



Nos. 1 AND 1A *Autographic* KODAK JUNIORS

FOR anyone who wants a thoroughly reliable camera, easy to operate and so thin and compact as to be pocketed without inconvenience, the Juniors recommend themselves for either the beginner or the experienced, and at a low cost.

Though simple in every detail as focusing cameras, they will be supplied, if desired, as fixed focus cameras for those who prefer this feature. As fixed focus cameras, however, they are supplied only with meniscus achromatic lenses, as listed.

Both cameras are fitted with the Kodak Ball Bearing shutter, with cable release; the No. 1 having speeds of $\frac{1}{25}$ and $\frac{1}{50}$ of a second, except when supplied with *f.* 7.7 lens, in which

case it has the same shutter that is supplied with the No. 1A, with speeds of $\frac{1}{25}$, $\frac{1}{50}$ and $\frac{1}{100}$ of a second.

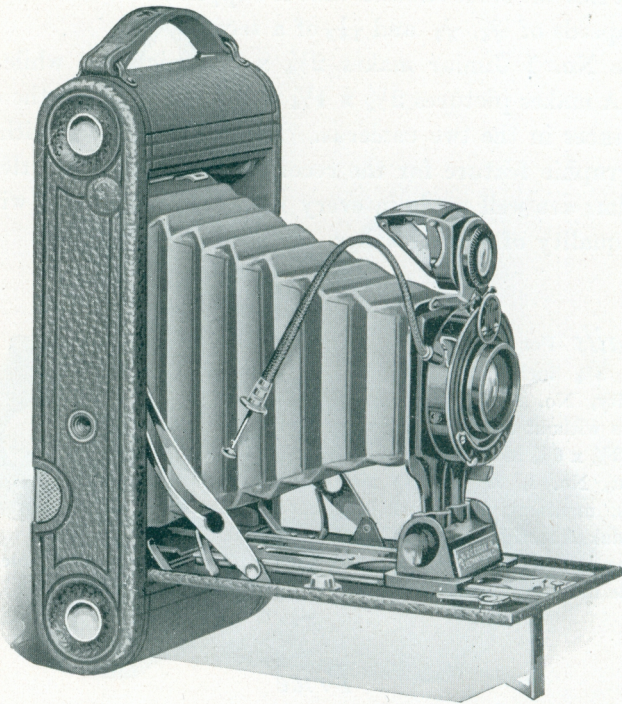
The No. 1 Junior makes $2\frac{1}{4} \times 3\frac{1}{4}$ pictures, while the No. 1A makes pictures $2\frac{1}{2} \times 4\frac{1}{4}$ inches, these being the only differences in the two cameras. Both are equipped with the autographic feature for the recording of dates and titles on the film; are well made in every respect, and covered with a good quality of grain leather.

Details For rectangular pictures, No. 1, $2\frac{1}{4} \times 3\frac{1}{4}$ inches; No. 1A, $2\frac{1}{2} \times 4\frac{1}{4}$ inches. Capacity, No. 1, 6 exposures; No. 1A, 12 exposures without reloading. Size of Kodak, No. 1, $1\frac{7}{16} \times 3\frac{5}{8} \times 6\frac{5}{8}$ inches; No. 1A, $1\frac{5}{8} \times 3\frac{3}{4} \times 8$ inches. Weight, No. 1, 23 ounces; No. 1A, 28 ounces. Lenses, meniscus achromatic, Rapid Rectilinear, or Kodak Anastigmat, *f. 7.7*. Shutter, Kodak Ball Bearing with cable release. (See page 36.) Brilliant, reversible, collapsible finders.



Price

	No. 1	No. 1A
Autographic Kodak Junior (fixed focus) meniscus achromatic lens and Kodak Ball Bearing shutter	\$12.50	\$14.50
Autographic Kodak Junior (focusing model; with scale), meniscus achromatic lens and Kodak Ball Bearing shutter	12.50	14.50
Ditto, with Rapid Rectilinear lens	14.00	16.75
Ditto, with Kodak Anastigmat lens, <i>f. 7.7</i>	19.75	23.00
Black Sole Leather Case, with strap	3.00	3.00
Autographic Film Cartridge, 12 exposures (No. A 116) for No. 1A50
Ditto, 6 exposures (No. A 120) for No. 1; (No. A 116) for No. 1A20	.25
Ditto, 2 exposures10	.12
Kodak Portrait Attachment. (See page 39)50	.50



No. 2C *Autographic* KODAK JUNIOR

THE 2C Junior is similar, in every way, to the Nos. 1 and 1A Juniors, except in the size of the pictures it makes. It has the same thin, compact form and reliable equipment, but is supplied only as a focusing camera.

The 2C size, which was introduced about three years ago, was designed to retain the same pleasing proportions that have made the 1A and 3A sizes so popular. Its rectangular pictures ($2\frac{7}{8} \times 4\frac{7}{8}$) fit the view, making a pleasing composition in either the horizontal or vertical shapes.

The camera loads in daylight with ten, six or two-exposure Autographic Film Cartridges, permitting the recording of

date and title, or any data that one may desire on the negative. Though regularly supplied with meniscus achromatic lens, the camera, if desired, will be fitted with either Rapid Rectilinear or Kodak Anastigmat, *f*.7.7 lens, the latter giving the advantages of a fine anastigmat equipment at a low price.

The shutter is the Kodak Ball Bearing with cable release, working at speeds of $\frac{1}{25}$, $\frac{1}{50}$ and $\frac{1}{100}$ of a second, also for "bulb" and time exposures. The leaves of this shutter, opening in the shape of a star, admit the maximum of light for a given exposure.

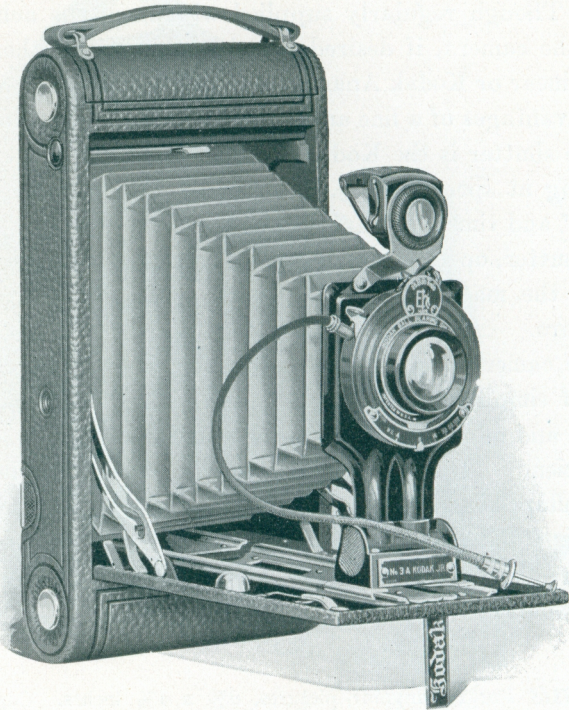


The camera has the Kodak characteristics of simplicity, compactness and reliability, and offers the Kodak high standard of efficiency. It has automatic focusing lock, a finder of the new collapsible, reversible type, and two tripod sockets. The back and bed are of aluminum, covered with fine seal grain leather, black leather bellows, and metal parts in nickel and black enamel.

Details For rectangular pictures, $2\frac{7}{8} \times 4\frac{7}{8}$ inches. Capacity, 10 exposures without reloading. Size of Kodak, $1\frac{3}{4} \times 4\frac{3}{8} \times 8\frac{3}{4}$ inches. Weight, 38 ounces. Lens, meniscus achromatic. Also supplied with Rapid Rectilinear or Kodak Anastigmat, *f*.7.7 lens, $5\frac{3}{4}$ -inch focus, if desired. Shutter, Kodak Ball Bearing with cable release. (See page 36.) Brilliant, reversible, collapsible finder. Two tripod sockets. Black leather bellows.

Price

No. 2C Autographic Kodak Junior, with meniscus achromatic lens and Kodak Ball Bearing shutter	\$16.75
Ditto, with Rapid Rectilinear lens	18.75
Ditto, with Kodak Anastigmat, <i>f</i> .7.7 lens	25.25
Black Sole Leather Case, with strap	3.25
Autographic Film Cartridge, 10 exposures (No. A 130)60
Ditto, 6 exposures35
Ditto, 2 exposures15
Kodak Portrait Attachment. (See page 39)50



No. 3A *Autographic* KODAK JUNIOR

HERE is a new camera, which is designed to meet the requirements of those who prefer the simplicity of the Junior line, in the 3A size. It has the same general characteristics as the other Juniors; the same relatively thin, compact form; the same reliable equipment, and like the 2C, is supplied only as a focusing camera.

The No. 3A Kodak Junior makes pictures $3\frac{1}{4} \times 5\frac{1}{2}$ inches—the most popular of amateur sizes—which is adaptable to almost any composition, whether in the vertical or horizontal position. It loads with Autographic Film Cartridges of ten,

six and two exposures, and, of course, has the autographic feature so that the dates and titles may be written on the films at the time of exposure.

The camera is regularly supplied with meniscus achromatic lens, but, if preferred, may be had with either Rapid Rectilinear, or Kodak Anastigmat, *f. 7.7* lens, the latter a lens of our own manufacture which has given excellent results.

The shutter used is the No. 2 Kodak Ball Bearing with both finger and cable release working automatically, at speeds of $\frac{1}{25}$, $\frac{1}{50}$ and $\frac{1}{100}$ of a second, also for "bulb" and time exposures.

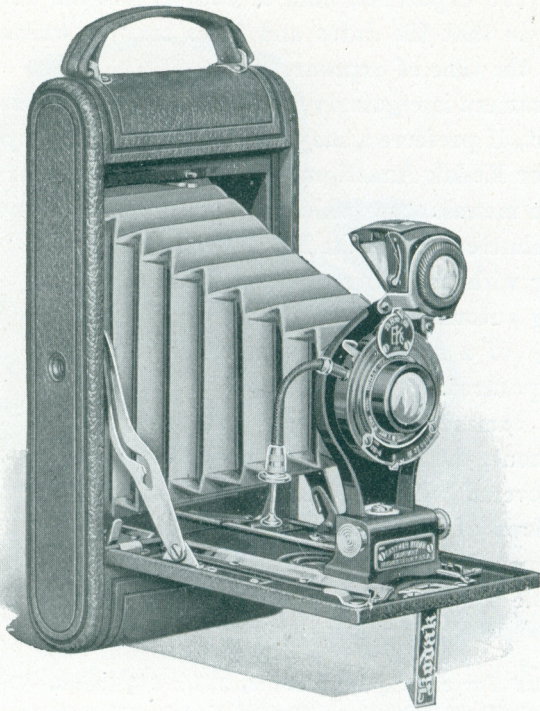


The camera is carefully constructed throughout, the back and bed are of aluminum, covered with fine seal grain leather, the bellows of black leather and metal parts in nickel and black enamel. The finder is large and of the collapsible, reversible type.

Details For rectangular pictures, $3\frac{1}{4} \times 5\frac{1}{2}$ inches. Capacity, ten exposures without reloading. Size of Kodak, $1\frac{1}{8} \times 5\frac{1}{8} \times 9\frac{3}{4}$ inches. Weight, 35 ounces. Lenses, meniscus achromatic, Rapid Rectilinear, focus $6\frac{5}{8}$ inches, or, if desired, the Kodak Anastigmat, *f. 7.7* lens, $6\frac{1}{8}$ -inch focus. Shutter, Kodak Ball Bearing No. 2, with cable release. Automatic focusing lock. Two tripod sockets. Brilliant, collapsible, reversible finder. Black leather bellows. Covering, seal grain leather.

Price

No. 3A Autographic Kodak Junior, with meniscus achromatic lens	\$18.75
Ditto, with Rapid Rectilinear lens	21.50
Ditto, with Kodak Anastigmat lens, <i>f. 7.7</i>	28.00
Black Sole Leather Carrying Case	3.50
Autographic Film Cartridge, 10 exposures (No. A 122)	.70
Ditto, 6 exposures	.40
Ditto, 2 exposures	.20
Kodak Portrait Attachment. (See page 39)	.50



No. 1A *Autographic* KODAK

A THIN, compact camera which will fit in with limited carrying accommodations; one which will load easily, operate quickly and give every photographic advantage that could be desired by the most exacting amateur, is a desirable companion on any occasion. Such is the 1A Kodak, possessing as it does, many features which add not merely to its efficiency, but its appearance as well.

The back is so cleverly devised as to permit free and instant access to all interior parts; the finder is large and of the collapsible, reversible, skeleton type, which is easily accessible for cleaning.

The No. 1A makes $2\frac{1}{2} \times 4\frac{1}{4}$ pictures, a shape that is widely adaptable to either horizontal or vertical composition. It has the autographic feature for the recording of data on the film, and loads in daylight with twelve, six and two-exposure Autographic Film Cartridges.

Although regularly supplied with the best quality Rapid Rectilinear lens, it will be fitted, if desired, with Kodak Anastigmat lens, *f.* 7.7, giving the advantages of a fine anastigmat equipment at a low price. The shutter is the Kodak Ball Bearing, with cable release, working at speeds of $\frac{1}{25}$, $\frac{1}{50}$ and $\frac{1}{100}$ of a second, and time and "bulb" exposures.

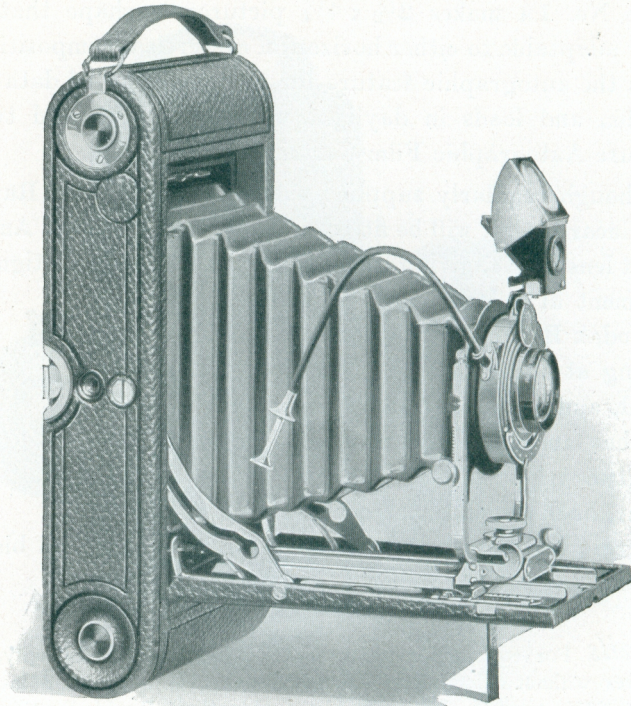


It has an improved automatic focusing lock, two tripod sockets, bellows of black leather, back and bed are covered with fine seal grain leather, and metal parts are in nickel and black enamel.

Details For rectangular pictures, $2\frac{1}{2} \times 4\frac{1}{4}$ inches. Capacity, 12 exposures without reloading. Size of Kodak, $1\frac{5}{8} \times 3\frac{3}{4} \times 8$ inches. Weight, $27\frac{1}{2}$ ounces. Lens, double combination, Rapid Rectilinear, $5\frac{5}{8}$ -inch focus, or if desired, Kodak Anastigmat lens, *f.* 7.7, $5\frac{1}{8}$ -inch focus. Shutter, Kodak Ball Bearing with cable release. Automatic focusing lock. Two tripod sockets. Brilliant, collapsible, reversible finder. Black leather bellows.

Price

No. 1A Autographic Kodak, with Rapid Rectilinear lens and Kodak Ball Bearing shutter	\$20.00
Ditto, with Kodak Anastigmat lens, <i>f.</i> 7.7	26.25
Black Sole Leather Case, with strap	3.00
Autographic Film Cartridge, 12 exposures (No. A 116)50
Ditto, 6 exposures25
Ditto, 2 exposures12
Kodak Portrait Attachment. (See page 39)50



Nos. 3 AND 3A *Autographic* KODAKS

THE 3A Kodak is the camera that gave pictures of the post-card size ($3\frac{1}{4} \times 5\frac{1}{2}$) their popularity. Pictures of this size and shape are peculiarly adapted to either landscape or portraits and are the largest pictures that can be made with a truly pocket camera. Although the largest of the Kodak series, the 3A may be carried without inconvenience. No detail has been added that is superfluous and none omitted that is essential to the best results in general amateur photography. With its autographic feature, the 3A Kodak satisfies every need of the most advanced amateur.

In lens equipment, this camera is regularly supplied with the finest quality Rapid Rectilinear, with a speed of *f. 8*, or,

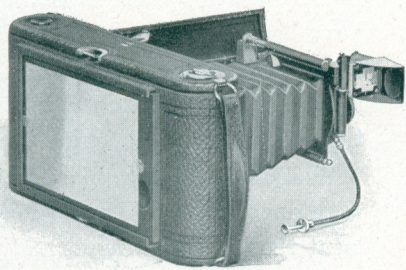
if desired, the Kodak Anastigmat, *f. 7.7* lens, offering the anastigmat advantages at a moderate price. Both the 3 and 3A will accommodate glass plates by the addition of a Combination Back. This back is interchangeable with the regular back, but it should be remembered that autographic records can be made only when the Autographic back is used, and not with Combination back on glass plates. The No. 3 Kodak is practically identical with the 3A, except in size and except that it has a capacity of twelve, six and two exposures, whereas the 3A uses ten, six and two-exposure Autographic Film Cartridges. Also No. 3 has a front standard of different design from that of No. 3A. Both are made of aluminum and covered with best quality seal grain leather.



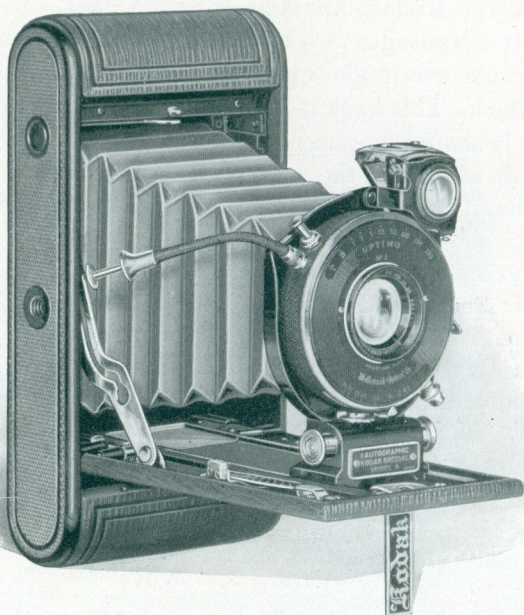
Details For rectangular pictures, No. 3, $3\frac{1}{4} \times 4\frac{1}{4}$ inches; No. 3A, $3\frac{1}{4} \times 5\frac{1}{2}$ inches. Capacity, No. 3, 12 exposures; No. 3A, 10 exposures without reloading. Size of Kodak, No. 3, $1\frac{3}{4} \times 4\frac{1}{2} \times 7\frac{1}{2}$ inches; No. 3A, $2 \times 4\frac{3}{4} \times 9\frac{1}{2}$ inches. Weight, No. 3, 23 ounces; No. 3A, 41 ounces. Lenses (regular equipment), Rapid Rectilinear, focal length for No. 3, 5 inches; No. 3A, $6\frac{3}{4}$ inches, or, if desired, Kodak Anastigmat, *f. 7.7* lenses. Shutters, Kodak Ball Bearing with cable release. Two tripod sockets. Black leather bellows. Brilliant, reversible finders with hoods. Rising and sliding fronts. Automatic focusing locks.

Prices

	No. 3 $3\frac{1}{4} \times 4\frac{1}{4}$	No. 3A $3\frac{1}{4} \times 5\frac{1}{2}$
Autographic Kodak, Rapid Rectilinear lens, Kodak Ball Bearing shutter	\$21.00	\$25.25
Ditto, with Kodak Anastigmat lens, <i>f. 7.7</i>	27.25	31.50
Black Sole Leather Case, with strap	3.00	3.50
Combination Back for plates	4.00	4.00
Double Glass Plate Holders, each	\$1.50	\$1.50
Autographic Film Cartridges, 12 exposures (No. A 118) for No. 3; .70		
10 exposures (No. A122) for No. 3A .70		
Ditto, 6 exposures .35		.40
Ditto, 2 exposures .15		.20
Kodak Portrait Attachment (See page 39)50	.50



SHOWING COMBINATION BACK



No. 1 *Autographic* KODAK, *Special*

EACH series of Kodaks has its distinctive features. In the *Specials*, quality, speed and efficiency have been ingeniously combined with compactness.

Smaller cameras than the No. 1 *Special*, for $2\frac{1}{4} \times 3\frac{1}{4}$ pictures, have been made, but here, photographic results have been considered rather than mere littleness. Its lenses have sufficient length of focus to avoid all violent perspective and at the same time the shutters are large enough to utilize the full aperture at which the lenses are listed.

This little Kodak, like any fine piece of mechanism, works with smoothness and precision—a thoroughly capable instrument that is optically correct. The regular equipment is the Kodak Anastigmat lens, *f. 6.3*, and Optimo shutter, with

cable release, highest speed $\frac{1}{300}$ of a second, and variable speeds to one second, in addition to the "bulb" and time actions. Four other high-grade lens equipments are also listed.

It is quickly opened and extended, the focusing scale is easily adjusted for all distances, by a simple lever attachment. It has a brilliant, collapsible, reversible finder with revolving mask for correct composition of pictures in both vertical and horizontal positions.

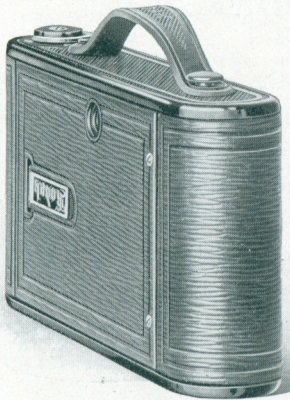
The camera is beautifully finished throughout and covered with the finest quality long grain calf; black leather bellows and highly nickeled trimmings.

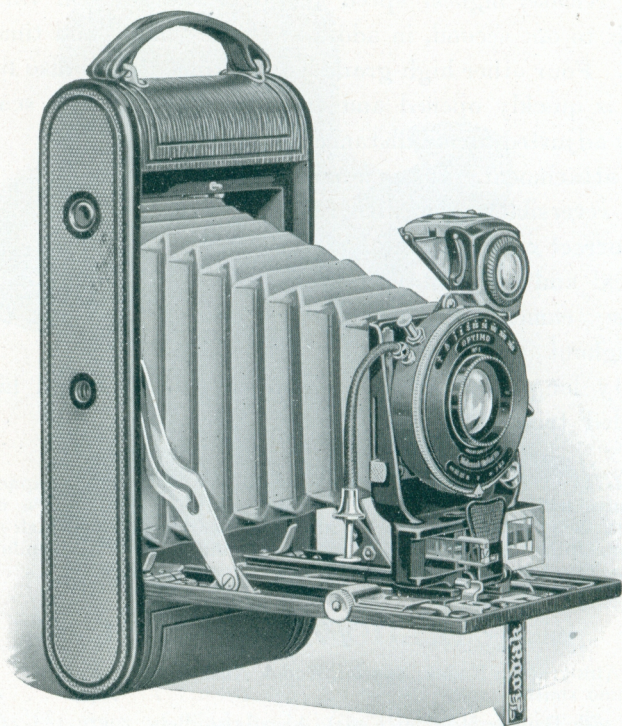


Details For rectangular pictures, $2\frac{1}{4} \times 3\frac{1}{4}$ inches. Capacity, 6 exposures without reloading. Size of Kodak, $1\frac{3}{8} \times 3\frac{3}{8} \times 6\frac{7}{8}$ inches. Weight, $26\frac{1}{2}$ ounces. Lens, Kodak Anastigmat, *f.* 6.3, $4\frac{3}{8}$ -inch focus. Shutter, Optimo with cable release. New, brilliant, reversible, collapsible finder. Two tripod sockets and new lever focusing device.

Price

No. 1 Autographic Kodak, <i>Special</i> , Kodak Anastigmat lens, <i>f.</i> 6.3 Optimo shutter	\$48.00
Ditto, with Bausch & Lomb Kodak Anastigmat lens, <i>f.</i> 6.3, $4\frac{3}{8}$ - inch focus	61.00
Ditto, with Bausch & Lomb Special, Anastigmat lens, <i>f.</i> 6.3, $4\frac{3}{8}$ -inch focus	48.00
Ditto, with Bausch & Lomb Tessar, Series IIb, <i>f.</i> 6.3, $4\frac{5}{16}$ - inch focus	75.00
Ditto, with Bausch & Lomb Tessar, Series Ic, <i>f.</i> 4.5, $3\frac{1}{2}$ - inch focus	77.00
Long Grain Leather, Velvet Lined Case, with strap	3.25
Autographic Film Cartridge, 6 exposures, $2\frac{1}{4} \times 3\frac{1}{4}$ (No. A120)	.20
Ditto, 2 exposures10
Kodak Portrait Attachment. (See page 39)50





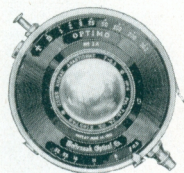
No. 1A *Autographic* KODAK, *Special*

THE No. 1A *Special* is typical of the best that is possible in efficiency, beauty in design and finish; in speed and accuracy in hand cameras. For a camera in the $2\frac{1}{2} \times 4\frac{1}{4}$ size, equipped with the finest Anastigmat lenses, and a shutter speed capable of working harmoniously with the high-speed lenses, it meets every amateur requirement for quick, accurate results.

It is beautifully finished and covered with the finest long grain calf, and the best materials are used throughout in its construction.

One of the features of this Kodak is the Kodak Range Finder, permitting accurate focusing without the necessity of estimating the distances. High-speed lenses require accurate focusing, and the Kodak Range Finder does this simply, quickly and efficiently.

The 1A *Special* offers a choice of the Kodak Anastigmat, *f.* 6.3 lens, and two other high-grade lenses, and is equipped with the Autographic feature. The shutter is the Optimo, operated either by cable or finger release, and in addition to the usual time and "bulb" actions, has eight variable speeds from one second to $\frac{1}{300}$ of a second.



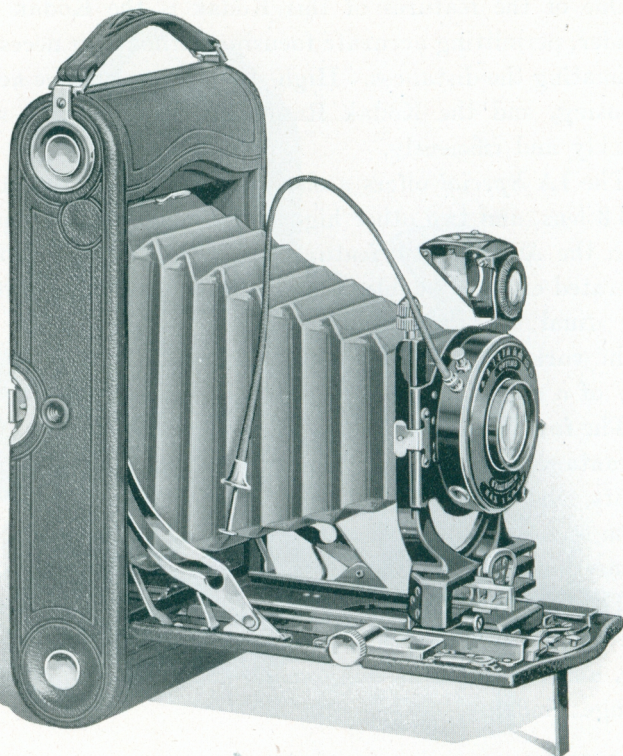
The fast lenses give the *Specials* a great advantage over the ordinary camera in dull lights, and the high-speed shutters make them second only to cameras having focal plane shutters for making good pictures of moving objects.

The camera has rising front; brilliant, collapsible, reversible finder with adjustable mask; rack and pinion for focusing, and the usual focusing scale, in addition to the Kodak Range Finder.

Details For rectangular pictures, $2\frac{1}{2} \times 4\frac{1}{4}$ inches. Capacity, 12 exposures without reloading. Size of Kodak, $1\frac{7}{8} \times 3\frac{3}{4} \times 8$ inches. Weight, 32 ounces. Lens, Kodak Anastigmat, *f.* 6.3, $5\frac{1}{16}$ -inch focus. Shutter, Optimo. Two tripod sockets. Brilliant, reversible, collapsible finder with adjustable mask. Rack and pinion for focusing.

Price

No. 1A Autographic Kodak, <i>Special</i> , with Kodak Anastigmat lens, <i>f.</i> 6.3, and Optimo shutter	\$53.50
Ditto, with Bausch & Lomb Kodak Anastigmat, <i>f.</i> 6.3 lens, $5\frac{1}{4}$ -inch focus	67.50
Ditto, with Bausch & Lomb Tessar, Series IIb Anastigmat lens, <i>f.</i> 6.3, $5\frac{3}{8}$ -inch focus	81.50
Grain Leather, Velvet Lined Case, with strap	4.00
Autographic Film Cartridge, 12 exposures (No. A 116)50
Ditto, 6 exposures25
Ditto, 2 exposures12
Kodak Portrait Attachment. (See page 39)50



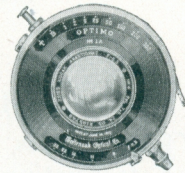
NOS. 3 AND 3A *Autographic* KODAKS, *Special*

THE 3A *Special* Kodak has attained and maintained its photographic leadership through perfection in its every detail. It is not merely optically efficient. It is a finished product—a product that shows in its refinements, in its niceties of construction, the master touch.

It has not merely high-speed lenses, but it makes the best use of those lenses because of the Kodak Range Finder, which provides simply and efficiently for accurate focusing—answering almost automatically the question: “How far off is the principal object?”

All of the lenses listed with these Kodaks are large (fast) and the focal length is long in proportion to the size of the picture, thus avoiding violent perspective.

It offers a choice of the Kodak Anastigmat, *f.* 6.3 lens, and two other high-grade lenses. The shutter is the Optimo, operated either by cable or finger release, and has variable speeds from one second to $\frac{1}{300}$ of a second. The camera is made of aluminum, has rising front, and the usual focusing scale in addition to the Kodak Range Finder. It is richly finished in genuine Persian Morocco, has bellows of selected black leather, and metal parts are highly nickeled.

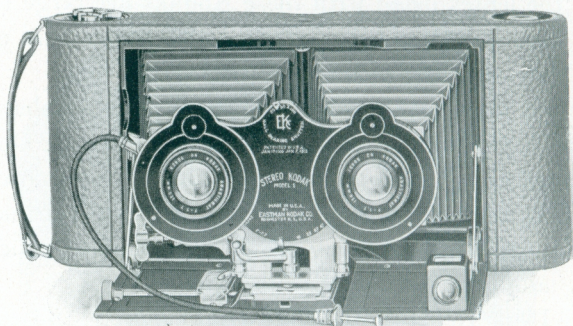


The No. 3 *Special* has the same lenses, shutter equipment and finish, but is not equipped with the Kodak Range Finder.

Details For rectangular pictures, No. 3, $3\frac{1}{4} \times 4\frac{1}{4}$ inches; No. 3A, $3\frac{1}{4} \times 5\frac{1}{2}$ inches. Capacity, No. 3, 12 exposures; No. 3A, 10 exposures without reloading. Size of Kodaks, No. 3, $1\frac{7}{8} \times 4\frac{1}{2} \times 8$ inches; No. 3A, $2 \times 4\frac{3}{4} \times 9\frac{1}{2}$ inches. Weight, No. 3, 32 ounces; No. 3A, 42 ounces. Lenses, Kodak Anastigmat, *f.* 6.3, focal length for No. 3, 5 inches; No. 3A, $6\frac{3}{4}$ inches. Shutters, Optimo with cable release. Two tripod sockets. Brilliant, collapsible, reversible view finder with adjustable window, also Kodak Range Finder for No. 3A. Brilliant, reversible finder with hood and spirit level for No. 3. Rack and pinion for focusing.

Prices

	No. 3 $3\frac{1}{4} \times 4\frac{1}{4}$	No. 3A $3\frac{1}{4} \times 5\frac{1}{2}$
Autographic Kodak, <i>Special</i> , Kodak Anastigmat lens, <i>f.</i> 6.3, and Optimo shutter	\$53.50	\$64.00
Ditto, with Bausch & Lomb Kodak Anastigmat lens, <i>f.</i> 6.3, $6\frac{3}{4}$ -inch focus for No. 3A	67.50	86.50
Ditto, with Bausch & Lomb Tessar Series IIb Anastigmat lens, <i>f.</i> 6.3, $6\frac{7}{8}$ -inch focus for No. 3A	81.50	105.50
Grain Leather, Velvet Lined Case, with strap	4.00	4.50
Combination Back	4.50	5.00
Double Glass Plate Holders, each	1.50	1.50
Autographic Film Cartridge, 12 exposures (No. A 118) for No. 3; 10 exposures (No. A 122) for No. 3A70	.70
Ditto, 6 exposures35	.40
Ditto, 2 exposures15	.20
Kodak Portrait Attachment. (See page 39)50	.50



STEREO KODAK

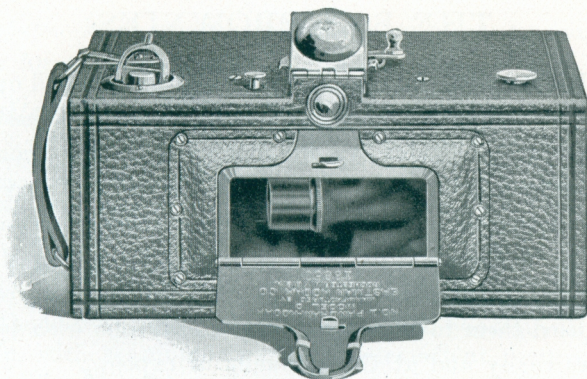
THERE is probably no branch of photography more fascinating than that afforded by the Stereo. Pictures which give the full effect of depth, roundness, distance and perspective can be obtained only by the use of twin lenses and when viewed through the stereoscope give the correct visual effect, just as we see with our eyes.

The Stereo Kodak is supplied with carefully matched Kodak Anastigmat, *f.7.7* lenses, of the best quality; the shutter is the Stereo No. 2 Ball Bearing for speeds of $\frac{1}{25}$, $\frac{1}{50}$ and $\frac{1}{100}$ also "bulb" and time exposures. The camera is equipped with rising front; rack and pinion for focusing, view finder and tripod socket. It is covered with fine seal grain leather and metal parts are in nickel and black enamel.

Details For $3\frac{1}{8} \times 3\frac{3}{8}$ Stereo pictures. Capacity, 6 exposures without reloading. Size of Kodak, $2\frac{3}{16} \times 4\frac{1}{4} \times 10\frac{1}{2}$ inches. Weight, 47½ ounces. Lenses, Kodak Anastigmat, *f.7.7*, 5⅛-inch focus. Shutter, Stereo No. 2 Ball Bearing, with cable release. Finder, tripod socket, rising front, rack and pinion for focusing and black leather bellows.

Price

Stereo Kodak, Model No. 1, Kodak Anastigmat lenses, <i>f.7.7</i> , and Stereo Ball Bearing shutter	\$53.50
Black Sole Leather Carrying Case	4.50
N. C. Film Cartridges, 6 exposures, for Stereo (No. 101)60
Ditto, 3 exposures for Stereo30
Stereo Kodak Self-transposing printing frame	3.00
Kodak Portrait Attachment50



THE PANORAM KODAKS

THERE are innumerable opportunities for unusual, pleasing pictorial effects which can be made with the Panoram Kodak. While they cannot be used successfully indoors, the No. 1, with a scope of 112 degrees; and the No. 4, embracing an angle of 142 degrees, will take beautiful panoramic pictures of outdoor groups, landscapes, mountain views and the like.

The Panorams use the regular daylight loading N. C. Kodak film; they are carefully made and have genuine leather coverings and nickeled fittings.

Details For rectangular pictures, No. 1, $2\frac{1}{4}$ x 7 inches; No. 4, $3\frac{1}{2}$ x 12 inches. Capacity, No. 1, 6 exposures; No. 4, 4 exposures without reloading. Size of Kodak, No. 1, $3\frac{3}{8}$ x $4\frac{3}{8}$ x $7\frac{3}{8}$ inches; No. 4, $4\frac{3}{4}$ x $5\frac{5}{8}$ x $10\frac{1}{8}$ inches. Weight, No. 1, 24 ounces; No. 4, 46 ounces. Lenses, specially selected as to quality and focal length. Shutter, Panoram. Two tripod sockets. Brilliant finder with hood. No. 1 uses No. 1 F. P. Kodak; No. 4, B. E. Film Cartridges, No. 4.

Prices

	No. 1	No. 4
Panoram Kodak	\$17.50	\$28.00
Black Sole Leather Carrying Case, with shoulder strap	4.50	6.75
N. C. Film Cartridge, No. 1, 6 exposures, $2\frac{1}{4}$ x 7 (No. 105); No. 4, 4 exposures, $3\frac{1}{2}$ x 12 (No. 103)40	.75
Ditto, 3 exposures20	
Ditto, 2 exposures45

THE BOX BROWNIES

THERE are thousands of Brownie enthusiasts all over the world, who are making splendid pictures with these little box cameras. The idea of simplicity and reliability combined in an inexpensive camera, has stood the test of years, and they have proved a delight to those who have used them.

While the Brownies are especially popular among children on account of their simplicity, the fact they are so practical has caused them to be taken up by adults who wish to make pictures easily and at the minimum of expense.



NO. 2 BROWNIE

NOS. 0 AND 2 BROWNIES

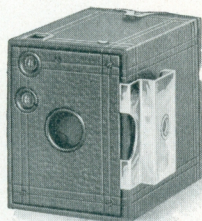
The No. 0 Brownie makes the popular Vest Pocket size pictures, $1\frac{5}{8} \times 2\frac{1}{2}$ inches, and the No. 2, $2\frac{1}{4} \times 3\frac{1}{4}$ pictures. Both cameras are accurate, reliable, efficient and economical to operate and anybody can make good pictures with them from the start. They have the automatic shutter for snap-shots and time exposures; the No. 0 with one stop and No. 2 with

three stops. Each has carefully tested meniscus lens and view finders for vertical and horizontal exposures.

Details Nos. 0 and 2 Brownies. For rectangular pictures, No. 0, $1\frac{1}{8} \times 2\frac{1}{2}$ inches; No. 2, $2\frac{1}{4} \times 3\frac{1}{4}$ inches. Capacity, No. 0, 8 exposures; No. 2, 6 exposures without reloading. Size of camera, No. 0, $2\frac{3}{8} \times 3\frac{3}{8} \times 4\frac{1}{8}$ inches; No. 2, $3\frac{1}{4} \times 4 \times 5\frac{7}{8}$ inches. Weight, No. 0, 8 ounces; No. 2, 13 ounces. Lenses, meniscus. Shutters, Eastman Rotary. Two finders.

NOS. 2A AND 3 BROWNIES

All the box Brownies are fixed focus and consequently anyone can, with reasonable care, make excellent pictures with them. The No. 2A makes pictures $2\frac{1}{2} \times 4\frac{1}{4}$ inches, while the No. 3 makes $3\frac{1}{4} \times 4\frac{1}{4}$ pictures. Each has carefully tested meniscus achromatic lens. Eastman Rotary shutter with three stops, two view finders, and the No. 3 is supplied with two tripod sockets. Both cameras are covered with durable imitation leather covering, with metal parts nickeled, and have the day-light-all-the-way feature of the Kodaks.



SHOWING BROWNIE TRIPOD ADAPTER AS USED ON NO. 0 BROWNIE

Details Nos. 2A and 3 Brownies. For rectangular pictures, No. 2A, $2\frac{1}{2} \times 4\frac{1}{4}$ inches; No. 3, $3\frac{1}{4} \times 4\frac{1}{4}$ inches. Capacity, 12 exposures without reloading. Size of camera, No. 2A, $3\frac{1}{16} \times 5\frac{1}{8} \times 6\frac{1}{8}$ inches; No. 3, $4\frac{3}{8} \times 5\frac{1}{8} \times 6\frac{1}{8}$ inches. Weight, No. 2A, 21 ounces; No. 3, 24 ounces. Lenses, meniscus achromatic. Shutters, Eastman Rotary with three stops. Two finders.

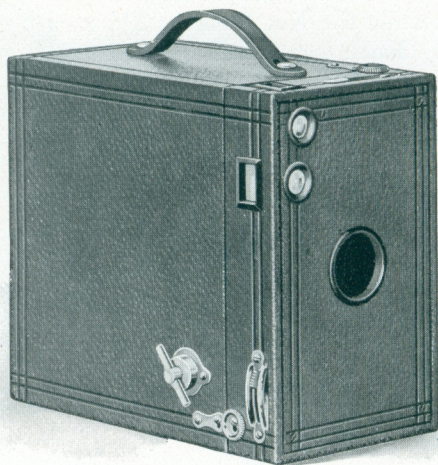
Prices

	No. 0	No. 2	No. 2A	No. 3
Nos. 0 and 2 Brownie Cameras, meniscus lenses, Eastman Rotary shutters	\$2.15	\$3.00		
Nos. 2A and 3 Brownie Cameras, meniscus achromatic lenses, Eastman Rotary shutters			\$3.75	\$4.80
Brownie Carrying Case85	1.10	1.25	1.35
Brownie Tripod Adapter25	.25	.25	
N. C. Film Cartridge, 8 exposures, $1\frac{1}{8} \times 2\frac{1}{2}$ (No. 127) for No. 020			
Ditto, 6 exposures, $2\frac{1}{4} \times 3\frac{1}{4}$ (No. 120) for No. 220		
Ditto, 12 exposures, $2\frac{1}{2} \times 4\frac{1}{4}$ (No. 116) for No. 2A; $3\frac{1}{4} \times 4\frac{1}{4}$ (No. 124) for No. 350	.70
Ditto, 6 exposures25	.35
Kodak Portrait Attachment. (See page 39)50	.50	.50	.50
Developing and Printing Outfit. (See page 44)	1.00	1.75	1.75	1.75

No. 2C BROWNIE

BEHIND the Brownie name stand years of practical experience in the best, most usable and most serviceable camera construction. And so, when it became evident that the $2\frac{7}{8} \times 4\frac{7}{8}$ picture was to be one of the most popular amateur sizes, the No. 2C size was added to the box Brownie line.

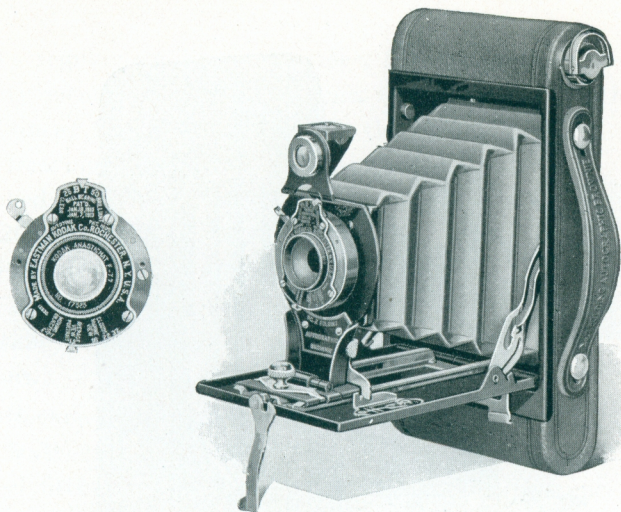
The 2C has slightly more picture area than the No. 3 size, it fits the view, and its shape is adaptable to almost any composition. But, like the other Brownies, this new camera combines simplicity and reliability with low cost.



Details For rectangular pictures, $2\frac{7}{8} \times 4\frac{7}{8}$ inches. Capacity, 10 exposures without reloading. Size of camera, $3\frac{7}{8} \times 6\frac{1}{4} \times 7\frac{1}{4}$ inches. Weight, 27 ounces. Lens, meniscus achromatic. Shutter, Eastman Rotary, with 3 stops. Two view finders. Two tripod sockets. Covered with durable imitation leather.

Price

No. 2C Brownie, with meniscus achromatic lens and Eastman Rotary shutter	\$4.80
Brownie Carrying Case	1.35
N. C. Film Cartridges, 10 exposures (No. 130)60
Ditto, 6 exposures35
Kodak Portrait Attachment. (See page 39)50



No. 2 FOLDING *Autographic* BROWNIE

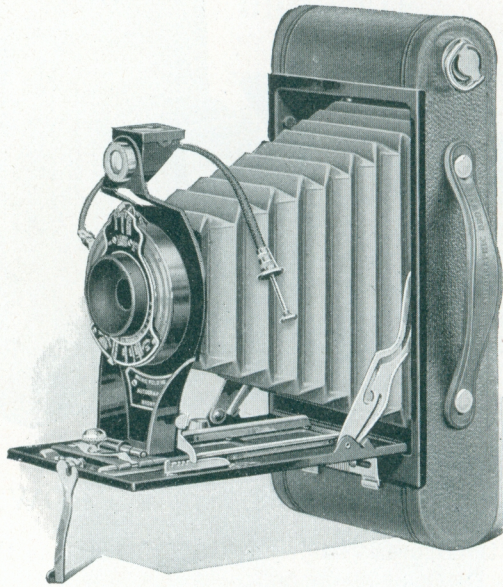
THIS little Brownie has a host of friends; has the autographic feature, round ends; is efficient, yet simple to operate. It loads in daylight with Autographic Film Cartridges of six exposures. Fitted with meniscus achromatic or Rapid Rectilinear lens as desired. Has Kodak Ball Bearing shutter with variable snap-shot speeds of $\frac{1}{25}$ and $\frac{1}{50}$ of a second; also time and "bulb" actions, and is equipped with Kodak Autotime Scale.

Has reversible finder, automatic focusing lock, two tripod sockets; is made of metal, covered with a fine imitation leather, and carefully finished in every detail.

Details For rectangular pictures, $2\frac{1}{4} \times 3\frac{1}{4}$ inches. Capacity, 6 exposures without reloading. Size of camera, $1\frac{1}{4} \times 3\frac{1}{8} \times 6\frac{1}{2}$ inches. Weight, 19 ounces. Lens, meniscus achromatic. Also supplied with Rapid Rectilinear lens, if desired. Shutter, Kodak Ball Bearing, equipped with Kodak Autotime Scale. Reversible finder, two tripod sockets, automatic focusing lock, black leather bellows.

Price

No. 2 Folding Autographic Brownie, meniscus achromatic lens and Kodak Ball Bearing shutter	\$ 8.60
Ditto, with Rapid Rectilinear lens	10.25
Carrying Case for No. 2 Folding Autographic Brownie	1.40
Autographic Film Cartridge, 6 exposures, $2\frac{1}{4} \times 3\frac{1}{4}$ (No. A 120).20
Ditto, 2 exposures10
Kodak Portrait Attachment. (See page 39)50



NOS. 2A AND 2C
FOLDING *Autographic* BROWNIES

THESE two Folding Brownies are identical except in the sizes of the pictures they make. Both are of the same relative compactness; the same simplicity and dependability that have always characterized the Brownie line.

The autographic feature permitting one to date and title the negatives when the exposure is made adds just one more touch of refinement and with the ease and simplicity of operation, these little cameras answer every purpose for the average amateur in the taking of good pictures.

The 2A makes pictures $2\frac{1}{2} \times 4\frac{1}{4}$ inches, loading with twelve, six or two exposure Autographic Film Cartridges (No. A 116), while the No. 2C picture is $2\frac{7}{8} \times 4\frac{7}{8}$ inches, in cartridges of ten, six and two exposures (No. A 130).

The regular equipment includes, for either camera, a fine quality meniscus achromatic lens, or if desired, the Rapid Rectilinear lens. The shutter is the Kodak Ball Bearing, automatic in action; the No. 2A supplied with finger release only, while the No. 2C has both finger and cable release. The snap-shot speeds, however, are the same for both cameras, $\frac{1}{25}$, $\frac{1}{50}$ and $\frac{1}{100}$ of a second in addition to the regular time and "bulb" actions.

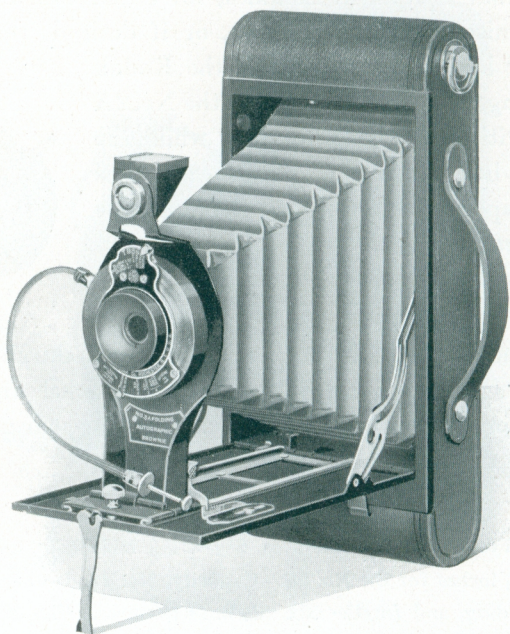


Both cameras are made of metal covered with durable imitation leather; have black leather bellows; nickel and black enamel fittings; are small in size, neat in appearance, and thoroughly efficient.

Details For rectangular pictures, $2\frac{1}{2} \times 4\frac{1}{4}$ inches for the No. 2A, and $2\frac{7}{8} \times 4\frac{7}{8}$ inches for the No. 2C. Capacity, No. 2A, twelve exposures without reloading, and for the No. 2C, ten exposures. Size of cameras, No. 2A, $1\frac{7}{16} \times 3\frac{3}{8} \times 7\frac{7}{8}$ inches; No. 2C, $1\frac{3}{4} \times 3\frac{3}{4} \times 8\frac{11}{16}$ inches. Weight, No. 2A, 24 ounces; No. 2C, 25 ounces. Lenses, meniscus achromatic, or, if desired, the Rapid Rectilinear. Shutters, Kodak Ball Bearing, equipped with Autotime Scale. Reversible finders, two tripod sockets, automatic focusing locks, and black leather bellows.

Prices

	No. 2A	No. 2C
Folding Autographic Brownies, with meniscus achromatic lenses and Kodak Ball Bearing shutters	$2\frac{1}{2} \times 4\frac{1}{4}$	$2\frac{7}{8} \times 4\frac{7}{8}$
lenses and Kodak Ball Bearing shutters	\$ 9.75	\$12.50
Ditto, with Rapid Rectilinear lenses	11.75	14.50
Carrying Case for Folding Autographic Brownies	1.50	1.55
Autographic Film Cartridges, 12 exposures, $2\frac{1}{2} \times 4\frac{1}{4}$ (No. A 116); 10 exposures, $2\frac{7}{8} \times 4\frac{7}{8}$ (No. A 130)50	.60
Ditto, 6 exposures25	.35
Ditto, 2 exposures12	.15
Kodak Portrait Attachment. (See page 39)50	.50



No. 3A FOLDING *Autographic* BROWNIE

LIKE all the other Folding Brownies, this camera has the autographic feature for the recording of the dates and titles on the film; is quick to operate, may be loaded almost instantly and is cleverly constructed and well made throughout.

The 3A is a thoroughly efficient camera and is sure to delight anyone who desires to make pictures the post-card size ($3\frac{1}{4} \times 5\frac{1}{2}$ inches). There is a characteristic Brownie simplicity about it, and with the round ends and its present compactness, may be carried on any occasion, without inconvenience.

It has a fine quality meniscus achromatic lens, or if desired, will be equipped with Rapid Rectilinear lens. The shutter is the Brownie Ball Bearing with cable release; has time and "bulb" actions and snap-shot speeds of $\frac{1}{25}$, $\frac{1}{50}$ and $\frac{1}{100}$ of a second, and is supplied with Kodak Autotime Scale as an aid to correct exposure.

The camera loads in daylight with ten, six or two-exposure Autographic Film Cartridges (No. A 122); has an automatic focusing lock which permits the quick focusing of objects at any distance. Has reversible finder, two tripod sockets, carrying handle; is constructed of metal, covered with a fine quality imitation leather, bellows of black leather, nickel and black enamel fittings and is carefully made and finished throughout. The No. 3A Folding Autographic Brownie is so simple to operate that anyone, without experience, can secure good results with it from the very start.



Details For rectangular pictures, $3\frac{1}{4} \times 5\frac{1}{2}$ inches. Capacity, 10 exposures without reloading. Size of camera, $1\frac{1}{8} \times 4\frac{1}{16} \times 9\frac{1}{16}$ inches. Weight, 38 ounces. Lens, meniscus achromatic. Also supplied with Rapid Rectilinear lens if desired. Shutter, Brownie Ball Bearing with cable release, also equipped with Kodak Autotime Scale. Reversible finder, two tripod sockets, automatic focusing lock, black leather bellows.

Price

No. 3A Folding Autographic Brownie, meniscus achromatic lens and Brownie Ball Bearing shutter	\$13.50
Ditto, with Rapid Rectilinear lens	16.00
Carrying Case for No. 3A Folding Autographic Brownie	1.65
Autographic Film Cartridge, 10 exposures, $3\frac{1}{4} \times 5\frac{1}{2}$ (No. A 122)70
Ditto, 6 exposures40
Ditto, 2 exposures20
Kodak Portrait Attachment. (See page 39)50

KODAK BALL BEARING SHUTTER

THIS shutter is automatic in its action and does not require setting. Its leaves work on ball bearings, giving it a smooth and reliable action, and as they open and close in a star-shaped aperture, the maximum of light is admitted. It is operated by cable release or finger release and has the iris diaphragm.

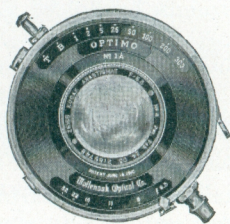
The No. 0 Ball Bearing shutter as supplied with the Vest Pocket Kodak and No. 2 Folding Brownie, operates with finger release only, has speeds of $\frac{1}{25}$ and $\frac{1}{50}$ of a second and Autotime Scale. Fitted to the No. 1 Kodak Junior with meniscus achromatic and Rapid Rectilinear lenses, the No. 0 has cable release and not Autotime Scale.

The No. 1 shutter has variable indicated speeds of $\frac{1}{25}$, $\frac{1}{50}$ and $\frac{1}{100}$ of a second, and is regularly fitted to the No. 1A Kodak Junior, No. 2A Folding Brownie and Nos. 1A and 3 Kodaks, and with No. 1 Kodak Junior, when equipped with *f.* 7.7 lens.

The No. 2 shutter is fitted to Nos. 2C and 3A Kodak Juniors, Nos. 2C and 3A Folding Brownies and No. 3A Kodak. This has the same speeds as the No. 1 shutter but is larger. All have "bulb" and time actions.

OPTIMO SHUTTER

THE Optimo is one of the best and most accurate shutters for use with fast Anastigmat lenses. It has remarkable precision, smoothness, ease in action and sufficient speed to photograph rapidly moving objects. The Optimo is now supplied with all the *Specials*. In making an exposure, its five leaves revolve—opening and closing as well—in a star-shaped aperture. In addition to the usual "bulb" and time actions, the Optimo has eight indicated speeds varying from one second to $\frac{1}{300}$ of a second. This thoroughly reliable shutter is of the setting type; has cable and finger release, and is beautifully finished in nickel and black enamel, with the engraving in gold.



KODAK LENSES

THE meniscus achromatic and Rapid Rectilinear lenses supplied with the regular models of the Kodak and Brownie Cameras, are perfectly adapted to the everyday requirements of the average amateur, producing exceedingly good results under all normal conditions of light. They are the best lenses of their respective types that can be secured.

Since the introduction of the Kodak Anastigmat, *f. 7.7* lenses, the use of Anastigmats has become very general. These *f. 7.7* lenses are inexpensive, but they produce Anastigmat results. They are speedier than the fastest rectilinear lenses; in quality, depth, definition (sharpness) and flatness of field, they equal the best Anastigmats made. Their popularity is responsible for the Kodak Anastigmat, *f. 6.3* lenses, which have the same high quality, and still greater speed.

For Kodak use, you cannot obtain better lenses than the Kodak Anastigmats, at any price.

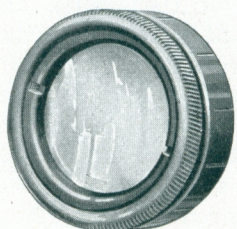
AUTOGRAPHIC BACKS

THE Autographic feature may be added to the Kodak not originally equipped with this improvement. There is no extra charge for the Autographic Film and with the Autographic feature incorporated in the old Kodak, one may keep an authentic record of each exposure on the negative, to determine at any time, when and where each picture was made.

Autographic backs will be supplied for the Kodaks listed, at the following prices:

No. 1 Kodak Junior	\$2.50
No. 1A Kodak Junior	3.00
No. 1A Folding Pocket Kodak, Rapid Rectilinear Type	3.50
No. 3 Folding Pocket Kodak	3.50
No. 3A Folding Pocket Kodak	3.75
No. 4 Folding Pocket Kodak	4.00
No. 4A Folding Kodak	4.50
No. 1A Special Kodak	4.00
No. 3 Special Kodak	4.00
No. 3A Special Kodak	4.25

KODAK PORTRAIT ATTACHMENT



EVERYTHING has its limitations. Pocket cameras are not made to work close up to the subject. If they were so made they would have to have a long bellows draw, which would mean a long front board, or an extension to the front board, all of which would mean extra bulk and they simply wouldn't be pocket cameras any more.

This is where the Kodak Portrait Attachment comes in. It so alters the focus of the lens that the camera can be placed close to the subject and a large *image* (in proportion to the size of the picture) secured. It is invaluable on the hand camera—not merely for making portraits, but for photographing any small objects, such as flowers, or fruits.

The attachment is simply an extra lens, which fits over the barrel of the regular lens. This does not alter the exposure nor affect the operation of the instrument in any way, except to make the lens cut sharply when close to the subject, thereby giving a larger image.

Please order by number, or if required for older models or cameras with special equipments, specify shutter and size of camera.



MADE WITH KODAK AND KODAK
PORTRAIT ATTACHMENT

Prices—KODAK PORTRAIT ATTACHMENTS

No. 1.	For Nos. 0 and 2 Brownies, and Vest Pocket Autographic Kodak with single lens	\$0.50
No. 2.	For No. 2A Brownie	.50
No. 3.	For No. 1A Autographic Kodak Junior, both single and double lenses; Nos. 1A and 3 Autographic Kodaks, with double lenses; No. 2A Folding Autographic Brownie, both single and double lens, and No. 1 Kodak Junior with Kodak Anastigmat, <i>f.7.7</i> lens	.50
No. 4.	For Nos. 2C and 3 Brownies	.50
No. 5.	For Nos. 2C and 3A Autographic Kodak Juniors, both single and double lenses, Nos. 2C and 3A Folding Autographic Brownies, both single and double lenses and No. 3A Autographic Kodak	.50
No. 6.	For Nos. 1A and 3 Autographic Kodak, <i>Special</i> , Nos. 1A and 3 Autographic Kodaks with Kodak Anastigmat <i>f.7.7</i> lens, and No. 1 Autographic Kodak, <i>Special</i>	.50
No. 7.	For No. 3A Autographic Kodak, <i>Special</i> , No. 3A Autographic Kodak and Nos. 2C and 3A Juniors with Kodak Anastigmat, <i>f.7.7</i> lenses, and Stereo Kodak, Model 1	.50
No. 8.	For No. 1 Autographic Kodak Junior, both single and double lenses, Vest Pocket Autographic Kodak, <i>Special</i> , Vest Pocket (regular) with Rapid Rectilinear lens, and No. 2 Folding Autographic Brownie, both single and double lenses	.50
No. 9.	For No. 3 Autographic Kodak with B. & L. Automatic shutter	.50
No. 13.	For No. 1A Autographic Kodak Junior, with Kodak Anastigmat lens, <i>f.7.7</i> (with engraving on front of lens barrel)	.50

KODAK SKY FILTERS AND COLOR FILTERS

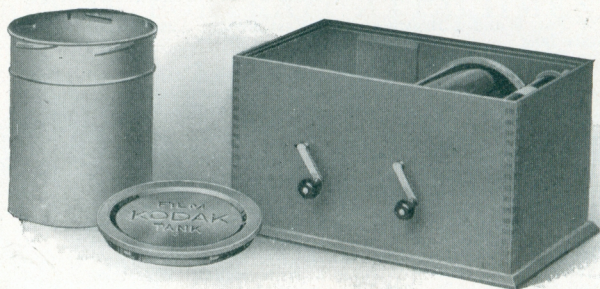
The Sky Filter is intended to equalize the great difference of light between the sky and the foreground in landscape photography. Only the upper half of the filter is stained a yellow color to relieve the brightness from the sky, while the lower half of the filter, being colorless, permits a normal exposure for the foreground.

The Kodak Color Filters are of great value in outdoor photography, and for all subjects embracing colors which act weakly on the sensitive film, as they hold back the strong blue and violet rays, affording the weaker colors time to record.

The Kodak Sky Filters and Color Filters are mounted in the same manner as the Kodak Portrait Attachments.

Prices—KODAK SKY FILTERS AND COLOR FILTERS

No. 1.	For Vest Pocket, Autographic Kodak with single lens; Nos. 0 and 2 Brownies	\$0.50
No. 2.	For No. 2A Brownie	.50
No. 3.	For No. 1A Autographic Kodak Junior, both single and double lens; Nos. 1A and 3 Autographic Kodaks, with double lenses; No. 2A Folding Autographic Brownie, both single and double lens, and No. 1 Kodak Junior with Kodak Anastigmat, <i>f.7.7</i> lens	.75
No. 4.	For Nos. 2C and 3 Brownies	.75
No. 5.	For Nos. 2C and 3A Autographic Kodak Juniors, both single and double lenses, Nos. 2C and 3A Folding Autographic Brownies, both single and double lenses and No. 3 Autographic Kodak	1.00
No. 6.	For Nos. 1A and 3 Autographic Kodaks, <i>Special</i> , Nos. 1A and 3 Autographic Kodaks with Kodak Anastigmat <i>f.7.7</i> lens, and No. 1 Autographic Kodak, <i>Special</i>	.75
No. 7.	For No. 3A Autographic Kodak, <i>Special</i> , No. 3A Autographic Kodak and Nos. 2C and 3A Juniors with Kodak Anastigmat, <i>f.7.7</i> lenses and Stereo Kodak, Model 1	1.00
No. 8.	For No. 1 Autographic Kodak Junior, both single and double lenses, Vest Pocket Autographic Kodak, <i>Special</i> , Vest Pocket (regular) with Rapid Rectilinear lens, and No. 2 Folding Autographic Brownie, both single and double lenses	.50
No. 9.	For No. 3 Autographic Kodak with B. & L. Automatic shutter	.50
No. 13.	For No. 1A Autographic Kodak Junior, with Kodak Anastigmat lens, <i>f.7.7</i> (with engraving on front of lens barrel)	.75



KODAK FILM TANK

ANYBODY can get as correctly developed negatives by developing films in the Kodak Film Tank as an expert can by any other method of development. All that is necessary is to use the developer recommended for use in the tank, and develop for the length of time the tank instructions require for the temperature at which the developer is used. And experience has demonstrated that the tank method of development gets the utmost out of correctly exposed, under-exposed and over-exposed negatives.

It requires experience to know when to stop development by the tray method, but with the tank it is not a matter of guess work, for the experience is in the tank. By consulting the table of temperatures you will know how long your film should be developed. But one of the greatest advantages of the tank is that it may be used in broad daylight, eliminating the dark room entirely.

The Kodak Film Tank consists of a winding box, a light-proof apron, and a heavily nicked brass solution cup with cover. In the Brownie Film Tank, however, no cover is necessary as the film roll itself is turned. All articles can be packed in the box, making the entire outfit self contained.

The film to be developed is placed upon a reel in the winding box, the cover is placed on the box and the film is wound around an axis in combination with the apron, in such fashion that, when completely wound, the apron protects the film effectually from

light, and may be removed from the winding box safely at any time. It is then lowered into the cup of developer, the cover attached and the film left to develop for about twenty minutes. After development the film is removed for fixing.

Especial attention is called to the 3½-inch size, for the development of the 2C size films.

Those who wish to develop more than one roll at a time can do so without purchasing extra tanks complete, by securing duplicating outfits as listed below.

Prices

Brownie Kodak Film Tank, for use with No. 1, No. 2 and No. 2 Folding Pocket Brownie cartridges, complete	\$3.00
Cover for same25
Spool Adapter, for Vest Pocket Kodak Film10
Vest Pocket Kodak Film Tank, for Vest Pocket cartridges, complete	3.00
2½-inch Kodak Film Tank, for use with all Kodak or Brownie cartridges having a film width 2½ inches or less, complete	4.00
3½-inch Kodak Film Tank, for use with all Kodak and Brownie cartridges having a film width of 3½ inches or less, complete	5.50
5-inch Kodak Film Tank, for use with all Kodak and Brownie cartridges having a film width of 5 inches or less, complete	6.50
7-inch Kodak Film Tank, for use with No. 5 Cartridge Kodak or shorter film cartridges, complete	8.00
Duplicating Outfit, consisting of one solution cup, one transferring reel, and one apron, for Brownie Kodak Film Tank	1.40
Ditto, for Vest Pocket Film Tank	1.40
Ditto, for 2½-inch Kodak Film Tank	2.00
Ditto, for 3½-inch Kodak Film Tank	2.75
Ditto, for 5-inch Kodak Film Tank	3.25
Ditto, for 7-inch Kodak Film Tank	4.00
*Kodak Tank Developer Powders for Brownie Kodak Film Tank, per package, ½ dozen15
Ditto, for Vest Pocket Tank15
Ditto, for 2½-inch tank, per package, ½ dozen20
Ditto, for 3½-inch tank, per package, ½ dozen20
Ditto, for 5-inch tank, per package, ½ dozen25
Ditto, for 7-inch tank, per package, ½ dozen25
*Kodak Acid Fixing Powder, per ¼-pound package10
Ditto, per ½-pound package15
Ditto, per 1-pound package25

*Prices are subject to change without notice.

No. 2 BROWNIE DEVELOPING BOX

THE Brownie Developing Box is a simplified and modified form of the Kodak Film Tank, offering the same assurance of perfectly developed film, and at the same time is so simple that any boy or girl can readily understand and operate it.

It consists of a metal box with cover, just long enough to accommodate a roll of No. 1 or No. 2 Brownie Film in one loop.

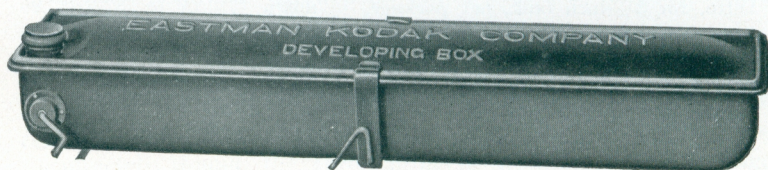
To develop, the roll of film is inserted in the spool carrier, and by means of a cord and winding shaft the film is unrolled and carried around a roller bearing, thus exposing the film to the action of the developer.

Before unrolling the film, the developer is poured in the box, and the cover put in place; all these operations being performed in daylight. The film is then unrolled by turning the crank, when the box is rocked on its standard for six minutes. The developer is then poured off and box filled with water to wash out developer, after which film is removed and fixed in daylight.

It provides an excellent means for those who have Nos. 0, 1 or 2 Brownie Cameras, of developing their films simply and accurately.

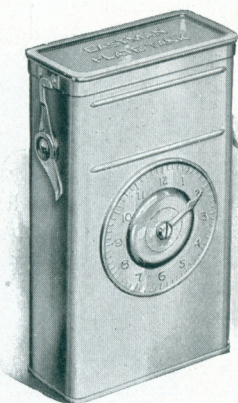
Price

No. 2 Brownie Developing Box	\$2.00
Brownie Developing Box Powders, per package of 615
Kodak Acid Fixing Powders, ½-lb. package15
Ditto, ¼-pound package10



EASTMAN PLATE TANK

WHAT the film tank has done for films, the plate tank does for plates. The idea of the two tanks is based upon the same time and temperature system of development, with, of course, such differences in actual construction of the tanks as are required by the physical differences between films and plates. And as plates must be unloaded in a dark room, the plate tank cannot offer the advantage of daylight quite all the way, but it takes only a few moments in the dark room to load this tank, after which it may be brought out into any light for development.



The device consists of a metal solution cup with cover, a cage for holding 12 or less plates, and a loading fixture for loading the plates in the cage.

The exposed plates are loaded into the cage and placed in the tank, which has been filled with developer, in the dark room and the tank cover fastened in place. On the front of the tank is a dial for registering time. Development is allowed to continue for fifteen minutes, the tank being reversed several times. After development, the developer is washed out of the plates, and the fixing and washing are done in the usual manner.

Price

Eastman Plate Tank, for 4x5, 3¼x5½, and smaller plates, includes solution cup, plate cage, loading fixture and adjustable kit	\$4.00
Ditto, 5 x 7, without kit	6.00
Adjustable Kit, for 4 x 5 or 3¼ x 5½ tank, to take smaller plates	.60
Separate Kits, for 5 x 7 tank, to take 3¼ x 5½, 4¼ x 6½ or 4¾ x 6½ plates, each	1.00
Metal Insert, for 5 x 7 tank, to take 4 x 5 plates	.25
*Eastman Plate Tank Developer Powders, for 4 x 5 tank, per package, ½ dozen	.20
*Ditto, for 5 x 7 tank, per package, ½ dozen	.40
Kodak Acid Fixing Powder, per 1-pound package	.25
Ditto, per ½-pound package	.15

*Prices are subject to change without notice.

DEVELOPING AND PRINTING OUTFITS

FOR those who wish to develop by the dark room method we offer complete developing and printing outfits containing everything necessary for the work. By combining a variety of different articles and making up the outfits in large quantities, we furnish them at a much lower price than if the articles were purchased separately. The Eastman 3A Outfit contains every requisite for finishing twenty-four $3\frac{1}{4} \times 5\frac{1}{2}$ or smaller pictures, and includes the following:

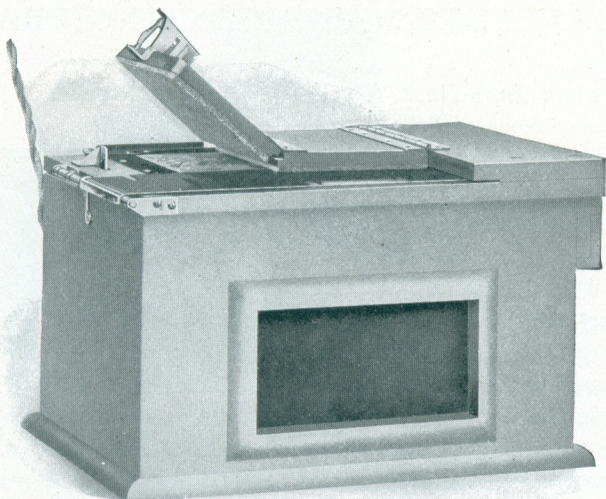
One Kodak Candle Lamp	\$0.25
One Printing Frame30
One Glass for Frame05
One 4-ounce Graduate20
One Stirring Rod05
Four Developing Trays40
Five tubes Eastman Special Developer25
One-half pound Kodak Acid Fixing Powder15
Two dozen $3\frac{1}{4} \times 5\frac{1}{2}$ Velox Paper30
Two Eastman M. Q. Powders, for developing Velox10
Instruction Book (free)	
	\$2.05

EASTMAN 3A OUTFIT, COMPLETE, NEATLY PACKED, \$1.75

EASTMAN A B C OUTFIT, similar to above but providing for 4 x 5 or smaller pictures \$1.75

No. 0 BROWNIE Developing and Printing Outfit, complete, for developing and printing 24 pictures $1\frac{5}{8} \times 2\frac{1}{2}$. Price, complete 1.00





KODAK AMATEUR PRINTER

THE Printer consists of a box with a removable top, and in it a glass window through which the printing is done. Prints may be made with white margins, any size from $1\frac{5}{8} \times 2\frac{1}{2}$ to $4 \times 5\frac{1}{2}$ inches, by a simple automatic masking device, which holds the negatives firmly until released. Within the box is a small red electric bulb to permit the adjustment of negative and paper, and provision is made for a 60 Watt Mazda lamp, which is automatically turned on when the hinged frame is closed to make the exposure.

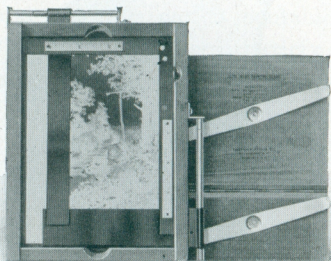
In the side of the box is a removable window, covered with orange fabric, serving as a dark-room lamp for developing-out and bromide papers.

It is supplied complete, without lamp, but including $5\frac{1}{2}$ feet of electric light cord and plug.

The Kodak Amateur Printer \$7.50

KODAK AUTO-MASK PRINTING FRAME

The new Auto-Mask is the most convenient and useful thing in printing frames that has yet been produced. It is adaptable to the printing of negatives of any amateur size, from 4 x 5, 3 $\frac{1}{4}$ x 5 $\frac{1}{2}$ and smaller, using the same simple masking device employed on Kodak Amateur Printer. The negative is held firmly in place by the mask and is as readily released, when desired, by a slight pressure on the thumb lever.

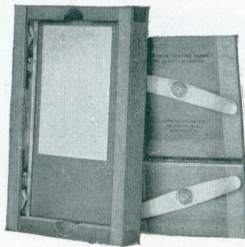


Any number of uniformly masked prints may be made without changing the position of the negative, and if desired, prints may be so made that white space is left at the side or bottom for writing as, for example, with post-cards. The graduated scales attached to the stationary guides, aid in sizing and holding exact dimensions of mask openings.

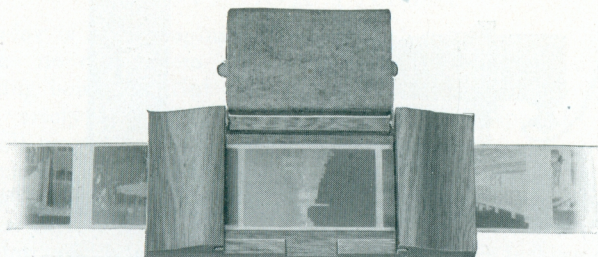
Kodak Auto-mask Printing Frame \$1.25

MASKIT PRINTING FRAME

The Kodak Maskit Printing Frame is designed to overcome the difficulty of the negative and mask slipping on the glass, and to secure prints with a uniform white margin. Both negative and mask are held firmly, thus obviating the necessity of gumming.



Kodak Maskit, 3 $\frac{1}{4}$ x 4 $\frac{1}{4}$, opens two-thirds	\$0.45
Kodak Maskit, 3 $\frac{1}{4}$ x 5 $\frac{1}{2}$, opens two-thirds	.50
Kodak Maskit, 5 x 7, opens two-thirds	.60



KODAK SERIAL PRINTING FRAME No. 2

The Serial Printing Frame will be found a great convenience for printing from Vest Pocket Kodak negatives. After development, the film is left in a continuous strip (without cutting), and the frame is so designed as to permit the film to slide easily through the frame from exposure to exposure. The film and paper are firmly held during printing, by a tension spring.

Kodak Serial Printing Frame No. 2 for V. P. negatives only . . . \$0.65

EASTMAN AND BROWNIE PRINTING FRAMES

Eastman 3 1/2 x 12, for No. 4 Panoram Kodak, opens in three sections	\$0.90	Brownie Printing Frame, No. 2, for 2 1/4 x 3 1/4 Developing paper only	\$0.20
Eastman 2 1/4 x 7, for No. 1 Panoram Kodak, opens in two sections45	Ditto, 3 1/4 x 4 1/4, opens two-thirds, each30
Brownie Printing Frame, No. 1, for 2 1/4 x 2 1/4 Developing paper only20	Ditto, 3 1/4 x 5 1/2, for films, opens two-thirds30
		Ditto, for plates35
		Eastman 4 x 5, opens two-thirds30
		Eastman 5 x 7, opens two-thirds40

KODALOID PRINTING MASKS

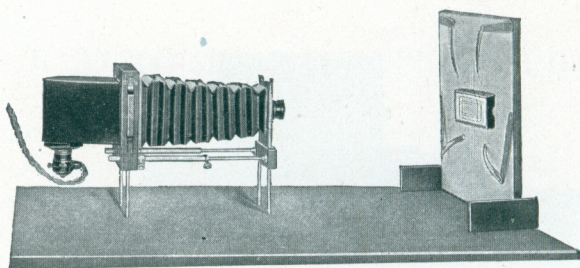
These transparent, orange color masks are intended for use with Maskit Printing Frames. Supplied in sets of three, each with different size opening.

Per set of 3, 3 1/4 x 4 1/4 \$0.25 Per set of 3, 3 1/4 x 5 1/2 \$0.30 Per set of 3, 5 x 7 \$0.40
 Black paper masks, same sizes as above Price, per set of 3, \$0.12.

EASTMAN PRINTING MASKS

Made of transparent Kodaloid, to fit the regular Printing Frames, and offering various sizes of openings.

For 3A Frames, 8 masking sizes, each	\$0.06
For 4 x 5 Frames, 7 masking sizes, each06
For 5 x 7 Frames, 6 masking sizes, each10



KODAK ENLARGING OUTFIT

THE Kodak Enlarging Outfit is just what the amateur needs who is doing his own enlarging. Although it is small in size and so compact as to be easily stored, it is a thoroughly practical instrument and capable of almost unlimited results.

Films and plates of any size up to 4 x 6 inches, may be enlarged up to the size of the easel (14x17 inches), or even larger if desired.

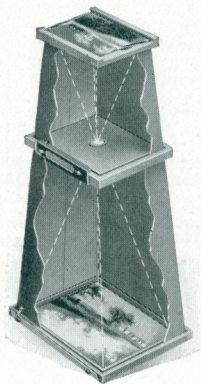
The outfit includes Enlarging Camera, lens and diaphragm, (largest stop U. S. 4) easel, lamphousing, light cord and plug, but does not include the 60 Watt Mazda electric light bulb.

Kodak Enlarging Outfit	\$19.00
Lantern Slide Block	1.00
Portrait Attachment No. 550

BROWNIE ENLARGING CAMERA

The Brownie Enlarging Camera consists of a light-tight cone, made in two sections, with an attachment at the small end to hold the negative, and another at the large end for the paper. The lens is supported between negative and paper at just the proper focal distance.

The cameras, with the exception of the No. 2 Brownie Post-card, are collapsible, so that they fold flat and may be conveniently carried in a suitcase.



No. 2 Brownie Post-card Enlarging Camera, for 3 1/4 x 5 1/2 enlargements from 2 1/4 x 3 1/4 negatives	\$2.75
No. 2 Brownie Enlarging Camera, for 5 x 7 enlargements from 2 1/4 x 3 1/4 negatives	3.20
No. 3 Ditto, for 6 1/2 x 8 1/2 enlargements from 3 1/4 x 4 1/4 negatives	4.30
No. 4 Ditto, for 8 x 10, 6 3/4 x 10' and 5 3/8 x 9 3/8 enlargements from 4 x 5, 3 1/4 x 5 1/2 and 2 7/8 x 4 7/8 negatives, respectively	4.80

V. P. KODAK ENLARGING CAMERA

This is made upon the same principle as the Brownie Enlarging Camera, excepting that being small in itself, it is not made collapsible and is in one section only.

It offers the simplest means for making 3 1/4" x 5 1/2" enlargements from 1 5/8" x 2 1/2" negatives.

Vest Pocket Kodak Enlarging Camera	\$2.75
--	--------

VELOX PAPER

Velox is a developing-out paper that prints in any light, requires no dark room and permits the amateur to utilize his evening hours in print making. Its simplicity of manipulation, and variety of grades and surfaces, make it especially suitable for all amateur requirements.

Velox is divided broadly into three kinds of paper, called "Regular," "Special" and "Contrast," the first divisions containing a variety of surfaces. "Regular" and "Contrast" papers develop quickly and are best suited for negatives lacking contrast. "Special" papers develop slowly, and give soft effects from hard negatives.

Velox "Contrast" is made in Velvet (semi-gloss) single weight. Contrast Velox will secure the best possible results from extremely thin or from dense flat negatives.

Velox "Regular" has the following surfaces: Carbon (matte). Glossy, Glossy double weight, Velvet, Velvet double weight. Velvet is recommended for very flat negatives and gives semi gloss prints of exceptional quality.

In the "Special" class, the surfaces are Carbon (matte), Portrait (smooth matte), Portrait double weight, Glossy, Glossy double weight, Velvet, and Velvet double weight. Special Velox has a greater range than any of the other "Special" papers.

Royal Velox is coated on an India tint stock in "Regular" and "Special," in one surface, and just rough enough to produce soft, mellow-tinted prints.

Price

Size	Single Weight			Double Weight		
	Dozen	½ Gross	Gross	Dozen	½ Gross	Gross
1⅞ × 2½	\$0.10	\$0.60	\$1.00	\$0.15	\$0.75	\$1.25
2¼ × 3¼	.10	.60	1.00	.15	.75	1.25
2½ × 4¼	.12	.70	1.25	.18	.90	1.55
3½ × 3½	.15	.80	1.50	.20	1.00	1.90
3¼ × 4¼	.15	.80	1.50	.20	1.00	1.90
2⅞ × 4⅞	.15	.80	1.50	.20	1.00	1.90
3¼ × 5½	.15	.80	1.50	.20	1.00	1.90
4 × 5	.20	1.10	2.00	.25	1.40	2.50
*3⅞ × 6½	.20	1.10	2.00			
†3⅞ × 6	.20	1.10	2.00			
2¼ × 7	.15	.80	1.50	.20	1.00	1.90
4¼ × 6½	.30	1.65	2.80	.40	2.05	3.50
5 × 7	.35	2.00	3.50	.45	2.50	4.40
3½ × 12	.45	2.50	4.50	.55	3.15	5.65
Velox Post-cards, 3½ × 5½, furnished in Regular Velvet, Special Velvet, Special Portrait, Regular Glossy, Special Glossy and Regular Royal and Special Royal20	1.10	2.00
Ditto, Double Post-cards, 3½ × 11 inches40	2.20	4.00
Brownie Post-Cards, 2¼ × 4¼, Regular and Special Velvet				.15	.80	1.50

*Glossy only (for use in Stereo Brownie Printing Frame).

†For use in Stereo Kodak Self-transposing Printing Frame.

VELOX SUNDRIES

N. A. (Non-abrasion Velox) Liquid Developer, 4-ounce bottle (makes 16 ounces for Special, Regular or Contrast) . . .	\$0.38
Ditto, 16-ounce bottle	1.15
Nepera Solution, per 4-ounce bottle30
Ditto, per 16-ounce bottle90
Nepera Auxiliary Powders (for converting Nepera solution to a film or plate developer), per package 1 dozen35
*Velox Re-developer for Sepia Tones, per 4-ounce bottle50
*Ditto, 2 ounces (sufficient for 150 4 x 5 prints)30
Velox Re-developer Tubes, for sepia toning, per package 12 tubes	.85
Velox Liquid Hardener, per 4-ounce bottle15
Ditto, 8-ounce bottle25
Kodak N. A. M. Q. Developer, per package 3 tubes38
Kodak Acid Fixing Powder for fixing Velox Prints, per pound .	.25
Ditto, $\frac{1}{2}$ pound15
Ditto, $\frac{1}{4}$ pound10

*Package also includes bleaching agent.

Prices subject to change without notice.

EASTMAN BROMIDE PAPERS

Following are the descriptions of the several grades and surfaces.

“VELVET” has a semi-gloss surface which gives to the shadows of the enlarged pictures a pleasing brilliance.

“BRILLIANT VELVET” is a duplicate of the original Velvet so far as surface is concerned, but the emulsion gives a high degree of contrast.

“STANDARD” is made in three grades, as follows: A—thin smooth; B—heavy smooth; C—heavy rough. A natural surface stock is used which lends itself to special finishing in oils, water colors, crayon or pastel work.

“MATTE-ENAMEL” produces prints with rich velvety blacks on a smooth, matte surface, tinted just enough to lend warmth to the highlights and half-tones.

“ENAMELED” has a high glossy surface; medium weight stock.

“ROYAL” is offered in two surfaces, Smooth and Rough, on a medium weight buff colored stock. Royal is the favorite paper for Sepia enlargements, in which it gives prints of unsurpassed richness and tone.

EASTMAN BROMIDE PAPERS

Size	Per Doz.	Size	Per Doz.	Size	Per Doz.
5 x 7	\$0.35	8 x 10	\$0.80	14 x 17	\$2.40
5 x 8	.40	10 x 12	1.20	16 x 20	3.20
6½ x 8½	.60	11 x 14	1.60	18 x 22	4.00

Bromide Post Cards for enlargements from V. P. K. and 2¼ x 3¼ film negatives by means of the V. P. K. Enlarging Camera and the No. 2 Brownie Post Card Enlarging Camera may be had in two surfaces—Matte and Glossy—price 20 cents per dozen.

SOLIO PAPER

A rapid, glossy, printing-out paper

Size	Per Package, 2 Doz.	Size	Per Package, 2 Doz.
1½ x 2½	\$0.20	2¼ x 7 (No. 1 Panoram Kodak)	\$0.25
2¼ x 3¼	.20		Per Doz.
2½ x 4¼	.20	4¼ x 6½	\$0.25
3½ x 3½	.20	5 x 7	.30
3¼ x 4¼	.20	3½ x 12 (No. 4 Panoram Kodak)	.35
2¾ x 4¾	.20	Post-cards	.15
3¼ x 5½	.25	Double Solio Post-cards	.30
4 x 5	.25	Brownie Post-cards, 2¾ x 4¼	.10

Solio Toning and Fixing Powders, per carton, 5 tubes, 25 cents. Solio Combined Toning and Fixing Solution, per 8-ounce bottle, 50 cents. Ditto, 4-ounce bottle, 30 cents; post-paid, 50 cents. Solio Hardener, per 8-ounce bottle, 70 cents.

KODAK DRY MOUNTING TISSUE

Mounts prints even on thin mounts without curl. The simplest method of mounting, no apparatus being required—just fix the tissue on print, lay on mount and press with a warm flat iron; no sticky fingers, no muss of any kind.

PRICE

Size, 3½ x 3½, 3 dozen . . . \$0.12	Size, 4 x 5, 2 dozen . . . \$0.12
Size, 3¼ x 4¼, 3 dozen12	Size, 4¼ x 6½, 1 dozen12
Size, 3¼ x 5½, 2 dozen12	Size, 5 x 7, 1 dozen12

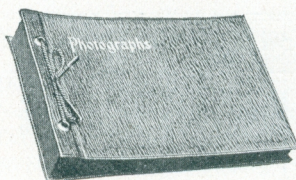
GLASS DRY PLATES

Seed and Royal Brands

Size	Per Doz.	Size	Per Doz.
3½ x 3½	\$0.35	Royal Lantern Slide Plates,	
3¼ x 4¼	.45	3¼ x 3¼	\$0.35
3¼ x 5½	.65	Ditto, 3¼ x 4	.45
4 x 5	.65	Cover Glass for Lantern Slides,	
4¼ x 6½	.90	3¼ x 3¼	.35
5 x 7	1.10	Ditto, 3¼ x 4	.40

Lantern Slide Binders, per package, 50 strips . . . \$0.10

ALBUMS



BALMORAL

This album is made of first quality material and on the open-back, loose-leaf principle, a decided advantage over the usual style of solid bound books. The fifty black leaves are firmly held in place by means of small metal tubes through

which a silk cord is passed and tied. Any leaf may quickly be removed and new leaves added.

Not the least attractive feature is the cover of genuine crepe leather, a most pleasing finish—"Photographs" is stamped in gold letters on the upper left hand corner.

No.	Size of Leaf	Price each	Extra leaves per doz.
A	5 1/2 x 7	\$2.50	\$.18
B	7 x 10	3.50	.25

WESTMINSTER

This style has much in common with the Balmoral, their general make-up being the same—open-back, loose-leaf plan, with fifty black leaves. However, the cover material is black, seal grain leatherette, carrying the word "Photographs" in the upper left hand corner.



No.	Size of Leaf	Price each	Extra leaves per doz.
A	5 1/2 x 7 1/2	\$1.50	\$.18
B	7 x 10	2.00	.25

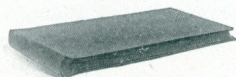
GLENDALE

Similar in make-up to Balmoral and Westminster, but has cover of linen-finish cloth, open-back, loose-leaf plan, "Photographs" on cover.

No.	Size of Leaf	Price each	Extra leaves per doz.
A	5 1/2 x 7 1/2	\$1.25	\$.18
B	7 x 10	1.75	.25

APOLLO

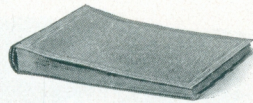
Solid bound, rounded back. Cover of black cloth, watered silk effect. A pocket for loose prints is a most valuable feature. Black leaves only.



No.	Size of Leaf	Price each	No.	Size of Leaf	Price each
A 25 leaves	5 x 8	\$1.00	E 50 leaves	5 x 8	\$1.25
B 25 leaves	7 x 11	1.25	F 50 leaves	7 x 11	1.60
C 25 leaves	10 x 12	2.25	G 50 leaves	10 x 12	2.50
D 25 leaves	9 x 14	2.35	H 50 leaves	9 x 14	2.75

TIBER

This also is a loose-leaf album, but not of the open-back style. The leaves are bound in place by means of a cord which passes through eyelets placed in flaps hinged to the insides of the covers, in the centre of the back. Cover is of black leatherette and the whole is quite flexible. Fifty black leaves.



No.	Size of Leaf	Price each	Extra leaves per doz.
A	5 x 8	\$1.25	\$.18
B	7 x 11	1.7525
C	10 x 12	2.4035
D	9 x 14	2.7550

FORUM

Flexible cover of black cloth, leather-embossed.

No.	Size of Leaf	Price each	No.	Size of Leaf	Price each
A 25 black leaves	5 1/2 x 7	\$.70	G 50 black leaves	10 x 7	\$1.30
B 25 black leaves	7 x 10	.90	H 50 black leaves	11 x 14	2.55
C 25 black leaves	10 x 7	.90	N 25 sepia leaves	5 1/2 x 7	.70
D 25 black leaves	11 x 14	2.15	O 25 sepia leaves	7 x 10	.90
E 50 black leaves	5 1/2 x 7	.90	P 25 sepia leaves	10 x 7	.90
F 50 black leaves	7 x 10	1.30	R 25 sepia leaves	11 x 14	2.15

KODAK

Cover of a single piece of black narrow grain cowhide—leather tweed. Leaves held in place by a black silk cord passing through cover and metal tubes. Very flexible—edges in the style of the Oxford Bible.



No.	Size of Leaf	Price each	Extra leaves per doz.
A	4 3/4 x 7	\$3.75	\$.15
B	7 x 11	5.5018

WEEK-END

Most suitable for sending to a friend the photographic souvenirs of a visit or of a trip together. Made on the loose-leaf plan, covers of sheepskin finished on the outside in craftsman style, of a brownish olive hue, the under side unfinished.

No. 1. 12 black leaves, 3 x 4 1/2 inches	\$.35	No. 2. 12 black leaves, 5 x 6 inches	\$.50
Extra leaves, per dozen08	Extra leaves, per dozen12

ARTIST'S

Loose-leaf system, silk lacing.

No. 1, black leaves; No. 2, white leaves;	
No. 3, sepia leaves; 5 1/2 x 7 inches, each	\$.35
Extra leaves, per pkg. of 512
No. 4, black leaves; No. 5, white leaves;	
No. 6, sepia leaves; 7 x 10 inches, each	\$.50
Extra leaves, per pkg. of 515



SNAP-SHOT

Cover of substantial cord—soft black leaves.

No. 18, 20 pages, 7 x 10, each	\$.22	No. 19, 20 pages, 5 1/2 x 7, each	\$.18
--	-------	---	-------

KODAK FILM NEGATIVE ALBUM



A safe, convenient and efficient means of keeping film negatives. Each leaf is, itself, an envelope and the negatives do not come in contact with each other. Indexed, so as to afford a ready reference.

For 100 negatives, $2\frac{1}{2} \times 4\frac{1}{4}$, or smaller	\$1.00
For 100 negatives, $3\frac{1}{4} \times 5\frac{1}{2}$, or smaller	1.25
For 100 negatives, $3\frac{3}{4} \times 4\frac{1}{4}$, $2\frac{3}{8} \times 4\frac{7}{8}$ or 4×5	1.25
For 100 negatives, 5×7 , or smaller	1.75

KODAK CARD MOUNTS

VIEW

Carbon Black, and Scotch Grey, felt surface, bevelled edges, no embossed design.

For Prints	Size Outside	Per 50	Per doz.	For Prints	Size outside	Per 50	Per doz.
$1\frac{5}{8} \times 2\frac{1}{2}$	$3\frac{1}{4} \times 4$	\$0.55	\$0.20	4×5	$5\frac{3}{8} \times 6\frac{3}{8}$	\$1.05	\$0.35
$2\frac{1}{4} \times 3\frac{1}{4}$	4×5	.60	.20	$2\frac{1}{4} \times 7$	$4 \times 8\frac{3}{4}$	1.10	.35
$2\frac{1}{2} \times 4\frac{1}{4}$	$4\frac{1}{4} \times 6$.85	.30	$4\frac{1}{4} \times 6\frac{1}{2}$	$6\frac{1}{4} \times 8\frac{1}{2}$	1.55	.45
$3\frac{1}{2} \times 3\frac{1}{2}$	5×5	.85	.30	5×7	7×9	1.70	.50
$3\frac{3}{4} \times 4\frac{1}{4}$	5×6	1.00	.35	$3\frac{1}{2} \times 12$	$5\frac{3}{8} \times 13\frac{3}{4}$	1.85	.55
$3\frac{3}{4} \times 5\frac{1}{2}$	$5\frac{1}{4} \times 7$	1.15	.40				

LAGOON

Jet Black, Ash Grey and White

For Prints	Size Outside	Per 50	Per doz.	For Prints	Size Outside	Per 50	Per doz.
$2\frac{1}{4} \times 2\frac{1}{4}$	$3\frac{5}{8} \times 3\frac{5}{8}$	\$0.65	\$0.20	$2\frac{7}{8} \times 4\frac{7}{8}$	5×7	\$1.25	\$0.35
$2\frac{1}{4} \times 3\frac{1}{4}$	4×5	.80	.25	$3\frac{3}{4} \times 5\frac{1}{2}$	$5\frac{1}{4} \times 7\frac{1}{2}$	1.35	.40
$2\frac{1}{2} \times 4\frac{1}{4}$	$4\frac{1}{4} \times 6$	1.00	.30	4×5	$5\frac{3}{8} \times 6\frac{3}{8}$	1.25	.35
$3\frac{1}{2} \times 3\frac{1}{2}$	5×5	1.00	.30	$4\frac{1}{4} \times 6\frac{1}{2}$	$6\frac{1}{4} \times 8\frac{1}{2}$	1.90	.55
$3\frac{3}{4} \times 4\frac{1}{4}$	5×6	1.15	.35	5×7	7×9	2.05	.60

RIDGEWAY

In duplex form, for Oval or Square Prints, Brown and Grey.

For Prints	Size Outside	Per 50	Per doz.	For Prints	Size Outside	Per 50	Per doz.
$2\frac{1}{4} \times 3\frac{1}{4}$	4×5	\$1.75	\$0.50	$2\frac{7}{8} \times 4\frac{7}{8}$	5×7	\$2.20	\$0.65
$2\frac{1}{2} \times 4\frac{1}{4}$	$4\frac{1}{4} \times 6$	1.85	.55	$3\frac{3}{4} \times 5\frac{1}{2}$	$5\frac{1}{4} \times 7\frac{1}{2}$	2.35	.70
$3\frac{3}{4} \times 4\frac{1}{4}$	5×6	2.10	.60	4×5	$5\frac{3}{8} \times 6\frac{3}{8}$	2.50	.75

INSLIP ENLARGEMENT MOUNT COLOR, ENGLISH GREY OR SEPIA BUFF

No.	For Prints	Size Outside	Price Per Doz.	No.	For Prints	Size Outside	Price Per Doz.
A	$3\frac{1}{4} \times 5\frac{1}{2}$	$7\frac{1}{4} \times 9\frac{1}{2}$	\$0.85	E	6×10	$10\frac{3}{8} \times 14\frac{3}{8}$	\$1.20
B	$4\frac{1}{4} \times 6\frac{1}{2}$	$8\frac{1}{4} \times 10\frac{1}{2}$.90	F	8×10	$12\frac{3}{4} \times 14\frac{3}{8}$	1.50
C	5×7	$9\frac{1}{8} \times 11\frac{1}{8}$.90	K	$5 \times 8\frac{1}{2}$	$9 \times 12\frac{1}{2}$.90
D	$6\frac{1}{2} \times 8\frac{1}{2}$	$11\frac{1}{8} \times 13\frac{3}{8}$	1.20	M	7×11	11×15	1.75

Price per Half Dozen

G	10×12	15×17	\$1.20	J	11×14	17×20	\$1.65
H	8×14	14×20	1.20	L	7×12	$11\frac{1}{2} \times 16\frac{1}{2}$	1.25

THE DRIMOUNT

COLOR, ENGLISH GREY OR SEPIA BUFF

No.	For Prints	Size Outside	Price Per Doz.	No.	For Prints	Size Outside	Price Per Doz.
A	3¼ × 5½	7¼ × 9½	\$0.50	E	6 × 10	10¾ × 14¾	\$0.65
B	4¼ × 6½	8¼ × 10½	.50	F	8 × 10	12¾ × 14¾	.85
C	5 × 7	9½ × 11½	.50	K	5 × 8½	9 × 12½	.55
D	6½ × 8½	11¾ × 13¾	.65	M	7 × 11	11 × 15	1.10

Price per Half Dozen

G	10 × 12	15 × 17	\$0.70	J	11 × 14	17 × 20	\$0.90
H	8 × 14	14 × 20	.70	L	7 × 12	11½ × 16½	.60

WOODMAT

A new medium for mounting prints on the "slip-in" principle, giving the effect of a rich brown wood frame.

	For Print	Outside	Each
No. 1	2¼ × 3¼	4¾ × 5¾	\$0.07
No. 1A	2½ × 4¼	4¾ × 6¾	.08
No. 3	3¼ × 4¼	5½ × 6½	.09
No. 3A	3¼ × 5½	6¼ × 8¾	.10
No. 4	4 × 5	6¾ × 7¾	.10

THE DUOTONE FOLDER

A neat folder in a pleasing shade of buff that goes well with either sepia or black and white prints. The prints are placed by slipping them under a flap.

	For Prints	Per 50	Per Doz.		For Prints	Per 50	Per Doz.
No. 0	1½ × 2½	\$2.10	\$0.70	No. 2C	2¾ × 4¾	\$3.00	\$0.90
No. 1	2¼ × 3¼	2.50	.80	No. 3A	3¼ × 5½	3.25	.95
No. 1A	2½ × 4¼	2.75	.85				

"HOW TO MAKE GOOD PICTURES."

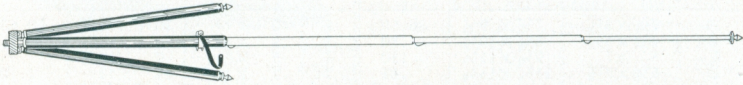
A handbook on the principles and practice of Photography, written in plain language that can be understood by anyone. Home Portraiture and the making of indoor pictures generally are treated extensively and the use of the Portrait Attachment fully explained.

The various steps and processes are described separately and full instructions given in each instance in addition to sections devoted to the underlying principles of the art.

The price, paper covers \$0.30

TRIPODS

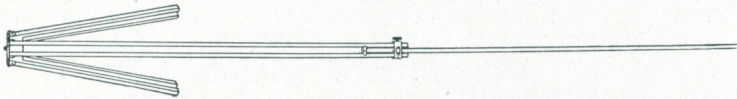
KODAK METAL



The Kodak Metal Tripods have telescoping legs of brass tubing, the upper sections in black enamel—the lower ones nickel. They are light, compact and exceptionally rigid. No. 1 has revolving head, while No. 1C has solid head. No. 400 folds up flat and is supplied in neat case.

No. 0	—Three sections, length closed 15½ inches	\$3.75
No. 1C	—Four sections, length closed 15¼ inches	5.00
No. 1	—Four sections, length closed 15 inches	5.50
No. 400	—Seven sections, length closed 12 inches	6.25

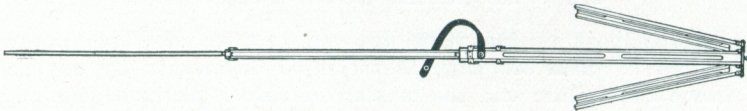
THE BULL'S-EYE



Two sections. Aluminum revolving head. Made of maple, with brass fittings. For 4 x 5 cameras, or smaller. Length, extended, 42½ inches; folded, 24 inches. The only two-section tripod that will go into a suitcase.

Price, \$2.50.

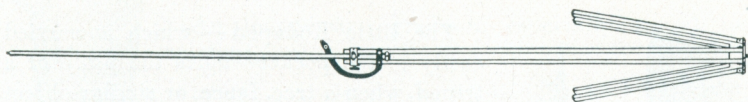
THE STANDARD



The feature of this tripod is the automatic locking of the sections when they are extended. Light, compact and rigid. Fixed, non-detachable head. Length, folded 21 inches, extended, 53½ inches. Weight, 18 ounces. Cherry finish, brass trimmings.

Price, \$3.25.

THE FLEXO



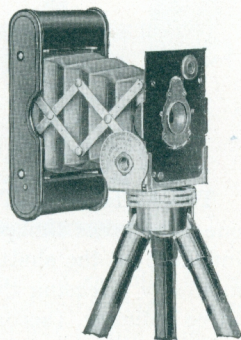
Two sections. Fixed, non-detachable head. Only clear, straight-grained wood is used in its construction.

Price, \$1.50.

VEST POCKET KODAK TRIPOD ADAPTER

The adapter simply slips over the front standard of the Vest Pocket Kodak and by attaching to a tripod, may be used in either the vertical or horizontal positions. It may be instantly detached when not in use.

Price, \$0.50.



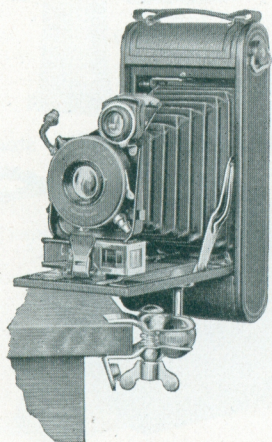
THE OPTIPOD

The new Optipod is a combined tripod head and clamp which may be used effec-

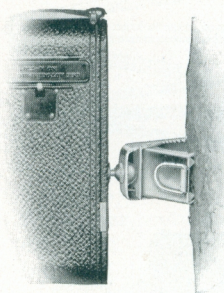
tively as a tripod when clamped to a chair, table, automobile, motorcycle, or any substantial object. It is small and light, slipping readily into the pocket and may be carried without inconvenience.

When used in connection with a tripod, the Optipod gives the advantage of its ball and socket joint, permitting the camera to be tilted to any desired angle. This feature is especially desirable when photographing objects at close range and when it is impossible to place a tripod alone, in the desired position.

Price, \$1.00.



THE KODAPOD



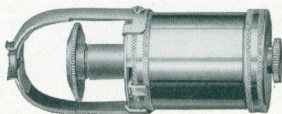
The little Kodapod — which is carried easily in the pocket—takes the place of a tripod, when a tree, fence, or similar object is near at hand. Its jaws have a bulldog grip that holds the wood like a vise, and a clamping screw holds the Kodak firmly in position. By means of a clamping screw, the camera may be adjusted to the correct vertical or horizontal position. It fits any standard tripod socket.

The Kodapod \$2.00

KODAK SELF TIMER

The Kodak Self Timer “presses the button” and permits the one who takes the picture to be one of the group. It has no influence on the shutter speeds, it being simply a means of automatically releasing the shutter in intervals of one-half second to three minutes (according to adjustment), after the Timer is released.

The Timer is made in but one size, and may be used on any camera fitted with cable release, but cannot be used with bulb and tube.



Kodak Self-Timer \$1.50

KODAK TRIMMING BOARDS

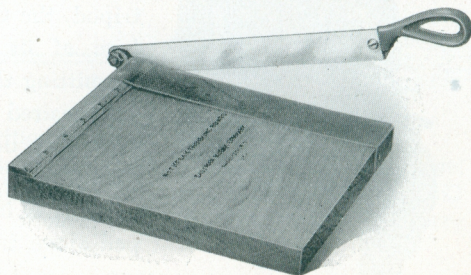
Made of hard wood, with natural finish, have fine quality steel blades and are fitted with rule.

No. 1, capacity, 5x5 inches \$0.50

No. 2, capacity, 7x7 inches70

Transparent Trimming Gauge (extra). For No. 1

Ditto, for No. 240





MOULDED GRADUATE

An inexpensive graduate especially suited to amateur use.

4 ounce	\$0.20
8 ounce30
16 ounce40

EASTMAN THERMOMETER

Especially valuable in tank or tray development. Has hook from which it can be suspended and has curved back to fit inside of tank.



Eastman Thermometer \$0.75

THERMOMETER STIRRING ROD



A combined stirring rod and thermometer. Carefully tested and accurate. Has flat end for pulverizing. The rod is $\frac{1}{4}$ inch in diameter and $9\frac{1}{4}$ inches long.

Thermometer Stirring Rod \$1.00



EASTMAN PHOTO PASTE

A solid, first quality white paste, will not discolor print or mount.

3-ounce tube	\$0.15
5-ounce tube25

FLEXO PRINT ROLLER

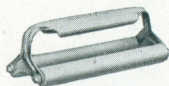
A thoroughly practical roller for mounting. Has 4-inch rubber roller and black enameled frame.



Flexo Print Roller \$0.25

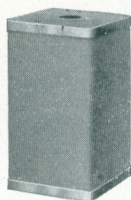
KODAK PRINT ROLLER

The best roller constructed for amateur use. Has two 6-inch rubber rollers and finely nickered frame.



Kodak Print Roller \$1.00

KODAK CANDLE LAMP

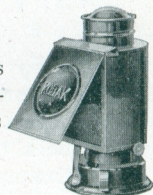


This clever little lamp is collapsible and can be packed into very small space when not in use. It is made of special tested ruby fabric, bound in metal frames and gives a strong, safe light for the darkroom.

Kodak Candle Lamp \$0.25
Extra Candles for same, per dozen40

KODAK DARK ROOM LAMP

The Kodak Dark Room Lamp is oil burning and is fitted with both orange and ruby glass. It has an unusually broad wick regulated from the outside and gives a soft, steady light for the dark room.



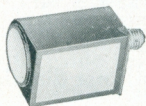
No. 2 Kodak Dark Room Lamp \$1.25

BROWNIE SAFELIGHT LAMP

But little larger than the electric bulb it holds, the Brownie Safelight Lamp screws into an electric socket which may be conveniently situated close to the place where the work is to be done.

The lamp is made of metal, neatly japanned; has circular safelight in the end and side safelight as well. Both safelights are a special series, 1B, and removable so that other series may be used, if desired. A 15 Watt Mazda lamp is used, but is not supplied.

The Brownie offers a most satisfactory means for dark room lighting where electricity is available.



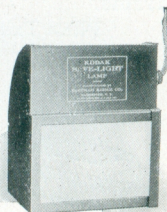
Brownie Safelight Lamp \$1.75
Extra Circular End Safelight (any series)25
each
Extra Side Safelight (any series), each35

KODAK SAFELIGHT LAMP

The Kodak Safelight Lamp is ideal for all dark room uses, whether that be the work of the beginner, the advanced amateur, or the professional.

The lamp is supplied with a 5 x 7, Special Series 1B, safelight for use with films or plates. Safelights of other series may be obtained, if desired, for more advanced work. It is made of metal; neatly finished in a warm tone of brown and the inside is enameled white to intensify the force of the reflected light from the electric bulb in the top.

The lamp is supplied complete, with electric fittings, excepting electric bulb, including besides the safelight, 4½ feet of electric light cord and plug.



Kodak Safelight Lamp \$4.00

SAFELIGHTS FOR KODAK SAFELIGHT LAMP

Series 00—Yellow light, for use with gaslight papers.

Series 0—Bright orange light, for use with bromide paper and lantern plates.

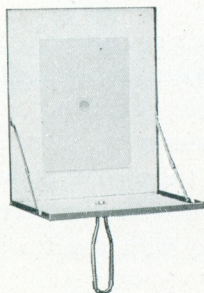
Series 1—Orange safelight, for use with films or plates not color sensitive.

Series 2—Safelight, for extra rapid orthochromatic films and plates sensitive to green but not red.

Series 3—Green safelight, for use with red-sensitive panchromatic plates.

Series 4—Bright green safelight, for use with ordinary plates, for those who cannot use a red light. Not safe for orthochromatic plates. Size, 5 x 7 (any series), each \$0.60

FLASH LIGHT MATERIAL



The simplest and safest method of making flash light pictures is by means of the Eastman Flash Sheets and Kodak Flash Sheet Holder. The sheets burn slowly, giving a broad, soft light, and are not so startling to the subject as to give a staring effect to the eyes.

The holder is provided with a saw tooth for holding the sheet in proper position, and is lighted from the back, through an aperture provided in the center for the purpose. In this manner the holder is always between the operator and the flash sheet, and it may be held in the hand or supported on a tripod, a socket being provided for the purpose.

*No. 1 Flash Sheets, per package of 1/2 dozen sheets 3 x 4	\$0.35
*No. 2 Flash Sheets, per package of 1/2 dozen sheets 4 x 556
*No. 3 Flash Sheets, per package of 1/2 dozen sheets 5 x 784
Kodak Flash Sheet Holder	1.25

*Prices subject to change without notice.



VELOX TRANSPARENT WATER COLOR STAMPS

The making of beautifully colored prints or lantern slides, by the use of Velox Transparent Water Color stamps, will be found an interesting and highly enjoyable diversion.

Each book of stamps includes twelve sheets of colors and each sheet is divided by perforations into twenty-two stamps. To use any color, tear off a stamp, place in a small saucer or palette supplied with the outfit, and cover with about a teaspoonful of water.

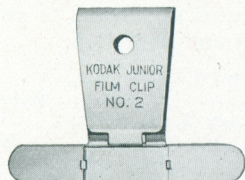
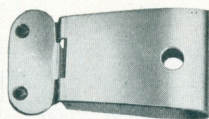
The Velox Transparent Water Color Stamp Outfit offers the greatest convenience in coloring prints, as it includes the book of stamps, three brushes and a white enameled mixing palette, put up in a neat cardboard case.

Velox Transparent Water Color Stamps, complete booklet, 12 colors	\$0.35
Separate Color Leaves, two sheets, each03
Set of 3 Special Brushes, per set50
Mixing Palette30
Velox Transparent Water Color Stamp Outfit, including book, three brushes and palette85

KODAK JUNIOR FILM CLIP No. 1

The No. 1 clip is the most practical for tray development or drying of films. Has two jaws to prevent film from slipping. One size only.

Kodak Junior Film Clip No. 1, each . . . \$0.20

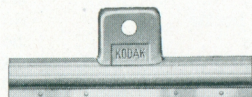


KODAK JUNIOR FILM CLIP No. 2

This new film clip is similar to the No. 1 but on account of being wider, may be used with wider film and will hold the film flat.

It is particularly adapted for use with 3A film, but may be used as well with larger or smaller film. Has jaws to prevent the wet film from slipping. Furnished in one size only, 3 inches wide.

Kodak Junior Film Clip No. 2, each . . . \$0.40



EASTMAN FILM CLIP

A thoroughly dependable clip. Made in two sizes and nickel-plated.

3½-inch, per pair . . . \$0.40
5-inch, per pair45



DEVELOPING TRAYS

"Bull's-Eye" Composition, 4 x 6	\$0.22
"Bull's-Eye" Composition, 5 x 845
"Bull's-Eye" Composition, 3 x 8½45
"Bull's-Eye" Composition, 4½ x 1490
Maple Leaf Enameled, 4 x 655
Maple Leaf Enameled, 5 x 780
Maple Leaf Enameled, No. 3A, shallow35

SUNDRIES

Cable Release, each . . . \$0.35	Eastman Spotting Colors, consists of four colors: black, blue, red and white, per set40
Hard Rubber Stirring Rod .35	Ferrotyping Plate, 10x14, light25
Kodak Film Clips, 5-inch (wood) per pair	Ferrotyping Plate, 10 x 14, heavy35
Focusing Cloth, per yard . 1.10	Eastman Special Squeegee, 8-inch	\$0.85

TESTED CHEMICALS



Certainty in making negatives and prints depends as much on the quality of your chemicals as on any other one thing. All Kodak chemicals are tested both photographically and for purity before the C. K. C. tested seal is allowed to go upon them. That seal is your protection.

Kodak Chemical Outfit consists of M. Q. and Special Developers, Intensifier, Reducer and Velox Re-developer	\$0.40
Eastman Special Developer Powders, per package 5, in sealed glass tubes25
Eastman Hydrochinon Developer Powders, per package 5 powders, in sealed glass tubes35
Eastman Pyro Developer Powders, per package 5 powders, in sealed glass tubes25
Tozol, per 1-ounce bottle92
Kodelon, per 1 ounce75
Hydrochinon, per 1-ounce can40
Eastman Permanent Crystal Pyro, per 1-ounce bottle45
Velox Re-developer Tubes, package of 12 tubes85
Hyposulphite of Soda, granular, per pound14
Alum, powdered, per pound30
Kodak Acid Fixing Powder, per pound package25
Ditto, per ½-pound package15
Ditto, per ¼-pound package10
Eastman Intensifier, glass tube, per tube15
Eastman Reducer, per box of 5 tubes50
Potassium Bromide, per ounce15
Acetic Acid, 28 per cent., per 1-pound bottle30
Citric Acid, 4-ounce bottle85
Kodak Tested Carbonate of Soda (desiccated), per 1-pound bottle33
Kodak Tested Sulphite of Soda (desiccated), per 1-pound bottle35

For Velox preparations, see page 50. For Solio preparations, see page 51.

For Tank Developer Chemicals, see page 41.

TERMS

The prices in this catalogue are strictly net, except to regular dealers who carry our goods in stock. THESE PRICES, OWING TO UNSETTLED CONDITIONS, ARE, HOWEVER, SUBJECT TO CHANGE WITHOUT NOTICE. For the convenience of our customers we recommend that they make their purchases from a dealer in photographic goods, as by so doing they can save both time and transportation charges.

CANADIAN KODAK CO., LIMITED,

TORONTO, CANADA

“KODAK”

IS our registered and common-law Trade Mark and cannot be rightfully applied except to goods of our manufacture. When a dealer tries to sell you under the Kodak name, a camera or films or other goods not of our manufacture, you can be sure that he has an inferior article that he is trying to market on the Kodak reputation.

*If it isn't an Eastman,
it isn't a Kodak*

W. E. HILL & BRO.,
90 King St. W.,
HAMILTON, - - ONT.