

A PUBLICATION OF THE
NIKON HISTORICAL SOCIETY

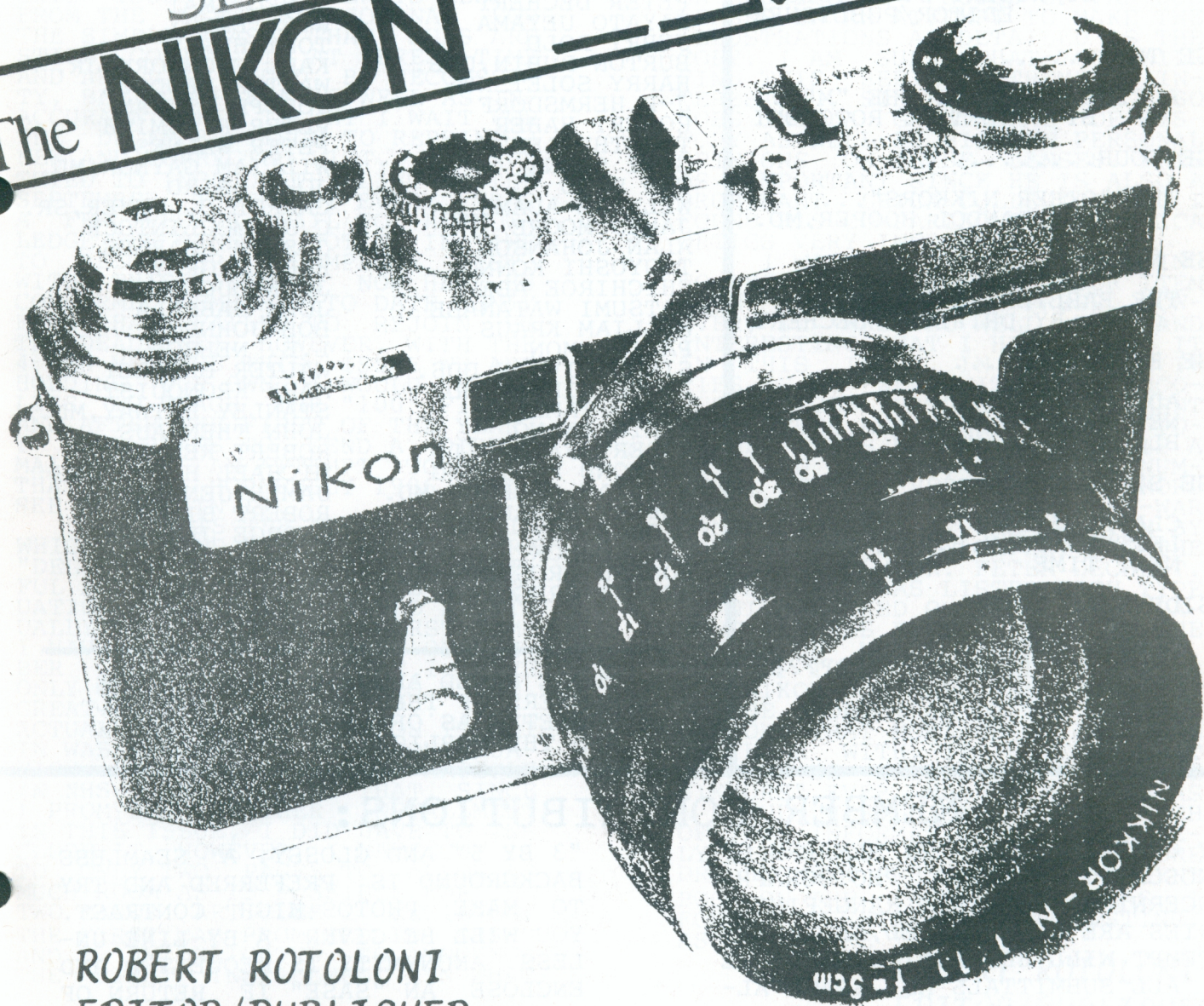
DECEMBER 31, 1985

NHS
NIPPON
KOGAKU
TOKYO

10

SEASON'S GREETINGS

The NIKON  Journal



ROBERT ROTOLONI
EDITOR/PUBLISHER

THE "NIKON JOURNAL" IS THE OFFICIAL PUBLICATION OF THE NIKON HISTORICAL SOCIETY AND IS PRODUCED BY RJR PUBLISHING, INC. FOR THE EDUCATION AND BENEFIT OF ITS

MEMBERS, AND IS PUBLISHED FOUR TIMES A YEAR. ADDRESS ALL YOUR CORRESPONDENCE TO.....
ROBERT ROTOLONI, P.O. BOX 3213,
MUNSTER, INDIANA 46321.....USA.

CONTENTS

PAGE ONE.....

EDITORIAL
BY ROBERT J. ROTOLONI
EDITOR/PUBLISHER

PAGE TWO.....

A CLOSE LOOK AT THE "M"...
BY ROBERT J. ROTOLONI

PAGE FOUR.....

THE "OTHER NIKKORS"...
BY DR. RANDOL HOOPER, MD.

PAGE NINE.....

THE EARLIEST NIKKORS...
BY DR. PETER DECHERT

PAGE FIFTEEN.....

ADDRESS CHANGES
NEW MEMBERS
BLACK IS BEAUTIFUL

PAGE SIXTEEN.....

CLASSIFIEDS
LETTERS TO N.H.S.
NEXT TIME

INSIDE REAR COVER

ODDS N ENDS...
"THE S2P"?????????

SOCIETY MEMBERS

ROBERT ROTOLONI	KARL MANTYLA
DAVID WEILER	JOHN SCHRADER
JOHN ANGLE	BOB THOMPSON
ROBERT HARRIS	JEREMY ROWE
SAM DECKER, MD.	TAKAYUKI KAWAI
RANDY REED	SHIGERU KAJII
CARL JOECKS	R.E.(TED) CAIS
STEPHEN GANDY	ROY VOSE
MEL WILNER, DDS.	JOHN HANSEN, JR.
MAURICE MAUNER	J.L. HUTCHINSON
RANDOL HOOPER, MD.	P.H. VAN HASBROECK
CHARLES PADDOCK	JAMES MARTIN
RICHARD SEYFARTH	OLIVER J. REDDAWAY
PETER DECHERT	TANEO IMAI
HAYATO UHEYAMA	W.S. EMERY
JERRY ROLD	TONY HURST
BURTON RUBIN, DDS.	KARL EICHHORN, JR.
HARRY SOLETSKY	WALTER MENDOZA
J-P HERMSDORF	JOSEPH HIGHAM
ROBERT HABER	PETER R. SMITH
TIMOTHY LEEDY	PETER WALNES
GARY STONE	WILLIAM GAYNOR, MD.
TAD SATO	JOHN BAIRD
WILLIAM ADAMS	CARROL O. MEYER, SR.
JAMES MOORE	C.J. MCCLINTOCK
ALAN JOHANSON	JOSEPH CHARLES
TSUYOSHI KONNO	HAROLD GRAY
SHICHIROE ABE	JACK DUGREW
KATSUMI WATANABE	JOHN SABELLA
WILLIAM KRAUS	BOB JOHNSON
PAUL COMON	L.E. NELSON
SIMON CIVJAN, DDS.	WALTER BRADLEY
LLOYD MINAAI, MD.	MARK KRONQUIST
AKITO TAMLA	STANLEY BOTWAY, MD.
MIKIO AWANO	JOHN THENHAUS
ROBERT FAIRCHILD	ROBERT KENNEDY
RAYMOND F. YOUNG	MICHAEL H. SYMONS
WILLIAM JACKSON, MD.	JAMES JENSEN, JR.
ALBERT KUBANIS	ROBERT BILOW
GEORGE URY	GEORGE JENKINS
VIC GORECKI	
EDWARD BROSKEY	
BEN DI GREGORIO	

THOSE NAMED ABOVE CONSTITUTE THE MEMBERS OF THE "NIKON HISTORICAL SOCIETY" AS OF DECEMBER 31, 1985, AND THE PUBLICATION OF NHS-10.

MEMBER CONTRIBUTIONS:

ANY CONTRIBUTIONS BY MEMBERS OF MANUSCRIPTS AND/OR PHOTOGRAPHS CONCERNING THE NIKON RANGEFINDER SERIES ARE APPRECIATED, AND EVERY ATTEMPT WILL BE MADE TO MAKE USE OF ALL SUBMITTALS AS SPACE ALLOWS. PLEASE TYPE ALL MANUSCRIPTS AND MAKE ALL B/W PHOTOS AT LEAST

"3 BY 5" AND GLOSSY. A SEAMLESS BACKGROUND IS PREFERRED AND TRY TO MAKE PHOTOS HIGH CONTRAST. YOU WILL BE GIVEN A BY-LINE UNLESS ANONYMITY IS REQUESTED AND ENCLOSE AN "SASE" IF RETURN OF THE MATERIAL IS DESIRED.....
THANK YOU.

EDITORIAL

AS WE ENTER A BRAND NEW YEAR I WOULD LIKE TO WELCOME BACK NEARLY 98 PERCENT OF THE MEMBERS AND ANNOUNCE THE ADDITION OF FOUR NEW ONES. THEY ARE.....

ROBERT BILOW

GEORGE L. JENKINS

JAMES JENSEN, JR.

MICHAEL H. SYMONS

*****WELCOME TO OUR SOCIETY*****

IT APPEARS THAT THE MAJOR CHANGE MADE IN NHS-9 (FROM A DOT MATRIX TO A DAISYWHEEL PRINTER) HAS MET WITH GREAT SUCCESS. MANY OF YOU HAVE EXPRESSED YOUR GRATITUDE TO ME FOR HAVING SAVED YOUR EYESIGHT, AND FOR THE IMPROVED "LOOKS" OF THE JOURNAL. I PERSONALLY FEEL THE SAME WAY, AS DOES MY PRINTER, WHOSE JOB IS NOW MUCH EASIER, AND FIRMLY BELIEVE THAT IT WAS WORTH THE EXPENSE INVOLVED.

YOU WILL NOTICE THAT THE MEMBERSHIP LIST HAS RETURNED TO THIS ISSUE. IT IS ALWAYS ABSENT FROM THE SEPTEMBER JOURNAL FOR THE SIMPLE REASON THAT DUES ARE STILL COMING IN AT PRESS TIME AND ANY LIST WOULD, BY NECESSITY, BE INCOMPLETE AS WELL AS INACCURATE. THIS IS WHY I WAIT FOR THE DECEMBER ISSUE TO REPRINT A NEW AND CORRECTED LIST. I HAVE TRIED TO INCLUDE THE LIST IN THE SEPTEMBER ISSUE BUT EVERY YEAR A FEW PEOPLE FAIL TO ACKNOWLEDGE THE RENEWAL NOTICE IN TIME TO ALLOW FOR A COMPLETE LIST. WITH THIS ISSUE WE NOW HAVE 83 CONFIRMED MEMBERS (TO DATE ONLY FOUR HAVE FAILED TO REJOIN BY THE DEADLINE). HOWEVER, WITH THE 4 NEW MEMBERS THIS ISSUE WE ARE HOLDING OUR OWN. I WOULD STILL LIKE TO REACH THE "100" FIGURE AND, AFTER THE FIRST OF THE YEAR, I HAVE PLANS TO SEND A DIRECT MAILING IN AN ATTEMPT TO REACH THAT GOAL. HOPEFULLY 1986 WILL SEE US ATTAIN IT.

THIS IS THE FIRST ISSUE IN WHICH I FIND MYSELF WITH A VERY "DELIGHTFUL PROBLEM". DELIGHTFUL BECAUSE IT REPRESENTS A SITUATION I HAD HOPED WOULD EVENTUALLY OCCUR. FOR THE FIRST TIME I HAVE SUCH AN ABUNDANCE OF MEMBER CONTRIBUTIONS THAT I HAVE ONLY ONE ARTICLE IN THIS ISSUE. GREAT.....I LOVE IT..... ACTUALLY THE ONLY REASON IT GOT IN WAS BECAUSE IT IS A CONTINUATION OF THE NIKON "M" ARTICLE IN NHS-9 AND I FELT THAT, SINCE I PROMISED ANOTHER INSTALLMENT IN THIS ISSUE, I DID HAVE TO INCLUDE IT. HOWEVER, I HAVE CUT IT TO ONLY TWO PAGES TO ALLOW AS MUCH ROOM AS IS POSSIBLE FOR THE TWO MAJOR ARTICLES I RECEIVED. THE FIRST WAS PROMISED IN NHS-9 AND I AM DELIGHTED TO ANNOUNCE THE FIRST INSTALLMENT IN WHAT

PROMISES TO BE A VERY DETAILED AND SCHOLARLY DISERTATION ON THE SCREW MOUNT NIKKORS. IT IS BEING DONE BY DR. RANDOL HOOPER, WHO HAS TO BE THE PREMIER COLLECTOR OF SCREW MOUNT NIKKORS IN THE WORLD. THESE "OTHER NIKKORS" ARE FASCINATING IN THAT THEY ARE NOT ONLY, IN MOST CASES, MUCH LESS COMMON THAN THEIR BAYONET COUNTERPARTS, BUT MANY WERE BEING MADE DURING THAT VERY EARLY PERIOD OF COLLABORATION BETWEEN N-K AND CANON, AND PREDATE THE RELEASE OF THE NIKON ONE. BECAUSE OF THIS MANY OF THESE EARLY LENSES ARE VERY RARE TODAY. DR. HOOPER HAS SENT ME SO MUCH MATERIAL THAT IT MAY TAKE AS MANY AS 4-5 MORE ISSUES OF THE JOURNAL TO COVER IT ALL. IN ADDITION TO HIS PHOTOS I WILL ALSO BE USING PHOTOS FROM OTHERS ONLY AS A SUPPLEMENT TO ILLUSTRATE VERSIONS DR. HOOPER HAS NOT SENT ME OR ADDITIONAL PHOTOS OF VARIOUS LENSES IN AN ATTEMPT TO MAKE THE ILLUSTRATIONS AS DETAILED AS THE COPY. I AM SURE THAT YOU WILL FIND THIS SERIES EXTREMELY INTERESTING, SINCE DR. HOOPER ALSO GOES INTO A GREAT DEAL OF HISTORY AS WELL AS HIS OWN PERSONAL OPINIONS ON THESE LENSES. THIS IS IMPORTANT SINCE HE IS ALSO A PROMINANT LEICA COLLECTOR AND I FOUND HIS COMPARISONS WITH LEICA OPTICS VERY INFORMATIVE.

I WAS NOT AWARE I WAS GOING TO RECEIVE THE SECOND MAJOR ITEM WHEN NHS-9 WENT TO PRESS. HOWEVER, IT WAS SO WELL DONE AND INTERESTING THAT I HAD TO RUN IT IN THIS ISSUE. IN ADDITION IT TIES IN SO WELL WITH THE HOOPER ARTICLE THAT THEY COMPLIMENT EACH OTHER AND REALLY BELONG TOGETHER. THIS SECOND ARTICLE IS A DETAILED LISTING, BE SERIAL NUMBERS, OF THE VERY EARLY NIKKORS MADE FOR THE PRE- AND POST-WAR CANON CAMERAS. IT WAS WRITTEN BY THE LEADING CANON EXPERT IN THE WORLD, NAMELY DR. PETER DECHERT. DR. DECHERT HAS LISTED EACH TYPE OF NIKKOR USED ON THE EARLY CANONS AND HAS EVEN CATALOGED THE CAMERA ON WHICH IT WAS FOUND. MOST OF THIS MATERIAL PREDATES THE NIKON ONE AND THE BEGINNING OF THE PRODUCTION OF THE BAYONET NIKKORS THAT MOST OF US ARE MORE FAMILIAR WITH. IT COVERS WHAT HAVE TO BE CALLED THE "EARLIEST NIKKORS" EVER MADE AND RANKS AS A TRULY HISTORICAL PAPER. MUCH OF THIS INFORMATION WAS EXTREMELY DIFFICULT TO COME BY BEFORE DR. DECHERT PUBLISHED HIS RECENT BOOK ON THE CANON RF CAMERAS. I FOUND IT EXTREMELY INTERESTING, AS I AM SURE YOU WILL.

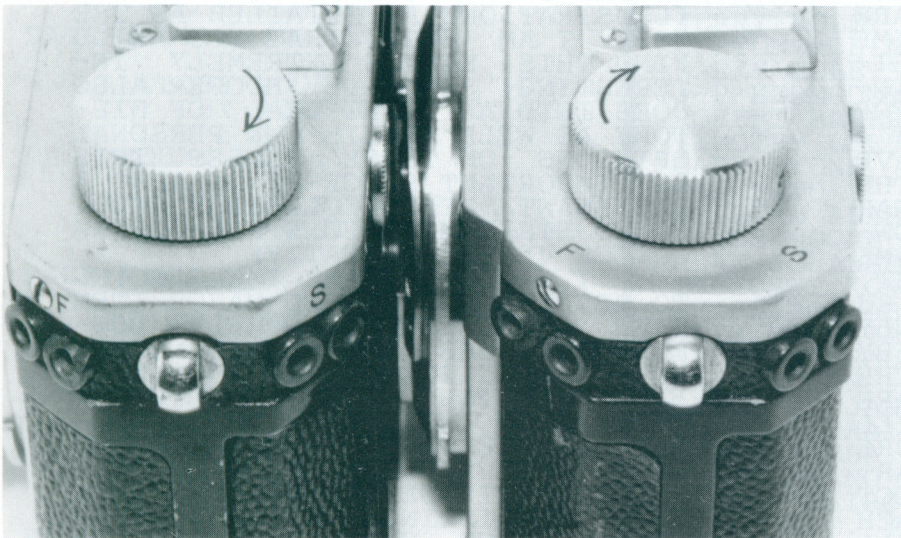
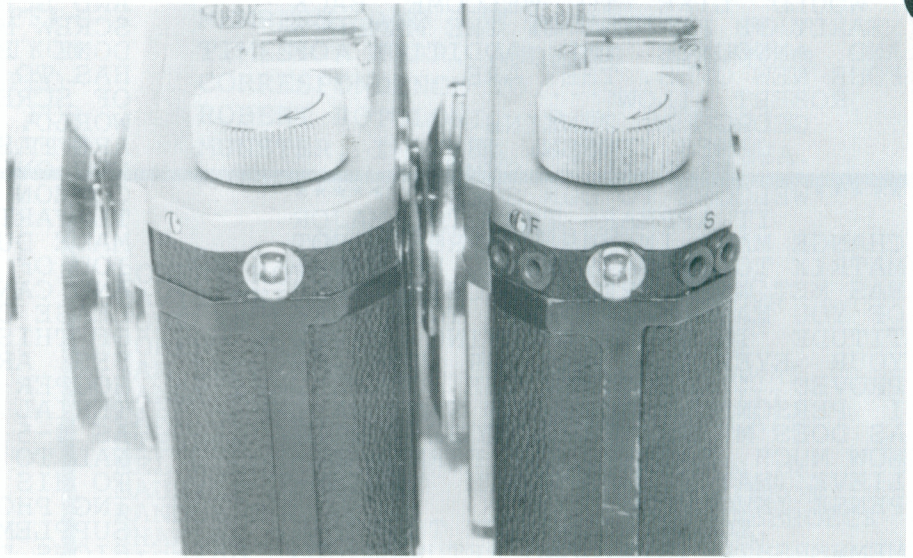
ROBERT ROTOLONI
EDITOR/PUBLISHER

A CLOSE LOOK AT THE NIKON "M"...PART II

BY ROBERT ROTOLONI

THE CAMERA ON THE LEFT IS NO. M6091889 AND IS UNSYNCHED JUST AS IT LEFT THE FACTORY. ON THE RIGHT IS NO. M6091975 WHICH POSSESSES THE ORIGINAL FACTORY SYNCH, IN THIS CASE WITH THE UNUSUAL "REDEYE" SOCKETS AS OPPOSED TO THE MUCH MORE COMMON BLACK TYPE. BESIDES THIS SINGLE FEATURE THE TWO ARE IDENTICAL. NOTE THAT THE "F AND S" ENGRAVINGS ARE ON THE SIDE EDGE OF THE TOP PLATE.

R. ROTOLONI

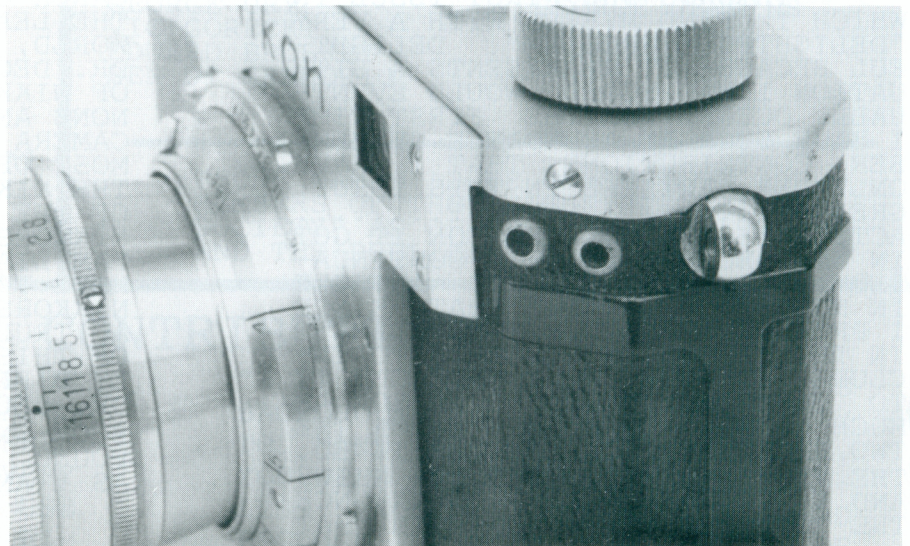


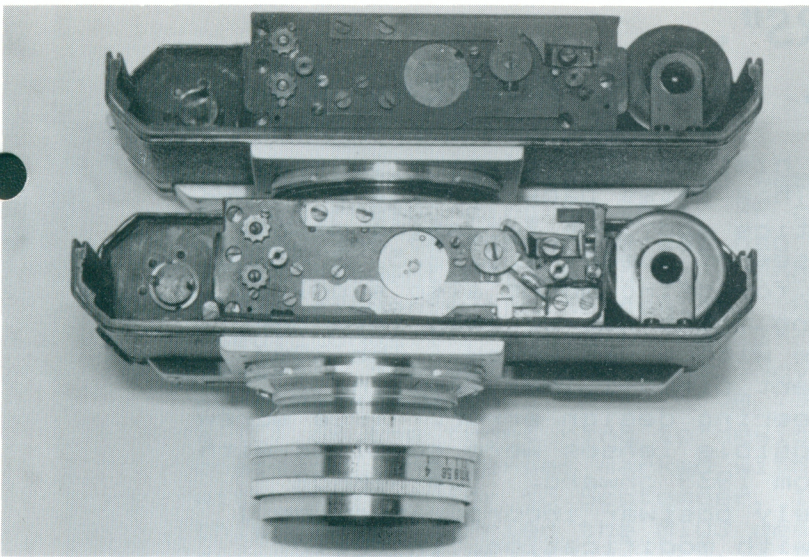
CAMERA BODY NO. M6091975 IS NOW ON THE LEFT WITH BODY NO. M6093508 ON THE RIGHT. BOTH CAMERAS HAVE RED SYNCH SOCKETS BUT NO. M6093508 HAS THE "F AND S" ENGRAVINGS ON THE EDGE OF THE TOP SURFACE THE TOP PLATE FOR BETTER VISIBILITY. ONE INTERESTING POINT IS THAT THE LETTERS ARE RED... THE VAST MAJORITY I HAVE SEEN HAVE HAD BLACK PAINTED LETTERS. THE RULE IS RED IS MUCH LESS COMMON.

R. ROTOLONI

COULD THIS BE A "HOMEMADE" SYNCH??? CAMERA IS M6092421. NOTE THE LACK OF ANY "F AND S" LETTERS AT ALL. THIS BODY ORIGINALLY LEFT THE FACTORY AS UNSYNCHED AND WAS SUBSEQUENTLY ADAPTED. BY WHOM??

T. KONNO

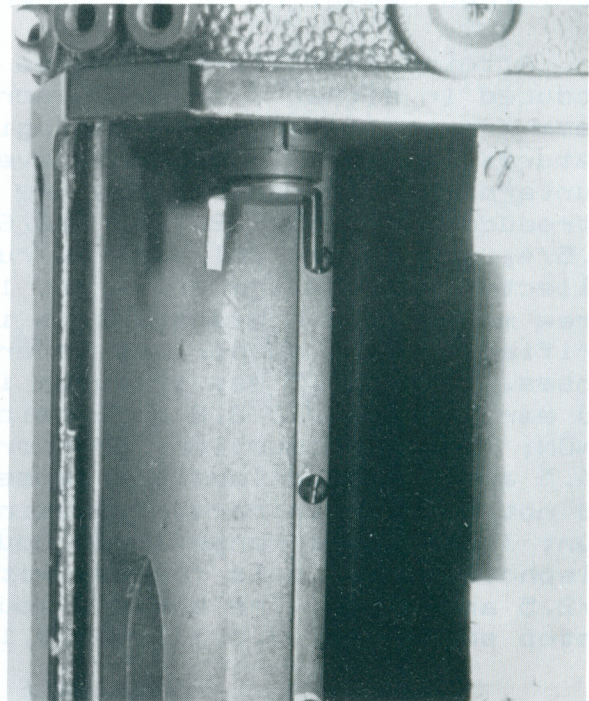
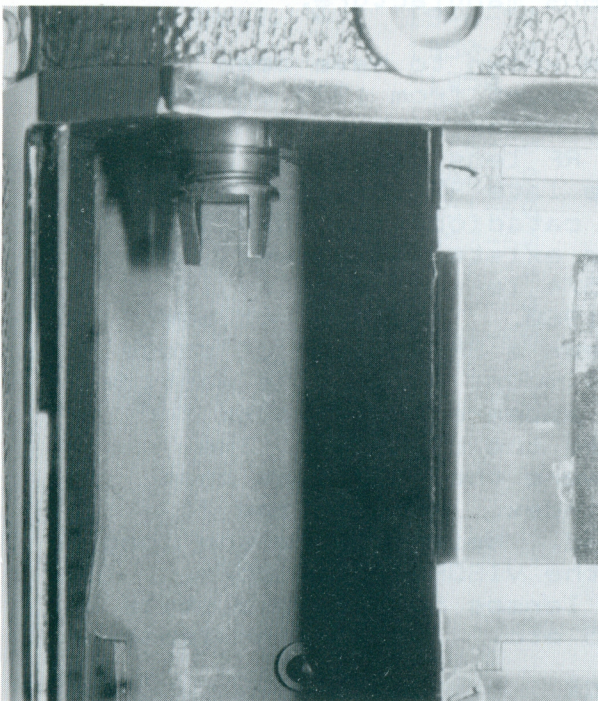
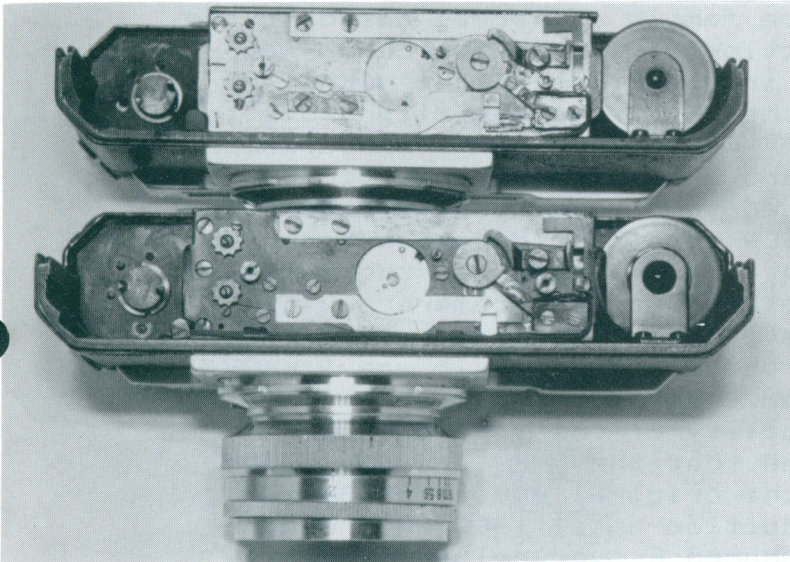




THE TOP PHOTO IS A COMPARISON OF THE SHUTTER CHASSIS PLATES OF AN UNSYNCHED BODY (M6091889-UPPER CAMERA) AND A MUCH LATER SYNCHED BODY (M6093923-LOWER CAMERA).

NOTE THE ADDITIONAL PARTS THAT ARE REQUIRED FOR SYNCHRONIZATION PARTICULARLY NEAR THE TAKE-UP SPOOL. THESE NEW PARTS OCCUPY A FORMERLY VACANT AREA. YOU MAY BE ABLE TO SEE THE SYNCH WIRES THAT RUN FROM THIS AREA ALONG THE FRONT EDGE OF THE BODY CASTING TO THE REWIND SIDE. NIKON CHOSE TO FIT THE SYNCH SOCKETS ON THE REWIND END, WHICH PERCIPITATED THE WIRES GOING FROM ONE END OF THE CAMERA TO THE OTHER. THE NEXT PHOTO AGAIN SHOWS M6093923, BUT THE UPPER CAMERA IS M6091975, WHICH IS ONE OF THE EARLIEST TO BE SEEN WITH "FACTORY" SYNCH. NOTE THAT THE SAME PARTS HAVE BEEN USED. THE CAMERA COULD HAVE BEEN ASSEMBLED OUT OF NUMERICAL ORDER (WHICH DID HAPPEN) OR IT MAY HAVE BEEN FACTORY RETROFITTED. HOWEVER, ALL PARTS, INCLUDING THE F AND S ENGRAVINGS, APPEAR TO BE ORIGINAL. BY THE WAY, M6091975 HAS THE LESS COMMON "RED-EYE" SYNCH SOCKETS. THE TWO REMAINING PHOTOS ILLUSTRATE THE FILM SUPPLY CHAMBER. NOTE THAT THE EARLY UNSYNCHED CAMERA HAS NO EVIDENCE OF ANY WIRES IN THIS CHAMBER. HOWEVER, THE LATER BODY (RIGHT) HAS AN ADDITIONAL METAL "TUBE" THAT HAS BEEN SCREWED DIRECTLY TO THE INNER SURFACE OF THE BODY CASTING. IT IS WITHIN THIS TUBE THAT ONE FINDS THE SYNCH WIRES. THEY COME OUT FROM UNDER THE SHUTTER CHASSIS PLATE, ENTER THE TUBE AND EXIT INTO THE UPPER BODY CASTING THROUGH A HOLE. THEY THEN ARE ATTACHED TO THE SYNCH SOCKETS, WHICH ARE ONLY AN INCH AWAY AT THIS POINT. THE "TUBE" CONCEALS THESE NEW WIRES.

R. ROTOLONI



THE "OTHER NIKKORS"...

BY DR. RANDOL HOOPER, MD.

NIPPON KOGAKU has a long history of producing lenses for other camera manufacturers. This dates back to 1934 when N-K developed and supplied the optics and lens focussing mounts for the HANSA CANON. 5cm lenses of speeds 4.5, 3.5, 2.0 and 1.5 bayoneted into the HANSA focussing mount also supplied by N-K. The separate focussing mount was screwed into the camera and was locked in place with a set screw. The 39mm threads had a slightly different pitch (1.1mm) from the LEICA (0.977mm) due to a engineering design error. True screw mount 5cm f4.5 and f3.5 collapsible lenses were supplied with this pitch for the CANON J from 1939 onward. 5cm NIKKOR lenses sold to CANON immediately postwar incorporated the J mount which CANON continued, with modification, in their early SERENAR lens series.

By 1946 N-K was heavily engaged in the development of the NIKON I with an appropriate family of lenses based on the CONTAX bayonet system. Production of lenses for CANON was gradually phased out with the introduction of the NIKKOR RF lenses. However, demand for the RF lenses was slight due to limited camera production. N-K was one of very few Japanese companies with the materials and expertise to domestically produce lenses so it was decided to devote surplus capacity to the manufacture of true LEICA screw mount optics based on the RF designs. These found a ready market with thousands of LEICA owners as well as with other Japanese camera manufacturers who, freed of patent restrictions, were beginning to produce clones of the LEICA III. It was NIKKOR SM optics used by war correspondents in Korea that established the initial credibility of the Japanese photo industry when it was discovered that the N-K lenses yielded results equal or superior to the original equipment German lenses. N-K continued SM production until 1960 when demand for lenses for the newly introduced F overwhelmed capacity and forced cessation of all other lens manufacture.

A total 23 different lenses are known to have been produced in either J or LEICA screw mount from 1939 onward. These are tabulated in chronological order with salient features listed. In general, every RF lens had a SM counterpart. The exceptions are the late RF lenses introduced in 1959: 2.1/4, 100/6.3 catadioptric, 35/4.5, 10.5/4, and 13.5/4 bellows. A rumor exists that a well known collector saw the the 2.1/4 and 10.5/4 lens on display in screw mount at N-K headquarters in 1960. This has not been verified and the author has never seen a SM version of those lenses. The 5/4.5 was produced in J mount only. The wartime and early postwar 5/3.5 collapsible appeared in J mount for CANON; later production incorporated the LEICA SM. The 5/4.5 and 5/3.5 collapsible lenses were the only ones that did not have an infrared focussing index. None of the J mount lenses were rangefinder coupled. Neither were the long telephoto lenses sold for use with the VISOFLEX I: 25/4, 18/2.5 and 50/5. The early J mount lenses had the old style f stop sequence: 3.5, 3.5, 6.3, 9, 12.5 etc. The earlier lenses

were all chrome; later ones were black or chrome with black trim corresponding to their RF counterparts. All postwar normal and telephoto lenses had a letter engraved on the front element retaining ring indicative of the number of elemn elements in the design. A Graeco-Roman system was used: Unus(1), Duo(2), Tres(3), Quattuor(4), Penta(5), Hexa(6), Septem(7), Octo(8), Novem(9). All wide angle optics were marked with a "W". From 1946 to 1957 all lenses carried a (C) on the front ring to designate the presence of a lens coating. The lenses marked with an asterisk were engraved with TOKYO prior to September, 1951. The telephoto lenses of this period carried the MIOJ designation either on the focussing cam(85/2), focussing mount(13.5/4) or the tripod foot(13.5/3.5). The pre 1945 lenses carried neither the TOKYO nor JAPAN markings.

NIKKOR SCREW MOUNT LENSES

Lens	Date	Angle of View	Number Elements	Filter Size	Near Focus
2.5/4	1953-60	80 30'	4	S34.6(VI)	3.5'
2.8/3.5	1952-60	74	6	S34.5	3.5'
3.5/3.5 *	1949-60	62	4	P36/S34.5	3.5'
3.5/2.5	1952-60	62	6	S34.5	3.5'
3.5/1.8	1956-60	62	7	S43	3.5'
3.5/3.5 Stereo	1956	45	4	S40.5	3.5'
5/4.5 Coll.	1939-42	46	4	P42	1 Mtr
5/3.5 Coll. *	1939-48	46	4	P36	3.5'
5/3.5	1951-55	46	4	S34.5	1.5'
5/3.5 Macro	1956-60	46	5	S34.5	1.5'
5/2 Coll. *	1946-50	46	6	S40.5(VI)	3.5'
5/2 *	1950-60	46	6	S40.5(VI)	1.5'
5/1.5 *	1950	46	7	S40.5(VI)	1.5'
5/1.4 *	1950-60	46	7	S43(VII)	1.5'
5/1.1	1956-60	46	9	S62	3.5'
8.5/2 *	1948-50	28 30'	5	S48(VII)	3.5'
8.5/1.5	1951-60	28 30'	7	S58(VIII)	3.5'
10.5/2.5	1953-60	23 20'	5	S52(VII)	4'
13.5/4 *	1946-50	18	4	S40.5(VI)	5'
13.5/3.5 *	1950-60	18	4	S43(VII)	5'
18/2.5 VISO	1953-60	13 40'	7	S82	7'
25/4 VISO	1951-60	10	4	S68(IX)	10'
50/5 VISO	1952-60	5	3	S110	25'

WIDE ANGLE OPTICS

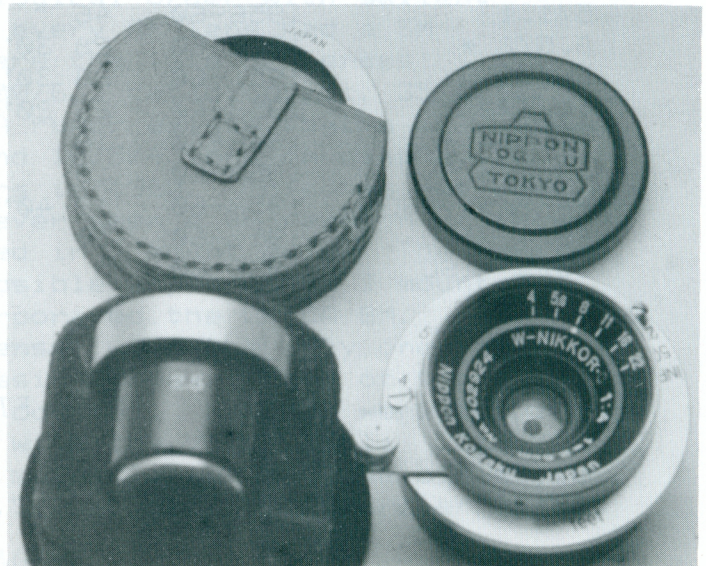
2.5/4 W NIKKOR—This lens, introduced in 1953, covered an angle of of 82 degrees and was a four element symmetric design in a chrome plated brass rotary mount. The configuration appears identical to that of the ZEISS JENA TOPOGON 25/4 lens constructed in East Germany for the CONTAX from 1950 until 1953. The 2.5/4 was supplied in a fitted velour lined leather case along along with a 2.5 cm optical finder and 34.5mm chrome lens shade. The finder had no parallax correction; the shade had provision for a series VI filter. A special deep rear lens cap was provided to protect the protruding rear element; the front cap was a push on 36mm black metal design with N-K Tokyo logo. F stops to f22 were internally adjusted in a somewhat awkward fashion. Close focus was the 3.5 feet near limit of the LEICA rangefinder. Serial number range was 402XXX-403XXX. Minimum f stop was f22. This very compact lens had impressive optical performance. hence, it is in high demand by LEICA RF users. This, plus a relatively low production run, makes it difficult for the collector to obtain the 2.5/4 in mint condition.

2.8/3.5 W NIKKOR—Introduced in 1952, this six element 4 group modified Gauss design was a excellent performer that easily surpassed the 28/6.3 and 28/5.6 lenses available from LEITZ. (The later 28/5.6 SUMMARON adopted a similar formula with less spectacular results.) This, plus a modest price, assured a steady demand for the lens. Only one version is known: a chrome plated brass rotary mount with black plastic front. Two serial number batches are known: 347XXX and 713XXX. Minimum f stop was f22; near focus was 3.5 feet. A chrome optical finder with parallax correction to three feet was available. Sometimes a capital "L" is found engraved on the foot. 2.8 is on the top. No lens hood is known to have been supplied for use with the SM 2.8; the 34.5mm front diameter and 74 degree angle of view permit the use of the LEITZ 28mm hood SOOHN—if you can find it! The 2.8/3.5 had a significant production run over at least seven years and is available, though uncommon, to the collector in excellent condition.

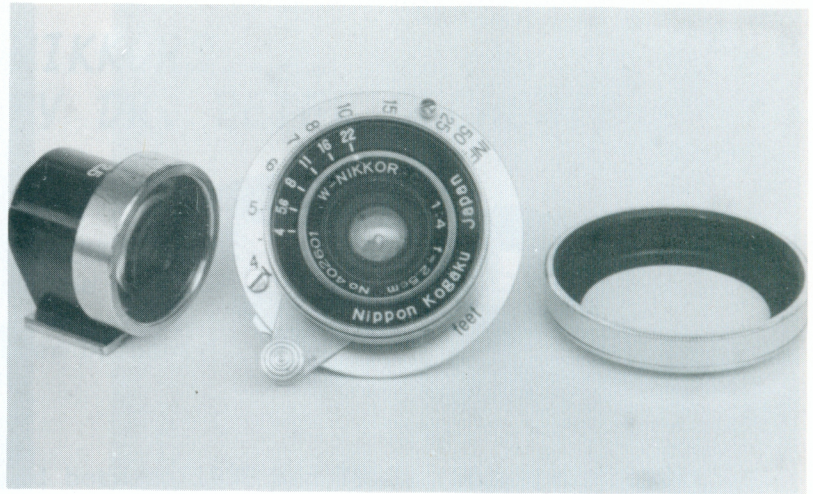
IN THIS PHOTO ARE THE FOUR BASIC PARTS ONE WOULD OBTAIN WHEN PURCHASING THE 25MM NIKKOR. ALL THAT YOU SEE HERE WILL FIT SNUGLY IN THE APPROPRIATE CASE. NOTE THE VELVETEEN CRADLE FOR THE FINDER AND THE CUSTOM LEATHER SLEEVE FOR THE LENS SHADE. ALSO SHOWN HERE IS THE 36MM PUSH ON FRONT LENS CAP. LENS IS NO.402924.

DR. HOOPER

PAGE SIX



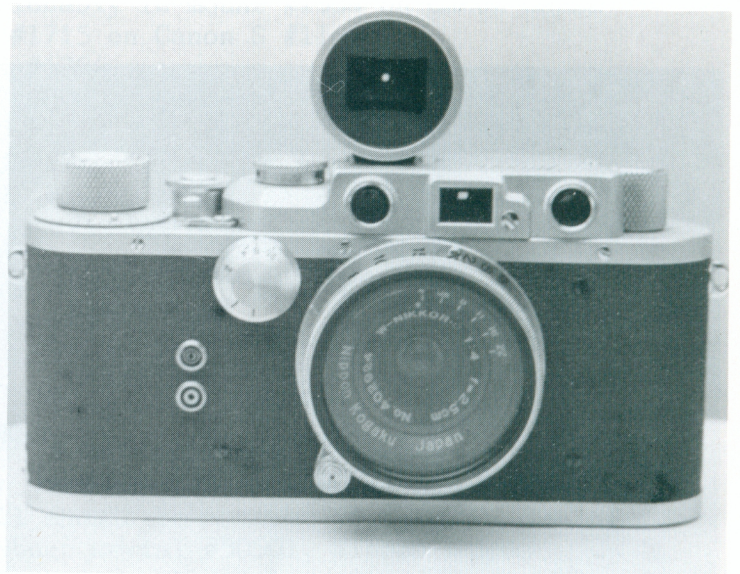
THE "OTHER NIKKORS"...

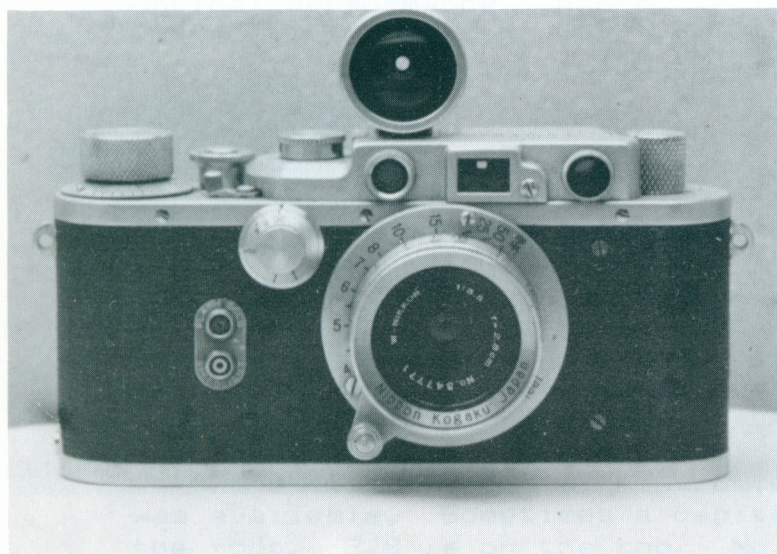
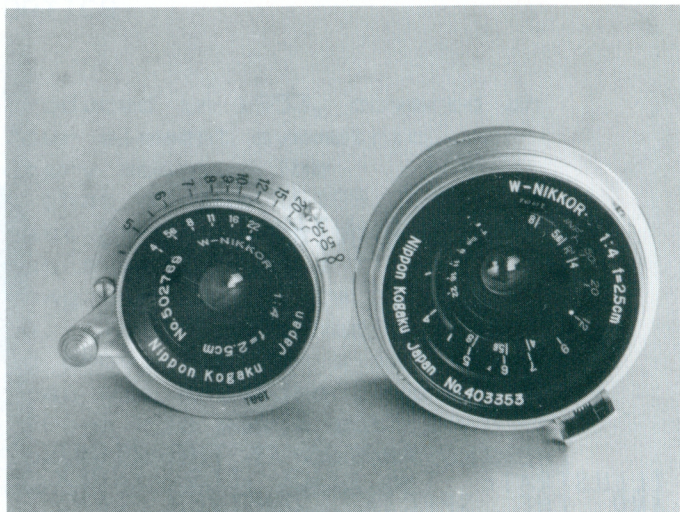


THE TWO PHOTOS AT THE RIGHT ILLUSTRATE THE LENS, ITS FINDER AND THE SPECIAL COMBINED LENS SHADE/FILTER HOLDER. THIS SHADE IS UNMARKED AND MANY HAVE BEEN LOST OR DAMAGED OVER THE YEARS. NOTE HOW COMPACT THIS LENS IS EVEN WHEN THE SHADE IS MOUNTED. ALSO NOTE THAT THE LETTER "L" IS ENGRAVED ON THE BASE OF THE FINDER. THIS IS USUALLY THE CASE WHEN A SCREW MOUNT NIKKOR IS OBTAINED WITH ITS ORIGINAL FINDER. THE "L" OBVIOUSLY MEANS "FOR LEICA". WHETHER OR NOT THE FINDER ACTUALLY DIFFERS FROM THOSE SOLD FOR THE BAYONET LENSES I DO NOT KNOW AT THIS TIME. T.KONNO.



THE TWO LOWER PHOTOS SHOW LENS NO. 402924 MOUNTED ON A NICCA 3-S BODY. THE COMPACTNESS OF THIS OUTFIT IS OBVIOUS HERE, AND ONE CAN SURMISE HOW PLEASANT IT MUST BE TO ACTUALLY SHOOT WITH THIS SET-UP. IN THE FRONTAL VIEW A FILTER IS PRESENT AND HELD IN PLACE BY THE SPECIAL LENS SHADE. DR.HOOPER.





THE TWO PHOTOS AT THE TOP OF THE PAGE BEAUTIFULLY ILLUSTRATE THE IMMENSE DIFFERENCES BETWEEN THE MOUNTS USED FOR THE SCREW AND BAYONET VERSIONS OF THE 25MM/F4 NIKKOR. KEEP IN MIND THAT THE OPTICS ARE IDENTICAL AND THAT THIS EXTREME DISPARITY IS CAUSED ENTIRELY BY THE MOUNT. WHAT IS INTERESTING IS THAT THE LARGER NIKON VERSION IS STILL EXTREMELY COMPACT WHEN MOUNTED ON THE LARGER NIKON BODIES. LIKEWISE THE SCREW MOUNT LENS PERFECTLY COMPLIMENTS THE SHAPE AND SIZE OF THE LEICA-TYPE BODIES IT WAS INTENDED FOR. THE LENS ON THE LEFT IS NO. 502769 (YES THEY DID GO THIS HIGH BUT I HAVE YET TO SEE A BAYONET LENS WITH SUCH A LATE NUMBER). ON THE RIGHT IS LENS NO. 403353. FROM THESE PHOTOS ONE CAN SEE WHY THE SCREW MOUNT LENS REQUIRED ITS OWN ACCESSORIES.

R. HARRIS



THE TWO LOWER PHOTOS ARE OF THE 28MM F3.5 NIKKOR. IT IS MOUNTED ON A CONTEMPORARY TOWER TYPE 3-S BODY AND HAS THE SERIAL NUMBER 347771. A BIT LARGER THAN THE 25MM LENS, IT STILL QUALIFIES AS AN EXTREMELY COMPACT LENS. WHEN MOUNTED IT PROTRUDES ABOUT THE SAME AS THE 25MM WITH ITS SHADE. THE FINDER FOR THE 28MM NIKKORS POSSESSED A PARALLAX CORRECTION DIAL AT THE REAR OF THE HOUSING UNLIKE THE 25MM VERSION WHICH HAD NO SUCH FEATURE (AND PROBABLY DIDNT NEED IT). HOWEVER, THE 28MM FINDER WAS ONLY MADE IN A CHROME FINISH.

DR. HOOPER.

THE EARLIEST NIKKORS...

BY DR. PETER DECHERT

PRE-1950 NIKKOR LENSES
Not Mounted for Use on Nikon Cameras

Peter Dechert

I. NIKKOR 5cm. F4.5 LENSES

These lenses were all manufactured between 1938 and 1942, inclusive, so far as can now be determined. Where bad or doubtful match is indicated, serious reasons exist to doubt that the specific lens was originally mated to the camera or mount indicated. Other present-day matches may also be incorrect. Listed in numerical order:

5016	Canon J thread, on Canon JS #1970
5018	Canon J thread, on Canon J #2001
5034	Canon S bayonet, now in mount #889 on Canon S #10914 (bad match)
5058	Canon S bayonet, now in mount #2875 (doubtful match)
5080	Canon S bayonet, in mount #1950 on Canon NS #10824
5096	Canon S bayonet, in mount #1941 on Canon NS #10923
50107	Canon S bayonet, in mount #4111 on Canon S #12193
50118	Canon J thread, on Canon JS #1961
50136	Canon S bayonet, no record of original mating camera or mount
50139	Canon S bayonet, in mount #1619 on Canon S #10922
50188	Canon S bayonet, mount number unknown on Canon NS #11760
50193	Canon S bayonet, in mount #3359 on Canon NS #11565
50224	Canon S bayonet, in mount #1733 on Canon S #11535 (bad match)
50230	Canon J thread, on Canon J #1707
50250	Canon S bayonet, in mount #3163 on Canon S #11551
50264	Canon S bayonet, now incorrectly in mount #962 on Canon Hansa
50301	Canon S bayonet, now questionably in mount #1534 on Canon Hansa
50323	Canon S bayonet, in mount #1715 on Canon S #11460
50327	Canon J thread, on Canon J #1764
50349	Canon S bayonet, in mount #2629 on Canon NS #11398 (bad match)
50364	Canon J thread, on Canon J #1719
50432	Canon J thread, on Canon J #1711
50520	Canon J thread, on Canon JS #1996
50520	Canon S bayonet, probably remounted to mount #1016, not on camera
50550	Canon S bayonet, in mount #2825 on Canon NS #11732
50566	Canon S bayonet, in mount #2579 on Canon NS #11685

II. NIKKOR 5cm. F3.5 LENSES

1. Unnumbered F 3.5 Lenses: Almost all of these have black faces with white lettering. They were the earliest Nikkor standard lenses for the Canon/NK Hansa, made during 1935 and 1936, and all should be mounted on this version of the Hansa model. Since numbering began about serial #50501, Nippon Kogaku presumably estimated total production of the unnumbered lenses at no more than 500 units, and in fact probably considerably fewer than that found their way into use. There is no way to distinguish one of these lenses from another apart from the few having unusual characteristics, such as chrome or nickel faces.

2. Numbered F3.5 Lenses with 50- Prefix: This was the next series, lasting into 1944. Almost all except as noted have some form of chrome face with black lettering. The style of the mount changed a number of times during the production years, and styles are not indicated here. The numbering proceeded consistently with each change. We should note that almost without exception Canon Hansa-type cameras had no distinguishing serial numbers; thus none are listed below. Canon Hansa and Canon S bayonet mounts are essentially the same, and many lenses have lost their original camera and mount mates during the years (or vice versa, depending on your point of view). Where certainty or doubt exists that a lens was not the original mate with the listed camera and/or mount it is indicated in the following numerical listing by the note BAD or DOUBT:

50502 Canon Hansa bayonet, in mount #940 on Canon Hansa "Original" version
50513 Anachronistic black face, in bayonet mount #712 on Canon Hansa
50538 Anachronistic black face, in bayonet mount #2477 on Hansa - DOUBT
50567 Canon Hansa bayonet, in mount #873 on Hansa
50576 Canon Hansa bayonet, shown in 10/1937 advertising photo
50590 Canon Hansa bayonet, in mount #1015 on Hansa
50600 Canon Hansa bayonet, in mount #2316 on Hansa - DOUBT
50606 Canon Hansa bayonet, in mount #858 on Hansa
50619 Canon Hansa bayonet, in mount #1009 on Hansa
50630 Canon Hansa bayonet, now in mount #2348 on Canon S #10617 - BAD
50645 Canon Hansa bayonet, now in mount #306 on Hansa - GRAVE DOUBT
50662 Canon Hansa bayonet, in mount #909 on Hansa
50673 Canon Hansa bayonet, in mount #915 on Hansa
50722 Canon Hansa bayonet, in mount #1000 on Hansa
50724 Canon Hansa bayonet, shown in 7/1938 advertising photo
50731 Canon Hansa bayonet, in mount #988 on Hansa
50788 Canon Hansa bayonet, in mount #1086 on Hansa
50795 Canon Hansa bayonet, in mount #1235 on Hansa
50823 Canon Hansa bayonet, in mount #1136 on Hansa
50860 Canon Hansa bayonet, in mount #1156 on Hansa
50898 Canon Hansa bayonet, in mount #1262 on Hansa "Original" version
50935 Canon Hansa bayonet, shown in 9/1938 advertising photo on "Original"
50950 Canon Hansa bayonet, now in mount #2464 on Canon S #11390 - BAD
50988 Canon Hansa bayonet, in mount #1536 on Hansa "Original" version
501046 Canon Hansa bayonet, in mount #1449 on Hansa
501092 Canon Hansa bayonet, in mount #5199 on Hansa (possibly postwar?)
501105 Canon Hansa bayonet, in mount #2187 on Hansa "Original" version
501112 Canon Hansa bayonet, in mount #1415 on Hansa
501216 Canon Hansa bayonet, in mount #2109 on Hansa "Original" version
501222 Canon Hansa bayonet, in mount #1525 on Hansa "Original" version
501224 Canon Hansa bayonet, in mount #2319 on Hansa "Original" version
501330 Canon bayonet, in mount #2117 (may have originated on early Canon S)
501331 Canon bayonet, in mount #3158 on Canon S #11401 - DOUBT?
501333 Canon bayonet, in mount #2272 on S #10624
501336 Canon bayonet, in mount #3236 on S #11955
501340 Canon bayonet, shown in 6/1940 advertising photo
501404 Canon bayonet, in mount #367 on Hansa - BAD
501419 Canon bayonet, shown in 4/1940 advertising photo on Canon S
501423 Anachronistic black face, Canon bayonet, in mount #5156 on Canon Hansa
"Original" version - possible postwar combination?

501441 Canon bayonet, in mount #2189 on S #10608
 501445 Canon bayonet, mount number unknown on S #10589
 501455 Canon bayonet, in mount #1688 on S #11814
 501477 Canon bayonet, in mount #1634 on S #10831
 501497 Canon bayonet, in mount #2916 (lens may be misnumbered 510497)
 501498 Canon bayonet, in mount #2585 on S #11569
 501523 Canon bayonet, in mount #1316 on S #10919 - DOUBT
 501527 Canon bayonet, now in mount #1515 on Hansa - BAD
 501527 (Alternative Data) from mount #1537 on S #10929
 501544 Canon bayonet, in mount #2629, once on Canon S #11398
 501567 Canon bayonet, in mount #1944 on Canon NS #10821
 501579 Canon bayonet, in mount 3129 on S #11526
 501582 Canon bayonet, in mount #1651 on S #10920
 501587 Canon bayonet, mount number unknown on S #10945
 501659 Canon bayonet, in mount #2969 on S #11343
 501682 Canon bayonet, in mount #2939 on S #11471
 501707 Canon bayonet, in mount #2982 on S #11340
 501720 Canon bayonet, in mount #3050 on S #11811
 501733 Canon bayonet, in mount #804 on S #11035 (whence came that very early
 mount?)
 501742 Canon bayonet, in mount #3188 on S #11961
 501771 Canon bayonet, in mount #3093 on S #11834
 501838 Canon bayonet, in mount #3665 on S #11931
 501839 Canon bayonet, in mount #1220 on S #11021
 501861 Canon bayonet, mount number unknown on S #11007
 501883 Canon J thread, on Canon J #2044
 501909 Canon bayonet, in mount #4123 on (postwar?) S #12191
 501940 Canon bayonet, in mount #4251 on (probably postwar) S #12444
 501943 Canon bayonet, in mount #3306 on S #12094
 501973 Canon bayonet, in mount #4175 on (probably postwar) S #12320
 501982 Canon bayonet, in mount #1979 on postwar S #12539
 502051 Canon bayonet, in mount #3326 on S #12053
 502052 Canon bayonet, in mount #4075 on S #12033
 502139 Canon bayonet, in mount #2694 on S #11918
 502158 Canon bayonet, in mount #4126 on (probably postwar) S #12266
 502211 Canon bayonet, in mount #1738 on postwar S #12270
 502218 Canon bayonet, in mount #1763 on postwar S #12291
 502232 Canon bayonet, in mount #4331 on postwar S #12368
 502252 Canon J thread, associated with Canon J #1995
 502294 Canon J thread, on Canon J-II #8183

3. Numbered F3.5 Lenses with 46- Prefix: These lenses were made in response to a manufacturing order dated June, 1944, so far as is presently known. Most remained unused until after the war:

460013 Canon J thread, on Canon J-II #8252
 460058 Canon J thread, on J-II #8137
 460070 Canon J thread, on J-II #8242
 460082 Canon J thread, on early Canon S-II #15273, but also somehow
 associated with Canon J #1995
 460106 Canon S bayonet, mount number unknown on Canon S #11746 - DOUBT
 460183 Canon J thread, on Canon J-II #8556
 460200 Canon J thread, on Canon J-II #8428

460203 Canon S bayonet, in mount #3839 but not mounted on camera
 460209 Canon J thread, on J-II #8385
 460268 Canon S bayonet, mount number unknown on postwar S #13013
 460344 Canon J thread, on J-II #8112
 460348 Canon J thread, on J-II #8365

4. Numbered F3.5 Lenses with 57- Prefix: Most of these lenses seem to have been made after the war in response to a production order of July 1945, just before the war ended. They were not mounted onto Canon cameras until 1946, but note that at least one was used on an early postwar Nippon camera whenever it was made. Their serials took up where the 46- series ended, but using the new prefix:

570395 Canon J thread, on J-II #8373
 570433 Leica thread, on Nippon camera #20813
 570435 Canon S bayonet, in mount #3841 on postwar S #14108
 570453 Canon J thread, on J-II #8497
 570409 Canon J thread, on J-II #8554
 570467 Canon J thread, on J-II #8454
 570519 - QC Canon J thread, on early S-II #15310. THIS IS THE FIRST -QC SUFFIX LENS IN MY RECORDS
 570587 - QC Canon J thread, on J-II #8521
 570606 - QQ Canon J thread, on J-II #8564, and truly marked "-QQ"
 570932 - QC Semi-Leica thread, on Canon S-II #15731
 571003 - QC Semi-Leica thread on early Canon S-II #15288. This is the only lens so far known to me with 571- prefix.

5. Numbered F3.5 Lenses with 610- Prefix: These lenses were made in response to a production order dated October 1946. Except as noted they are in the first Canon version of the Leica Thread, above called Semi-Leica. All are marked as "-QC" coated. Most are found on Canon S-II cameras made in 1947, and the list here is only of observed lens numbers without their associated cameras:

61090 (The numbering probably continued direct from the 57- series after dropping the 571- and adding 610)
 610143 610208 610422 (this lens is on a prototype Canon, #12248)
 610195 610219

6. Numbered F3.5 Lenses with 705- Prefix: These lenses were made in response to a production order dated May 1947 and some, including the six-digit ones on the following list, were used on Canon S-II (Semi-Leica thread) cameras made in 1947 and 1948. The seven-digit lenses were almost certainly intended either for Nicca cameras or for sale as replacements to owners of earlier cameras. The numbering appears to have started from scratch again with this series, rather than continuing down from the 610- series; thus there may have been an alteration in the lens design that was first used on this series of lenses.

70590	705189	705334	705941	7052589
705175	705203	705660	7052062	
705186	705208	705671	7052252	

III. NIKKOR 5cm. F2.8 LENSES

These lenses were made between 1938 and 1942. All serials began with the 50-prefix, as did all the early 50mm lenses of all apertures:

5094 Canon bayonet, in mount #2571 on Canon S #11589
50101 Canon bayonet, in mount #4317 on S #12505 - DOUBT
50123 Canon bayonet, in mount #3222 on S #11917
50157 Canon bayonet, in mount #1671 on postwar S #12342 - BAD
50212 Canon bayonet, in mount #2483 on S #11459. - NOTE that this is the only Nippon Kogaku lens in a Canon camera mount known to me that is marked "Nikko" instead of "Nikkor"
50218 Canon bayonet, in mount #1635 on S #10909
50252 Canon bayonet, in mount #2827 on Japanese Navy Model S #126
50297 Canon bayonet, in mount #1903 on S #10853
50300 Canon bayonet, replaced into mount #4207 on postwar S #12460

IV. NIKKOR 5cm. F2 LENSES:

1. First Series: These lenses have the F-stop setting ring inside the front lip of the lens mount, and were made 1938-1939. All were made in Canon bayonet mounts, and at first the F2 was intended to be the primary standard lens for the Canon S camera when it was introduced at the end of 1938:

5015 shown in advertising photo on early S in March 1939
5020 Canon bayonet, in mount #2101 on very early S #10527
5028 Canon bayonet, in mount #2214 on S #10600
5029 Canon bayonet, in mount #2309 on S #10719
5044 Canon bayonet, in mount #2182 on S #10544

2. Standard Series: These lenses were marked "Nikkor" and had the F-stop ring on the outside of the front of the lensmount. They were probably made sporadically between 1939 and 1942. Their serial numbers continued from the end of the first series:

5067 Canon bayonet, in mount #3325 on S #11981 - DOUBT
5086 Canon bayonet, in mount #1925 on S #10788
50123 Canon bayonet, in mount #1649 on S #10941
50196 Canon bayonet, in mount #2875 on Japanese Navy Model S #121
50202 Canon bayonet, in mount #3311 on S #11324
50251 Canon bayonet, in mount #3146 on S #11350
50261 Canon bayonet, in mount #2562 on S #11806
50279 Canon bayonet, in mount #2014 on postwar S #12345 - SOME DOUBT: this combination may have been first assembled after the war, but it also may have been put together later. It now belongs to a well-known Japanese collector.
50281 Canon bayonet, in mount #2592 on S #11759
50375 Canon bayonet, in mount #1705 but apparently never on a camera
50383 Canon bayonet, in mount #4018 on S #12187 (possible postwar assembly)

3. Regno Series: These lenses were marked "Regno-Nikkor." Regno has to do with X-Ray technology, and these lenses were presumably originally made for close-up use with Seiki Kogaku's early X-Ray camera, or possibly that of another maker, though no example in the mounting for that camera has been found. The Regno F2 lenses have one fewer elements in the rear group than do the standard F2 Nikkors. Some of them may have been mounted during wartime to provide substitutes for the discontinued standard F2 lenses, for general-purpose photography, but it seems equally possible that they remained in storage after the war and only then were put into mounts in order to provide ostensibly "fast" lenses for some of the small immediate postwar production (from existing parts) of Canon S cameras. At first the Regnos continued the Standard Series numbering (these are the scarcest), then switched to their own sequence. This entire series, whatever the serial type, is extremely rare:

50445	Canon bayonet, in mount #3139 on S #11428 - SOME DOUBT
141111A	Canon bayonet, in mount #4290 on postwar S #12489 - DOUBT
141115A	Canon bayonet, in mount #4252 on postwar S #12448 - DOUBT
141121A	Canon bayonet, in mount #1189 on S #10978 - DOUBT
141139A	Canon bayonet, not mounted when first collected
(unknown #)	Canon bayonet, in mount #4320 on postwar S #12323 - DOUBT

4. Early Postwar Collapsible Nikkor F2 Leica-Thread Series: None of these lenses was ever supplied as normal equipment on any model Canon. Most of the following numbers have already appeared in the NIKON JOURNAL:

8111120 - apparently original mate of Nicca Type-3 #24679
 8111177
 8111465 8111914
 8111882 8112470

EDITOR'S NOTE

THE FOLLOWING NUMBERS ARE ADDITIONS TO THE ABOVE LISTS. THEY REPRESENT NUMBERS THAT ARE IN MY LISTS AND ARE OFFERED HERE ONLY AS A SUPPLEMENT TO PETERS FINE ARTICLE. NONE ARE IN NIKON MOUNT.

50MM. F3.5 NIKKOR LENSES.....		
501850	502131	502189
502253	610427	70555
70578	70589	705584
705734	7051653	7051756
7051973	7052102	7052137
7052722		

50MM. F2.0 NIKKOR LENSES.....		
618480	708454	806418
806443	806511	806517
811239	811559	8111309
8111541	8111559	8111630
8111825	8111903	8112121
8112279	8112306	8112308
8112309	8112329	8112622
8112761	8112979	

ON THE FOLLOWING PAGE IS A LETTER FROM MEMBER JOHN BAIRD. NOT ONLY DOES IT TIE IN WITH THE TSUYOSHI KONNO ARTICLE IN NHS-9, BUT ALSO WITH THE PETER DECHERT ARTICLE IN THIS ISSUE. THEREFORE, I HAVE DECIDED TO RUN IT HERE RATHER THAN ON THE "LETTERS" PAGE SINCE IT SEEMS TO ME TO BE MORE APPROPRIATE IN THIS LOCATION. I THINK YOU WILL FIND IT VERY INTERESTING. I WOULD LIKE TO EXPRESS MY THANKS TO TSUYOSHI KONNO, PETER DECHERT AND JOHN BAIRD FOR INFORMATION THAT WAS VIRTUALLY UNKNOWN TO THE NIKON COLLECTOR AS RECENTLY AS ONE YEAR AGO.

DEAR BOB,

I HAVE BEEN DOING SOME RESEARCH FOR OTHER WRITINGS AND I RAN ACROSS SOME INTERESTING INFORMATION WHICH TIES INTO THE LAST JOURNAL. IT PRIMARILY CONCERNS EARLY LENS RESEARCH AND PRODUCTION AT NIPPON KOGAKU. I HOPE YOU FIND IT USEFUL.....

AS A RESULT OF WW-I, THERE WAS A PUSH BY THE JAPANESE TO MAKE THE NATION MORE INDUSTRIALLY SELF-SUFFICIENT. IN THE TAISHO ERA (1911-26) RESEARCH AND DESIGN FOR JAPANESE MILITARY USES OF OPTICAL INSTRUMENTS DIRECTLY INFLUENCED THE DOMESTIC CAMERA MAKERS AS WELL. FIRMS LIKE NIPPON KOGAKU, TOKYO KOGAKU, ASAHI KOGAKU AND OTHERS WERE ESTABLISHED TO CONDUCT OPTICAL RESEARCH AND DEVELOPMENT UNDER THE DIRECTION OF THE IMPERIAL JAPANESE NAVY.

NIPPON KOGAKU WAS FOUNDED IN 1917 WITH THE CONSOLIDATION OF THREE OTHER OPTICAL HOUSES..... IWAKI GLASS SEISAKU-SHO, TOKYO KEIKI AND FUJII LENS SEIZO SHO. THE LAST WAS FOUNDED BY R. FUJII IN 1908, AFTER HE HAD STUDIED OPTICS IN EUROPE. IN EITHER 1921 OR 22, EIGHT GERMAN TECHNICIANS WERE IMPORTED BY N-K TO SET UP GLASS PRODUCTION, DESIGNING AND LENS FABRICATION. ONE GERMAN BY THE NAME OF H. ACHT STAYED FOR NEARLY 8 YEARS, THREE YEARS AFTER THE OTHERS HAD RETURNED TO EUROPE. DURING THIS TIME HE DESIGNED SEVERAL LENSES INCLUDING THE FLIEGER OBJECTIVE IN A VARIETY OF FOCAL LENGTHS (75MM UP TO 500MM) AND DIFFERENT SPEEDS. AFTER HE LEFT IN 1929, KAKUNO SUNAYAMA REPLACED HIM AS LENS DESIGNER AND SOON HAD PERFECTED SEVERAL LENSES, NAMELY THE TRIMAR LENS AND, IN 1931, THE ANYTAR. THIS LAST OPTIC WAS A 120MM/F4.5 LENS. IN THE YEARS 1930-32 N-K PURCHASED SOME 20 LILY HAND CAMERAS FROM KONISHI HOTEN (KONICA) AND FITTED THEM WITH THIS LENS. THE ANYTAR WAS A TESSAR TYPE AND FITTED WITH A COMPUR LEAF SHUTTER. IN 1932 THE WORD "NIKKOR" WAS SELECTED BY THE COMPANY AS THEIR BRAND NAME. BETWEEN 1933-35 THE 1ST NIKKOR LENS APPEARED ON ANOTHER KONISHI MODEL..... THE IDEA HAND CAMERA. IT WAS A 105MM F4.5 LENS AGAIN FITTED WITH A COMPUR SHUTTER. IN 1935 THE 1ST NIKKOR LENS FOR A MINIATURE TYPE CAMERA WAS FITTED TO THE ORIGINAL HANSA CANON. FROM THIS POINT ON THE REST IS HISTORY.

JOHN BAIRD

NEW ADDRESS..PLEASE NOTE.

NEW ADDRESS.....
PETER SMITH
C/O FOTOCAMERA REPAIR
3095 SO. MILITARY TRAIL
LAKE WORTH, FLORIDA 33463

BEN DIGREGORIO
C/O KAMERA KRAFT
661 ANDERSON AVE.
CLIFFSIDE PARK, N.J. 07010-1919

*****NEW MEMBERS*****

ROBERT BILOW
119 EAST 141ST. STREET
RIVERDALE, ILL. 60627

GEORGE L. JENKINS
4121 ADMIRABLE DRIVE
RANCHO PALOS VERDES, CA. 90274

JAMES JENSEN, JR.
2776 DIAMOND STREET
SAN FRANCISCO, CA. 94131

MICHAEL H. SYMONS
3844 MERRIMAN DRIVE
VICTORIA, B.C.
CANADA V8P 2S9

BLACK IS BEAUTIFUL

PLEASE ADD THE FOLLOWING SERIAL NUMBERS TO OUR BLACK BODY LIST.
S2 NO.6170953 SP NO.6214197

Happy Holidays

AT THIS TIME I WOULD LIKE TO EXTEND MY PERSONAL WISHES TO ALL THE MEMBERS AND THEIR FAMILIES FOR A HEALTHY AND PROSPEROUS NEW YEAR. MAY YOU ALL FIND A "ONE".

Classified

WANTED..NIKON RF MOTOR DRIVE FOR 250(500 ON MODEL S3M) EXPOSURES; PANORAMA HEAD W/LEVEL: WIDEANGLE LENSES....SOLIGOR 35MM AND 28MM. F2.8, KINEGON 35MM AND OTHERS TO FIT NIKON/CONTAX CAMERAS. SUPER SPEED LENSES....ZUNOW 50MM F1.1, F1.3, 35MM F1.7 AND 100MM F2.0. TAMLA AKITO, SUGINAMI-KU KAMI-IGUSA 1-25-NO.11-NO.104 TOKYO 167 JAPAN

FOR SALE.....NIKON SP, NOT MINT BUT A GOOD STRONG EXCELLENT PLUS NO.6204635 W/BLACK 1.4...\$450.00 CY MEYER, 516 ESSEX DRIVE SIERRA VISTA, ARIZONA 85635 1-(602)-458-6928

WANTED...LATER SERIES BLACK 28MM COMPLETE (CAPS,ETC.) PLUS REFLEX HOUSING W/CABLES, IN MINT OR AS NEW COND.;S36 MOTOR W/CABLES; ORIGINAL SP INSTRUCTION BOOK IN CLEAN COND; BLACK SNAP-ON SHADE AND FRONT CAPS FOR 35/F1.8 AND 105/F2.5 LENSES. WILL BUY OR CAN TRADE FOR SCREW MOUNT LEICA GEAR (YES ANOTHER DISILLUSIONED LEICA COLLECTOR). LEICA IF W/50MM RED DIAL ELMAR,BL FINDER,FOCUS RANGE FINDER W/CS,ALL AS NEW...\$500.00 IIIIF RED DIAL "ST" BODY, MODEL 3 METER,CASE(DESIGNED TO HOLD BODY AND METER). AS NEW.....\$350.00 105/F6.3 MOUNTAIN ELMAR W/SHADE, CAPS,YELLOW FILTER AND RED TUBE CASE..EXCELLENT COND.....\$650.00 MIKE H.SYMONS, 3844 MERRIMAN DR, VICTORIA, B.C. CANADA, V8P-2S9 (604) 477-1867

WANTED...IN MINT CONDITION ONLY; BLACK 25MM. W/FINDER AND SHADE. 50MM F1.4 "OLYMPIC" NIKKOR LENS. BLACK S36 MOTOR DRIVE OUTFIT. JACK DUGREW, 86-31 125TH. ST., RICHMOND HILL,N.Y. 11418

FOR SALE OR TRADE.....35MM. F3.5 NIKKOR NO. 426194 MARKED "NIPPON KOGAKU TOKYO" AND MIOJ. CASE BUT NO CAPS. GLASS IS EX+,BARREL EX. \$99 + SHIPPING OR TRADE FOR 85MM F2.0 NIKKOR IN NIKON RF MOUNT IN COMPARABLE SHAPE WITH "TOKYO" ENGRAVING. MIOJ OR THE IMMEDIATE POST-MIOJ PERIOD OK, I.E. PAGES 118-120 IN ROTOLONI BOOK. BILL ADAMS, 23255-27TH. AVE. SO, KENT, WA. 98032. (206)824-0183

LETTERS

FROM MIKE SYMONS.....
AS A NEW MEMBER I WOULD LIKE TO COMMENT ON THE CONTROVERSY REGARDING WHETHER WE SHOULD EXPAND TO INCLUDE THE NIKON REFLEX SERIES. MY ANSWER TO THIS IS NO,AS IT WOULD, IN MY OPINION, STEER AWAY FROM YOUR ORIGINAL INTENT OF THIS PUBLICATION. I AM AFRAID THAT ONCE YOU START OPENING THE DOOR TO THE REFLEX MODELS THAT IN THE FUTURE WE WILL BE READING SELECTIONS EXPOUNDING THE VIRTUE OF THE SERIES "E" LENSES OR THE NIKON FG20 MODEL. I AM SURE THAT YOUR ORIGINAL DREAM WAS TO PUBLISH A HIGH CLASS MAGAZINE ON THE NIKON RF SERIES. LETS KEEP IT THAT WAY. SOME OF MY FAVORITE SECTIONS ARE.....
BOXED...LIKE NEW
MINOR REPAIRS
BLACK BODIES
LETTERS AND YOUR EDITORIALS
VARIATIONS OF ALL TYPES

FOTOCAMERA REPAIR, INC.

Used Cameras - Buy - Sell - Trade
Complete Repair Service

Machine Shop - We Make Parts
Custom Camera Covering

3095 So. Military Trail
Lake Worth, Fla. 33463

(305) 433-8434

WE CAN STRAIGHTEN DENTED FILTER RINGS.....REPAIR DIAPHRAGMS AND FOCUSING MOUNTS...RE-CEMENT LENS ELEMENTS..REPAIR,ADJUST AND LUBE BOTH RF AND REFLEX NIKON BODIES.

(NOTE THE NEW STREET ADDRESS..)

NEXT TIME

THE DEADLINE FOR THE NEXT ISSUE OF "THE NIKON JOURNAL" WILL BE MARCH 1, 1986. PLEASE HAVE ALL LETTERS, PHOTOS AND MANUSCRIPTS TO ME BY THAT DATE. I AM STILL SEARCHING FOR INTERESTING ADVERTISEMENTS TO REPRODUCE. IF YOU HAVE ANY, IN PARTICULAR FOREIGN VERSIONS, PLEASE SEND THEM, OR A HIGH QUALITY XEROX, ALONG.
THANK YOU

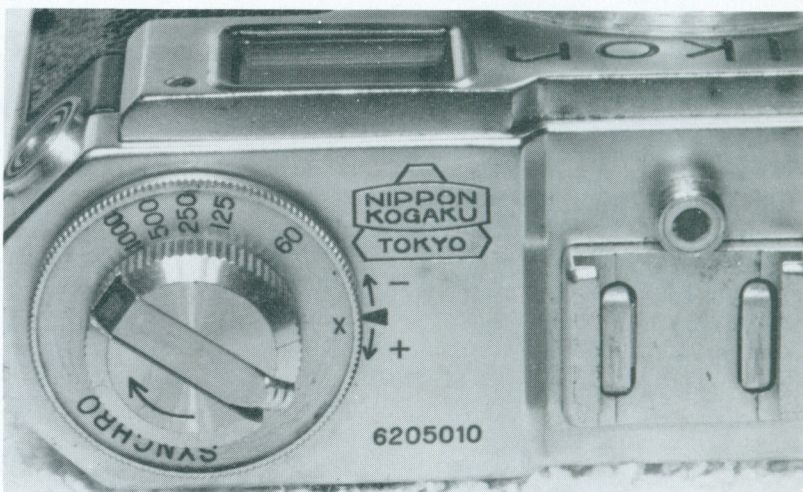
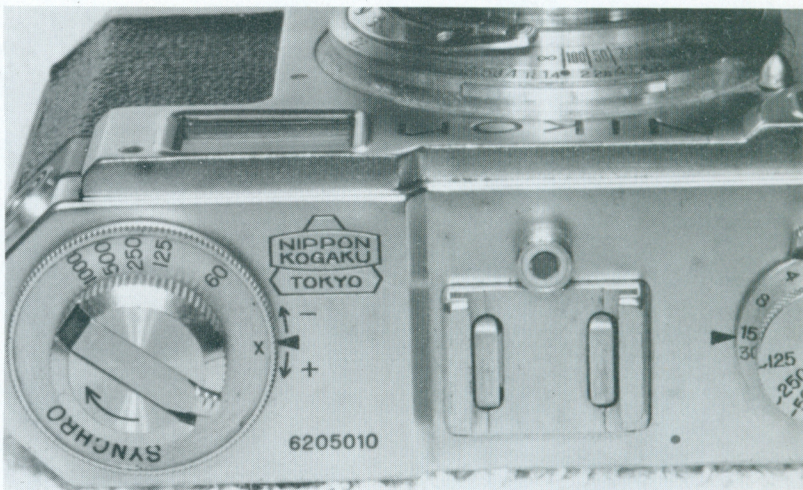
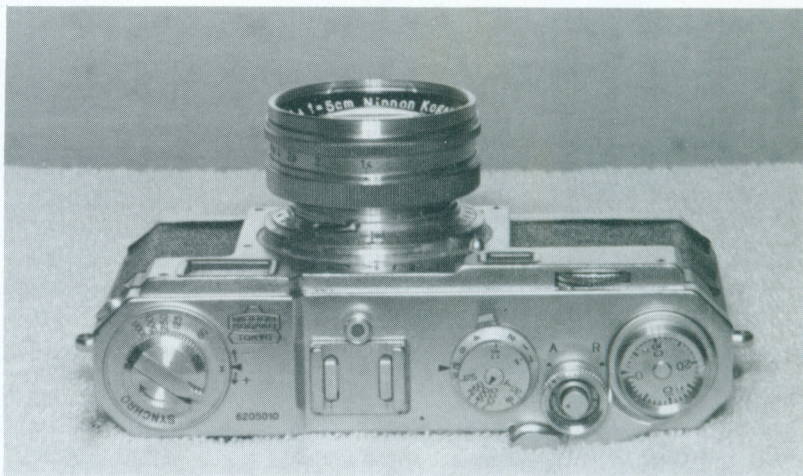
odds 'n ends

THIS PAGE WILL BE RESERVED IN ALL FUTURE ISSUES OF "THE NIKON JOURNAL" FOR THE RARE, THE UNUSUAL OR OFFBEAT, OR JUST THE OUT OF THE ORDINARY. IF YOU POSSESS

ANYTHING THAT YOU FEEL IS SPECIAL, OR UNUSUAL, PLEASE SEND ME AT LEAST TWO OR THREE DIFFERENT VIEWS OF YOUR ODDITY. THANK YOU.

TO THE RIGHT ARE THREE PHOTOS OF WHAT APPEARS TO BE JUST AN ORDINARY RUN-OF-THE-MILL NIKON S2. HOWEVER, I FEEL IT DESERVES CLOSER INSPECTION. I WAS FIRST MADE AWARE OF THIS CAMERA ABOUT SIX MONTHS BEFORE I FINISHED MY SECOND BOOK. ONE OF THE CONTRIBUTORS TO THAT BOOK SENT ME HIS BATCH OF PHOTOS WITH SOME SHOTS OF THIS PARTICULAR CAMERA. HOWEVER, IT HAD MOUNTED AN ALUMINUM F1.4 LENS, AND I USED IT FOR THE CHAPTER ON THE LENS WITHOUT ATTACHING ANY SIGNIFICANCE TO THE BODY. THE OWNER AND I DID THIS INTENTIONALLY JUST TO SEE HOW MANY READERS WOULD NOTICE ANYTHING PECULIAR. WELL..... ONLY THREE PEOPLE HAVE EVER MENTIONED THE FACT THAT THIS S2 BODY HAS A NIKON SP SERIAL NUMBER..... ALONG WITH THESE PHOTOS SEE PAGE 111 OF MY BOOK FOR ANOTHER SHOT OF NIKON S2 NO. 6205010. NOTE THAT I EVEN MENTIONED THE BODY NUMBER IN THE CAPTION, JUST IN CASE THE READERS NEGLECTED THE CAMERA IN FAVOR OF THE RARE ALUMINUM LENS. SINCE THE BOOK I HAVE BEEN ABLE TO PERSONALLY INSPECT THIS CAMERA, AND THESE PHOTOS ARE THE RESULT. EVEN UNDER MAGNIFICATION IT IS OBVIOUS THAT THE NUMBER HAS NOT BEEN ALTERED IN ANY WAY WHATSOEVER. ALSO THE APPEARANCE OF THE BODY TOP PLATE MATCHES THAT OF THE REST OF THE CAMERA, I.E. THE CAMERA IS NOT MINT AND EXHIBITS EQUAL USAGE MARKS THROUGHOUT.

AS TO HOW THIS CAMERA ENDED UP WITH THIS NUMBER, WE MAY NEVER KNOW. IF IT HAD BEEN A BLACK-DIAL S2 ONE MIGHT SURMISE THAT A FEW NUMBERS ON THE STAMPING PRESS COULD JUST HAVE "SLIPPED" AND, INSTEAD OF PUNCHING OUT THE NUMBER 6195010, THE RESULT WAS 6205010. BUT IT IS AN EARLIER CHROME-DIAL AND THOSE TWO NUMBERS WOULD HAVE HAD TO "SLIP" FROM 3 TO AS MUCH AS 6 PLACES TO PRODUCE THIS RESULT. COULD IT BE A REPLACEMENT TOP?? OF COURSE IT COULD..... BUT WHY GIVE IT AN SP NUMBER?? THERE ARE AT LEAST 2000 UNUSED NIKON S2 NUMBERS BETWEEN 6197000 AND WHERE THE SP MODEL BEGINS. WE NEED TO SEE MORE OF THESE TO DRAW BETTER CONCLUSIONS BUT IN THE MEANTIME I THINK IT RANKS AS ONE HELL OF A FIND. AND HARDLY ANYONE NOTICED IT.....



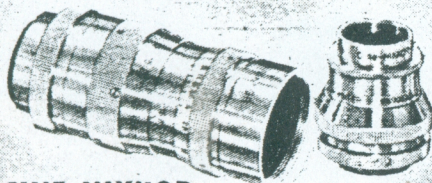
***Don't be misled!**

KNOW THESE NAMES



NIKKOR LENSES

Highly color corrected, internally coated, maximum resolution, absolute minimum of aberrational faults. Standard 50mm: f/2, f/1.4. 35mm: f/2.5, f/3.5. 85mm: f/2. 135mm f/3.5. All lenses available in Leica mounts, also 135mm f/3.5 in Exakta mount.



CINE NIKKOR

For 8mm cine cameras: 13mm f/1.9, focusing mount from infinity to one foot, click stops, internally coated; 38mm f/1.9 telephoto, focusing mount from infinity to two feet, click stops, internally coated.



APO NIKKOR

Process-type lens, 30, 45 and 60cm focal lengths, f:9 speed, variable diaphragm and provision for waterhouse stops. Prisms available.



NIKON CAMERA

Highest precision mechanism and construction, operating parts on top for easy convenient handling, smooth focal plane shutter, coupled range finder, built-in synchronizer for flash and strobe, close focusing, easy loading, no double exposures, full line of accessories. Nikon is unconditionally guaranteed.

NIKON

The Camera

NIKKOR

The Lens

They're the ones that were discovered by leading war photographers in Korea. The Nikon camera and Nikkor lenses have received more enthusiastic recognition and acceptance in the photographic world in the last two years than any camera and lens in history. Their manufacturer, Nippon Kogaku, produces the best optical glass in Japan (over 90% of all optical glass, in fact), and only the very top quality goes into Nikkor lenses. Their sole distributor in the United States is the Nikon Camera Company, Inc., who stand behind Nikon and Nikkor products with a full guarantee and complete factory service.

... KNOW THESE FACTS

- ONLY** Nippon Kogaku makes the NIKON
NIKON is the ONLY camera made by N-K
- ONLY** Nippon Kogaku makes the NIKKOR
NIKKOR is the ONLY lens made by N-K
- ONLY** the Nikon Camera Company, Inc.
distributes NIKON-NIKKOR products in
America, and guarantees them
- ONLY** the Nikon Camera Company, Inc. can give
factory service on NIKON-NIKKOR products
- ONLY** authorized Nikon dealers displaying the
NIKON-NIKKOR emblem can sell them
with the guarantee and protection
of the Nikon Camera Co., Inc.



Look for this emblem
when you want to buy
genuine Nikon-Nikkor products

● KNOW You're Getting the Finest. Get the NIKON!

NIKON CAMERA CO., INC.

25 CALIFORNIA STREET • SAN FRANCISCO, CALIFORNIA

*WHY THIS ADVERTISEMENT?

Imitators have attempted to capitalize on the justly famed names of Nikon and Nikkor. To protect you when you are shopping for top quality photographic equipment, we are presenting the facts about the Nikon camera...Nikkor lenses...Nippon Kogaku...and Nikon Camera Company, Int.

There's only one NIKON • There's only one NIKKOR

THIS AD APPEARED IN THE APRIL 1953
ISSUE OF POPULAR PHOTOGRAPHY.
SENT IN BY KARL EICHHORN, JR.