


A PUBLICATION OF THE
NIKON HISTORICAL SOCIETY

MARCH 31, 1986



11

The NIKON  Journal



ROBERT ROTOLONI
EDITOR/PUBLISHER

THE "NIKON JOURNAL" IS THE OFFICIAL PUBLICATION OF THE NIKON HISTORICAL SOCIETY AND IS PRODUCED BY RJR PUBLISHING, INC. FOR THE EDUCATION AND BENEFIT OF ITS

MEMBERS, AND IS PUBLISHED FOUR TIMES A YEAR. ADDRESS ALL YOUR CORRESPONDENCE TO.....
ROBERT ROTOLONI, P.O. BOX 3213,
MUNSTER, INDIANA 46321.....USA.

CONTENTS

PAGE ONE.....
 EDITORIAL
 BY ROBERT J. ROTOLONI
 EDITOR/PUBLISHER

PAGE TWO.....
 BOXED--LIKE NEW...PART VII

PAGE FOUR.....
 THE "OTHER NIKKORS"....
 PART II
 BY DR. RANDOL HOOPER, MD.

PAGE TWELVE.....
 "THREE S COMPANY"....
 BY JOSEPH HIGHAM

PAGE FOURTEEN.....
 A CLOSE LOOK AT THE "M"....
 PART III
 BY ROBERT J. ROTOLONI

PAGE SIXTEEN.....
 CLASSIFIEDS
 LETTERS TO N.H.S.
 NEXT TIME
 BLACK IS BEAUTIFUL

INSIDE REAR COVER

ODDS N ENDS....
 THE 50/F1.2 FUJINON LENS
 BY AKITO TAMLA

SOCIETY MEMBERS

ROBERT ROTOLONI
 DAVID WEILER
 JOHN ANGLE
 ROBERT HARRIS
 SAM DECKER, MD.
 RANDY REED
 CARL JOECKS
 STEPHEN GANDY
 MEL WILNER, DDS.
 MAURICE MAUNER
 RANDOL HOOPER, MD.
 CHARLES PADDOCK
 RICHARD SEYFARTH
 PETER DECHERT
 HAYATO UYAMA
 JERRY ROLD
 BURTON RUBIN, DDS.
 HARRY SOLETSKY
 J-P HERMSDORF
 ROBERT HABER
 TIMOTHY LEEDY
 GARY STONE
 TAD SATO
 WILLIAM ADAMS
 JAMES MOORE
 ALAN JOHANSON
 TSUYOSHI KONNO
 SHICHIROE ABE
 KATSUMI WATANABE
 BILL KRAUS
 PAUL COMON
 SIMON CIVJAN, DDS.
 LLOYD MINAAI, MD.
 MIKIO AWANO
 AKITO TAMLA
 ROBERT FAIRCHILD
 RAYMOND F. YOUNG
 WILLIAM JACKSON, MD.
 ALBERT KUBANIS
 GEORGE URY
 VIC GORECKI
 EDWARD BROSKEY
 BEN DI GREGORIO
 KARL MANTYLA
 JOHN SCHRADER
 BOB THOMPSON
 JEREMY ROWE
 TAKAYUKI KAWAI
 SHIGERU KAJII
 R.E.(TED) CAIS

ROY VOSE
 JOHN HANSEN, JR.
 J.L. HUTCHINSON
 P.H. VAN HASBROECK
 JAMES MARTIN
 OLIVER REDDAWAY
 TANEAO IMAI
 W.S. EMERY
 TONY HURST
 KARL EICHHORN, JR.
 WALTER MENDOZA
 JOSEPH HIGHAM
 ROBERT TUCCI
 PETER R. SMITH
 PETER WALNES
 WILLIAM GAYNOR, MD.
 JOHN BAIRD
 CARROL O. MEYER, SR.
 C.J. MCCLINTOCK
 JOSEPH CHARLES
 HAROLD GRAY
 JACK DUGREW
 JOHN SABELLA
 BOB JOHNSON
 L.E. NELSON
 WALTER BRADLEY
 MARK KRONQUIST
 STANLEY BOTWAY, MD.
 JOHN THENHAUS
 ROBERT KENNEDY
 MICHAEL SYMONS
 JAMES JENSEN, JR.
 ROBERT BILOW
 GEORGE JENKINS
 STEVEN FISCHER
 CHARLES GIBSON
 WES TAFT
 WALTER LOWE
 R.E. FLAGG
 R.E MITCHEL
 JOHN KAHLE, MD.
 JEROME ROBINSON, MD
 ALLAN SUGAI
 THOMAS DIFIGLIO
 FRED MAUER
 GERALD PAGE
 JIMMY HORN
 JOHN SANDERS
 EUROPEAN SOCIETY FOR THE
 HISTORY OF PHOTOGRAPHY.

MEMBER CONTRIBUTIONS:

ANY CONTRIBUTIONS BY MEMBERS OF MANUSCRIPTS AND/OR PHOTOGRAPHS CONCERNING THE NIKON RANGEFINDER SERIES ARE APPRECIATED, AND EVERY ATTEMPT WILL BE MADE TO MAKE USE OF ALL SUBMITTALS AS SPACE ALLOWS. PLEASE TYPE ALL MANUSCRIPTS AND MAKE ALL B/W PHOTOS AT LEAST

"3 BY 5" AND GLOSSY. A SEAMLESS BACKGROUND IS PREFERRED AND TRY TO MAKE PHOTOS HIGH CONTRAST. YOU WILL BE GIVEN A BY-LINE UNLESS ANONYMITY IS REQUESTED AND ENCLOSE AN "SASE" IF RETURN OF THE MATERIAL IS DESIRED.....
THANK YOU.

EDITORIAL

I MENTIONED IN MY LAST EDITORIAL THAT I WAS ABOUT TO SEND OUT A DIRECT MAILING IN AN EFFORT TO GAIN MORE MEMBERS AND TO POSSIBLY ATTAIN THAT MAGIC TOTAL OF "100". I AM SORRY TO SAY WE DIDNT MAKE IT. AS OF MARCH 6TH WE HAVE ONLY "99" MEMBERS..... WELL, YOU CANT SAY I DIDNT TRY. MAYBE NEXT TIME. BELOW IS A LIST OF OUR NEW MEMBERS. WELCOME ALL.

STEVEN FISCHER
15711 126TH. AVE. NE.
WOODINVILLE, WASH. 98072

WES TAFT
PO BOX 2072
661 HAGER AVE.
GEARHART, OREGON 97138

CHARLES GIBSON
PO BOX 826
ANNANDALE, VA 22003

WALTER LOWE
567 29TH. AVE.
SAN MATEO, CA 94403

R.E. MITCHEL
4201 31ST. AVE.
KENOSH, WISC. 53142-1910

R.E. FLAGG
1825 NORWOOD BLVD.
ZANESVILLE, OHIO 43701

ALLAN H. SUGAI
43 WEST OHEA ST.
HILO, HAWAII 96720

JOHN F. KAHLE, MD.
715 NORTH BEAVER
FLAGSTAFF, AZ 86001

JEROME ROBINSON, MD.
5501 N. 19TH. AVE., SUITE 111
PHOENIX, AZ 85015

THOMAS DIFIGLIO
61 HIGH STREET
ARMONK, N.Y. 10504

FRED T. MAUER
5697 GREEN CIRCLE DR., UNIT 101
MINNETONKA, MN 55343

GERALD PAGE
550 PAULARINO AVE., APT. P202
COSTA MESA, CA 92626

EUROPEAN SOCIETY FOR THE HISTORY
OF PHOTOGRAPHY
PROVINCIAL MUSEUM VOR FOTOGRAFIE
KAREL OOMSSTRAAT 11
B-2018 ANTWERP, BELGIUM

JIMMY HORN
545 SE. BUSH STREET
ISSAQUAH, WA 98027

JOHN M. SANDERS
PO BOX 1486
HURST, TEXAS 76053

AN INTERESTING ADDITION IS THE "EUROPEAN SOCIETY FOR THE HISTORY OF PHOTOGRAPHY", WHICH IS HEADQUARTERED IN THE CITY OF ANTWERP, BELGIUM. THEY PRODUCE VARIOUS PRINTED MATTER, ONE OF WHICH IS A BIBLIOGRAPHY, OR ABSTRACT, OF ARTICLES PERTAINING TO THE HISTORY AND DEVELOPEMENT OF PHOTOGRAPHY. SINCE OUR MAGAZINE IS PRIMARILY CONCERNED WITH HISTORY THEY FELT THAT WE SHOULD BE ADDED TO THEIR LIST OF PERIODICALS TO BE ABSTRACTED. THEY HAVE JOINED IN ORDER TO OBTAIN FUTURE ISSUES OF "THE JOURNAL". I AM SURE WE ALL WELCOME SUCH A DEVELOPEMENT, SINCE IT CAN ONLY INCREASE OUR EXPOSURE AMONGST THE COLLECTORS OF THE WORLD. I HAVE SEEN ONE OF THEIR ISSUES AND IT CONTAINS ABSTRACTS FROM SUCH DIVERSE SOURCES AS POPULAR PHOTOGRAPHY PLUS ARTICLES PUBLISHED IN NEARLY EVERY COUNTRY IN THE WORLD. THE OFFICIAL TITLE OF THE ITEM IS "PHOTOHISTORICA" AND IT COVERS SUCH THINGS AS.... A LIST OF ALL MUSEUMS AND SOCIETIES ALONG WITH THEIR ADDRESSES (I HOPE TO SEE US LISTED SOON); BIOGRAPHIES OF FAMOUS PHOTOGRAPHERS; ARTICLES ON VARIOUS CAMERAS; A LISTING OF COLLECTIONS ALL OVER THE WORLD; OPTICS; AND THE ECONOMICS OF PHOTOGRAPHY. TO ME A VERY INTERESTING MAGAZINE.

I AM STILL HAVING PEOPLE ASKING ME WHEN THE SOCIETY IS TO HAVE SOME SORT OF CONVENTION, OR MEETING. SINCE I LIVE LESS THAN AN HOUR FROM OHARE AIRPORT IN CHICAGO, WHICH IS ALMOST THE EXACT GEOGRAPHICAL CENTER OF THE COUNTRY, A MEETING HERE MIGHT BE POSSIBLE. AT THIS TIME MANY ASPECTS OF SUCH AN UNDERTAKING ARE UNKNOWN, BUT FOR REFERENCE I DO NEED TO GET SOME IDEA IF THE MEMBERS ARE REALLY INTERESTED. IF YOU FEEL THAT A WEEKEND TRIP TO CHICAGO IN THE SPRING OR EARLY FALL (BEST WEATHER) WOULD INTEREST YOU JUST DROP ME A LINE. I AM CURIOUS TO SEE WHAT YOU HAVE TO SAY.

IN THIS ISSUE WE HAVE THE SECOND INSTALLMENT OF THE SERIES ON THE SCREW MOUNT NIKKORS BY DR. HOOPER. PART TWO IS LARGER AND COVERS THE REST OF THE WIDE-ANGLES AND PART OF THE NORMALS. LOOK FOR MORE IN THE NEXT ISSUE. BOXED...LIKE NEW IS BACK, PLUS A VERY INTERESTING ARTICLE ON THE NUMBER "3" BY JOSEPH HIGHAM.

ROBERT ROTOLONI
EDITOR/PUBLISHER

BOXED---LIKE NEW
 BOXED---LIKE NEW

Part VII

BY ROBERT ROTOLONI



THE LEAD OFF ITEM FOR THIS INSTALLMENT CONSISTS OF TWO PHOTOS OF A VERY COMPLETE BOXED NIKON "S". NOT ONLY IS THE BLUE BOX PRESENT BUT ALSO THE LENS INSPECTION SLIP, THE BODY CERTIFICATE (MIS-SPELLED??), THE BUYERS COPY OF THE GUARANTEE CARD, THE INSTRUCTION BOOK AND, LAST BUT NOT THE LEAST, A GENUINE NIPPON KOGAKU K.K. BAG OF SILICA GEL..... CAMERA IS NO. 6102010 AND THE LENS IS NO.326477(1.4). NOTE THAT THE INSPECTION IS DATED SEPTEMBER 3,1952.

BILL ADAMS.

NEXT UP IS 85/F2.0 NIKKOR NO. 292312. ITS BLUE VELVETEEN BOX IS STAMPED ON THE BOTTOM "FOR CONTAX" IN RATHER LARGE LETTERS. ALSO NOTE THE SMALL SLIP OF PAPER. IT READS.."THIS LENS IS DESIGNED FOR USE WITH THE CONTAX CAMERA ONLY AND CANNOT BE USED FOR NIKON."..R. ROTOLONI.



THE 50MM. MICRO-NIKKOR IS A RATHER DIFFICULT LENS TO FIND TODAY BECAUSE OF ITS LOW PRODUCTION RUN. TO OBTAIN A BOXED EXAMPLE IS EVEN MORE DIFFICULT. THIS IS LENS NO. 523654 SHOWN WITH ITS PLAIN BLUE BOX. IT HAS COMPARTMENTS FOR THE LENS WITH ITS PLASTIC BUBBLE AS WELL AS THE EVEN HARDER TO FIND DIAPHRAGM COLLAR. IN ADDITION THIS LENS ALSO CAME WITH ITS INSPECTION SLIP, FRONT CAP AND A FILTER...R. ROTOLONI



THIS IS THE FIRST VERSION OF THE NIKON "CLOSE-UP" DEVICE, WHICH WAS MADE FOR THE MODEL "S" CAMERA. THIS EXAMPLE WAS FOUND IN ITS ORIGINAL BLUE BOX ALONG WITH THE LEATHER CASE AND INSTRUCTION BOOKLET. IT IS POSSIBLE THAT EVEN EARLIER ONES CAME IN THE VELVETEEN TYPE BOXES, BUT THIS ONE MAY REPRESENT THE EARLIEST TYPE...BILL KRAUS.

TWO VARIFOCAL (ZOOM) FINDERS. ON THE LEFT A LATER TYPE II WITH ITS COLORFUL AND WELL IDENTIFIED BOX. ON THE RIGHT IS A MUCH EARLIER TYPE ONE FINDER THAT CAME IN A BLUE VELVETEEN BOX VERY SIMILAR TO THOSE USED CONCURRENTLY ON THE LENSES AND CAMERAS. JOHN ANGLE.



THE "OTHER NIKKORS"...

BY DR. RANDOL HOOPER, MD.

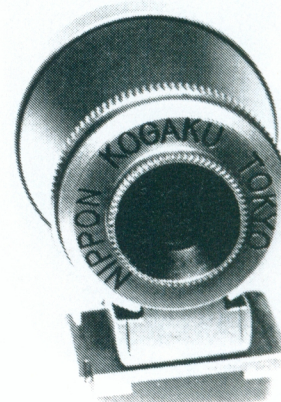
Part 2:

3.5/3.5 W NIKKOR—This was the first SM wide angle lens developed by N-K. The four element three group TESSAR derivative appeared in 1949 for sale with the NICCA Type III. The triplet design was quite similar to the formula of the LEITZ 3.5/3.5 ELMAR. Angle of view was 62 degrees; near focus was 3.5 feet. Two optically identical versions are known. The earliest has a chrome plated brass rotary mount without front accessory threads. Only push on 36mm accessories, lens caps, hoods, etc. can be used. Serial number batches are 910XXX and 426XXX. Minimum f stop was f16. Earlier lenses are marked "Tokyo" and often have a separate serial number 5003XXX engraved on the rear of the lens mount. The purpose of this second number remains unknown. A plausible explanation is that the optics and mounts are from different production batches and were assigned separate numbers; the mount number used the system whereby the first two digits represent the year of production and the second two represent the month. Certain 5 and 13.5 cm lenses carry similar serial numbers on the front. The second version has a chrome plated brass rotary mount with a black f stop ring and 34.5mm threaded front ring. All are engraved "Japan" and have an improved coating. Serial number range is 435XXX-443XXX. Minimum f stop was f22. An exquisitely rare reversing 34.5mm snap on lens hood, AC518, was provided for the later lenses. Both versions were available with a fitted leather case. The earlier model used a chrome or black 36mm push on front cap. The later model was supplied with a 34.5mm snap on front cap. A standard black plastic unmarked 39mm rear cap came with the late version while a dull chrome plated brass rear cap, often marked "Made in Occupied Japan", is often found on the early model. Both versions were produced in large quantities and are easy to locate in fine condition with appropriate caps and case. Early on a chrome plated, parallax corrected to three feet, optical viewfinder was available. Early units may be engraved "Tokyo" on the rear while later production is marked "Japan". Sometimes an "L" is found on the foot of the viewfinder. The last finder provided was a black non parallax corrected Albada reflecting design much superior in performance. It is a prized user's piece and is rather difficult to obtain in mint condition.

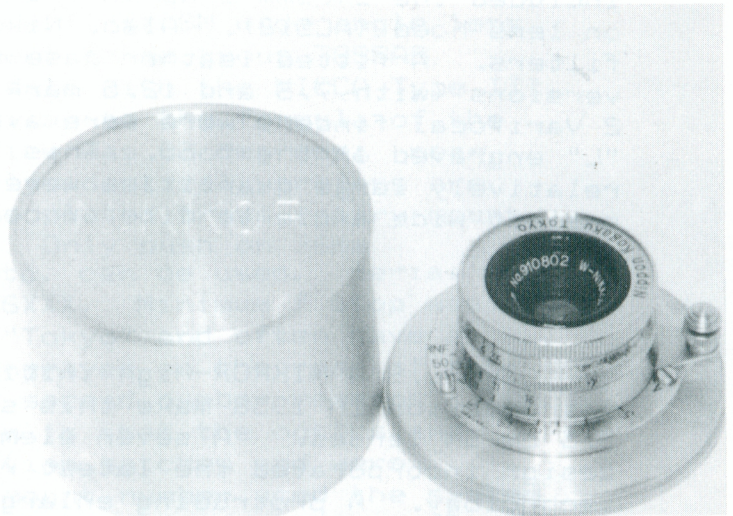
3.5/2.5 W NIKKOR—Perhaps the most popular of the 3.5cm lenses, the 3.5/2.5 was introduced rather late in 1952. Superior optical qualities were associated with the six element four group symmetric Gauss design of this modern coated lens. The optical formula was very similar to that of the 25/3.5 SUMMARON from LEITZ. Angle of view was 62 degrees. Near focus was 3.5 feet. Minimum f stop was f22. Two versions were produced. The first incorporated a chrome plated brass rotary mount. The second had a similar, but lighter weight, mount with a black f stop ring. Serial number range of version I was 243XXX to 259XXX. Version II can be found in the 260XXX-270XXX range. Accessories included the 34.5mm snap on front lens cap and reversing snap on lens hood (AC518). Also, Nikon had a series of 34.5mm filters. A fitted leather case was available. Special versions (with 7.3 and 12.5 markings) of both Type 1 and Type 2 Varifocal finders were available. These often have an "L" engraved on the foot. This lens was so popular that relatively large quantities were sold; hence, it is the easiest wide angle to find in collector condition.

3.5/1.8 W NIKKOR—High initial cost and a late introduction in 1956 make this superb lens the rarest of the 3.5 cm SM lenses. A seven element five group asymmetric design incorporated the latest rare earth glass and coating technology. A protruding enlarged rear element necessitated the use of the special deep rear cap also found on the 2.5/4 lens. Angle of view was 62 degrees. Near focus was 3.5 feet; minimum f stop was f22. A new light weight chrome plated parallel focussing mount was used; the f stop ring was done in black alloy similar to the later versions of the 3.5/3.5 and 3.5/2.5 lenses. Serial number range was 181XXX. Accessory size was 43mm. A snap on front lens cap was sold. An elusive rectangular 43mm lens hood (AC519) was catalogued but has not been reported by collectors. The rectangular shape was necessitated by the fact that the large round hood sold with the concurrent RF lens blocked the rangefinder windows of the LEICA style cameras. The non rotating mount made such a hood practical.

TO THE RIGHT IS AN EXAMPLE OF A VERY EARLY 35MM. NIKON FINDER. ALTHOUGH IT IS NOT MARKED "MADE IN OCCUPIED JAPAN", IT DOES POSSESS THE "TOKYO" ENGRAVING INSTEAD OF "JAPAN". THIS WOULD SUGGEST THAT IT WAS MADE EITHER DURING THE OCCUPATION OR SHORTLY AFTER. I HAVE RECORDS OF SIMILAR FINDERS IN 85MM AND 135MM FOCAL LENGTHS....BILL ADAMS.



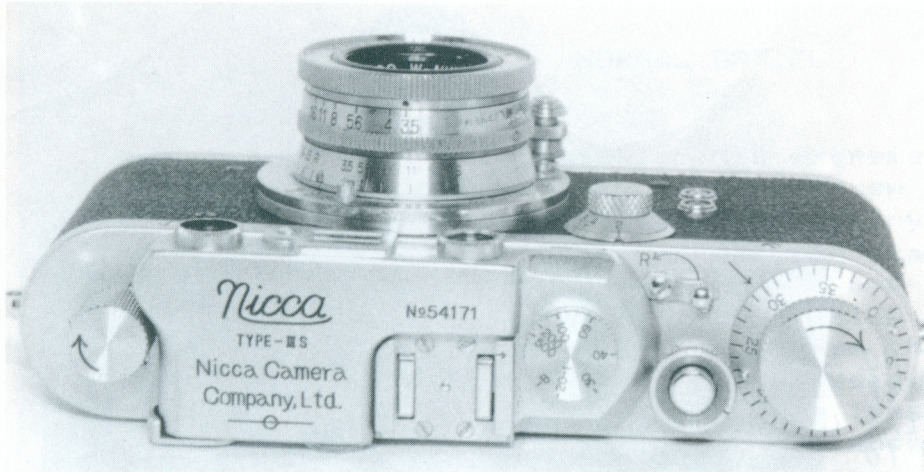
3.5/3.5 Stereo-A strong interest in stereo photography developed in the first half of the Fifties. LEITZ responded to this demand with the 1953 introduction of a stereo system based on the 3.3/3.5 STEMAR lens. N-K followed suit with the Stereo NIKKOR system in 1956. Their 3.5/3.5 lens had a four element three group design similar to that of the STEMAR. Serial numbers were around 242XXX. Production was very limited; less than 150 units were sold. A handful, perhaps a dozen or less, were rumored to have been produced in SM. The author has never seen such a lens but two collectors, one American and one Japanese, have reported its existence. Further information from the readers would be most welcome.



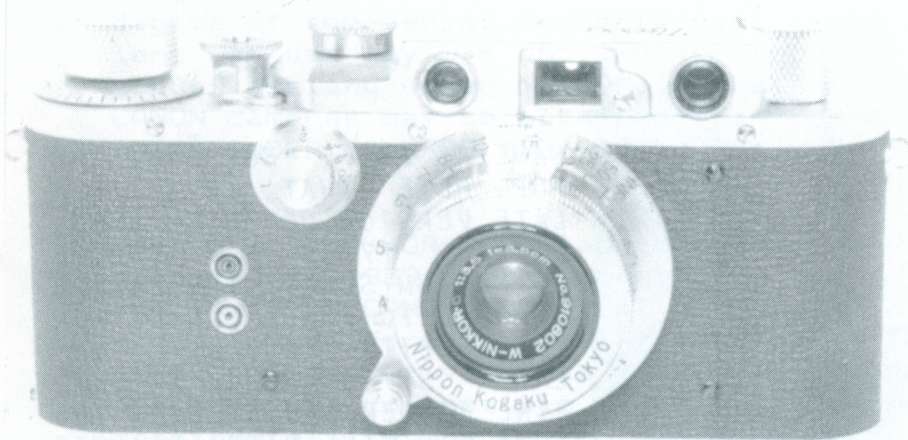
UPPER LEFT PHOTO IS A GROUP SHOT OF THE WIDEANGLE NIKKORS. CLOCKWISE FROM 12 NOON ARE: 35/F1.8, 35/F3.5 (LATE), 35/F3.5 (MIOJ), 35/F2.5 (EARLY) AND 35/F2.5 (LATE) DR. HOOPER.

ABOVE PHOTO IS OF A VERY EARLY 35/F3.5 NIKKOR LENS NO. 910802, WHICH WAS MADE DURING THE OCCUPATION. IT IS SHOWN ALONG WITH A SPECIAL METAL CAN MADE JUST FOR THE SCREW MOUNT NIKKORS. BOTH THE NORMAL AND WIDEANGLE NIKKORS WERE SHIPPED IN THESE CANS AS WELL AS ANOTHER TYPE MADE WITH A BLACK PLASTIC. TO DATE I KNOW OF NO CANS MADE FOR THE LONGER LENSES OR ANY WITH BAYONET FITTINGS INSTEAD OF THE SCREW THREAD. TO THE LEFT IS THE SAME LENS IN THE MORE COMMON LEATHER CASE, WHICH IS SPECIFIC FOR THE SCREW MOUNT LENSES SINCE IT IS TOO SHALLOW FOR ANY BAYONET VERSIONS. I HAVE SEEN SIMILAR CASES THAT WILL ACCOMMODATE ONLY THE SCREW MOUNT NIKKORS...R. ROTOLONI.

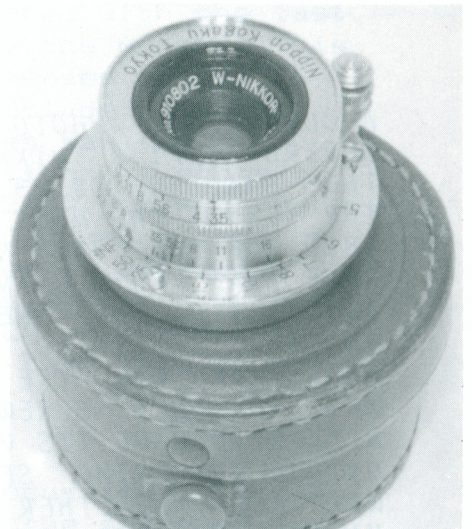
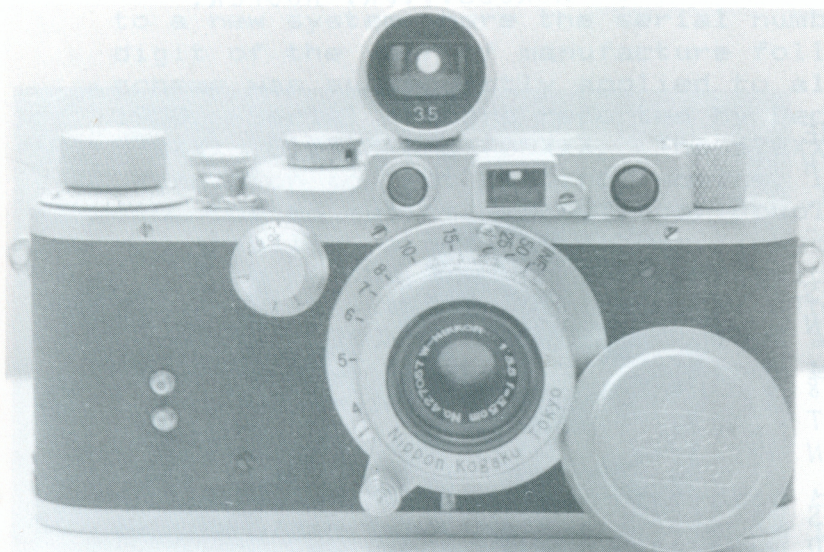




THE TWO PHOTOS AT LEFT ARE OF LENS NO. 910802 MOUNTED ON NICCA BODY NO. 54171. NOTICE HOW COMPACT THIS OUTFIT IS.
R. ROTOLONI.

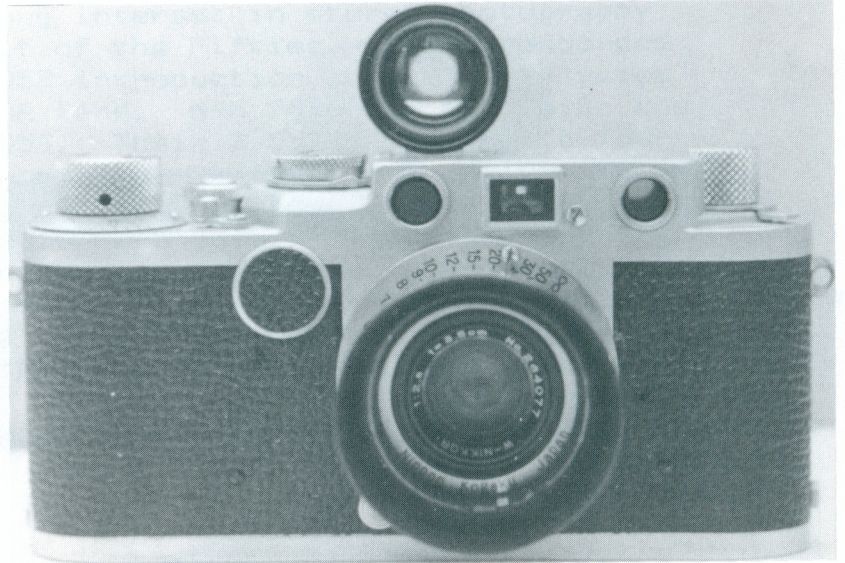


LOWER LEFT IS YET ANOTHER "MIOJ" 35MM/F3.5 LENS ON A NICCA. THIS EXAMPLE IS FROM A MUCH LATER BATCH AND HAS THE NO. 427057, OTHERWISE BOTH LENSES ARE IDENTICAL IN CONSTRUCTION.
DR. HOOPER.



THE LOWER RIGHT PHOTO IS ANOTHER OF LENS NO. 910802 WITH ITS SPECIAL LEATHER CASE.
R. ROTOLONI.

FRONT VIEW OF 35/F2.5 NIKKOR NO 264077 MOUNTED ON A LEICA IIF BODY. THIS WAS THE MOST POPULAR SCREW MOUNT WIDEANGLE NIKKOR TO BE MADE AND MANY FOUND THEIR WAY INTO THE EQUIPMENT BAGS OF LEICA USERS...DR. HOOPER.



SAME AS ABOVE BUT FROM THE TOP. NOTE THAT THIS IS A LATE VERSION OF THIS LENS. EARLIER TYPES HAD CHROME DIAPHRAGM SCALES WHICH WERE CHANGED TO BLACK FOR BETTER READABILITY. ALSO NOTE THE LATER STYLE BLACK BRIGHT-LINE FINDER. MOUNTED ON THE LENS IS THE RARE PLASTIC REVERSIBLE SHADE MENTIONED IN THE TEXT. THIS SHADE IS AN ITEM I HAVE YET TO RUN ACROSS...DR. HOOPER.

A COMPARISON PHOTO OF THE SUPERB 38/F1.8 NIKKOR WITH THE SMALLER 28/F3.5 LENS. THE 1.8 IS THE MOST DESIRE-ABLE OF THE 35MM NIKKORS. NOTE THAT THIS EXAMPLE IS NO. 181910. THE ONE SHOWN ON PAGE SIX IS NO. 181911. AND BY THE WAY, THE 35/F1.8 WAS THE ONLY SCREW MOUNT NIKKOR TO HAVE ITS VERY OWN UNIQUE NUMBERING SEQUENCE, WITH ALL THE OTHER LENSES HAVING NUMBERS INTERMIXED WITH THE BAYONET VERSIONS.



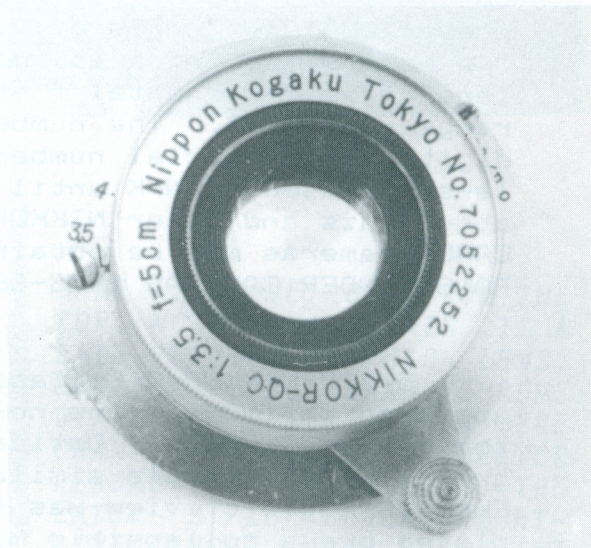
NORMAL OPTICS

5/4.5 NIKKOR Collapsible—This extremely rare lens was produced in a heavy chrome plated J screw mount from 1939 until the Japanese civilian photo industry was shut down by wartime necessity in 1942. It was the standard lens for the J and JS CANON cameras. The lens was not rangefinder coupled and would not properly screw onto a LEICA thread camera due to differences in the pitch of the 39mm thread. A four element three group uncoated TESSAR design is presumed to be the optical formula. Externally, the lens mount was similar to the 5/3.5 and 5/2.8 TESSAR normal lenses supplied with the prewar CONTAX. Angle of view was 46 degrees; near focus was one meter. No infrared focussing mark was provided. The lens had a continental f stop sequence to f18. Serial number range was 50XXX. The numbering system whereby the first two digits of the serial number indicate the focal length of the lens was used by N-K until after the war. Further details about this and other NIKKOR lenses supplied with the early CANON cameras may be obtained from the definitive book CANON RANGEFINDER CAMERAS 1933-68 by Peter Dechert.

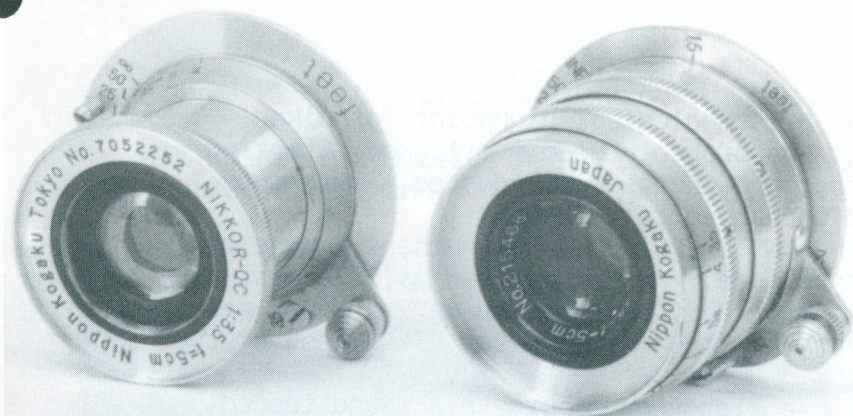
5/3.5 NIKKOR Q Collapsible—This rare SM lens initially appeared in 1939 as the normal uncoated optic supplied with the J and JS CANON. Optical design was a four element three group TESSAR formula similar to that of the LEITZ 50/3.5 ELMAR. Angle of view was 42 degrees. The rotating chrome plated brass collapsible mount was introduced with continental f stops to f18 set behind the front rim. Near focus was one meter. Accessory size was P36. No provision was made for infrared focussing or rangefinder coupling. Serial numbers of the prewar and early wartime units incorporated the focal length: 50XXX. In 1944 N-K switched to a new system where the serial number started with the last digit of the year of manufacture followed by the month. This scheme was subsequently applied to all N-K lenses until 1950. Serial numbers reported by Dechert include: 460XXX, 570XXX, 610XXX and 705XXX. The 570XXX series saw the transition to feet distance scales, international f stops to f16, coated optics, rangefinder coupling, LEICA screw thread compatibility and the familiar "Tokyo" and Q-C engravings on the face of the lens. Minor variations based on engraving style exist within postwar units. This lens was sold with the SEIKI CANON SII, NICCA Original and NICCA or TOWER Type III cameras. Examples from batches earlier than 705XXXX are almost impossible to locate.

5/3.5 NIKKOR Q—This rare rigid close focussing version of the 5/3.5 lens was introduced in 1951 as the standard lens of the NICCA or TOWER Type III and continued to be available

with subsequent IIIA, IIIB, and IIIS models. The four element coated triplet formula remained unchanged in a rotary mount that focused to 1.5 feet. However, the last 1.5 feet was not rangefinder coupled. Angle of view was 46 degrees. Accessory size was S34.5; hence, the reversing 34.5mm snap on lens hood (AC518) could be used. Minimum f stop was f22. Only one serial number batch has been reported: 214XXX. This lens was never built in NIKON RF mount and was never really popular in SM as most photographers were willing to pay extra for the superb 5cm f2 and f1.4 lenses. Very few units were sold before production ceased in 1955. This lens is seldom seen today.



ABOVE LEFT ARE THREE 50MM/F3.5 NIKKORS. LEFT TO RIGHT....A VERY EARLY EXAMPLE IS NO. 70555; THE UNUSUAL "RIGID" VERSION FROM A MUCH LATER PERIOD; ANOTHER EARLY ONE WITH THE NO. 7052722. NOTE THE "MIOJ" CHROME REAR CAP AND ALSO THE EARLY STYLE FRONT CAP WHICH IS OFTEN SEEN ON THE VERY EARLY NIKKORS...DR. HOOPER. ABOVE IS A MORE DETAILED VIEW OF A COLLAPSIBLE F3.5 NIKKOR. THIS IS LENS NO. 7052252....T. KONNO. AT LEFT IS THE HARD TO FIND VERSION OF THE F3.5 LENS MOUNTED IN A RIGID BARREL. AS MENTIONED IN THE TEXT, THESE WERE SOLD ON THE NICCA CAMERAS FROM THE EARLY 1950S. THIS IS LENS NO.214345 IN LIKE NEW SHAPE...V. GORECKI.



A COMPARISON PHOTO OF BOTH THE COLLAPSIBLE AND RIGID VERSIONS OF THE F3.5 NIKKOR. ON THE LEFT IS LENS NO. 7052252 AND ON THE RIGHT IS NO. 215468. THEY ARE OPTICALLY IDENTICAL WITH THE ONLY DIFFERENCE BEING THE BARREL CONFIGURATION...T. KONNO.



ABOVE ARE 2 PHOTOS OF RIGID F3.5 NO. 214345 MOUNTED ON THE PROPER NICCA BODY. EQUIPMENT COURTESY V. GORECKI.

PHOTO AT RIGHT IS A COMPARISON OF THE LATE RIGID F3.5 WITH YET ANOTHER LENS MADE EVEN LATER. THIS IS THE 50/F3.5 MICRO-NIKKOR. ALTHOUGH THE OPTICAL FORMULA IS DIFFERENT, THE F3.5 MICRO REPRESENTS THE LAST "SLOW" NORMAL NIKON MADE FOR THE RANGEFINDERS. IT ALSO IS A PREVIEW OF WHERE WE CONTINUE ON WITH THE NEXT INSTALLMENT IN THIS SERIES...R. ROTOLONI.



THREE'S COMPANY

BY JOSEPH HIGHAM

The Nikon SP camera not only was a technological highpoint for Nikon, it brought in a cosmetic change that has probably been overlooked. Starting with the SP, all Nikon cameras, lenses and accessories adopted a much more modern type face which has remained unchanged to this day.

Apart from the letter form of the "N" in "Nikon", the numbers themselves were changed to a more up to date type face. Fortunately for us, the most significant change occurred to the number "3". Why "fortunate"? Because apart from the number "1", which cannot vary too much, the number "3" is one of the most frequently used digits.

The shape of the "3" changed from a flat topped form to a round topped- or "half an eight"- shape. In type faces, and for easy reference in the text, the "old" three resembles the type face named "antique" and the new three the type face named "gill". For reference.....

3 = ANTIQUE

3 = GILL

For simplicity, they will be referred to by those names throughout the text.

CAMERAS..I,M,S,S2;	Focusing mount figures]	
	Serial numbers]	"ANTIQUE" TYPE
	Frame counter]	(where applicable)
	1/30 sec. shutter speed]	
SP,S3,S4,S3M---F3;	Focusing mount figures]	
	Serial numbers]	"GILL" TYPE
	Frame counter]	(where applicable)
	1/30 sec. shutter speed]	
	ASA reminder(except S4)]	

LENSES..Along with the removal of the "C" and whenever the "3" appeared on the front ring(serial #,focal length or aperture), it changed from antique to gill. This change occurred, as far as I can tell, at the same time as the release of the SP (last quarter of 1957). Generally, this was accompanied by the same change of type face on both the focusing mount scale (see pg. 85 & 137 in the Rotoloni book for examples of this change), and whenever the three appeared on the aperture ring. Sometimes, but rarely, this type change appeared on the focusing mount distance scale before the front ring was changed, but in these cases the "C" remained. I have examples in my collection of 35mm. f1,8 lenses with antique front rings, with the "C", which is correct, and gill numbers on the focusing ring. But, by and large, the transition period was short.

These type face changes do not add anything to our ability to date a lens, as they occurred at the same time as the removal of the "C". However, Nikon is a systematic company and also applied the change to the accessories, which does enable us to arrive at a "before" and "after" date fix, for those items that remained unchanged through the pre and post SP introduction date.

VARIFOCAL..Type II is found in both gill or antique on parallax scale,lens focal lengths and serial numbers.

REFLEX HOUSING..Type II(45 degree prism). Both gill or antique serial numbers.

MICROFLEX & COPY STANDS..Some will exist in either gill or antique.

INDIVIDUAL FINDERS..Where it exists, only use the parallax scale for dating. (The chrome and black finders for the 3.5 and 13.5 lenses had focal length identification in gill from the start.) However, the Mini-35 focal length engraving is found in both gill and antique. Only the antique version would be produced concurrently with the S2. (See Photo.)

All other accessories had a lifespan that stopped before the end of 1957, or started after, and, therefore, are only seen in one or other type face.



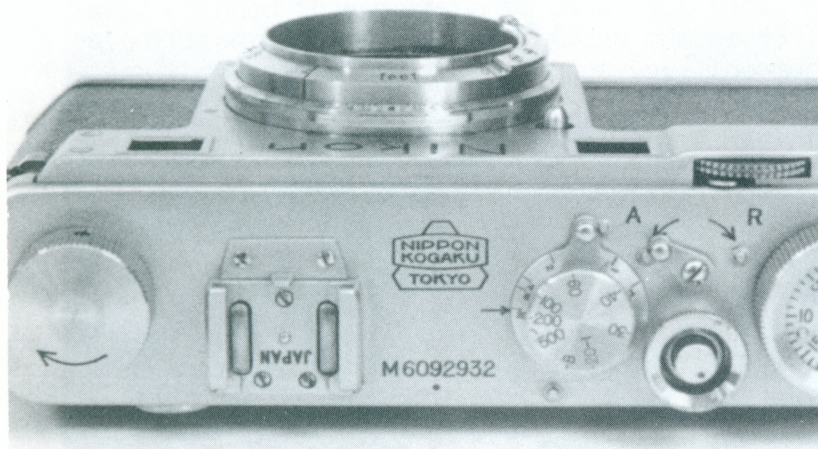
ABOVE IS THE PHOTO MENTIONED IN THE TEXT SENT IN BY MEMBER JOE HIGHAM. TO THE RIGHT ARE TWO PHOTOS I HAVE INCLUDED HERE TO ILLUSTRATE THE DIFFERENCES IN THE 35MM/F1.8 NIKKORS THAT JOE ALSO MENTIONS. NOTE THE SERIAL NUMBERS AND THE FOCAL LENGTH ENGRAVINGS AND THAT THE DISTANCE SCALES ARE THE SAME.
R. ROTOLONI.



A CLOSE LOOK AT THE NIKON "M"...

PART III

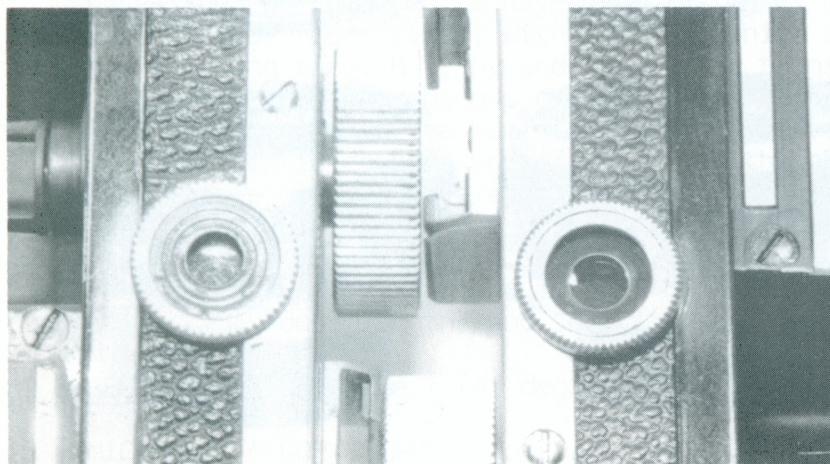
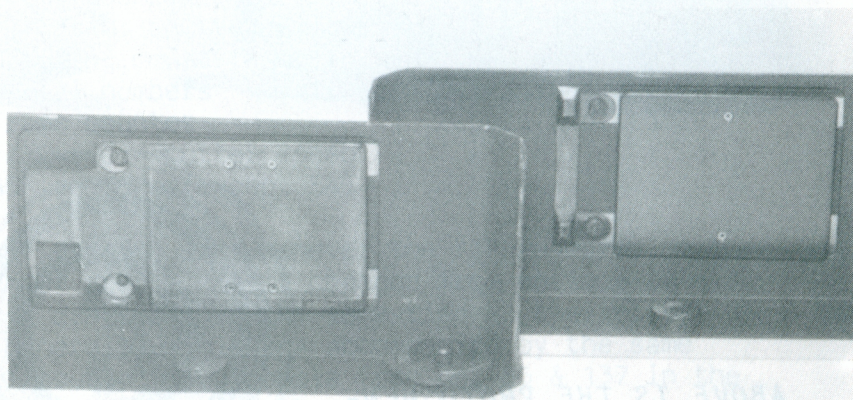
BY ROBERT ROTOLONI



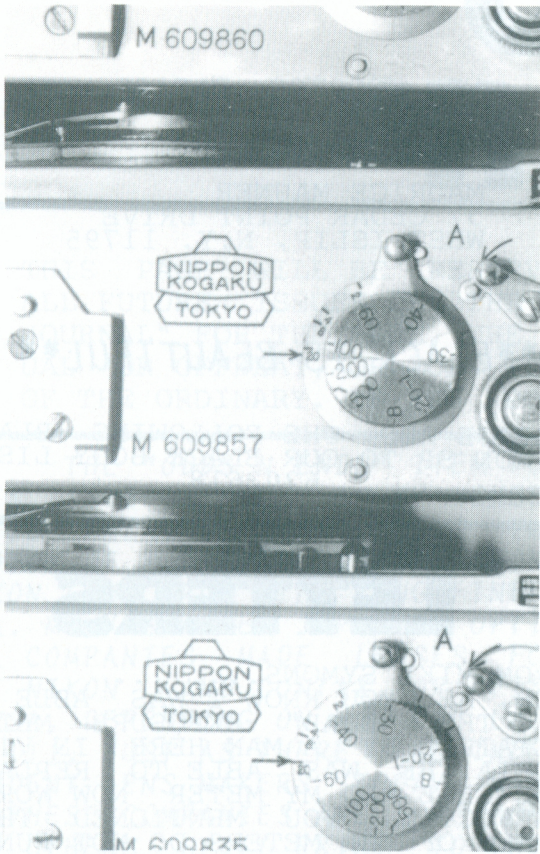
IN THE FIRST PART OF THIS SERIES I MENTIONED THAT A SMALL NUMBER OF NIKON "M" BODIES HAVE BEEN SEEN WITH "JAPAN" ENGRAVED WITHIN THEIR ACCESSORY SHOES. TO THE LEFT IS SUCH A CAMERA. OTHERS HAVE BEEN SEEN WITH "JAPAN" ORIENTATED IN THE OPPOSITE DIRECTION.

T. KONNO.

TWO BASIC TYPES OF PRESSURE PLATES ARE SEEN IN THE NIKON M. THAT ON THE LEFT IS EARLIER (M609835) AND ON THE RIGHT (M6091956) IS LATER. THE BREAK OCCURS AT "ABOUT" BODY NO. 6092000, ALTHOUGH THIS IS NOT AN ABSOLUTE FIGURE..R.ROTOLONI.

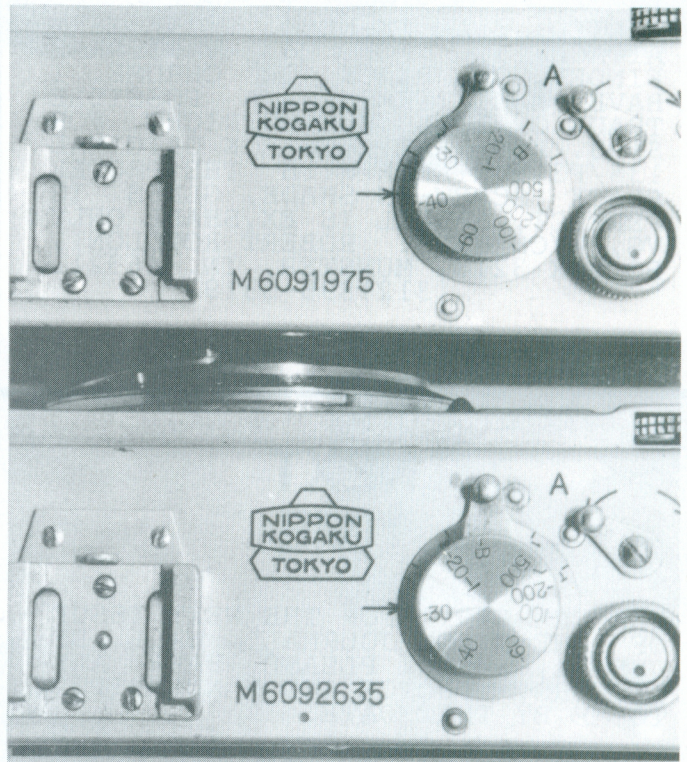
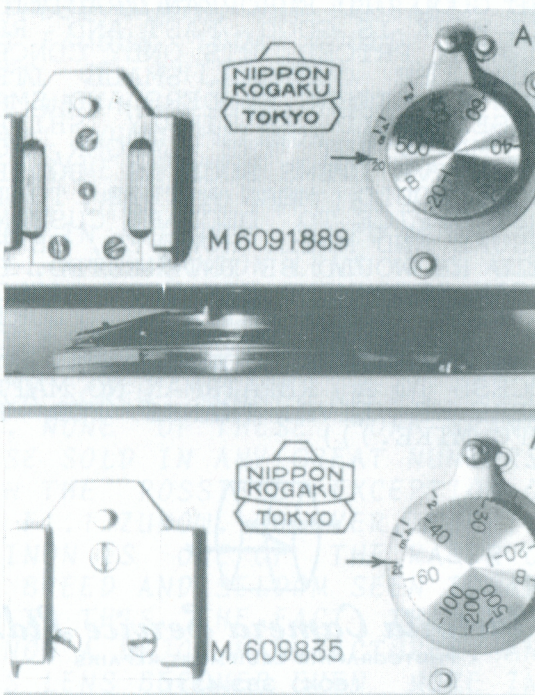


THE EARLIER BODIES, SUCH AS M609860 (LEFT) HAD NO THREADS IN THEIR EYE-PIECE AS ILLUSTRATED HERE. LATER BODIES SUCH AS NO. M6091889 DO POSSESS SUCH THREADS(RIGHT). AGAIN THE ACTUAL BREAKING POINT IS UNKNOWN, BUT THREADS ARE A LATER FEATURE. R. ROTOLONI.



AN INTERESTING ASPECT OF THE NIKON M SERIES IS THE PLACEMENT AND APPEARANCE OF THE "M" ITSELF. NOTE IN THE TOP LEFT PHOTO THAT THE "M" IS IN A SLIGHTLY DIFFERENT LOCATION, EVEN THOUGH THESE BODIES ARE SO CLOSE TO EACH OTHER. THEY ARE MEASUREABLY DIFFERENT. THE LOWER LEFT PHOTO DEMONSTRATES THIS EVEN BETTER, SINCE THE TWO BODIES ARE MUCH FURTHER APART IN NUMBER. WHAT CANNOT BE ASCERTAINED IN THESE PHOTOS IS THAT THE "M" ON THE EARLY BODIES IS "THICKER" THAN THE NUMBERS AND OBVIOUSLY DONE SEPARATELY. THEY WERE NOT STAMPED AS A SINGLE STRIKE, BUT HAD THE "M" ADDED. BY THE TIME NO. 6091889 WAS MADE THE "M" WAS DONE RIGHT ALONG WITH THE NUMBERS SINCE IT NOW APPEARS IDENTICAL. THE PHOTO BELOW ILLUSTRATES HOW THE FOCAL PLANE DOT WAS A LATER FEATURE. NUMBERS NOW SUGGEST IT WAS ADDED SOMEWHERE AROUND BODY NO. M6092600 OR SO.

R. ROTOLONI.



Classified

FOR SALE...COMBINATION OF A NON-SYNCHD NIKON M (M6091456) WITH A COLLAPSIBLE F2.0 (8111379) AND F2A ANNIVERSARY WITH SAME (1456) SERIAL NUMBER. BODY AND PRISM ONLY. BOTH IN NEAR MINT COND. BOTH FOR \$2250.00. SP WITH FOIL SHUTTER AND 50MM/F1.1 EXTERNAL LENS. BOTH IN EX+ COND. BOTH FOR \$1150.00..PPD IN US. IF NOT SOLD PRIOR WILL BE AT CHICAGO SHOW 04/06/86. DAVE WEILER, BOX 95, GENESEO, IL. 61254 (309)944-4605.

WANTED...BLACK SNAP-ON LENS HOOD FOR 35MM/F2.5 RF NIKKOR LENS. STEVEN FISCHER, 15711-126TH. AVE. N.E., WOODINVILLE, WASH. 98072 1-(206)488-0161

WANTED...135/F3.5 "TOKYO" LENS, SHADE, CAPS AND CASE (AS PER PG. 132-ROLOLONI); TYPE 6 VARIFRAME FINDER; LATE BLACK 28MM. NIKKOR, CAPS AND CASE (MUST BE MINT OR EX++); S2 CHROME WITH BLACK DIAL BODY (MINT OR EX++ ONLY); SHADE AND CAPS FOR 35/F1.8; TYPE TWO REFLEX HOUSING (COMPLETE); S-36 MOTOR DRIVE; CHROME TWO PIECE SHADE FOR 50/F2.0 "TOKYO" LENS; CAPS FOR 35/F3.5 "TOKYO" LENS; CHROME AND/OR BRIGHTLINE FINDERS FOR 28, 85, 105 AND 135MM. MIKE H. SYMONS, 3844 MERRIMAN DR, VICTORIA, B.C. CANADA V8P 2S9 (604)477-1867

WANTED..I AM IN NEED OF THE 28MM ATTACHMENT FOR THE VARIFRAME FINDER, IN BLACK OR CHROME. I HAVE MANY ITEMS FOR A POSSIBLE TRADE OR WILL BUY OUTRIGHT FOR \$100. FOR SALE...BLACK ORIGINAL 135/F3.5 NIKKOR WITH THE PROPER BLACK SCREW-IN SHADE. GLASS IS PERFECT, BARREL IS EX, SHADE ONLY VG, W/CS/CAPS. ROBERT ROTOLONI, PO BOX 3213, MUNSTER, IN. 46321. (312)895-5319

NEXT TIME

THE DEADLINE FOR THE NEXT ISSUE OF "THE NIKON JOURNAL" WILL BE JUNE 1, 1986. PLEASE HAVE ALL LETTERS, PHOTOS AND MANUSCRIPTS TO ME BY THAT DATE.

THANK YOU

NEW ADDRESS..PLEASE NOTE.

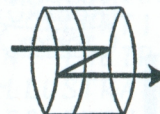
MAURICE MAUNER
57 CEDAR POINT DRIVE
WEST ISLIP, N.Y. 11795

****BLACK IS BEAUTIFUL****

PLEASE ADD THE FOLLOWING BLACK NIKON SP TO OUR BLACK BODY LIST. 6202618

LETTERS

FROM MIKE SYMONS.....
BOB, AS YOU KNOW I WAS ABLE TO GET THE "DEAD" EXPOSURE METER REPAIRED BY A MAN HERE IN VICTORIA. HE WAS ABLE TO REPLACE THE CELL AND MY METER NOW WORKS PERFECTLY. YOU MENTIONED THAT MANY OF THE METERS DO NOT FUNCTION AND THAT YOU FELT THAT THE MEMBERS WOULD WANT TO KNOW OF SOMEONE WHO COULD REPAIR THEM. I HAVE ENCLOSED A BUSINESS CARD FROM THE SHOP. MR. RINK HAS EXPRESSED INTEREST IN SUCH WORK. HE RUNS A FINE REPAIR SHOP IN THE GOOD OLD EUROPEAN TRADITION. HIS WORK IS GOOD, FAST AND REASONABLY PRICED. HIS ONLY CONCERN WOULD BE CUSTOMS. SMALL ITEMS SUCH AS METERS, FINDERS AND SMALL LENSES COULD BE SIMPLY SHIPPED BY MAIL. BUT THE LARGER, MORE EXPENSIVE ITEMS SUCH AS BODIES, ETC., WOULD MEAN A TRIP TO THE POST OFFICE TO DECLARE CUSTOMS, INSURE AND MAIL. HOWEVER, HE HAS SAID HE WOULD BE INTERESTED. BOB I CAN RECOMMEND HIM VERY HIGHLY. ((WITH PETER SMITH IN FLORIDA AND MR. RINK IN CANADA IT LOOKS LIKE WE NIKON COLLECTORS HAVE ACCESS TO A REPAIRMAN NO MATTER WHERE WE LIVE. THANKS FOR THE INFO MIKE.)))



Victoria Camera Service Ltd.

PHOTOGRAPHIC EQUIPMENT REPAIRS

(604) 383-4311

Guenter Rink

Dan Brunet

1309 BLANSHARD STREET
VICTORIA, B.C. V8W 2H8

odds 'n ends

THIS PAGE WILL BE RESERVED IN ALL FUTURE ISSUES OF "THE NIKON JOURNAL" FOR THE RARE, THE UNUSUAL OR OFFBEAT, OR JUST THE OUT OF THE ORDINARY. IF YOU POSSESS

ANYTHING THAT YOU FEEL IS DIFFERENT OR UNUSUAL PLEASE SEND ME AT LEAST TWO VARIED VIEWS OF YOUR ODDITY.

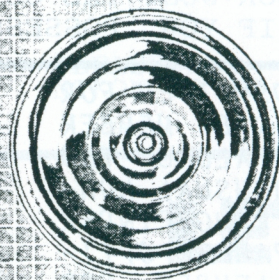
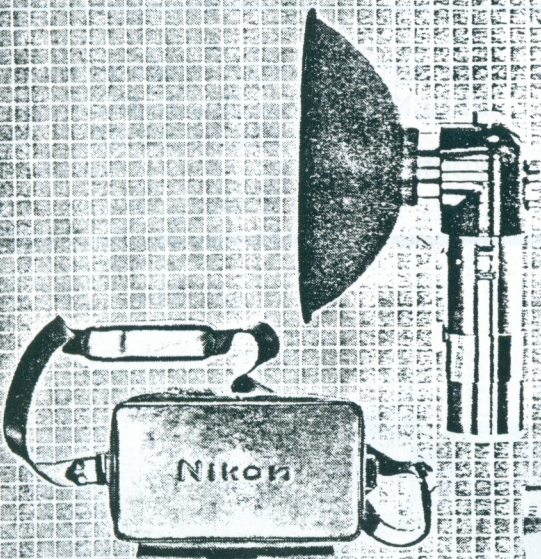
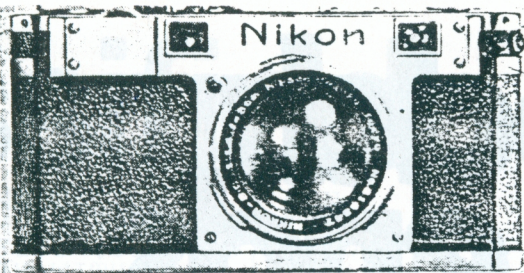
THANK YOU.

THE "ODDS N ENDS" ITEM FOR THIS ISSUE WAS SENT IN BY MEMBER AKITO TAMLA. HE SENT ALONG TWO PHOTOS OF A RATHER UNUSUAL NON-NIKON LENS FROM THE RANGEFINDER ERA. MANY SMALLER JAPANESE OPTICAL COMPANIES MADE LENSES FOR THE NIKON (AND CONTAX, OR VISE VERSA, DEPENDING ON HOW YOU LOOK AT IT), JUST AS THERE ARE INDEPENDENT LENS MAKERS TODAY. MANY OF THESE COMPANIES ARE LONG GONE BUT OTHERS STILL EXIST TO THIS DAY. MANY OF YOU HAVE RUN ACROSS LENSES THAT WILL FIT YOUR NIKON WITH SUCH NAMES AS KOMURA, TANAR, ZUNOW, ACCURA, BUSHNELL AND SOLIGOR. YOU WILL RECOGNIZE SOME OF THESE NAMES, BUT PROBABLY THE MOST FAMOUS TODAY WOULD BE THE MAKER OF THIS ITEM. PICTURED HERE WE HAVE THE 50MM F1.2 INTERNAL MOUNT FUJINON LENS. (YES THE SAME PEOPLE THAT MAKE THE FILM). THIS MID FIFTIES ITEM WAS MADE IN A LEICA SCREW MOUNT AS WELL. A COMPANION LENS WAS ALSO PRODUCED. IT WAS A 35MM. F1.7 BUT I HAVE NEVER SEEN ONE OF THESE IN A NIKON BAYONET, ONLY LEICA SCREW MOUNT. NEEDLESS TO SAY, NONE OF THESE "OFF-BRAND" LENSES SOLD IN ANY GREAT NUMBERS, WITH THE POSSIBLE EXCEPTION OF THE F1.1 ZUNOW. HOWEVER, THE 1.2 FUJINON IS ONE OF THE RARER OF THE BREED AND SELDOM SEEN TODAY. ADD TO THIS THE FACT THAT FUJI IS NOW A MAJOR MANUFACTURER, AND THIS LENS BECOMES EVEN MORE INTERESTING. FORTUNATELY I ALSO OWN ONE OF THESE LENSES AND I FIND THAT I WOULD PROBABLY NEVER PART WITH IT.

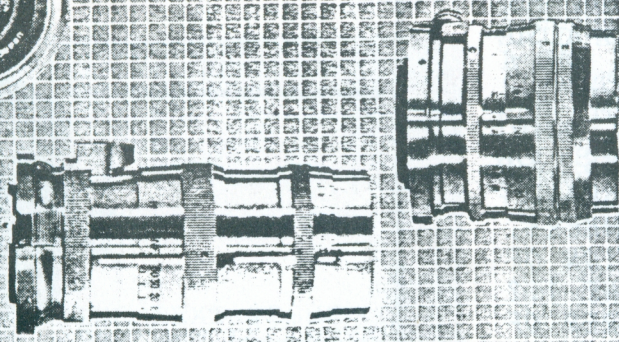
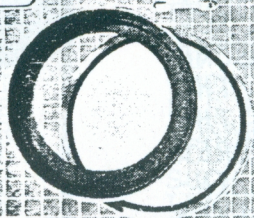


1e

NIKON



accessories



NIKON

CAMERA COMPANY, INC., 25 CALIFORNIA ST., SAN FRANCISCO, CALIF.

THIS AD APPEARED IN THE MAY 1953
ISSUE OF POPULAR PHOTOGRAPHY
SENT IN BY KARL EICHHORN, JR.

Unparalleled performance... a new standard of photographic excellence recognized by all, copied by many, equalled by none. This, the result of 65 years of optical and engineering achievement by Nippon Kogaku KK, culminating in the world's finest lenses, the foremost 35 mm camera. You'll want to own the latest achievement by Nippon Kogaku—the f/2.5 wide angle Nikkor lens, fastest and finest in its field.

the **NIKKOR** lens

Shown above: Nikon camera, flash unit, reflectors, gadget bag, varifocal view finder, close-up device, individual view finder, sunshade and filter ring, Nikkor f/2.5 wide angle, 85 mm and 135 mm telephoto lenses. Not shown: other lenses, hoods, finders and cases. Write for complete accessory list.