

James A. Sinclair

—AND CO., LTD.,

54, HAYMARKET,

LONDON, S.W.

Telegrams: "Oraculum, London."

Telephone: 8788, Central.

A.B.C. Code, 5th Edition.

Optical, Photographic AND . . . Scientific Instrument Makers.

WHOLESALE, RETAIL AND EXPORT.

SPECIAL NOTICE . . .

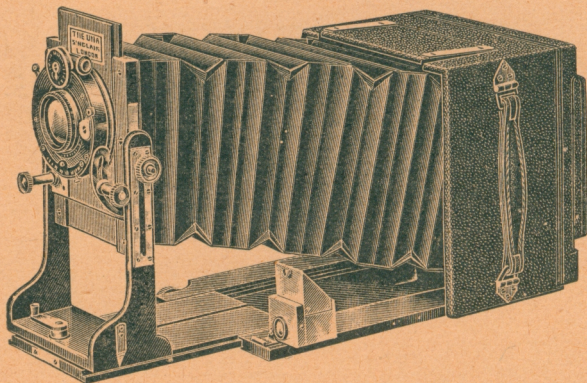
Goods advertised by any Manufacturer or Dealer may be ordered from us at list prices. In the case of High-class Cameras and other Apparatus, we test before forwarding, and customers therefore have an extra guarantee that the goods are equal to makers' specification.

CONTRACTORS TO H. M. GOVERNMENT.

JAMES A. SINCLAIR & Co., Ltd., 54, Haymarket,
LONDON, S.W.

The SINCLAIR "UNA" CAMERA.

THE ONLY PERFECT UNIVERSAL CAMERA.



Showing Standard "Una" with Long Extension and the Double Rising Front.

**The Sinclair "UNA" Camera is THE BEST
of its Class,**

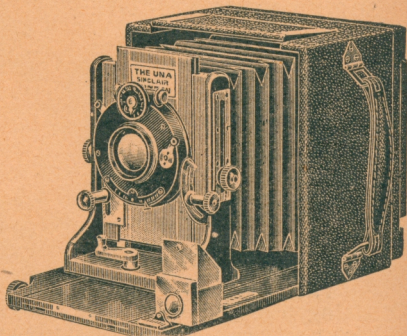
BECAUSE—

- IT** is suitable for every class of work.
- IT** will take short, medium or long-focus lenses.
- IT** may be fitted with any shutter.
- IT** has great latitude in all movements.
- IT** is constructed on practical and scientific lines.
- IT** has a very great rising front.
- IT** has a central swing front.
- IT** has a revolving back.
- IT** is simple in construction and use.
- IT** is suitable for Telephoto work.
- IT** can be fitted with any Changing Arrangement, Dark Slides, Changing Box, Eastman Roll Holder or Premo Film Pack.
- IT** is made of the best materials and with the perfection of workmanship.

JAMES A. SINCLAIR & Co., Ltd., 54, Haymarket, LONDON, S.W.

The "Sinclair UNA" Camera *(continued)*

IS THE BEST
— FOR —
HAND or STAND.



Showing Standard "Una" with normal extension.

It is a fallacy that, provided the photographer has a good lens, anything will do in the way of a camera. The reverse is actually the case, for a good lens on an indifferent camera may be compared to a good bullet in a bad gun. A good lens is an instrument of precision, and a carefully constructed camera is necessary to utilise its good qualities. In the "**Sinclair Una**" it has been our aim to make an instrument as perfect as possible for every class of work, and without those useless movements which are crowded into every cheap camera making them entertaining puzzles for beginners, but such as the expert does not wish or require. The construction of the "**Una**" Camera is of the utmost simplicity. Moreover, it is very compact, but we have not reduced its size at the expense of efficiency. The weight of the $\frac{1}{2}$ -plate "**Una**" is not more than that of many well-known $\frac{1}{2}$ -plate cameras. Every instrument being carefully and exactly scaled, it is particularly adapted for the best work, and will answer the most exacting requirements of the Amateur or the Professional. The "**Una**" Camera is a scientific instrument, and not a toy. Any form of diaphragmatic or focal plane shutter may be fitted, and almost any lens used. In cases where the photographer finds any difficulty in estimating distances, the camera may be held to the level of the eye and accurately focussed on the hooded ground glass without the necessity for a focussing cloth. The level, finder, and focussing scale are arranged so that they are easily and simultaneously seen, an important point in hand-camera work.

The Sinclair "UNA" Camera is the most perfect instrument of its type, and is the outcome of many years' use and intimate acquaintance with the leading makes of hand and stand cameras. It is not easy to judge cameras from makers' catalogues, and we would impress upon intending purchasers of cameras **to see a "UNA" before buying any other make.** It is in essential detail work that makes a "**Una**" so much better than any other instrument.

JAMES A. SINCLAIR & Co., Ltd., 54, Haymarket, London, S.W.

SOME DETAILS OF THE "UNA" CAMERAS.

The Sinclair Camera Front is solidly made with a broad firm base, which may be instantaneously clamped to the baseboard in any desired position and with absolute rigidity—an important, and, indeed, essential point generally lacking in instruments of somewhat similar design.

The Sinclair Double Rising Front

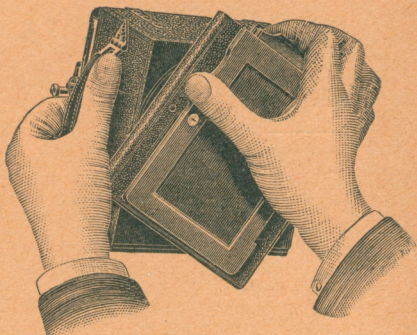
is a peculiar feature which we have designed to give the maximum of movement in a new and simple fashion, so that the wide angle covered by modern anastigmat lenses may be utilized, thus dispensing with the undesirable swing back. This great and important improvement enables the operator to photograph tall buildings without stopping down the lens to the same extent as when a swing back is used. By means of the double rising movement great range is secured, the amount of rise in the various sizes being as follows:—

$\frac{1}{4}$ plate, $2\frac{1}{2}$ inches. 5×4 , $2\frac{5}{8}$ inches. $\frac{1}{2}$ -plate, 4 inches.

Moreover, not only is this rise gained, but it is of practical use, because the bellows are purposely designed very deep in the front, and the body of the camera automatically opens as the movement is placed into operation.

The Sinclair Central Swing Front. Providing a camera has sufficient rise to the front, a swing back or swing front is rarely needed with modern lenses because of the large angle they cover. The swing back as generally fitted is also objectionable, as it at once obviates the use of the focussing scale through the lens having to be racked further back when it is brought into play. The Sinclair central swing front has all the good points of the swing back, and has the important advantage that it may be used without seriously upsetting the focus of the lens, because it is arranged so that it comes in the optical centre of the lens panel. Moreover, it is quite distinct from the rising front movement, and need not be brought into play unless desired.

The Sinclair Revolving Back. This very important improvement on the old reversing back will be generally appreciated. The plate can at once be changed from the vertical to the horizontal position without removing the back of the camera, and this may be done while the plate is exposed in the slide ready for use. The back of the camera with the slide revolves on a light-tight turntable.



The "Una" Camera, showing revolving back as fitted to all patterns.

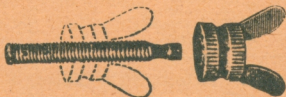
The Sinclair "UNA" Finders.—With the $\frac{1}{4}$ -plate or 5×4 cameras either brilliant or ground-glass finders are supplied. The Brilliant Finder has a reversible mask and is constructed so that the angle is correct for either a 5-inch lens on a $\frac{1}{4}$ -plate camera or a 6-inch on a 5×4 camera. For $\frac{1}{2}$ -plate and 7×5 in. cameras we fit a specially constructed ground-glass finder of large size, with a reversible metal mask adjusted to the focus of the lens used. There is a rising front on the finder itself, and this can be graduated to correspond with the rising front on the camera. The amount of rise given on the finder is sufficient for all hand-camera work. Ground-glass finders can be masked to show the effect of the rising front at an extra cost of 5/6.

The Ground-Glass Screen is covered with a Focussing Hood so arranged that it can be removed in a moment should a focussing cloth or focussing glass be preferred.

The Levels.—Behind the finder and near the focussing scale two tube levels arranged in the form of a T are inserted, and it is convenient to keep an eye on these when viewing the image in the finder. In the case of the De Luxe No. 2 a circular level is used.

The Focussing Scales.—These are of real ivory and let into the baseboard of the camera. We divide the scale into yards and not into an odd number of feet, which are exceedingly difficult to judge. 2, 3, 4, etc., yards correspond to 2, 3 or 4 good strides, and are easy to estimate, but such distances as 7, 11 and 13 feet, which are often used, are very confusing. An ivory depth of focus scale can be supplied at an extra charge of 5/6.

THE SINCLAIR TRIPOD SCREW.



The Sinclair Screw supplied with each "Una" Camera removes all difficulty in attaching camera to tripod stand. The screw fits into the camera at the proper distance, a stop preventing it going too far. The camera with the screw attached is then put on the stand and a fly-nut is easily screwed on underneath. It is a simple thing but adds to the photographer's comfort. Standard $\frac{1}{4}$ -inch Whitworth Screw.

TYPES OF THE "UNA" CAMERAS.

1. **The Sinclair Standard "Una."**—This is the instrument described above, and is the one most generally useful for amateur or professional work.
2. **The Sinclair Tropical "Una."**—This is exactly the same in design as the Standard Model, but is made of polished teak, brass-bound, instead of mahogany covered with morocco leather.
3. **The "Una" De Luxe No. 1.**—A similar instrument to the Standard Model but is covered with either black or brown hand-sewn leather.
4. **The "Una" De Luxe No. 2.**—This model has triple extension and is supplied with rackwork to the back as well as to the front of the camera, and is made for those requiring exceptional range for tele-photography, or for extreme wide-angle work.

PRICE LIST OF

	Form.
The Sinclair "UNA" Camera , complete with brilliant or ground-glass View Finder, and three double Plate Holders, but without lens or shutter	Standard .. Tropical .. De Luxe No. 1 De Luxe No. 2
Ditto, ditto, with Bausch & Lomb Lens and Bausch and Lomb "Automat" Shutter	Standard .. Tropical .. De Luxe No. 1 De Luxe No. 2
Ditto, ditto, with Aldis "Anastigmat" Lens F/6, and Bausch and Lomb "Automat" Shutter. Foci of lenses— $\frac{1}{4}$ -pl., 5 in.; 5×4, 6 in.; $\frac{1}{2}$ -pl., 7 in.; 7×5, 8 $\frac{1}{4}$ in.	Standard .. Tropical .. De Luxe No. 1 De Luxe No. 2
Ditto, ditto, with Cooke Series V. F/8 Lens and "Automat" Shutter. Foci of lenses— $\frac{1}{4}$ -plate, 5 in., 5×4, 6 in.; $\frac{1}{2}$ -plate, 7 $\frac{1}{2}$ in.; 7×5, 9 in. ..	Standard .. Tropical .. De Luxe No. 1 De Luxe No. 2
Ditto, ditto, with Ross F/6.3 "Homocentric" Lens and Compound Sector Shutter. Foci of lenses— $\frac{1}{4}$ -plate, 5 in.; 5×4, 6 in.; $\frac{1}{2}$ -plate, 7 in.; 7×5, 8 $\frac{1}{2}$ in.	Standard .. Tropical .. De Luxe No. 1 De Luxe No. 2
Ditto, ditto, with "Goerz" F/6.8 "Dagor" Lens and New "Compound" Sector Shutter. Foci of lenses— $\frac{1}{4}$ -plate, 5 in.; 5×4, 6 in.; $\frac{1}{2}$ -plate, 7 in.; 7×5, 8 $\frac{1}{4}$ in.	Standard .. Tropical .. De Luxe No. 1 De Luxe No. 2
Ditto, ditto, with Zeiss F/4.5 Tessar Lens and "Compound" Sector Shutter. Foci of lenses— $\frac{1}{4}$ -plate, 6 in.; 5×4, 6 in.; $\frac{1}{2}$ -plate, 7 $\frac{1}{10}$ in.; 7×5, 8 $\frac{1}{4}$ in. ..	Standard .. Tropical .. De Luxe No. 1 De Luxe No. 2
Ditto, ditto, with F/6.3 Zeiss Double "Protar" Lens, Series IV., 2 foci, New "Compound" Sector Shutter, and two focussing scales. $\frac{1}{4}$ -pl. 5×4 $\frac{1}{2}$ -pl. 7×5 5 & 9 in. 6 $\frac{3}{4}$ & 11 $\frac{3}{4}$ in. 8 & 14 in. 8 & 14 in.	Standard .. Tropical .. De Luxe No. 1 De Luxe No. 2
Ditto, ditto, with F/6.3 Zeiss Double "Protar" Lens, Series VIIa., 2 foci, New "Compound" Sector Shutter, and two Focussing Scales. $\frac{1}{4}$ -pl. 5×4 $\frac{1}{2}$ -pl. 7×5 5 & 9 in. 6 $\frac{3}{4}$ & 11 $\frac{3}{4}$ in. 8 & 14 in. 8 & 14 in.	Standard .. Tropical .. De Luxe No. 1 De Luxe No. 2

For Extras and General

Fitting customer's own lens which is in a suitable shutter ready for fitting and
 * 9×12 centimetre Cameras may be had
 We always fit Zeiss Lenses of British make unless specially instructed to the contrary.
 orders. The Price is

JAMES A. SINCLAIR & Co., Ltd., 54, Haymarket, LONDON, S.W.

SINCLAIR'S "UNA" CAMERAS.

$4\frac{1}{2} \times 3\frac{1}{2}$	* 5×4	$6\frac{1}{2} \times 4\frac{3}{4}$	7×5 in. or 13×18 cm.
£ s. d. 6 10 0 7 0 0 7 10 0 8 0 0	£ s. d. 7 10 0 8 5 0 8 15 0 9 5 0	£ s. d. 8 15 0 9 15 0 10 5 0 10 15 0	£ s. d. 9 5 0 10 5 0 10 15 0 11 5 0
7 17 6 8 7 6 8 17 6 9 7 6	9 0 0 9 15 0 10 5 0 10 15 0
9 13 6 10 3 6 10 13 6 11 3 6	10 16 0 11 11 0 12 1 0 12 11 0	15 2 6 16 2 6 16 12 6 17 2 6	15 12 6 16 12 6 17 2 6 17 12 6
11 6 0 11 16 0 12 6 0 12 16 0	12 15 0 13 10 0 14 0 0 14 10 0	14 18 0 15 18 0 16 8 0 16 18 0	17 5 0 18 5 0 18 15 0 19 5 0
12 10 0 13 0 0 13 10 0 14 0 0	14 5 0 15 0 0 15 10 0 16 0 0	16 18 0 17 18 0 18 8 0 18 18 0	19 4 0 20 4 0 20 14 0 21 4 0
13 15 0 14 5 0 14 15 0 15 5 0	16 0 0 16 15 0 17 5 0 17 15 0	18 13 0 19 13 0 20 3 0 20 13 0	20 13 0 21 13 0 22 3 0 22 13 0
15 13 0 16 3 0 16 13 0 17 3 0	16 13 0 17 8 0 17 18 0 18 8 0	20 0 0 21 0 0 21 10 0 22 0 0	22 15 0 23 15 0 24 5 0 24 15 0
15 5 0 15 15 0 16 5 0 16 15 0	18 3 0 18 18 0 19 8 0 19 18 0	20 16 0 21 16 0 22 6 0 22 16 0	21 6 0 22 6 0 22 16 0 23 6 0
16 13 0 17 3 0 17 13 0 18 3 0	19 14 0 20 9 0 20 19 0 21 9 0	22 16 0 23 16 0 24 6 0 24 16 0	23 6 0 24 6 0 24 16 0 25 6 0

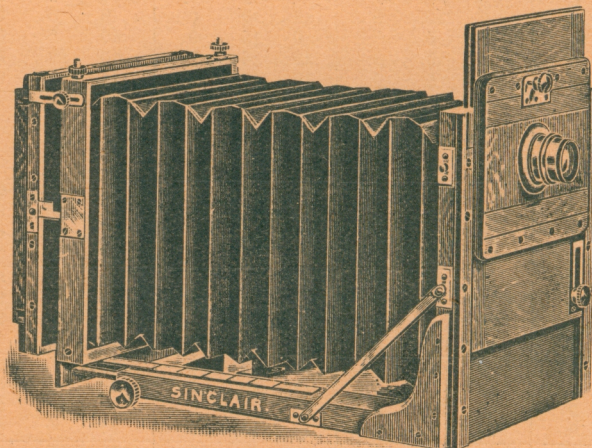
Sundries see General Catalogue.

making one Focussing Scale, 7/6; or fitting and making two focussing scales, 15/0.
at same price as the 5×4 size.

Should the German Lenses be required, extra time must be given for the execution of the same in both cases.

JAMES A. SINCLAIR & Co., Ltd., 54, Haymarket,
LONDON, S.W.

SINCLAIR'S "TECHNICAL" CAMERA.



As supplied to the Indian Government, the Siamese Government, Engineering Works and Scientific Institutions.

Specification.

Camera and slides of finest Spanish mahogany, double extension, improved front giving very great rising and falling movement, improved swing back, check screws to all possible milled heads, reversing frame, horizontal sliding front, dark slides fitted with special spring fastenings, and shutters with rebated hinges.

Camera and 3 double dark slides	$6\frac{1}{2} \times 4\frac{3}{4}$	$8\frac{1}{2} \times 6\frac{1}{2}$	12×10	15×12
Extra dark slides, each ..	£9 0 0	£11 0 0	£16 10 0	£20 0 0
Export Model, special teak and brass-bound camera and 3 slides	11 7 6	13 15 0	20 0 0	24 0 0
Best solid leather case with spring lock	1 15 0	2 12 6	2 Cases. 4 0 0	2 Cases. 6 6 0
Rule joint tripod stand ..	1 2 6	1 2 6	1 11 6	1 15 6
5% discount for cash.				

Messrs. COLE, MARCHENT & MORLEY, Ltd., Prospect Foundry, Bradford, write:—"We congratulate you on the careful attention shown to a number of details which are often omitted."

JNO. B. SCRIVENOR, Esq., Government Geologist, Federated Malay States, writes:—"The whole-plate camera gives every satisfaction."

JAMES A. SINCLAIR & Co., Ltd., 54, Haymarket, LONDON, S.W.

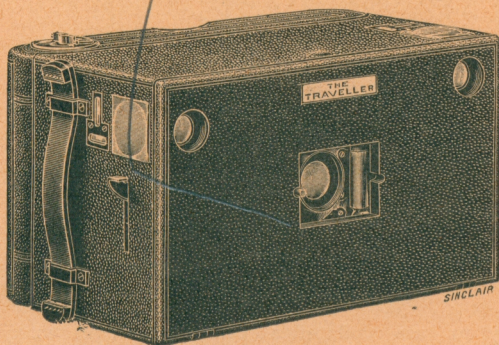
Sinclair's "Traveller" Roll-Film Camera.

For Pictures, $4\frac{1}{2} \times 3\frac{1}{2}$ inches.

No opening of the Camera. No setting of the Shutter.

No focussing required.

It is always in focus. It is always ready for use.



An extended experience of Hand Cameras and hand camera users has shown us that there are a very large number of people who require a camera of the simplest possible description, always in focus for the general range of subjects, and one in which the possibilities of error are reduced to a minimum. It is to fill such requirements that we have introduced the Sinclair "Traveller"

Roll-Film Camera. This camera will not only appeal to the novice but also to the expert who is interested in genre photography and who knows the difficulty in obtaining figure subjects in sharp focus.

The Camera consists of a box, the back of which looks something like a Kodak in that it will take the ordinary Kodak Spool as used for the No. 3 F.P. Kodak Camera. These spools can be universally purchased.

The Lens.—This very important part of the camera is, of course, the feature which makes the outfit perhaps rather expensive at the commencement, but yet cheap when it is considered how much is saved in films by having an accurate instrument. We fit a 90 mm. Series III., F/6.8, Goerz Dagor Lens. This covers the $\frac{1}{4}$ -plate sharply to the corners with the largest stop and at the same time gives enormous depth of focus, and thus enables us to dispense with any focussing adjustment.

The Shutter.—Simplicity has guided us in this and consequently we have selected the Bausch & Lomb "Automat," a shutter which is always set and yet one on which the speed and diaphragm can be altered for various seasons of the year.

The Finders.—Two brilliant view finders are fitted, so that either upright or horizontal pictures may be taken.

The Levels.—Behind each finder is a T level, a useful adjunct if straight lines are required in the pictures.

£10 10 0 Nett Cash.

Code Word—Sostratos.

Best Hand-Sewn Leather Case, with sling and lock and key,... £1 1 0

Code Word—Sostuve.

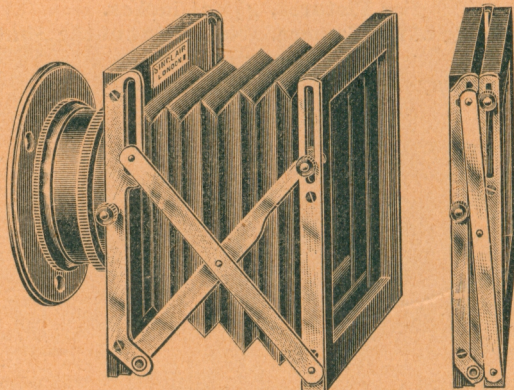
*We can also make specially to order with double rising front, £12 12 0

Code Word—Sosextra.

JAMES A. SINCLAIR & Co., Ltd., 54, Haymarket,
LONDON, S.W.

The Sinclair Collapsible Lens Hood

Gives Brilliant Negatives.



Open on lens.

Closed.

The tendency to use collapsible cameras has, in many instances, led to deterioration in the quality of the negatives obtained, and flat, foggy and indifferent results are often caused through a flood of useless light entering the camera, and being reflected from the surface of the bellows or woodwork on to the plate. Professional photographers have for a long time recognised the value of a hood on their lens, or the use of a black shade or shield. The difficulty in the way of such appliances for field cameras has been the bulk of such accessories, and moreover the lack of effective adjustment.

The Sinclair Lens Hood is adjustable, and may be partially extended when using wide-angle lenses.

The Sinclair Lens Hood is small and may be carried in the waistcoat pocket.

The Sinclair Lens Hood is invaluable for *contre jour* effects.

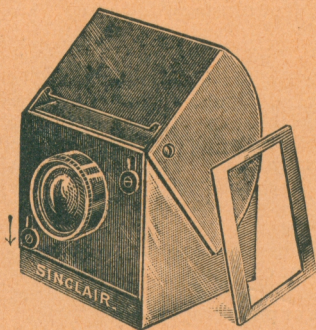
The Sinclair Lens Hood prevents flare, and greatly enhances the brilliancy of negatives.

The Hood may be instantaneously attached or removed from the lens. Size for lenses up to $1\frac{1}{8}$ in. diameter, when closed $3\frac{1}{2} \times 3 \times \frac{1}{8}$. Weight $2\frac{1}{2}$ ounces. Price 12/6 net. Code Word—Spartina.

Send piece of paper circumference of lens tube when ordering.

JAMES A. SINCLAIR & Co., Ltd., 54, Haymarket, LONDON, S.W.

Sinclair's Real Image Finder, with Rising Front.



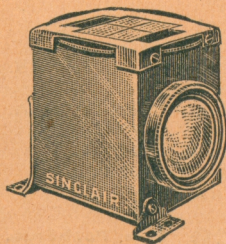
We designed this Finder specially for our $\frac{1}{2}$ -plate "Una" Camera and it can be recommended for any instrument. It consists of a metal box in which there is a mirror, set at an angle of 45° , reflecting the image projected from the front lens on to the ground glass on the upper surface. A groove in the top of the Finder takes metal masks, which can be had of different sizes, showing the view given by any particular lens. The lens of the Finder is arranged in a rising front which can be marked to correspond with the rising front of the hand camera. The rise is

equal to a quarter of the given image. The Finder is readily cleaned and is supplied with two masks, one giving the same image as that of an 8-inch lens and the other that of a 14-inch lens on a half-plate. The masks are reversible and can be used for vertical or horizontal views.

Price, complete with two masks..... 15/0
Extra Masks to order.

Sinclair's Small Real Image Finders, without adjustable masks or rising front, with swing fitting for vertical or horizontal views.

Price 7/6



Sinclair's Brilliant View Finders.

Sinclair's Brilliant Finder as used on our "Una" Hand Camera with revolving mask for vertical and horizontal pictures and swing fittings for turning on slide..... 8/6

Sinclair's extra small Brilliant Finder with levels attached 8/6

THE Sinclair Hand Book of Photography.

Is the Best Guide and Reference Book.

Edited by JAMES A. SINCLAIR, F.R.P.S.

The success of our Photographic and Optical Guide, which, in addition to being a catalogue, was prefaced by a number of articles by the most notable workers in their special departments, has led us to amplify these articles and to add others so that they form an invaluable guide to the beginner, and may be read with profit by the advanced photographer.

Synopsis.

Hints on buying Cameras, Taking the first Photograph, The Dark-Room and its Illumination, Development of the Negative, Printing in various processes, Lantern Slide making, as well as the following special articles on particular branches of photography.

Hand Cameras: Their Selection and Use. By JAS. A. SINCLAIR, F.R.P.S.

The Camera at Home. By E. T. HOLDING. Illustrated.

The Art of Intensifying and Reducing Negatives. By J. MCINTOSH (Secretary of the Royal Photographic Society).

Bromide Printing and Developing. By J. STERRY, Hon. F.R.P.S.

The Gum Bichromatic Process. By J. C. S. MUMMERY, A.R.I.B.A., F.R.P.S. (President of the Royal Photographic Society).

The Rawlins' Process of Oil Pigment Printing (Illustrated). By ROBERT DEMACHY, Hon. F.R.P.S.

The Bromoil Process. By C. H. HEWITT, F.R.P.S.

The Ozobrome Process. By THOMAS MANLY, F.R.P.S.

Oil Ozobrome—A Simplified Oil Process. By THOMAS MANLY, F.R.P.S.

The Autochrome Process of Colour Photography. By R. CHILD BAYLEY (editor of *Photography and Focus*).

Flash Light Photography. By F. J. MORTIMER, F.R.P.S. (Editor of the *Amateur Photographer*).

The Hand Camera and its Possibilities. By JAMES A. SINCLAIR, F.R.P.S.

Carbon Printing. By HENRY W. BENNETT, F.R.P.S.

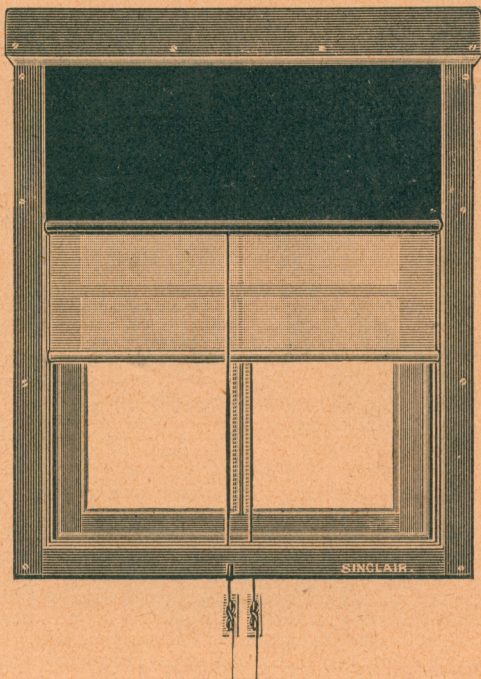
Law for Photographers. By E. B. V. CHRISTIAN, LL.B.

General Photographic Hints, Formulae, etc.

With or without General Catalogue **Price 1/-** Post-Free.

JAMES A. SINCLAIR & Co., Ltd., 54, Haymarket, LONDON, S.W.

Sinclair's Dark=Room Blinds



AT ONCE
CONVERT
ANY
ROOM INTO
A DARK-
ROOM.

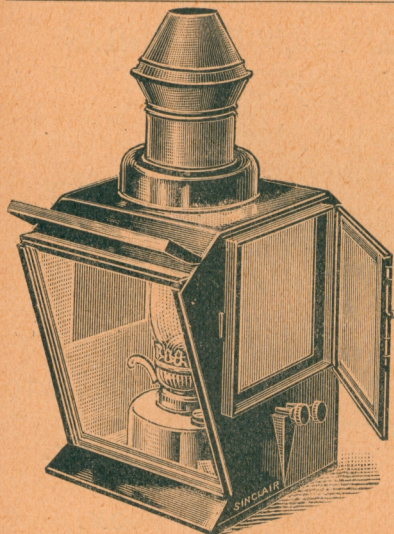
This fitting consists of a well-made varnished wood frame with two grooves, in which red and black blinds travel, and when both are down no trace of white light is admitted. The red blind alone is useful for bromide printing and handling various sensitized papers, but for developing the constancy and safety of a lamp is to be preferred, and for this purpose the black blind is also drawn down. We make the fitting to any measurements, and we shall be pleased to give quotations on application. Screws are supplied with the blind, and all that is necessary is to screw it to the window frame.

Specimen Size and Price.

Size about 5 ft. x 4 ft.	£3 10 0
„ 7 ft. x 4 ft.	£4 4 0

Quotations given for any size.

JAMES A. SINCLAIR & Co., Ltd. 54, Haymarket, LONDON, S.W.



Sinclair's 'Efficient' Lamp

is the

**BEST LAMP for OIL
or ELECTRIC LIGHT.**

"A dark-room lamp really satisfactory in use."—*British Journal of Photography*.

"A piece of apparatus it is difficult to see how to improve."—*Photography*.

"Well worth the money."—*Amateur Photographer and Photographic News*.

We have specially made this lamp for those wanting a really reliable lamp, whether for oil or electric light. It is a large lamp; but the larger the lamp the better, provided it is fitted with a safe light. Instead of the usual badly-made oil reservoir and worse burner in the ordinary commercial articles, we have a **large oil reservoir** made from **solid drawn metal**, and which is consequently unbreakable. The burner is a **best quality duplex**, and the two wicks being actuated from the outside, the light can be of great or little intensity at will.

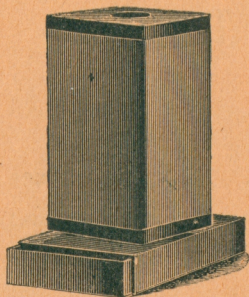
The front of the lamp slopes so that the light is thrown down on to the work table, and carries any combination of non-actinic material in three grooves—one of which is wide enough to take a thick glass Wratten Safe Light, 12×10 in size. Both sides of the lamp have grooves, each holding two fabric frames, yellow and ruby, 8½×6½ inches, and on one side the groove is arranged in a door which may be opened if white light is required for exposing or any other purpose.

When arranged for electric light, a double bayonet electric fitting is connected with a reversible switch, thereby enabling the operator to have either a white light on the top of the lamp, or the usual light from the inside of the lamp as desired.

Price, with Oil Reservoir and best Duplex Burner, as described	£1 1 0
Ditto, fitted for Electric Light, giving light from inside or outside at will	1 5 0
Extra for 12×10, Wratten Safe Light	0 5 0

JAMES A. SINCLAIR & Co., Ltd., 54, Haymarket, LONDON, S.W.

Sinclair's Tropical Folding Lamp.



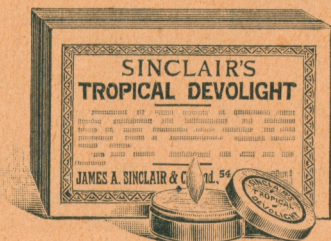
This lamp is of a well-known form, but consists of a folding fabric frame, yellow inside and ruby outside, with the top and bottom of the lamp drawn out of **solid copper**. Consequently the lamp does not rust, and no light leaks from the corners.

Supplied in cloth-covered case large enough to hold four lights in addition.

Price 2/6

A cheaper form in Russian iron, price 1/0

Sinclair's Tropical Devolights.



These lights give a powerful light far better than the usual night-light. They are made of very hard wax, which does not melt or run during transit in tropical countries. The metal tins holding the lights are made of drawn metal.

Price,

2d. each, 1/9 per box of twelve.

Sinclair's Improved Drying Rack.

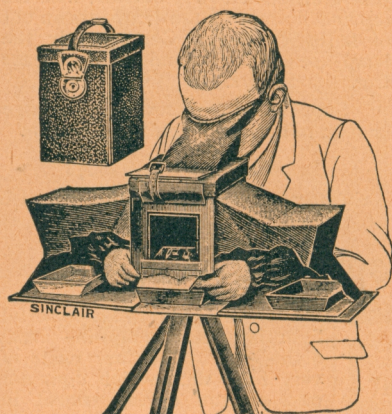


Most Draining Racks are not well suited for drying plates. The "Ideal" Rack is the best for draining and drying, and will be welcomed in every dark-room. The grooves are wide apart, and are so cut that, although the plate is held perfectly, yet air can get to the extreme edges. It will take 21 plates and is suitable for Lantern size to $8\frac{1}{2} \times 6\frac{1}{2}$. Larger sizes may be had to order.

Price 4/0 each.

JAMES A. SINCLAIR & Co., Ltd., 54, Haymarket, LONDON, S.W.

Sinclair's "Compact" Changing and Developing Tent.



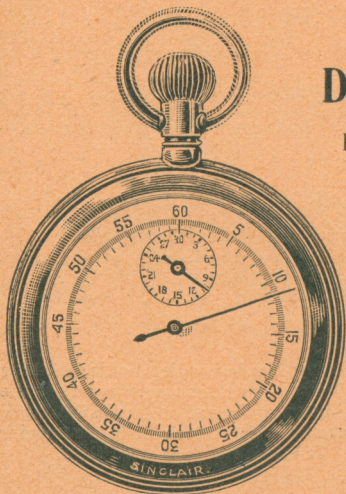
A Carrying Case
and Changing and
Developing Tent
in one.

Invaluable for the
Traveller.

Every traveller and tourist knows the trouble of the dark-room. The ones placed at his disposal at hotels and on board ship are often more remarkable for the amount of light they let in, rather than for the quantity they keep out. Even if he wishes to change his plates in a bedroom at night, he will often find a piece of glass over his door preventing him effectually shutting out light from a corridor outside. The Compact Tent removes every difficulty, and when not in use as a dark room will hold camera, slides or plates. The window is then replaced by a metal plate. Made in three sizes— $\frac{1}{4}$ -plate, $\frac{1}{2}$ -plate, and $\frac{3}{4}$ -plate.

For Plates.	Size.	Weight.	Price in Imitation Leather.	Code Word.	Price in Leather.	Code Word.
$4\frac{1}{4} \times 3\frac{1}{4}$	$8 \times 5 \times 8\frac{3}{4}$	2 lbs.	£1 10 0	Sotaque	£2 0 0	Soterrado
$6\frac{1}{2} \times 4\frac{1}{2}$	$12 \times 7\frac{1}{2} \times 11\frac{1}{4}$		£2 0 0	Sotavento	£2 10 0	Soterrais
$8\frac{1}{2} \times 6\frac{1}{2}$			£2 10 0	Soteribus	£3 5 0	Soterro

JAMES A. SINCLAIR & Co., Ltd., 54, Haymarket, LONDON, S.W.



Sinclair's Dark-Room Watch

For Time Development.

This watch has the dials so arranged that one revolution of the large hand is made in one minute, and the divisions are divided to $\frac{1}{5}$ th second. The smaller hand records the minutes up to 30 minutes. One pressure of the winding knob starts the watch, a second pressure stops it, while a third re-sets the hand at zero.

Price 25/0

Sinclair's "Lustros"



For giving richness
and depth to all
Photographic
Prints.

This preparation is conveniently put up in tubes, and is guaranteed made from the finest and purest ingredients.

It is for use on all kinds of photographic prints,—platinotype, carbon, bromide, and other silver prints, *but must not be used on oil prints.*

It adds brilliancy to the prints and imparts depth and transparency to the shadow details.

It forms a perfect protecting surface and enhances the permanency of silver and bromide prints, which are liable to be affected by and deteriorate under the influence of damp and impure air.

Directions.

Sufficient of the preparation should be squeezed out on to a clean dry rag, and rubbed quickly and evenly over the print. Allow a few seconds to elapse, then polish off with a soft, dry and fluffless cloth.

In Tubes—Price Sixpence.

JAMES A. SINCLAIR & Co., Ltd., 54, Haymarket,
LONDON, S.W.



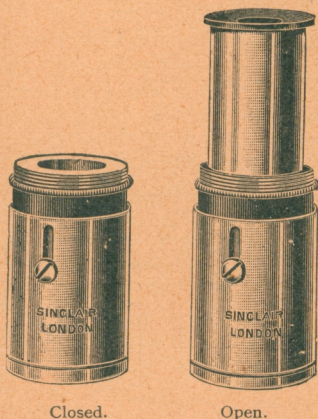
Sinclair's "Electra" Flash Lamp.

The best lamp for travellers.
No larger than a cigar case.

This lamp consists of a light aluminium box which holds a battery connected with a piece of platinum wire. The flash powder laid in the lid of the box is fired on pressing a button at the end of the flexible cord, the light from the incandescent platinum being conveyed to the powder by means of touch-paper matches. It is simple, rapid and sure.

Price, complete } 6/6 with dry battery.
with 50 matches. } 6/9 with export battery, which only requires
water before use.

Extra Batteries, 1/0 each. 100 Matches, 7d.
The "Agfa" Powder is recommended for this lamp.



Sinclair's "Regent" Magnifier.

Sinclair's "Regent" Focussing Magnifier is the most useful magnifier for general use. When extended it is of sufficient length for use with hand cameras and stand cameras with focussing hoods. Each instrument is sent out in a leather pocket case. Length closed, $2\frac{3}{8}$ in. length open, $4\frac{1}{2}$ in.

Price 12/6

JAMES A. SINCLAIR & Co., Ltd., 54, Haymarket,
LONDON, S.W.

Sinclair's Watertight Metal Cases for Photographic and Scientific Outfits.

Where outfits are required for hot and moist climates we especially recommend "**Una**" **Water-tight Cases**. These cases will preserve apparatus indefinitely, and are absolutely reliable. Each case is made of steel, heavily japanned, and is fitted with one or two 3-lever locks. When specially made for outfits consisting of camera, slides, etc., for say, $\frac{1}{2}$ and 1/1-plate sets, the approximate cost is £3 10s.

Standard sizes can be had for uniform cases, the inside being without divisions or unlined at the following prices:—

24 in.	..	27 in.	..	30 in.	..	33 in.	..	36 in.
44/6	..	53/4	..	62/3	..	80/0	..	98/0

We guarantee that each case has been tested by filling it with dry sawdust, closing it and immersing it bodily in water for at least an hour. Any case that shows any signs of damp is rejected.

Extraordinary Recovery of Valuable Outfit through using one of our "Una" Cases.

His Excellency Capt. F. R. Barton, writes from **Government House, Port Moresby, British New Guinea**, on September 5th, 1905.

"The full plate camera which I bought from you has been recovered. From the end of February last to early in June this camera, contained in the water-tight box you made for it, drifted about the ocean, and it was eventually washed ashore at York Island, and was there found by some natives who took it to Thursday Island. You will be astonished to hear that in spite of its long immersion, the whole apparatus inside the box was found, when the latter was opened, to be absolutely undamaged; not even the remotest trace of damp having found its way inside."

JAMES A. SINCLAIR & Co., Ltd., 54, Haymarket, LONDON, S.W.

THE OIL AND BROMOIL PROCESSES.

Sinclair's Oil Pigment Brushes.

(Genuine "Putois pied de biche")

The quality of the Brush is as important as the quality of the ink. All sorts of brushes have been recommended, but we believe that there is nothing to equal the brushes recommended by M. Demachy. These are made from the hair of the pole cat, and the hair is arranged in the making so that on the bevel it is beautifully domed. Consequently with a large brush it is quite possible to do small fine work. Our prices for these brushes are exceedingly low. For a beginner purchasing only one brush we recommend one of the larger sizes, but an equipment of several will be found very advantageous, a clean or dry brush being frequently in demand.

No. 0, 11d.	*No. 3, 1/4	*No. 8, 3/-	No. 14, 6/6
No. 1, 1/0	*No. 5, 1/9	*No. 10, 4/-	No. 18, 10/6
No. 2, 1/2	No. 7, 2/6	No. 12, 5/-	No. 33, 30/-

Extra small size for detail work...A, 3d. B, 4d. C, 5d. D, 6d.

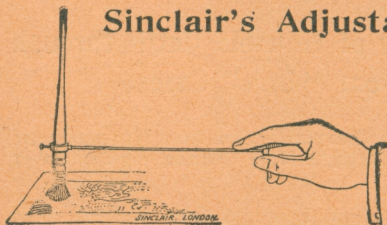
*Nos. 3, 5, 8 and 10 are also supplied "straight cut" for use with the "Hopper."

The "Mortimer" Brush.

This brush is made of long and fine hog hair, shaped like our Fitch brushes, and will be appreciated by those who desire broad effects. It is used by the Editor of the *Amateur Photographer*.

No. 1— $\frac{3}{4}$ inch	5/-	No. 3— $1\frac{1}{4}$ inch	8/-
No. 2—1 inch	6/6	No. 4— $1\frac{1}{2}$ inch	10/-

Sinclair's Adjustable Hopper.



This hopper will take any brush from No. 1 to No. 10. Adjustable grip and polished wood handle, 1/0.

Hopper Brushes—

No. 3, 1/4; No. 5, 1/9; No. 8, 3/0; No. 10, 4/0.

Sample Outfits. (For Prints $6\frac{1}{2} \times 4\frac{3}{4}$ inches.)

For the Oil Process.

1 No. 8 Brush; 1 "B" Brush; 1 Pot Pigment; 1 Tube Medium;
1 packet Oil Pigment Paper; 1 Bottle Spirit Sensitizer, 6/8

For the Bromoil Process.

1 No. 8 Brush; 1 "A" Brush; 1 doz. Bromide Paper; 1 Bromoil Solution; 1 Pot Pigment; 1 Tube Medium, 7/0.

JAMES A. SINCLAIR & Co., Ltd., 54, Haymarket, LONDON, S.W.

For Oil and Bromoil Work Use SINCLAIR'S PERMANENT PIGMENTS, In Pots or Tubes.

Do not drag on the brush.
Are made in a variety of permanent colours.
Are very brilliant.
Are rapid in action.
Dry quickly after the support has been dried.



The composition of most of the lithographic printing inks used for the oil pigment process has caused many beginners to believe that success could only be obtained after the expenditure of much time and trouble. Such inks, often used in conjunction with entirely unsuitable brushes, cover the print with broken hairs and dirt, and are, moreover, so slow in action that all spontaneity is lost in the laboured print. While we admit that there is no royal road to success with the oil process, yet with suitable inks and suitable brushes the technics can be mastered after one or two trials.

The success of our Pot colours has been exceedingly great, and the majority of users appreciate them because of their great depth and richness of effect. Perhaps their only defect is the drying which takes place as they age, and, although they can always be worked up with medium on a ground glass palette, some of our friends object to this labour. We are, therefore, putting our colours in tubes as well as in pots, but to do this have to slightly reduce the consistency. Tube colours will be found just as good as pot colours for all ordinary work, but in cases where very great depth and strength is desired, pot inks are preferable.

Pigments in Pots.

Standard Black	Brown Black	Sepia	Indigo
Payne's Grey	Burnt Umber	Burnt Sienna	Red Chalk
Italian Green	Warm Sepia	* "Encre Machine," a hard ink	

* "Encre Taille Douce," a soft ink which may be mixed with the "Encre Machine" Price 1/0 per pot.

* The last-named are those used by Messieurs Robert Demachy, Puyo and other celebrated workers of the French school.

Special Inks for Colour Effects.

A number of workers are very interested in getting effects in colour, and in response to many demands we have added the following to our list:—

Yellow.	Antwerp Blue.	Raw Sienna	Permanent Crimson.
---------	---------------	------------	--------------------

Price 1/6 per pot.

Foliage Green. Price 2/0 per pot.

Pigments in Tubes.

Tube Inks are supplied in the following colours only:—

Standard Black	Italian Green	Burnt Umber	Sepia	Indigo
Payne's Grey	Brown Black	Warm Sepia	Burnt Sienna	Red Chalk
Price 1/0 per tube.				

JAMES A. SINCLAIR & Co., Ltd., 54, Haymarket, LONDON, S.W.

SINCLAIR'S "HEWITT" Pigmenting and Retouching Desk.



The Best Desk for Oil and Bromoil Work.

The Best Desk for Spotting.

The Best Desk for Retouching.

The Best Easel.

The Best Desk for Trimming Prints.

Although primarily intended for pigmenting Oil and Bromoil Prints, this desk will be found an exceedingly useful adjunct in every work-room.

The "Hewitt" Desk is, in general form, like a retouching desk with a substantial base, containing a large drawer, 19 x 19 x 1½ inches, in which all requisites for pigmenting, spotting and retouching may be kept.

The hinged frame above the base holds a sheet of plate glass, 18 x 18 inches, and this glass supports the wet blotting paper on which the print is placed for pigmenting at a convenient angle. Above the frame and attached to it by sliding hinges, so that it may be removed when desired, is a cover, consisting of a mahogany frame in which is recessed a sheet of metal. When this cover is closed over a wet oil or bromoil print the moisture is retained, and the print may be kept in good condition for days, should it not be possible to ink it immediately.

The "Hewitt" Desk for Retouching. A sliding bar, which clamps on to the framework of the desk, may be adjusted to any desired position for supporting negatives resting on the plate glass surface and converts the apparatus into an exceedingly rigid and effective retouching desk. A sheet of white paper on the base of the desk forms an admirable reflector for reflecting light through the negative.

The "Hewitt" Desk for spotting prints or as a work-room table. For this purpose the plate-glass is removed and a board supplied is fitted in its place. An excellent and clean desk that may be used flat or at a convenient angle is at once secured.

The "Hewitt" Desk as an Easel. The work being finished, the desk may be set nearly vertical and the print is examined in comfort. Mounted prints are supported by a ledge at the bottom of the desk.

For many purposes the "Hewitt" Desk will be appreciated. It is exceedingly handy for trimming, mounting, or indeed any work-room purpose where a clean table or desk is necessary.

The "Hewitt" Desk, made in polished mahogany, with 18 x 18 plate glass, adjusting carrier, plain board, for table and cover as described,

£1 11 6 Nett Cash.

JAMES A. SINCLAIR & Co., Ltd., 54, Haymarket, LONDON S.W.

Fourth Edition.

Revised and Enlarged.

How to make Oil and Bromoil Prints.

In it the Rawlins Process of Oil Pigment Printing is described by MONSIEUR ROBERT DEMACHY, the leading French exponent of Oil Printing, and the Bromoil Process is treated by MR. C. H. HEWITT, F.R.P.S., while MR. THOMAS MANLY, F.R.P.S., describes a simplified oil process.

With Two Portraits and Four Comparative Illustrations.

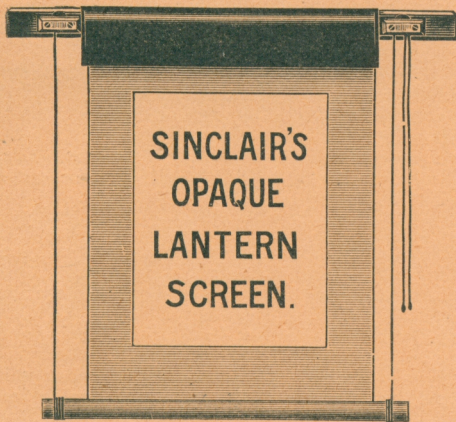
"Just what the oil printer should have at his hand since it gives the advice of a master-worker without unnecessary words."—*British Journal of Photography*.

"Useful not only to a beginner, but also will give valuable hints to those who are not novices in the process."—*Amateur Photographer and Photographic News*.

"Its instruction is all terse and practical."—*The Photogram*.

PRICE SIXPENCE, POST-FREE.

Sinclair's Opaque Screen.



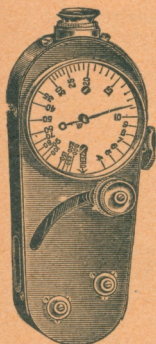
Every lanternist knows the value of an opaque screen, which greatly enhances the brilliancy of the result. The most convenient form of mounting is that adopted with Sinclair's Opaque Screen. It is composed of a closely woven fabric, distempered and mounted on roller with cord and pulleys, which enable it to be easily rolled up and down. The lath which holds the screen from the top has a hole at

either end through which a cord may be placed to hang on nails from a wall, or from an ordinary window curtain pole. When rolled up the screen is efficiently protected from dust by a waterproof covering.

6 ft.	7 ft.	8 ft.	9 ft.	10 ft.	12 ft.
20/0	.. 22/6	.. 25/0	.. 30/0	.. 40/0	.. 55/0

Larger Sizes to order.

JAMES A. SINCLAIR & Co., Ltd., 54, Haymarket, LONDON, S.W.



Sinclair's No. 2 "Owen" TOPOMETER

(PATENT).

The Perfect Range Finder.

"This Remarkable Instrument."—*The Broad Arrow*.

"The Ideal Range Finder. This beautiful instrument combines the 'desiderata' of lightness, portability, simplicity and accuracy."—*War Office Times and Naval Review*.

"That this clever invention will meet with the success it undoubtedly deserves would appear a foregone conclusion."
The Army and Navy Chronicle.

Some advantages and Uses of the Topometer.

MILITARY.

The Topometer can be used for taking ranges and dimensions of any distant object with great exactness by one man.

The Topometer registers the ratio of distance to base, and makes the base at the point observed.

The Topometer will measure the distance of an object without the observer having to move in a lateral direction.

The Topometer may be used as a Depression Range Finder, without the necessity for a pedestal or levelling.

The Topometer during attack, when, owing to enemy's fire, only a momentary observation is possible, will give the range without the necessity for leaving cover.

NAVAL.

The Topometer may be used as a Range Finder from a fighting top.

The Topometer may be used from sea level when attacking permanent land fortifications.

The Topometer is the best instrument for Station Keeping and Coast Navigation.

The Topometer is unrivalled for rapid sextant work when it is advantageous to avoid the delay of consulting mathematical tables.

SURVEYING.

The Topometer used with a Plane Table is the best instrument for Rapid and Accurate Survey Work.

**THE TOPOMETER DOES NOT NEED A DEFINITE BASE,
MATHEMATICAL TABLES OR DIFFICULT CALCULATION.**

Weight in case complete, $2\frac{1}{2}$ lb. **Price £6 6 0 Nett Cash.**

Send for the Topometer Booklet.

Manufacturers and Licensees—

James A. Sinclair & Co., Ltd.,

54, HAYMARKET, LONDON, S.W.