

GOLTZ and BREUTMANN,**“Mentor”****Camera Factory,****DRESDEN A.43.**

The New Style of Camera

“MENTOR” FOLDING REFLEX.

IN 6 SIZES.Thickness of Camera
when closed.

$3\frac{1}{2} \times 2\frac{1}{2}$ inches,	only $1\frac{5}{8}$ inches.
$4\frac{1}{4} \times 3\frac{1}{4}$ „	„ $1\frac{3}{4}$ „
5×4 „	„ 2 „
Postcard		
$5\frac{1}{2} \times 3\frac{1}{2}$ „	„ 2 „
$6\frac{1}{2} \times 4\frac{3}{4}$ „	„ $2\frac{3}{8}$ „
7×5 „	„ $2\frac{3}{8}$ „

Of absolutely light-tight construction, most convenient in use, full movements and light weight.

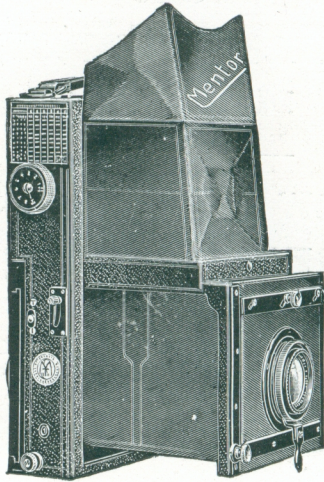
Mirror and focussing screens are fixed absolutely in focus.

The entire mechanism is exceedingly durable and never fails. Ready for use in an instant : Press—Pull—Press.

SALES DURING THE FIRST SEASON (1913) OVER 500.

GOLTZ & BREUTMANN, DRESDEN, A.43.

“Mentor” Folding Reflex. The Latest Style of Camera.



Ready for an Exposure.

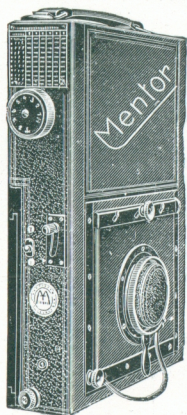
The new “Mentor” Folding Reflex Camera is an instrument of single extension pattern, focussing being done upon the upper ground glass by means of an optically worked surface-silvered mirror. Adjustment of the lens for different distances is provided by a focussing mount. The image is seen the right way up and of full size up to the instant of exposure exactly as it will appear on the plate. In this model the notable feature is the extreme thinness of the camera body, this latter being constructed of correspondingly greater height. In the $3\frac{1}{2} \times 2\frac{1}{2}$ inch size the thickness is only $1\frac{1}{8}$ inches; in the 7×5 size, $2\frac{3}{8}$ inches. A further advantage of the construction is that the hood above the focussing screen is of ample depth. Closed the camera resembles an ordinary roll film instrument; it is of full rigidity when extended.

The whole mechanism is of a description for hard wear, and we guarantee it for reliability in use.

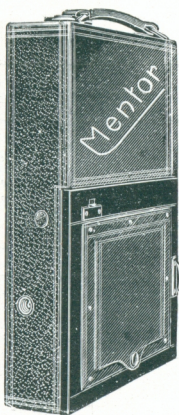
GOLTZ & BREUTMANN, DRESDEN A.43.

"Mentor" Folding Reflex.

The Latest Style of Camera.



Front view. Camera closed.

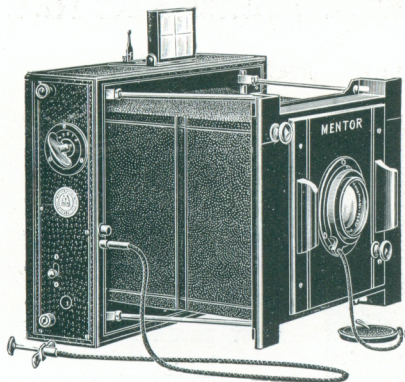


Back view. Camera closed.

The production is in the manner of our other popular "Mentor" cameras. Camera body, of wood and light metal: covered with best morocco leather: rise and fall as well as cross-front movement of camera front: lens board of light metal varnished to match the morocco leather: back body of camera of polished imitation ebony. Self-erecting hood and bellows of best skived leather. Carrying and shoulder straps and two bushes for tripod screw. The focal-plane shutter is the "Mentor," with speeds indicating and adjusted, in both cases outside the camera. It works to a speed of 1-1300th of a second. In this model also the mechanism is reduced to the simplest description. Apart from increasing the speed by winding the spring-tension key, the shutter is operated by two milled heads only—namely, (1) the large winding key controlling also the alteration of speed and (2) the release lever. The camera is provided with three double dark-slides (model B) with ebonite shutters and aluminium fittings: all other adjustments, e.g., film pack, roll holders, changing boxes, etc., can be used, as also single metal dark-slides by means of an adapter. The whole mechanism is of a description for hard wear, and we guarantee it for reliability in use.

GOLTZ & BREUTMANN, DRESDEN A.43.

FOCAL PLANE CAMERA, "MENTOR II."



Of the collapsible type, folds into a very small space for carrying, and can be brought into action in an instant.

Finest constructed camera, covered with real hard leather, rising, falling and cross front, focal plane shutter of latest type, giving time exposures of any length and instantaneous exposures to $\frac{1}{1300}$ th sec., indicating dial for width of slot (altered from outside) with speed scale attached, antinuous release, two bushes for tripod, direct vision view finder, etc. Lenses are fitted in focussing mounts.

Size.	—	With	With Zeiss		Solid Leather Case for Camera and 3 D. Slides.
		Goerz Dagor, f/6.8.	Tessar, f/6.3.	Tessar, f/4.5.	
	£ s. d.	£ s. d.	£ s. d.	£ s. d.	
$3\frac{1}{2} \times 2\frac{1}{2}$ " 6 × 9 cm.	5 0 0	10 15 0	10 0 0	10 10 0	15/-
$3\frac{1}{2} \times 4\frac{1}{2}$ " 9 × 12 cm.	5 10 0	12 15 0	11 0 0	12 12 0	18/-
4×5 " 10 × 12½ cm.	6 10 0	13 15 0	13 0 0	14 15 0	20/-
$3\frac{1}{2} \times 5\frac{1}{2}$ " 10 × 15 cm.					
$4\frac{1}{2} \times 6\frac{1}{2}$ " 12 × 16½ cm.	7 0 0	15 5 0	16 5 0	18 0 0	25/-
5×7 " 13 × 18 cm.					
2×5 " 6 × 13 cm.	6 0 0	17 18 0	15 8 0	16 8 0	15/-
$3\frac{1}{2} \times 5\frac{1}{2}$ " 10 × 15 cm.	7 0 0	19 8 0	17 18 0	18 8 0	20/-
$3\frac{1}{2} \times 6\frac{3}{4}$ " 9 × 18 cm.	7 10 0	19 18 0	19 18 0	20 8 0	25/-

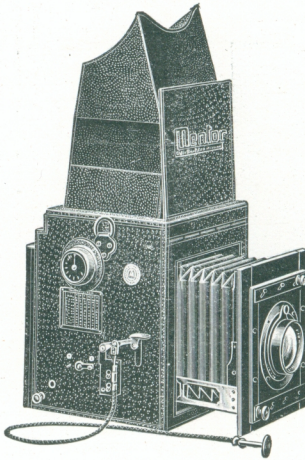
Stereo with
Panoramic.

FURTHER ACCESSORIES SEE PAGE 1365.

COMPLETE LIST ON APPLICATION.

GOLTZ & BREUTMANN, DRESDEN A.43.

"Mentor" Reflex.



The most perfect
Reflex in the World.
Simple to handle.
Reliable in action.
Greatest durability.
Best materials used
throughout.

Revolving back, with automatic mask showing the exact size picture that will appear on plate, for either horizontal or vertical pictures.

All mechanism on one (right hand) side of camera.

Strong metal struts supporting extension, actuated by rack and pinion.

Focal-plane Shutter absolutely free from vibration. On order front to be fitted with spring flap, useful for sky shade and to protect lens.

For prices, dimensions, etc., etc., see page 1365.

THE TROPICAL "MENTOR" REFLEX.

The camera is built of the finest selected teak, a wood renowned for its great damp and heat resisting qualities, and is warranted to stand, without the slightest fear of warping or twisting, the most trying climates. Each joint is dovetailed and glued and a dowel pin driven through, thus making a joint which it would be difficult to sever.

Camera, with 3 D.D. Slides of Teak wood and Brass bound.		With Goerz Dagor <i>f</i> /6·8	With Zeiss Tessar <i>f</i> /6·3 Tessar <i>f</i> /4·5		
		£ s. d.	£ s. d.	£ s. d.	£ s. d.
3 $\frac{1}{4}$ " × 4 $\frac{1}{4}$ "	9 × 12 cm.	17 10 0	24 15 0	24 10 0	25 10 0
6 $\frac{1}{4}$ " × 4 $\frac{3}{4}$ "	12 × 16 $\frac{1}{2}$ cm.	23 15 0	32 10 0	32 5 0	33 15 0
5" × 7"	13 × 18 cm.				

Extra Double Slide, $\frac{1}{4}$ -plate (9 × 12 cm.), 15/-; $\frac{1}{2}$ -plate (5 × 7 in.), 25/-.

Solid Leather Case for tropics (for Camera and 3 Slides),

$\frac{1}{4}$ -plate, 35/-; $\frac{1}{2}$ -plate, 50/-

GOLTZ & BREUTMANN, DRESDEN, A.43.

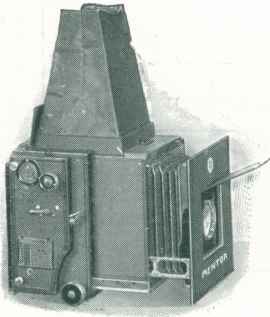
MENTOR REFLEX. The most perfect Reflex in the World!

Size of Plate in inches and centimetres	Square, with reversing back.							Rectangular, without reversing back.					
	$3\frac{1}{2} \times 2\frac{3}{4}$ 6 × 9*	$3\frac{1}{2} \times 4\frac{1}{4}$ 1-Plate. $3\frac{1}{2} \times 3\frac{1}{2}$ ** 9 × 9**	$3\frac{1}{2} \times 4\frac{3}{4}$ 9 × 12	4 × 5 10 × 12·5	$3\frac{1}{2} \times 5\frac{1}{2}$ post- card. 10 × 15	$6\frac{1}{2} \times 4\frac{3}{4}$ 1-Plate. 12 × 16·5	5 × 7 13 × 18	$3\frac{1}{2} \times 2\frac{1}{2}$ 6 × 9	$3\frac{1}{2} \times 4\frac{1}{4}$ 8 × 10·5 $3\frac{1}{2} \times 4\frac{3}{4}$ 9 × 12*	$3\frac{1}{2} \times 5\frac{1}{2}$ post- card. 10 × 15	$6\frac{1}{2} \times 4\frac{3}{4}$ 12 × 16½ 5 × 7* 13 × 18*	Stereo with Panoramic. $5\frac{1}{2} \times 3\frac{1}{2}$ 10 × 15 $3\frac{1}{2} \times 6\frac{3}{4}$ 9 × 18	
Minimum Extension	5"	6½"	7"	7"	8"	8½"	8½"	3½"	5" or 6"	6"	7"	6"	5"
Maximum Extension	7½"	10½"	11½"	11½"	13½"	14"	14"	5½"	7½" or 9"	9"	11½"	9"	7½"
Camera, with 3 Double Dark Slides, Aluminium bound, and Ebonite Shutters	£ s. 8 15	£ s. 11 5	£ s. 12 10	£ s. 13 15	£ s. 16 5	£ s. 17 10	£ s. 18 15	£ s. 7 10	£ s. 10 0	£ s. 11 5	£ s. 12 10	£ s. 13 15	£ s. 15 0
With "Goerz" Dagor, f/6·8	14 0	17 10	19 15	21 0	25 0	26 5	27 10	12 10	16 5	17 10	19 15	26 15	26 0
With "Voigtländer" Heliar, f/4·5.	15 0	19 10	20 15	22 0	27 15	31 0	32 5	13 5	16 10	19 10	26 0	27 8	28 0
With "Zeiss" Tessar, f/6·3	13 0	17 5	19 10	20 15	24 15	26 0	27 5	11 10	15 0	17 5	21 0	24 8	25 0
With "Zeiss" Tessar, f/4·5	14 8	18 10	20 10	21 15	26 5	27 10	28 15	12 0	16 10	18 10	22 10	27 8	27 0
Extra Double Dark Slides	10/-* 12/-**	12/-	12/-	13/-	14/-	15/-	15/-	10 0	12/-	14/-	15/-	14/-	15/-
Film-pack Adapter	12/-	12/-	12/-	14/-	15/-	18/-	18/-	12 0	12/-	15/-	18/-	15/-	18/-
Changing Box for 12 Plates ..	45/-*	48/-	48/-	54/-	60/-	75/-	75/-	45 0	48/-	60/-	75/-	60/-	60/-
Roll Film Holder	26/-	—	28/-*	30/-	—	—	36/-	26 0	28/-*	—	36/-*	—	36/-
Adapter for Metal Slides ..	5/-	5/-	5/-	6/-	6/-	7/6	7/6	5 0	5/-	6/-	7/6	6/-	7/6
Single Metal Slides	1/-* 1/3**	1/3	1/3	1/6	1/6	1/9	1/9	1 0	1/3	1/6	1/9	1/6	1/9
Adapter for Autochrome, to be used with Metal Slides	5/-	5/-	5/-	6/-	6/-	7/6	7/6	5 0	5/-	6/-	7/6	6/-	7/6
Solid Leather Case—													
For Camera and 3 Slides ..	20/-	22/-	25/-	26/-	30/-	33/-	35/-	15 0	22/-	23/-	25/-	23/-	25/-
For Camera and 6 Slides ..	22/6	25/-	28/-	30/-	35/-	38/-	40/-	17/6	25/-	26/-	28/-	26/-	28/-
Antinous Release	6/6	6/6	6/6	6/6	6/6	6/6	6/6	6/6	6/6	6/6	6/6	6/6	6/6

The rectangular model of the Mentor Reflex for horizontal pictures is a special one of little weight and smaller dimensions, and can be used also for vertical pictures, for which a tripod screw is mounted in the left side of the body. The stereoscopic model is adapted for panoramic; the division is removable, and the lens panel is changeable equal to all sizes of the Mentor Reflex.

“Mentor” Folding Reflex.

With Rotating Back $3\frac{1}{2}$ by $4\frac{1}{4}$ inches (9 by 12 cm.)



OPEN.



CLOSED

The “Mentor” square reflector camera is constructed for both upright and oblong pictures 9 by 12 cm. size and closes for carrying. Its bulk when closed has been reduced to a minimum considering the full range of movements of the camera and its reliable and convenient action in use. The camera consists of a frame open at the top and front in which rests, open towards the rear and top, a body which is readily racked forward and in which are enclosed the bellows and camera front with lens attached. It likewise encloses, when the camera is closed, the folding focussing hood and ground glass screen, the latter provided with automatic mask showing the correct picture, oblong or upright: it also contains the mirror. The outside frame, in combination with the inner structure, thus forms the camera body, into which the mirror is so fitted that it is self-operating, on the camera being opened or closed. The focussing screen and self-erecting hood likewise automatically come into place. On closing the camera, the focussing screen, in its frame, falls down into place, the hood likewise, and the two are enclosed, together with the mirror, inside the camera. It is specially to be noted that when the camera is open the mirror does not hang loose but rests firmly against the supports in the inner body.

Camera, with 3 best D.D. Slides	£15	0	0
“ with Goerz Dagor, <i>f</i> /6·8	22	5	0
“ with Voigtländer Heliar, <i>f</i> /4·5	23	5	0
“ with Zeiss Tessar, <i>f</i> /6·3	22	0	0
“ with Zeiss Tessar, <i>f</i> /4·5	23	0	0

For prices of the different accessories see page 1365.

GOLTZ & BREUTMANN, DRESDEN A.43.