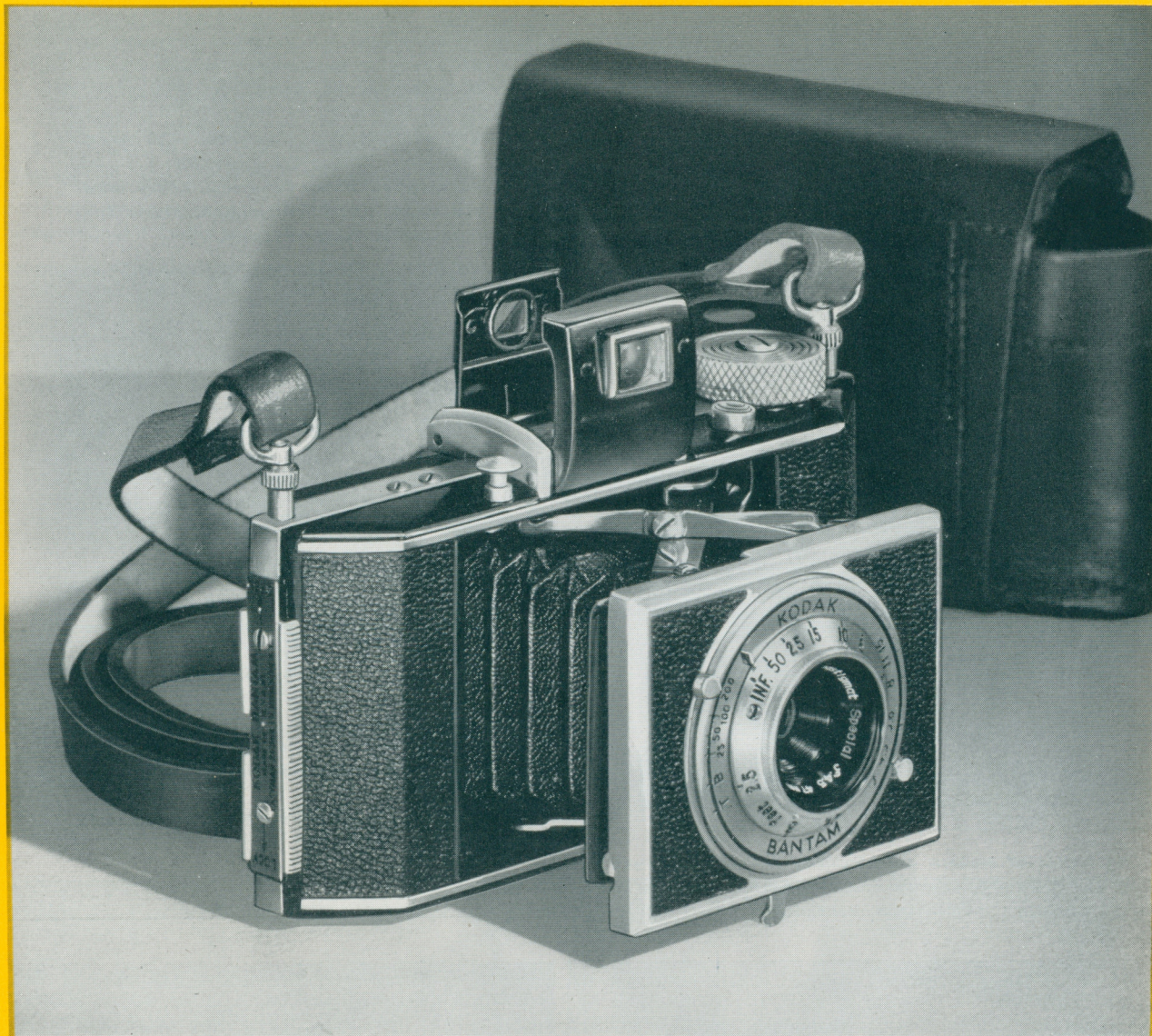


KODAK BANTAM

with Kodak Anastigmat Special f/4.5 Lens



KODAK BANTAM f/4.5 is a miniature type camera of unusually small size, yet, as a result of modern photofinishing methods, enlarged prints—2¾ x 4 inches—are generally available. It loads with 8-exposure No. 828 Kodak Film.

One of the most convenient cameras ever designed, it is so compact it fits easily into a pocket.

With its Kodak Anastigmat Special f/4.5 lens it produces black-and-white pictures or full-color Kodachrome transparencies of excellent quality.

Kodak Bantam f/4.5 is widely popular for general picture taking because it is so easy to take along and so easy to use. It can be trusted to get good pictures indoors under artificial light.

Because of its combination of features and its good performance, it is well adapted for use in several fields.

FIELDS OF USEFULNESS

Amateur Picture Takers make record pictures, scenics, and full-color Kodachrome pictures for projection and for Minicolor prints.

Industrial Photographers make photographs of manufacturing processes, construction progress photographs, studies of methods, plant layout studies, etc.

Research Workers record methods and results.

Production Men make routine record photographs.

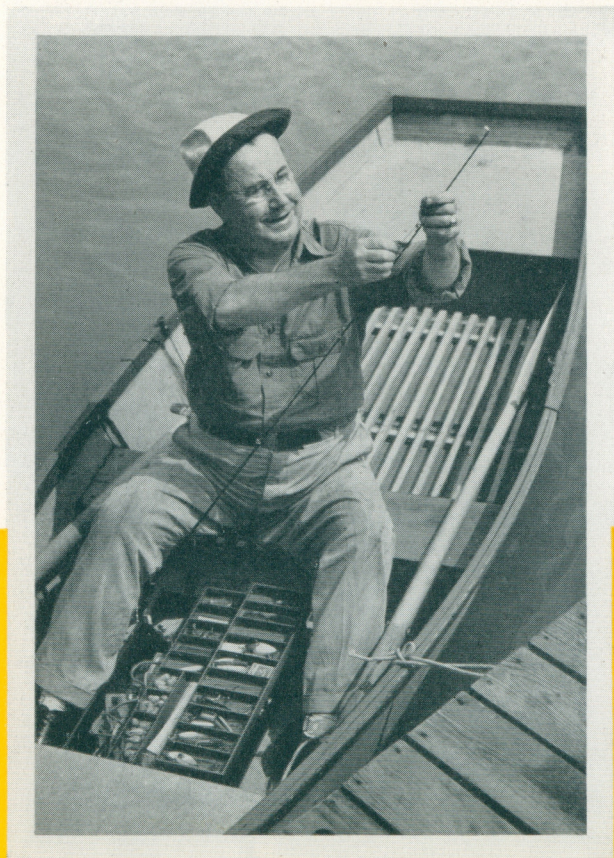
Printers and Publishers make illustrations.

Federal, State, and Municipal Government Men make photographic studies and analyses of many subjects.

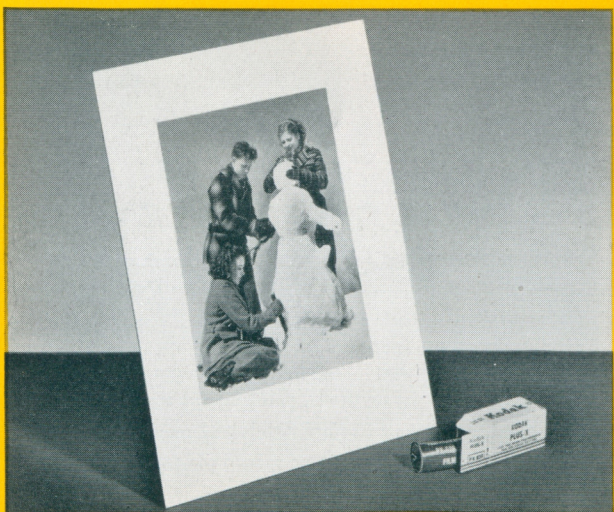
Real Estate Men obtain general views of property and photographs of special details.

KODAK BANTAM *f*/4.5 is made with care. It conforms to rigidly maintained high standards. It is thoroughly sound in construction, beautifully finished, and smooth in action.

The fact that Kodak Bantam *f*/4.5 uses 8-exposure Kodak Film has made it a favorite with many photographers who need or prefer a miniature camera but do not wish to make a total of 18 or 36 exposures before they can see the results.



★ By means of modern photofinishing methods, enlarged black-and-white prints, approximately 2¾ x 4 inches, can be made from Kodak Bantam *f*/4.5 negatives.



★ Enlargements of good quality for commercial or industrial use or for private enjoyment can be produced readily from Kodak Bantam *f*/4.5 negatives.

Main Points

About Kodak Bantam with Kodak Anastigmat Special *f*/4.5 Lens

1. Produces black-and-white negatives from which splendid enlargements can be made. Produces full-color Kodachrome transparencies for screen projection or from which Kodak Minicolor Prints can be made.

2. Loads with 8-exposure No. 828 Kodak Films—Kodak Super-XX, Kodak Plus-X, Kodak Panatomic-X, Kodak Panatomic, Kodak Infrared, Kodak Direct Positive, Kodachrome Daylight and Kodachrome Type A.

3. Negative size 28 x 40 mm.

4. Picture sizes

Standard enlarged print—black-and-white—2¾ x 4 inches.

Kodak Minicolor Prints—from Kodachrome transparencies—2X (2¼ x 3¼); 5X (5 x 7½); 8X (8 x 11).

5. Kodak Anastigmat Special *f*/4.5 lens, well color corrected.

6. Focusing range 2½ feet to infinity.

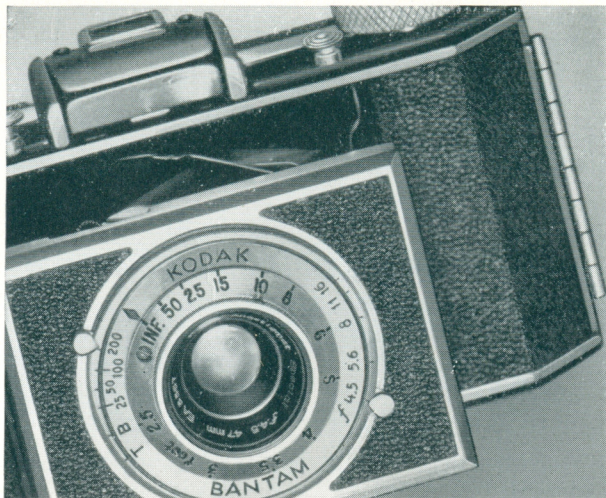
7. Kodak setting-type shutter with four speeds—1/25, 1/50, 1/100, and 1/200 second. Time exposure and "bulb" settings are provided also.

8. Automatic film centering. Safety catch prevents inadvertent winding of film.

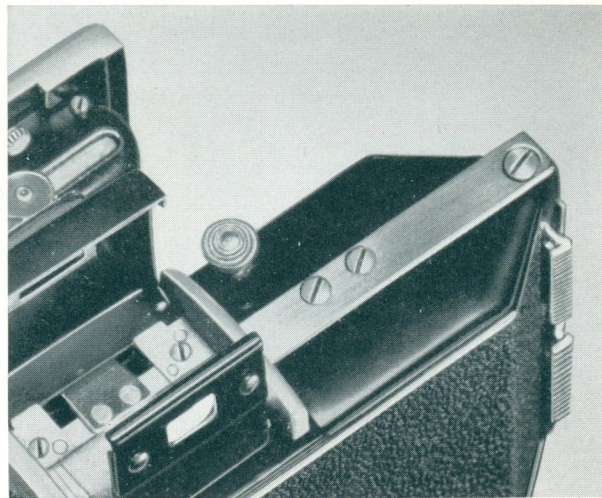
9. Plunger type body shutter release, smooth in action.



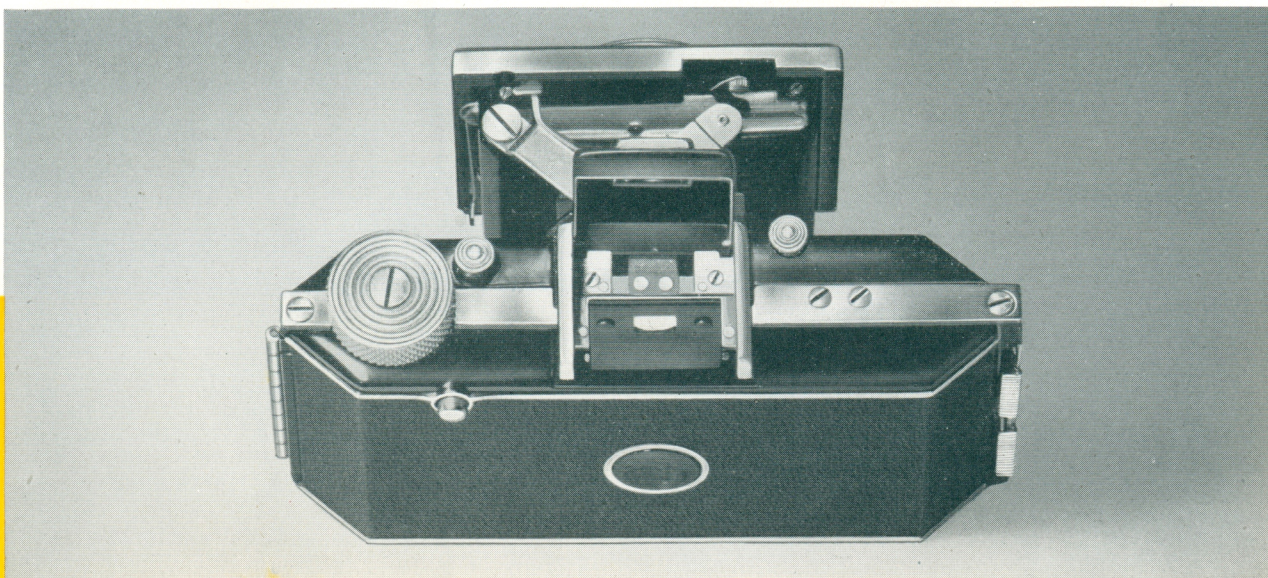
★ Kodak Minicolor Prints, beautiful full-color prints made from Kodachrome transparencies, are available in several sizes at reasonable prices.



★ Kodak Bantam f/4.5 is surprisingly compact yet it is so designed that it is easy to handle and convenient to use.



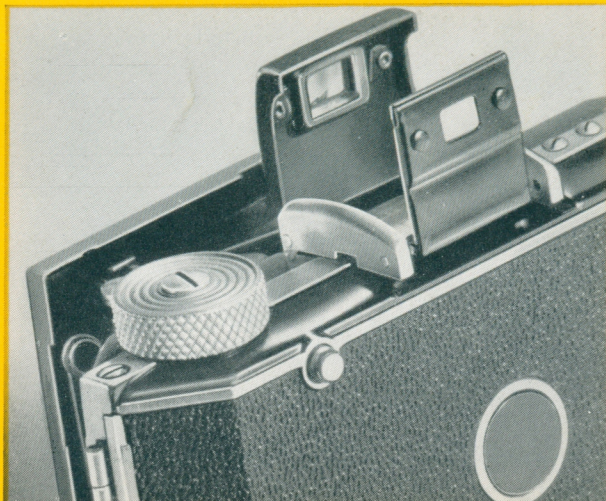
★ The lens and shutter of Kodak Bantam f/4.5 come swiftly to picture-taking position at the touch of a button.



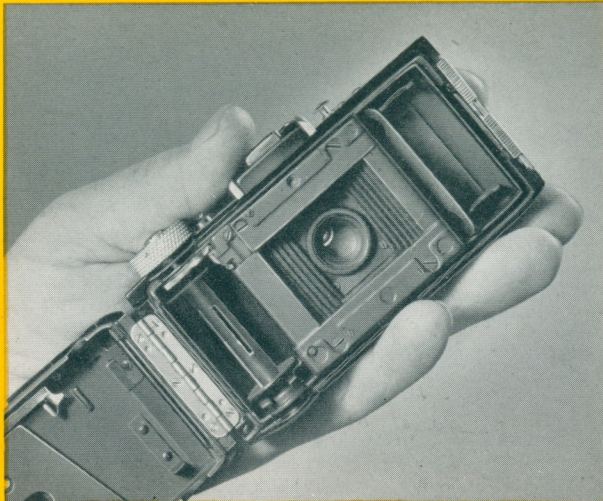
★ The body shutter release button conveniently located for the index finger of the right hand is an operating feature all users appreciate. Smooth in action, it helps get the picture when the scene is just right.



★ Kodak Bantam f/4.5 can be loaded with No. 828 Kodak Films—Super-XX, Plus-X, Panatomic-X, Panatomic, Infrared, Direct Positive, and Kodachrome Daylight or Type A.



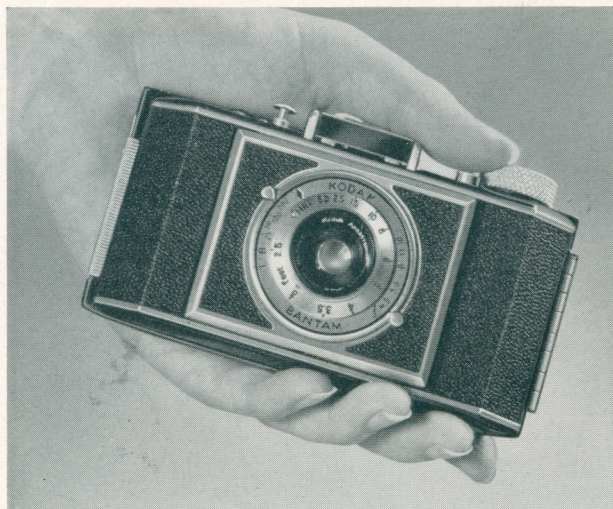
★ After an exposure has been made the button illustrated is pressed while the film winding knob is given a half turn. The button is then released and the winding knob locks after the next frame reaches position.



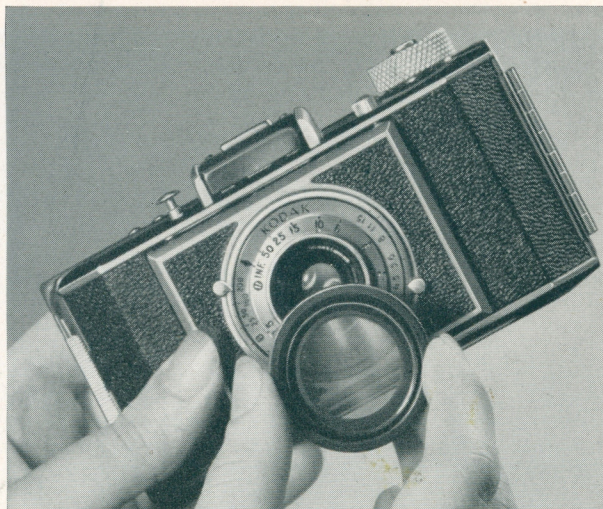
★ Kodak Bantam *f/4.5* has the strong and accurate internal construction so necessary if a miniature camera is to stand up under day-after-day use. Quick and easy loading with No. 828 Kodak Film is one of its features.

CAMERA DETAILS

1. Dimensions— $4\frac{1}{2} \times 2\frac{1}{8} \times 1\frac{1}{2}$ inches.
2. Weight—12 ounces.
3. Camera body and back—die-cast aluminum covered with black morocco-grain Kodadur. Metal sides finished in black enamel with quarter-inch bright metal stripe entirely around camera.
4. Self-erecting front comes into position instantly at a touch of the release button.
5. Folding optical eye-level finder.
6. Tripod socket located to hold camera in horizontal picture-taking position.
7. Accepts No. 30 Kodak Cable Release.
8. Kodak Junior Synchronizer can be used for synchronized Photoflash photography.
9. Smart leather Field Case with neck strap available for Kodak Bantam *f/4.5*.
10. Lens takes Series V Kodak Combination Lens Attachments and $\frac{1}{8}$ -inch Adapter Ring.



★ When Kodak Bantam *f/4.5* is closed its diminutive size is readily seen.



★ Kodak Combination Lens Attachments can be used when a Kodak Adapter Ring is added.