

# HOUGHTONS L I M I T E D



**The Largest Manufacturers of  
Cameras and Photographic  
Apparatus in the Kingdom**

**88/89 HIGH HOLBORN  
LONDON . . . . W.C.**

TELEGRAMS :  
"BROMIDE  
LONDON."

TELEPHONES :  
2500 HOLBORN  
(5 lines)

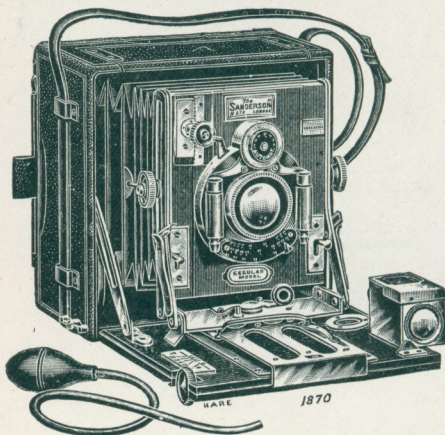
GLASGOW BRANCH :  
**70/78 YORK STREET, GLASGOW**

OPTICAL BRANCH :  
**95 HATTON GARDEN, E.C.**

FACTORIES (BUILDINGS COVER 2½ ACRES)  
**ENSIGN WORKS, WALTHAMSTOW**

# The "Sanderson" Hand Cameras.

The "Sanderson" still holds an unrivalled position as the most useful and valuable camera for all-round work. Combining as it does the manifest advantages of a field camera with the portability and "instantly ready" character of a hand camera, it is the ideal instrument for a skilled



worker. Its simplicity is unequalled. The universal swing front, the movement that has made the "Sanderson" famous, provides for the rising and swinging of the Lens Front in any direction, and yet allows the action to be entirely governed by a single pair of locking nuts. All the actions of the "Sanderson" are controlled from the back. The Lens swings on its axis and travels upwards, forwards or backwards on a pair of struts slotted in their full length. The action is always steady, smooth and regular, and there is no danger of the lens "dropping" and necessitating refocussing. The "Sanderson" movement is quite unique and is covered by a large number of patents. It must be understood however, that in the "Sanderson," all these movements are held in

reserve and need only be brought into action when wanted.

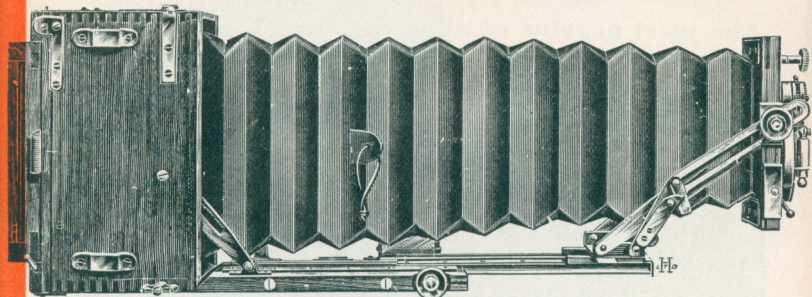
For ordinary snapshot work the front is merely drawn out to the infinity point, where it locks at the correct focus and the camera is instantly ready for snapshot use.

**Let us send you a 68-page booklet which describes the various hand cameras in the "Sanderson" series. This book is beautifully printed, is full of pictures and describes the cameras in detail.**

No.	DESCRIPTION.	4½ × 3½ in.	5 × 4 in.	6½ × 4½ in.
1	Camera, complete with "Beck" Convertible Double Aplanat Lens, f/7.7, 3-Foci, "Automat" Shutter, Brilliant Finder, Level, and 3 Double Plate Holders.	£ s. d. 6 10 0	£ s. d. 7 10 0	£ s. d. 10 10 0
1v	Ditto, ditto, with "Ensign" Anastigmat Lens, Series II., 3-Foci, f/7.7, ditto, ditto	7 5 0	8 5 0	11 10 0
1x	Ditto, ditto, with "Ensign" Anastigmat Lens, Series I., 3-Foci, f/5.8, ditto, ditto	7 17 6	9 5 0	12 12 6
1a	Ditto, with "Busch" Detective or Rapid Aplanat Lens. . . . .	7 12 6	8 17 6	11 17 6
3	Ditto, with "Dallmeyer" Stigmatic Lens, Series II., f/6 . . . . .	11 17 6	14 10 0	19 10 0
4	Ditto, with "Goerz" Dagor Double Anastigmat Lens, Series III., f/6.8 . .	10 17 6	12 17 6	17 7 6
4c	Ditto, with "Goerz" Syntor Double Anastigmat Lens, Series ID, f/6.8 . .	8 17 6	10 7 6	14 12 6
5	Ditto, with "Cooke" Lens, Series III, f/6.5	10 7 6	11 12 6	16 2 6
8c	Ditto, with "Zeiss" Protar Lens, Series IV., f/6.3 . . . . .	13 7 6	16 9 0	21 0 0
10	Ditto with "Aldis" Anastigmat Lens, Series II., f/6 . . . . .	7 7 6	9 17 6	14 7 6
9	Ditto, with "Ross" Homocentric Lens, Series III., f/6.3 . . . . .	9 17 6	11 7 6	16 0 0

**HOUGHTONS LTD. 88 HIGH HOLBORN. W.C.**

# The 'Tropical Sanderson' & other models



The "Tropical Sanderson" is a model specially built in polished teak without a leather covering. Intended for use in climates where great extremes in temperature are encountered, this model is strengthened and bound with brass in all its vital parts, and the bellows are attached with brass plates to the body of the camera. All the features of the Regular Model are to be found in the "Tropical Sanderson. The illustration shows the full extension possible with all models, invaluable for telephotography and for copying. Prices of "Tropical Sandersons" from £7 15s. (¼-plate) complete with Lens, Shutter, 3 Double Backs, Finder, Level, etc.

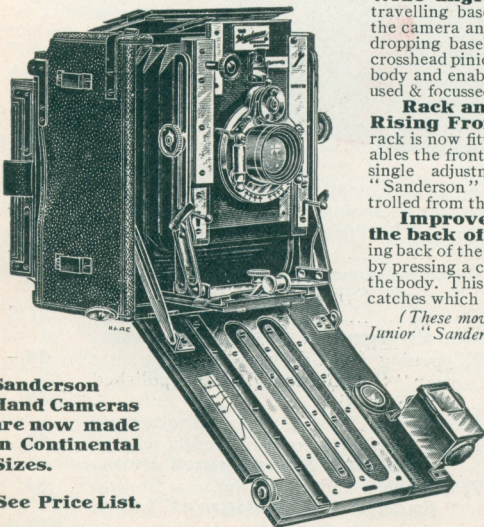
The very latest "Sandersons" are fitted with these new movements.

**New Back Focussing Rack for wide angle work.**—This is an extra travelling baseboard built into the body of the camera and entirely independent of the dropping baseboard. It is controlled by a crosshead pinion on the right hand side of the body and enables very short focus lenses to be used & focussed without the slightest trouble.

**Rack and Pinion Control to the Rising Front.**—A projecting pinion with rack is now fitted to the rising front and enables the front to be raised or lowered by a single adjustment. Like all the other "Sanderson" movements it is easily controlled from the back of the camera.

**Improved Method of attaching the back of the Camera.**—The reversing back of the "Sanderson" is now released by pressing a concealed spring on the top of the body. This spring actuates two automatic catches which hold the back in position.

(These movements are NOT fitted to the Junior "Sanderson" Hand Camera.)



Sanderson  
Hand Cameras  
are now made  
in Continental  
Sizes.

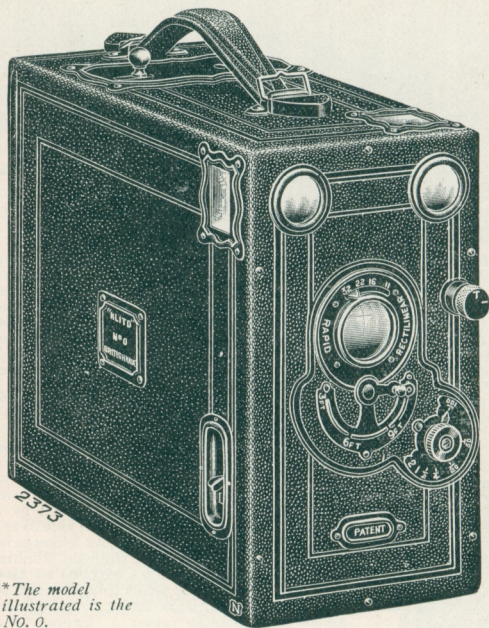
See Price List.

**Postcard 'Sanderson'**  
for taking pictures  
5½ × 3½ .. £8 2 6  
'Junior Sanderson' a  
popular price model  
(3 sizes) ¼-pl. .. £5 5 0  
**De Luxe Model, High-  
est possible quality  
and workmanship (all  
sizes) ¼-pl. .. £10 0 0**

HOUGHTONS LTD. 88 89 HIGH HOLBORN, W.C.

# The "Klito."

The most popular of all magazine plate Cameras.



\*The model illustrated is the No. 0.

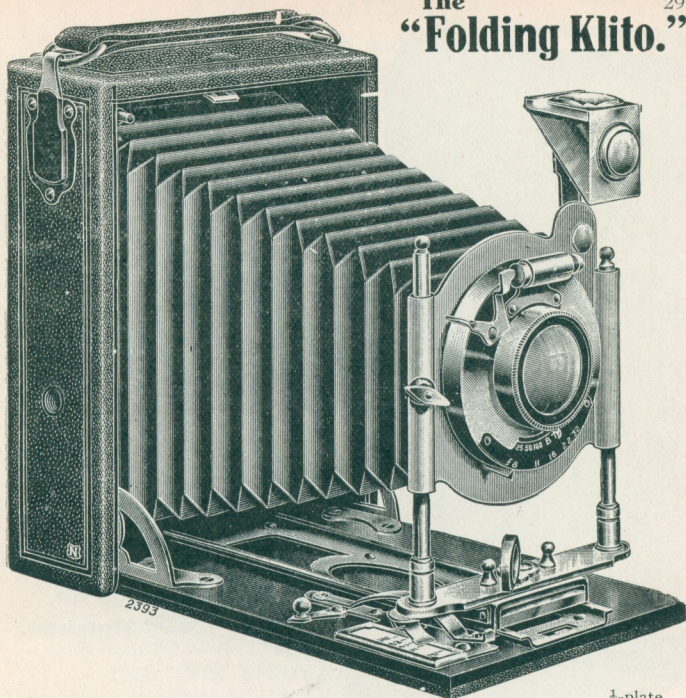
The "Klito" Camera is the most popular Box-form Magazine Hand Camera in the world. Tens of thousands have been sold, and the demand is as big as ever. Each Camera will hold twelve  $\frac{1}{4}$ -plates, and possesses a "Klito" Shutter with speeds from two seconds to the hundredth part of a second. There are two finders, and all are rack focussing models except Nos. "I," "0," and "00." No hand Camera at anything like the price offers such extraordinary value for the money. Ask for particulars of "Klito" Cameras, fitted with high grade anastigmat lenses.

" Klito " No. 1 with Rapid Achromatic Lens, Safety Shutter, and three magnifiers for focussing ... ..	21/-
*" Klito " No. 0 with Rapid Rectilinear Lens, Iris Diaphragm, Focussing Magnifiers ... ..	21/-
" Klito " No. 1A, with Rapid Achromatic Lens, Rack Focussing	25/-
" Klito " No. 2A, with " Ensign " Symmetrical Lens $f/8$ , Safety Shutter, Rack Focussing ... ..	31/6
" Klito " No. 2V, with <b>" Ensign " Anastigmat Lens, Series II. <math>f7\cdot7</math></b> , opening front door, Rack Focussing	63/-
" Klito " No. 3, with " Ensign " Symmetrical $f/8$ Lens, polished Mahogany Front, Rack Focussing ... ..	42/-
" Klito " No. 6, with Bausch and Lomb Automat Shutter and " Beck " Rapid Symmetrical $f/8$ Lens, Horizontal pattern	63/-
" Klito " No. 6V, with <b>" Ensign " Anastigmat Lens, Series II. <math>f7\cdot7</math></b> , in Bausch and Lomb Automat Shutter	84/-
" Klito " No. 6X, with <b>" Ensign " Anastigmat Lens, Series I, <math>f5\cdot8</math></b> , in Koilos Shutter ... ..	117/6

**HOUGHTONS LTD.** 88  
89 HIGH HOLBORN.W.C.

# The "Folding Klito."

291



$\frac{1}{4}$ -plate.

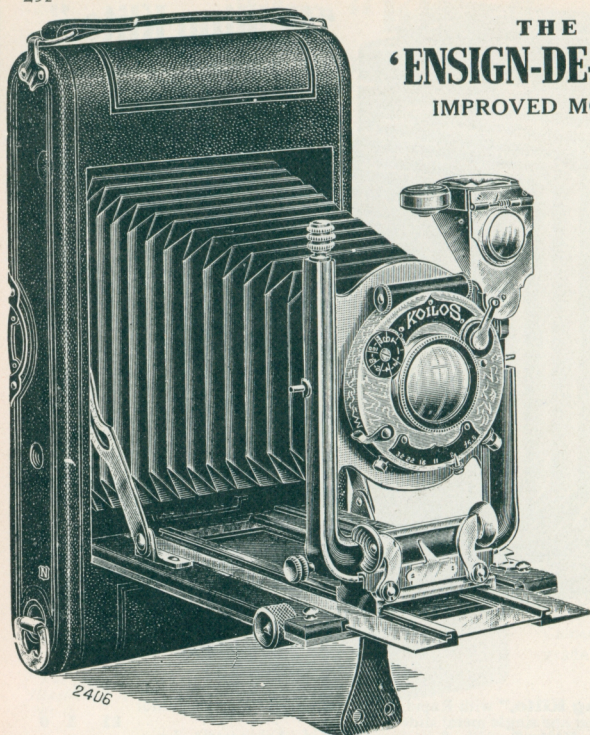
<b>No. 000 "Folding Klito,"</b> with Rapid Achromatic Lens Ensign Junior Auto Shutter and one single metal slide ..	£1 1 0
<b>No. 0 "Folding Klito,"</b> with Symplanat Rapid Achromatic Lens, "Simplex Auto" Shutter and two single metal slides ..	1 5 0
<b>No. 1 "Folding Klito,"</b> with "Symplanat" Rapid Achromatic Lens, "Simplex Auto" Shutter and two single metal slides ..	1 10 0
<b>No. 00 "Folding Klito,"</b> with Rectimat Symmetrical Lens <i>f</i> /8 and Simplex Auto Shutter, two single metal slides ..	1 10 0
<b>No. 2 "Folding Klito,"</b> with "Ensign" Symmetrical Lens, <i>f</i> /8, "Simplex Auto" Shutter and two single metal slides ..	1 17 6
<b>No. 3 "Folding Klito,"</b> with "Beck" Symmetrical Lens, <i>f</i> /8 and "Simplex Auto" Shutter and two single metal slides ..	2 10 0
<b>No. 3v "Folding Klito,"</b> with "Ensign" Anastigmat Lens, Series II, <i>f</i> /7.7, in "Simplex Auto" Shutter, two single metal slides ..	3 10 0
<b>No. 4v "Folding Klito,"</b> with "Ensign" Anastigmat Lens, Series II, <i>f</i> /7.7, in Bausch and Lomb "Automat" Shutter, two single metal slides ..	4 0 0
<b>No. 7 "Folding Klito,"</b> with "Ensign" Symmetrical Lens, <i>f</i> /8. and two single metal slides ..	3 3 0
<b>No. 7v "Folding Klito,"</b> with "Ensign" Anastigmat Lens, Series II., No. 0, <i>f</i> /7.7, and "Automat" Shutter ..	4 12 6
<b>No. 7x Ditto,</b> with "Ensign" Anastigmat Lens, Series I., No. 0, <i>f</i> /5.8., and "Automat" Shutter ..	5 10 0
Extra for "Koilos" Shutter for any model in place of "Automat" ..	0 15 0
Extra Single Metal Slides .. each ..	0 1 6
<b>Houghton Envelope Adapter</b> for plates and films ..	0 15 0

**HOUGHTONS LTD.** 89 HIGH HOLBORN, W.C.

THE  
**'ENSIGN-DE-LUXE'**  
 IMPROVED MODEL.

A Pocket  
 Roll Film  
 Camera  
 for the  
 Expert.

Perfectly  
 Made  
 and  
 Finished.



**Folding Pocket Camera**, strongly constructed and covered in best quality Morocco Grained Leather, best black Leather Bellows, Rising and Cross Front by screw adjustment **Double Extension by Rack and Pinion**, **Bausch & Lomb "Automat" Shutter**, adjustable from 1 sec. to 1/100th sec., and for prolonged Time Exposures, Reversible Finder, Level and Infinity Catch.

No. II.	Complete for Roll Films with "Beck" Symmetrical Lens f/8	For Plates or Roll Films	
		4½ × 3½	5½ × 3½
		£ s. d.	£ s. d.
.. IIC.	Ditto, with "Busch" Symmetrical Lens f/8 ..	5 5 0	6 5 0
.. IIV.	Ditto, with "Ensign" Anastigmat Lens f/7.7 ..	6 5 0	7 7 6
.. IIX.	Ditto, with "Ensign" Anastigmat Lens f/5.8 ..	7 2 6	8 12 6
.. I3a.	Ditto, with "Aldis" Anastigmat Lens, f/6 ..	6 7 6	7 17 6
.. I4a.	Ditto, with "Goerz Syntor" Anastigmat Lens f/6.8 ..	8 2 6	9 12 6
.. I6.	Ditto, with "Goerz Dagor" Anastigmat Lens f/6.8 ..	10 2 6	12 2 6
Extra for	"Ensign Sector" Automatic Shutter, with Antinous Release, in place of Bausch and Lomb "Automat" Shutter ..	0 5 0	0 5 0
Extra for	"Koillos" Shutter in place of "Automat" ..	0 15 0	0 15 0
Focussing Screen	complete with 3 Slides, in Case ..	0 10 0	0 12 6

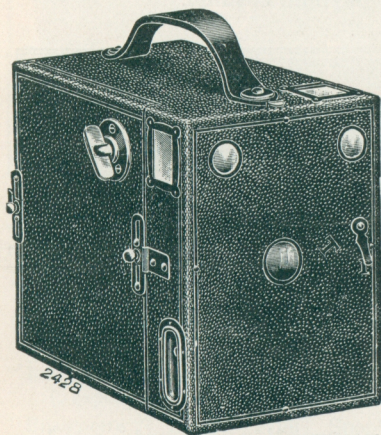
This Camera takes "Ensign" Roll Films. Quarter-plate Model "3¼ in. Post Card Model "3¼ in. A."

**HOUGHTONS LTD.** 88 HIGH HOLBORN. W.C.

# The "Ensign."

## BOX FORM MODELS.

An entirely new series of British-made Box Form Cameras for Daylight Loading Roll Films.



2½B "ENSIGN."

These Cameras are beautifully made, and are built entirely of well-seasoned wood and metal. They are novel in construction, and exceedingly easy to load, the whole of the spool winding mechanism being withdrawn from the outer case, with the side of the Camera, thus greatly facilitating this operation. The strength and solidity of these Cameras is greatly superior to that of other Cameras of similar type.

The covering is of water-proof cloth of excellent quality, practically indistinguishable from leather. The spool winding key is nickelled and all the other fittings are of solid oxydised metal.

A fine quality Achromatic Meniscus Lens is fitted. The Shutter is Everset, and gives Time and Instantaneous Exposures. Ground Glass View Finders of rectangular form and built into the body of the Cameras are provided, and each Camera (except the 2¼ A. Model) is fitted with a leather carrying handle.

### THE "2¼A ENSIGN." (For Pictures 2¼ × 2¼.)

Complete with Single Achromatic Lens, Everset Time, and Instantaneous Shutter and View Finder ... ..

5/-

### THE "2¼B ENSIGN." (For Pictures 3¼ × 2¼.)

Complete with Single Achromatic Lens, Everset Time and Instantaneous Shutter, with Catch for holding Shutter open for prolonged Time Exposures, two View Finders for upright and oblong pictures, and Diaphragms f/11, f/16, f/22, f/32 ... ..

10/-

### THE "2½ ENSIGN." (For Pictures 4¼ × 2½.)

Takes pictures as long, but not quite as wide as a quarter-plate. A singularly effective and useful size. Complete with Single Achromatic Lens, Everset Time and Instantaneous Shutter, with Catch for holding Shutter open for prolonged Time Exposures, two View Finders for upright and oblong pictures and Diaphragms, f/11, f/16, f/22, f/32

12/6

### THE "3½ ENSIGN." (For Pictures 3½ × 3½.)

Takes a very useful Square Picture. Camera similar in equipment to the "2½ Ensign." ... ..

21/-

### THE "3¼ ENSIGN." (For Pictures 3¼ × 4¼.)

The popular quarter plate size. Complete, as above ... ..

25/-

**HOUGHTONS LTD. 88 89 HIGH HOLBORN. W.C.**

# The "Ensignette."

(Patent.)

## A FOLDING CAMERA FOR THE UPPER VEST POCKET.

**Self-Contained. Daylight Loading.**

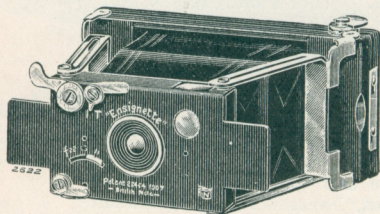
The "Ensignette" is a Vest Pocket Camera built on a new plan. It is new in size, shape and construction. The "Ensignette" is built of metal throughout, opens smoothly and instantly, and is the ideal camera for constant use.

Attractive little pictures are produced that do not necessarily need enlarging to be interesting.



*The exact size of the picture taken by the "Ensignette,"  $2\frac{1}{4} \times 1\frac{1}{2}$  in.*

When closed the "Ensignette" measures  $3\frac{7}{8} \times 1\frac{7}{8}$  in. and is only  $\frac{3}{4}$  in. in thickness. It opens and locks in position for exposure by one simple movement. It is the only really small Folding Camera that is self-contained, and will go into the waistcoat pocket, and it is thinner than any camera in existence.



The "Ensignette" is loaded and unloaded in daylight with Special six-exposure "Ensign" Roll Films.

The "Ensignette" fixed focus printing box will automatically enlarge the pictures to the full standard size postcard ( $5\frac{1}{2} \times 3\frac{1}{2}$ ) without loss of

definition. It means that you can produce full size postcard pictures with a Camera that slips into your vest pocket.

The "Ensignette" is fitted with an Achromatic Meniscus Lens with Adjustable Diaphragm openings,  $f/11$ ,  $f/16$ , and  $f/22$ . It has an Everset Instantaneous Shutter, with a large and easily controlled release lever.

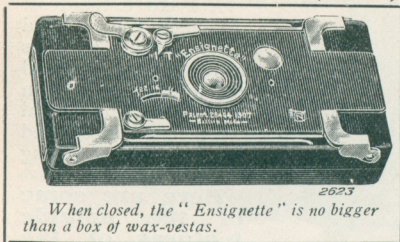
Time Exposures can also be given, and the Camera will stand easily on a level surface for either oblong or upright pictures.

**HOUGHTONS LTD. 88 89 HIGH HOLBORN, W.C.**



# "The Ensignette."

(Patent.)



When closed, the "Ensignette" is no bigger than a box of wax-vestas.

There is a self-contained brilliant View Finder, a winding key for changing the Film, and an Indicator Window.

The system of Film changing is particularly simple, and can be mastered in a moment.

The "Ensignette" is sold in a limp Leather Pocket Case which keeps the Camera clean and free from dust, and takes up little or no room.

The "Ensignette" has a very handsome appearance, the extending struts are of nickelled phosphor bronze and all the bright parts are of the same finish.

No. 1. "Ensignette" Camera, complete with <b>Achromatic Menicus Lens</b> ... ..	<b>30/-</b>
„ 1x. "Ensignette" Camera, complete with <b>"Ensign Anastigmat Lens 1/5.6</b> ... ..	<b>70/-</b>

"Ensignette" Ensign Film Spool  
(6 exposures) ... .. each **10d.**

"Ensignette" Ensign Film Spool  
(6 exposures) ... .. per box of 3 **2/6**

"Ensignette" Printing Box. To enlarge  
"Ensignette" pictures by daylight to  
Postcard Size ... .. **5/6**

"Ensignette" Printing Frame (for 2  
contact pictures) ... .. **6d.**

Developing and Printing Outfit. Complete  
with Book of Instructions. (For  
Developing Spools and making  
Contact Prints actual size) ... .. **5/6**

Printing Box Outfit. Complete with Book  
of Instructions (For Developing and  
Printing Enlarged Prints) ... .. **3/-**

"Ensignette" Daylight Developing Tank **7/6**

Spools of "Ensignette" Film can be developed,  
and Contact Prints made actual size, or Prints  
enlarged on to Postcards at the following prices :-

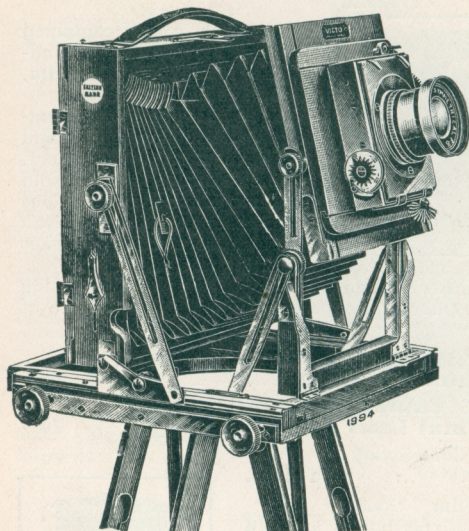
Developing Films ... ..	per strip of 6 exposures	<b>6d.</b>
Contact Prints ... ..	per strip of 6 exposures	<b>6d.</b>
„ „ from separate negatives ... ..	per doz	<b>1/6</b>
Enlarged Prints on Postcards ... ..	per doz.	<b>3/6</b>



The Special Six-Exposure "Ensign" Spool for the "Ensignette."

**HOUGHTONS LTD. 88-89 HIGH HOLBORN, W.C.**

# The "Victo" Camera Set.



A Field Camera set in which rigidity and serviceable qualities have not been sacrificed for appearance. An outfit for the practical worker and recognised as a standard among Field Cameras.

**Here are some of the notable features of the "Victo."** The Back Framework automatically locks at right angles to the baseboard. A double action similarly locks the lens front as soon as it is at right angles to the baseboard. The camera is therefore very easy to set up. Double swing action by which the lens can be swung upwards or

downwards as desired, and fixed in any position. The Lens Board has rising, falling and side movements. Each movement can be locked separately. The lens can be raised  $2\frac{3}{8}$  inches. The "Victo" has a triple extension governed by Two Separate Pinions, the total extension in the half-plate size being  $21\frac{1}{2}$  inches.

Wide front, real leather bellows fixed to the camera front with a metal plate. Focussing screen is fitted with springs for keeping it in position instead of angle catches. Large pinion heads, locking clamp on turntable and many other points of utility.

**Every "Victo" set includes a Camera, a named Lens, Thornton-Pickard Roller Blind Shutter, a Double Dark Slide and Tripod Stand.**

Prices from 70/- See Price List.

No.	DESCRIPTION.	$\frac{1}{2}$ -plate.	$\frac{1}{4}$ -plate.
		£ s. d.	£ s. d.
<b>1</b>	"Triple-Victo" Set complete with "Ensign" Symmetrical Lens $f/8$ , and "Thornton-Pickard" Shutter, etc . . . . .	<b>3 10 0</b>	<b>5 10 0</b>
<b>1a</b>	Ditto, complete with "Ensign" Aplanat Lens, $f/7.7$	<b>3 15 0</b>	<b>5 17 6</b>
<b>2</b>	Ditto "Busch" Rapid Symmetrical Lens, $f/8$ . . . . .	<b>3 17 6</b>	<b>6 0 0</b>
<b>3</b>	Ditto, "Beck" Rapid Symmetrical Lens, $f/8$ . . . . .	<b>3 15 0</b>	<b>5 17 6</b>
<b>1v</b>	Ditto ditto, with "Ensign" Anastigmat, Series II. (3 foci.) $f/7.7$ . . . . .	<b>5 10 0</b>	<b>8 2 6</b>
<b>1x</b>	Ditto, ditto, with "Ensign" Anastigmat, Series I. (3 foci.) $f/5.8$ . . . . .	<b>6 12 6</b>	—
	Extra Double Slides . . . . .	<b>0 8 6</b>	<b>0 14 6</b>

Teak "Victo" made in all sizes for Tropical use. Post-card and  $5 \times 4$  models in mahogany or teak. Continental sizes in Mahogany.

**HOUGHTONS LTD. 88 HIGH HOLBORN. W.C.**

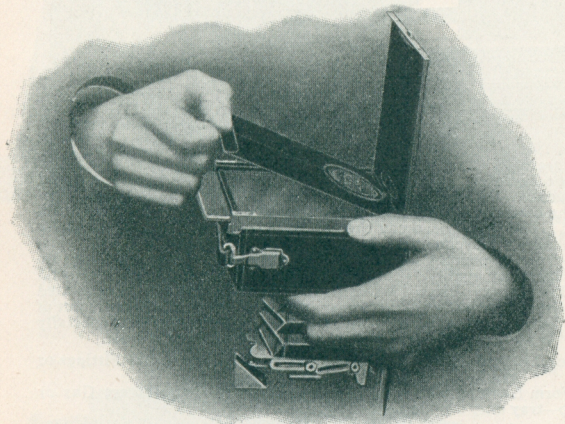
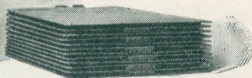
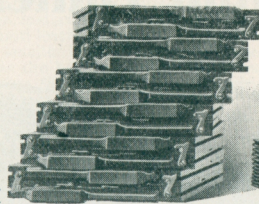
# The "Houghton" Envelope System.

**A perfect Daylight Loading System for Plates & Films.**

The Houghton Envelope System provides a means of loading the camera in daylight with either Flat Films or Plates and entirely dispenses with the use of ordinary dark slides.

The Film or Plate is contained in an ingenious but exceedingly simple light proof envelope made of stiff black paper. As this envelope only consists of four thicknesses of paper the added weight and bulk is practically negligible. To the user of glass plates the advantages of the Houghton Envelope System will at once be manifest. Its safety and certainty of action has commended it to the serious worker who aspires to get a perfect result from every exposure. Each exposure can be separately focussed if necessary.

*This Photograph shows the difference in bulk between 12 glass plates as carried in double dark slides and 12 glass plates in HOUGHTON ENVELOPES.*



The "Houghton" Envelope Adapter, Models "B" and "C", have a focussing screen built into them in such a way as to dispense with the ordinary focussing screen, attached to the back of a camera, altogether. The Adapter thus not only supersedes Dark Slides, but renders a separate focussing screen unnecessary also. The Adapter is never removed from the camera either for focussing or for re-loading.

**Prices complete with self-contained Focussing Screen**

**Model "B"**—Ebonyised wood, leather-covered, for all Cameras using wooden Dark Slides, including "Sandersons" and "Tudors."

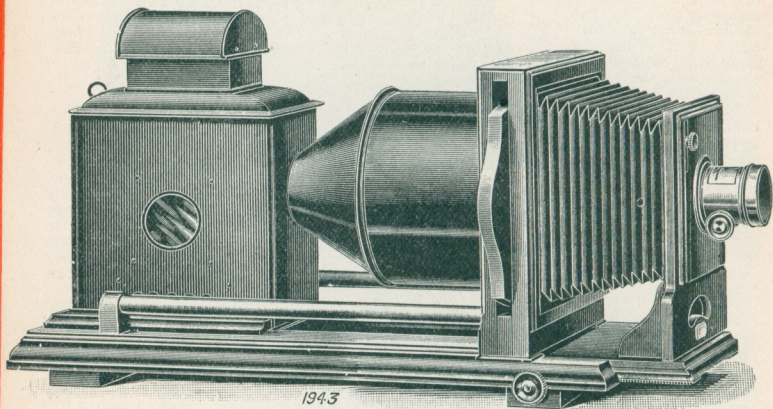
**Model "C"**—Metal, leather-covered, for all "Folding Klitos," "Ariels" ( $\frac{1}{4}$ -pl.), and Roll Film "Ensigns" ( $\frac{1}{4}$ -pl.)

Size.	Model "B" Each.	Model "C" Each.	Plate Envelopes New Model (Unloaded). Per Dozen.	Film Envelopes Loaded with "Ensign" Flat Cut Film (Thick) Packets of 10.	"Ensign" Flat Cut Films (Thick), for Reloading. Packets of 10.
$\frac{1}{4}$ -plate	15 0	15 0	3/6	3/0	1/8
5 x 4	18 6	—	4 6	4/6	2/6
Post Card	18 6	—	4 6	5/6	2 6
$\frac{1}{2}$ -plate	25/0	—	6/0	6 0	3 9
9 x 12 c/m	16 6	16 6	4/0	5/0	2 3

Illustrated Booklet on the "Houghton" Envelope System free on application.

**HOUGHTONS LTD. 88-89 HIGH HOLBORN, W.C.**

# The "Tudor" Enlarging Lantern.



The "Tudor" Enlarging Lantern is scientifically constructed and capable of turning out work of the highest technical excellence. The baseboard is of solid mahogany, and extends by rack and pinion. The pinion head in its normal position is thrown out of gear, and this allows the baseboard to be easily moved backwards and forwards to obtain the correct adjustment. The pinion head can then be pulled out, and the final focussing done with the rack and pinion movement.

The body, chimney and condenser hood are of Russian iron. The condenser in a solid brass mount is of excellent quality. Lens front and condenser carrier are of solid polished mahogany. The negative carrier is shaped so that the picture can be regulated to the best advantage, the curved base making it possible to correct lines that are out of the perpendicular. A rising front lens panel is fitted, and the portrait lens is of specially selected quality, with "Waterhouse" diaphragms and rack focussing adjustment.

**Model A.** Small Body Lantern with Tall Chimney, with Incandescent Gas Fittings or Oil Lamp.

**Model B.** Square Form Lantern with Cowl (as illustrated) for Incandescent Gas or Electric Arc Lamp—tray only supplied.

No. 1. Quarter-plate, complete with 5½-in. Condenser and best quality Portrait Lens .. .. .	£4 0 0
Extra for Aldis Lens Series II. No. 2 instead of Portrait Lens .. .. .	0 15 0
No. 2. 5 × 4 or Post-card size, complete with 6½-in. condenser, and best quality Portrait Lens .. .. .	5 0 0
Extra for Aldis Lens Series II. No. 3 instead of Portrait Lens .. .. .	1 10 0
No. 3. Half-plate, complete with 8¼-in. Condenser and best quality Portrait Lens .. .. .	7 0 0
Extra for Aldis Lens Series II. No. 4 instead of Portrait Lens .. .. .	2 2 6
Extra for Sol Lamp .. .. .	1 8 0
Extra for Incandescent Burner and Reflector .. .. .	0 6 9

**SPECIAL NOTE.**—Please always state which Model, A or B, Lantern is required, and whether for Gas, Oil or Electric Light.

"Combination" Enlarging Lantern for ¼-plate cameras .. .. .	£2 0 0
"Queen" Enlarging Lantern, with 5½-inch condenser .. .. .	2 17 6
"Victo" Enlarging Lantern with 5½-inch condenser .. .. .	3 7 6
"Sanderson" Enlarging Lantern for ¼-plate "Sandersons" .. .. .	2 10 0
"Imperial" Enlarging Lantern for ¼-plate negatives .. .. .	5 15 0
"Empress" Enlarging Lantern for ¼-plate negatives .. .. .	2 12 6

**HOUGHTONS LTD. 88  
89 HIGH HOLBORN, W.C.**

# The "Klito" Daylight Enlarger.

The "Klito" Enlarger is made entirely of wood, and can be taken to pieces as shown in the illustration, and packed so that it takes up only half the space.

The covering is a hard leather grain material, and there is a leather handle for carrying. When set up the smaller end locks on to the base by means of two metal catches. There is a dark slide for the bromide paper, and it should be stated that this dark slide can be entirely withdrawn, so that there is no necessity to take the whole Enlarger into the dark room when the picture is to be developed. The panel of the dark slide folds back out of the way when the exposure is being made. There is a plunge shutter which shows when the lens is open or closed.

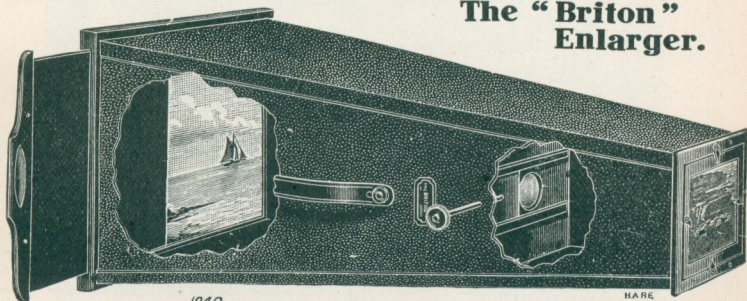
The Lens supplied is a Doublet of excellent definition, with exception of Nos. 5a and 6, which are fitted with single achromatic Lenses of special quality.



## Prices of the "Klito" Enlargers complete with Wooden Dark Slides.

No. 2	"Klito" Enlarger, $\frac{1}{4}$ -plate to whole-plate, and $3\frac{1}{2} \times 2\frac{1}{2}$ to $\frac{1}{2}$ -plate ..	15/-
No. 3	"Klito" Enlarger, $5 \times 4$ to $10 \times 8$ , and $\frac{1}{4}$ -plate to whole plate ..	21/-
No. 4	"Klito" Enlarger, $\frac{1}{4}$ -plate to $12 \times 10$ , and $3\frac{1}{2} \times 2\frac{1}{2}$ to $8\frac{1}{2} \times 6\frac{1}{2}$ ..	25/-
No. 5	"Klito" Enlarger, $5 \times 4$ to $12 \times 10$ , and $\frac{1}{4}$ -plate to $10 \times 8$ ..	30/-
No. 5a	"Klito" Enlarger, Post-card size to $12 \times 8$ ..	32/6
No. 6	"Klito" Enlarger, $\frac{1}{2}$ -plate to $15 \times 12$ , and $5 \times 4$ to $12 \times 10$ , and $\frac{1}{4}$ -plate to $10 \times 8$ ..	37/6

## The "Briton" Enlarger.



Built entirely of wood. Separate wooden dark slide with draw out shutter.		
No. 2	Briton Daylight Enlarger ( $\frac{1}{4}$ -plate to whole-plate, and $3\frac{1}{4} \times 2\frac{1}{2}$ to $\frac{1}{2}$ -plate) ..	8/6
No. 4	Briton Daylight Enlarger ( $\frac{1}{4}$ -plate to $12 \times 10$ , and $3\frac{1}{2} \times 2\frac{1}{2}$ to whole-plate) ..	15/-
No. 5a	Briton Daylight Enlarger ( $5\frac{1}{2} \times 3\frac{1}{2}$ to $12 \times 8$ ) ..	21/-

**HOUGHTONS LTD. 88 89 HIGH HOLBORN, W.C.**

AN ENTIRELY NEW KIND OF PAPER WHICH CAN BE DEVELOPED IN SUBDUED DAYLIGHT OR ORDINARY ARTIFICIAL LIGHT, AND YET GIVES RESULTS LIKE P.O.P.

## “Ensyna.”

“Ensyna” is a new paper that will give prints like P.O.P. by artificial light. It requires no toning and no troublesome manipulation. A long range of beautiful tones are obtainable—from rich purple to warm sepia. The tone is entirely controlled by the exposure. No process could be simpler. Prints can be made by daylight or artificial light. No dark room or yellow light is required. The whole process—printing, developing, **fixing**, and **washing**—takes only 5 minutes.

Printing takes about 1 to 5 seconds by daylight, or 20 to 60 seconds by gaslight. The prints develop up in less than 2 minutes in beautifully rich tones, giving results that are indistinguishable from the finest gold or platinum toned prints.

Prints only require 30 seconds to fix, and 2 minutes washing is all that is necessary before prints are hung up to dry.

It is practically impossible for anyone to go wrong with “Ensyna” printing. No flashing up of the image in the developer. The picture builds up gradually and definitely and loses nothing in the fixing bath.

OPEN ONLY IN SUBDUED LIGHT

# “Ensyna”

PATENT

An absolutely new kind of paper for printing by Gaslight or Daylight Gives results indistinguishable from the finest gold-toned P.O.P.

THE WHOLE PROCESS. PRINTING DEVELOPING, FIXING & WASHING TAKES ONLY 5 MINUTES & GIVES PERMANENT PRINTS.

Sold in 6d & 1/- packets

“Ensyna” can only be developed with Ensynoids. Other developers are useless. Directions enclosed

**HOUGHTONS LTD., LONDON & GLASGOW**

BRITISH PATENTS NO. 9693, OF 1908. 9655, OF 1907. ALSO PATENTED IN MOST OTHER COUNTRIES.

“**ENSYNA**” is made with either glossy, Carbon, or matt surface.

“**ENSYNA**” paper is sold in **6d.** and **1s.** packets in all the popular sizes.

“**ENSYNA**” postcards are put up in **6d.** and **1s.** packets and also in packets of 100 and 144.

“**ENSYNA**” paper in cut sizes is put up in gross boxes for professional use, and in sheets  $24\frac{1}{2} \times 17$ .

“**ENSYNA**” is developed with a special patented developer called “Ensynoids.” “Ensynoids” developer is sold as follows (it is essential for developing “Ensyna” paper).

“**ENSYNOIDS**” in Tubes—12 pairs of “Ensynoids,” each pair making 8 ozs. of developer. . . . **1s. 6d.**

In Cachets—a pair of “Ensynoids” making 8 ozs. of developer . . . **2d.**  
Boxes of 6 pairs of “Ensynoids”’ **1s.**

“**ENSYNOID**” Liquid Developer (one solution), sufficient to make 24 ozs. developer, per bottle. . . **6d.**

“**ENSYNA**” Acid Fixing (speci- ally recommended). In tins—to make 60 ozs. of acid Fixing solution . . . . . **3d.**

**HOUGHTONS LTD. 88 89 HIGH HOLBORN, W.C.**

# "Ensyna."

There are two grades of "Ensyna" (Ordinary and Vigorous) both equally suitable for printing from good average negatives, either by daylight or artificial light.

The **Ordinary (or Soft) Grades** are specially suitable for printing from strong and plucky negatives and are the best for Artificial light printing.

The **Vigorous Grades** are specially suitable for printing from thin and weak negatives, and are the best for Day-light Printing.

**BOTH GRADES ARE MADE WITH GLOSSY, MATT, AND CARBON SURFACES.**

SIZE OF PAPER.	PRICES.	SIZE OF PAPER:	PRICES.
$21\frac{5}{8} \times 13\frac{1}{2}$ .. ..	36 pieces for 6d.	5 × 4 .. ..	16 pieces for 1/-
$21\frac{1}{2} \times 21\frac{1}{2}$ .. ..	24 " 6d.	$5\frac{1}{2} \times 3\frac{1}{2}$ .. ..	16 " 1/-
5 × 1 $\frac{7}{8}$ Dble. Ensignette	20 " 6d.	6 × 4 $\frac{1}{2}$ .. ..	14 " 1/-
$3\frac{1}{2} \times 2\frac{1}{2}$ .. ..	18 " 6d.	$6\frac{1}{2} \times 4\frac{1}{2}$ .. ..	10 " 1/-
$3\frac{1}{2} \times 3\frac{1}{2}$ .. ..	12 " 6d.	$8\frac{1}{2} \times 6\frac{1}{2}$ .. ..	6 " 1/-
$4\frac{1}{4} \times 2\frac{1}{2}$ .. ..	16 " 6d.	10 × 8 .. ..	6 " 1/6
$4\frac{1}{4} \times 3\frac{1}{4}$ .. ..	10 " 6d.	12 × 10 .. ..	4 " 1/6
$4\frac{1}{4} \times 3\frac{1}{4}$ .. ..	22 " 1/-	15 × 12 .. ..	4 " 2/3

## What some Photographic Experts think of "Ensyna."

**The Editor of "Photography,"** says—" 'Ensyna' might be regarded as the feature of 1908. Certainly it is hard to forecast the position which this wonderfully simple and fool-proof paper may attain."

**The Editor of the "Amateur Photographer,"** says—"The most difficult to please can hardly want a paper that will do more."

**The Editor of the "British Journal of Photography,"** describes "Ensyna" as a "remarkable addition to photographic printing processes," and says that " 'Ensyna' is a product totally different from any other on the market."

"The whole process is novel, convenient, and highly efficient."—*The Daily Graphic*

"Unquestionably a new power is placed in the hands of the photographer by the 'Ensyna' Paper. . . . May work almost as wide spread revolution as did the coming of the Gelatine printing papers a few years ago."—*The Westminster Gazette*.

" 'Ensyna,' the new process that is upsetting all one's preconceived notions of photographic procedure."—**Mr. FOSTER BRIGHAM** in *The Amateur Photographer*.

"We are quite convinced that its introduction will mark one of the historic events in connection with photography."—*The Photographic Monthly*.

"The 'Ensyna' print over exposed 700 times will usually, or frequently, develop quite satisfactorily, especially if the developer is somewhat weakened by dilution with water."—**Mr. THOMAS BOLAS, F.C.S., F.I.C., etc., etc.,** in *The A.P. and P.N.*

" 'Ensyna' will probably revolutionise photography. . . . enormous possibilities lie in the invention. We rejoice that it is a British product, and pronounce it a triumph."—*The Photographic Dealer*.

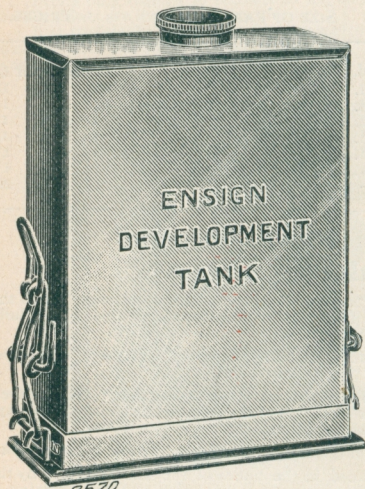
**Even the "Walrus" of "Photography" cannot find any fault with "Ensyna."**—"Never till the other day have I found a printing paper with which I failed to produce the most appalling and heart rending results with ease and certainty. The new paper I was asked to try was described by the Editor as being fool-proof. I believe it is so. It has baffled me. It withstood the most horrible liberties I could devise."

**HOUGHTONS LTD. 88 89 HIGH HOLBORN. W.C.**

# The "Ensign" Development Tank.

**A New and Exceedingly Simple Tank for Developing Plates in Daylight.**

The "Ensign" Development Tank is absolutely free from all complications. It is made entirely of brass, very heavily nickel plated. The inner rack is removable—a great convenience for loading. The action of clamping on the lid renders the tank light-tight, and water-tight. The lid of the tank is fitted with a soft rubber pad into which the top edges of the tank are pressed by the action of clamping. The locking clamps are ingenious but very simple, and have no loose parts.



The developer is introduced through a nozzle fitted with a screw cap. This nozzle opening is protected by the light trap, so that there is no risk of fogging the plates while the developer is being poured in.

Once the plates have been put into the tank in the dark room, the whole process of development is conducted in daylight. The developer is poured into the tank in daylight and the plates can be washed before the tank is opened. Fixing can be done in daylight, when once the plates have been washed free of developer, or, if the tank is well washed afterwards, the negatives can be fixed in the tank right away.

No liquids need be used in the dark room at all.

The simplicity of the "Ensign" Tank has reduced the cost of manufacture and enabled us to sell it at a low price.

It is peculiarly well designed and adapted for constant use. It can be stood upright on either end, has no unnecessary or flimsy fittings, and will outlast any other form of Developing Apparatus.

## Price List of "Ensign" Development Tanks.

Each Tank is complete in itself. New rubber pads need only be purchased in case of damage by accident, or after long use. A separate tank is recommended for fixing, but is not necessary.

No. 0.	To develop 6 plates,	$3\frac{1}{2} \times 2\frac{1}{2}$	..	<b>6/6</b>
" 1.	" "	$4\frac{1}{4} \times 3\frac{1}{4}$	..	<b>7/6</b>
" 2.	" "	$5 \times 4$	..	<b>10/6</b>
" 3.	" "	$5\frac{1}{2} \times 3\frac{1}{2}$	..	<b>10/6</b>
" 4.	" "	$6\frac{1}{2} \times 4\frac{1}{4}$	..	<b>12/6</b>

**HOUGHTONS LTD.** 88  
89 HIGH HOLBORN, W.C.