

City Sale & Exchange

Cheques and P.O.O.'s
Payable to - - R. GREEN.

Telegrams:—

FLEET ST.—“Films, Fleet, London.”

LIME ST.—“Phototypic, Led, London.”

ALDERSGATE ST.—“Retoucher, Bard, London.”

SLOANE SQ.—“Euryscope, Sloane, London.”

Telephone:—

London Wall, 3210A.

London Wall, 3210B.

London Wall, 3210.

Kensington 2575.

CAMERA EXPERTS, MANUFACTURERS, and SHIPPERS.

*The acknowledged LARGEST DEALERS in
Photographic Apparatus in the world.*

OUR SHIPPING DEPARTMENT

is under the personal supervision of the principals of the firm, and clients may rely upon their orders and instructions being fully carried out, and their interests fully studied. Over 30 years experience, and we are daily shipping goods to all parts of the globe

Monthly lists of Shop-soiled & Second-hand Apparatus post free

Any goods advertised in this book may be obtained either for Prompt Cash (at discount prices) or upon our renowned Easy Payment System.

NEWMAN & GUARDIA, SIBYL, & REFLEX CAMERAS fully stocked in all sizes.

OPTICAL DEPTS. at

90 to 94 Fleet Street, E.C. & 26 & 28 King's Road, only.

PRISM, FIELD, OPERA GLASSES and MICROSCOPES,

BY EVERY KNOWN MAKER.

SPORTS, GAMES, CYCLE & ATHLETIC DEPT. at

90 to 94 Fleet Street, only.

LONDON:—

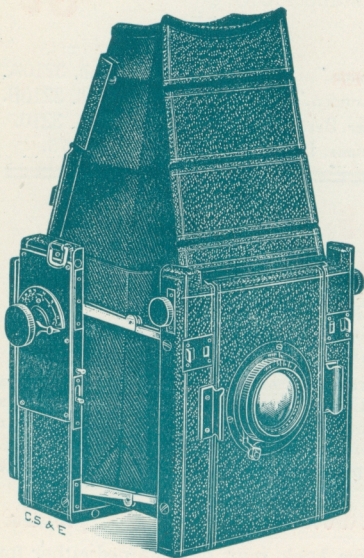
90 to 94 FLEET STREET, E.C. 54 LIME STREET, E.C.

81 ALDERSGATE STREET, E.C. 26 & 28 KING'S RD., SLOANE SQ. S.W.

See following pages.

THE "PLANEX" FOLDING REFLEX CAMERA.

A Folding Reflex which combines every important feature of the ordinary box-form reflex, yet folds as small as $6\frac{3}{4}$ x $5\frac{1}{2}$ x $3\frac{3}{4}$ inches, and weighs, when fitted with lens, only 3 lbs. 8 oz., at the same time when extended for use the front is as firm and



rigid as though the camera were built of solid metal, and it is furthermore perfectly parallel with the sensitive surface of the plate.

Simplicity has been the ideal labored for, and the one movement of pulling the front, with the lens attached, into focus for infinity, raises the deep three-fold focussing hood of the finder ground glass.

Our experiments have extended over a very lengthy period, and not until every mechanical difficulty we encountered had been satisfactorily overcome, did we offer this camera to our clients.

We feel fully assured that it will meet with the approval and prove entirely satisfactory to our customers.

THE COMPACTNESS, EASE OF USE, AND PORTABILITY ARE SUCH THAT NO OTHER REFLEX UPON THE MARKET CAN OFFER COMPARISON.

Made of seasoned mahogany, all metal parts are oxydised or nickel plated, the extending struts are of a special alloy of German silver, with knife spring joints, being strong, firm and rigid when extended.

The rising and falling front, is actuated by a rack and pinion.

The revolving back works upon a plate of aluminium alloy, smooth in working. It can be changed from vertical to horizontal or *vice versa*, with the plate ready for exposure, and it is fitted with a focussing screen for tripod use.

CITY SALE AND EXCHANGE :

54, Lime St., E.C.

26 & 28, King's Rd., Sloane Sq., S.W.

81, Aldersgate St., E.C.

90-94, Fleet St., E.C.

See following and preceding pages.

The "Planex Folding" Reflex Camera—continued.

The focussing hood is of deep three-fold pattern, self-erecting and shaped for the forehead, the image is seen upon the ground glass in the utmost brilliancy. The mirror is silver surfaced.

The self-capping focal plane shutter of entirely new design gives exposures from 1/8th to 1/1000th part of a second and time, it is without doubt the most simple focal plane shutter ever put before the photographic public, the alteration of the slit and speed being done by the simple setting of one lever

SELF-CAPPING SHUTTER

Special note should be made of the fact that in the arrangement for the self-capping of the shutter, there is no crossing or return of the ribbons, which govern the width of the blind aperture—the friction of which is the cause of nine-tenths of the failures with other makes of cameras. In the Planex folding reflex shutter two distinct blinds working on separate rollers are used, which are connected with each other solely by the controlling gear, which provides for the overlapping of the blinds during the setting motion, the independent action of the upper blind within the desired limit of the slit width, maintaining the width desired during the total duration of the exposure, only one winding movement is needed to effect these operations. The shutter is always wound up to the definite stop, which is fixed by the lever pointer, and the same exposure can by this reason be repeated *ad lib*. Further refinement or reduction in simplicity could not possibly be made in focal plane shutters.

The covering of the focussing hood and the bellows are of fine grain Morocco leather.

Focussing by means of a lever and focussing jacket to the lens.

The double dark slides of are block-form pattern, made of ebonised hard wood bound with aluminium, with draw-out hard vulcanite shutters.

PRICES.		1-Plate.		
		£	s.	d.
"Planex Folding" Reflex, with three double dark slides	...	16	10	0
Ditto fitted, Zeiss "Tessar" Anastigmat, F/6.3, 6 in. focus	...	21	0	0
Ditto ditto, Zeiss "Tessar" Anastigmat, F/4.5, 6 in. focus	...	22	12	0
Ditto ditto, Ross "Homocentric" F/4.5, 6 in. focus	...	23	0	0
Ditto ditto, "Cooke" Anastigmat F/4.5, 6 in. focus	...	21	12	6
Ditto ditto, Dallmeyer "Stigmatic," F/6, 6 in. focus	...	22	5	0
Ditto ditto, Dallmeyer "Stigmatic," F/6.3, 6 in. focus	...	19	0	0
Ditto ditto, Goerz "Celor" Double Anastigmat, F/4.8, 6 in. focus	...	22	15	0
Ditto ditto Goerz "Dagor" Double Anastigmat, F/6.8, 6 in. focus	...	22	10	0
Extra Double Dark Slides, each	...		12	0
Changing Box for 12 plates	...	2	8	0
Film Pack Adapter	...		12	0
Leather Case	...	1	0	0

Postcard and Half-plate Now Ready.

Particulars on Application.

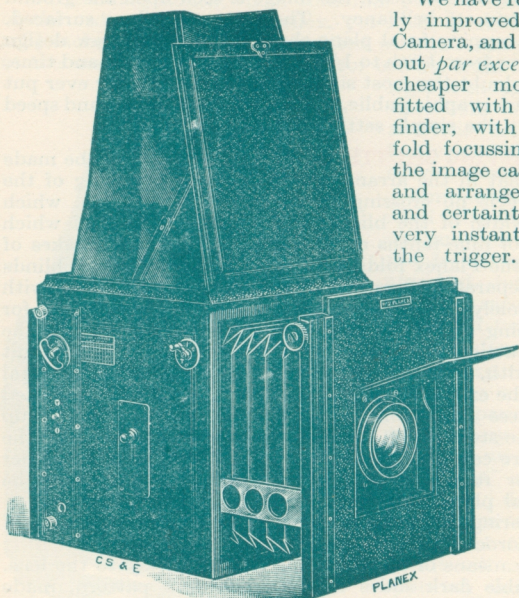
CITY SALE AND EXCHANGE.

81, Aldersgate St., E.C.
90-94, Fleet St. E.C.

26 & 28, Kings Rd., Sloane Sq., S.W.
54, Lime St., E.C.

See following and preceding pages.

The "Planex" Focal Plane Reflex Camera, No. 2



We have recently greatly improved this Reflex Camera, and it now stands out *par excellence* in the cheaper models. It is fitted with a full-sized finder, with deep three-fold focussing hood, and the image can be focussed and arranged with ease and certainty up to the very instant of pressing the trigger.

Over 560 supplied
to Professionals.

Double extension, rack and pinion, with side runners and racks, great rigidity even when fully extended.

Rising and falling front, fitted with a rack and pinion adjustment, and adjustable sky shade.

The rising of the mirror is both smooth and silent; there is no vibration either from it or the shutter.

**OF FIRST-CLASS MANUFACTURE THROUGHOUT;
THE CAMERA IS COVERED WITH HARD GRAIN
MOROCCO LEATHER.**

Focal plane shutter of entirely new design, and is speeded from $\frac{1}{2}$ to $\frac{1}{13000}$ th of a second and time, all adjustments easily effected from outside. Everset mirror.

CITY SALE AND EXCHANGE.

26 & 28, Kings Rd., Sloane Sq., S.W.
54, Lime St., E.C.

90-94, Fleet St., E.C.
81, Aldersgate St., E.C.

See following and preceding pages.

The "Planex" Focal Plane Reflex Camera, No. 2—*cont.*

Revolving reversing back, adjusted for vertical to horizontal or *vice versa* with ease, is fitted to all sizes, including the post card.

Three double plate holders, are supplied with the camera these are aluminium bound with draw-out shutters.

	PRICES.		
	$\frac{1}{4}$ plate	$5\frac{1}{2} \times 3\frac{1}{2}$ or 5×4	$\frac{1}{2}$ plate.
Camera and 3 slides only ...	£7 7 0	£9 9 0	£10 10 0
Fitted "Blitz" Double Anastigmat, Series I., f/4.8...	6 in. 12 12 0	7 in. 15 15 0	$8\frac{1}{4}$ in. 17 17 0
Fitted "Goerz" Dagor Double Anastigmat, f/6.8	6 in. 13 12 0	7 in. 16 14 0	$8\frac{1}{4}$ in. 19 5 0
Fitted "Goerz" Color Anastigmat, f/4.8 ...	6 in. 13 17 0	7 in. 16 19 0	$8\frac{1}{4}$ in. 19 15 0
Fitted Ross "Homocentric" f/4.5 ...	$6\frac{1}{8}$ in. 13 17 0	$7\frac{1}{4}$ in. 17 9 0	$8\frac{1}{2}$ in. 20 10 0
Fitted Ross "Homocentric" f/5.6 ...	6 in. 13 7 0	7 in. 16 9 0	$8\frac{1}{2}$ in. 19 0 0
Fitted Zeiss Double "Protar" Series VIIA, f/6.3 ...	$6\frac{1}{2}$ in. 16 11 0	8 in. 20 12 0	$9\frac{1}{4}$ in. 24 12 0
Fitted Zeiss "Tessar" f/6.3	6 in. 12 7 0	$7\frac{1}{8}$ in. 16 9 0	$8\frac{1}{4}$ in. 19 0 0
Fitted Zeiss "Tessar," f/4.5	6 in. 13 17 0	$7\frac{1}{16}$ in. 17 9 0	$8\frac{1}{4}$ in. 20 10 0
Fitted Dallmeyer "Stigmatic" Series II., f/6 ...	6 in. 13 15 0	7.6 in. 17 13 0	9 in. 20 10 0
Fitted Dallmeyer "Stigmatic," Series IV., f/6.3 ...	6 in. 10 17 0	7 in. 13 14 0	$8\frac{1}{4}$ in. 16 5 0
Fitted "Cooke," Series II., f/4.5 ...	6 in. 13 3 6	7 in. 15 18 3	8 in. 17 12 6
Fitted "Cooke," Series IV., f/5.6 ...	$6\frac{3}{8}$ in. 12 8 9	8 in. 16 1 0	$9\frac{1}{2}$ in. 19 5 9
Fitted Voigtlander "Heliar," f/4.5 ...	$6\frac{1}{4}$ in. 13 17 0	$7\frac{1}{8}$ in. 17 9 0	$9\frac{1}{2}$ in. 24 0 0
"Adon" Telephoto lens, including fitting ...	3 10 0	3 10 0	3 10 0
Extra Double Dark slides, each	11 0	12 0	15 0
Changing Box for 12 plates...	2 8 0	—	3 15 0
Premo Film Pack adapter, leather covered ...	10 6	12 6	14 6
Waterproof Tweed Case for Camera and 3 slides ...	12 9	17 6	19 6
Solid Leather Case for Camera and 3 slides ...	15 0	1 0 0	1 10 0

CITY SALE AND EXCHANGE.

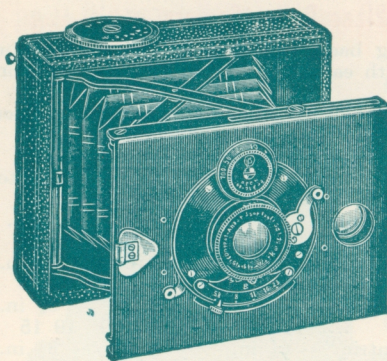
90-94, Fleet St., E.C

81, Aldersgate St., E.C.

54, Lime St., E.C

26 & 28, Kings Rd., Sloane Sq., S.W

See following and preceding pages.



THE "SALEX" VEST POCKET CAMERA.

$2\frac{5}{16} \times 1\frac{1}{4}$ in. or $4\frac{1}{2} \times 6$ cm.

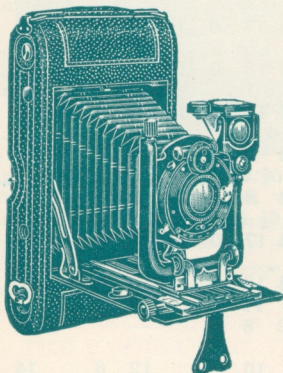
For Plates or Film Packs.

A folding Camera for the vest pocket, measuring when closed about $3\frac{1}{8} \times 2\frac{1}{2} \times \frac{1}{2}$ ins., and focussing on the lazy tongs principle. Made throughout of metal, covered with real leather. Speeded Time and Instantaneous Shutter, View Finder either way of the plate.

A beautiful little Camera with ground glass Focussing Screen, and three Metal Plate Holders in Case.

PRICE.

	£	s.	d.
Fitted with "Achromatic" Lens	1	15	0
" " "Detective" Aplanat Lens, F/6.8	2	7	0
" " "Double Anastigmat" Lens, F/5.8	3	15	0
" " "Zeiss Tessar" Lens, F/6.3 in Compound Shutter	8	5	0
" " "Zeiss Tessar" Lens, F/4.5 in Compound Shutter	9	0	0
Extra Slides, 3 in Wallet		3	10
Extra Slides, each		1	0
Film Pack Adapter		3	10



THE "SALEX" NO. 1 ROLL FILM CAMERA.

$\frac{1}{4}$ Plate for Roll Films or Plates.

Thoroughly well constructed of seasoned wood, covered with hard grained Morocco Leatherette, Aluminium baseboard, rising and cross front, first quality Extra Rapid Aplanat Lens F/7.7, giving exquisite definition, Ibsco Sector Time and Instantaneous Shutter, speeded 1 to 100th second, brilliant finder, with Spirit Level, Leather, Bellows, Rack and Pinion Focussing, Infinity Catch. Well finished in every detail.

PRICE.

	£	s.	d.
Fitted as above	3	0	0
" Goerz "Dagor," F/6.8	7	15	0
" "Cooke" Anastigmat Series III., F/6.5	6	17	0
" Zeiss "Tessar" F/6.3	7	5	0
" Dallmeyer "Stigmatic" F/6.3	5	10	0

CITY SALE AND EXCHANGE.

54, Lime St., E.C.

26 & 28, Kings Rd., Sloane Sq., S W.

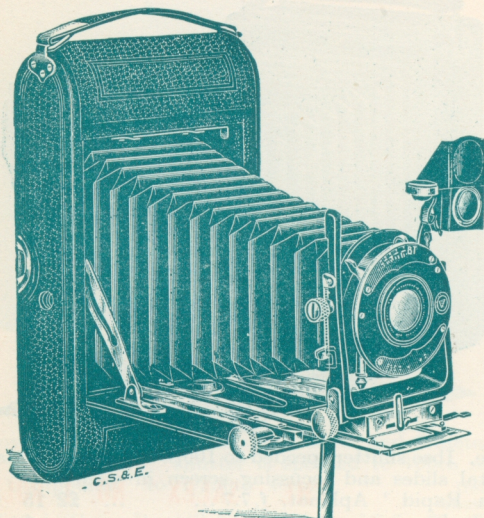
81, Aldersgate St., E C.

90-94, Fleet St., E.C.

See following and preceding pages.

The "Salex" Improved Roll Film Camera.

4½ by 3½, and Postcard for Roll Films or Plates.



Thoroughly well-made of seasoned mahogany, covered externally in hard grained Morocco leather. Baseboard of oxydised aluminium.

New U-shaped front fork of magnalium, extremely rigid rack and pinion rising front cross front. Nickel plated and magnalium fittings, well finished in every detail.

Extra Rapid Aplanat Lens, giving exquisite definition, Iris, f/8. Ibsso Sector time and instant shutter, 1 to 1-100th second.

Double brilliant reversing finder, with Spirit Level. Long double extension best leather bellows, rack and pinion focussing. Infinity catch readily put out of action if not required.

	PRICE.	1-plate.	Postcard.
Fitted "Extra" Rapid Aplanat Lens, f/8	...	£3 12 6	£4 10 0
Fitted "Ross Homocentric" f/6.8 lens	...	7 2 6	8 10 0
Fitted "Cooke Anastigmat" f/6.5 lens	...	7 4 6	8 12 6
Fitted "Goerz Dagor" Double Anastigmat f/6.8 lens	...	8 7 6	10 5 0
Fitted "Zeiss Tessar," f/6.3 lens	...	7 17 6	10 0 0
Fitted "Zeiss Double Protar," Series VIIa, f/6.3 lens	...	10 17 6	13 4 0
Fitted Dallmeyer Stigmatic "Carfac," f/6.3	...	6 2 6	7 10 0
Fitted Dallmeyer Stigmatic f/6	...	8 17 6	10 15 0
Focussing Screen with Hood	...	4 0	5 0
Single Metal Dark Slides, each	...	1 6	1 9
Leather Case with Sling Strap	...	5 6	6 9
Extra for "Compound" Shutter in place of Ibsso	...	15 0	15 0

CITY SALE AND EXCHANGE.

81, Aldersgate St., E.C.
90-94, Fleet St., E.C.

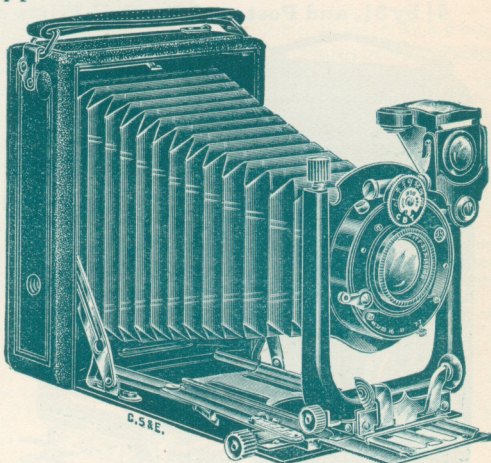
26 & 28, Kings Rd., Sloane Sq., S.W.
54, Lime St., E.C.

See following and preceding pages.

The "Salex" Pocket Camera, No. 1.

$\frac{1}{4}$ -plate for Plate or Film Packs.

A very fine Camera, with black polished folding base, rack and pinion focussing, solid cast magnalium U-shaped front, with rising and cross movement, infinity catch, focussing scale, folding brilliant finder with spirit level, leather bellows and covered Mor-



occo leatherette. Ibsco shutter speeded to 100th second and time,

Three metal slides and focussing screen in wallet.

Fitted "Extra Rapid" Aplanat, f/7.7 ...	£2 15 0
Extra Slides, each ...	1 3
Film Pack Adapter ...	4 6
Antinous Release ...	2 6

The "Salex" Pocket Camera.

$3\frac{1}{2} \times 2\frac{1}{2}$ For Plates or Film Packs.

Of similar general design to the above but made entirely of Metal, with Aluminium folding base, infinity catch, rack and pinion focussing, rack rising and cross movement, brilliant finder with spirit level, covered with real Morocco leather.

Three metal slides and focussing screen in wallet.

	With Ibsco Shutter.	With Com-pound Shutter
Fitted "Extra Rapid" Aplanat lens, f/7.7	£3 7 6	£3 17 6
Fitted Zeiss "Tessar" f/6.3	7 5 0	7 15 0
Extra Slides, each	1 0
Film Pack Adapter	4 0
Antinous Release	2 6

CITY SALE AND EXCHANGE.

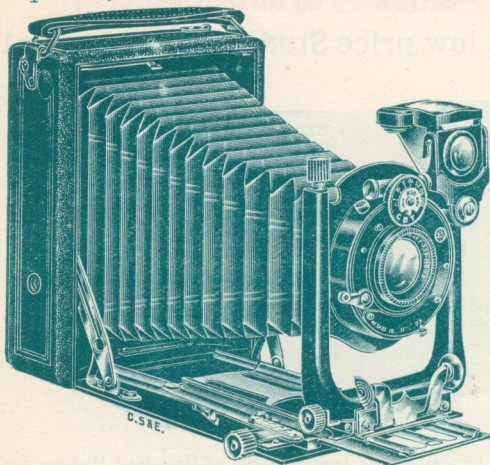
26 & 28, Kings Rd., Sloane Sq., S.W.
54, Lime St., E.C.

90-94, Fleet St. E.C.
81, Aldersgate St., E.C

See following and preceding pages.

The "Salex" Pocket Camera, No. 2.

$\frac{1}{4}$ -Plate, for Plates or Film Packs. Double Extension.



This Pocket Camera is fitted with aluminium base board, double extension, rack and pinion adjustments, infinity catch and scale.

Solid U-front, in magnalium, rising and cross movements, brilliant finder, spirit level, leather bellows. Real leather

covering, focussing screen with hood, and 3 metal slides in case.

The "Ibso" shutter is speeded to 100th second, and the "Compound" to 1/250th second.

	Ibso Shutter.	Compound Shutter.
Fitted "Extra Rapid" Aplanat Lens, f/7.7	£3 7 6	£3 17 6
„ Dallmeyer "Stigmatic" f/6.3 ...	5 17 6	6 7 6
„ "Cooke" Anastigmat, f/6.5 ...	7 4 6	7 14 6
„ Zeiss "Tessar" f/6.3 ...	7 12 6	8 2 6
Extra Slides, each	1 3
Film Pack Adapter...	...	4 6

The "Salex" Pocket Camera, No. 2.

Postcard, for Plates or Film Packs. Double Extension.

Is of the same general design and possesses the same features as our Qr.-pl. Salex No. 2 Pocket Camera, described above.

Fitted "Extra Rapid" Aplanat, f/7.7..	£4 4 0	£4 14 0
„ Dallmeyer "Stigmatic" f/6.3 ...	7 4 0	7 14 0
„ "Cooke" Anastigmat, f/6.5 ...	8 6 0	8 16 0
„ Zeiss "Tessar" f/6.3 ...	9 14 0	10 4 0
Extra Slides, each	2 0
Film Pack Adapter	6 6
Antinous Release	2 6

CITY SALE AND EXCHANGE.

90-94, Fleet St., E.C.

81, Aldersgate St., E.C.

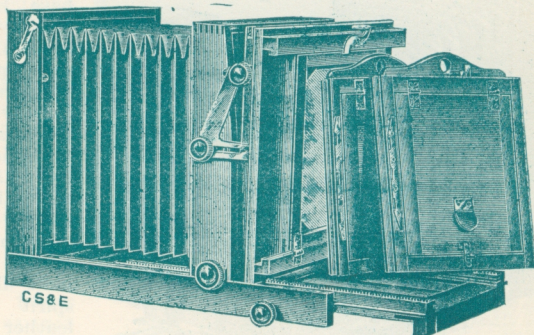
54, Lime St., E.C.

26 & 28, Kings Rd., Sloane Sq., S.W.

See following and preceding pages.

The "Salex" Studio Camera.

The finest low price Studio Camera extant



A thoroughly well-made Instrument, of Polished Mahogany, has very long extension by extending base, suitable for copying and all classes of general studio work.

Focussing by rack and pinion with locking arrangement and all the latest improvements, including Double Swing, Horizontal, and Vertical, Repeating back.

The set includes two thoroughly well-made Dark Slides, complete with Carriers down to quarter-plate, and spring catches to shutters, repeating, one for two C. de V's. on half-plate and one for two Cabinets on a whole plate.

8½ x 6½, about 33 inches Extension	£5 10 0
12 x 10, about 44 inches Extension	7 15 0
Extra Slides, 8½ x 6½, each	15 0
Extra Slides, 12 x 10, each	1 2 0

CITY SALE AND EXCHANGE

54, Lime St., E.C.

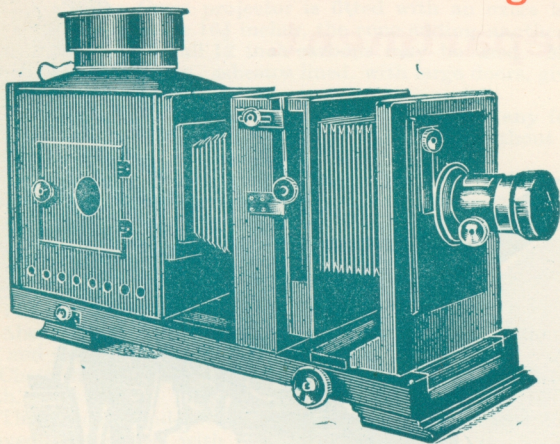
26 & 28, Kings Rd., Sloane Sq., S.W.

See following and preceding pages.

81, Aldersgate St., E.C.

90-94, Fleet St., E.C.

The "Salex" No. 2 Enlarger.



The 'Salex' No. 2 Enlarger has been entirely re-designed, and is fitted with long extension rack and pinion focussing.

Made of solid Mahogany, well-polished, with swing and reversing negative carrier, rising front, large Russian iron body, with rack adjustment. Best quality plano-convex condenser in oxydised brass cells. Superior quality achromatic objective, with rack and pinion, Iris diaphragm, and orange-glass cap.

PRICES.

	Without Objective.		With Objective.	
Qr.-pl. with 5½-in. condenser ...	£3	5 0	£4	0 0
5 x 4 and p.c. with 6½-in. condenser	4	0 0	5	0 0
Half-pl. with 8½-in....	5	15 0	7	0 0
I/1 pl. with 11-in....	12	0 0	14	15 0

Enlargers by all makers always in stock.

Full Lists post free.

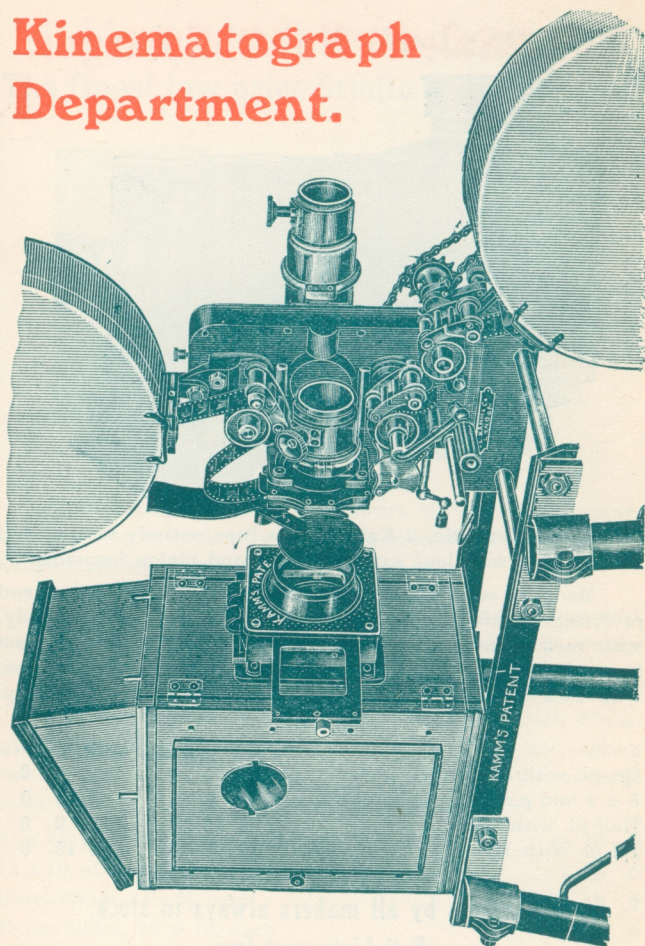
CITY SALE AND EXCHANGE.

81, Aldersgate St., E.C.
90-94, Fleet St., E.C.

26 & 28, Kings Rd., Sloane Sq., S.W.
54, Lime St., E.C.

See following and preceding pages.

Kinematograph Department.



CITY SALE AND EXCHANGE.

90-94, Fleet St., E.C.

54, Lime St., E.C.

81, Aldersgate St., E.C.

26 & 28, Kings Rd., Sloane Sq., S.W.

See following and preceding pages.

Kinematograph Department.

Our Maltese Cross projector is fitted with an extra large lamp house, $12\frac{1}{2} \times 10 \times 16\frac{1}{2}$ inches, the cone adding another $4\frac{1}{2}$ inches to the height, full 12 inch carbons may be used. Made of Sheffield steel plates, asbestos lined, with large doors, giving easy access to the lamp.

The shutter is immediately behind the film, and any focus lens may be used. Masking of the picture is done without any interference with the optical axis.

The removable bearings, $4\frac{1}{2}$ in. long, are made of special metal, all pinions and the Maltese Cross are made of hardened steel.

The film gate is of solid construction, the runners being hardened case steel and can be adjusted whilst running.

A Rock steady Picture and all flicker is absolutely done away with.

The automatic shutter cannot get out of order.

Absolutely correct sprocket wheels taking any size standard film, and made of specially forged metal.

Chain driven take-up working in connection with a friction clutch.

The patent condenser mounts enable a single lens to be removed or inserted with ease and convenience.

The base is of steel and the mechanism slides upon rods, and when locked is absolutely solid.

Girder principle spool arms, with automatic locking device, metal slide carrier.

The general finish is of the best, the frame-work being stove enamelled black, and all steel parts nickelled.

Price with lamp house on steel frame, Lantern			
and Kine lenses and two spools	£35	0 0
14 in. fireproof spool boxes, each	1	10 0
Telescopic steel stand	3	0 0

These projectors are used by H.M. Government.

Our latest dog-movement projector (illustrated) is of exactly the same specification as our Maltese Cross, except that the movement is of dog form, and an extra sprocket is added for steadiness.

Price with lamp house, Lantern and Kine lenses, and			
two spools	£30	0 0

Guarantee.—The projectors are guaranteed to show a good picture after three years working twelve hours a day.

All parts are universal and interchangeable.

5% Discount for Cash.

Full List Post Free.

CITY SALE AND EXCHANGE

54, Lime St., E.C.

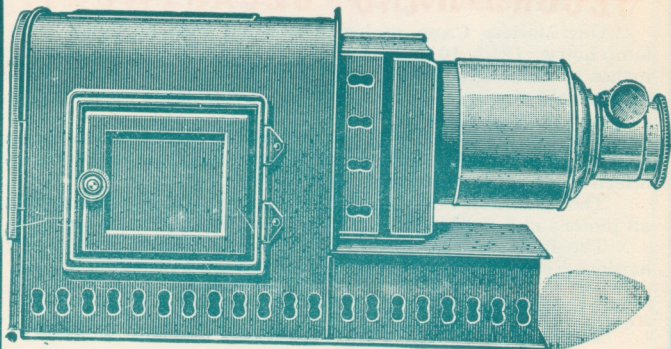
26 & 28, Kings Rd., Sloane Sq., S.W.

81, Aldersgate St., E.C.

90-94, Fleet St., E.C.

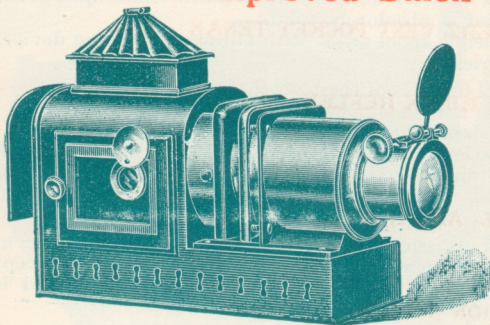
See following and preceding pages.

The 'Rex' Russian Iron Lantern.



Well-made in Russian Iron, ventilated, all brass front, draw tube, brass stage, panelled doors, sight holes, double Achromatic lens, and rack focussing, 4-in. compound condenser, in case.
 With 3-wick lamp £1 8 6

The No. 3 Improved Salex Lantern.



Superior Russian iron, solid brass front and stage, $4\frac{1}{2}$ -in. double Meniscus condenser, brass cell, $2\frac{3}{8}$ diameter objective with rack focussing, and flasher in case.

Fitted 4-wick lamp or blow

through jet £4 0 0

Fitted solid brass 3-draw telescopic front, for lenses up to 15-in. focus, $2\frac{3}{8}$ in. objective, interchangeable.

Price £5 4 6

Extra Cylinder lenses any focus, each 14 9

CITY SALE AND EXCHANGE.

26 & 28, Kings Rd., Sloane Sq., S.W.

54, Lime St., E.C.

90-94, Fleet St., E.C.

81, Aldersgate St., E.C.

See following and preceding pages.

SECOND-HAND DEPARTMENT.

In this department we hold the largest and most varied stock of first-class photographic apparatus in the world ; furthermore, we guarantee each article to be in A1 condition, and absolutely reliable in every sense of the word.

We issue in connection with this department a monthly list, which contains the latest additions to our stock, and clients abroad may rely upon us filling their orders promptly with reliable apparatus.

Below we give a few representative items :—

- Qr -pl. NEWMAN & GUARDIA**, square form reflex, long extension, rising front, revolving back, focal plane shutter 1/10th to 1/800th second and time, Zeiss double Protar Anastigmat Series VIIA f/6.3, changing box and leather case, cost £36 15 0, price ... **£25 0 0**
- 5 x 4 ROSS REFLEX**, (Kershaw patent), double extension, rising front, revolving back, focal plane shutter 1/15th to 1/800th second and time, Ross f/4.5 Homocentric Anastigmat, 3 double slides, film pack adapter and leather case, cost £27 10 0, price ... **£18 12 6**
- 4½ x 6 c/m GOERZ VEST POCKET TENAX** focussing, Dagor f/6.8 Anastigmat, 6 slides, 2 purse cases, cost £10 15 0 price ... **£7 12 6**
- Qr.-pl. ADAMS MINEX REFLEX**, in fine order, long extension, rising front, revolving back, self-capping blind focal plane shutter to 1/1000th second and time, Zeiss Tessar f/4.5 Anastigmat, 3 double slides and best leather case, cost £36 0 0, price ... **£25 0 0**
- Qr.-pl. GOERZ ANSCHUTZ**, self-capping blind focal plane shutter, 5 seconds to 1/1200th and time, Goerz Celor Anastigmat f/4.8 focussing, 3 double slides, film pack adapter and leather case, cost £15 14 0, price ... **£9 17 6**
- 12 x 10 MARION STUDIO**, solid mahogany, leather bellows, rising front, long extension, horizontal and vertical swing back, 2 repeating slides with carriers, Dallmeyer 4B patent portrait lens, Iris with soft focus adjustment, complete with Watson's interior studio shutter, cost £58 15 0, price ... **£32 12 6**

CITY SALE AND EXCHANGE.

81, Aldersgate St., E.C.
90-94, Fleet St., E.C.

26 & 28, Kings Rd., Sloane Sq., S.W.
54, Lime St., E.C.

See following and preceding pages.

- 10 x 8 SICHEL FORWARD**, studio camera, solid mahogany, extra long extension, for copying, horizontal and vertical swing back, handsome ebonised twin pillar stand with Archimedian screw raising, lowering and tilting adjustment, Cooke 10½-in. f/4.5 portrait Anastigmat, Iris with soft focus adjustment, 4 repeating slides with carriers, complete, an ideal outfit, cost £32 0 0... **£19 0 0**
- 1/1 pl. HERBST STUDIO**, long extension (about 36 inches), horizontal and vertical swing back, Ross No. 3 Cabinet portrait lens, rack and pinion focussing, two repeating slides with carriers, cost £25 0 0 ... **£14 15 0**
- 1/1 pl. WATSON'S ACME**, latest model triple extension, in fine order, rack and pinion focussing, rising front, reversing and swing back, Thornton-Pickard time and inst. shutter, 3 double book-form slides, 9½-in. Goerz Dagor Anastigmat f/6.8, Iris, best quality solid leather case, as new, cost £26 10 0, price ... **£16 17 6**
- 1/1 pl. ADAMS CLUB**, conical bellows field outfit, solid mahogany, double extension, rising front, reversing and swing back, 3 double book-form slides, solid brass turntable, 10-in. Zeiss Tessar Anastigmat f/4.5, Iris, roller blind shutter, case and tripod, cost £32 10 0, price ... **£19 10 0**
- 1/1 pl. SANDERSON REGULAR POPULAR**, long extension, universal rising falling and swing front, reversing and swing back, T.P. roller blind time and inst. shutter, Ross rapid Symmetrical lens, f/8, 3 double book-form slides, turntable, tripod and case, cost £16 0 0, price ... **£7 10 0**
- Qr.-pl. ADAMS VESTA**, fitted Ross Homocentric, f/6.8 Anastigmat, compound sector shutter 1 to 1/200th second and time, rising front, 6 slides and leather case, cost £12 10 0, price **£7 15 0**
- 10 x 8 THORNTON-PICKARD RUBY**, double extension, rising front, reversing and swing back, three double book-form slides, T.P. time and inst. shutter, Dallmeyer No. 7 Stigmatic Series II. f/6, Iris, turntable, three-fold tripod and case, cost £38 15 0, price ... **£20 0 0**
- 1/1pl. ELITE STUDIO CAMERA**, brass-bound throughout long extension (about 36 inches), double rack and pinion, focussing, rising front, horizontal and vertical swing back, Cooke 10½-in. f/4.5 portrait Anastigmat with Iris diaphragm, and soft focus adjustment, two repeating slides, rigid ebonised twin pillar stand with mechanical adjustments, in fine order, cost £33 0 0, price ... **£22 10 0**

CITY SALE AND EXCHANGE.

26 & 28, Kings Rd., Sloane Sq., S.W.
54, Lime St., E.C.

90-94, Fleet St., E.C.
81, Aldersgate St., E.C.

See following and preceding pages.

- 10 x 8 $\frac{1}{2}$ CENTURY FIELD CAMERA**, best quality conical bellows double extension, rising front, reversing and swing back, 3 double slides, Thornton-Pickard shutter, Voigtlander Collinear Series II. f/6.3, Anastigmat, Iris, complete in two cases, cost £32 15 0, price ... **£18 10 0**
- No. 3 SPECIAL KODAK**, in new condition, fitted Zeiss Tessar f/6.3 Anastigmat, compound sector shutter, rising front, rack focussing leather case, cost £10 10 0, price **£7 12 6**
- 12 x 10 SALON DE LUXE STUDIO OUTFIT**, handsomely polished walnut camera with about 60-in. extension, brass bound, finished in nickel, compound rack and pinion focussing, rising, horizontal and vertical swing back, one roller curtain slide, with carriers, 1/1pl. back, with two repeating slides, handsome ebonised triple pillar stand with Archimedian screw raising, lowering and tilting adjustments, Watson interior bellows, studio shutter, Dallmeyer 4B patent portrait lens, with Iris diaphragm, and soft focus adjustment, an ideal outfit in excellent order, cost £65 0 0, price ... **£45 10 0**
- 12 x 10 WATSON STUDIO CAMERA**, leather bellows, long extension, rising front, swing back, 2 repeating slides, bellows studio shutter, Dallmeyer 6D patent portrait lens with soft focus adjustment, strong ash studio stand with Archimedian screw raising, lowering and tilting adjustments, cost £39 10 0, price ... **£20 0 0**
- 5 x 4 REGULAR SANDERSON**, hand and stand, long extension, universal rising, falling and swing front, reversing back, Goerz Dagor f/6.8 Anastigmat in compound sector shutter, 1 to 1/200th second and time, 3 double slides and leather case, cost £14 5 0, price ... **£9 5 0**
- 3 $\frac{1}{2}$ x 2 $\frac{1}{2}$ GAUMONT'S No. 2 BLOCKNOTE**, fitted Zeiss Tessar f/6.3 Anastigmat, speeded shutter, focussing adjustment, 6 single metal slides, film pack adapter and leather case, cost £16 10 0, price ... **£10 0 0**
- 4 $\frac{1}{2}$ x 6 c/m ZEISS BEBE, VEST POCKET** all metal, focussing, Carl Zeiss Tessar f/4.5, Anastigmat, speeded shutter, 1 to 1/100th second and time, 6 slides, 2 cases, cost £10 10 0, price ... **£7 15 6**
- Half-ql. GOERZ ANSCHUTZ**, self-capping focal plane shutter, 5 seconds to 1/1200th second and time, Goerz Celor f/4.8 Anastigmat, focussing, rising and cross front, 6 double slides, and leather case, cost £21 0 0 price ... **£14 12 6**

CITY SALE AND EXCHANGE :

90-94, Fleet St., E.C.
81, Aldersgate St., E.C

54, Lime St., E.C.
26 & 28, King's Rd., Sloane Sq., S.W

See following and preceding pages.

Send us your old apparatus
that we may allow you
FULL market value for
same in exchange for
any apparatus adver-
tised in this book
which we supply at
discount prices for
prompt cash.

We will mail you
free upon de-
mand any of
the following
Depart-
mental
Lists.



CITY SALE & EXCHANGE,
90 to 94 FLEET STREET, LONDON, E.C.4.
81 ALDERSGATE STREET, LONDON, E.C.3.
54 LIME STREET, LONDON, E.C.6.
26 & 28 KING'S ROAD, SLOANE SQUARE, LONDON, S.W.1.

1. Photo-
graphic
(350 pages).
2. Second-
hand Photo-
graphic Appar-
atus (monthly).
3. Optical and
Sight Testing.
4. Cycles & Acces-
sories.
5. Outdoor Sports &
Pastimes.
6. Indoor Games,
Model Engines, etc.
7. Gramophones, Phono-
graphs and Records.
8. Optical Lanterns, Kine-
matographs, etc.
9. Lantern Slides and Dissolv-
ing Views.
10. The Eye and its defects
11. Mathematical and Drawing
Instruments.

See preceding pages.