



PREMO
CAMERAS

Premo Simplicity

THERE is a large variety of models and sizes of Premo Cameras from which to make a selection that will meet almost any requirement.

Premo Cameras and Premo Film Packs offer all the advantages of film convenience, as well as unusual simplicity and rapidity of operation.

To load, open the back of camera, drop in the Premo Film Pack, close the back and draw the safety cover protecting the first exposure. The films are very quickly changed for successive exposures by drawing out, with one movement, the consecutively numbered tabs. To unload, open the back and remove the Film Pack, which is automatically rendered light tight when the last tab is drawn.

With the Premo Film Pack Adapter, Plate Cameras may be converted into daylight loading Film Cameras permitting ground glass focusing before every exposure.

This little booklet can merely give you a hint as to the attractiveness of the Premo Cameras. Your dealer will be glad to supply you on request with the Premo Catalogue describing all the cameras and accessories, and will willingly show you the simplicity of Premo operation.

ROCHESTER OPTICAL DEPARTMENT

EASTMAN KODAK COMPANY

ROCHESTER, N. Y.

Premo Junior



A CAMERA that is always ready for immediate use. No focusing or estimating of distances is required. Open the back, drop in the pack, draw the safety cover, and the camera is ready for the first exposure.

This simplicity of operation recommends the camera to anyone desiring a reliable camera of the fixed focus type.

SPECIFICATIONS

Capacity: 12 exposures without reloading. Size of Camera: No. 1, $3\frac{1}{8} \times 4\frac{1}{2} \times 5\frac{3}{4}$ in.; No. 1A, $3\frac{1}{2} \times 5\frac{1}{2} \times 5\frac{7}{8}$ in.; No. 3, $4 \times 5\frac{1}{2} \times 5\frac{3}{4}$ in. Weight: No. 1, 11 ozs.; No. 1A, 14 ozs.; No. 3, 20 ozs. Shutters: Rotary Automatic, with diaphragm stops. Lens: No. 1, Meniscus; Nos. 1A and 3, Meniscus Achromatic. Finders: two. Tripod Sockets: two.

PRICES

	No. 1 $2\frac{1}{4} \times 3\frac{1}{4}$	No. 1A $2\frac{1}{2} \times 4\frac{1}{4}$	No. 3 $3\frac{1}{4} \times 4\frac{1}{4}$
Premo Junior, as per specifications	\$2.92	\$3.71	\$4.77
Carrying Case	1.20	1.35	1.45
Premo Film Pack (12 exposures)	.41	.52	.72
Kodak Portrait Attachment	.50	.50	.50

The Prices of Camera and Film Include the Excise War Tax.

Premoette Junior



THE Premoette Junior folds into such compact form that it may be conveniently carried, and clearly defined pictures of excellent quality may be made upon Premo Film Packs, which provide the utmost simplicity of loading, unloading and changing the exposed film.

SPECIFICATIONS

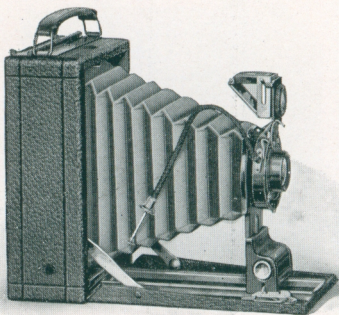
Premoette Jr. No. 1. Dimensions: $1\frac{1}{2} \times 3 \times 4\frac{3}{4}$ in. Weight: 12 ozs. Finder: collapsible, reversible, brilliant. Tripod Sockets: two.

PRICES

	No. 1 $2\frac{1}{4} \times 3\frac{1}{4}$
Premoette Jr. with Meniscus Achromatic Lens and	
Kodak Ball Bearing Shutter	\$ 8.48
With Planatograph Lens	10.60
With Kodak Anastigmat Lens, <i>f.</i> 7.7	16.96
Sole Leather Carrying Case	1.75
Kodak Portrait Attachment50
Premo Film Pack (12 exposures)41

The Prices of Camera and Film Include the Excise War Tax.

Premoette Senior



THIS camera was designed to embody the advantages of compactness, simplicity of operation, and standard lens equipments. It is supplied in three popular sizes fitted with R. R. Lens or the Kodak Anastigmat, $f. 7.7$, and is especially recommended with the Anastigmat. The definition and covering power of this lens is equal to any anastigmat made, and has a higher speed than any R. R. Lens. Thus in getting this camera, the amateur assures himself not only of the microscopic definition of the finest anastigmat, but also of a greater speed than is possible with the ordinarily equipped camera.

Premoette Senior

The Premoette Senior can be loaded very quickly in any light; just open the back of the camera, drop in the Premo Film Pack, close the back, draw the safety cover, and the first film is in position for exposure. The exposed film is changed by drawing successively numbered tabs.

The shutter is the Kodak Ball Bearing with time and bulb actions and retarded speed of $1/25$, $1/50$ and $1/100$ seconds. It works with either cable or finger release and is unusually accurate and reliable.

Premoette Seniors are covered with genuine leather of selected grain, metal parts are finished in nickel and black lacquer. When fitted with Kodak Portrait Attachment the pleasing proportions of the pictures make these cameras excellent for home portraiture.

SPECIFICATIONS

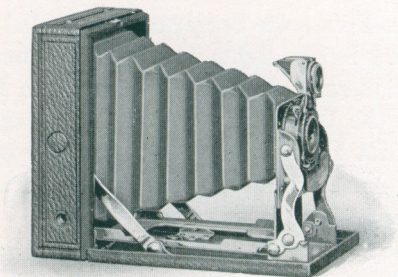
Capacity: 12 exposures. Box: seasoned wood. Bed and Back: aluminum. Dimensions: $2\frac{1}{2} \times 4\frac{1}{4}$, $1\frac{7}{8} \times 3\frac{5}{8} \times 5\frac{5}{8}$ in.; $3\frac{1}{4} \times 4\frac{1}{4}$, $1\frac{1}{8} \times 4\frac{1}{8} \times 5\frac{5}{8}$ in.; 3A, $3\frac{1}{4} \times 5\frac{1}{2}$, $2\frac{1}{4} \times 4\frac{1}{2} \times 7\frac{1}{8}$ in. Weight: $2\frac{1}{2} \times 4\frac{1}{4}$, 21 ozs.; $3\frac{1}{4} \times 4\frac{1}{4}$, 22 ozs.; 3A, $3\frac{1}{4} \times 5\frac{1}{2}$, 35 ozs. Lens: Rapid Rectilinear. Shutter: Kodak Ball Bearing. Tripod Sockets: two. Finder: reversible brilliant, collapsible. Automatic standard clamp. Automatic focusing lock.

PRICES

	$2\frac{1}{2} \times 4\frac{1}{4}$	$3\frac{1}{4} \times 4\frac{1}{4}$	3A $3\frac{1}{4} \times 5\frac{1}{2}$
Premoette Sr. with R. R. Lens and Kodak Ball Bearing Shutter . . .	\$13.25	\$13.25	\$16.96
With Kodak Anastigmat Lens, f. 7.7	19.61	19.61	23.32
Sole Leather Carrying Case . . .	2.75	2.75	3.50
Premo Film Pack (12 exposures) . .	.52	.72	.83
Kodak Portrait Attachment50	.50	.50

The Prices of Camera and Film Include the Excise War Tax.

Pocket Premo



EXTREME compactness, rapidity and simplicity of loading and operating are specially featured with this attractive little camera.

No focusing or estimating of distances is required. The front standard, bearing the lens and shutter, automatically unfolds and is extended and locked rigidly in focusing position when the bed of the camera is drawn down. The Pocket Premo may be brought into action very quickly, and for that reason unusual and interesting pictures may be secured that would be lost if adjustment of focus were necessary.

The camera is closed by pressing the two side arms and raising the bed, which causes the bellows and entire front to compactly refold within the camera body.

This little camera makes $2\frac{1}{4} \times 3\frac{1}{4}$ pictures upon Premo Film Packs, and when

Pocket Premo

closed, it has about the same dimensions as two $2\frac{1}{4} \times 3\frac{1}{4}$ Film Packs.

Maximum compactness in the construction of this model is obtained by means of the Collapsible Back, which may be quickly extended to receive the Premo Film Pack, containing 12 exposures. After the Pack has been placed in position in the camera, the safety cover protecting the first exposure, is drawn.

The Meniscus Achromatic Lens fitted to the camera is carefully tested and adjusted, and will produce negatives of excellent quality, from which enlargements many times the size of the contact print may easily be made.

The smooth working Kodak Ball Bearing Shutter, supplied, provides for speeds of $1/25$ and $1/50$ of a second, as well as time and bulb exposures.

The Pocket Premo is covered with a fine quality of grain leather, and all metal parts are finished in nickel.

SPECIFICATIONS

Capacity: 12 exposures without reloading. Size of picture: $2\frac{1}{4} \times 3\frac{1}{4}$. Dimensions: $1\frac{1}{4} \times 3\frac{1}{4} \times 4\frac{9}{16}$. Weight: 18 ozs. Shutter, Kodak Ball Bearing. Lens: Meniscus Achromatic. Finder: Collapsible. Tripod Sockets: two.

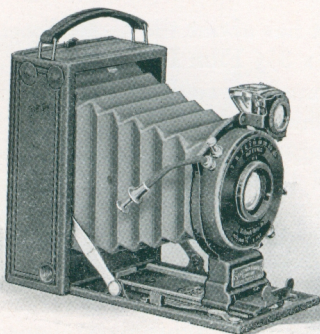
PRICES

$2\frac{1}{4} \times 3\frac{1}{4}$

Pocket Premo with Meniscus Achromatic Lens and Kodak Ball Bearing Shutter	\$10.60
Carrying Case to hold camera and Premo Film Pack	1.20
Premo Film Pack (12 exposures)	.41
Kodak Portrait Attachment	.50

The Prices of Camera and Film Include the Excise War Tax.

Premo No. 12



HERE is a camera that provides for the user exceptional photographic efficiency. Every essential feature for successful picture making under greatly varied conditions of amateur photography is embodied in this model.

The $2\frac{1}{4} \times 3\frac{1}{4}$ pictures may be made upon Premo Film Packs, the brand of plates best suited to the subject, or Graflex Roll Films used in the special Roll Holder made to fit the camera.

Another feature of the Premo No. 12 is the provision for accurate focusing and arrangement of the composition of every picture made. If direct focusing and composition of the full size picture is not essential, the lens is set on the Focusing Scale at a point indicating the estimated distance of the subject.

With the high speed Anastigmat Lens and Optimo Shutter equipment, it is easily possible to obtain successful pictures of unusual and interesting subjects, difficult to procure with other types of cameras.

Premo No. 12

For those who do not require the high speed equipments, we offer the camera equipped with Ball Bearing Shutter and Kodak Anastigmat, *f.* 7.7, or Rapid Rectilinear Lens.

The Premo No. 12 is so small and compact that it may be conveniently carried in the pocket. It is covered with the finest quality of grain leather, handsomely embossed, and all metal parts are finished in nickel and black enamel.

SPECIFICATIONS

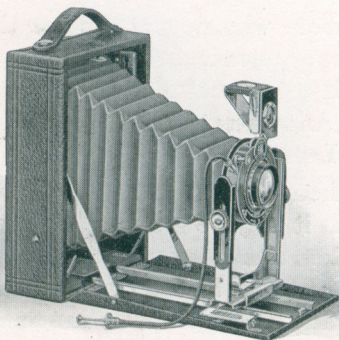
Size of picture: $2\frac{1}{4} \times 3\frac{1}{4}$. Capacity: 12 film or one plate exposure. Box: Aluminum. Bed: Aluminum, with special lever focusing device. Finder: Reversible, with revolving mask. Tripod Sockets: Two. Lens; Kodak Anastigmat, *f.* 7.7, or other lenses as per price list. Shutter: Optimo or Kodak Ball Bearing as per price list. Dimensions: $1\frac{5}{8} \times 3\frac{1}{4} \times 4\frac{5}{8}$ in. Weight: 24 ozs.

PRICES

	$2\frac{1}{4} \times 3\frac{1}{4}$
Premo No. 12 with Kodak Ball Bearing Shutter and R. R. Lens, including Film Pack Adapter and one Plate Holder	\$19.61
With Kodak Anastigmat Lens, <i>f.</i> 7.7	25.97
With Optimo Shutter and Kodak Anastigmat Lens, <i>f.</i> 6.3, $4\frac{3}{8}$ -inch focus	45.58
With B. & L. Kodak Anastigmat Lens, <i>f.</i> 6.3, $4\frac{5}{8}$ -inch focus	58.83
With B. & L. Tessar, Ser. IIb Lens, <i>f.</i> 6.3, $4\frac{5}{8}$ -inch focus	71.55
With B. & L. Tessar, Ser. Ic Lens, <i>f.</i> 4.5, $3\frac{1}{2}$ -inch focus	73.67
With B. & L. Tessar, Ser. IIb Lens, <i>f.</i> 6.3, $3\frac{3}{8}$ -inch focus, and Compound Shutter	48.76
Carrying Case, velvet lined	3.25
Single Plate Holder, each	.60
Premo Film Pack, 12 exposures	.41
Special Roll Holder, interchangeable with Plate Holder	11.00

The Prices of Camera and Film Include the Excise War Tax.

Premo No. 8



A CAMERA for the amateur who wishes to undertake more serious photographic work. Every picture made may be accurately focused and composed upon the focusing screen. The rising and falling front permits correct centering of the composition. While direct focusing is frequently desirable, it is not always convenient or possible, and the lens in such cases may be focused with the graduated scale, the picture being centered with the view finder, which is of the collapsible type.

Plates or film, whichever is most convenient or best suited to the character of the subject, can be used interchangeably. Plates are loaded into a regular Plate Holder, and by means of the Premo Adapter

Premo No. 8

and Premo Film Packs, the camera is converted into a daylight loading instrument with all the advantages of film convenience.

The shutter furnished with all models of the Premo No. 8 is a modified form of the Kodak Ball Bearing. It is graduated for speeds of 1/25, 1/50 and 1/100 seconds, as well as for bulb and time exposures.

The body of the camera is made of wood, with front bed of aluminum. The bed and body are covered with black grain leather; the bellows is black and the metal parts are finished in nickel, giving the camera a neat, attractive appearance.

SPECIFICATIONS

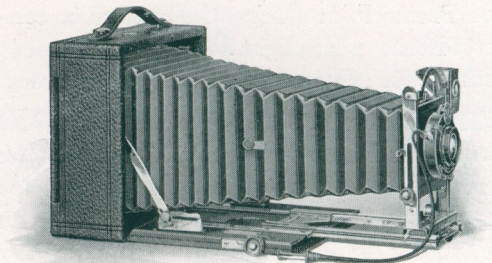
Capacity: 12 film or 2 plate exposures. Box: Kiln-dried wood, covered with leather. Standard: Made of metal, with rising and falling front. Carrying Case: Imitation leather, with compartments for holders. Finder: Reversible, brilliant, collapsible. Tripod Sockets: Two. Lens: Planatograph, Shutter: Kodak Ball Bearing with cable release (See page 20). Dimensions: $3\frac{1}{4} \times 5\frac{1}{2}$, $2 \times 5 \times 7\frac{1}{4}$ in.; 4×5 , $2 \times 5\frac{1}{4} \times 6\frac{1}{2}$ in.; 5×7 , $2\frac{1}{4} \times 6\frac{1}{2} \times 8\frac{1}{2}$ in. Weight: $3\frac{1}{4} \times 5\frac{1}{2}$, 34 ozs.; 4×5 , 30 ozs.; 5×7 , 42 ozs.

PRICES

	4x5	3A $3\frac{1}{4} \times 5\frac{1}{2}$	5x7
Premo No. 8, with Planatograph Lens, Kodak Ball Bearing Shutter Carrying Case and Plate Holder	\$21.11	\$21.11	\$29.03
With Kodak Anastigmat Lens, f. 7.7		27.47	
Premo Film Pack Adapter	2.00	2.00	3.00
Premo Film Pack (12 exposures)	.93	.83	1.65
Kodak Portrait Attachment	.50	.50	.50

The Prices of Camera and Film Include the Excise War Tax.

Premo No. 9



THIS camera is provided with the mechanical adjustments and bellows capacity essential to a wider application of photography than is possible with any of the preceding models of Premo Cameras.

SPECIFICATIONS

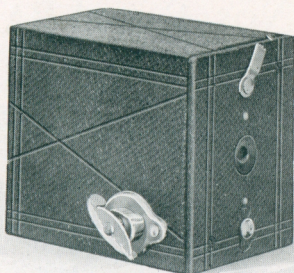
Capacity: 12 film or 2 plate exposures. Box: selected dried wood, leather covered. Bed: finished in black; rack and pinion for focusing. Back: reversible and swing. Standard: metal with rising and falling front. Finder: brilliant, reversible, collapsible. Tripod Socket: one Bellows: Black leather; draw, $3\frac{1}{4} \times 5\frac{1}{2}$, 13 in.; 4×5 , 13 in.; 5×7 , $15\frac{1}{4}$ in. Dimensions; $3\frac{1}{4} \times 5\frac{1}{2}$, $3 \times 7 \times 7$ in.; 4×5 , $3 \times 7 \times 7$ in.; 5×7 , $2\frac{7}{8} \times 8\frac{1}{4} \times 8\frac{1}{4}$ in. Weight: $3\frac{1}{4} \times 5\frac{1}{2}$, 63 ozs.; 4×5 , 63 ozs.; 5×7 , 76 ozs.

PRICES

	4x5	3A $3\frac{1}{4} \times 5\frac{1}{2}$	5x7
Premo No. 9, with Planatograph Lens, Kodak Ball Bearing Shutter Case and Holder	\$40.10	\$40.10	\$47.49
With Kodak Anastigmat Lens, <i>f</i> . 7.7	46.46	46.46	
With Kodak Anastigmat Lens, <i>f</i> . 6.3, and Optimo Shutter	68.72	68.72	
With B. & L. Kodak Anastigmat Lens, <i>f</i> . 6.3, and Optimo Shutter	81.44	84.88	110.03
Premo Film Pack Adapter	2.00	2.00	3.00
Premo Film Pack (12 exposures)93	.83	1.65
Kodak Portrait Attachment50	.50	.50

The Prices of Camera and Film Include the War Excise Tax.

Cartridge Premo No. 00



THIS little camera was made especially for the youngsters, and has proven a source of pleasure for many thousands of boys and girls throughout the country. Photography is interesting and instructive. There is not only the fun every boy and girl will find in making pictures of their companions, games, and the like, but it is helpful in developing the observation and appreciation of pictorial art.

The camera is fitted with an Automatic Shutter and first quality Meniscus Lens. It loads with a special 6 exposure cartridge, and while this is not N. C. Film, it is of the standard Eastman quality.

SPECIFICATIONS

For pictures $1\frac{1}{4} \times 1\frac{3}{4}$ inches. Capacity: 6 exposures without reloading. Size of camera: $2 \times 2\frac{5}{8} \times 3\frac{1}{8}$ in. Lens: Meniscus, $2\frac{1}{4}$ -inch focus. Shutter: Automatic for time and snap shot exposure.

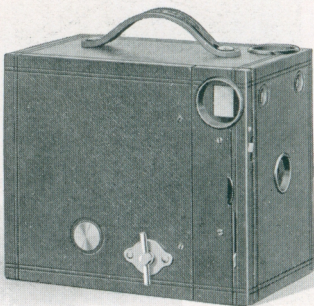
PRICES

Cartridge Premo No. 00, Meniscus Lens and Automatic Shutter	\$1.06
Eastman Film Cartridge, 6 exposures, No. 35	.11

The Prices of Camera and Film Include the Excise War Tax.

Cartridge Premos

Nos. 2 and 2A



THESE are cameras of the fixed focus type, requiring no focusing or estimating of distances. They take regular Eastman N. C. film cartridges, which may be loaded, unloaded and developed in full daylight.

The cameras are equipped with automatic shutters, working for time or "snap shot" exposures, and carefully tested lenses.

SPECIFICATIONS

For rectangular pictures, No. 2, $2\frac{1}{4} \times 3\frac{1}{4}$ in.; No. 2A, $2\frac{1}{2} \times 4\frac{1}{4}$ in. Capacity: No. 2, 6 exposures without reloading; No. 2A, 12 exposures without reloading. Size of camera: No. 2, $5\frac{5}{8} \times 4 \times 3\frac{1}{4}$ in.; No. 2A, $3\frac{7}{16} \times 5\frac{1}{8} \times 6\frac{1}{8}$ in. Weight: No. 2, 13 ozs.; No. 2A, 21 ozs. Lens: No. 2, Meniscus; No. 2A, Meniscus Achromatic. Shutter: Eastman Rotary, with three stops. Two finders.

PRICES

	No. 2	No. 2A
Cartridge Premo, as per specifications	\$2.92	\$3.71
Carrying Case, with shoulder strap	1.20	1.40
N. C. Film Cartridge, 12 exposures (No. 116)		.52
Ditto, 6 ex. (No. 120 for No. 2; No. 116 for No. 2A)	.21	.26
Kodak Portrait Attachment	.50	.50

The Prices of Camera and Film Include the Excise War Tax.

No. 2C Cartridge Premo



THE $2\frac{7}{8} \times 4\frac{7}{8}$ size is a new proportion for amateur pictures which was recently introduced.

In design it follows closely that of the 2 and 2A models, and loads with Eastman N. C. Film, offering all the advantages of day-light-all-the-way photography.

The 2C requires no focusing or estimating of distances. It is always ready for action.

SPECIFICATIONS

For rectangular pictures, $2\frac{7}{8} \times 4\frac{7}{8}$ in. Capacity: 10 exposures without reloading. Size of camera: $3\frac{7}{8} \times 6 \times 7\frac{1}{4}$ in. Weight: 25 ozs. Lens, Meniscus Achromatic, $5\frac{1}{2}$ -inch focus. Shutter: Eastman Rotary, with three stops. Two finders. Two Tripod sockets.

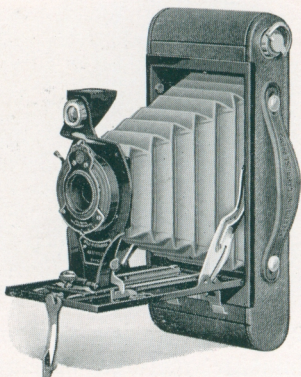
PRICES

No. 2C Cartridge Premo, Meniscus Achromatic Lens,	
Eastman Rotary Shutter	\$4.77
Carrying Case with shoulder strap	1.50
N. C. Film Cartridge, 10 exposures (No. 130)62
Ditto, 6 exposures36
Kodak Portrait Attachment50

The Prices of Camera and Film Include the Excise War Tax.

Folding Cartridge Premos

Nos. 2 and 2A



THE practical simplicity of operation, compactness and attractive appearance of the Folding Cartridge Premo will appeal to those desiring a properly equipped, inexpensive camera that meets the requirements of amateur picture making.

These Premos are constructed on a very simple principle for loading and unloading in daylight, with the Eastman N. C. Film Cartridge.

The excellent quality of the pictures produced by the Folding Cartridge Premos, combined with the ease of operation, have resulted in its being established as a most popular model.

Folding Cartridge Premos

Nos. 2 and 2A

The No. 2 is regularly fitted with a meniscus lens and the No. 0 Kodak Ball Bearing shutter. The No. 2A is regularly fitted with a meniscus achromatic lens and the No. 1 Kodak Ball Bearing Shutter without cable release. This shutter has the same actions and speeds of the No. 0 and in addition, the faster speed of 1/100 second. Both cameras are offered also with R. R. lens.

The cameras are neatly finished and covered with a serviceable, attractive grade of imitation leather. Either size will slip easily into an ordinary pocket.

SPECIFICATIONS

For rectangular pictures, No. 2 for $2\frac{1}{4} \times 3\frac{1}{4}$ pictures; No. 2A, $2\frac{1}{2} \times 4\frac{1}{4}$. Capacity: No. 2, 6 exposures without reloading; No. 2A, 12. Size of camera: No. 2, $1\frac{1}{4} \times 3\frac{1}{8} \times 6\frac{1}{2}$ in.; 2A, $1\frac{7}{16} \times 3\frac{3}{8} \times 7\frac{7}{8}$ in. Weight: No. 2, 19 ozs.; No. 2A, 25 ozs. Lens, Meniscus Achromatic. Shutter: Kodak Ball Bearing. Finder: Reversible. Tripod Sockets: two. Focusing lock: Automatic. Bellows: Black leather.

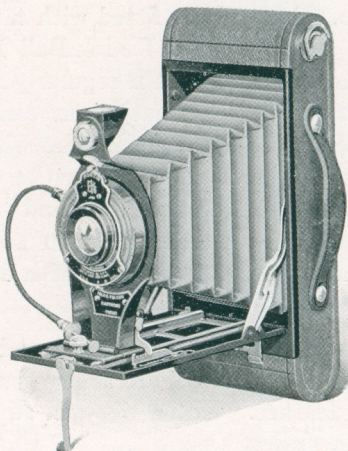
PRICES

	No. 2	No. 2A
Folding Cartridge Premo as per specifications	\$ 7.42	\$ 8.48
With R. R. Lens	9.01	10.60
Cartridge Premo Carrying Case	1.40	1.50
N. C. Film Cartridge, 12 exposures (No. 116)		.52
Ditto, 6 exposures (No. 120 for No 2, No. 116 for No. 2A)	.21	.26
Kodak Portrait Attachment	.50	.50

The Prices of Camera and Film Include the Excise War Tax.

Folding Cartridge Premos

Nos. 2C and 3A



THE success of the 2 and 2A Folding Cartridge Premos led to the introduction of two other larger models, of the same type. The No. 2C illustrated on this page, makes $2\frac{7}{8} \times 4\frac{7}{8}$ pictures. The No. 3A, similar to the 2C in every respect, excepting size, is for the popular $3\frac{1}{4} \times 5\frac{1}{2}$ (post card) pictures.

Made of first quality material, by high class workmen, these cameras receive the same rigid tests for reliability as are applied to all Eastman products.

Folding Cartridge Premos

Nos. 2C and 3A

The box is made of aluminum, which means strength and light weight. The lens standard is so formed as to be unusually rigid. All metal parts are finished in nickel and black enamel. The covering is of a substantial grade of imitation leather. A reversible finder and two tripod sockets are provided. The automatic focusing lock permits setting the lens quickly and positively for any distance.

The cameras load with standard Eastman N. C. film. This is not only an assurance of the quality of the results to be obtained, but means that every process—loading, unloading, developing—can be performed in daylight, eliminating the dark room entirely.

SPECIFICATIONS

For Rectangular Pictures, No. 2C, $2\frac{7}{8} \times 4\frac{7}{8}$ in.; No. 3A, $3\frac{1}{4} \times 5\frac{1}{2}$ in. Capacity: 10 exposures without reloading. Size of camera: No. 2C, $1\frac{3}{4} \times 3\frac{3}{16} \times 8\frac{5}{8}$ in.; No. 3A, $1\frac{3}{4} \times 4\frac{5}{16} \times 9\frac{5}{16}$ in. Weight: No. 2C, 28 ozs.; No. 3A, 28 ozs. Lens. Meniscus Achromatic; focus, No. 2C, 5-inch; No. 3A, $5\frac{3}{8}$ -inch: Also supplied with Rapid Rectilinear Lens, if desired. Shutter: Kodak Ball Bearing. Finder: Reversible. Tripod Sockets: two. Focusing Lock: Automatic. Bellows: Black Leather.

PRICES

	No. 2C	No. 3A
Folding Cartridge Premo as per specifications	\$11.13	\$12.19
Ditto, with R. R. Lens	13.25	14.84
Cartridge Premo Carrying Case	1.55	1.65
N. C. Film Cartridge, 10 exposures (No. 130 for No. 2C, No. 122 for 3A)62	.72
Ditto, 6 exposures36	.41
Kodak Portrait Attachment50	.50

The Prices of Camera and Film Include the Excise War Tax.

Kodak Ball Bearing Shutter

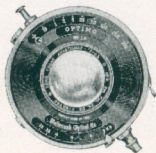
THIS shutter does not require setting.

It is automatically operated by cable or finger release. The illustration shows the shutter as fitted to cameras equipped with Kodak Anastigmat lens, *f.* 7.7, but all models work upon the same general system. The model regularly fitted to Premoette Jr. No. 1 and Folding Cartridge Premo No. 2 has time and bulb actions and indicated speeds of 1/25 and 1/50 second. It has no cable release.



The models supplied with Folding Cartridge Premos No. 2A, 2C, 3A, Premoette Senior, Premo Nos. 8 and 9 have the same speeds as the No. 0 and in addition the higher speed of 1/100 second.

Optimo Shutter



This shutter of the setting type leaves opening in star shape and besides time and bulb exposure actions, has variable indicated speeds of 1, 1/2, 1/5, 1/25, 1/50, 1/100, 1/200 and 1/300 seconds.

Premo Film Packs



PREMO Film Packs contain 12 exposures of Eastman N. C. Speed Film, which is non-curling, non-halation, and properly orthochromatic. The gradation and fineness of grain is of the highest quality.

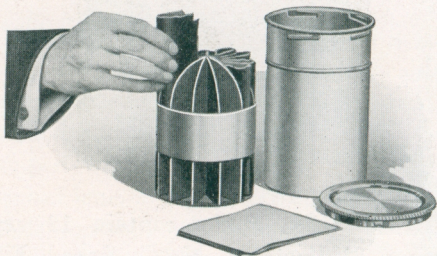
The Premo Film Pack provides the easiest and quickest means for loading the camera in daylight, and changing film.

The Premo Film Pack Adapter permits the use of Film Packs with plate cameras.

One or more exposures may be removed from the pack at any time, and developed automatically in the Premo Film Pack Tank.

Size	Price per Pack
1 3/4 x 2 3/8, No. 300	\$.26
2 1/4 x 3 1/4, No. 320	.41
2 1/2 x 4 1/4, No. 316	.52
3 1/4 x 4 1/4, No. 318	.72
3 x 5 1/4, No. 342	.78
3 1/4 x 5 1/2, No. 322	.83
4 x 5, No. 323	.93
5 x 7, No. 315	1.65

Premo Film Pack Tank

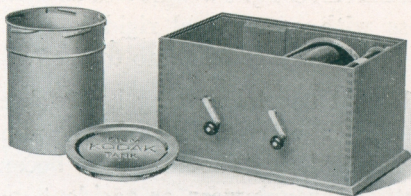


FOR the amateur who wishes to do his own work, the difficulties and uncertainties of development are entirely removed by the Premo Film Pack Tank. The tank method of development is automatic and scientifically exact. If instructions are followed, anyone may obtain perfectly developed negatives. The tank is so compact that it may easily be carried in a suit-case.

PRICES

Premo Film Pack Tank No. 1, for 12 $1\frac{3}{4}$ x $2\frac{3}{8}$ or $2\frac{1}{4}$ x $3\frac{1}{4}$ films	\$1.75
Ditto, No. 2, for 12 $2\frac{1}{2}$ x $4\frac{1}{4}$, $3\frac{1}{4}$ x $4\frac{1}{4}$, 3 x $5\frac{1}{4}$, $3\frac{1}{4}$ x $5\frac{1}{2}$ or 4 x 5 films	4.00
Ditto, for No. 3 6 5 x 7 films	4.50
Premo Tank Developing Powders, in packages of 6, No. 1	.20
Premo Tank Developing Powders, in packages of 6, No. 2	.25
Premo Tank Developing Powders, in packages of 6, No. 3	.35
Kodak Acid Fixing Powder, per 1 pound package	.25
Ditto, per $\frac{1}{2}$ pound package	.15
Ditto, per $\frac{1}{4}$ pound package	.10

Kodak Film Tank



THE Kodak Film Tank not only develops roll film automatically but it does it in broad daylight, eliminating the necessity for a dark room during any part of the photographic process. The time and temperature method of development is not only the most convenient, but is superior to the old methods.

PRICES

Brownie Kodak Film Tank, for use with No. 2 and No. 2 Folding Cartridge Premo cartridges, complete	\$3.00
Cover for same25
2½-inch Kodak Film Tank, for use with all cartridges having a film width of 2½ inches or less, complete	4.00
3½-inch Kodak Film Tank, for use with all Kodak and Brownie cartridges having a film width of 3½ inches or less, complete	5.50
Flexible Rubber Tray, for 3½-inch Kodak Film Tank	2.00
Kodak Tank Developer Powders for Brownie Kodak Film Tank, per package ½ dozen15
Ditto, for 2½-inch tank, per package, ½ dozen20
Ditto, for 3½-inch tank, per package, ½ dozen20

The Kodak Metal Tripod

COMBINING light weight and compactness with exceptional rigidity, this is an ideal tripod for cameras up to 5 x 7.

The tripod has telescoping legs of brass tubing—lower sections nickered—the upper black enameled, and should a part become inoperative through wear or accident, any section may be removed for repairs.

The Nos. 1 and 2 have revolving heads, permitting the required adjustment of the camera without moving the tripod.

	Closed in.	Extended in.	Weight ozs.	Price
Kodak Metal Tripod,				
No. 0, 3 sections .	15½	39½	15	\$2.75
No. 1, 4 sections .	15	48½	24½	4.00
No. 1C, 4 sections	15¼	48⅞	25½	3.75
No. 2, 5 sections .	13½	49½	25	4.50
No. 2C, 5 sections	13¾	49⅞	26	4.25
No. 6, 6 sections .	11⅜	40	24	6.50
Leatherette Case for No. 0 or No. 1 .				1.00
Leather carrying case for No. 0, 1 or 2 .				2.50
Ditto, for No. 6 .				3.00
Rubber Tips for use indoors for any size, per set of 3 .				.10

Premo Film Pack Adapters

Size	Price
2¼ x 3¼	\$1.50
3¼ x 4¼	1.50
3 x 5¼	2.00
3A (3¼ x 5½)	2.00
4 x 5	2.00
5 x 7	3.00

ROCHESTER OPTICAL DEPARTMENT

EASTMAN KODAK COMPANY

ROCHESTER, N. Y.

1919

WALSH & CUMMINGS

955 ELM ST.

MANCHESTER, N. H.