



KODAK



When? Where? *and the answer*

THERE are no pictures more interesting than those that record the growth and change of the child—interesting alike to parents and to the children themselves, when they have outgrown childhood. And always such pictures provoke the query—How old was he then? When was it made? The date is half the interest. We know the picture of John with his hair bobbed was made before the one where his hair is cut like a real man's, but we want to know how long before. Good as the picture is, the story ends with a question mark—*when?*

With an autographic Kodak or Brownie and autographic film it's the work of but a moment to write the date on the film at the time of exposure.

The date gives each picture added interest and the Kodak album with pictures of Betty and John and Mary becomes a picture record of childhood so complete, so authentic and so satisfying that one never tires of turning the pages and watching the children grow up.

And so it is in travel and vacation pictures—the autographed title marks the “where?” while the date settles for all time the question of “when?”

There is no extra charge for autographic film and all Kodaks and Folding Brownies, as you will note in the following pages are “Autographic.”

The autographic feature is *exclusively* Eastman.

EASTMAN KODAK COMPANY ROCHESTER, N. Y.

A complete catalog—describing all amateur goods in the Kodak line—may be obtained at your dealer's, or by writing to the Company.

November, 1921

A circular graphic of a Kodak Anastigmat lens is positioned behind the text. The lens has "KODAK ANASTIGMAT" written around its inner edge. The focal lengths are written in a stylized script across the lens.

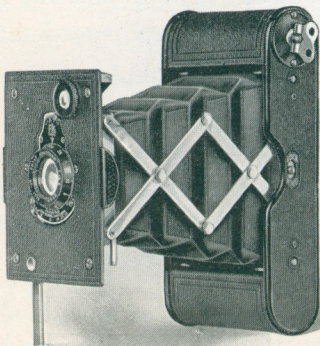
The **KODAK**
ANASTIGMAT
f.7.7 f.6.3 and f.4.5

ALL the Kodaks described on the following pages may be secured with Kodak Anastigmat lens—the lens for better pictures. And the increase in cost over ordinary equipment is moderate.

The Kodak Anastigmat lens is Eastman-made throughout to exactly meet every requirement of the camera on which it is fitted. At its indicated speed, the Kodak Anastigmat is at least the equal of any anastigmat—regardless of price.

Vest Pocket Autographic **KODAK Special** (Focusing Model)

THIS new model retains the compactness and efficiency of the Vest Pocket Kodak, and that the full value of the high-quality lens, Kodak Anastigmat *f.6.9*, may be realized, adds a new and convenient focusing device. By a slight turn of the lens flange the focus is changed for ten indicated distances—from 3 to 100 feet—from “close-ups” without a Portrait Attachment to distant landscapes.



If it isn't an EASTMAN, it isn't a KODAK

Details

Size of pictures: $1\frac{5}{8} \times 2\frac{1}{2}$ inches.

Size of Kodak: $1 \times 2\frac{3}{8} \times 4\frac{3}{4}$ inches.

Capacity without reloading: 8 exposures.

Weight: 11 ounces.

Adjustable focus.

Lens: Kodak Anastigmat, $f.6.9$, $3\frac{1}{2}$ -inch focus.

Kodak Ball Bearing Shutter No. 0 with finger release only (cable release attachment sold separately).

Speeds: $1/25$, $1/50$ second, and time and "bulb" actions.

Brilliant finder; reversible for vertical or horizontal pictures.

All metal body covered with pin-grain Morocco.

Metal parts finished in nickel and black enamel.

Black Bellows.

Autographic feature.

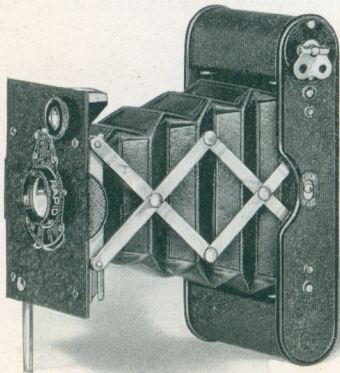
Prices

Vest Pocket Autographic Kodak <i>Special</i> (focusing model), Kodak Anastigmat lens, $f.6.9$, and Kodak Ball Bearing shutter	\$21.00
Leather Case for V. P. Kodak	1.00
Soft Leather Carrying Bag	2.00
Grain Leather Case	1.50
Belt Carrying Case (russet leather)	1.50
Khaki Belt Carrying Case75
Autographic Film Cartridge, 8 exposures, (No. A 127)25
Vest Pocket Cable Release Attachment50
Vest Pocket Kodak Tripod Adapter50
Kodak Self-Timer (see page 32)	1.25

The prices of cameras and film include the Excise War Tax

Vest Pocket *Autographic KODAKS* (Fixed Focus Models)

THE Vest Pockets are the most convenient of the Kodaks—there's always room for them. When closed they slip easily into a man's vest pocket—they are no larger than the palm of a woman's hand. The wonder of it is that such a little camera can make such really splendid pictures—and that's a tribute to Kodak workmanship. There are two models—Regular and *Special*—three types of lenses, including the Eastman-made Kodak Anastigmat.



If it isn't an EASTMAN it isn't a KODAK

Details

Size of pictures: $1\frac{5}{8} \times 2\frac{1}{2}$ inches.

Size of Kodak: $1 \times 2\frac{3}{8} \times 4\frac{3}{4}$ inches.

Capacity without reloading: 8 exposures.

Weight: 11 ounces.

Lenses: *Regular*: Fixed focus only; Meniscus Achromatic or Rapid Rectilinear, $3\frac{1}{2}$ -inch focus. *Special*: Fixed focus models: Kodak Anastigmat, *f*.7.7, $3\frac{1}{2}$ -inch focus.

Kodak Ball Bearing Shutter No. 0 with finger release only (cable release attachment sold separately).

Speeds: $1/25$, $1/50$ second, and time and "bulb" actions.

Brilliant finder; reversible for vertical or horizontal pictures.

All metal body. *Regular*: Finished in stamped figured design. *Special*: covered with pingrain Morocco.

Metal parts finished in nickel and black enamel.

Black Bellows. Autographic feature.

Prices

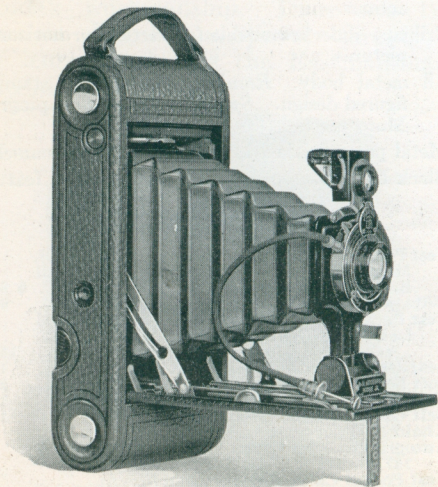
Vest Pocket Autographic Kodak (regular model), Meniscus Achromatic lens and Kodak Ball Bearing shutter	\$ 8.00
Ditto, with Rapid Rectilinear lens, speed U. S. 8	9.50
Vest Pocket Autographic Kodak, <i>Special</i> , (fixed focus model), Kodak Anastigmat lens, <i>f</i> .7.7, and Kodak Ball Bearing shutter	15.00
Leather Case for V. P. Kodak	1.00
Soft Leather Carrying Bag	2.00
Grain Leather Case	1.50
Belt Carrying Case (russet leather)	1.50
Khaki Belt Carrying Case75
Autographic Film Cartridge , 8 exposures (No. A 127)25
Vest Pocket Cable Release Attachment50
Vest Pocket Kodak Tripod Adapter50
Kodak Portrait Attachment (see page 32)75
Kodak Self-Timer (see page 32).	1.25

The prices of cameras and film include the Excise War Tax

Nos. 1 and 1A Autographic
KODAK Juniors

EVERY necessity for good picture-making is conspicuously present—photographic flourishes are conspicuously absent. The result is a high grade camera, simple in operation, neat in appearance and moderate in price—a Junior.

There is a choice of lens equipment, including the Kodak Anastigmat *f.7.7*.



No. 1A Jr. MODEL

If it isn't an EASTMAN, it isn't a KODAK

Details

Size of pictures: No. 1, $2\frac{1}{4} \times 3\frac{1}{4}$ inches. No. 1A, $2\frac{1}{2} \times 4\frac{1}{4}$ inches.

Size of Kodak: No. 1, $1\frac{7}{16} \times 3\frac{5}{8} \times 6\frac{5}{8}$ inches; No. 1A, $1\frac{5}{8} \times 3\frac{3}{4} \times 8$ inches.

Capacity: No. 1, 6 exp.; No. 1A, 12 exp.

Weight: No. 1, $21\frac{1}{2}$ oz.; No. 1A, $27\frac{1}{2}$ oz.

Focus: Fixed (with Meniscus Achromatic lens only); or Adjustable (with any listed lens).

Lenses: Meniscus Achromatic; Rapid Rectilinear; No. 1, $4\frac{1}{4}$ -inch focus, No. 1A, $5\frac{1}{4}$ -inch focus; or Kodak Anastigmat, *f.7.7*, No. 1, 4-inch focus, No. 1A, $5\frac{1}{4}$ -inch focus.

Kodak Ball Bearing Shutter with cable and finger release.

Speeds: No. 1, $1/25$, $1/50$ second; with Kodak Anastigmat *f.7.7* lens, $1/25$, $1/50$ and $1/100$ second; No. 1A, $1/25$, $1/50$ and $1/100$ second. Both with time and "bulb" actions.

Brilliant finder; reversible for vertical or horizontal pictures. Tripod Sockets.

Body covered with grain leather.

Metal parts finished in nickel and black enamel.

Black Bellows. Autographic feature.

Prices

	No. 1 Jr.	No. 1A Jr.
Autographic Kodak Junior (fixed focus) Meniscus Achromatic lens and Kodak Ball Bearing shutter	\$15.00	\$16.00
Autographic Kodak Junior (focusing model, with scale), Meniscus Achro- matic lens and Kodak Ball Bearing shutter	15.00	16.00
Ditto, with Rapid Rectilinear lens	17.00	18.00
Ditto, with Kodak Anastigmat lens <i>f.7.7</i>	22.00	23.00
Black Sole Leather Case , with strap	4.00	4.00
Soft Leather Bag , with strap	2.75	3.00
Leatherette Carrying Case , with strap	2.50	2.50
Autographic Film Cartridge , 12 expos- ures (No. A116) for No. 1A.60
Ditto, 6 exposures (No. A 120) for No. 1; (No. A116) for No. 1A25	.30
Kodak Portrait Attachment (see p. 32)75	.75
Kodak Self-Timer (see page 32).	1.25	1.25

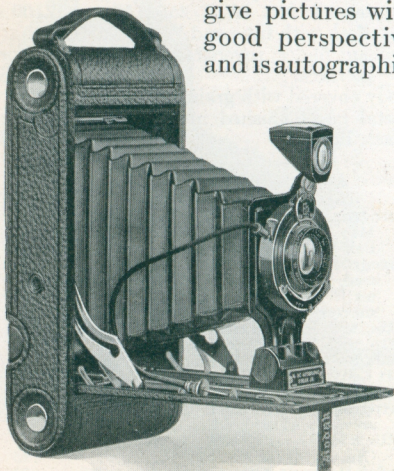
The prices of cameras and film include the Excise War Tax

No. 2C Autographic

KODAK Junior

THE 2C makes a picture that has post-card proportions—and is just short of post-card size, $2\frac{7}{8}'' \times 4\frac{7}{8}''$ —a shape and size permitting pleasing composition for either vertical or horizontal pictures. We were so sure about the general all-round ability of this model with its Kodak Anastigmat $f.7.7$ lens equipment, that we made it the most heavily advertised camera in the world. You have read about it.

It is compact, has ample focal length to give pictures with good perspective and is autographic.



If it isn't an EASTMAN, it isn't a KODAK

Details

Size of pictures: $2\frac{7}{8} \times 4\frac{7}{8}$ inches.

Size of Kodak: $1\frac{3}{4} \times 4\frac{3}{8} \times 8\frac{3}{4}$ inches.

Capacity without reloading: 10 exposures.

Weight: 34 ounces.

Adjustable focus only; with automatic focusing lock.

Lenses: Meniscus Achromatic; Rapid Rectilinear, $5\frac{1}{2}$ -inch focus; or Kodak Anastigmat, *f*.7.7, $5\frac{1}{2}$ -inch focus.

Kodak Ball Bearing Shutter, with cable and finger release.

Speeds: $1/25$, $1/50$ and $1/100$ second, and time and "bulb" actions.

Brilliant finder; reversible for vertical or horizontal pictures.

Back and bed of aluminum; covered with fine seal grain leather.

Metal parts finished in nickel and black enamel.

Black Bellows. Autographic feature.

Two Tripod Sockets.

Prices

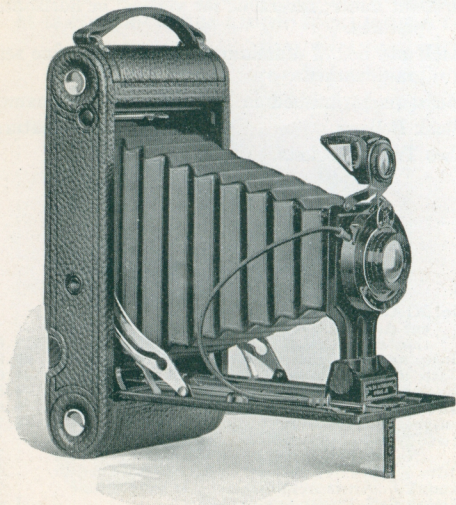
No. 2C Autographic Kodak Junior, with Meniscus Achromatic lens and Kodak Ball Bearing shutter	\$18.00
Ditto, with Rapid Rectilinear lens	20.00
Ditto, with Kodak Anastigmat, <i>f</i> .7.7 lens	25.00
Black Sole Leather Case, with strap	4.50
Soft Leather Carrying Bag, with strap	3.25
Leatherette Carrying Case, with strap	2.75
Autographic Film Cartridge, 10 exposures (No. A 130)75
Ditto, 6 exposures45
Kodak Portrait Attachment (see page 32)75
Kodak Self-Timer (see page 32)	1.25

The prices of cameras and film include the Excise War Tax

No. 3^A Autographic

KODAK Junior

NO other size of picture has yet gained the approval of the amateur as has the 3A size ($3\frac{1}{4}'' \times 5\frac{1}{2}''$)—the size that's standard. The pictures are large enough to give satisfying detail, yet the negatives are of the right quality and the proportions especially suited for the making of attractive enlargements.



If it isn't an EASTMAN, it isn't a KODAK

Details

Size of pictures: $3\frac{1}{4} \times 5\frac{1}{2}$ inches.

Size of Kodak: $1\frac{15}{16} \times 5\frac{1}{8} \times 9\frac{3}{4}$ inches.

Capacity without reloading: 10 exposures.

Weight: 37 ounces.

Adjustable focus only; with automatic focusing lock.

Lenses: Meniscus Achromatic; Rapid Rectilinear,
 $6\frac{3}{4}$ -inch focus; or Kodak Anastigmat, *f.7.7*,
 $6\frac{3}{4}$ -inch focus.

Kodak Ball Bearing Shutter No. 2, with cable and
finger release.

Speeds: $1/25$, $1/50$ and $1/100$ second, and time
and "bulb" actions.

Brilliant finder; reversible for vertical or horizontal
pictures.

Back and bed of aluminum, covered with fine seal
grain leather.

Metal parts finished in nickel and black enamel.

Black Bellows.

Autographic feature.

Two Tripod Sockets.

Prices

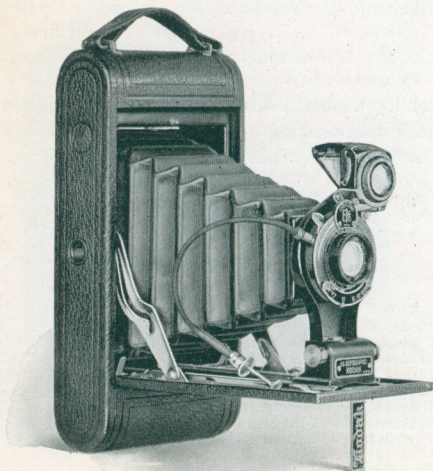
No. 3A Autographic Kodak Junior, with Meniscus Achromatic lens	\$19.00
Ditto, with Rapid Rectilinear lens	22.00
Ditto, with Kodak Anastigmat lens, <i>f.7.7</i>	27.00
Black Sole Leather Carrying Case, with strap	4.75
Soft Leather Carrying Bag	4.00
Leatherette Carrying Case, with strap	2.75
Autographic Film Cartridge, 10 exposures (No. A 122)90
Ditto, 6 exposures55
Kodak Portrait Attachment, (see page 32)75
Kodak Self-Timer (see page 32)	1.25

The prices of cameras and film include the Excise War Tax

No. 1^A Autographic

KODAK

THE notable features of this "Regular" are high quality of materials, workmanship, finish and design. The compactness, the thorough attention to every detail of its construction and the simplicity with which it operates, make the No. 1A Kodak a desirable companion for the discerning.



If it isn't an EASTMAN, it isn't a KODAK

Details

Size of pictures: $2\frac{1}{2} \times 4\frac{1}{4}$ inches.

Size of Kodak: $1\frac{5}{8} \times 3\frac{3}{4} \times 8$ inches.

Capacity without reloading: 12 exposures.

Weight: 27 ounces.

Adjustable focus only, with automatic focusing lock.

Lenses: Rapid Rectilinear, $5\frac{1}{4}$ -inch focus; or
Kodak Anastigmat, $f.7.7$, $5\frac{1}{4}$ -inch focus.

Kodak Ball Bearing Shutter, with cable and finger release.

Speeds: $1/25$, $1/50$ and $1/100$ second, and time, and "bulb" actions.

Brilliant finder; reversible for vertical or horizontal pictures.

Back and bed of aluminum, covered with fine seal grain leather.

Metal parts finished in nickel and black enamel.

Black leather bellows. Autographic feature.

Two Tripod Sockets.

Prices

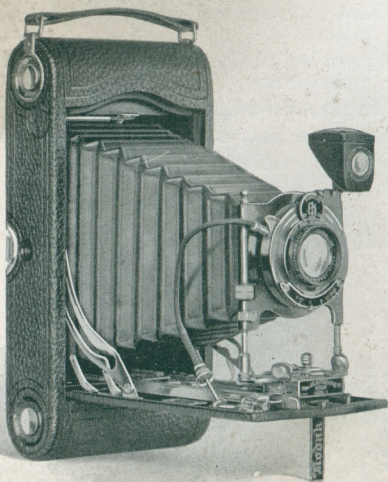
No. 1A Autographic Kodak, with Rapid Rectilinear lens and Kodak Ball Bearing shutter	\$23.00
Ditto, with Kodak Anastigmat lens, $f.7.7$	28.00
Black Sole Leather Case, with strap	4.00
Soft Leather Carrying Bag, with strap	3.00
Leatherette Carrying Case, with strap	2.50
Autographic Film Cartridge, 12 exposures (No. A116)	.60
Ditto, 6 exposures	.30
Kodak Portrait Attachment (see page 32)	.75
Kodak Self-Timer (see page 32)	1.25

The prices of cameras and film include the Excise War Tax

Nos. 3 and 3^A

Autographic KODAKS

IN every feature of their construction and design the aim has been to make these cameras as complete as the most advanced amateur could wish, yet so simple and easy to operate that even the novice can get good pictures from the start.



NO. 3A MODEL

If it isn't an EASTMAN, it isn't a KODAK

Details

Size of pictures: No. 3, $3\frac{1}{4} \times 4\frac{1}{4}$ inches; No. 3A, $3\frac{1}{4} \times 5\frac{1}{2}$ inches.

Size of Kodak: No. 3, $1\frac{3}{4} \times 4\frac{1}{2} \times 7\frac{1}{2}$ inches; No. 3A, $2 \times 4\frac{3}{4} \times 9\frac{1}{2}$ inches.

Capacity without reloading: No. 3, 12 exposures; No. 3A, 10 exposures.

Weight: No. 3, 30 ounces; No. 3A, 41 ounces.

Adjustable focus only, with automatic focusing lock. No. 3A, has double focusing scale for films or plates.

Rising, falling and sliding fronts.

Lenses: Rapid Rectilinear, No. 3, $5\frac{1}{4}$ -inch focus; No. 3A, $6\frac{1}{2}$ -inch focus; Kodak Anastigmat, *f.7.7*, No. 3, $5\frac{1}{4}$ -inch focus; No. 3A, $6\frac{1}{2}$ -inch focus.

Kodak Ball Bearing Shutter, with cable and finger release.

Speeds: $1/25$, $1/50$ and $1/100$ second, and time and "bulb" actions.

Brilliant finder; reversible for vertical or horizontal pictures.

Back and bed of aluminum, covered with fine seal grain leather.

Metal parts finished in nickel and black enamel.

Black leather bellows. Autographic feature.

Two Tripod Sockets.

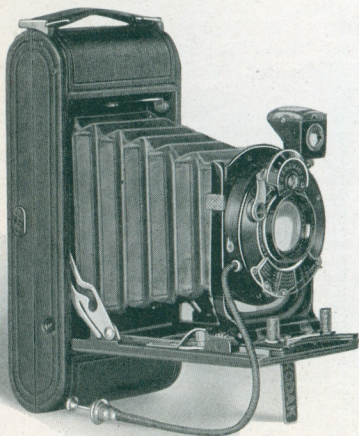
Prices

	No. 3	No. 3A
Autographic Kodak, Rapid Rectilinear lens, Kodak Ball Bearing shutter . . .	\$23.00	\$27.00
Ditto with Kodak Anastigmat lens, <i>f.7.7</i> . . .	28.00	32.00
Black Sole Leather Case, with strap . . .	4.00	4.75
Soft Leather Carrying Bag	3.25	4.00
Leatherette Carrying Case, with strap . . .	2.50	2.75
Combination Back, for plates	4.00	4.00
Kodak Double Plate Holders, each	1.50	1.50
Autographic Film Cartridges, 12 exposures (No. A118) for No. 3; 10 exposures (No. A122) for No. 3A90	.90
Ditto, 6 exposures45	.55
Kodak Portrait Attachment (see p. 32)75	.75
Kodak Self-Timer (see page 32).	1.25	1.25

The prices of cameras and film include the Excise War Tax

No. 1 Autographic KODAK Special

SPECIAL Kodaks, in addition to the special quality of materials which enter into their manufacture, have fast lenses and shutters which equip them for the entire range of pictures in the hand camera field. The No. 1 is a gem of compactness and efficiency. Its regular equipment includes the Kodamatic Shutter and the Kodak Anastigmat lens *f.6.3*—both Kodak products of the highest quality.



If it isn't an EASTMAN, it isn't a KODAK

Details

- Size of pictures: $2\frac{1}{4} \times 3\frac{1}{4}$ inches.
 Size of Kodak: $1\frac{5}{16} \times 3\frac{1}{16} \times 6\frac{7}{16}$ inches.
 Capacity without reloading: 6 exposures.
 Weight: 15 ounces.
 Adjustable focus only.
 Lenses: For details, see price heading below.
 Kodamatic or Ilex Shutter, with cable release.
 Kodamatic speeds—Seven, from $1/200$ to $1/2$ second and time and “bulb” actions.
 Brilliant finder: reversible for vertical or horizontal pictures.
 Aluminum body covered with finest quality long-grain calf.
 Metal parts finished in nickel and black enamel.
 Black leather bellows. Autographic feature.
 Two Tripod Sockets.

Prices

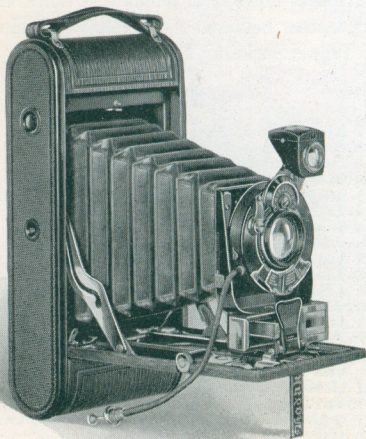
No. 1 Autographic Kodak, <i>Special</i>, with Kodak Anastigmat <i>f</i>.6.3 lens, $4\frac{1}{2}$-inch focus and Kodamatic shutter	\$50.00
Ditto, with Ilex shutter	45.00
No. 1 Autographic Kodak, <i>Special</i>, with Bausch & Lomb Kodak Anastigmat <i>f</i>.6.3 lens No. 1, $4\frac{1}{2}$-inch focus, and Kodamatic shutter	67.00
Ditto, with Ilex shutter	62.00
No. 1 Autographic Kodak, <i>Special</i>, with Bausch & Lomb Tessar Series IIb. <i>f</i>.6.3 lens No. 3, $4\frac{1}{2}$-inch focus, and Kodamatic shutter	79.00
Ditto, with Ilex shutter	74.00
No. 1 Autographic Kodak, <i>Special</i>, with Bausch & Lomb Tessar Series Ic <i>f</i>.4.5 lens No. 12, $3\frac{1}{2}$-inch focus, and Kodamatic shutter	79.00
Ditto, with Ilex shutter	74.00
Long Grain Leather, Velvet Lined Case, with strap	4.50
Autographic Film Cartridge, 6 exposures, (No. A 120)25
Kodak Portrait Attachment, (see page 32)75
Kodak Self-Timer, (see page 32)	1.25

The prices of cameras and film include the Excise War Tax

No. 1^A Autographic KODAK Special

A HIGH-SPEED lens and shutter in a high-grade camera—that's the 1A *Special*, a camera *de luxe* of the Kodak line.

The Kodak Range Finder is an integral part of the instrument, while the regular equipment includes the Kodak Anastigmat lens *f*.6.3 and Kodamatic shutter. Finish and design offer a rich setting for this quality equipment.



If it isn't an EASTMAN, it isn't a KODAK

Details

- Size of pictures: $2\frac{1}{2} \times 4\frac{1}{4}$ inches.
 Size of Kodak: $1\frac{5}{8} \times 3\frac{3}{4} \times 8$ inches.
 Capacity without reloading: 12 exposures.
 Weight: 34 ounces.
 Adjustable focus, with Kodak Range Finder and rack and pinion for focusing; also regular focusing scale.
 Lenses: For details, see price heading below.
 Kodamatic, Ilex or Optimo Shutter with cable and finger release. Kodamatic speeds—Seven, from $1/200$ to $1/2$ second and time and “bulb” actions.
 Brilliant finder; reversible for vertical or horizontal pictures.
 Aluminum body covered with finest long-grain calf.
 Metal parts finished in nickel and black enamel.
 Black leather bellows. Autographic feature

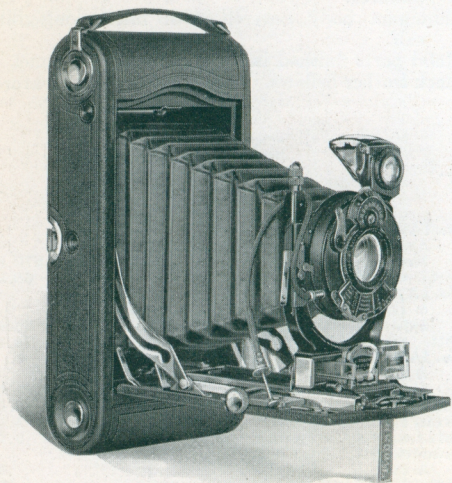
Prices

No. 1A Autographic Kodak, <i>Special</i>, with Kodak Anastigmat, <i>f.6.3</i> lens, 5-inch focus, and Kodamatic Shutter	\$70.00
Ditto, with Ilex or Optimo Shutter	65.00
No. 1A Autographic Kodak, <i>Special</i>, with Bausch & Lomb Kodak Anastigmat <i>f.6.3</i> lens No. 2, $5\frac{1}{4}$-inch focus, and Kodamatic Shutter	83.00
Ditto, with Ilex or Optimo Shutter	78.00
No. 1A Autographic Kodak, <i>Special</i>, with Bausch & Lomb Tessar Series IIb <i>f.6.3</i> Lens No. 4, $5\frac{1}{4}$-inch focus, and Kodamatic Shutter	91.00
Ditto, with Ilex or Optimo Shutter	86.00
Grain Leather, Velvet-lined Case, with strap	5.00
Soft Leather Carrying Bag	3.00
Autographic Film Cartridge, 12 exposures (No. A 116)60
Ditto 6 exposures30
Kodak Portrait Attachment, (see page 32)75
Kodak Self-Timer, (see page 32)	1.25

The prices of cameras and film include the Excise War Tax

Nos. 3 and 3^A Autographic KODAKS *Special*

THE 3 and 3^A *Specials* top the line. They represent the nearest approach to perfection in hand camera craftsmanship. With high-grade, high-speed anastigmat lenses, dependably accurate shutters, exquisite workmanship and smart design the *Specials* constitute the Kodak peerage.



NO. 3A MODEL

If it isn't an EASTMAN, it isn't a KODAK

Details

Pictures: No. 3, $3\frac{1}{4} \times 4\frac{1}{4}$ in.; No. 3A, $3\frac{1}{4} \times 5\frac{1}{2}$ in.
 Size of Kodak: No. 3, $1\frac{7}{8} \times 4\frac{1}{2} \times 8$ inches; No. 3A, $2 \times 4\frac{3}{4} \times 9\frac{1}{2}$ inches.

Capacity: No. 3—12, No. 3A—10 exposures.

Weight: No. 3, 32 ounces; No. 3A, 42 ounces.

Adjustable focus, with rack and pinion for focusing, also regular focusing scale; No. 3 also equipped with spirit level; No. 3A, with Kodak Range Finder. Cable release.

Rising and falling front. Autographic feature.

Lenses and shutters: For details, see Price heading.

Kodamatic shutter—Seven speeds, No. 3— $1/200$ to $1/2$ second; No. 3A— $1/150$ to $1/2$ second.

Brilliant reversible finder. Two tripod sockets.

Aluminum body covered with Morocco.

Prices

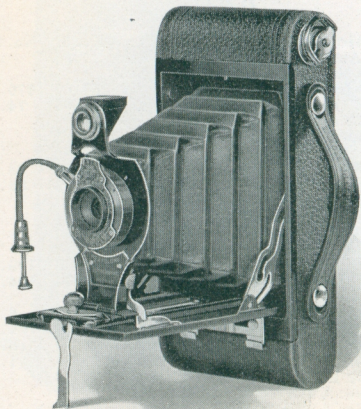
	No. 3	No. 3A
Autographic Kodak, <i>Special</i>, with		
Kodak Anastigmat <i>f.6.3</i> , lens, 5-inch focus on No. 3; $6\frac{3}{4}$ -inch focus on No. 3A; and Kodamatic Shutter	\$60.00	\$79.00
Ditto, with Ilex or Optimo Shutter	55.00	74.00
Ditto, with Bausch & Lomb Kodak Anastigmat <i>f.6.3</i> lens No. 2— $5\frac{1}{4}$ -inch focus on No. 3; lens No. 4— $6\frac{3}{4}$ -inch focus on No. 3A; and Kodamatic Shutter	75.00	98.00
Ditto, with Ilex or Optimo Shutter	70.00	93.00
Ditto, with Bausch & Lomb Tessar Series IIb Anastigmat <i>f.6.3</i> lens No. 4— $5\frac{1}{4}$ -inch focus on No. 3; lens No. 5K— $7\frac{1}{4}$ -inch focus on No. 3A; and Kodamatic Shutter	86.00	109.50
Ditto, with Ilex or Optimo Shutter	81.00	104.50
Grain Leather, Velvet-Lined Case,		
with strap	5.00	6.00
Soft Leather Carrying Bag	3.25	4.00
Combination Back	4.50	5.00
Kodak Double Plate Holders, each	1.50	1.50
Autographic Film Cartridge, 12 exposures (No. A 118) for No. 3; 10 exposures (No. A 122) for No. 3A90	.90
Ditto, 6 exposures45	.55
Kodak Portrait Attachment, (see p. 32)	.75	.75
Kodak Self-Timer, (see page 32)	1.25	1.25

The prices of cameras and film include the Excise War Tax

Nos. 2 and 2^A Folding Autographic BROWNIES

WHILE they fold like Kodaks, and work like Kodaks their extreme simplicity of operation is a thoroughly Brownie trait. Light in weight, compact in construction and attractive in appearance, the Folding Brownies are reliable instruments that are ready for results.

Made in Kodak factories by Kodak workmen—and autographic.



THE NO. 2

EASTMAN-designed and EASTMAN-made

Details

- Size of pictures: No. 2, $2\frac{1}{4} \times 3\frac{1}{4}$ inches;
 No. 2A, $2\frac{1}{2} \times 4\frac{1}{4}$ inches.
- Size of camera: No. 2, $1\frac{1}{4} \times 3\frac{1}{8} \times 6\frac{1}{2}$ inches;
 No. 2A, $1\frac{7}{16} \times 3\frac{3}{8} \times 7\frac{7}{8}$ inches.
- Capacity without reloading: No. 2, 6 exposures;
 No. 2A, 12 exposures.
- Weight: No. 2, 19 ounces; No. 2A, $25\frac{1}{2}$ ounces.
- Adjustable focus, with automatic focusing lock.
- Lenses: Meniscus Achromatic; or Rapid Rectilinear: No. 2, $3\frac{3}{4}$ -inch focus; No. 2A, 5-inch focus.
- Kodak Ball Bearing Shutter with Autotime Scale and cable and finger release.
- Speeds: No. 2, $1/25$ and $1/50$ second; No. 2A, $1/25$, $1/50$ and $1/100$ second, with time and "bulb" actions.
- Ground-glass finders; reversible for vertical or horizontal pictures.
- Metal body covered with durable imitation leather.
- Metal parts finished in nickel and black enamel.
- Black Bellows. Autographic feature.
- Two tripod sockets.

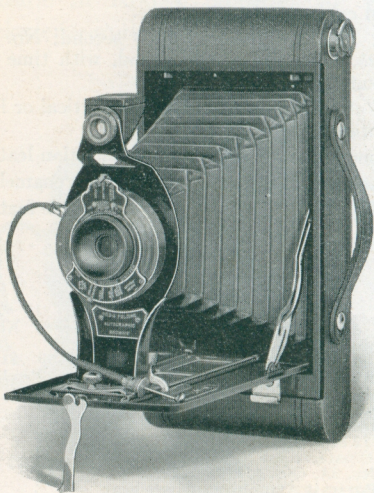
Prices

	No. 2	No. 2A
Folding Autographic Brownies, with Meniscus Achromatic lenses and Kodak Ball Bearing shutters	\$ 9.00	\$10.00
Ditto, with Rapid Rectilinear lenses	11.00	12.00
Carrying Case, for Folding Autographic Brownies, with strap	1.50	1.60
Autographic Film Cartridges, for No. 2A, 12 exposures, (No. A 116)60
Ditto, 6 exposures, for No. 2, (No. A 120) for No. 2A, (No. A 116)25	.30
Kodak Portrait Attachment, (see page 32)75	.75
Kodak Self-Timer, (see page 32)	1.25	1.25

The prices of cameras and film include the Excise War Tax

Nos. 2C and 3A Folding
Autographic BROWNIES

IN these two cameras—duplicating the two most popular picture sizes of the Kodak line—will be found every essential to the making of good pictures. Both have good lenses and shutters, the Auto-time Scale and autographic feature. They represent big values at small cost.



THE NO. 3A

EASTMAN-designed and EASTMAN-made

Details

Size of pictures: No. 2C, $2\frac{7}{8} \times 4\frac{7}{8}$ inches.
 No. 3A, $3\frac{1}{4} \times 5\frac{1}{2}$ inches;
 Size of camera: No. 2C, $1\frac{3}{4} \times 3\frac{3}{4} \times 8\frac{11}{16}$ inches;
 No. 3A, $1\frac{11}{16} \times 4\frac{5}{16} \times 9\frac{5}{16}$ inches.
 Capacity without reloading: 10 exposures.
 Weight: No. 2C, 27 ounces;
 No. 3A, 32 ounces.
 Adjustable focus, with automatic focusing lock.
 Lenses: Meniscus achromatic, Rapid Rectilinear:
 No. 2C, $5\frac{1}{2}$ -inch focus; No. 3A, $6\frac{1}{4}$ inch focus.
 Kodak Ball Bearing Shutter with Autotime Scale,
 and cable and finger release.
 Speeds: $1/25$, $1/50$ and $1/100$ second; and time
 and "bulb" actions.
 Ground-glass finders, reversible for vertical or
 horizontal pictures.
 Metal body covered with durable imitation leather.
 Metal parts finished in nickel and black enamel.
 Black Bellows.
 Autographic feature.
 Two Tripod Sockets.

Prices

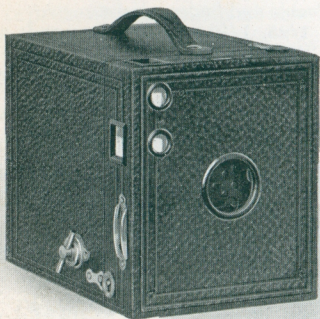
	No.2C	No.3A
Folding Autographic Brownie , with Meniscus Achromatic lenses and Kodak Ball Bearing shutters . . .	\$13.50	\$15.00
Ditto, with Rapid Rectilinear lenses . . .	16.00	17.50
Carrying Case , with strap	1.70	1.80
Autographic Film Cartridges , 10 ex- posures, $2\frac{7}{8} \times 4\frac{7}{8}$ (No. A 130) for No. 2C; 10 exposures $3\frac{1}{4} \times 5\frac{1}{2}$ (No. A 122) for No. 3A75	.90
Ditto, 6 exposures45	.55
Kodak Portrait Attachment (see page 32)75	.75
Kodak Self-Timer (see page 32).	1.25	1.25

The prices of cameras and film include the Excise War Tax

Nos. 2, 2^A 3 and 2^C

BROWNIES

SIMPLEST of all cameras to operate, the box Brownies will make good pictures in the hands of children as well as adults. They are always in focus, are equipped for instantaneous exposures, and while they differ in size, all have the common characteristic of reliability.



THE No. 3

Details

No. 2 and No. 2A Brownies

Size of pictures: No. 2, $2\frac{1}{4}$ x $3\frac{1}{4}$ inches;

No. 2A, $2\frac{1}{2}$ x $4\frac{1}{4}$ inches.

Size of camera: No. 2, $3\frac{1}{4}$ x 4 x $5\frac{5}{8}$ inches;

No. 2A, $3\frac{7}{16}$ x $5\frac{1}{8}$ x $6\frac{1}{8}$ inches.

Capacity: No. 2, 6 exp.; No. 2A, 12 exposures.

Weight: No. 2, $15\frac{1}{2}$ ounces; No. 2A, $19\frac{1}{2}$ ounces.

Fixed focus.

Lenses: 2, Meniscus; 2A, Meniscus Achromatic.

Eastman Rotary Shutter: 3 stops and time action.

Two ground-glass finders for vertical or horizontal pictures.

Metal parts finished in nickel and black enamel.

Body covered with imitation leather.

No. 2C and No. 3 Brownies

Size of pictures: No. 2C, $2\frac{7}{8} \times 4\frac{7}{8}$ inches;

No. 3, $3\frac{1}{4} \times 4\frac{1}{4}$ inches.

Size of camera: No. 2C, $3\frac{7}{8} \times 6\frac{1}{4} \times 7\frac{1}{4}$ inches;

No. 3, $4\frac{3}{8} \times 5\frac{1}{8} \times 6\frac{1}{8}$ inches.

Capacity without reloading:

No. 2C, 10 exposures; No. 3, 12 exposures.

Weight: No. 2C, 28 ounces; No. 3, 25 ounces.

Fixed focus only.

Lenses: Meniscus Achromatic.

Eastman Rotary Shutter with three stops and time actions.

Two ground-glass finders for vertical or horizontal pictures.

Two tripod sockets.

Wood body covered with imitation leather.

Metal parts finished in nickel and black enamel.

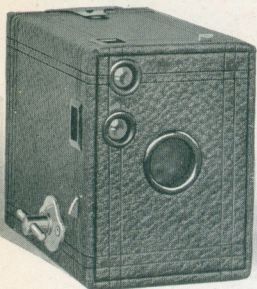
Prices

	No. 2	No. 2A	No. 3	No. 2C
Nos. 2 and 2A Brownie Cameras , Meniscus lens for No. 2; Meniscus Achromatic for No. 2A, Eastman Rotary shutters	\$2.50	\$3.50		
Nos. 3 and 2C Brownie Cameras , Meniscus Achromatic lenses Eastman Rotary shutters			\$4.50	\$5.00
Brownie Carrying Case , with strap	1.25	1.50	1.60	1.60
N. C. Film Cartridges , 6 exposures, $2\frac{1}{4} \times 3\frac{3}{4}$ (No. 120) for No. 225			
Ditto, 12 exposures, $2\frac{1}{2} \times 4\frac{1}{4}$ (No. 116) for No. 2A; $3\frac{1}{4} \times 4\frac{1}{4}$ (No. 124) for No. 360	.90
Ditto, 6 exposures30	.45
Ditto, 10 exposures, $2\frac{7}{8} \times 4\frac{7}{8}$ (No. 130) for No. 2C75
Ditto, 6 exposures45
Brownie Tripod Adapter25	.25		
Kodak Portrait Attachment ,75	.75	.75	.75
Developing and Printing Outfits ,	1.65	1.65	1.65	1.65

The prices of cameras and film include the Excise War Tax

No. 0 BROWNIE

THE smallest of the Brownies, operating at the lowest cost but making good pictures. It is light in weight, of sturdy construction and simple even for a child to operate.



Details

Size of pictures:

$1\frac{5}{8} \times 2\frac{1}{2}$ inches.

Size of camera:

$2\frac{5}{8} \times 3\frac{3}{8} \times 4\frac{1}{8}$ inches.

Capacity: 8 exposures.

Weight: 8 ounces.

Fixed focus.

Lens: Meniscus.

Eastman Rotary

Shutter: one stop,
also time action.

Two ground-glass finders for vertical and horizontal pictures.

Body covered with imitation leather.

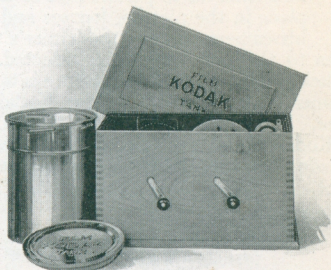
Prices

No. 0 Brownie Camera, Meniscus lens, Eastman Rotary shutter	\$2.00
Brownie Carrying Case	1.00
N. C. Film Cartridge, 8 exposures (No. 127)25
Brownie Tripod Adapter25
Kodak Portrait Attachment, (see page 32)75
Developing and Printing Outfit	1.00

The prices of cameras and film include the Excise War Tax

KODAK FILM TANKS

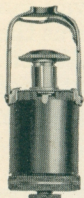
AS far as developing goes the novice can produce just as good negatives as the expert with the Kodak Film Tank. There is no guess work—it's merely a matter of following simple instructions—and all by daylight.



Prices

"Brownie" Kodak Film Tank, for use with No. 1, and No. 2 Brownie Cartridges, complete	\$4.00
Vest Pocket Kodak Film Tank, for Vest Pocket Cartridges, complete	3.50
2½-inch Kodak Film Tank, for use with all Kodak or Brownie Cartridges having a film width 2½-inches or less, complete	5.00
3½-inch Kodak Film Tank, for use with all Kodak and Brownie Cartridges having a film width of 3½-inches or less, complete	6.00
5-inch Kodak Film Tank, for use with all Kodak and Brownie Cartridges having a film width of 5-inches or less, complete	7.00
Kodak Tank Developer Powders, for Brownie Kodak Film Tank, per package, ½ dozen	.20
Ditto, for Vest Pocket Tank	.20
Ditto, for 2½-inch tank, per package, ½ dozen	.25
Ditto, for 3½-inch tank, per package, ½ dozen	.25
Ditto, for 5-inch tank, per package, ½ dozen	.30
Kodak Acid Fixing Powder, per ¼-pound pkg.	.15
Ditto, per ½-pound package	.20
Ditto, per 1-pound package	.35

KODAK Self-Timer



IN the past, the photographer has been left out of group pictures because some one had to operate the camera shutter. Now the Kodak Self-Timer will do it. The photographer attaches it to the cable release of his camera, sets it to "go off" at a sufficiently long interval to permit him to take his place in the picture, focuses and sights his camera, presses the Timer's trigger and moves to the position he has selected. The familiar click announces that the picture is taken.

The Timer may also be used for Kodak self-portraiture. With the Kodak Portrait Attachment and the Kodak Self-Timer, portraits of one's self may be made wherever the light is strong enough for a snap-shot.

Kodak Self-Timer \$1.25

KODAK Portrait Attachment



THE Kodak Portrait Attachment is simply an extra lens which fits over the front of the regular lens and permits the taking of head-and-shoulder portraits or close-ups of any object. Used independently of the Self-Timer, either snap-shots or time exposures may be taken. Give exact designation of camera and shutter when ordering.

Kodak Portrait Attachment \$.75

*All prices in this booklet subject to change
without notice.*

EASTMAN KODAK COMPANY,
ROCHESTER, N. Y., *The Kodak City.*

CHAS. B. ROGERS & CO.
701 CENTRE STREET
JAMAICA PLAIN, MASS.