

*Directions for picture taking
with the*

**Anniversary
Camera**
and Kodak Film



The dependable Film in the Yellow Box

TO THE
BOY OR GIRL
WHO RECEIVES THIS
ANNIVERSARY
CAMERA



*I hope you enjoy this
camera as much as we
enjoy giving it to you.
Best wishes and good luck.*

J. S. Eastman

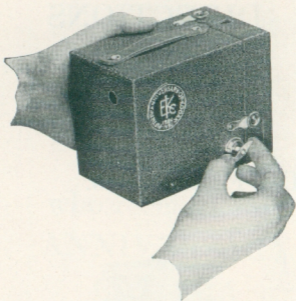
DIRECTIONS

LOADING

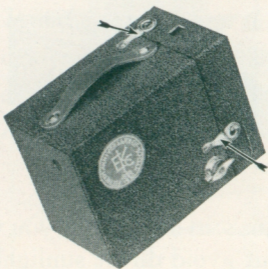
- 1** USE Film No. 120.



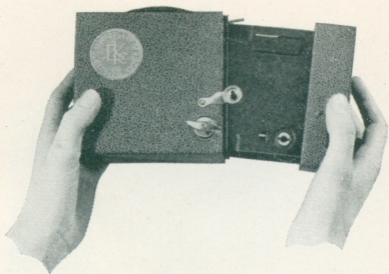
- 2** LOAD in daylight if you wish, but avoid direct sunlight.



Picture No. 1

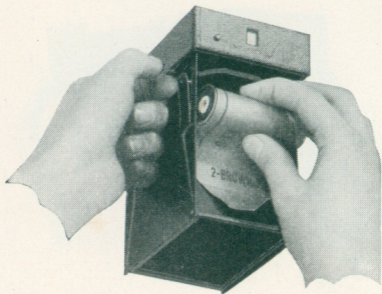


Picture No. 2



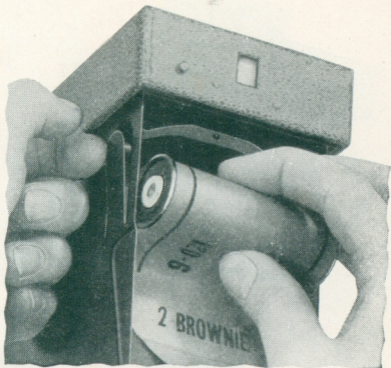
Picture No. 3

3 OPEN the camera by first pulling out the winding key, turning it toward you as you do so as in picture No. 1. Push open the two catches shown by arrows. (Picture No. 2.) Then pull camera apart as shown in picture No. 3.



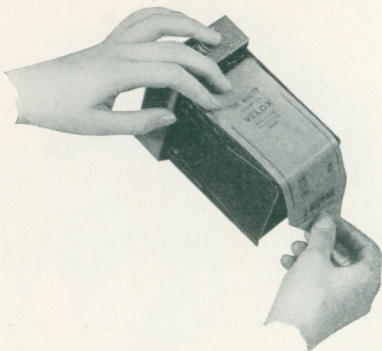
Picture No. 4

- 4** TAKE film out of the yellow box and remove the tin foil.
- 5** BREAK and remove the white band on the film.
- 6** HOLD the film so that it unrolls *red side up*.



Picture No. 5

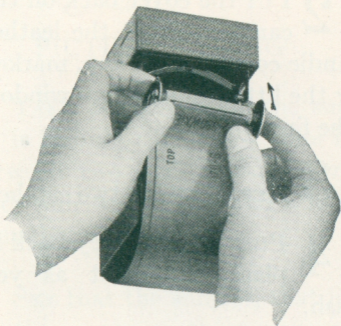
7 THEN place it in the top of the camera as shown in picture No. 4 (the square window finder marks the top), fitting the little prongs in each end of the spool. See picture No. 5.



Picture No. 6

8 UNROLL enough red paper to reach empty spool on bottom of camera, passing it *over* the rollers, not *under*. (Picture No. 6.)

9 INSERT end of red paper in *long* slit of spool (not short one) as far as it will go.



Picture No. 7

10 THEN remove this spool and wind up an inch or two, not more, of red paper, winding in direction shown by arrow in picture, making sure that the film fits evenly between the ends of the spool. (Picture No. 7.)

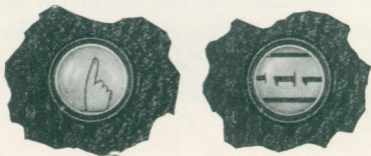
11 REPLACE spool.

12 PUT the cover back on the camera so that the leather handle comes on the top, marked by the little square glass window (the finder).

13 REFASTEN the two catches.

14 PUSH winding key back in place, turning it as you push.

15 GIVE the key a few turns until a warning hand appears in the red window at the back of the camera. Then turn slowly until the figure "1" is in the center of the window.



The film is now in position for the first picture.

PICTURE-TAKING

1 TAKE pictures while the sun is shining. The best time is between two and a half hours after sunrise and two and a half hours before sunset.

2 SEE that the subject, that is, the person or thing you are making a picture of, is in the broad open sunlight, but that the camera isn't. Keep the sun behind your back or over your shoulder. Don't let it shine directly into the lens or it will blur and fog the picture.

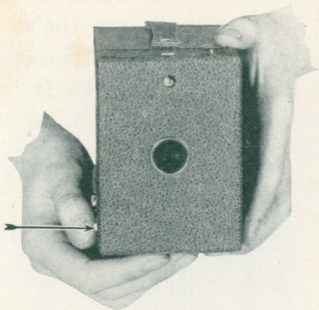
3 SEE that the subject is six feet away or farther. Subjects any nearer than six feet will not make clear pictures.

4 POINT the camera at the subject and look into the finder (the square window in the top of the camera) from directly over the center of it. Only what you see in the finder will show in the picture.



Effect produced by tilting the camera

5 HOLD the camera *level*. Don't tilt it. If you can't get the whole subject in the finder by holding the camera level, move backward until you can.



Picture No. 8

6 HOLD the camera *steady*. Hold it firmly against the body. When pushing the exposure lever (indicated by arrow in picture No. 8) hold your breath for a moment. If the camera is moved during the exposure, the picture will be blurred.



Picture No. 9
Making the Exposure

7 PUSH lever either up *or* down with the right thumb. Move it once only for each picture. If it is at the top of the slot, push it down; if at the bottom, push it up—*one movement only*. Push lever *all the way*, as far as it will go. Do not, however, jerk the lever, as any movement of the camera, at the instant of exposure, will blur the picture. (Picture No. 9.)

8 PRESS in the winding key slightly as you turn it slowly until the figure “2,” or the next number, appears in the center of the red window.



Do this after *each* exposure.

The warning hand appears only before No. 1.

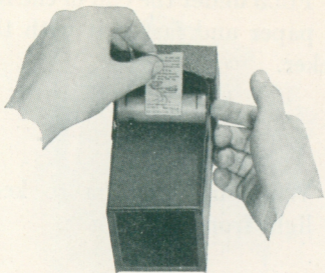
Turn the next section of film into position *immediately after making each exposure*; this prevents making two pictures on the same section of film.

UNLOADING

This camera can be loaded or unloaded in daylight. It should be done in subdued light, not in direct sunlight.

1 WHEN the last picture has been taken turn the winding key until the end of the paper passes the red window.

2 OPEN the camera.



Picture No. 10

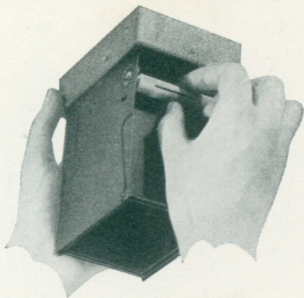
3 GRASP the end of the red paper and the sticker and hold both as you remove the spool from the camera, after first pulling out spring containing prong (see picture No. 10). Thus you prevent the roll of film from loosening. If the sticker has been wound under the roll, turn the spool until it comes up.

4 FOLD under the end of the red paper and fasten it with the sticker.

5 WRAP up the film to keep light from reaching it.

6 GET the film developed as soon as possible. The sooner you develop it the better your pictures are likely to be.

7 REMOVE the *empty* spool from the top of the camera and put it in the bottom. See that the slotted end comes next to the hole. (See picture No. 11.)



Picture No. 11

8 CLOSE the camera. Your roll is now ready for developing and printing.

It is a good plan to reload the camera as soon as an exposed film has been removed, to be ready for the next pictures. This camera takes Kodak Film 120.

EASTMAN KODAK CO.
ROCHESTER, NEW YORK

This Camera takes
KODAK FILM
120

The dependable film
in the yellow box
—the film that gets
the picture

ONLY EASTMAN MAKES
KODAK FILM