

*Leica*

LEICA M6

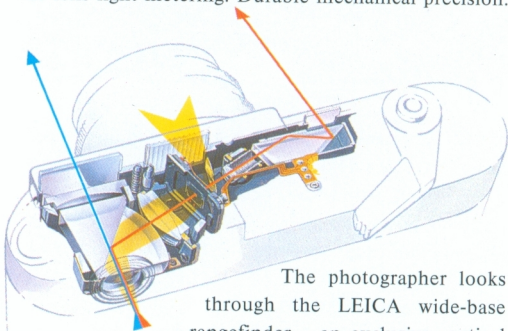
CLASSICAL PHOTOGRAPHY



MADE BY LEICA

## On the Rangefinder System

There is no alternative worldwide to the classical LEICA M6, since only Leica offers a compact mechanical 35 mm rangefinder system camera. It is complemented by a range of high-speed lenses from 21 to 135 mm and a radiantly bright viewfinder. Highest optical performance to the limits of technical feasibility; precise, spot-accurate focusing even in the poorest light conditions, a silky smooth, practically inaudible shutter. Selective through-the-lens light metering. Durable mechanical precision.



The photographer looks through the LEICA wide-base rangefinder - an exclusive, optical and precision-engineered masterpiece that guarantees split-second, accurate focusing.

### Close to the Center of Action

The sleek, elegant form that so perfectly and ergonomically fits the hand makes the LEICA M6 a particularly handy camera set of highest quality and an ideal constant companion. The photographer working with the LEICA M6 stays at the hub of what is going on, unobtrusively bridges the gap between himself and his subject. The whispering, precision mechanical shutter release without mirror movement, typical of SLR-cameras, allows him to remain unnoticed, to become part of the event and take dynamic, spontaneous photographs in the center of action.



## On the High-Contrast Viewfinder

The viewfinder remains radiantly bright, irrespective of the lens used, while high contrast, bright-line frames indicate the image area, enabling perfect picture composition. A clearly visible field around these bright-line frames facilitates quick-action photography of moving subjects, allowing the photographer to better assess the final composition of the picture within his frame.



Viewfinder image for 28 and 90 mm focal length.



Viewfinder image for 35 and 135 mm focal length.



Viewfinder image for 50 and 75 mm focal length.

## On the Highest Optical Performance

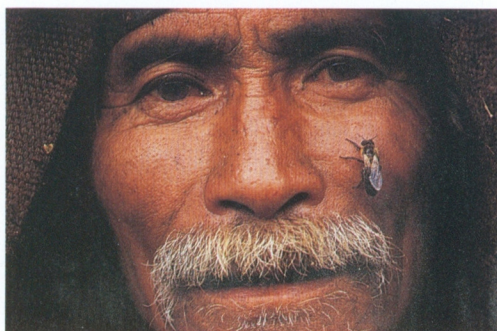


13 LEICA M Lenses from 21 to 135 mm, with light speeds of up to f/1, are distinguished by brilliant imaging performance of world-wide acclaim: high contrast and resolving power, exemplary freedom from reflexes and neutral color rendition – even at full lens aperture.

### Selective Exposure Metering.

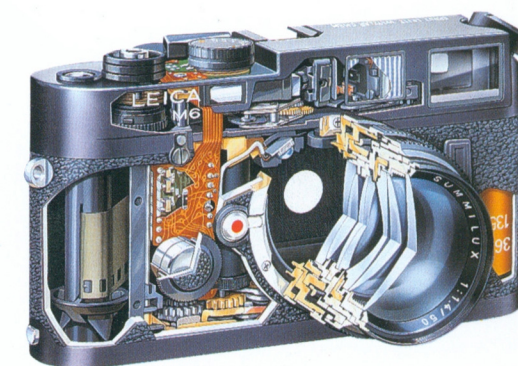
Even the most difficult light conditions can be mastered by the LEICA M6 and its selective, through-the-lens exposure metering. The photographer is empowered to express his creativity through the refined composition with light, to master a range of colors, backlighting as well as variations of brightness and contrast. With the exposure meter's sensitivity of up to 0.125 cd/m the LEICA M6 can captivate the special atmosphere of low-light scenes all the way down to a candle-light dinner.

A light touch on the shutter release switches on the exposure meter. The exposure time and aperture are adjusted manually until the viewfinder's balancing scale shows that the subject is correctly lit. Fine adjustment even at a professional level and intentional over- or under-exposure are also possible.



## Technical Data

**Camera type:** 35 mm rangefinder camera.  
**Lens attachment:** LEICA M bayonet.  
**Viewfinder:** Bright-line frames for 6 focal lengths. Rangefinding scale. Exposure meter on: shutter/aperture balance.  
**Parallax compensation:** Automatic compensation of viewfinder/lens parallax.  
**Wide-base rangefinder:** Bright-field split-image and double-image rangefinder.  
**Exposure metering method:** Selective through-the-lens metering at working aperture.  
**Photocell:** Silicon photodiode.  
**Switch on exposure meter** by light touch on shutter release, for about 10 s.  
**Aperture settings** by ring at front of lens, click-stops at full and half-stop settings.  
**Shutter settings:** Setting knob on top cover of camera. Click-stop settings, read from above: B, 1 s to  $\frac{1}{1000}$  s ( $\frac{1}{50}$  s for  $\frac{1}{2}$ ).  
**Film-speed range:** ISO 6/9° to ISO 6400/39°.  
**Shutter:** Rubberized-cloth horizontal focal-plane shutter. Mechanically controlled speeds. Practically inaudible.  
**Flash synchronization:** Standard X contact socket for bulb and electronic flash units. Central X hot-shoe contact.  
**Shutter release:** Release button with standard thread for cable release. Two-stage, switches on exposure meter and releases shutter.  
**Film transport:** Quick-wind lever with movable handle. Interval movement possible. Motorized film transport with add-on LEICA M Winder.  
**Exposure counter** with magnifying display, resets automatically on removal of base panel.  
**Rewind lever:** Release lever, sloped hinge-out rewind lever.  
**Film-plane mark** on top panel.  
**Camera body:** Closed camera body of die-cast aluminium, hinged back. Top panel 0.8 mm die-cast zinc, bottom panel 0.8 mm brass. Eyelets at sides for carrying strap.  $\frac{1}{4}$ " A thread for tripod screw. Mechanical contact for LEICA M Winder. Black or silver chromium finish.  
**Dimensions / weight (excl. lens):** 77 mm (3") / 138 mm (5½") / 38 mm (1½") / weight 560 g (1 lb 4 oz).



## Concentration on Essentials

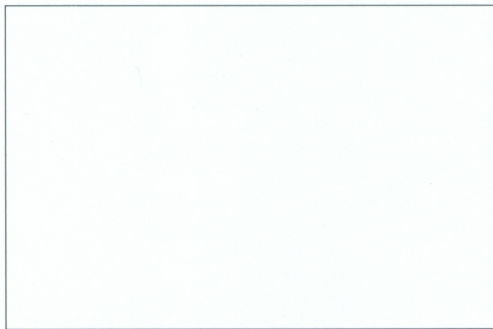
The classical LEICA M6 has its origin in the so-called "Ur-LEICA" of 1914, with which today's world standard 35 mm-format (24 x 36 mm) was created. It's fascination is built on the experience of original creativity and the expression of Leica philosophy in its purest form: concentration on essentials.

Photography with the LEICA M6 puts human skill foremost. Indeed, the idea behind the development of the LEICA was based on the conviction that above all it is human creativity, the human capacity of feeling and expression, the ability to compose with form, light and color, that can invest a photograph with outstanding qualities.

This dimension of creativity must of course be matched by the highest criteria of technical performance, and these are met in an exemplary way by the world-famous LEICA M6, which excels in absolute reliability, long-lasting durability, perfect functioning, mechanical precision and highest optical performance.

Photographers:

Clive Davis, Leonid Kamarowsky, Uwe Niehuus,  
Eric Valli



Trademark of  
The Leica Camera Group

Leica Camera GmbH, Oskar-Barnack-Strasse 11, D-6336 Solms  
Telephone + 49 (06442) 208-0, Telefax + 49 (06442) 208-333  
Telex 482610 leica d

® = Registered Trademark

Illustrations, descriptions and technical data are not binding  
and may be changed without notice.

Order numbers of the edition in **English 910 461**

French 910 433

Printed in Germany IX/91/DLXY/B.