

**CYKØ**

and other high grade  
**PHOTOGRAPHIC  
MATERIALS**

MANUFACTURERS

**ANSCO LIMITED**

**143-149 GT PORTLAND ST.  
LONDON W.**



## DEVELOPING

### PAPER

(Gaslight)



## DEVELOPING

### PAPER

(Gaslight)

# Grades

- Contrast CYKO (Blue Label)** For Weak Negatives
- Normal CYKO (Yellow Label)** For Average Negatives
- Soft CYKO (Red Label)** For Contrasty Negatives
- Professional CYKO (Brown Label)** Intended for studio portraiture, and is absolutely distinct from the other grades



# Surfaces

(In all grades)

- No. 2. Semi-Matte** { Single Weight } (Dead—Matte Sur-  
 { Double Weight } face—No Lustre)
- No. 3. Glossy** ... { Single Weight } (Very High Gloss)  
 { Double Weight }
- No. 5. Plat** ... { Single Weight } (Original Platinum  
 { Double Weight } surface with slight  
 imperceptible grain  
 —dead matte)
- No. 6. Studio** ... { Single Weight } (Smooth surface with  
 { Double Weight } slight sheen)
- Buff** ... { (India tint stock with slight grain  
 similar to Plat surface. Made only  
 in double-weight and only in the *Soft*  
 and *Professional* grades



**ANSCO LIMITED**



**DEVELOPING  
PAPER**  
(Gaslight)



**DEVELOPING  
PAPER**  
(Gaslight)

Size in Inches	Quantity	PRICE (single weight)		PRICE (double weight)	
		s.	d.	s.	d.
3½ × 2½	16 sheets	0	6	—	—
3½ × 3½	14	0	6	—	—
4½ × 2½	15	0	6	—	—
4½ × 3½	12	0	6	—	—
5 × 4	72	2	6	—	—
5½ × 3½	9	0	6	—	—
5½ × 3½	9	0	6	—	—
5½ × 4	72	3	6	—	—
5¾ × 4	7	0	6	—	—
6 × 4¼	72	4	6	—	—
6 × 4¼	14	1	0	—	—
6 × 4¼	72	4	6	—	—
6½ × 4¾	12	1	0	1	3
6½ × 4¾	72	5	6	6	3
7½ × 5	12	1	3	10	10
7½ × 5	72	7	0	8	3
8 × 6	12	1	9	2	2
8 × 6	72	8	6	10	5
8½ × 6½	12	2	0	2	6
8½ × 6½	72	10	6	12	6
9 × 7	12	2	6	3	0
10 × 8	12	2	9	3	4
10 × 8	72	14	6	18	6
12 × 10	12	4	0	5	0
12 × 10	72	20	6	28	0
12½ × 10½	12	4	4	5	8
14 × 11	12	5	9	6	6
15 × 12	12	6	6	7	1
15½ × 12½	12	7	0	8	5
18 × 15	12	9	6	11	10
20 × 16	12	11	0	16	0
23 × 17	12	12	6	16	6
24 × 20	12	14	9	19	9



**ANSCO LIMITED**



**DEVELOPING  
PAPER**  
(Gaslight)



**DEVELOPING  
PAPER**  
(Gaslight)

## Cyko Rolls

Width	Length	PRICE (single weight)		PRICE (double weight)	
		s.	d.	s.	d.
6 inches	100 feet	19	0	25	0
8	" "	25	0	33	0
10	" "	31	0	42	0
12	10 "	4	6	6	6
12	25 "	10	0	14	6
12	100 "	38	0	50	0
16	25 "	13	6	16	6
18	25 "	15	0	19	6
25	10 "	9	0	12	0
25	25 "	22	0	29	0
30	25 "	26	0	34	6
40	10 "	15	0	19	6

## Cyko Paper LINEN SURFACE DOUBLE WEIGHT

CYKO LINEN is a heavy-weight stock and may be obtained in either **WHITE** or **BUFF**

Size in inches	Quantity	PRICE		Equivalent in centimetres
		s.	d.	
8½ × 6½	12 sheets	3	0	21.6 × 16.5
" "	72 "	17	0	" "
10 × 8	12 "	4	6	25.4 × 20.4
" "	72 "	24	0	" "
12 × 10	12 "	7	6	30.5 × 25.4
" "	72 "	36	0	" "
15 × 12	12 "	10	0	38.1 × 30.5
" "	72 "	48	0	" "
18 × 15	12 "	15	0	45.7 × 38.1
" "	72 "	70	0	" "
23 × 17	12 "	21	0	58.4 × 43.2
24 × 20	12 "	26	0	61 × 50.8

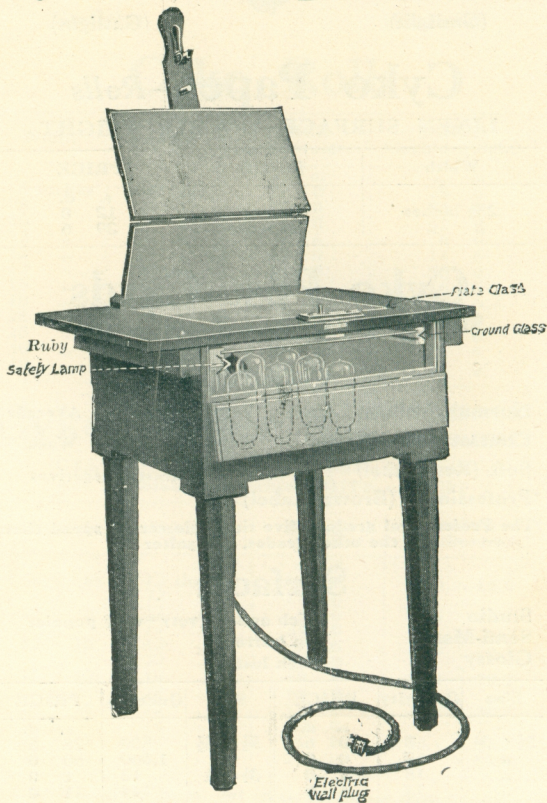
CYKO LINEN is not cut in smaller sizes than 8½ × 6½.

**ANSCO LIMITED**



**CYKO**

# Cyko Printing Machine

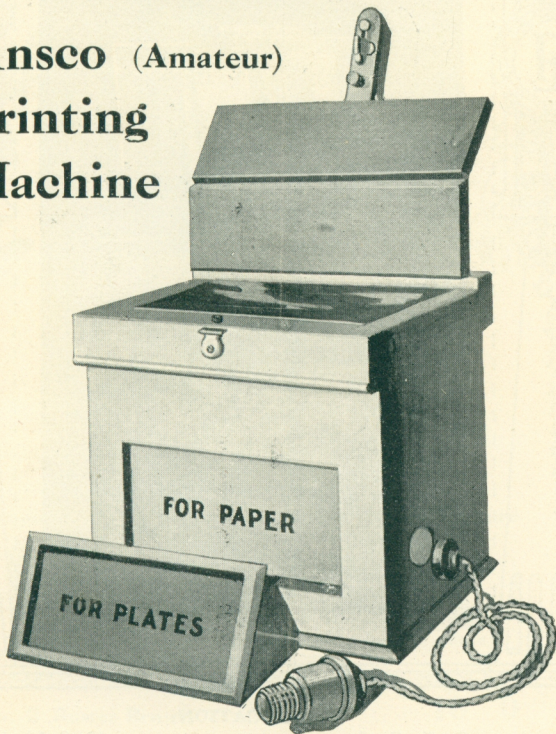


Price (without bulbs) ... £6 10 0

**ANSCO LIMITED**



# AnSCO (Amateur) Printing Machine

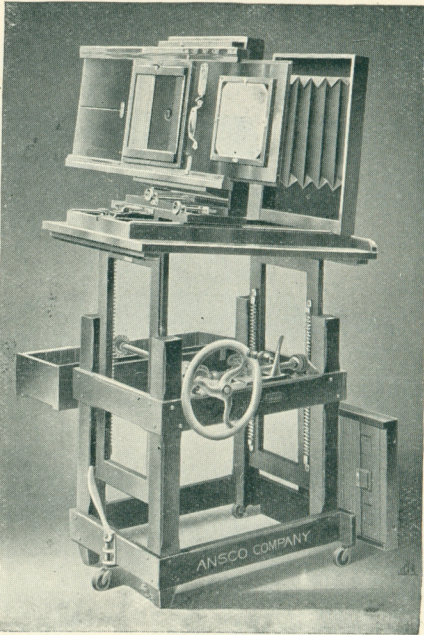


This Printing Machine is designed specially to meet the requirements of the amateur—it serves the combined purpose of a printing machine and dark room lamp—it has a small ruby non-actinic bulb for safety during the preliminary adjustment of printing paper. It is also equipped with electric wall plug.

Price **35/-**

**ANSCO LIMITED**

# ANSCO STUDIO OUTFIT.



### SPECIFICATION:

AnSCO Studio Outfit	.. .. .	10×8	14×11
Length of Bellows	.. .. .	19	42
Weight of Complete Outfit packed ready for shipment	.. .. .	185	215

### PRICE

When Ordered Complete.						
Outfit complete, comprising AnSCO Portrait Camera, with Benster Holder, Automatic Cabinet Attachment with Curtain Slide Holder, AnSCO Camera Stand & Holder Rack	Size		Size			
	10 × 8		14 × 11			
	£	s.	d.	£	s.	d.
	14	10	0	19	0	0

**ANSCO LIMITED**



**FILM CAMERAS**

*Buster Brown*  
Cameras.

**No. 2 Buster Brown**



**For pictures  $2\frac{1}{4} \times 3\frac{1}{4}$  inches ; adapted for six-exposure Film (4A).**

Dimensions  $3\frac{1}{2} \times 4\frac{1}{4} \times 5\frac{1}{2}$  inches. Weight 13 ounces. Lens, fixed focus Meniscus of fine quality. Shutter, enclosed within the box and arranged for both snapshot and time exposures. Diaphragm with three different size openings. Two finders for horizontal and vertical pictures. Noiseless winding key. Covered with fine imitation leather. Made of wood throughout.

**PRICE**

No. 2 Buster Brown	...	...	...	s.	d.
				10	0

**No. 2A Buster Brown**

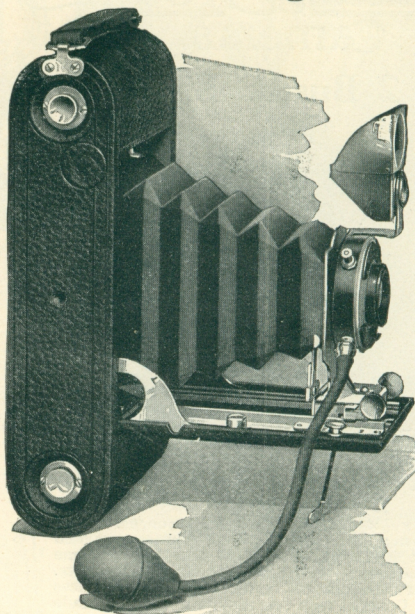
**For pictures  $2\frac{1}{2} \times 4\frac{1}{4}$  inches ; adapted for six or twelve exposure Film (6A or 6B).**

**PRICE**

No. 2A Buster Brown	...	...	...	s.	d.
				14	6

**ANSCO LIMITED**

## No. 1A Folding Pocket Ansco



### Specifications:

For pictures  
 $2\frac{1}{2} \times 4\frac{1}{4}$  inches;  
 adapted for  
 six or twelve  
 exposure Film  
 (6A or 6B).

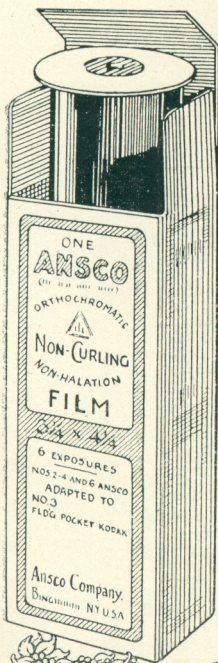
Dimensions,  
 $1\frac{3}{4} \times 3\frac{7}{8} \times 8\frac{1}{2}$   
 inches. Weight,  
 29 ounces. Lens,  
 Ansco Double  
 Rapid Sym-  
 metrical. Fitted  
 with Ansco  
 Automatic Shut-  
 ter. Focal length  
 of lens  $4\frac{1}{4}$  inches,  
 working at U.S.  
 4. Finder, auto-  
 matic plano  
 reversible.  
 Noiseless wind-  
 ing key. New  
 spool-holding  
 arrangement.  
 Two tripod  
 sockets.

### Price

No. 1A FOLDING POCKET ANSCO, $2\frac{1}{2} \times 4\frac{1}{4}$ inches, with Ansco Automatic Shutter ..	£3 18 0
Sole Leather Carrying Case .. .. .	0 6 0
Ansco Portrait Attachment .. .. .	0 2 0
Six Exposure Film, $2\frac{1}{2} \times 4\frac{1}{4}$ (6A) .. .. .	0 1 1
Twelve Exposure Film, $2\frac{1}{2} \times 4\frac{1}{4}$ (6B) .. .. .	0 2 2
No. 3A FOLDING ANSCO—The No. 3A Folding Ansco is a larger Model, for Films $3\frac{1}{2} \times 5\frac{1}{2}$ (Postcard size). Price. complete with Lens, ..	5 10 0

## ANSCO LIMITED

# ANSCO FILM



THESE are all numbered and lettered. The number indicates the size and also the camera for which it is intended, and the letter the number of exposures.

## Keeping Quality a Convenient Advantage

Anso Films as now made will keep in good condition during the time for which they are guaranteed under almost any climatic conditions, and will last almost as long as a dry plate if proper care is taken of them.

No.	Size.	Exposure.	Name of Camera	Price.
2A	1 1/8 x 2 1/2	6 Ex	Adapted to No. 0 Folding Pocket Kodak	s. d. 0 7
2B	1 1/8 x 2 1/2	12 Ex	Adapted to the same cameras as the 2A	1 2
3A	2 1/4 x 2 1/4	6 Ex	For No. 1 Buster Brown, adapted to No. 1 Brownie .. .. .	0 7

ANSCO LIMITED

# ANSCO FILM

No.	Size.	Expo- sure.	Name of Camera	Price.
				s. d.
4A	$2\frac{1}{4} \times 3\frac{1}{4}$	6 Ex	For No. 2 Buster Brown and No. 1 Folding Buster Brown, Ansco-Hip-Pocket adapted to No. 2 Brownie and No. 2 Folding Pocket Brownie	0 10
5A	$2\frac{1}{4} \times 3\frac{1}{4}$	6 Ex	Adapted to No. 1 Folding Pocket Kodak, and No. 1 Panoram Kodak	0 10
5B	$2\frac{1}{4} \times 3\frac{1}{4}$	12 Ex	Adapted to the same cameras as the 5A	1 9
6A	$2\frac{1}{2} \times 4\frac{1}{4}$	6 Ex	For No. 2A Buster Brown, and Ansco Jr.; adapted to No. 1A Folding Pocket Kodak, No. 1A F.P.K. Special, 1A Speed Kodak, and No. 2A Brownie	1 1 2 2
6B	$2\frac{1}{2} \times 4\frac{1}{4}$	12 Ex	Adapted to the same cameras as the 6A	2 2
7A	$3\frac{1}{4} \times 4\frac{1}{4}$	6 Ex	For Nos. 2, 4 and 6 Ansco Cameras; adapted to No. 3 Folding Pocket Kodak	1 6 3 0
7B	$3\frac{1}{4} \times 4\frac{1}{4}$	12 Ex	Adapted to the same cameras as the 7A	1 6
7C	$3\frac{1}{4} \times 4\frac{1}{4}$	6 Ex	Adapted to No. 3 Folding Brownie, No. 3 Brownie, and No. 3 Bull's Eye Kodak	3 0
7D	$3\frac{1}{4} \times 4\frac{1}{4}$	12 Ex	Adapted to the same cameras as the 7C	1 6
8A	$3\frac{1}{2} \times 3\frac{1}{2}$	6 Ex	For No. 1 Ansco; adapted to No. 2 Bullet, No. 2 Bull's Eye, No. 2 Flexo Kodak, No. 2 Stereo Pocket Kodak, No. 2 Folding Kodak	3 0 1 3 2 6
8B	$3\frac{1}{2} \times 3\frac{1}{2}$	12 Ex	Adapted to the same cameras as the 8A	2 6
10A	4 × 5	6 Ex	For Nos. 3, 5 and 7 Ansco; adapted to No. 4 Bullet, No. 4 Bull's Eye, No. 4 Panoram Kodak, No. 4 Bullet Special Model C, No. 4 Bull's Eye Special	1 11
10B	4 × 5	12 Ex	Adapted to the same cameras as the 10A	3 9
10C	4 × 5	6 Ex	Adapted to No. 4 Folding Pocket Kodak, No. 4 Screen Focus Kodak	1 11
10D	4 × 5	12 Ex	Adapted to the same cameras as the 10C	3 9
11A	$4\frac{1}{4} \times 3\frac{1}{4}$	6 Ex	Adapted to No. 3 Cartridge Kodak	1 6
11B	$4\frac{1}{4} \times 3\frac{1}{4}$	12 Ex	Adapted to No. 3 Cartridge Kodak	3 0
12A	5 × 4	6 Ex	Adapted to No. 4 Cartridge Kodak	1 11
12B	5 × 4	12 Ex	Adapted to the same cameras as the 12A	3 9
13A	7 × 5	6 Ex	Adapted to No. 5 Cartridge Kodak	3 4
13B	7 × 5	12 Ex	Adapted to the same cameras as the 13A	6 6
18A	$3\frac{1}{4} \times 5\frac{1}{2}$	6 Ex	For Nos. 9 and 10 Ansco; adapted to No. 3A Folding Pocket Kodak, 3A Folding Brownie, and 3A Graflex	1 9 3 0
18B	$3\frac{1}{4} \times 5\frac{1}{2}$	10 Ex	Adapted to the same cameras as the 18A	3 0
18C	$3\frac{1}{4} \times 5\frac{1}{2}$	6 Ex	For No. 3A Ansco; adapted to No. 2 Stereo Brownie and No. 3B Quick Focus Kodak	1 9
18D	$3\frac{1}{4} \times 5\frac{1}{2}$	10 Ex	Adapted to the same cameras as the 18C	3 0
19A	$4\frac{1}{4} \times 6\frac{1}{2}$	6 Ex	Adapted to No. 4A Folding Kodak and No. 4A Speed Kodak	2 9

## ANSCO LIMITED